





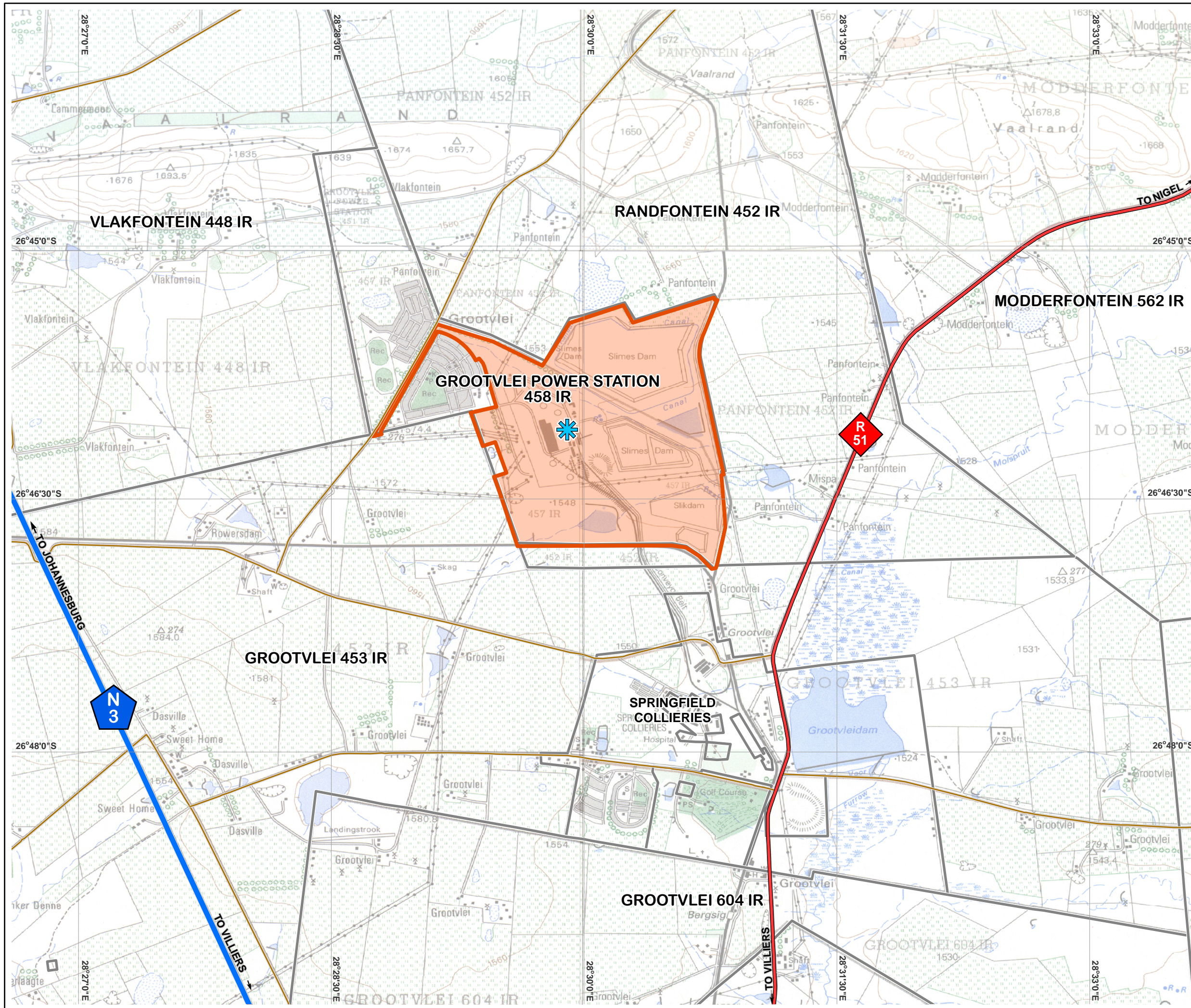




GROOTVLEI POWER STATION
PROPOSED BULK STORAGE FUEL OIL TANK INSTALLATION
REGIONAL CONTEXT

Legend

-  National Route (N3)
-  Arterial Road (R51)
-  Secondary Roads
-  Farm Portions
-  Grootvlei Power Station Site Boundary
-  Area for the Proposed Tank



SOURCE:
 1: 50 000 MAP SHEETS (2628CB, 2628CD & 2628DC)
 MPUMALANGA BIOBASE, 2006
 ESKOM HOLDINGS, 2011

 0 0.5 1 Kilometers	 ENVIRONMENTAL DIVISION 51 WESSELS ROAD RIVONIA, 2128 JOHANNESBURG SOUTH AFRICA Phone: +27 11 798 0600 Fax: +27 11 803 7272 e-mail: info@sivest.co.za		
Project No 10937	Map Ref No 10937/BA_01	Prepared By LAC/KLS	Date 04/10/2011

"COPYRIGHT IS VESTED IN SIVEST IN TERMS OF THE COPYRIGHT ACT (ACT 98 OF 1978) AND NO USE OR REPRODUCTION OR DUPLICATION THEREOF MAY OCCUR WITHOUT THE WRITTEN CONSENT OF THE AUTHOR"

THIS MAP HAS BEEN PREPARED UNDER THE CONTROLS ESTABLISHED BY THE SIVEST QUALITY MANAGEMENT SYSTEM AND MEETS THE REQUIREMENTS OF THE SETA QUALITY GRADING SYSTEM THAT IS ISO COMPLIANT