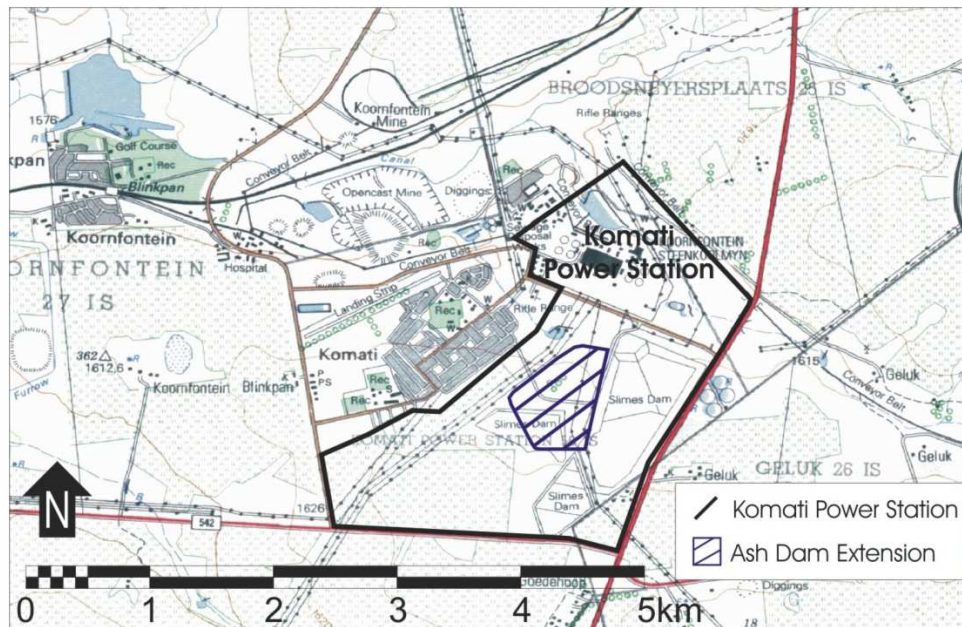


NOTICE OF ENVIRONMENTAL IMPACT ASSESSMENT

New Ash Dam Facility at Komati Power Station, Mpumalanga

Background

Eskom Holdings Limited is busy with the re-commissioning of the Komati Power Station. It is necessary to establish a new ash dam facility. A site within the Komati Power Station property, adjacent to the existing ash dams, has been identified as the preferred site.



Environmental Impact Assessment Process

An application for environmental authorisation of the proposed ash dam facility has been submitted to the Department of Environmental Affairs and Tourism (Ref: 12/12/20/1007).

Synergistics Environmental Services (Pty) Ltd will conduct a Scoping and Environmental Impact Assessment study in accordance with the Environmental Impact Assessment Regulations (No. 385 and 387) published under Chapter 5 of the National Environmental Management Act (No. 107 of 1998).

Application for Exemption

An application for exemption (Section 51 of Regulation 385) from the consideration of alternatives during the Environmental Impact Assessment study has been made to the Department of Environmental Affairs and Tourism.

Water Use Licence

The ash dam extension will be licensed in terms of Section 21 of the National Water Act (No. 36 of 98).

Public Consultation

You are invited to register as an interested and affected party for the new ash dam facility at Komati Power Station. Please contact or send written comment to:

Matthew Hemming
Synergistics Environmental Services
Tel: 011 807 8225 Fax: 011 807 8226
Postal: PO Box 1822, Rivonia 2128
Email: matthew@synergistics.co.za



Public Meeting

You are hereby invited to discuss the project at a public meeting to be held at the:

Igwababa Hall (Komtai Club)
Time: 12noon
Date: 13 September 2007

Correspondence must be received on or before

