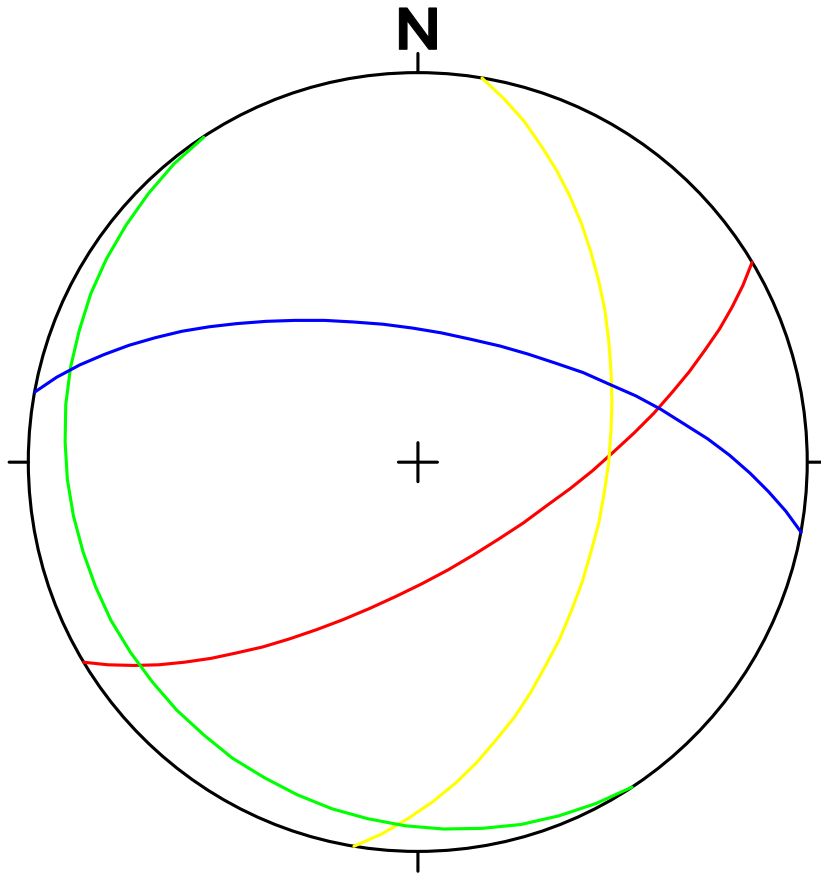


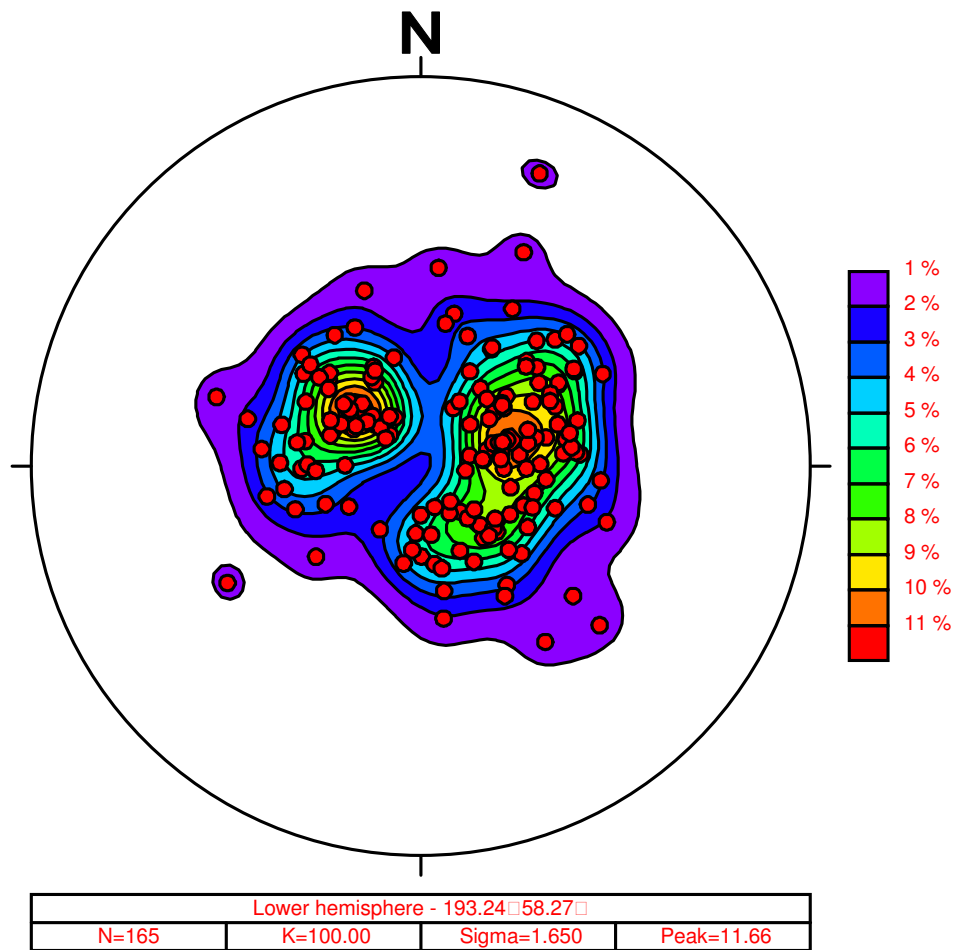
**Title: Borehole PT 01 contoured lower hemisphere polar plots of all joints from 300m to 350m.**



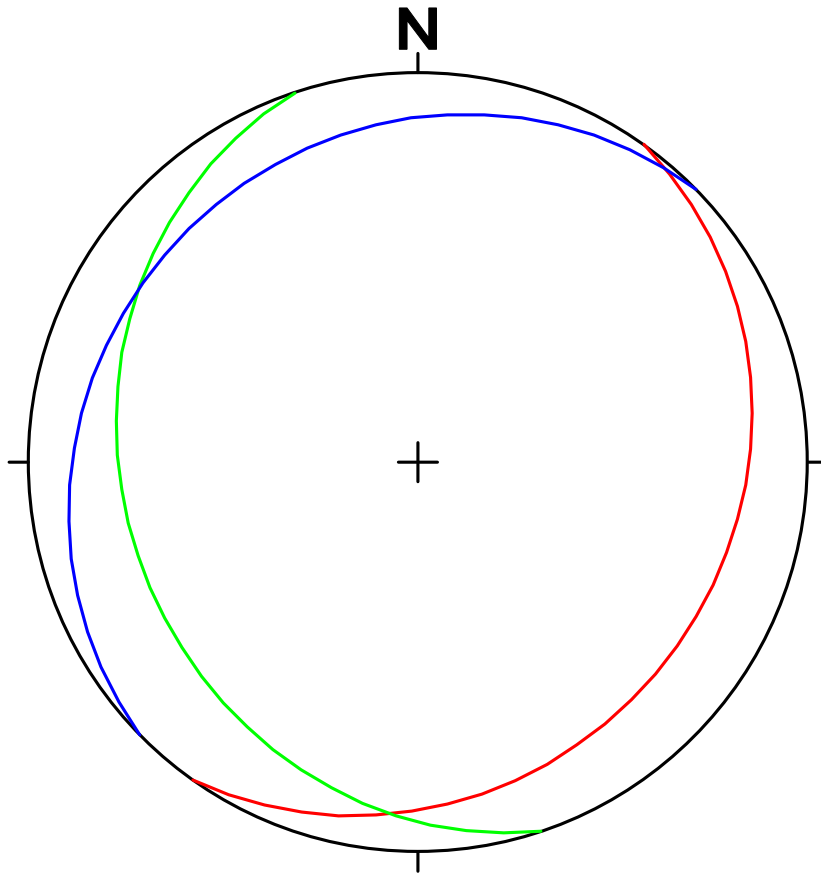
**Title: Borehole PT 01 great circles of all joints.**

**Legend**

- Joint 1**
- Joint 2**
- Joint 3**
- Joint 4**



**Title: Borehole SC 01 contoured lower hemisphere polar plots of all joints from 200m to 300m.**



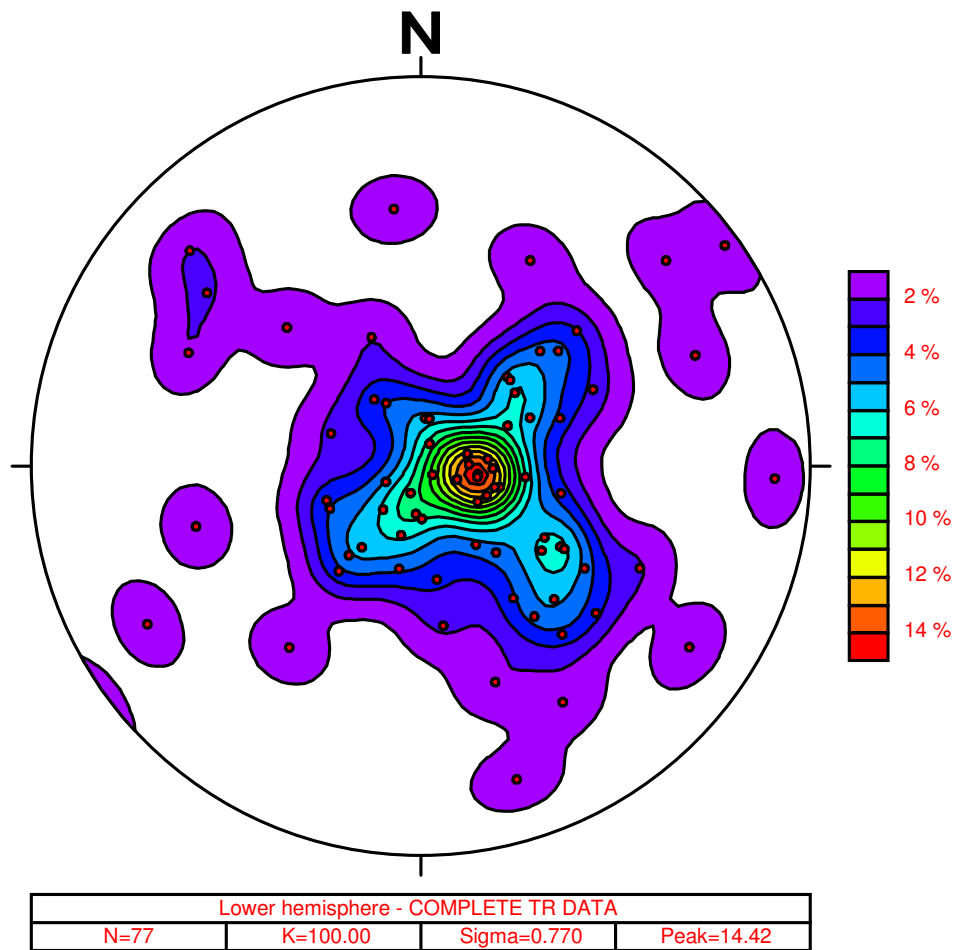
**Title: Borehole SC 01 great circles of all joints.**

**Legend**

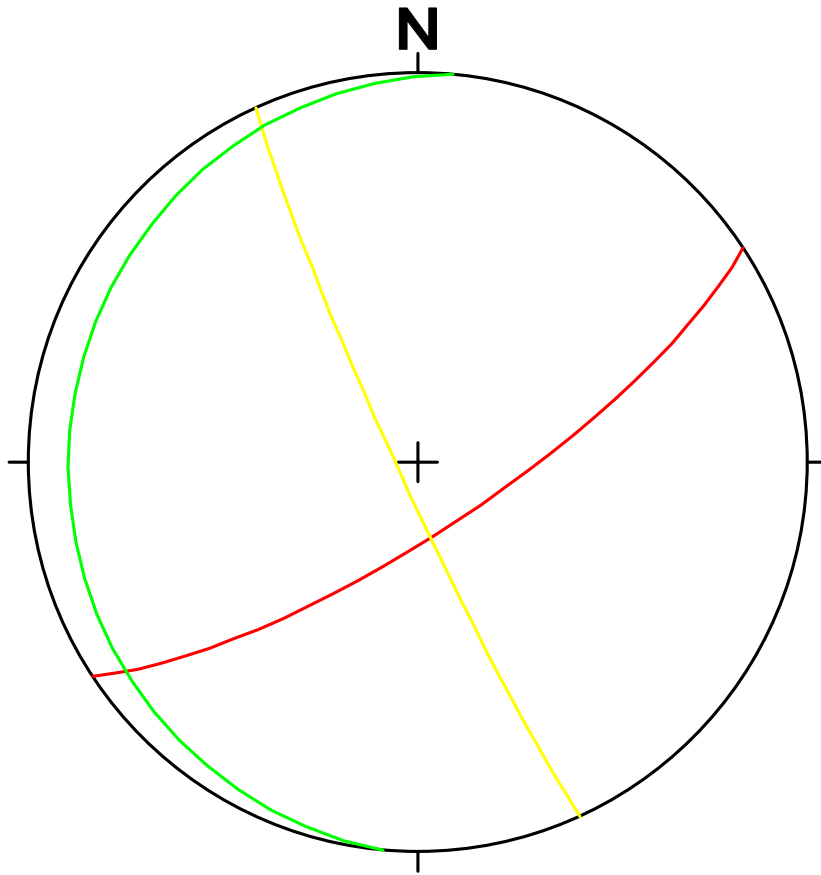
**Joint 1**

**Joint 2**

**Joint 3**



**Title: Borehole TR 01 contoured lower hemisphere polar plots of all joints from 200m to 300m.**



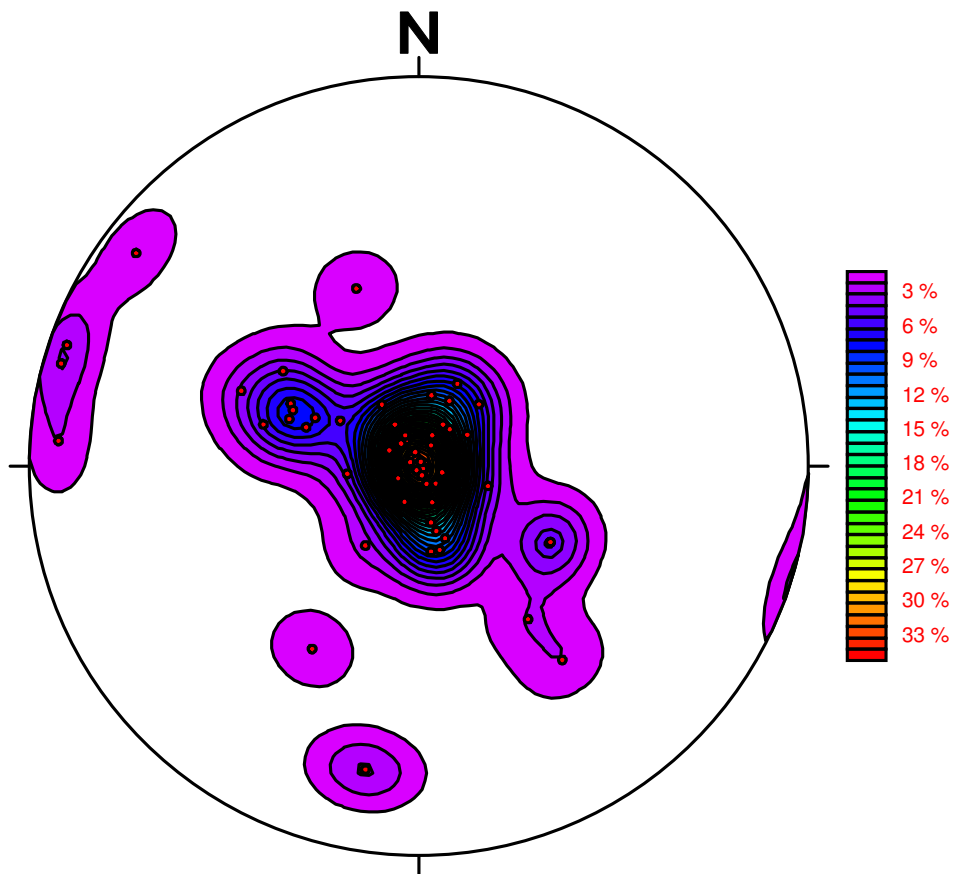
**Title: Borehole TR 01 great circles of all joints.**

**Legend**

**Joint 1**

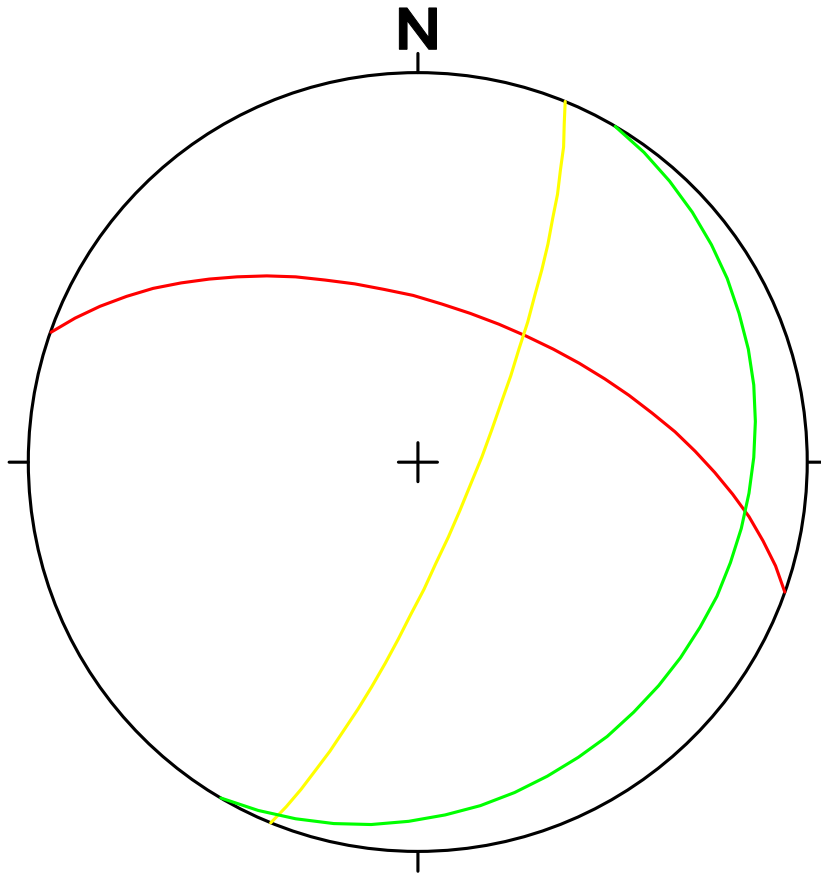
**Joint 2**

**Joint 3**



Lower hemisphere - Spur east data			
N=74	K=100.00	Sigma=0.740	Peak=34.87

**Title: Spur east of pressure shaft position on escarpment contoured lower hemisphere polar plots of all joints.**



**Title: Spur east of pressure shaft position on escarpment great circles of all joints.**

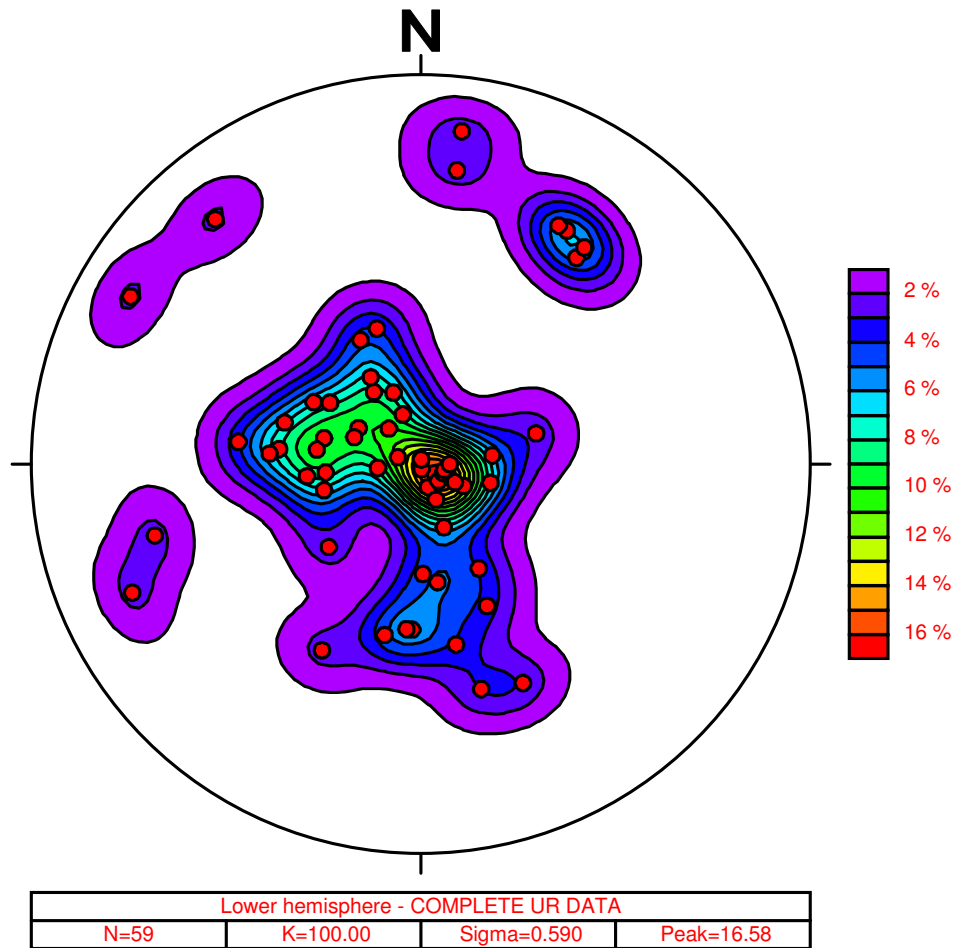
**Legend**

**Joint 1**

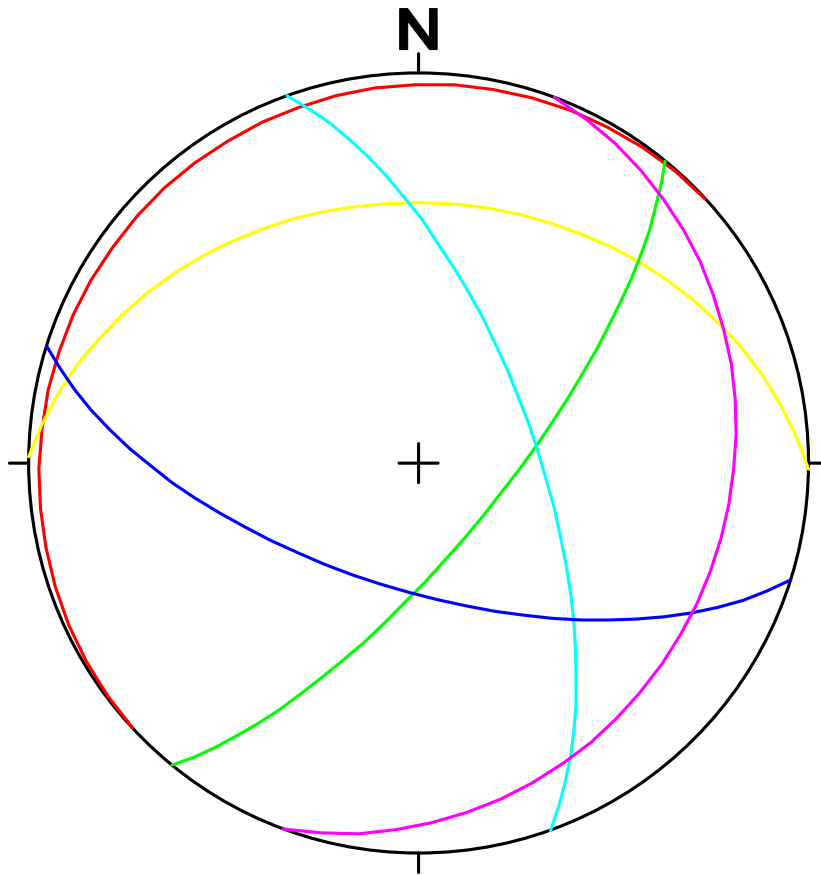
**Joint 2**

**Joint 3**





**Title: Borehole UR contoured lower hemisphere polar plots of all joints from 19.61m to 31.00m.**



**Title: Borehole UR great circles of all joints.**

**Legend**

- Joint 1**
- Joint 2**
- Joint 3**
- Joint 4**
- Joint 5**
- Joint 6**