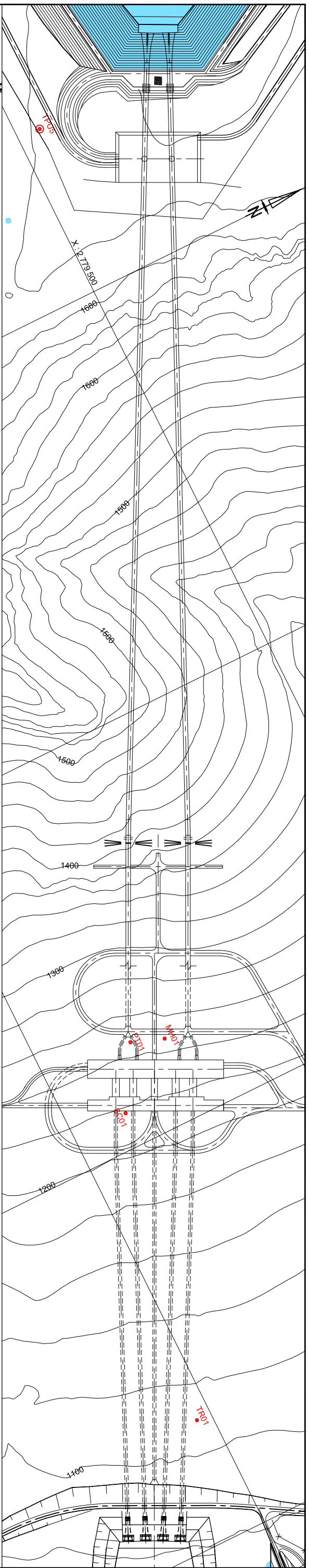
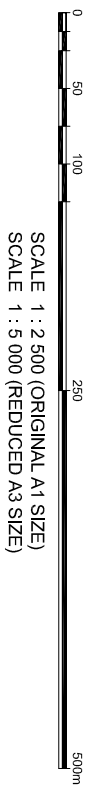
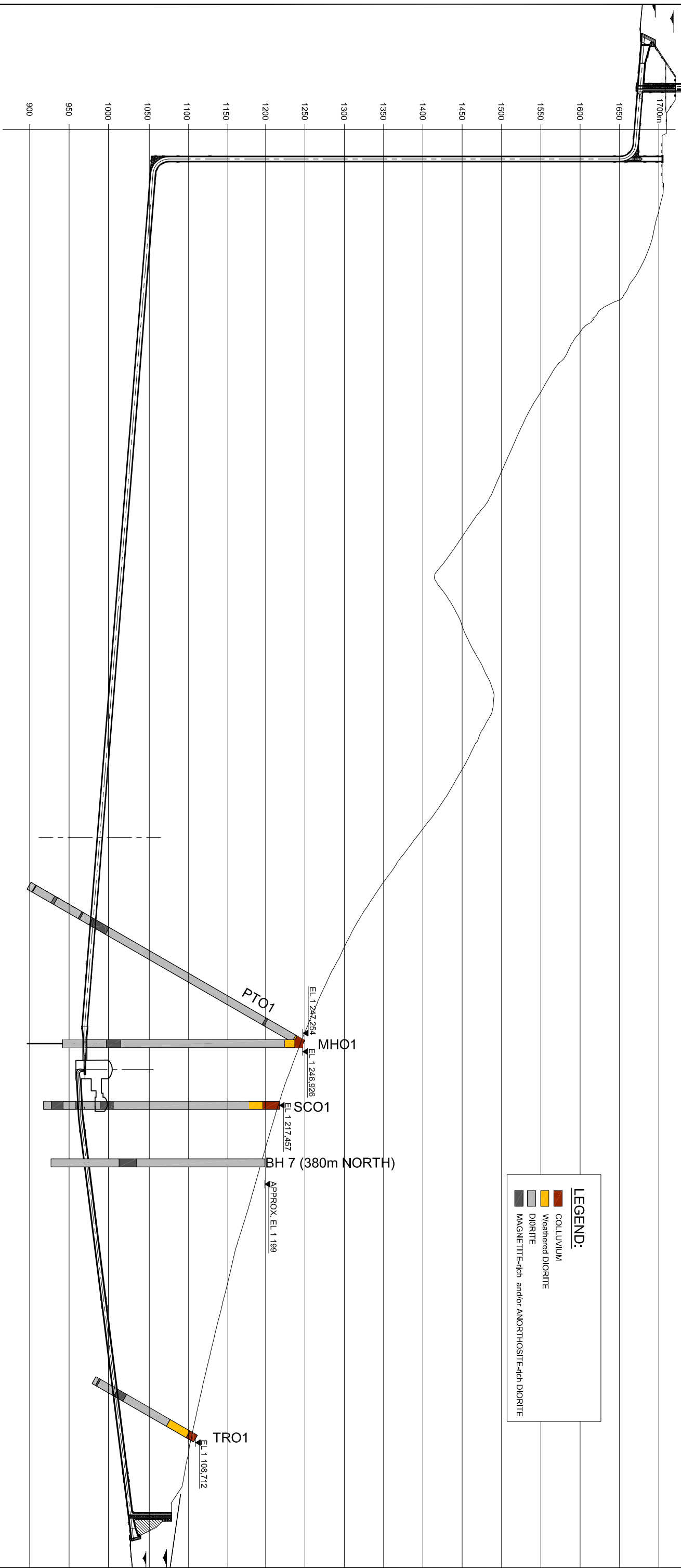


<p>Legend</p> <ul style="list-style-type: none"> Proposed Scheme ● Feasibility Study Boreholes ● Phase2 Boreholes ● Trial Pits — Seismic/Resistivity Traverses Test Pits 	<p>BKS Palace Consortium</p>  	<p>CLIENT</p> 	<p>PROJECT</p> <p style="text-align: center;">PROJECT LIMA STEELPOORT PUMPED STORAGE SCHEME</p>	<p>DRAWING TITLE</p> <p style="text-align: center;">Orthophoto Layout Plan of Proposed Scheme, Boreholes, Trial Pits and Seismic Traverses</p>	<p style="text-align: center;">FIGURE 1</p> <p>Date : December 2006 Map Ref. : P:\.../Lima_ALS_XY.map System : WGS84/Lo29</p> <p style="text-align: center;">COPYRIGHT RESERVED</p>
---	---	--	---	---	---



LEGEND:

- COLLUVIUM
- Weathered DIORITE
- DIORITE
- MAGNETITE-rich and/or ANORTHOSITE-rich DIORITE



SCALE 1 : 2 500 (ORIGINAL A1 SIZE)
SCALE 1 : 5 000 (REDUCED A3 SIZE)

BKS Palace Consortium



CLIENT



PROJECT

PROJECT LIMA
STEELPOORT PUMPED STORAGE SCHEME

DRAWING TITLE

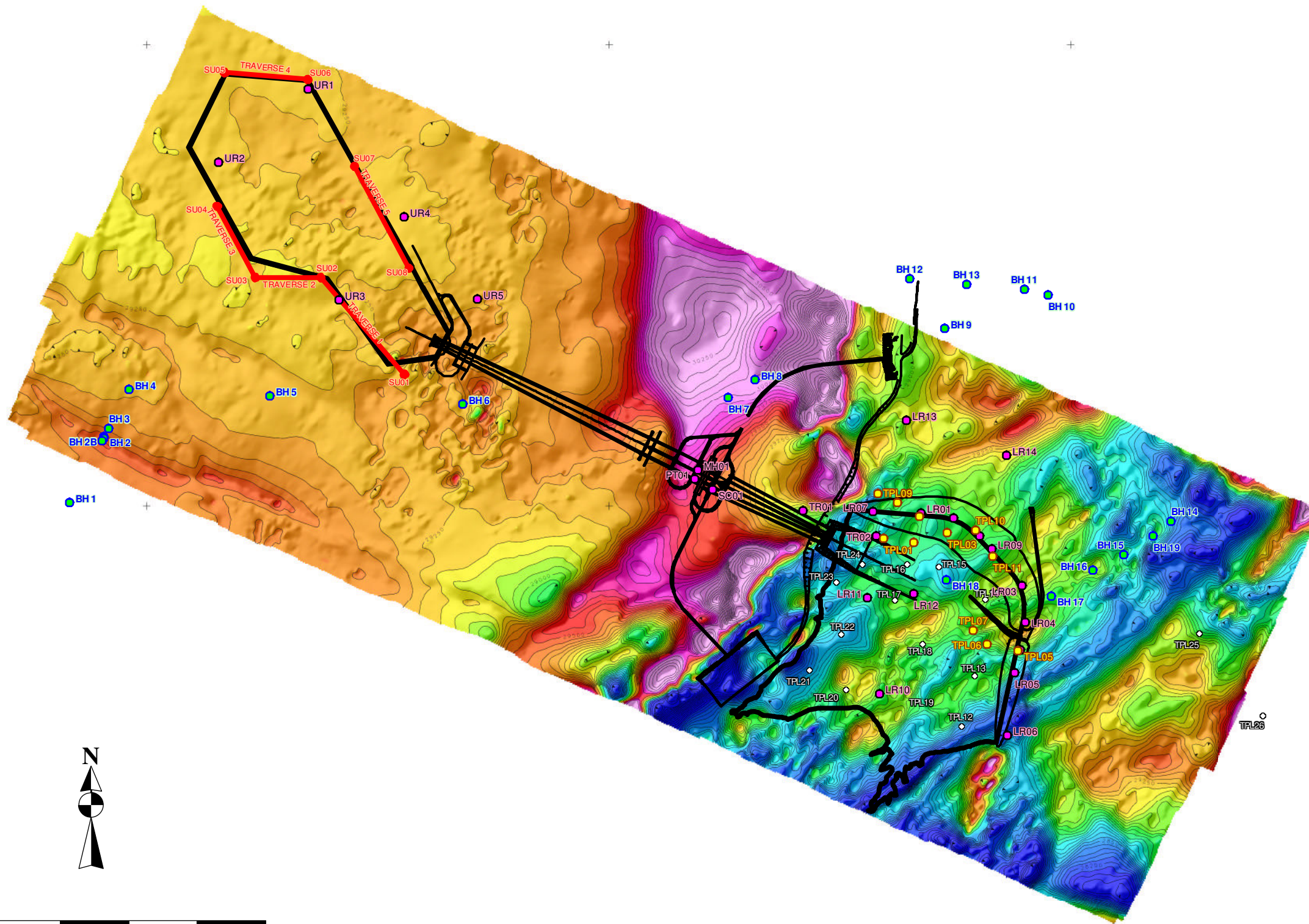
STEELPOORT PUMPED STORAGE SCHEME
GEOLOGICAL LONGITUDINAL SECTION

FIGURE

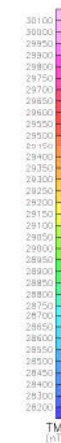
2

SCALE
AS SHOWN

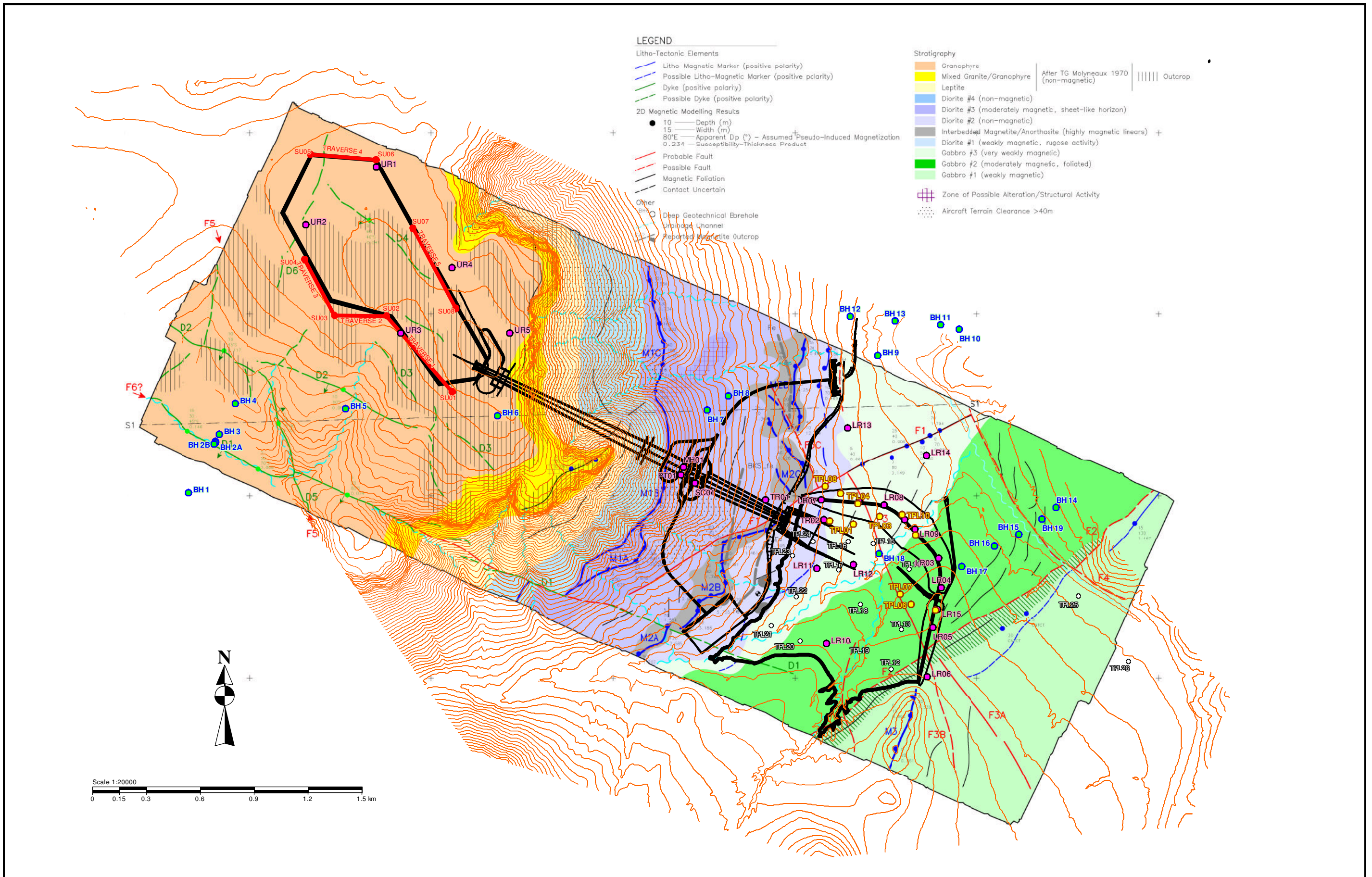
COPYRIGHT RESERVED



Scale 1:20000
 0 0.15 0.3 0.6 0.9 1.2 1.5 km



<p>Legend</p> <ul style="list-style-type: none"> □ Proposed Scheme ● Feasibility Study Boreholes ● Phase2 Boreholes ● Trial Pits ○ Test Pits — Seismic/Resistivity Traverse 	<p>BKS Palace Consortium</p>  	<p>CLIENT</p> 	<p>PROJECT</p> <p style="text-align: center;">PROJECT LIMA STEELPOORT PUMPED STORAGE SCHEME</p>	<p>DRAWING TITLE</p> <p style="text-align: center;">AEROMAGNETIC SURVEY Total Magnetic Field Image Sunshaded from the SouthEast (135°T)</p>	<p style="text-align: center;">FIGURE 3</p> <p>Date : December 2006 Map Ref. : P:/.../Lima_ALS_XY.map System : WGS84/Lo29</p> <p style="text-align: center;">COPYRIGHT RESERVED</p>
--	---	--	--	--	---



Legend	
□ Proposed Scheme	○ Test Pits
● Feasibility Study Boreholes	— Seismic/Resistivity Traverse
● Phase2 Boreholes	
● Trial Pits	

BKS Palace Consortium

CLIENT

PROJECT

PROJECT LIMA

STEELPOORT PUMPED STORAGE SCHEME

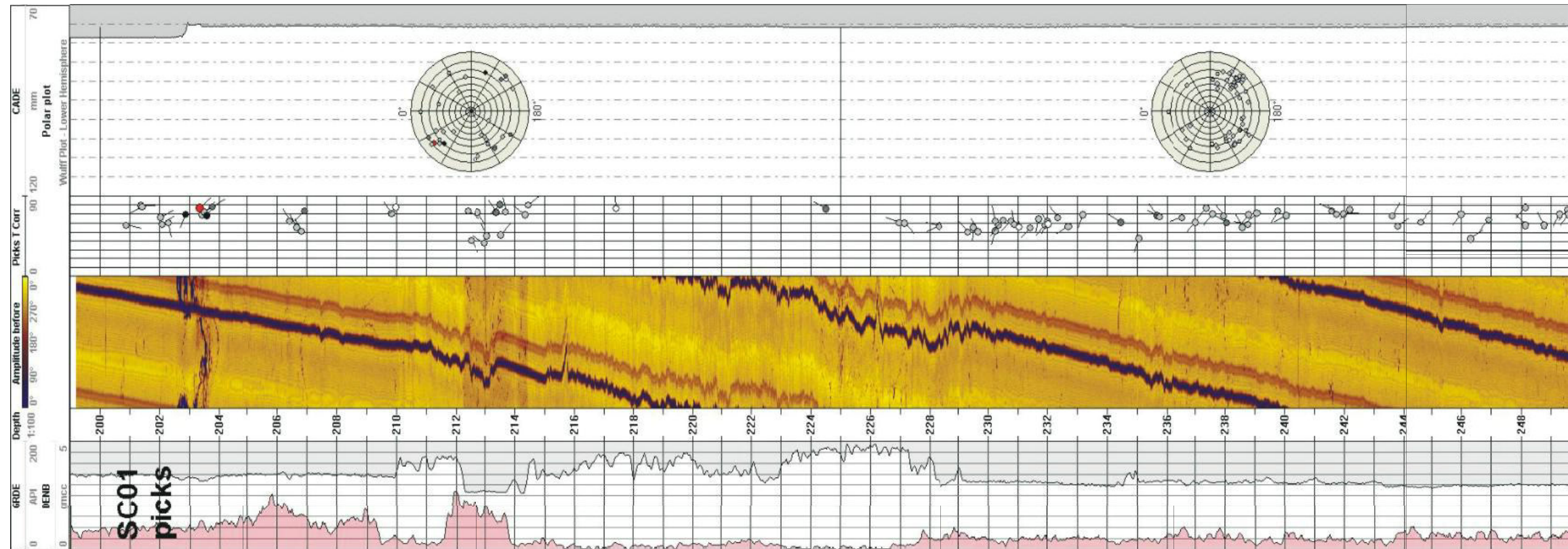
DRAWING TITLE

Helicopter-borne Gradiometer High-Resolution Aeromagnetic Survey Geophysical Interpretation Map

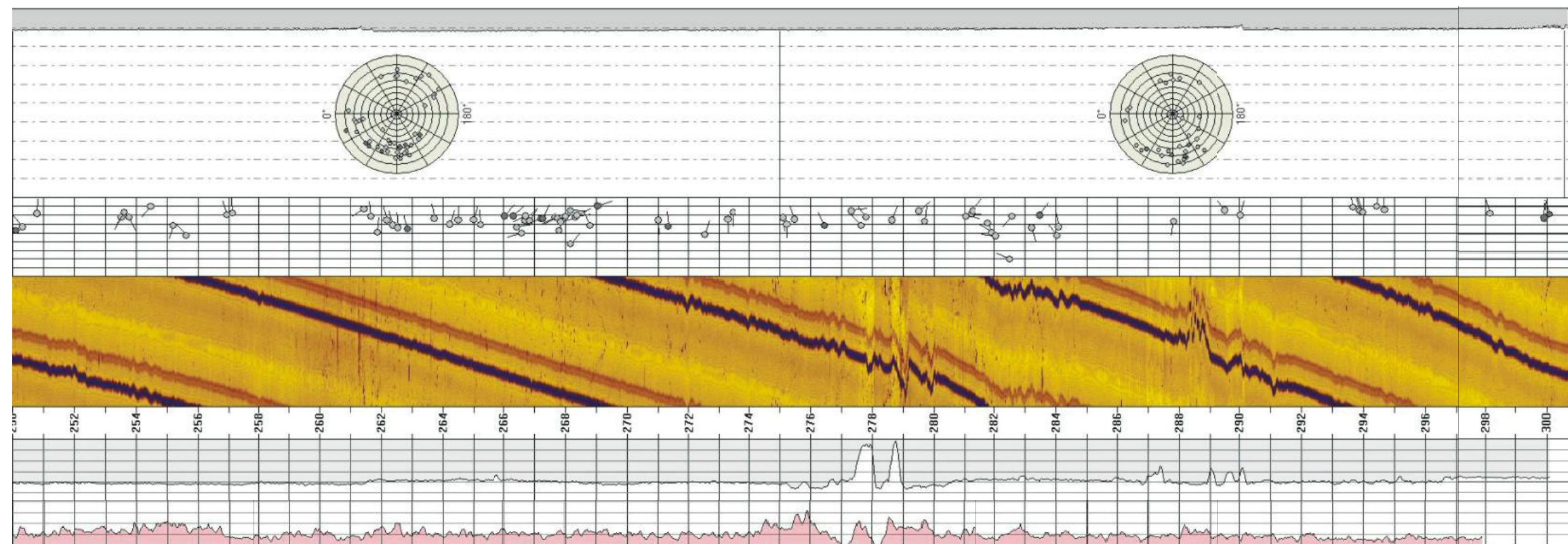
FIGURE 4

Date : December 2006
 Map Ref. : P:\...Lima_ALS_XY.map
 System : WGS84/Lo29

COPYRIGHT RESERVED



SC 01 (From 199 to 250)



SC 01 (from 250 to 301)

BKS Palace Consortium



CLIENT



PROJECT

**PROJECT LIMA
STEELPOORT PUMPED STORAGE SCHEME**

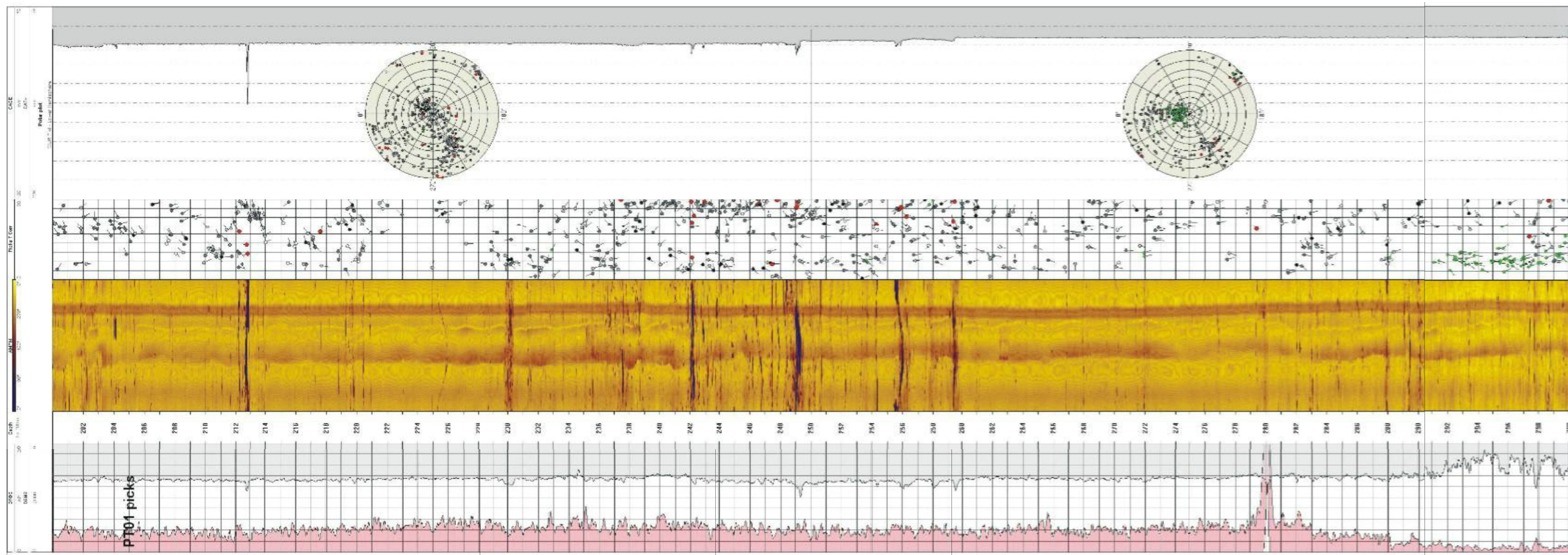
DRAWING TITLE

Wireline Borehole Survey Picture

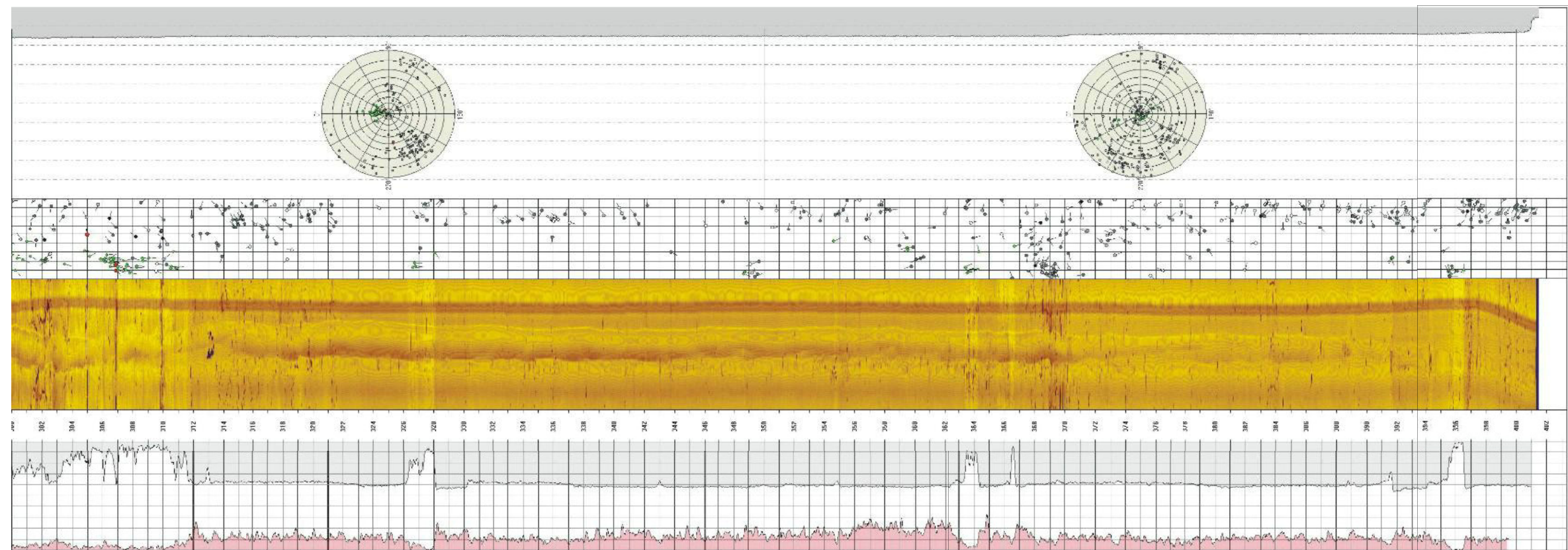
FIGURE 5A

Date : January 2007
Map Ref. : P:/.../Lima_ALS_XY.map
System : WGS84/Lo29

COPYRIGHT RESERVED



PT01 (from 199 to 300)



PT01 (from 300 to 401)

BKS Palace Consortium



CLIENT



PROJECT

**PROJECT LIMA
STEELPOORT PUMPED STORAGE SCHEME**

DRAWING TITLE

Wireline Borehole Survey Picture

FIGURE 5B

Date : January 2007
Map Ref. : P:/.../Lima_ALS_XY.map
System : WGS84/Lo29

COPYRIGHT RESERVED