

PROJECT LIMA (STEELPOORT) PUMPED STORAGE SCHEME

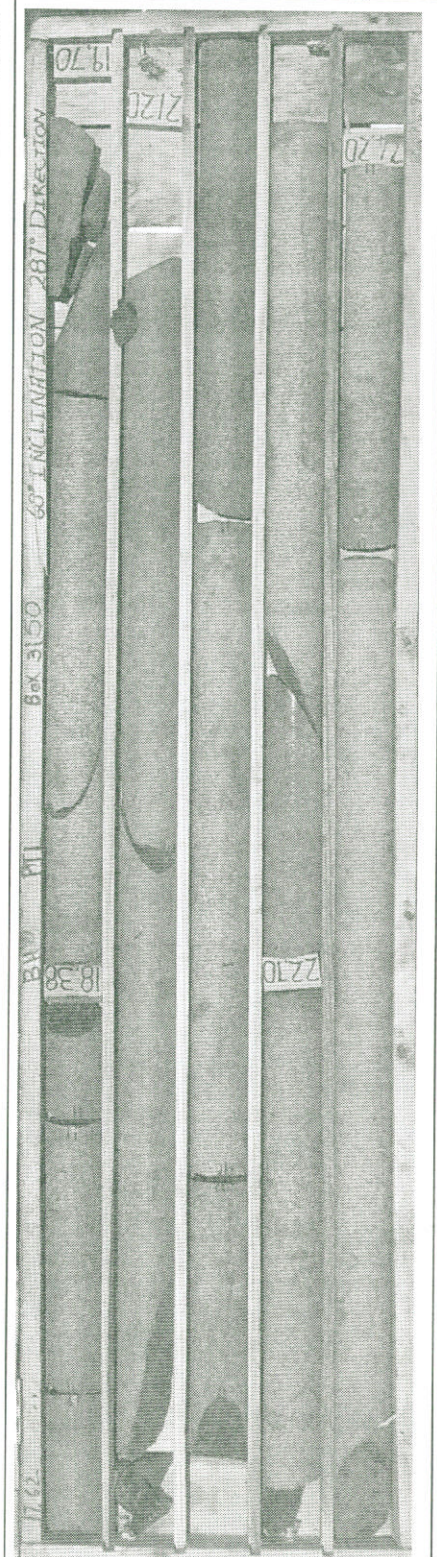
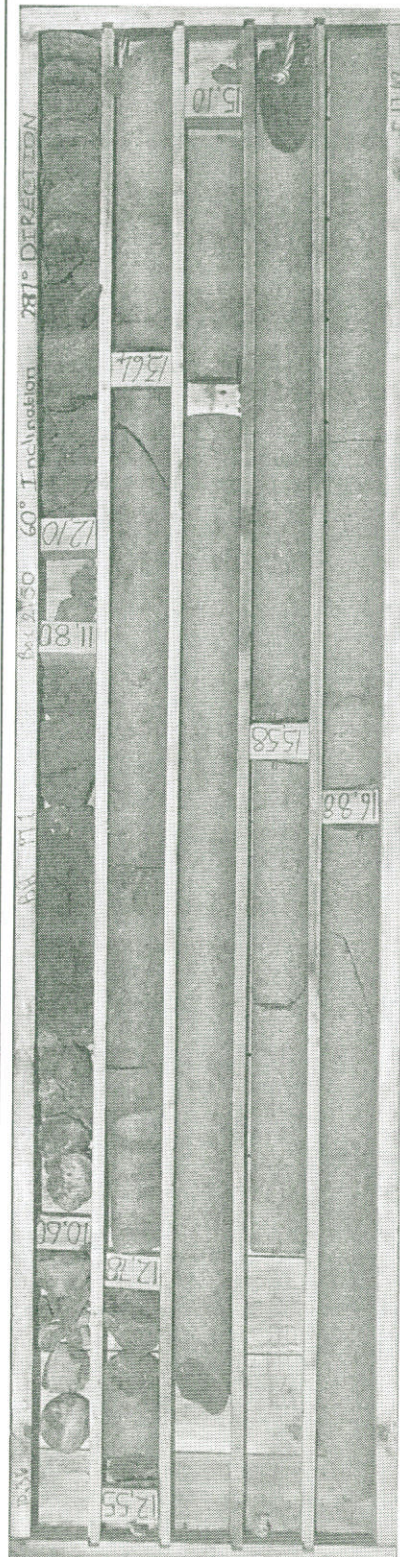
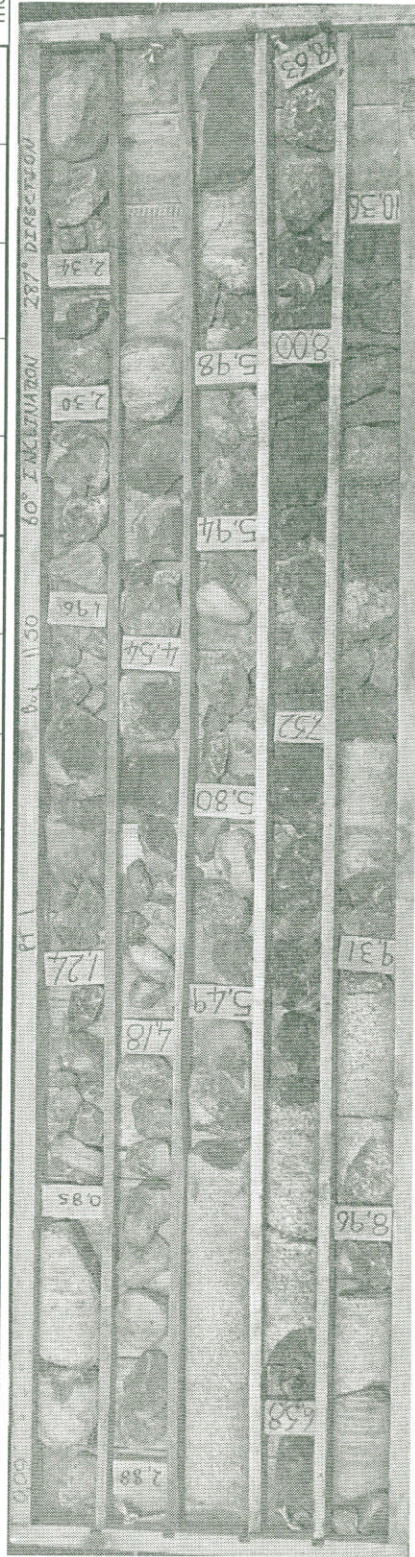
SUPPLEMENTARY FEASIBILITY STUDY GEOTECHNICAL INVESTIGATIONS

Borehole PT 01

Page 1 of 18

BOREHOLE: PT 01 INCLINED LENGTH: 400.61m DIP / DIRECTION: 60° / 287° Size: TNW 0.00m to 37.69m and NQ 37.69m to 400.61m

metres



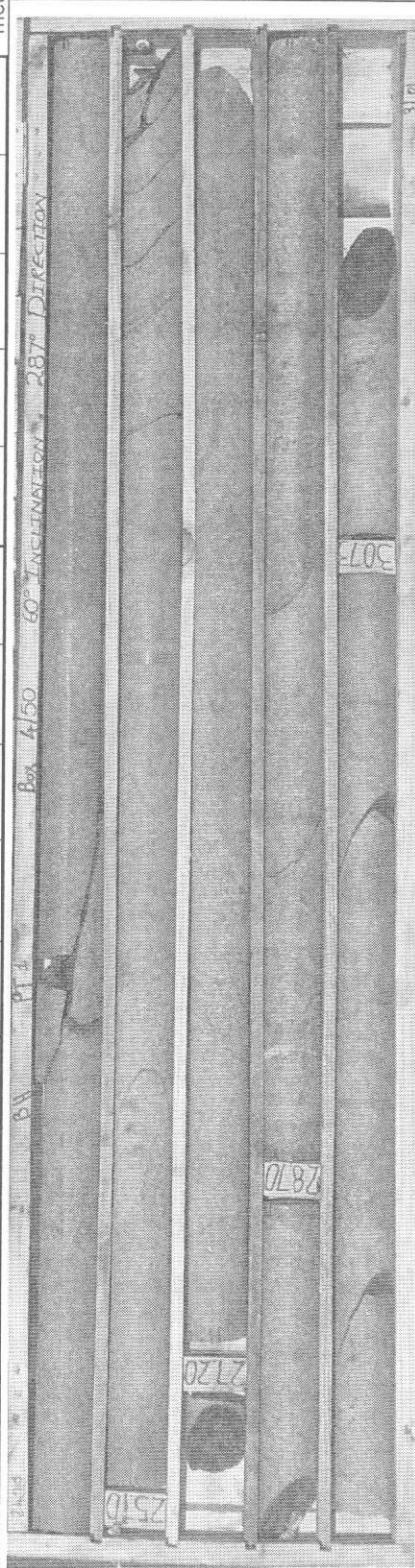


PROJECT LIMA (STEELPOORT) PUMPED STORAGE SCHEME

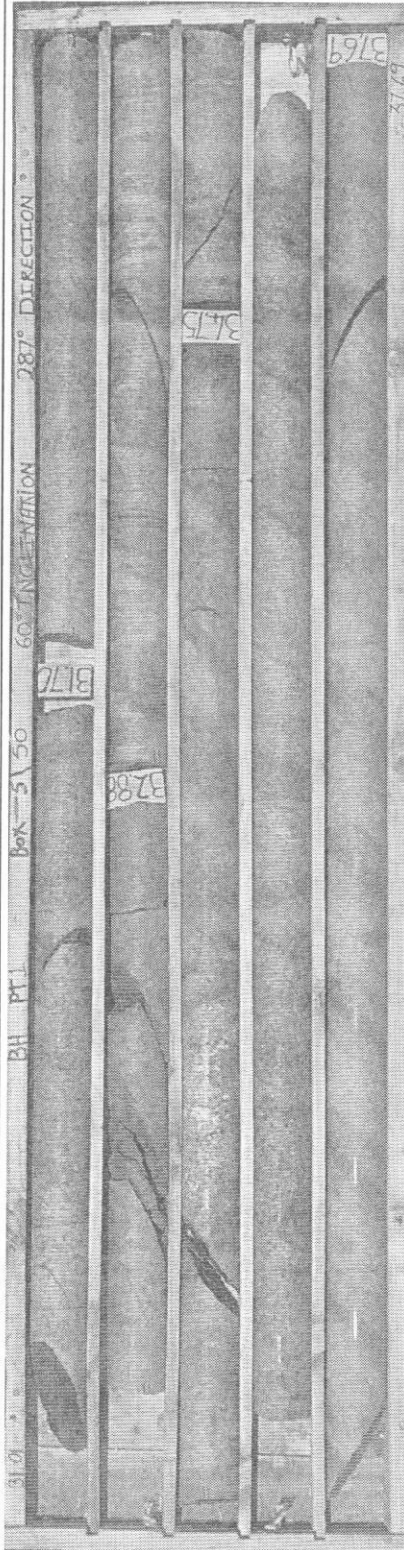
SUPPLEMENTARY FEASIBILITY STUDY GEOTECHNICAL INVESTIGATIONS

BOREHOLE: PT 01 INCLINED LENGTH: 400.61m DIP / DIRECTION: 60° / 287° Size: TNW 0.00m to 37.69m and NQ 37.69m to 400.61m

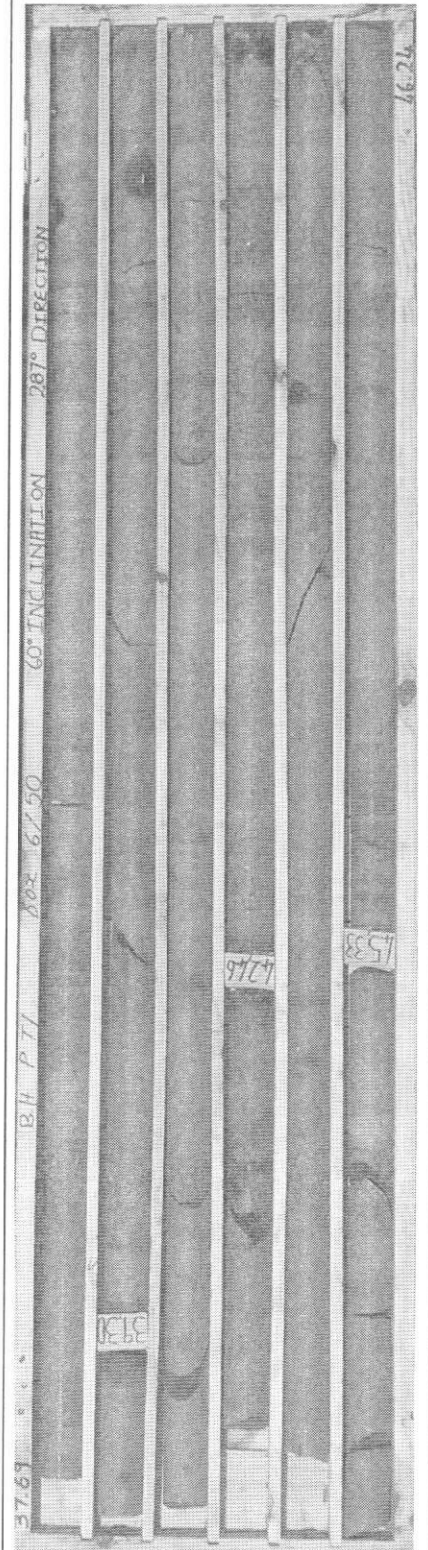
metres



Box 4 of 50  
24.20m to 31.01m



Box 5 of 50  
31.01m to 37.69m



Box 6 of 50  
37.69m to 46.24m

Borehole PT 01

PROJECT LIMA (STEELPOORT) PUMPED STORAGE SCHEME

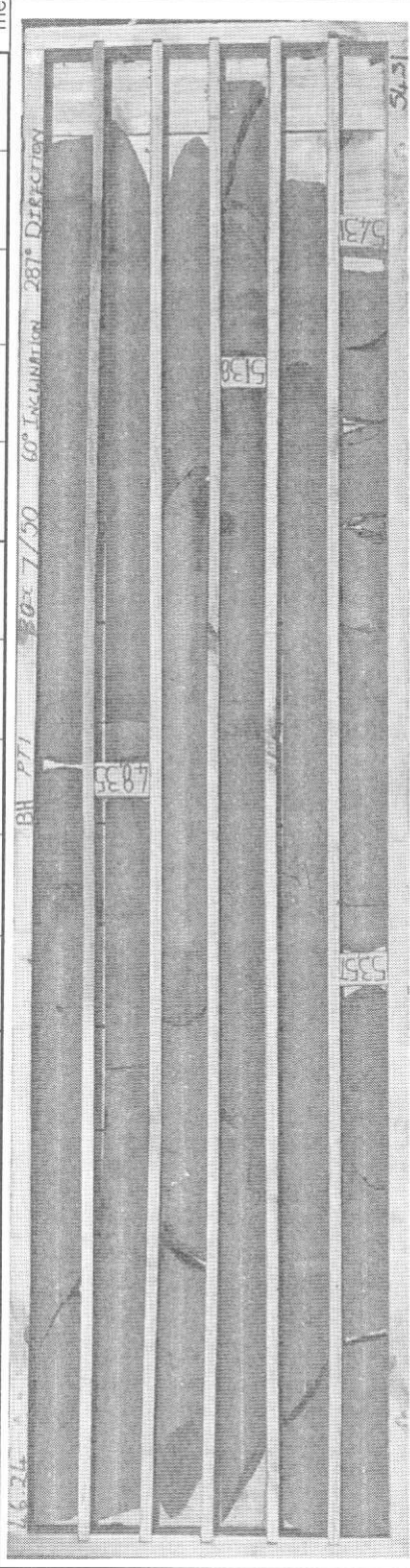
SUPPLEMENTARY FEASIBILITY STUDY GEOTECHNICAL INVESTIGATIONS

Borehole PT 01

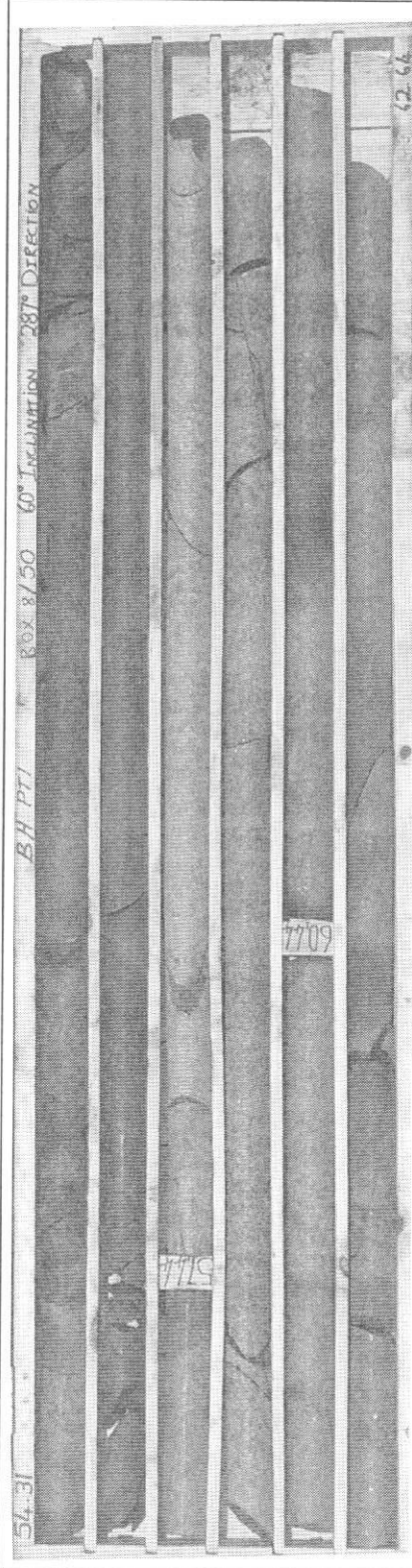
Page 3 of 18

BOREHOLE: PT 01 INCLINED LENGTH: 400.61m DIP / DIRECTION: 60° / 287° Size: TNW 0.00m to 37.69m and NQ 37.69m to 400.61m

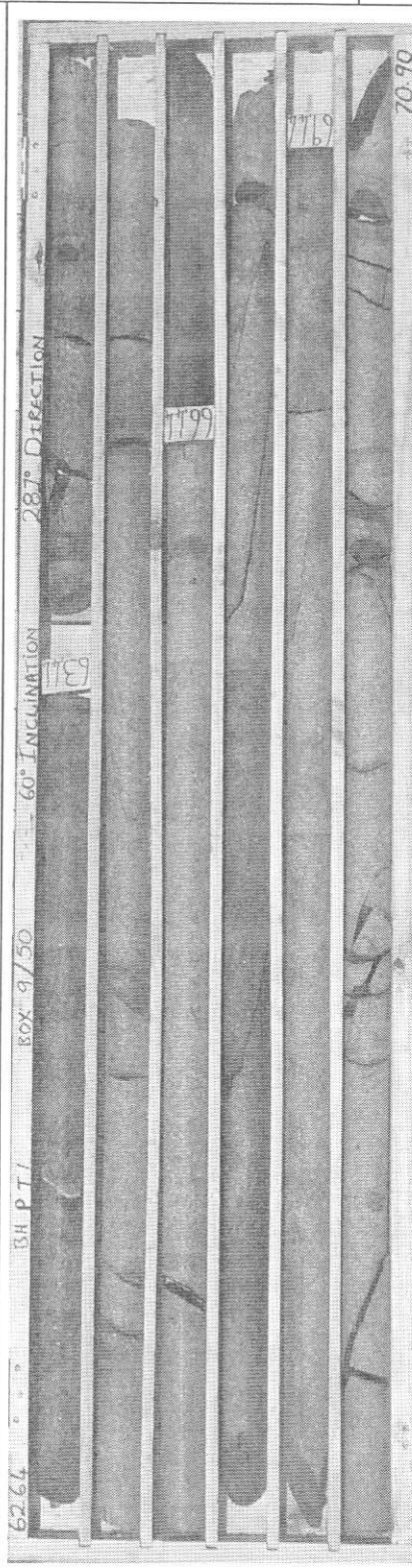
metres



Box 7 of 50  
46.24m to 54.31m



Box 8 of 50  
54.31m to 62.64m



Box 9 of 50  
62.64m to 70.90m

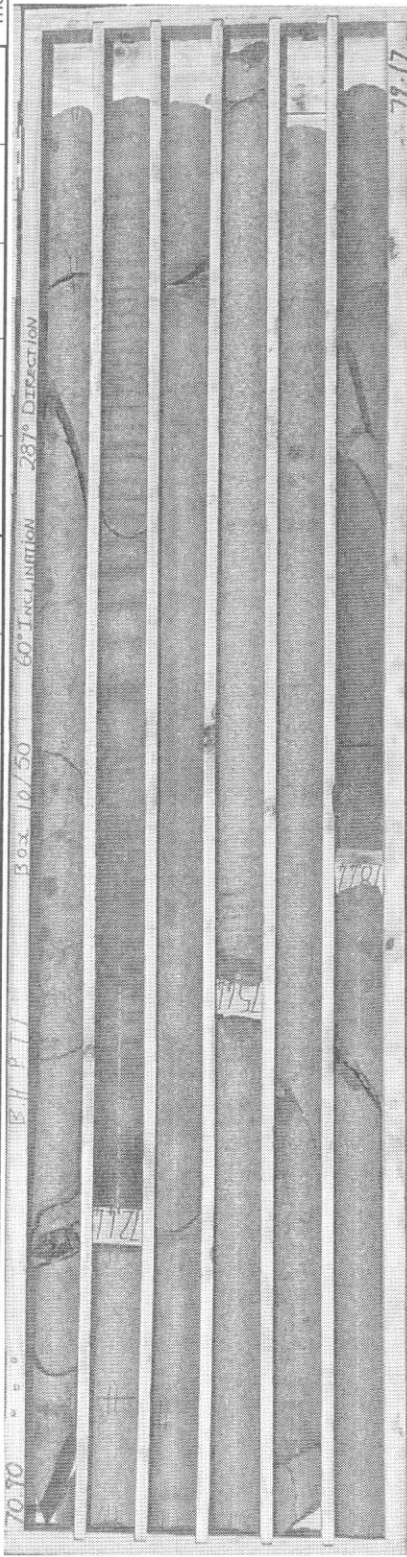


PROJECT LIMA (STEELPOORT) PUMPED STORAGE SCHEME

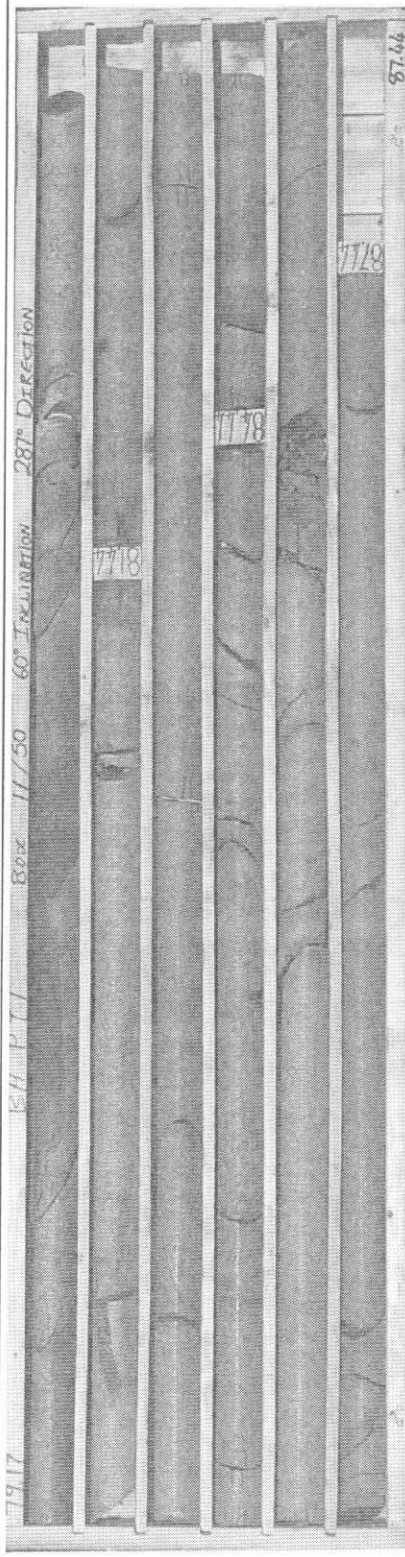
SUPPLEMENTARY FEASIBILITY STUDY GEOTECHNICAL INVESTIGATIONS

BOREHOLE: PT 01 INCLINED LENGTH: 400.61m DIP / DIRECTION: 60° / 287° Size: TNW 0.00m to 37.69m and NQ 37.69m to 400.61m

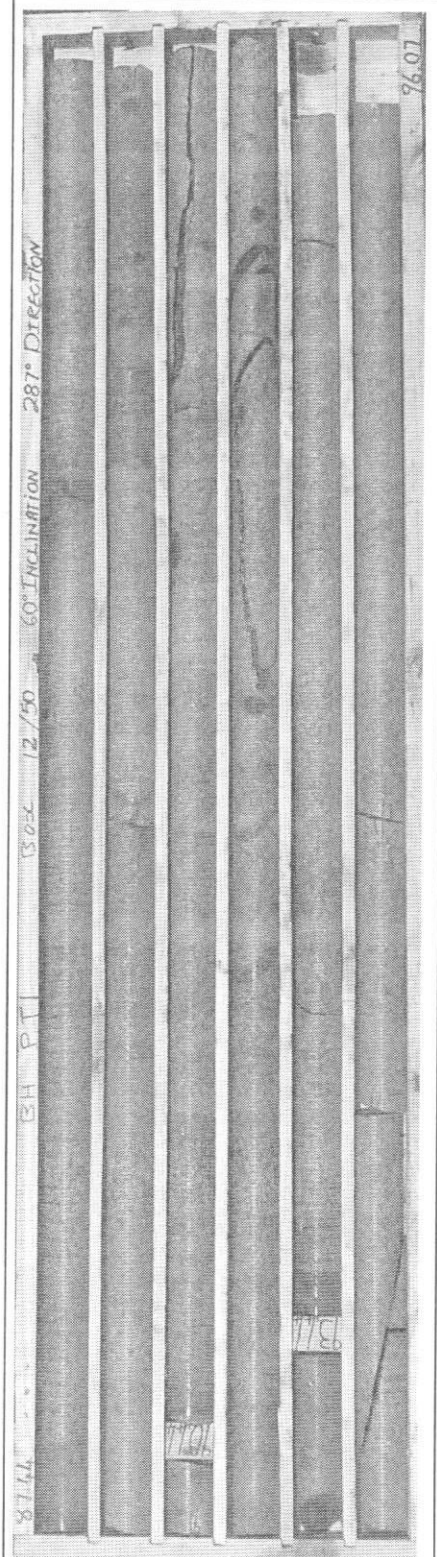
metres



Box 10 of 50  
70.90m to 79.17m



Box 11 of 50  
79.17m to 87.44m



Box 12 of 50  
87.44m to 96.07m

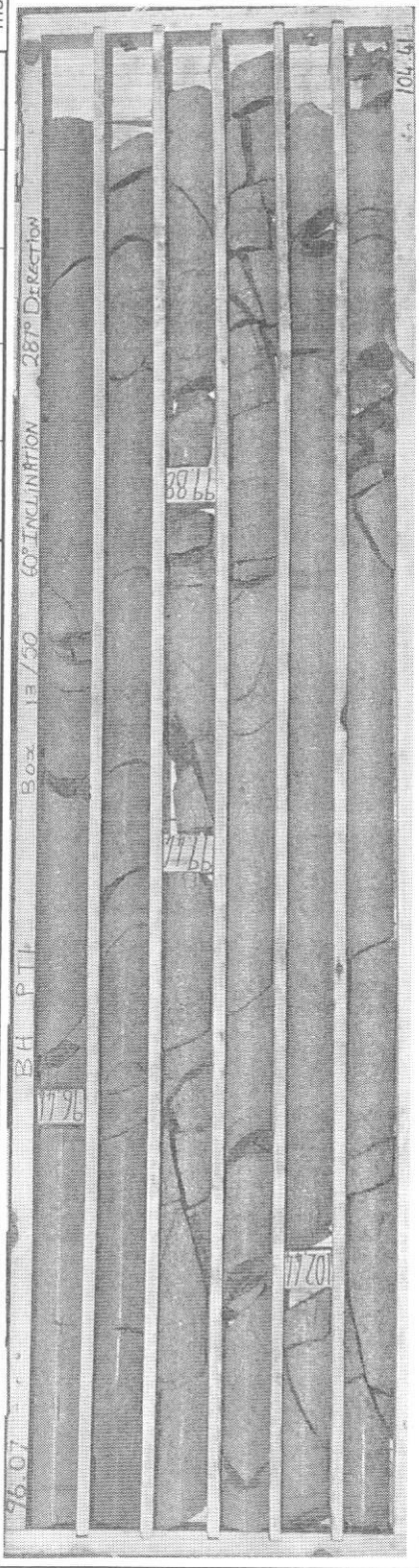
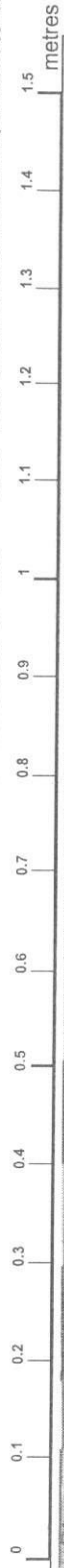
Borehole PT 01

PROJECT LIMA (STEELPOORT) PUMPED STORAGE SCHEME

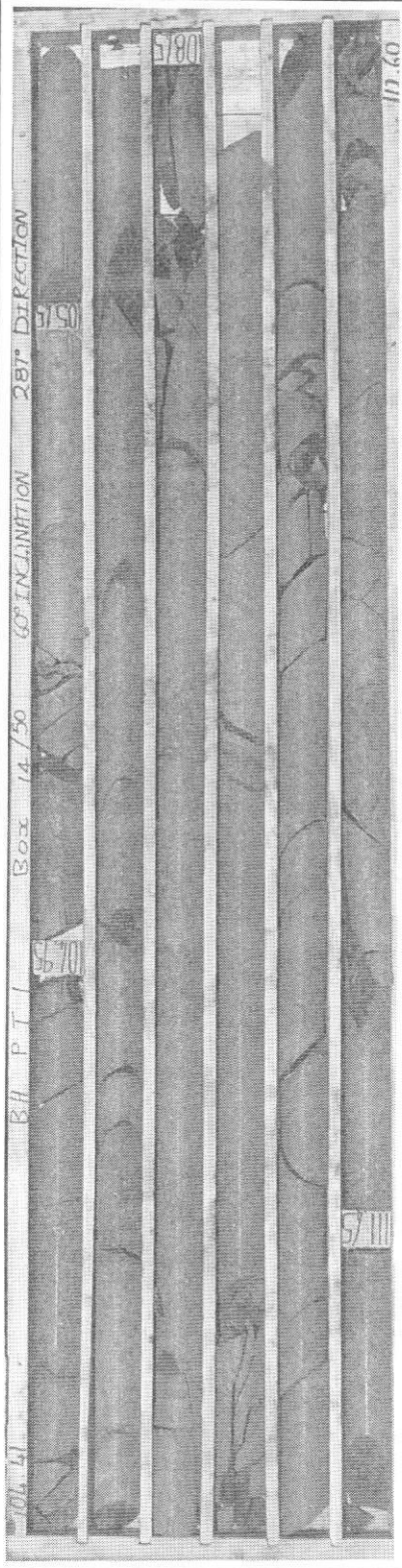
SUPPLEMENTARY FEASIBILITY STUDY GEOTECHNICAL INVESTIGATIONS

BOREHOLE: PT 01 INCLINED LENGTH: 400.61m DIP / DIRECTION: 60° / 287° Size: TNW 0.00m to 37.69m and NQ 37.69m to 400.61m

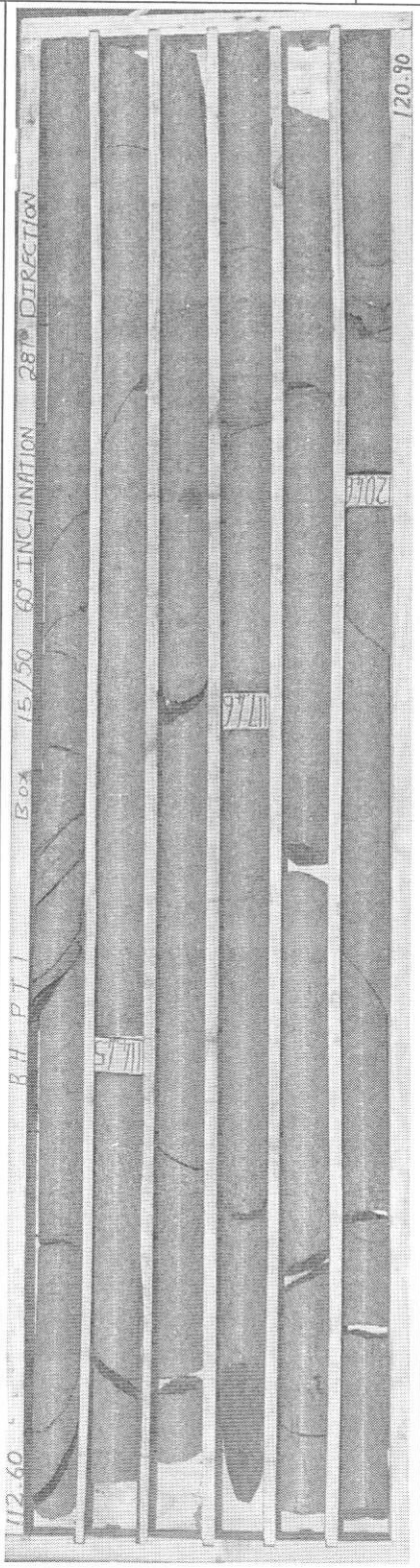
metres



Box 13 of 50  
96.07m to 104.41m



Box 14 of 50  
104.41m to 112.60m



Box 15 of 50  
112.60m to 120.90m



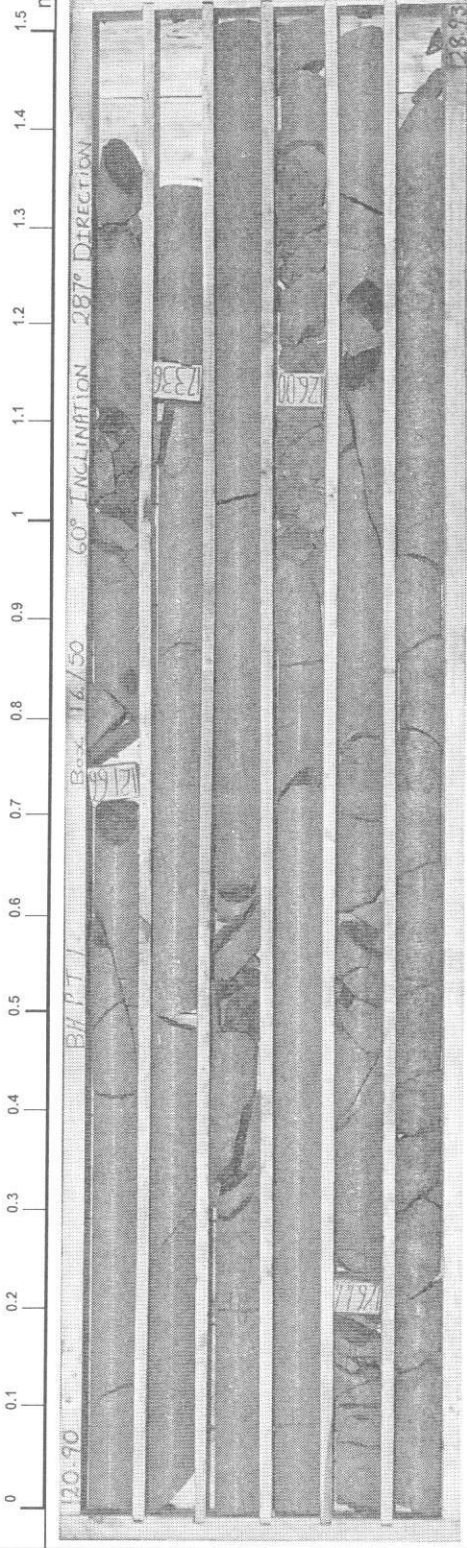
PROJECT LIMA (STEELPOORT) PUMPED STORAGE SCHEME

SUPPLEMENTARY FEASIBILITY STUDY GEOTECHNICAL INVESTIGATIONS

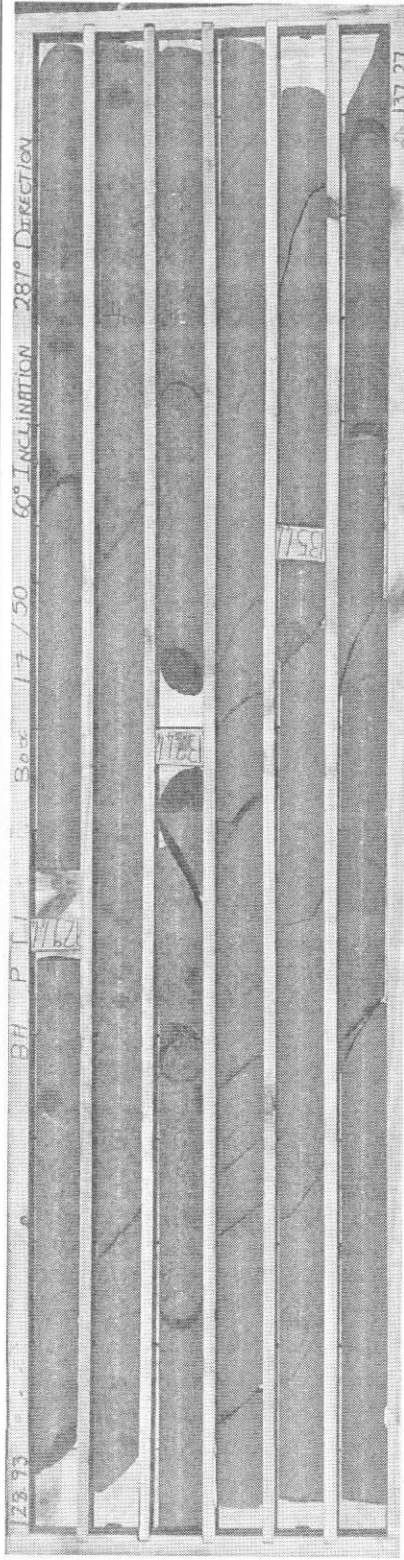
Borehole PT 01  
Page 6 of 18

BOREHOLE: PT 01    INCLINED LENGTH: 400.61m    DIP / DIRECTION: 60° / 287°    Size: TNW 0.00m to 37.69m and NQ 37.69m to 400.61m

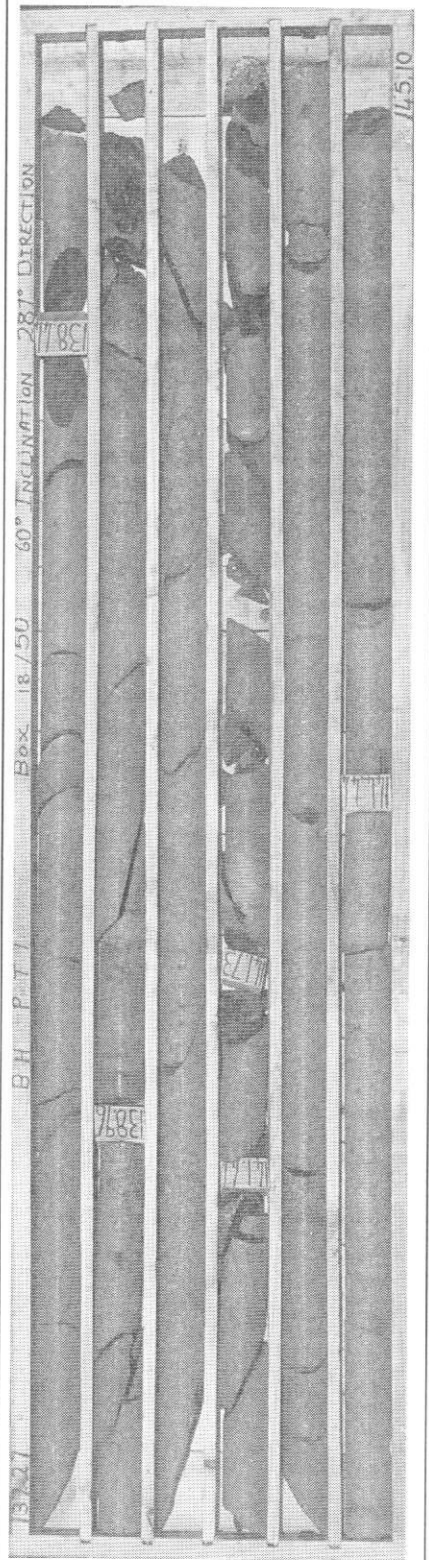
metres



Box 16 of 50  
120.90m to 128.93m



Box 17 of 50  
128.93m to 137.27m



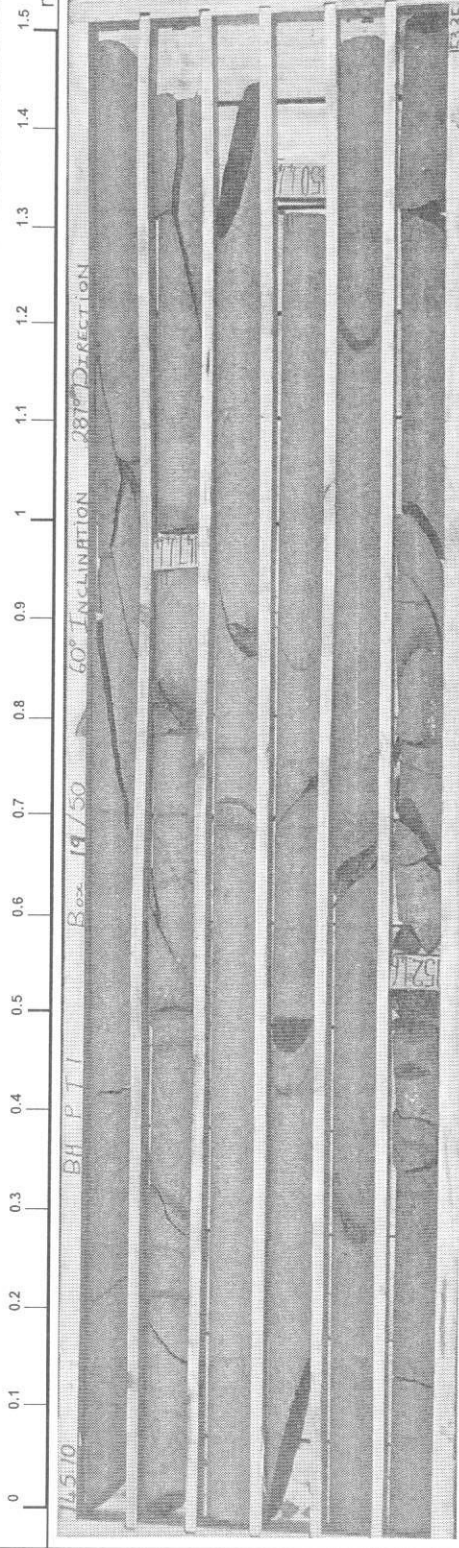
Box 18 of 50  
137.27m to 145.10m

PROJECT LIMA (STEELPOORT) PUMPED STORAGE SCHEME

SUPPLEMENTARY FEASIBILITY STUDY GEOTECHNICAL INVESTIGATIONS

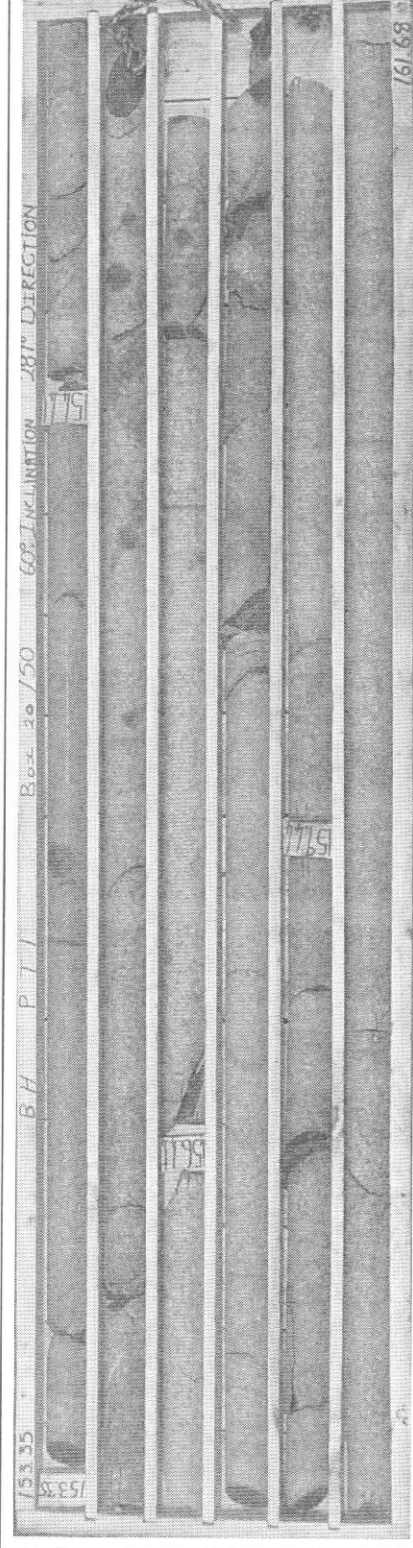
BOREHOLE: PT 01 INCLINED LENGTH: 400.61m DIP / DIRECTION: 60° / 287° Size: TNW 0.00m to 37.69m and NQ 37.69m to 400.61m

metres



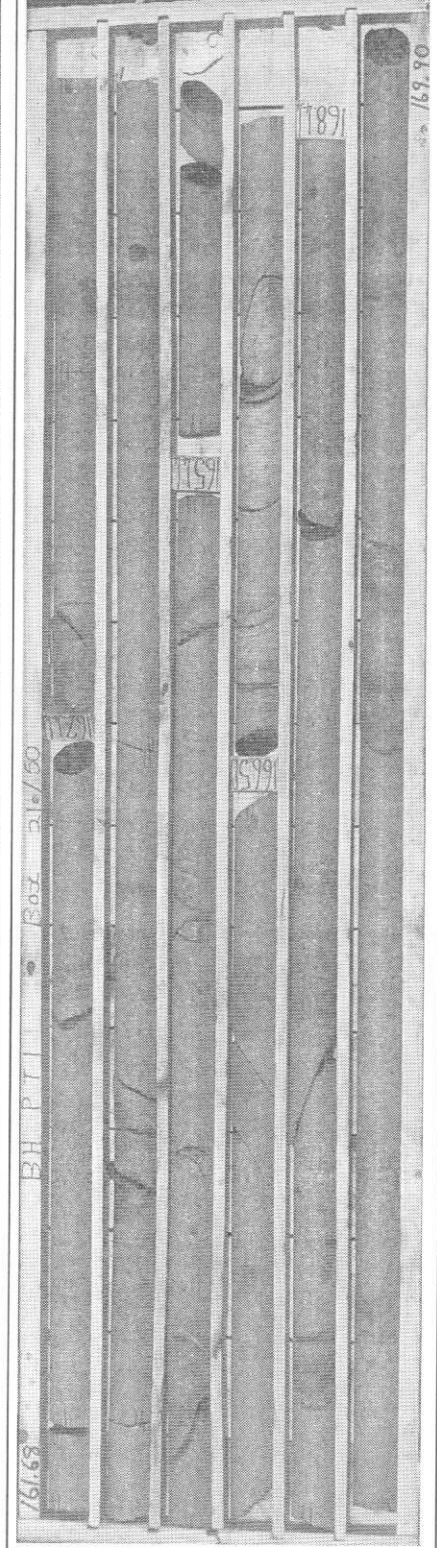
Box 19 of 50

145.10m to 153.35m



Box 20 of 50

153.35m to 161.68m



Box 21 of 50

161.68m to 169.90m

Borehole PT 01

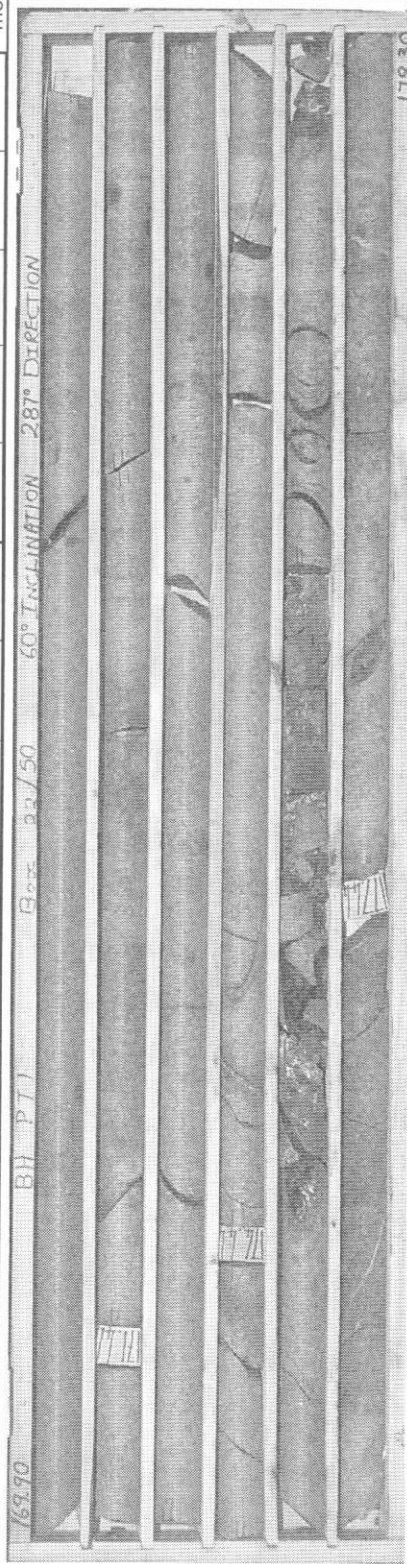


PROJECT LIMA (STEELPOORT) PUMPED STORAGE SCHEME

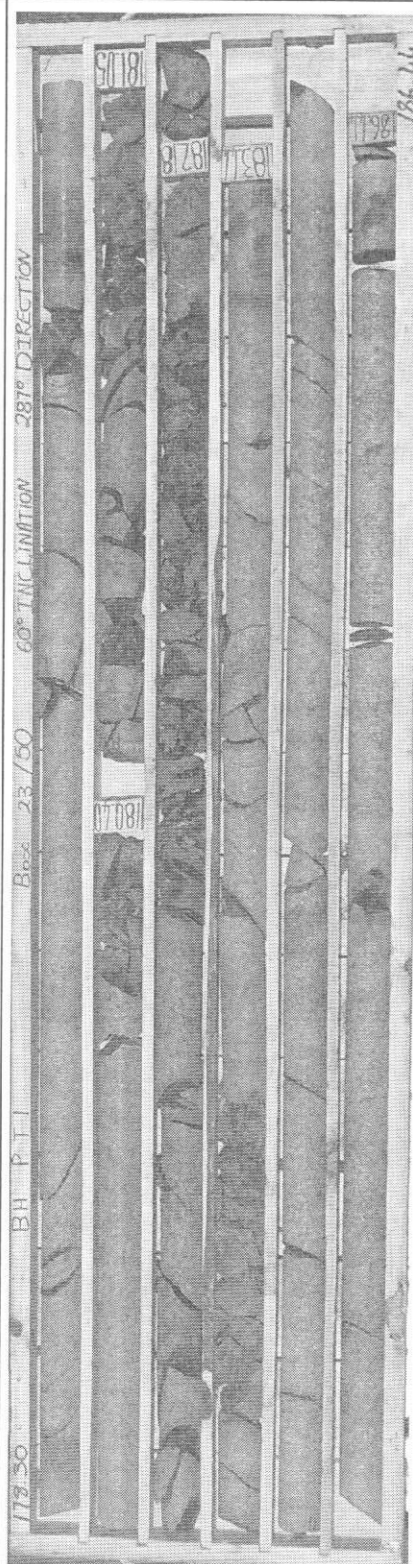
SUPPLEMENTARY FEASIBILITY STUDY GEOTECHNICAL INVESTIGATIONS

BOREHOLE: PT 01 INCLINED LENGTH: 400.61m DIP / DIRECTION: 60° / 287° Size: TNW 0.00m to 37.69m and NQ 37.69m to 400.61m

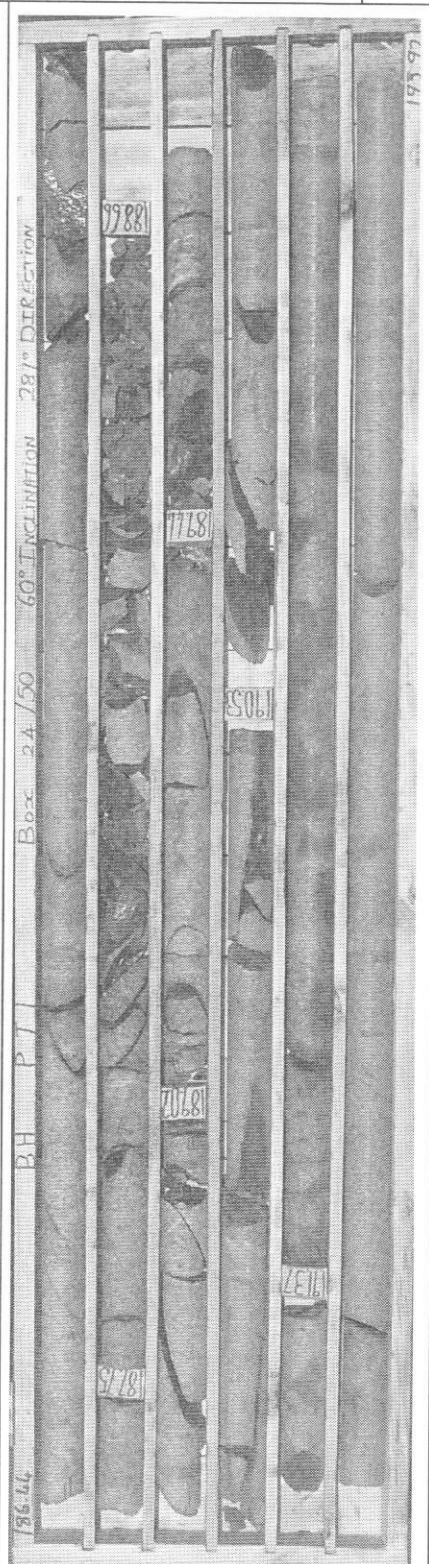
metres



Box 22 of 50  
169.90m to 178.30m



Box 23 of 50  
178.30m to 186.44m



Box 24 of 50  
186.44m to 193.97m

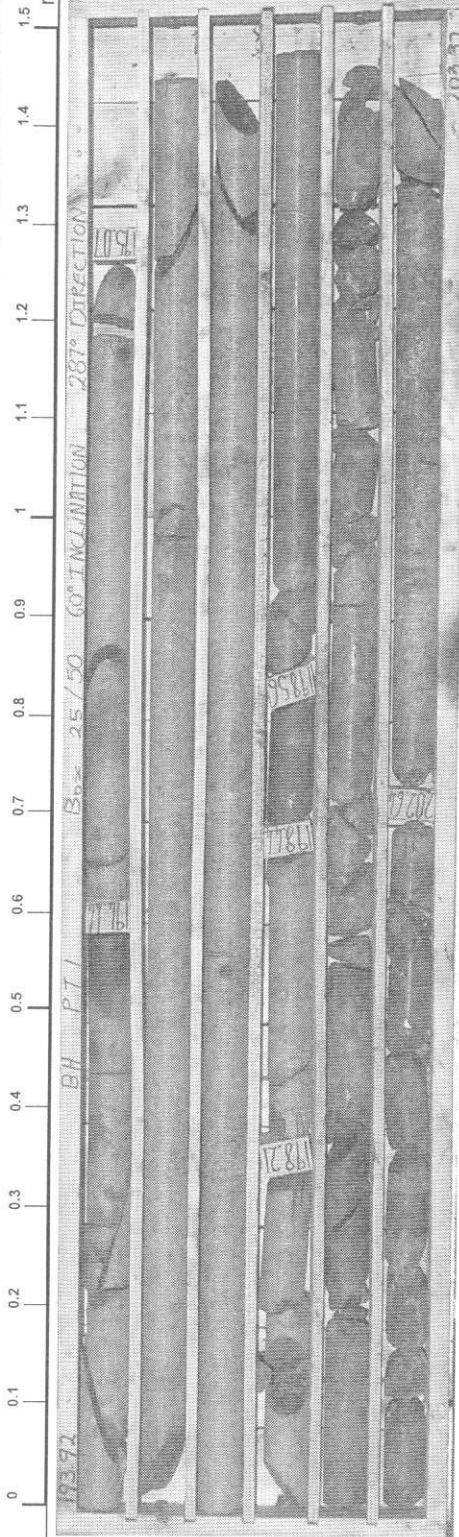


PROJECT LIMA (STEELPOORT) PUMPED STORAGE SCHEME

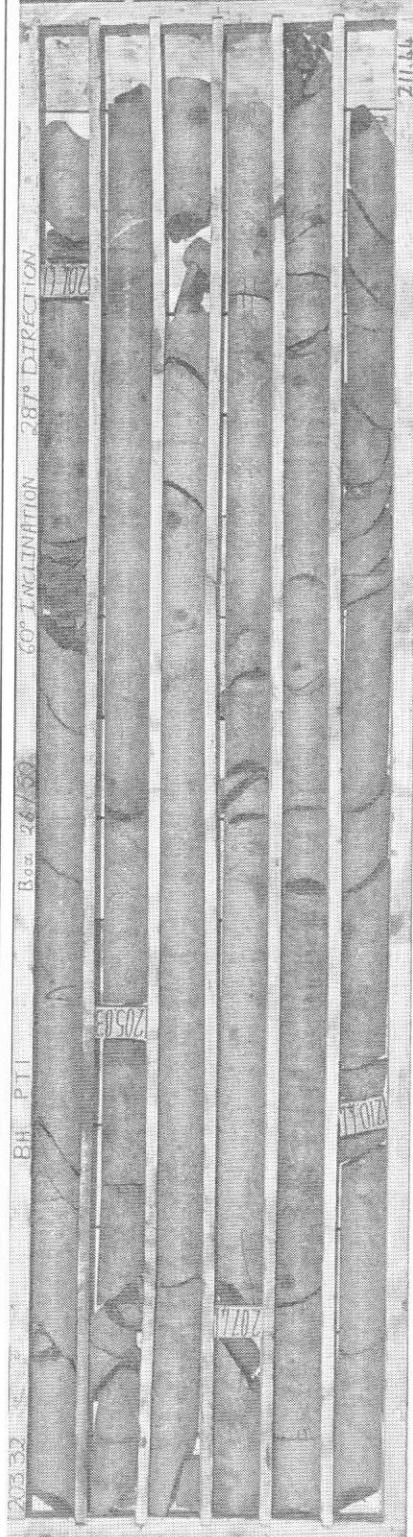
SUPPLEMENTARY FEASIBILITY STUDY GEOTECHNICAL INVESTIGATIONS

BOREHOLE: PT 01 INCLINED LENGTH: 400.61m DIP / DIRECTION: 60° / 287° Size: TNW 0.00m to 37.69m and NQ 37.69m to 400.61m

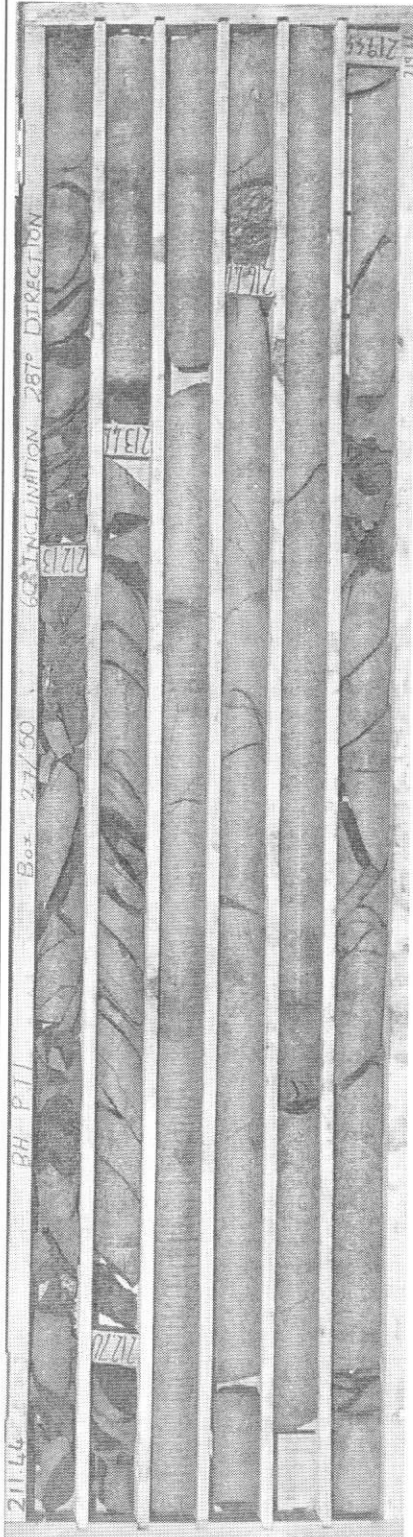
metres



Box 25 of 50  
193.92m to 203.32m



Box 26 of 50  
203.32m to 211.44m



Box 27 of 50  
211.44m to 219.44m

Borehole PT 01