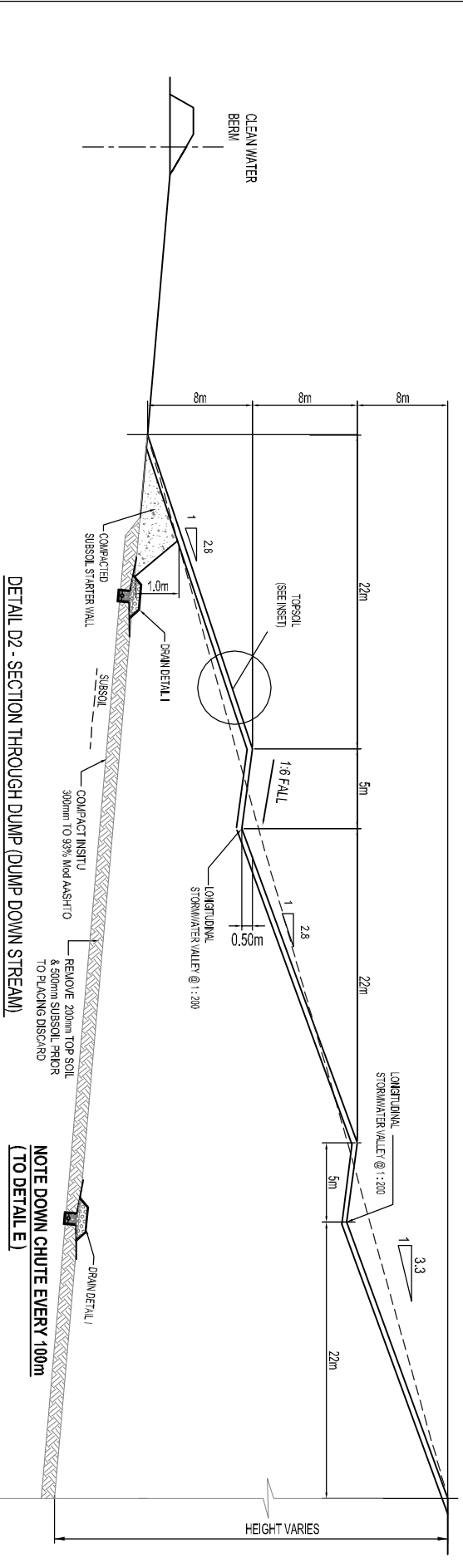


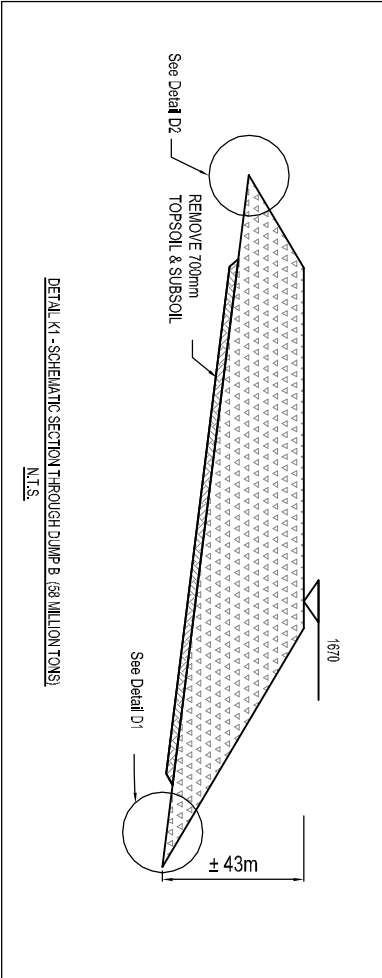
NOTE DOWN CHUTE EVERY 100m (TO DETAIL E)

DETAIL D1 - SECTION THROUGH DUMP (DUMP UPSTREAM)



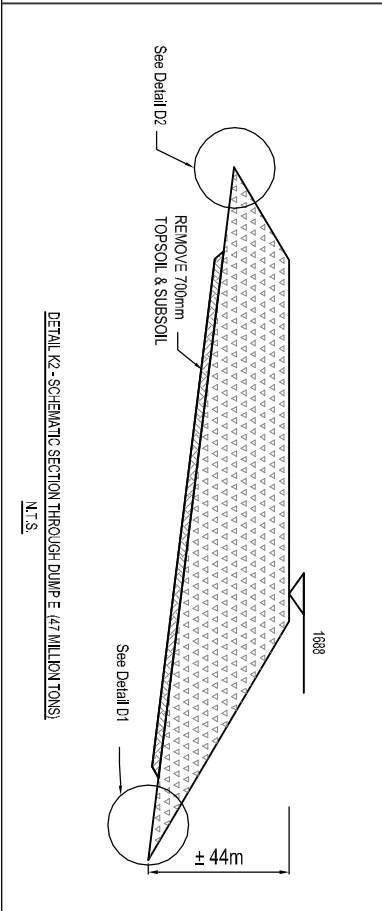
DETAIL D2 - SECTION THROUGH DUMP (DUMP DOWN STREAM)

NOTE DOWN CHUTE EVERY 100m (TO DETAIL E)



DETAIL K1 - SCHEMATIC SECTION THROUGH DUMP B (53 MILLION TONS)

N.T.S.



DETAIL K2 - SCHEMATIC SECTION THROUGH DUMP E (47 MILLION TONS)

N.T.S.

ISSUED FOR DISCUSSION PURPOSES ONLY

No.	Amendments	Rev.	Date
0	DRAWING CREATED		

ALAN ROBINSON P.Eng

ZARCO ENGINEERING
 12 Conifer P.O. Box 2961 Tsh. (01) 429-4288
 429 Klerksdorp rd NORTRICHTER Call: 0856-10-12-23
 2115 Administratief Fax: 085 894 857

Client: **ESKOM**

Project: **HENDRINA POWER STATION**

Discipline: **ASH DUMP TYPICAL DETAILS**

SCALE: **N.T.S.**

SHEET OF SHEETS

Drawing No: **618/013**

THE SOUTH AFRICAN BUREAU OF STANDARDS