

APPENDIX B
PUBLIC PARTICIPATION
Section 2: Background Information Documents (BIDs)



BACKGROUND INFORMATION DOCUMENT

HIGHVELD NORTH WEST AND LOWVELD NORTH STRENGTHENING PROJECT

May 2009

INTRODUCTION

Notice is hereby given in terms of Environmental Impact Assessment Regulation 56 published in Government Notice No. R. 385 in terms of the National Environmental Management Act, 1998 (Act No. 107 of 1998), as amended of the intention to carry out the following activities:

- The construction of a new Rockdale B substation and Associated Secondary Infrastructure in the vicinity of the existing Rockdale substation (DEAT ref: 12/12/20/1339);
- The construction of a new Marble Hall/ Wolwekraal substation (DEAT ref: 12/12/20/1343);
- The construction of a new 400kV Power Line that will connect the Rockdale B substation to the Marble Hall/Wolwekraal substation (DEAT ref: 12/12/20/1340);
- The construction of a new 400kV Power Line that will connect the Marble Hall/Wolwekraal substation to the Steelpoort substation (DEAT ref: 12/12/20/1341); and
- The construction of a new 400kV Power Line that will connect the Marble Hall/Wolwekraal substation to Mokopane substation (DEAT ref: 12/12/20/1343).

The existing transformers at the Rockdale substation are now old and pose a serious risk. They are unable to meet current maximum power demands, and this normally results in load shedding during maintenance. The construction of the **Rockdale B substation** will provide a new site where new loads can be connected. The substation would provide a power source for the 132 kV lines that need to be diverted from the Vulcan substation because of the unsuitable ground.

The construction of the **Marble Hall/Wolwekraal substation** will alleviate the low voltage problems experienced by the electricity distribution networks around the Marble Hall/Wolwekraal area and provide 400kV at Marble Hall. The new substation will remove excess load from the Simpson substation which is currently unable to meet its maximum power demands. The new substation will create a source for connecting new loads around the area. The substation will provide a point to connect the network to the Waterberg Generation network. The new substation will ensure that there is power for the Steelpoort Pumped Storage Scheme to pump water to the upper dam during pumping condition.

The **Rockdale B to Marble Hall power line** is required to connect the new Rockdale B substation to the Marble Hall/Wolwekraal substation.

The **Marble Hall to Steelpoort power line** will supply power to the Steelpoort Pumped Storage Scheme (PSS) to ensure that water is pumped to the upper dam during pumping condition. The Duvha Steelpoort substation, used to supply power to the Steelpoort PSS but that connection line has now been disconnected.

The **Marble Hall to Mokopane power line** will connect the Marble Hall/Wolwekraal substation to Polokwane electricity distribution network.



PROJECT DETAILS

Rockdale B substation and Associated Secondary Infrastructure (DEAT ref: 12/12/20/1339)

The scope of the work consists of the following:

- Loop-in of 400kV line from the Arnot/Vulcan substation into the new substation by 2011;
- Construction of the new substation not far from existing Rockdale substation installed with 2x500MVA 400/132kV transformers;
- Building of feeder bays at Rockdale B substation for integrating the distribution networks by 2011; and
- Upgrading of 9 breakers on the 132 kV busbars at the Rockdale substation so that their ratings are below 30kA to 40 kA in order to maximise the amount of current that can be safely carried by 2011.

Marble Hall/Wolwekraal substation and Associated Secondary Infrastructure (DEAT ref: 12/12/20/1343)

The scope of the work consists of the following:

- Construction of a new Marble Hall substation installed with 2x500MVA 400/132kV by 2012; and
- Building of 5x132kV feeder bays at the new Marble Hall substation for integrating the distribution networks by 2012.

400kV Power Line connecting the Rockdale B substation to the Marble Hall/Wolwekraal substation (DEAT ref: 12/12/20/1340)

The scope of the work consists of the following:

- Building an 80 km 400kV Power Line from Rockdale B to Marble Hall by 2012.

400kV Power Line connecting the Marble Hall/Wolwekraal substation to the Steelpoort substation (DEAT ref: 12/12/20/1341)

The scope of the work consists of the following:

- Building a 50 km 400kV Power Line from Marble Hall to Steelpoort by 2014.

400kV Power Line connecting the Marble Hall/ Wolwekraal substation to the Mokopane substation (DEAT ref: 12/12/20/1343)

The scope of the work consists of the following:

- Building a 90 km 400kV Power Line from Marble Hall to Mokopane by 2014.

PROJECT LOCATION

Rockdale B substation and Associated Secondary Infrastructure (DEAT ref: 12/12/20/1339)

The three locality alternatives are within the Mpumalanga Province, south of Middleburg. These alternatives are all located within Nkangala District Municipality and Steve Tshwete Local Municipality in ward 15. Sites A and B are located on farm Rietfontein 314 and site C is located on farm Klipfontein 316.

Marble Hall/Wolwekraal substation and Associated Secondary Infrastructure (DEAT ref: 12/12/20/1343)

The five locality alternatives are within the Limpopo Province. These alternatives are all located within Greater Sekhukhune District Municipality. Alternative sites 1 to 4 are located on farm Loskop Noord 12 JS (Portions 983/12; 190/12; 192/12 and 688/12) in Greater Marble Hall Local Municipality, Ward 5. Alternative site 5 is located on Farm Scherp Arable 743 KS portion 27/743 in Greater Marble Hall Local Municipality, Ward 6

400kV Power Line connecting the Rockdale B substation to the Marble Hall/Wolwekraal substation (DEAT ref: 12/12/20/1340)

The alternative power lines 1 and 2 are located between Middelburg and Marble Hall

400kV Power Line connecting the Marble Hall/Wolwekraal substation to the Steelpoort substation (DEAT ref: 12/12/20/1341)

The alternative power lines 1 and 2 are located between Marble Hall and Steelpoort

400kV Power Line connecting the Marble Hall/ Wolwekraal substation to the Mokopane substation (DEAT ref: 12/12/20/1343)

The alternative power lines 1, 2 and 3 are located between Marble Hall and Mokopane

A locality map has been included on the reverse of this page.



ENVIRONMENTAL AND SOCIAL CONSULTANTS

P.O. BOX 1673
SUNNINGHILL
2157

147 Bram Fischer Drive
Fernside/Fax: (011) 781 1731
2194

Phone: (011) 781 1730
Email: isatah@nemai.co.za

Reply Form:

Highveld North West Lowveld North Strengthening Project
(Complete and return to/voiboi en stuur aan: Isatah Sibanda by 17 June 2009)

Date/Datum			Official Use		
Name of organisation/ Naam van organisasie			Date received:		
Name of interested and Affected Party/ Naam van Belangstellende Party			Our reference:		
Address/ Adres	Postal/Pos:	Physical/ fisies:	Status		
Tel No					
Fax/Faks No					
Email/Epos					
Registration as an I&AP/ Registrasie as 'n Belangstellende Party	<table border="1"> <tr> <td>YES/JA</td> </tr> <tr> <td>NO/NEE</td> </tr> </table>		YES/JA	NO/NEE	
YES/JA					
NO/NEE					

Comments/Opmmerkings:



IMPACT ASSESSMENT

Nemai Consulting was appointed by Eskom to undertake the environmental impact assessment for the proposed construction of the substations and power lines. The process involves two phases, Scoping followed by EIA. The Scoping phase is currently underway.

A vital step during the environmental appraisal process is Public Participation, which aims to inform interested and Affected Parties (I&APs) about the proposed project, and provides them with an opportunity to raise concerns.

The following public meetings will be held to discuss the proposed development; details of the meeting are as follows:

Venue	Date	Time	Address
Zikuphule Primary School	01 June 2009	10h00 – 17h00	5049 Chocolate Street, Middelburg
Laerskool Elandsiaagie	02 June 2009	09h00 – 13h00	PK Seionsrivier Elandsiaagie
De Wagendrift Combined School	02 June 2009	15h00 – 18h00	De Wagendrift Groblersdal
Groblersdal Council Chambers	03 June 2009	10h00 – 17h00	2 nd Grobler Ave, Civic Center, Groblersdal
Greater Marble Hall Community Hall	04 June 2009	10h00-17h00	Ficus Street Greater Marble Hall
Skhosana Secondary School	05 June 2009	15h00 – 18h00	Stand No. 420 Sehlaikwana
Laerskool Bysonderheid	08 June 2009	09h00 – 13h00	Van Rooyvenweg, Roedtan
Sekutupu Primary School	08 June 2009	15h00 – 18h00	256 Mathibela, Groofhoek
Abootayob Hall	09 June 2009	10h00 -17h00	Cnr Boeke Hoek Street/ Karee Street, Mokopane

If you are unable to attend the meeting and would still like to voice your concerns, please complete the accompanying reply form and forward it to the contact person below. Please return the reply form overleaf by 17 June 2009, if you wish to register as an interested and Affected Party.

Further information regarding this project can be obtained from Nemai Consulting.

- **Name of Proponent** – Eskom Holdings Limited
- **Contact person/Environmental Assessment Practitioner**

Isaiah Sibanda
Nemai Consulting
PO Box 1673 Summinghill, 2157
Tel: (011) 781 1730

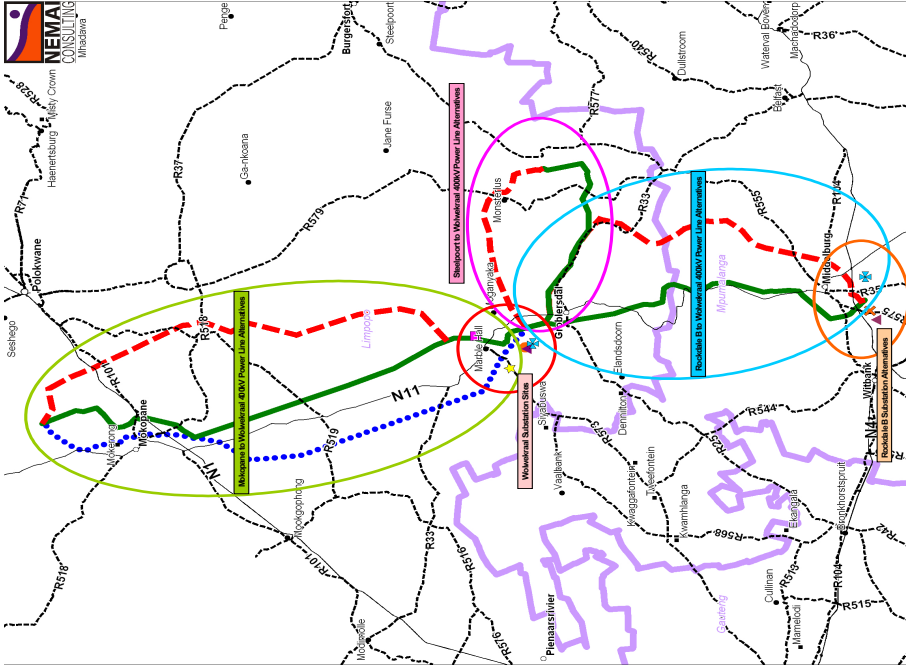
Fax: (011) 781 1731

Email: isatshs@nemai.co.za

Date of publication of notice – 08 May 2009

Any objections or comments to be proposed should be forwarded to the contact person by 17 June 2009. In order to ensure that you are identified as an interested and affected party, please submit your name, contact information and interest on the matter to the contact person above. Please inform the contact person if you would like correspondence to be forwarded to you.

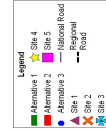
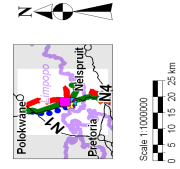
This assessment is being conducted on behalf of Eskom.



Project Name: Highveld North West Lowveld Strengthening Project

Map Name: Locality Map

Date: May 2009





LENGOLO – TSIBISO KA TABAKGOLO
HIGHVELD NORTH WEST AND LOWVELD NORTH
STRENGTHENING PROJECT

Motshheanong 2009

MATSENO

TSEBISO KA TSAMAIISO YA HO LEKOLA TSHUSUMETSO HO TIKOLOHO

- Tsebisano e etswa ho ya ka Molapo Wa Ho Lekola Tshusumetso Ho Tikoloho Wa 56 (Environmental Impact Assessment Regulation 56) o phatlaladitsweng Tsebisong ya Mmuso No. R. 385 ho ya ka Molapo wa Naha wa Tsalo ya Tikoloho wa 1998 (National Environmental Management Act, 1998) (Molao No. 107 wa 1998), jwalo ka ha ho entswe dikotiso ka maikemisetso a ho etsa mesebetsi e laelwang.

1. Kaho ya setseihene se setjha sa Rockdale B hammo ho le Marangrang a Tsamaisanang le Sona, hona moo ho nang le setseihene sa Rockdale
(DEAT ref: 12/12/20/1339)

- Tihaloso le boholo ba sebaka** – Difehla motlakase tse leng setseihening sa Rockdale di se di tsotsefale ebele di ka baka kotsi. Ha di igone ho jara ditlhoko tsa motlakase, mme sena se atisa ho baka ho tima ha motlakase ha ho lokiswa. Ho aha ha setseihene ho tla etsa hore ho be le setjha se setjha moo ho nang ho hokewa diphepele tse njha tsa motlakase ho sona. Setseihene se tla ba mohlodi wa motlakase bakeng sa ditlamo tsa 132 kV tse hlokanang ho kgeliswa ho tloha setseihening sa Vulcan hobane se se sebakang se sa tshehanelehang.

Sebaka – Dibaka tse tharo tseo ho ka ahwang ho tsona di Profenseng ya Mpumalanga, ka borwa ho Middleburg, kaofela ha tsona di fumaneha Masepaling sa Seterere wa Nkangala le Masepaling wa Lehae wa Steve Tshwete ho ward 15. Setjha A le B di polasing ya Reiffontein 314 ha Saisha C se le polasing ya Klipfontein 316.

2. Kaho ya setseihene se setjha sa Marble Hall/Wolvkraal le Marangrang a Tsamaisanang le Sona (DEAT ref:12/12/20/1343)

- Tihaloso le boholo ba sebaka** – Kaho ya setseihene sa Marble Hall/Wolvkraal e tla thusa mahlateng a ba teng phanong ya motlakase ho potoloha le sebaka sa Marble Hall/Wolvkraal le ho fana ka motlakase wa 400kV Marble Hall. Setseihene se setjha se tla tlosa kgatello e teng setseihening sa Simpon seo ha jwale se hlolehlang ho kgahlametsana le ditlhoko tsa motlakase.

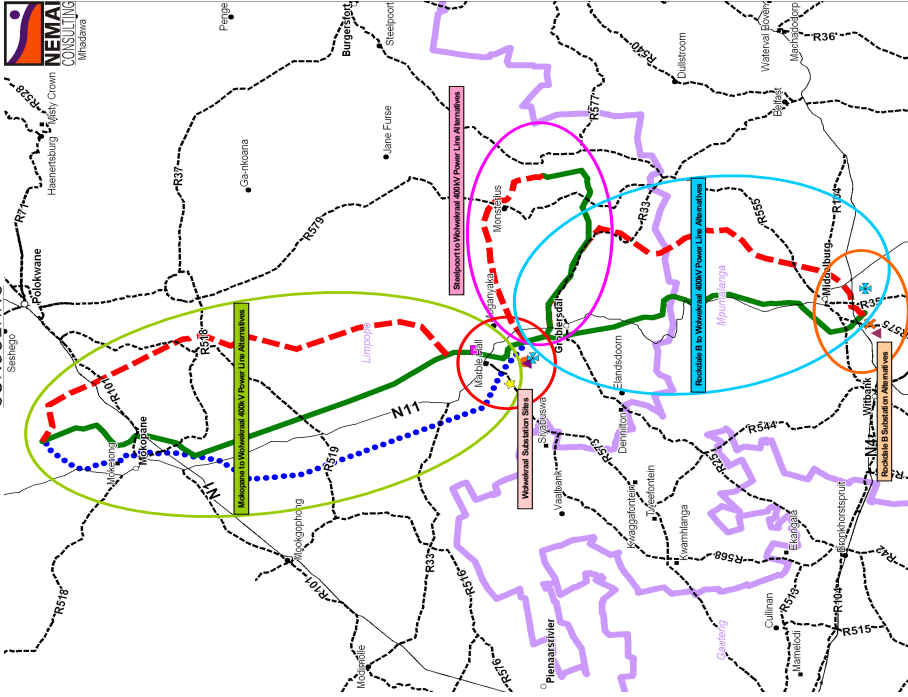
Setseihene se setjha se tla ba mohlodi wa ho hokela diphepele tse njha tsa motlakase ho potoloha le sebaka. Setseihene e tla ba sebaka moo ho nang ho hokelwa marangrang ho marangrang a Waterberg Generation. Setseihene se setjha se tla metlafatsa hore ho duta ho le ho ena le motlakase Steelport Pumped Storage Scheme ho nyolela metsi letamong le ka hodimo nakong ya ho fihlwa ha metsi.

Sebaka- Dibaka tse hano tseo ho nang ho aha ho tsona di Profenseng ya Limpopo. Dibaka tse na kaofela di fumaneha Masepaling e Moholo wa Seterere wa Sekhukhune. Setjha 1 ho ya ho 4 di polasing ya Loskop Noord 12 JS (Dikarolo 983/12;190/12;192/12 le 688/12) ho Masepala e Moholo wa Seterere wa Marble Hall, ho Ward 5. Setjha se ka sebediswang sa 5 se fumaneha Polasing ya Scherp Arable 743 KS karolo 277743 ho Masepala e Moholo wa Lehae wa Marble Hall ho Ward 6.

3. Ho tla etswa Thapo e njha ya Motlakase ya 400kV e tiang ho hokela setseihene sa Rockdale ho setseihene sa Marble Hall/Wolvkraal (DEAT ref: 12/12/20/1340)

- Tihaloso le boholo ba sebaka**- Ho hlokeha thapo ya motlakase Rockdale B ho ya Marble Hall, ho hokela setseihene se setjha sa Rockdale B ho sa Marble Hall/Wolvkraal.

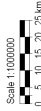
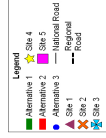
4. Ho tla etswa Thapo e njha ya Motlakase ya 400kV e tiang ho hokela setseihene sa Marble Hall /Wolvkraal ho sa Steelport (DEAT ref: 12/12/20/1341)



Project Name: Highveld North West Lowveld Strengthening Project

Map Name: Locality Map

Date: May 2009



- Tihaloso le boholo ba sebaka**- Thapo ya motlakase ho tloha Marble Hall ho ya Steelport e tla fepela motlakase Steelport Pumped Storage Scheme (PSS) ho metlafatsa hore metsi a nyolohela letamong le ka hodimo nakong eo ho fihlwang metsi. Setseihene sa Duvha Steelport se ne se fepela motlakase ho Steelport PSS, empa jwale phepele eo e ne e kgaelewe.

5. Ho tla etswa Thapo e njha ya Motlakase ya 400kV e tiang ho hokela setseihene sa Marble Hall/Wolvkraal ho setseihene sa Mokopane
(DEAT ref: 12/12/20/1343)

- Tihaloso le boholo ba sebaka**- Thapo ya motlakase ho tloha Marble Hall ho ya Mokopane e tla hokela setseihene sa Marble Hall/Wolvkraal ho marangrang a phepele ya motlakase a Polokwane.

Dikopo tsa ho etsa Tekolo ka Tshusumetso ho Tikoloho di le tsa etswa ke Lefapha la Tsa Tikoloho le Bohahaudi (DEAT) e le ho fumana tumello ka diprojeke tse hlalositsehang ka hodimo.

- Dikopano tsa Sejhaba** – Dikopano tse latelang tsa sejhaba di tla tshehanya ho buisana ka diprojeke tse hlalositsehang.

Sebaka	Letsatsi	Noko	Aterese
Zikuphule Primary School	01 June 2009	10h00 – 17h00	5049 Chocolate Street, Middelburg
Laerskool Elandsiaagte.	02 June 2009	09h00 – 13h00	PK Selonsriver Elandsiaagte
De Wagendrift Combined School	02 June 2009	15h00 – 18h00	De Wagendrift Groblersdal
Groblersdal Council Chambers	03 June 2009	10h00 – 17h00	2 nd Grobler Ave, Civic Center, Groblersdal
Greater Marble Hall Community Hall	04 June 2009	10h00-17h00	Ficus Street Greater Marble Hall
Skhosana Secondary School	05 June 2009	15h00 – 18h00	Stand No. 420 Sehlakwana
Laerskool Bysonderheid,	08 June 2009	09h00 – 13h00	Van Rooyvenweg, Roedtan
Sekutupu Primary School	08 June 2009	15h00 – 18h00	256 Mathibela, Groothoek
Abodtayob Hall	09 June 2009	10h00 - 17h00	Cnr Boeke Hoek Street/ Karee Street, Mokopane

Thahisoleseding e tomanyana maleba le projeke ena e ka fumaneha ho Nema Consulting.

- Lebitso la Motshetsetsi** – Eskom Holdings Limited

Molekodi wa Tikoloho

Isalah Sibanda
 Nema Consulting
 PO Box 1673
 Sunninghill, 2157
 Tel: (011) 781 1730
 Fax: (011) 781 1731
 Email: isalah@nemai.co.za

Letsatsi la phatlalatsa ya tsebisano 08 Motshheanong 2009

Kganyetso le ha e efe kapa mahlulo a ka hlalisingang a tshehanela ho romelwa ho molekodi wa tikoloho ka la 17 Phuplaine 2009. Ho etsa bonnete hore o hlalwa o le ya nang le thahasello le ho ameha, ka kopo romela lebitso la hao, dinomoro tsa founu le thahasello ya hao ntheng ena, o di romele ho molekodi wa Tikoloho. Ka kopo bolella molekodi wa Tikoloho ebang o rata ho ngollwa.

Tekolo ena e etswa lebitsong la Eskom.



INCWADI YOKUNIKEZA ULWAZI

HIGHVELD NORTH WEST AND LOWVELD NORTH STRENGTHENING PROJECT

Mayi 2009

Kukhishwa isaziso ngokuphathelene noMthetho wokuHloha uMhela kwimVelo 56 osichilewe kwizaziso zikaHalumeti No. R. 385 ngokubambisana noMthetho woNgamelo iMvelo kaZwelonke, ka-1998 (uMthetho No. 107 ka-1998), njengoba uchibeyile kwimhloso yokwenza le misebenzi elandelayo:

1. Ukwakhiwa kwesiteshi esincane sokuphepha ugesi esitha eRockdale B kanye nengqalasizinda yeSibithi Ehambisana Nase endaweni lapho isiteshi esincane sokuphepha amandla kagesi saseRockdale sikhona (Ireferense ye-DEAT: 12/12/20/1339)

Ukuchazwa kanye nezinga - Izinto zokugqoka ugesi ezikhona njengamanje esiteshini esincane sokuphepha ugesi saseRockdale ezindala futhi zezingadala ngozi. Azisakwazi ukumelana namaziga aphezulu okudingeka kukagesi, okuvamise ukuphepha ngokunqamuka kwamandla kagesi una kuseshenziswa kuso. Ukwakhiwa kwesiteshi sokuphepha ugesi esincane kuzomikeza indawo entsha lapho omunye ugesi uzuya khona. Isiteshi esincane sokuphepha ugesi sizolinxeka ngomthombo wamandla kagesi kumzila ongama-132kV okumele uphambukiswe esiteshini esincane sokuphepha ugesi saseVulcan ngoba asiyona indawo efanelekile.

Indawo - Ezinye izindawo ezintathu ezingasethenziswa ziseziFundazweni saseMumalanga, eNingizimu yeMiddelburg, Zonke lezi zindawo ezinye ezingasethenziswa zitholakala kuMasipala wesiFunda saseNkangala noMasipala iSteve Tshwete kowadi 15. Isiza A nesiza B zitholakala epulazini i-Rietfontein 314 bese isiza C zitholakala epulazini i-Klipfontein 316.

2. Ukwakhiwa kwesiteshi esincane sokuphepha ugesi esitha i-Marble Hall/Wolwekraal kanye nengqalasizinda yeSibithi Ehambisana Nase (Ireferense ye-DEAT: 12/12/20/1343)

Ukuchazwa kanye nezinga - Ukwakhiwa kwesiteshi esincane sokuphepha ugesi i-Marble Hall/Wolwekraal kuzogqoka inkinga yamandla kagesi aphansi eyenzeka kuhlaka lokubalalisa ugesi ezisidize kwandawo yaseMarble Hall/Wolwekraal bese kuhlinzeka ugesi ongama-400kV eMarble Hall. Isiteshi esincane sokuphepha ugesi esitha sizosusa umthwalo oweqile kwisiteshi esincane sokuphepha ugesi saseSimpson esigqokwazi okwamanje ukumelana namaziga aphezulu okudingeka kukagesi. Isiteshi esincane sokuphepha ugesi esitha sizokwakhona umthwalo wokuxhumana omunye ugesi eutize nate ndawo. Isiteshi esincane sokuphepha ugesi sizobha indawo yokuxhumana uhleka kuhlaka lwe-Waterberg Generation. Isiteshi esincane sokuphepha ugesi sitha sizokwakhona ugesi esitha esingatheni sokuthi smika amandla kagesi i-Steelport Pumped Storage Scheme ukuze simponpe amanzi aye edamini elingenhla ngesikhathi sezimo zokumpoma.

Indawo - Ezinye izindawo ezintathu ezingasethenziswa zitholakala kwisiF impopo. Lezi ezinye izindawo ezingasethenziswa zitholakala kuMasipala wesiFunda saseSokhukhune Namaphethelo. Ezinye iziza ezingasethenziswa eso-1 ukuya kwesiza-4 zitholakala epulazini i-Loskop Noord 12 JS (Izingenye 983/12; 1901/2; 1971/2 kanye no-688/12) kuMasipala waseMarble Hall Namaphethelo, kuWadi 5. Ezinye iziza ezingasethenziswa zitholakala epulazini i-Schep Arabie 743 KS ingxenye 27/743 kuMasipala waseMarble Hall Namaphethelo kuWadi 6.

3. Ukwakhiwa koMzila waMandla kaGesini omusha ongama-400kV ozoxhuma isiteshi esincane sokuphepha ugesi iRockdale B kanye nesiteshi esincane sokuphepha ugesi iMarble Hall/Wolwekraal (Ireferense ye-DEAT: 12/12/20/1340)

Ukuchazwa kanye nezinga - Umzila wamandla kagesi osuka eRockdale B oya eMarble Hall uyadingeka ukuxhuma isiteshi esincane sokuphepha ugesi iRockdale B kanye nesiteshi esincane sokuphepha ugesi iMarble Hall/Wolwekraal.

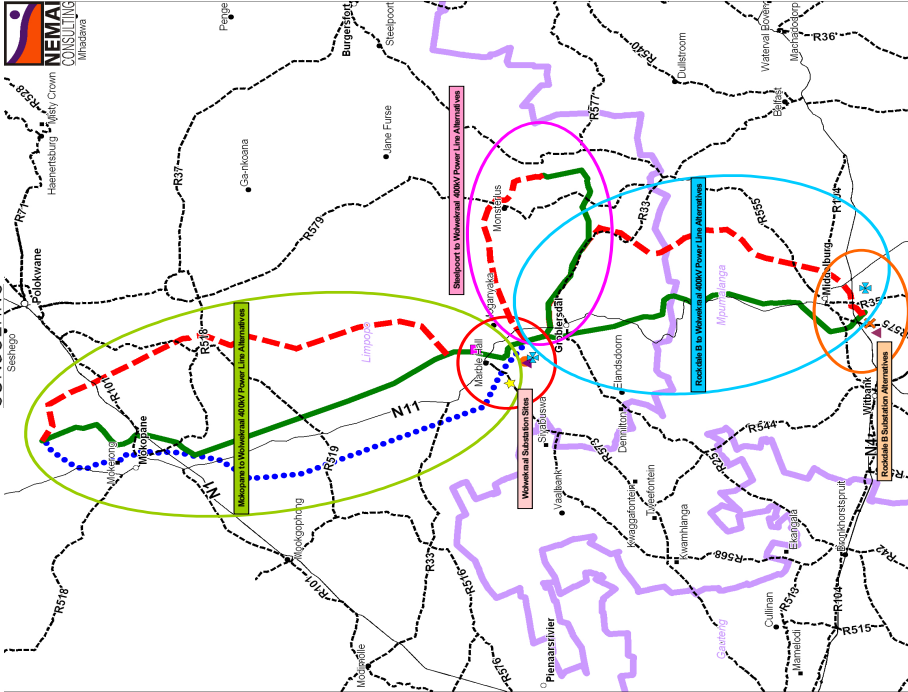
4. Ukwakhiwa koMzila waMandla kaGesini omusha ongama-400kV ozoxhuma isiteshi esincane sokuphepha ugesi iMarble Hall/Wolwekraal nesiteshi esincane sokuphepha ugesi saseSteelport (Ireferense ye-DEAT: 12/12/20/1341)

Ukuchazwa kanye nezinga - Umzila wamandla kagesi osuka eMarble Hall oya eSteelport uzonika amandla kagesi kwi-Steelport Pumped Storage Scheme (PSS) ukunika isinqiso sokuthi amanzi amponipheva edamini elingenhla ngesikhathi sezimo zokumpoma. Isiteshi esincane sokuphepha ugesi i-Duvha Steelport sasimika amandla kagesi kwiSteelport PSS kodwa manje lowo mzila sewuqanyulwe.

5. Ukwakhiwa koMzila waMandla kaGesini omusha ongama-400kV ozoxhuma isiteshi esincane sokuphepha ugesi saseMarble Hall/Wolwekraal nesiteshi esincane sokuphepha ugesi saseMokopane (Ireferense ye-DEAT: 12/12/20/1343)

Ukuchazwa kanye nezinga - Umzila wamandla kagesi osuka eMarble Hall oya eMokopane ukuxhuma isiteshi esincane sokuphepha ugesi saseMarble Hall/Wolwekraal nohloka lokubalalisa ugesi lwasePolokwane.

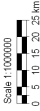
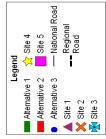
Isicelo sokwenza ukuthola safakwa kuMnyango wezeMvelo nezokuVakasha (DEAT) ukuze kutholakale imvume yokwenza amaphrojekthi abalwe ngenhla.



Project Name: Highveld North West Lowveld Strengthening Project

Map Name: Locality Map

Date: May 2009



Inthlangano Yomphakathi - Lemihlangano yomphakathi elandelayo izobanjwa ukuze kudingiwe ngamaphrojekthi abalwozwayo.

Indawo	Usuku	Isikhathi	Ikeli
Zikuphale Primary School	01 June 2009	10h00 - 17h00	5049 Chocolate Street, Middelburg
Laerskool Elandslaagte.	02 June 2009	09h00 - 13h00	PK Selonsriver Elandslaagte
De Wagendrift Combined School	02 June 2009	15h00 - 18h00	De Wagendrift Groblersdal
Groblersdal Council Chambers	03 June 2009	10h00 - 17h00	2nd Grobler Ave, Civic Center, Groblersdal
Greater Marble Hall Community Hall	04 June 2009	10h00-17h00	Ficus Street Greater Marble Hall
Sibosana Secondary School	05 June 2009	15h00 - 18h00	Stand No. 420 Sehlakwana
Laerskool Bysonderheid,	08 June 2009	09h00 - 13h00	Van Rooyvenweg, Roodtan
Sekutupu Primary School	08 June 2009	15h00 - 18h00	256 Mathibela, Groothoek
Abooyayob Hall	09 June 2009	10h00 - 17h00	Cnr Boeke Hoek Street/ Karee Street, Mokopane

Uma ufuna ukuthola olunye ulwazi ngokuphathelene nale phrojekthi ungluthola kwa-Nemai Consulting.

Igama lenkampani eneMvume - U-Eskom Holdings Limited Umuntu okukhanyanwa naye/I-Environmental Assessment Practitioner

Nemai Consulting

PO Box 1673

Suminghill, 2157

Ucingo: (011) 781 1730

I-Faks: (011) 781 1731

I-Email: isaahs@nemai.co.za

Usuku lokukhishwa kwesaziso - 08 Meyi ka-2009

Uma kukhona ongalambisani nakho noma ofisa ukukuphakamisa unglutholisa kokukhanyanwa naye ongekaduli umhla ziyi-17 kuluni ka-2009. Ukuze wenze isinqiso sokuthi wazwa njengomuntu nentshisekelo noma odhantsike, sicela ubhalise igama lakho, imimigwane yendlela ongalabantwa ngayo kanye nentshisekelo yakho kulolu daba kumuntu okukhanyanwa naye ongenhla. Sicela ushelele umuntu okukhanyanwa naye ukuthi ungalabantwa yini ukubhaliswa izancewadi.

Lokhu kubhala kwenzelwa abakwa-Eskom.