

Environmental Impact Assessments

765kV Eskom Transmission Power Lines



Zeus Substation to Perseus Substation
Zeus Substation to Mercury Substation



Background Information Document

The aim of this document

This document provides you with an overview of the various aspects of the environmental studies.

The document reflects the current understanding of the project and the study area.

This information should provide you with sufficient information to participate in this study:

- ▶ An overview of the proposed projects planned by Eskom Transmission;
- ▶ A description of the key activities which form part of the environmental impact assessments;
- ▶ A description of the potential impacts associated with the construction & operation of Transmission lines;
- ▶ A map of the study area showing the various route corridors for the transmission lines.

Sepheo sa tokomane ena

Tokomane ena e ho neha kakaretso ya dintlha tse fapaneng tsa diphuputso tsa tikoloho.

Tokomane ena e bontsha kutlwisiso ya ha jwale ya projeke mmoho le sebaka se fuputswang.

Tlhalisoleseding ena e lokela ho o neha lesedi le lekaneng bakeng sa ho ba le seabo diphuputsong tse:

- Kakaretso ya diprojeke tse sisingwang tse rerilweng ke Eskom *Transmission*;
- Tlhaloso ya mesebetsi ya bohlokwa e bopang karolo sephetho sa tekolo ya tikoloho;
- Tlhaloso ya diphetho tse ka bang teng tse amanang le kaho le tshebediso ya mela ya *Transmission*;
- Mmapa wa sebaka se fuputswang, mme o bontsha metjha e fapaneng e tla latelwa bakeng sa mela ya *transmission*.

Inhloso yalo mbhalo

Lo mbhalo ukunikeza incazelo jikelele yezingxeny ezechukene zezingcwaningo zemvelo.

Umbhalo ubonisa ukuqonda kwamanje kweprojekthi kanye nendawo yocwaningo

Lolu lwazi kumele lukunikeze ulwazi olwanele lokuthi ubambe iqhaza kulolu cwaningo:

- ▶ Incazelojikele yamaprojekthi aphakanyisiwe ahlelwe yi-Transmission ye-Eskom;
- ▶ Incazelo yemisebenzi esemqoka eyakha ingxeny yokuhlola kwamandla emvelo;
- ▶ Incazelo yamandla angabakhona ahambisana nokwakha kanye nokusetshenziswa Kwamalayini e-Transmission;
- ▶ Ibalazwe lendawo yocwaningo elibonisa amaphasiji ahlukene amalayini e-transmission.

Die doel van hierdie dokument

Hierdie dokument bied u 'n oorsig van die verskillende aspekte van die omgewingstudies.

Die dokument weerspieël die huidige interpretasie van die projek en die studiegebied.

Hierdie inligting behoort u van genoeg inligting voorsien om aan hierdie studie deel te neem:

- ▶ 'n Oorsig van die voorgename projekte wat deur Eskom Transmissie beplan word;
- ▶ 'n Beskrywing van die sleutelaktiwiteite wat deel uitmaak van die omgewingsimpakstudies;
- ▶ 'n Beskrywing van die moontlike impak wat met die konstruksie en bedryf van Transmissielinye vereenselwig word;
- ▶ 'n Kaart van die studiegebied wat die verskillende

INTRODUCTION TO THE STUDY

Most of the power supply to the greater Cape area is provided by the coal fired power stations on the Highveld, mainly in Mpumalanga. As a result, a 'backbone' Transmission network from Mpumalanga to the Cape has grown over the years as demand has increased. Much of this network is now over two decades old and is approaching its peak operational capacity. In addition to the natural growth for electricity demand in the Eastern Cape, a 'step load' (ie a rapid jump in electricity demand) is anticipated by May 2009 for the planned aluminium smelter in the Coega Industrial Development Zone (IDZ) near Port Elizabeth. The second step load is expected by May 2012.

Coega is part of the Southern Grid that consists of the Eastern Cape network system. Port Elizabeth and East London are the main demand centres. Measures to strengthen the existing network are underway and will help maintain a reliable supply for the next two years. However, additional 765kV Transmission Power Lines are still required between Mpumalanga and Port Elizabeth, and critical sections of the existing network will need these lines to be operational by the end of 2008. A second line is also anticipated over critical sections to meet longer-term demands. The first of these critical sections is between Standerton and Bloemfontein.

This study

The study area is shown on the attached map. The Substations of Alpha and Zeus are near Standerton, while the Beta and Perseus Substations are outside Dealesville, northeast of Bloemfontein. Alpha and Beta are 765kV Substations but their capacities are fully utilised and it is proposed to use Zeus and Perseus for the new 765kV network. **Two** new lines are required in this area and one will need to be operational by the end of 2008 to meet the demands at Coega. The other is expected within the next 10 years or so. Two options exist;

- **Zeus-Perseus.** A direct line between Zeus and Perseus Substations, approximately 430km long. The provinces of Mpumalanga and the Free State are involved, and possibly Gauteng if the line deviates north of the Vaal dam.
- **Zeus-Mercury-Perseus.** This will utilise the new Mercury-Perseus line (though it will need upgrading to 765kV before construction), and therefore only the **Zeus-Mercury** option will be covered in this study. The line will be approximately 250km long and will include the provinces of Mpumalanga, Free State, Gauteng and North West. In addition to providing additional network capacity to the Eastern Cape, this option would also provide important links for future expansion of the network to the north and west.

These are separate projects and both are being addressed in this EIA study

ISINGENISO SOCWANINGO

Izindawo eziningi zokunikeza amandla kagesi endaweni yase-Kapa ngobukhulu bazo zinikezwa yiziteshi ezinikezwa amandla ngamalahle e-Highveld, ikakhulukazi e-Mpumalanga. Ngaloko umphumela, yi- 'backbone' yomphambo we-Transmission osuka e-Mpumalanga uya e-Kapa osukhulile ngokuhamba kweminyaka njengoba izimfuno zikhuphukile. Okuningi kwalo mphambo manje kungaphezu kweminyaka eyishumi elikabili ubudala futhi isisondelela ubukhulu bokusebenza ezingeni elisesiqongweni. Ukwengeza ekukhuleni kwemvelo kwemfuneko kagesi eMpumalanga Kapa kucatshangelwa i-'step load' (okusho ukuthi ukugxuma ngokushesha kwemfuneko kagesi) ngo-Meyi ka-2009 yokuncibilikiswa kwensimbi ku-Coega Industrial Development Zone (IDZ) eduzane ne-Port Elizabeth. Umthwalo wesinyathelo sesibili ulindeleke ngo-Meyi ka-2012.

I-Coega yingxenywe ye-Southern Grid equkethe uhlelo lomphambo lwaseMpumalanga Kapa. I-Port Elizabeth kanye ne-East London yizikhungo ezinezimfuneko ezisemqoka. Amacebo okuqinisa umphambo osukhona ahleliwe futhi azosiza ukugcina ukunikezela okuthembekile eminyakeni emibili ezayo. Kodwa, Amalayini Amandla e-Transmission ye-765kV asadingeka ngaphakathi kwe-Mpumalanga ne-Port Elizabeth, futhi izigaba ezibucayi zomphambo okhona zizodinga lamalayini ukuthi abe esebenza ekupheleni kuka-2008. Ilayini yesibili nayo ilindelwe kuzigaba ezisemqoka ukuze ifinyelele izimfuneko zesikhathi eside. Eyokuqala yalezi zigaba ezisemqoka iphakathi kwe-Standerton ne-Bloemfontein.

Lolu cwanningo

Indawo yocwanningo iboniswe ebalazweni elijotshelwe. Iziteshi Ezincanyana ze-Alpha ne- Zeus ziseduzane ne-Standerton, bese kuthi Iziteshi Ezincanyana i-Beta ne-Perseus zibe ngaphandle kwe-Dealesville, enyakatho mpumalanga kwe-Bloemfontein. I-Alpha ne-Beta Yiziteshi Ezincanyana ze- 765kV kodwa ubukhulu bazo busetshenziswa ngokuphelele futhi kuphakanyiswe ukuthi kusetshenziswe i-Zeus ne-Perseus kumphambo omusha we-765kV. Amalayini **amabili** amasha adingekayo kule ndawo futhi eyodwa kuzodingeka ukuthi isebenze ekupheleni kuka-2008 ukuze kufinyelele izidingo ze-Coega. Enye ilindeleke eminyakeni eyi-10 ezayo noma ngokulindelekile. Kukhona ukukhetha okubili;

- **I-Zeus-Perseus.** Ulayini oqondile ngaphakathi Kweziteshi Ezincanyana ze-Zeus ne-Perseus, Ocishe ube ngama-430km ubude. Zifunda zase-Mpumalanga kanye ne-Vreyistati ziyabandakanyeka, kanye futhi ne-Gauteng uma ilayini ichezuka enyakatho yedamu i-Vaal.
- **I-Zeus-Mercury-Perseus.** Loku kuzosebenzisa ulayini omusha we-Mercury-Perseus (noma uzodinga ukulungiswa ube yi-765kV ngaphambi kokwakhiwa), ngakhoke wukhetho lwe-**Zeus-Mercury** kuphela oluzobhekwa kulo cwanningo. Umugqa uzawuba cishe ngama-250km ubude futhi uzofaka izifunda zase-Mpumalanga, eVreyistati, e-Gauteng kanye NaseNyakatho Ntshonalanga. Ngaphezu kokunikeza ubukhulu bomphambo eMpumalanga Kapa, lolu khetho luzonikeza futhi ukuxhumana okusemqoka kokwandiswa komphambo esikhathini esizayo eNyakatho Ntshonalanga.

SELELEKELA KA DIPHUPUTSO TSENA

Bongata ba phepelo ya rona ya matla ho ya dibakeng tse ngata tsa Kapa bo tswa diteisheneng tsa matla tsa mashala tse Highveld, haholoholo tse mane Mpumalanga. Ka baka leo, 'tshiya' ya marangrang a *Transmission* e tswang Mpumalanga ho ya Kapa e eketsehile haholo dilemong tse fetileng jwalo ka tseko ya yona le yona e ne e ntse e eketseha. Boholo ba marangrang ana jwale bo se bo le ka hodimo ho dilemo tse mashome a mabedi boholo mme di lebile bokgoning ba ona ba ho sebetsa le ho feta pele. Ka hodima kgolo ya tlhaho ya tseko ya motlakase mane Kapa Botjhabela, hoo ho thweng ke '*step load*' (ke hore, ho eketseha ho hoholo ha tseko ya motlakase) ho lebelletswe ho ba teng ha re ya kgwedding ya Motsheanong 2009 bakeng sa ho qhibidhiswa ha alaminiamo mane Coega Industrial Development Zone (IDZ) haufi le Port Elizabeth. *Step load* sa bobedi se lebelletswe ho ba teng ka Motsheanong 2012.

Coega ke karolo ya Southern Grid e bopilweng ka mokgwatshebetso wa marangrang a Kapa Botjhabela. Port Elizabeth le East London ke tsona ditsi tse ka sehloohong tse etsang ditseko. Ho ntse ho nkuwa mehato ya ho matlafatsa marangrang a leng teng mme hona ho tla thusa ho boloka phepelo e tshaphalang bakeng sa dilemo tse pedi tse tlang. Le ha ho le jwalo, Mela e meng ya Transmishene ya Matla ya 765kV e ntse e hlokeha pakeng tsa Mpumalanga le Port Elizabeth, mme dikarolo tsa bohlokwa tsa marangrang a ntseng a le teng di tla hloka mela ena hore di sebetse ho ya mafelong a 2008. Mola wa bobedi le ona o ntse o lebelletswe dikarolong tsa bohlokwa hore o tle o fihlele ditseko tsa nako e telele. The first of these critical sections is between Standerton and Bloemfontein.

Diphuputso tsena

Sebaka sa diphuputso se bontshwa mmapeng o hoketsweng mona. Di-*substation* tsa Alpha le Zeus di haufi le Standerton, ha di-*substation* tsa Beta le Perseus tsona di le ka ntle ho Dealesville, leboya-botjhabela ho Bloemfontein. Alpha le Beta ke di-*substation* tsa 765kV empa bokgoni ba tsona bo sebediswa ka botlalo athe hape ho sisingwa hore ho sebediswe Zeus le Perseus bakeng sa marangrang a matjha a 765kV. Ho hlokeha mela e metjha e mebedi sebakeng sena me o le mong o tla tshwanela ho sebetsa ho ya mafelong a 2008 bakeng sa ho fihlela ditlhoko tsa Coega. O mong o lebelletswe hore o tla sebetsa dilemong tse 10 tse tlang kapa ka hodimo ho moo. Ho na le kgetho tse pedi tse latelang;

- **Zeus-Perseus.** Mola o tibileng pakeng tsa di-*substation* tsa Zeus le Perseus, mme o ka ba botelele ba 430km. Diprovinsie tsa Mpumalanga le Foreistata ke tsona tse amehang, mohlomong le Gauteng ha mola o ka fapoha ka leboya ho Vaal dam.
- **Zeus-Mercury-Perseus.** Tsena di tla sebedisa mola o motjha wa Mercury-Perseus (le ha o tla hloka hore o ntlafatswe ho ya ho 765kV pele), ka hoo ke kgetho ya **Zeus-Mercury** feela eo ho tla shejanwa le yona diphuputso tse. Mola o tla ba bolelele bo ka etsang 250km mme o tla kenyelletsa diprovinsie tsa Mpumalanga, Foreistata, Gauteng le Leboya-Bophirima. Hodima ho fana ka bokgoni bo bong ka hodimo ba marangrang ho Kapa Botjhabela, kgetho ena hape e tla fana ka dikamano tsa bohlokwa bakeng sa katoloso ya nako e tlang ka leboya le ka bophirima.

Tsena ke diprojeke tse arohaneng, mme ho tsepamisitswe maikutlo ho tsona ka bobedi diphuputso tse tsa EIA

INLEIDING TOT DIE STUDIE

Die meeste van die kragtoevoer na die groter Kaap-gebied word deur steenkoolkragstasies op die Hoëveld, hoofsaaklik in Mpumalanga, voorsien. Gevolglik het 'n rugsteun-Transmissienetwerk vanaf Mpumalanga na die Kaap oor die jare gegroei soos die vraag verhoog het. Groot dele van dié netwerk is nou meer as twee dekades oud en nader die piek van sy bedryfskapasiteit. Benewens die natuurlike groei in die vraag na elektrisiteit in die Oos-Kaap, word 'n 'traplading' (di 'n skielike sprong in die vraag na elektrisiteit) teen Mei 2009 verwag vir die voorgenome aluminiumgieterij in die Koega Nywerheidsontwikkelingsgebied (NOG) naby Port Elizabeth. Die tweede traplading word teen Mei 2012 verwag.

Koega is deel van die Suidelike Netwerk wat uit die Oos-Kaap-netwerkstelsel bestaan. Port Elizabeth en Oos-Londen is die belangrikste vraagsentrums. Maatreëls om die bestaande netwerk te versterk is aan die gang en sal help om 'n ononderbroke toevoer vir die volgende twee jaar te handhaaf. Bykomende 765kV-Transmissiekraglyne word egter steeds tussen Mpumalanga en Port Elizabeth benodig, en noodsaaklike gedeeltes van die bestaande netwerk vereis dat hierdie lyne teen die einde van 2008 in werking is. 'n Tweede lyn word vir die noodsaaklike gedeeltes in die vooruitsig gestel om aan vraag op die langer termyn te voldoen. Die eerste van hierdie noodsaaklike gedeeltes is tussen Standerton en Bloemfontein.

Hierdie studie

Die studiegebied word op die aangehegte kaart aangedui. Die Substasies van Alpha en Zeus is naby Standerton, terwyl die Beta- en Perseus-Substasies buite Dealesville, noord-oos van Bloemfontein, is. Alpha en Beta is 765kV-Substasies maar hul kapasiteit word ten volle benut en die voorstel is om Zeus en Perseus vir die nuwe 765kV-netwerk te gebruik. **Twee** nuwe lyne word in hierdie gebied benodig en een sal teen die einde van 2008 in werking moet wees om aan Koega se vereistes te voldoen. Die ander een word binne die volgende 10 jaar of wat verwag. Daar is twee opsies:

- **Zeus-Perseus.** 'n Direkte lyn tussen Zeus- en Perseus-Substasies, ongeveer 430km lank. Die provinsies van Mpumalanga en die Vrystaat is betrokke, en moontlik Gauteng indien die lyn noord van die Vaaldam afwyk.
- **Zeus-Mercury-Perseus.** Dit sal die nuwe Mercury-Perseus-lyn benut (hoewel dit voor konstruksie na 765kV opgradeer sal moet word), en gevolglik sal net die **Zeus-Mercury**-opsie in hierdie studie gedek word. Die lyn sal ongeveer 250km lank wees en sal die provinsies van Mpumalanga, Vrystaat, Gauteng en Noordwes insluit. Benewens die voorsiening van bykomende netwerkkapasiteit vir die Oos-Kaap, sal hierdie opsie ook belangrike skakels verskaf vir toekomstige uitbreiding van die netwerk na die noorde en weste.

The Environmental Impact Assessment Process

Services to conduct the Environmental Impact Assessments (EIA) for both route options. In addition to the formal applications and consultation with the environmental authorities at National and Provincial the EIA process consists of three main phases:

➤ Scoping Phase

- The consultant “scopes” the various route corridors to gain a better understanding of the potential impacts. Additional corridors may be identified in the study area.
- The public is invited to raise issues and concerns relating to the route corridors;
- The information is integrated and a Draft Scoping Report is prepared and released for public comment. Preferred corridors may be identified.

➤ Environmental Assessment phase

- The preferred corridors are investigated in more detail. Potential impacts are assessed.
- A Draft Environmental Impact Report (Draft EIR) is prepared and released for public comment.
- All comments are incorporated into the final report that is submitted to the National and Provincial authorities for review.

➤ Record of Decision (ROD)

A ROD is issued by the National Department of Environmental Affairs & Tourism. All registered stakeholders are informed. The public is given 30 days to appeal the ROD in writing if they are in disagreement with the findings.

Note that both projects will follow the same process and will be run together.

Specialist Studies

Various specialist studies will be conducted as part of the EIAs. These studies include:

- ◆ Heritage ◆ Birds ◆ Ecology
- ◆ Social ◆ Visual

The names of the specialists can be obtained from the Public Involvement Office. Contact details provided on page 8.

Inqubo Yokuhlola Kwamandla Emvelo

Izinsiza zokwenza Ukuhlolwa Kwamandla Emvelo (i-EIA) ukhetho lwazo zombili izindlela. Ukwengeza ekufakeni izicelo nokuxhumana okusemthethweni neziphathimandla zemvelo kuZwelonke kanye nasezifundeni. Inqubo ye-EIA iqukethe amazanga amathathu asemqoka alandelayo:

➤

Izinga Lendawo Yokwenza

- Ikhonsalithenti “yenza indawo” okungamanye amaphasiji ayizinhlobo zezindlela ukuze ithole ukuqonda kangcono ukungabakhona kwamandla. Amaphasiji angeziwe angaboniswa endaweni yocwaningo.
- Umphakathi uyamenywa ukuba uzokwethula izindaba nemibuzo ngokuphathelene namaphasiji endlela;
- Ulwazi luyahlanganiswa bese kulungiswa kuphinde kukhishwe Umbiko Owuhlaka Wendawo Yokwenza ukuze umphakathi uphawule ngawo. Amaphasiji akhethiwe angaboniswa.

➤

Izinga Lokuhlola Imvelo

- Amaphisiji ayindlela akhethiwe ayaphenywa ngokugcwele. Amandla okuthelela ayahlolwa.
- Umbiko Owuhlaka Wamandla Emvelo (Uhlaka lwe-EIR) uyalungiswa bese uyakhishwa ukuze umphakathi unikeze imibono.
- Yonke imibono ifakwa embikweni wokugcina onikezwa iziphathimandla zikaZwelonke nezesifunda ukuthi ziwubuyekeze.

➤

Ukurekhodwa kwezinqumo (i-ROD)

I-ROD inikezwa Ngumnyango Wezindaba Zemvelo NezokuVakasha. Bonke abahlanganyeli abarejistiwe bayaziswa. Umphakathi unikezwa izinsuku eziyi-30 ukufaka isikhalo esibhaliwe nge-ROD uma bengavumelani nemiphumela.

Qaphela ukuthi womabili amaprojekthi azolandela inqubo efanayo futhi azohanjiswa ngesikhathi esisodwa.

Ucwaningo Lwezingcweti

Izingcwaningo Ezahlukile zezingcweti zizokwenziwa njengengxenye yama-EIA. Le zingcwaningo zifaka:

- ◆ Amagugu Esizwe ◆ Izinyoni ◆ I-Ikholoji
- ◆ Ezenhlalohlale ◆ Ezibonwayo

Amagama ezingcweti angatholwa Ehhovisi Lokuzibandakanya Lomphakathi. Imininingwane yokuxhumana inikezwe ekhasini lesi-8.

Tshebetso ya Tekolo ya Sephetho se bang Tikolohong

Ditshetheletso tsa ho tsamaisa Tekolo ya Sephetho se etsahalang Tikolong e leng *Environmental Impact Assessments (EIA)* bakeng sa kgetho tse pedi tse sebedisang ka tlwaelo. Hodima tshebetso tse tlwaelehileng le ditherisano le bolaodi ba tikoloho maemong a Naha le a Provinse, tshebetso ya EIA e na le mekgahlelo e meraro ya bohlokwa:

- Mokgahlelo wa *Scoping* (Sebaka sa ho Etsa Ntho)
 - Khonsalente etsa “*scope*” dikhoridong tse ngata tse fapaneng tse tlwaelehileng ho fumana kutlwisiso e ntlafetseng ya diphetho tse ka bang teng. Ho ka hlwauwa dikhorido tse ding hape sebakeng sa diphuputso.
 - Setjaba se a mengwa ho hlahisa ditaba le matshwenyeho a amanang le dikhorido tse tlwaelehileng tse latelwang;
 - Tlhalisoleseding e ya kopangwa e be ho hlahiswa Moralo wa Pehelo ya *Scoping* (Draft Scoping Report) hore setjhaba se fane ka ditshwaelo tsa sona. Ho ka hlwauwa dikhorido tse ratwang haholo.
- Mokgahlelo wa Tekolo ya Tikoloho
 - Ho fuputswa haholwanyane ka dikhorido tse ratwang haholo. Ho lekolwe diphetho tse ka bang teng.
 - Ho lokiswa Moralo wa Pehelo ya Sephetho se ka bang Tikolohong (Draft EIR) e be o a ntshuwa hore ho fumanwe ditshwaelo tsa batho.
 - Ditshwaelo tsohle di kenyelletswa pehelo ya makgaola kgang e romelwang bolaoding ba Naha le ba Provinse ho ya hlahlojwa.
- Rekoto ya Diqeto (RYD)

RYD ho fanwa ka yona ke Lefapha la Naha la Ditaba tsa Tikoloho le Bohahlaudi. Bathahaselli bohle ba ngodisitsweng ba tsebiswa. Setjhaba se nehwa matsatsi a 30 ho etsa boipiletso ba RYD ka ho ngola fatshe haebe ha ba dumellane le diphumano.

Ela hloko hore diprojeke ka bobedi di tla latela tshebetso e tshwanang mme di tla tsaaya mmoho.

Diphuputso tse etswang Ditsebi tse Kgethehileng

Ho tla etswa diphuputso tse fapaneng tse ikgethang jwalo ka karolo ya *EIAs*. Diphuputso tsena di kenyelletsa:

- ◆ Botjhaba ◆ Dinonyana ◆ Ekholoji
- ◆ Phedisano ◆ Tse bonwang

Mabitso a ditsebi tsena tse kgethehileng a ka fumanwa Ofising ya Mesebetsi ya Ho ba Seabo ha Setjhaba e leng *Public Involvement Office*. Dintilha di ka fumanwa leqepheng la 8.

Die Omgewingsimpakstudie-proses

Dienste sal Omgewingsimpakstudies (OIS) vir beide roete-opsies doen. Benewens die formele aansoeke en konsultasie met omgewingsowerhede op Nasionale en Provinsiale vlak, bestaan die OIS-proses uit drie fases:

- Omvangsfase
 - Die konsultant bepaal die opvang van die verskillende roetes vir ‘n beter begrip van die moontlike impak daarvan. Bykomende korridors mag in die studiegebied geïdentifiseer word.
 - Die publiek word uitgenooi om kwessies en probleme met betrekking tot die roetekorridors te opper;
 - Die inligting word saamgevat en ‘n Konsepomvangsverslag word voorberei en vrygestel vir openbare kommentaar. Voorkeurkorridors mag geïdentifiseer word.
- Omgewingsimpakfase
 - Die voorkeurkorridors word breedvoeriger ondersoek. Moontlike impakte word geëvalueer.
 - ‘n Konsepomgewingsimpakverslag (Konsep-OIV) word voorberei en vir openbare kommentaar vrygestel.
 - Alle kommentaar word in die finale verslag ingewerk wat aan die Nasionale en Provinsiale owerhede voorgelê word vir hersiening.
- Register van Besluit (RVB)

‘n RVB is deur die Nasionale Departement van Omgewingsake & Toerisme uitgereik. Alle geregistreerde belanghebbendes word ingelig. Die publiek het 30 dae om skriftelik teen die RVB te appelleer indien hulle nie met die bevindinge saamstem nie.

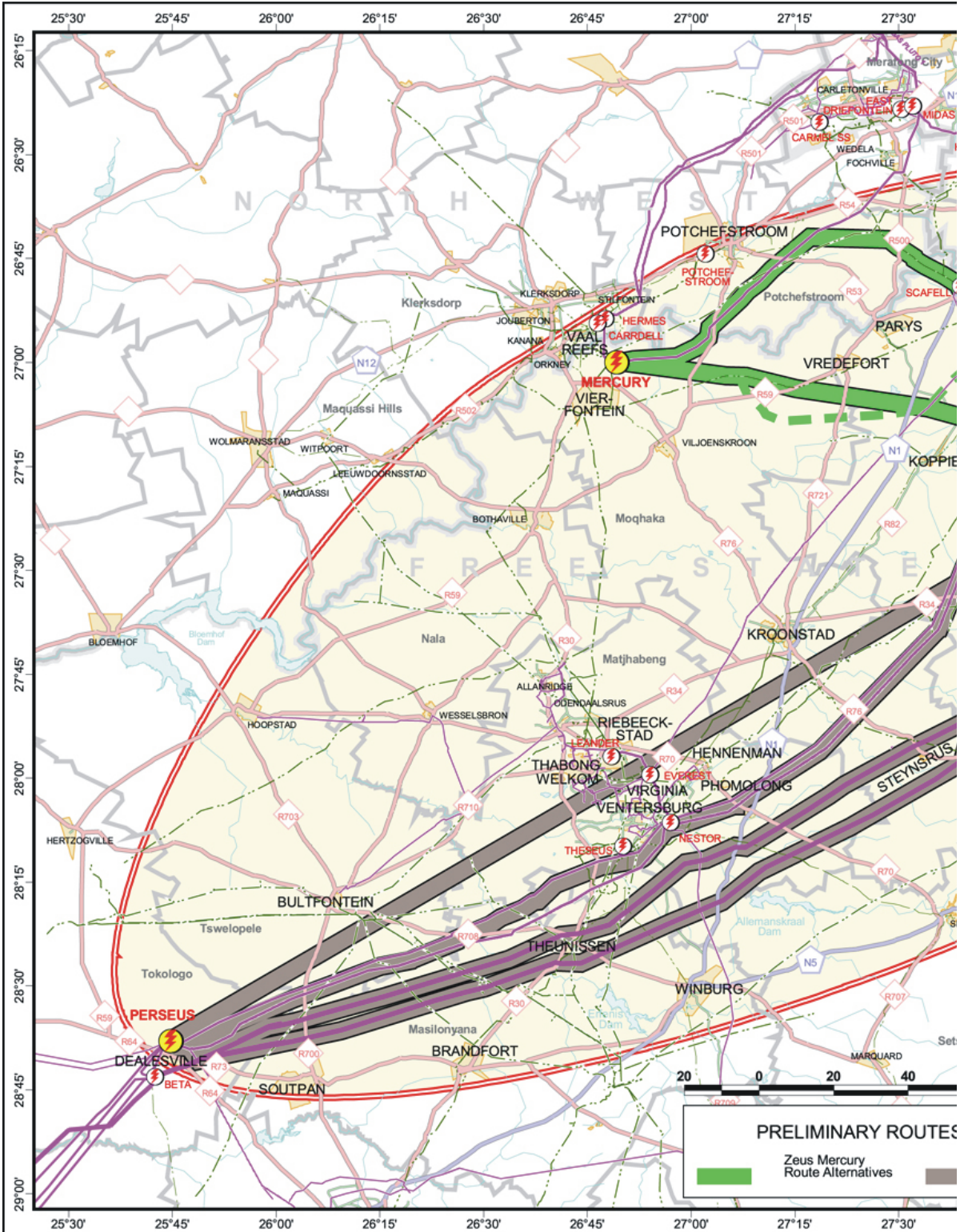
Neem kennis dat albei projekte dieselfde proses sal volg en gelyktydig sal plaasvind.

Spesialisstudies

Verskillende spesialisstudies sal as deel van die OIS’e onderneem word. Hierdie studies sluit in:

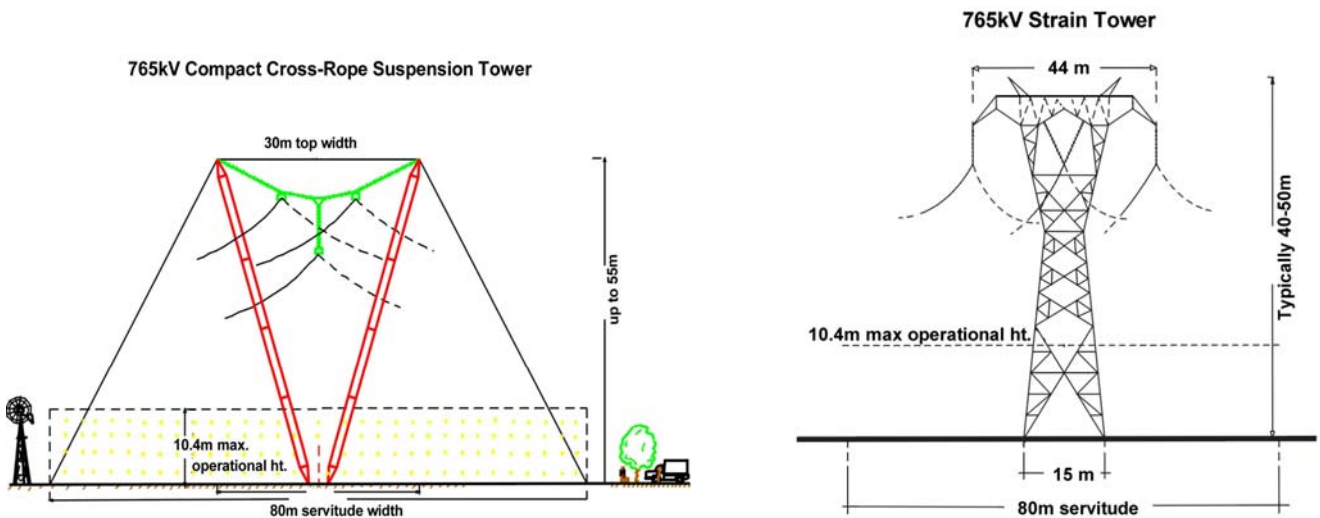
- ◆ Erfenis ◆ Voëls ◆ Ekologie
- ◆ Maatskaplik ◆ Visueel

Die name van die spesialiste kan verkry word by die Openbare Deelname Kantoor. Kontakbesonderhede verskyn op bladsy 8.



Generic issues associated with Transmission Power Lines during construction & operation	Izindaba eziywayelekile eziphathelene nokwakhiwa kanye nokusetshenziswa kwe-Transmission Power Lines		
Socio-Economic	Natural Environment		
Improvement of reliability of supply, national, provincial & local.	Erosion		
Eco-tourism	Impact on plants		
Compensation for servitudes	Impact on birds		
Agricultural activities	Impact on wetlands & conservation areas		
Property values	Poaching of fauna and flora		
Social & well-being	Cultural & Historical Sites		
Electromagnetic Fields (EMFs)	Management of alien plants		
Fire management	Cultural & Historical Sites		
Dust & noise pollution	Palaentological sites		
Safety	Cultural & historical sites		
Immigration of construction workers	Religious sites		
Relocation of people	Alternative options		
Visual impacts	Strategic considerations		
Loss of sense of place	Other sources of power generation		
Access roads	Other route alignments		
	Design Alternatives		

TYPICAL STRUCTURES WHICH COULD BE USED FOR THE 765kV TRANSMISSION POWER LINE



The public participation process

Your responsibilities

You have a right to participate in this process by requesting further information or by informing the consultant of your concerns regarding the environment and the new lines. To exercise this right you must register with the public Involvement office. You can register yourself, or through someone (eg tribal chief, farmers' association) who speaks for you or your community. You also have a responsibility to inform others whom you think may be interested or affected by the development, and encourage them to register. You can register at any stage of the study, but it is important to register as early as possible.

Your participation may influence the recommendations /decisions made on this project. Any information provided by you will be considered in the assessments.

You can register for one or both projects

Our responsibilities

You can contact us by telephone, cell, fax, e-mail, registration form or letter using the contact details in the text box alongside. We will take the following actions:

- The contact details you give us will be entered into a database and you will be sent all further information releases.
- If you send us queries or comments we will respond in writing.
- If you call us we will record your details and queries or comments, and we will get a consultant to call you back if we cannot answer your question immediately

Public Involvement Office Contact Details

Margen Industrial Services:
P O Box 12822,
Leraatsfontein, 1038

Tel: (013) 690 3928
Fax: (013) 699 0917
e-mail: delno@telkomsa.net

Contact:

Moses Mahlangu Cell 082 854 9538
Marianna Nieuwoudt: Cell 082 459 1021

Visit the website : www.eskom.co.za/eia

Inqubo Yokubamba iqhaza komphakathi

Izibopho zakho

Unelungelo lokubamba iqhaza kule nqubo ngokucela Ulwazi olwengeziwe noma ukwazisa amakhonsalithenti ngokukhathalela kwakho ngokuphathelene nemvelo kanye nolayini abasha. Ukusebenzisa leli lungelo kumele uzibhalise ehhovisi Elizibandakanyayo lomphakathi. Ungazibhalisa ngokwakho, noma usebenzise omunye umuntu (isib inkosi yesizwe, inhlango yabalimi) okhulumela wena noma umphakathi wakho. Unesibopho futhi sokwazisa abanye ocabanga ukuthi bangaba nokukhathalela noma bathelelwe yiloku kuthuthukiswa, bese ubagququzela ukuthi bazibhalise. Ungabhalisa nganoma yisiphi isigaba socwaningo, kodwa kusemqoka ukuthi uzibhalise ngokushesha uma uphumelela.

Ukubamba iqhaza kwakho kungathelela iziphakamiso/ izinqumo ezenziwe kule phrojekthi. Noma yiluphi ulwazi olunikezwa nguwe luzobhekwa ekuhlolweni.

Ungazibhalisela iphrojekthi eyodwa noma zombili

Izibopho zethu

Ungaxhumana nathi ngocingo, iseli, ifeksi, i-e-meyili, ifomu lokuzibhalisa noma incwadi usebenzisa imininingwane ebhokisini lolwazi eliseduzane. Sizokwenza okulandelayo:

- Imininingwane yokuxhumana osinikeza yona izakufakwa kunqolobane yemininingwane futhi uzawuthunyelwa lonke ulwazi olukhishiwe.
- Uma usithumela imibuzo nemibono sizokuphendula ngokukubhalela.
- Uma usishayela sizokurekhoda imininingwane yakho, imibuzo kanye nemibono, bese sithola ikhonsalithenti ukuthi ikushayele ucingo uma singakwazi ukuphendula imibuzo yakho ngokushesha.

Tshebetso ya ho ba le seabo ha setjhaba

Boikarabelo ba hao

O na le tokelo ya ho ba le seabo tshebetsong ena ka ho kopa tlhahisoleseding e nngwe hape kapa ka ho bolella khonsaltente matshwenyeho a hao mabapi le tikoloho le mela e metjha. Bakeng sa ho sebedisa tokelo ena o lokela ho ingodisa le ba ofisi ya ho ba le Seabo ha Setjhaba. O ka ingodisa wena kapa wa ngodisa motho e mong (mohlala, morena wa sebaka, mokgatlo wa balemi) ya tla bua lebitsong la hao kapa baahi ba heno. Hape o na le boikarabelo ba ho tsebisa ba bang bao o nahanang hore ba ka ba le kgahleho kapa ba ka angwa ke mosebetsi ona, mme o ba kgothaletse hore ba ingodise. O ka ingodisa boemong bofe kapa bofe ba diphuputso, empa ho bohlokwa hore o ingodise ka potlako ka ho ya ka moo ho ka kgonehang.

Seabo sa hao se ka ba le tshusumetso dikgothaletsong/diqetong tse etsuwang projekeng ena. Tlhahisoleseding efe kapa efe eo o faneng ka yona e tla elwa hloko ditekolong

O ka ingodisa ho e nngwe ya diprojeke kapa ho tsona ka bobedi

Boikarabelo ba rona

O ka iteanya le rona ka mohala, selfounu, fekse, e-mail, foromo ya boingodiso kapa lengolo o sebedisa dintlha tse ka lebokosong lena le ka thoko. Re tla nka mehato e latelang:

- Dintlha tsa moo re ka iteanyang le wena tseo o re romelang tsona di tla kengwa ho *database* mme o tla romelwa tlhahisoleseding e nngwe yohle ha e hlaliswa.
- Ha o re romela dipotso kapa ditshwaelo re tla araba ka ho o ngolla.
- Ha o re letsetsa re tla ngola fatshe dintlha tsa hao le dipotso kapa ditshwaelo, mme re tla bolella khonsaltente e iteanye le wena ha re sa kgone ho araba dipotso tsa hao ka potlako

Public Involvement Office Contact Details

Margen Industrial Services:
P O Box 12822,
Leraatsfontein, 1038

Tel: (013) 690 3928
Fax: (013) 699 0917
e-mail: delno@telkomsa.net

Contact:

Moses Mahlangu Cell 082 854 9538

Marianna Nieuwoudt: Cell 082 459 1021

Visit the website : www.eskom.co.za/eia

Die openbare deelname proses

U verantwoordelikhede

U het 'n reg om aan hierdie proses deel te neem deur verdere inligting te versoek of deur die konsultante in te lig oor u besorgdheid oor die omgewing en die nuwe lyne. Om dié reg uit te oefen, moet u by die Openbare Deelname Kantoor registreer. U kan uself registreer, of deur iemand (bv stamhoof, boerevereniging) wat namens u of u gemeenskap praat.. U het ook 'n verantwoordelikheid om ander in te lig wat u dink in die ontwikkeling sou belangstel or daardeur geraak sal word, en hulle aan te moedig om te registreer. U kan op enige tydstep tydens die studie registreer, maar dit is belangrik om so vroeg as moontlik te registreer.

U deelname kan moontlik die aanbevelings /besluite wat oor hierdie projek geneem word, beïnvloed. Enige inligting wat deur u verskaf word, sal in die evaluering oorweeg word.

U kan vir een of beide projekte registreer

Ons verantwoordelikhede

U kan ons per telefoon, selfoon, faks, e-pos, registrasievorm of brief kontak deur die kontakbesonderhede hiernaas te gebruik. Ons sal die volgende stappe neem:

- Die kontakbesonderhede wat u verskaf het, sal op 'n databasis geplaas word en alle verdere inligtingstukke sal aan u gestuur word.
- Indien u navrae het of kommentaar lewer, sal ons skriftelik daarop reageer.
- Indien u ons skakel, sal ons u besonderhede en navrae of kommentaar aanteken, en ons sal 'n konsultant vra om u terug te skakel indien ons u vraag nie dadelik kan beantwoord nie.



Environmental Impact Assessment

765kV Transmission Lines

Zeus Substation to Perseus Substation ♦ Zeus Substation to Mercury Substation



Interested & Affected Party Registration Form



Eskom Transmission is planning to strengthen the existing network between Mpumalanga and the Eastern Cape to meet urgent short-term for Coega as well as longer-term demands in the Eastern Cape. As part of this network strengthening, two new 765kV Transmission Lines are planned:

- A 765kV Transmission Line between the Zeus Substation, near Standerton (Mpumalanga) – Mercury Substation near Vierfontein (FreeState);
- A 765kV Transmission Line between the Zeus Substation and the Perseus Substation near Dealesville (Free State).

Separate environmental studies will be conducted for each options.

In line with environmental regulations, Eskom Transmission has appointed Margen Industrial Services to conduct the Environmental Impact Assessment (EIA). If you wish to participate in this study, please register as an Interested & Affected Party by completing the form below and returning it to the Public Participation Office:

Margen Industrial Services

PO Box 12822, Leraatsfontein, 1038 ♦ Tel: (013) 690 3928 ♦ fax: (013) 699 0917 ♦ e-mail: delno@telkomsa.net

Contact: Moses Mahlangu Cell 082 854 9538 ♦ Marianna Nieuwoudt: Cell 082 459 1021

TITLE (Prof, Dr, Mr, Mrs Ms)		FIRST NAME	
INITIALS		SURNAME	
ORGANISATION			
CAPACITY (e.g secretary chairperson)			
ADDRESS			
POSTAL CODE		TEL NO	
FARM NAME		FAX NO	
FARM NO		CELL NO	
E-MAIL ADDRESS			

What is your main interest in this project?

.....
.....

What issues and concerns would you like to see addressed as part of this project?

.....
.....
.....

PLEASE ADD THE FOLLOWING PERSON/S TO THE MAILING LIST:

Name:.....Sector/Organisation:.....
...

Telephone no/fax no/address/ e-mail:

.....
.....

Thank you for your participation



