



## ENVIRONMENTAL IMPACT ASSESSMENT PROCESS FOR THE PROPOSED 400/132kV HOUHOEK ESKOM TRANSMISSION SUBSTATION, INCLUDING THE BACCHUS – PALMIET 400kV LOOP-IN AND LOOP-OUT TRANSMISSION POWER LINES, WESTERN CAPE PROVINCE

NEAS Reference No: DEA/EIA/0001397/2012

DEA Reference No: 14/12/16/3/3/2/401

Notice is hereby given that Eskom Holdings State Owned Company (SOC) Limited proposes to undertake an Environmental Impact Assessment (EIA) process for the proposed 400/132kV Houhoek Eskom Main Transmission Substation (MTS) in Theewaterskloof Local Municipality, Western Cape Province. The proposed development will include the following power lines that connect to the proposed Houhoek Eskom MTS:

- 132kV Distribution power line from the existing 132kV Houhoek Eskom Distribution Substation.
- Loop-in and loop-out double-circuit 400kV Transmission power line from the existing Bacchus-Palmiet 400kV Transmission power line of  $\pm 1.7$ km.

This notice is issued in terms of Section 54 of Government Notice Regulation (GNR) No. 543 of the EIA Regulations (2010). These regulations fall under the ambit of the National Environmental Management Act (No. 107 of 1998) as amended (NEMA).

### PROCESS DESCRIPTION

The EIA process would be undertaken in terms Sections 26 – 35 of GNR 543 of the EIA Regulations (2010). The EIA process will require specialist studies to assess the site locations for the proposed Houhoek Eskom MTS and the corridors of the associated power lines. The specialist studies to be included in the EIA process are:

- Geotechnical Investigation.
- Soil and Agricultural Potential Assessment.
- Ecological and Avifaunal Assessment.
- Social Impact Assessment.
- Heritage Impact Assessment.
- Visual Impact Assessment.
- Wetland Delineation and Assessment (potential).

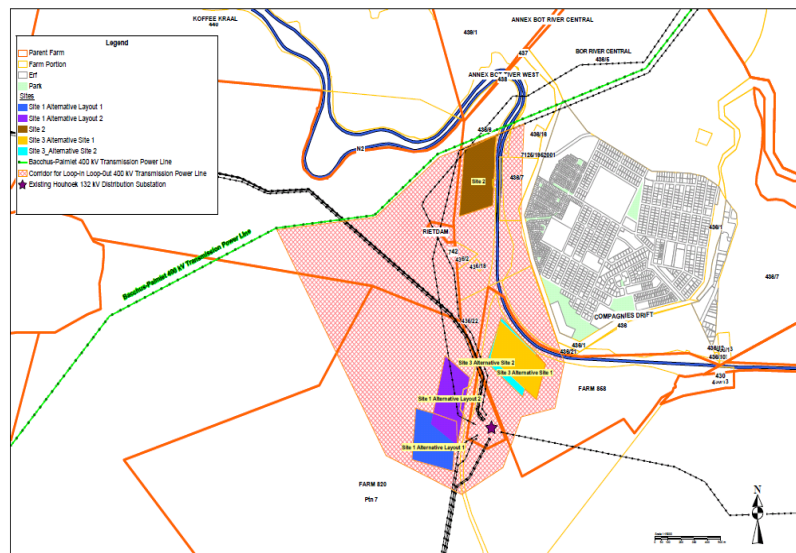


Figure 1: Locality Plan

### SITE LOCATION AND DESCRIPTION

See Figure 1 for the study area that is located approximately 1km south-west of the town of Botrivier. The following site and layout alternatives will be considered:

- **Site Alternative 1:**  $\pm 200$ m west of existing Houhoek Eskom Distribution Substation, west of the R43 provincial road. There are **2 layout alternatives** will be considered (350m  $\times$  320m and 450m  $\times$  250m).
- **Site Alternative 2:**  $\pm 1.6$ km north of Site Alternative 1. Only **1 layout alternative** (350m  $\times$  320m) will be considered, due to the topography.
- **Site Alternative 3:** north and adjacent to the existing Houhoek Eskom Distribution Substation. There are **2 layout alternatives** that will be considered (350m  $\times$  320m and 450m  $\times$  250m).

**APPLICANT:** ESKOM HOLDINGS SOC LIMITED

**INDEPENDENT ENVIRONMENTAL ASSESSMENT PRACTITIONER:** BKS (PTY) LTD

**ENVIRONMENTAL AUTHORITY:** NATIONAL DEPARTMENT OF ENVIRONMENTAL AFFAIRS (DEA)

### REGISTRATION OF INTERESTED AND AFFECTED PARTIES (I&APs)

In order to ensure that you are registered as an I&AP and to receive future correspondence regarding the proposed development, please submit your name, contact information, interest in the matter and any comments you may have, to the contact person indicated below.

Please direct comments or enquiries to:

**Mamokete Maimane at BKS:**

**Tel:** 012 421 3699

**Fax:** 012 421 3546

**Post:** P O Box 3173, Pretoria, 0001

**E-mail:** J01887-Houhoek@bksemd.co.za