

EIA AND EMP FOR THE PROPOSED INSTALLATION OF AN ADDITIONAL 500M<sup>3</sup> BULK STORAGE FUEL OIL TANK AT GROOTVLEI POWER STATION, MPUMALANGA PROVINCE

PUBLIC OPEN DAY AND PUBLIC MEETING AND DRAFT BAR NOTIFICATION POSTERS ERECTED IN STUDY AREA (September 2011)



Figure 1: Reception – Eskom Grootblei Power Station



Figure 2: Reception – Eskom Grootblei Power Station



Figure 3: Old Eskom Hall



Figure 4: Old Eskom Hall



Figure 5: Old Eskom Hall



Figure 6: Damandi Supermarket



Figure 7: Damani Super Supermarket



Figure 8: Village Main Entrance

Figure 9: Village Main Entrance

Figure 10: BIDs – Grootvlei Butchery



Figure 11: Village Main Entrance



Figure 12: Tshepheha School



Figure 13: Tshepheha School



Figure 14: Village Supermarket

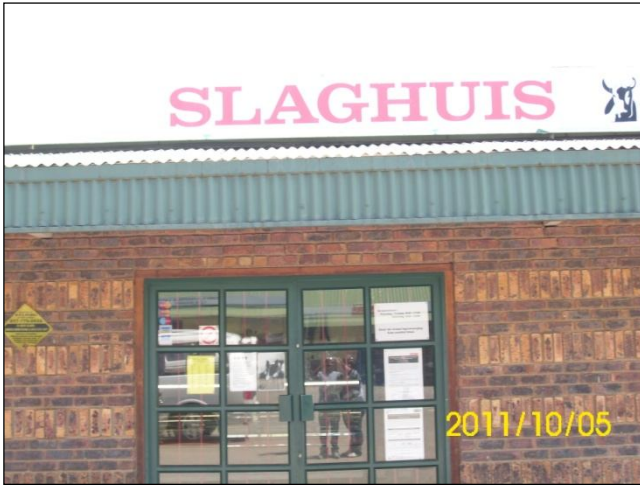


Figure 15: Village Butchery



Figure 16: Village Butchery



Figure 17: Main Entrance, Village Supermarket



Figure 18: Post Boxes, Grootvlei