

Appendix B. Changes in the areas of mobile dunes between 1942 and 2011 on the Cape St Francis headland. The areas were mapped using aerial photographs and images from 1942 to 2011.

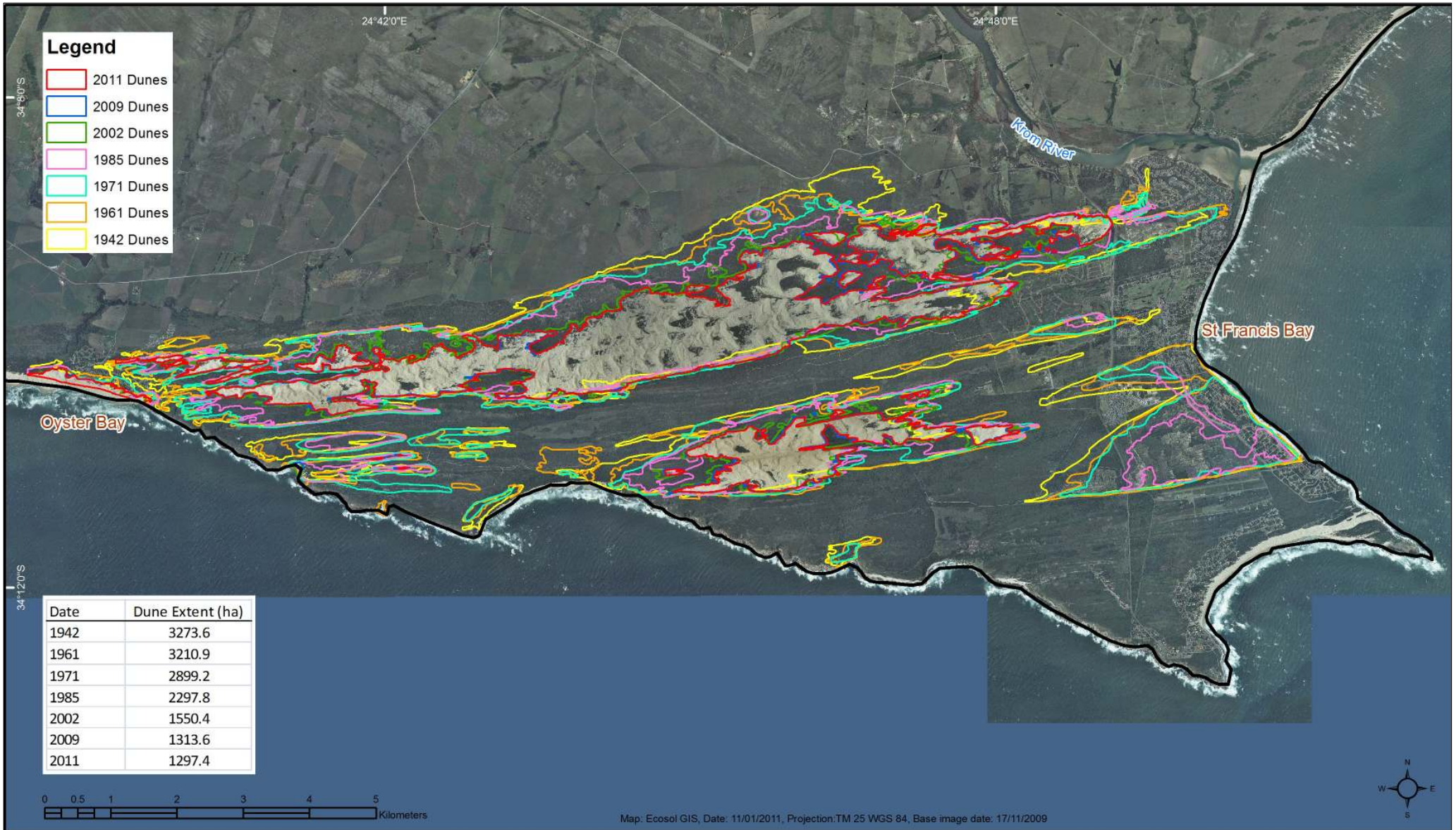
The areas of mobile dunes are plotted:

“Continuous” means the area has been covered with mobile dunes over the time period under consideration;

“Gain” shows areas that have become mobile dunes, i.e. the dunefield has advanced into these areas;

“Loss” shows dune areas that have become vegetated.

If one scrolls rapidly through the images a “slide show” is created that very effectively demonstrates of the changes in mobile dune areas.



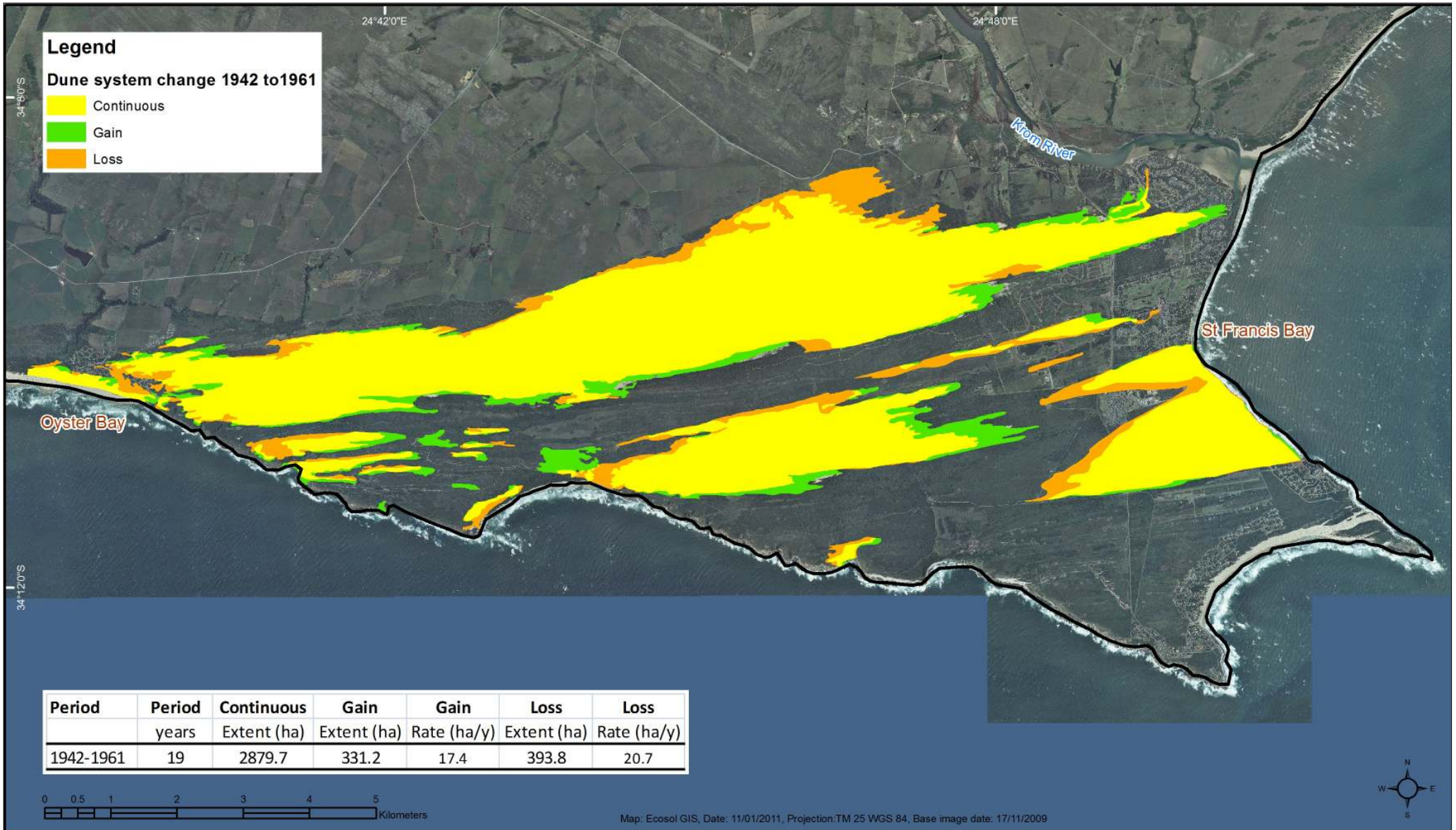
- Legend**
- 2011 Dunes
 - 2009 Dunes
 - 2002 Dunes
 - 1985 Dunes
 - 1971 Dunes
 - 1961 Dunes
 - 1942 Dunes

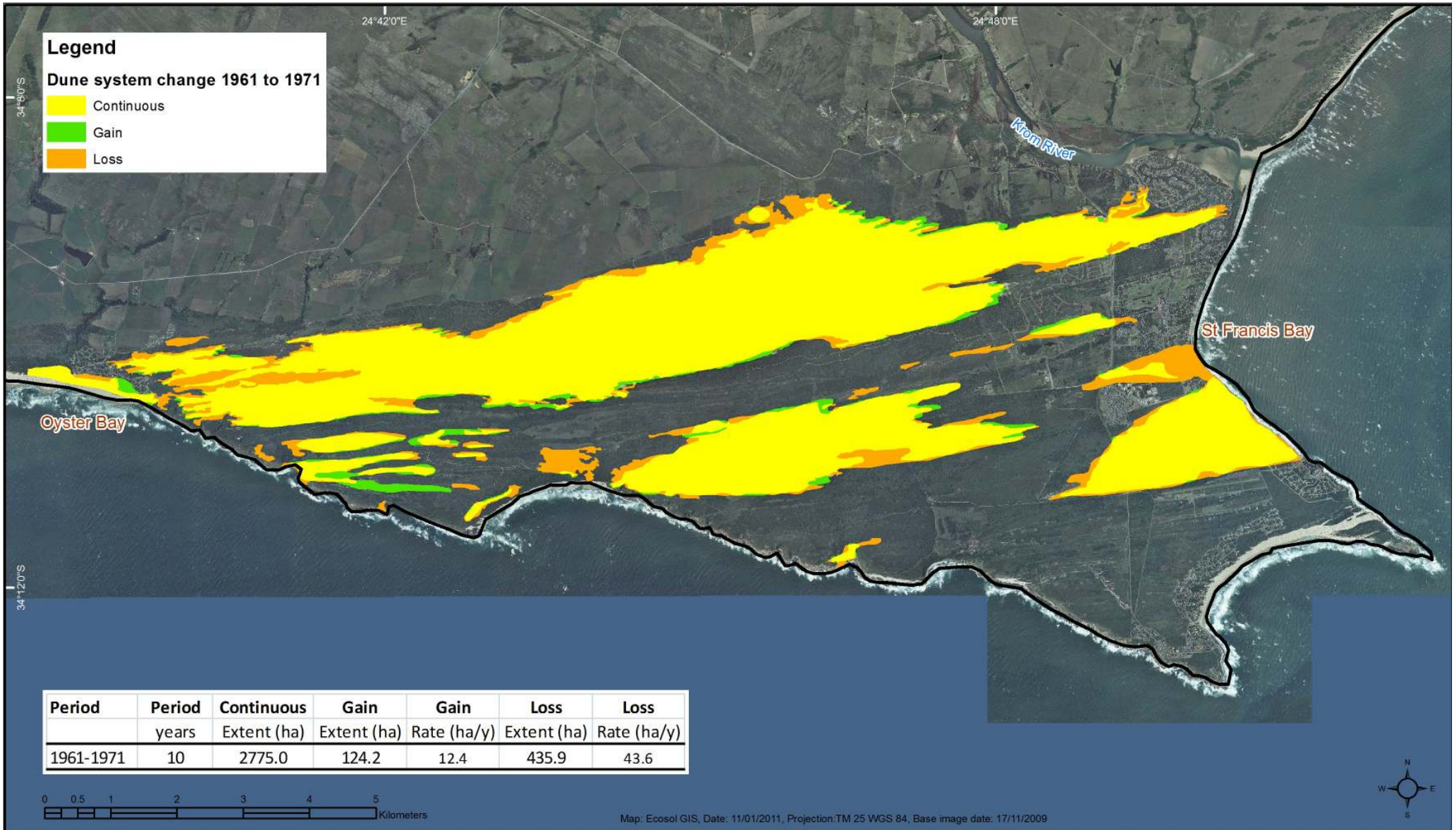
Date	Dune Extent (ha)
1942	3273.6
1961	3210.9
1971	2899.2
1985	2297.8
2002	1550.4
2009	1313.6
2011	1297.4

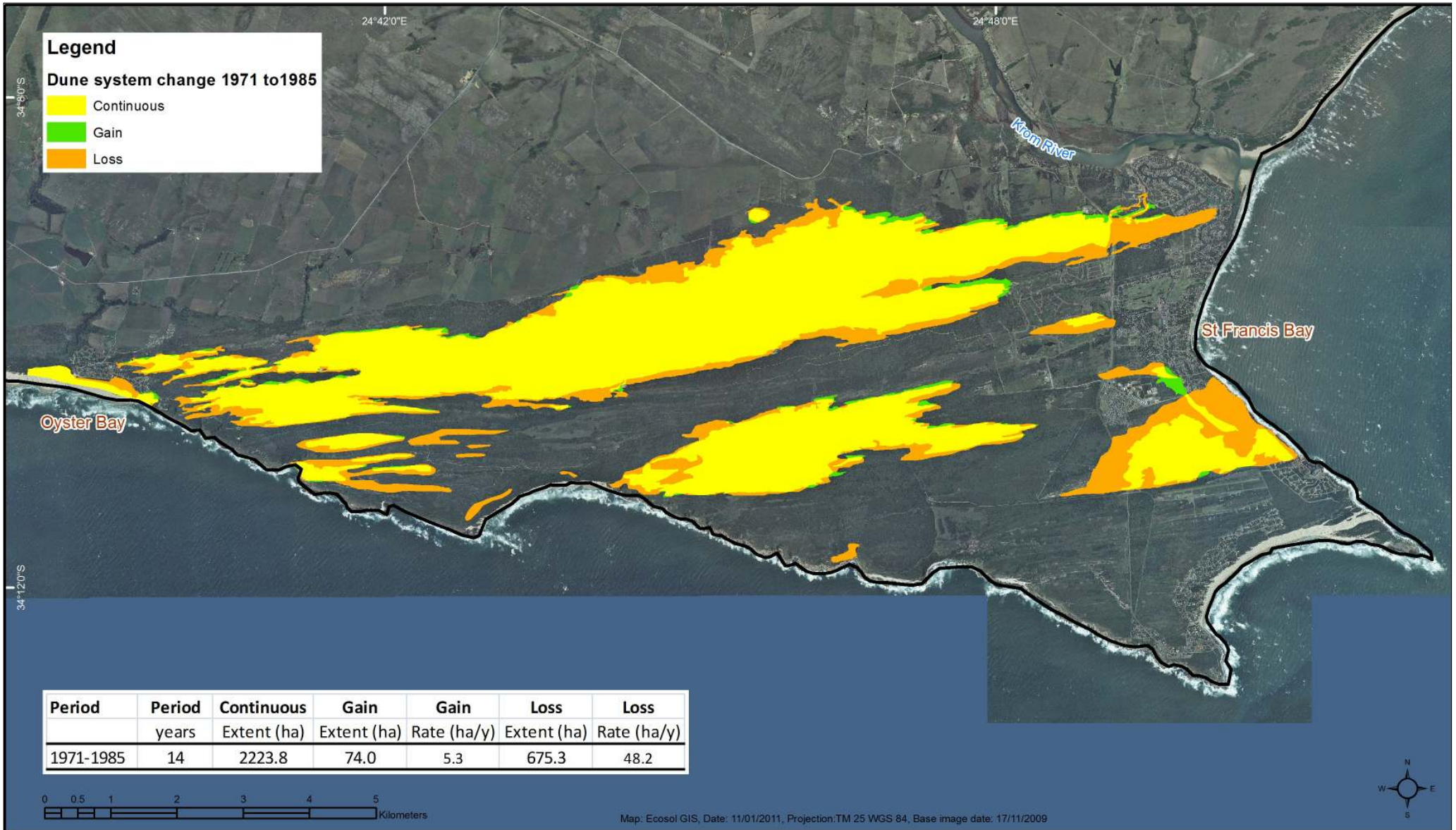
0 0.5 1 2 3 4 5 Kilometers

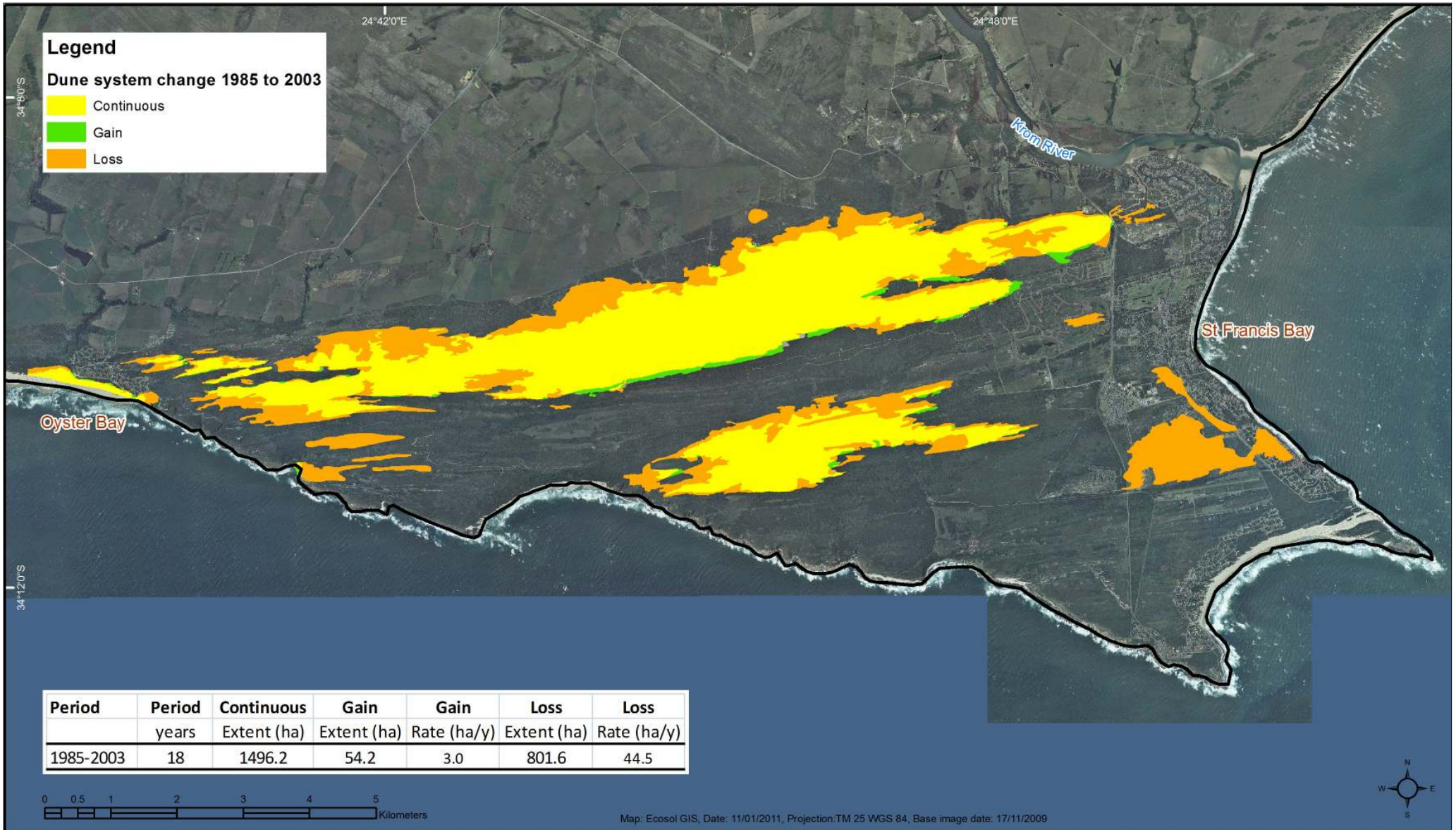
Map: Ecosol GIS, Date: 11/01/2011, Projection: TM 25 WGS 84, Base image date: 17/11/2009









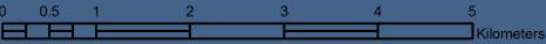


Legend

Dune system change 1985 to 2003

- Continuous
- Gain
- Loss

Period	Period	Continuous	Gain	Gain	Loss	Loss
	years	Extent (ha)	Extent (ha)	Rate (ha/y)	Extent (ha)	Rate (ha/y)
1985-2003	18	1496.2	54.2	3.0	801.6	44.5



Map: Ecosol GIS, Date: 11/01/2011, Projection: TM 25 WGS 84, Base image date: 17/11/2009



