

Appendix C. Changes in the areas of mobile dunes between 1942 and 2011 in the area around Oyster Bay, the feeder zone for the Oyster Bay headland-bypass dunefield. The areas were mapped using aerial photographs and images from 1942 to 2011.

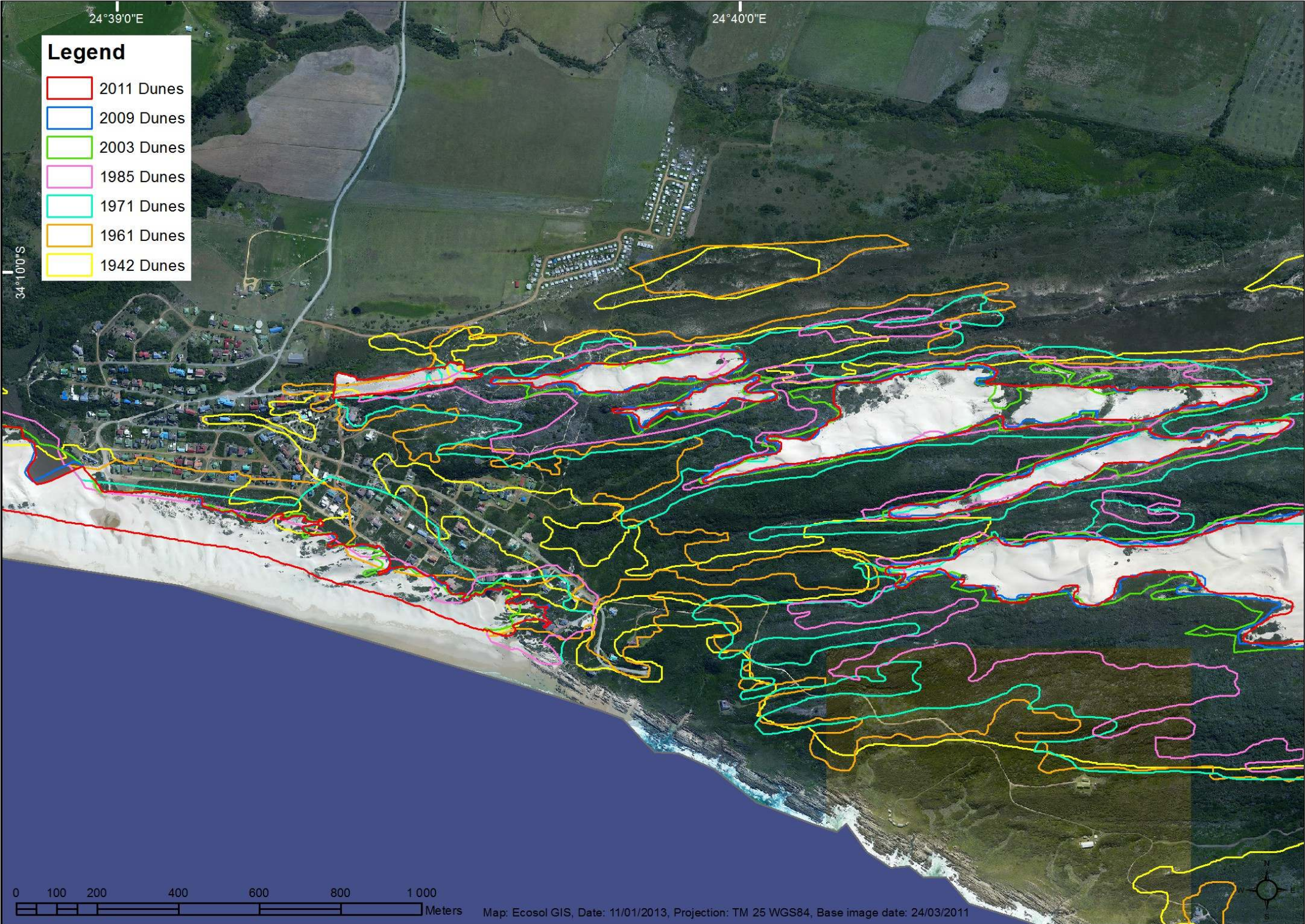
The areas of mobile dunes are plotted:

“Continuous” means the area has been covered with mobile dunes over the time period under consideration;

“Gain” shows areas that have become mobile dunes, i.e. the dunefield has advanced into these areas;

“Loss” shows dune areas that have become vegetated.

If one scrolls rapidly through the images a “slide show” is created that very effectively demonstrates of the changes in mobile dune areas.



24°39'0"E

24°40'0"E

Legend

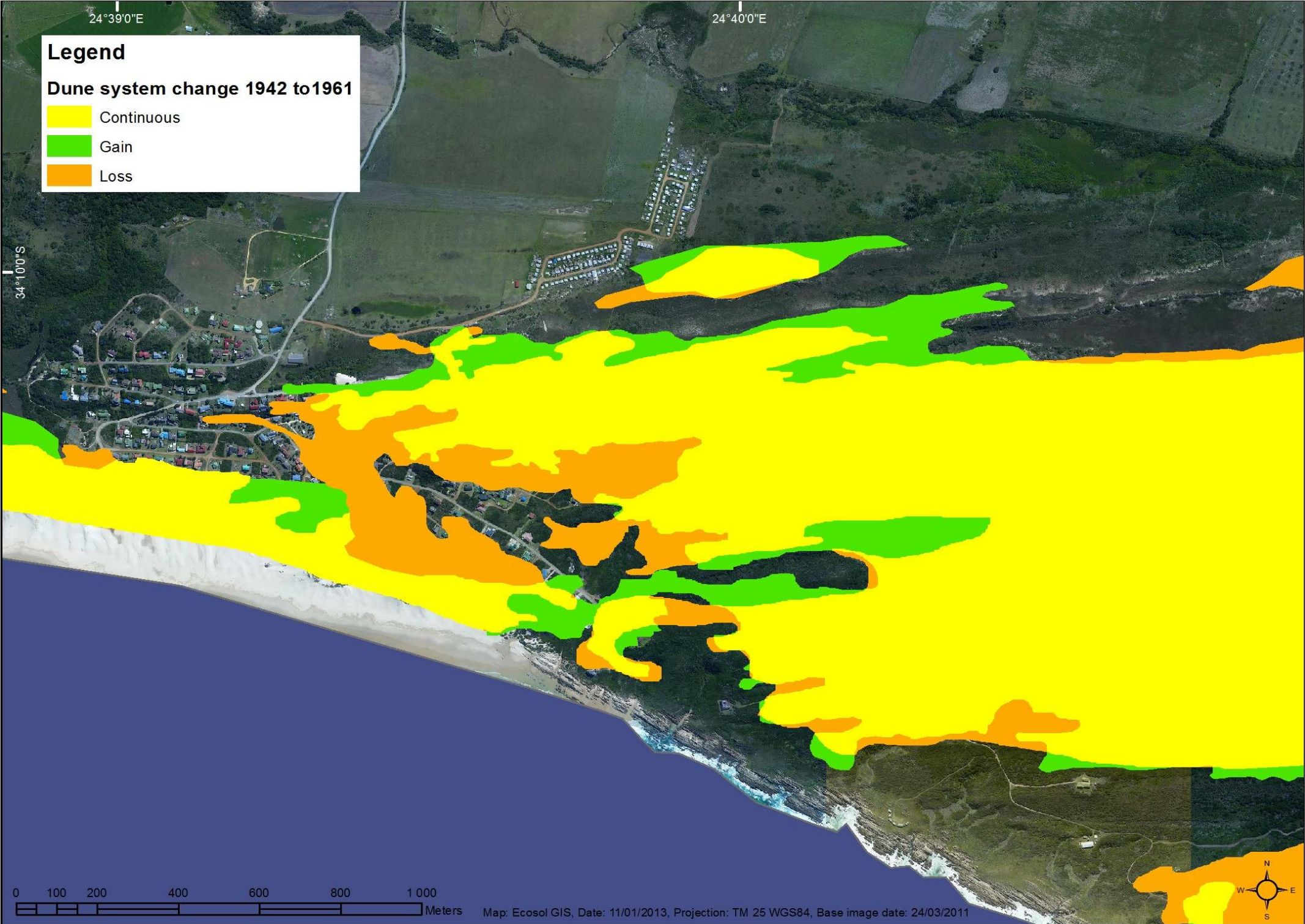
- 2011 Dunes
- 2009 Dunes
- 2003 Dunes
- 1985 Dunes
- 1971 Dunes
- 1961 Dunes
- 1942 Dunes

34°10'0"S

0 100 200 400 600 800 1 000
Meters

Map: Ecosol GIS, Date: 11/01/2013, Projection: TM 25 WGS84, Base image date: 24/03/2011





Legend

Dune system change 1942 to 1961

- Continuous
- Gain
- Loss

0 100 200 400 600 800 1 000
Meters

Map: Ecosol GIS, Date: 11/01/2013, Projection: TM 25 WGS84, Base image date: 24/03/2011



24°39'0"E

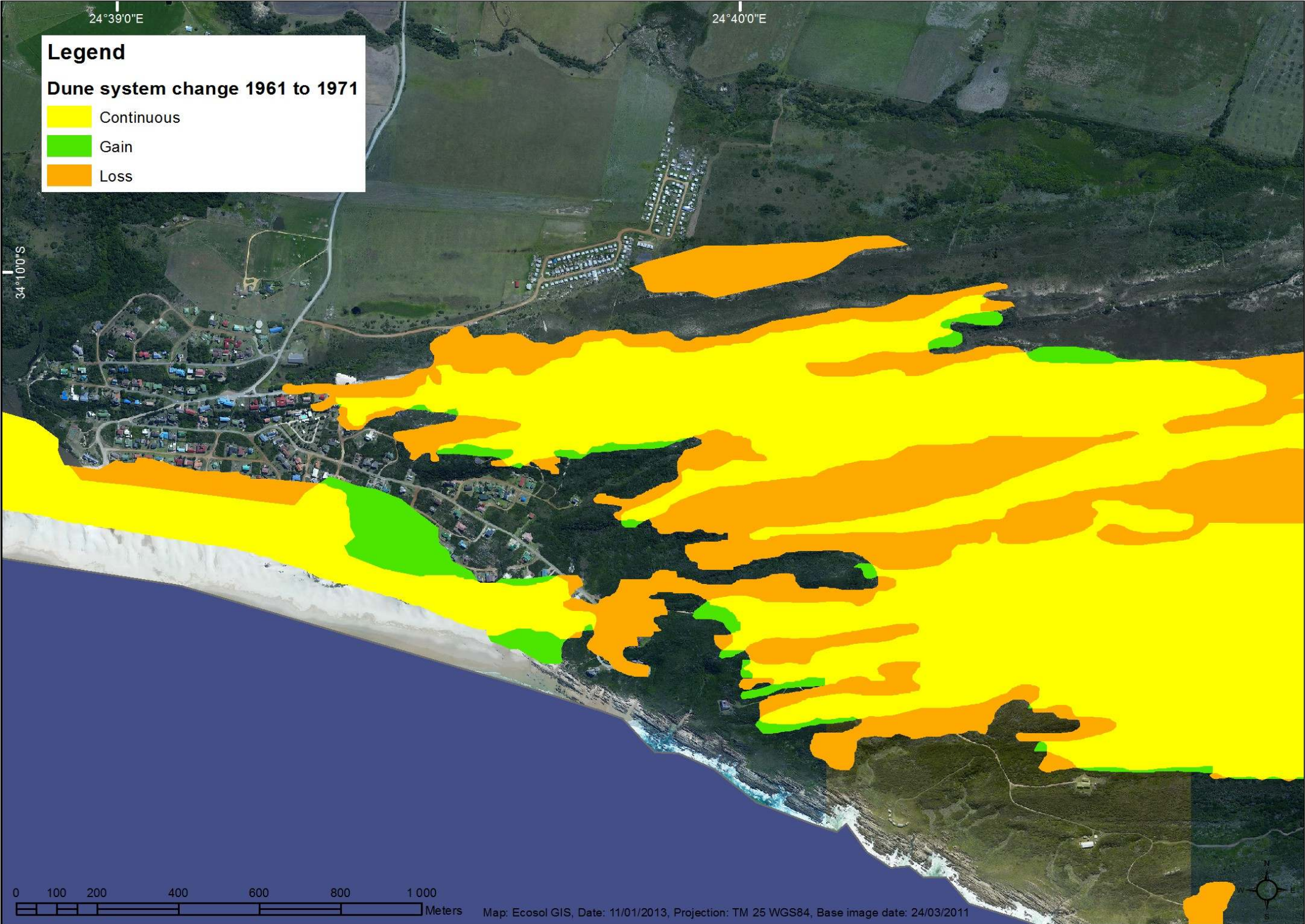
24°40'0"E

Legend

Dune system change 1961 to 1971

- Continuous
- Gain
- Loss

34°10'0"S



0 100 200 400 600 800 1 000
Meters

Map: Ecosol GIS, Date: 11/01/2013, Projection: TM 25 WGS84, Base image date: 24/03/2011



24°39'0"E

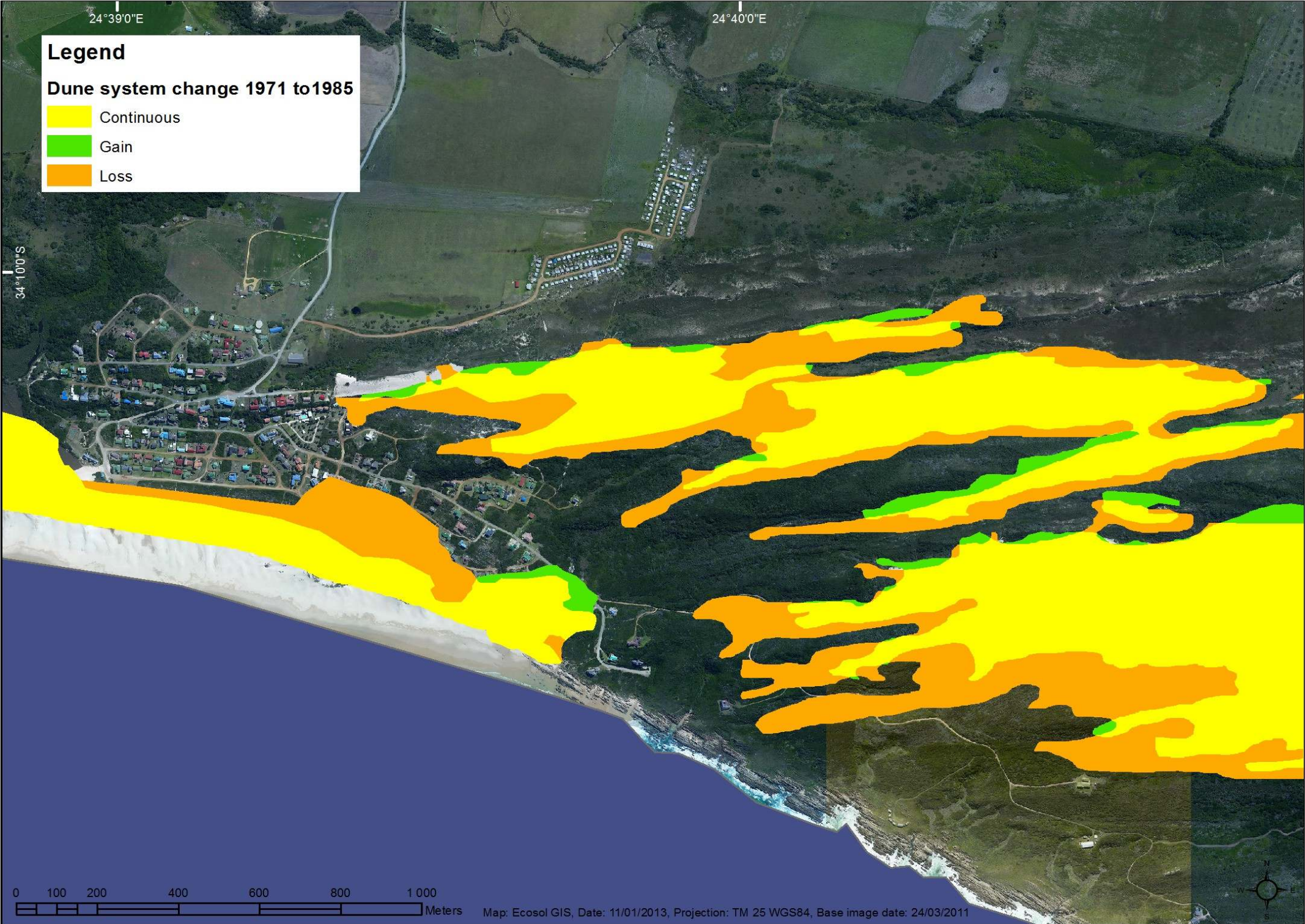
24°40'0"E

Legend

Dune system change 1971 to 1985

- Continuous
- Gain
- Loss

34°10'0"S



0 100 200 400 600 800 1 000
Meters

Map: Ecosol GIS, Date: 11/01/2013, Projection: TM 25 WGS84, Base image date: 24/03/2011



24°39'0"E

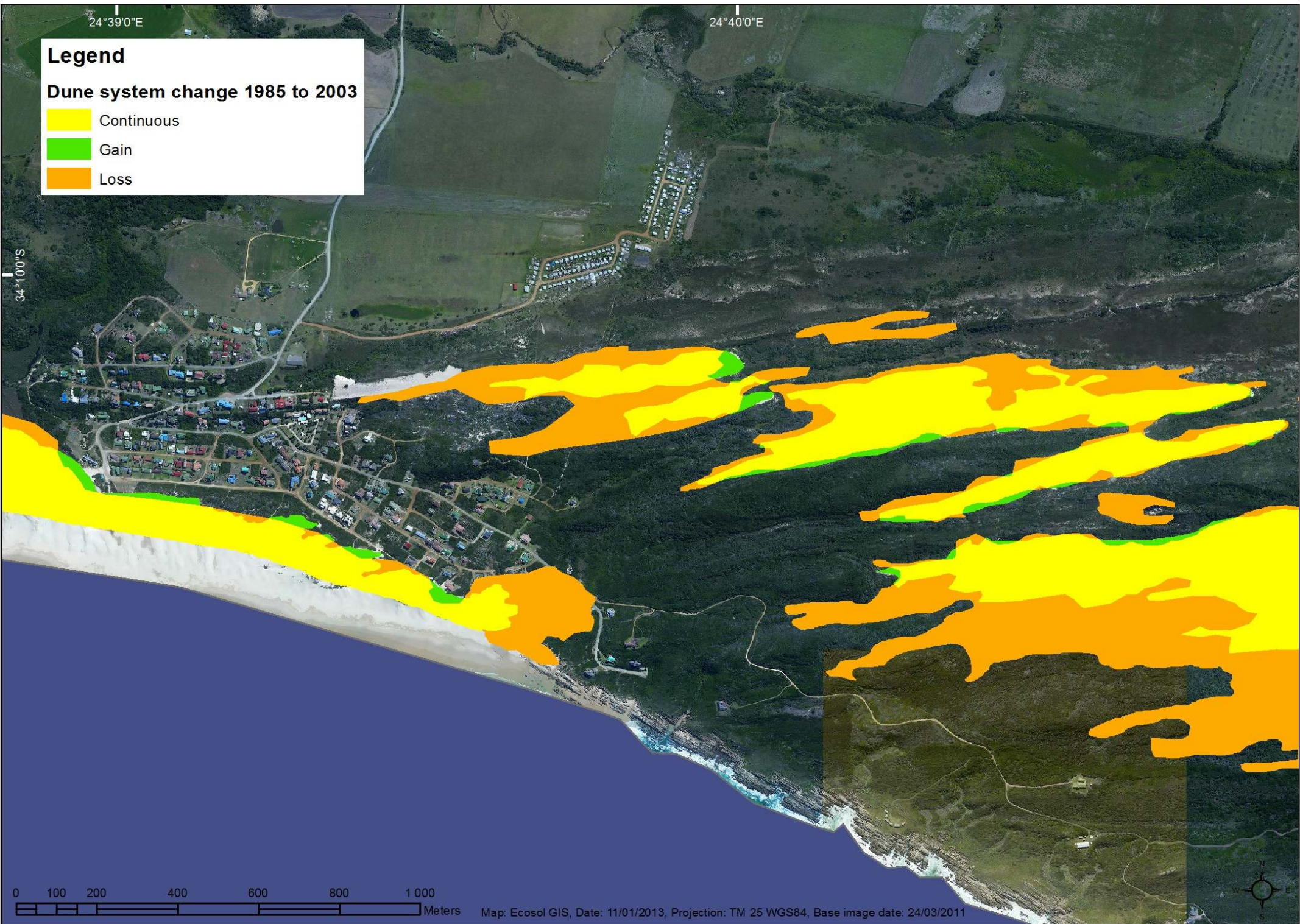
24°40'0"E

Legend

Dune system change 1985 to 2003

- Continuous
- Gain
- Loss

34°10'0"S



0 100 200 400 600 800 1 000
Meters

Map: Ecosol GIS, Date: 11/01/2013, Projection: TM 25 WGS84, Base image date: 24/03/2011



24°39'0"E

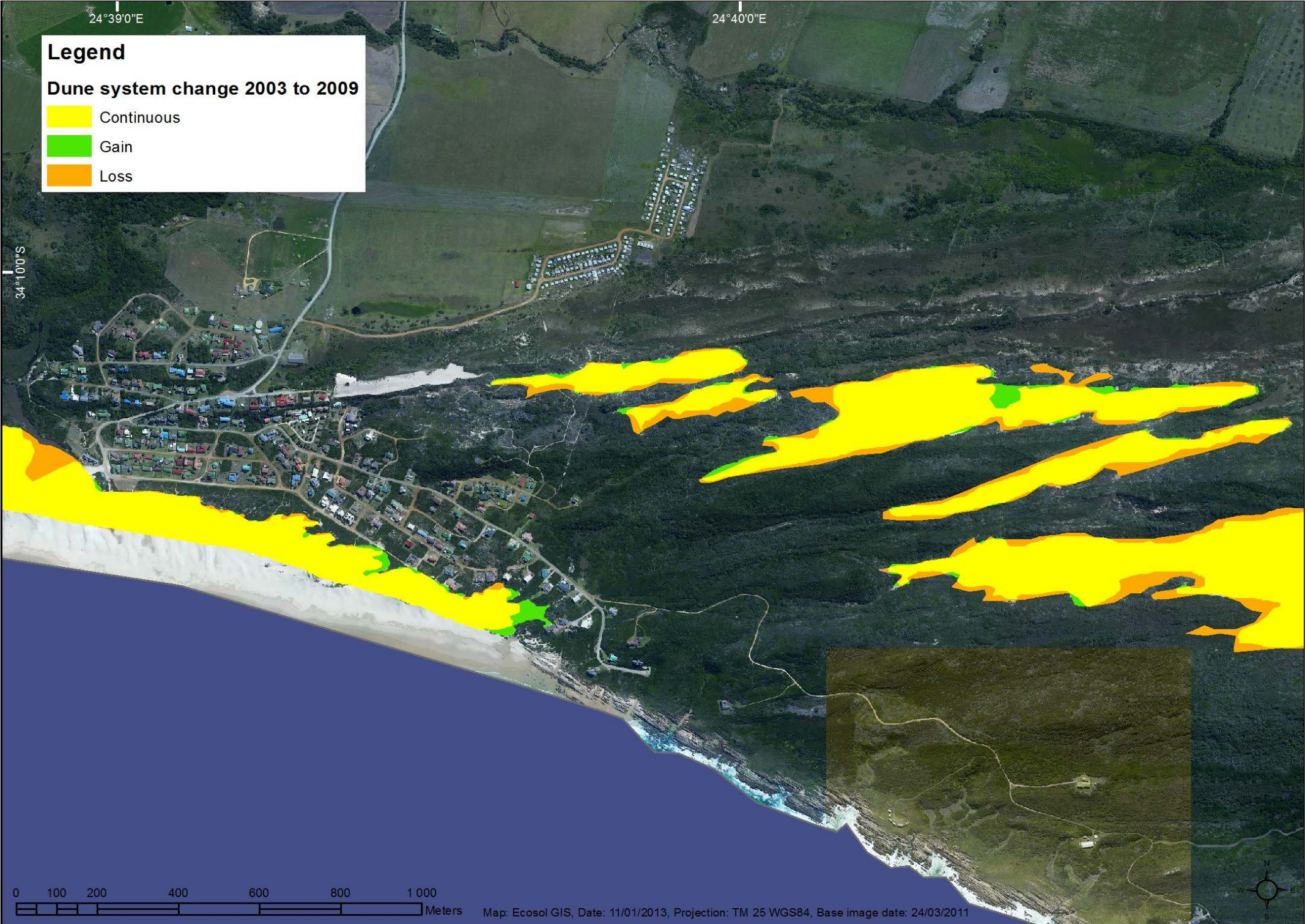
24°40'0"E

Legend

Dune system change 2003 to 2009

- Continuous
- Gain
- Loss

34°10'0"S



0 100 200 400 600 800 1 000
Meters

Map: Ecosol GIS, Date: 11/01/2013, Projection: TM 25 WGS84, Base image date: 24/03/2011



24°39'0"E

24°40'0"E

Legend

Dune system change 2009 to 2011

- Continuous
- Gain
- Loss

Cleared for urban development

34°10'0"S

