

The logo for SiVEST, featuring the word "SiVEST" in white capital letters on a red rectangular background.

# **Proposed Thyspunt Transmission Lines Integration Project (TTLIP)**

## **MINUTES OF FOCUS GROUP MEETING**

**Held on  
Saturday, 28 January 2012**

**at  
Gamtkwa KhoiSan Cultural Centre, Hankey**

---

**SiVEST Environmental (Pty) Ltd**

**Name:** Nicolene Venter / Faith Kalibbala

**Address:** PO Box 2921  
51 Wessels Road  
Rivonia 2128

**Tel:** 011 798 0600

**Fax:** 011 803 7272

**E-mail:** [thuypuntlines@sivest.co.za](mailto:thuypuntlines@sivest.co.za)

---

**Draft Minutes prepared by:**

**Nicolene Venter**

Please address any comments to Nicolene Venter at the above address.

## TABLE OF CONTENTS

<b>1</b>	<b>WELCOME AND INTRODUCTIONS .....</b>	<b>2</b>
<b>2</b>	<b>MEETING ATTENDEES .....</b>	<b>2</b>
<b>3</b>	<b>PURPOSE OF THE MEETING .....</b>	<b>2</b>
<b>4</b>	<b>BACKGROUND &amp; PROJECT CONTEXT .....</b>	<b>2</b>
<b>5</b>	<b>AN OVERVIEW OF THE PROPOSED PROJECT .....</b>	<b>3</b>
<b>6</b>	<b>SUMMARY OF ENVIRONMENTAL IMPACT ASSESSMENT (EIA) PROCESS UNDERTAKEN ...</b>	<b>3</b>
<b>7</b>	<b>DISCUSSION SESSION AND QUESTIONS .....</b>	<b>4</b>
<b>8</b>	<b>CLOSURE AND WAY FORWARD .....</b>	<b>4</b>

### YOUR COMMENTS ON THE DRAFT MINUTES

Your comments on these draft Minutes will be appreciated. In particular, we request you to verify that your comments, concerns and/or issues raised during the meeting have been minuted correctly. It is important to note that the draft Minutes are not verbatim.

## **FOCUS GROUP MEETING**

### **GAMTKWA KHOISAN CULTURAL CENTRE, HANKEY**

**Venue:** Gamtkwa KhoiSan Cultural Centre, Hankey  
**Date:** Saturday, 28 January 2012  
**Time:** 14h00

#### **1 WELCOME AND INTRODUCTIONS**

---

Nicolene Venter, SiVEST, as facilitator, thanked the attendees for attending the Focus Group Meeting and thus giving the project team an opportunity to present the proposed project to them. She requested the attendees to introduce themselves and to inform all present of their respective roles.

After the attendees introduced themselves, the Council informed the TTLIP team members that the Council was not aware that there will be legal representation from the team's side and after Eskom provided information regarding their attendance at the meeting, the Council requested to be excused for a few minutes to debate whether the meeting must proceed or not. After deliberation, SiVEST was informed that, in future, it would be appreciated if the Council are informed of which project team members will be attending the meeting.

The attendees were requested to identify themselves when raising questions, comments and/or concerns for minute taking purposes.

#### **2 MEETING ATTENDEES**

---

A copy of the Attendance Record is attached as Annexure A.

#### **3 PURPOSE OF THE MEETING**

---

Nicolene Venter informed the attendees that the purpose of the Focus Group Meeting was to:

- Provide the Council with information regarding the proposed project;
- Provide an opportunity for the Council to seek clarity on the project;
- Provide feedback on the environmental findings as in the draft EIR; and
- Record comments, issues and concerns raised at the meeting.

#### **4 BACKGROUND & PROJECT CONTEXT**

---

Paul da Cruz, SiVEST, Project Manager, explained that Eskom has to plan, establish and expand its generation capacity and transmission power lines infrastructure on an on-going basis. The attendees were requested not to confuse the Thyspunt Transmission Lines Integration Project (TTLIP) with that of the proposed Eskom Nuclear-1 Power Station Project of which the EIA is conducted by Arcus Gibb, the independent environmental consultants.

However Eskom Transmission has embarked on the following:

- To integrate the electricity that will be generated by the proposed Thyspunt Nuclear Power Station (should an Environmental Authorisation be granted by the Department of Environmental Affairs - DEA), Eskom Transmission (Tx) need to investigate possible Transmission power line routes (within the now 2km corridors) from the proposed Eskom Nuclear-1 Power Station at Thyspunt to a newly proposed Port Elizabeth Tx substation and to Eskom's existing Dedisa and/or Grassridge transmission substations.

## **5 AN OVERVIEW OF THE PROPOSED PROJECT**

---

Paul da Cruz informed attendees that:

- The applicant is Eskom Holdings Ltd;
- SiVEST has been appointed as the independent environmental consultants for the EIA;
- The decision-making authority is the Department of Environmental Affairs
- Need for the project: To link the electricity generated by the proposed Thyspunt Nuclear-1 Power Station into Eskom's electricity network;
- The proposed development entails: The construction of 5 x 400kV Tx power lines between Thyspunt and Port Elizabeth via Humansdorp, Hankey, Loerie, Rocklands, Uitenhage and Despatch to Eskom's existing Grassridge & Dedisa Tx Substations
- Two corridors are being investigated, a northern corridor and a southern corridor, that are not alternatives to one another;
- The construction of a newly proposed Port Elizabeth Tx Substation;
- The upgrade of Eskom's existing Grassridge and Dedisa Tx Substations; and
- The EIA process undertaken to date.

## **6 SUMMARY OF ENVIRONMENTAL IMPACT ASSESSMENT (EIA) PROCESS UNDERTAKEN**

---

The Scoping Phase was completed in August 2009 which consisted of:

- An issues-based, desk top investigation
- Identification of potential impacts which require more detailed assessment
- Investigation of the potential impacts relating to:
  - Biophysical environment
  - Socio-economic environment

Biophysical aspects that were assessed include:

- Avifauna – Birds
- Geology – Rocks/Soils
- Geohydrology – Groundwater
- Surface water – Rivers/Streams/Wetlands
- Agricultural Potential – Soil Productivity
- Biodiversity – Flora/Fauna (plants/animals)

Social and Socio-economic aspects that were assessed include:

- Archaeological / Cultural and Heritage resources
- Visual impact
- Socio-economic environment
- Tourism

The DEA accepted the Final Scoping Report and approved the Plan of Study for EIA in October 2009. The Impact Phase commenced in November 2009 and was put on hold to provide Eskom to attend to internal strategic matters and the Impact Phase commenced in August 2010.

A copy of the presentation is attached as Annexure B.

## **7 DISCUSSION SESSION AND QUESTIONS**

---

Please refer to Annexure C.

## **8 CLOSURE AND WAY FORWARD**

---

Nicolene Venter informed attendees that the draft PM minutes will be distributed to all attendees.

All present were thanked for their attendance and the valuable inputs received at the meeting. All were informed that the meeting would not be the only opportunity to submit comments on the proposed project. At any time throughout the EIA process they can submit comments and/or concerns.

The meeting was closed at 15h30.

**Annexure A**

**ATTENDANCE RECORD**

**ENVIRONMENTAL IMPACT ASSESSMENT (EIA) and ENVIRONMENTAL  
MANAGEMENT PROGRAMME FOR THE PROPOSED THYSPUNT  
TRANSMISSION LINES INTEGRATION PROJECT, EASTERN CAPE  
PROVINCE**


**Attendance Record  
FOCUS GROUP MEETING HELD WITH THE GAMTKWA KHOISAN COUNCIL  
(alphabetically according to Surname)  
IMPACT PHASE**

<b>TITLE</b>	<b>SURNAME</b>	<b>NAME or INITIALS</b>	<b>POSITION / MEMBERSHIP</b>
Mr	August	Ikrotđa	Member
Mnr	Baarmann	J	Raadslid
Mrs	Booyesen	Hester	Member: Arts & Culture
Mnr	Prince	Joseph	Lid
Mr	Reichert	Kobus	Representative
Dr	Swarts	N	Chairperson
Mrs	Swarts	Sarah	Member

## **Annexure B**

### **COPY OF PRESENTATION**






**EIA FOR THE PROPOSED ESKOM THYSPUNT TRANSMISSION LINES INTEGRATION PROJECT – EASTERN CAPE PROVINCE**

**GAMTKWA KHOISAN MEETING – HANKEY**

**28 JANUARY 2012**


Consulting Engineers • Project Managers • Environmental Consultants • Town and Regional Planners  
a professional team delivering creative project solutions



**Agenda**

- Welcome and Introduction – Nicolene Venter.
- Purpose of meeting – Nicolene Venter.
- Background to Gamtkwa Khoisan Council – Kobus Reichert
- Background to the proposed development Paul da Cruz.
- Discussion - all.
- Closure – Nicolene Venter.


Consulting Engineers • Project Managers • Environmental Consultants • Town and Regional Planners  
a professional team delivering creative project solutions



**Purpose of Meeting**

- To update / introduce the proposed Eskom Thyspunt Transmission Lines Integration Project to the Council.
- To understand the remit of the Council as it relates to KhoiSan Heritage and Cultural Matters
- To receive feedback from the Council on areas of cultural and heritage sensitivity within the corridors
- To agree a scope of work for the addendum to the heritage study


Consulting Engineers • Project Managers • Environmental Consultants • Town and Regional Planners  
a professional team delivering creative project solutions



**Conduct of Meeting**


- Switch off cell phones.
- Identify yourselves.
- Work through facilitator.
- Equity in participation.
- Language of choice.
- **Focus on issues relating to this EIA.**

Consulting Engineers • Project Managers • Environmental Consultants • Town and Regional Planners  
a professional team delivering creative project solutions



**INTRODUCTION TO GAMTKWA KHOISAN COUNCIL**

Consulting Engineers • Project Managers • Environmental Consultants • Town and Regional Planners  
a professional team delivering creative project solutions



**PROJECT OVERVIEW**

Consulting Engineers • Project Managers • Environmental Consultants • Town and Regional Planners  
a professional team delivering creative project solutions

## Overview of Project



- Who is the Applicant?
  - Eskom Transmission
- Who is the independent Environmental Consultant?
  - SIVEST
- Decision-making authority:
  - DEA
- Why do an EIA?
  - Legal requirement
  - To ensure environmental best practice

Consulting Engineers • Project Managers • Environmental Consultants • Town and Regional Planners  
a professional team delivering creative project solutions

## Overview of Project



- Why is the project necessary?
- 2 Drivers:
  - To link the transmission grid (Grassridge) with the proposed Thyspunt Nuclear Power Station (if approved & developed)
  - To supply the Nelson Mandela Bay Metropolitan Municipality with increased power via the proposed PE substation

Consulting Engineers • Project Managers • Environmental Consultants • Town and Regional Planners  
a professional team delivering creative project solutions

## Overview of Project



- What does the proposed development entail?
  - The installation of 5 Transmission power lines
  - The upgrading of existing substations (Grassridge and Dedisa)
  - The development of the proposed Port Elizabeth (PE) substation

Consulting Engineers • Project Managers • Environmental Consultants • Town and Regional Planners  
a professional team delivering creative project solutions

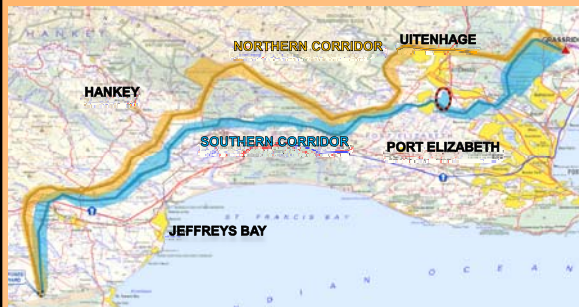
## Overview of Project



- **Proposed Assessment Corridors**
  - Northern and Southern Corridor
  - Note: 2 corridors not alternatives of each other
  - Servitude Width = 55m, therefore:
    - Northern Corridor lines = servitude of 165m
    - Southern Corridor lines = servitude of 110m

Consulting Engineers • Project Managers • Environmental Consultants • Town and Regional Planners  
a professional team delivering creative project solutions

## EIA Team preferred

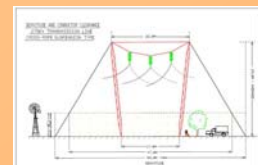
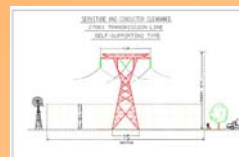


Consulting Engineers • Project Managers • Environmental Consultants • Town and Regional Planners  
a professional team delivering creative project solutions

## Overview of Project



### ● Tower Types



Consulting Engineers • Project Managers • Environmental Consultants • Town and Regional Planners  
a professional team delivering creative project solutions

## Environmental Aspects

SIVEST

Environmental Parameter	Phase: Scoping / EIA
Biodiversity (Flora & Fauna)	Scoping & EIA
Avifauna	Scoping & EIA
Geology and Geohydrology	Scoping & EIA
Surface Water	Scoping & EIA
Agricultural Potential	Scoping & EIA
Visual Environment	Scoping & EIA
Socio-economic Environment	Scoping & EIA
Heritage	Scoping & EIA
Palaeontology	EIA
Tourism	Scoping & EIA

Consulting Engineers • Project Managers • Environmental Consultants • Town and Regional Planners  
a professional team delivering creative project solutions

## Heritage

SIVEST



Consulting Engineers • Project Managers • Environmental Consultants • Town and Regional Planners  
a professional team delivering creative project solutions

## Impacts & Mitigation Measures

SIVEST

Environmental Parameter	Potential Impacts	Mitigation Measures
Heritage	<ul style="list-style-type: none"> <li>• Damage, degradation or physical disturbance to heritage sites</li> <li>• Damage to heritage artefacts in known areas of heritage resources</li> </ul>	<ul style="list-style-type: none"> <li>• Avoid known heritage sites</li> <li>• Known sites = no-go zones</li> <li>• <b>Walk down</b></li> <li>• Plan of action for unknown burial places if discovered</li> <li>• Span Kabeljous River Valley</li> </ul>

Consulting Engineers • Project Managers • Environmental Consultants • Town and Regional Planners  
a professional team delivering creative project solutions

## Addendum to Heritage Study

SIVEST

- Issue raised that Heritage Study does not adequately address KhoiSan and coastal heritage issues
- Eskom have agreed to commission an addendum to the Heritage Report to address this issue
- To be undertaken by **qualified coastal** heritage practitioner

Consulting Engineers • Project Managers • Environmental Consultants • Town and Regional Planners  
a professional team delivering creative project solutions

## Addendum to Heritage Study

SIVEST

- We would like to request the assistance of the Council in defining the Terms of Reference of the Study;
- Request for Council to feedback on:
  - Areas of cultural / heritage sensitivity in the Study Area
  - Other heritage-related matters related to the project

Consulting Engineers • Project Managers • Environmental Consultants • Town and Regional Planners  
a professional team delivering creative project solutions

## Contact Details

SIVEST

### SiVEST Environmental Division

PO Box 2921

Rivonia

2128

Nicolene Venter / Andrea Gibb/ Mabel Qinisile

☎ Phone: (011) 798 0600

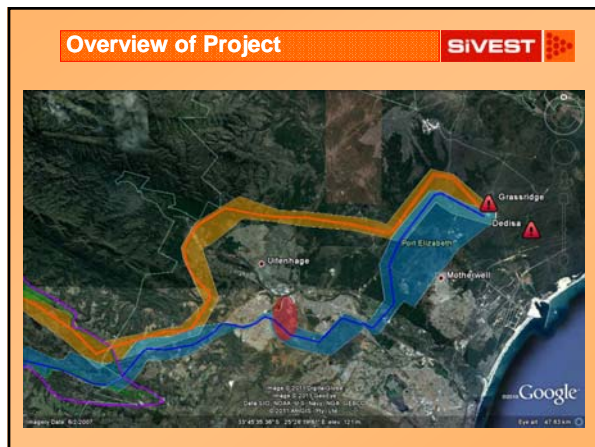
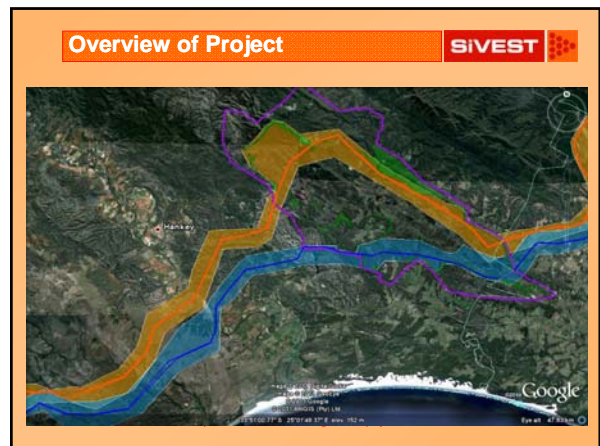
✉ Fax: (011) 803 7272

✉ E-mail: [nicolenev@sivest.co.za](mailto:nicolenev@sivest.co.za) /

[andreaq@sivest.co.za](mailto:andreaq@sivest.co.za) / [mabelq@sivest.co.za](mailto:mabelq@sivest.co.za)

🌐 Website [www.sivest.co.za](http://www.sivest.co.za)

Consulting Engineers • Project Managers • Environmental Consultants • Town and Regional Planners  
a professional team delivering creative project solutions



## **Annexure C**

### **DISCUSSION SESSION AND QUESTIONS**

**EIA: PROPOSED THYSPUNT TRANSMISSION LINES INTEGRATION PROJECT**

**FOCUS GROUP MEETING HELD WITH COMMITTEE MEMBERS OF THE  
GAMTKWA KHOISAN COUNCIL**

**SATURDAY 28 JANUARY 2012**

## DISCUSSION DOCUMENT

### INDEX

1.	Heritage Comments/Issues .....	3
2.	Social Related Comments .....	4
3.	EAI Team-Preferred Routing Related Comments .....	4
4.	Corridor Related Comments .....	5
5.	Communication/Consultation Related Comments .....	5
6.	Nuclear-1 Related Comments .....	6

### ATTACHED: MEETING PRESENTATION

### ABBREVIATIONS:

DEA:	Department of Environmental Affairs	Dx	Distribution	EA:	Environmental Authorisation
FEIR	Final Impact Assessment Report	HIA:	Heritage Impact Assessment	SoW	Scope of Work
ToR:	Terms of Reference	Tx:	Transmission		

Issue/Comment	Raised By	Response
<b>1. Heritage Comments/Issues</b>		
<p>It was enquired as to what would the procedure be should a heritage site i.e. a burial site be identified and it turns out to be impossible to move the tower, what is the legal procedure in such a situation.</p>	<p>Reichert, Kobus Representative: Gamtkwa Khoisan Council</p>	<p>Eskom will attempt every effort possible to avoid heritage sites and would rather move a tower than destroy such a site. If such a site cannot be avoided by moving the tower, SAHRA will be notified and consulted. <b>Paul da Cruz, SiVEST</b> Should such a situation occur, Eskom's construction team will stop the construction, cordon off the area, and contact SAHRA immediately. SAHRA, as the legal authority, will, after evaluating the situation request Eskom to apply for a permit to have the remains removed and/or relocated. This process will take place through a consultation process with i.e. the Council or the party concerned. <b>Lerato Mokgwatheng, Eskom</b></p>
<p>It was asked as to how many such cases were formally reported to SAHRA since 2000.</p>		<p>The information requested is not at hand and an enquiry would have to be made to both Eskom Tx and Eskom Dx. This information will be requested and included in the I&amp;RR that will form part of the FEIR. <b>Lerato Mokgwatheng, Eskom</b></p>
<p>The project team was informed that heritage sites would be found throughout the whole study area. There is a lot of oral history in the study area and a large amount of rock art has been found by mountain climbers. It is believed that iron age sites could also be found in the study area.</p>		<p>Comment noted. It was confirmed that SiVEST is in the process of drafting a ToR for the appointment of a Heritage Practitioner with Coastal Heritage experience to assess and write-up an addendum to the HIAR with the focus on the KhoiSan aspects. <b>Paul da Cruz, SiVEST</b></p>
<p>It was mentioned that in the presentation reference was made to 'local specialist'. It needs to be noted that no local specialist has been approached and the Council has put forward Johan Binneman as a local specialist to be approached and a SoW be forwarded to him.</p>		<p>It can be confirmed that Johan Binneman has been approached and the request to provide a quote for the undertaking of the addendum study was declined by him. This has been confirmed by e-mail to which Mr Reichert was copied. <b>Paul da Cruz, SiVEST</b></p>
<p>It was stated that the project must adhere to the minimum requirements as set out by SHARA for the HIA.</p>		<p>As previously mentioned, SiVEST is in the process of appointing a Coastal Archaeologist and the Terms of Reference will include consultation with local structures as the Council, 5km from costal to inland. It is also confirmed that the appointed Coastal Archaeologist must be accredited with SAHRA and ASACA. <b>Bernadette Solomon, Eskom</b></p>
<p>Reference was made to material from the United Nations Conference held on 25 August 2001 in terms of indigenous people in North America which was attended by the delegate. The view raised at the conference is supported by the Gamtkwa KhoiSan Council.</p>	<p>Swarts, Dr N Chairman: Gamtkwa Khoisan Council</p>	<p>United Nations Conference reference material noted.</p>



Issue/Comment	Raised By	Response
Upon request from the team to inform them of known sensitive heritage sites within the Tx power line study area to ensure that these sites are mapped, assessed and addressed by the Heritage Specialist, the delegate informed the team that the Council will not assist in this matter.		Refusal noted.
The project team was informed that the whole study area for the Tx power lines is littered with KhoiSan heritage.	Cynthia Council Member: Gamtkwa Khoisan Council	Comment noted and will be forwarded to the Heritage Specialist.
<b>2. Social Related Comments</b>		
<p>The project team was informed that the attendee is also the Traditional Healer.</p> <p>Dit was genoem dat dit wat Eskom wegneem kan nie weer terug gegee word nie en daar moet gekyk word na hoe mense voel.</p> <p><b>Translation:</b> It was mentioned that what Eskom is taking away cannot be replaced and they need to take people's feelings into consideration.</p>	!Krotōa, August Chief: Gamtkwa Khoisan	Information appreciated and noted and Eskom is listening to the concerns and feelings expressed by the Council. <b>Lerato Mokgwatheng, Eskom</b>
<p>Die projekspan was meegedeel dat die Raad bekommerd is oor dit wat hulle aan hul nageslag gaan nalaat en spreek die kommer uit oor hoe hulle aan hul nageslag moet verduidelik hoekom hierdie besluite geneem is. Dit was ook onder die projekspan se aandag gebring dat hy die 6de geslag is wat in die area woon en dit is met leedwese dat hy die moontlike verandering ervaar.</p> <p><b>Translation:</b> The project team was informed that the Council is concerned about what the inheritance of their descendants will be and expressed concern about how they will explain to their descendants the decisions taken by the Council. It was also brought to the attention of the team that he is the 6<sup>th</sup> generation living in the area and it is with regret that he experienced the possible change.</p>	Baartman, J Council Member, Gamtswa Khoisan Council	The team acknowledged the comment made.
<b>3. EAI Team-Preferred Routing Related Comments</b>		
<p>The team was informed that it is believed that through the consultation with landowners that the routing has been redrawn to suit the farmers.</p> <p>It was mentioned also mentioned that the study area is part of the Garden Route.</p>	Swarts, Dr N Chairman: Gamtkwa Khoisan Council	The Application for EA is still for a <b>corridor</b> and not proposed power line routings/alignments. As mentioned during the presentation the EIA Team-Preferred Routing was introduced after receiving request from a number of stakeholders as it was mentioned that it would enable them to add more comments. Comments are not only obtained and sourced from <i>directly</i> affected landowners whose property(ies) falls within the corridors, but also from surrounding landowners, communities and Government Officials. <b>Paul da Cruz, SiVEST</b>

Issue/Comment	Raised By	Response
<b>4. Corridor Related Comments</b>		
It was enquired whether Eskom can confirm that the corridors are the <b>only</b> areas of possible impact and would not change when a route is negotiated.	Reichert, Kobus Representative: Gamtkwa Khoisan Council	With reference to the presentation and a previous response, the Application for an EA is for the corridors and the corridors can still change through consultation. However, should an EA be granted for the corridors, Eskom cannot negotiate a routing outside the corridors. Should there be a serious technical constraint in an area within the corridors and Eskom needs to go outside the EA approved corridors, then Eskom will have to submit an Amendment Application to the DEA and the required BA/EIA process, as decided by DEA, will have to be followed. <b>Paul da Cruz, SiVEST</b>
<b>5. Communication/Consultation Related Comments</b>		
The question was raised as to whether only landowners' concerns and comments are being taken into consideration.	Reichert, Kobus Representative: Gamtkwa Khoisan Council	No, all I&APs and stakeholders, such as the Gamtkwa KhoiSan Council, are taken into consideration. <b>Paul da Cruz: SiVEST</b>
The project team was informed that the Council is a member of the Thyspunt Alliance, and if the Council have known that Eskom's legal representative would've been present, the Council would have invited Mr Cormac Cullinan, their legal representative to the meeting. SiVEST was informed that, in future, it would be appreciated if the Council are informed of which project team members will be attending the meeting.		As the EIA process is an legal independent process, the presence of Eskom's legal representative is purely to observe as at the end of the day the infrastructure would be Eskom's responsibility to operate and maintained. <b>Bernadette Solomon, Eskom</b> Request noted and will be attended to should another meeting be required. <b>Nicolene Venter, SiVEST</b>
It was enquired as to why the Heritage Specialist, Mr Johnny van Schalkwyk, is not present at the meeting.		The Heritage Specialist has declined any further involvement in the project as he believes that his professional integrity as a Heritage Specialist with years of experience is constantly being questioned. SiVEST cannot force their specialist to attend meetings. <b>Paul da Cruz, SiVEST</b>
The project team was informed that "Karin" (Arcus GIBB Heritage Specialist) refused to consult the Elderly Board and this approach is not conducive as the Council's inputs are not recorded or taken into consideration. It is believed that the Heritage Specialists work with 'heritage' but not the people who the heritage belongs to.		Comment noted. Once SiVEST appoint a coastal experienced Heritage Specialist, the specialist's SoW will include one-on-one consultation with the Council to ensure that all heritage knowledge from the Council is recorded and addressed in the HIA Report. <b>Paul da Cruz, SiVEST</b>
It was requested that copies of SAHRA's communication be forwarded.		Copies of SAHRA's correspondence received to date will be distributed with the draft minutes of the meeting. <b>Nicolene Venter, SiVEST</b>
A brief background to the official status of the KhoiSan Council been presented as summarised:	Swarts, Dr N Chairman: Gamtkwa Khoisan Council	Information noted and appreciated.

Issue/Comment	Raised By	Response
<ul style="list-style-type: none"> <li>1994: with the establishment of the House of Traditional Leaders, the KhoiSan was excluded</li> <li>Until now the KhoiSan has no recognition</li> <li>Since the inception of the National KhoiSan Council, the situation has changed</li> <li>In the study area, there are two (2) KhoiSan groups <ul style="list-style-type: none"> <li>The registered MPO registered as Section 21 Company. As per the First Nation, a Leader can be removed in terms of the Constitution</li> <li>The unofficial KhoiSan group represented by Chief Williams</li> </ul> </li> </ul>		
It was commented that SiVEST is playing the two Gamakwa groups against one another and SiVEST will come second as SiVEST has been tested.	Cynthia Council Member: Gamakwa Khoisan Council	No groups, stakeholders or I&APs are played against one another. SiVEST follows an open, transparent and robust consultation process and all parties identified either by SiVEST or by referral are included in the consultation process. <b>Nicolene Venter, SiVEST</b>
It was enquired as to whether SiVEST is following the Equator Principles as set out by the World Bank Policy.	Swarts, Dr N Chairman: Gamakwa Khoisan Council	The Equator Principle does not apply to this proposed project as international funding is not sourced as is the situation with the Nuclear-1 Project and therefore the Equator Principles are not followed. However, it can be noted that the EIA process followed to date aligns with the Equator Principles. <b>Paul da Cruz, SiVEST</b>
The project team was thanked for securing the meeting and presenting the project to the Gamakwa KhoiSan Council.		Comment noted.
It was enquired as to why SiVEST is only now addressing the Council as the project started in 2008.	Swarts, Sarah Council Member: Gamakwa Khoisan Council	The Council has been part of the consultation process through the registration and participation of Mr Reichert. It was on his request that the team is now meeting on a formal platform with the Council. <b>Nicolene Venter, SiVEST</b>
<b>6. Nuclear-1 Related Comments</b>		
The project team was informed that two to three years ago Eskom was informed of the document drafted after the Wisconsin Summit that racism still exists when environmental studies are conducted where indigenous people are being ignored. He would like to repeat the question raised as to why is the Nuclear Power Station planned in the back yard of the KhoiSan indigenous people. It needs to be noted that the KhoiSan people are totally oppose to the Nuclear Power Station.	Swarts, Dr N Chairman: Gamakwa Khoisan Council	As the Nuclear-1 Project is not part of SiVEST's SoW the comment is noted and will be forwarded to Arcus GiBB, the independent environmental consultants for Nuclear-1. <b>Paul da Cruz, SiVEST</b>
It was stated that the GamtKwa KhoiSan Council has First Nation Status. If the situation of the Nuclear Power site continues at the selected site, it will destroy the heritage of the KhoiSan people. It is the wrong site and the site was chosen during the apartheid time. No respect is shown to the indigenous people.		