

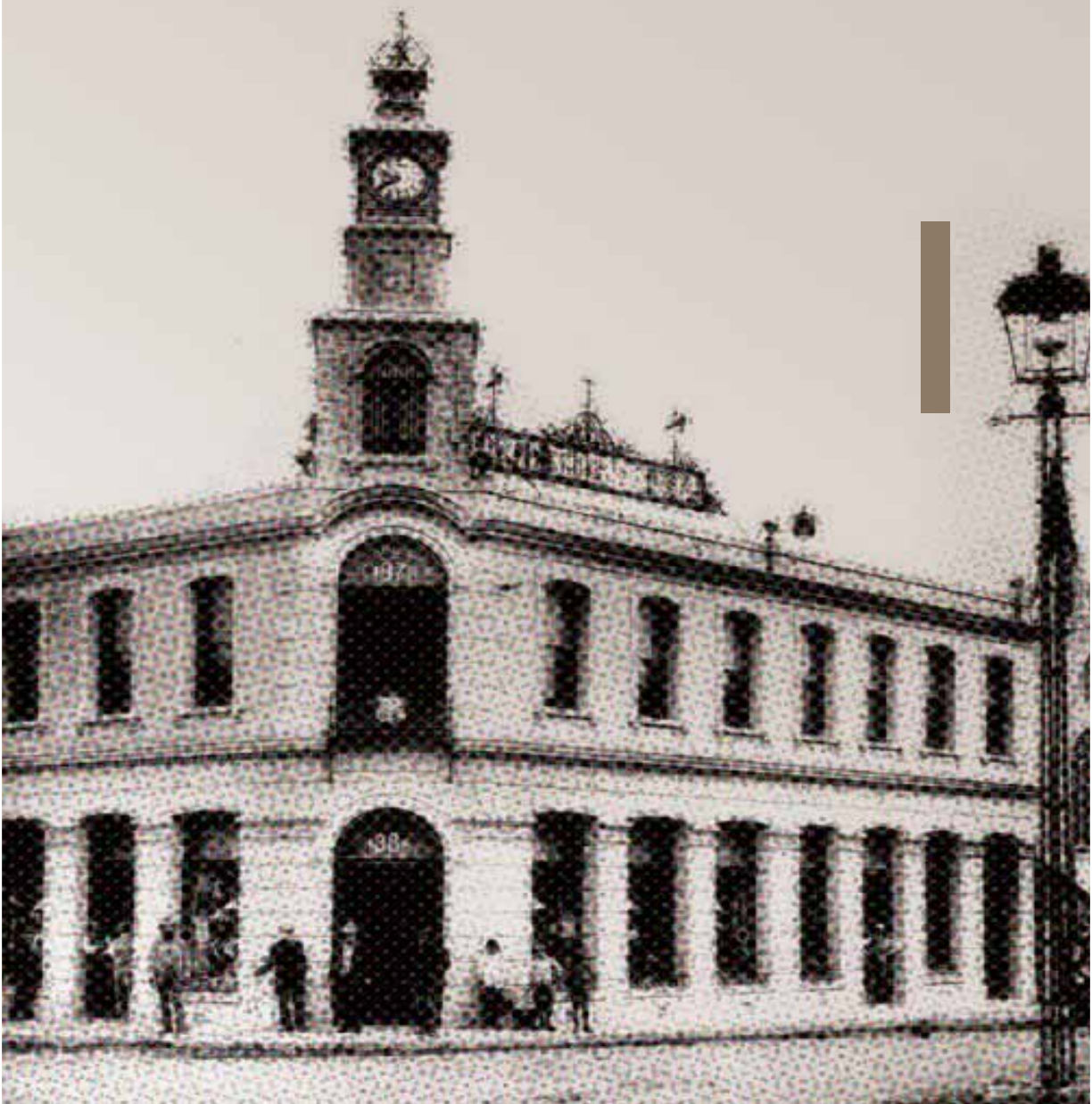


Shift performance,
grow sustainably

Foundation Report
for the year ended 31 March 2013



Contents



Introduction	2
Eskom Development Foundation NPC	3
Overview	4
Target groups	4
Sustainability	4
Foundation-approved funding	4
Programmes	5
Performance at a glance	5
Enterprise development	6
Eskom contractor academy	6
Business incubators	8
Eskom business investment competition	10
Eskom Simama Ranta enterprise education high school competition	10
Business Opportunities and Franchise Expo	12
Education	13
Eskom energy and sustainability programme	13
Renewable energy projects	16
Rural infrastructure development and food security	18
Early childhood development	21
Mathematics, science and technology programme	23
Further education and training colleges programme	25
Health programmes: support towards health clinics	26
Philanthropy and welfare	28
Eskom Guardian i-Volunteer Programme	29
Eskom Development Foundation – GiV Winter Drive 2012	29
Eskom employees share Mandela Day spirit	30
Tables and graphs	32
Beneficiaries	34

Introduction

Eskom Holdings, a state-owned company, is mandated to “provide sustainable electricity solutions to grow the economy and improve the quality of life of the people of South Africa and the region”.

Eskom's objectives are not limited to commercial concerns. Its performance is also measured by the overall value it adds to the lives of the South African public. Eskom's developmental responsibilities range from building and maintaining power plants and networks to supplying households, schools and factories with electricity, to supporting local industries and stimulating skills and job creation. Eskom is also involved in creating a foundation on which South Africa can grow, helping to transform the lives of the large percentage of the population that lives in poverty.



Eskom Development Foundation NPC

The Eskom Development Foundation NPC ("Foundation") is responsible for the co-ordination and execution of Eskom's corporate social investment (CSI) strategy in support of Eskom's business imperatives. This strategy supports socio-economic development programmes by targeting primarily the communities where Eskom operates. In line with this, the Foundation considers grants and donations for registered non-profit organisations. Focus areas for the Foundation include education, health, energy and the environment, enterprise development and community development.

Support to small and medium enterprises (SMEs) is provided through the following:

- Business Opportunities and Franchise Expo
- Eskom business investment competition
- Enterprise Incubator Support Programme
- Eskom contractor academy programme

Education programmes include the following:

- Upgrading rural schools
- Early childhood development
- Support programmes for mathematics, science and computer laboratories
- Tertiary Education Support Programme
- Further Education and Training College (FET) Support Programme
- Energy and Sustainability Education Programme

Health support programmes include the following:

- Providing medical equipment
- Providing mobile primary health-care facilities to rural communities

Community development and welfare programmes include the following:

- Funding specific needs related to training, equipment or materials for hospices, homes for the aged, orphanages, centres for people with disabilities and disaster relief
- Supporting the employee volunteer programme
- Supporting charities through an annual "Joy & Jewels" charity fund-raising event

The Foundation supports rural communities in developing sustainable livelihoods by funding skills development, equipment and materials for agricultural projects.

Energy and environmental management programmes include the Eskom energy and sustainability programme, undertaken in schools across South Africa in partnership with the Wildlife and Environment Society of South Africa.

Overview

The Foundation operates in the nine provinces of South Africa. Economic and social development managers and advisers employed by Eskom are based in each province and represent the Foundation.

Target groups

Grants and donations are considered for non-profit organisations involved in philanthropic work for the development and benefit of the disadvantaged, as well as for small and medium enterprises. The primary target groups for grants and donations are women, youths and children, as well as people with disabilities.

Sustainability

Sustainability is a vital element of Eskom's CSI interventions. It is considered in developing the Foundation's strategy and also at project implementation level.

In terms of the Foundation's strategy:

- Support is provided for education, from the early childhood development phase onwards. This is a long-term strategy, aimed

at ultimately contributing to an improved pipeline of Grade 12 learners with good results in mathematics, physical science and language, helping them to study in the engineering and technical disciplines with a view to meet the human resources needs of Eskom and South Africa

- Support provided to further education and training colleges contributes not only to improving the employability of the youth, but also to creating a future pipeline from which Eskom and other industries can draw technical skills
- Support provided to small business through skills development and marketing support assists these businesses in growing and providing further employment opportunities; and contributes to creating a pool of small and medium enterprises and black women-owned suppliers from which Eskom and other large corporate players can procure goods and services

Foundation-approved funding

	2012/2013		2011/2012		2010/2011	
	Number of projects	Rm	Number of projects	Rm	Number of projects	Rm
Grants for flagship and national programmes and economic and social sector projects	47	138.1	21	50.1	26	39.8
Donations to registered, non-profit organisations for philanthropic projects	290	44.9	233	20.6	224	15.7
Rural development	6	11.3	10	17.2	4	6.8
Total	343	194.3^{RA}	264	87.9^{RA}	254	62.3^{RA}

Notes:

RA Reasonable assurance provided by the independent assurance provider.

Programmes

The Foundation has several flagship programmes. It also supports a number of national CSI programmes that are deemed important for the socio-economic development of the South African landscape.

Donations are further considered for philanthropic and welfare causes involving registered non-profit organisations. The donation of assets is facilitated and accounted for on behalf of Eskom and its subsidiaries.

Support to economic projects for small and medium enterprises (SMEs) will continue, providing business skills, capacity building and mentoring through business incubators, the Eskom's contractor academy programme

and the annual Eskom business investment competition and Business Opportunities and Franchise Expo.

Support to social projects includes support to philanthropic/welfare organisations, health organisation, support to early childhood development (ECD) centres, mathematics and science related initiatives for educators and learners in schools and further education and training colleges (FETs)

Performance at a glance

During the year, the Foundation funded 343 projects to the value of R194.3 million with 652 347 beneficiaries (2011/12: 264 projects for R87.9 million and 531 762 beneficiaries).

Programme	2012/2013			2011/2012			2010/2011		
	Projects	Approved Rm	Number of beneficiaries	Projects	Approved Rm	Number of beneficiaries	Projects	Approved Rm	Number of beneficiaries
Eskom contractor academy ¹	9	19.0	225	–	–	–	–	–	–
Business incubators	7	29.1	3 188	5	3.4	229	–	–	–
Enterprise development	–	–	–	3	1.1	26	4	2.0	1 241
Eskom business investment competition	1	6.0	26	1	6.0	195	1	4.2	190
Business Opportunities and Franchise Expo	1	6.0	36	1	5.6	56	1	4.1	51
Eskom energy and sustainability programme	1	4.9	227 154	1	4.6	125 894	1	3.7	154 141
Infrastructure development	6	11.3	4 507	8	17.2	12 271	4	6.8	831
Education ²	14	38.7	15 024	4	18.5	1 935	13	16.8	4 486
FET colleges ³	10	17.2	6 986	4	6.2	2 918	5	5.0	4 22
Food security	2	0.3	–	4	4.7	480	–	–	–
Health	2	16.8	28 080	–	–	–	–	–	–
Philanthropy and welfare	290	44.9	367 121	233	20.6	387 758	225	19.7	138 815
Total	343	194.3	652 347	264	87.9	531 762	254	62.3	303 983

Notes:

1. Contractor Academies were established by the Eskom Foundation but were funded by Eskom Distribution division.
2. Education projects managed by Eskom Human Resources division included.
3. Further education and training colleges.

Enterprise development

Since the inception of corporate social investment at Eskom, one of its key focus areas has been to give small and medium enterprises (SMEs) the capacity to enable them to develop, grow and compete in the formal economy. A lack of management and business skills negatively affects the ability of SMEs to grow and become sustainable. Many enterprises have difficulties with accessing finance because their business models are flawed, and they often lack business management skills: the Foundation seeks to address this challenge.

The Foundation aspires to make a significant contribution to small business development with a view to sustainability and growth. This has resulted in a number of key strategic CSI programmes that focus on enterprise development with substantial financial commitments, long-term relationships and clear exit strategies. This is done through the Eskom Contractor Academy, the Business Investment Competition, as well as by creating a platform for black-owned and black women-owned enterprises to participate in the annual Business Opportunities and Franchise Expo and by supporting business incubators.

Eskom contractor academy

The Eskom contractor academy is a programme devised to develop and empower emerging contractors and suppliers, as part of Eskom's contribution to skills development, job creation and sustainability. The programme for business owners consists of eight modules where students attend a study school for one week per month over an eight-month period.

The curriculum includes business skills and finance, project management, people management, supply chain management, as well as safety, health, the environment and quality (SHEQ).

On completion of the theoretical training, students undergo practical training at a training facility for a period of 123 days.

The objective of the academy is to equip emerging contractors and suppliers (especially black women-owned and youth-owned companies) with the entrepreneurial, legislative, management, leadership and technical skills needed to run a business successfully. The programme is facilitated by Edupark, a non-profit company of the University of Limpopo. Students who successfully complete the programme are awarded a certificate by the University of Limpopo.

During the period under review, funding was approved for the implementation of nine academies across the country.



MS Quality Services, Lephalale, Limpopo



MS Quality Services, Lephalale

Sarina Malatji participated in the Eskom Contractor Training Academy in 2012/13 and completed her business owner's training with an average of 91%. She was the top student for the year.

Malatji is the owner of MS Quality Services and is based in Lephalale in Limpopo near the Medupi power station. MS Quality Services is a 100% black women-owned (BWO) and youth-owned company that started operating in April 2011.

The enterprise provides safety, health, environment and quality (SHEQ) consulting services as well as cleaning chemicals and cleaning services to a broad range of public sector and private sector clients. It also provides transportation for children in the area. In order to deliver world-class services and products, MS Quality Services has implemented the ISO 9001:2008 Management System in the organisation.

Under SHEQ consulting, the company provides the following:

- Safety, health, environment and quality (SHEQ) services
- Implementation of OSHAS 18001, ISO 14001 and ISO 9001 standards
- SHEQ auditing
- Environmental impact assessment (EIA)
- SHEQ training

Her vision is to become the leading provider of services in the market and this is supported by the values of service excellence, honesty and integrity, as well as ownership and accountability.

The company's client-focused strategy is governed by the following values:

- An organisational culture that allows creativity and innovation
- Continuous commitment
- Employee empowerment
- Integrity – promoting trustworthiness and transparency

Since 2011 the company has created 19 jobs in the Waterberg region and 11 black women have been trained in basic domestic cleaning and child-minding.

She plans to extend her business to include a training centre for cleaning, cooking and sewing and also a crèche for children.

Enterprise development *continued*

Business incubators

Support of business incubators is one of the key programmes incorporated in the Foundation's CSI strategy. Business incubators are a tried and tested model for business development and are established under the Small Enterprise Development Agency's (SEDA) technology programme. With measurable key performance indicators and success stories, these business incubators address the need for an integrated approach to ensure interventions that are sustainable.

Business incubators are the big brothers of start-up businesses and help these small businesses grow and thrive. SEDA currently has 26 models in South Africa under its SEDA technology programme (STP) banner.

Though the service offering differs among the incubators, the most common form is to provide technical and administrative training, seed capital, inexpensive infrastructure such as office space and administrative and IT services, which are shared by the participants in the incubator.

There was an opportunity for the Foundation to partner with the SEDA technology programme (STP) in its incubator initiatives to reach and support small enterprises in the sectors that are aligned with the Foundation's CSI focus of supporting capacity building in the manufacturing, agricultural and services sectors.

To date, six incubators have been supported since the collaboration with SEDA began.



Chemim Manufacturing Incubator in Esat London, Eastern Cape





Chemin Manufacturing Incubator – East London, Eastern Cape

For ten years, the East London branch of the South African Chemical Incubator operated at reduced capacity and was unable to assist aspiring entrepreneurs to gain entry to the manufacturing sector.

Incubatees who produced goods such as fabric softener, hand lotion, dishwashing liquid, hair conditioner and detergents had to manufacture their products from their homes because Chemin did not have the necessary equipment. This naturally affected the efficacy of the final products and limited the number of batches that could be manufactured at a time.

But this was all before the South African Chemical Incubator (Chemin) became a beneficiary of the Eskom Development Foundation.

The CEO of the Eskom Development Foundation, Haylene Liberty, said: “Support of small businesses from previously disadvantaged groups is one of the Foundation’s key focus areas. We collaborated with the Small Enterprise Development Agency (SEDA) in providing equipment for a number of established incubators across the country to drive job creation and the growth of small businesses.”

The Foundation provided funding for machinery, including mixing tanks, powder soap makers, analytical equipment, a soap-bar maker and multipurpose industrial printers that Chemin desperately needed.

The mixing tanks also purify the water used and have been one of the most significant benefits to the quality of the business incubatees’ products.

“What is problematic about using tap water [when producing chemical products] is it results in quality variation, making the output different every time and compromising the consistency and efficacy. Since the machines were set up, our customers have been able to increase their revenues by leaps and bounds, as the equipment has overcome most, if not all, of their challenges. They now save time, are able to make bigger batches and have increased their product ranges and overall revenue,” said Senzo Xulu, Chemin’s East London centre manager.

Chemin currently has over 20 local manufacturing incubatees, one of whom is thriving and supplying household cleaning products at more competitive prices to its local community. Because of the new equipment, the Savela Sonke Kude Co-operative has been able to reduce its overall incubation time and is now focused on building its corporate identity to enable it to supply its products to government departments and chain stores.

Enterprise development *continued*

Eskom business investment competition

The Eskom business investment competition aims to acknowledge, honour, reward and develop South African owners of small/medium enterprises as part of the Foundation's ongoing business support programme. The competition is open to SMEs that are black-owned that have been in existence for at least 24 months.

The competition reaffirms that the entrepreneurial spirit is thriving in this country, as many of the small business owners in this competition have risen above their circumstances, many striving against adversity, to realise their dream of running their own business. In so doing, they have not only succeeded in generating an income for their families, but have also created opportunities for people in their communities.

The calibre of the entrants in the 2012 competition was impressive. With the amazing diversity of entrants from around the country, offering innovative products and services, selecting the finalists was a challenging task.

All finalists working in the agriculture, manufacturing or trade/services sectors, as part of their prize, exhibited at the Business Opportunities and Franchise Expo, which provided an invaluable platform for marketing their businesses and interacting with prominent business leaders and representatives from a number of blue-chip companies.

In addition to this marketing opportunity, the Foundation presented the finalists with energy-efficient products, and the winners received an expert assessment of their businesses and plans to assist with making their enterprises energy-efficient.

This competition serves to acknowledge their achievements and assist them to develop, grow their capacity and impart skills. For many of the 2012 winners, the prize money could mean the fruition of plans to expand their businesses.

The 2012 winners and runners-up each received R100 000 and R25 000, respectively to improve their businesses.

In the agriculture sector, the winner was Tlamelo Fresh Produce near Mafikeng in the North West, and the runner-up was the Kopano Disabled Primary Co-operative near Polokwane in Limpopo. In the manufacturing sector, the winner was Elegant Line Chemicals in Durban, KwaZulu-Natal and the runner-up Eish Hade Fashion in Johannesburg, Gauteng. The trade/services sector presented ArchWorXS in Port Elizabeth, Eastern Cape with the winning trophy, and this year the entries were so impressive that there were two runners-up, Sigma International from Durban, KwaZulu-Natal and Pimp My Book from Cape Town, Western Cape.



BIC finalists, awards ceremony

Eskom Simama Ranta enterprise education high school competition

The Eskom Simama Ranta competition is a category of the Business Investment Competition open to high school learners

who have enterprise clubs. The aim of the competition is to highlight the variety of comprehensive, high-quality entrepreneurship projects in South African schools and to showcase the winning schools as leaders in enterprise education. “Simama Ranta” means “to empower the South African economy” through entrepreneurship education, and the competition aims to identify, honour and showcase the South African secondary schools that are exemplary in entrepreneurship education.

This school programme promotes the South African government’s economic development policy, which encourages learners to consider entrepreneurship as a career choice – and become creators of jobs rather than only job seekers.

The Sakhelwe high school in Ezakheni, KwaZulu-Natal scooped the R25 000 cash prize for the best school in the 2012 schools competition. The Sakhelwe high school club is one of the biggest with 1 380 members split into 23 teams, which run eight different projects, including gardening, baking, a tuck shop, beadwork/ knitting, a car wash, an outreach project, a basic computer skills project and a braiding project.

The other eight finalists – Dalubuhle high school (Alice, Eastern Cape), Selelekela senior secondary school (Phuthaditjhaba, Free State), Sehopotso senior secondary school (Sebokeng, Gauteng), Mudimeli secondary school (Nzhelele, Limpopo), Piet Retief combined school (Piet Retief, Mpumalanga), Emangmogo comprehensive school (Galeshewe, Northern Cape), Huhudi high school (Ganyesa, North West) and Goodwood college (Western Cape) – each received R10 000.



Finalist from schools in the Simana Ranta High School Competition



The winning team from Sakhelwe high school



Simana Ranta high school learners and educators

Enterprise development *continued*



Simana Ranta high school learners at the Expo

Business Opportunities and Franchise Expo

The 2012 Business and Opportunities and Franchise Expo (BOFE) drew entrepreneurs and influential business owners from across the country. This platform enabled aspirant entrepreneurs, suppliers, customers, investors and funders to come together and explore a variety of investment prospects and franchise options, enhanced by workshop programmes and extensive networking opportunities.

The 2012 Expo is a joint venture between exhibition organiser specialists Thebe Exhibitions and Projects and the Eskom Foundation, with Standard Bank featuring as a silver sponsor. The Expo's aim is to develop and promote opportunities for entrepreneurial businesses that want to grow, diversify and succeed.

Held at the Coca-Cola Dome in Northriding, Johannesburg from 13 to 16 September 2012, hundreds of exhibitors had the opportunity to showcase their business products and services and build robust relationships. The Expo features a small business seminar, the business buzz zone and interactive demonstration areas.

The Expo is an ideal platform to stimulate business growth and motivate current and aspiring entrepreneurs through direct interaction with some of South Africa's most

influential speakers, who hosted informative seminars and workshops. The Expo offered exhibitors a highly targeted visitor base as more than 7 000 visitors attended the Expo, searching for business and franchise opportunities, to procure business from the participating SMEs and discover the power of networking.

Research showed that 75% of the visitors were deeply interested in buying a business or franchise, 70% said they would return in 2013, and 94% said they would recommend the show to colleagues or friends.

The Expo also showcased the unique successes of the winners of the Eskom Foundation's 2012 Business Investment Competition, and brought together SMEs wanting to grow their businesses, government and business procurement managers looking to deepen and expand their BEE strategies, business support providers, financial institutions and other funders – all with the common goal of delivering measurable outcomes of growth and sustainable job creation in the entrepreneurial sector.

These objectives are significant, considering that South Africa's economy is working hard to recover, as are the economies in most countries, and all have been hard hit by job losses. Through the Expo, local entrepreneurs can seek support and encouragement, as they are integral to the country's recovery and growth, and platforms such as the Expo play a valuable role.



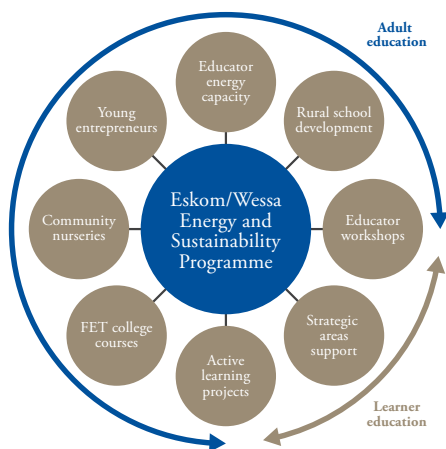
Stands at the 2012 BOFE at the Coca-Cola Dome

Education

Eskom energy and sustainability programme

The Eskom energy and sustainability (E&S) programme ran by NPO Wildlife and Environment Society of South Africa (WESSA) has completed its 17th year of service, supporting educators, learners and communities in promoting a sustainable lifestyle through contextual energy learning.

In recent years, the programme has undertaken support in a number of programme sections, many of which focus specifically on adult learning and support and which contribute to community development. The eight sections of the E&S programme are detailed in the diagram.



The programme is conducted nationally with regional co-ordinators supporting schools and communities in the following areas:

Western Cape (Cape Town, Mossel Bay regions, Vredendal regions, Atlantis regions)

Southern Cape (George, Plettenberg Bay)

Eastern Cape (East London, Queenstown, all areas of the former Transkei)

KwaZulu-Natal (Durban, Ixopo, Pietermaritzburg, Ladysmith regions; Drakensberg regions)

Free State (all regions)

Mpumalanga Highveld (Emalaheni regions, Middelburg regions, Steelpoort regions, Balfour regions, Standerton regions)

Mpumalanga Lowveld (Nelspruit, White River)

Limpopo (Lephalale region)

Gauteng (Johannesburg, Soweto, Alexandra)

Active learning projects

The oldest section of the programme, active learning projects, supports groups of young people to identify contextual environmental issues and to research, plan, take action, monitor and evaluate their projects. It is this section that produces many of the Eskom eta Award entries, and it is this section that assists the programme for strong visibility and for national and international award submissions.

Educator workshops

Energy misinformation is always a challenge, particularly in schools and for educators. This section assists educators to understand energy issues. The workshops, given in five specific provinces, also support educators to understand the energy components that relate to their teaching curriculums. The five specific provinces are KwaZulu-Natal, the Eastern Cape, Free State, Limpopo and Mpumalanga.

Strategic areas

These are areas that are close to Eskom plant and its new-build sites, and are designed to support communities and schools and contribute to supporting an Eskom presence in these regions. The strategic areas are the Mpumalanga Highveld (five strategic regions), KwaZulu-Natal escarpment (two strategic regions), Limpopo (one strategic region) and Western Cape (three strategic regions). Five schools in each of the strategic regions are supported, forming a total of 55 schools.

Education *continued*

Educator accredited training

This section supports educators at E&S schools to obtain additional credits for their professional development and is designed to broaden the environmental perspectives of their teaching and to support energy learning programmes at schools.

Entrepreneurial projects

This section is small in comparison to others that E&S supports, but contributes towards community development with SME development.

Edible plant networks

One of the well-supported initiatives, the Edible plant networks (EPNs), assists the programme to make the leap from school to community by establishing large-scale school and community food gardens. There are seven EPNs nationwide, consisting of a community greenhouse/shade-house for plant propagation, vegetable beds and orchards.



Climate change courses

The climate change course is a three-day course given to young adults who are about to enter the workplace. The course material offers instruction in the science of climate change, but, what is more important, focuses on the environmental impact individual persons have each day in their work tasks and in their homes. The course brings the learner to an understanding that many of these impacts can be minimised.

Rural school development

The Eskom Development Foundation has assisted many rural schools in the past. This section supports these schools on a regular basis, offering curriculum support and other environmental assistance. The E&S Programme therefore, "holds" the Eskom and WESSA presence at these schools through additional support.



Top left and bottom: Learners at Three Crowns primary school, Lady Frere, Eastern Cape

Top and bottom: Learners at Shri Vishnu primary school, working in their greenhouse and nursery Pietermaritzburg, KwaZulu-Natal



Active learning project

The following gives a glimpse of some of the many projects that were supported in this reporting year:

Eastern Cape – multi-partner development of a learning box of “electrical goodies”, which was used as a research project to gain an understanding of how young people responded to, or took up knowledge about, energy. This project is ongoing and is a partnership between the Indwe high school and the University of Lower Saxony, Germany.

Mpumalanga – Hhanyano high school. The school grounds resembled a desert, but have now been transformed by an indoor planting area, a school orchard, peripheral hedge planting, a medicinal herb garden and a green parking area.

Lephalale – water conservation at the Tielelo secondary school (Marapong). As there is very little water in the area, and huge demands are made on the water supplies (due to an ever-increasing population and migration to the area for work/ construction and building work), E&S co-ordinators and the school have embarked on a water conservation project. Equipment has been purchased to provide the school with a rainwater harvesting tank, which will greatly assist in times of water scarcity. In addition, the learners involved in this project have been supported to develop a portfolio to be submitted for the South African youth water prize, co-ordinated by the Department of Water Affairs.



Learners at Shri Vishnu primary school, Pietermaritzburg, KwaZulu-Natal, take an active interest in the well-being of their garden

Education *continued*

Renewable energy projects

Eskom has focused on various alternative energy initiatives to provide power. In addition, the use of alternative energy in areas or places where no electricity is available or where the cost of installation would be too high might be the answer to reducing the load from the national grid.

Eskom's initiatives are geared towards getting South Africans to think about their power consumption and to look for opportunities to help communities through alternative energy.

The Foundation has also begun rolling out socio-economic development programmes that support and enhance the use of alternative energy sources.

Melani biomass gasifier pilot project

Eskom's Research and Development department and the University of Fort Hare initiated a biomass gasification project in the Schenk enterprise at Melani village, Nkonkobe municipality. The aim of this pilot project is to use a biomass renewable energy system to generate sufficient electricity to support the community's economic development initiatives, in this case, a community bakery, by using the excess biomass (sawdust) from the saw-mill.

In addition, the project is expected to enhance the research capacity of the Faculty of Science and Agriculture for students at the University of Fort Hare. The university's involvement will also enhance the exit learning outcomes of the graduates in science and technology, particularly in the Eastern Cape.

The gasifier project at Melani village is the first of its kind in the country. The Foundation funded the set-up of the community bakery that uses electricity generated from biomass. The bakery project was fully commissioned in 2012.



Yellowwoods independant school, Porth Elizabeth, Eastern Cape



The learners from Shri Vishnu primary school, Pietermaritzburg, KwaZulu-Natal built a fully functional solar cooker using old and unwanted compact discs to cut down on electricity consumption.

Education *continued*

Rural infrastructure development and food security

In 2001, Eskom undertook to support government's Integrated Sustainable Rural Development Programme (ISRDP). Since then, Eskom has continued supporting the programme through the renovation and construction of rural schools, the upgrading of community multi-purpose centres and supporting the agricultural food security initiatives. Support for agriculture projects entails empowering rural communities by enhancing their agricultural skills and by providing agricultural resources.

In the period under review, the Foundation upgraded school infrastructure in the Eastern Cape and KwaZulu-Natal. Six of these schools were completed. The Foundation's assistance

in this regard provided for 4 507 beneficiaries (learners and educators), (2013: six projects with 4 507 beneficiaries; 2012: eight projects with 12 271 beneficiaries; 2011: four projects with 831 beneficiaries).

To assist with the eradication of poverty, the Foundation has also implemented agricultural food security programme in four different communities in the Eastern Cape, KwaZulu-Natal and North West on a pilot-project basis.

In addition, 57 schools were identified in rural areas in the Eastern Cape, KwaZulu-Natal, Limpopo, Mpumalanga and North West. The magnitude of the needs varies but all the infrastructure requirements are similar. The Foundation is currently doing project feasibility studies at these schools.

Mdlazi primary school

Before the visitors could conduct an interview with the principal of the Mdlazi primary school in Boyiboyi, Portia Pearl Ngesi, she asked whether she could fetch the school's "bible" – a beautiful hardcover book that is kept in one of the lockers.

The first entry had been written by the founding principal in 1962, on the first day of the opening of the school in January that year. This is the same book that Ms Ngesi is still using to record all school visits and activities 50 years on.

Not only did Ngesi bring the "bible" to the interview, but she also brought the school file with many pictures of special events at the school, newspaper articles about the school's achievements and a pile of framed certificates of her personal and the school's achievements. "This will help me collect my thoughts and remember everything," she said, as she put more memorabilia on the table in her office.

The Mdlazi primary school is one of the beneficiaries of the Eskom Foundation's Rural Development Programme. The Foundation has committed some R6 million to building an administration block, renovating the classrooms and the kitchen and converting the current hall into a Grade R class with separate ablution facilities.

The Foundation's project managers visited the school in January 2012 as part of their site visits to all the projects that the unit is funding. Work had just begun and, according to the site foreman, Linda Khwela, the project would be completed in September.

Ngesi presented visitors with a background history of the school and some of the projects she is spearheading and has pioneered for the school and the community.

"The school was started in 1962 on a farm that was turned into a mine for carbon and lime resources. The school was then moved to Boyiboyi for health reasons and to be closer to the community. It started as a corrugated iron structure built by local men. During the introduction of the Reconstruction and development programme (RDP), government built the current structure, which houses children from Grades 1 to 7. I joined the school in 1999 and became principal in 2003," she said.

Ngesi said that when she joined the school, she encountered a number of challenges, including a high level of illiteracy in the community, as well as poverty and hunger.

"Most children are raised by unemployed single mothers. Most parents cannot even afford the R40 annual school fee. I started the vegetable garden and the soup kitchen to alleviate poverty. I arranged for health workers to be trained to help feed children both at the school and at home. Members of the community were taught organic farming. I have also initiated a makeshift library and reading project," said the award-winning principal who is also a community builder and has been profiled in a number of newspapers for her community work.

She said it was after one of the members of the community had read in a local newspaper about her projects and a plea for a library and toilets that she contacted Eskom for assistance. The school has 375 learners and eight educators.

"The good Samaritan got my telephone number and contacted me. She took my file, which profiles everything that I do, and shared it with Eskom, and then Eskom contacted me and invited me to attend workshops on administration, classroom management, financial management and discipline in the classroom. The workshops continued for three years, and in turn, I began to share the information with other principals from surrounding schools.

"One day, Eskom called me and informed me about their plans to build our school. In 2009, they brought people to do feasibility studies, and afterwards, they showed us the plan of what they wanted to do. In October 2011, they announced that construction would start, and you can see that work has started," said the delighted principal.

Before we left the school, Ngesi reminded us to sign the "bible" to record the visit.

"It's getting full, but there are still a few more pages. I will be the last one to sign before we close it and open a new one," she said with a smile.

Education *continued*



Learners at Mdlazi primary school, Port Shepstone, KwaZulu-Natal, enjoying “play-time”

Food security

Rural communities have low levels of food security due to the lack of employment opportunities, a lack of basic farming facilities and adequate equipment, the escalation of food prices, increasing numbers of dependants and deforestation, resulting in climate change. In response, Eskom began a food security programme for rural communities that have arable agricultural land that was not fully utilised.

As a result of these needs, a number of food security projects were approved. The objective of the programme is to help communities become self-sufficient and to ensure that each household should be able to have one basic meal a day to alleviate hunger. Once the projects have grown and become sustainable, communities may look at the possibility of supplying local markets to increase their household income.



Top left: Vukukhanye Mpetsheni, Bizana, Eastern Cape
Bottom left and top: Ixhiba Co-operative Project, Pietermaritzburg, KwaZulu-Natal

Early childhood development

There are fundamental inequities in the early childhood development (ECD) sector in South Africa. The majority of South Africa's children have been and continue to be severely disadvantaged by inadequate ECD programmes and education. Early childhood interventions can only be successful if they incorporate all aspects of a child's development at a critical stage for the development of educational and learning skills and other crucial aspects of development.

Early childhood development refers to a comprehensive development approach for

children from birth to nine years of age, with the active participation of their parents and caregivers. Its purpose is to protect children's rights to develop their full cognitive, emotional, social and physical potential. Consistent with government's Education White Paper 1 on Education and Training (1995) and the Interim Policy for Early Childhood Development (1996), ECD is defined as an umbrella term which applies to the processes by which children from birth to at least nine years grow and thrive, physically, mentally, emotionally, spiritually, morally and socially.



Kusile ECD Programme

In 2012, a total of R10 million was approved by the Eskom Development Foundation for early childhood development in communities around the Eskom Majuba rail project and the "return-to-service" power stations. This funding will benefit 107 pre-schools, 130 practitioners and 3 387 children around towns such as Ermelo, Breyten, Wakkerstroom, Volksrust, Daggakraal, Standerton, Hendrina, Bethal, Middelburg and Emalahleni.

In the 2011/2012 financial year, an early childhood development capacity-building programme was implemented in 18 pre-schools around Delmas, Ogies, Devon and Eloff and around the new-build site for the Kusile power station. A total of 45 practitioners were trained, and 1 101 children received educational material and outdoor equipment from the support provided by the Eskom Foundation.

The programme was implemented over 18 months and training was completed at the end of September 2012. Practitioners now have the capacity to manage their classrooms through proper planning, by preparing daily programmes and writing observation and progress reports.

Indoor and outdoor play activities are now planned properly, and all learners get ample well-managed time to utilise such equipment and material, regardless of skill or ability. Health and safety also play a major role in these centres.

Children with special needs can now be accommodated, and these children are being given individual attention.

The practitioners have shown personal growth as they are better organised and can work in teams, and their communication skills have improved tremendously.

Education *continued*



Above: Thuthukani early childhood development centre, Delmas, Mpumalanga has created a haven for young children to grow emotionally, physically and mentally in a nurturing and stimulating environment
Right: Thuthukani is also used for ECD educator workshops

Mathematics, science and technology programme

The Student Development department in Eskom's Human Resources Division is the custodian of the mathematics, science and technology programme. Several programmes were initiated in 2003 in support of the Dinaledi programme launched by the Department of Basic Education to improve studies in mathematics and science in South Africa.

During the 2012/13 financial year, 8 996 learners in Grade 12 from six schools participated in the Eskom mathematics, science and technology programme, as well as in the Winter School Programme.

Programme objectives

- To increase the number of learners who pass Grade 12 in mathematics and science
- To build a pipeline of future Eskom bursary holders to study science, engineering and technology
- To act as a pilot project for potential input into the Dinaledi programme
- To act as resource centre for other schools

Location of participating schools

Name of school	Town and province
Atlantis secondary school	Atlantis, Western Cape
Kgomotso comprehensive school	Soshanguve, Gauteng
Little Flower secondary school	Ixopo, KwaZulu-Natal
Makgetse high school	Hammanskraal, North West
Motse Maria secondary school	Polokwane, Limpopo
Thengwe high school	Musina, Limpopo

Many schools are situated in poverty-stricken areas of the country, which is a major reason for the learners' inadequate performance and poor results.

The success of a school's performance is based on the number of learners who pass the final school examinations, with a greater emphasis on quantity than quality.

The Dinaledi programme started with only three schools. The Department of Education then expanded the programme to 12 schools, and finally, 18 schools were incorporated into the Dinaledi programme. These schools have been recognised as excellent resource learning centres because of the improvement and progress made through Eskom's intervention. The 18-school programme has become a model for the Department of Education and has provided guidance on managing the mathematics and science programme.

Eskom identified the business need to increase the skills pool of qualified, black and female learners who were motivated to embark on technical tertiary education studies as Eskom bursary holders. In response to the needs expressed by black Eskom bursary holders, where an exceptional effort was required to overcome the poor quality of technical secondary-school education, it was decided that a short-term, more-focused initiative had to be prioritised.

The resources provided by Eskom surpassed the Dinaledi programme's initiatives and added unprecedented value to the schools and their communities.

Education *continued*

Scope of support provided to the 18 beneficiary schools

- Two educators per school (mathematics and physical science)
- Learning material
- Teaching aids
- Science laboratory equipment
- Computers, printers and software
- Stationery

Results achieved

- Increase in the number of learners studying mathematics and science

- Increase in the number of schools offering mathematics and physical science
- High increase in girls taking mathematics and science
- Increase in pass rates
- Learner and school awards (Eskom Chairman's Awards)

Additional schools will be added to the existing number in the calendar year of 2013. The targeted schools are rural schools in the provinces of KwaZulu-Natal and Mpumalanga, the schools around Eskom's new-build areas, as well rural schools in other provinces.



Three Crowns primary school, Lady Frere, Eastern Cape

Further education and training college programme

The further education and training (FET) college programme was incorporated into the CSI strategy of the Foundation in 2010, with a view to supporting the developmental objectives of South Africa through an integrated education and skills development system.

The Foundation's FET programme aims at providing FET colleges with suitable and relevant equipment that will assist industry with alleviating scarce skills in sectors such as electrical engineering and diesel and mechanical engineering by providing a simulated workplace environment.

Enhlanzeni FET college in Mpumalanga

The Ehlanzeni FET college was established in 2003. Its mandate is to deliver National Certificates in vocational subjects (NCV) and NATED programmes and learnerships, including skills development programmes, in order to respond to the human resources, economic and development needs of the country.

It consists of six campuses, namely, Mlumati (Mangweni), Mapulaneng (Bushbuckridge), KaNyamazane (Msogwaba Trust), KaNyamazane (Masoyi Trust), Nelspruit and Barberton (Umjindi). Mlumati, Mapulaneng and the two KaNyamazane campuses are the only campuses that are predominantly rural. The majority of the learner population is drawn primarily from the rural areas of Mangweni, Nkomazi, Msogwaba Trust, Daanke Trust, Masoyi Trust and Tshabalala Township.

The FET provides training in:

- fitting and turning;
- welding and boiler-making;
- automotive mechanics; and
- electronics and electrical work.

The Eskom Foundation approved funding of R1.6 million towards the manufacturing, delivery and installation of electrical workshop equipment.

Health programmes: support towards health clinics

In contributing to improving the quality of life in communities where Eskom operates, the Foundation has supported a number of health-care initiatives that improve the accessibility and quality of health care. These include the

upgrading of community health-care centres, the provision of medical equipment and the provision of mobile primary health-care facilities to rural communities.

Thabo-Mofutsanyana district

The Thabo-Mofutsanyana district is one of the five districts in the Free State province divided into six subdistricts (Maluti-a-Phofung, Dihlabeng, Setsoto, Nketoana, Phumelela and Mantsopa) with a population of 830 084, Maluti-a-Phofung being the biggest and most rural with a population of 380 015 which comprises 46% of the whole population. The district has 74 fixed clinics, 27 mobile clinics, nine district hospitals and two regional hospitals.

The district has aligned itself with the provincial strategic plan and the provincial annual performance plan. The key objective is to make primary health-care (PHC) accessible to the community being served. The strategies employed are to increase the number of indicators achieved in order to reach the National millennium development goals (MDGs) and the key priority indicators as stipulated in the NSDA (negotiated service delivery agreement).

There is also a shortage of medical equipment at the clinics. Equipment is purchased annually, but as the funds are insufficient, generally only the old equipment is replaced, and no additional equipment is added. This has a major negative impact on the rendering of quality services.

The Department of Health: Nutrition Section, supported by the Senekal sentrum vir versorging van bejaardes (SSVB – Senekal Care Centre for the Aged), requested support from Eskom for purchasing medical equipment. The department currently faces serious challenges in purchasing basic medical equipment.

Senekal sentrum vir versorging van bejaardes*

The Senekal sentrum vir versorging van bejaardes is a registered NPO, which runs its offices from Senekal in the Free State. The centre is registered in terms of the Older Persons Act, No. 13 of 2006. The centre is an independent employer and has an independent corporate body. The centre is under the supervision and control of the management board which delivers services legally to all communities in the Free State. The aim of the centre is to deliver care and support services to frail elderly people, to persons with disabilities, as well as to provide health-care support services to the community.

The Eskom Foundation approved funding of just over R1 million towards purchasing medical equipment.

* Senekal centre for caring for the aged

Heideveld CDC

The Heideveld CDC started as an ARV services station two years ago, after G-F Jooste centre transferred all its ARV patients to the site. In April 2010, the patients remaining in care totalled 940, compared to April 2011 when the total was 1 314. The Heideveld CDC is housed in an old building, which is in desperate need of upgrading for the services it renders. This facility, even though it faced many challenges, still managed to admit more than 300 new patients in care over this 12-month period. The space needed will be used for consultation rooms for the ARV patients and for counselling.

The Foundation approved funding for the Heideveld CDC for purchasing sorely needed medical equipment.



Medical equipment

Philanthropy and welfare

Donations were made to 290 philanthropic and welfare causes (all registered non-profit organisations). The donations totalled R44,9 million with 367 121 beneficiaries (2012: 233 projects for R20,6 million and 387 758 beneficiaries; 2011: 225 projects for R19,7 million

and 138 815 beneficiaries). These projects are conducted in sectors such as education, early childhood development, health, support of the elderly, caring for people living with HIV/Aids, environmental issues and disaster relief.



Sophie's Home, Soshanguve, Gauteng



Bethel primary school, Kimberley, Northern Cape

Eskom Guardian i-Volunteer Programme

The *Eskom Guardian i-Volunteer (GiV)* Programme, initiated in 2009, is an initiative by the Foundation to encourage groups of employees to become involved in a registered community programme. The aim is to inspire and in turn create a desire to assist, develop and contribute to the betterment of other people's lives.

This initiative allows interested staff members the opportunity to give their time to those in need. The focus is on employees giving some of their time and skills to support vulnerable people through registered non-profit organisations (NPOs), thereby demonstrating Eskom's commitment to being a caring organisation. The i-Volunteer Programme furthermore contributes to instilling a sense of belonging, pride and team spirit among employees.

Eskom Development Foundation – GiV Winter Drive 2012

In the spirit of Sinobuntu the *Eskom Guardian i-Volunteer (GiV)* programme's 2012 Winter Drive supported orphans and vulnerable children (OVC) by encouraging Guardians to

donate blankets, beanies, scarves and socks, as well as cans and packets of soup.

Guardians based at Megawatt Park were also asked to donate 24-egg container cartons, to be used in a youth centre insulation project in Diepsloot on Mandela Day.

This national initiative gave each Eskom office, section and department the opportunity to support their selected OVC charity by collecting these items for donation to the children on 18 July 2012 (Mandela Day).

The Eskom Development Foundation was the champion of this drive and Guardians from operating units across the country were mobilised to support this initiative country-wide.

Collection baskets were set up in the atrium and at the bus entrance at Megawatt Park and on site at various operating units around the country.

The drive for donations ran from 1 July to 15 July 2012, and all the blankets, beanies, scarves, socks and soup received were distributed by the various GiV teams to the selected, registered OVC organisations on 18 July (Mandela Day).



GiV Winter Drive activity

Philanthropy and welfare *continued*

Eskom employees share Mandela Day spirit with the children of the Afrika Tikkun Centre in Diepsloot

Every year on 18 July, people all over the globe – and particularly in South Africa – spend a portion of their day giving back to those less fortunate than themselves in celebration of Mandela Day and the inspiring life's work of Mr Nelson Mandela.

In 2012, Minister of Public Enterprises, Malusi Gigaba, Eskom's Chairman, Zola Tsotsi and Eskom's executives and employees who are members of their *Guardian i-Volunteer or GiV Programme*, played their part in this mass movement of philanthropy by spending the day with the children of Afrika Tikkun's the Wings of Life Centre in Diepsloot.

Afrika Tikkun provides education, social and health services to the youth of South Africa and their families through a number of centres in townships around the country.

The Afrika Tikkun Wings of Life Centre in Diepsloot opened its doors in November 2008 and has been serving the community ever since. On Mandela Day 2012, members of Eskom's GiV programme assisted with sound-proofing a community centre with brightly painted egg boxes and painted a number of large containers that serve as storerooms for the centre.

There was also entertainment for the children, with jumping castles, clowns and face painting, ensuring that the joy inspired by Mr Mandela was felt by everyone on that special day.

The volunteers also provided the 250 children at the centre with school shoes, bags, crayons and colouring books – not to mention a delicious and nutritious meal.

Haylene Liberty, CEO of the Eskom Development Foundation, said: "It is a very special thing to see Eskom employees getting involved with local communities. From our top execs right through to our junior staff, no matter who you are, you can't help but be inspired by helping someone less fortunate than yourself."



Eskom executives at Mandela Day activation



Happy Birthday, Tata Madiba



The Honorable Minister of Public Enterprises, Mr Malusi Gigaba and Chairman of Eskom, Mr Zola Tsotsi at Afrika Tikkun centre in Diepsloot celebrating Tata Madiba's 94th birthday



Disaster relief

The South African Red Cross Society (SARCS), after applying for assistance from the Eskom Development Foundation, received a sum of R700 000 to assist 700 families that had been hard hit by the floods in KwaZulu-Natal. The relief distribution started after an intense damage verification programme had been conducted by the South African Red Cross, Eskom and municipalities.

On 19 January 2013, relief in the form of food parcels and blankets was successfully distributed in the Lamontville community hall where 100 families from Mega Village were accommodated.

On 22 January 2013, food parcels were distributed for the third time, in two different areas 100 in Dassenhoek and 100 in Zwelisha/Amaoti. Once again, the Eskom Development Foundation and SARCS were commended by the community and the councillors of both areas.

The fourth distribution took place on 25 January in two different communities. Three villages, namely, KwaNyuswa, Maphephetheni and Mkhizwana, received 100 food parcels. A further 100 food parcels were distributed in a community hall in W Section of Umlazi Township. Councillor Dladla expressed appreciation to both the Eskom Development Foundation and the South African Red Cross Society.

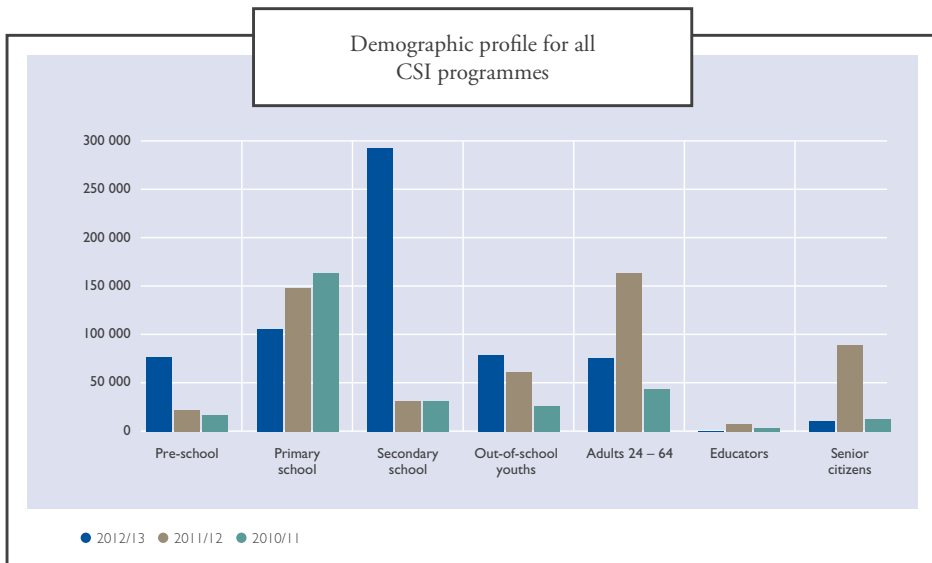
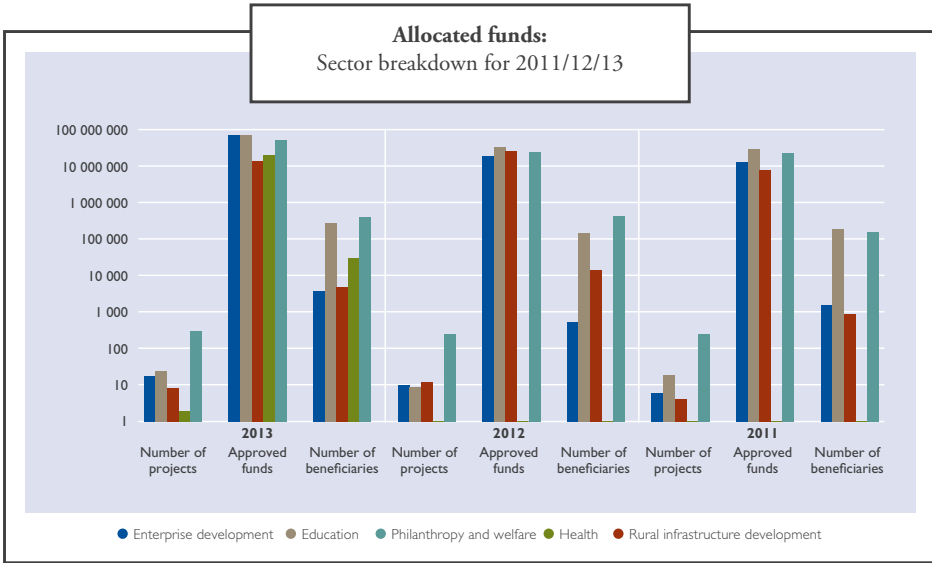
On 26 January 2013, 100 food parcels were distributed to people in Lindelani, Ntuzuma and Entombini. Councillor Mabizela expressed appreciation on behalf of the beneficiaries and the Ethekewinini Municipality, highlighting the severity of the damage caused by the floods on 11 and 12 December 2012.

Four areas around Ladysmith benefited from the final distribution on 8 February 2013, namely, Zakheni, Limehill, Steadville and Acaciaville. The communities in all seven of the identified areas were grateful for the intervention by Eskom and SARCS.

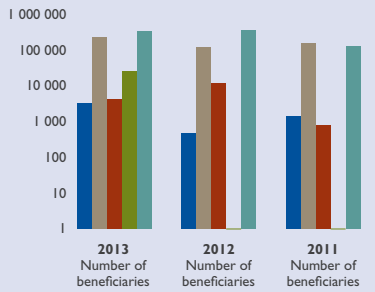
Challenges

The damage had been severe and was far greater than the amount allocated could cover. Consequently, Eskom's criteria for selection were based on the most vulnerable households.

Tables and graphs – 2013/12/11 sector breakdown

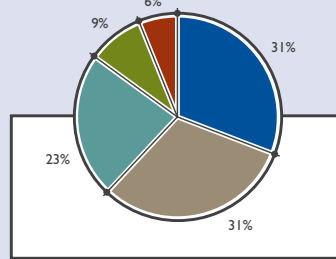


Performance:
Sector breakdown for 2011/12/13



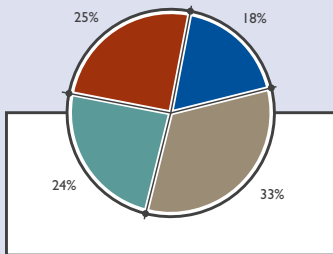
- Enterprise development
- Education
- Philanthropy and welfare
- Health
- Rural infrastructure development

Percentage sector expenditure (2013)



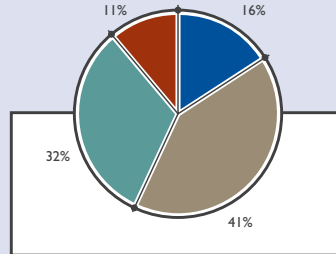
- Enterprise development
- Education
- Philanthropy and welfare
- Health
- Rural infrastructure development

Percentage sector expenditure (2012)



- Enterprise development
- Education
- Philanthropy and welfare
- Rural infrastructure development

Percentage sector expenditure (2011)



- Enterprise development
- Education
- Philanthropy and welfare
- Rural infrastructure development

Beneficiaries

Project name	Location	Province
Adonai Day Care	Botshabelo	Free State
Africa Unite	Cape Town	Western Cape
Afrika Tikkun	Diepsloot	Gauteng
Alberton Methodist Care and Relief Enterprise (AMCARE)	Alberton	Gauteng
Alexandria Lower primary school	Bushbuckridge	Mpumalanga
Amersfoort primary school	Amersfoort	Mpumalanga
Amy Biehl Foundation	Cape Town	Western Cape
The Anchor	Cape Town	Western Cape
Andzisani Drop-in Centre	Tzaneen	Limpopo
Arise and Shine Project	Durban	KwaZulu-Natal
Ashrafun-Nusrah The Noble Helpers Organisation (ANTNH)	Kimberley	Northern Cape
Association for Educational Transformation (ASSET)	Mowbray	Western Cape
B K Matlala Commercial high school	Bakone	Limpopo
Baitedi Primary Co-operative Ltd	Bultfontein	Free State
Barkly Child Welfare South Africa	Barkly West	Northern Cape
Bergzicht Training Centre	Stellenbosch	Western Cape
Bloemfontein Tuberculosis Association	Mangaung	Free State
Boetse secondary school	Polokwane	Limpopo
Bopanang Stimulation Centre	Phuthaditjhaba	Free State
Bophelong Disability Centre	Bothaville	Free State
Bosabosele Outreach Project	Dobsonville	Gauteng
Bosele Handicraft Centre	Sekhukhune	Limpopo
Bosmanpan primary school	Hendrina	Mpumalanga
Bright Kid Foundation for Mteteli Pre-school	Butterworth	Eastern Cape
Bright Kid Foundation for Ntshalleng Le Bana	Rustenburg	North West
Bulembu Lower and Higher primary school	Buffalo	Eastern Cape
Business Opportunities and Franchise Expo 2012	National	Flagship
C S Medical and Relief Services (Bethesda Project)	George	Western Cape
Capoeira Educational Youth Association	Hout Bay	Western Cape
Carel du Toit Centre – Trustfonds vir die Habilitasie van Gehoorgestremde Kinders	Tygerberg	Western Cape
Caring Hearts	Kimberley	Northern Cape
Cee-Jay Teleka Educare Centre	Bloemfontein	Free State
Child Welfare SA Ema	Emalahleni	Mpumalanga
Colville Community Project	Kimberley	Northern Cape
Contractor Academy	Flagship	KwaZulu-Natal
Contractor Academy	Flagship	Gauteng
Contractor Academy	Flagship	Mpumalanga

Project name	Location	Province
Contractor Academy	Flagship	Limpopo
Contractor Academy	Flagship	Eastern Cape
Contractor Academy	Flagship	Free State
Contractor Academy	Flagship	Northern Cape
Contractor Academy	Flagship	Western Cape
Contractor Academy	Flagship	North West
Community-based Prevention and Empowerment Strategies in South Africa	Mondeor	Gauteng
Creating Effective Families	Mossel Bay	Western Cape
Cwakeme high school	Hluhluwe	KwaZulu-Natal
Die Heuvel Speelskool	Calitzdorp	Western Cape
Dihlabeng Development Initiative	Bethlehem	Free State
Dirang Mmogo Business Enterprises	Jouberton	North West
Doctors for Life Project Care	Tugela Ferry	KwaZulu-Natal
Douglas Aids Action Group	Douglas	Northern Cape
Dumezweni primary school	Delmas	Mpumalanga
Ebongo Day Care Centre	Mankuranwe	Northern Cape
Early childhood development programme	Nquthu	KwaZulu-Natal
Early childhood development programme	Mnambithi	KwaZulu-Natal
Early childhood development programme	Hendrina	Mpumalanga
Ekukhanyeni Youth Centre	Grootvlei	Mpumalanga
Ekurhuleni East Further Education and Training college	Kempton Park	Gauteng
Ekurhuleni West FET	Alberton	Gauteng
Emtfonjeni primary school	Kabokweni	Mpumalanga
Enkosi Crèche	Colesberg	Northern Cape
Entokozweni primary school	Kabokweni	Mpumalanga
Enkhokhokweni primary school	White River	Mpumalanga
Eskom business investment competition 2012	National	Flagship
Eskom Human Resources Tertiary education support programme (TESP)	National	National
Eskom Expo for Young Scientists 2012	National	National
Ethembeni Children's Day Care Centre	George	Western Cape
False Bay College	Tokai	Western Cape
Fifth Avenue Day Care Centre	Athlone	Western Cape
Fumani Altein Drop-in Centre	Fumani	Limpopo
Gateway Educare Centre	Nelspruit	Mpumalanga
Genesis Community Projects	Mossel Bay	Western Cape
Global Jewellery Academy	Lenasia	Gauteng

Beneficiaries *continued*

Project name	Location	Province
Goitlamela Early Childhood Development	Barkley West	Northern Cape
Good Samaritan Child and Youth Care Centre	Buffalo	Eastern Cape
Great Com. Youth Platform	Daveyton	Gauteng
Ha! Qua Youth Project (HYP)	Riversdale	Western Cape
Happy Child-care Centre	Tzaneen	Limpopo
Heavenly Promise 48	Vredendal	Western Cape
Hebron Youth Club	Hebron	North West
Help2Read	Rosebank	Western Cape
Helen Bishop Orthopaedic After Care Home	Kimberley	Northern Cape
Hendrick Nthambeleni secondary school	Dzanani	Limpopo
Hennenman Victim Empowerment Forum	Phomolong	Free State
Homevale high school	Kimberley	Northern Cape
Hope Cape Town Association/Trust	Bellville	Western Cape
Hope Orphanage Shelter	Benoni	Gauteng
Hopewell Day Care Centre	Perdekop	Mpumalanga
House of Hope	Vredenburg	Western Cape
Ikageng Community Crèche	Kimberley	Northern Cape
Iketsetse Itumele Crèche	Bethlehem	Free State
Ikgomotseng Orphans' Care	Soutpan	Free State
Ikhaya lethu Care Centre	Pietermaritzburg	KwaZulu-Natal
Informed Kids Care	Thokoza	Gauteng
Inkululeko Day Care Centre	Katlehong	Gauteng
Isiseko Educare Centre	George	Western Cape
Ithemba Lobomi	George	Western Cape
Ithemba lethu Aged Club	Mossel Bay	Western Cape
Itlhokomeleng Association for Aged and Disabled	Alexandra	Gauteng
Itumeleng Sechaba Home-based Care	Duduza	Gauteng
Ixabiso Lemfundo	Philippi	Western Cape
Jabulani primary school	Nelspruit	Mpumalanga
Jahari Christian Academy	Benoni	Gauteng
James House	Hout Bay	Western Cape
June and Andrew Mlangeni Foundation	Johannesburg	Gauteng
Kamva	Philippi	Western Cape
Karabo: I am the Solution	Alberton	Gauteng
Karookop	Piketberg	Western Cape
Kathorus	Katlehong	Gauteng
Khaloni Development Agency	Phalaborwa	Limpopo

Project name	Location	Province
Khayalabantwana Bebambisene Organisation	Boksburg	Gauteng
Khayalemfundo primary school	Mandini	KwaZulu-Natal
Khothalang Mental Health	Thabong	Free State
Kimberley Technical high school	Kimberley	Northern Cape
Kingsway secondary school	Benoni	Gauteng
Klaarstroom primary school	De Rust	Western Cape
Koekenaap primary school	Koekenaap	Western Cape
Kopanang Vaalkop Drop-in Centre	Polokwane	Limpopo
Kopano – Tshwaragano Blind and Disabled Group	Barkley West	Northern Cape
Kouga schools	Uitenhage	Eastern Cape
Kusile Paediatric Mobile Unit	Delmas	Limpopo
Kuyasa Community Enrichment Centre	Vredendal	Western Cape
Kwanda Educare Centre	Kraaifontein	Western Cape
Kwakhanya Crèche	George	Western Cape
Kwakwatsi Crèche	Koppies	Free State
Laerskool Grootvlei	Grootvlei	Mpumalanga
Lechabile Special Needs Care Centre	Bloemfontein	Free State
Lephalele whole-school development programme	Lephalele	Limpopo
Lesedi Day Care Centre	Windsorton	Northern Cape
Lesedi Youth Empowerment	Hoopstad	Free State
Lethipele high school	Acornhoek	Mpumalanga
Letlotlo primary school	Seshego	Limpopo
Lifeline Free State	Thabong	Free State
Lightening Lakhanya Project	Knysna	Western Cape
Lindley high school	Lindley	Free State
Lindulwazi Oluhle Crèche	Katlehong	Gauteng
Lithalethu Educare Centre	Stellenbosch	Western Cape
Lithe-taa Educare Centre	Philippi	Western Cape
Little Angels Day Care and Pre-school	Soweto	Gauteng
Lokothwayo primary school	Gingindlovu	KwaZulu-Natal
Luckhoff Kabouterland Crèche	Luckhoff	Free State
Lukhanyo Educare Centre	Port Elizabeth	Eastern Cape
Lwazi primary school	Gugulethu	Western Cape
Maakere high school	Acornhoek	Mpumalanga
Mahlatjane primary school	Mafefe	Limpopo
Majuba further education and training college	Newcastle	KwaZulu-Natal
Majuba Rail/Pixley ka Seme ECD Programme	Ermelo	Mpumalanga

Beneficiaries *continued*

Project name	Location	Province
Majuba Rail/Pixley ka Seme Paediatric Mobile Unit	Ermelo	Mpumalanga
Makahule Multipurpose Centre	Giyani	Limpopo
Makhahlela primary school	Kabokweni	Mpumalanga
Manger Care Centre (The)	Benoni	Gauteng
Mangqakaza BC school	Mandini	KwaZulu-Natal
Manthe Naledi Garden Project	Taung	North West
Mantheka wa Bakwena Crèche	Bochum	Limpopo
Maokeng Child Welfare Crèche	Kroonstad	Free State
Maqabela primary school	Kabokweni	Mpumalanga
Margaret Maltman Crèche	Kwathema	Gauteng
Masibambisane Home-based Care and Support Group	Mdantsane	Eastern Cape
Masimanyane Project	George	Western Cape
Masincedisane Crèche	Mossel Bay	Western Cape
Masindezama Community Development Project	Franschoek	Western Cape
Masingita Children's Ministry	Endicott	Gauteng
Masiphuhlise	Kraaifontein	Western Cape
Masungulo Educare Centre	Levubu	Limpopo
Matjhabeng Rape Intervention Care Centre	Welkom	Free State
Matsetseng primary school	Lephalale	Limpopo
Matsulu primary school	Nelspruit	Mpumalanga
Mhlangazane primary school	Dundonald	Mpumalanga
Mhlwazini high school	Bergville	KwaZulu-Natal
Mkhulu Community Home-based Care Centre	Bushbuckridge	Mpumalanga
Mlilo primary school	Kabokweni	Mpumalanga
Mnambithi FET college	Ladysmith	KwaZulu-Natal
Moalosi Crèche	Tweeling	Free State
Moeketsi Day Care Centre	Fouriesburg	Free State
Moholoholo secondary school	Acornhoek	Mpumalanga
Moreipuso Home Community-based Care	Bushbuckridge	Mpumalanga
Mossel Bay Care Centre	Little Brak River	Western Cape
Mothergoose Day Care Centre	Welkom	Free State
Moonlight Foundation	Rivonia	Gauteng
Moutse primary school	Mbibane	Mpumalanga
Mphephu Orphan and Vulnerable Drop-in Centre	Dzanani	Limpopo
Mpumalanga Agri Skills Development and Training (MASDT)	Dundee	KwaZulu-Natal
Mpumalanga Agri Skills Development and Training (MASDT)	Nelspruit	Mpumalanga
Mpumalanga Agri Skills Development and Training (MASDT)	Sekhukhune	Limpopo

Project name	Location	Province
Mudimeli secondary school	Nzhelele	Limpopo
Mvula Trust (Ramotsinyadi Community Water Project)	Pietersburg	Limpopo
Mzam'Omhle Educare Centre	Kraaifontein	Western Cape
Nala Organisation	Orange Farm	Gauteng
National Association of Child-care Workers	Cape Town	Western Cape
Neo Day Care Centre	Bloemfontein	Free State
New Beginning Crèche	Koffiefontein	Free State
Newton primary school	Kimberley	Northern Cape
New Life Advice and Counselling Community Centre	Soweto	Gauteng
New Millennium Educare Centre	Khayelitsha	Western Cape
New Orlies Drop-in Centre	Malamulele	Limpopo
New Women's Movement	Bellville	Western Cape
NG Church Children's Home	Danielsrus	Northern Cape
Nigel Caring Community	Nigel	Gauteng
Njabulo Pre-school and Crèche	Sharville	Gauteng
Nobandla Nursery and Pre-school	New Brighton	Eastern Cape
Nolungile Educare	Gugulethu	Western Cape
Nolusapho Pre-school	Zwide	Eastern Cape
Noluthando Pre-primary school	Zwide	Eastern Cape
Noluthando Women's Project	George	Western Cape
Nomthandazo Educare Centre	Brackenfell	Western Cape
Nomzamo Crèche	Luckhoff	Free State
Nondzame Educare Centre	Cape Town	Western Cape
Norvalpont primary school	Arlington	Free State
Ntataise Day Care Centre	Dewetsdorp	Free State
Nyeleti's Children's Home	Benoni	Gauteng
Oqondweni primary school	Mbazwana	KwaZulu-Natal
Othandweni Day Care	Nigel	Gauteng
Paballong Educare Centre	Heilbron	Free State
Pacaltsdorp secondary school	George	Western Cape
Phakani primary school	Kabokweni	Mpumalanga
Phaphama Crèche	Koppies	Free State
Phaphaphani Child Welfare and Resources	Dzanani	Limpopo
Phendulani Senior secondary school	Acornhoek	Mpumalanga
Phenyo Community Health Development Project	Tzaneen	Limpopo
Philippi Children's Centre	Philippi	Western Cape
Phomolong Youth Development Centre	Hennenman	Free State

Beneficiaries *continued*

Project name	Location	Province
Phumzile Crèche and Pre-school	Katlehong	Gauteng
Plettaid Foundation (The)	Plettenberg Bay	Western Cape
Poppy Joy Day Care	Duduza	Gauteng
Progress Crèche	Pampierstad	Northern Cape
Protec Programme for Technological Careers	Spruitview	Gauteng
Ranisi Community-based Project	Kraaifontein	Western Cape
Ratang Maqheku Day Care Centre	Parys	Free State
Reach the Children	Thabong	Free State
Realistic Rebuilding and Life Training Centre	Cape Town	Western Cape
Reamogetse Early Learning Centre	Kuruman	Northern Cape
Reatlegile Drop-in Centre	Letaba	Limpopo
Reiketseditse Disabled Day Centre	Hennenman	Free State
Rekgotsofetse Educare Centre	Sasolburg	Free State
Rikona Nga Lufuno Home-based Care & care givers project	Sandton	Gauteng
Roadside Community Project	Vrede	Free State
Roima Drop-in Centre	Thohoyandou	Limpopo
Rosemore Home for the Aged	Rosemoor	Western Cape
SA Red Cross Society – Ethekwini Municipality	Durban	KwaZulu-Natal
SA Red Cross Society – Amaoti/Zwelisha	Amaoti	KwaZulu-Natal
SA Red Cross Society – Dassenhoek	Dassenhoek	KwaZulu-Natal
SA Red Cross Society – Kwanyuswa	KwaNyuswa	KwaZulu-Natal
SA Red Cross Society – Mnambithi Municipality	Ladysmith	KwaZulu-Natal
SA Red Cross Society – Ntuzuma Municipality	Ntuzuma	KwaZulu-Natal
SA Red Cross Society – Port Alfred	Port Elizabeth	Eastern Cape
SA Red Cross Society – Umlazi Municipality	Umlazi	KwaZulu-Natal
Sakhingomso Crèche	George	Western Cape
Sakhisizwe Home-based Care	Katlehong	Gauteng
Salvation Army Crèche (The)	Galesheve	Northern Cape
Sange Development Project	Khayelitsha	Western Cape
Sasolia primary school	Kinross	Mpumalanga
SEDA Agricultural and Mining Tooling Incubator	Bloemfontein	Free State
Sekhukhune further education and training college	Grobblersdal	Limpopo
Sibongile Crèche	Duduza	Gauteng
Sibongile Early Learning Centre and Pre-school	Katlehong	Gauteng
Sibongujeza primary school	Hibberdene	KwaZulu-Natal
Sibukosethu primary school	Emalahleni	Mpumalanga
Sifunlwati Day Care	Kanyamazane	Mpumalanga

Project name	Location	Province
Sikhula Sonke Early Childhood	Khayelitsha	Western Cape
Simunye Educare Centre	Philippi	Western Cape
Sinako Educare	Gugulethu	Western Cape
Sinethemba Educare Centre (Joe Slovo Village)	Mossel Bay	Western Cape
Sinethemba Educare Centre (Old Crossroads)	Crossroads	Western Cape
Sinethemba Support Group	Dunnottar	Gauteng
Sinomonde Educare Centre	Zwide	Eastern Cape
Sithabile Drop-in Centre	Arlington	Free State
Siyabathanda Educare	Kraaifontein	Western Cape
Siyakhula Children's Home	Orange Grove	Gauteng
Siyanithanda Disabled Child-care Centre	Groot Brakrivier	Western Cape
Siyathemba primary school	Balfour	Mpumalanga
Siyazama Educare Centre	Delft	Western Cape
Sizabantu Support Centre	Boksburg	Gauteng
Somerset Hospital	Green Point	Western Cape
Sonqoba Aids Programme Trust (SAPT)	Eshowe	KwaZulu-Natal
Sophakama Hospice Centre	Mossel Bay	Western Cape
Soshanguve Manufacturing Technology	Soshanguve	Gauteng
Demonstration Centre – Atlantis	Atlantic	Western Cape
Soshanguve Manufacturing Technology Demonstration Centre	Soweto	Gauteng
South African Chemical Technology Incubator (Chemin)	Durban	KwaZulu-Natal
Soweto FET college	Soweto	Gauteng
Star Day Care Centre	Kempton Park	Gauteng
Stellenbosch University (SciMathUs)	Stellenbosch	Western Cape
Step by Step Pre-school	Khayelitsha	Western Cape
Sterkstroom Drop-in Centre	Thohoyandou	Limpopo
Sunbeam Play Group	Melkhoutfontein	Western Cape
Teach SA	Lephalale	Limpopo
Tebogo Home	Orlando	Gauteng
Thabang Information Centre	Hartswater	Northern Cape
Thabiso	Warrenton	Northern Cape
Thabo Mofutsanyana Health District	QwaQwa	Free State
Thantaswa Educare Centre	Nyanga	Western Cape
Thatohatsi Crèche	Springfontein	Free State
Theewaterskloof Agency for Social Transformation and Economic Development (TASTED)	Riviersonderend	Western Cape
Tshedimoshu Garden Project	Gauteng	Gauteng

Beneficiaries *continued*

Project name	Location	Province
Thembaletu Day Care Centre	Jacobsdal	Free State
Thojane Farming Co-operative	Phokeng	North West
Thusanang Advice Centre	Phuthaditjhaba	Free State
Thusanang HIV/Aids Relief Project	Roodepoot	Gauteng
Tina Nursery and Pre-school	Kwazakhele	Eastern Cape
Tiny Tots Kids and Community Development Centre	Daveyton	Gauteng
Tjhabatsohle primary school	Vereeniging	Gauteng
Tlhokomelo Home-based Care	Soweto	Gauteng
Toise secondary school	Buffalo	Eastern Cape
Trinity Deliverance Ministries	Nigel	Gauteng
Tshana high school	Mandini	KwaZulu-Natal
Tshepanang Children's Fund	Welkom	Free State
Tshepo Foundation	Bloemfontein	Free State
Tshikosi primary school	Thohoyandou	Limpopo
Tshireletso secondary school	Lephalale	Limpopo
Tshireletso Victim Empowerment Centre	Hoopstad	Free State
Tshuxekani Drop-in Centre	Namakgale	Limpopo
Tshwaraganang Old Age Centre	Delportshoop	Northern Cape
Tugela secondary school	Mandini	KwaZulu-Natal
Tumhole Self-help Association for Disabled	Parys	Free State
Tygerberg Hospice Trust (The)	Bellville	Western Cape
Ubuntu Unwasted Crafts	Mossel Bay	Western Cape
Universe Theatre	Landsdowne	Western Cape
Uthaka secondary school	Volksrust	Mpumalanga
Vhembe further education and training college	Thohoyandou	Limpopo
Vision Afrika	Stellenbosch	Western Cape
Vredendal Service Centre	Vredendal North	Western Cape
Vryheid Comprehensive secondary school (MH)	Vryheid	KwaZulu-Natal
Vuka Early Childhood Development Centre	Bultfontein	Free State
Vukuhambe Association for the Multi Disabled	Worcester	Western Cape
Vusisizwe Educare Centre	Mossel Bay	Western Cape
Vuyiswa Home for Adult Handicapped	Orange Farm	Gauteng
Waterberg FET college	Potgietersrus	Limpopo
West Coast FET college	Malmesbury	Western Cape
Western Cape Primary Science Programme Trust	Landsdowne	Western Cape
Wesfleur Hospital	Muizenberg	Western Cape
WESSA Eskom energy and sustainability programme	National	National

Project name	Location	Province
Wisani primary school	Bushbuckridge	Mpumalanga
World Focus Victim Empowerment	Thohoyandou	Limpopo
Wynberg Society for the Aged	Retreat	Western Cape
Xikukwani Development Organisation	Giyani	Limpopo
Yellowwoods Farm school	Port Elizabeth	Eastern Cape
Yu Blessed Deng Day Care Centre	Ladybrand	Free State
Zamiwonga Pre-school	Mthatha	Eastern Cape
Zanethemba Kidz Haven	Philippi	Western Cape
Zenzele YWCA Pre-school	Kroonstad	Free State
Zimisele HIV/Aids Care	KwaMashu	KwaZulu-Natal

Eskom Development Foundation NPC

Eskom Megawatt Park Sunninghill Sandton 2146 PO Box 1091 Johannesburg 2000
 Tel +27 11 800 8111 Email csi@eskom.co.za Website www.eskom.co.za/csi
 Registration number 1998/25196/08



www.eskom.co.za