



**ENVIRONMENTAL IMPACT ASSESSMENT FOR A
GENERAL LANDFILL SITE AND A HAZARDOUS
WASTE STORAGE FACILITY IN LEPHALALE,
LIMPOPO PROVINCE**

PUBLIC & FOCUS GROUP MEETINGS

10 March 2009

PRESENTED BY MS NKHENSANI KHANDLHELA

WELCOME!!!!!!!

Project Team

- Mr Kubentheran Nair (Eskom Project Manager)
- Bruce Stroud (Eskom Integration Project Manager)
- Ms Ilse Aucamp (Social Impact Assessment)
- Ms Nkhensani Khandhela (Envirolution Project Manager & Scientist)
- Ms Netisha Chetty (Envirolution Public Participation)
- Ms Emma Maphathe (Envirolution Public Participation)

Agenda

- Meeting Procedure
- Purpose of the Meeting
- Project Description
- Project Motivation
- Legislative Framework
- Screening Process
- EIA Process
- Alternatives
- Public Participation
- Way Forward

Meeting Procedure

- Keep cell phones off
- Sign the attendance register
- Work through the facilitator
- Note your comments in the comment sheets provided
- Focus on issues relevant to the EIA
- Identify yourselves during question time
- Wait for Q & A session to ask questions

Purpose of Meeting

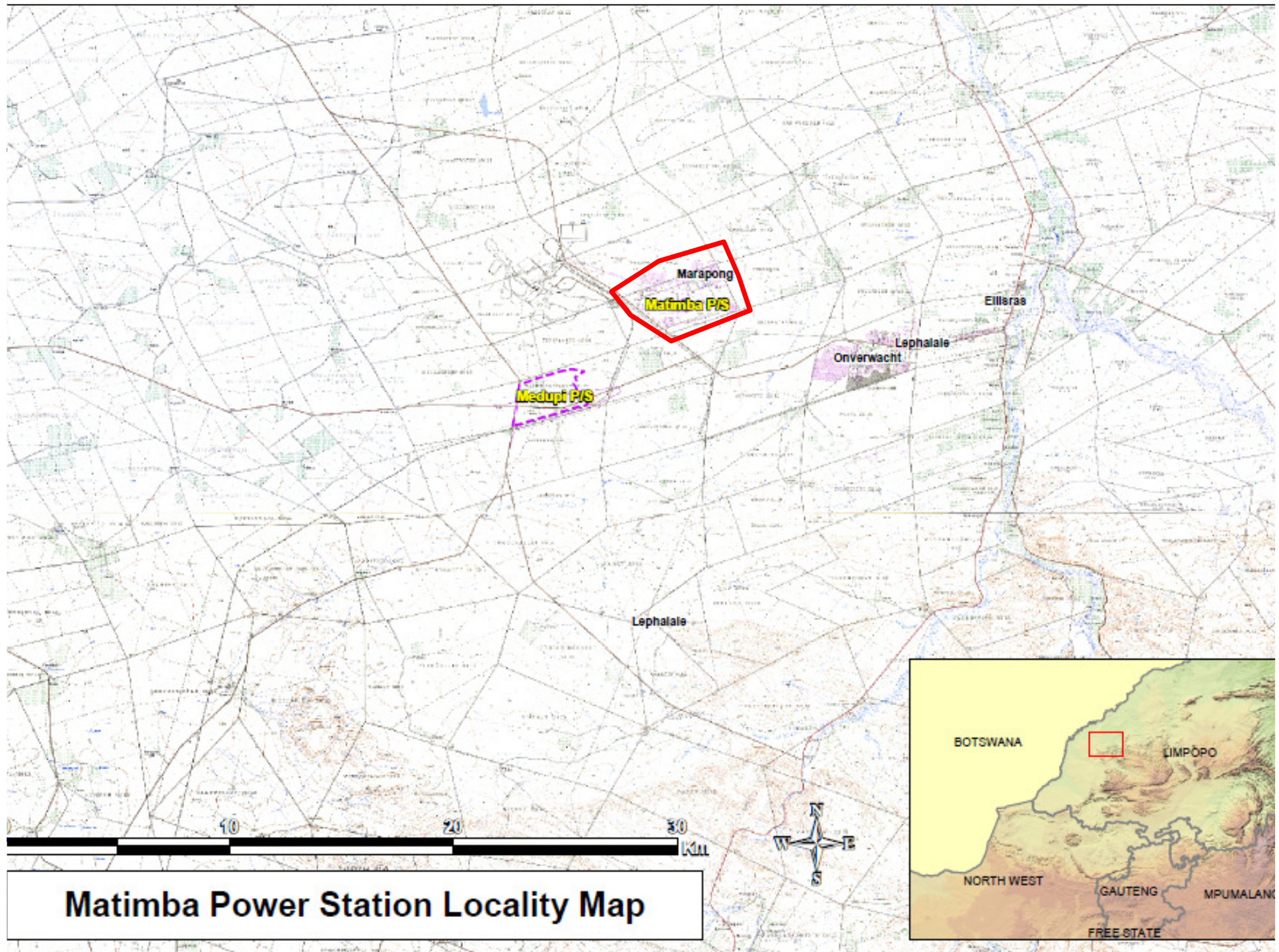
- Provide a brief overview of the EIA Process
- Present a summary of the findings of Scoping Phase
- Receive comments and feedback
- Provide details regarding the Way Forward

Project Description

- Construction of **general landfill site and hazardous waste storage facility (including co-disposal)**
 - Location – vicinity of Medupi Power Station
 - Eskom anticipates a 20 hectare site (incl.associated Infrastructure)
 - Ancillary infrastructure includes the following:
 - General storage and handling facilities;
 - Water supply pipelines (for both construction and operation);
 - Electricity supply during the construction phase;
 - Access roads (internal and external); and
 - Overhead power lines.
 - The proposed development will be constructed on **Eskom owned property.**
-

Project Motivation

- Existing waste disposal site in Lephalale is not licensed
- Eskom SHE Policy and legal requirement
- Matimba and Medupi Power Station (currently under construction) produce general and hazardous waste.
- Waste from Matimba and Medupi is transported to Gauteng for disposal
- Eskom incurring high costs from transporting waste
- Eskom also considering two coal fired power stations in general vicinity
- Eskom thus require a landfill and a hazardous waste storage facility in close proximity to Matimba and Medupi Power Stations.

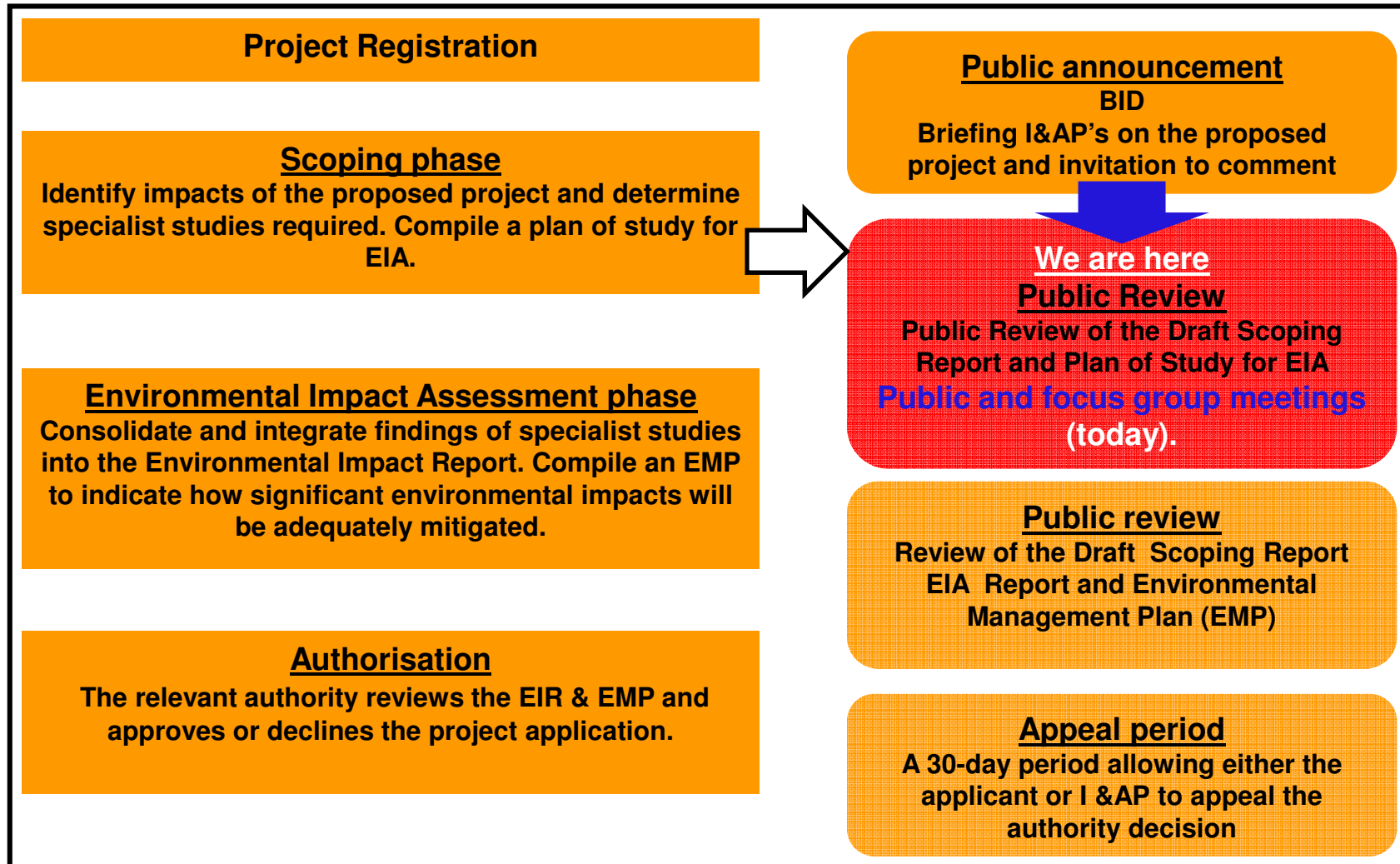


Matimba Power Station Locality Map

EIA Process

- An EIA is a good planning and decision-making tool.
- It is able to identify the environmental impacts of a proposed project.
- It ensures that the project will be environmentally acceptable and integrated into the surrounding environment in a sustainable manner.
- The key objective of public participation is to assist stakeholders to identify issues of concern and make suggestions for enhanced benefits.

Scoping and EIA Process



Environmental Legislation

- Primary Legislation: National Environmental Management Act, 1998 (Act 107 of 1998) NEMA
- EIA Regulations 2006 (GN R. 385, 386 and 387)
- Scoping and EIA
- Department of Environmental Affairs & Tourism (Authority)
- Limpopo Dept of Economic Development Environment & Tourism (Provincial Authority)
- DEAT Ref Number is **12/12/20/1399**

Legislation – GN 386

Listed Activity No (GNotice No 386)	Summary
Item 1(l):	transmission and distribution of above ground electricity (>120kv)
Item 1(m):	impacts on water supply infrastructure (32m)
Item 1 (p):	temporary storage of hazardous waste
Item 7	above-ground storage of dangerous goods (>30 cubic meters but less than 1000 cubic meters)
Item 13	abstraction of groundwater
Item 15	construction of a roads
Item 16	transformation of undeveloped, vacant or derelict land for development

Legislation – GN 387

Listed Activity No (GN 387)	Summary
Item 1(c):	above ground storage of a dangerous good
Item 1(e):	permitting or licensing requirements
Item 1(f):	recycling, re-use, handling, temporary storage or treatment of general waste
Item 1(g):	recycling, handling, treatment, storage or final disposal of hazardous waste
Item 1 (l)	transmission and distribution of above ground electricity (>120 kV)
Item 1 (o)	Final disposal of general waste covering an area of 100 square metres

EIA Process

The three phases involved are:

- **Phase 1: Site Screening Study**
- **Phase 2: Environmental Scoping Study**
- **Phase 3: EIA & EMP**

Screening process

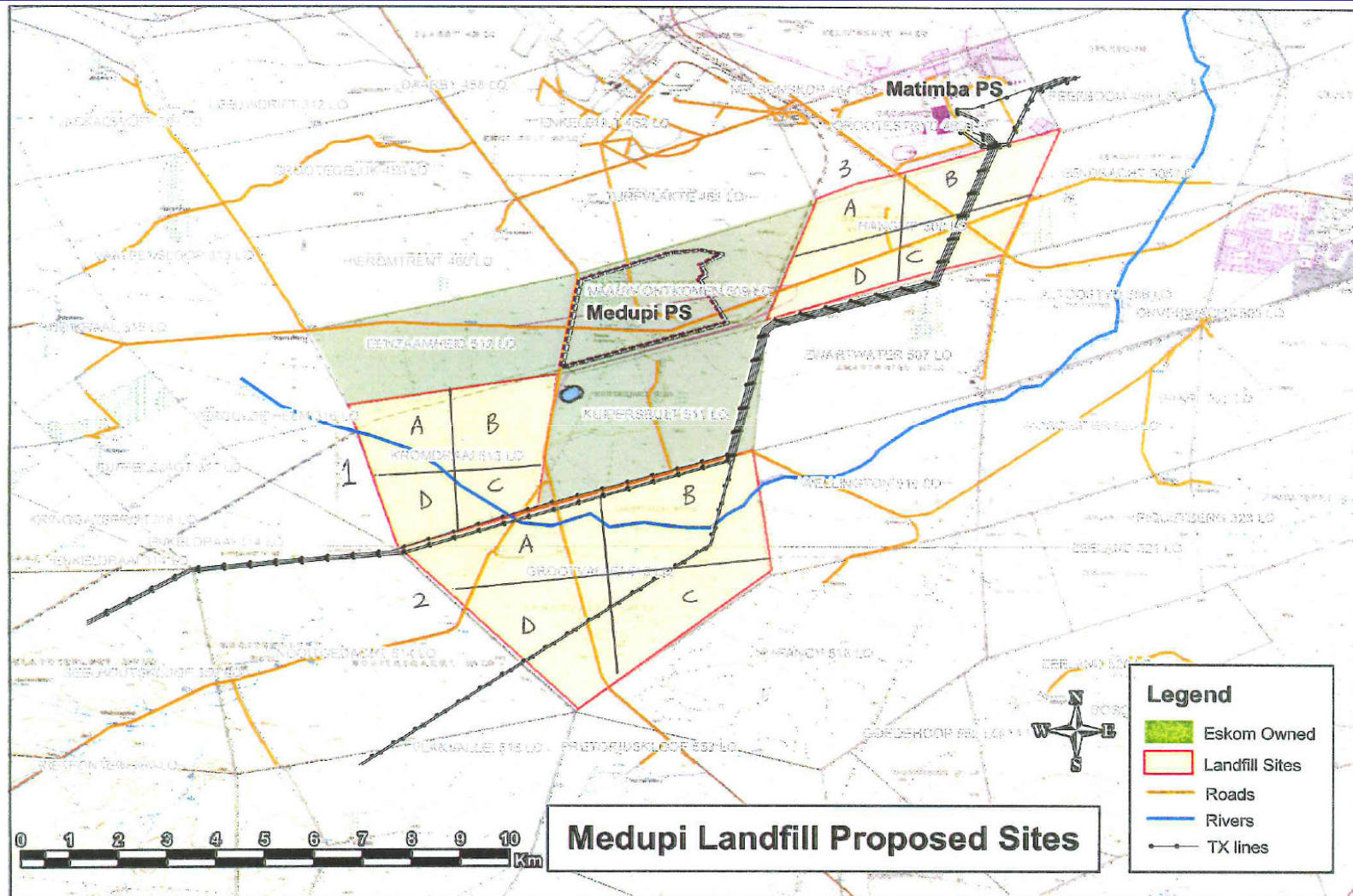
- Envirolution and Specialist team undertook a site visits
- Site visit s undertaken on 17-18 Nov 08 & 17 Dec 2008
- Included identification of 3 potential farms in the area
- Three farm portions (Kromdraai 513LQ, Grootvallei 515 LQ, Hanglip 508 LQ)

Screening process

➤ The following specialist studies are being undertaken:

- **Agricultural Potential;**
- **Air Quality;**
- **Avifauna (birds);**
- **Engineering Design;**
- **Geo-hydrological;**
- **Geotechnical;**
- **Heritage;**
- **Noise;**
- **Social ;**
- **Wetland;**
- **Terrestrial Fauna & Flora;**
- **Traffic; and**
- **Visual.**

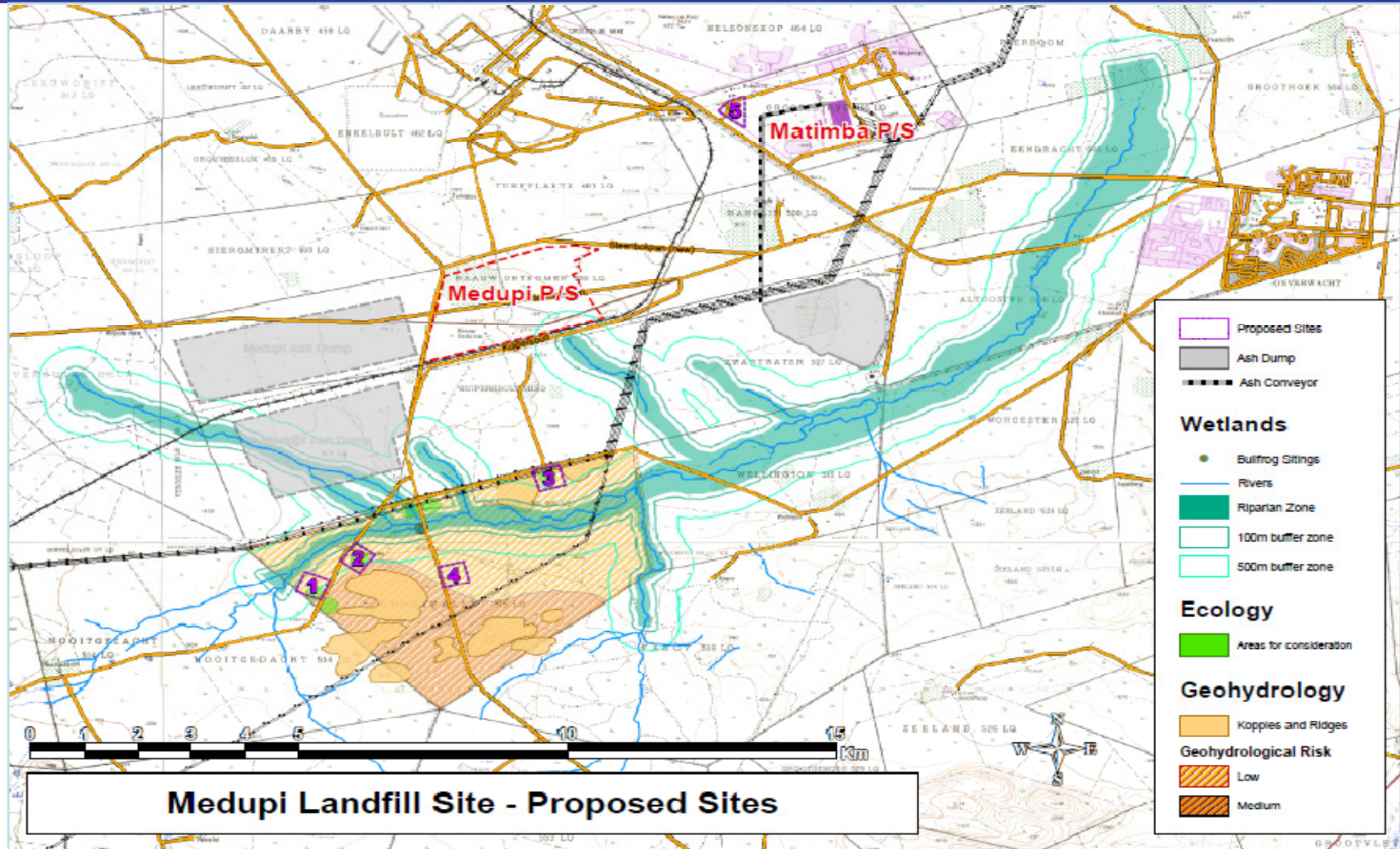
Screening process (Summary)



Alternative Sites - Scoping

- The farms **Kromdraai** and **Hanglip** were subsequently eliminated due to fatal flaws and/or unavailability
- Four sites within **Grootvallei** were then proposed
- A 5th Site (**Farm Grootestryd** in Matimba Power station) was later added
- Specialist studies indicate Site 5 will have the least environmental impact
- Site 5 will be evaluated in the EIA phase

Proposed alternative sites



Specialist Recommendations

SPECIALISTS	CONCLUSION / RECOMMENDATIONS
<i>Geohydrology</i>	Site 5 – Already disturbed and not a greenfield site.
<i>Geotechnical</i>	Site 5 – Adequate cover material; good excavatability conditions; and site is already disturbed.
<i>Ecological</i>	Site 5 – Least sensitive compared to other sites; and site is already disturbed.
<i>Air quality</i>	Site 3 - Low health risk; and close proximity to power stations.
<i>Transport</i>	Site 5 – Close proximity to Matimba power station will reduce transportation costs; and roads are already hard-surfaced.
<i>Heritage</i>	Site 5 – No heritage or archaeological features are known to exist.
<i>Social Impact</i>	Site 5 – Located away from community; and site is already disturbed.

Specialist Recommendations

SPECIALIST	CONCLUSION / RECOMMENDATIONS
<i>Wetland and Surface Water Resources</i>	Site 5 – Located away from watercourses and will not require detailed assessments during the EIA.
<i>Agricultural</i>	All sites – Very low potential for arable cultivation (low rainfall and high temperatures).
<i>Visual</i>	Site 5 – Site is already disturbed (previous landfill site, roads, railway lines, power lines, conveyor belts, power station, etc); and hidden away from main roads.
<i>Noise</i>	Site 5 – Located away from communities; and noise level will be minimal during operations.

Matimba Power Station – Location



GENERAL LANDFILLSITE AND A HAZARDOUS WASTE STORAGE FACILITY

Public Participation Process to date

MINIMUM REQUIREMENTS FOR PUBLIC PARTICIPATION AS PER NEMA REGULATIONS 2006 AND DEAT GUIDLINES	PUBLIC PARTICIPATION PROCESS FOLLOWED TO DATE
<p><i>Place an advertisement in one local newspaper.</i></p> <p><i>Place an advertisement in at least one provincial newspaper or national newspaper.</i></p>	<p>Advertisements were placed in a local newspaper - <i>Mogol Post</i>; and regional newspaper - <i>Star</i> on 30 January 2009.</p>
<p><i>Fix at least one (1) notice board at a place conspicuous to the public at the boundary or on the fence of the site where the activity to which the application relates is to be undertaken.</i></p>	<p>Notices were erected on site and at visible and accessible locations close to the site on 29th - 30th January 2009.</p>

Public Participation Process to date

MINIMUM REQUIREMENTS FOR PUBLIC PARTICIPATION AS PER NEMA REGULATIONS 2006 AND DEAT GUIDLINES

Written notices:

- *To owners and occupiers of land adjacent to the property where the activity will be undertaken;*
- *To owners and occupiers of land within 100 metres of the boundary of the property;*
- *To the municipal councillor of the ward in which the property is situated;*
- *To any organisation of ratepayers that represents the community in the area;*
- *To the municipality which has jurisdiction in the area; and*
- *To any organ of state which has jurisdiction in respect of any aspect of the activity.*

The Environmental Assessment Practitioner (EAP) managing the application must give registered I&AP's access to and an opportunity to comment in writing on the scoping report.

PUBLIC PARTICIPATION PROCESS FOLLOWED TO DATE

Distribution of Letters, Background Information Documents and Registration / Comment sheets were sent to key stakeholders via fax, post and email from 29 January to date.

The Draft Scoping Report was made available for review from 20 February - 20 March 2009 .

Issues identified

- The following issues were identified through the Public Participation Process:
 - Impacts on flora and fauna;
 - Management of hazardous waste;
 - Cumulative impacts of the proposed development;
 - Properties to be affected; and
 - Impacts on agricultural soil.

Way Forward

- Public and focus group meetings (**today**)
- Finalisation and submission of the scoping report and PoS for EIA – **end of March 09**
- Preparation of EIR - March – **May 09**
- Public Review of draft EIR (specialist findings) – **June 09**
- Submission of EIR – **Sept/Oct 09**
- Decision and appeals - **Oct /Nov 09**

Questions, Comments and Suggestions

THANK YOU!!!!

