

**NOTES:**

1. THE PROPERTY TO BE FENCED-OFF WITH A STANDARD BOUNDARY TYPE FENCE 1.2m HIGH CONSISTING OF 6 RINGS OF SINGLE 4.1.1 STEEL STRAND GALV. WIRE BEFORE COMMENCEMENT OF ANY CONSTRUCTION ACTIVITIES.
2. CUT-OFF DRAINS AROUND THE PROPOSED CONSTRUCTION SITE TO BE INSTALLED TO MINIMIZE THE RISK OF POLLUTION OF RUNOFF WATER ONTO AND OFF THE CONSTRUCTION SITE.
3. THE DRAINAGE SYSTEM CONSIST OF A NETWORK OF SUBSOIL DRAINS CONNECTED TO CONCRETE PIPES WHICH ARE LINKED TO OUTLET STRUCTURES WITH A STILLING BASIN AND GRASSED SPREADER BOX BEFORE THE WATER RUNS TO THE NATURAL WATER COURSES.
4. THE FIRE PROTECTION SYSTEM CONSIST OF A PIPE NETWORK TO CONVEY OIL IN THE CASE OF A OIL SPILL TO THE OPEN OIL HOLDING DAM FROM WHERE THE OIL CAN BE RECOVERED WITHOUT THE RISK OF POLLUTION.
5. SIDES OF TERRACES COVERED WITH TOPSOIL TO BE GRASSED, OR AREAS USED FOR CONSTRUCTION SITES AND STORAGE/STOCKPILE TO BE REHABILITATED AFTERWARDS AND GRASSED.

**LEGEND**

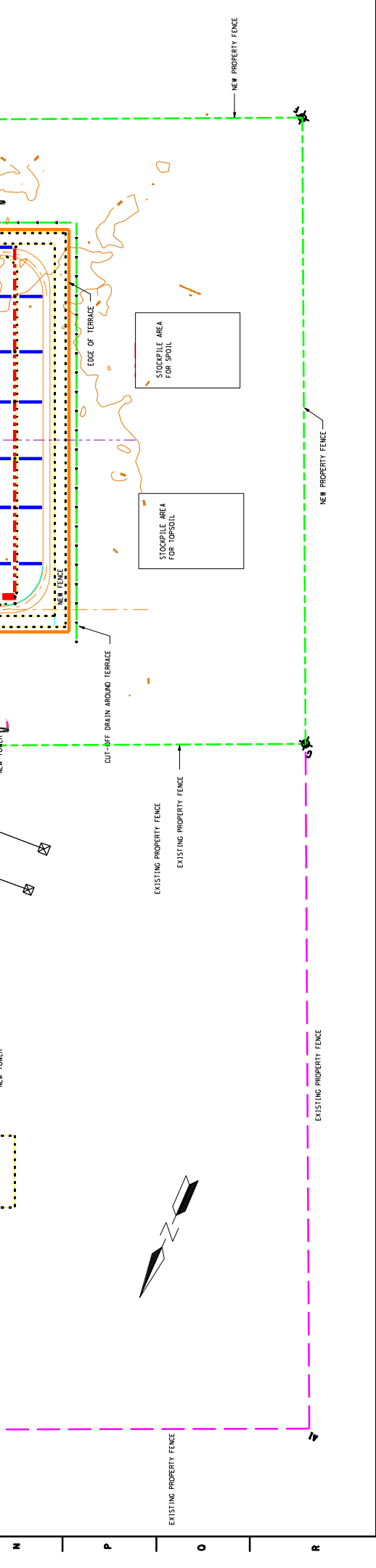
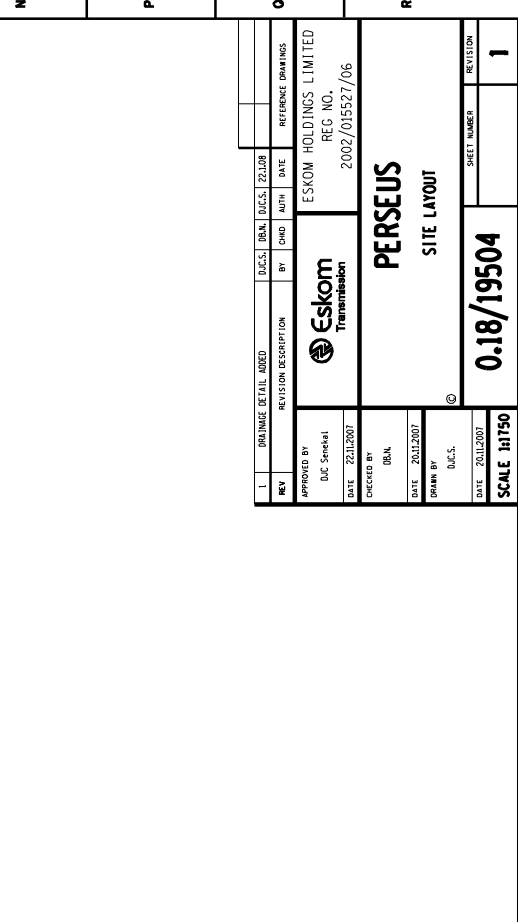
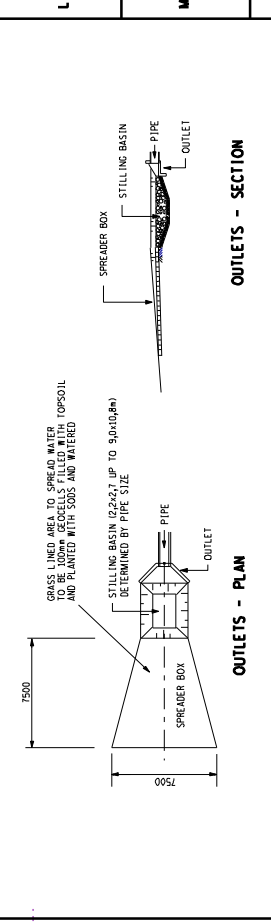
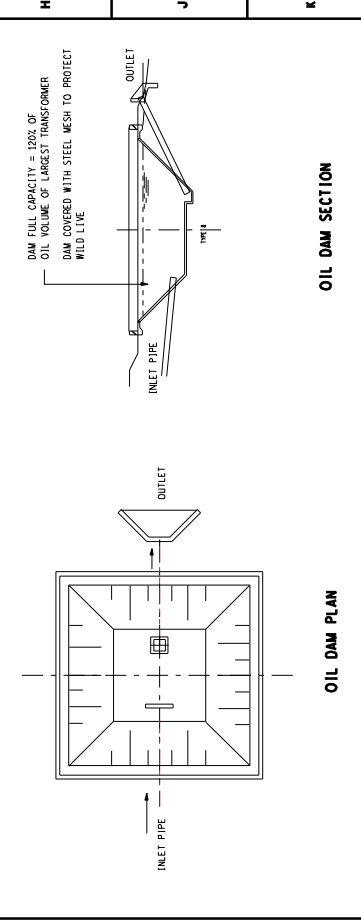
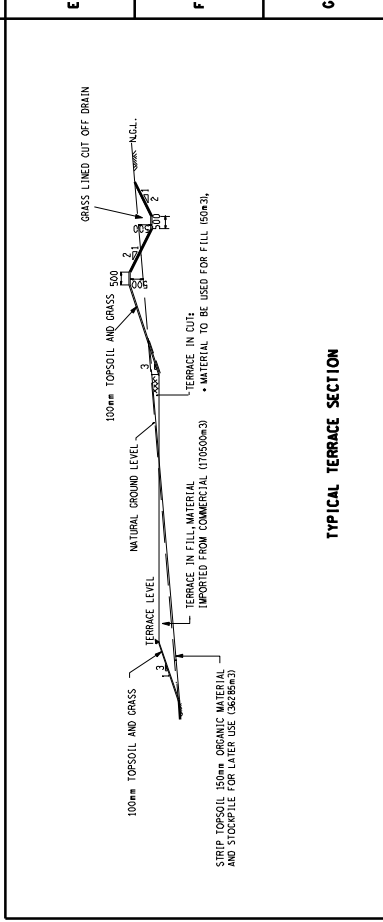
- OIL DRAINAGE: 800mm CLASS 500 SPIGOT AND SOCKET PIPES WITH NEOPRENE RINGS LAD ON CLASS 8 BEDDING
- STORM WATER DRAINAGE: VARIOUS DIAMETER CONCRETE PIPES CLASS 500 ON TYPE 8 BEDDING
- SUBSOIL DRAIN: 100mm Ø 150mm Ø 160mm Ø 180mm Ø 200mm Ø 225mm Ø 250mm Ø 275mm Ø 300mm Ø 325mm Ø 350mm Ø 375mm Ø 400mm Ø 450mm Ø 500mm Ø 550mm Ø 600mm Ø 650mm Ø 700mm Ø 750mm Ø 800mm Ø 850mm Ø 900mm Ø 950mm Ø 1000mm Ø 1050mm Ø 1100mm Ø 1150mm Ø 1200mm Ø 1250mm Ø 1300mm Ø 1350mm Ø 1400mm Ø 1450mm Ø 1500mm Ø 1550mm Ø 1600mm Ø 1650mm Ø 1700mm Ø 1750mm Ø 1800mm Ø 1850mm Ø 1900mm Ø 1950mm Ø 2000mm Ø 2050mm Ø 2100mm Ø 2150mm Ø 2200mm Ø 2250mm Ø 2300mm Ø 2350mm Ø 2400mm Ø 2450mm Ø 2500mm Ø 2550mm Ø 2600mm Ø 2650mm Ø 2700mm Ø 2750mm Ø 2800mm Ø 2850mm Ø 2900mm Ø 2950mm Ø 3000mm Ø 3050mm Ø 3100mm Ø 3150mm Ø 3200mm Ø 3250mm Ø 3300mm Ø 3350mm Ø 3400mm Ø 3450mm Ø 3500mm Ø 3550mm Ø 3600mm Ø 3650mm Ø 3700mm Ø 3750mm Ø 3800mm Ø 3850mm Ø 3900mm Ø 3950mm Ø 4000mm Ø 4050mm Ø 4100mm Ø 4150mm Ø 4200mm Ø 4250mm Ø 4300mm Ø 4350mm Ø 4400mm Ø 4450mm Ø 4500mm Ø 4550mm Ø 4600mm Ø 4650mm Ø 4700mm Ø 4750mm Ø 4800mm Ø 4850mm Ø 4900mm Ø 4950mm Ø 5000mm Ø 5050mm Ø 5100mm Ø 5150mm Ø 5200mm Ø 5250mm Ø 5300mm Ø 5350mm Ø 5400mm Ø 5450mm Ø 5500mm Ø 5550mm Ø 5600mm Ø 5650mm Ø 5700mm Ø 5750mm Ø 5800mm Ø 5850mm Ø 5900mm Ø 5950mm Ø 6000mm Ø 6050mm Ø 6100mm Ø 6150mm Ø 6200mm Ø 6250mm Ø 6300mm Ø 6350mm Ø 6400mm Ø 6450mm Ø 6500mm Ø 6550mm Ø 6600mm Ø 6650mm Ø 6700mm Ø 6750mm Ø 6800mm Ø 6850mm Ø 6900mm Ø 6950mm Ø 7000mm Ø 7050mm Ø 7100mm Ø 7150mm Ø 7200mm Ø 7250mm Ø 7300mm Ø 7350mm Ø 7400mm Ø 7450mm Ø 7500mm Ø 7550mm Ø 7600mm Ø 7650mm Ø 7700mm Ø 7750mm Ø 7800mm Ø 7850mm Ø 7900mm Ø 7950mm Ø 8000mm Ø 8050mm Ø 8100mm Ø 8150mm Ø 8200mm Ø 8250mm Ø 8300mm Ø 8350mm Ø 8400mm Ø 8450mm Ø 8500mm Ø 8550mm Ø 8600mm Ø 8650mm Ø 8700mm Ø 8750mm Ø 8800mm Ø 8850mm Ø 8900mm Ø 8950mm Ø 9000mm Ø 9050mm Ø 9100mm Ø 9150mm Ø 9200mm Ø 9250mm Ø 9300mm Ø 9350mm Ø 9400mm Ø 9450mm Ø 9500mm Ø 9550mm Ø 9600mm Ø 9650mm Ø 9700mm Ø 9750mm Ø 9800mm Ø 9850mm Ø 9900mm Ø 9950mm Ø 10000mm
- PIPE OUTLET STRUCTURE - FOR DETAILS SEE DRG. 054/290 (A.1)

**EXISTING PROPERTY CO-ORDINATES**  
SYSTEM WGS 84 Ld 25°

POINT	Y	X
A	-72 315.061	3 168 944.627
B	-73 101.565	3 168 593.887
C	-73 210.165	3 169 375.918
D	-72 622.943	3 169 634.541

**PROPOSED ADDITIONAL PROPERTY CO-ORDINATES**  
SYSTEM WGS 84 Ld 25°

POINT	Y	X
E	-73 274.371	3 169 834.819
F	-72 490.329	3 170 183.897
G	-72 256.627	3 169 658.993
H	-72 571.558	3 169 518.777
AI	-72 300.337	3 169 084.73



**ESKOM HOLDINGS LIMITED**  
REG. NO. 2002/015527/06

**PERSEUS**  
SITE LAYOUT

**SCALE 1:1750**

DATE: 2011/2007  
DRAWN BY: D.C.S.  
CHECKED BY: D.C.S.