



**SCOPING AND ENVIRONMENTAL IMPACT ASSESSMENT FOR THE PROPOSED CONSTRUCTION OF A
400KV TRANSMISSION POWER LINE FROM APOLLO SUBSTATION TO LEPINI SUBSTATION,
EKURHULENI METROPOLITAN MUNICIPALITY, GAUTENG**

**BACKGROUND INFORMATION DOCUMENT (BID)
AND INVITATION TO COMMENT**



PROPOSED CONSTRUCTION OF A 400KV TRANSMISSION POWER LINE, EKURHULENI METROPOLITAN MUNICIPALITY, GAUTENG

Introduction and background

In order to reduce the network constraints in the Ekurhuleni Metropolitan Municipality, **Eskom Holdings Ltd** proposes to construct a 400kV transmission power line, 30km in length, from Apollo Substation to Lepini Substation in Ekurhuleni Metropolitan Municipality, Gauteng.

Motivation for the project

The power lines from Minerva to Lepini and Minerva to Craighall are the biggest constraint on the Johannesburg North corridor. An existing 275kV power line will not be able to supply the future load in the Johannesburg North area therefore necessitating network strengthening to be undertaken which involves the establishment of additional power lines into the area. Due to the difficulty in obtaining servitudes in the Central Grid, a 400kV power line operated at 275kV will be the best strategic strengthening option. The advantage of this proposed solution is that it provides a different source, Apollo Substation, into the part of Johannesburg network formed by Craighall and Lepini 275kV ring. Therefore, the line from Apollo to Lepini servitude will be required to accommodate a 400kV line.

Location

As per Figure 1, there are four proposed routes. The study area includes the towns/districts of Olifantsfontein, Thembisa and Clayville. The study area falls within the jurisdiction of the Ekurhuleni Metropolitan Municipality.

Purpose of this document

The purpose of this document aims to:

- Provide all interested and affected parties (I&APs) with information about the proposed construction of a 400kV transmission line, 30km in length, from Apollo Substation to Lepini Substation in Ekurhuleni Metropolitan Municipality, Gauteng.

Environmental Consultant

Eskom Holdings Ltd has appointed Enviroolution Consulting (Pty) Ltd, an independent environmental consultant, to conduct the Scoping and Environmental Impact Assessment which aims to identify and assess all potential environmental impacts associated with the proposed project; as well as identify and propose mitigation measures in an Environmental Management Plan (EMP). Included is the public participation process which aims at addressing concerns / issues raised by the public in regard to the proposed project.

PROPOSED CONSTRUCTION OF A 400 KV TRANSMISSION POWER LINE, EKURHULENI METROPOLITAN MUNICIPALITY, GAUTENG

What is a Scoping-Environmental Impact Assessment (EIA)?

An EIA is a good planning and decision-making tool. It is able to identify the environmental impacts of a proposed project, and helps to ensure that the project, over its life cycle, will be environmentally acceptable and integrated into the surrounding environment in a sustainable manner.

The Scoping-EIA Process

The Scoping EIA process involves a complex and intensive assessment of the potential impacts of the proposed activity. The process takes place in 3 broad phases namely the registration of the project with the relevant authorities, scoping and EIA. The aforementioned phases are illustrated in Figure 2.

Public participation process

The key objective of public participation during an EIA is to assist stakeholders to identify issues of concern; make suggestions for enhanced benefits; and to comment on the proposed project.

The public participation process:

- Provides an opportunity for interested and affected parties (I & AP's) to obtain a clear, accurate and comprehensive information about the proposed activity and the environmental impacts thereof;
- Provides I & AP's with an opportunity to indicate their viewpoints regarding the activity or decision;
- Provides I & AP's with the opportunity of suggesting ways of avoiding, reducing or mitigating negative impacts of an activity and for enhancing positive impacts;
- Enables the applicant to incorporate the needs, preferences and values of affected parties into the activity;
- Enhances transparency and accountability in decision-making

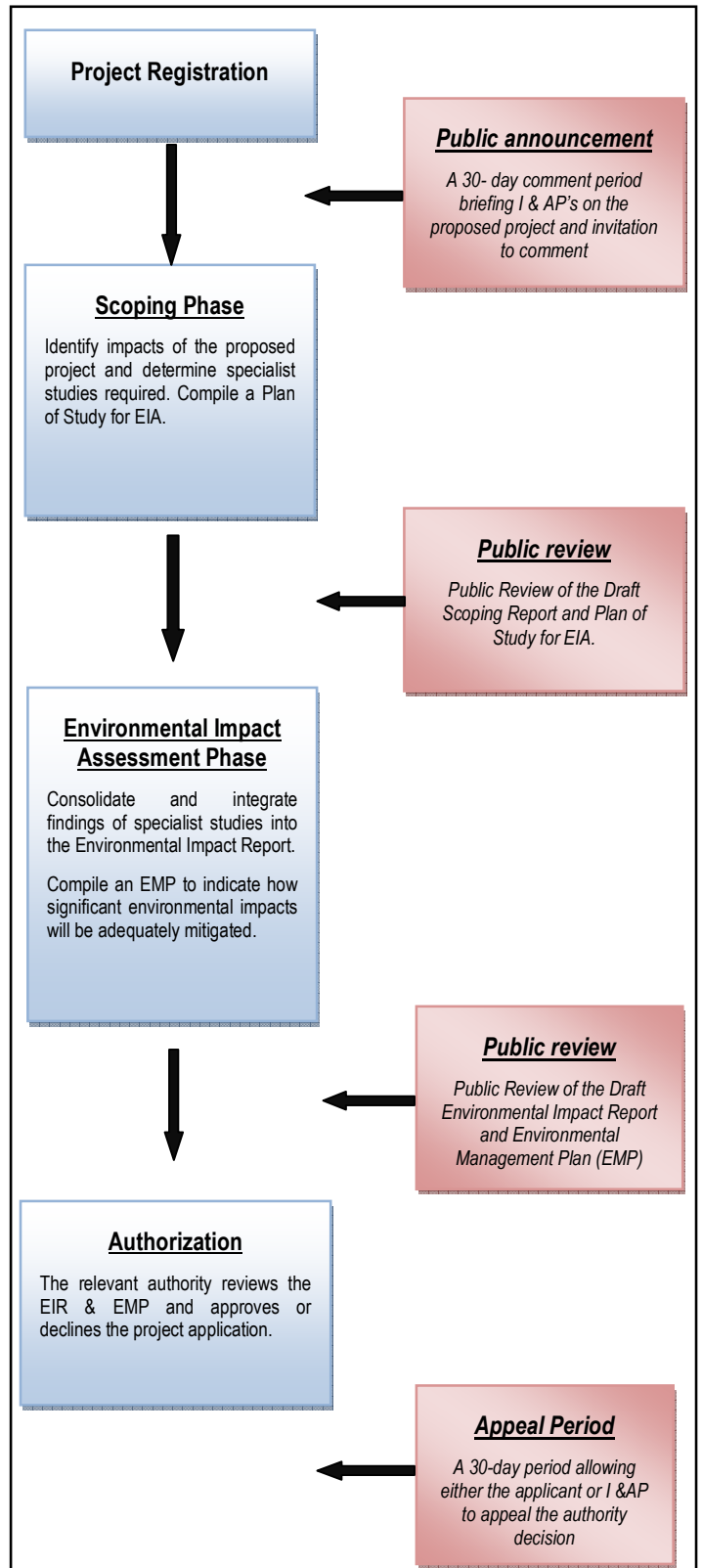


Figure 2: Flowdiagram of Scoping EIA Process and involvement of the public

PROPOSED CONSTRUCTION OF A 400KV TRANSMISSION POWER LINE, EKURHULENI METROPOLITAN MUNICIPALITY, GAUTENG

Legal requirements for this Scoping and Environmental Impact Assessment

In accordance with the requirements of the National Environmental Management Act (NEMA) (Act No 107 of 1998), Eskom Holdings Ltd requires the approval from the Competent Authority, in this case the Gauteng Department of Agriculture, Conservation and Environment (GDACE), to undertake this development.

Government Notice Number Regulations (GNR) 386 and 387 of 2006 list specific activities which require approval from the GDACE. For the purpose of this project the following listed activities are anticipated to be applicable for the proposed construction:

R. 386

Item 1 (m): “The construction of facilities or infrastructure, including associated structures or infrastructure, for any purpose in the one in ten year flood line of a river or stream, or within 32 metres from the bank of a river or stream where the flood line is unknown, excluding purposes associated with existing residential use, but including canals; channels; bridges; dams; and weirs.”

Item 7: “The above ground storage of a dangerous good, including petrol, diesel, liquid petroleum gas or paraffin, in containers with a combined capacity of more than 30 cubic metres but less than 1 000 cubic metres at any one location or site.”

Item 12: “The transformation or removal of indigenous vegetation of 3 hectares or more or of any size where the transformation or removal would occur within a critically endangered or an endangered ecosystem listed in terms of section 52 of the National Environmental Management: Biodiversity Act, 2004 (Act No. 10 of 2004).”

Item 15: “The construction of a road that is wider than 4 metres or that has a reserve wider than 6 metres, excluding roads that fall within the ambit of another listed activity or which are access roads of less than 30 metres long.”

Item 16: “The transformation of undeveloped, vacant or derelict land to:

- (a) establish infill development covering an area of 5 hectares or more, but less than 20 hectares; or
- (b) residential, mixed, retail, commercial, industrial or institutional use where such development does not constitute infill and where the total area to be transformed is bigger than 1 hectare.”

Potential issues for investigation

Potential environmental impacts associated with the proposed project will be assessed through the following specialist studies:

- Geological Assessment;
- Ecological Assessment;
- Agricultural Assessment;
- Avifaunal Assessment;
- Archaeological Assessment;
- Social Impact Assessment; and
- Visual Impact Assessment.

Contact information

To register and for more information please contact the following persons:

Ms Netisha Chetty

Envirolution Consulting (Pty) Ltd

Tel: 0861 444 499, Fax: 0861 626 222 or E-mail:

netisha@envirolution.co.za

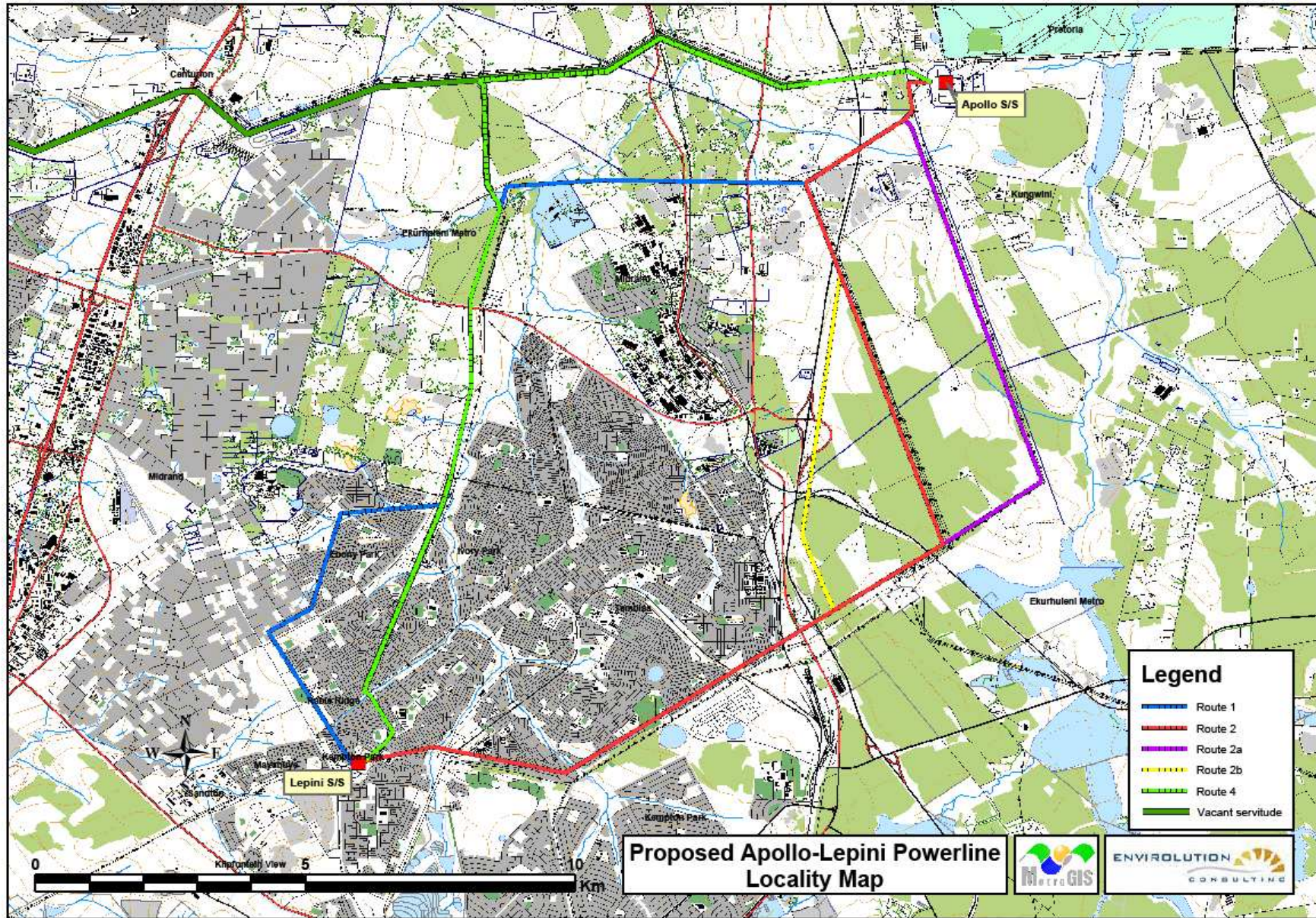


FIGURE 1: PROPOSED STUDY AREA