

Figure 1 Sensitivity map showing areas that are ideal, acceptable and sensitive in terms of hydrogeological impacts.

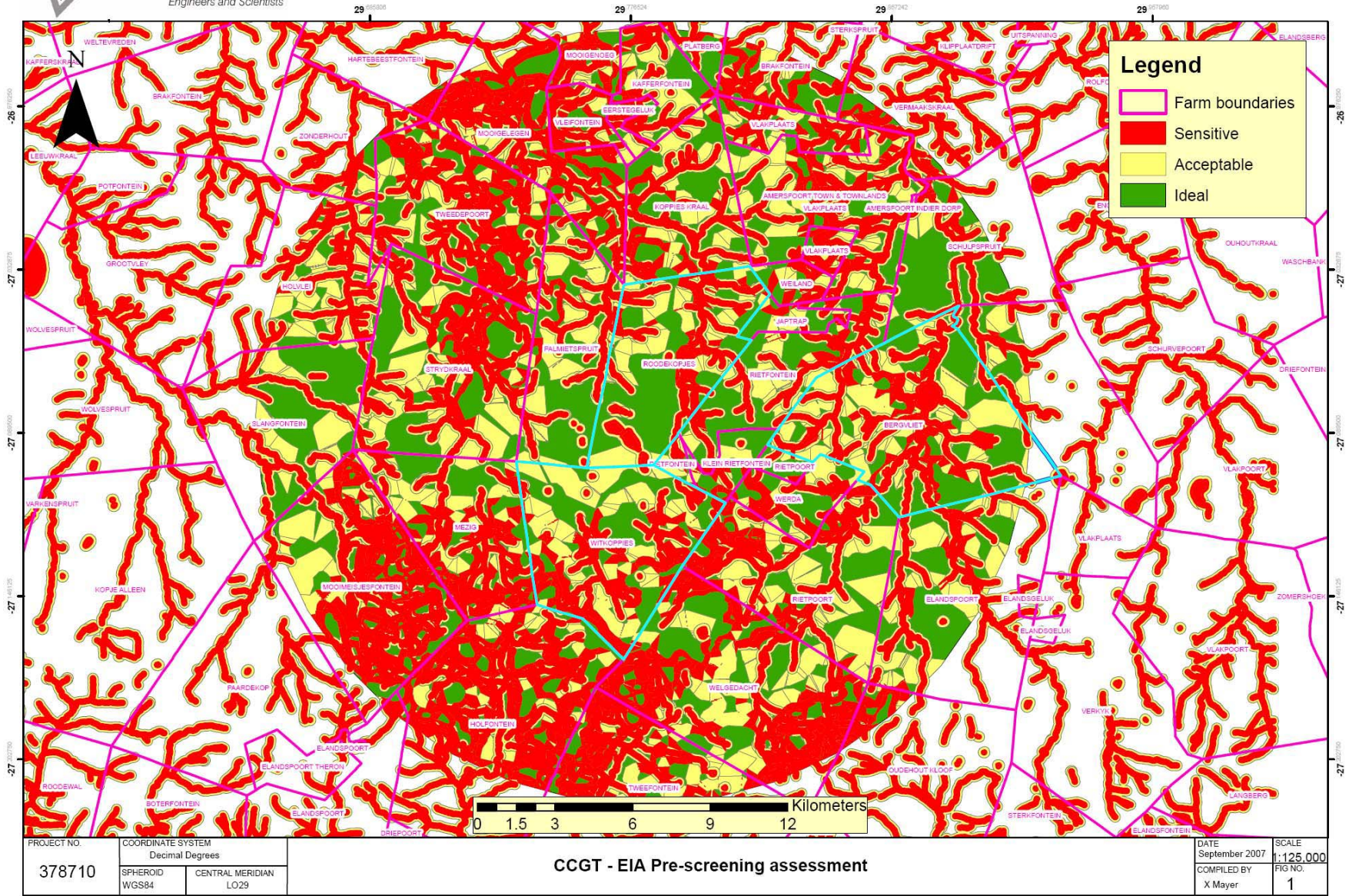


Figure 2 Sensitivity map showing areas that are ideal, acceptable and sensitive in terms of hydrological impacts.

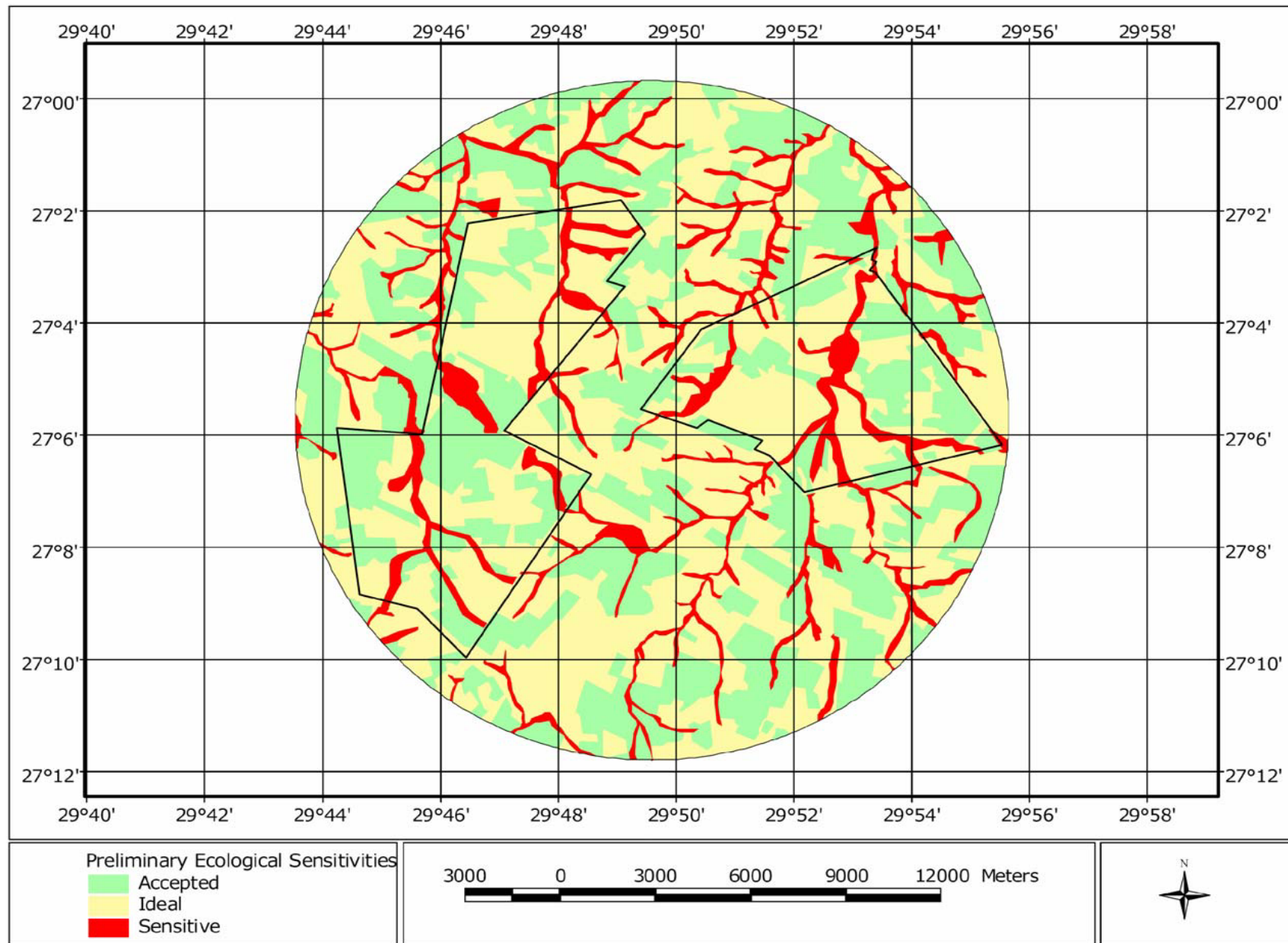


Figure 3 Sensitivity map showing areas that are ideal, acceptable and sensitive in terms of biodiversity impacts.

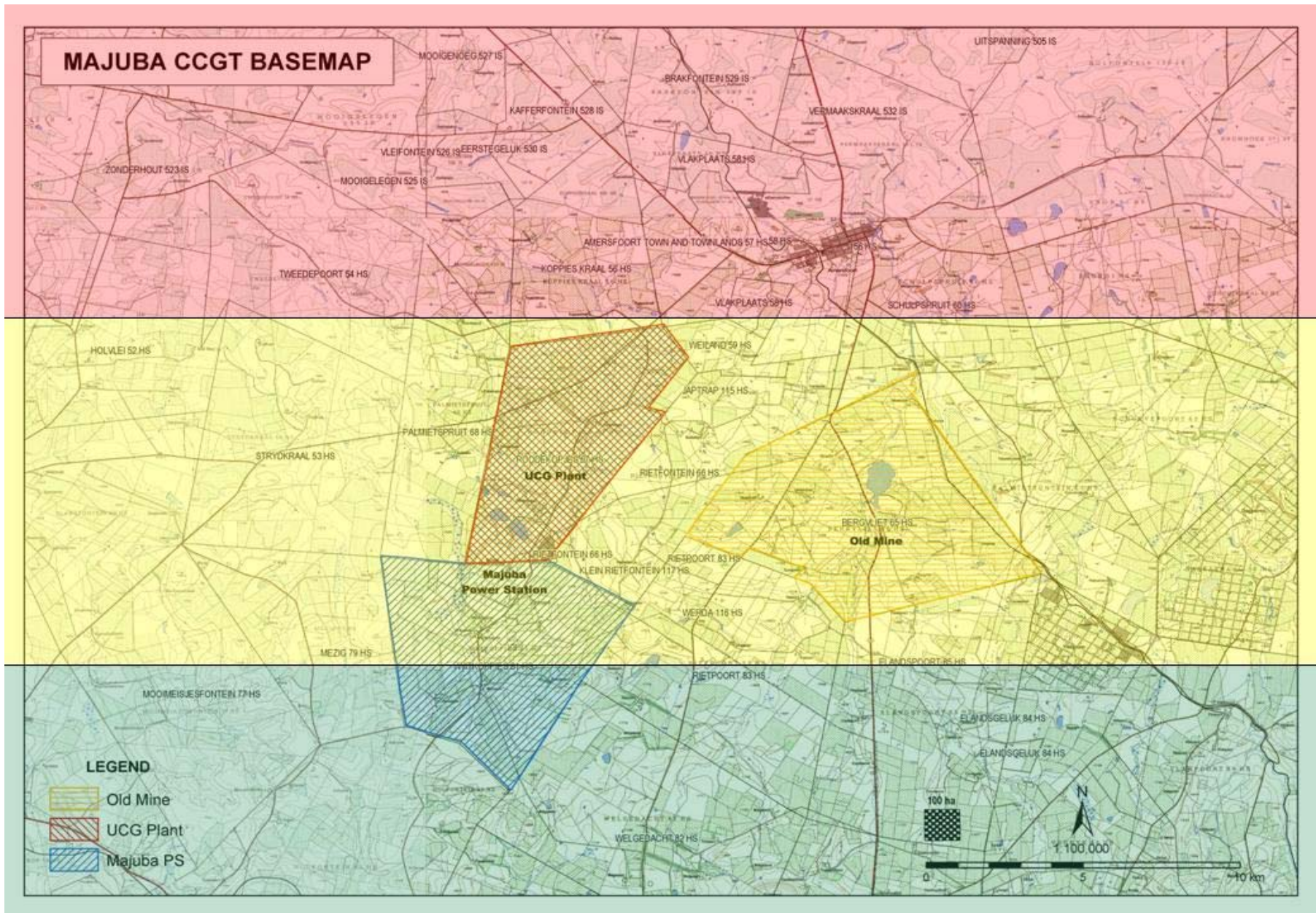


Figure 4 Sensitivity map showing areas that are ideal, acceptable and sensitive in terms of air quality impacts.

