

B18 701e.360
sta=20419.70
X=69081.35
Y=-3175446.97
B18

B19 702b.375
sta=20920.56
X=68784.36
Y=-3175850.28
B19

B20 702b.375
sta=21439.15
X=68476.87
Y=-3176267.87
B20

B21 702b.360
sta=21932.93
X=68184.08
Y=-3176665.48
B21

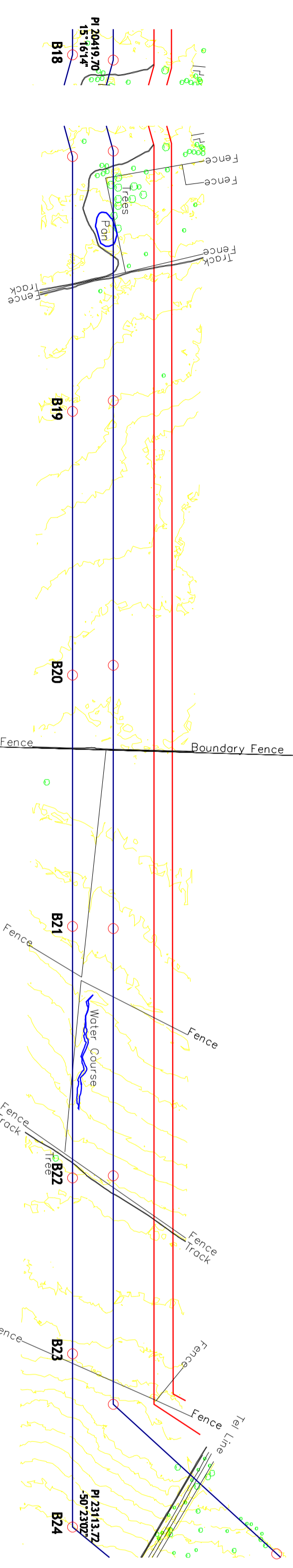
B22 702b.375
sta=22427.61
X=67890.76
Y=-3177063.81
B22

B23 702b.315
sta=22773.40
X=67685.72
Y=-3177342.26
B23

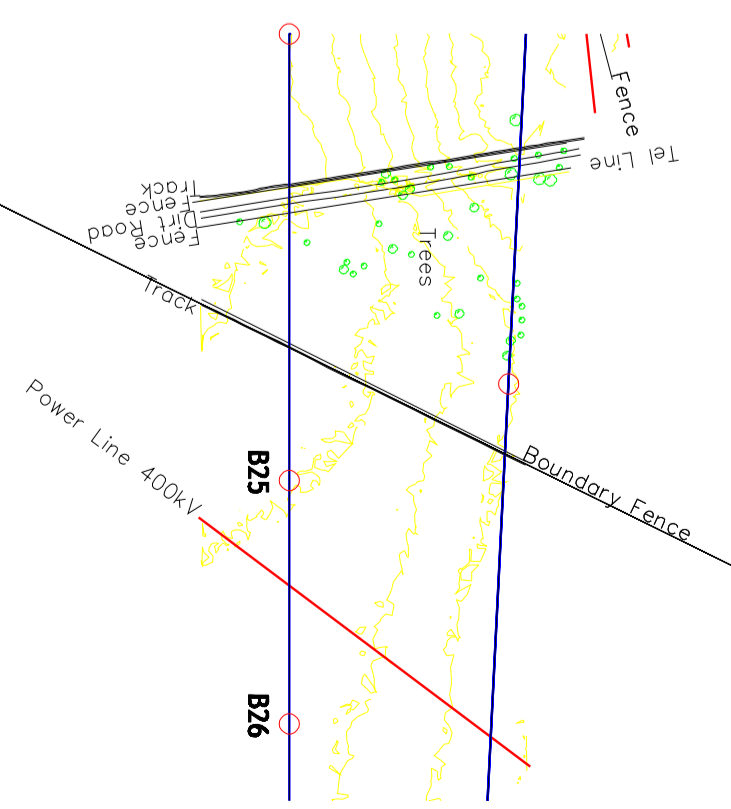
B24 701g.315
sta=23113.72
X=67483.93
Y=-3177616.29
B24

B25 702b.390
sta=23550.92
X=67589.83
Y=-3178040.49
B25

B26 702b.375
sta=23789.50
X=67647.62
Y=-3178271.96
B26



WALVISCHKUL 749//0
HPJ PIETERSE
082 818 2320
Contact owner prior to construction.
No fires, littering or poaching.
Use mobile toilets.
Stay on servitude.



Drawing No: PRELIM PROFILES

**BETA PERSEUS
765kV TRANSMISSION LINE**

DATE:
December 2007

Revision Information:
Rev A - Preliminary Profiles
Rev B - Points revised at start of line
Rev C - Tower height and type changes

Structure Family: 701, 702 towers
Conductor: 6 Tem
Templating Temperature: 70 Degrees

Sheet 7/8

Engineer Line Design
Senior Environmental Advisor:
Field Environmental Data:
Negotiator:
Survey:
Mapping:
Profiles Approved: