

Land & Rights

Presentation on the Kudu Integration Project

Background

Nampower:

- Namibia gas field at Kudu
- Plans to construct a new 800MW power station at Oranjemund
- Requires only 200MW to secure their own supply
- Nampower has offered the balance to Eskom for integration into the SA National Grid

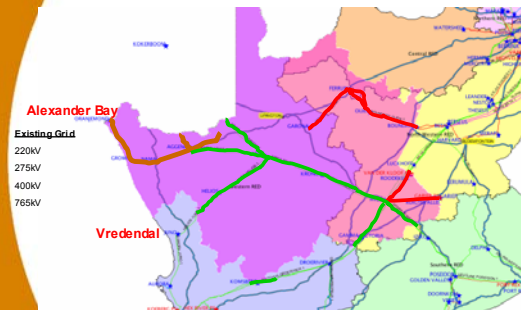
Need & desirability

- Eskom is running out of excess capacity
- There is a definite need for additional generation capacity in the region (Eskom and NamPower)
- Namaqua is supplied with a single line from Kenhardt to Alexander Bay through a single point
 - If line is faulty, supply to Namaqualand is lost, if line needs maintenance the line will be shut down
 - aging infrastructure, operating in a harsh environment will cause major refurbishment and resulting in major outages
- Namaqualand, Southern & Western Cape provinces are supplied through a single point from De Aar
- This is already heavily loaded and will reach full capacity soon – new transmission lines need to be built soon to Namaqualand, the Southern & Western Cape
- It is preferable to have more reliable, local generation supply
- Even if existing transmission infrastructure was adequate, nationally running out of capacity – need a new power station

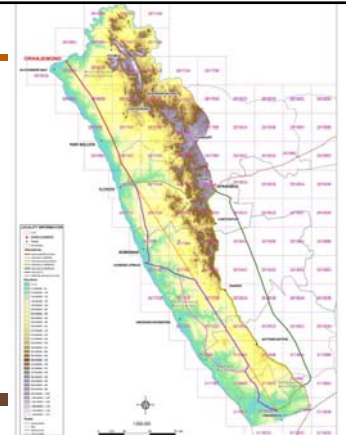
Project description

- Two lines (400kV & 200kV) across river to Oranjemond substation at Alexander Bay
- Single line (400kV) from Oranjemond substation to Juno substation at Vredendal

Current lines



Study area



EIA process

- **Public participation** began on 23 January 2006
- **Newspaper advertisements** (Die Burger, Ons Kontrei & Volksblad) notifying the public of the EIA process & requesting I&AP's to register

EIA process cont.

- **Site notices** including pamphlets and BIDs were erected at visible locations within towns throughout the study area (24-27 January 2006)
- **Direct notification** - key stakeholders directly informed by email, post and fax on 23 January 2006 (e.g. authorities, service providers, residential associations, NGOs and conservation agencies)
- **Four alternatives (A-D)** identified during Scoping
- **Draft Scoping Report** provided for comment on 8 April 2006
- **5th alternative (E)** identified during authority integration meeting in May 2006
- Registered I&APs were informed of 5th alternative by fax, post and email on 25 May and comment period extended to 9 June 2006

EIA process cont.

- **Approval of Scoping Report** by DEAT June 2006
- **Meeting with Sanparks** in September 2006 to discuss NNP planning – indicated unwillingness to allow any line through the area earmarked for park expansion
- **Approval of PoS (July 2006)** for EIA required additional alternatives around the NNP to be investigated
- **Alternatives F & G** identified

EIA process cont.

- **Draft EIR** sent directly to all key stakeholders, incl. DEAT, N. Cape, W.Cape, Sanparks, CapeNature, Botsoc, WESSA and to other I&APs on request
- **Meeting for discussion of draft EIR** - on request: three meetings held on 8 & 9 February 07 (De Beers, Knersvlakte Bewaringskommittee & Farmers at Garies - latter also attended by Sanparks & CapeNature)

EIA process cont.

- **Deeds search** to identify owners along new alternatives and added to the I&AP database & informed
- **Draft EIR** provided for public comment from 22 November 2006 to 21 January 2007 – extended for those I&APs that requested it

Site notices (see handout)

TOWN NAME	NUMBER OF SITE NOTICES	NUMBER OF P & BID PACKAGES
Vaughanstad	2	30
Nuwerus	2	20
Blaarfontein	1	20
Garies	2	40
Kamieskroon	1	20
Springbok	4	60
Nauwpoort	1	20
Olkes	1	20
Steinkopf	1	20
Eksteenfontein	1	20
Kuboes	1	20
Alexanderbaai	2	40
Pompejebaai	4	60
Wolfsbaai (Gardiesburg) and Garies	1	20
Groene Suidbaai	1	20
Bullefontein	2	40
Komaggas	1	20
Sebakfontein	1	20
Koingnas	1	20
Hondebaai	1	30
Koorenep	1	30
Ladysmith	1	30
Vredendal	2	40
TOTAL 23 towns	35 Site notices	660 BID's

Meetings held

Type of meeting / participants	Venues	Date
Open day & public meeting	Port Nolloth	7 Feb 2006
Open day & public meeting	Gates x 2	9 Feb 2006
Focus group: Sanparks, CapeNature, Kamieskroon Hotel	Kamieskroon	2 Mar 2006
CapeNature, Griekwa Ratelgat Ontwikkelingstrust, Knersvlakte Biostreek, Matzikamma Toerisme, individuals	Vanrhynsdorp	2 Mar 2006
Authority meeting: Specialists, DEA&DP, DEAT (N. Cape invited) to present draft scoping report	Cape Town	5 May 2006
Key stakeholder meeting	Sanparks, Pta	12 Sep 2006
Knersvlakte Bewaringskomitee (CapeNature, Matzikamma Municipality, Dept. of Agriculture)	Vanrhynsdorp	8 Feb 2007
Key stakeholder: De Beers	Gates	8 Feb 2007
Public meeting: Individual farmers & farmers associations, Cape Nature, Sanparks	Gates	9 Feb 2007

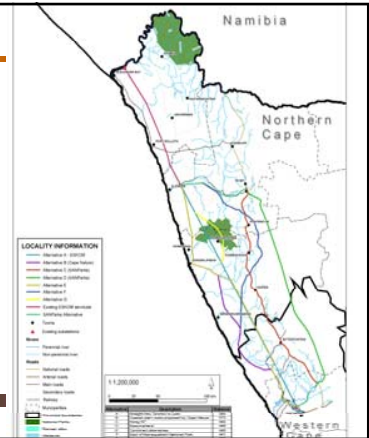
13

Key stakeholders (see handout for full list)

- Sanparks (Richtersveld & Namaqua National Parks)
- CapeNature
- All local and district municipalities (Nama Khoi, Matzikamma, Richtersveld, West Coast, Namaqua, Kamiesberg, Cederberg)
- Ward councillors
- Alexkor & De Beers
- Community-based organisations (e.g. Richtersveld Traditional Nama Council & Richtersveld Community Property Association)
- Farmers associations & organised agriculture
- Conservation NGOs: Botsoc & WESSA
- SA Heritage Resource Agency (provincial offices)

14

Alternatives



Alternatives

Ait.	Reason for inclusion	Status
A	Shortest & cheapest route	Not preferred. High impact on NNP & quartz patches.
B	Mostly aligned along existing disturbance. Identified by CapeNature	Preferred (together with E)
C	Along N7 (existing disturbance) – identified by Sanparks	Very expensive, erosion impact in mountains. Main tourist route. High visual impact - large no. of strain towers.
D	Avoids Namaqualand (Sanparks)	Distance, unacceptable botanical impacts on Hardeveld & Knersvlakte. Impacts not necessarily lower just because it crosses through Bushmanland.
E	Mostly aligned along existing disturbance	Mostly through disturbed mining areas. Southern variation near Juno along existing roads & other disturbance. Avoids quartz patches.
F	Avoidance of Namaqua National Park	Unacceptable impacts on endemics in Kamiesberg
G	Avoids Soebatsfontein (hub of NNP)	Unacceptable to Sanparks due to tourism impact – scenic mountainous area in NNP

17

Main issues & recommendations

Social impacts:

- Lack of benefits (no electricity) to local inhabitants and communities
- Impact on mining activities
- Disruption of farming activities
- Compensation for servitude registration
- Visual impacts: experts consider impact highest on the coastal plain, but locals consider it highest along mountainous areas next to N7 (tourist route)
- Heritage impacts probably minimal but uncertain – can only be confirmed during walkdown of preferred route
- Impact on tourism (current and planned)
- Eskom must seriously investigate the **possibility for providing electricity to locals**
- High-level negotiations between Eskom and **mining houses** regarding route over mining land
- **Combination of alternatives** in disturbed area, mainly closer to coast recommended
- **2nd stage assessment** prior to issue of Record of Decision
 - To confirm whether impacts can be mitigated to acceptable levels
 - to be undertaken in the form of a specialist walk-down of recommended route to assess impacts in detail. Conservation offset for northern portion between Oranjemond and Gromis

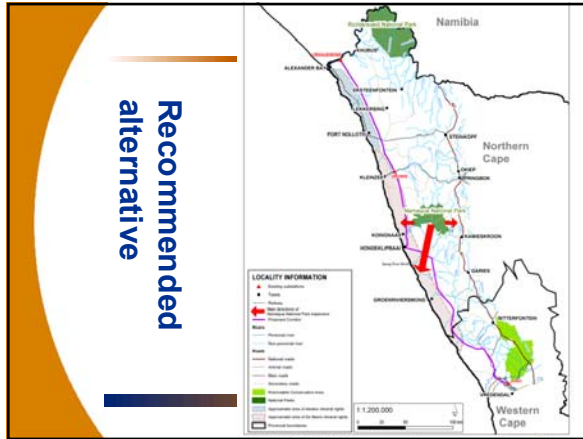
17

Main issues & recommendations

Biophysical impacts:

- Succulent Karoo is a globally important centre of endemism – esp. quartz patches are sensitive
- Impacts on existing and planned conservation areas (NNP and Knersvlakte)
- Very sensitive area between Oranjemond and Gromis substations – need to establish offset conservation area
- Bird strikes - can be easily mitigated
- Soil erosion (sandy soils near the coast and mountainous areas)
- **Compensation** to Sanparks by providing area of land at least the same in size as the area of the servitude through the NNP
- Construction materials to be **flow n** in along Oranjemond-Gromis section to prevent trampling & erosion

18



Current status

- Comments on draft EIR incorporated in comments & response report
- Final EIR to be finalised, provided for information and submitted to authorities
- Subject to further comments received