

**Figure 1. Topography of the study area showing two possible alternatives for the Transmission Line alignment (amsl).**

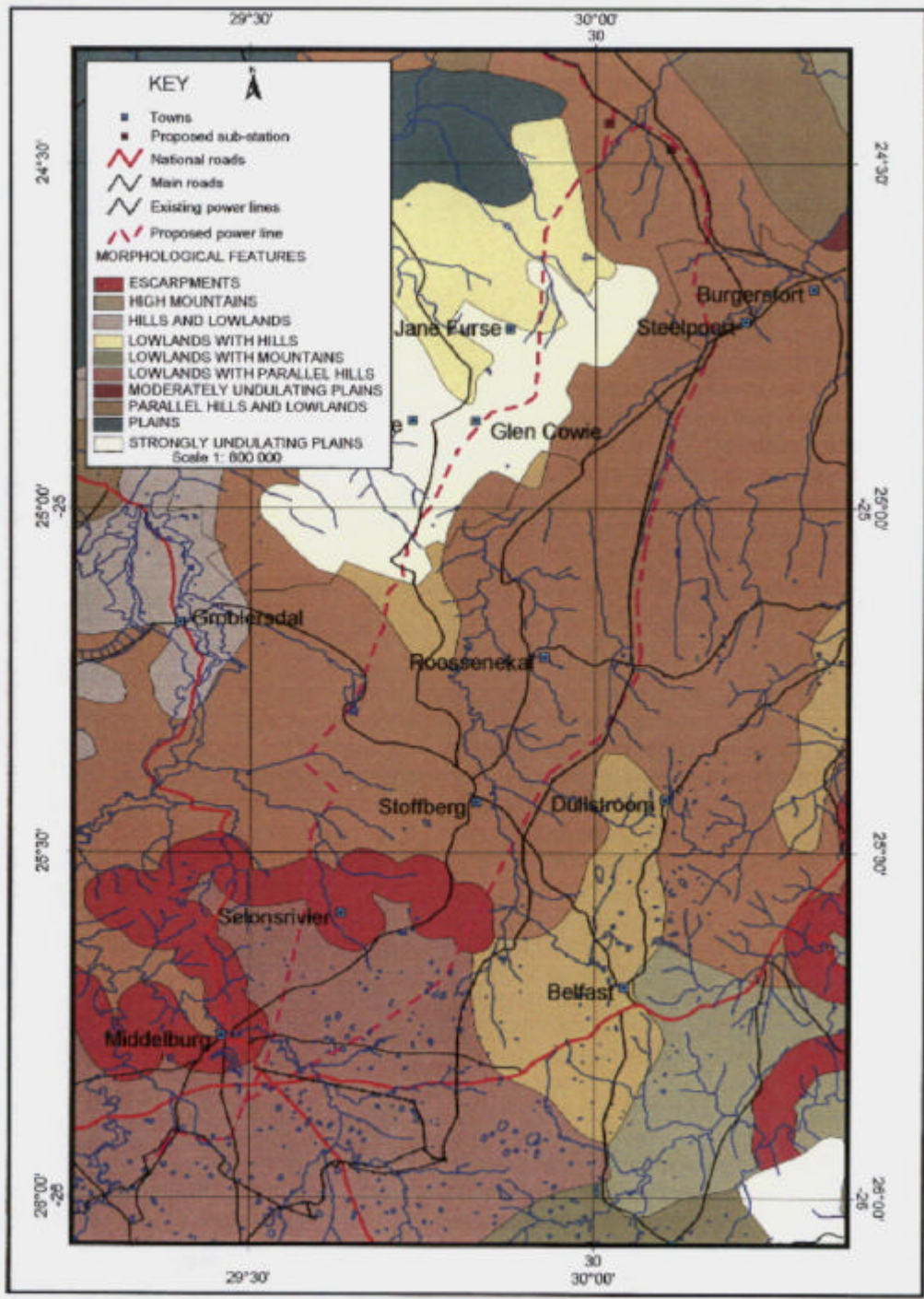


Figure 2. Morphological features of the study area



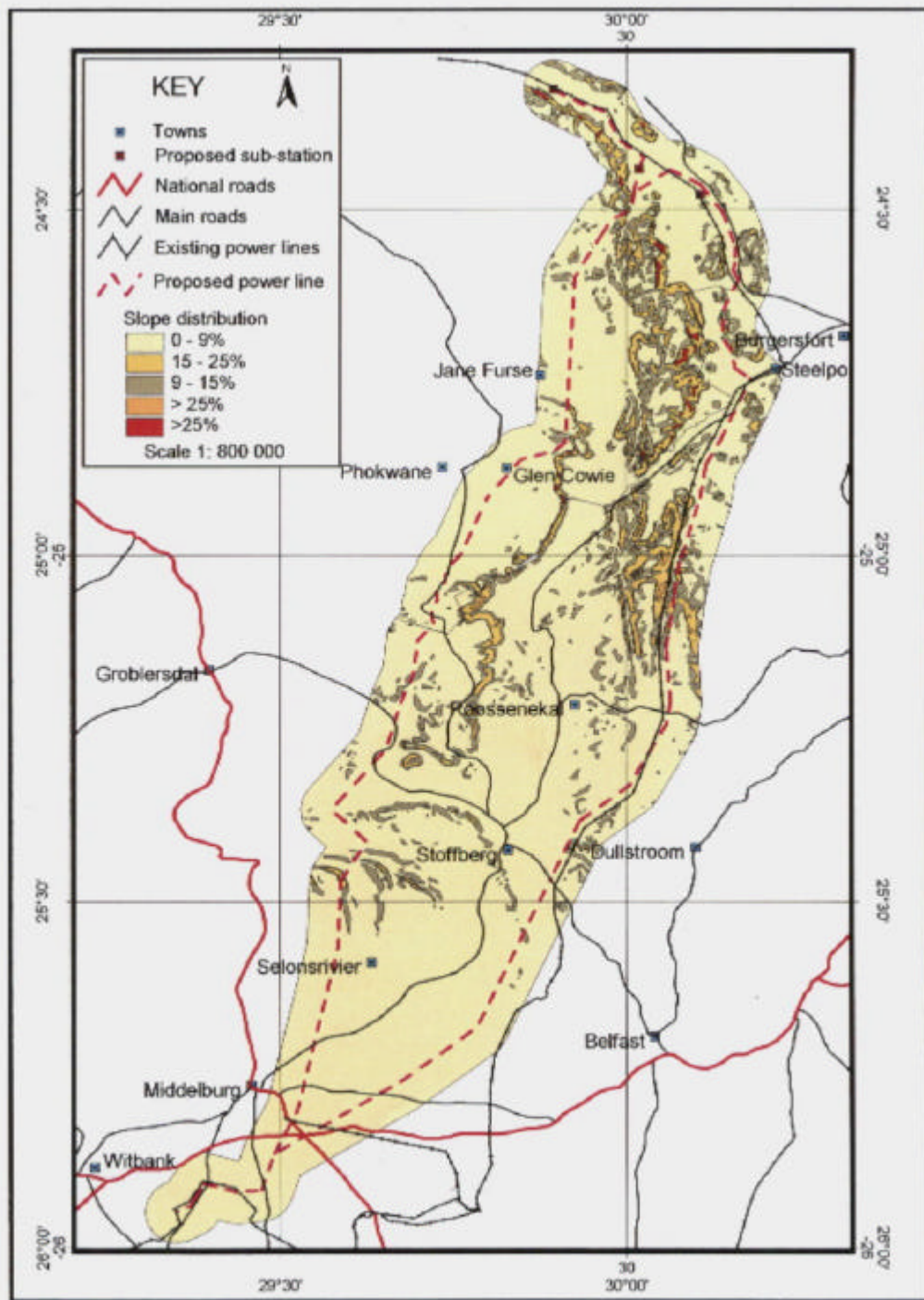
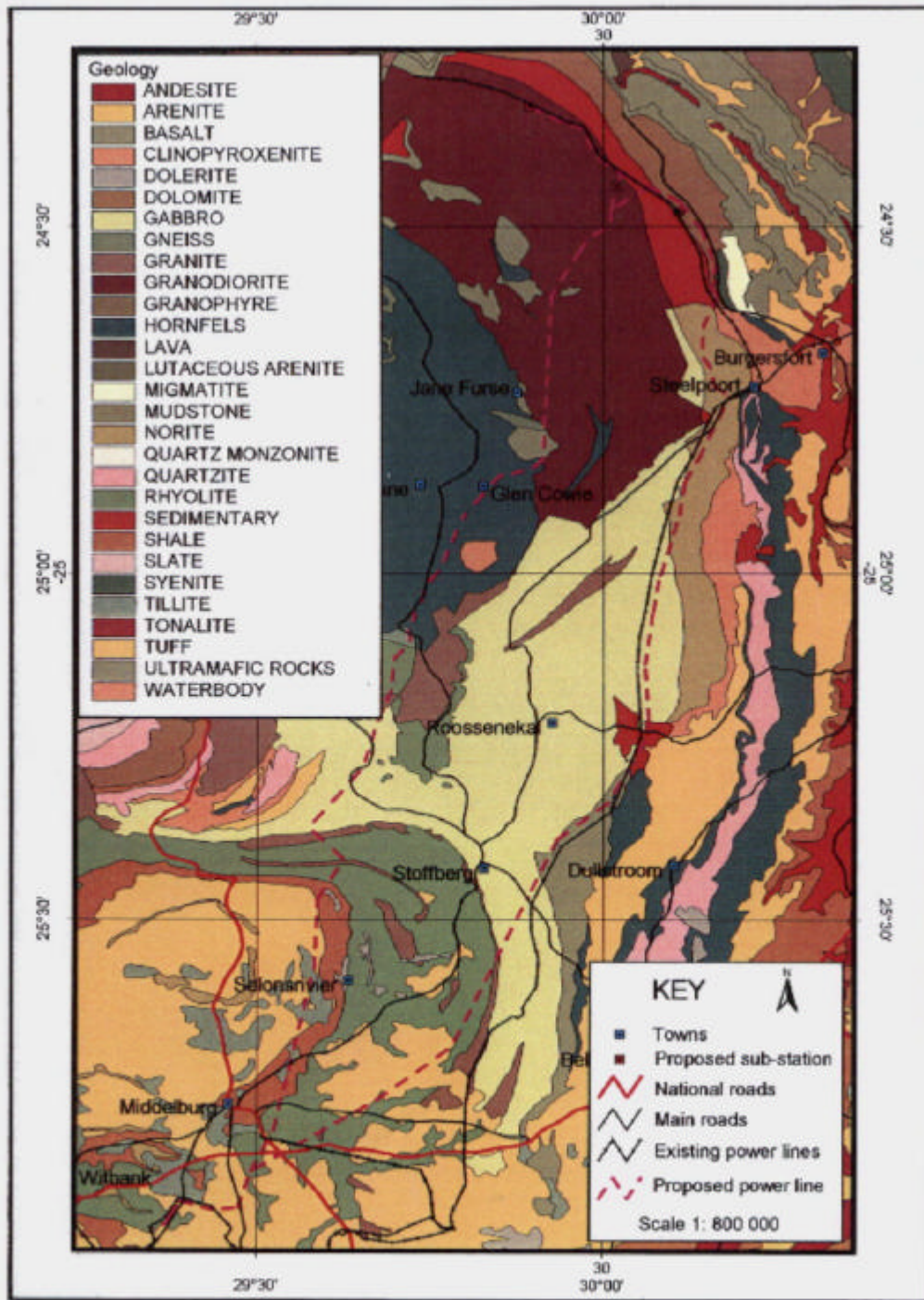


Figure 3. Slope distribution of the study area





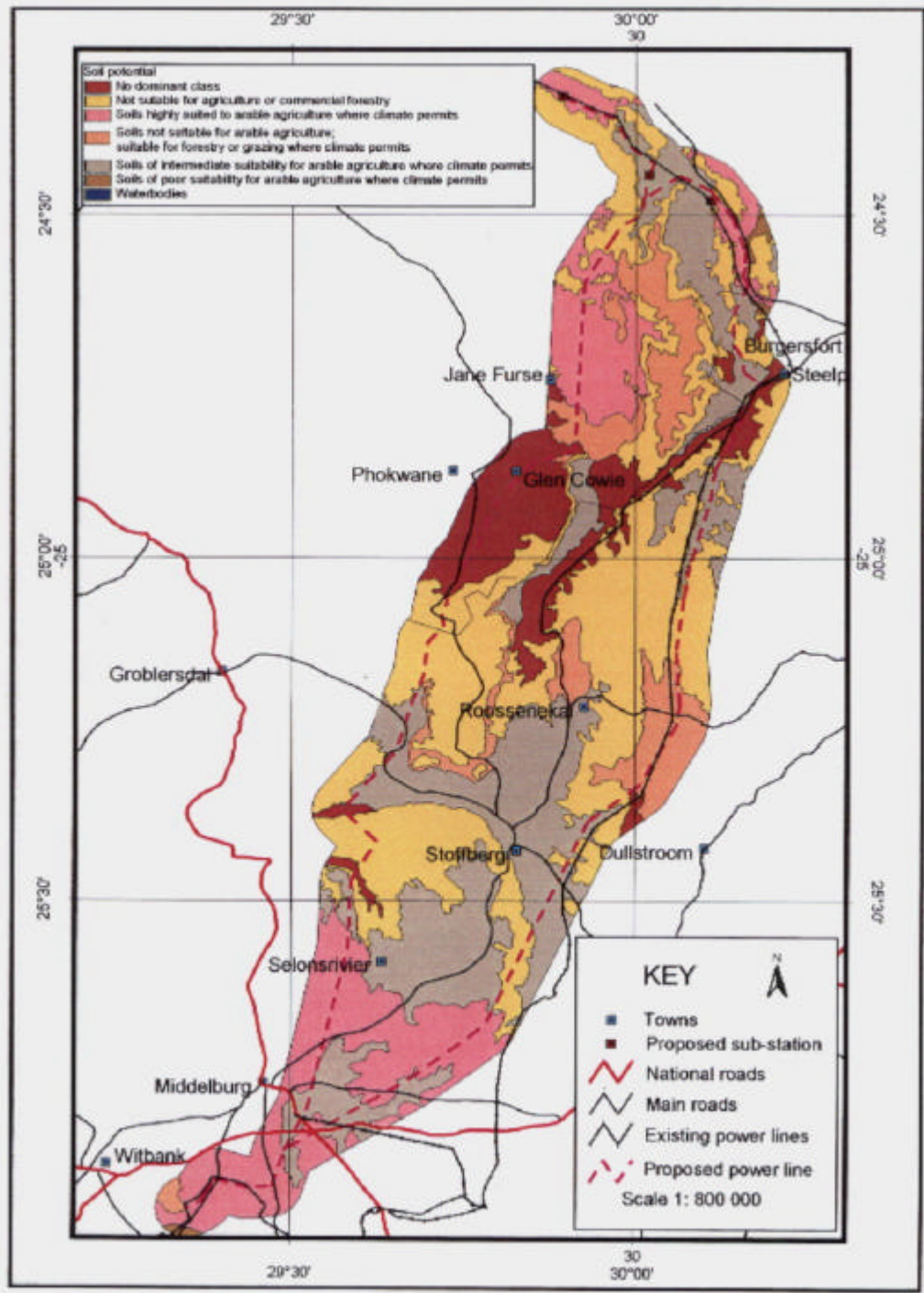


Figure 5. Soil potential of the study area

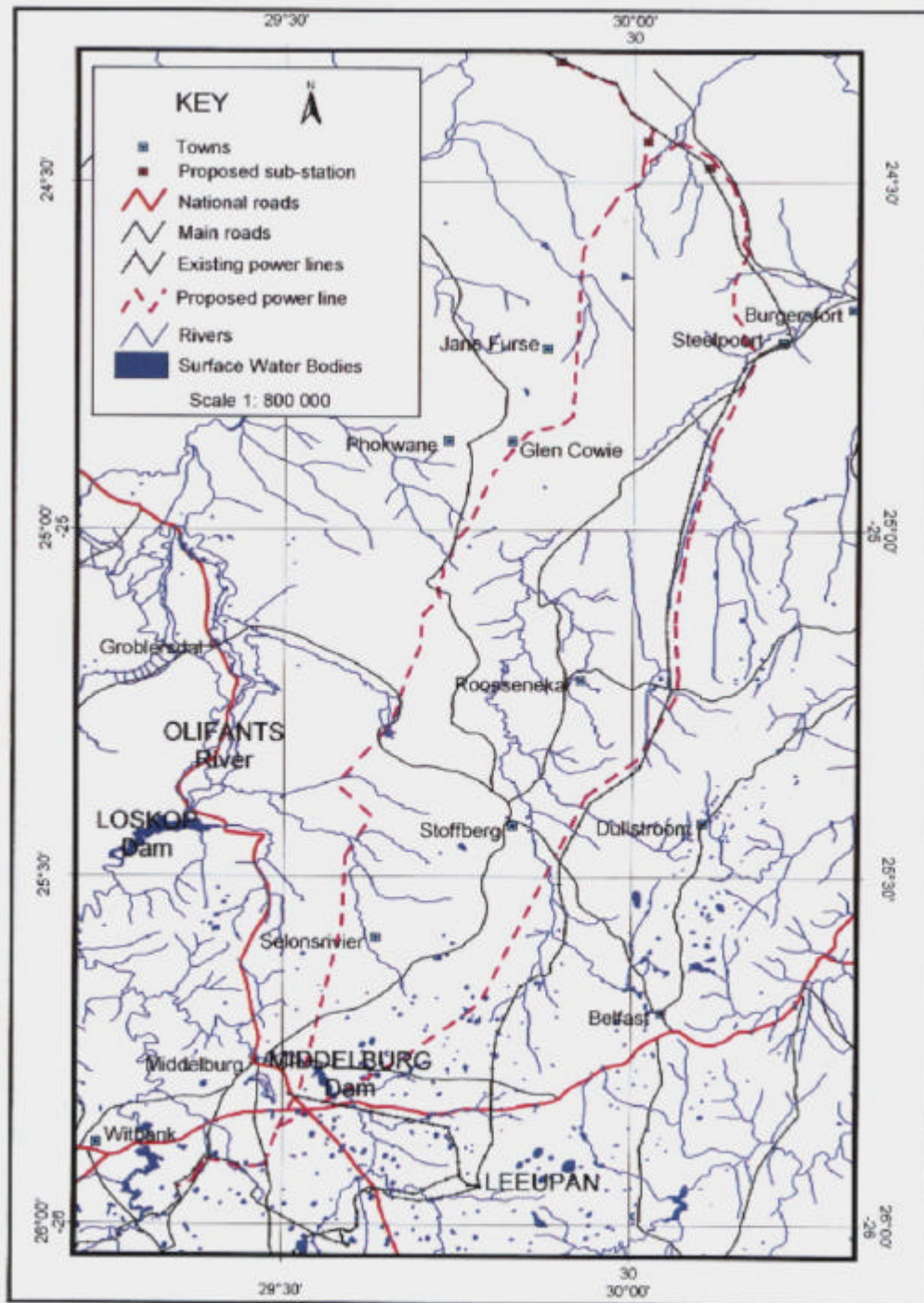


Figure 6. Surface hydrology of the study area

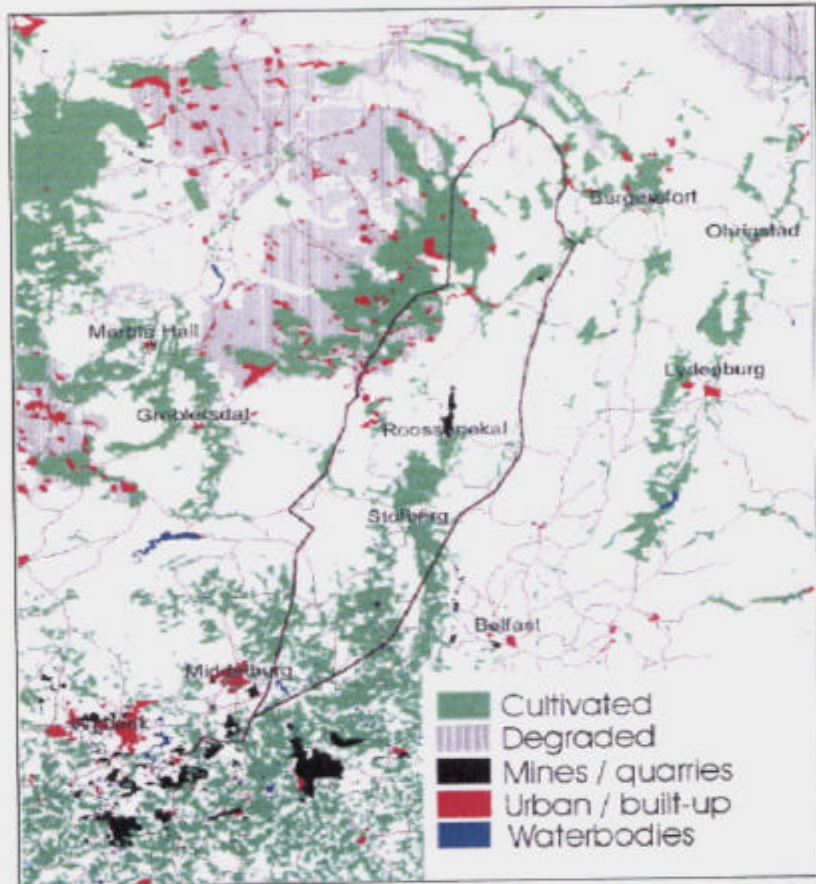


Figure 7. Landcover and Land-Use in the study area.



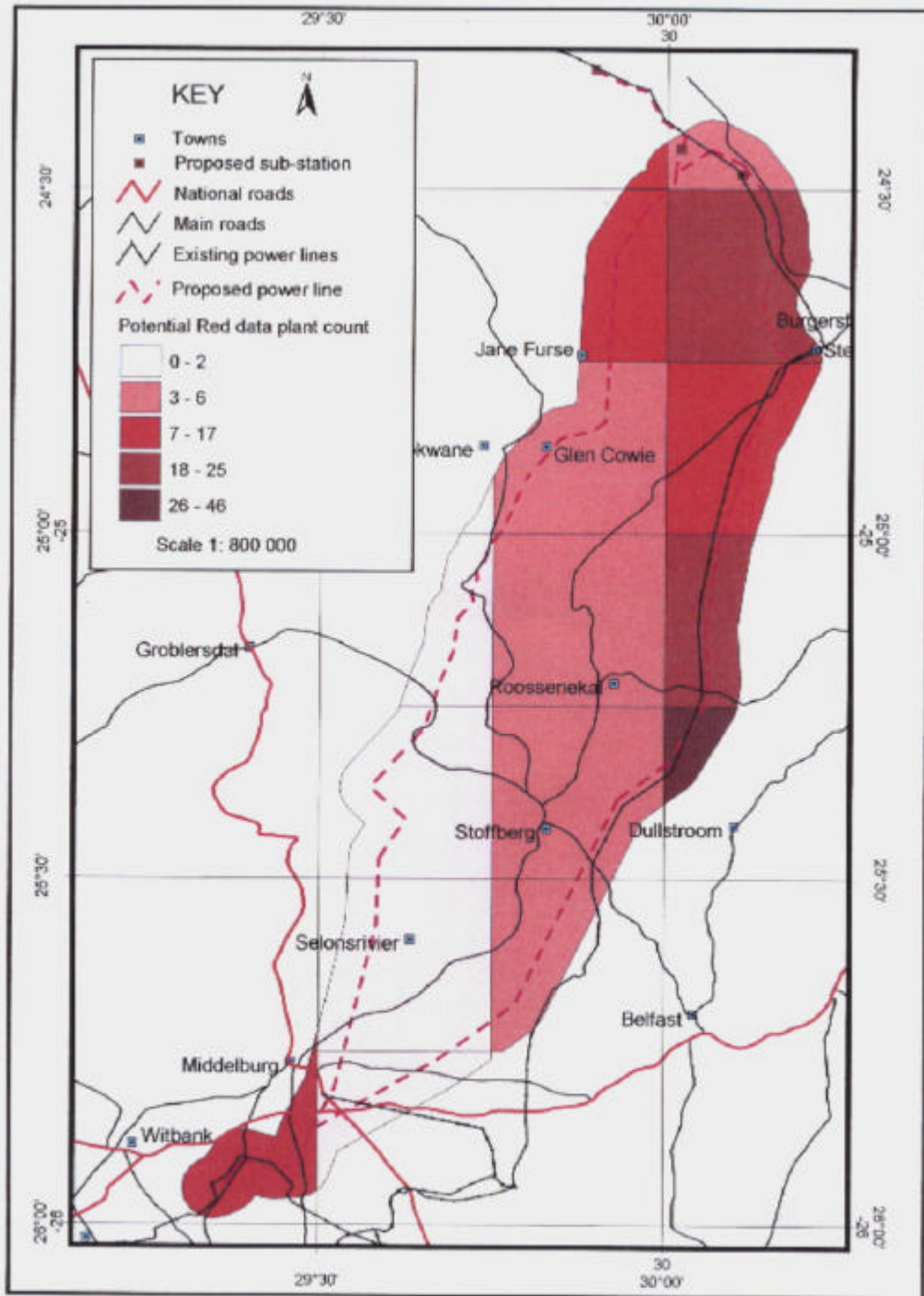


Figure 8. Potential Red Data plant count



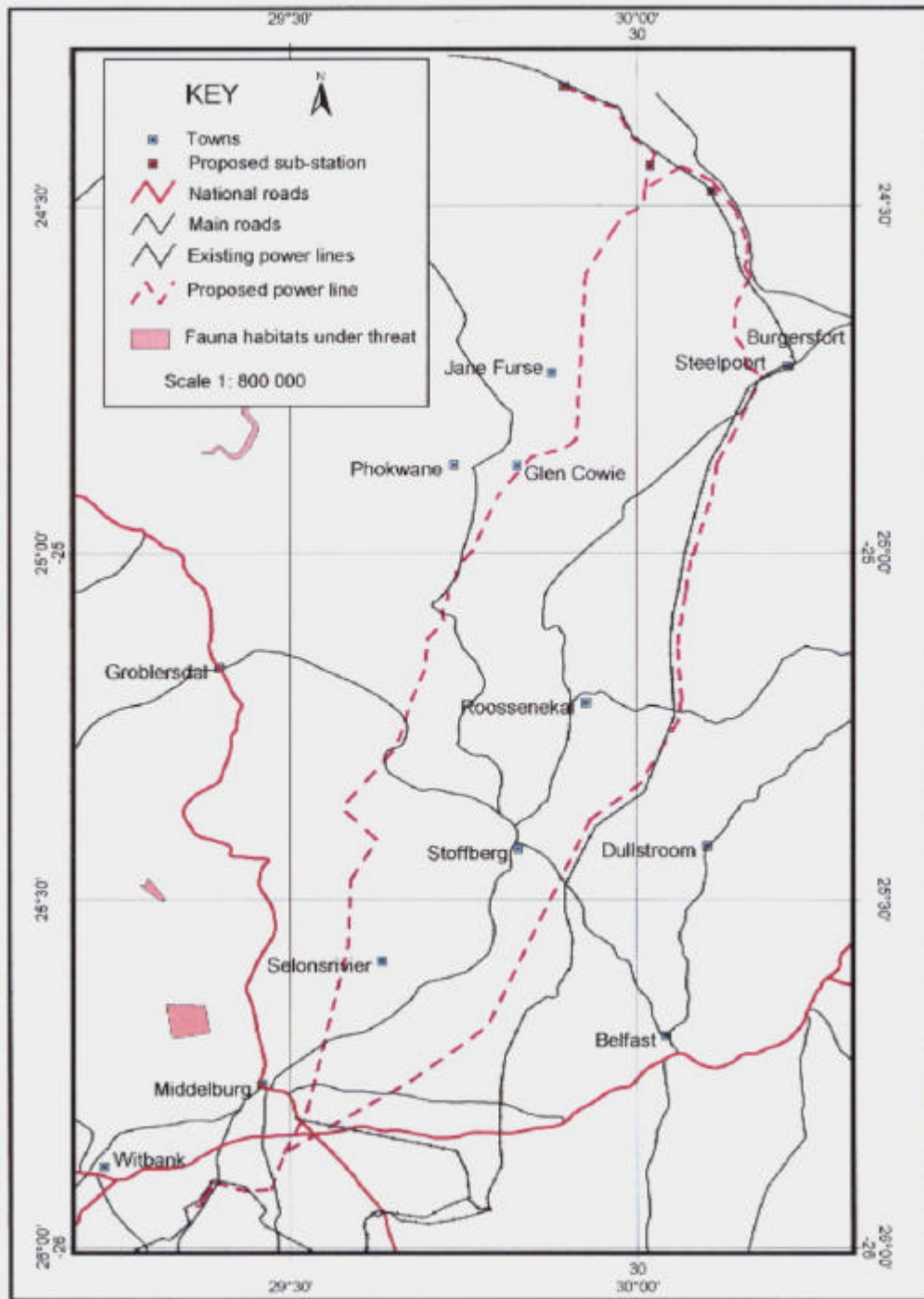


Figure 9. Potential Red Data faunal count

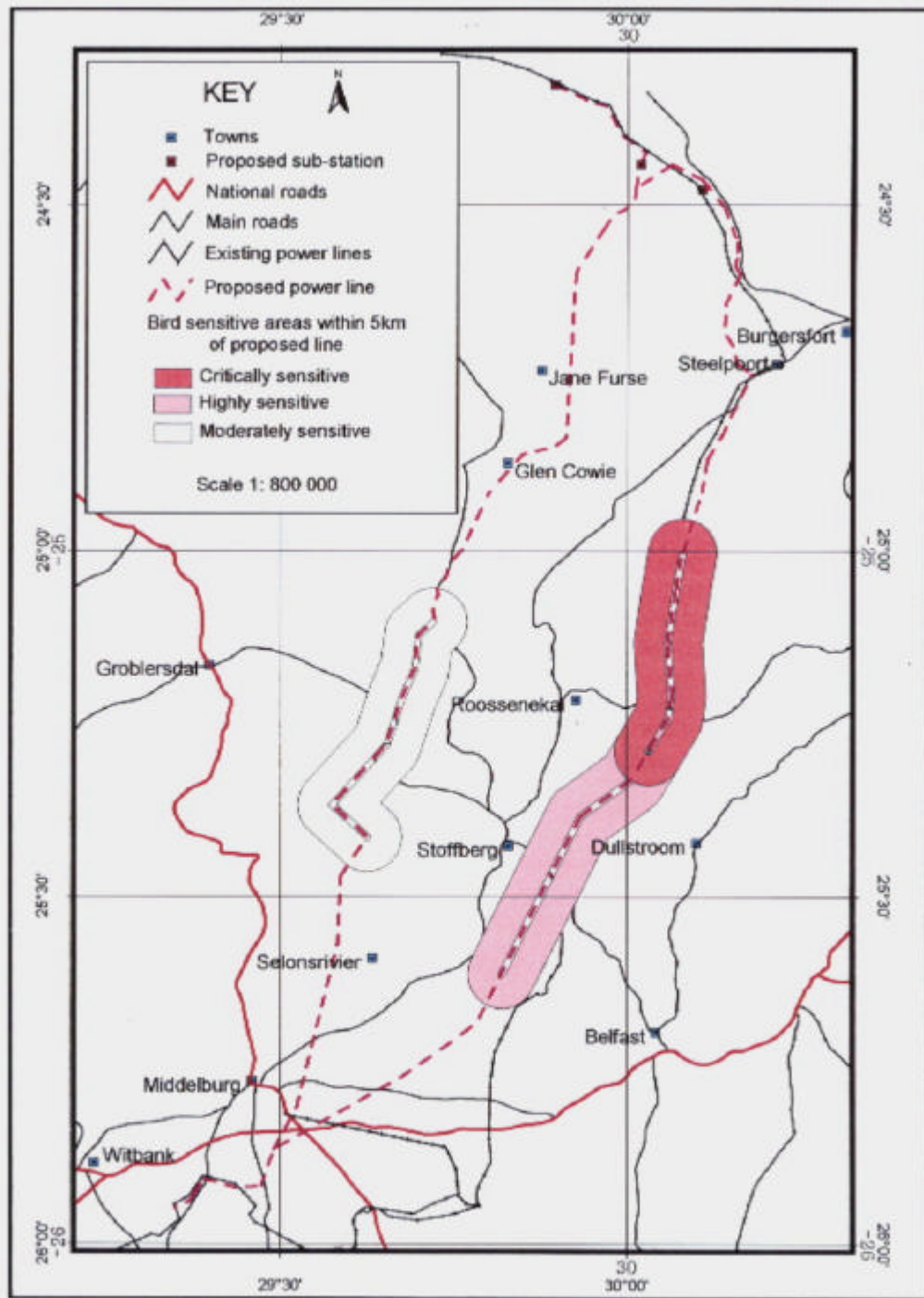


Figure 10. Bird sensitive areas along the two proposed routes

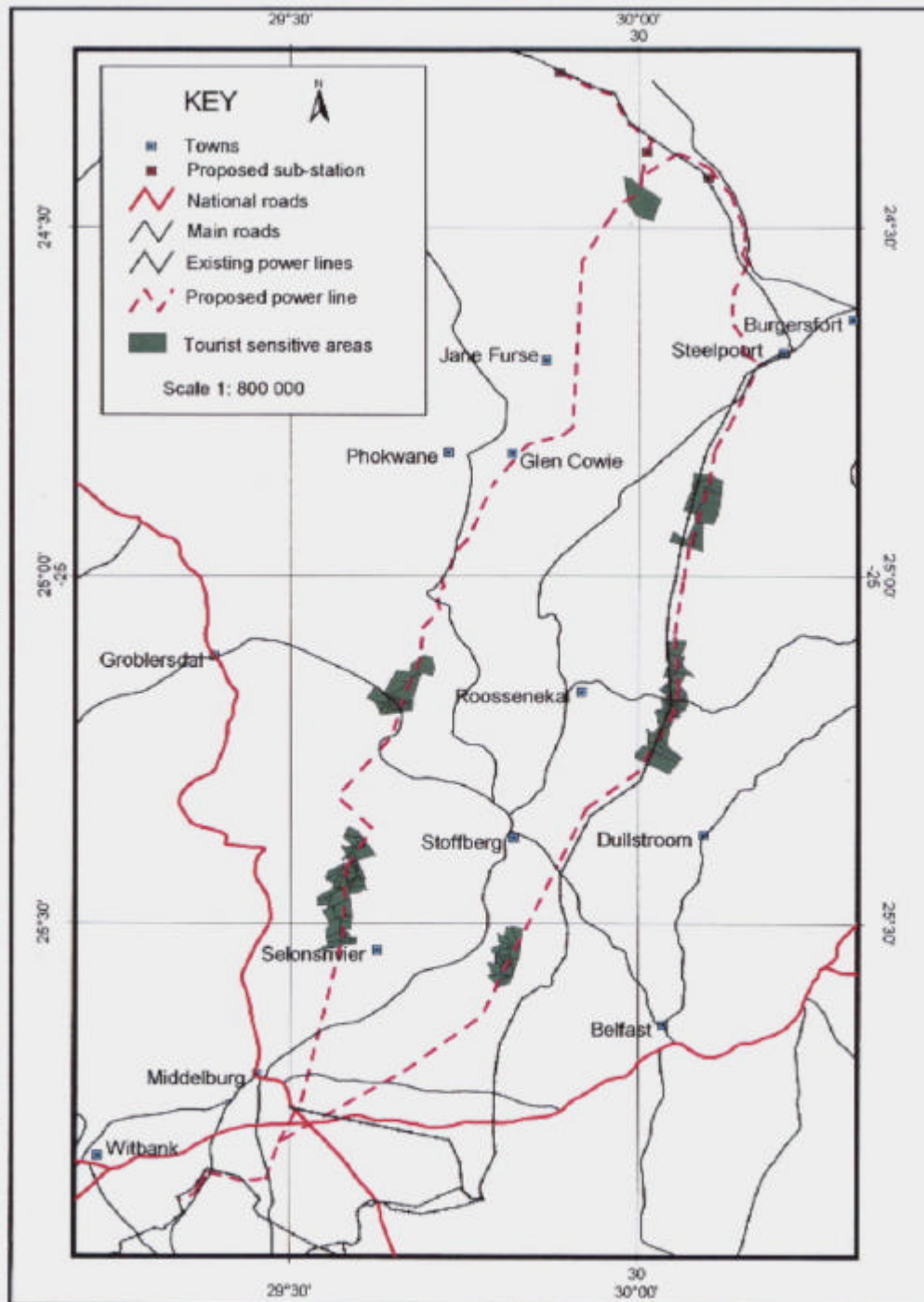


Figure 11. Tourist areas along the two proposed routes



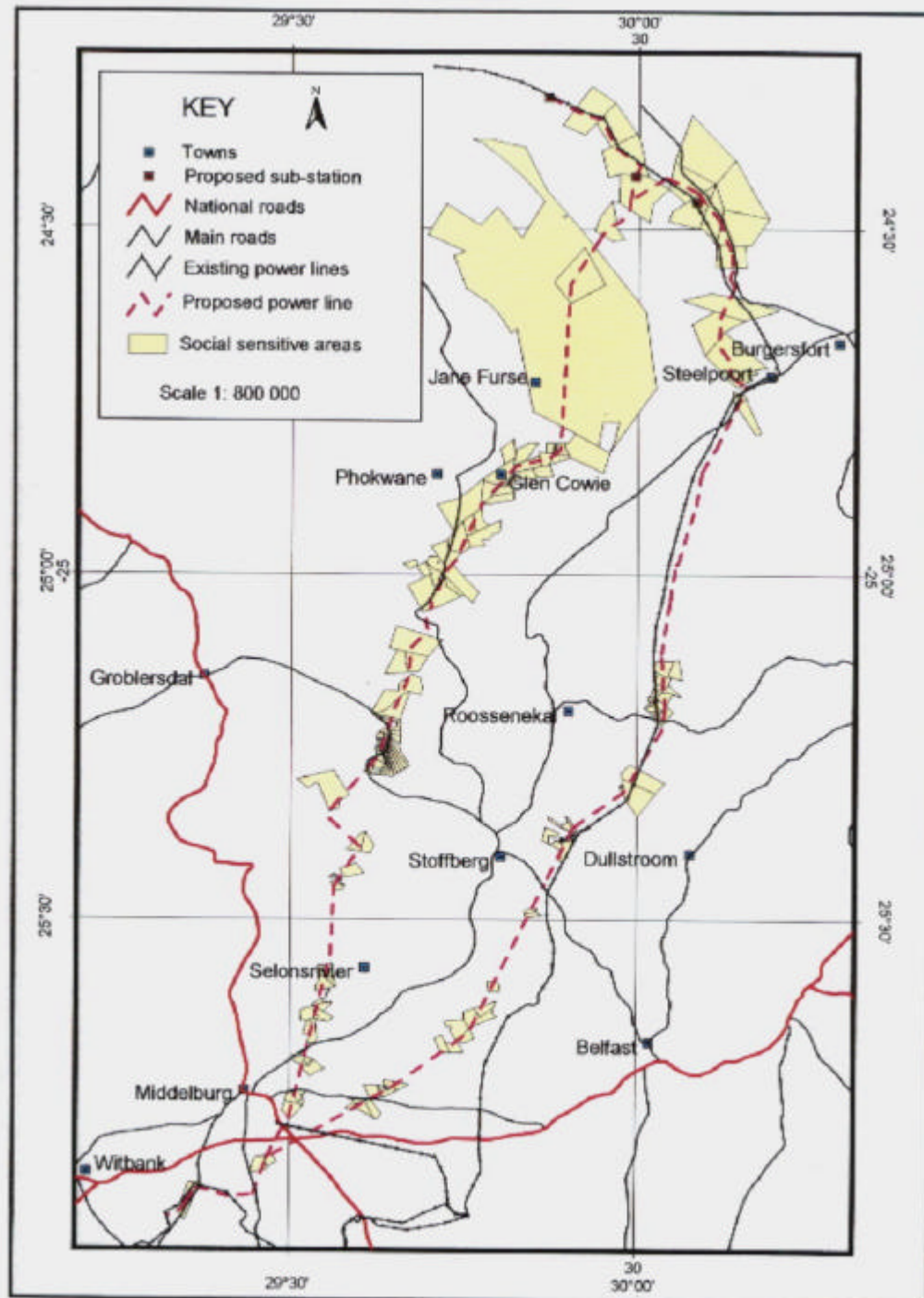


Figure 12. Sites that are socially sensitive

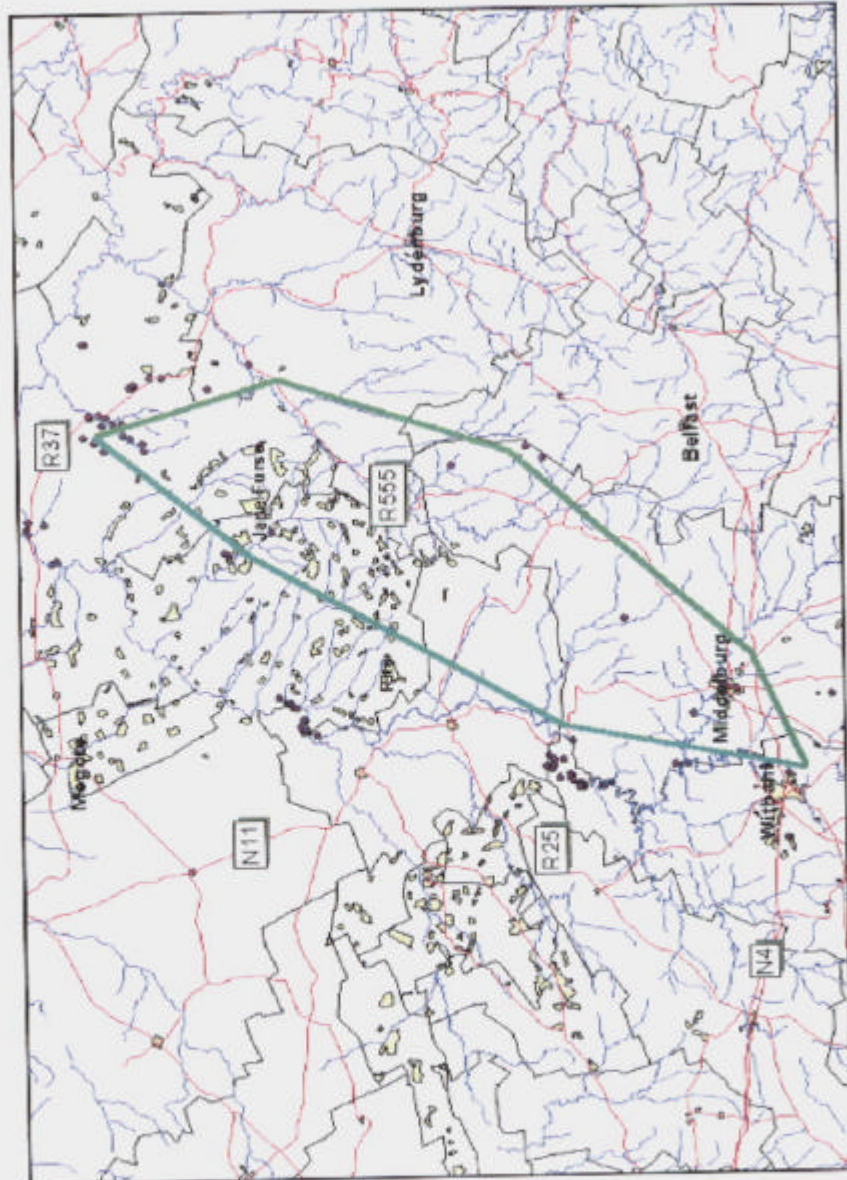


Figure 13. Known sites of cultural significance are indicated as purple dots.

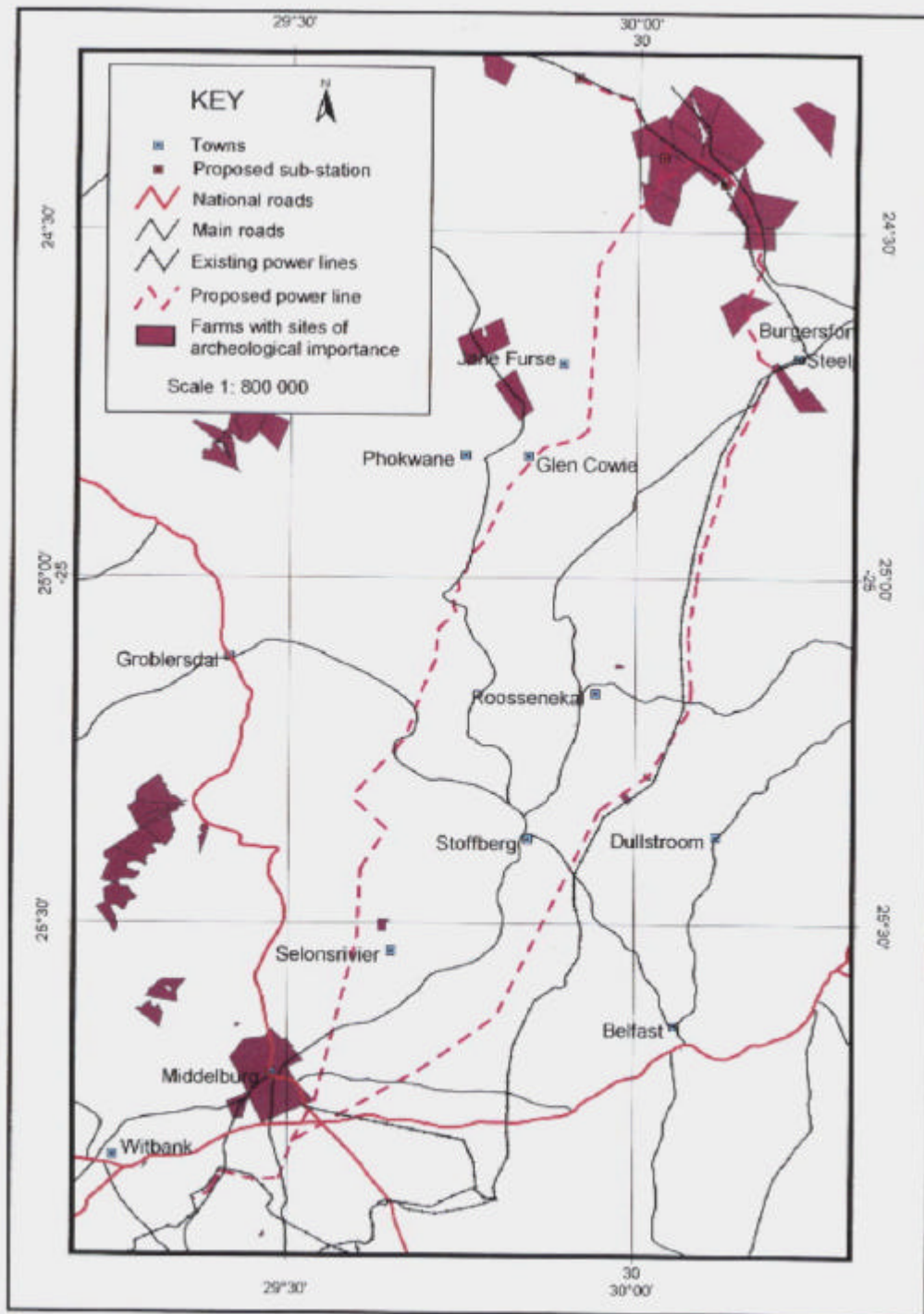


Figure 14. Sites of archaeological significance



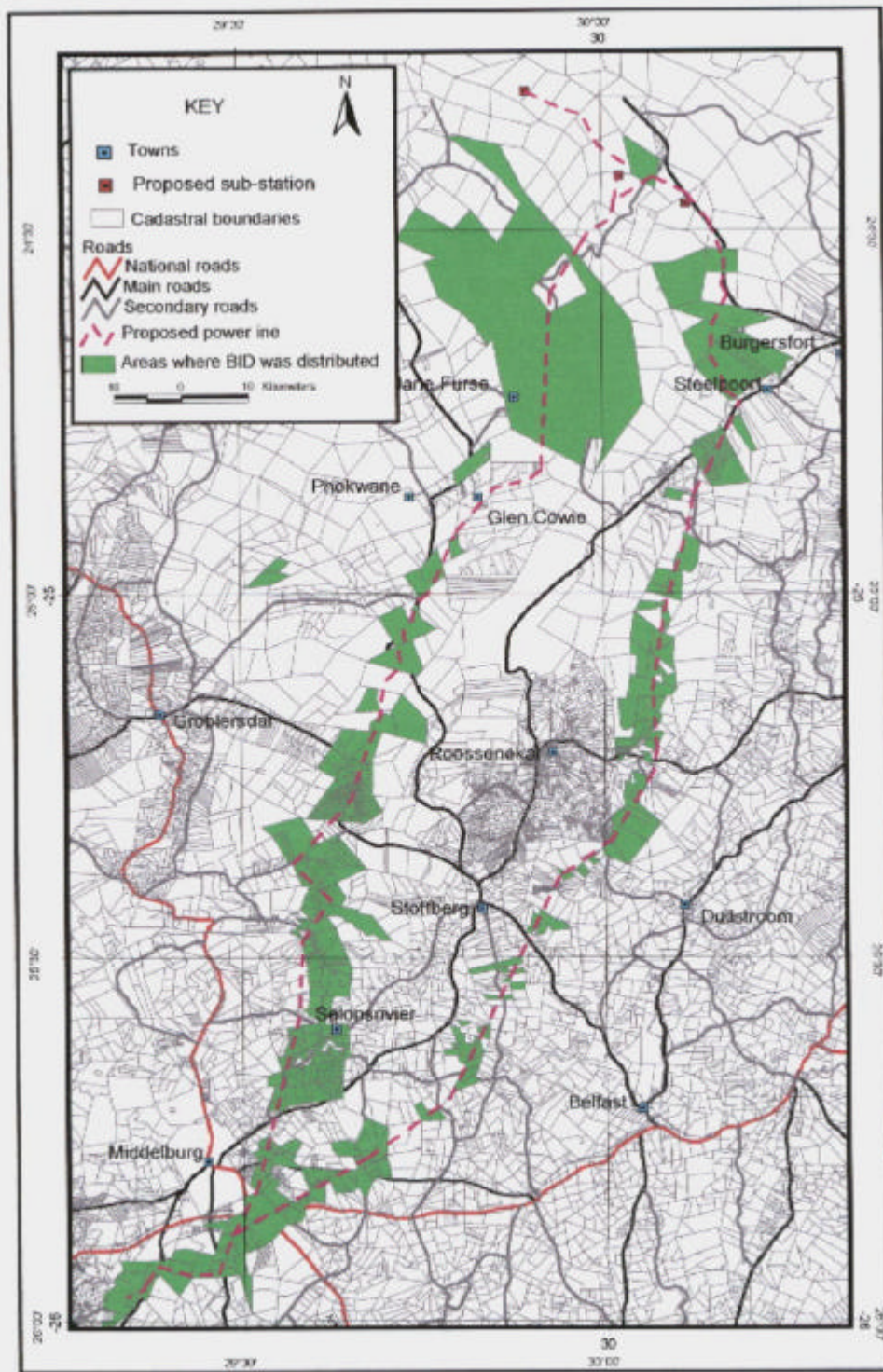


FIGURE 15. Location of BID distribution

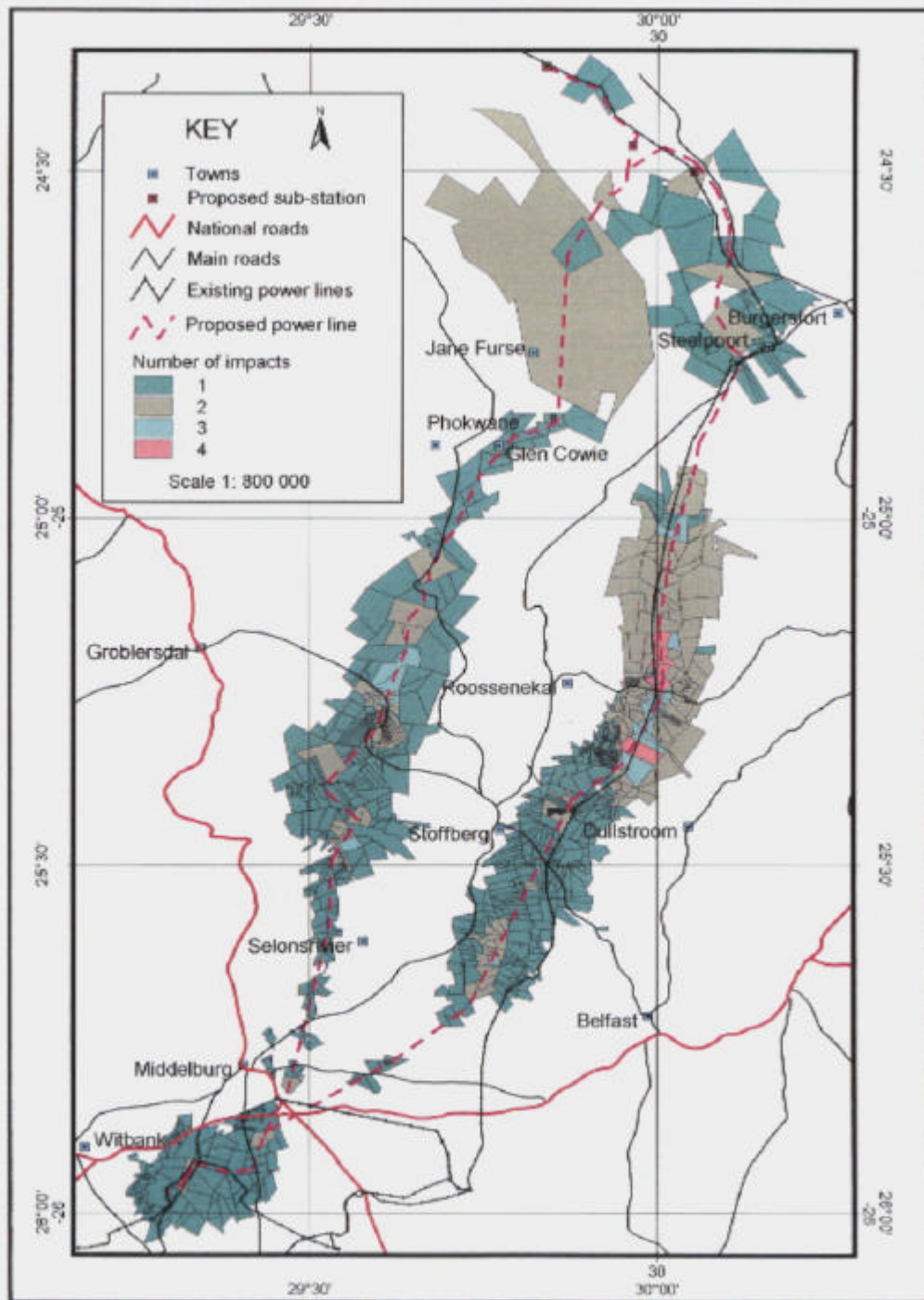


Figure 16. Combined impacts

(Bird sensitive areas, sites of archaeological significance, sites that are socially sensitive, potential red data plant count and tourist area)