

Plate 1. Landsat TM NDVI for 1:50 000 Topo Series Sheet 3325DA, showing the existing and proposed transmission lines and field sampling sites. Dark green=high NDVI, yellow=low NDVI.

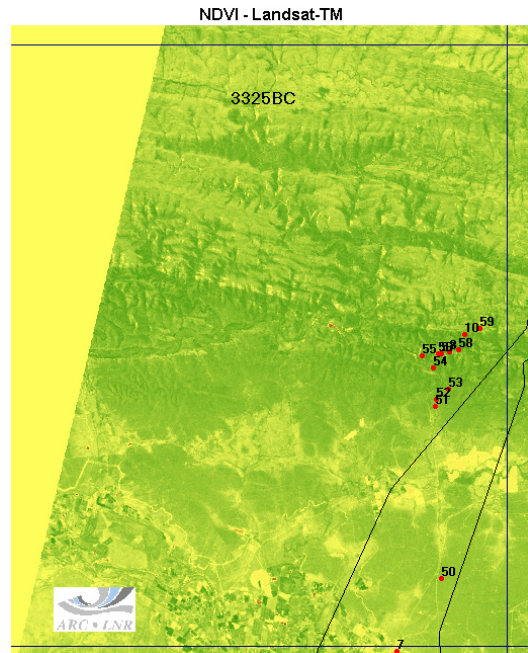


Plate 3. Landsat TM NDVI for 1:50 000 Topo Series Sheet 3325BC, showing the existing and proposed transmission lines and field sampling sites. Dark green=high NDVI, yellow=low NDVI.

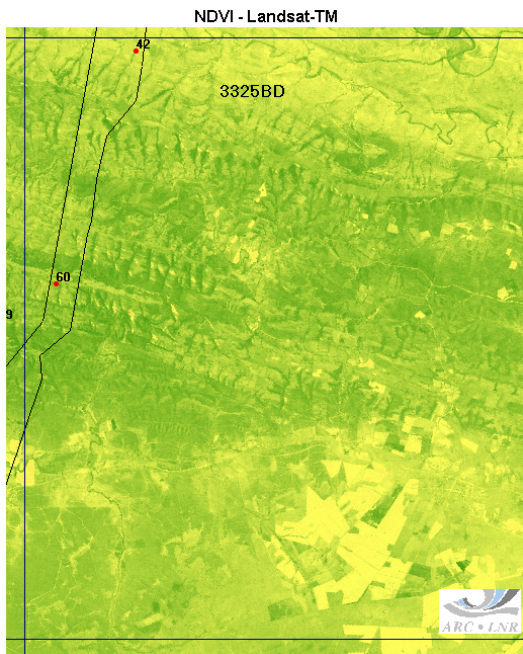


Plate 2. Landsat TM NDVI for 1:50 000 Topo Series Sheet 3325BD, showing the existing and proposed transmission lines and field sampling sites. Dark green=high NDVI, yellow=low NDVI.

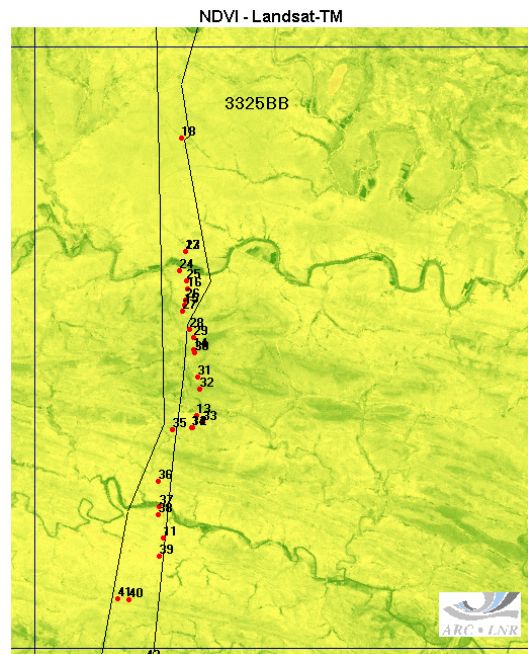


Plate 4. Landsat TM NDVI for 1:50 000 Topo Series Sheet 3325BB, showing the existing and proposed transmission lines and field sampling sites. Dark green=high NDVI, yellow=low NDVI.