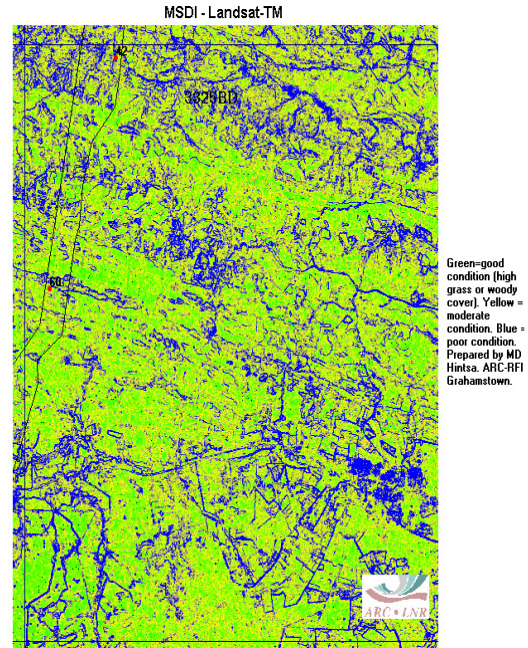
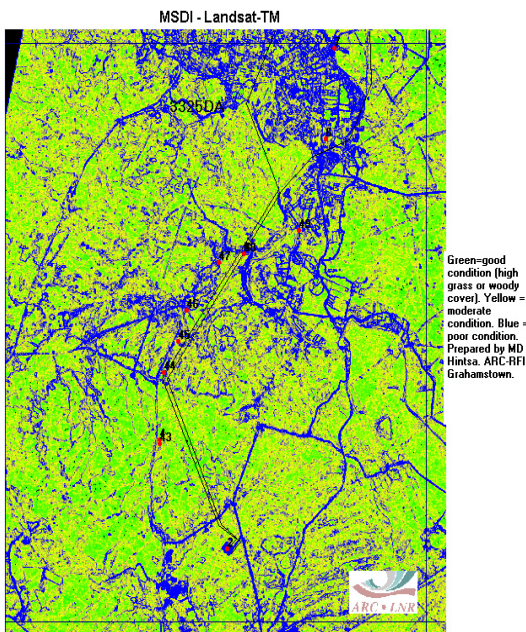


Plate 5. Landsat TM NDVI for 1:50 000 Topo Series Sheet 3225DD, showing the existing and proposed transmission lines and field sampling sites. Dark green=high NDVI, yellow=low NDVI.



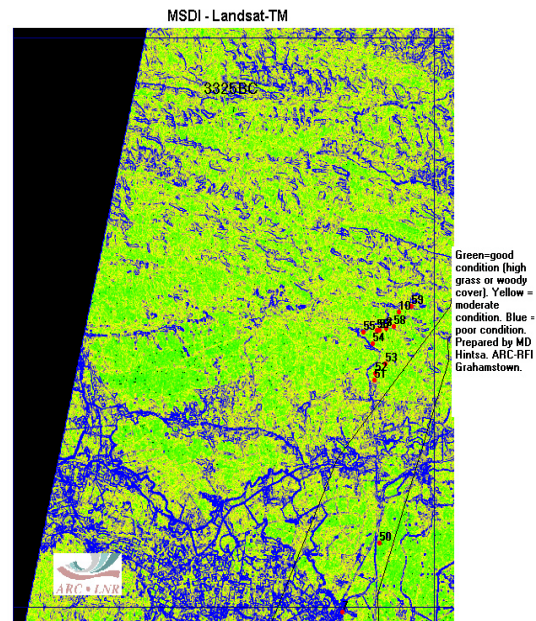
Green=good condition (high grass or woody cover). Yellow = moderate condition. Blue = poor condition. Prepared by MD Hintsa. ARC-RFI Grahamstown.

Plate 7. Landsat TM MSDI for 1:50 000 Topo Series Sheet 3325BD, showing the existing and proposed transmission lines and field sampling sites.



Green=good condition (high grass or woody cover). Yellow = moderate condition. Blue = poor condition. Prepared by MD Hintsa. ARC-RFI Grahamstown.

Plate 6. Landsat TM MSDI for 1:50 000 Topo Series Sheet 3325DA, showing the existing and proposed transmission lines and field sampling sites.



Green=good condition (high grass or woody cover). Yellow = moderate condition. Blue = poor condition. Prepared by MD Hintsa. ARC-RFI Grahamstown.

Plate 8. Landsat TM MSDI for 1:50 000 Topo Series Sheet 3325BC, showing the existing and proposed transmission lines and field sampling sites.