



Zitholele Consulting (Pty) Ltd

Reg. No. 2000/000392/07
PO Box 6002, Halfway House, 1685
South Africa
Thandanani Park, Matuka Close
Halfway Gardens, Midrand
Tel 011-207-2060
Fax 086-676-9950
Email: patiswam@zitholele.co.za

22 November 2012

Dear Stakeholder

Integrated Environmental Authorisation and Water Use License Application for the proposed ash disposal at Kendal Power Station.

An Integrated Environmental Authorisation (Environmental Impact Assessment [EIA] and Waste License Application [WMLA]) and Water Use License Application (WULA) are being undertaken for the proposed ash disposal facilities and associated infrastructure at Kendal Power Station. The power station is situated to the South-West of the town of Ogies in Mpumalanga.

The current ash disposal facilities at Kendal Power Station are running out of space due to the high ash volumes being produced, in addition the life span of Kendal has also been extended to 2053. The proposed ash disposal facilities requires an Environmental Authorisation (EA), Waste Management License (WML) and Water Use License (WUL). The proposed ash disposal projects will be dealt with as separate applications by the Department of Environmental Affairs (DEA), and shall include the following:

1. Extending the current ash disposal facilities at Kendal Power Station including the emergency dump and ash return water dams. (**DEA Reference 14/12/16/3/3/3/63.**)
2. Identify and construct a new facility with a capacity for 30 years to cater for the remaining operational life of the power station until 2053 (**Awaiting reference from DEA.**)

You are invited to register as an Interested and/or Affected Party (I&AP) and to participate in this environmental process by using the registration and comment sheet in the enclosed Background Information Document (BID). Should you require the information in Afrikaans, please notify us and we shall gladly assist. Please return the BID comment sheet at the latest by **04 February 2013** for this initial public notification process, although submissions and public participation will continue throughout the EIA process.

Availability of Draft Scoping Report for public review from 07 December 2012 to 04 February 2013

In accordance with the EIA Regulations, the draft scoping report will be submitted to the competent authority for the environmental impact assessment and the waste management license, namely the national Department of Environment Affairs (DEA). Parallel to this submission, it will be made available for review by the public, relevant organs of state and other government departments for a 40 calendar day period. The public review period will be from **07 December 2012 to 04 February 2013**. Thereafter the report will be updated and resubmitted to the registered interested and affected parties and to the competent authority.

The report will be available for review from **07 December 2012** at the following locations:

Contact	Location	Contact
Printed Copies		
Phola Public Library		013 645 0094
Ogies Public Library, 61 Main Street, Ogies		013 643 1150
Delmas Public Library		013 665 2425
Emalaheni Public Library – 19 OR Thambo Street		013 653 3116
Kungwini Public Library		013 932 6305
Kendal power station – Security Reception		013 647 6002
Electronic Copies		
Lorraine Ndala	www.eskom.co.za/eia	011 800 4622
Patiswa Mnqokoyi	http://www.zitholele.co.za/ea-and-wml-for-the-on-going-ash-disposal-at-kendal-power-station	011 207 2074
Patiswa Mnqokoyi	CD on request via email from Zitholele Consulting.	Phone 011 207 2074 or send email request to patiswam@zitholele.co.za

You are requested to comment on the DSR in any of the following ways:

- Completing the comment sheet enclosed;
- Writing a letter, or producing additional written submissions;
- Sending an email or phoning the public participation office; or
- Attending the public meeting (see below for details).

Invitation to a public meeting on 29 January 2013 at 14:00 or at 18:00

Two similar public meetings will be held – one in the afternoon and one in the evening. You are welcome to choose which one would be most convenient for you to attend.

Date: 29 January 2012 at 14:00 **or** at 18:00. Please note the project team will be available from 11:00 at El Toro should you wish to meet with them to discuss any concerns.

Venue: El Toro Conference Centre
El Toro is situated next to the Kendal/Balmoral (R545) road, approximately 2 km south of the N12, as you drive from the N12 in a southerly direction towards the Kendal Power Station.

Registration: commences 30 minutes before the time indicated above.

The purpose of the public meeting will be to present the outcome of the scoping process, and to allow discussions around those outcomes and to make recommendations which will be taken into the EIA phase.

Kindly send your replies to Patiswa Mnqokoyi at the Public Participation Office on fax number 086-676-9950 or e-mail to patiswam@zitholele.co.za. You are also welcome to contact Zitholele Consulting on (011) 207-2074 or (011) 207- 2071. This assessment is being conducted on behalf of Eskom.

Yours sincerely



Gernie Agenbag
Public Participation Office

Environmental Impact Assessment, Water - and Waste Management License Application for ash disposal facilities at Kendal Power Station.

(DEA Ref No 14/12/16/3/3/3/63) (NEAS Reference: DEA/EIA/00001508/2012)

Reply sheet to receive the Draft Scoping Report and to attend a public meeting on 29 January 2013

EIA Public Participation Office

Patiswa Mnqokoyi
 Zitholele Consulting (Pty) Ltd
 P O Box 6002, Halfway House, 1685
 Tel: (011) 207 2076/2075/2077
 Fax: 086-676-9950
 Email: patiswam@zitholele.co.za

Please complete by 14 January 2013 and return to the EIA Public Participation Office (as above)

TITLE		FIRST NAME	
INITIALS		SURNAME	
ORGANISATION		EMAIL	
POSTAL ADDRESS			
		POSTAL CODE	
TEL NO		FAX NO	

REGISTRATION TO RECEIVE THE DRAFT SCOPING REPORT AND/OR TO ATTEND THE PUBLIC MEETING

DRAFT SCOPING REPORT		
I would like to receive a copy of the Draft Scoping Report (please circle the appropriate block)		
Per email	YES	NO
CD by mail	YES	NO
PUBLIC MEETING		
I would like to attend the public meeting (please circle the appropriate block)		
I will attend the Public Meeting (14:00 to 16:00) on 29 January 2013 at EI Toro Conference venue	YES	NO
I will attend the Public Meeting (18:00 to 20:00) on 29 January 2013 at EI Toro Conference venue	YES	NO

COMMENTS (please use separate sheets if you wish)

Any comments you may have at this stage:

.....

.....

Please ask the following of my colleagues/friends to register as I&APs for this project:

.....

.....

.....

THANK YOU FOR YOUR CONTRIBUTION

6 June 2013

Dear Stakeholder

**ENVIRONMENTAL IMPACT ASSESSMENTS AND A WASTE MANAGEMENT LICENSE
APPLICATION FOR THE PROPOSED NEW 30 YEAR ASH DISPOSAL FACILITY AND
ASSOCIATED INFRASTRUCTURE AT KENDAL POWER STATION**

As you may recall, during the last week of November 2012 Zitholele Consulting announced the commencement of the Environmental Impact Assessment (EIA) process and Waste Management License Application for the proposed above-mentioned project through the placement of advertisements, erection of site notices, distribution of notification letters and a background information document and personal telephone calls. This announcement and notification activity was done simultaneously with the announcement and notification of the Integrated Environmental Authorisation and Water Use License Application for the proposed Continuous Ash Disposal Facility at Kendal Power Station (DEA Reference 14/12/16/3/3/3/63).

Your comments and/or concerns raised to date regarding this proposed project thus far is appreciated.

DRAFT SCOPING REPORT FOR REVIEW AND COMMENT

We would like to make use of this opportunity to inform you that the Draft Scoping Report (DSR) will be available for public review from **Thursday, 6 June 2013 to Tuesday, 18 July 2013**. Thereafter, the report will be updated with comments received and submitted to the Department of Environmental Affairs (DEA). The DEA will, in consultation with the environmental authorities of Mpumalanga, consider the scope covered by the specialist studies and either accept the Scoping Report and approve the Plan of Study for EIA, or request amendments to the DSR.

In accordance with the EIA Regulations, the purpose of a DSR is to outline the scope of the project and to identify areas where additional studies are required in order to make an informed decision. Interested and affected parties (I&APs) also have an opportunity to verify that their contributions to date have been captured and correctly understood by the project team. All issues raised by the I&APs, along with issues identified by the environmental technical specialists, have been used to define the terms of reference for the Specialist Studies that will be conducted during the Impact Assessment Phase of the EIA.

The DSR will be available at the public places listed in the table below. The report is also available for download from the Eskom (www.eskom.co.za/eia) and Zitholele websites (www.zitholele.co.za).

Contact Person	Location	Contact Details
Printed Copies		
Agnes Mabena	Phola Public Library, Qwabe Street, Phola Location	Tel: 013 645 0094
Clement Tiva	Ogies Public Library, 61 Main Street, Ogies	Tel: 013 643 1150 or 643 1027
Ms Grace Kotlolo	Kungwini Public Library, Bronkhorstspuit, Cnr Mark and Botha Streets	Tel: 013 932 6305
Mrs Lydia Mehlaphe	Delmas Public Library, Cnr Cillers & Van Riebeck Street, Delmas	Tel: (013) 665 2425
Joannete Rozmiarek	Emalahleni Public Library 28 Hofmeyer Street, Emalahleni	(013) 690 6231 082 787 8540

Contact Person	Location	Contact Details
Kendal Power Station	Security Reception, Kendal	(013) 647 6002

You can comment on the Draft Scoping Report in any of the following ways:

- By completing the comment sheet that is available with the DSR;
- By writing a letter, or producing additional written submissions;
- By email or telephone to the public participation office; or
- By attending the public meeting (see below).

Comments on the DSR must be submitted by **Thursday, 18 July 2012**.

The purpose of the **public meeting** will be to ensure that I&APs understand the project scope, the proposed specialist studies, and to provide an opportunity for I&APs to comment on the DSR. It is important that you register for the public meeting in advance - please use the enclosed form and return it by **Friday, 14 June 2013** should you wish to attend. This will allow us to make the necessary arrangements for the meetings. The public meeting will be held as follows:

DATE	TIME	VENUE AND ADDRESS
Thursday, 20 June 2013	Registration starts at: 15h30 Meeting starts at: 16:00	Phola Community Centre, Phola Location

Kindly send your reply to Patiswa Mnqokoyi at the Public Participation Office on fax number 086-676-9950 or e-mail to patiswam@zitholele.co.za. You are also welcome to contact Zitholele Consulting on (011) 207-2060.

Yours sincerely



Nicolene Venter
ZITHOLELE CONSULTING (PTY) LTD
Senior Public Participation Practitioner

Environmental Impact Assessment and Waste Management License Application for new 30 Year ash disposal facility at Kendal Power Station

(DEA Ref No 14/12/16/3/3/3/68)

(NEAS Reference: DEA/EIA/00001624/2013)

COMMENT SHEET ON THE DRAFT SCOPING REPORT

Available for public review from 6 June 2013 to 16 July 2013

EIA Public Participation Office

Patiswa Mnqokoyi
Zitholele Consulting (Pty) Ltd
P O Box 6002, Halfway House, 1685
Tel: (011) 207 2074
Fax: 086-676-9950
Email: patiswam@zitholele.co.za

Please complete by 16 July 2013 and return to the EIA Public Participation Office (as above)

TITLE		FIRST NAME		
INITIALS		SURNAME		
ORGANISATION <small>(Please do not use any acronyms)</small>				
ADDRESS				POSTAL CODE
TEL NO		FAX NO		
CELL		EMAIL		
SIGNATURE			Farm name and portion number if you are a directly affected landowner	
DATE				

COMMENTS (Please use separate sheets if necessary)

1. Have your questions, concerns, issues and suggestions been captured? If not, please indicate below.

.....

2. Of the issues already covered, do you wish to add additional aspects that have not yet been mentioned?

.....

3. Please tell us, did you find the Draft Scoping Report useful? Please indicate below.

YES, USEFUL	
NEED IMPROVEMENT	
NO, NOT USEFUL	

Please tell us why:

.....

4. Any other comments you may have:

.....

THANK YOU FOR YOUR CONTRIBUTION

**Environmental Impact Assessment and
Waste Management License Application for
new 30 year ash disposal facility at Kendal
Power Station**

(DEA Ref No 14/12/16/3/3/3/68) (NEAS Reference:
DEA/EIA/00001624/2013)

EIA Public Participation Office

Patiswa Mnqokoyi
Zitholele Consulting (Pty) Ltd
P O Box 6002, Halfway House, 1685
Tel: (011) 207 2074
Fax: 086-676-9950
Email: patiswam@zitholele.co.za

**Reply sheet to receive the Draft Scoping Report and
to attend a public meeting on 20 June 2013**

Please complete by 14 June 2013 and return to the EIA Public Participation Office (as above)

TITLE		FIRST NAME	
INITIALS		SURNAME	
ORGANISATION		EMAIL	
POSTAL ADDRESS			
		POSTAL CODE	
TEL NO		FAX NO	

REGISTRATION TO RECEIVE THE DRAFT SCOPING REPORT AND/OR TO ATTEND THE PUBLIC MEETING

DRAFT SCOPING REPORT

I would like to receive a copy of the Draft Scoping Report (please circle the appropriate block)

Per email	YES	NO
CD by mail	YES	NO

PUBLIC MEETING

I would like to attend the public meeting (please circle the appropriate block)

I will attend the Public Meeting (16:00 to 18:00) on Thursday, 20 June 2013 at Phola Community Center	YES	NO
---	------------	-----------

COMMENTS (please use separate sheets if you wish)

Any comments you may have at this stage:

.....

.....

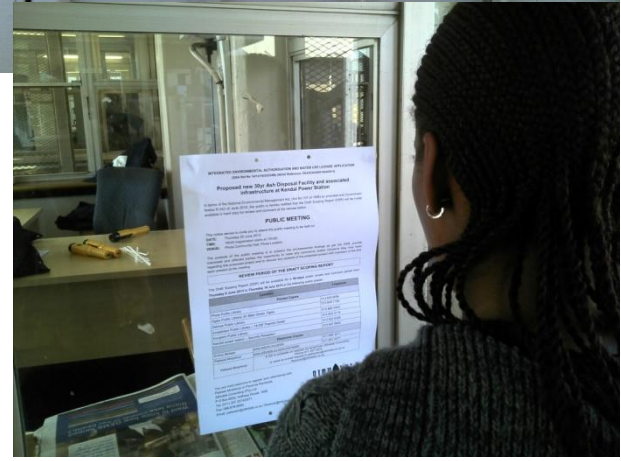
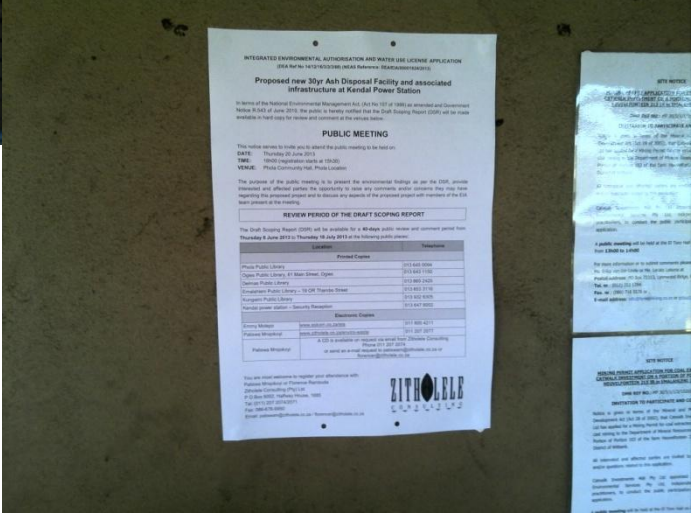
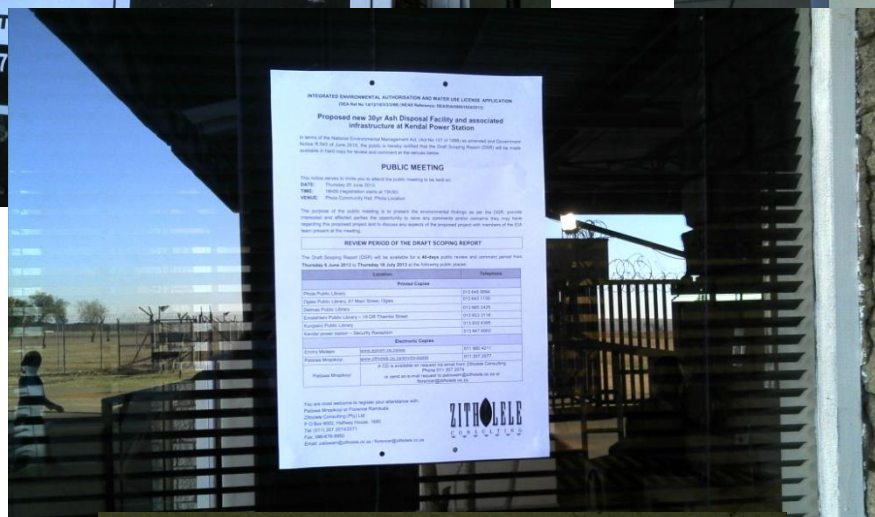
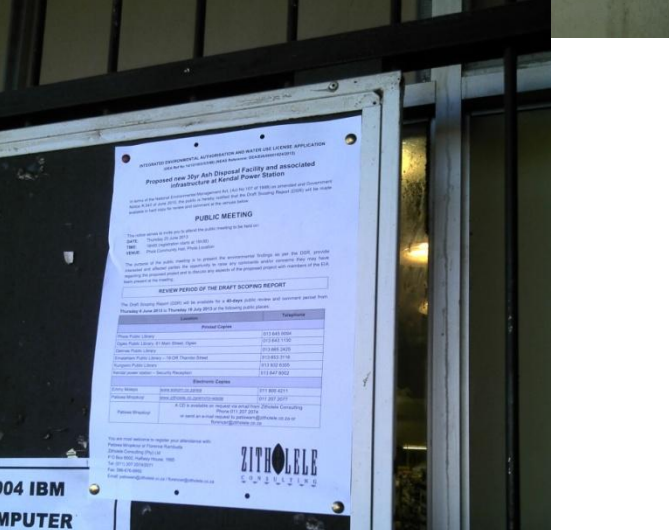
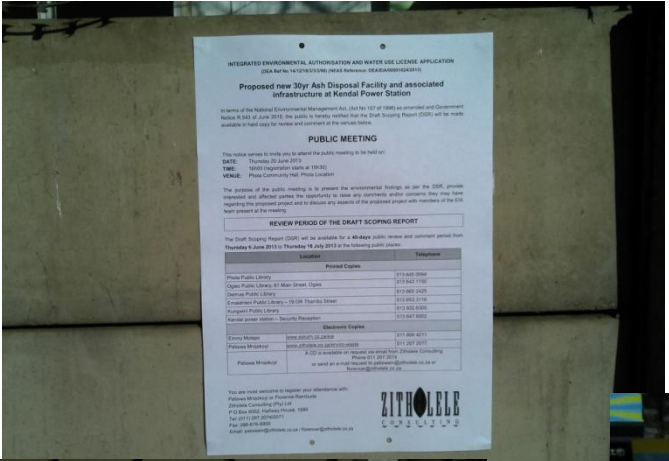
Please ask the following of my colleagues/friends to register as I&APs for this project:

.....

.....

.....

THANK YOU FOR YOUR CONTRIBUTION



INTEGRATED ENVIRONMENTAL IMPACT ASSESSMENT, WASTE MANAGEMENT LICENSE AND WATER USE LICENSE APPLICATION FOR THE PROPOSED NEW 30 YEAR ASH DISPOSAL FACILITY FOR KENDAL POWER STATION

Site visit on 28 June to put up notices for the 2nd public meeting taking place on 4 July 2013

Site notices erected along the R545, vicinity of Kendal Power Station, and in the town of Ogies.



Zitholele Consulting

Reg. No. 2000/000392/07

PO Box 6002 Halfway House 1685, South Africa
Building 1, Maxwell Office Park, Magwa Crescent West
c/o Allandale Road & Maxwell Drive, Waterfall City, Midrand
Tel + (27) 11 207 2060
Fax + (27) 86 674 6121
E-mail : mail@zitholele.co.za



Our Ref : 12935-Let-EIA Newsletter

04 August 2014

Dear Stakeholder

EIA Newsletter: Integrated Environmental Authorisation (Environmental Impact Assessment, Waste Management License and Water Use License Applications) - Proposed New 30 Year Ash Disposal Facility and Associated Infrastructure at Kendal Power Station

Please find attached, for your attention, the following documents:

- EIA Newsletter;
- EIA Newsletter Comment Form; and
- EIA Locality Map.

We are looking forward to receiving your comments.

Yours faithfully

A handwritten signature in black ink, appearing to read 'Nicolene Venter', is written over a light grey circular stamp.

Nicolene Venter
ZITHOLELE CONSULTING (PTY) LTD

Integrated Environmental Authorisation (Environmental Impact Assessment, Waste Management License and Water Use License Applications) Proposed New 30 Year Ash Disposal Facility and Associated Infrastructure at Kendal Power Station



(DEA Ref: 14/12/16/3/3/3/68; NEAS Ref: DEA/EIA/0001624/2013)

EIA NEWSLETTER – AUGUST 2014

PURPOSE OF THIS EIA NEWSLETTER

This EIA Newsletter aims to provide you with an update with regards to the EIA process, including environmental and technical tasks and the public consultation still to be undertaken.

BRIEF PROJECT BACKGROUND

The New 30 Year Ash Disposal Facility (ADF) Environmental Impact Assessment (EIA) process commenced in November 2012 with the announcement of the project. The announcement of the New 30 Year ADF for Kendal Power Station was announced together with the EIA process for the Kendal Continuous ADF.

Zitholele Consulting (Pty) Ltd (hereafter ‘Zitholele Consulting’) was appointed by Eskom to undertake the EIA, Waste Management License and Water Use Licence Applications for the New 30 Year ADF at their Kendal Power Station. Kendal Power Station is a coal-fired Power Station and uses indirect dry-cooling technology. Construction started in July 1982 with its last unit coming into operation in 1993, operating for the last 21 years.

As mentioned when the project was initiated in November 2012, the current ADF of Kendal Power Station is running out of space due to the fact that the life span of Kendal Power Station has been extended to 2053, which would render the available ash disposal

space inadequate to accommodate the continuation of disposal. In addition poor quality coal accessible for combustion is producing more ash than was anticipated in the station planning processes.

Concurrently with this EIA process for the authorisation of the Kendal 30 year ADF, another EIA process is underway to apply for authorisation of the continuation of the existing ADF at Kendal Power Station. An EIA Newsletter in which Interested and Affected Parties (I&APs) were informed of the progress and status of that EIA process was distributed in May 2014. These two EIA processes are being undertaken separately through independent applications to the Competent Authority (CA).

PROJECT DESCRIPTION SUMMARY

As you may recall, during the scoping phase of the EIA nine (9) sites were identified for desk top assessment and they were:

SITE	SIZE	SITE	SIZE
Site A	492 ha	Site B	1137 ha
Site C	950 ha	Site D	622 ha
Site E1	441 ha	Site E2	1280 ha
Site F	1226 ha	Site G	694 ha
Site H	609 ha		

After a rigorous site selection process during the scoping phase, four (4) developable areas from the original nine

(9) were identified as feasible alternatives to be taken through to the impact phase, and they are:

SITE	SIZE	SITE	SIZE
Site B	1137 ha	Site C	950 ha
Site D	622 ha	Site F	1226 ha

After further investigations, site D was eliminated based on geotechnical instability and Site H (609 ha) was reintroduced. Sites B, C, F and H are currently being investigated. The exact shape of Area H is still to be finalised.

Refer to Locality Map (Appendix A).

It has been challenging for the EIA team to find an environmentally and technically suitable site for the new ADF as there are a large number of properties on which mining rights have been registered. It is not a preferred option to place an ADF on a mining right area as it may sterilise the underground minerals. Also, the complexity of establishing an ADF on mined out areas is a limiting factor and feasibility of such an option for the Kendal 30 year ADF project is still being investigated. Mined areas further pose a risk of inherited liability to Eskom w.r.t. existing pollution caused by mining.

It is envisaged that the project will include the design and construction of the following components:

- An ash disposal facility within a 10 km radius of the Kendal Power Station that can accommodate approximately 30 years of ash.
- Conveyance system from the power station to the ash disposal facility;
- Pollution Control Dams;
- Clean and dirty water cut-off and storm water management systems
- Support services including electricity and water supply in the form of power lines, pipelines, associated infrastructure, access and maintenance roads to and from the site, and associated infrastructures such as culverts and channels.

Some of the ADF alternatives, if selected, will require the realignment of certain existing infrastructure, which include roads, pipelines and power lines.

The new ADF will have a footprint area of approximately 410 ha and will reach a maximum height of between 50 and 70 metres. An impermeable barrier system will be constructed under the facility in order to prevent ingress into the groundwater system. All contaminated run-off will be captured and retained in lined earth dams. Approximately 0.5 million m³ of ash will be deposited onto the facility on a monthly basis. Dust suppression systems will be in place to mitigate against the dry ash becoming airborne.

WHERE ARE WE IN THE EIA

Public consultation on the Draft Scoping Report (DSR) was undertaken in June and July 2013. The Final Scoping Report (FSR) and its accompanying documents were submitted to the Department of Environmental Affairs (DEA) in August 2013 for acceptance of the Final Scoping Report (FSR) and approval of the Plan of Study (PoS) for the EIA. Acceptance and approval was received from DEA on 11 September 2013. The FSR is available on Zitholele's website (<http://www.zitholele.co.za/ea-wml-for-30yr-ash-disposal-facility-at-kendal-power-station>) and on Eskom's website (www.eskom.co.za/eia). It is important to note that the public participation process is continuing throughout the EIA process. Should you want a copy of the DEA acceptance letter for the FSR and PoS, please send us your request, in writing, by e-mail, fax or letter (contact details below).

Zitholele Consulting is currently in the Environmental Impact Assessment (EIA) Phase of the project (Figure 1) and it is envisaged that the Draft Environmental Impact Report (DEIR) and Draft Environmental Management Programme (DEMPr) will be available for public review and comment in the first quarter of 2015. You, as an I&AP, will be notified of the availability of all future draft and final documents.

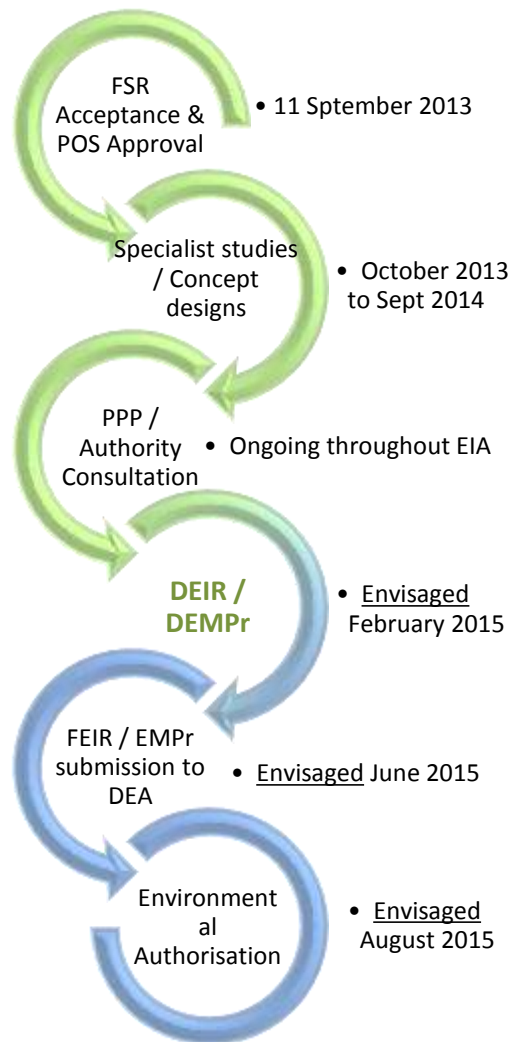


Figure 1: EIA process flow chart

SPECIALIST STUDIES

The following specialist studies were commissioned by Zitholele Consulting based on the potential impacts identified during the Scoping Phase, comments received during public and authority consultation:

- Air Quality;
- Ash Classification;
- Conceptual designs of the ADF;
- Ecology (Terrestrial flora and fauna and Avifauna assessment);
- Geology and Geotechnical Investigations (Phase 1 geotechnical Investigations);
- Groundwater Resources (Geohydrology);
- Heritage;

- Noise Pollution;
- Resource Economics and Sustainability Investigations;
- Social;
- Soils, Land Capability and Agricultural potential;
- Surface Water Resources (hydrology and aquatic ecology) and wetlands (including wetlands delineation);
- Traffic; and
- Visual

These specialists have completed their baseline surveys. Their impact assessments have not yet been finalized. These will be available to I&APs to peruse during the next public review period as indicated above.

DEIR AND EMPr

The DEIR will include details of the public participation process conducted, a detailed description of the proposed development, assessment of the feasible alternatives and detailed concept designs. The DEIR will also include mitigation measures, detailed impact assessment of all impacts identified, detailed specialist investigations, and detailed environmental impact statements. The DEIR will comply with the requirements of National Environmental Management Act, as amended, the EIA regulations (GNR 543 – 546) of 2010.

The DEMPr will detail mitigation and management measures to be undertaken during the construction and operational and closure phases of the ADF. Mitigation and management measures will address potentially significant impacts associated with activities during any of the project phases in order to protect the environment (biophysical as well as social) from harm.

It is envisaged that the DEIR and DEMPr will be made available to I&APs, including commenting authorities, for review and comments in March 2015. The availability of the DEIR and DEMPr as well as the Public Meeting date (refer to Public Participation Process below) will be advertised in the same newspapers, and media, used during the Scoping Phase. After this public and authority review period these documents will be updated, where applicable, with information received from I&APs. The

FEIR and EMPr will be submitted to the public for final review and comment and to DEA for decision-making.

Environmental compliance monitoring will be implemented during the construction and operational phase to ensure compliance with the stipulations of the FEIR, EMPr and the conditions as stipulated in the Waste Management Licence issued by the DEA and the Water Use Licence issued by the Department of Water and Sanitation (previously Department of Water Affairs).

PUBLIC PARTICIPATION PROCESS

We would like to make use of this opportunity to provide I&APs with a brief summary of the Public Participation Process (PPP) undertaken during the Scoping Phase, and the key activities during this phase were:

- Advertisements placed between 28 and 30 November 2012 in the newspapers – *Beeld*, *Die Springs Advertiser*, *Echo*, *Streeknuus*, *Witbank Nuus* and *The Citizen* to announce the opportunity to participate.
- Meetings with authorities to agree on process and study requirements;
- Initial public and landowner notification, which included placing of site notices, the distribution the Background Information Documents (BID) and an invitation to contribute to the EIA process to I&APs in the project area and beyond;
- Distributed and announced the availability of the DSR and Comment and Responses Report (CRR) (same newspapers as per the announcement phase);
- Convened meetings in the project area to obtain comments on the DSR;
- Distributed FSR for I&AP comments simultaneously as when submitted to the DEA.

Public Participation and authority consultation for comments on the DEIR is scheduled to commence in March 2015. Notifications of key Public Participation activities i.e. Public Meeting and availability of the DEIR and DEMPr for review and comment will be undertaken through email and SMS notifications to all registered I&APs on the project database. Those I&APs that do not have emails or cell phones will be notified via fax or mail, depending on the contact details provided by them. The DEIR and DEMPr will be placed in the same

public venues as was done during the Scoping Phase. Registered I&APs can submit a written request for an electronic copy (CD) of the draft and final documents.

CONTINUED PUBLIC INVOLVEMENT

Public involvement is one of the cornerstones of effective environmental assessments as it is your comments that add value to an integrated and sustainable environmental process. It is also a consultation process leading to a joint effort by I&APs, technical specialists, the authorities and the applicant – working together to produce better decisions. We therefore, once again, request your active participation in this phase of the EIA.

WAY FORWARD

Please note that public participation is a continuous communication and consultation process. You will thus be informed through personal correspondence and advertisements of the various remaining stages of this EIA, including the appeal procedures to follow once a decision by the competent authority (DEA) has been reached.

Should you, during this impact assessment phase, require any additional information or wish to submit comments on the proposed ADF project, you are welcome to forward your inputs, in writing or by completing the Comment Form included with this EIA Newsletter, to the Public Participation Office given below.

We look forward to your contributions and continued involvement.

COMMENTS AND QUERIES

Nicolene Venter

PO Box 6002

Halfway House, 1685

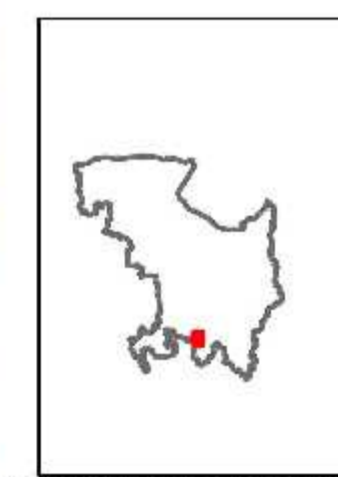
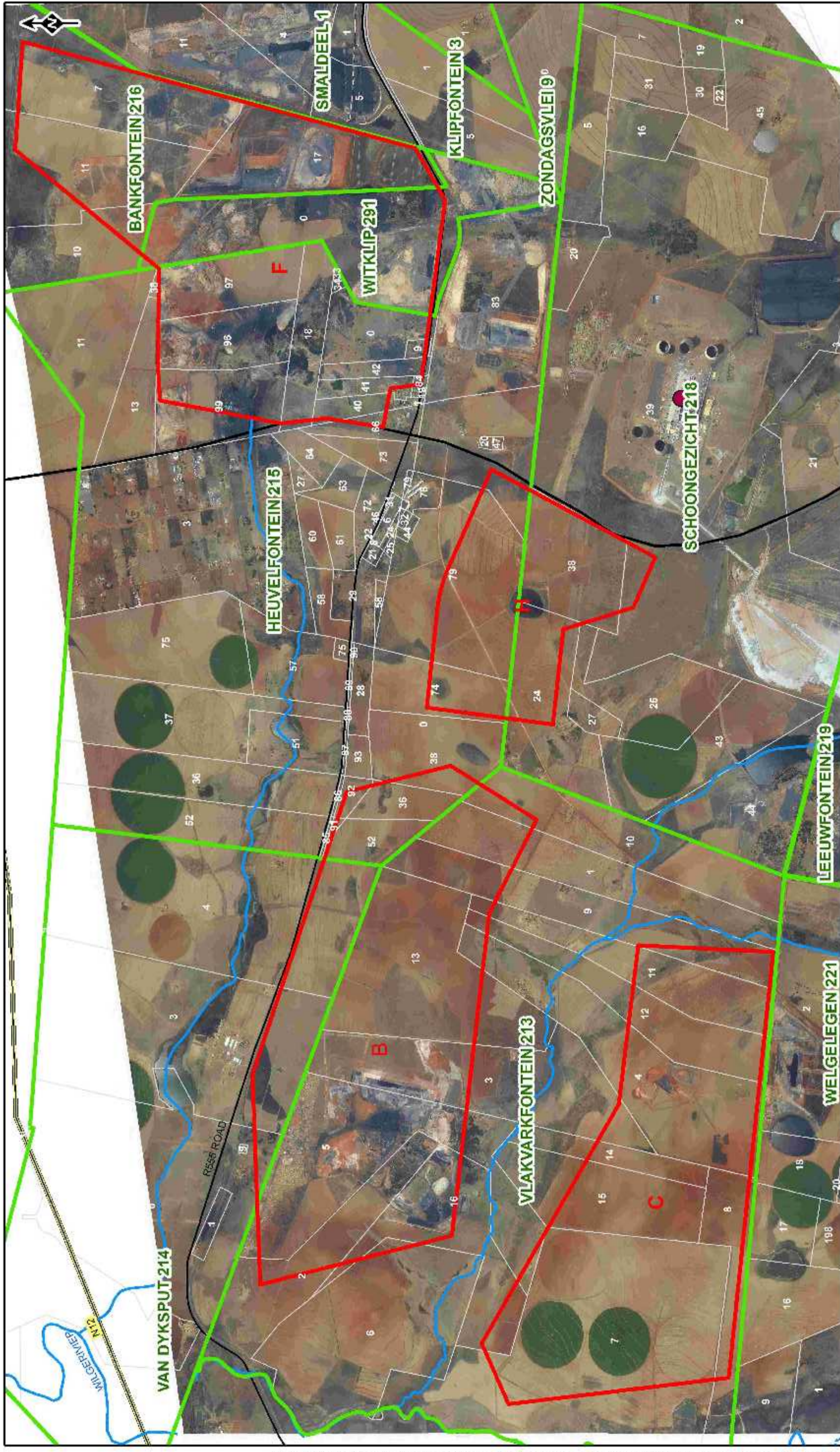
☎ Phone: (011) 207 2060

☎ Fax: 086 676 9950

✉ E-mail: publicprocess@zitholele.co.za

Website: www.zitholele.co.za

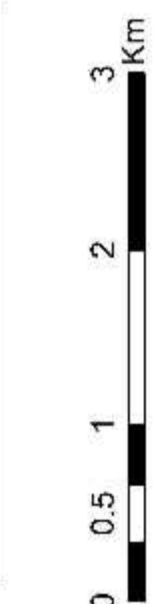
Documents Included: EIA Newsletter Comment Form
EIA Locality Map



LEGEND

- Kendal Power Station
- Site Alternative
- Parent farms
- National Roads
- Main Roads
- Rivers
- Farm portions

RESOURCES NOTES



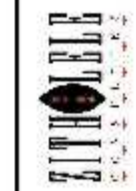
PROJECT

KENDAL 30 YEAR ASH FACILITY

TITLE

SITE ALTERNATIVES

PROJECT No: 2835	
DATE	SCALE 1:45,000
TO 21/07/2014	TO 31/07/2014
BY C. DICK	BY C. DICK
REVIEW TO 31/07/2014	REVIEW TO 31/07/2014
BY J. J. J. J.	BY J. J. J. J.
REVISED	REVISED



REFERENCE
 PROJECTION: UTM, WGS 1984

**Integrated Environmental Authorisation
(Environmental Impact Assessment, Waste
Management License and Water Use License
Applications)**

**Proposed 60 Year Ash Disposal Facility and
Associated Infrastructure at Kendal Power
Station**

DEA Ref No 14/12/16/3/3/3/68 and NEAS Ref No: DEA/EIA/0001624/2013)

EIA NEWSLETTER COMMENT SHEET

August 2014



EIA Public Participation Office

Nicolene Venter
Zitholele Consulting (Pty) Ltd
P O Box 6002, Halfway House, 1685
Tel: (011) 207 2076/2075/2077
Fax: 086-676-9950
Email: publicprocess@zitholele.co.za

Please complete and return to the Public Participation Office (as above)

TITLE		NAME	
SURNAME			
ORGANISATION (if applicable) (Please do not use any acronyms)			
ADDRESS		POSTAL CODE	
TEL NO.			
CELL NO.			
FAX NO.			
E-MAIL ADDRESS			
SIGNATURE		Farm name and portion number if you are a potentially affected landowner or own property adjacent to the proposed sites	
DATE			

COMMENTS ON INFORMATION AS PER THE EIA NEWSLETTER (Please use separate sheets if necessary)

.....

.....

.....

.....

.....

.....

.....

.....

.....

.....

THANK YOU FOR YOUR CONTRIBUTION

Zitholele Consulting

Reg. No. 2000/000392/07

PO Box 6002 Halfway House 1685, South Africa
Building 1, Maxwell Office Park, Magwa Crescent West
c/o Allandale Road & Maxwell Drive, Waterfall City, Midrand
Tel + (27) 11 207 2060
Fax + (27) 86 674 6121
E-mail : mail@zitholele.co.za



Our Ref : 12935-Let-EIA Newsletter

04 Augustus 2014

Geagte Belanghebbender

EIA Nuusbrief: Geïntegreerde Omgewingsmagtiging (Omgewingsimpakevaluering en Aansoeke om Afvalbestuurslisensie en Watergebruiklisensie) – Voorgestelde Nuwe 30-jaar Asverwyderingsinstallasie en Gepaardgaande Infrastruktuur by die Kendal Kragstasie

Vind asseblief hierby aangeheg die volgende dokumente vir u aandag:

- OIE Nuusbrief;
- OIE Nuusbrief Kommentaarvorm; en
- OIE Liggingskaart.

Ons sien uit daarna om u kommentaar te ontvang.

Yours faithfully

A handwritten signature in black ink, appearing to read 'Nicolene Venter', is written over a light grey circular stamp.

Nicolene Venter
ZITHOLELE CONSULTING (PTY) LTD

Geïntegreerde Omgewingsmagtiging (Omgewingsimpakevaluering, Aansoeke om Afvalbestuurslisensie en Watergebruiklisensie) Voorgestelde Nuwe 30-jaar Asverwyderingsinstallasie en Gepaardgaande Infrastruktuur by die Kendal Kragstasie



(DO Verw.: 14/12/16/3/3/3/68; NEAS Verw.: DEA/EIA/0001624/2013)

OIE NUUSBRIEF – AUGUSTUS 2014

DOEL VAN HIERDIE OIE NUUSBRIEF

Hierdie OIE Nuusbrieff poog om u op datum te bring met betrekking tot die OIE-proses, insluitend die omgewings- en tegniese take en die openbare raadpleging wat nog onderneem moet word.

KORT PROJEKAGTERGROND

Die Omgewingsimpakevalueringproses (OIE-proses) vir die Nuwe 30-jaar Asverwyderingsinstallasie (AVI) het in November 2012 'n aanvang geneem met die aankondiging van die projek. Die aankondiging van die Nuwe 30-jaar AVI vir Kendal Kragstasie is tesame met die OIE-proses vir die Kendal AVI met Deurlopende Werking aangekondig.

Zitholele Consulting (Edms.) Bpk. (hierna 'Zitholele Consulting' genoem) is deur Eskom aangestel om die OIE, Aansoek om Afvalbestuurslisensie en Aansoek om Watergebruiklisensie vir die Nuwe 30-jaar AVI by hul Kendal Kragstasie te onderneem. Kendal Kragstasie is 'n steenkoolkragstasie en maak gebruik van indirekte droëkoelingtegnologie. Konstruksie het in Julie 1982 begin met die laaste eenheid wat in 1993 in bedryf gekom het en vir die afgelope 21 jaar in bedryf staan.

Soos genoem, toe die projek in November 2012 'n aanvang geneem het, het Kendal Kragstasie se huidige AVI se spasie opgeraak weens die feit dat die lewensduur van

die Kendal Kragstasie tot 2053 verleng is, wat die beskikbare asverwyderingspasie onvoldoende sal maak om die deurlopende verwydering van as te akkommodeer. Daarbenewens produseer die lae gehalte steenkool wat beskikbaar is vir verbranding meer as as wat tydens die stasie se beplanningprosesse in die vooruitsig gestel is.

Tesame met hierdie OIE-proses vir die magtiging van die Kendal 30-jaar AVI, is 'n ander OIE-proses aan die gang om aansoek te doen om magtiging vir die voortsetting van die bestaande AVI by Kendal Kragstasie. 'n OIE-nuusbrieff, waarin Belangstellende en Geaffekteerde Partye (B&GP's) ingelig is van die vordering en status van die OIE-proses, is in Mei 2014 uitgegee. Hierdie twee OIE-prosesse word apart deur onafhanklike aansoeke by die Bevoegde Owerheid (BO) onderneem.

OPSOMMENDE PROJEKBESKRYWING

U sal dalk onthou dat daar tydens die bestekopnamefase van die OIE nege (9) terreine geïdentifiseer is vir kantoor (desk top) evaluering, naamlik:

TERREIN	GROOTTE	TERREIN	GROOTTE
Terrein A	492 ha	Terrein B	1 137 ha
Terrein C	950 ha	Terrein D	622 ha
Terrein E1	441 ha	Terrein E2	1 280 ha
Terrein F	1 226 ha	Terrein G	694 ha
Terrein H	609 ha		

Ná 'n strawwe proses van terreinseleksie tydens die bestekopnamefase, is vier (4) ontwikkelbare gebiede uit die oorspronklike nege (9) geïdentifiseer as bedryfbare alternatiewe wat tot by die impakfase geneem gaan word, naamlik:

TERREIN	GROOTTE	TERREIN	GROOTTE
Terrein B	1 137 ha	Terrein C	950 ha
Terrein D	622 ha	Terrein F	1 226 ha

Ná verdere ondersoek is Terrein D uitgeskakel gegrond op geotegniese onstabiliteit en Terrein H (609 ha) is weer ingesluit. Terrein B, C, F en H word tans ondersoek. Die presiese vorm van Gebied H moet nog gefinaliseer word.

Sien Liggingkaart (Aanhangsel A).

Dit was 'n uitdaging vir die OIE-span om 'n terrein vir die nuwe AVI op te spoor wat geskik is vanuit 'n omgewings- en tegniese oogpunt, aangesien daar baie eiendomme is waarop mynregte geregistreer is. Dit is nie 'n wenslike opsie om 'n AVI in 'n gebied met mynregte te plaas nie, aangesien dit die ondergrondse minerale kan steriliseer. Die kompleksiteit van die oprigting van 'n AVI op gebiede wat uitgemyn is, is ook 'n beperkende faktor en die bedryfbaarheid van so 'n opsie vir die Kendal 30-jaar AVI-projek word nog ondersoek. Gebiede wat gemyn is, hou vir Eskom 'n verdere risiko van oorgeëfde aanspreeklikheid in met betrekking tot bestaande besoedeling wat deur mynbou veroorsaak is.

Daar word in die vooruitsig gestel dat die projek die ontwerp en oprigting van die volgende komponente sal insluit:

- 'n Asverwyderingsinstallasie binne 'n 10 km radius vanaf die Kendal Kragstasie wat sowat 30 jaar se as kan akkommodeer.
- 'n voerbandstelsel van die kragstasie af tot by die asverwyderingsinstallasie;
- besoedelingsbeheerdamme;
- skoon- en vuilwater afsny- en stormwaterbeheerstelsels; en
- steundienste, insluitend elektrisiteit- en watertoevoer in die vorm van kraglyne, pyplyne, gepaardgaande infrastruktuur, toegangs- en instandhoudingspaaie na en van die terrein, asook gepaardgaande infrastruktuur soos duikers en kanale.

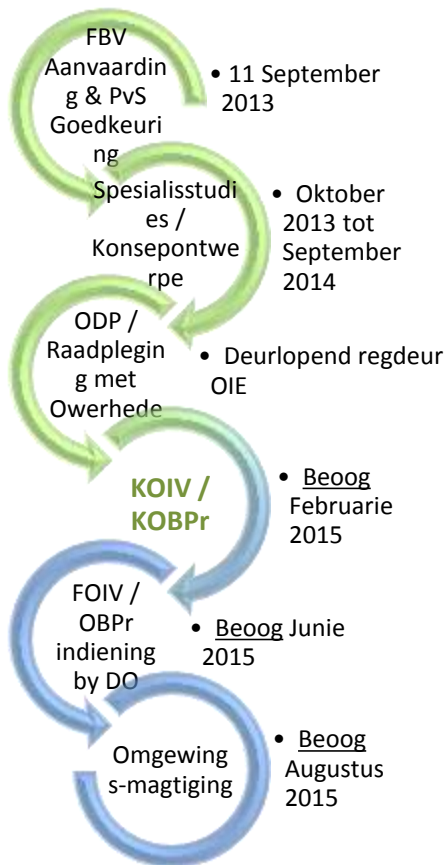
Party van die AVI alternatiewe, indien dit gekies sou word, sal die herbelyning van sekere bestaande infrastruktuur, insluitend paaie, pyplyne en kraglyne, verg.

Die nuwe AVI sal 'n voetspooroppervlak van sowat 410 ha hê en sal 'n maksimum hoogte van tussen 50 en 70 meter bereik. 'n Ondeurdringbare versperringstelsel sal onder die installasie gebou word ten einde insypeling in die grondwaterstelsel te voorkom. Alle besoedelde afloop sal opgevang en in gevoerde gronddamme behou word. Nagenoeg 0,5 miljoen m³ as sal maandeliks op die installasie gestort word. Stofonderdrukkingstelsels sal in plek wees as teenvoeter dat die droë as nie in die lug opwaai nie.

WAAR IN DIE OIE IS ONS?

Openbare raadpleging oor die Konsep Bestekopnameverslag (KBV) is in Junie en Julie 2013 onderneem. Die Finale Bestekopnameverslag (FBV) en gepaardgaande dokumente is in Augustus 2013 by die Departement van Omgewingsake (DO) ingedien vir aanvaarding van die Finale Bestekopnameverslag (FBV) en goedkeuring van die Plan van Studie (PvS) vir die OIE. Aanvaarding en goedkeuring is op 11 September 2013 van die DO ontvang. Die FBV is op Zitholele se webwerf (<http://www.zitholele.co.za/ea-wml-for-30yr-ash-disposal-facility-at-kendal-power-station>) en op Eskom se webwerf (www.eskom.co.za/eia) beskikbaar. Dit is belangrik om daarop te let dat die openbare deelnameproses regdeur die OIE-proses voortduur. Indien u 'n afskrif van die DO se aanvaardingsbrief vir die FBV en PvS wil ontvang, stuur asseblief aan ons u skriftelike versoek deur e-pos, faks of brief (kontakbesonderhede hieronder).

Zitholele Consulting is tans in die Omgewingsimpak-evalueringsfase (OIE-fase) van die projek (Figuur 1) en daar word in die vooruitsig gestel dat die Konsep Omgewingsimpakverslag (KOIV) en Konsep Omgewingsbestuursprogram (KOBPr) in die eerste kwartaal van 2015 beskikbaar sal wees vir openbare besigtiging en kommentaar. U, as 'n B&GP, sal in kennis gestel word van die beskikbaarheid van alle toekomstige konsep- en finale dokumente.



Figuur 1: OIE-proses vloeikaart

SPESIALISSTUDIES

Zitholele Consulting het die volgende spesialisstudies laat onderneem gegrond op die potensiële impakte wat tydens die Bestekopnamefase geïdentifiseer is, en kommentaar wat tydens die openbare en owerheidsraadpleging ontvang is:

- Luggehalte;
- Asklassifikasie;
- Konsepuele ontwerpe van die AVI;
- Ekologie (Terrestriële flora en fauna en Avifauna-evaluering);
- Geologie en Geotegniese Ondersoeke (Fase 1 Geotegniese Ondersoeke);
- Grondwaterhulpbronne (Geohidrologie);
- Erfenis;
- Geraasbesoedeling;
- Hulpbronnbestuur- en Volhoubaarheidsondersoeke;
- Maatskaplik;
- Grond, Grondvermoë en Landboupotensiaal;
- Oppervlakwaterhulpbronne (hidrologie en waterekologie) en vleilande (insluitende die afbakening van vleilande);

- Verkeer; en
- Visueel.

Hierdie spesialiste het hul basislynopnames voltooi. Hul impakevaluering is nog nie afgehandel nie. Dit sal aan B&GP's beskikbaar gestel word om na te gaan tydens die volgende openbare besigtigingstydperk soos hierbo aangedui.

KOIV en OBPr

Die KOIV sal besonderhede van hoe die openbare deelnameproses uitgevoer is, 'n gedetailleerde beskrywing van die voorgestelde ontwikkeling, evaluering van die bedryfbare alternatiewe en gedetailleerde konsepontwerpe insluit. Die KOIV sal ook versagtingsmaatreëls, 'n gedetailleerde impakevaluering van alle geïdentifiseerde impakte, gedetailleerde spesialisondersoeke en gedetailleerde omgewingsimpakverklarings bevat. Die KOIV sal voldoen aan die vereistes van die Nasionale Wet op Omgewingsbestuur, soos gewysig, asook aan die OIE-regulasies (Staatskennisgewing R543 – R546) van 2010.

Die KOBPr sal die versagtings- en bestuursmaatreëls uiteensit wat tydens die konstruksie-, bedryfs- en sluitingsfase van die AVI onderneem moet word. Versagtings- en bestuursmaatreëls sal die potensieel wesenlike impakte aanspreek wat met die werksaamhede tydens enige van die fases van die projek gepaard gaan ten einde die omgewing (biofisies sowel as maatskaplik) teen skade te beskerm.

Daar word in die vooruitsig gestel dat die KOIV en KOBPr in Maart 2015 aan B&GP's en owerhede wat kommentaar lewer, beskikbaar gestel gaan word vir oorsig en kommentaar. Die beskikbaarheid van die KOIV en KOBPr, asook die datum van die Openbare Vergadering (sien Openbare Deelnameproses hieronder), sal in dieselfde koerante en media geadverteer word wat tydens die Bestekopnamefase gebruik is. Na afloop van hierdie openbare en owerheidsoorsigtydperk sal hierdie dokumente, waar van toepassing, bygewerk word met inligting wat van B&GP's ontvang is. Die FOIV en OBPr sal aan die publiek voorgelê word vir finale oorsig en kommentaar en aan die DO vir besluitneming.

Monitering van omgewingsvoldoening sal tydens die konstruksie- en bedryfsfase geïmplementeer word om te verseker dat daar voldoen word aan die bepalinge van die FOIV, OBPr en die voorwaardes wat uiteengesit is in die

Afvalbestuurslisensie wat deur die DO en die Watergebruiklisensie wat deur die Departement van Water en Sanitasie (vorige Departement van Waterwese) uitgereik is.

OPENBARE DEELNAMEPROSES

Ons wil graag van hierdie geleentheid gebruik maak om aan B&GP's 'n kort opsomming van die Openbare Deelnameproses (ODP) te bied wat tydens die Bestekopnamefase onderneem is en die belangrikste aktiwiteite tydens hierdie fase was:

- Advertensies wat tussen 28 en 30 November 2012 in die volgende koerante geplaas is – *Beeld, Die Springs Advertiser, Echo, Streeknuus, Witbank Nuus* en *The Citizen* om die geleentheid vir deelname aan te kondig;
- Vergaderings met owerhede om ooreen te kom oor die proses en studievereistes;
- Aanvanklike kennisgewing aan die publiek en grondeienaars, wat insluit die plasing van terreinkennisgewings, die verspreiding van Agtergrondinligtingsdokumente (AID's) en 'n uitnodiging aan B&GP's in die projekgebied en verder om tot die OIE-proses by te dra;
- Die KBV en Kommentaar-en-Antwoordverslag (KAV) is versprei en die beskikbaarheid daarvan is aangekondig (dieselfde koerante as in die aankondigingsfase);
- Vergaderings is in die projekgebied belê om kommentaar oor die KBV te bekom;
- Die verspreiding van die FBV vir kommentaar deur B&GP's op dieselfde tyd as wat dit by die DO ingedien is.

Openbare deelname en raadpleging met owerhede vir kommentaar oor die KOIV is geskeduleer om in Maart 2015 'n aanvang te neem. Kennisgewings van belangrike Openbare Deelname-aktiwiteite, bv. Openbare Vergadering en die beskikbaarheid van die KOIV en KOBPr vir besigtiging en kommentaar, sal deur e-pos en SMS-kennisgewings aan alle B&GP's op die projek se databasis geskied. Dié B&GP's wat nie oor e-pos of selfone beskik nie, sal per faks of pos in kennis gestel word, afhangend van die kontakbesonderhede wat deur hulle verskaf is. Die KOIV en KOBPr sal by dieselfde openbare plekke geplaas word wat tydens die Bestekopnamefase gebruik is. Geregistreerde B&GP's kan 'n skriftelike versoek rig vir 'n elektroniese weergawe (CD) van die konsep- en finale dokumente.

VOORTGESETTE OPENBARE BETROKKENHEID

Openbare betrokkenheid is een van die hoekstene van effektiewe omgewingsevaluering aangesien dit u kommentaar is wat waarde tot 'n geïntegreerde en volhoubare omgewingsproses toevoeg. Dit is ook 'n raadplegingsproses wat lei tot 'n gesamentlike poging deur B&GP's, tegniese spesialiste, die owerhede en die applikant – wat almal saamwerk om beter besluite te neem. Daarom versoek ons weereens u aktiewe deelname aan hierdie fase van die OIE.

WEG VORENTOE

Neem asseblief kennis dat openbare deelname 'n deurlopende kommunikasie- en raadplegingsproses is. U sal dus deur persoonlike korrespondensie en advertensies verwittig word van die verskeie oorblywende stadiums van hierdie OIE, insluitend die appèlprosedures om te volg wanneer 'n besluit deur die bevoegde owerheid (DO) geneem is.

Indien u tydens hierdie impakevalueringsfase enige verdere inligting verlang of kommentaar wil indien betreffende die voorgestelde AVI-projek, is u welkom om u insette skriftelik aan die Openbare Deelnamekantoor hieronder te stuur deur die Kommentaarvorm in te vul wat by hierdie OIE-nuusbrief ingesluit is.

Ons sien uit na u bydraes en voortgesette betrokkenheid.

KOMMENTAAR EN NAVRAE

Nicolene Venter

Posbus 6002

Halfweghuis, 1685

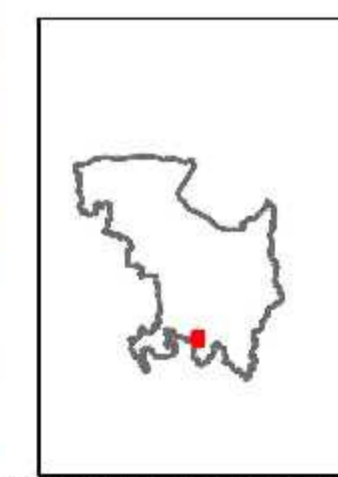
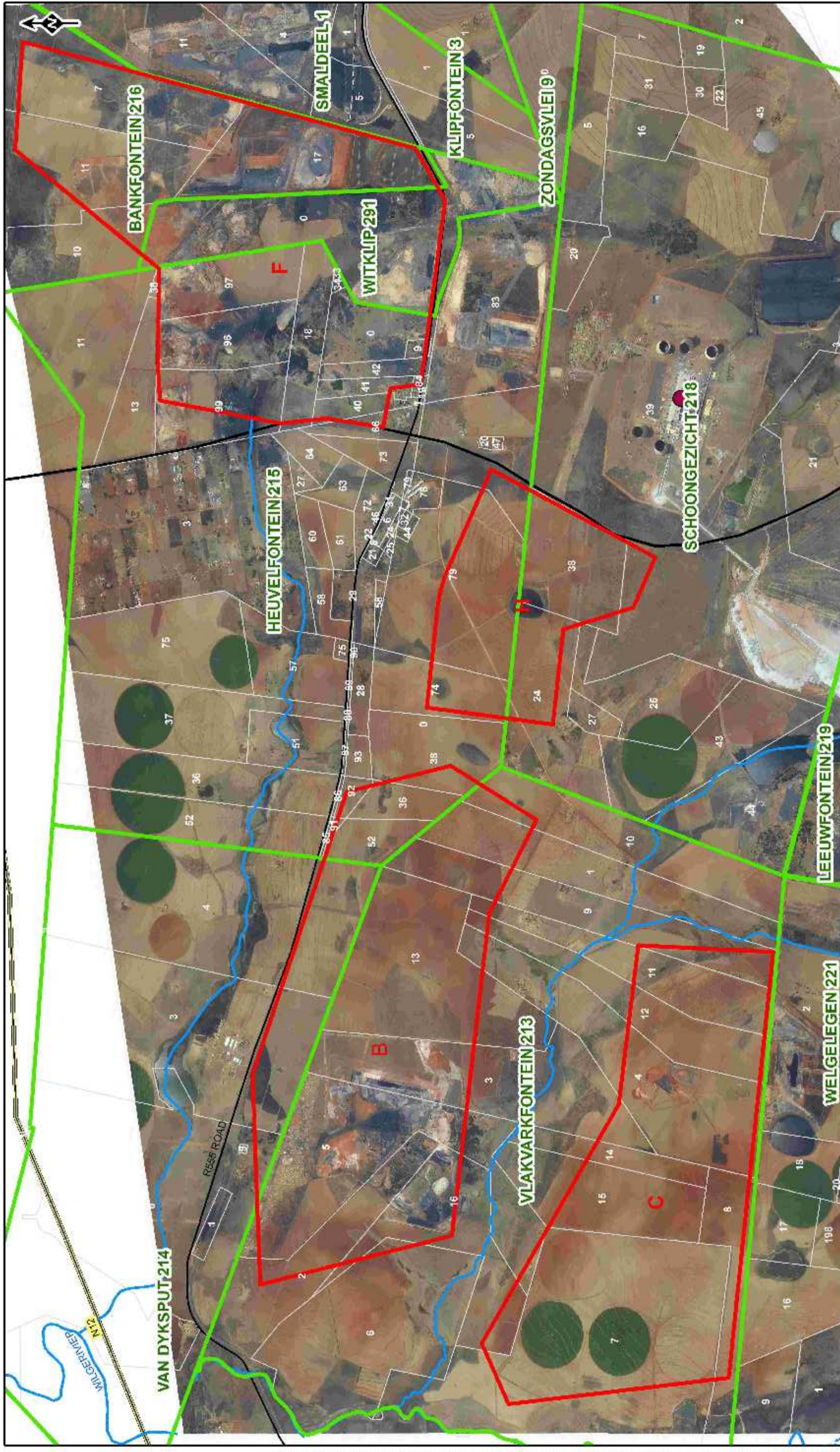
☎ Telefoon: 011 207 2060

📠 Faks: 086 676 9950

📧 E-pos: publicprocess@zitholele.co.za

Webwerf: www.zitholele.co.za

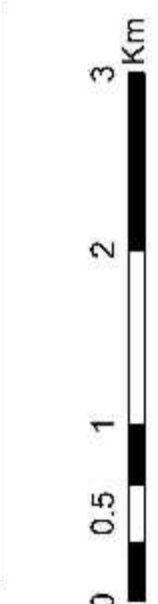
Ingeslote dokumente: OIE Nuusbrief Kommentaarvorm
OIE Liggingkaart



LEGEND

- Kendal Power Station
- Site Alternative
- National Roads
- Main Roads
- Rivers
- Parent farms
- Farm portions

RESOURCES NOTES



PROJECT

KENDAL 30 YEAR ASH FACILITY

TITLE

SITE ALTERNATIVES

		PROJECT No: 2835 SCALE 1:4,000
GIS TO 21/07/2014 C. DICK TO 21/07/2014 REVIEW TO 21/07/2014	AS	REV: 0

**Geïntegreerde Omgewingsmagtiging
(Omgewingsimpakstudies, Aansoeke om
Afvalbestuurslisensie en
Waterbestuurslisensie)
Voorgestelde 60-jaar
Asverwyderingsinstallasie en Gepaardgaande
Infrastruktuur by die Kusile Kragstasie**

DO Verw.: 14/12/16/3/3/3/68 en NEAS Verw.: DEA/EIA/0001624/2013

**KOMMENTAARVORM
OIS NUUSBRIEF**

Augustus 2014



OIE Publieke Deelname Kantoor

Nicolene Venter
Zitholele Consulting (Edms) Bpk
Posbus 6002, Halfway House, 1685
Tel: (011) 207 2076/2075/2077
Faks: 086-676-9950
E-pos: publicprocess@zitholele.co.za

Voltooi asseblief en stuur terug aan die Publieke Deelname Kantoor (inligting soos bo)

TITEL		NAAM	
VAN			
ORGANISASIE (Vermy asb afkortings)			
ADRES		POSKODE	
TEL NO.			
SELFOON NO.			
FAKS NO.			
E-POS ADRES			
HANDTEKENING		Plaasnaam en gedeeltenommer, indien u moontlik geaffekteerde grondeienaar is of u eiendom aangresend tot die voorgestelde terreine is	
DATUM			

KOMMENTAAR RAKENDE INLIGTING VOORSIEN IN DIE OIE NUUSBRIEF (Gebruik asb addisionele bladsye, indien nodig)

.....

.....

.....

.....

.....

.....

.....

.....

.....

.....

DANKIE VIR U BYDRAE

Zitholele Consulting

Reg. No. 2000/000392/07

PO Box 6002 Halfway House 1685, South Africa
Building 1, Maxwell Office Park, Magwa Crescent West
c/o Allandale Road & Maxwell Drive, Waterfall City, Midrand
Tel + (27) 11 207 2060
Fax + (27) 86 674 6121
E-mail : mail@zitholele.co.za



Our Ref : 12935-83-Let-001-Project Status Notification Letter

27 August 2015

Dear Sir/Madam

INTEGRATED ENVIRONMENTAL ASSESSMENT , WASTE MANAGEMENT LICENSE AND WATER USE LICENSE APPLICATIONS) FOR THE PROPOSED NEW 30 YEAR ASH DISPOSAL FACILITY AND ASSOCIATED INFRASTRUCTURE AT KENDAL POWER STATION (DEA Ref: 14/12/16/3/3/68; NEAS Ref: DEA/EIA/0001624/2013)

• **NOTIFICATION OF PROJECT STATUS**

You may recall our Newsletter dated August 2014 informing you that Zitholele Consulting had commenced with the Draft Environmental Impact Assessment (Draft EIA) stage of the Environmental Impact Assessment (EIA) process which would have been available in the first quarter of 2015.

This letter serves as a Project Update. The project is still active. Zitholele is currently awaiting a Water Use Licence (WUL) from the Department of Water and Sanitation (DWS) to undertake drilling of five boreholes on the preferred site (Site H). This drilling is required to inform a surface and groundwater interaction study for this site. Please refer to the attached map for the latest shape and size of Site H. Conceptual engineering designs have been undertaken and this process has necessitated changes from the layout indicated in the August 2014 newsletter. The latest Site H as per the attached map is approximately 404 ha in size. The map also indicates the deviation of the D1390 road.

Assuming that the WUL for the drilling is received in November 2015, the Draft Environmental Impact Report (DEIR) will be made available for public review in March 2016.

Kind regards

A handwritten signature in black ink, appearing to read 'Nicolene'.

Nicolene Venter
Public Participation Practitioner
ZITHOLELE CONSULTING (PTY) LTD