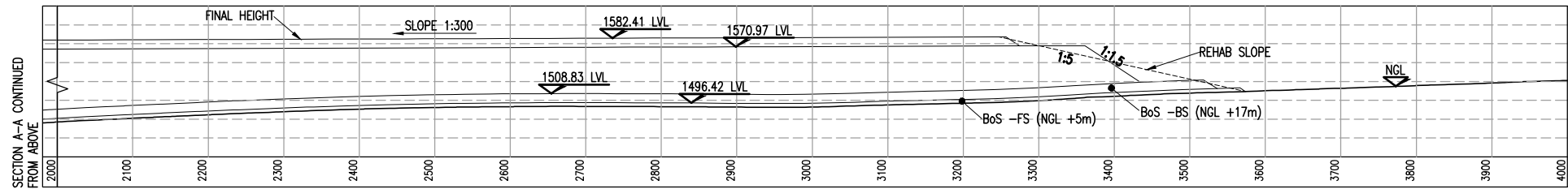
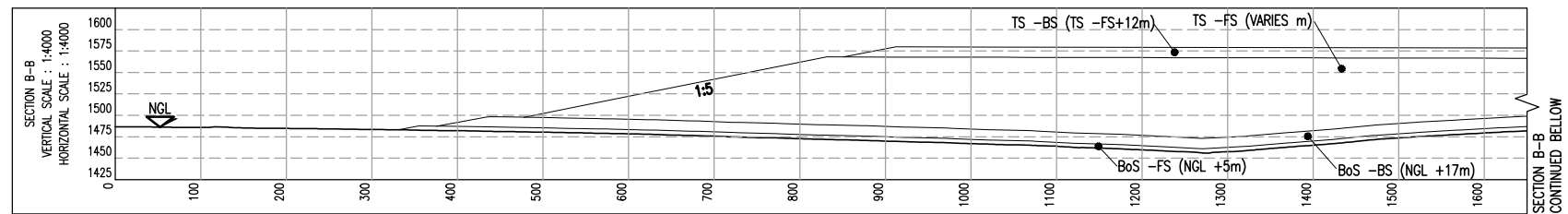


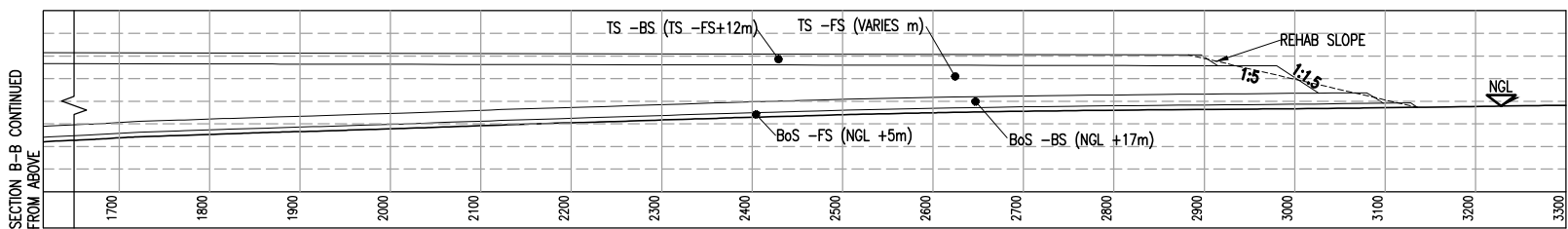
SECTION A-A  
1:4000



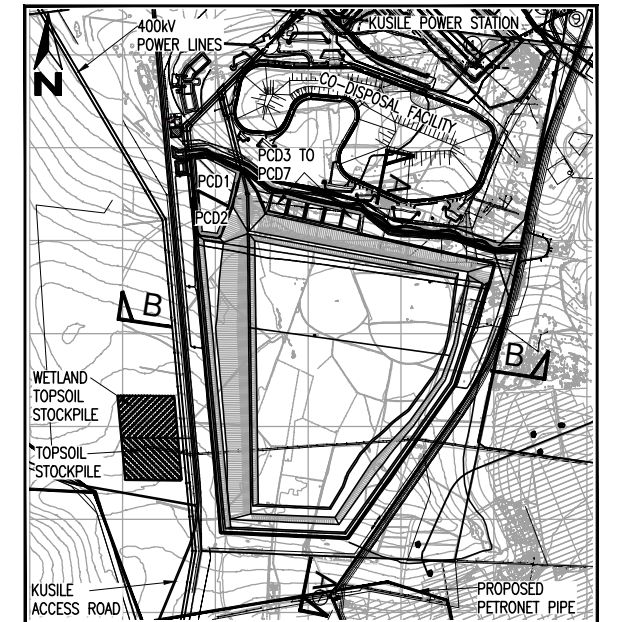
SECTION A-A (CONTINUED)  
1:4000



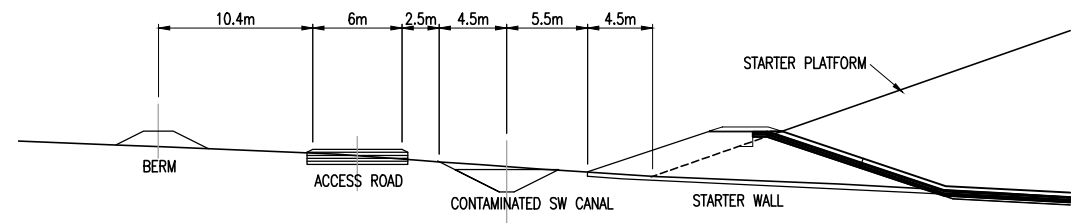
SECTION B-B  
1:4000



SECTION B-B (CONTINUED)  
1:4000



KEY PLAN  
SCALE 1 : 40 000




TYPICAL INFRASTRUCTURE CROSS SECTION

- KEY
- TS = TOP STACK
  - BoS = BOTTOM STACK
  - BS = BACK STACK
  - FS = FRONT STACK
  - N.G.L. = NATURAL GROUND LEVEL

Rev.	Description	Name	Date	Approved
C	REVISED & ADDED STILLING BASINS, REVISED ACCESS ROADS, UPDATED TITLE BLOCK	R.McL.	18.03.14	C.C.
B	POWER STATION, ACCESS ROADS AND RIVER DIVERSION UPDATED	R.McL.	12.12.13	C.C.
A	ISSUED FOR INFORMATION	R.McL.	07.08.13	C.C.

Reference Drawings: D121-01-001

COPYRIGHT : THIS DRAWING IS THE PROPERTY OF JONES & WAGENER (PTY) LIMITED AND MAY NOT BE USED OR REPRODUCED IN WHOLE OR PART WITHOUT THEIR WRITTEN CONSENT



**Jones & Wagener**  
Engineering & Environmental Consultants

Box 1434 Rivonia 2128 South Africa  
Tel. (011) 519-0200  
Fax. (011) 519-0201  
Email post@jaws.co.za

Drawn	R.McL.	09.07.13
Designed	C.C.	JULY 13
Checked	D.B.	JULY 13
Pr. Eng. Approval	C.C.	.
Signature		

Client: ZITHOLELE CONSULTING

Project: KUSILE POWER STATION  
60 YEAR ASH FACILITY  
EIA DETAILED CONCEPT DESIGN  
TYPICAL LONG SECTIONS & DETAILS

Scale	AS SHOWN	A1
Drawing No	D121-01-003	
Revision	C	