

## What does the Tutuka Project Entail?

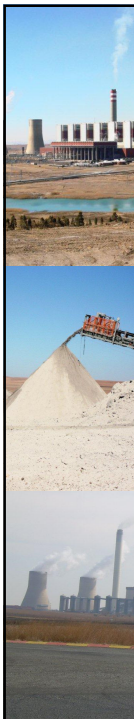
**Presented by:  
E van Rensburg – Tutuka Power Station**

The figure is a presentation slide with a red background. It features a vertical strip of four images on the left side: a power station, a landscape, a conveyor belt, and a power station. The main text is centered and reads "What does the Tutuka Project Entail?" followed by "Presented by: E van Rensburg – Tutuka Power Station". The Lidwala logo is in the bottom right corner.



## Problem Statement

- The current main dump operation will run out of space by September 2028
- The position three standby ash dump will run out of space by December 2016.
- If standby dump positions 4,5 and 6 are used, then it will run out of space by 2020.
- The main spreader requires outages for major repairs.
- The existing emergency ash handling area at the Power Station is too small.



## What does the Project Entail?

- Tutuka Power Station envisages the continuation of dry ash disposal over Eskom owned land, purchased before the commencement of environmental laws, such as the Environment Conservation Act
- Eskom would like to align its continued ashing activities, with the requirements of the NEMWA waste licensing processes
- The proposed continuous development is an ash disposal facility with the following specifications:
  - Capacity of airspace of 353,1 million m<sup>3</sup> (Existing and remaining); and
  - Ground footprint of 759 Ha (Proposed Continuous Ashing & pollution control canals)
- The project also includes the expansion of the emergency ashing area at the power station from approximately 1900m<sup>2</sup> to 21 000m<sup>2</sup>



# Proposal

- Convert the existing main dump operation to radial operation.
- Expand the ash dump to the south side which becomes the new standby ash dump.
- Construction of new channels, pipes, fences and roads.
- Construct new spreader system.
- Construct concrete slabs and channels at the emergency off loading area.

