

Mr. Chakane Sibaya  
Air Quality Officer  
Fizile Dabi District Municipality  
P.O. Box 10  
Sasolburg  
1947

Date:  
24 February 2023

Enquiries:  
W de Klerk  
Tel +27 16 457 5308

Ref. LRP02PLA000 \_0331/20221208

Dear Mr. Sibaya,

## **LETHABO POWER STATION EMISSION MONTHLY REPORT FOR NOVEMBER 2022 RESUBMISSION**

Please find attached revised emissions report for the month of November 2022 for Lethabo Power Station.

The resubmission is made due to the Unit 5 gaseous correlation curve that expired in July 2022 and the data was backfitted with a valid correlation curve which was implemented in December 2022. As such, the monthly reports for this period were revised. Additionally, a revised emissions reporting tool were used to improve the integrity of reported data.

Also attached are the Ambient Air Quality Monitoring Report, Complaints Register and the Fugitive dust Fallout Monitoring Report for November 2022.

For additional information please do not hesitate to contact us.

Yours sincerely



Bongani Mvelase  
**GENERAL MANAGER**



Report

Lethabo Power Station

Report name: **Lethabo Power Station  
November 2022  
Emission Report**

Reference number: **LRP02PLA000\_0331/20221208**  
Document Type: **Report**  
Area of Applicability: **Environment**  
Report Date: **December-2022**  
Classification: **Controlled Disclosure**


Signatures:

Compiled by:

  
.....  
P Parag  
System Engineer

Date: 2023/02/17  
.....

Verified by:

  
.....  
W de Klerk  
Senior Advisor Environment

Date: 2023 02 20  
.....

Reviewed by:

pp   
.....  
N Mazibuko  
BPE Manager

Date: 20/02/2023  
.....

Reviewed by:

  
.....  
C Govinden  
PE Manager


Date: 2023-02-21  
.....

Reviewed by:

  
.....  
L Nel  
C&I Manager

Date: 2023-02-21  
.....

Reviewed by:

  
.....  
M Hariram  
Environmental Manager

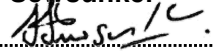
Date: 2023-02-22  
.....

Approved by:  
Nathi Mazibuko

  
.....  
Engineering Manager

Date: 2023/02/23  
.....

Approved by:  
H Sewsunker

  
.....  
Technical Plant Manager

Date: 2023/02/23  
.....

**CONTROLLED DISCLOSURE**

When downloaded from the database, this document is uncontrolled and it is the responsibility of the user to ensure that it is the same as the authorised revision on the data base

Copyright © 2008, Eskom Generation, Lethabo Power Station

**LETHABO POWER STATION MONTHLY EMISSIONS REPORT**

Atmospheric Emission License FDDM-MET-2011-08-P1


**1. RAW MATERIALS AND PRODUCTS**

Raw Materials and Products	Raw Material Type	Units	Maximum Permitted Consumption Rate	Consumption Rate Nov-2022
	Coal	Tons	2 000 000	1 355 749
	Fuel Oil	Tons	1 700	864.97
Production Rates	Product / By-Product Name	Units	Maximum Production Capacity Permitted	Production Rate Nov-2022
	Energy	GWh	2743.2	1 883.51
	Ash	Tons	770 000	523 454.5
	RE Ash	kg/MWh	<i>Not Specified</i>	277.91

**2. ENERGY SOURCE CHARACTERISTICS**

Coal Characteristic	Units	Stipulated Range	Monthly Average Content
Sulphur Content	%	0.656 ( <i>Standard</i> )	0.700
Ash Content	%	37.37 ( <i>Standard</i> )	38.610

\*Please note the "standard" is not necessary a limit, but merely a optimum indication, it will fluctuate as the coal quality changes. The Stipulated Range are the Station acceptance test values.

### 3. EMISSION LIMITS (mg/Nm<sup>3</sup>)

Associated Unit/Stack	PM	SO <sub>2</sub>	NOx
Unit 1	100	3500	1100
Unit 2	100	3500	1100
Unit 3	100	3500	1100
Unit 4	100	3500	1100
Unit 5	100	3500	1100
Unit 6	100	3500	1100

### 4. ABATEMENT TECHNOLOGY (%)

Associated Unit/Stack	Technology Type	Efficiency Nov-2022
Unit 1	<i>Electrostatic Precipitator (ESP)</i>	99.77%
Unit 2	<i>Electrostatic Precipitator (ESP)</i>	99.83%
Unit 3	<i>Electrostatic Precipitator (ESP)</i>	99.86%
Unit 4	<i>Electrostatic Precipitator (ESP)</i>	99.77%
Unit 5	<i>Electrostatic Precipitator (ESP)</i>	99.76%
Unit 6	<i>Electrostatic Precipitator (ESP)</i>	99.76%

Note: ESP plant does not have bypass mode operation, hence plant 100% Utilised.

### 5. MONITOR RELIABILITY (%)

Associated Unit/Stack	PM	SO <sub>2</sub>	NO
Unit 1	94.7	99.9	99.9
Unit 2	95.7	99.7	99.9
Unit 3	97.1	99.8	99.8
Unit 4	98.9	100.0	100.0
Unit 5	98.9	99.7	99.7
Unit 6	97.6	99.4	99.4

Note: NOx emissions is measured as NO in PPM. Final NOx value is expressed as total NO<sub>2</sub>

## 6. EMISSION PERFORMANCE

Table 6.1: Monthly tonnages for the month of November 2022

Associated Unit/Stack	PM (tons)	SO <sub>2</sub> (tons)	NO <sub>x</sub> (tons)
Unit 1	237.3	3 248	1 850
Unit 2	141.6	3 097	1 332
Unit 3	95.8	2 424	1 144
Unit 4	92.9	1 494	747
Unit 5	218.2	3783	1429
Unit 6	207.7	3 319	1 395
<b>SUM</b>	<b>993.4</b>	<b>17 365</b>	<b>7 897</b>

Table 6.2: Operating days in compliance to PM AEL Limit - November 2022

Associated Unit/Stack	Normal	Grace	Section 30	Contra-vention	Total Exceedance	Average PM (mg/Nm <sup>3</sup> )
Unit 1	22	8	0	0	8	111.6
Unit 2	23	4	0	0	4	82.2
Unit 3	17	3	0	0	3	71.3
Unit 4	8	6	0	0	6	113.9
Unit 5	20	10	0	0	10	113.6
Unit 6	21	9	0	0	9	117.7
<b>SUM</b>	<b>111</b>	<b>40</b>	<b>0</b>	<b>0</b>	<b>40</b>	

Table 6.3: Operating days in compliance to SO<sub>2</sub> AEL Limit - November 2022

Associated Unit/Stack	Normal	Grace	Section 30	Contra-vention	Total Exceedance	Average SO <sub>2</sub> (mg/Nm <sup>3</sup> )
Unit 1	30	0	0	0	0	1 530.4
Unit 2	30	0	0	0	0	1 611.7
Unit 3	22	0	0	0	0	1 699.8
Unit 4	15	0	0	0	0	1 737.8
Unit 5	30	0	0	0	0	1 862.9
Unit 6	30	0	0	0	0	1 823.4
<b>SUM</b>	<b>157</b>	<b>0</b>	<b>0</b>	<b>0</b>	<b>0</b>	

Table 6.4: Operating days in compliance to NOx AEL Limit - November 2022

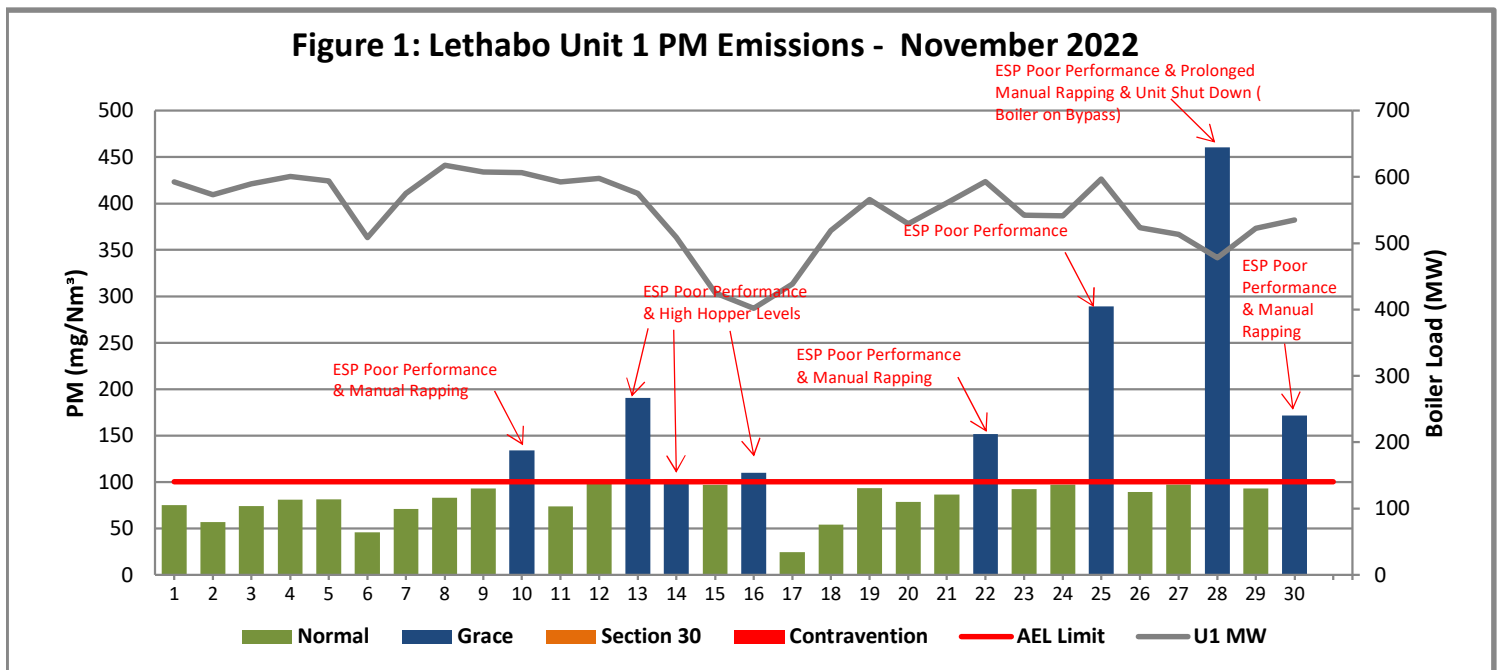
Associated Unit/Stack	Normal	Grace	Section 30	Contra-vention	Total Exceedance	Average NOx (mg/Nm³)
Unit 1	30	0	0	0	0	867.2
Unit 2	30	0	0	0	0	684.8
Unit 3	22	0	0	0	0	798.2
Unit 4	15	0	0	0	0	836.3
Unit 5	30	0	0	0	0	702.2
Unit 6	30	0	0	0	0	764.1
<b>SUM</b>	<b>157</b>	<b>0</b>	<b>0</b>	<b>0</b>	<b>0</b>	

Note: NOx emissions is measured as NO in PPM. Final NOx value is expressed as total NO<sub>2</sub>

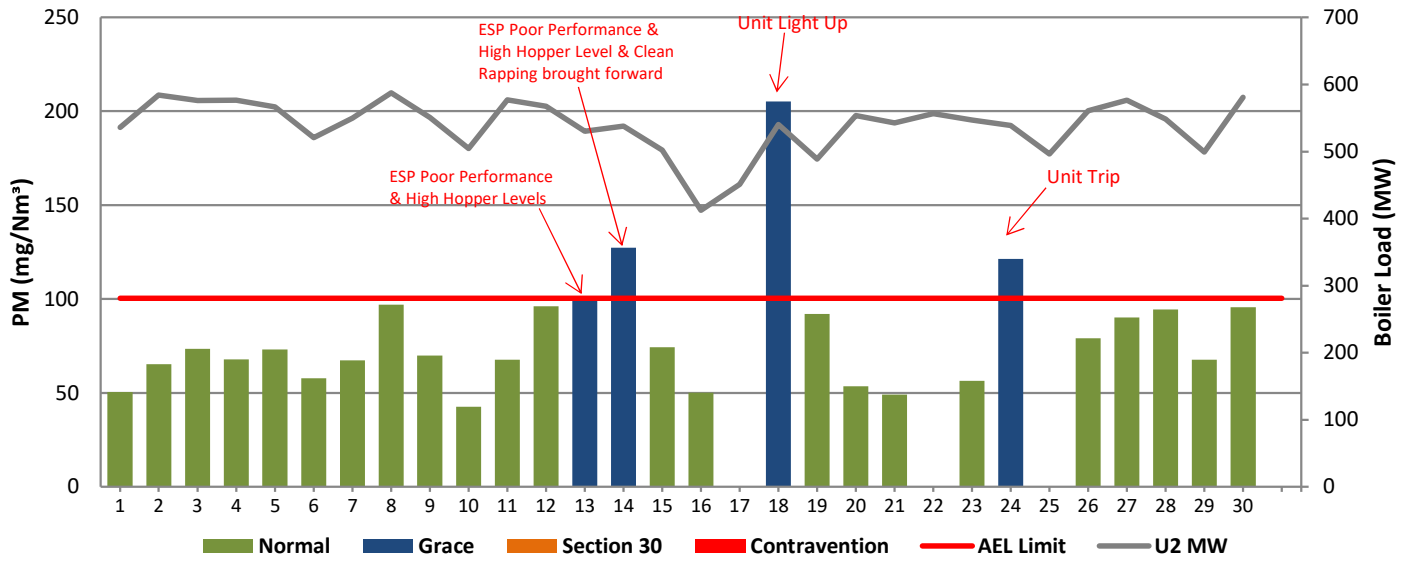
Table 6.5: Legend Description

Condition	Colour	Description
Normal	GREEN	Emissions below Emission Limit Value (ELV)
Grace	BLUE	Emissions above the ELV during grace period
Section 30	ORANGE	Emissions above ELV during a NEMA S30 incident
Contra-vention	RED	Emissions above ELV but outside grace or S30 incident conditions

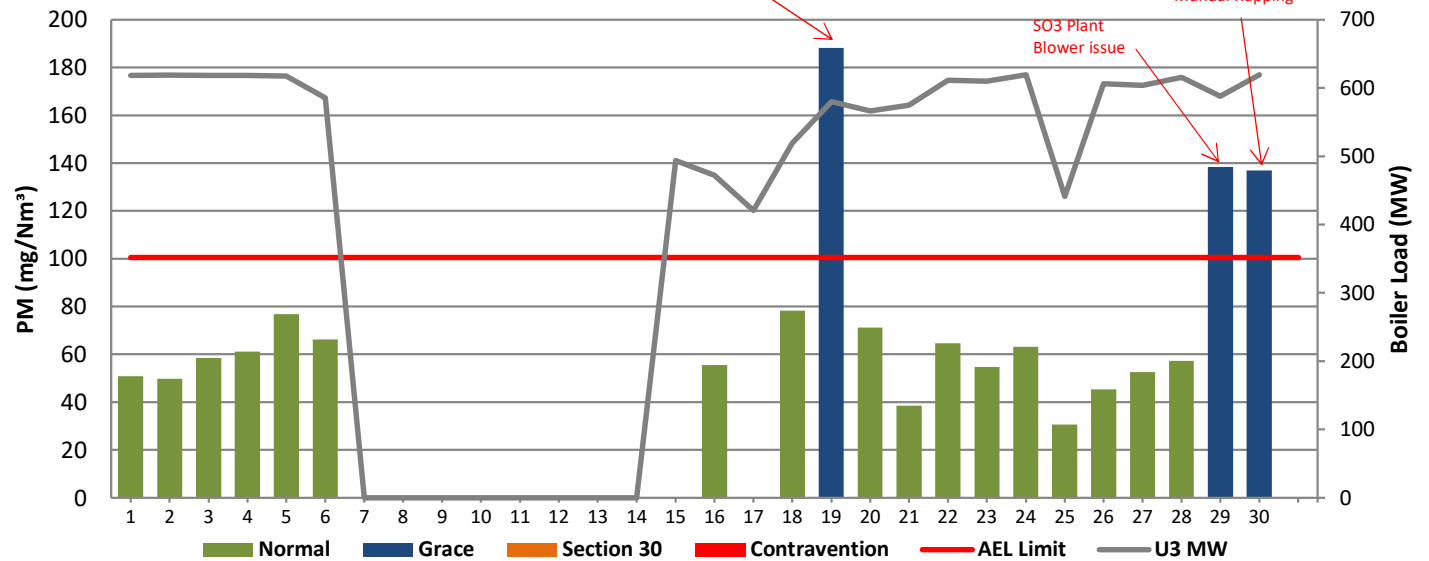
Figure 1: Lethabo Unit 1 PM Emissions - November 2022



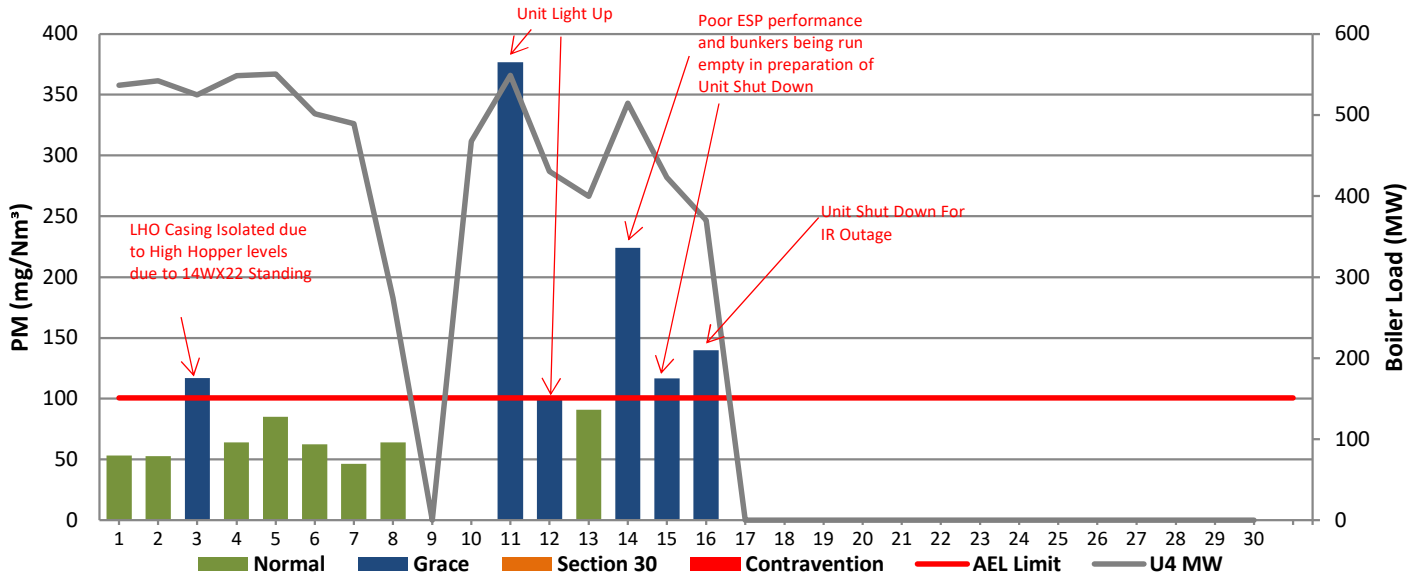
**Figure 2: Lethabo Unit 2 PM Emissions - November 2022**



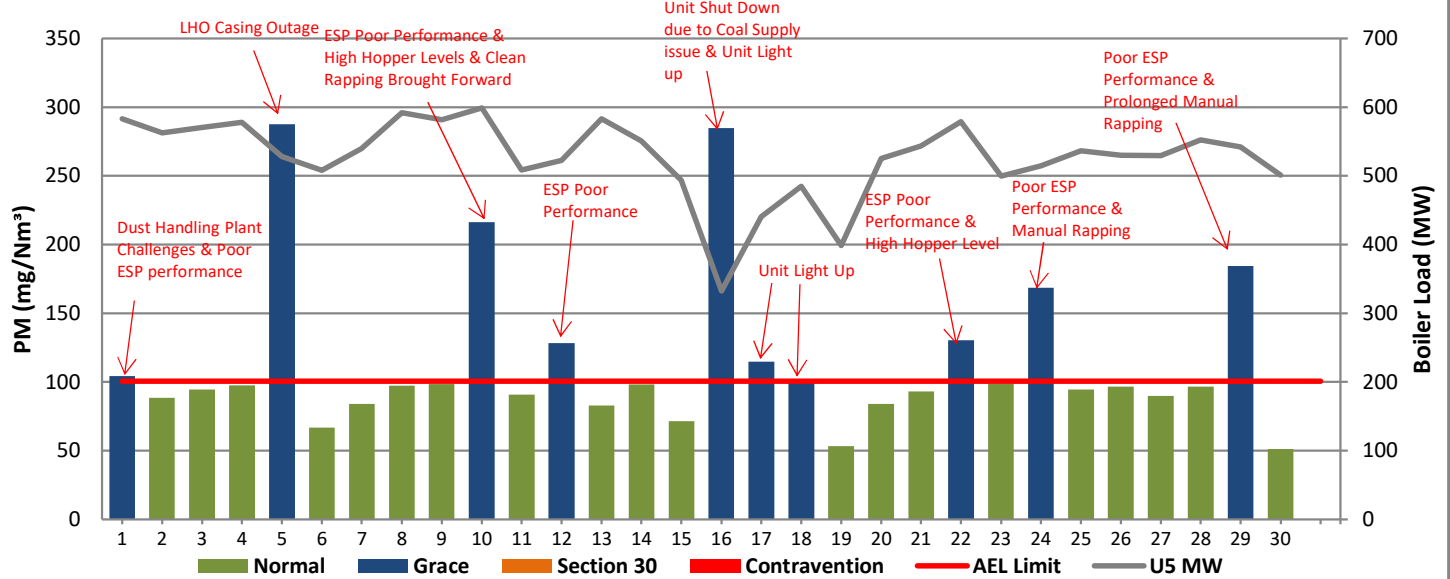
**Figure 3: Lethabo Unit 3 PM Emissions - November 2022**



**Figure 4: Lethabo Unit 4 PM Emissions - November 2022**

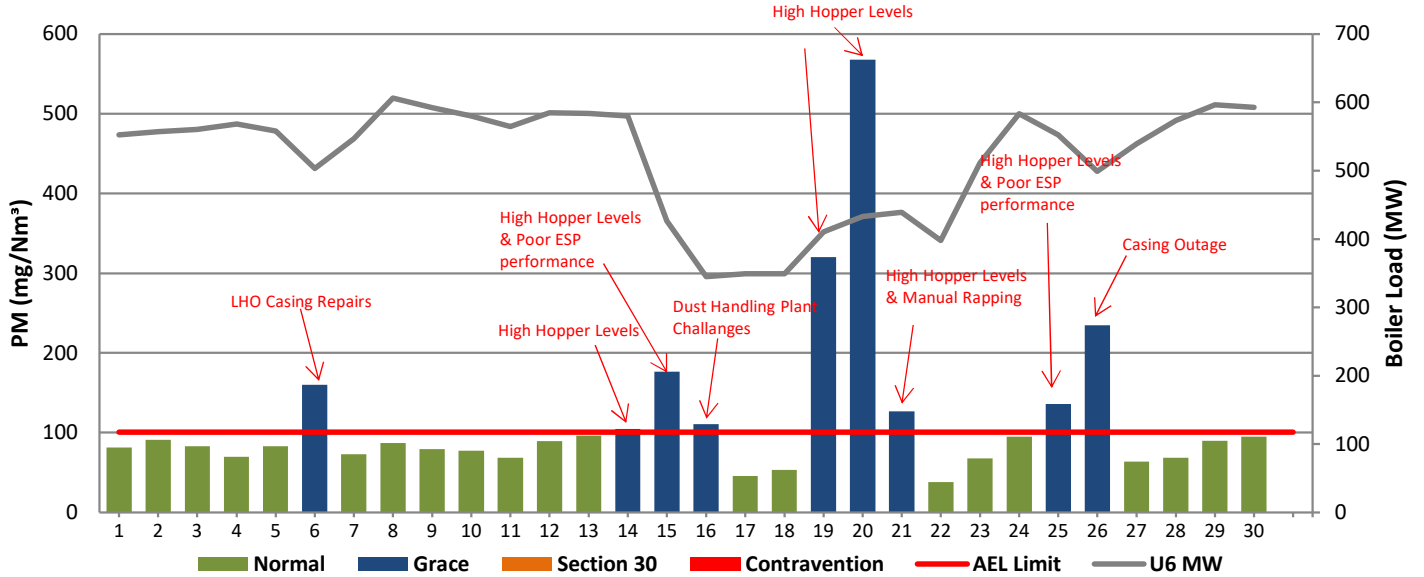


**Figure 5: Lethabo Unit 5 PM Emissions - November 2022**

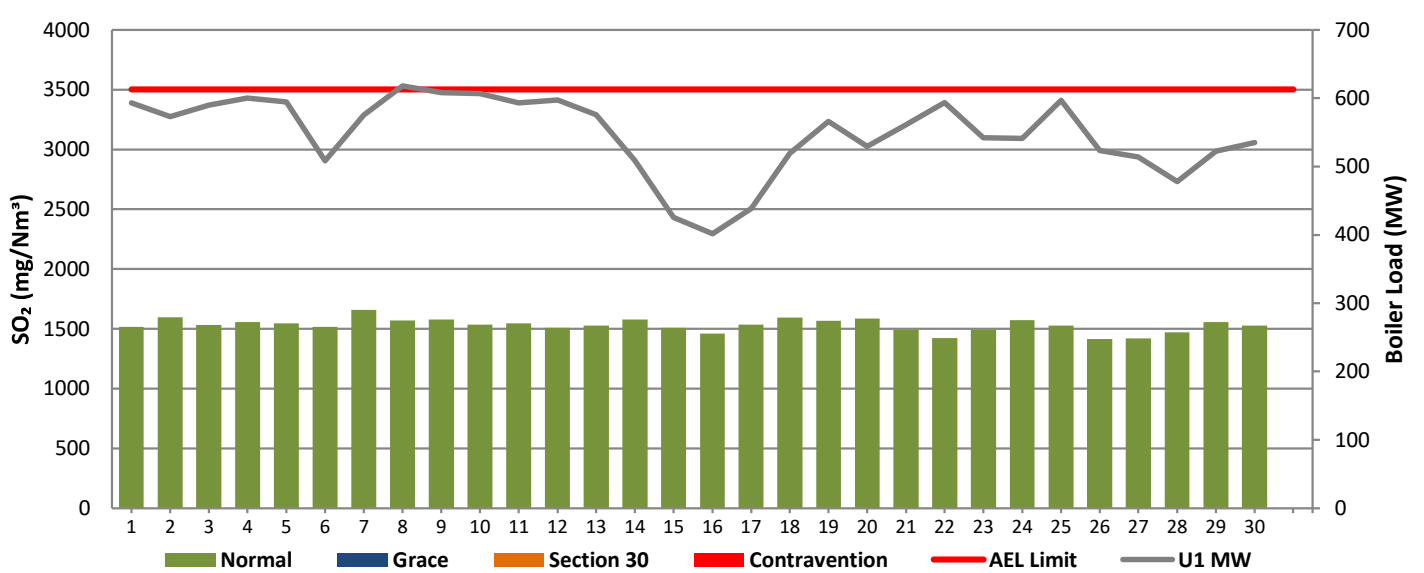




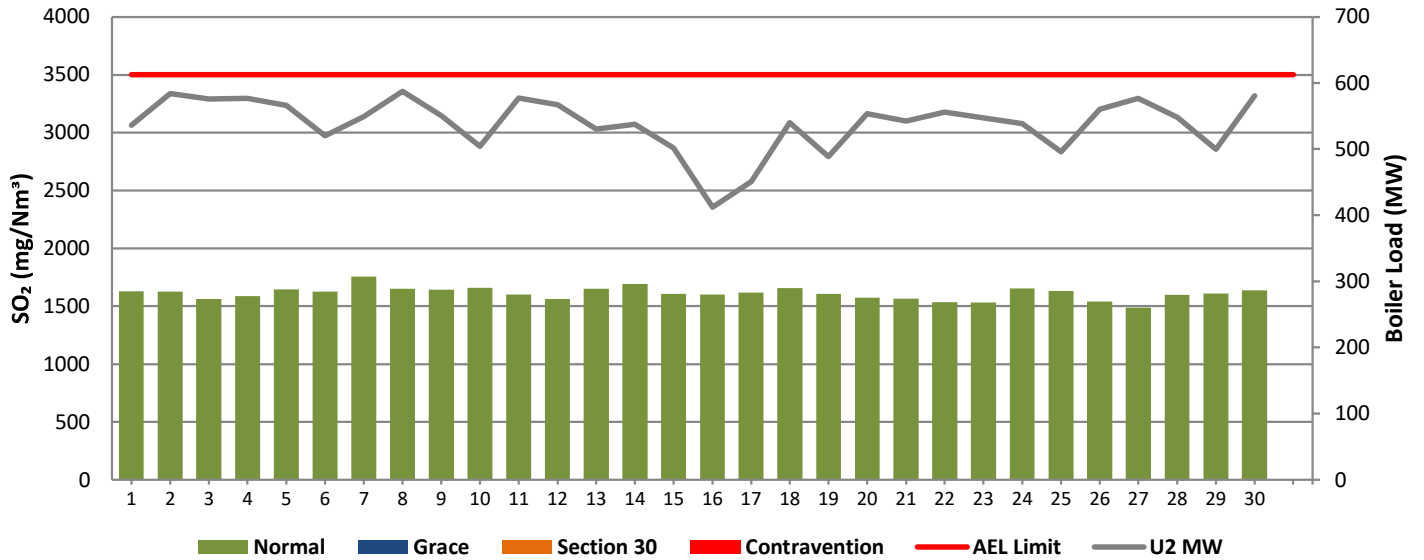
**Figure 6: Lethabo Unit 6 PM Emissions - November 2022**



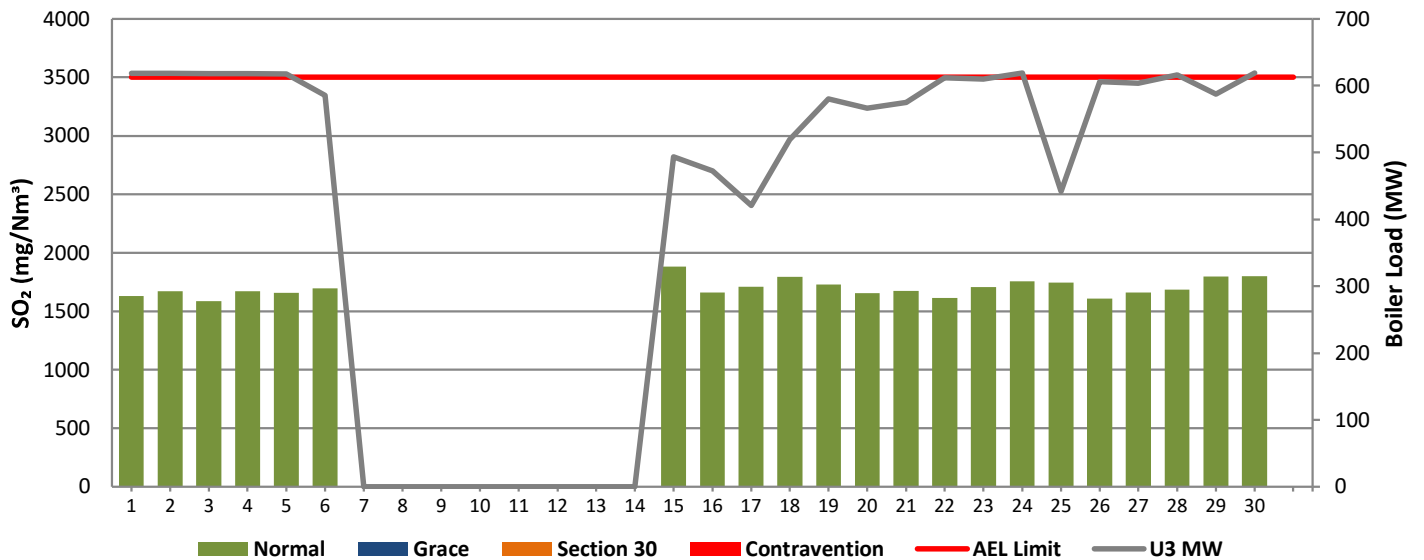
**Figure 7: Lethabo Unit 1 SO<sub>2</sub> Emissions - November 2022**



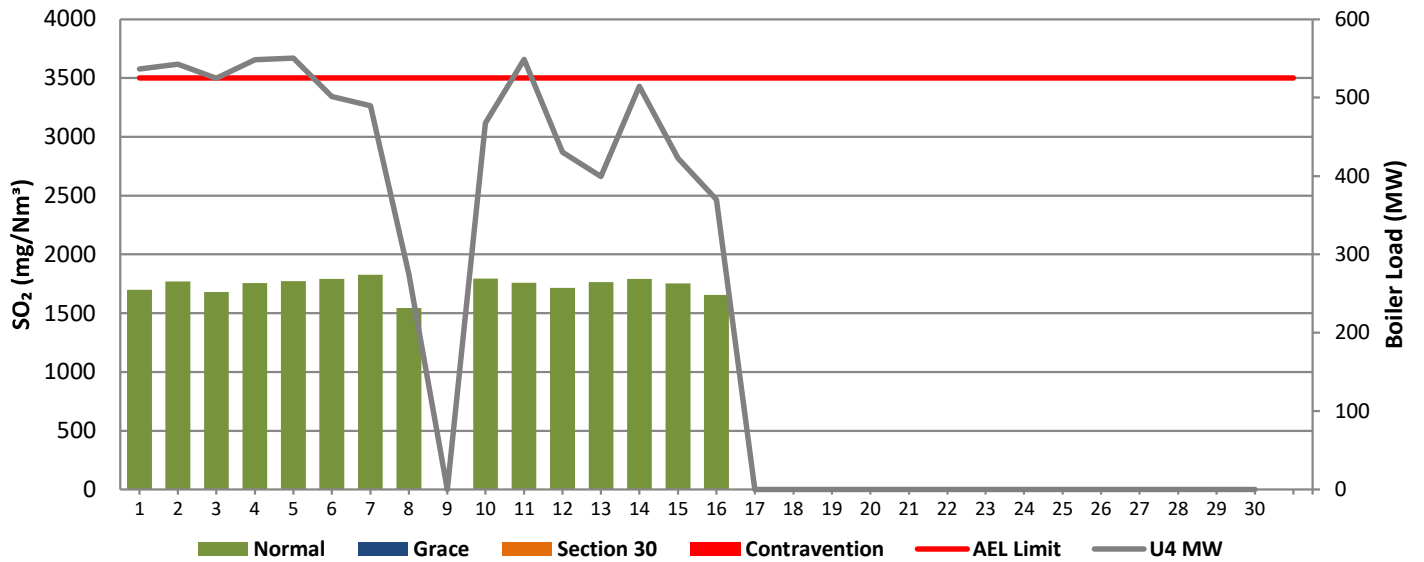
**Figure 8: Lethabo Unit 2 SO<sub>2</sub> Emissions - November 2022**



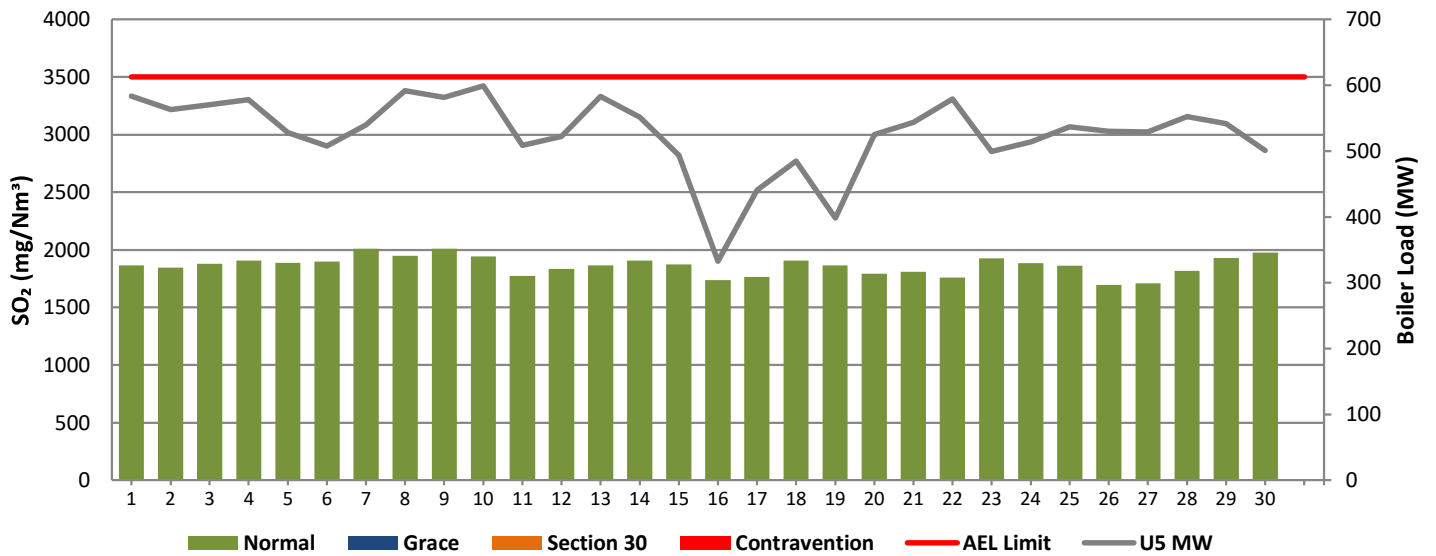
**Figure 9: Lethabo Unit 3 SO<sub>2</sub> Emissions - November 2022**



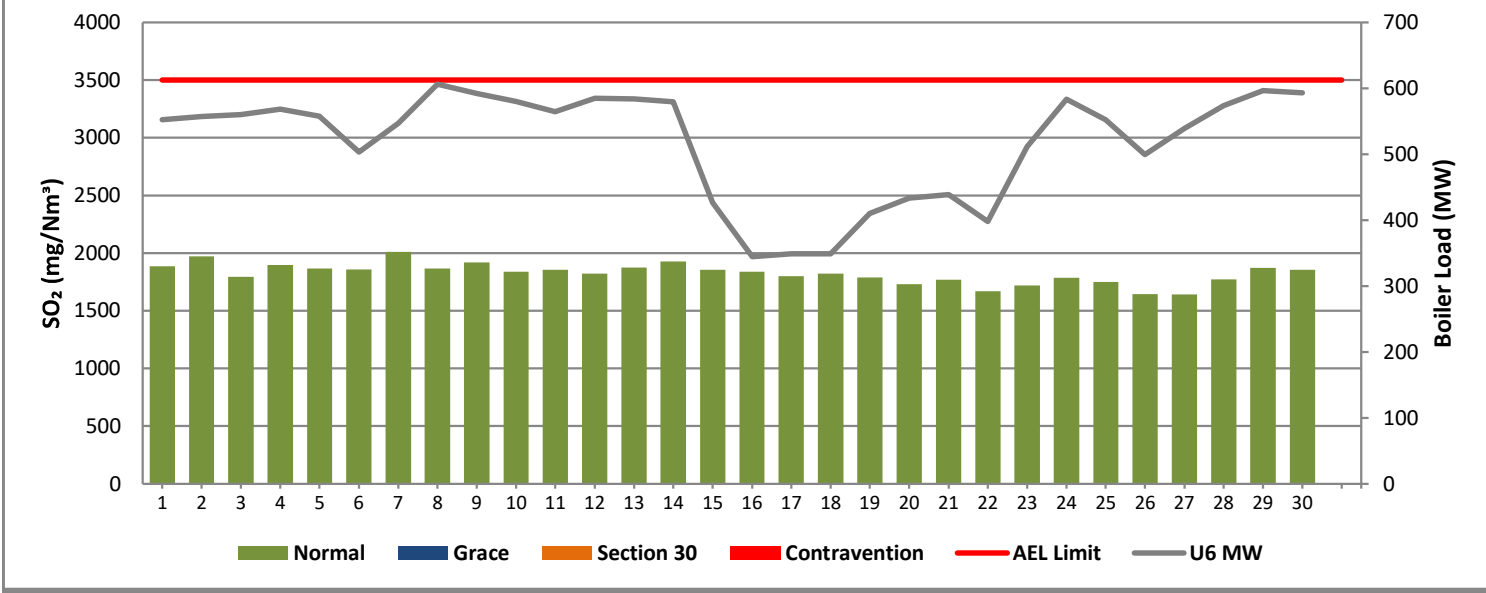
**Figure 10: Lethabo Unit 4 SO<sub>2</sub> Emissions - November 2022**



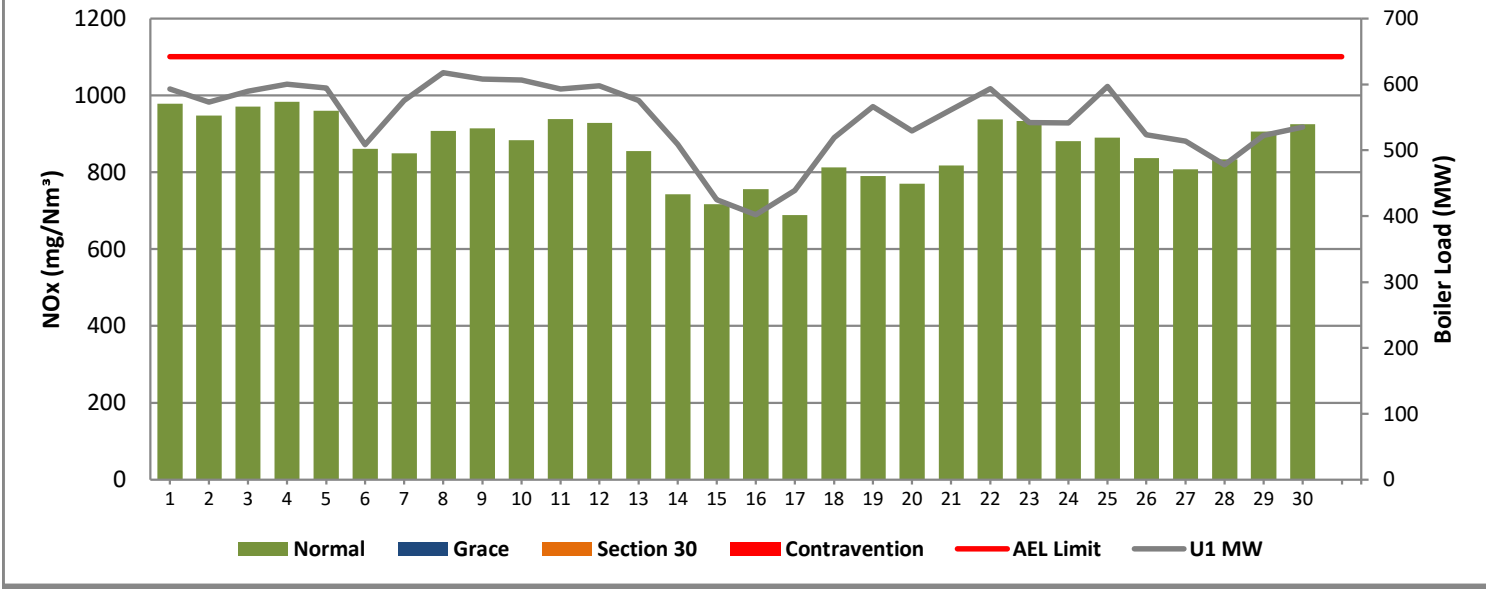
**Figure 11: Lethabo Unit 5 SO<sub>2</sub> Emissions - November 2022**



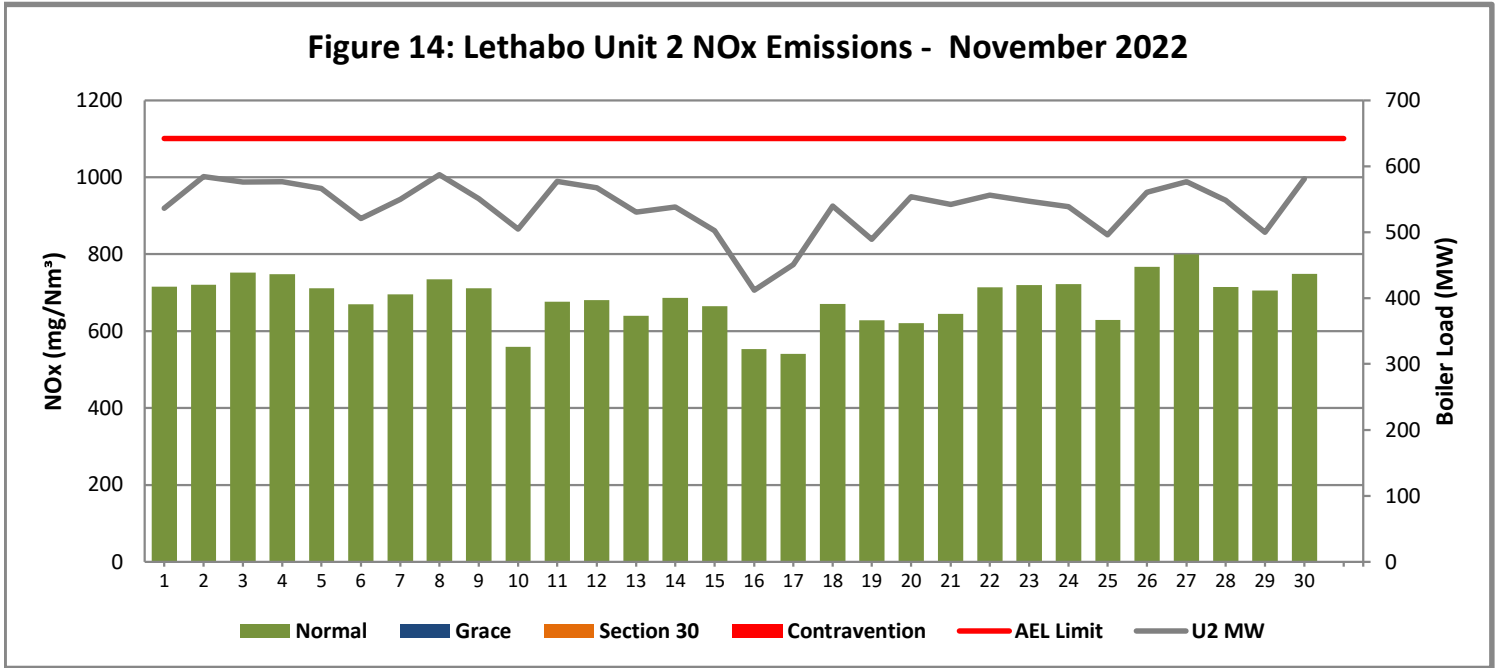
**Figure 12: Lethabo Unit 6 SO<sub>2</sub> Emissions - November 2022**



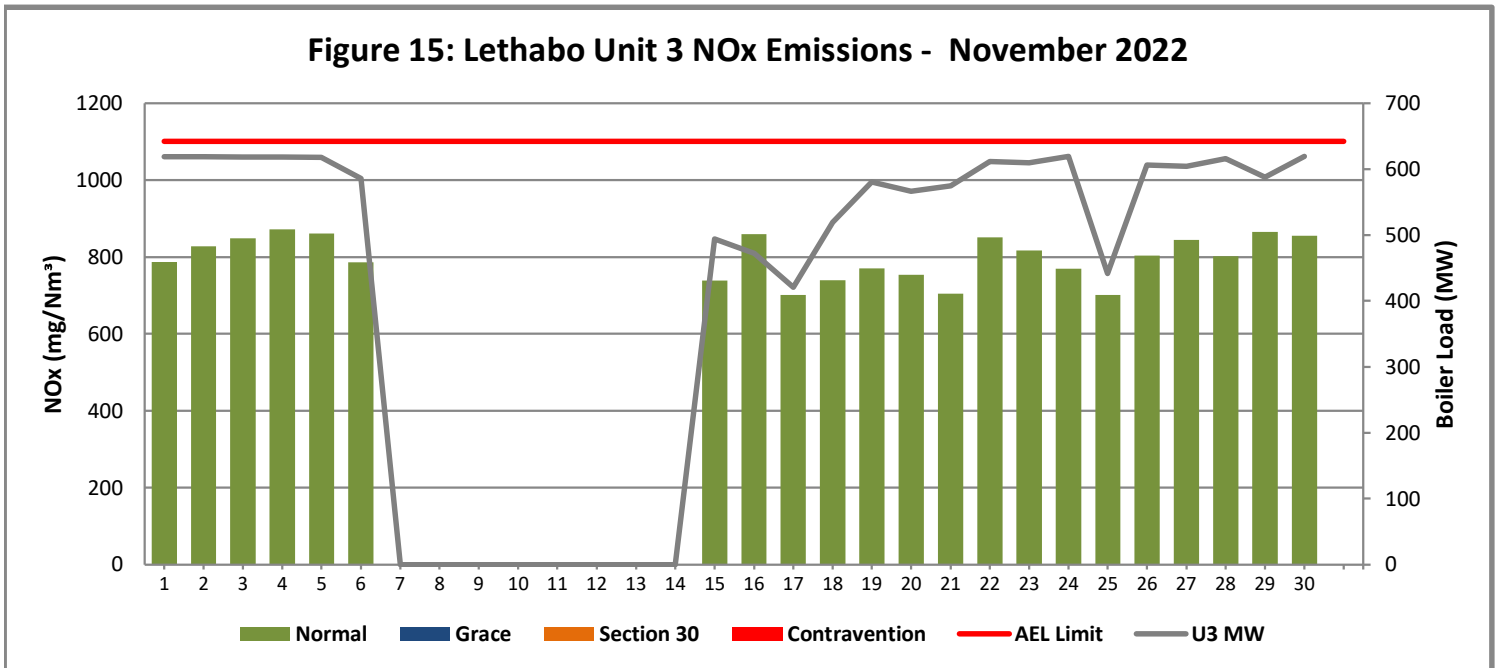
**Figure 13: Lethabo Unit 1 NO<sub>x</sub> Emissions - November 2022**



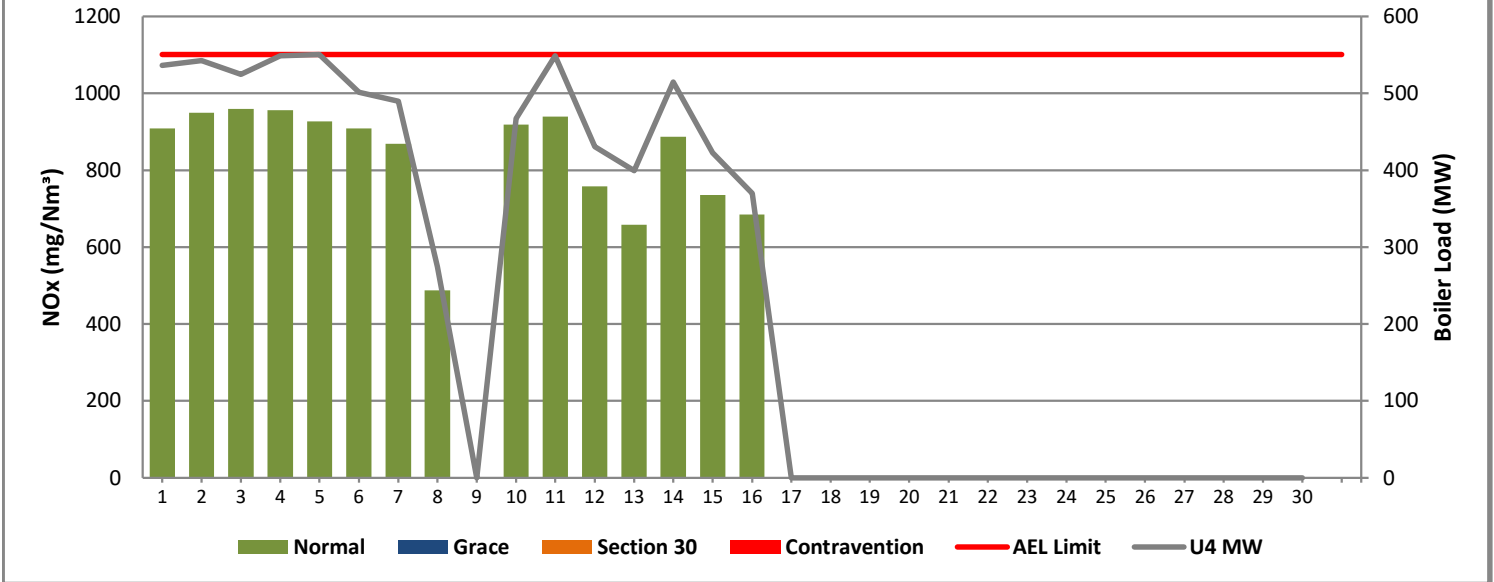
**Figure 14: Lethabo Unit 2 NOx Emissions - November 2022**



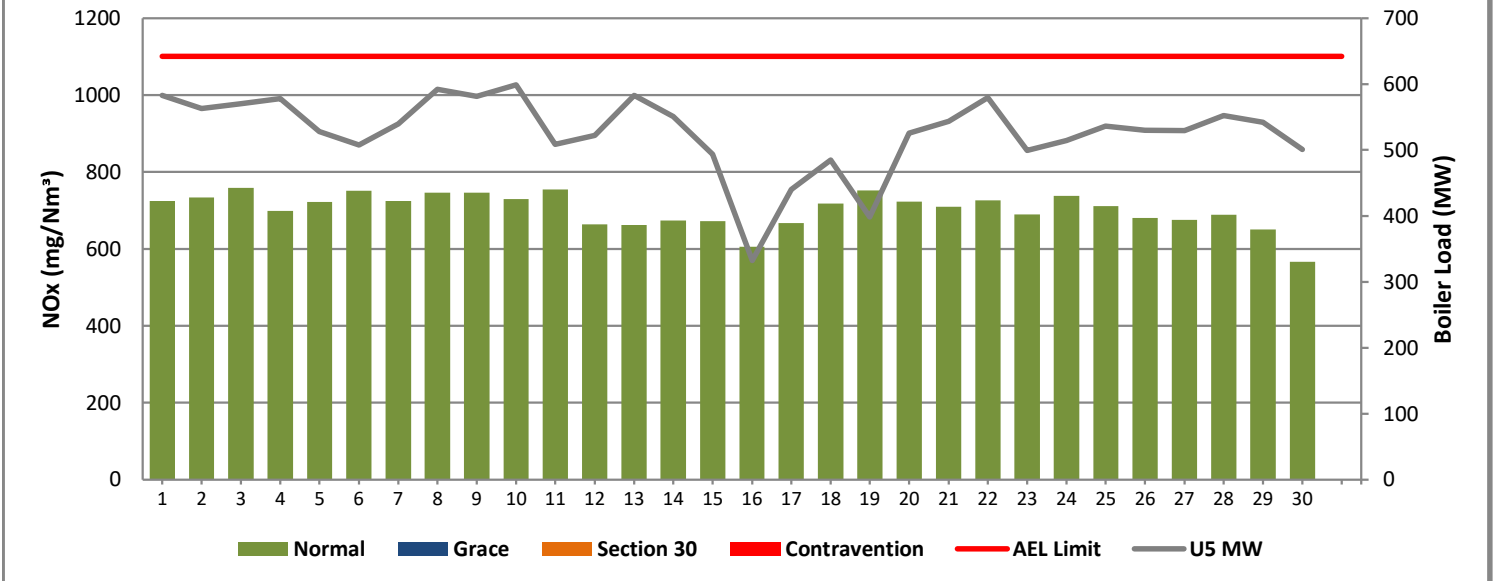
**Figure 15: Lethabo Unit 3 NOx Emissions - November 2022**



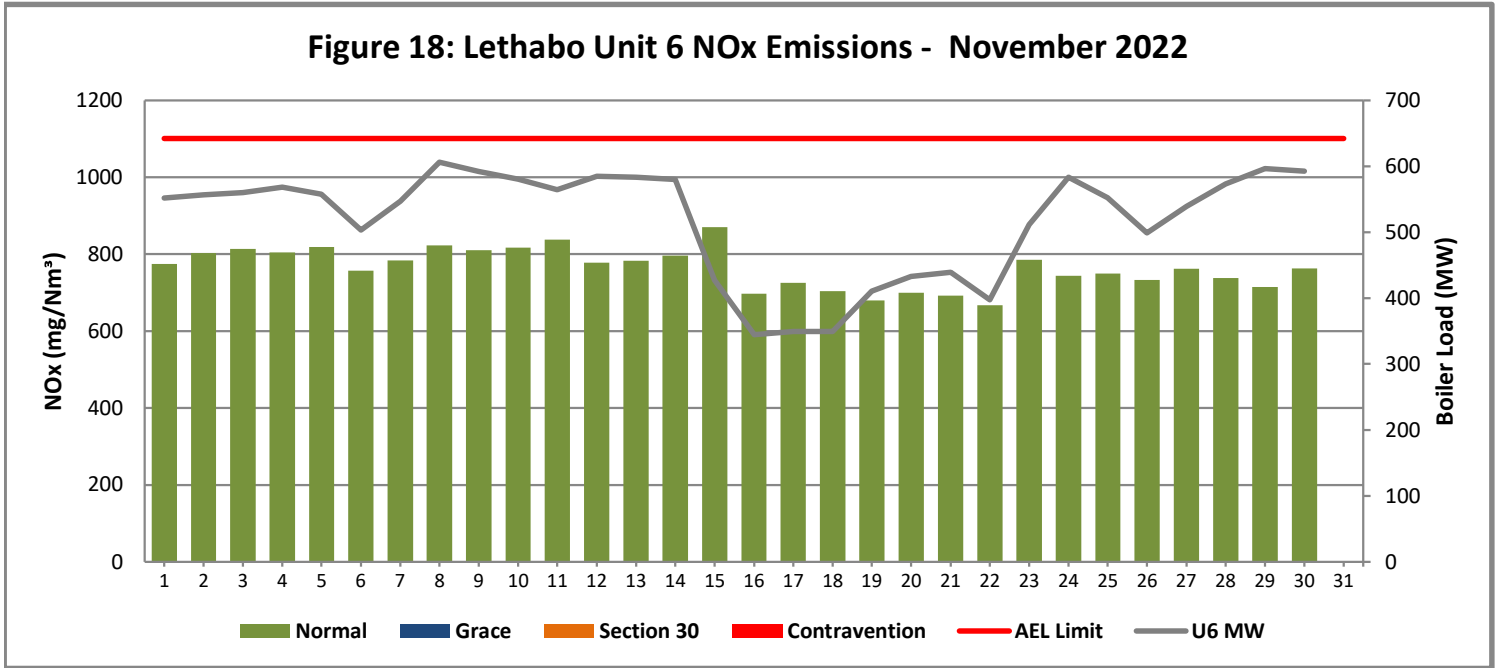
**Figure 16: Lethabo Unit 4 NOx Emissions - November 2022**



**Figure 17: Lethabo Unit 5 NOx Emissions - November 2022**



**Figure 18: Lethabo Unit 6 NOx Emissions - November 2022**



## 7 SHUT DOWN AND LIGHT UP INFORMATION

Table 7.1: PM Start-up information for the month of November 2022

Unit No.1	<i>Generator vibrations</i>						
Breaker Open (BO)	11:57 PM	2022/11/27					
Draught Group (DG) Shut Down (SD)	<i>DG did not trip or SD</i>	<i>DG did not trip or SD</i>					
BO to DG SD (duration)	<i>n/a</i>	DD:HH:MM		DD:HH:MM		DD:HH:MM	DD:HH:MM
Fires in time							
Synch. to Grid (or BC)							
Fires in to BC (duration)		DD:HH:MM		DD:HH:MM		DD:HH:MM	DD:HH:MM
Emissions below limit from BC (end date)							
Emissions below limit from BC (duration)		DD:HH:MM		DD:HH:MM		DD:HH:MM	DD:HH:MM

Unit No.2	<i>Unit tripped on black furnace &amp; Unit shutdown coal supply T1A and T1B out of service</i>		<i>Unit Trip on drum level</i>				
Breaker Open (BO)	6:41 AM	2022/11/16	9:57 PM	2022/11/24			
Draught Group (DG) Shut Down (SD)	8:16 AM	2022/11/16	11:02 PM	2022/11/24			
BO to DG SD (duration)	00:01:35	DD:HH:MM	00:01:05	DD:HH:MM		DD:HH:MM	DD:HH:MM
Fires in time	4:12 AM	2022/11/17	11:08 AM	2022/11/25			
Synch. to Grid (or BC)	5:31 AM	2022/11/17	11:41 AM	2022/11/25			
Fires in to BC (duration)	00:01:19	DD:HH:MM	00:00:33	DD:HH:MM		DD:HH:MM	DD:HH:MM
Emissions below limit from BC (end date)	10:00 PM	2022/11/19	6:00 AM	2022/11/27			
Emissions below limit from BC (duration)	02:16:29	DD:HH:MM	01:18:19	DD:HH:MM		DD:HH:MM	DD:HH:MM



<b>Unit No.3</b>	<i>Boiler tube leak.</i>		<i>Unit shutdown coal supply T1A out of service.</i>					
<b>Breaker Open (BO)</b>	9:13 PM	2022/11/06	8:47 AM	2022/11/16				
<b>Draught Group (DG) Shut Down (SD)</b>	9:47 AM	2022/11/07	11:00 AM	2022/11/16				
<b>BO to DG SD (duration)</b>	00:12:34	DD:HH:MM	00:02:13	DD:HH:MM		DD:HH:MM		DD:HH:MM
<b>Fires in time</b>	1:14 AM	2022/11/15	1:07 AM	2022/11/17				
<b>Synch. to Grid (or BC)</b>	2:51 AM	2022/11/15	2:21 AM	2022/11/17				
<b>Fires in to BC (duration)</b>	00:01:37	DD:HH:MM	00:01:14	DD:HH:MM		DD:HH:MM		DD:HH:MM
<b>Emissions below limit from BC (end date)</b>	5:00 PM	2022/11/19	5:00 PM	2022/11/19				
<b>Emissions below limit from BC (duration)</b>	04:14:09	DD:HH:MM	02:14:39	DD:HH:MM		DD:HH:MM		DD:HH:MM

<b>Unit No.4</b>	<i>Boiler tube leak repairs.</i>		<i>Unit shut down due to IR.</i>					
<b>Breaker Open (BO)</b>	1:02 AM	2022/11/08	8:44 AM	2022/11/16				
<b>Draught Group (DG) Shut Down (SD)</b>	1:24 PM	2022/11/08	DG did not trip or SD	DG did not trip or SD				
<b>BO to DG SD (duration)</b>	00:12:22	DD:HH:MM	n/a	DD:HH:MM		DD:HH:MM		DD:HH:MM
<b>Fires in time</b>	11:38 PM	2022/11/09						
<b>Synch. to Grid (or BC)</b>	12:06 AM	2022/11/10						
<b>Fires in to BC (duration)</b>	00:00:28	DD:HH:MM		DD:HH:MM		DD:HH:MM		DD:HH:MM
<b>Emissions below limit from BC (end date)</b>	4:00 AM	2022/11/13						
<b>Emissions below limit from BC (duration)</b>	03:03:54	DD:HH:MM		DD:HH:MM		DD:HH:MM		DD:HH:MM

<b>Unit No.5</b>	<i>unavailability of unavailability of coal</i>						
<b>Breaker Open (BO)</b>	7:49 AM	2022/11/16					
<b>Draught Group (DG) Shut Down (SD)</b>	8:59 AM	2022/11/16					
<b>BO to DG SD (duration)</b>	00:01:10	DD:HH:MM		DD:HH:MM		DD:HH:MM	DD:HH:MM
<b>Fires in time</b>	7:19 PM	2022/11/16					
<b>Synch. to Grid (or BC)</b>	7:39 PM	2022/11/16					
<b>Fires in to BC (duration)</b>	00:00:20	DD:HH:MM		DD:HH:MM		DD:HH:MM	DD:HH:MM
<b>Emissions below limit from BC (end date)</b>	2:00 AM	2022/11/19					
<b>Emissions below limit from BC (duration)</b>	02:06:21	DD:HH:MM		DD:HH:MM		DD:HH:MM	DD:HH:MM

<b>Unit No.6</b>	<i>Main turbine physical over speed test</i>						
<b>Breaker Open (BO)</b>	9:41 PM	2022/11/20					
<b>Draught Group (DG) Shut Down (SD)</b>	<i>DG did not trip or SD</i>	<i>DG did not trip or SD</i>					
<b>BO to DG SD (duration)</b>	<i>n/a</i>	DD:HH:MM		DD:HH:MM		DD:HH:MM	DD:HH:MM
<b>Fires in time</b>							
<b>Synch. to Grid (or BC)</b>							
<b>Fires in to BC (duration)</b>		DD:HH:MM		DD:HH:MM		DD:HH:MM	DD:HH:MM
<b>Emissions below limit from BC (end date)</b>							
<b>Emissions below limit from BC (duration)</b>		DD:HH:MM		DD:HH:MM		DD:HH:MM	DD:HH:MM

7.2: Point Source emissions released during start-up (fires-in) and Shut-down (SD) for the month of November 2022 in mg/Nm<sup>3</sup>

## 8. MAINTENANCE

<b>Unit 1</b>				
<b>Beginning of</b>	2022/11/16 00:00			
<b>Reason for Maintenance</b>	LHO Precip Casing			
<b>End (Time):</b>	2022/11/16 20:35			
<b>Duration</b>	20:35:00	0:00:00	0:00:00	0:00:00

<b>Unit 2</b>				
<b>Beginning of</b>				
<b>Reason for Maintenance</b>				
<b>End (Time):</b>				
<b>Duration</b>	0:00:00	0:00:00	0:00:00	0:00:00

<b>Unit 3</b>				
<b>Beginning of</b>				
<b>Reason for Maintenance</b>				
<b>End (Time):</b>				
<b>Duration</b>	0:00:00	0:00:00	0:00:00	0:00:00

<b>Unit 4</b>				
<b>Beginning of</b>				
<b>Reason for Maintenance</b>				
<b>End (Time):</b>				
<b>Duration</b>	0:00:00	0:00:00	0:00:00	0:00:00

<b>Unit 4</b>				
<b>Beginning of</b>				
<b>Reason for Maintenance</b>				
<b>End (Time):</b>				
<b>Duration</b>	0:00:00	0:00:00	0:00:00	0:00:00

<b>Unit 5</b>				
<b>Beginning of</b>	2022/11/05 00:00	2022/11/11 23:59		
<b>Reason for Maintenance</b>	LHI Precip Casing	RHO Precip Casing		
<b>End (Time):</b>	2022/11/05 16:13	2022/11/12 16:34		
<b>Duration</b>	16:13:00	16:35:00	0:00:00	0:00:00

<b>Unit 6</b>				
<b>Beginning of</b>	2022/11/06 00:03:00	2022/11/06 16:16	2022/11/26 00:00	
<b>Reason for Maintenance</b>	LHO Precip Casing	LHO Precip Casing	LHI Precip Casing	
<b>End (Time):</b>	2022/11/06 16:16:00	2022/11/06 17:24	2022/11/27 00:00	
<b>Duration</b>	16:13:00	1:08:00	24:00:00	0:00:00

## 9. GENERAL

### Unit 1 Monitor Reliability

19/11/2022: Monitor Reliability low (41.7%) due to Unit 2 loop supply tripped on overcurrent protection and tripped the station board 2. This tripped out the monitors

25/11/2022: Monitor Reliability Low (75.0%) due to there being a greater than 10% variability between output 1 and 2.

28/11/2022: Monitor Reliability low (75.0%) Due to monitors reading maximum

### Unit 2 Monitor Reliability

19/11/2022: Monitor Reliability low (41.7%) due to Unit 2 loop supply tripped on overcurrent protection and tripped the station board 2. This tripped out the monitors

### Unit 3 Monitor Reliability

19/11/2022: Monitor Reliability low (45.8%) due to Unit 2 loop supply tripped on overcurrent protection and tripped the station board 2. This tripped out the monitors

### Unit 6 Monitor Reliability

19/11/2022: Monitor Reliability low (79.2%) due to Unit 2 loop supply tripped on overcurrent protection and tripped the station board 2. This tripped out the monitors

20/11/2022: Monitor Reliability low (75.0%) Due to monitors reading maximum

### CO2 and Velocity Monitors Low Reliability Units 1-6:

Due to correction of bad data as per internal emission data integrity review actions in 2021 and 2022. Bad Velocity data and Bad CO2 data were corrected/removed as per the review actions and findings.

**ADDENDUM TO MONTHLY EMISSIONS REPORT**

**10. S30 INCIDENT OR LEGAL CONTRAVENTION REGISTER**

To be completed in the case of a S30 incident or a legal contravention:

Unit no	Incident Start Date	Incident End Date	Incident Cause	Remedial action	S30 initial notification sent	Date S30 investigation report sent	Date DEA Acknowledgment	Date DEA Acceptable	Comments / Reference No.

**11. PARTICULATE EMISSIONS**

**EMISSION RATE (ACTUAL EMISSION/MWh GENERATED - kg/MWh)**

MONTH	UNIT 1	UNIT 2	UNIT 3	UNIT 4	UNIT 5	UNIT 6	STATION
Dec-21	0.39	OFF	0.55	0.57	0.34	0.29	0.42
Jan-22	0.37	OFF	0.52	0.46	0.47	0.36	0.44
Feb-22	0.47	1.06	0.62	0.44	0.38	0.59	0.56
Mar-22	0.73	0.90	0.66	0.58	0.33	0.43	0.57
Apr-22	0.60	0.61	0.53	0.45	OFF	0.37	0.51
May-22	0.55	0.59	0.33	0.19	OFF	0.44	0.45
Jun-22	0.55	0.63	0.37	0.77	OFF	0.48	0.56
Jul-22	0.38	0.44	0.42	0.58	0.11	0.37	0.43
Aug-22	0.29	0.46	0.50	0.71	0.27	0.32	0.43
Sep-22	0.40	0.24	0.31	0.79	0.32	0.40	0.41
Oct-22	0.52	0.39	0.44	0.40	0.45	0.44	0.44
Nov-22	0.60	0.38	0.33	0.58	0.58	0.56	0.51

**ADDENDUM TO MONTHLY EMISSIONS REPORT**

**12. DAILY EMISSIONS FIGURES**

**Final Dust Concentration (mg/Nm<sup>3</sup>)**

Date	U1	U2	U3	U4	U5	U6	Limit
31-Oct	88	59	69	57	100	83	100
01-Nov	75	51	51	53	104	82	100
02-Nov	57	65	50	53	89	91	100
03-Nov	74	73	58	117	95	83	100
04-Nov	81	68	61	64	98	70	100
05-Nov	81	73	77	85	287	83	100
06-Nov	46	58	66	62	67	160	100
07-Nov	71	67	OFF	46	84	73	100
08-Nov	83	97	OFF	64	97	87	100
09-Nov	93	70	OFF	OFF	98	80	100
10-Nov	134	43	OFF	OFF	216	77	100
11-Nov	74	68	OFF	377	91	69	100
12-Nov	100	96	OFF	102	128	89	100
13-Nov	191	101	OFF	91	83	96	100
14-Nov	103	127	OFF	224	98	104	100
15-Nov	97	74	OFF	117	72	176	100
16-Nov	110	50	42	140	229	111	100
17-Nov	25	OFF	OFF	OFF	131	45	100
18-Nov	54	233	79	OFF	101	53	100
19-Nov	93	92	188	OFF	53	320	100
20-Nov	79	54	71	OFF	84	568	100
21-Nov	86	49	39	OFF	93	126	100
22-Nov	152	OFF	65	OFF	130	38	100
23-Nov	92	51	55	OFF	99	68	100
24-Nov	97	121	63	OFF	169	95	100
25-Nov	289	OFF	31	OFF	95	136	100
26-Nov	89	90	45	OFF	97	234	100
27-Nov	97	90	53	OFF	90	64	100
28-Nov	460	94	57	OFF	97	69	100
29-Nov	93	68	138	OFF	185	90	100
30-Nov	172	96	137	OFF	51	95	100

**ADDENDUM TO MONTHLY EMISSIONS REPORT**

**Final SOx Concentration (mg/Nm<sup>3</sup>)**

Date	U1	U2	U3	U4	U5	U6	Limit
31-Oct	1632	1597	1655	1751	1920	1881	3500
01-Nov	1517	1629	1631	1697	1865	1887	3500
02-Nov	1597	1626	1671	1769	1846	1972	3500
03-Nov	1532	1563	1586	1680	1878	1796	3500
04-Nov	1556	1588	1673	1756	1906	1898	3500
05-Nov	1546	1647	1658	1771	1887	1869	3500
06-Nov	1517	1628	1696	1792	1897	1856	3500
07-Nov	1656	1755	OFF	1827	2011	2011	3500
08-Nov	1570	1651	OFF	1544	1948	1866	3500
09-Nov	1576	1644	OFF	OFF	2011	1919	3500
10-Nov	1536	1658	OFF	1794	1942	1837	3500
11-Nov	1544	1601	OFF	1759	1774	1853	3500
12-Nov	1508	1563	OFF	1715	1835	1822	3500
13-Nov	1527	1651	OFF	1765	1865	1875	3500
14-Nov	1578	1692	OFF	1792	1909	1927	3500
15-Nov	1509	1607	1881	1752	1872	1854	3500
16-Nov	1459	1600	1662	1654	1739	1838	3500
17-Nov	1535	1618	1711	OFF	1766	1799	3500
18-Nov	1594	1658	1795	OFF	1908	1822	3500
19-Nov	1565	1608	1729	OFF	1865	1789	3500
20-Nov	1587	1574	1654	OFF	1793	1731	3500
21-Nov	1493	1565	1674	OFF	1809	1770	3500
22-Nov	1424	1535	1614	OFF	1760	1668	3500
23-Nov	1494	1534	1706	OFF	1928	1718	3500
24-Nov	1572	1653	1757	OFF	1884	1787	3500
25-Nov	1528	1632	1743	OFF	1863	1749	3500
26-Nov	1417	1540	1609	OFF	1696	1643	3500
27-Nov	1420	1487	1662	OFF	1709	1642	3500
28-Nov	1470	1598	1685	OFF	1817	1774	3500
29-Nov	1556	1610	1797	OFF	1929	1874	3500
30-Nov	1528	1636	1800	OFF	1976	1854	3500

**ADDENDUM TO MONTHLY EMISSIONS REPORT**

**Final NOx Concentration (mg/Nm<sup>3</sup>)**

Date	U1	U2	U3	U4	U5	U6	Limit
31-Oct	937	687	794	744	675	779	1100
01-Nov	979	716	787	909	725	774	1100
02-Nov	948	720	828	949	734	803	1100
03-Nov	970	752	849	959	759	814	1100
04-Nov	983	748	871	956	700	805	1100
05-Nov	960	712	861	927	722	819	1100
06-Nov	860	670	786	908	751	757	1100
07-Nov	849	695	OFF	868	724	783	1100
08-Nov	907	734	OFF	488	746	823	1100
09-Nov	914	711	OFF	OFF	746	810	1100
10-Nov	883	559	OFF	919	730	817	1100
11-Nov	938	676	OFF	939	755	837	1100
12-Nov	928	680	OFF	758	664	778	1100
13-Nov	855	640	OFF	658	662	783	1100
14-Nov	742	687	OFF	887	674	796	1100
15-Nov	717	665	738	735	672	870	1100
16-Nov	756	553	860	685	606	697	1100
17-Nov	689	540	701	OFF	667	725	1100
18-Nov	812	671	739	OFF	718	704	1100
19-Nov	790	628	771	OFF	751	680	1100
20-Nov	770	620	754	OFF	722	699	1100
21-Nov	817	645	704	OFF	710	693	1100
22-Nov	937	714	852	OFF	727	667	1100
23-Nov	933	720	816	OFF	689	785	1100
24-Nov	880	722	770	OFF	738	744	1100
25-Nov	890	630	702	OFF	712	749	1100
26-Nov	836	767	804	OFF	681	733	1100
27-Nov	807	800	844	OFF	676	762	1100
28-Nov	833	715	802	OFF	688	738	1100
29-Nov	905	706	865	OFF	651	715	1100
30-Nov	925	749	856	OFF	567	763	1100



**ADDENDUM TO MONTHLY EMISSIONS REPORT**

**13. AVAILABILITY**

ESP utilisation

Availability												
Month	Unit 1	Days Affected	Unit 2	Days Affected	Unit 3	Days Affected	Unit 4	Days Affected	Unit 5	Days Affected	Unit 6	Days Affected
Dec-21	99.44%	0.7	OFF	OFF	98.24%	2.2	98.02%	2.5	100.00%	0.0	100.00%	0.0
Jan-22	98.50%	1.9	OFF	OFF	99.32%	0.8	100.00%	0.0	100.00%	0.0	100.00%	0.0
Feb-22	100.00%	0.0	100.00%	0.0	100.00%	0.0	100.00%	0.0	100.00%	0.0	98.54%	1.6
Mar-22	98.73%	1.6	98.70%	1.6	100.00%	0.0	100.00%	0.0	100.00%	0.0	100.00%	0.0
Apr-22	100.00%	0.0	98.63%	1.6	100.00%	0.0	98.46%	1.9	OFF	OFF	100.00%	0.0
May-22	98.73%	1.6	98.13%	2.3	100.00%	0.0	100.00%	0.0	OFF	OFF	100.00%	0.0
Jun-22	98.33%	2.0	99.05%	1.1	100.00%	0.0	100.00%	0.0	OFF	OFF	97.53%	3.0
Jul-22	99.37%	0.8	98.80%	1.5	100.00%	0.0	97.23%	3.4	100.00%	0.0	100.00%	0.0
Aug-22	99.42%	0.7	98.67%	1.6	100.00%	0.0	99.32%	0.8	100.00%	0.0	100.00%	0.0
Sep-22	98.86%	1.4	100.00%	0.0	100.00%	0.0	99.27%	0.9	98.44%	1.9	99.20%	1.0
Oct-22	98.80%	1.5	98.86%	1.4	100.00%	0.0	100.00%	0.0	99.24%	0.9	100.00%	0.0
Nov-22	99.29%	0.9	100.00%	0.0	100.00%	0.0	100.00%	0.0	98.86%	1.4	98.56%	1.7

SO<sub>3</sub> plant utilisation

Availability												
Month	Unit 1	Days Affected	Unit 2	Days Affected	Unit 3	Days Affected	Unit 4	Days Affected	Unit 5	Days Affected	Unit 6	Days Affected
Dec-21	97.72%	0.7	OFF	OFF	96.64%	1.0	97.18%	0.9	99.87%	0.0	100.00%	0.0
Jan-22	95.79%	1.3	OFF	OFF	83.10%	5.2	100.00%	0.0	100.00%	0.0	100.00%	0.0
Feb-22	99.40%	0.2	85.42%	4.1	97.47%	0.7	100.00%	0.0	100.00%	0.0	97.17%	0.8
Mar-22	87.77%	3.8	100.00%	0.0	100.00%	0.0	87.23%	4.0	100.00%	0.0	100.00%	0.0
Apr-22	99.72%	0.1	100.00%	0.0	95.69%	1.3	98.33%	0.5	OFF	OFF	100.00%	0.0
May-22	98.66%	0.4	100.00%	0.0	97.45%	0.8	98.92%	0.3	OFF	OFF	96.51%	1.1
Jun-22	97.78%	0.7	96.25%	1.1	98.19%	0.5	46.67%	16.0	OFF	OFF	98.06%	0.6
Jul-22	100.00%	0.0	100.00%	0.0	100.00%	0.0	100.00%	0.0	86.67%	4.0	98.61%	0.4
Aug-22	98.52%	0.5	100.00%	0.0	96.51%	1.1	65.19%	10.8	99.33%	0.2	100.00%	0.0
Sep-22	100.00%	0.0	99.58%	0.1	100.00%	0.0	94.27%	1.7	97.92%	0.6	100.00%	0.0
Oct-22	89.39%	3.3	100.00%	0.0	82.41%	5.5	99.73%	0.1	79.69%	6.3	100.00%	0.0
Nov-22	100.00%	0.0	100.00%	0.0	97.21%	0.8	88.86%	3.3	100.00%	0.0	100.00%	0.0

**ADDENDUM TO MONTHLY EMISSIONS REPORT**

Particulate Emission Monitors

Availability						
	Unit 1	Unit 2	Unit 3	Unit 4	Unit 5	Unit 6
Dec-21	98.39%	OFF	96.12%	96.81%	99.87%	100.00%
Jan-22	98.66%	OFF	99.19%	99.87%	99.70%	100.00%
Feb-22	98.28%	95.56%	99.67%	100.00%	99.85%	99.40%
Mar-22	94.33%	95.83%	95.56%	99.67%	98.38%	98.79%
Apr-22	96.20%	94.58%	98.99%	99.57%	OFF	100.00%
May-22	97.32%	99.06%	99.65%	99.72%	OFF	100.00%
Jun-22	90.56%	97.50%	97.33%	98.56%	OFF	98.71%
Jul-22	98.92%	98.79%	100.00%	91.10%	100.00%	97.54%
Aug-22	99.85%	96.77%	100.00%	96.24%	98.61%	100.00%
Sep-22	98.69%	100.00%	92.89%	96.01%	99.31%	99.17%
Oct-22	96.61%	97.27%	99.38%	100.00%	95.14%	98.66%
Nov-22	94.72%	95.66%	97.08%	98.85%	98.92%	97.64%

## Gaseous Emission Monitors

Availability												
	Unit 1		Unit 2		Unit 3		Unit 4		Unit 5		Unit 6	
Month	SO <sub>x</sub>	NO <sub>x</sub>	SO <sub>x</sub>	NO <sub>x</sub>	SO <sub>x</sub>	NO <sub>x</sub>	SO <sub>x</sub>	NO <sub>x</sub>	SO <sub>x</sub>	NO <sub>x</sub>	SO <sub>x</sub>	NO <sub>x</sub>
Dec-21	97.85%	97.85%	OFF	OFF	91.28%	91.42%	100.00%	99.87%	100.00%	100.00%	99.87%	100.00%
Jan-22	99.87%	100.00%	0.00%	0.00%	99.87%	100.00%	99.87%	100.00%	99.72%	100.00%	99.48%	99.48%
Feb-22	100.00%	100.00%	100.00%	100.00%	99.85%	100.00%	99.40%	99.40%	99.26%	99.40%	99.55%	99.55%
Mar-22	98.30%	98.30%	98.92%	99.06%	99.06%	99.33%	99.84%	100.00%	98.88%	98.88%	98.79%	98.66%
Apr-22	99.31%	99.31%	99.58%	99.86%	100.00%	99.86%	99.44%	99.86%	OFF	OFF	100.00%	100.00%
May-22	99.71%	99.86%	99.60%	99.60%	99.83%	99.83%	90.93%	91.16%	OFF	OFF	99.83%	99.83%
Jun-22	99.86%	99.86%	99.86%	99.86%	100.00%	100.00%	98.92%	99.07%	OFF	OFF	98.89%	99.17%
Jul-22	100.00%	100.00%	100.00%	100.00%	100.00%	100.00%	99.87%	100.00%	100.00%	100.00%	98.99%	98.85%
Aug-22	100.00%	100.00%	100.00%	100.00%	99.83%	99.83%	99.87%	99.73%	99.70%	99.57%	99.60%	99.73%
Sep-22	100.00%	100.00%	100.00%	100.00%	99.62%	100.00%	93.83%	93.83%	94.86%	94.86%	94.86%	94.86%
Oct-22	98.95%	78.72%	99.87%	100.00%	99.86%	99.86%	100.00%	100.00%	99.86%	99.86%	99.87%	99.87%
Nov-22	99.86%	99.86%	99.72%	99.86%	99.81%	99.81%	100.00%	100.00%	99.72%	99.72%	99.44%	99.44%

Oxygen Monitor Availability						
	Unit 1	Unit 2	Unit 3	Unit 4	Unit 5	Unit 6
Dec-21	97.58%	OFF	91.28%	94.76%	99.86%	100.00%
Jan-22	100.00%	OFF	99.87%	98.25%	99.17%	99.22%
Feb-22	100.00%	100.00%	98.74%	99.55%	99.40%	99.55%
Mar-22	98.30%	98.92%	99.19%	99.84%	98.88%	98.52%
Apr-22	99.13%	100.00%	100.00%	81.67%	OFF	99.72%
May-22	100.00%	99.73%	99.83%	99.75%	OFF	99.83%
Jun-22	99.72%	97.22%	99.52%	98.77%	OFF	98.75%
Jul-22	99.87%	99.87%	99.46%	99.87%	100.00%	98.99%
Aug-22	99.73%	99.60%	99.67%	99.73%	99.40%	99.60%
Sep-22	99.72%	99.71%	99.62%	93.67%	94.72%	94.44%
Oct-22	99.27%	99.87%	99.57%	99.73%	99.72%	99.60%
Nov-22	99.72%	99.72%	99.62%	98.82%	99.44%	99.58%

### ADDENDUM TO MONTHLY EMISSIONS REPORT

#### 14. EFFICIENCY

ESP Efficiency (%)						
	Unit 1	Unit 2	Unit 3	Unit 4	Unit 5	Unit 6
Dec-21	99.834%	OFF	99.744%	99.757%	99.837%	99.864%
Jan-22	99.845%	OFF	99.765%	99.807%	99.788%	99.834%
Feb-22	99.825%	99.561%	99.743%	99.823%	99.839%	99.745%
Mar-22	99.725%	99.623%	99.726%	99.768%	99.862%	99.816%
Apr-22	99.778%	99.748%	99.786%	99.822%	OFF	99.842%
May-22	99.672%	99.488%	99.880%	99.961%	OFF	99.844%
Jun-22	99.769%	99.712%	99.833%	99.657%	OFF	99.778%
Jul-22	99.850%	99.800%	99.818%	99.753%	99.955%	99.832%
Aug-22	99.878%	99.780%	99.768%	99.680%	99.872%	99.846%
Sep-22	99.836%	99.888%	99.868%	99.666%	99.863%	99.815%
Oct-22	99.779%	99.814%	99.807%	99.826%	99.803%	99.796%
Nov-22	99.767%	99.829%	99.861%	99.771%	99.757%	99.763%

15. REMARKS

UNIT	MWLOSS	REASON	ACTUALSTARTDATE	ACTUALENDDATE
1	148	High FAB levels.	2022/11/06 12:38:00	2022/11/06 16:44:00
1	200	FAB levels high.	2022/11/06 21:37:00	2022/11/07 04:30:00
1	96	AM: High stack emissions.	2022/11/12 20:38:00	2022/11/13 00:28:00
1	202	High stack emissions.	2022/11/13 11:09:00	2022/11/13 12:42:00
1	97	High stack emissions.	2022/11/14 10:30:00	2022/11/14 17:44:00
1	97	High stack emissions	2022/11/14 19:30:00	2022/11/14 20:10:00
1	150	high stack emissions	2022/11/14 20:10:00	2022/11/14 20:25:00
1	197	AM: High stack emissions.	2022/11/14 20:25:00	2022/11/15 05:02:00
1	98	EF: High stack emissions	2022/11/15 08:14:00	2022/11/15 15:04:00
1	219	EF: High stack emissions	2022/11/15 15:04:00	2022/11/16 00:00:00
1	100	LHO precip casing repairs.	2022/11/16 00:00:00	2022/11/16 20:35:00
1	49	EF: High stack emissions	2022/11/19 20:38:00	2022/11/20 00:00:00
1	200	EF: High stack emissions	2022/11/26 12:16:00	2022/11/26 17:19:00
1	100	High stack emissions	2022/11/26 19:43:00	2022/11/27 00:03:00
1	200	EF: High stack emissions	2022/11/27 20:55:00	2022/11/27 23:57:00
1	593	Generator vibrations	2022/11/27 23:57:00	2022/11/28 04:52:00
1	297	System Generated Ramp Event for Event id : 1763053	2022/11/28 04:52:00	2022/11/28 06:22:00
1	100	High stack emissions.	2022/11/29 14:20:00	2022/11/29 18:00:00
1	200	Emission tests.	2022/11/30 00:59:00	2022/11/30 05:14:00
1	218	Manual rapping of precip.	2022/11/30 20:26:00	2022/11/30 23:59:59
2	145	High FAB levels.	2022/11/06 12:26:00	2022/11/06 16:20:00
2	150	FAB levels high	2022/11/06 21:45:00	2022/11/07 04:19:00
2	97	High hopper levels.	2022/11/07 09:44:00	2022/11/07 14:33:00
2	50	High stack emissions.	2022/11/08 20:37:00	2022/11/09 00:09:00
2	50	AM: High stack emissions.	2022/11/12 20:29:00	2022/11/12 23:55:00
2	98	High stack emissions.	2022/11/13 11:07:00	2022/11/13 14:20:00
2	150	High stack emissions.	2022/11/13 14:20:00	2022/11/13 17:08:00
2	155	EF: High stack emissions	2022/11/13 19:44:00	2022/11/13 20:58:00
2	163	High emissions	2022/11/13 20:58:00	2022/11/13 21:11:00
2	171	EF: High stack emissions	2022/11/13 21:11:00	2022/11/13 23:12:00
2	97	High stack emissions.	2022/11/14 10:35:00	2022/11/14 18:10:00
2	148	High stack emissions	2022/11/14 20:21:00	2022/11/14 20:53:00
2	150	High stack emissions.	2022/11/15 00:13:00	2022/11/15 04:47:00
2	593	Unit tripped on black furnace	2022/11/16 06:41:00	2022/11/16 07:30:00
2	593	Unit shutdown coal supply T1A and T1B out of service	2022/11/16 07:30:00	2022/11/17 05:31:00
2	297	System Generated Ramp Event for Event id : 1759243 First Outage	2022/11/17 05:31:00	2022/11/17 07:01:00
2	296	System Generated Ramp Event for Event id : 1761022	2022/11/17 07:01:00	2022/11/17 08:01:00
2	297	System Generated Ramp Event for Event id : 1761140	2022/11/22 02:52:00	2022/11/22 04:22:00
2	593	Unit Trip on drum level	2022/11/24 21:57:00	2022/11/25 11:41:00
2	296	System Generated Ramp Event for Event id : 1762151	2022/11/25 11:41:00	2022/11/25 14:11:00
3	593	Boiler tube leak.	2022/11/06 21:13:00	2022/11/15 02:51:00
3	297	System Generated Ramp Event for Event id : 1755695	2022/11/15 02:51:00	2022/11/15 05:51:00
3	593	Unit shutdown coal supply T1A out of service.	2022/11/16 08:47:00	2022/11/17 02:21:00
3	296	System Generated Ramp Event for Event id : 1759266	2022/11/17 02:21:00	2022/11/17 04:51:00
3	117	High stack emissions.	2022/11/29 14:13:00	2022/11/29 16:44:00

UNIT	MWLOSS	REASON	ACTUALSTARTDATE	ACTUALENDDATE
4	114	High hopper levels.	2022/11/03 04:40:00	2022/11/03 09:03:00
4	48	EF: High stack emissions.	2022/11/03 19:31:00	2022/11/04 00:13:00
4	99	High FAB levels.	2022/11/06 12:34:00	2022/11/06 17:08:00
4	149	High FAB levels.	2022/11/06 22:21:00	2022/11/07 05:08:00
4	593	Boiler tube leak repairs.	2022/11/08 01:02:00	2022/11/10 00:06:00
4	297	System Generated Ramp Event for Event id : 1756331	2022/11/10 00:06:00	2022/11/10 03:06:00
4	48	High stack emissions	2022/11/11 23:55:00	2022/11/12 00:31:00
4	149	EF: High stack emissions	2022/11/12 00:31:00	2022/11/12 04:09:00
4	50	High stack emissions	2022/11/12 04:09:00	2022/11/12 04:29:00
4	144	High stack emissions.	2022/11/12 10:54:00	2022/11/12 12:02:00
4	168	High stack emissions	2022/11/12 12:02:00	2022/11/12 21:16:00
4	200	EF: High stack emissions	2022/11/12 21:16:00	2022/11/13 00:04:00
4	150	EF: High stack emissions	2022/11/13 00:04:00	2022/11/13 23:11:00
4	155	High stack emissions.	2022/11/14 10:55:00	2022/11/14 11:54:00
4	103	High stack emissions.	2022/11/15 00:02:00	2022/11/15 02:23:00
4	149	High stack emissions	2022/11/15 02:23:00	2022/11/15 16:52:00
4	87	High stack emissions	2022/11/15 16:52:00	2022/11/15 18:12:00
4	91	EF: High stack emissions	2022/11/15 18:12:00	2022/11/16 05:26:00
4	593	Unit shut down due to IR.	2022/11/16 08:44:00	2022/11/30 23:59:59
5	36	High stack emissions	2022/11/02 08:58:00	2022/11/02 09:48:00
5	117	EF: High stack emissions.	2022/11/02 09:48:00	2022/11/02 16:19:00
5	66	High stack emissions.	2022/11/02 19:34:00	2022/11/02 23:54:00
5	100	EF: high stack emissions.	2022/11/03 19:37:00	2022/11/04 00:27:00
5	100	EF: High stack emissions.	2022/11/04 19:45:00	2022/11/05 00:00:00
5	100	LHI Precip casing repairs	2022/11/05 00:00:00	2022/11/05 16:13:00
5	168	High FAB levels.	2022/11/06 12:47:00	2022/11/06 16:08:00
5	118	High FAB levels	2022/11/06 16:08:00	2022/11/06 17:37:00
5	100	FAB levels high.	2022/11/06 22:45:00	2022/11/07 04:51:00
5	100	HIGH HOPPER LEVELS	2022/11/07 09:16:00	2022/11/07 14:38:00
5	50	High stack emissions.	2022/11/08 19:40:00	2022/11/09 00:05:00
5	117	EF: High stack emissions	2022/11/09 20:15:00	2022/11/10 00:21:00
5	204	High stack emissions.	2022/11/11 11:37:00	2022/11/11 17:08:00
5	205	AM: High stack emissions.	2022/11/11 19:55:00	2022/11/11 23:59:00
5	108	RHO precip casing repairs	2022/11/11 23:59:00	2022/11/12 16:34:00
5	50	AM: High stack emissions.	2022/11/12 20:26:00	2022/11/12 22:30:00
5	108	EF: High stack emissions	2022/11/12 22:30:00	2022/11/13 00:29:00
5	80	High stack emissions.	2022/11/14 20:42:00	2022/11/15 00:30:00
5	593	unavailability of unavailability of coal	2022/11/16 07:49:00	2022/11/16 19:39:00
5	296	System Generated Ramp Event for Event id : 1759259	2022/11/16 19:39:00	2022/11/16 22:09:00
5	178	High stack emissions.	2022/11/18 19:55:00	2022/11/20 00:00:00
5	178	High stack emissions.	2022/11/24 00:04:00	2022/11/24 04:59:00
5	78	High stack emissions.	2022/11/25 10:45:00	2022/11/26 00:24:00
5	78	High stack emissions	2022/11/26 13:13:00	2022/11/26 16:44:00
5	78	High stack emissions	2022/11/26 19:27:00	2022/11/27 06:05:00
5	78	EF: High stack emissions	2022/11/27 20:10:00	2022/11/28 00:49:00
5	90	EF: High stack emissions	2022/11/28 20:01:00	2022/11/29 00:09:00

UNIT	MWLOSS	REASON	ACTUALSTARTDATE	ACTUALENDDATE
6	118	high stack emissions	2022/11/02 11:39:00	2022/11/02 16:12:00
6	68	High stack emissions.	2022/11/02 19:31:00	2022/11/02 23:56:00
6	118	LHO precip casing repairs.	2022/11/06 00:03:00	2022/11/06 16:16:00
6	51	High FAB levels.	2022/11/06 12:20:00	2022/11/06 16:15:00
6	122	LHO precip casing repairs	2022/11/06 16:16:00	2022/11/06 17:24:00
6	218	High FAB levels	2022/11/06 23:10:00	2022/11/07 04:33:00
6	118	High hopper levels.	2022/11/07 09:26:00	2022/11/07 14:44:00
6	54	High stack emissions.	2022/11/13 12:42:00	2022/11/13 16:50:00
6	119	AM: High stack emissions.	2022/11/14 20:37:00	2022/11/14 21:38:00
6	218	AM: High stack emissions.	2022/11/14 21:38:00	2022/11/14 22:07:00
6	120	AM: High ash hoppers	2022/11/15 00:40:00	2022/11/15 08:50:00
6	218	AM: High ash hoppers	2022/11/15 08:50:00	2022/11/16 15:25:00
6	268	AM: High ash hoppers	2022/11/16 15:25:00	2022/11/19 17:20:00
6	118	EF: High hopper levels	2022/11/19 19:27:00	2022/11/20 00:06:00
6	216	AM: High hopper levels	2022/11/20 00:06:00	2022/11/20 04:42:00
6	118	High hopper levels	2022/11/20 04:42:00	2022/11/20 07:49:00
6	219	High ash hopper levels.	2022/11/20 10:41:00	2022/11/20 16:46:00
6	593	Main turbine physical over speed test	2022/11/20 21:41:00	2022/11/21 02:24:00
6	297	System Generated Ramp Event for Event id : 1760757	2022/11/21 02:24:00	2022/11/21 03:54:00
6	218	AM: High hopper levels	2022/11/21 04:00:00	2022/11/21 05:00:00
6	218	AM: High hopper levels	2022/11/21 09:41:00	2022/11/21 16:05:00
6	218	High hopper levels	2022/11/21 23:42:00	2022/11/23 04:34:00
6	50	EF: High stack emissions	2022/11/24 20:11:00	2022/11/25 00:18:00
6	118	High stack emissions.	2022/11/25 11:30:00	2022/11/26 00:00:00
6	118	LHI Precip casing repairs	2022/11/26 00:00:00	2022/11/27 00:00:00

PM Exceedances		
U1.	ESP poor performance & Manual Rapping	10-Nov
U1.	High Hopper Levels and Poor ESP Performance	13-Nov
U1.	ESP Poor Performance and High Hopper Levels	14-Nov
U1.	ESP Poor Performance and High Hopper Levels	16-Nov
U1.	ESP Poor Performance and Manual rapping	22-Nov
U1.	ESP Poor Performance (especially LHO)	25-Nov
U1.	Prolonged Manual Rapping and ESP Poor Performance Unit shut down with boiler on bypass	28-Nov
U1.	Poor ESP performance High Hopper Levels Test to isolate two casings on load.	29-Nov
U1.	Poor ESP Performance and Prolonged Manual Rapping High Hopper Level	30-Nov
U2.	ESP Poor Performance and one high hopper level	13-Nov
U2.	Clean Rapping Brought forward ESP Poor Performance 2 High Hopper Level	14-Nov
U2.	Unit Tripped	16-Nov
U2.	The unit synchronised on 2022/11/17 @ 05:32. The unit needs to be within the limit by 2022/11/20 @ 05:32, and remain below the limit until 2022/11/21 @ 23:59	17-Nov
U2.	Unit Light Up	18-Nov
U2.	Unit Trip	24-Nov
U3.	The unit synchronised on 2022/11/15 @ 02:51. The unit needs to be within the limit by 2022/11/18 @ 02:51, and remain below the limit until 2022/11/19 @ 23:59	15-Nov
U3.	Unit Shut Down Due to Coal Supply Issue	16-Nov
U3.	The unit synchronised on 2022/11/17 @ 02:21. The unit needs to be within the limit by 2022/11/20 @ 02:21, and remain below the limit until 2022/11/21 @ 23:59	17-Nov
U3.	Unit Light Up	19-Nov
U3.	SO3 plant blower issue	29-Nov
U3.	SO3 plant blower issue resolved and plant in service at 3am High Hopper Levels Manual Rapping	30-Nov
U4.	Ops reported that the LHO casing is isolated this morning due to 14WX22 was standing and caused the high hopper levels. Clean Rapping brought forward.	03-Nov
U4.	Starting up from 00:06 10/11/2022, the unit needs to be within the limit by 00:06 13/11/2022	10-Nov
U4.	Unit Light Up	11-Nov
U4.	Unit Light up	12-Nov
U4.	Unit was supposed to be shut down yesterday, but is still on load to empty coal bunkers. Ops is in progress running it down.	14-Nov
U4.	Unit was supposed to be shut down yesterday, but is still on load to empty coal bunkers. Ops is in progress running it down.	15-Nov
U4.	Unit Shut down for Outage	16-Nov

U5.	Dust Handling Plant Challenges and Poor ESP Performance	01-Nov
U5.	LHI Casing Outage	
U5.	ESP Poor Performance and High Hopper levels and Clean rapping brought forward	10-Nov
U5.	ESP Poor Performance	12-Nov
U5.	Unit shut down for coal supply issue The unit synchronised on 2022/11/16 @ 19:39. The unit needs to be within the limit by 2022/11/19 @ 19:39, and remain below the limit until 2022/11/21 @ 23:59	16-Nov
U5.	Unit Light Up	17-Nov
U5.	Light up and SO3 plant heater issue	18-Nov
U5.	ESP High hopper levels and ESP poor performance	22-Nov
U5.	Manual rapping and poor esp performance	24-Nov
U5.	Prolonged Manual rapping and Poor ESP performance	29-Nov
U6.	LHO Casing repairs	06-Nov
U6.	High Hopper Levels	14-Nov
U6.	ESP Poor Performance and High hopper levels	15-Nov
U6.	Dust Handling Plant Challenges	16-Nov
U6.	ESP high hopper levels	19-Nov
U6.	ESP high hopper levels	20-Nov
U6.	ESP high hopper levels Manual rapping	21-Nov
U6.	ESP Poor Performance and High Hopper Levels	25-Nov
U6.	Casing Outage	26-Nov