



Mr. Mcebo Mkhathshwa  
Air Quality Officer  
Fezile Dabi District Municipality  
P.O Box 10  
Sasolburg  
1947

Date:  
28 March 2024

Enquiries:  
W de Klerk  
Tel +27 16 457 5308

**LCR01PLA000\_0387/20240311**

Dear Mr. Mkhathshwa

**LETHABO POWER STATION EMISSION MONTHLY REPORT FOR FEBRUARY 2024**

Please find attached Lethabo Power Station emission report for the month of February 2024.

Also attached are the Ambient Air Quality Monitoring Report, Complaints Register and the Fugitive Dust Fallout Monitoring Report for February 2024.

For any additional information please do not hesitate to contact us.

Yours sincerely

A handwritten signature in black ink, appearing to read "Karabo Rakgolela", written over a circular scribble.

**Karabo Rakgolela**  
**GENERAL MANAGER**

**Generation Division**  
Lethabo Power Station  
Viljoensdrif / Deneysville Free State  
Private Bag X415 Vereeniging 1930 SA  
Tel +27 16 457 5111 [www.eskom.co.za](http://www.eskom.co.za)

Eskom Holdings SOC Ltd Reg No 2002/015527/30



Report

Lethabo Power Station

Report name: **Lethabo Power Station  
February 2024  
Emission Report**

Reference number: **LCR01PLA000\_0387/20240311**  
Document Type: **Report**  
Area of Applicability: **Environment**  
Report Date: **March-2024**  
Classification: **Controlled Disclosure**

Signatures:

Compiled by:

P Parag  
System Engineer

Date: 2024 03 22

Verified by:

W de Klerk  
Senior Advisor

Date: 2024 03 22

Reviewed by:

S Zulu  
Acting BPE Manager

Date: 25/03/2024

Reviewed by:

C Govinden  
PE Manager

Date: 2024/03/22

Reviewed by:

L Nel  
C&I Manager

Date: 2024-06-22

Reviewed by:

pp M Hariram  
Environmental Manager

Date: 2024 03 22

Reviewed by:

H Sewsunker  
Technical Manager

Date: 2024 03 26

Approved by:

Oricca Nkejane  
Acting Engineering Manager

Date: 25-03-2024

**CONTROLLED DISCLOSURE**

When downloaded from the database, this document is uncontrolled and it is the responsibility of the user to ensure that it is the same as the authorised revision on the data base

Copyright © 2008, Eskom Generation, Lethabo Power Station

**LETHABO POWER STATION MONTHLY EMISSIONS REPORT**

Atmospheric Emission License FDDM-MET-2011-08-P1


**1. RAW MATERIALS AND PRODUCTS**

Raw Materials and Products	Raw Material Type	Units	Maximum Permitted Consumption Rate	Consumption Rate Feb-2024
	Coal	Tons	2 000 000	1 206 294
Fuel Oil	Tons	1 700	1142.900	

Production Rates	Product / By-Product Name	Units	Maximum Production Capacity Permitted	Indicative Production Rate Feb-2024
	Energy	GWh	2 651.760	1 327.526
Ash	Tons	770 000	460 563.057	
RE Ash	kg/MWh	Not Specified	346.933	

Note: Maximum energy rate is as per the maximum capacity stated in the AEL:  $[3\ 810\ MW] \times 24\ hrs \times days\ in\ Month / 1000$  to convert to GWh.

**2. ENERGY SOURCE CHARACTERISTICS**

Coal Characteristic	Units	Stipulated Range	Monthly Average Content
Sulphur Content	%	0.656 (Standard)	0.620
Ash Content	%	37.37 (Standard)	38.180

Note: The "standard" is not necessary a limit, but merely a optimum indication, it will fluctuate as the coal quality changes. The Stipulated Range are the Station acceptance test values.

### 3. EMISSION LIMITS (mg/Nm<sup>3</sup>)

Associated Unit/Stack	PM	SO <sub>2</sub>	NOx
Unit 1	100	3500	1100
Unit 2	100	3500	1100
Unit 3	100	3500	1100
Unit 4	100	3500	1100
Unit 5	100	3500	1100
Unit 6	100	3500	1100

### 4. ABATEMENT TECHNOLOGY (%)

Associated Unit/Stack	Technology Type	Efficiency Feb-2024	Technology Type	SO <sub>3</sub> Utilization Feb-2024
Unit 1	Electrostatic Precipitator (ESP)	99.83%	SO <sub>3</sub>	99.9%
Unit 2	Electrostatic Precipitator (ESP)	99.72%	SO <sub>3</sub>	87.6%
Unit 3	Electrostatic Precipitator (ESP)	99.70%	SO <sub>3</sub>	98.9%
Unit 4	Electrostatic Precipitator (ESP)	99.79%	SO <sub>3</sub>	95.7%
Unit 5	Electrostatic Precipitator (ESP)	99.84%	SO <sub>3</sub>	88.1%
Unit 6	Electrostatic Precipitator (ESP)	Unit Off-line	SO <sub>3</sub>	Off-line

Note: ESP plant does not have bypass mode operation, hence plant 100% Utilised.

### 5. MONITOR RELIABILITY (%)

Associated Unit/Stack	PM	SO <sub>2</sub>	NO
Unit 1	96.7	98.1	98.1
Unit 2	93.8	99.8	98.9
Unit 3	93.4	98.3	98.3
Unit 4	96.1	97.8	97.8
Unit 5	98.8	97.7	97.7
Unit 6	Off	Off	Off

Note: NOx emissions is measured as NO in PPM. Final NOx value is expressed as total NO<sub>2</sub>

## 6. EMISSION PERFORMANCE

Table 6.1: Monthly tonnages for the month of February 2024

Associated Unit/Stack	PM (tons)	SO <sub>2</sub> (tons)	NO <sub>x</sub> (tons)
Unit 1	159.9	2 824	1 482
Unit 2	171.7	2 186	780
Unit 3	294.4	3 051	1 182
Unit 4	191.0	3 014	1 341
Unit 5	115.7	2856	1157
Unit 6	Off	Off	Off
<b>SUM</b>	<b>932.7</b>	<b>13 931</b>	<b>5 942</b>

Table 6.2: Operating days in compliance to PM AEL Limit - February 2024

Associated Unit/Stack	Normal	Grace	Section 30	Contra-vention	Total Exceedance	Average PM (mg/Nm <sup>3</sup> )
Unit 1	15	10	0	0	10	100.0
Unit 2	9	8	0	0	8	162.8
Unit 3	14	15	0	0	15	181.8
Unit 4	15	8	0	0	8	125.1
Unit 5	17	4	0	0	4	86.4
Unit 6	Off	Off	Off	Off	Off	Off
<b>SUM</b>	<b>70</b>	<b>45</b>	<b>0</b>	<b>0</b>	<b>45</b>	

Table 6.3: Operating days in compliance to SO<sub>2</sub> AEL Limit - February 2024

Associated Unit/Stack	Normal	Grace	Section 30	Contra-vention	Total Exceedance	Average SO <sub>2</sub> (mg/Nm <sup>3</sup> )
Unit 1	26	0	0	0	0	1 671.9
Unit 2	19	0	0	0	0	1 850.1
Unit 3	29	0	0	0	0	1 908.5
Unit 4	25	0	0	0	0	1 743.5
Unit 5	22	0	0	0	0	1 848.8
Unit 6	Off	Off	Off	Off	Off	Off
<b>SUM</b>	<b>121</b>	<b>0</b>	<b>0</b>	<b>0</b>	<b>0</b>	

Table 6.4: Operating days in compliance to NOx AEL Limit - February 2024

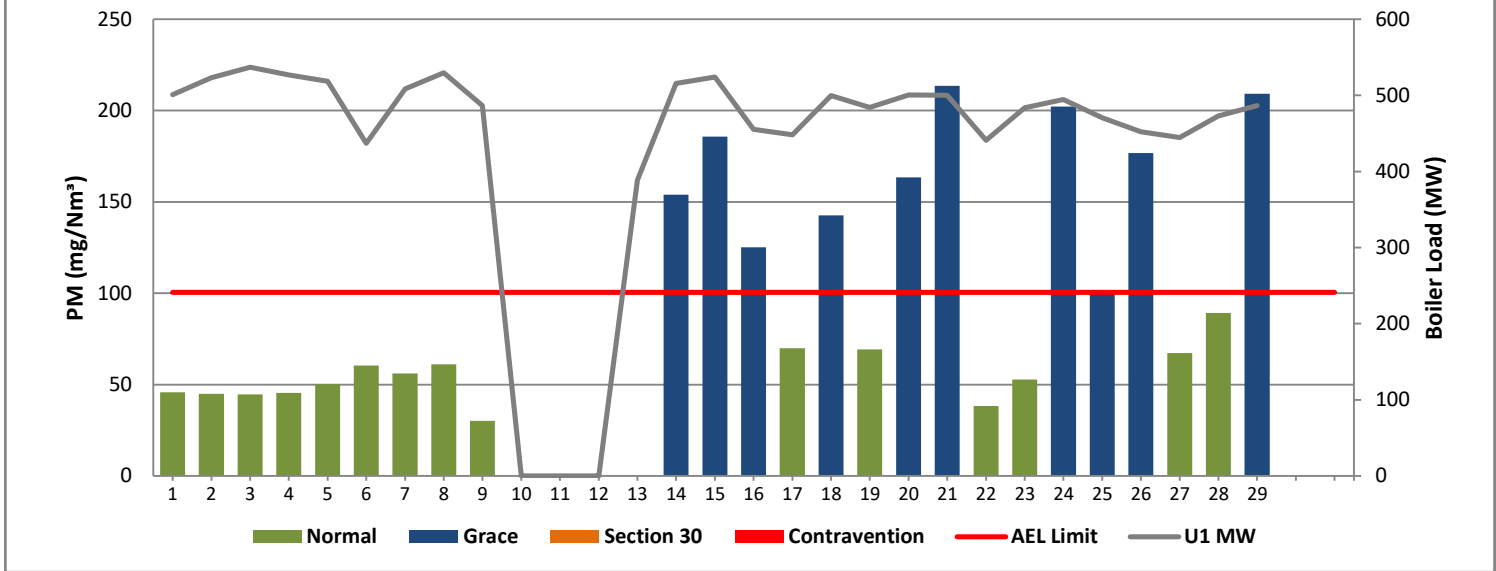
Associated Unit/Stack	Normal	Grace	Section 30	Contra-vention	Total Exceedance	Average NOx (mg/Nm <sup>3</sup> )
Unit 1	26	0	0	0	0	871.3
Unit 2	19	0	0	0	0	644.5
Unit 3	29	0	0	0	0	737.2
Unit 4	25	0	0	0	0	754.8
Unit 5	22	0	0	0	0	746.5
Unit 6	Off	Off	Off	Off	Off	Off
<b>SUM</b>	<b>121</b>	<b>0</b>	<b>0</b>	<b>0</b>	<b>0</b>	

Note: NOx emissions is measured as NO in PPM. Final NOx value is expressed as total NO<sub>2</sub>

Table 6.5: Legend Description

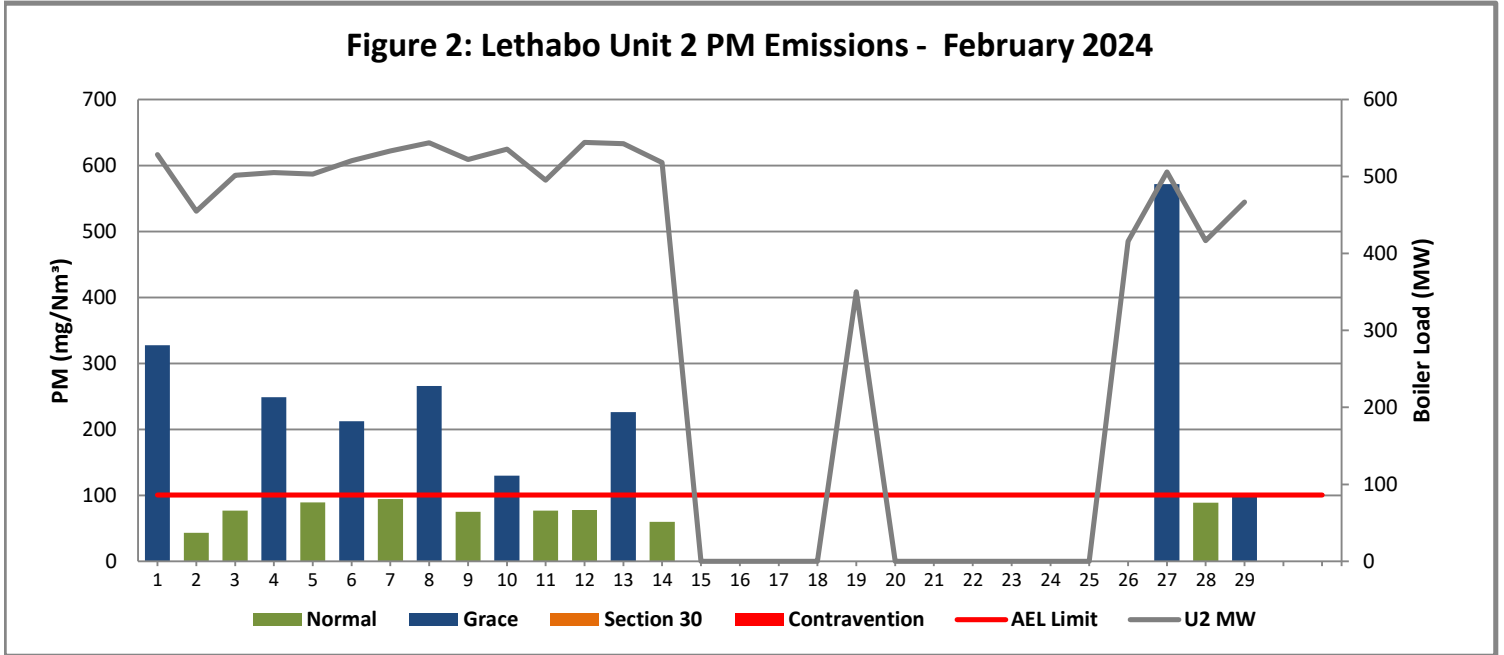
Condition	Colour	Description
Normal	GREEN	Emissions below Emission Limit Value (ELV)
Grace	BLUE	Emissions above the ELV during grace period
Section 30	ORANGE	Emissions above ELV during a NEMA S30 incident
Contra-vention	RED	Emissions above ELV but outside grace or S30 incident conditions

**Figure 1: Lethabo Unit 1 PM Emissions - February 2024**



Reasons:	
Date	Description:
13-Feb	The unit synchronised on 2024/02/13 @ 20:38, therefore the emissions need to be below the limit by 2024/02/16 @ 20:38 and remain below the limit until 2024/02/17 @ 23:59
14-Feb	Unit Light Up
15-Feb	Unit Light Up
16-Feb	Unit Light Up
18-Feb	Manual Rapping
20-Feb	Monitor Maxed out during clean rapping ESP Poor Performance
21-Feb	ESP Poor Performance Clean Rapping brought forward
24-Feb	RHI Casing Outage
25-Feb	High Hopper Levels Monitor maxed out during clean rapping
26-Feb	ESP Poor Performance
29-Feb	RHI Casing Outage

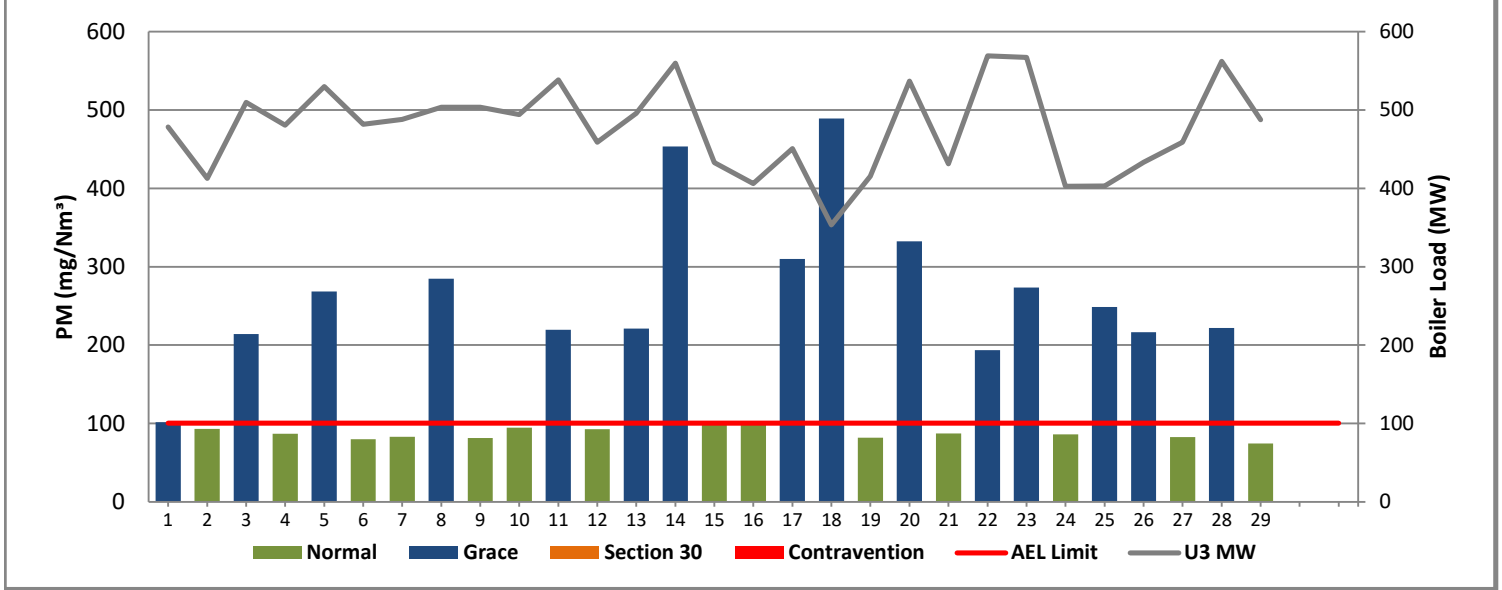
**Figure 2: Lethabo Unit 2 PM Emissions - February 2024**



Reasons:	
Date	Description:
01-Feb	Unit Light Up
04-Feb	Casing Outage
06-Feb	ESP Poor Performance and Manual Rapping
08-Feb	ESP Poor Performance and Manual Rapping
13-Feb	Manual Rapping
14-Feb	Unit Shut Down for Boiler Tube Leak
26-Feb	The unit synchronised on 2024/02/26 @ 00:22, therefore the emissions need to be below the limit by 2024/02/29 @ 00:22 and remain below the limit until atleast 2024/03/01 @ 23:59
27-Feb	Unit Light Up
29-Feb	ESP Poor Performance

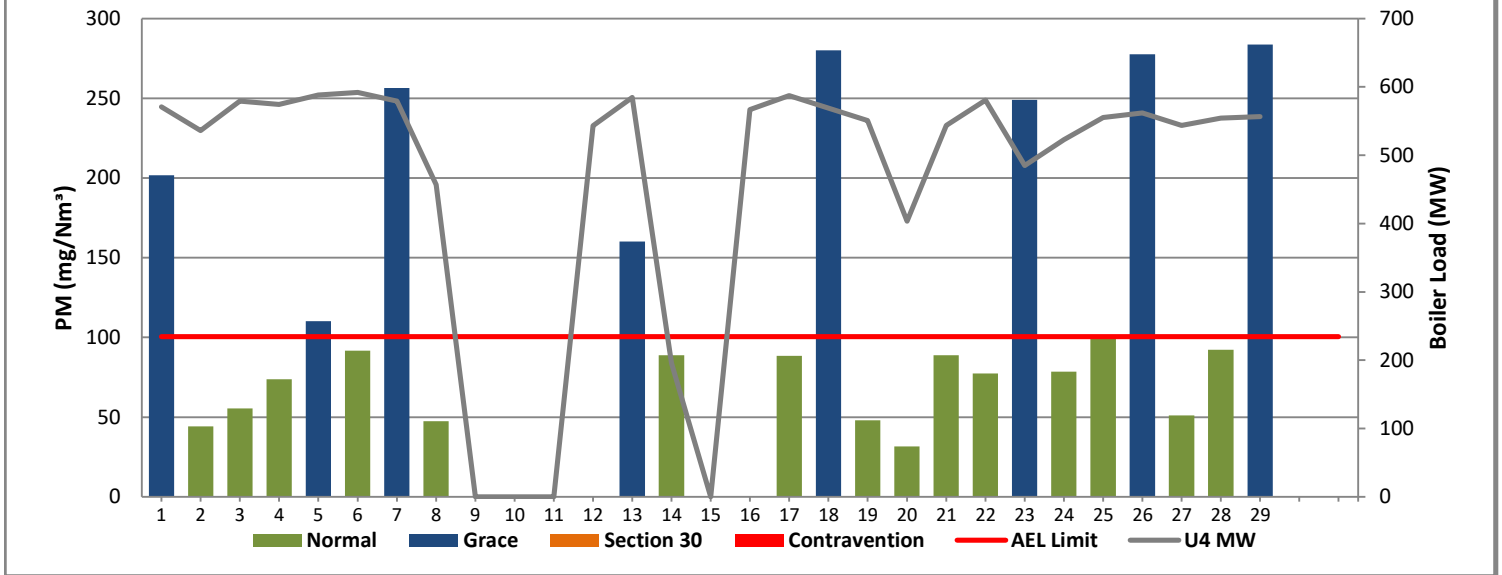


**Figure 3: Lethabo Unit 3 PM Emissions - February 2024**



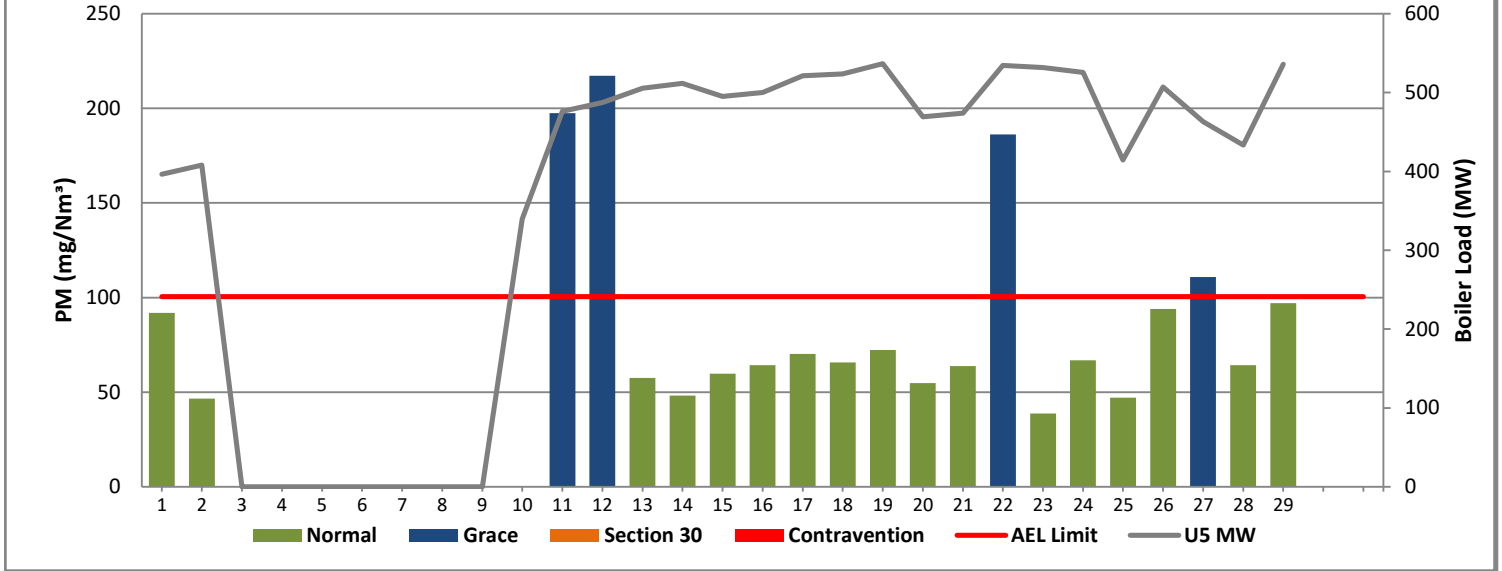
Reasons:	
Date	Description:
01-Feb	ESP Poor Performance
03-Feb	Casing Outage
05-Feb	ESP Poor Performance and Manual Rapping
08-Feb	ESP Poor Performance SO3 plant off for blower replacement
11-Feb	ESP Poor Performance and Manual Rapping
13-Feb	SO3 plant sulphur flow was reduced to 10 kg/hr and increased again this morning to 48 as the burner was suspected to flooded and had to burn of sulphur. Manual Rapping
14-Feb	Manual Rapping
17-Feb	Turbin tripped, boiler on load
18-Feb	Turbine tripped boiler on load LHI Casing Outage
20-Feb	SO3 plant challenges ESP Poor Performance
22-Feb	SO3 plant challenges ESP Poor Performance
23-Feb	Clean Rapping Brought Forward
25-Feb	ESP Poor Performance Manual Rapping
26-Feb	LHI Casing Outage
28-Feb	ESP Poor Performance Manual Rapping

**Figure 4: Lethabo Unit 4 PM Emissions - February 2024**



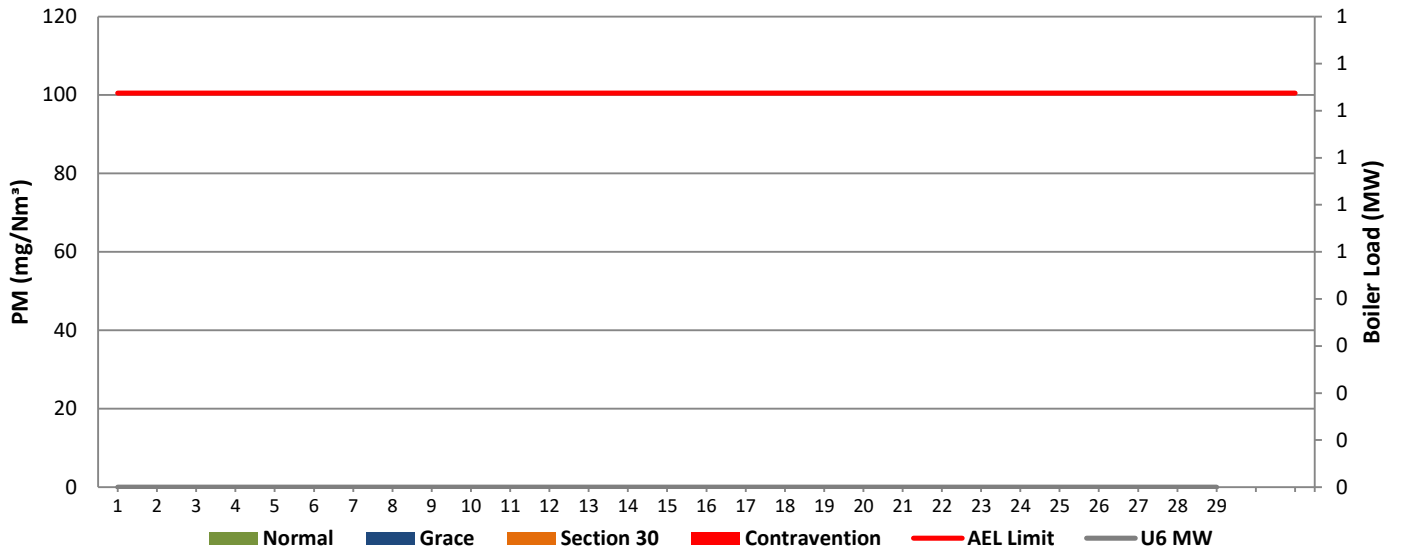
Reasons:	
Date	Description:
01-Feb	ESP Poor Performance and manual rapping
05-Feb	ESP Poor Performance High Hopper Levles SO3 Plant no flow due to sulphur control valve failed
07-Feb	ESP Poor Performance and Manual Rapping
12-Feb	The unit synchronised on 2024/02/12 @ 03:58, therefore the emissions need to be below the limit by 2024/02/15 @ 03:58 and remain below the limit until 2024/02/16 @ 23:59
13-Feb	Unit Light Up
14-Feb	Unit was shut down this morning for 20kV breaker repairs
16-Feb	Unit synchronised on load 2024/02/16 02:16
18-Feb	DHP challenges (only one stream) High Hopper Levels ESP Poor Performance
23-Feb	Unit Trip 07:25
26-Feb	ESP Poor Performance
29-Feb	ESP Poor Performance and Manual Rapping

**Figure 5: Lethabo Unit 5 PM Emissions - February 2024**



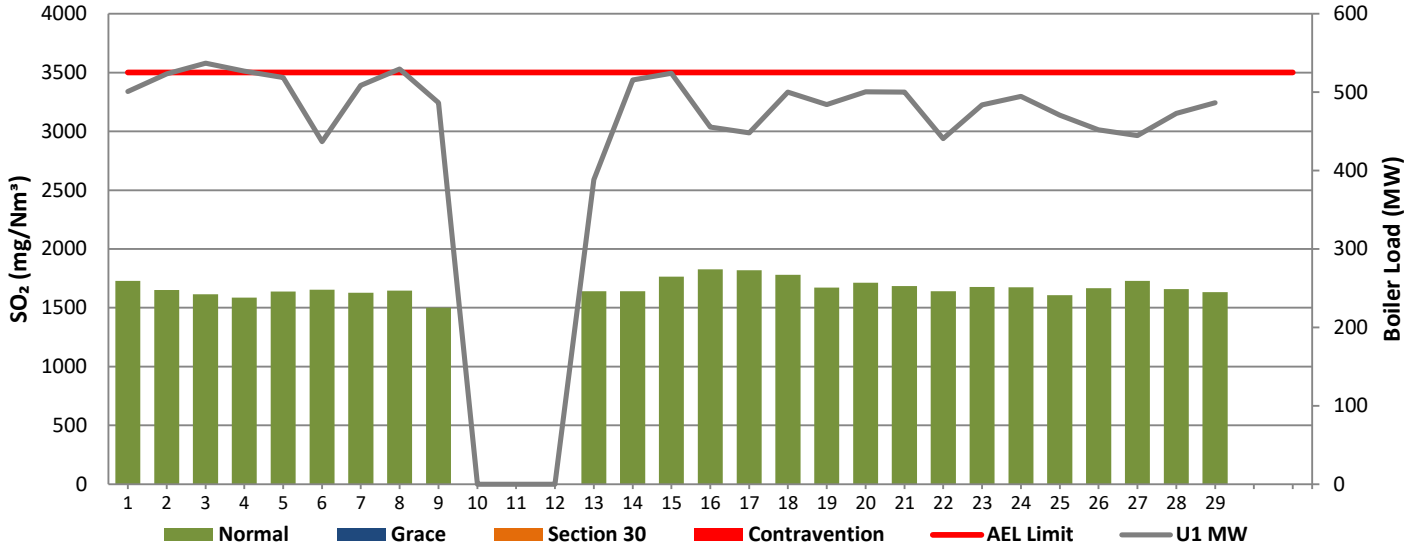
Reasons:	
Date	Description:
10-Feb	The unit synchronised on 2024/02/10 @ 09:40, therefore the emissions need to be below the limit by 2024/02/13 @ 09:40 and remain below the limit until 2024/02/16 @ 23:59
11-Feb	Unit Light Up
12-Feb	Unit Light Up
22-Feb	Manual Rapping SO3 plant chllanges
27-Feb	The unit synchronised on 2024/02/27 @ 14:05, therefore the emissions need to be below the limit by 2024/03/01 @ 14:05 and remain below the limit until atleast 2024/03/02 @ 23:59

**Figure 6: Lethabo Unit 6 PM Emissions - February 2024**

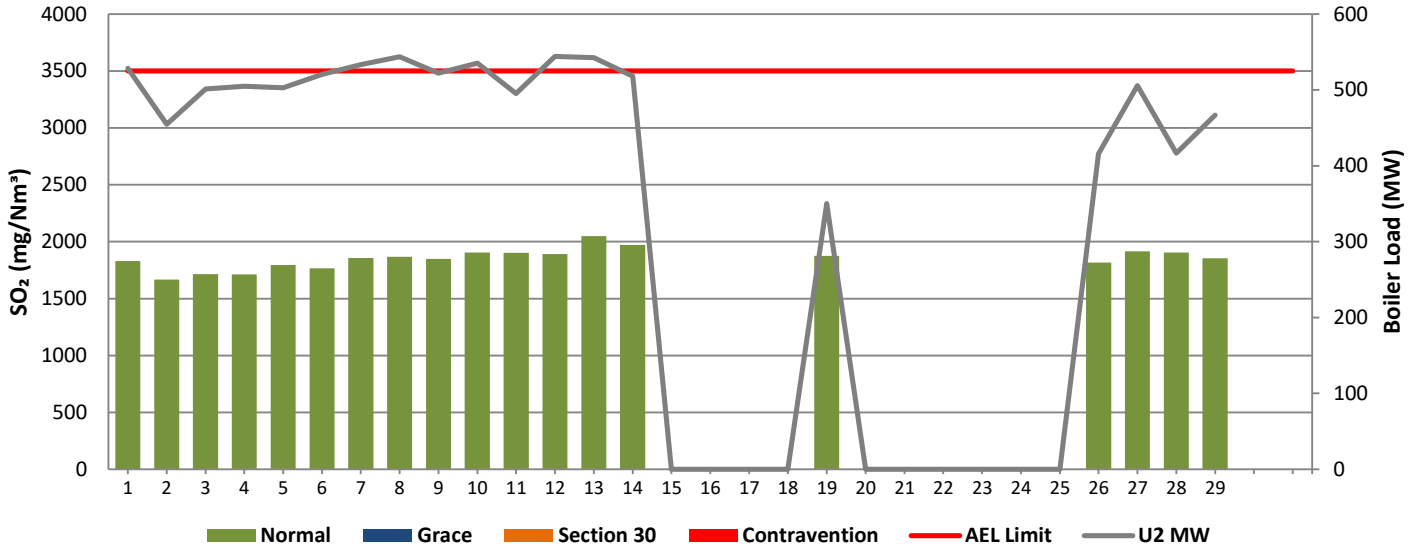


<b>Reasons:</b>	
<b>Date</b>	<b>Description:</b>

**Figure 7: Lethabo Unit 1 SO<sub>2</sub> Emissions - February 2024**



**Figure 8: Lethabo Unit 2 SO<sub>2</sub> Emissions - February 2024**



**Figure 9: Lethabo Unit 3 SO<sub>2</sub> Emissions - February 2024**

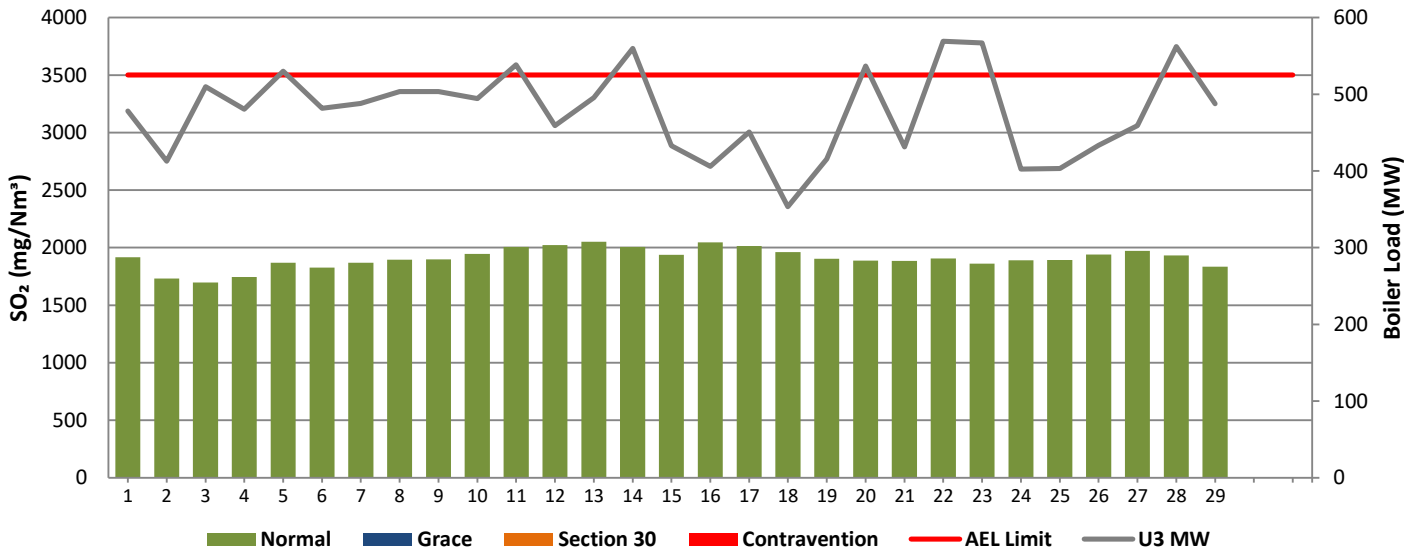


Figure 10: Lethabo Unit 4 SO<sub>2</sub> Emissions - February 2024

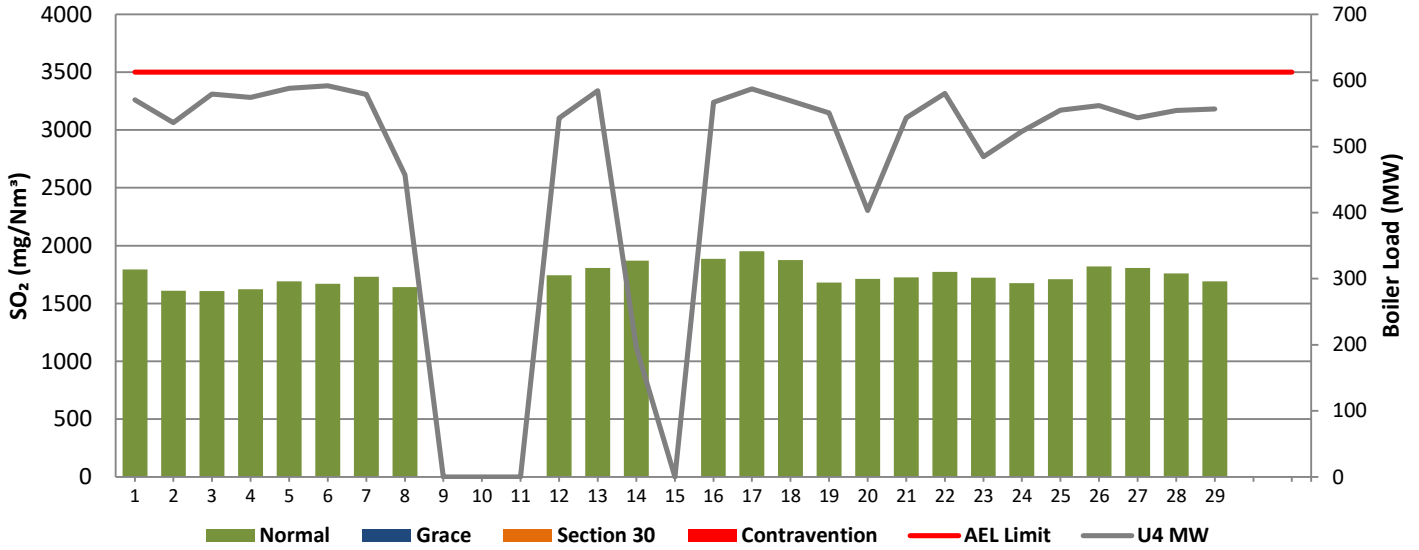


Figure 11: Lethabo Unit 5 SO<sub>2</sub> Emissions - February 2024

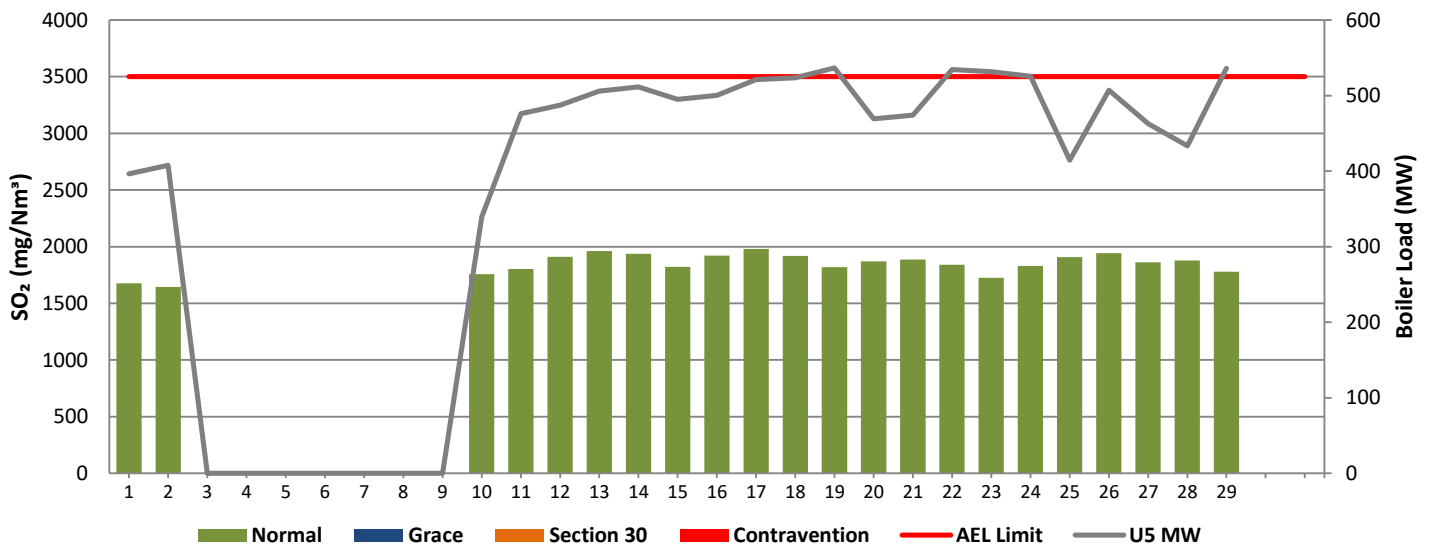


Figure 12: Lethabo Unit 6 SO<sub>2</sub> Emissions - February 2024

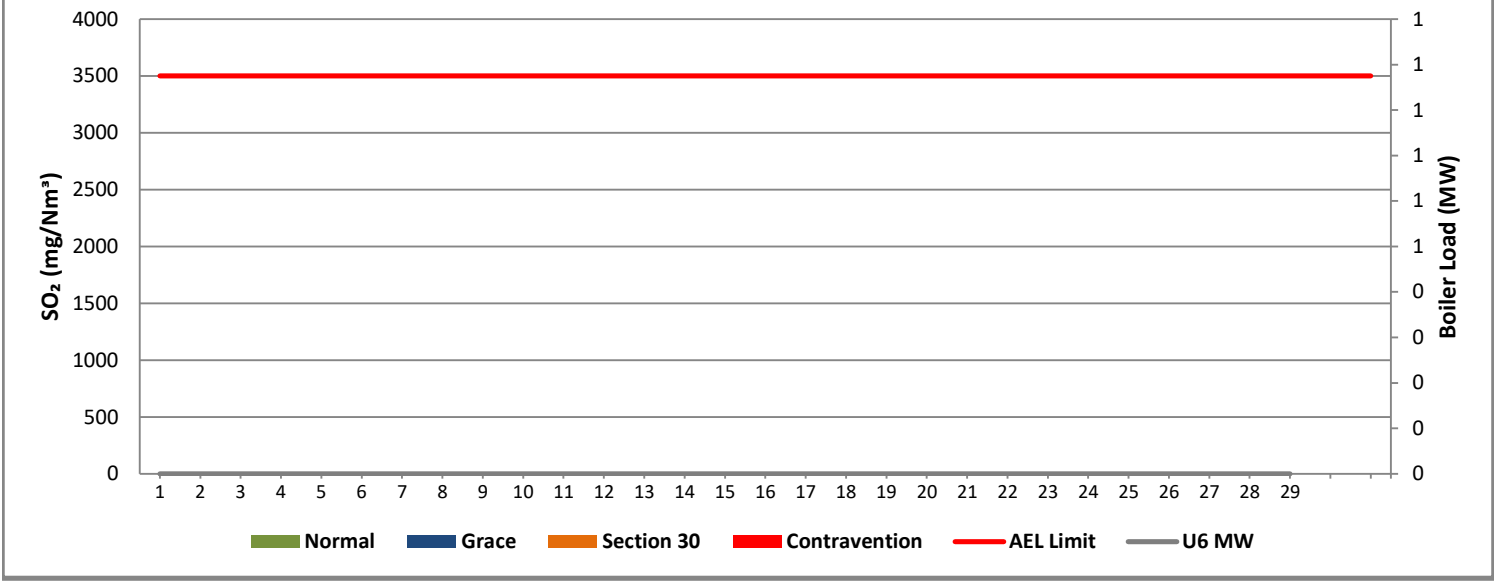
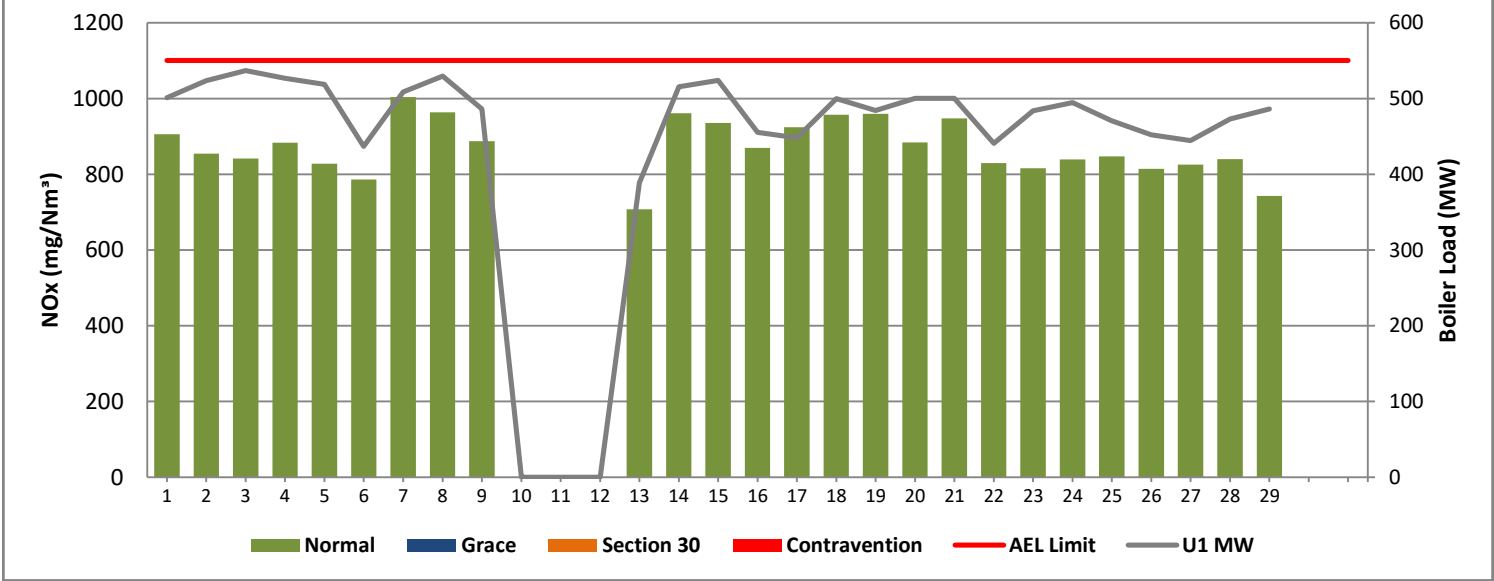
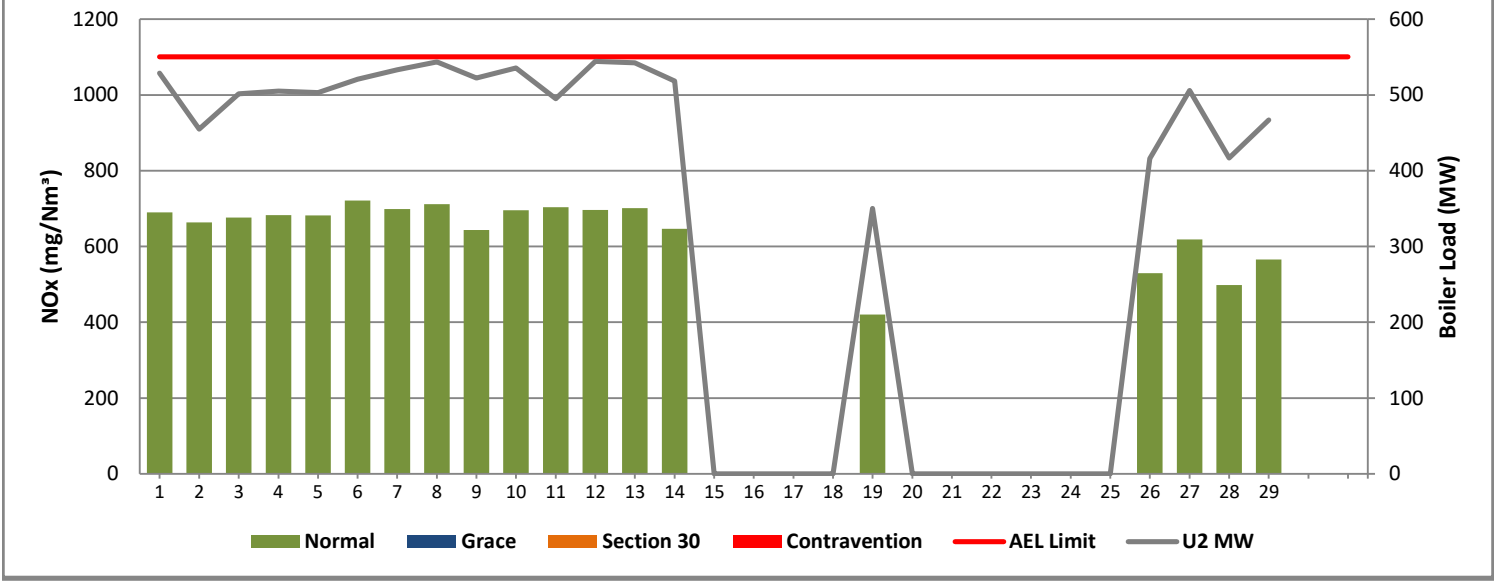


Figure 13: Lethabo Unit 1 NO<sub>x</sub> Emissions - February 2024

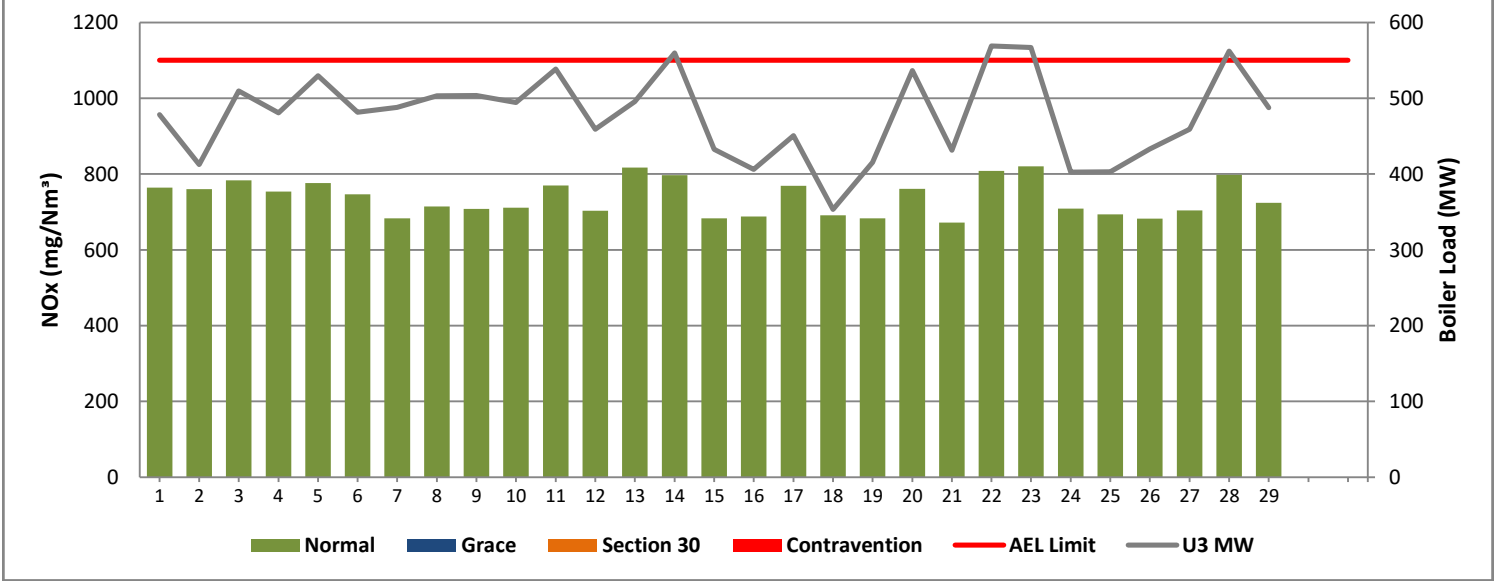




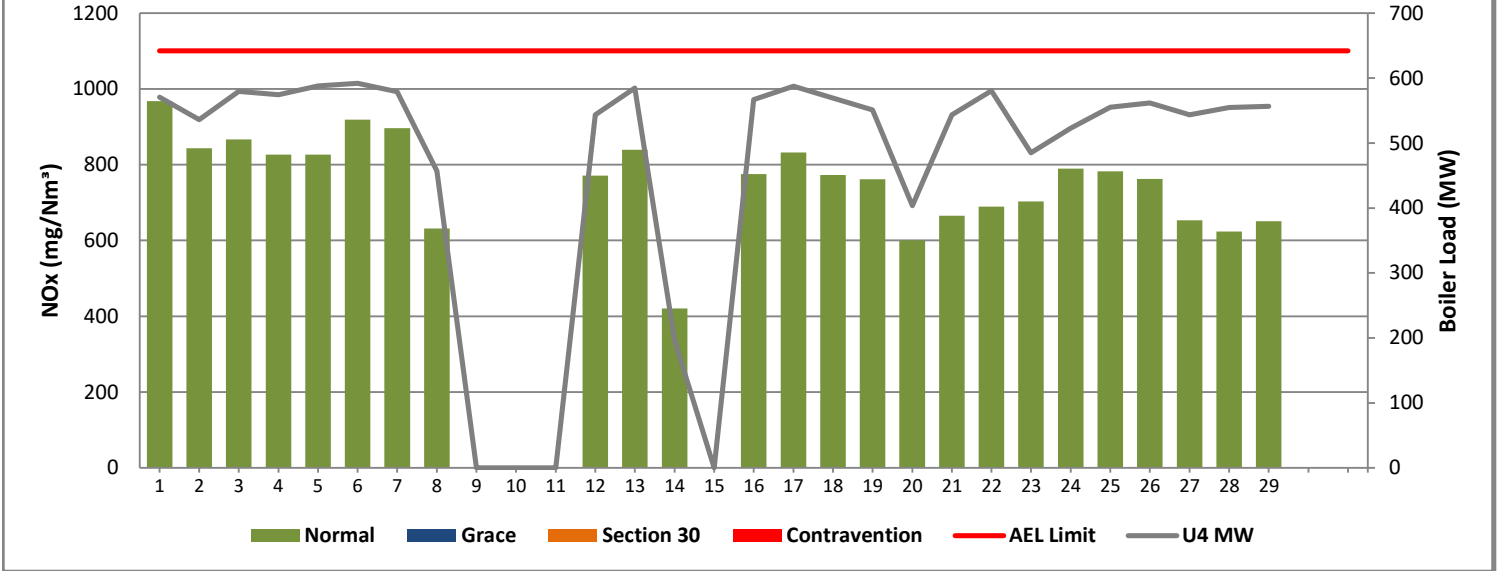
**Figure 14: Lethabo Unit 2 NOx Emissions - February 2024**



**Figure 15: Lethabo Unit 3 NOx Emissions - February 2024**



**Figure 16: Lethabo Unit 4 NOx Emissions - February 2024**



**Figure 17: Lethabo Unit 5 NOx Emissions - February 2024**

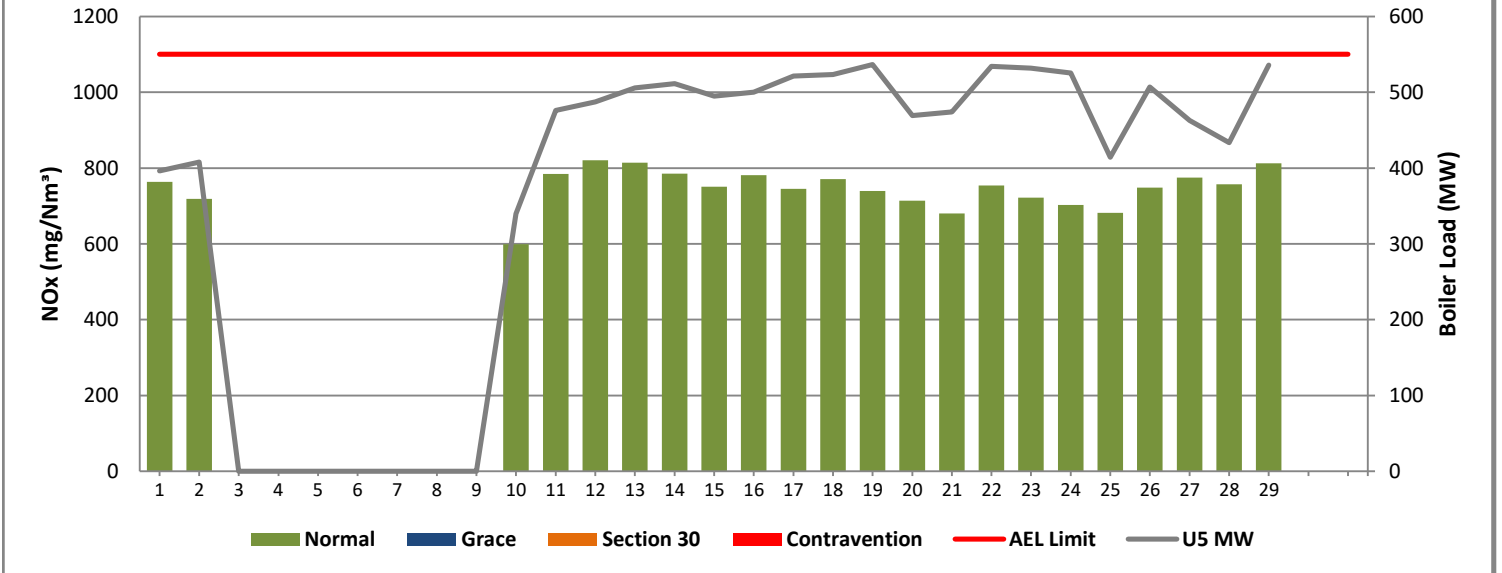
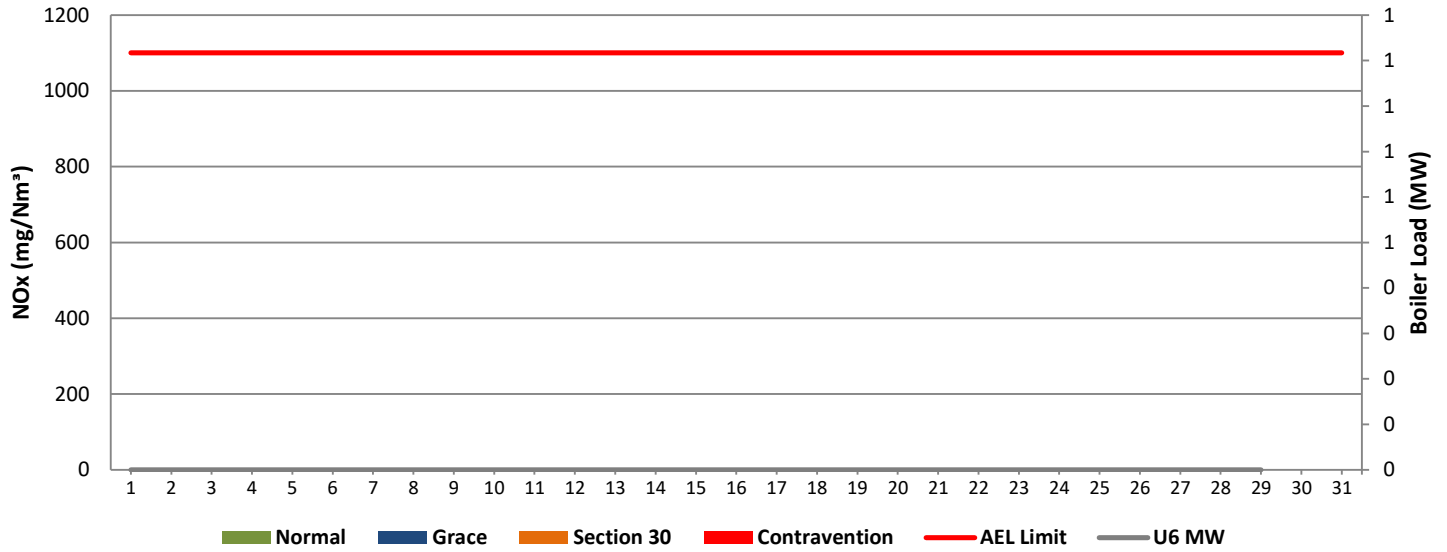


Figure 18: Lethabo Unit 6 NOx Emissions - February 2024



## 7 SHUT DOWN AND LIGHT UP INFORMATION

Table 7.1: PM Start-up information for the month of February 2024

Unit No.1	<i>Boiler tube leak</i>							
Breaker Open (BO)	8:17 PM	2024/02/09						
Draught Group (DG) Shut Down (SD)	11:00 AM	2024/02/10						
BO to DG SD (duration)	00:14:43	DD:HH:MM		DD:HH:MM		DD:HH:MM		DD:HH:MM
Fires in time	4:56 PM	2024/02/13						
Synch. to Grid (or BC)	8:38 PM	2024/02/13						
Fires in to BC (duration)	00:03:42	DD:HH:MM		DD:HH:MM		DD:HH:MM		DD:HH:MM
Emissions below limit from BC (end date)	8:00 AM	2024/02/16						
Emissions below limit from BC (duration)	02:11:22	DD:HH:MM		DD:HH:MM		DD:HH:MM		DD:HH:MM

Unit No.2	<i>Boiler Tube leak.</i>		<i>Manual trip due to boiler tube leak</i>		<i>Unit tripped on main turbine FRF pressure low.</i>			
Breaker Open (BO)	10:11 AM	2024/02/14	3:49 PM	2024/02/19	4:22 AM	2024/02/26		
Draught Group (DG) Shut Down (SD)	11:11 PM	2024/02/14	5:11 AM	2024/02/20	DG did not trip or SD	DG did not trip or SD		
BO to DG SD (duration)	00:13:00	DD:HH:MM	00:13:22	DD:HH:MM	n/a	DD:HH:MM		DD:HH:MM
Fires in time	4:53 AM	2024/02/19	10:40 PM	2024/02/25	5:03 AM	2024/02/26		
Synch. to Grid (or BC)	6:19 AM	2024/02/19	12:22 AM	2024/02/26	9:08 AM	2024/02/26		
Fires in to BC (duration)	00:01:26	DD:HH:MM	00:01:42	DD:HH:MM	00:04:05	DD:HH:MM		DD:HH:MM
Emissions below limit from BC (end date)	not > limit	not > limit	1:00 AM	2024/02/28	1:00 AM	2024/02/28		
Emissions below limit from BC (duration)	n/a	DD:HH:MM	02:00:38	DD:HH:MM	01:15:52	DD:HH:MM		DD:HH:MM

<b>Unit No.3</b>	<i>Turbine diff expansion.</i>		<i>Turbine duff expansion</i>					
<b>Breaker Open (BO)</b>	10:24 PM	2024/02/17	12:52 PM	2024/02/18				
<b>Draught Group (DG) Shut Down (SD)</b>	<i>DG did not trip or SD</i>	<i>DG did not trip or SD</i>	<i>DG did not trip or SD</i>	<i>DG did not trip or SD</i>				
<b>BO to DG SD (duration)</b>	<i>n/a</i>	DD:HH:MM	<i>n/a</i>	DD:HH:MM		DD:HH:MM		DD:HH:MM
<b>Fires in time</b>								
<b>Synch. to Grid (or BC)</b>								
<b>Fires in to BC (duration)</b>		DD:HH:MM		DD:HH:MM		DD:HH:MM		DD:HH:MM
<b>Emissions below limit from BC (end date)</b>								
<b>Emissions below limit from BC (duration)</b>		DD:HH:MM		DD:HH:MM		DD:HH:MM		DD:HH:MM

<b>Unit No.4</b>	<i>AM: Boiler tube leak repairs</i>		<i>20KV generator circuit breaker blue phase faulty</i>		<i>Boiler tripped while C+I did fault finding on oil burner releases</i>			
<b>Breaker Open (BO)</b>	8:17 AM	2024/02/08	1:03 AM	2024/02/14	6:55 AM	2024/02/23		
<b>Draught Group (DG) Shut Down (SD)</b>	10:27 PM	2024/02/08	2:42 AM	2024/02/14	<i>DG did not trip or SD</i>	<i>DG did not trip or SD</i>		
<b>BO to DG SD (duration)</b>	00:14:10	DD:HH:MM	00:01:39	DD:HH:MM	<i>n/a</i>	DD:HH:MM		DD:HH:MM
<b>Fires in time</b>	1:56 AM	2024/02/12	9:43 PM	2024/02/15	10:12 AM	2024/02/23		
<b>Synch. to Grid (or BC)</b>	3:59 AM	2024/02/12	2:16 AM	2024/02/16	11:57 AM	2024/02/23		
<b>Fires in to BC (duration)</b>	00:02:03	DD:HH:MM	00:04:33	DD:HH:MM	00:01:45	DD:HH:MM		DD:HH:MM
<b>Emissions below limit from BC (end date)</b>	6:00 AM	2024/02/18	6:00 AM	2024/02/18		#REF!		
<b>Emissions below limit from BC (duration)</b>	06:02:01	DD:HH:MM	02:03:44	DD:HH:MM	<i>n/a</i>	DD:HH:MM		DD:HH:MM

<b>Unit No.5</b>	<i>Tripped on vacuum &amp; Boiler tube leak repairs</i>		<i>manual tripped due to main condenser vacuum out of control</i>		<i>Tripped on Vacuum &amp; Cold reheat NRV leak repairs</i>			
<b>Breaker Open (BO)</b>	6:22 PM	2024/02/02	11:29 AM	2024/02/10	4:28 AM	2024/02/27		
<b>Draught Group (DG) Shut Down (SD)</b>	9:29 AM	2024/02/03	DG did not trip or SD	DG did not trip or SD	DG did not trip or SD	DG did not trip or SD		
<b>BO to DG SD (duration)</b>	00:15:07	DD:HH:MM	n/a	DD:HH:MM	n/a	DD:HH:MM		DD:HH:MM
<b>Fires in time</b>	5:03 AM	2024/02/10	1:02 PM	2024/02/10	12:44 PM	2024/02/27		
<b>Synch. to Grid (or BC)</b>	9:40 AM	2024/02/10	3:20 PM	2024/02/10	2:05 PM	2024/02/27		
<b>Fires in to BC (duration)</b>	00:04:37	DD:HH:MM	00:02:18	DD:HH:MM	00:01:21	DD:HH:MM		DD:HH:MM
<b>Emissions below limit from BC (end date)</b>	12:00 AM	2024/02/13	12:00 AM	2024/02/13	4:35 AM	2024/02/27		
<b>Emissions below limit from BC (duration)</b>	02:14:20	DD:HH:MM	02:08:40	DD:HH:MM	#####	DD:HH:MM		DD:HH:MM

<b>Unit No.6</b>	<i>Outage</i>							
<b>Breaker Open (BO)</b>								
<b>Draught Group (DG) Shut Down (SD)</b>								
<b>BO to DG SD (duration)</b>		DD:HH:MM		DD:HH:MM		DD:HH:MM		DD:HH:MM
<b>Fires in time</b>								
<b>Synch. to Grid (or BC)</b>								
<b>Fires in to BC (duration)</b>		DD:HH:MM		DD:HH:MM		DD:HH:MM		DD:HH:MM
<b>Emissions below limit from BC (end date)</b>								
<b>Emissions below limit from BC (duration)</b>		DD:HH:MM		DD:HH:MM		DD:HH:MM		DD:HH:MM

7.2: Point Source emissions released during start-up (fires-in) and Shut-down (SD) for the month of February 2024 in mg/Nm<sup>3</sup>

**8. MAINTENANCE**

<b>Unit 1</b>				
<b>Beginning of</b>				
<b>Reason for Maintenance</b>				
<b>End (Time):</b>				
<b>Duration</b>				

<b>Unit 2</b>				
<b>Beginning of</b>	2024/02/03 23:54:00			
<b>Reason for Maintenance</b>	RHI casing repairs			
<b>End (Time):</b>	2024/02/04 18:22:00			
<b>Duration</b>	18:28:00			

<b>Unit 3</b>				
<b>Beginning of</b>	2024/02/03 00:31:00	2024/02/17 00:00	2024/02/26 16:29	
<b>Reason for Maintenance</b>	LHI casing repairs	RHI casing repairs	LHI casing repairs	
<b>End (Time):</b>	2024/02/03 20:34:00	2024/02/17 17:05	2024/02/26 23:15	
<b>Duration</b>	20:03:00	17:05:00	6:46:00	

<b>Unit 4</b>				
<b>Beginning of</b>	2024/02/24 15:15			
<b>Reason for Maintenance</b>	LHO casing repairs			
<b>End (Time):</b>	2024/02/24 18:17			
<b>Duration</b>	3:02:00			

<b>Unit 5</b>				
<b>Beginning of</b>				
<b>Reason for Maintenance</b>				
<b>End (Time):</b>				
<b>Duration</b>				

<b>Unit 6</b>				
<b>Beginning of</b>				
<b>Reason for Maintenance</b>				
<b>End (Time):</b>				
<b>Duration</b>				

## 9. GENERAL

### **Unit 1 Monitor Reliability**

22/01/2024 : PM Monitor Reliability low due Monitors offline for a number of hours due to no power to the monitors.

### **Unit 2 Monitor Reliability**

27/02/2024 : PM Monitor Reliability low due to monitors reading maximum.

### **Unit 3 Monitor Reliability**

08/02/2024; 18/02/2024; 20/02/2024: PM Monitor Reliability low due to monitors reading maximum.

22/02/2024: PM Monitor Reliability low due Monitors offline for a number of hours due to no power to the monitors.

### **Unit 1, 3, 4 and 5 Gaseous Monitor Reliability**

22/01/2024 : Gas Monitor Reliability low due Monitors offline for a number of hours due to no power to the monitors.

### **CO2 and Velocity Monitors Low Reliability Units 1-6:**

Due to correction of bad data as per internal emission data integrity review actions in 2021 and 2022. Bad Velocity data and Bad CO2 data were corrected/removed as per the review actions and findings.



**ADDENDUM TO MONTHLY EMISSIONS REPORT**

**10. S30 INCIDENT OR LEGAL CONTRAVENTION REGISTER**

To be completed in the case of a S30 incident or a legal contravention:

Unit no	Incident Start Date	Incident End Date	Incident Cause	Remedial action	S30 initial notification sent	Date S30 investigation report sent	Date DEA Acknowledgment	Date DEA Acceptable	Comments / Reference No.

**11. PARTICULATE EMISSIONS**

**EMISSION RATE (ACTUAL EMISSION/MWh GENERATED - kg/MWh)**

MONTH	UNIT 1	UNIT 2	UNIT 3	UNIT 4	UNIT 5	UNIT 6	STATION
<b>Mar-23</b>	0.51	0.37	0.52	0.54	0.63	0.39	0.50
<b>Apr-23</b>	OFF	0.29	0.61	0.35	0.86	OFF	0.56
<b>May-23</b>	OFF	0.48	0.46	0.32	0.79	0.41	0.50
<b>Jun-23</b>	0.13	0.64	0.47	0.30	0.46	0.30	0.36
<b>Jul-23</b>	0.21	0.27	0.42	0.27	0.25	0.32	0.30
<b>Aug-23</b>	0.21	0.60	0.63	0.42	0.42	0.50	0.46
<b>Sep-23</b>	0.26	0.28	0.46	0.41	0.33	0.51	0.37
<b>Oct-23</b>	0.27	0.67	0.68	0.44	0.37	0.42	0.47
<b>Nov-23</b>	0.88	1.81	1.01	0.70	0.55	0.75	0.97
<b>Dec-23</b>	0.56	1.20	0.95	1.24	0.85	0.71	0.90
<b>Jan-24</b>	0.55	1.35	0.92	0.88	0.70	0.78	0.86
<b>Feb-24</b>	0.55	0.81	0.89	0.63	0.48	OFF	0.68

**ADDENDUM TO MONTHLY EMISSIONS REPORT**

**12. DAILY EMISSIONS FIGURES**

**Final Dust Concentration (mg/Nm<sup>3</sup>)**

Date	U1	U2	U3	U4	U5	U6	Limit
30-Jan	45	OFF	95	79	180	OFF	100
31-Jan	45	294	289	70	392	OFF	100
01-Feb	46	328	102	202	92	OFF	100
02-Feb	45	43	93	44	47	OFF	100
03-Feb	45	77	214	55	OFF	OFF	100
04-Feb	45	249	87	74	OFF	OFF	100
05-Feb	50	90	268	110	OFF	OFF	100
06-Feb	60	212	80	92	OFF	OFF	100
07-Feb	56	94	83	256	OFF	OFF	100
08-Feb	61	266	285	47	OFF	OFF	100
09-Feb	30	75	81	OFF	OFF	OFF	100
10-Feb	OFF	130	95	OFF	OFF	OFF	100
11-Feb	OFF	77	220	OFF	197	OFF	100
12-Feb	OFF	78	93	OFF	217	OFF	100
13-Feb	OFF	226	221	160	58	OFF	100
14-Feb	154	60	453	89	48	OFF	100
15-Feb	186	OFF	99	OFF	60	OFF	100
16-Feb	125	OFF	100	OFF	64	OFF	100
17-Feb	70	OFF	310	89	70	OFF	100
18-Feb	143	OFF	489	280	66	OFF	100
19-Feb	69	OFF	82	48	72	OFF	100
20-Feb	164	OFF	332	32	55	OFF	100
21-Feb	213	OFF	87	89	64	OFF	100
22-Feb	38	OFF	194	77	186	OFF	100
23-Feb	53	OFF	273	249	39	OFF	100
24-Feb	202	OFF	86	78	67	OFF	100
25-Feb	101	OFF	249	100	47	OFF	100
26-Feb	177	OFF	216	278	94	OFF	100
27-Feb	67	572	83	51	111	OFF	100
28-Feb	89	89	222	92	64	OFF	100
29-Feb	209	103	75	284	97	OFF	100

**ADDENDUM TO MONTHLY EMISSIONS REPORT**

**Final SOx Concentration (mg/Nm<sup>3</sup>)**

Date	U1	U2	U3	U4	U5	U6	Limit
30-Jan	1645	1744	1897	1819	1784	OFF	3500
31-Jan	1718	1731	1924	1825	1701	OFF	3500
01-Feb	1729	1829	1918	1794	1677	OFF	3500
02-Feb	1651	1666	1731	1609	1645	OFF	3500
03-Feb	1615	1716	1698	1608	OFF	OFF	3500
04-Feb	1587	1713	1745	1623	OFF	OFF	3500
05-Feb	1639	1797	1870	1690	OFF	OFF	3500
06-Feb	1653	1766	1826	1671	OFF	OFF	3500
07-Feb	1628	1856	1869	1730	OFF	OFF	3500
08-Feb	1645	1868	1896	1641	OFF	OFF	3500
09-Feb	1501	1849	1898	OFF	OFF	OFF	3500
10-Feb	OFF	1906	1947	OFF	1757	OFF	3500
11-Feb	OFF	1903	2006	OFF	1803	OFF	3500
12-Feb	OFF	1892	2022	1743	1911	OFF	3500
13-Feb	1640	2050	2052	1806	1960	OFF	3500
14-Feb	1640	1971	2006	1871	1938	OFF	3500
15-Feb	1765	OFF	1939	OFF	1820	OFF	3500
16-Feb	1826	OFF	2046	1887	1920	OFF	3500
17-Feb	1820	OFF	2014	1953	1980	OFF	3500
18-Feb	1781	OFF	1961	1876	1920	OFF	3500
19-Feb	1671	1875	1904	1680	1820	OFF	3500
20-Feb	1712	OFF	1889	1712	1870	OFF	3500
21-Feb	1684	OFF	1884	1727	1885	OFF	3500
22-Feb	1640	OFF	1907	1773	1842	OFF	3500
23-Feb	1676	OFF	1861	1722	1726	OFF	3500
24-Feb	1673	OFF	1889	1677	1830	OFF	3500
25-Feb	1607	OFF	1892	1711	1906	OFF	3500
26-Feb	1667	1818	1940	1821	1943	OFF	3500
27-Feb	1728	1916	1972	1808	1862	OFF	3500
28-Feb	1659	1905	1931	1761	1879	OFF	3500
29-Feb	1634	1855	1835	1692	1780	OFF	3500

**ADDENDUM TO MONTHLY EMISSIONS REPORT**

**Final NOx Concentration (mg/Nm<sup>3</sup>)**

Date	U1	U2	U3	U4	U5	U6	Limit
30-Jan	797	677	709	975	686	OFF	1100
31-Jan	960	730	763	973	731	OFF	1100
01-Feb	906	690	764	968	763	OFF	1100
02-Feb	855	663	760	843	719	OFF	1100
03-Feb	841	676	783	867	OFF	OFF	1100
04-Feb	884	683	754	826	OFF	OFF	1100
05-Feb	828	682	777	827	OFF	OFF	1100
06-Feb	786	721	747	919	OFF	OFF	1100
07-Feb	1004	698	683	896	OFF	OFF	1100
08-Feb	964	712	715	632	OFF	OFF	1100
09-Feb	887	643	708	OFF	OFF	OFF	1100
10-Feb	OFF	695	711	OFF	600	OFF	1100
11-Feb	OFF	703	770	OFF	784	OFF	1100
12-Feb	OFF	696	703	771	821	OFF	1100
13-Feb	708	701	818	839	814	OFF	1100
14-Feb	961	647	797	420	786	OFF	1100
15-Feb	935	OFF	683	OFF	751	OFF	1100
16-Feb	870	OFF	688	775	781	OFF	1100
17-Feb	925	OFF	769	833	745	OFF	1100
18-Feb	957	OFF	691	773	771	OFF	1100
19-Feb	959	420	683	762	740	OFF	1100
20-Feb	884	OFF	761	600	714	OFF	1100
21-Feb	948	OFF	672	665	681	OFF	1100
22-Feb	829	OFF	809	689	754	OFF	1100
23-Feb	816	OFF	820	703	722	OFF	1100
24-Feb	839	OFF	709	790	703	OFF	1100
25-Feb	847	OFF	694	783	682	OFF	1100
26-Feb	815	529	683	763	749	OFF	1100
27-Feb	825	619	704	653	775	OFF	1100
28-Feb	840	498	798	623	757	OFF	1100
29-Feb	742	565	724	651	813	OFF	1100

**ADDENDUM TO MONTHLY EMISSIONS REPORT**

**13. AVAILABILITY**

ESP utilisation

Availability												
Month	Unit 1	Days Affected	Unit 2	Days Affected	Unit 3	Days Affected	Unit 4	Days Affected	Unit 5	Days Affected	Unit 6	Days Affected
Mar-23	99.30%	0.9	99.19%	1.0	99.22%	1.0	100.00%	0.0	98.57%	1.8	99.19%	1.0
Apr-23	OFF	OFF	100.00%	0.0	97.91%	2.5	100.00%	0.0	99.24%	0.9	OFF	OFF
May-23	OFF	OFF	98.56%	1.8	99.36%	0.8	100.00%	0.0	96.91%	3.8	100.00%	0.0
Jun-23	100.00%	0.0	100.00%	0.0	99.41%	0.7	98.31%	2.0	98.52%	1.8	100.00%	0.0
Jul-23	100.00%	0.0	100.00%	0.0	99.19%	1.0	100.00%	0.0	100.00%	0.0	99.22%	1.0
Aug-23	100.00%	0.0	100.00%	0.0	98.46%	1.9	100.00%	0.0	99.23%	1.0	99.12%	1.1
Sep-23	99.17%	1.0	100.00%	0.0	98.51%	1.8	100.00%	0.0	98.34%	2.0	99.17%	1.0
Oct-23	99.98%	0.0	96.81%	4.0	98.31%	2.1	100.00%	0.0	99.34%	0.8	99.30%	0.9
Nov-23	97.53%	2.96	97.57%	2.92	99.17%	1.00	100.00%	0.00	100.00%	0.00	99.71%	0.35
Dec-23	100.00%	0.0	97.95%	2.5	100.00%	0.0	98.62%	1.7	98.03%	2.4	97.91%	2.6
Jan-24	97.90%	2.6	98.73%	1.6	100.00%	0.0	100.00%	0.0	99.32%	0.8	100.00%	0.0
Feb-24	100.00%	0.0	99.34%	0.8	98.42%	1.8	99.89%	0.1	100.00%	0.0	Off-line	Off-line

SO<sub>3</sub> plant utilisation

Availability												
Month	Unit 1	Days Affected	Unit 2	Days Affected	Unit 3	Days Affected	Unit 4	Days Affected	Unit 5	Days Affected	Unit 6	Days Affected
Mar-23	100.00%	0.0	98.89%	0.3	95.16%	1.5	95.50%	1.4	99.33%	0.2	95.00%	1.6
Apr-23	OFF	OFF	99.66%	0.1	100.00%	0.0	98.93%	0.3	94.58%	1.6	OFF	OFF
May-23	OFF	OFF	100.00%	0.0	99.89%	0.0	99.33%	0.2	100.00%	0.0	90.67%	2.9
Jun-23	85.96%	4.2	81.82%	5.5	96.56%	1.0	97.86%	0.6	86.81%	4.0	97.50%	0.8
Jul-23	97.98%	0.6	97.83%	0.7	100.00%	0.0	97.85%	0.7	99.67%	0.1	100.00%	0.0
Aug-23	99.33%	0.2	95.61%	1.4	100.00%	0.0	97.47%	0.8	100.00%	0.0	100.00%	0.0
Sep-23	100.00%	0.0	98.19%	0.5	98.75%	0.4	99.72%	0.1	99.58%	0.1	95.83%	1.3
Oct-23	99.73%	0.1	100.00%	0.0	96.91%	1.0	100.00%	0.0	100.00%	0.0	97.27%	0.8
Nov-23	95.14%	1.5	94.17%	1.8	83.89%	4.8	86.14%	4.2	89.17%	3.3	94.62%	1.6
Dec-23	92.47%	2.3	97.67%	0.7	81.25%	5.8	84.48%	4.8	93.82%	1.9	85.62%	4.5
Jan-24	95.73%	1.3	90.43%	3.0	69.76%	9.4	91.80%	2.5	89.78%	3.2	95.24%	1.5
Feb-24	99.92%	0.0	87.56%	3.6	98.85%	0.3	95.65%	1.3	88.10%	3.5	Off-line	Off-line

**ADDENDUM TO MONTHLY EMISSIONS REPORT**

Particulate Emission Monitors

Availability						
	Unit 1	Unit 2	Unit 3	Unit 4	Unit 5	Unit 6
Mar-23	99.68%	98.75%	99.06%	97.17%	97.33%	99.12%
Apr-23	OFF	99.43%	98.61%	99.57%	94.31%	OFF
May-23	OFF	97.07%	99.85%	99.46%	95.56%	99.50%
Jun-23	99.23%	95.11%	99.19%	98.33%	99.03%	99.86%
Jul-23	98.92%	100.00%	99.60%	99.73%	98.33%	99.87%
Aug-23	99.73%	92.28%	99.22%	98.85%	97.85%	98.79%
Sep-23	99.44%	98.61%	98.89%	99.03%	97.99%	97.98%
Oct-23	100.00%	96.51%	99.33%	99.73%	98.66%	99.69%
Nov-23	92.92%	86.39%	94.86%	98.60%	97.64%	96.16%
Dec-23	98.12%	92.68%	95.74%	90.32%	95.03%	97.85%
Jan-24	98.28%	85.65%	94.35%	90.76%	92.88%	97.82%
Feb-24	96.67%	93.82%	93.39%	96.10%	98.81%	OFF

## Gaseous Emission Monitors

Availability												
	Unit 1		Unit 2		Unit 3		Unit 4		Unit 5		Unit 6	
Month	SO <sub>x</sub>	NO <sub>x</sub>	SO <sub>x</sub>	NO <sub>x</sub>	SO <sub>x</sub>	NO <sub>x</sub>	SO <sub>x</sub>	NO <sub>x</sub>	SO <sub>x</sub>	NO <sub>x</sub>	SO <sub>x</sub>	NO <sub>x</sub>
Mar-23	100.00%	100.00%	100.00%	100.00%	99.87%	100.00%	100.00%	100.00%	100.00%	100.00%	100.00%	100.00%
Apr-23	OFF	OFF	100.00%	100.00%	99.86%	99.86%	99.95%	99.95%	100.00%	100.00%	OFF	OFF
May-23	OFF	OFF	100.00%	100.00%	100.00%	100.00%	99.60%	99.87%	99.73%	99.87%	99.52%	99.68%
Jun-23	99.70%	99.85%	99.58%	100.00%	99.71%	100.00%	100.00%	100.00%	100.00%	100.00%	99.86%	100.00%
Jul-23	98.39%	98.39%	98.08%	97.95%	98.12%	98.39%	98.39%	98.25%	97.92%	97.92%	98.25%	98.39%
Aug-23	100.00%	100.00%	99.83%	99.83%	100.00%	100.00%	99.86%	100.00%	100.00%	100.00%	100.00%	100.00%
Sep-23	100.00%	100.00%	100.00%	100.00%	100.00%	100.00%	100.00%	100.00%	100.00%	100.00%	99.85%	99.85%
Oct-23	99.46%	99.46%	99.33%	99.46%	99.19%	99.19%	99.46%	99.46%	99.33%	99.46%	99.40%	99.40%
Nov-23	100.00%	100.00%	99.72%	99.86%	99.86%	100.00%	100.00%	100.00%	100.00%	100.00%	100.00%	99.73%
Dec-23	100.00%	100.00%	100.00%	100.00%	100.00%	98.95%	100.00%	100.00%	100.00%	100.00%	100.00%	100.00%
Jan-24	100.00%	100.00%	100.00%	100.00%	100.00%	100.00%	100.00%	100.00%	99.87%	100.00%	100.00%	100.00%
Feb-24	98.08%	98.08%	99.78%	98.95%	98.28%	98.28%	97.83%	97.83%	97.73%	97.73%	OFF	OFF

Oxygen Monitor Availability						
	Unit 1	Unit 2	Unit 3	Unit 4	Unit 5	Unit 6
Mar-23	100.00%	100.00%	100.00%	86.16%	99.87%	99.81%
Apr-23	OFF	99.83%	99.86%	99.83%	99.86%	OFF
May-23	OFF	100.00%	100.00%	100.00%	99.87%	99.84%
Jun-23	100.00%	99.55%	99.86%	99.68%	100.00%	100.00%
Jul-23	98.12%	97.76%	98.12%	98.25%	100.00%	97.72%
Aug-23	100.00%	99.83%	99.87%	100.00%	100.00%	99.60%
Sep-23	100.00%	100.00%	100.00%	100.00%	100.00%	100.00%
Oct-23	99.33%	99.06%	99.19%	99.33%	99.33%	99.40%
Nov-23	99.86%	99.72%	99.86%	100.00%	100.00%	99.58%
Dec-23	100.00%	99.83%	99.81%	99.72%	99.73%	99.46%
Jan-24	99.87%	99.86%	100.00%	100.00%	100.00%	98.10%
Feb-24	97.92%	99.78%	97.84%	97.67%	97.54%	OFF

### ADDENDUM TO MONTHLY EMISSIONS REPORT

#### 14. EFFICIENCY

ESP Efficiency (%)						
	Unit 1	Unit 2	Unit 3	Unit 4	Unit 5	Unit 6
Mar-23	99.797%	99.858%	99.780%	99.780%	99.745%	99.831%
Apr-23	OFF	99.893%	99.731%	99.854%	99.646%	OFF
May-23	OFF	99.812%	99.802%	99.868%	99.667%	99.822%
Jun-23	99.948%	99.717%	99.787%	99.864%	99.796%	99.858%
Jul-23	99.904%	99.864%	99.793%	99.869%	99.879%	99.837%
Aug-23	99.912%	99.715%	99.715%	99.816%	99.818%	99.770%
Sep-23	99.895%	99.867%	99.793%	99.825%	99.860%	99.766%
Oct-23	99.904%	99.728%	99.730%	99.825%	99.855%	99.829%
Nov-23	99.700%	99.307%	99.626%	99.756%	99.790%	99.705%
Dec-23	99.762%	99.426%	99.561%	99.418%	99.614%	99.667%
Jan-24	99.825%	99.503%	99.670%	99.690%	99.756%	99.721%
Feb-24	99.834%	99.719%	99.697%	99.788%	99.835%	Unit Off-line

15. REMARKS

UNIT	MWLOSS	REASON	ACTUALSTARTDATE	ACTUALENDDATE
1	150	AM: Dust plant standing - high hopper levels	2024/02/06 01:33:00	2024/02/06 16:58:00
1	593	Boiler tube leak	2024/02/09 20:17:00	2024/02/13 20:38:00
1	297	System Generated Ramp Event for Event id : 1901829	2024/02/13 20:38:00	2024/02/13 23:38:00
1	128	High Stack emissions	2024/02/16 00:37:00	2024/02/16 07:10:00
1	30	AM: High stack emissions.	2024/02/16 07:10:00	2024/02/16 08:19:00
1	130	EF: High stack emissions	2024/02/16 08:19:00	2024/02/16 10:55:00
1	130	High stack emissions.	2024/02/16 19:28:00	2024/02/17 11:56:00
1	80	EF: High stack emissions	2024/02/17 11:56:00	2024/02/17 13:43:00
1	98	High stack emissions	2024/02/22 00:51:00	2024/02/22 15:19:00
1	98	hiGH STACK EMISSIONS	2024/02/23 00:41:00	2024/02/23 05:06:00
1	100	High stack emissions	2024/02/26 03:23:00	2024/02/26 14:25:00
1	95	EF: High stack emissions	2024/02/27 00:12:00	2024/02/27 08:30:00
1	99	EF:High stack emissions	2024/02/27 11:42:00	2024/02/27 17:07:00
1	50	EF:High stack emissions	2024/02/28 10:30:00	2024/02/28 13:09:00
1	100	EF:High stack emissions	2024/02/28 15:37:00	2024/02/28 16:48:00
1	96	EF: High stack emissions	2024/02/28 19:47:00	2024/02/29 01:06:00
2	45	EF: High stack emissions	2024/02/01 22:32:00	2024/02/02 00:05:00
2	147	EF: High stack emissions	2024/02/02 00:05:00	2024/02/02 10:12:00
2	48	RH inner casing repairs	2024/02/03 23:54:00	2024/02/04 18:22:00
2	44	EF: High stack emissions	2024/02/06 13:48:00	2024/02/06 15:59:00
2	45	EF: High stack emissions	2024/02/07 13:00:00	2024/02/07 16:49:00
2	49	EF: High stack emissions	2024/02/07 20:20:00	2024/02/08 00:11:00
2	47	EF: High stack emissions	2024/02/09 08:32:00	2024/02/09 16:23:00
2	593	Boiler Tube leak.	2024/02/14 10:11:00	2024/02/19 06:19:00
2	297	System Generated Ramp Event for Event id : 1903173	2024/02/19 06:19:00	2024/02/19 09:19:00
2	593	Manual trip due to boiler tube leak	2024/02/19 15:49:00	2024/02/19 15:51:00
2	593	AM: Boiler tube leak.	2024/02/19 15:51:00	2024/02/26 00:22:00
2	297	System Generated Ramp Event for Event id : 1905143 First Outage	2024/02/26 00:22:00	2024/02/26 01:52:00
2	297	System Generated Ramp Event for Event id : 1904593	2024/02/26 01:52:00	2024/02/26 03:22:00
2	593	Unit tripped on main turbine FRF pressure low.	2024/02/26 04:22:00	2024/02/26 09:08:00
2	297	System Generated Ramp Event for Event id : 1906421	2024/02/26 09:08:00	2024/02/26 10:38:00
2	195	EF: High stack emissions	2024/02/28 00:17:00	2024/02/29 07:23:00
2	175	EF: High stack emissions	2024/02/29 19:48:00	2024/02/29 23:59:59
3	47	High stack emissions	2024/02/01 14:01:00	2024/02/01 16:20:00
3	97	EF: High stack emissions	2024/02/01 19:53:00	2024/02/02 08:45:00
3	51	EF: High stack emissions	2024/02/02 08:45:00	2024/02/02 13:15:00
3	96	High stack emissions	2024/02/02 13:15:00	2024/02/03 00:31:00
3	80	LH inner pricip casing repairs	2024/02/03 00:31:00	2024/02/03 20:34:00
3	46	High stack emissions	2024/02/04 14:05:00	2024/02/04 17:12:00
3	52	High stack emissions	2024/02/04 17:12:00	2024/02/05 02:10:00
3	170	EF: High stack emissions.	2024/02/06 09:26:00	2024/02/07 05:25:00
3	55	EF: High stack emissions	2024/02/10 20:23:00	2024/02/11 04:20:00
3	176	EF: High stack emissions	2024/02/11 23:02:00	2024/02/12 05:26:00
3	130	EF: High stack emissions	2024/02/12 05:26:00	2024/02/12 17:22:00
3	178	EF: High stack emissions	2024/02/12 22:43:00	2024/02/13 05:01:00
3	56	EF: High stack emissions	2024/02/14 22:24:00	2024/02/15 01:52:00
3	105	EF: High stack emissions	2024/02/15 01:52:00	2024/02/15 08:00:00
3	155	High stack emissions.	2024/02/15 08:00:00	2024/02/15 16:04:00
3	105	EF: High stack emissions	2024/02/15 16:04:00	2024/02/15 19:29:00
3	130	EF: High stack emissions	2024/02/15 19:29:00	2024/02/15 21:49:00

UNIT	MWLOSS	REASON	ACTUALSTARTDATE	ACTUALENDDATE
3	155	High stack emissions	2024/02/15 21:49:00	2024/02/16 07:18:00
3	100	AM: High stack emissions.	2024/02/16 07:18:00	2024/02/16 09:38:00
3	160	EF: High stack emissions	2024/02/16 09:38:00	2024/02/16 19:32:00
3	167	High stack emissions.	2024/02/16 19:32:00	2024/02/17 00:00:00
3	58	RHI precip casing repairs	2024/02/17 00:00:00	2024/02/17 17:05:00
3	109	High stack emissions.	2024/02/17 00:00:00	2024/02/17 01:30:00
3	593	Turbine diff expansion.	2024/02/17 22:24:00	2024/02/18 01:13:00
3	297	System Generated Ramp Event for Event id : 1904160	2024/02/18 01:13:00	2024/02/18 02:43:00
3	28	High stack emissions.	2024/02/18 04:15:00	2024/02/18 08:49:00
3	128	EF: High stack emissions	2024/02/18 08:49:00	2024/02/18 12:52:00
3	593	Turbine duff expansion	2024/02/18 12:52:00	2024/02/18 17:04:00
3	297	System Generated Ramp Event for Event id : 1904297	2024/02/18 17:04:00	2024/02/18 18:34:00
3	217	EF: High stack emissions	2024/02/18 18:34:00	2024/02/19 01:08:00
3	148	High stack emissions.	2024/02/19 01:08:00	2024/02/19 04:52:00
3	216	High stack emissions	2024/02/19 04:52:00	2024/02/20 02:22:00
3	170	High stack emissions	2024/02/20 20:10:00	2024/02/21 06:39:00
3	76	High stack emissions.	2024/02/21 08:19:00	2024/02/21 10:46:00
3	178	High stack emissions	2024/02/21 10:46:00	2024/02/22 00:59:00
3	80	High stack emissions	2024/02/22 00:59:00	2024/02/22 01:48:00
3	175	High stack emissions.	2024/02/24 00:19:00	2024/02/26 16:29:00
3	80	LHI precip casing repairs.	2024/02/26 16:29:00	2024/02/26 23:15:00
3	178	EF: High stack emissions	2024/02/26 23:59:00	2024/02/27 08:13:00
3	80	EF:High stack emissions.	2024/02/27 08:13:00	2024/02/27 10:29:00
3	99	EF:High stack emissions	2024/02/27 10:29:00	2024/02/27 17:07:00
3	81	Dust plant standing	2024/02/27 15:45:00	2024/02/27 17:07:00
3	80	EF:High stack emissions	2024/02/27 17:07:00	2024/02/28 05:11:00
3	178	AM: High stack emissions.	2024/02/29 00:44:00	2024/02/29 00:57:00
3	157	AM: High stack emissions.	2024/02/29 00:57:00	2024/02/29 04:47:00
3	79	AM: High stack emissions.	2024/02/29 04:47:00	2024/02/29 23:40:00
4	593	AM: Boiler tube leak repairs	2024/02/08 08:17:00	2024/02/12 03:59:00
4	297	System Generated Ramp Event for Event id : 1901394	2024/02/12 03:59:00	2024/02/12 06:59:00
4	593	20KV generator circuit breaker blue phase faulty	2024/02/14 01:03:00	2024/02/16 02:16:00
4	297	System Generated Ramp Event for Event id : 1903107	2024/02/16 02:16:00	2024/02/16 05:16:00
4	176	Dust plant standing	2024/02/19 22:19:00	2024/02/21 05:59:00
4	593	Boiler tripped while C+I did fault finding on oil burner releases	2024/02/23 06:55:00	2024/02/23 11:57:00
4	297	System Generated Ramp Event for Event id : 1905642	2024/02/23 11:57:00	2024/02/23 13:27:00
4	80	LHO precip casing repairs.	2024/02/24 15:15:00	2024/02/24 18:17:00
4	122	EF: High stack emissions	2024/02/26 23:59:00	2024/02/27 05:10:00
4	70	EF: High stack emissions	2024/02/27 05:10:00	2024/02/27 06:51:00
4	20	EF:High stack emissions	2024/02/27 06:51:00	2024/02/27 07:47:00
4	76	EF: High stack emissions	2024/02/28 19:48:00	2024/02/29 05:59:00
4	30	EF: High stack emissions	2024/02/29 05:59:00	2024/02/29 08:23:00
5	593	Tripped on vacuum	2024/02/02 18:22:00	2024/02/02 19:17:00
5	593	Boiler tube leak repairs	2024/02/02 19:17:00	2024/02/06 19:16:00
5	593	System Generated Slip Event linked to PCLF Event : 1899500	2024/02/06 19:16:00	2024/02/10 09:40:00
5	445	System Generated Ramp Event for Event id : 1899486 First Outage	2024/02/10 09:40:00	2024/02/10 10:40:00
5	373	System Generated Ramp Event for Event id : 1899500 (Recalculated)	2024/02/10 10:40:00	2024/02/10 11:29:00
5	593	manual tripped due to main condenser vacuum out of control	2024/02/10 11:29:00	2024/02/10 15:20:00
5	297	System Generated Ramp Event for Event id : 1901969	2024/02/10 15:20:00	2024/02/10 16:50:00
5	158	EF:Correlation test	2024/02/19 22:46:00	2024/02/20 05:13:00
5	38	EF: High stack emissions	2024/02/26 19:46:00	2024/02/27 04:28:00
5	593	Tripped on Vacuum	2024/02/27 04:28:00	2024/02/27 12:10:00
5	593	Cold reheat NRV leak repairs	2024/02/27 12:10:00	2024/02/27 14:05:00
5	297	System Generated Ramp Event for Event id : 1906754 First Outage	2024/02/27 14:05:00	2024/02/27 15:35:00
5	296	System Generated Ramp Event for Event id : 1906875	2024/02/27 15:35:00	2024/02/27 16:35:00
5	39	EF: High stack emissions	2024/02/29 20:06:00	2024/02/29 23:59:59
6	593	Outage	2024/02/01 00:00:00	2024/02/29 23:59:59



PM Exceedances		
U1.	The unit synchronised on 2024/02/13 @ 20:38, therefore the emissions need to be below the limit by 2024/02/16 @ 20:38 and remain below the limit until 2024/02/17 @ 23:59	13-Feb
U1.	Unit Light Up	14-Feb
U1.	Unit Light Up	15-Feb
U1.	Unit Light Up	16-Feb
U1.	Manual Rapping	18-Feb
U1.	Monitor Maxed out during clean rapping ESP Poor Performance	20-Feb
U1.	ESP Poor Performance Clean Rapping brought forward	21-Feb
U1.	RHI Casing Outage	24-Feb
U1.	High Hopper Levels Monitor maxed out during clean rapping	25-Feb
U1.	ESP Poor Performance	26-Feb
U1.	RHI Casing Outage	29-Feb
U2.	Unit Light Up	01-Feb
U2.	Casing Outage	04-Feb
U2.	ESP Poor Performance and Manual Rapping	06-Feb
U2.	ESP Poor Performance and Manual Rapping	08-Feb
U2.	Manual Rapping	13-Feb
U2.	Unit Shut Down for Boiler Tube Leak	14-Feb
U2.	The unit synchronised on 2024/02/26 @ 00:22, therefore the emissions need to be below the limit by 2024/02/29 @ 00:22 and remain below the limit until atleast 2024/03/01 @ 23:59	26-Feb
U2.	Unit Light Up	27-Feb
U2.	ESP Poor Performance	29-Feb
U3.	ESP Poor Performance	01-Feb
U3.	Casing Outage	03-Feb
U3.	ESP Poor Performance and Manual Rapping	05-Feb
U3.	ESP Poor Performance SO3 plant off for blower replacement	08-Feb

PM Exceedances		
U3.	ESP Poor Performance and Manual Rapping	11-Feb
	SO3 plant sulphur flow was reduced to 10 kg/hr and increased again this morning to 48 as the burner was suspected to flooded and had to burn of sulphur.	13-Feb
U3.	Manual Rapping	
U3.	Manual Rapping	14-Feb
U3.	Turbin tripped, boiler on load	17-Feb
	Turbine tripped boiler on load	
U3.	LHI Casing Outage	18-Feb
	SO3 plant challenges	
U3.	ESP Poor Performance	20-Feb
	SO3 plant challenges	
U3.	ESP Poor Performance	22-Feb
U3.	Clean Rapping Brought Forward	23-Feb
	ESP Poor Performance	
U3.	Manual Rapping	25-Feb
U3.	LHI Casing Outage	26-Feb
	ESP Poor Performance	
U3.	Manual Rapping	28-Feb
U4.	ESP Poor Performance and manual rapping	01-Feb
	ESP Poor Performance	
	High Hopper Levles	
U4.	SO3 Plant no flow due to sulphur control valve failed	05-Feb
U4.	ESP Poor Performance and Manual Rapping	07-Feb
U4.	The unit synchronised on 2024/02/12 @ 03:58, therefore the emissions need to be below the limit by 2024/02/15 @ 03:58 and remain below the limit until 2024/02/16 @ 23:59	12-Feb
U4.	Unit Light Up	13-Feb
U4.	Unit was shut down this morning for 20kV breaker repairs	14-Feb
U4.	Unit synchronised on load 2024/02/16 02:16	16-Feb
	DHP challenges (only one stream)	
	High Hopper Levels	
U4.	ESP Poor Performance	18-Feb
U4.	Unit Trip 07:25	23-Feb

PM Exceedances		
U4.	ESP Poor Performance	26-Feb
U4.	ESP Poor Performance and Manual Rapping	29-Feb
U5.	The unit synchronised on 2024/02/10 @ 09:40, therefore the emissions need to be below the limit by 2024/02/13 @ 09:40 and remain below the limit until 2024/02/16 @ 23:59	10-Feb
U5.	Unit Light Up	11-Feb
U5.	Unit Light Up	12-Feb
U5.	Manual Rapping SO3 plant challenges	22-Feb
U5.	The unit synchronised on 2024/02/27 @ 14:05, therefore the emissions need to be below the limit by 2024/03/01 @ 14:05 and remain below the limit until atleast 2024/03/02 @ 23:59	27-Feb