



Mr. Mcebo Mkhathshwa
Air Quality Officer
Fezile Dabi District Municipality
P.O Box 10
Sasolburg
1947

Date: 18 March 2026

Enquiries:
S Xulu
Tel +27 16 457 5947

LRP01PLA000_0479/2025/09/12

Dear Mr. Mkhathshwa

LETHABO POWER STATION EMISSION MONTHLY REPORT FOR AUGUST 2025

Please find attached Lethabo Power Station emission report for the month of August 2025.

Also attached are the Ambient Air Quality Monitoring Report, Complaints Register and the Fugitive Dust Fallout Monitoring Report for August 2025.

For any additional information please do not hesitate to contact us.

Yours sincerely

Karabo Rakgolela
ppGENERAL MANAGER

Generation Division
Lethabo Power Station
Viljoensdrif / Deneysville Free State
Private Bag X415 Vereeniging 1930 SA
Tel +27 16 457 5111 Fax +27 16 457 5712 www.eskom.co.za
Eskom Holdings SOC Ltd Reg No 2002/015527/30

Report name: **Lethabo Power Station
AUGUST 2025
Emission Report**

Reference number: **LRP01PLA000_0479/2025/09/12**
Document Type: **Report**
Area of Applicability: **Environment**
Report Date: **September-2025**
Classification: **Controlled Disclosure**

Signatures:

Compiled by:



S Zulu
Boiler Engineer

Date: 18/03/2026

Verified by :



S Xulu
Environmental Officer

Date: 2026/03/18

Reviewed by:



Govinden
BPE Manager

Date: 2026/03/20

Reviewed by:



P Malinga
PE Manager

Date: 2026/03/23


Reviewed by:



L Nel
C&I Manager

Date: 2026-03-23

Reviewed by:



M Hariram
Environmental Manager

Date: 2026/03/24

Approved by:



H Sewsunker
Technical Manager

Date: 2026-03-31

Reviewed by:



T. Njaha
Engineering Manager

Date: 2026-03-27

CONTROLLED DISCLOSURE

When downloaded from the database, this document is uncontrolled and it is the responsibility of the user to ensure that it is the same as the authorised revision on the data base

Copyright © 2008, Eskom Generation, Lethabo Power Station

LETHABO POWER STATION MONTHLY EMISSIONS REPORT

Atmospheric Emission License: FDDM-MET-2011-08-P1



1 RAW MATERIALS AND PRODUCTS

Raw Materials and Products	Raw Material Type	Units	Max Permitted Consumption Rate	Consumption Rate Aug-2025
	Coal	Tons	2 000 000	1 172 162
Fuel Oil	Tons	1 700	1681.360	

Production Rates	Product / By-Product Name	Units	Max Production Capacity Permitted	Indicative Production Rate Aug-2025
	Energy	GWh	2 834.640	1 632.137
Ash	Tons	770 000	428 190.640	
RE Ash	kg/MWh	not specified	0.552	

Note: Max energy rate = AEL capacity [3,810 MW] × 24 Hrs × Days in MONTH ÷ 1,000 (to convert to GWh).

2 ENERGY SOURCE CHARACTERISTICS

Coal Characteristic	Units	Stipulated Range	Monthly Average Content
CV Content			
Sulphur Content	%	0.6 TO >2.6	0.770
Ash Content	%	21 TO <46	36.530

Note: The "standard" is not a fixed limit but an optimal guideline. It may vary with coal quality. The stipulated range reflects station acceptance test values.

3 EMISSION LIMITS (mg/Nm³)

Associated Unit/Stack	Daily Limit		
	PM	SO ₂	NO _x
Unit 1	100	2600	1100
Unit 2	100	2600	1100
Unit 3	100	2600	1100
Unit 4	100	2600	1100
Unit 5	100	2600	1100
Unit 6	50	2600	1100

4 ABATEMENT TECHNOLOGY (%)

Associated Unit/Stack	Technology Type	ESP Efficiency	Technology Type	SO ₃ Plant Utilization
Unit 1	ESP + SO ₃	99.832%	SO ₃	99.7%
Unit 2	ESP + SO ₃	Off-line	SO ₃	Off-line
Unit 3	ESP + SO ₃	99.845%	SO ₃	96.4%
Unit 4	ESP + SO ₃	99.823%	SO ₃	98.9%
Unit 5	ESP + SO ₃	99.678%	SO ₃	99.9%
Unit 6	ESP + SO ₃	99.622%	SO ₃	98.1%

Note: The ESP plant does not have a bypass mode; therefore, it operates at 100% utilization.

5 DATA RELIABILITY (%)

Associated Unit/Stack	PM	SO ₂	NO	O ₂
Unit 1	99.9	100.0	80.9	79.4
Unit 2	Exempt	100.0	98.0	100.0
Unit 3	96.3	93.6	85.4	85.4
Unit 4	99.8	84.9	84.9	84.7
Unit 5	99.5	94.2	86.2	86.1
Unit 6	99.2	76.0	93.9	93.6

Note: NO_x emissions are measured as NO in PPM. The final NO_x value is expressed as total NO₂ equivalent.

6 EMISSION PERFORMANCE

Table 6.1: Monthly tonnages for August 2025

Associated Unit/Stack	PM (tons)	SO ₂ (tons)	NO _x (tons)
Unit 1	157.9	3 922	2 108
Unit 2	Exempt	45	11
Unit 3	127.5	4 363	1 715
Unit 4	99.0	3 122	1 312
Unit 5	259.5	5 091	1 551
Unit 6	256.6	4 206	2 124
SUM	900.49	20 749	8 821

Table 6.2: PM AEL Daily Compliance - August 2025

Associated Unit/Stack	Normal	Grace	Section 30	NC	Total Exceedance	Mnth Avg (mg/Nm ³)
Unit 1	28	3	0	0	3	73.2
Unit 2	Exempt	Exempt	Exempt	Exempt	Exempt	Exempt
Unit 3	25	4	0	0	4	82.0
Unit 4	17	3	0	0	3	77.6
Unit 5	22	9	0	0	9	113.2
Unit 6	28	2	0	0	2	146.7
SUM	120	21	0	0	21	

Table 6.3: SO₂ AEL Daily Compliance - August 2025

Associated Unit/Stack	Normal	Grace	Section 30	NC	Total Exceedance	Mnth Avg (mg/Nm ³)
Unit 1	31	0	0	0	0	1 760.7
Unit 2	2	0	0	0	0	1 564.3
Unit 3	30	0	0	0	0	2 120.2
Unit 4	23	0	0	0	0	2 247.4
Unit 5	31	0	0	0	0	2 200.9
Unit 6	31	0	0	0	0	1 926.2
SUM	148	0	0	0	0	

Table 6.4: NO_x AEL Daily Compliance - August 2025

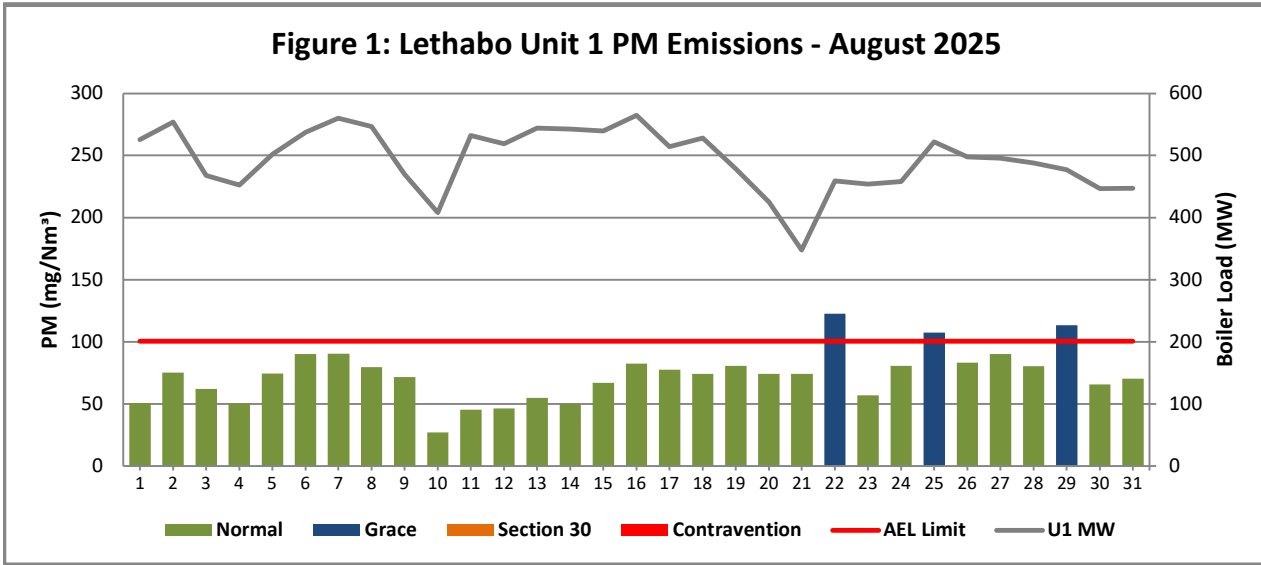
Associated Unit/Stack	Normal	Grace	Section 30	NC	Total Exceedance	Mnth Avg (mg/Nm ³)
Unit 1	31	0	0	0	0	941.5
Unit 2	2	0	0	0	0	416.1
Unit 3	30	0	0	0	0	812.5
Unit 4	23	0	0	0	0	928.0
Unit 5	31	0	0	0	0	666.5
Unit 6	31	0	0	0	0	967.5
SUM	148	0	0	0	0	

Note: Daily limit compliance is shown in the bar charts; monthly compliance is summarized in the table above.

Table 6.5: Legend Description

Condition	Colour	Description
Normal	GREEN	Emissions below Emission Limit Value (ELV)
Grace	BLUE	Emissions above the ELV during grace period
Section 30	ORANGE	Emissions above ELV during a NEMA S30 incident
Contravention	RED	Emissions above ELV but outside grace or S30 incident conditions

Figure 1: Lethabo Unit 1 PM Emissions - August 2025



Reasons:	
Date	Description
22-Aug	Unit 1 tripped.Poor ESP casings performance.
25-Aug	Poor ESP casing performance.High hopper levels.
29-Aug	Poor performance casings.LHI casing outage.

Figure 2: Lethabo Unit 2 PM Emissions - August 2025

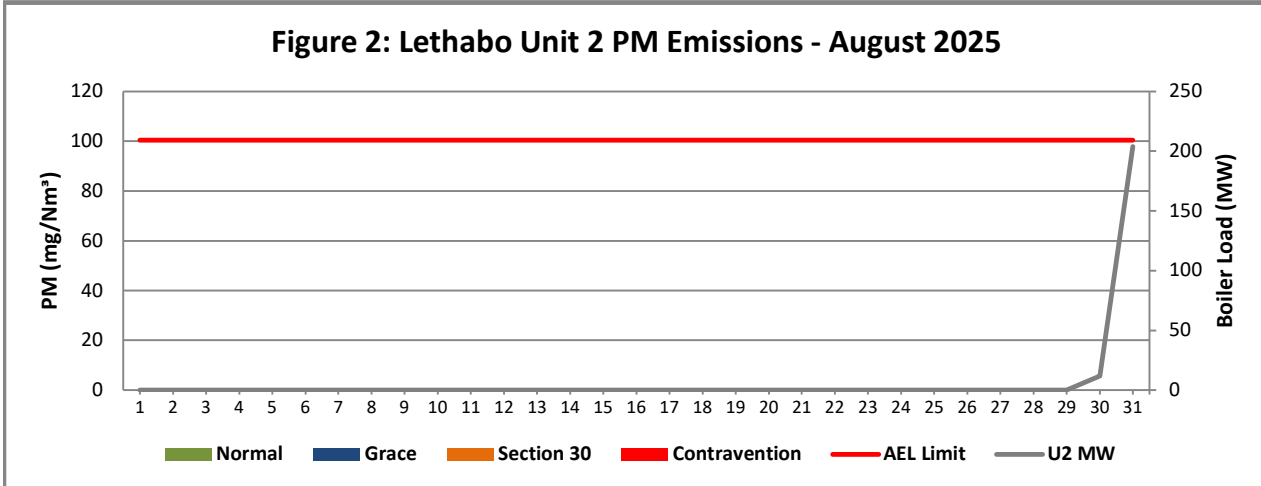
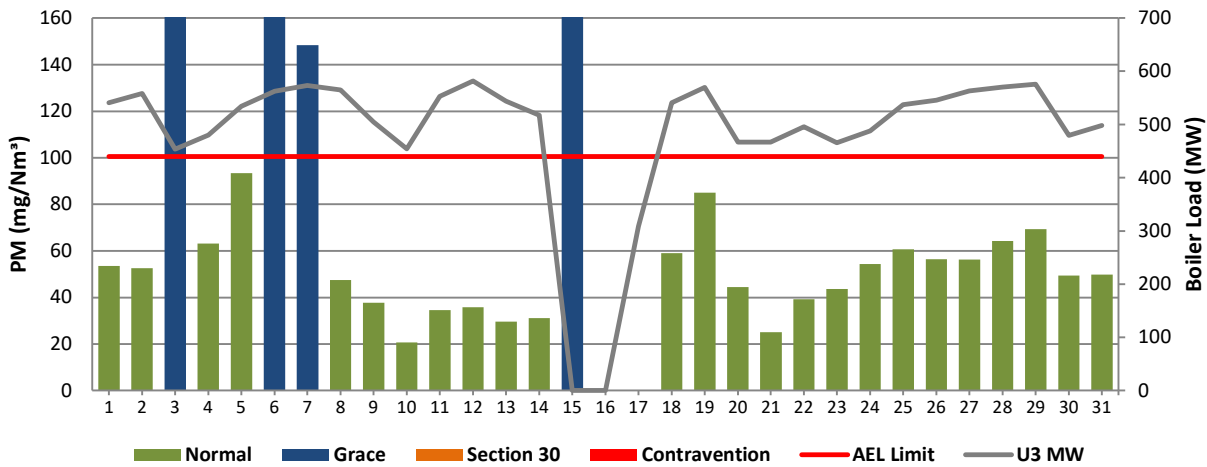
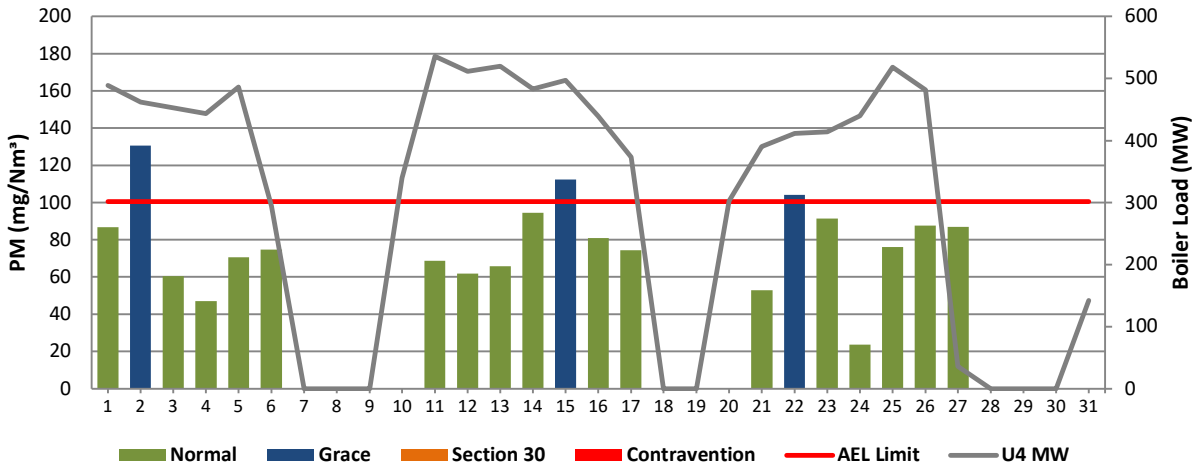


Figure 3: Lethabo Unit 3 PM Emissions - August 2025



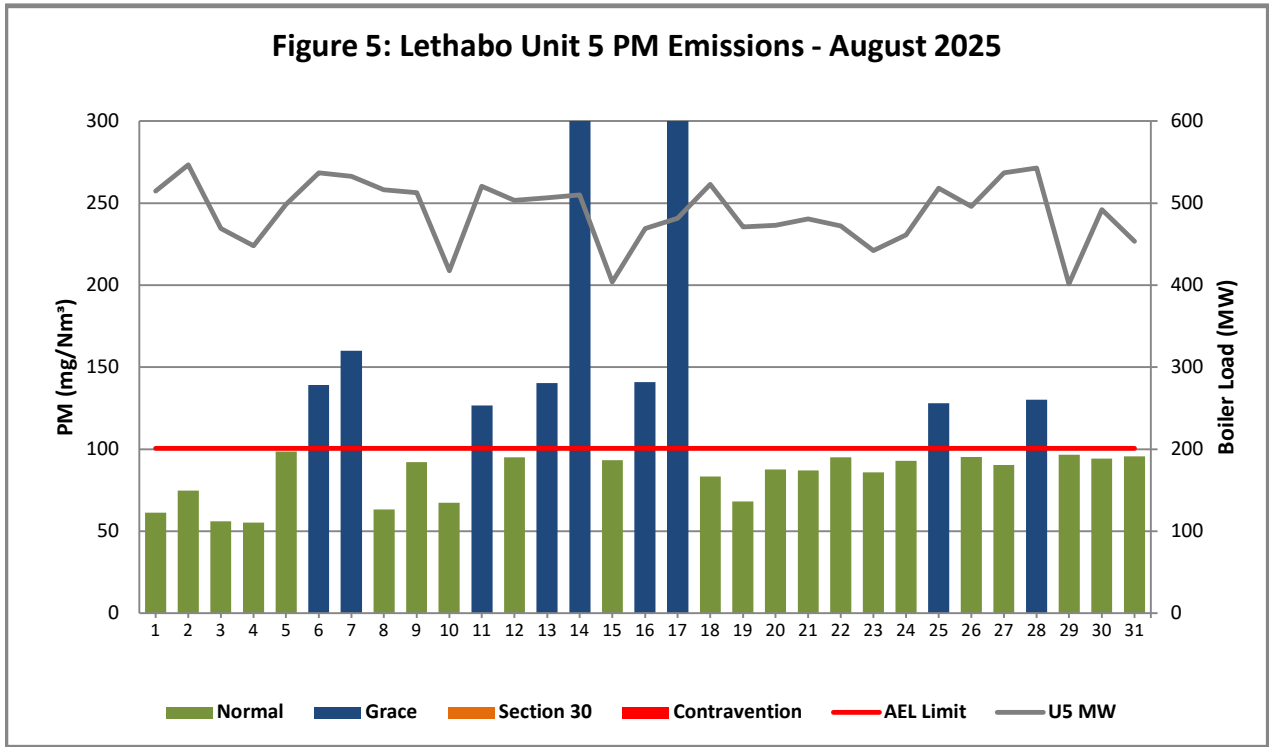
Reasons:	
Date	Description
03-Aug	ESP poor casing performance.RHO ESP casing outage.
06-Aug	ESP poor casing performance.
07-Aug	ESP poor casing performance.Clean rapping brought forward.
15-Aug	Unit 3 shutdown on cold reserve.

Figure 4: Lethabo Unit 4 PM Emissions - August 2025



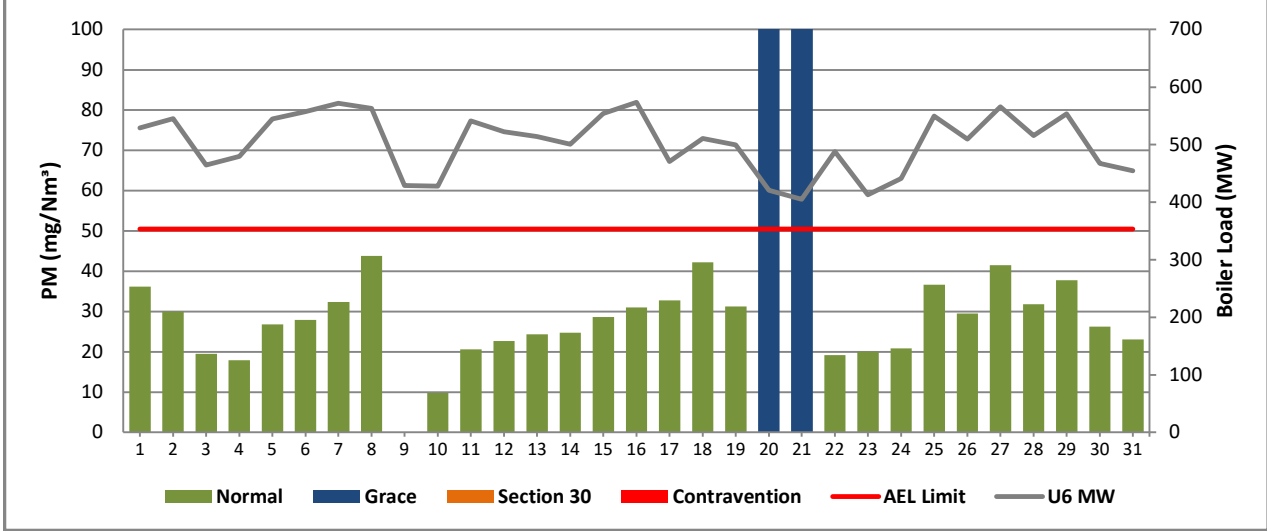
Reasons:	
Date	Description
02-Aug	Poor ESP casing performance.RHO ESP casing outage.
15-Aug	Poor ESP casing performance.Test rap all ESP casings for a minute.Clean rapping brought forward.
22-Aug	Poor ESP performance.

Figure 5: Lethabo Unit 5 PM Emissions - August 2025



Reasons:	
Date	Description
06-Aug	Clean rapping brought forward.Poor ESP casing performance.
07-Aug	Clean rapping brought forward.Poor ESP casing performance.Pre outage STEP test done.
11-Aug	Poor ESP casing performance.Manual rapping done.High hopper levels.SO3 plant issues.
13-Aug	Poor ESP casing performance.High hopper levels.SO3 plant issues.
14-Aug	Poor ESP casing performance.SO3 plant issues.Clean rapping brought forward.
16-Aug	Poor ESP casing performance.LHO Casing outage.
17-Aug	Poor ESP casing performance.LHO Casing outage.
25-Aug	High hopper levels. Poor ESP casing performance.
28-Aug	Poor ESP casing performance.Manual rapping done.

Figure 6: Lethabo Unit 6 PM Emissions - August 2025



Reasons:	
Date	Description
20-Aug	No abatement plant technology due to low load due to work on air heaters
21-Aug	No abatement plant technology due to low load due to work on air heaters

Figure 7: Lethabo Unit 1 SO₂ Emissions - August 2025

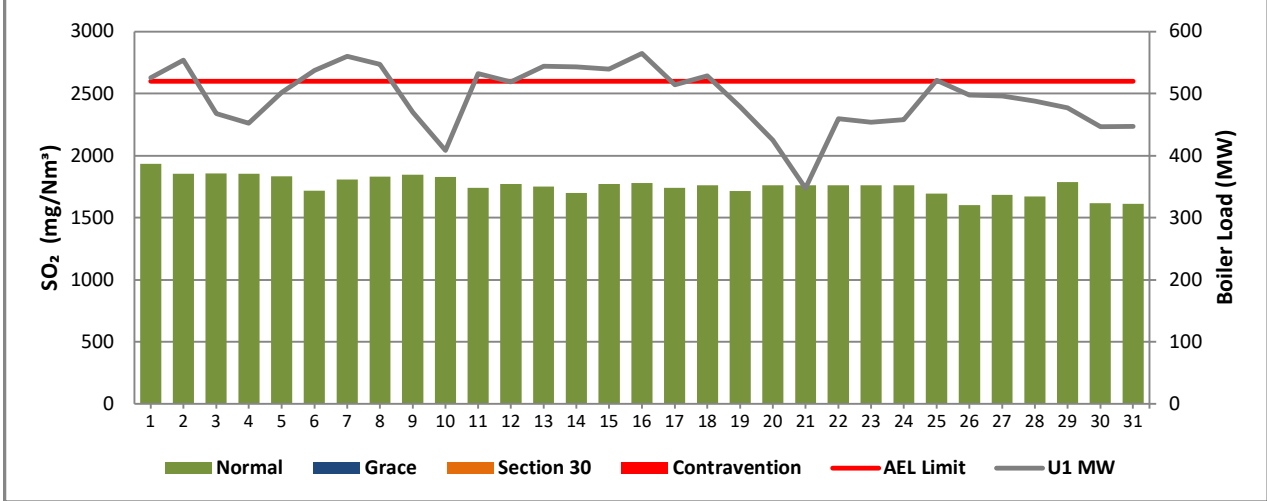


Figure 8: Lethabo Unit 2 SO₂ Emissions - August 2025

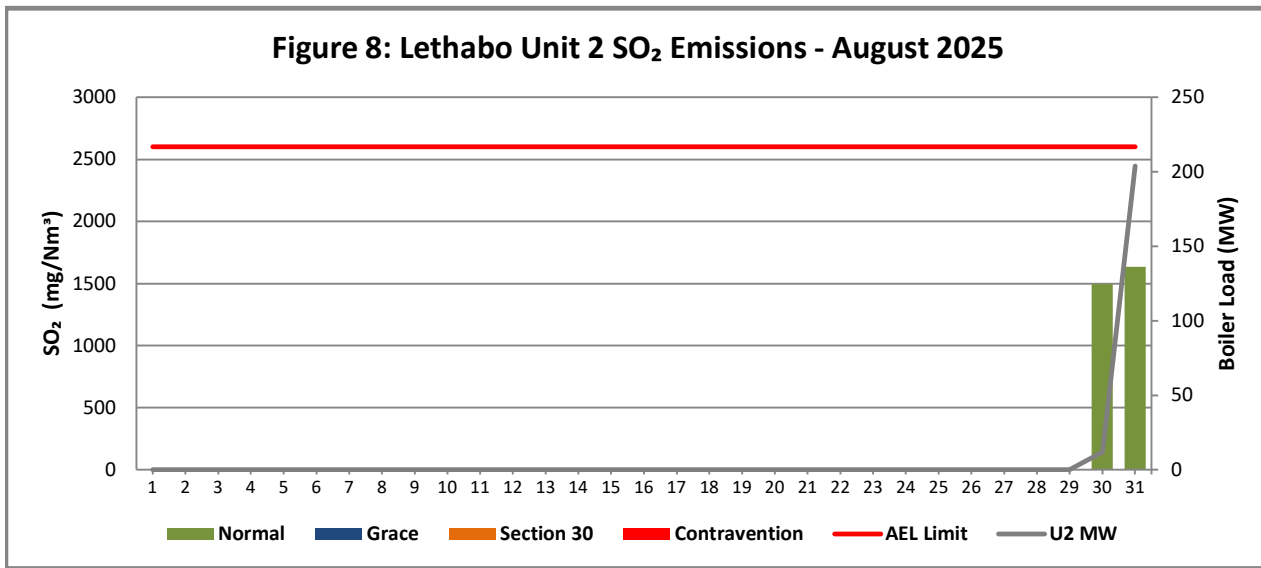


Figure 9: Lethabo Unit 3 SO₂ Emissions - August 2025

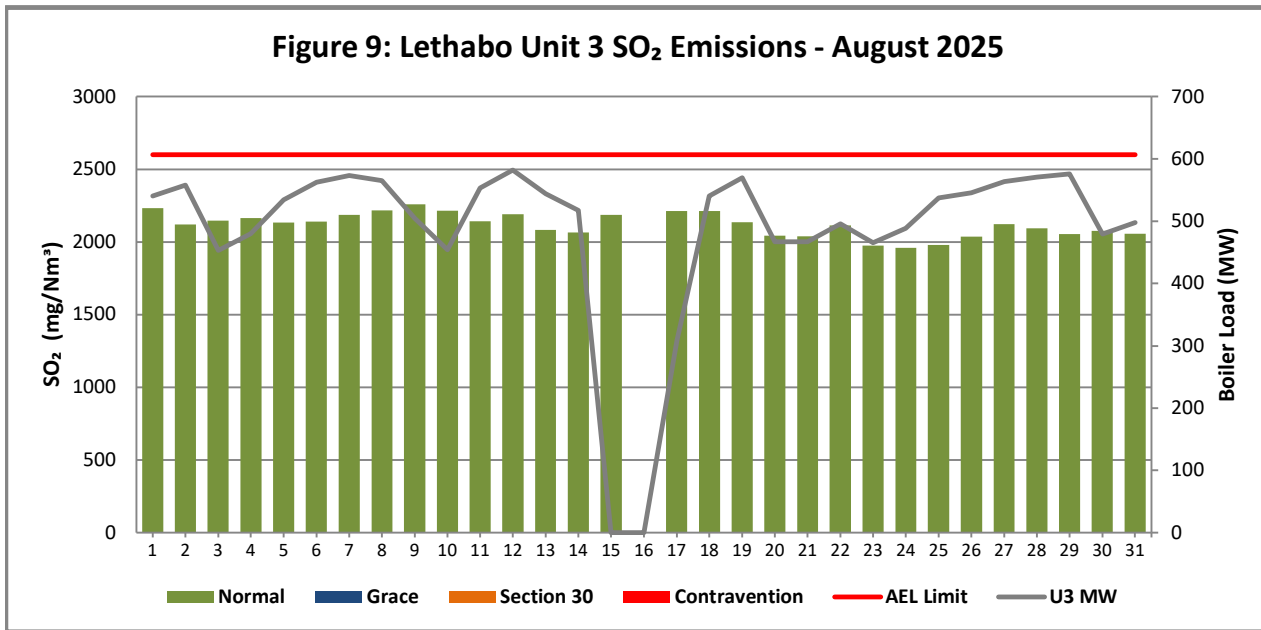


Figure 10: Lethabo Unit 4 SO₂ Emissions - August 2025

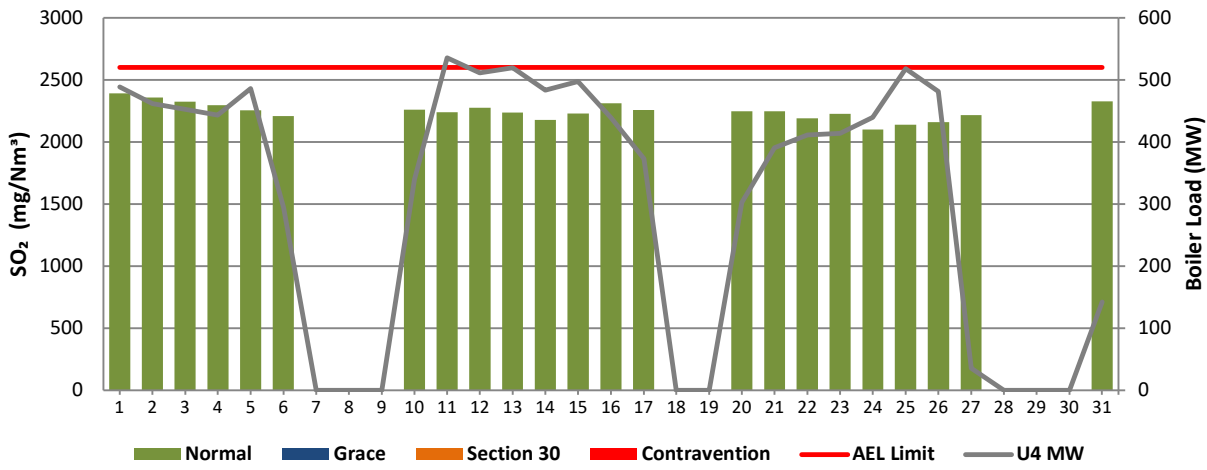


Figure 11: Lethabo Unit 5 SO₂ Emissions - August 2025

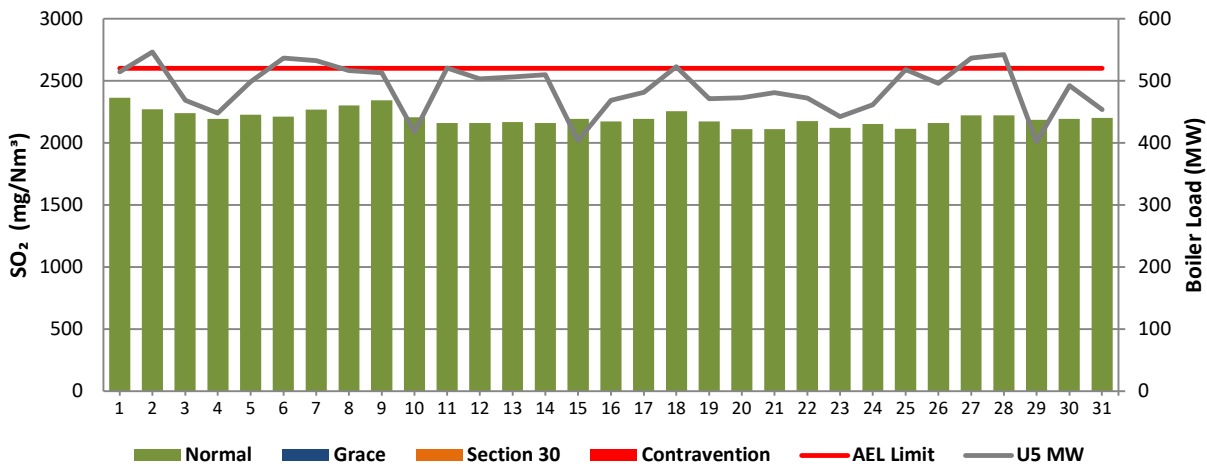


Figure 12: Lethabo Unit 6 SO₂ Emissions - August 2025

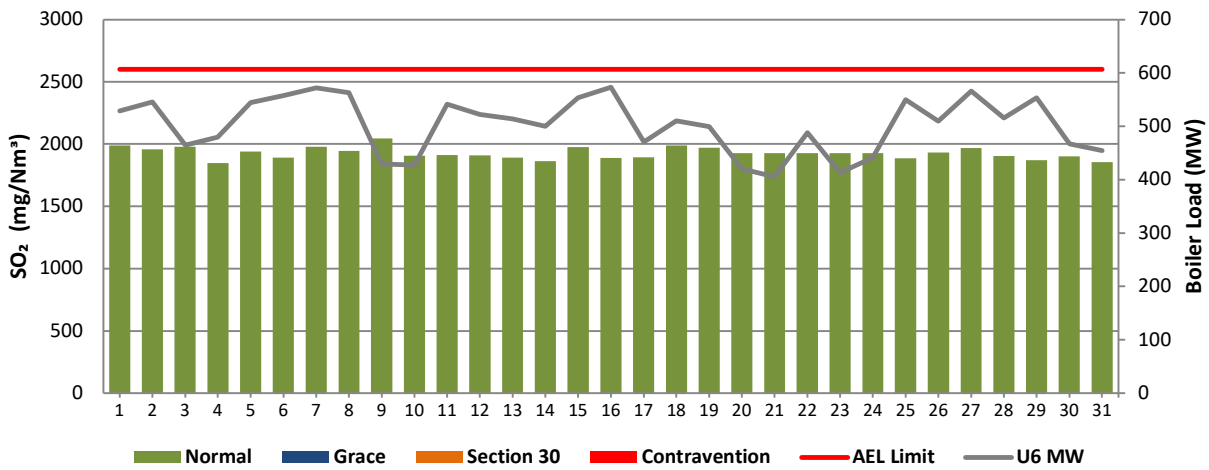


Figure 13: Lethabo Unit 1 NO_x Emissions - August 2025

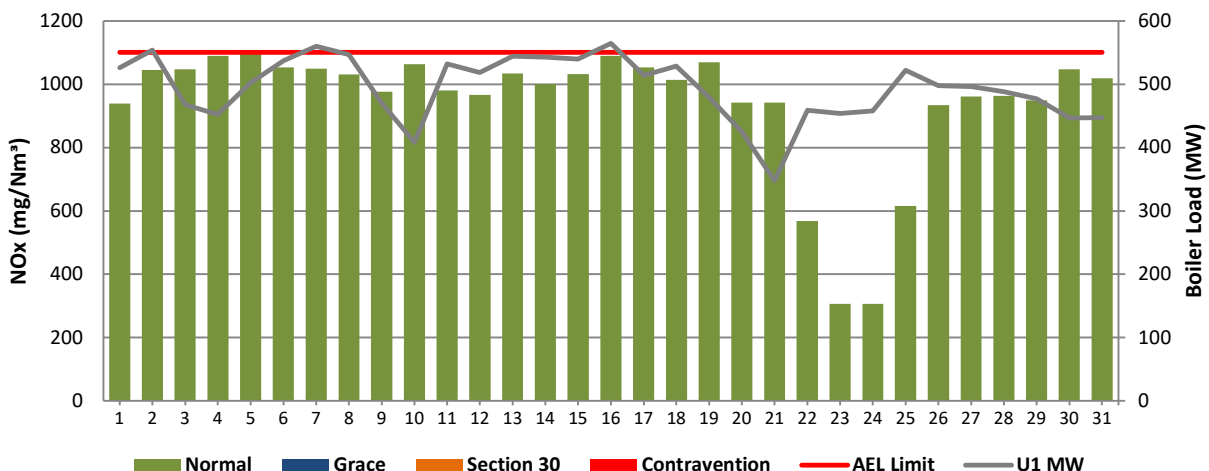


Figure 14: Lethabo Unit 2 NO_x Emissions - August 2025

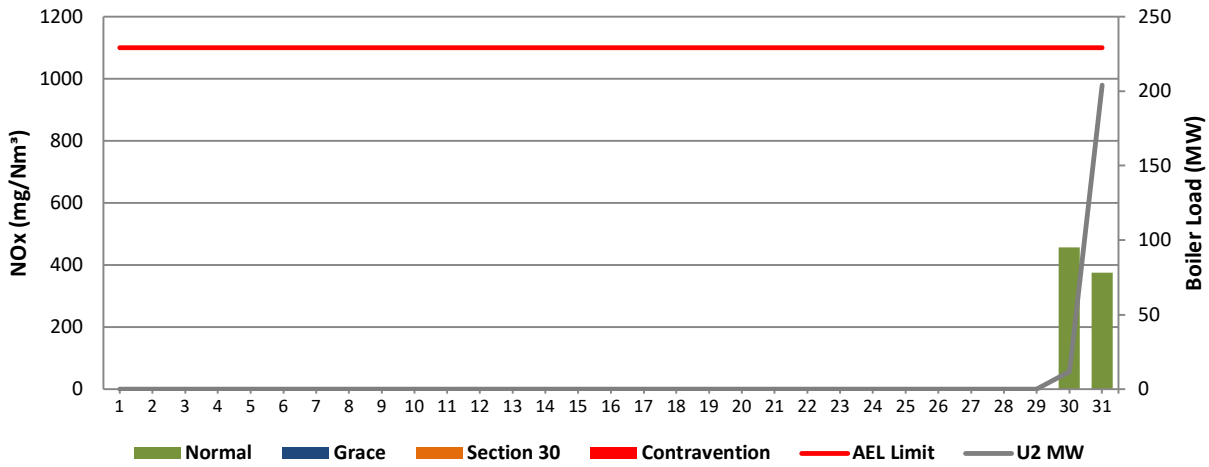


Figure 15: Lethabo Unit 3 NO_x Emissions - August 2025

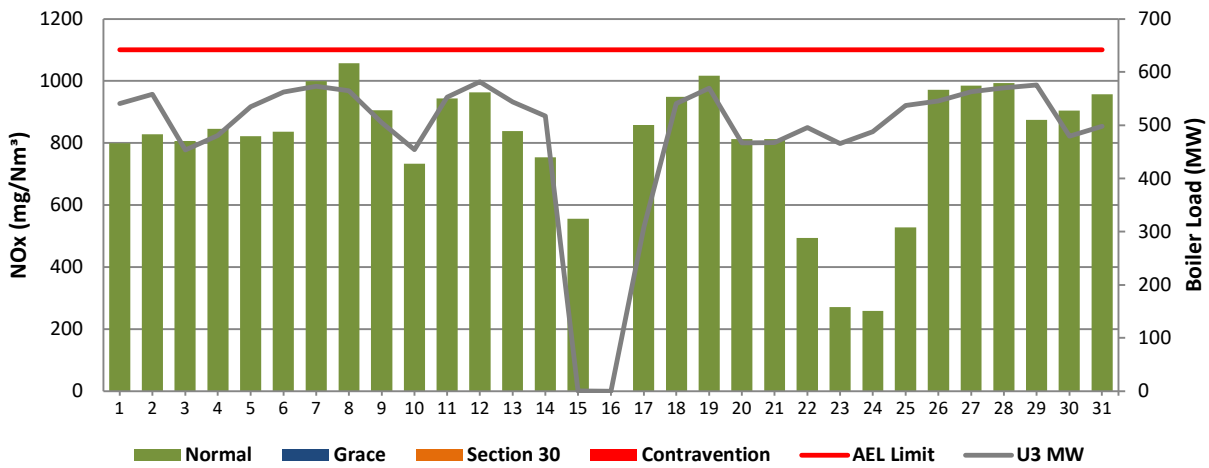


Figure 16: Lethabo Unit 4 NO_x Emissions - August 2025

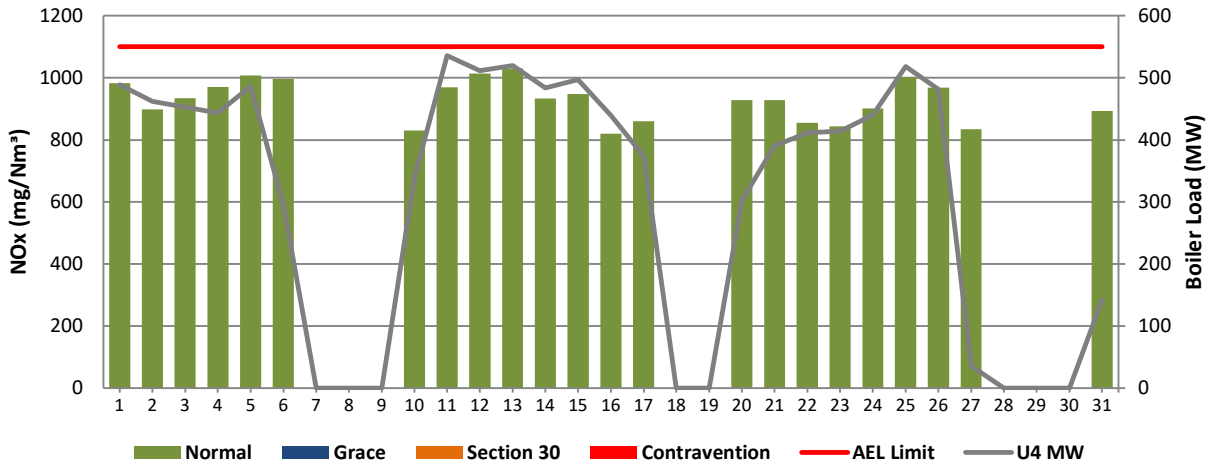


Figure 17: Lethabo Unit 5 NO_x Emissions - August 2025

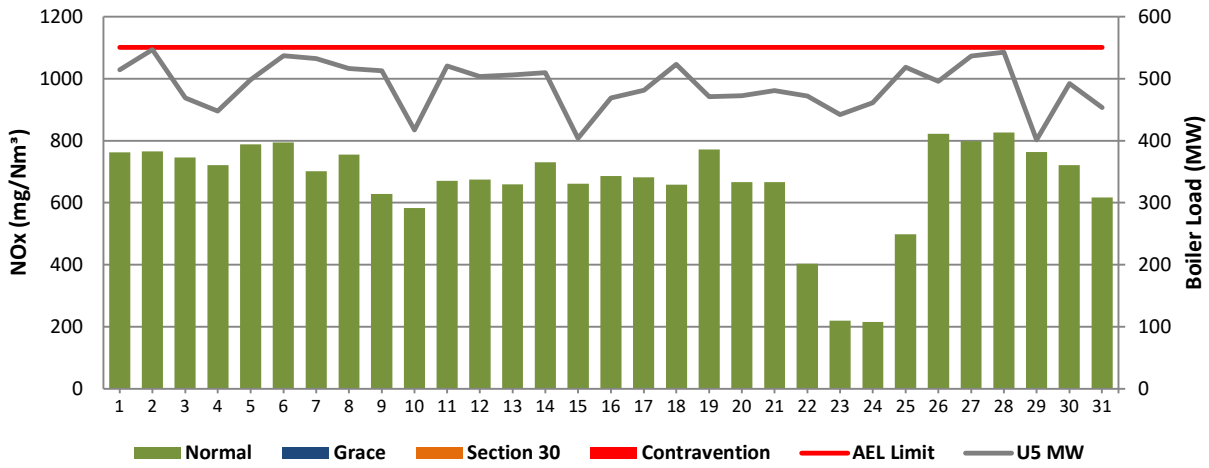
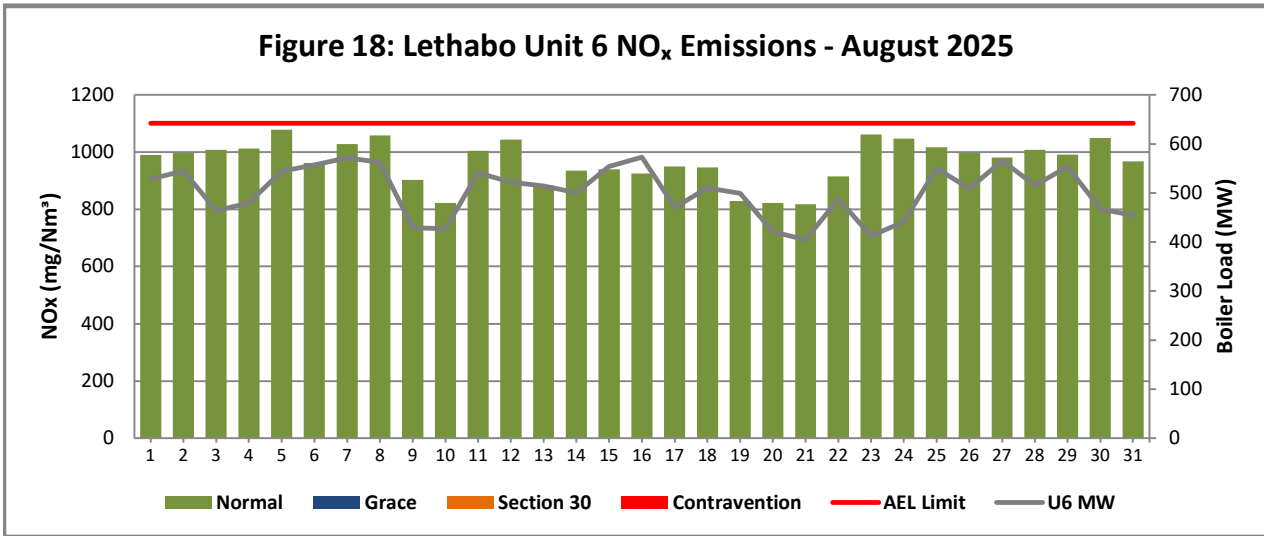


Figure 18: Lethabo Unit 6 NO_x Emissions - August 2025



7 SHUT-DOWN AND LIGHT-UP INFORMATION FOR AUGUST 2025

See Events sheet

8. MAINTENANCE

Unit 1				
Beginning of	2025/08/09 00:00:00	2025/08/22 00:00:00	2025/08/29 00:00:00	
Reason for Maintenance	RHI Precip. casing repairs.	RH inner casing repairs.	LH Inner precip casing repairs	
End (Time):	2025/08/09 18:02:00	2025/08/22 21:11:00	2025/08/30 04:32:00	
Duration	18:02:00	21:11:00	28:32:00	

Unit 2				
Beginning of				
Reason for Maintenance				
End (Time):				
Duration				

Unit 3				
Beginning of	2025/08/03 07:35:00			
Reason for Maintenance	RHO casing repairs.			
End (Time):	2025/08/03 18:55:00			
Duration	11:20:00			

Unit 4				
Beginning of	2025/08/01 23:59			
Reason for Maintenance	RHO casing repairs			
End (Time):	2025/08/02 20:00			
Duration	20:01:00			

Unit 5				
Beginning of	2025/08/15 10:03:00	2025/08/17 00:00		
Reason for Maintenance	LHO casing repairs	LHI casing repairs		
End (Time):	2025/08/16 20:17:00	2025/08/17 20:00		
Duration	34:14:00	20:00:00		

Unit 6				
Beginning of				
Reason for Maintenance				
End (Time):				
Duration				

9 COMPLAINTS

There were no complaints for this months

Source Code / Name	Root Cause Analysis	Calculation of Impacts / emissions associated with the incident	Dispersion modeling of pollutants where applicable	Measures implemented to prevent reoccurrence

10 GENERAL

Unit 1: Monitor Reliability

07 - 08/08/2025 Monitor Reliability due to server issues

12/08/2025: PM monitor Reliability low due to server issues.

Unit 3, 4, 5: Monitor Reliability

10 - 12/08/2025: PM monitor Reliability low due to server issues.

Unit 1, 3, 4, 5 & 6: Gaseous Monitor Reliability

20 - 22/08/2025: Gaseous monitor reliability low due to server issues.

CO2 and Velocity Monitors Low Reliability Units 1-6:

Due to correction of bad data as per internal emission data integrity review actions in 2021 and 2022. Bad Velocity data and Bad CO2 data were corrected/removed as per the review actions and findings.

ADDENDUM TO MONTHLY EMISSIONS REPORT

10. S30 INCIDENT OR LEGAL CONTRAVENTION REGISTER

To be completed in the case of a S30 incident or a legal contravention:

Unit no	Incident Start Date	Incident End Date	Incident Cause	Remedial action	S30 initial notification sent	Date S30 investigation report sent	Date DEA Acknowledgment	Date DEA Acceptable	Comments / Reference No.

11. PARTICULATE EMISSIONS

EMISSION RATE (ACTUAL EMISSION/MWh GENERATED - kg/MWh)

MONTH	UNIT 1	UNIT 2	UNIT 3	UNIT 4	UNIT 5	UNIT 6	STATION
Aug-24	0.48	0.91	0.69	0.47	0.53	0.18	0.54
Sept-24	0.61	0.70	0.69	0.67	0.76	0.24	0.60
Oct-24	0.34	0.62	OFF	0.61	0.78	0.33	0.57
Nov-24	0.42	0.50	OFF	0.90	0.75	0.26	0.56
Dec-24	0.56	0.57	OFF	0.88	0.63	0.24	0.54
Jan-25	1.08	0.51	OFF	0.82	1.47	0.71	0.90
Feb-25	1.50	0.56	7.43	0.49	1.94	0.50	1.47
Mar-25	1.38	0.67	1.83	0.58	2.33	0.46	1.25
Apr-25	0.58	OFF	1.44	5.63	2.46	0.28	1.54
May-25	0.71	OFF	1.28	0.43	0.48	0.25	0.64
Jun-25	0.42	OFF	0.37	0.38	0.53	0.15	0.38
Jul-25	0.39	OFF	0.40	0.48	1.16	0.08	0.59
Aug-25	0.43	0.00	0.37	0.44	0.71	0.69	0.53

ADDENDUM TO MONTHLY EMISSIONS REPORT

12. DAILY EMISSIONS FIGURES

Final Dust Concentration (mg/Nm³)

Date	U1	U2	U3	U4	U5	U6	Limit (U1-U5)	Limit U6
01-Aug	51		53	87	61	36	100	50
02-Aug	75		53	131	75	30	100	50
03-Aug	62		162	61	56	19	100	50
04-Aug	50		63	47	55	18	100	50
05-Aug	75		93	71	99	27	100	50
06-Aug	90		192	75	139	28	100	50
07-Aug	90		148		160	32	100	50
08-Aug	80		48		63	44	100	50
09-Aug	72		38		92		100	50
10-Aug	27		21		67	10	100	50
11-Aug	45		35	69	127	21	100	50
12-Aug	46		36	62	95	23	100	50
13-Aug	55		30	66	140	24	100	50
14-Aug	50		31	95	327	25	100	50
15-Aug	67		618	112	93	29	100	50
16-Aug	82			81	141	31	100	50
17-Aug	77			74	390	33	100	50
18-Aug	74		59		83	42	100	50
19-Aug	80		85		68	31	100	50
20-Aug	74		45		88	1279	100	50
21-Aug	74		25	53	87	2333	100	50
22-Aug	122		39	104	95	19	100	50
23-Aug	57		44	92	86	20	100	50
24-Aug	81		54	24	93	21	100	50
25-Aug	107		61	76	128	37	100	50
26-Aug	83		56	88	95	29	100	50
27-Aug	90		56	87	90	41	100	50
28-Aug	80		64		130	32	100	50
29-Aug	113		69		97	38	100	50
30-Aug	66		49		94	26	100	50
31-Aug	70		50		96	23	100	50

ADDENDUM TO MONTHLY EMISSIONS REPORT

Final SOx Concentration (mg/Nm ³)							
Date	U1	U2	U3	U4	U5	U6	Limit
01-Aug	1935		2232	2392	2364	1988	2600
02-Aug	1854		2120	2358	2271	1958	2600
03-Aug	1858		2147	2326	2239	1977	2600
04-Aug	1854		2165	2297	2193	1849	2600
05-Aug	1836		2135	2257	2228	1939	2600
06-Aug	1719		2140	2208	2211	1891	2600
07-Aug	1808		2186		2266	1981	2600
08-Aug	1831		2218		2302	1946	2600
09-Aug	1848		2259		2344	2044	2600
10-Aug	1829		2215	2262	2207	1905	2600
11-Aug	1740		2142	2241	2161	1912	2600
12-Aug	1773		2191	2276	2160	1907	2600
13-Aug	1751		2083	2238	2168	1891	2600
14-Aug	1700		2066	2178	2160	1864	2600
15-Aug	1772		2187	2229	2194	1975	2600
16-Aug	1780			2312	2173	1888	2600
17-Aug	1743		2214	2259	2193	1894	2600
18-Aug	1782		2212		2255	1989	2600
19-Aug	1714		2136		2172	1970	2600
20-Aug	1761		2044	2247	2113	1926	2600
21-Aug	1761		2039	2247	2111	1926	2600
22-Aug	1761		2114	2192	2175	1926	2600
23-Aug	1761		1976	2226	2121	1926	2600
24-Aug	1761		1960	2101	2150	1926	2600
25-Aug	1697		1979	2139	2115	1885	2600
26-Aug	1604		2038	2159	2160	1932	2600
27-Aug	1685		2124	2216	2220	1967	2600
28-Aug	1672		2094		2220	1903	2600
29-Aug	1786		2056		2185	1870	2600
30-Aug	1616	1494	2078		2192	1902	2600
31-Aug	1613	1635	2057	2329	2203	1855	2600

ADDENDUM TO MONTHLY EMISSIONS REPORT

Final NOx Concentration (mg/Nm ³)							
Date	U1	U2	U3	U4	U5	U6	Limit
01-Aug	939		800	983	763	990	1100
02-Aug	1046		828	898	766	997	1100
03-Aug	1048		807	934	746	1008	1100
04-Aug	1090		845	970	722	1012	1100
05-Aug	1097		822	1007	788	1079	1100
06-Aug	1054		836	996	794	962	1100
07-Aug	1049		999		701	1028	1100
08-Aug	1031		1058		755	1058	1100
09-Aug	976		905		629	903	1100
10-Aug	1064		733	830	584	822	1100
11-Aug	981		944	969	671	1005	1100
12-Aug	967		963	1014	674	1044	1100
13-Aug	1034		839	1030	660	884	1100
14-Aug	1001		754	933	730	936	1100
15-Aug	1032		556	948	661	940	1100
16-Aug	1090			820	686	926	1100
17-Aug	1053		858	860	682	950	1100
18-Aug	1013		949		659	946	1100
19-Aug	1069		1017		772	828	1100
20-Aug	942		812	928	667	822	1100
21-Aug	942		812	928	667	818	1100
22-Aug	568		494	854	403	915	1100
23-Aug	305		271	844	219	1062	1100
24-Aug	306		258	901	216	1047	1100
25-Aug	615		527	1002	498	1017	1100
26-Aug	933		971	968	822	997	1100
27-Aug	961		985	834	799	981	1100
28-Aug	964		994		827	1008	1100
29-Aug	950		875		763	991	1100
30-Aug	1048	457	905		722	1049	1100
31-Aug	1019	375	957	893	617	968	1100

ADDENDUM TO MONTHLY EMISSIONS REPORT

13. AVAILABILITY

ESP utilisation

Month	Availability											
	Unit 1	Days Affected	Unit 2	Days Affected	Unit 3	Days Affected	Unit 4	Days Affected	Unit 5	Days Affected	Unit 6	Days Affected
Aug-24	98.59%	1.8	100.00%	0.0	99.21%	1.0	100.00%	0.0	99.84%	0.2	100.00%	0.00%
Sept-24	98.55%	1.74	99.84%	0.19	100.00%	0.00	99.12%	1.06	99.16%	1.01	100.00%	0.00
Oct-24	99.19%	1.0	100.00%	0.0	100.00%	0.0	100.00%	0.0	97.67%	2.9	100.00%	0.00%
Nov-24	0.00%	0.0	0.00%	0.0	0.00%	0.0	0.00%	0.0	0.00%	0.0	0.00%	0.00%
Dec-24	99.39%	0.76	99.24%	0.95	100.00%	0.00	99.18%	1.01	99.96%	0.05	99.27%	0.91
Jan-25	98.99%	1.3	100.00%	0.0	100.00%	0.0	100.00%	0.0	98.40%	2.0	100.00%	0.00%
Feb-25	99.18%	0.92	99.84%	0.17	100.00%	0.00	100.00%	0.00	100.00%	0.00	98.90%	1.24
Mar-25	98.08%	2.38	99.27%	0.91	98.99%	1.25	100.00%	0.00	95.52%	5.55	100.00%	0.00
Apr-25	98.21%	2.1	100.00%	0.0	100.00%	0.0	100.00%	0.0	97.50%	3.0	98.48%	1.8
May-25	99.33%	0.8	100.00%	0.0	97.26%	3.4	100.00%	0.0	100.00%	0.0	100.00%	0.0
Jun-25	98.12%	2.3	100.00%	0.0	100.00%	0.0	100.00%	0.0	99.16%	1.0	100.00%	0.0
Jul-25	97.94%	2.6	100.00%	0.0	100.00%	0.0	98.82%	1.5	98.41%	2.0	100.00%	0.0
Aug-25	97.72%	2.8	100.00%	0.0	99.62%	0.5	99.33%	0.8	98.18%	2.3	100.00%	0.0

SO3 plant utilisation

Month	Availability											
	Unit 1	Days Affected	Unit 2	Days Affected	Unit 3	Days Affected	Unit 4	Days Affected	Unit 5	Days Affected	Unit 6	Days Affected
Aug-24	99.46%	0.2	91.70%	2.6	100.00%	0.0	97.98%	0.6	99.59%	0.1	96.68%	103.04%
Sept-24	100.00%	0.00	89.45%	3.16	99.33%	0.20	99.84%	0.05	99.58%	0.13	99.92%	2.45%
Oct-24	99.85%	0.0	95.65%	1.3	Off-line	Off-line	98.92%	0.3	93.82%	1.9	99.59%	0.13
Nov-24	99.99%	0.0	96.60%	1.0	Off-line	Off-line	99.17%	0.3	97.46%	0.8	99.21%	0.24
Dec-24	52.80%	14.6	27.08%	22.6	Off-line	Off-line	77.33%	7.0	66.67%	10.3	60.94%	12.11
Jan-25	95.59%	1.4	93.50%	2.0	Off-line	Off-line	96.18%	1.2	90.28%	3.0	94.33%	1.76
Feb-25	91.37%	2.4	95.28%	1.3	67.36%	9.14	95.45%	1.3	91.35%	2.4	97.77%	0.62
Mar-25	98.52%	0.5	96.36%	1.1	85.05%	4.63	98.61%	0.4	99.91%	0.0	88.42%	3.59
Apr-25	95.63%	1.3	OFF	OFF	89.52%	3.15	85.62%	4.3	88.61%	3.4	99.78%	0.1
May-25	95.99%	1.2	OFF	OFF	98.12%	0.58	99.01%	0.3	99.52%	0.1	98.36%	0.5
Jun-25	99.86%	0.0	OFF	OFF	99.25%	0.22	99.83%	0.1	98.19%	0.5	99.22%	0.2
Jul-25	99.87%	0.0	OFF	OFF	99.06%	0.29	100.00%	0.0	98.79%	0.4	66.67%	10.3
Aug-25	99.73%	0.1	Exempt	Exempt	96.41%	1.11	98.87%	0.4	99.87%	0.0	98.06%	0.6

ADDENDUM TO MONTHLY EMISSIONS REPORT

Particulate Emission Monitors

Availability						
	Unit 1	Unit 2	Unit 3	Unit 4	Unit 5	Unit 6
Aug-24	95.70%	91.44%	99.38%	99.60%	98.95%	99.58%
Sept-24	98%	94%	100%	98%	96%	99.64%
Oct-24	99.65%	94.32%	OFF	98.75%	96.51%	98.18%
Nov-24	99.43%	99.40%	OFF	99.31%	94.41%	98.54%
Dec-24	100.00%	96.61%	OFF	98.22%	96.26%	99.60%
Jan-25	96.64%	98.67%	OFF	87.85%	92.93%	99.02%
Feb-25	98.72%	97.70%	85.64%	99.62%	93.53%	98.72%
Mar-25	93.15%	96.04%	96.08%	99.85%	92.61%	97.36%
Apr-25	98.70%	OFF	99.50%	90.90%	96.10%	99.10%
May-25	100.00%	OFF	98.70%	100.00%	98.90%	100.00%
Jun-25	98.50%	OFF	98.10%	99.80%	99.80%	99.20%
Jul-25	100.00%	OFF	100.00%	100.00%	98.40%	66.70%
Aug-25	99.90%	OFF	96.30%	99.80%	99.50%	99.20%

Gaseous Emission Monitors

Month	Unit 1		Unit 2		Unit 3		Unit 4		Unit 5		Unit 6	
	SOx	NOx	SOx	NOx	SOx	NOx	SOx	NOx	SOx	NOx	SOx	NOx
Aug-24	99.9%	100.0%	99.8%	100.0%	100.0%	100.0%	100.0%	100.0%	100.0%	100.0%	100.0%	100.0%
Sept-24	100.0%	100.0%	100.0%	99.7%	100.0%	100.0%	100.0%	100.0%	100.0%	100.0%	100.0%	100.0%
Oct-24	99.8%	100.0%	99.6%	99.7%	0.0%	0.0%	100.0%	100.0%	100.0%	100.0%	99.7%	99.7%
Nov-24	100.0%	100.0%	100.0%	100.0%	0.0%	0.0%	100.0%	100.0%	100.0%	100.0%	99.9%	100.0%
Dec-24	57.5%	37.5%	37.5%	37.5%	0.0%	0.0%	79.7%	79.7%	66.7%	66.7%	65.6%	65.7%
Jan-25	99.3%	99.1%	99.3%	99.3%	0.0%	0.0%	100.0%	96.4%	100.0%	100.0%	100.0%	100.0%
Feb-25	98.2%	100.0%	100.0%	99.6%	86.1%	85.2%	96.0%	96.0%	94.6%	94.6%	96.2%	96.2%
Mar-25	93.8%	99.9%	100.0%	100.0%	100.0%	100.0%	100.0%	100.0%	100.0%	100.0%	100.0%	100.0%
Apr-25	98.6%	98.6%	OFF	OFF	98.6%	98.6%	92.6%	91.9%	96.1%	99.2%	99.2%	99.2%
May-25	97.7%	97.7%	OFF	OFF	98.1%	98.1%	97.5%	97.5%	97.8%	97.8%	98.1%	98.1%
Jun-25	99.9%	99.9%	OFF	OFF	96.0%	96.0%	99.8%	99.8%	99.7%	99.6%	99.6%	99.8%
Jul-25	99.7%	99.7%	OFF	OFF	99.7%	99.7%	99.9%	99.9%	99.9%	99.9%	100.0%	100.0%
Aug-25	100.0%	80.9%	100.0%	98.0%	93.6%	85.4%	99.8%	84.9%	99.5%	86.2%	99.2%	93.6%

Oxygen Monitor Availability

	Unit 1	Unit 2	Unit 3	Unit 4	Unit 5	Unit 6
Aug-24	99.87%	99.80%	99.87%	99.87%	100.00%	99.48%
Sept-24	100.00%	99.90%	100.00%	99.86%	99.72%	99.70%
Oct-24	99.23%	99.55%	0.00%	99.87%	94.89%	99.28%
Nov-24	100.00%	100.00%	0.00%	99.86%	84.89%	99.15%
Dec-24	57.50%	37.50%	0.00%	79.71%	66.67%	65.73%
Jan-25	99.55%	99.50%	0.00%	98.40%	99.43%	82.47%
Feb-25	99.70%	99.24%	85.19%	95.83%	94.39%	60.94%
Mar-25	100.00%	100.00%	100.00%	100.00%	99.81%	99.87%
Apr-25	98.74%	OFF	98.44%	92.56%	99.03%	99.00%
May-25	97.38%	OFF	97.98%	97.53%	97.54%	97.98%
Jun-25	99.70%	OFF	95.80%	99.80%	99.60%	99.60%
Jul-25	99.70%	OFF	99.70%	99.70%	99.60%	100.00%
Aug-25	79.40%	100.00%	85.40%	84.70%	86.10%	93.60%

ADDENDUM TO MONTHLY EMISSIONS REPORT

14. EFFICIENCY

	ESP Efficiency (%)					
	Unit 1	Unit 2	Unit 3	Unit 4	Unit 5	Unit 6
Aug-24	99.866%	99.802%	99.866%	99.866%	100.000%	99.476%
Sept-24	100.00%	99.90%	100.00%	99.86%	99.72%	99.702%
Oct-24	99.228%	99.546%	0.000%	99.866%	94.892%	99.280%
Nov-24	100.000%	100.000%	0.000%	99.861%	84.886%	99.147%
Dec-24	97.500%	37.500%	0.000%	79.710%	66.667%	65.726%
Jan-25	99.554%	99.500%	0.000%	98.397%	99.432%	82.471%
Feb-25	99.702%	99.242%	85.188%	95.833%	94.391%	60.938%
Mar-25	100.000%	100.000%	100.000%	100.000%	99.812%	99.866%
Apr-25	98.818%	OFF	98.484%	98.074%	99.067%	99.877%
May-25	97.740%	OFF	99.440%	99.820%	99.780%	99.870%
Jun-25	99.830%	OFF	99.840%	99.840%	99.740%	99.930%
Jul-25	99.850%	OFF	99.820%	99.800%	99.460%	99.960%
Aug-25	99.830%	OFF	99.840%	99.820%	99.680%	99.620%

15. REMARKS

UNIT	MWLOSS	REASON	ACTUALSTARTDATE	ACTUALENDDATE
1	90	RHI casing repairs	2025/08/09 00:00:00	2025/08/09 18:02:00
1	140	High stack emissions.	2025/08/19 20:09:00	2025/08/20 00:17:00
1	593	UNIT TRIPPED DUE TO LOSS OF FRF PUMP.	2025/08/21 14:22:00	2025/08/21 18:27:00
1	90	Precip casing repairs	2025/08/22 00:00:00	2025/08/22 21:11:00
1	190	High stack emissions.	2025/08/27 21:51:00	2025/08/28 04:53:00
1	90	LHI casing rapper bars repairs	2025/08/29 00:00:00	2025/08/30 04:32:00
2	593	MGO ESP & SO3	2025/08/01 00:00:00	2025/08/09 20:56:00
2	353	ESP & SO3 plant Optimization	2025/08/31 01:00:00	2025/08/31 14:42:00
2	593	Condenser vac. trip. HP By-pass opted.	2025/08/31 14:42:00	2025/08/31 17:37:00
2	593	Boiler tube leak repairs	2025/08/31 19:31:00	2025/08/31 23:59:59
3	118	RHO casing repairs.	2025/08/03 07:35:00	2025/08/03 18:55:00
3	593	AM: Overspeed trip test.	2025/08/15 00:04:00	2025/08/15 00:58:00
3	0	Cold reserve	2025/08/15 00:58:00	2025/08/16 03:00:00
3	593	Repair spraywaters	2025/08/16 03:00:00	2025/08/17 07:54:00
4	56	EF:High stack emissions	2025/08/01 15:21:00	2025/08/01 16:59:00
4	64	High stack emissions.	2025/08/01 16:59:00	2025/08/01 20:40:00
4	70	High stack emissions.	2025/08/01 20:40:00	2025/08/01 23:59:00
4	96	RHO casing repairs	2025/08/01 23:59:00	2025/08/02 04:31:00
4	71	RHO precip casing repairs	2025/08/02 04:31:00	2025/08/02 20:00:00
4	593	Unit was manually tripped due to loss of essential equipment	2025/08/06 13:46:00	2025/08/10 04:33:00
4	160	High stack emissions.	2025/08/16 09:23:00	2025/08/16 15:22:00
4	180	High stack emissions.	2025/08/16 15:22:00	2025/08/17 00:05:00
4	160	EF:High stack emissions	2025/08/17 00:05:00	2025/08/17 04:51:00
4	593	Boiler tube leak	2025/08/17 20:15:00	2025/08/20 05:32:00
4	593	Boiler tube leak.	2025/08/27 02:07:00	2025/08/30 10:00:00
4	0	Cold Reserve	2025/08/30 10:00:00	2025/08/31 15:16:00
5	196	AM: High stack emissions.	2025/08/15 04:04:00	2025/08/15 10:03:00
5	100	LHO precip casing	2025/08/15 10:03:00	2025/08/16 20:17:00
5	98	High stack emissions.	2025/08/15 10:03:00	2025/08/16 00:32:00
5	100	LH Inner precip casing repairs	2025/08/17 00:00:00	2025/08/17 20:00:00
5	593	R/H Pyrometer protection activated.	2025/08/29 09:17:00	2025/08/29 14:10:00
6	593	Tripped on low drum level	2025/08/08 23:38:00	2025/08/09 04:07:00
6	18	AM: Planned mill load line tests.	2025/08/14 22:00:00	2025/08/15 01:18:00
6	328	LH PA fan repairs	2025/08/20 22:19:00	2025/08/21 03:20:00