



Mr. Mcebo Mkhathshwa
Air Quality Officer
Fezile Dabi District Municipality
P.O Box 10
Sasolburg
1947

Date: 18 March 2026

Enquiries:
S Xulu
Tel +27 16 457 5947

LRP01PLA000_0464/20250609

Dear Mr. Mkhathshwa

LETHABO POWER STATION EMISSION MONTHLY REPORT FOR MAY 2025

Please find attached Lethabo Power Station emission report for the month of May 2025.

Also attached are the Ambient Air Quality Monitoring Report, Complaints Register and the Fugitive Dust Fallout Monitoring Report for May 2025.

For any additional information please do not hesitate to contact us.

Yours sincerely

Karabo Rakgolela
pp GENERAL MANAGER

Generation Division
Lethabo Power Station
Viljoensdrif / Deneysville Free State
Private Bag X415 Vereeniging 1930 SA
Tel +27 16 457 5111 Fax +27 16 457 5712 www.eskom.co.za
Eskom Holdings SOC Ltd Reg No 2002/015527/30

Report name: **Lethabo Power Station
MAY 2025
Emission Report**

Reference number: **LRP01PLA000_0464/20250609**
Document Type: **Report**
Area of Applicability: **Environment**
Report Date: **June-2025**
Classification: **Controlled Disclosure**

Signatures:

Compiled by:



S Zulu
Boiler Engineer

Date: 18/03/2026

Verified by :



S Xulu
Environmental Officer

Date: 2026/03/18


Reviewed by:



C. Govinden
BPE Manager

Date: 2026/03/20


Reviewed by:



P Malinga
PE Manager

Date: 2026/03/23


Reviewed by:



L Nel
C&I Manager

Date: 2026-03-23

Reviewed by:



M Hariram
Environmental Manager

Date: 2026-03-23

Approved by:



H Sewsunker
Technical Manager

Date: 2026-03-30

Reviewed by:



T. Njapha
Engineering Manager

Date: 2026-03-26

CONTROLLED DISCLOSURE

When downloaded from the database, this document is uncontrolled and it is the responsibility of the user to ensure that it is the same as the authorised revision on the data base
Copyright © 2008, Eskom Generation, Lethabo Power Station

LETHABO POWER STATION MONTHLY EMISSIONS REPORT

Atmospheric Emission License: FDDM-MET-2011-08-P1



1 RAW MATERIALS AND PRODUCTS

Raw Materials and Products	Raw Material Type	Units	Max Permitted Consumption Rate	Consumption Rate May-2025
	Coal	Tons	2 000 000	1 093 956
Fuel Oil	Tons	1 700	841.840	

Production Rates	Product / By-Product Name	Units	Max Production Capacity Permitted	Indicative Production Rate May-2025
	Energy	GWh	2 834.640	1 555.944
Ash	Tons	770 000	403 013.239	
RE Ash	kg/MWh	not specified	259.015	

Note: Max energy rate = AEL capacity [3,810 MW] × 24 Hrs × Days in MONTH ÷ 1,000 (to convert to GWh).

2 ENERGY SOURCE CHARACTERISTICS

Coal Characteristic	Units	Stipulated Range	Monthly Average Content
Sulphur Content	%	0.6 TO >2.6	0.720
Ash Content	%	21 TO <46	36.840

Note: The "standard" is not a fixed limit but an optimal guideline. It may vary with coal quality. The stipulated range reflects station acceptance test values.

3 EMISSION LIMITS (mg/Nm³)

Associated Unit/Stack	Daily Limit		
	PM	SO ₂	NO _x
Unit 1	100	2600	1100
Unit 2	100	2600	1100
Unit 3	100	2600	1100
Unit 4	100	2600	1100
Unit 5	100	2600	1100
Unit 6	50	2600	1100

4 ABATEMENT TECHNOLOGY (%)

Associated Unit/Stack	Technology Type	ESP Efficiency	Technology Type	SO ₃ Plant Utilization
Unit 1	ESP + SO ₃	99.735%	SO ₃	96.0%
Unit 2	ESP + SO ₃	Off-line	SO ₃	Off-line
Unit 3	ESP + SO ₃	99.439%	SO ₃	98.1%
Unit 4	ESP + SO ₃	99.828%	SO ₃	99.0%
Unit 5	ESP + SO ₃	99.783%	SO ₃	99.5%
Unit 6	ESP + SO ₃	99.861%	SO ₃	98.4%

Note: The ESP plant does not have a bypass mode; therefore, it operates at 100% utilization.

5 DATA RELIABILITY (%)

Associated Unit/Stack	PM	SO ₂	NO	O ₂
Unit 1	100.0	97.7	97.7	97.4
Unit 2	Off-line	Off-line	Off-line	Off-line
Unit 3	98.7	98.1	98.1	98.0
Unit 4	100.0	97.5	97.5	97.5
Unit 5	98.9	97.8	97.8	97.5
Unit 6	100.0	98.1	98.1	98.0

Note: NO_x emissions are measured as NO in PPM. The final NO_x value is expressed as total NO₂ equivalent.

6 EMISSION PERFORMANCE

Table 6.1: Monthly tonnages for May 2025

Associated Unit/Stack	PM (tons)	SO ₂ (tons)	NO _x (tons)
Unit 1	189.8	2 815	1 435
Unit 2	Off-line	Off-line	Off-line
Unit 3	473.6	4 113	1 607
Unit 4	135.1	3 916	1 768
Unit 5	134.9	2 857	1 120
Unit 6	92.2	3 837	1 672
SUM	1 025.57	17 539	7 602

Table 6.2: PM AEL Daily Compliance - May 2025

Associated Unit/Stack	Normal	Grace	Section 30	NC	Total Exceedance	Mnth Avg (mg/Nm ³)
Unit 1	5	4	0	14	18	120.7
Unit 2	0	0	0	0	0	18 451.0
Unit 3	5	5	0	21	26	212.5
Unit 4	23	3	0	0	3	71.6
Unit 5	21	5	0	0	5	112.8
Unit 6	22	8	0	0	8	47.2
SUM	76	25	0	35	60	

Table 6.3: SO₂ AEL Daily Compliance - May 2025

Associated Unit/Stack	Normal	Grace	Section 30	NC	Total Exceedance	Mnth Avg (mg/Nm ³)
Unit 1	24	0	0	0	0	1 718.0
Unit 2	0	0	0	0	0	
Unit 3	31	0	0	0	0	1 774.7
Unit 4	27	0	0	0	0	2 018.4
Unit 5	27	0	0	0	0	1 717.3
Unit 6	31	0	0	0	0	1 938.6
SUM	140	0	0	0	0	

Table 6.4: NO_x AEL Daily Compliance - May 2025

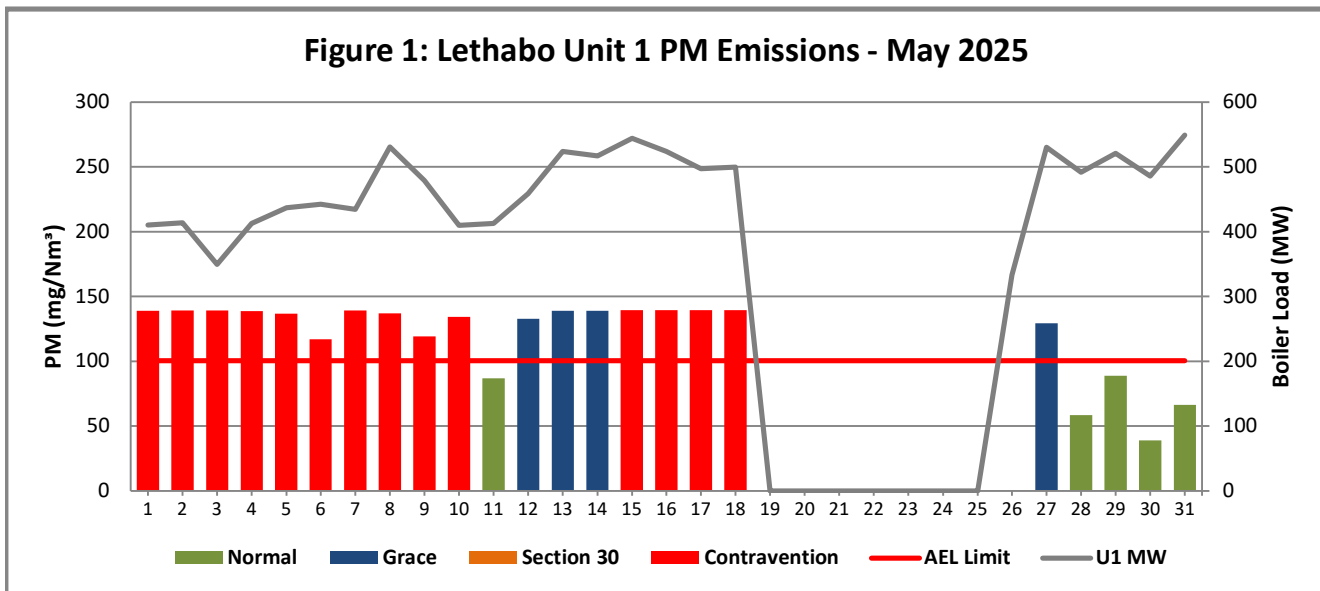
Associated Unit/Stack	Normal	Grace	Section 30	NC	Total Exceedance	Mnth Avg (mg/Nm ³)
Unit 1	24	0	0	0	0	868.9
Unit 2	0	0	0	0	0	
Unit 3	31	0	0	0	0	688.4
Unit 4	27	0	0	0	0	907.3
Unit 5	27	0	0	0	0	671.6
Unit 6	31	0	0	0	0	837.2
SUM	140	0	0	0	0	

Note: Daily limit compliance is shown in the bar charts; monthly compliance is summarized in the table above.

Table 6.5: Legend Description

Condition	Colour	Description
Normal	GREEN	Emissions below Emission Limit Value (ELV)
Grace	BLUE	Emissions above the ELV during grace period
Section 30	ORANGE	Emissions above ELV during a NEMA S30 incident
Contravention	RED	Emissions above ELV but outside grace or S30 incident conditions

Figure 1: Lethabo Unit 1 PM Emissions - May 2025



Reasons:	
Date	Description
01-May	Poor ESP casing performance. High hopper levels.
02-May	Poor ESP casing performance.
03-May	Poor ESP casing performance.
04-May	Poor ESP casing performance.High hopper levels.
05-May	Poor ESP casing performance.High hopper levels.Manual rapping done.
06-May	Poor ESP casing performance.High hopper levels.
07-May	Poor ESP casing performance.
08-May	Poor ESP casing performance.High hopper levels.LHI ESP casing outage.
09-May	Poor ESP casing performance.
10-May	Poor ESP casing performance. High hopper levels.
12-May	Poor ESP casing performance. High hopper levels.
13-May	Poor ESP casing performance. High hopper levels.
14-May	Poor ESP casing performance. High hopper levels.
15-May	Poor ESP casing performance. High hopper levels.
16-May	Poor ESP casing performance.High hopper levels.
17-May	Poor ESP casing performance.High hopper levels.Chain conveyor tripping.Unit 1 shut down.
18-May	Poor ESP casing performance.High hopper levels.
27-May	Unit 1 Light Up conditions

Figure 2: Lethabo Unit 2 PM Emissions - May 2025

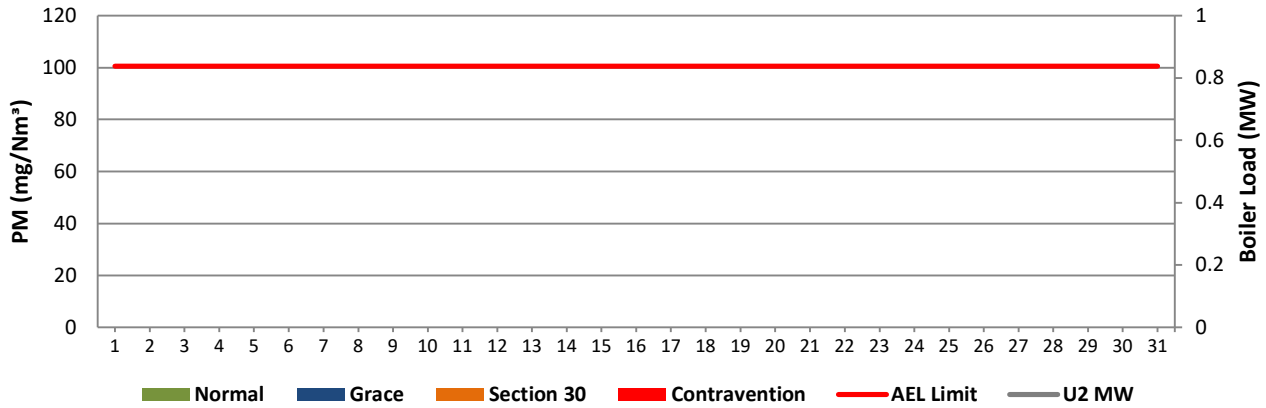
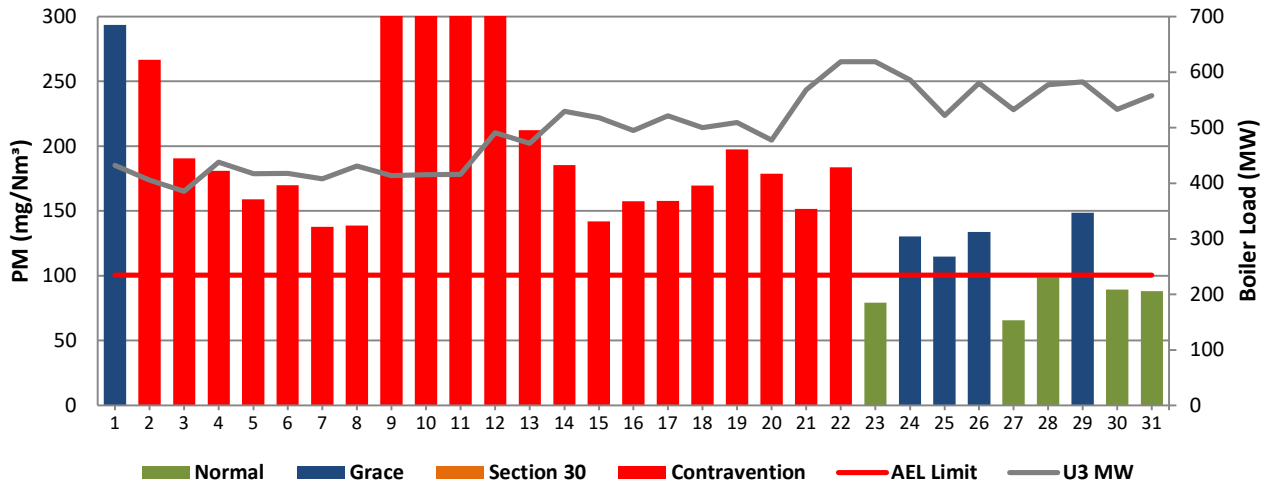


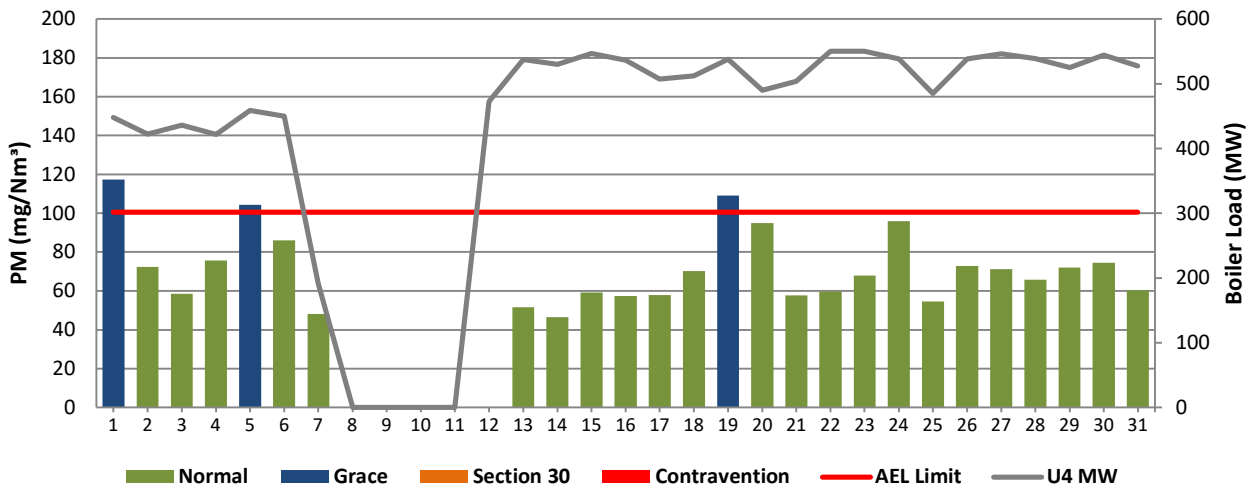
Figure 3: Lethabo Unit 3 PM Emissions - May 2025



Reasons:	
Date	Description
01-May	Unit synchronized on load on the 29/04/2025 @09:14 and is expected to be below on the 02/05/2025 @09:14 and continue to be below the next day 03/5/2025.
02-May	Unit synchronized on load on the 29/04/2025 @09:14 and is expected to be below on the 02/05/2025 @09:14 and continue to be below the next day 03/5/2025.
03-May	Poor ESP casing performance.
04-May	Poor ESP casing performance.
05-May	Poor ESP casing performance.
06-May	Poor ESP casing performance.
07-May	Poor ESP casing performance.
08-May	Poor ESP casing performance. RHO ESP isolated for cooling.
09-May	Poor ESP casing performance. RHO ESP isolated for cooling.
10-May	Poor ESP casing performance. RHO ESP isolated for cooling. 15 x high hopper levels.
11-May	Poor ESP casing performance.
12-May	Poor ESP casing performance. RHO ESP isolated for cooling. 15 x high hopper levels.
13-May	Poor ESP casing performance. RHO ESP isolated for cooling.
14-May	Poor ESP casing performance.
15-May	Poor ESP casing performance.
16-May	Poor ESP casing performance.
17-May	Poor ESP casing performance.Lost so3 sulphur.
18-May	Poor ESP casing performance.
19-May	Poor ESP casing performance.
20-May	Poor ESP casing performance.High hopper levels.
21-May	Poor ESP casing performance.1 x high hopper level.
22-May	Poor ESP casing performance.Clean rapping brought forward.
23-May	Poor ESP casing performance.
25-May	Poor ESP casings(external issues).
26-May	Poor ESP casings.No SO3 plant due to low duct pressure.

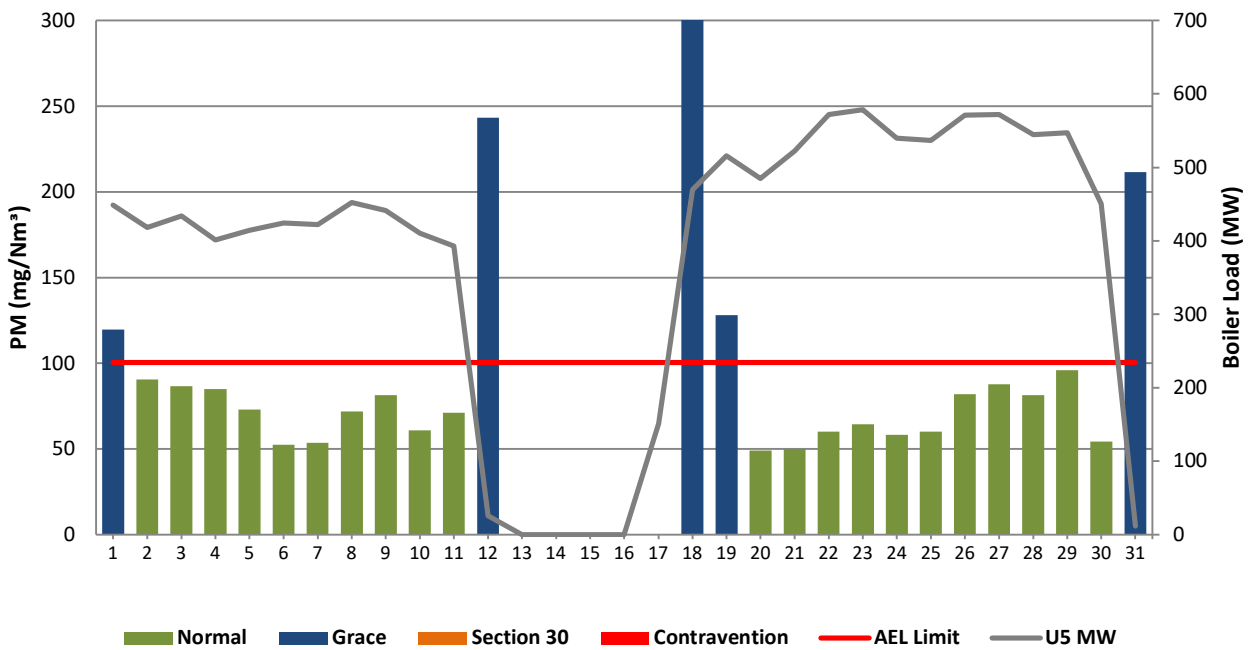
27-May	Poor ESP casing performance.
29-May	Clean rapping brought forward.Poor ESP casings.
30-May	Poor ESP performance

Figure 4: Lethabo Unit 4 PM Emissions - May 2025

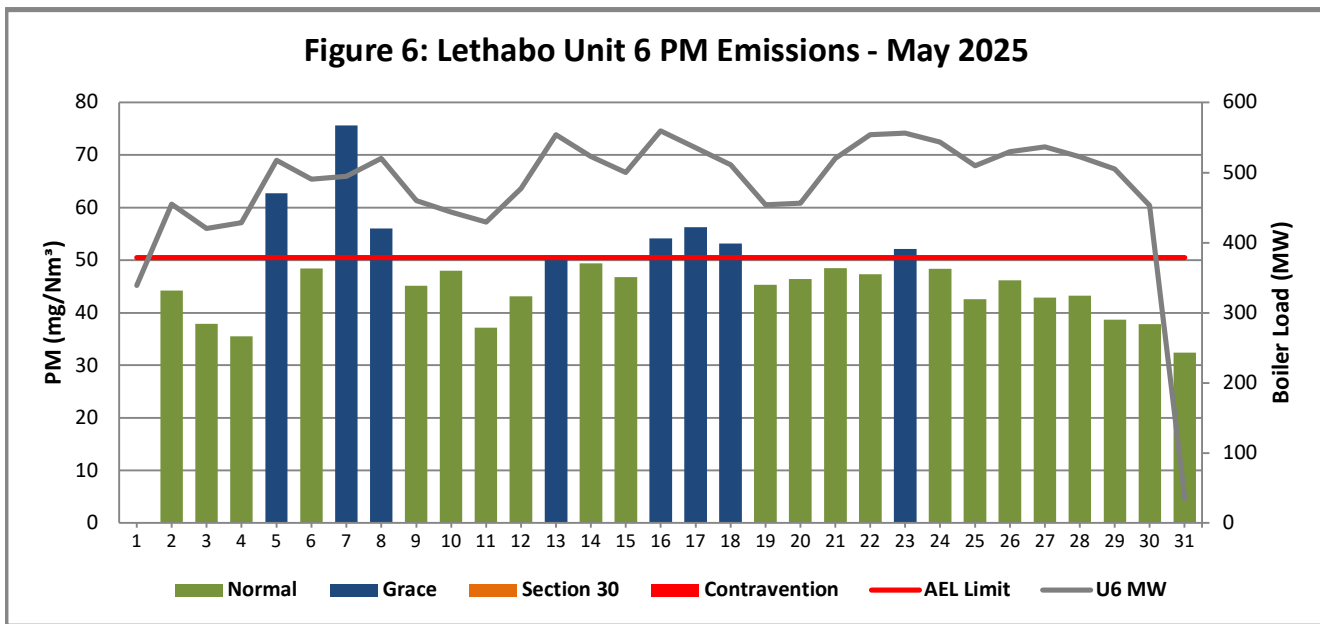


Reasons:	
Date	Description
01-May	Poor ESP casing performance.High hopper levels.DHP issues.
05-May	Poor ESP casing performance.Clean rapping brought forward.
19-May	Correlation test, so3 plant off.

Figure 5: Lethabo Unit 5 PM Emissions - May 2025



Reasons:	
Date	Description
01-May	Poor ESP casing performance.High hopper levels.LHI ESP casing put on test rapping.Clean rapping brought forward.
12-May	Unit 5 shut down.
18-May	The unit synchronised on 2025/05/17 @ 15:55, therefore the emissions need to be below the limit 2025/05/20 @ 15:55 and
19-May	The unit synchronised on 2025/05/17 @ 15:55, therefore the emissions need to be below the limit 2025/05/20 @ 15:55 and
31-May	Poor ESP casing performance. High hopper levels.



Reasons:	
Date	Description
05-May	Correlation Test - High Emissions Test
07-May	Higher hopper levels and repairs of HFT radiators
08-May	Poor Casing performance , number of fields tripping and sparking
13-May	Poor Casing performance , number of fields tripping and sparking
16-May	Poor Casing performance , number of fields tripping and sparking
17-May	Poor Casing performance , number of fields tripping and sparking
18-May	Poor Casing performance due to high hopper levels which occurred
23-May	Poor Casing performance due to high hopper levels which occurred

Figure 7: Lethabo Unit 1 SO₂ Emissions - May 2025

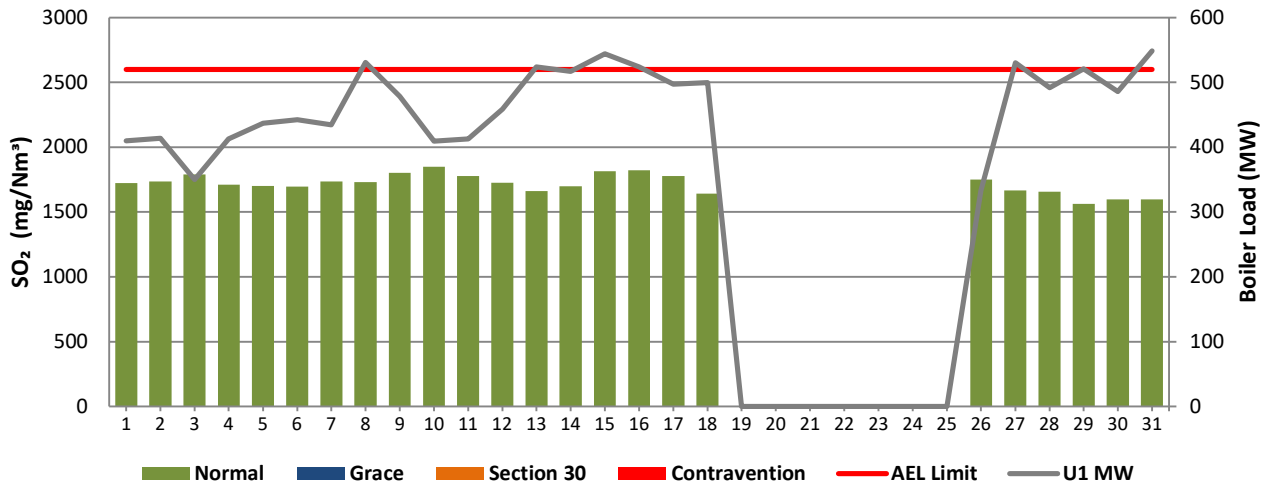


Figure 8: Lethabo Unit 2 SO₂ Emissions - May 2025

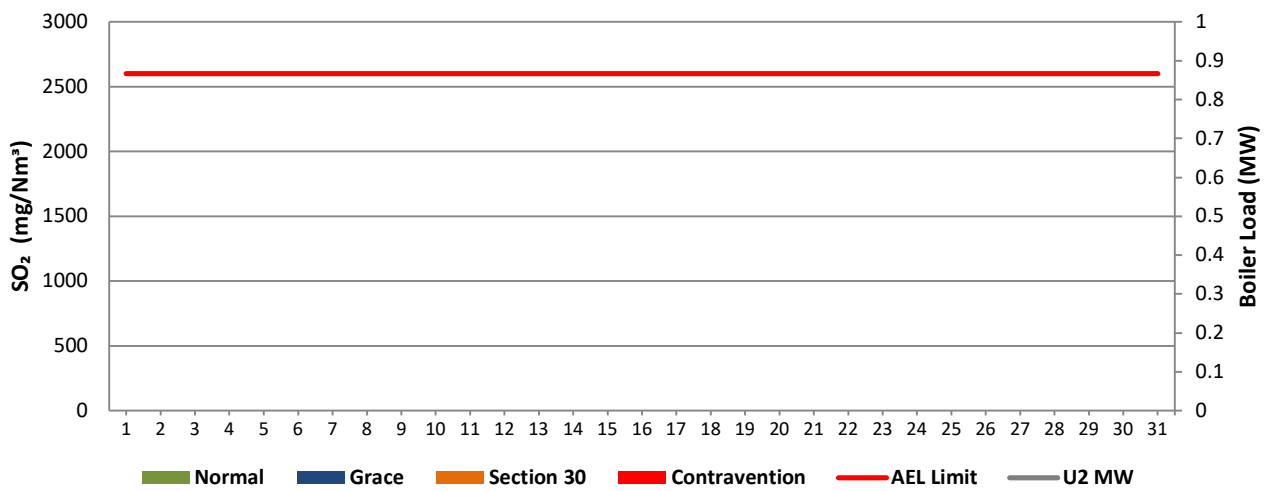


Figure 9: Lethabo Unit 3 SO₂ Emissions - May 2025

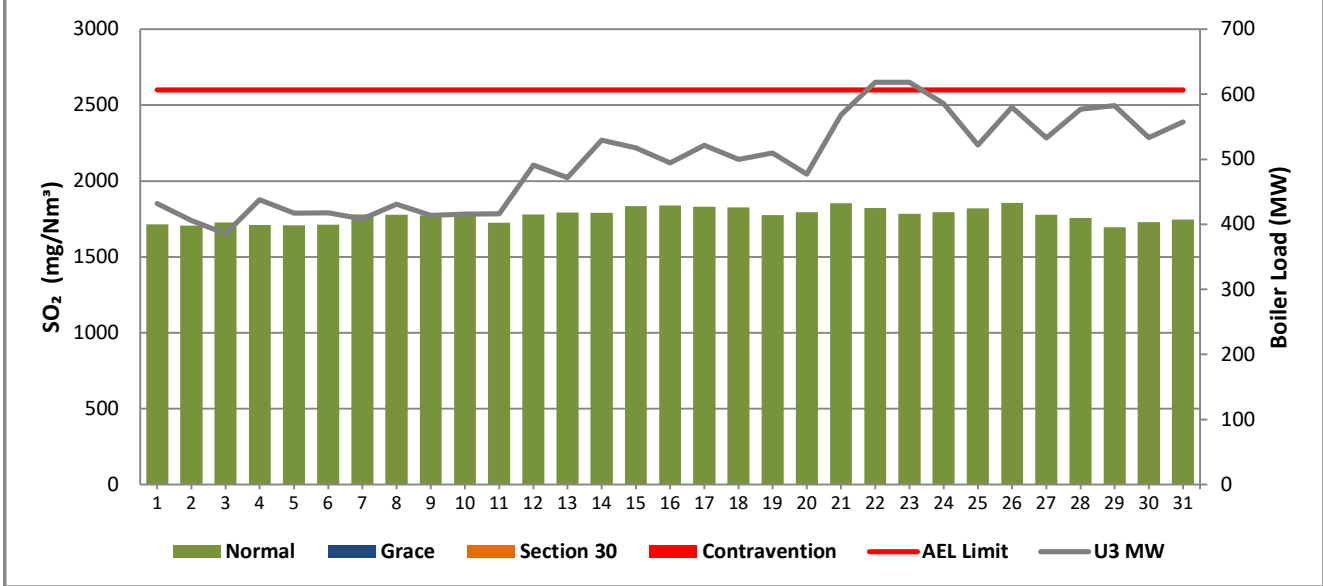


Figure 10: Lethabo Unit 4 SO₂ Emissions - May 2025

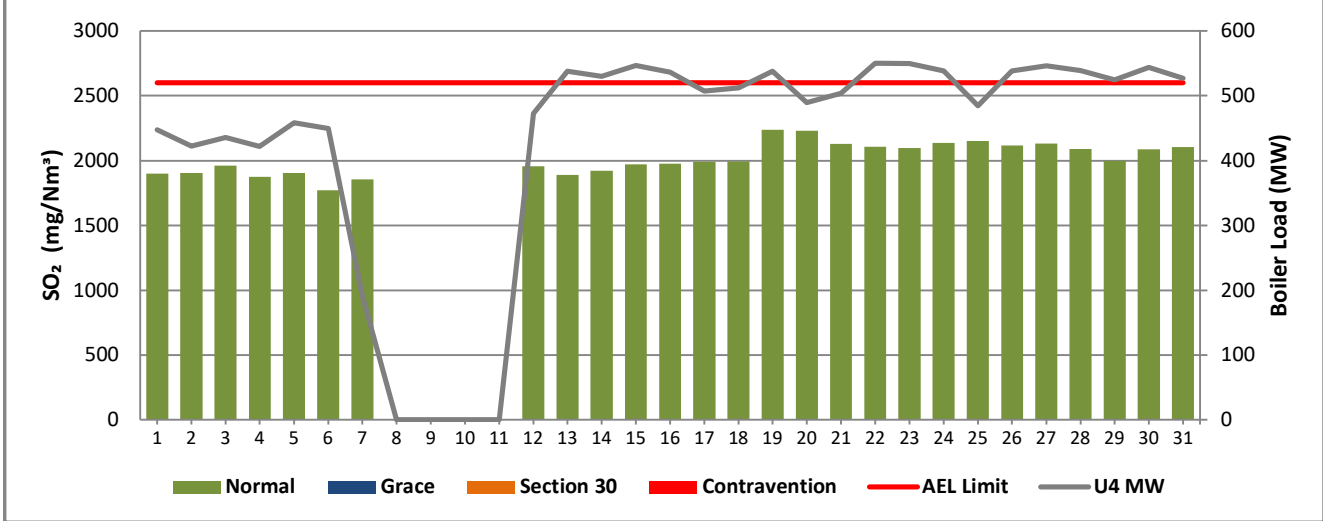


Figure 11: Lethabo Unit 5 SO₂ Emissions - May 2025

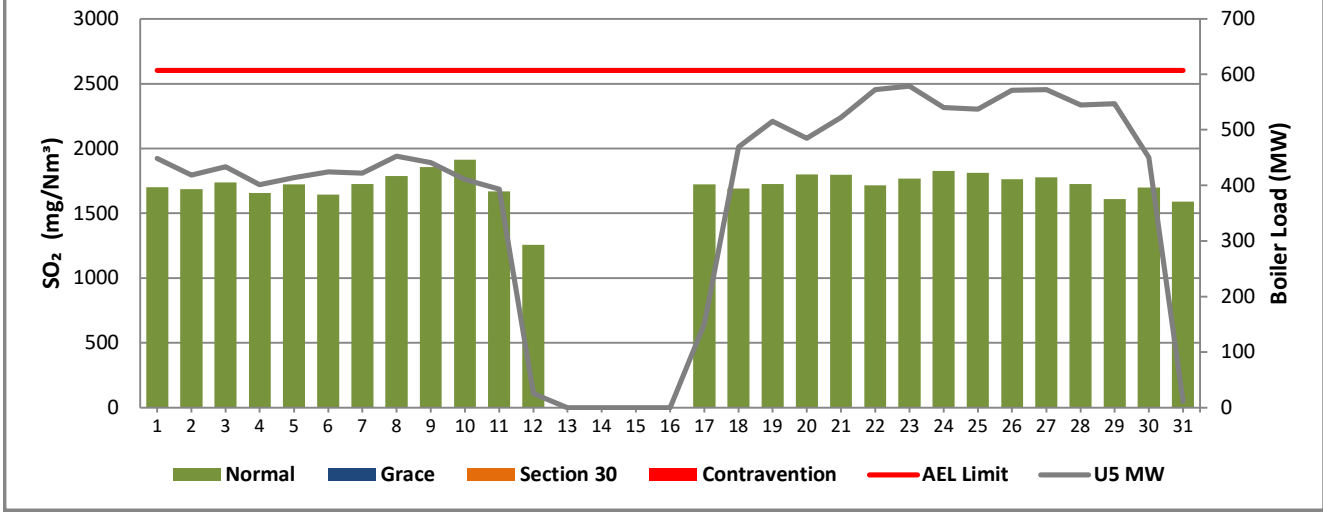


Figure 12: Lethabo Unit 6 SO₂ Emissions - May 2025

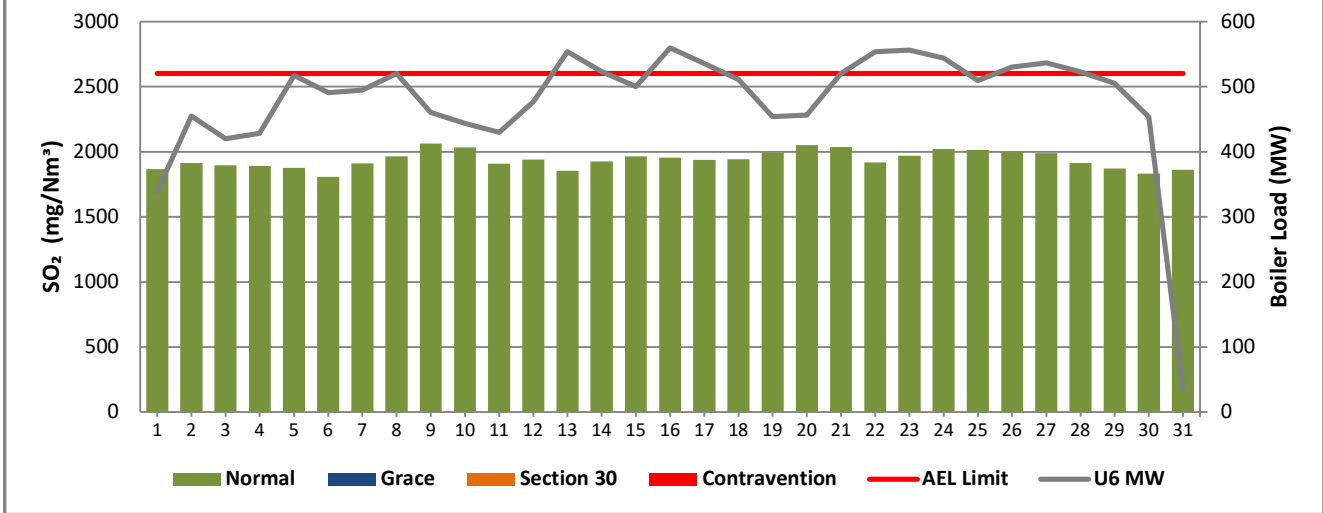


Figure 13: Lethabo Unit 1 NO_x Emissions - May 2025

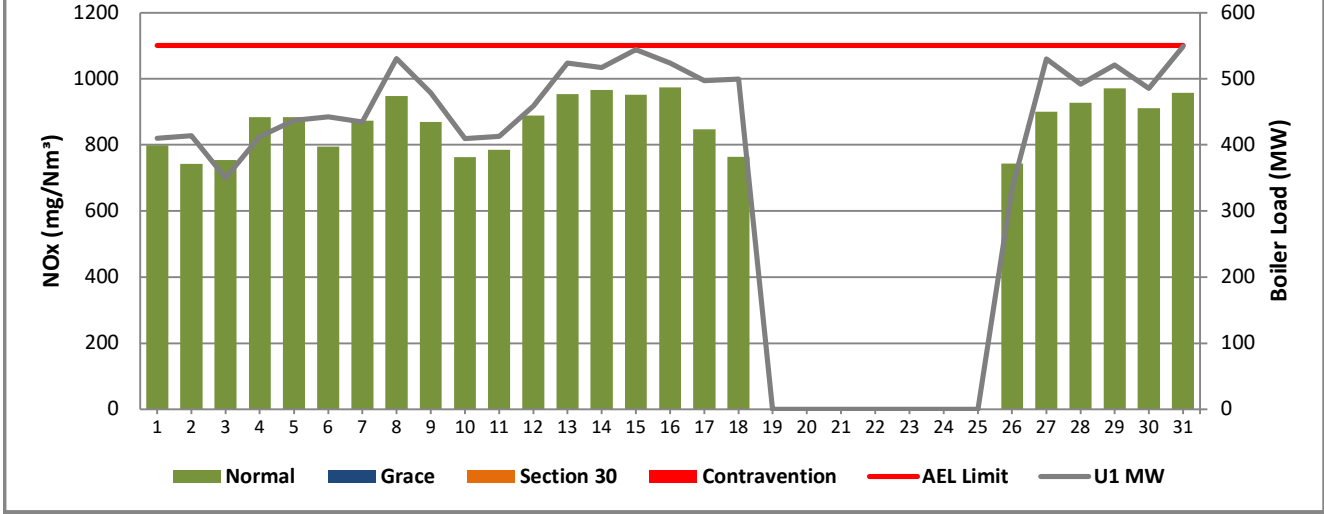


Figure 14: Lethabo Unit 2 NO_x Emissions - May 2025

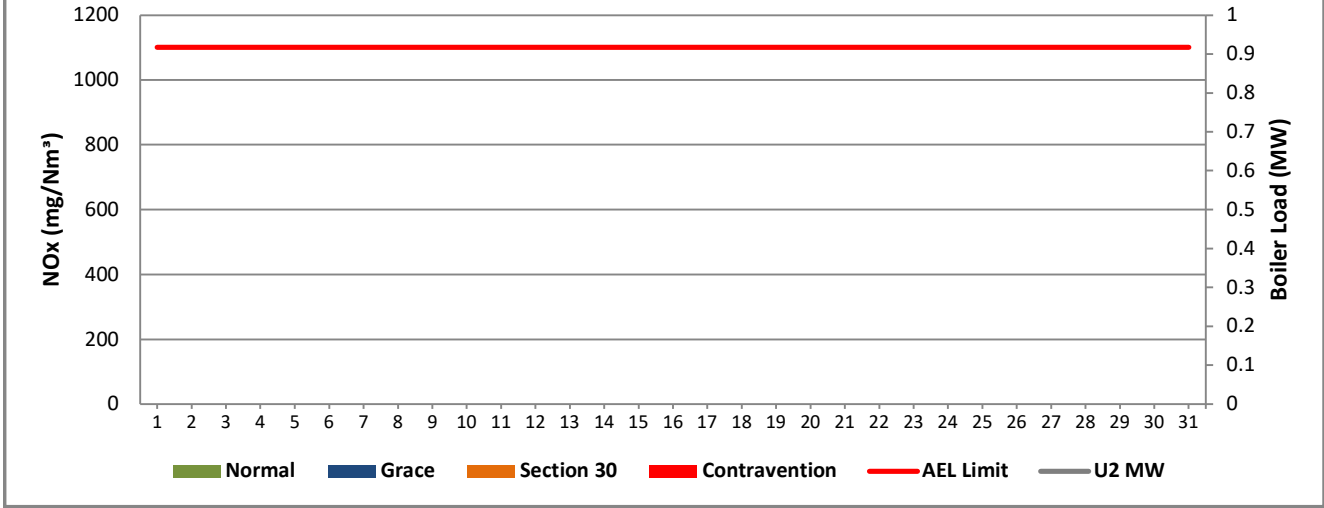


Figure 15: Lethabo Unit 3 NO_x Emissions - May 2025

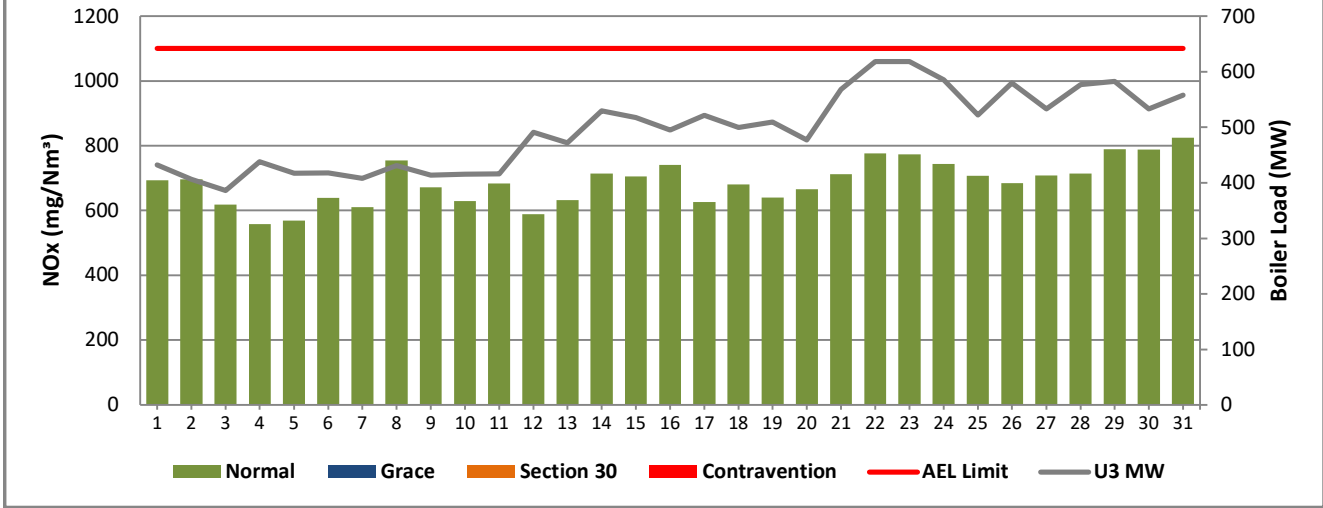


Figure 16: Lethabo Unit 4 NO_x Emissions - May 2025

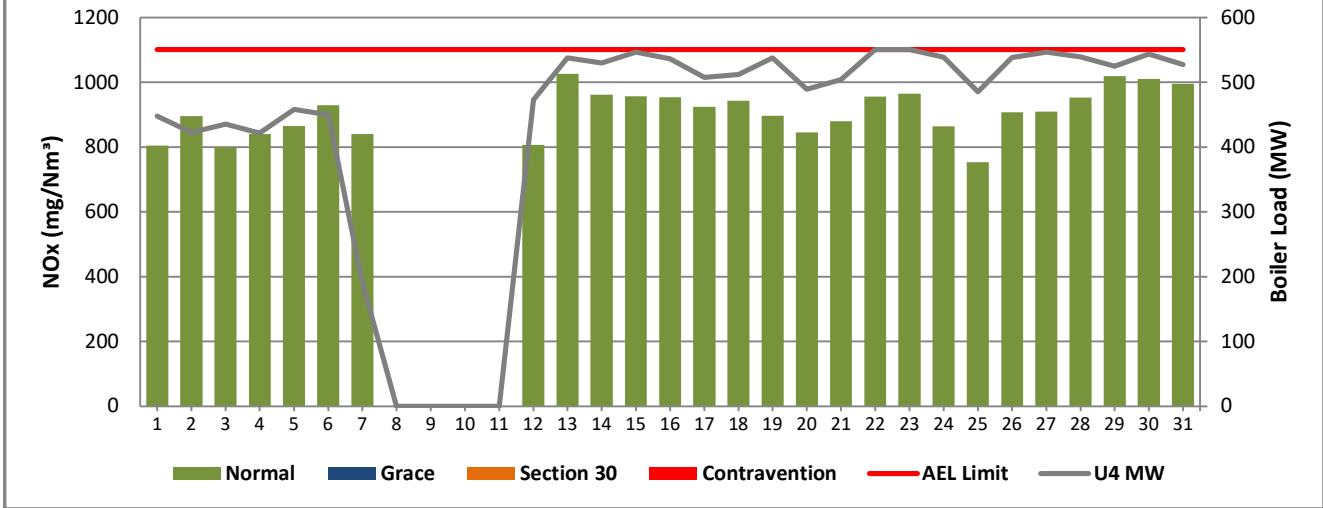


Figure 17: Lethabo Unit 5 NO_x Emissions - May 2025

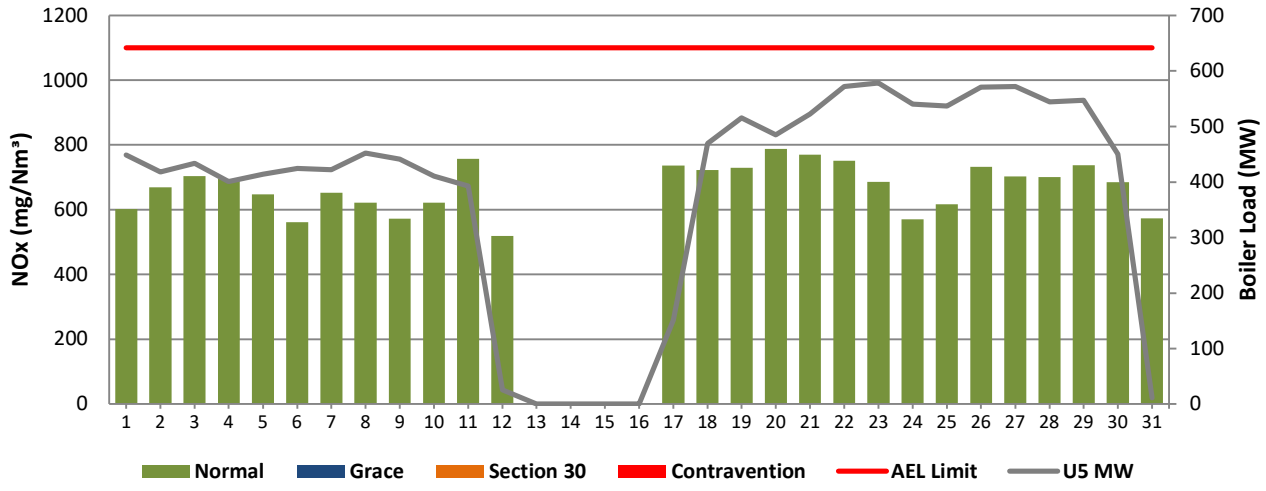
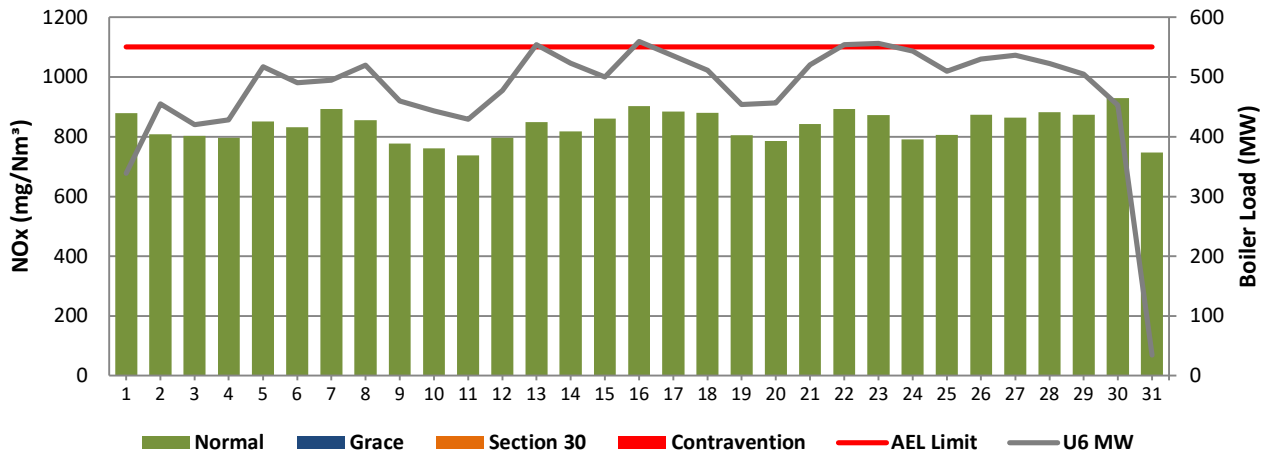


Figure 18: Lethabo Unit 6 NO_x Emissions - May 2025



7 SHUT-DOWN AND LIGHT-UP INFORMATION FOR MAY 2025

See Events sheet

8. MAINTENANCE

Unit 1				
Beginning of	2025/05/10 00:00:00			
Reason for Maintenance	RHO Casing repairs			
End (Time):	2025/05/10 20:05:00			
Duration	20:05:00			

Unit 2				
Beginning of				
Reason for Maintenance				
End (Time):				
Duration				

Unit 3				
Beginning of	2025/05/09 07:00:00			
Reason for Maintenance	RHO Casing Repairs			
End (Time):	2025/05/12 16:27:00			
Duration	81:27:00			

Unit 4				
Beginning of				
Reason for Maintenance				
End (Time):				
Duration				

Unit 5				
Beginning of				
Reason for Maintenance				
End (Time):				
Duration				

Unit 6				
Beginning of				
Reason for Maintenance				
End (Time):				
Duration				

9 COMPLAINTS

There were no complaints for this months

Source Code / Name	Root Cause Analysis	Calculation of Impacts / emissions associated with the incident	Dispersion modeling of pollutants where applicable	Measures implemented to prevent reoccurrence

10 GENERAL

CO2 and Velocity Monitors Low Reliability Units 1-6:

Due to correction of bad data as per internal emission data integrity review actions in 2021 and 2022. Bad Velocity data and Bad CO2 data were corrected/removed as per the review actions and findings.

Unit 1 Monitor Reliability

01/05/2025 -03/05/2025: PM monitor Reliability low due to monitor max out.

Unit 1 Monitor Reliability

07/05/2025 - 08/05/2025: PM monitor Reliability low due to monitor max out.

Unit 1 Monitor Reliability

10/05/2025: PM monitor Reliability low due to monitor max out.

Unit 1 Monitor Reliability

06/04/2025: PM monitor Reliability low due to electrical board issues.

Unit 1 Monitor Reliability

12/05/2025 - 17/05/2025: PM monitor Reliability low due to monitor max out.

Unit 5 Monitor Reliability

18/05/2025: PM monitor Reliability low due to monitor max out.

Unit 1, 3,4, 5 & 6 Gaseous Monitor Reliability

29/05/2025: Gas Monitor Reliability low (CIE outside plant was busy with foxboro server replacement, our CEMS data is linked there, hence the monitor unreliability)

Unit 1

On the 24/04/2025 to 18/05/2025, unit 1 registered a non-compliance as the unit exceeded for greater than 72 hrs light up conditions due to poor ESP performance, high hopper levels and DHP issues.

Unit 3

On the 22/04/2025 to 23/05/2025, unit 3 registered a non-compliance as the unit exceeded for greater than 72 hrs light up conditions due to poor ESP performance, high hopper levels, DHP issues.

ADDENDUM TO MONTHLY EMISSIONS REPORT

10. S30 INCIDENT OR LEGAL CONTRAVENTION REGISTER

To be completed in the case of a S30 incident or a legal contravention:

Unit no	Incident Start Date	Incident End Date	Incident Cause	Remedial action	S30 initial notification sent	Date S30 investigation report sent	Date DEA Acknowledgment	Date DEA Acceptable	Comments / Reference No.
3	02-May-25	23-May-25	HFT faults	HFT Repairs	06-May-25				HFT Resolved
1	15-May-25	18-May-25	Poor ESP performance, higher levels and DWP challenges	Unit was shutdown for casing repairs and high hopper levels was cleared					This legal contravention was covered under the LC which occurred from the 24/04/2025 to 18/05/2025

11. PARTICULATE EMISSIONS

EMISSION RATE (ACTUAL EMISSION/MWh GENERATED - kg/MWh)

MONTH	UNIT 1	UNIT 2	UNIT 3	UNIT 4	UNIT 5	UNIT 6	STATION
May-24	0.25	0.91	0.56	1.10	0.81	OFF	0.75
Jun-24	0.30	1.03	0.45	0.68	0.54	OFF	0.60
Jul-24	0.43	2.04	0.55	0.75	0.68	1.28	0.87
Aug-24	0.48	0.91	0.69	0.47	0.53	0.18	0.54
Sept-24	0.61	0.70	0.69	0.67	0.76	0.24	0.60
Oct-24	0.34	0.62	OFF	0.61	0.78	0.33	0.57
Nov-24	0.42	0.50	OFF	0.90	0.75	0.26	0.56
Dec-24	0.56	0.57	OFF	0.88	0.63	0.24	0.54
Jan-25	1.08	0.51	OFF	0.82	1.47	0.71	0.90
Feb-25	1.50	0.56	7.43	0.49	1.94	0.50	1.47
Mar-25	1.38	0.67	1.83	0.58	2.33	0.46	1.25
Apr-25	0.58	OFF	1.44	5.63	2.46	0.28	1.54
May-25	0.71	OFF	1.28	0.43	0.48	0.25	0.64

ADDENDUM TO MONTHLY EMISSIONS REPORT

12. DAILY EMISSIONS FIGURES

Final Dust Concentration (mg/Nm³)

Date	U1	U2	U3	U4	U5	U6	Limit (U1-U5)	Limit U6
01-May	139		293	117	120		100	50
02-May	139		267	72	90	44	100	50
03-May	139		191	59	87	38	100	50
04-May	139		181	76	85	36	100	50
05-May	137		159	104	73	63	100	50
06-May	117		170	86	52	48	100	50
07-May	139	0	138	48	53	76	100	50
08-May	137	0	139		72	56	100	50
09-May	119		590		81	45	100	50
10-May	134		680		61	48	100	50
11-May	87		527		71	37	100	50
12-May	133		565		243	43	100	50
13-May	139		212	52		51	100	50
14-May	139		185	46		49	100	50
15-May	139		142	59		47	100	50
16-May	139		158	57		54	100	50
17-May	139		158	58		56	100	50
18-May	139		170	70	762	53	100	50
19-May			198	109	128	45	100	50
20-May			179	95	49	46	100	50
21-May			152	58	50	49	100	50
22-May			184	60	60	47	100	50
23-May			79	68	64	52	100	50
24-May			130	96	58	48	100	50
25-May			115	55	60	43	100	50
26-May			134	73	82	46	100	50
27-May	129		66	71	88	43	100	50
28-May	58		99	66	81	43	100	50
29-May	89		149	72	96	39	100	50
30-May	39		90	74	54	38	100	50
31-May	66		88	60	212	32	100	50

ADDENDUM TO MONTHLY EMISSIONS REPORT

Final SO _x Concentration (mg/Nm ³)							
Date	U1	U2	U3	U4	U5	U6	Limit
01-May	1724		1713	1899	1700	1865	2600
02-May	1737		1706	1905	1687	1912	2600
03-May	1789		1727	1963	1738	1896	2600
04-May	1712		1710	1874	1655	1891	2600
05-May	1702		1708	1904	1722	1876	2600
06-May	1696		1712	1773	1644	1805	2600
07-May	1737		1779	1857	1727	1909	2600
08-May	1729		1778		1787	1965	2600
09-May	1802		1774		1857	2062	2600
10-May	1849		1775		1911	2033	2600
11-May	1779		1727		1667	1907	2600
12-May	1724		1780	1956	1255	1940	2600
13-May	1663		1794	1891		1854	2600
14-May	1699		1791	1923		1925	2600
15-May	1816		1835	1972		1965	2600
16-May	1822		1839	1977		1954	2600
17-May	1778		1832	1990	1722	1937	2600
18-May	1643		1826	1992	1691	1942	2600
19-May			1775	2239	1725	1993	2600
20-May			1795	2233	1798	2050	2600
21-May			1853	2129	1797	2035	2600
22-May			1824	2106	1714	1917	2600
23-May			1784	2097	1769	1969	2600
24-May			1795	2138	1826	2021	2600
25-May			1819	2151	1813	2015	2600
26-May	1750		1856	2117	1761	1994	2600
27-May	1666		1778	2133	1777	1988	2600
28-May	1655		1757	2091	1727	1912	2600
29-May	1564		1696	1997	1609	1871	2600
30-May	1598		1730	2088	1699	1832	2600
31-May	1597		1746	2104	1589	1862	2600

ADDENDUM TO MONTHLY EMISSIONS REPORT

Final NO _x Concentration (mg/Nm ³)							
Date	U1	U2	U3	U4	U5	U6	Limit
01-May	799		694	804	603	879	1100
02-May	743		697	895	670	808	1100
03-May	754		618	800	703	803	1100
04-May	884		558	841	696	797	1100
05-May	884		569	865	648	851	1100
06-May	795		639	929	562	832	1100
07-May	873		610	841	653	892	1100
08-May	947		755		622	855	1100
09-May	869		672		573	777	1100
10-May	763		629		622	761	1100
11-May	785		684		758	738	1100
12-May	889		588	806	519	796	1100
13-May	954		632	1026		850	1100
14-May	966		714	961		818	1100
15-May	951		705	957		860	1100
16-May	974		741	953		903	1100
17-May	848		626	924	737	884	1100
18-May	763		680	943	722	881	1100
19-May			641	896	730	805	1100
20-May			666	845	788	786	1100
21-May			712	879	770	842	1100
22-May			777	955	751	893	1100
23-May			773	965	686	873	1100
24-May			744	864	571	791	1100
25-May			707	754	617	806	1100
26-May	744		685	908	733	873	1100
27-May	901		708	909	703	865	1100
28-May	927		715	953	701	882	1100
29-May	971		789	1018	737	874	1100
30-May	911		788	1011	686	928	1100
31-May	958		825	995	574	747	1100

ADDENDUM TO MONTHLY EMISSIONS REPORT

13. AVAILABILITY

ESP utilisation

Availability												
Month	Unit 1	Days Affected	Unit 2	Days Affected	Unit 3	Days Affected	Unit 4	Days Affected	Unit 5	Days Affected	Unit 6	Days Affected
May-24	100.00%	0.0	97.91%	2.6	100.00%	0.0	97.67%	2.9	99.38%	0.8	100.00%	0.00%
Jun-24	100.00%	0.00	99.17%	1.00	98.09%	2.29	98.32%	2.01	100.00%	0.00	100.00%	0.00
Jul-24	100.00%	0.0	100.00%	0.0	100.00%	0.0	100.00%	0.0	100.00%	0.0	100.00%	0.00%
Aug-24	98.59%	1.8	100.00%	0.0	99.21%	1.0	100.00%	0.0	99.84%	0.2	100.00%	0.00%
Sept-24	98.55%	1.74	99.84%	0.19	100.00%	0.00	99.12%	1.06	99.16%	1.01	100.00%	0.00
Oct-24	99.19%	1.0	100.00%	0.0	100.00%	0.0	100.00%	0.0	97.67%	2.9	100.00%	0.00%
Nov-24	0.00%	0.00	0.00%	0.00	0.00%	0.00	0.00%	0.00	0.00%	0.00	0.00%	0.00
Dec-24	99.39%	0.76	99.24%	0.95	100.00%	0.00	99.18%	1.01	99.96%	0.05	99.27%	0.91
Jan-25	98.99%	1.3	100.00%	0.0	100.00%	0.0	100.00%	0.0	98.40%	2.0	100.00%	0.0
Feb-25	99.18%	0.9	99.84%	0.2	100.00%	0.0	100.00%	0.0	100.00%	0.0	98.90%	1.2
Mar-25	98.08%	2.4	99.27%	0.9	98.99%	1.3	100.00%	0.0	95.52%	5.6	100.00%	0.0
Apr-25	98.21%	2.1	100.00%	0.0	100.00%	0.0	100.00%	0.0	97.50%	3.0	98.48%	1.8
May-25	99.33%	0.8	100.00%	0.0	97.26%	3.4	100.00%	0.0	100.00%	0.0	100.00%	0.0

SO3 plant utilisation

Availability												
Month	Unit 1	Days Affected	Unit 2	Days Affected	Unit 3	Days Affected	Unit 4	Days Affected	Unit 5	Days Affected	Unit 6	Days Affected
May-24	99.45%	0.2	99.87%	0.0	96.37%	1.1	99.87%	0.0	100.00%	0.0	Off-line	Off-line
Jun-24	97.08%	0.88	69.03%	9.29	100.00%	0.00	99.34%	0.20	99.77%	0.07	Off-line	Off-line
Jul-24	98.30%	0.5	41.43%	18.2	99.73%	0.1	99.58%	0.1	98.39%	0.5	53.66%	14.37
Aug-24	99.46%	0.2	91.70%	2.6	100.00%	0.0	97.98%	0.6	99.59%	0.1	96.68%	1.03
Sept-24	100.00%	0.0	89.45%	3.2	99.33%	0.20	99.84%	0.0	99.58%	0.1	99.92%	0.02
Oct-24	99.85%	0.0	95.65%	1.3	Off-line	Off-line	98.92%	0.3	93.82%	1.9	99.59%	0.13
Nov-24	99.99%	0.0	96.60%	1.0	Off-line	Off-line	99.17%	0.3	97.46%	0.8	99.21%	0.24
Dec-24	52.80%	14.6	27.08%	22.6	Off-line	Off-line	77.33%	7.0	66.67%	10.3	60.94%	12.11
Jan-25	95.59%	1.4	93.50%	2.0	Off-line	Off-line	96.18%	1.2	90.28%	3.0	94.33%	1.8
Feb-25	91.37%	2.4	95.28%	1.3	67.36%	9.14	95.45%	1.3	91.35%	2.4	97.77%	0.6
Mar-25	98.52%	0.5	96.36%	1.1	85.05%	4.63	98.61%	0.4	99.91%	0.0	88.42%	3.6
Apr-25	95.63%	1.3	OFF	OFF	89.52%	3.15	85.62%	4.3	88.61%	3.4	99.78%	0.1
May-25	95.99%	1.2	OFF	OFF	98.12%	0.58	99.01%	0.3	99.52%	0.1	98.36%	0.5

ADDENDUM TO MONTHLY EMISSIONS REPORT

Particulate Emission Monitors

Availability						
	Unit 1	Unit 2	Unit 3	Unit 4	Unit 5	Unit 6
May-24	98.93%	93.01%	97.45%	91.88%	95.47%	OFF
Jun-24	98%	87%	97%	97%	99%	OFF
Jul-24	90.95%	73.05%	97.04%	95.37%	98.85%	61.98%
Aug-24	95.70%	91.44%	99.38%	99.60%	98.95%	99.58%
Sept-24	98.11%	94.42%	100.00%	98.42%	96.20%	99.64%
Oct-24	99.65%	94.32%	OFF	98.75%	96.51%	98.18%
Nov-24	99.43%	99.40%	OFF	99.31%	94.41%	98.54%
Dec-24	100.00%	96.61%	OFF	98.22%	96.26%	99.60%
Jan-25	96.64%	98.67%	OFF	87.85%	92.93%	99.02%
Feb-25	98.72%	97.70%	85.64%	99.62%	93.53%	98.72%
Mar-25	93.15%	96.04%	96.08%	99.85%	92.61%	97.36%
Apr-25	98.70%	OFF	99.50%	90.90%	96.10%	99.10%
May-25	100.00%	OFF	98.70%	100.00%	98.90%	100.00%

Gaseous Emission Monitors

Availability												
Month	Unit 1		Unit 2		Unit 3		Unit 4		Unit 5		Unit 6	
	SOx	NOx	SOx	NOx	SOx	NOx	SOx	NOx	SOx	NOx	SOx	NOx
May-24	100.0%	100.0%	100.0%	100.0%	100.0%	100.0%	98.8%	98.8%	98.4%	98.4%	OFF	OFF
Jun-24	100.0%	100.0%	100.0%	100.0%	100.0%	100.0%	100.0%	100.0%	100.0%	100.0%	OFF	OFF
Jul-24	99.7%	99.9%	100.0%	100.0%	100.0%	100.0%	99.5%	99.7%	100.0%	100.0%	73.4%	70.8%
Aug-24	99.9%	100.0%	99.8%	100.0%	100.0%	100.0%	100.0%	100.0%	100.0%	100.0%	100.0%	100.0%
Sept-24	100.0%	100.0%	100.0%	99.7%	100.0%	100.0%	100.0%	100.0%	100.0%	100.0%	100.0%	100.0%
Oct-24	99.8%	100.0%	99.6%	99.7%	0.0%	0.0%	100.0%	100.0%	100.0%	100.0%	99.7%	99.7%
Nov-24	100.0%	100.0%	100.0%	100.0%	0.0%	0.0%	100.0%	100.0%	100.0%	100.0%	99.9%	100.0%
Dec-24	57.5%	57.5%	37.5%	37.5%	0.0%	0.0%	79.7%	79.7%	66.7%	66.7%	65.6%	65.7%
Jan-25	99.3%	99.1%	99.3%	99.3%	0.0%	0.0%	100.0%	96.4%	100.0%	100.0%	100.0%	100.0%
Feb-25	98.2%	100.0%	100.0%	99.6%	86.1%	85.2%	96.0%	96.0%	94.6%	94.6%	96.2%	96.2%
Mar-25	93.8%	99.9%	100.0%	100.0%	100.0%	100.0%	100.0%	100.0%	100.0%	100.0%	100.0%	100.0%
Apr-25	98.6%	98.6%	OFF	OFF	98.6%	98.6%	92.6%	91.9%	96.1%	99.2%	99.2%	99.2%
May-25	97.7%	97.7%	OFF	OFF	98.1%	98.1%	97.5%	97.5%	97.8%	97.8%	98.1%	98.1%

Oxygen Monitor Availability

	Unit 1	Unit 2	Unit 3	Unit 4	Unit 5	Unit 6
May-24	99.97%	100.00%	99.98%	98.79%	98.31%	OFF
Jun-24	100.00%	100.00%	100.00%	99.55%	36.78%	OFF
Jul-24	99.89%	100.00%	100.00%	100.00%	99.84%	50.17%
Aug-24	99.87%	99.80%	99.87%	99.87%	100.00%	99.48%
Sept-24	100.00%	99.90%	100.00%	99.86%	99.72%	99.70%
Oct-24	99.23%	99.55%	0.00%	99.87%	94.89%	99.28%
Nov-24	100.00%	100.00%	0.00%	99.86%	84.89%	99.15%
Dec-24	57.50%	37.50%	0.00%	79.71%	66.67%	65.73%
Jan-25	99.55%	99.50%	0.00%	98.40%	99.43%	82.47%
Feb-25	99.70%	99.24%	85.19%	95.83%	94.39%	60.94%
Mar-25	100.00%	100.00%	100.00%	100.00%	99.81%	99.87%
Apr-25	98.74%	OFF	98.44%	92.56%	99.03%	99.00%
May-25	9738.08%	OFF	9798.39%	9753.09%	9753.70%	9798.39%

ADDENDUM TO MONTHLY EMISSIONS REPORT

14. EFFICIENCY

	ESP Efficiency (%)					
	Unit 1	Unit 2	Unit 3	Unit 4	Unit 5	Unit 6
May-24	99.970%	100.000%	99.979%	98.790%	98.313%	OFF
Jun-24	100.00%	100.00%	100.00%	99.55%	36.78%	OFF
Jul-24	99.885%	100.000%	100.000%	100.000%	99.840%	50.170%
Aug-24	99.866%	99.802%	99.866%	99.866%	100.000%	99.476%
Sept-24	100.000%	99.899%	100.000%	99.856%	99.722%	99.702%
Oct-24	99.228%	99.546%	0.000%	99.866%	94.892%	99.280%
Nov-24	100.000%	100.000%	0.000%	99.861%	84.886%	99.147%
Dec-24	57.500%	37.500%	0.000%	79.710%	66.667%	65.726%
Jan-25	99.554%	99.500%	0.000%	98.397%	99.432%	82.471%
Feb-25	99.702%	99.242%	85.188%	95.833%	94.391%	60.938%
Mar-25	100.000%	100.000%	100.000%	100.000%	99.812%	99.866%
Apr-25	98.818%	OFF	98.484%	98.074%	99.067%	99.877%
May-25	97.740%	OFF	99.440%	99.820%	99.780%	99.870%

15. REMARKS

UNIT	MWLOSS	REASON	ACTUALSTARTDATE	ACTUALENDDATE
1	130	High dust hopper levels	2025/05/01 00:00:00	2025/05/05 07:28:00
1	80	RHO casing repairs	2025/05/10 00:00:00	2025/05/10 20:05:00
1	178	High stack emissions.	2025/05/11 18:19:00	2025/05/12 14:35:00
1	81	High stack emissions.	2025/05/12 14:36:00	2025/05/12 17:02:00
1	80	High dust hopper levels	2025/05/13 00:04:00	2025/05/13 04:36:00
1	169	High stack emissions.	2025/05/13 10:23:00	2025/05/13 14:49:00
1	70	High dust hopper levels	2025/05/13 23:59:00	2025/05/14 05:17:00
1	593	AM: IN	2025/05/18 23:01:00	2025/05/26 06:15:00
1	80	Clean rapping.	2025/05/27 19:59:00	2025/05/27 22:30:00
1	80	High stack emissions.	2025/05/27 22:30:00	2025/05/28 17:04:00
1	28	High stack emissions	2025/05/28 17:04:00	2025/05/29 04:03:00
1	180	High stack emissions	2025/05/29 20:04:00	2025/05/29 22:07:00
1	200	High stack emissions	2025/05/29 22:07:00	2025/05/30 02:35:00
2	593	MGO ESP & SO3	2025/05/01 00:00:00	2025/05/31 23:59:59
3	94	High dust hopper levels.	2025/05/01 00:00:00	2025/05/01 04:19:00
3	194	High dust hopper levels.	2025/05/01 04:19:00	2025/05/01 17:28:00
3	100	High hopper levels	2025/05/01 17:28:00	2025/05/02 19:32:00
3	49	EF:High stack emissions	2025/05/05 16:48:00	2025/05/06 10:57:00
3	118	RH Outer precip casing repairs	2025/05/09 07:00:00	2025/05/12 16:27:00
3	200	Emissions test.	2025/05/27 00:15:00	2025/05/27 01:16:00
3	186	Emission test	2025/05/28 01:16:00	2025/05/28 04:58:00
3	187	emissions test.	2025/05/28 00:02:00	2025/05/28 05:00:00
4	141	High dust hopper levels.	2025/05/01 00:00:00	2025/05/01 05:41:00
4	140	EF:High stack emissions	2025/05/02 15:22:00	2025/05/03 03:29:00
4	107	EF:High stack emissions	2025/05/03 03:29:00	2025/05/03 03:48:00
4	56	EF:High stack emissions	2025/05/03 03:48:00	2025/05/03 04:07:00
4	128	EF:High stack emissions	2025/05/03 04:07:00	2025/05/03 04:29:00
4	119	EF:High stack emissions	2025/05/03 04:29:00	2025/05/03 04:55:00
4	593	Boiler tube leak.	2025/05/07 11:35:00	2025/05/17 23:57:00
5	593	Repair Main Turbine overspeed rings	2025/05/12 02:05:00	2025/05/17 15:55:00
5	593	T&F coal conveyor O/C	2025/05/31 00:58:00	2025/05/31 23:59:59
6	593	FRF flexible pipe replacement.	2025/05/01 00:00:00	2025/05/01 07:09:00
6	70	High stack emissions	2025/05/18 13:36:00	2025/05/20 05:26:00
6	67	EF:High stack emissions	2025/05/23 22:55:00	2025/05/24 00:33:00