



Mr. Mcebo Mkhathshwa
Air Quality Officer
Fezile Dabi District Municipality
P.O Box 10
Sasolburg
1947

Date: 18 March 2026

Enquiries:
S Xulu
Tel +27 16 457 5947

LRP01PLA000_0483/2025/10/10

Dear Mr. Mkhathshwa

LETHABO POWER STATION EMISSION MONTHLY REPORT FOR SEPTEMBER 2025

Please find attached Lethabo Power Station emission report for the month of September 2025.

Also attached are the Ambient Air Quality Monitoring Report, Complaints Register and the Fugitive Dust Fallout Monitoring Report for September 2025.

For any additional information please do not hesitate to contact us.

Yours sincerely

Karabo Rakgolela

pp **GENERAL MANAGER**

Generation Division
Lethabo Power Station
Viljoensdrif / Deneysville Free State
Private Bag X415 Vereeniging 1930 SA
Tel +27 16 457 5111 Fax +27 16 457 5712 www.eskom.co.za
Eskom Holdings SOC Ltd Reg No 2002/015527/30

Report name: **Lethabo Power Station
SEPTEMBER 2025
Emission Report**

Reference number: **LRP01PLA000_0483/2025/10/10**
Document Type: **Report**
Area of Applicability: **Environment**
Report Date: **October-2025**
Classification: **Controlled Disclosure**

Signatures:

Compiled by:



S Zulu
Boiler Engineer

Date: 18/03/2026

Verified by :



S Xulu
Environmental Officer

Date: 2026/03/18

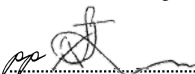
Reviewed by:



E Govinden pp
BPE Manager

Date: 2026/03/20

Reviewed by:



P Malinga
PE Manager

Date: 2026/03/23

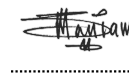
Reviewed by:



L Nel
C&I Manager

Date: 2026-03-23

Reviewed by:



M Hariram
Environmental Manager

Date: 2026/03/24

Approved by:



pp
H Sewsunker
Technical Manager

Date: 2026-04-01

Reviewed by:



T. Njapha
Engineering Manager

Date: 2026-03-27

CONTROLLED DISCLOSURE

When downloaded from the database, this document is uncontrolled and it is the responsibility of the user to ensure that it is the same as the authorised revision on the data base
Copyright © 2008, Eskom Generation, Lethabo Power Station

LETHABO POWER STATION MONTHLY EMISSIONS REPORT

Atmospheric Emission License: FDDM-MET-2011-08-P1



1 RAW MATERIALS AND PRODUCTS

Raw Materials and Products	Raw Material Type	Units	Max Permitted Consumption Rate	Consumption Rate Sept-2025
	Coal	Tons	2 000 000	1 137 210
	Fuel Oil	Tons	1 700	1143.240

Production Rates	Product / By-Product Name	Units	Max Production Capacity Permitted	Indicative Production Rate Sept-2025
	Energy	GWh	2 743.200	1 584.270
	Ash	Tons	770 000	407 462.318
	RE Ash	kg/MWh	not specified	0.595

Note: Max energy rate = AEL capacity [3,810 MW] × 24 Hrs × Days in MONTH ÷ 1,000 (to convert to GWh).

2 ENERGY SOURCE CHARACTERISTICS

Coal Characteristic	Units	Stipulated Range	Monthly Average Content
Sulphur Content	%	0.6 TO >2.6	0.780
Ash Content	%	21 TO <46	35.830

Note: The "standard" is not a fixed limit but an optimal guideline. It may vary with coal quality. The stipulated range reflects station acceptance test values.

3 EMISSION LIMITS (mg/Nm³)

Associated Unit/Stack	Daily Limit		
	PM	SO ₂	NO _x
Unit 1	100	2600	1100
Unit 2	100	2600	1100
Unit 3	100	2600	1100
Unit 4	100	2600	1100
Unit 5	100	2600	1100
Unit 6	50	2600	1100

4 ABATEMENT TECHNOLOGY (%)

Associated Unit/Stack	Technology Type	ESP Efficiency	Technology Type	SO ₃ Plant Utilization
Unit 1	ESP + SO ₃	99.813%	SO ₃	99.2%
Unit 2	ESP + SO ₃	99.902%	SO ₃	95.0%
Unit 3	ESP + SO ₃	99.883%	SO ₃	99.3%
Unit 4	ESP + SO ₃	99.754%	SO ₃	95.1%
Unit 5	ESP + SO ₃	98.866%	SO ₃	86.9%
Unit 6	ESP + SO ₃	99.858%	SO ₃	98.7%

Note: The ESP plant does not have a bypass mode; therefore, it operates at 100% utilization.

5 DATA RELIABILITY (%)

Associated Unit/Stack	PM	SO ₂	NO	O ₂
Unit 1	100.0	92.9	94.0	93.9
Unit 2	99.7	92.9	90.4	92.9
Unit 3	100.0	94.3	91.8	93.1
Unit 4	99.9	94.3	94.3	94.2
Unit 5	92.7	98.1	98.1	98.1
Unit 6	99.6	92.5	92.5	92.5

Note: NO_x emissions are measured as NO in PPM. The final NO_x value is expressed as total NO₂ equivalent.

6 EMISSION PERFORMANCE

Table 6.1: Monthly tonnages for September 2025

Associated Unit/Stack	PM (tons)	SO ₂ (tons)	NO _x (tons)
Unit 1	161.8	3 580	2 110
Unit 2	37.3	1 862	650
Unit 3	94.5	4 470	1 991
Unit 4	191.6	4 551	1 991
Unit 5	387.4	2 256	708
Unit 6	70.3	2 530	1 311
SUM	942.91	19 248	8 762

Table 6.2: PM AEL Daily Compliance - September 2025

Associated Unit/Stack	Normal	Grace	Section 30	NC	Total Exceedance	Mnth Avg (mg/Nm³)
Unit 1	0	0	0	0	0	76.7
Unit 2	0	0	0	0	0	40.6
Unit 3	0	0	0	0	0	44.3
Unit 4	0	0	0	0	0	93.6
Unit 5	0	0	0	0	0	493.4
Unit 6	0	0	0	0	0	95.5
SUM	0	0	0	0	0	

Table 6.3: SO₂ AEL Daily Compliance - September 2025

Associated Unit/Stack	Normal	Grace	Section 30	NC	Total Exceedance	Mnth Avg (mg/Nm³)
Unit 1	0	0	0	0	0	1 702.0
Unit 2	0	0	0	0	0	1 724.0
Unit 3	0	0	0	0	0	2 189.3
Unit 4	0	0	0	0	0	2 209.3
Unit 5	0	0	0	0	0	2 226.2
Unit 6	0	0	0	0	0	1 926.8
SUM	0	0	0	0	0	

Table 6.4: NO_x AEL Daily Compliance - September 2025

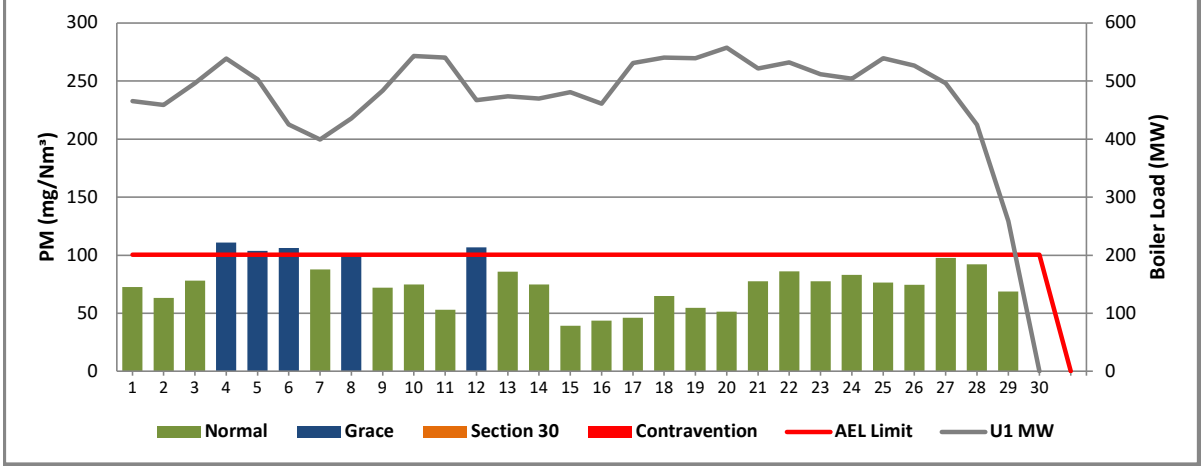
Associated Unit/Stack	Normal	Grace	Section 30	NC	Total Exceedance	Mnth Avg (mg/Nm³)
Unit 1	0	0	0	0	0	1 000.0
Unit 2	0	0	0	0	0	579.7
Unit 3	0	0	0	0	0	974.0
Unit 4	0	0	0	0	0	959.1
Unit 5	0	0	0	0	0	697.9
Unit 6	0	0	0	0	0	992.9
SUM	0	0	0	0	0	

Note: Daily limit compliance is shown in the bar charts; monthly compliance is summarized in the table above.

Table 6.5: Legend Description

Condition	Colour	Description
Normal	GREEN	Emissions below Emission Limit Value (ELV)
Grace	BLUE	Emissions above the ELV during grace period
Section 30	ORANGE	Emissions above ELV during a NEMA S30 incident
Contravention	RED	Emissions above ELV but outside grace or S30 incident conditions

Figure 1: Lethabo Unit 1 PM Emissions - September 2025



Reasons:	
Date	Description
04-Sept	Poor ESP casing performance. Clean rapping brought forward. PF sampling done.
05-Sept	Poor ESP casing performance. Clean rapping done.
06-Sept	Poor ESP casing performance. Test rapping done for 5 mins. Clean rapping done.
08-Sept	Poor ESP casing performance. LHO casing outage.
12-Sept	Poor ESP casing performance. LHI casing outage.

Figure 2: Lethabo Unit 2 PM Emissions - September 2025

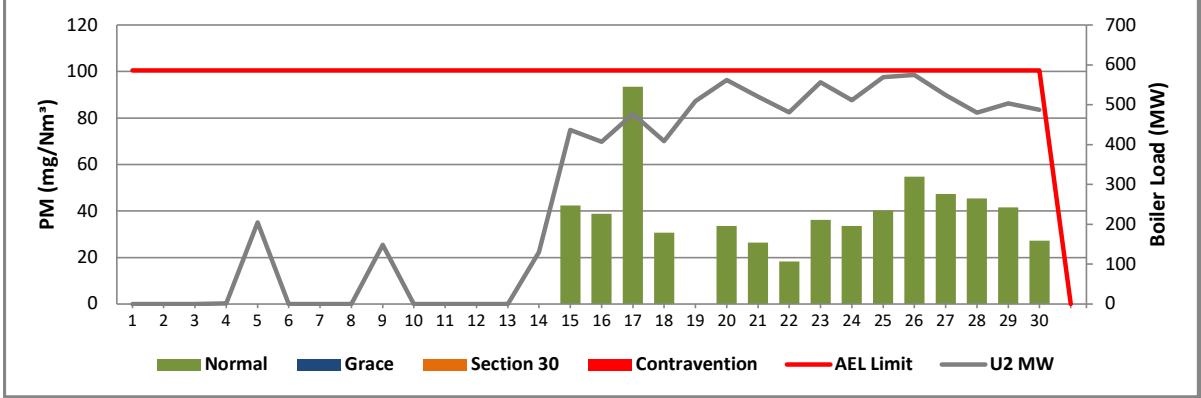


Figure 3: Lethabo Unit 3 PM Emissions - September 2025

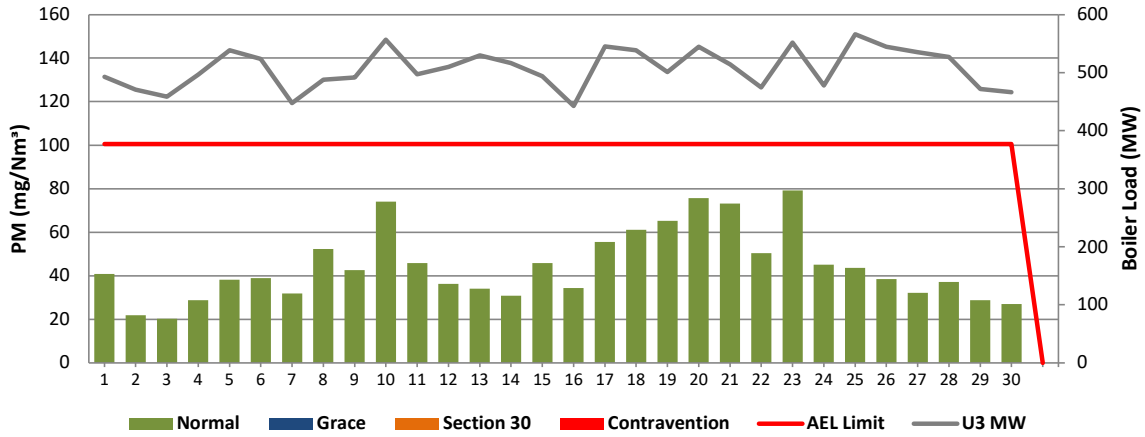
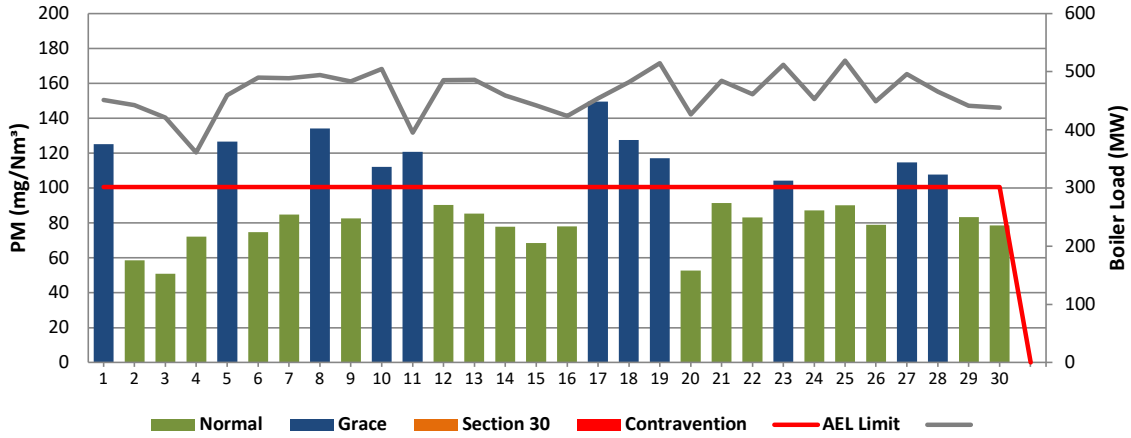
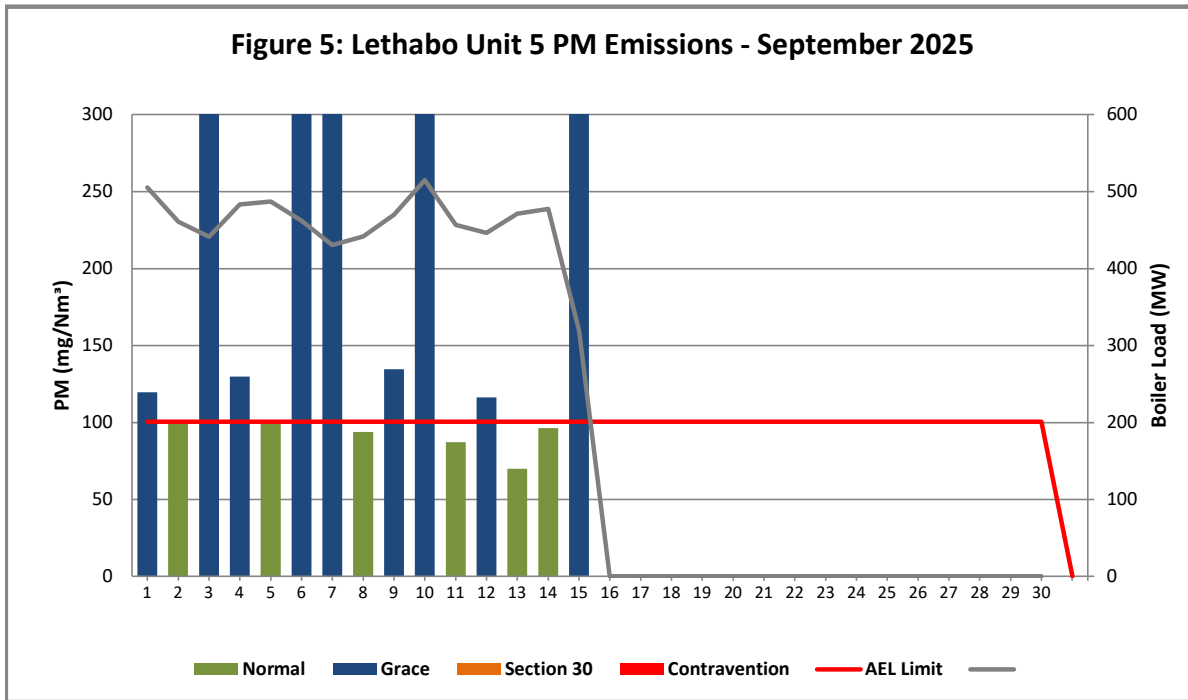


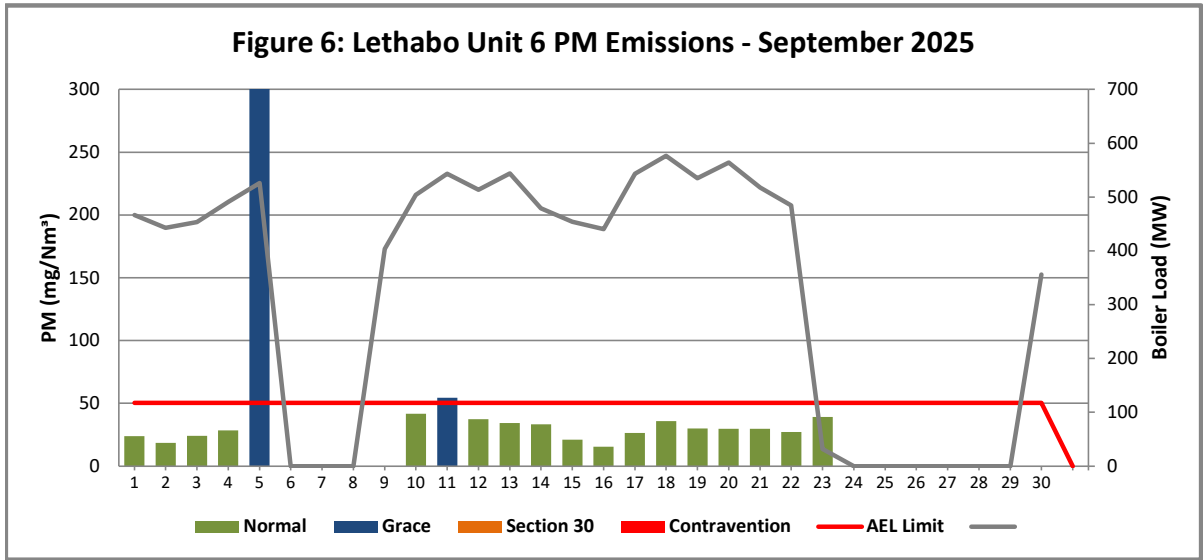
Figure 4: Lethabo Unit 4 PM Emissions - September 2025



Reasons:	
Date	Description
01-Sept	The unit synchronised on 2025/08/31 @ 15:16, therefore the emissions need to be below the limit 2025/09/03 @ 15:16 and remain below the limit until 2025/09/04
05-Sept	Poor ESP casing performance.
08-Sept	Poor ESP casing performance.
10-Sept	SO3 plant off due to low load.Poor ESP casing performance.
11-Sept	Low load conditions due to 1 x EFP running & BFPT tripped.
17-Sept	Poor ESP casing performance.RHO casing outage.
18-Sept	Poor ESP casing performance.RHO casing outage.Clean rapping done.
19-Sept	Poor ESP casing performance.
23-Sept	Poor ESP casing performance.
27-Sept	Poor ESP casing performance.
28-Sept	Poor ESP casing performance.



Reasons:	
Date	Description
01-Sept	Poor ESP casing performance.High hopper levels.
03-Sept	Poor ESP casing performance.High hopper levels.SO3 plant issues.
04-Sept	PF sampling at high loads.Manual rapping done.Poor ESP casing performance.
06-Sept	Poor ESP casing performance.Test rapping done for 20 minutes.
07-Sept	Poor ESP casing performance.Test rapping done.
09-Sept	Sulphur flow issues.Poor ESP casing performance.
10-Sept	Poor ESP casing performance.Test rapping done.
12-Sept	Sulphur flow control manually. Poor ESP casing performance.
15-Sept	Poor ESP casing performance. Boiler tripped through boiler push button for ESP upgrade project commencement.



Reasons:	
Date	Description
05-Sept	Unit 6 shutdown
11-Sept	High hopper levels.Poor ESP casing performance.

Figure 7: Lethabo Unit 1 SO₂ Emissions - September 2025

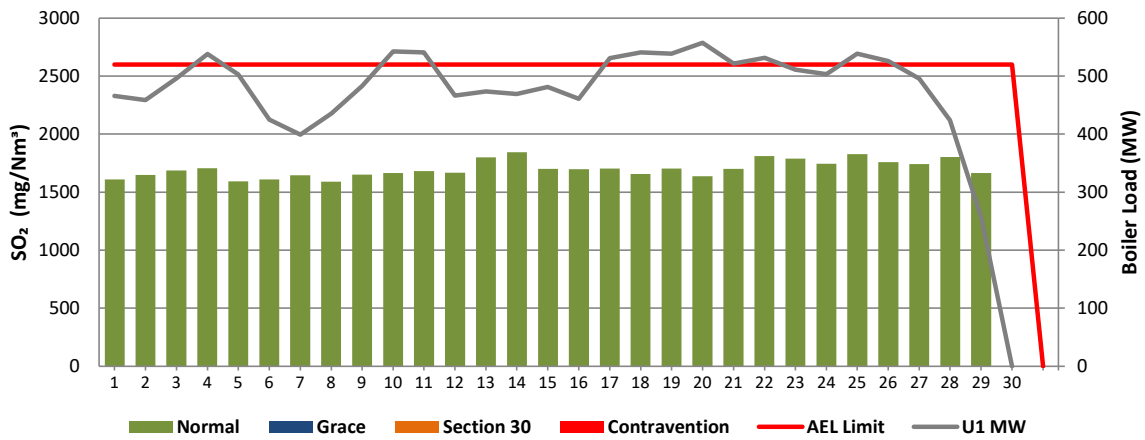


Figure 8: Lethabo Unit 2 SO₂ Emissions - September 2025

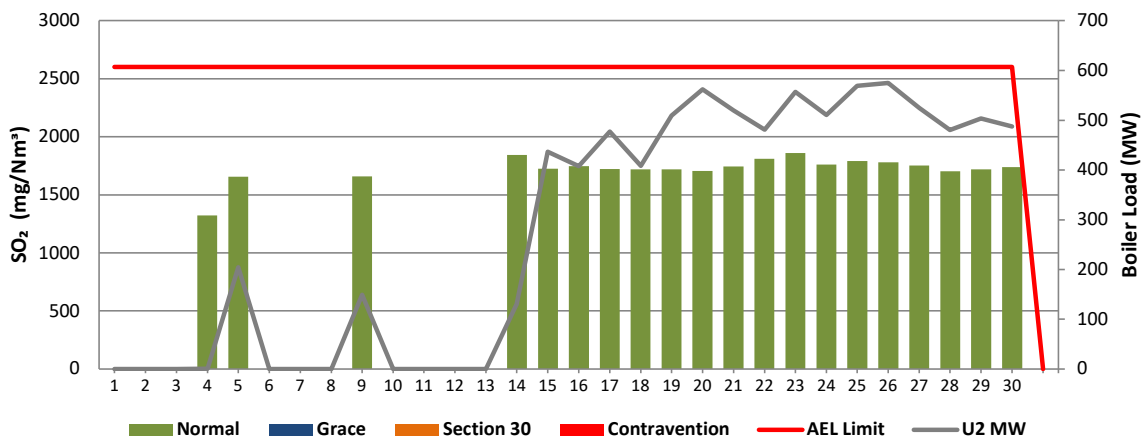


Figure 9: Lethabo Unit 3 SO₂ Emissions - September 2025

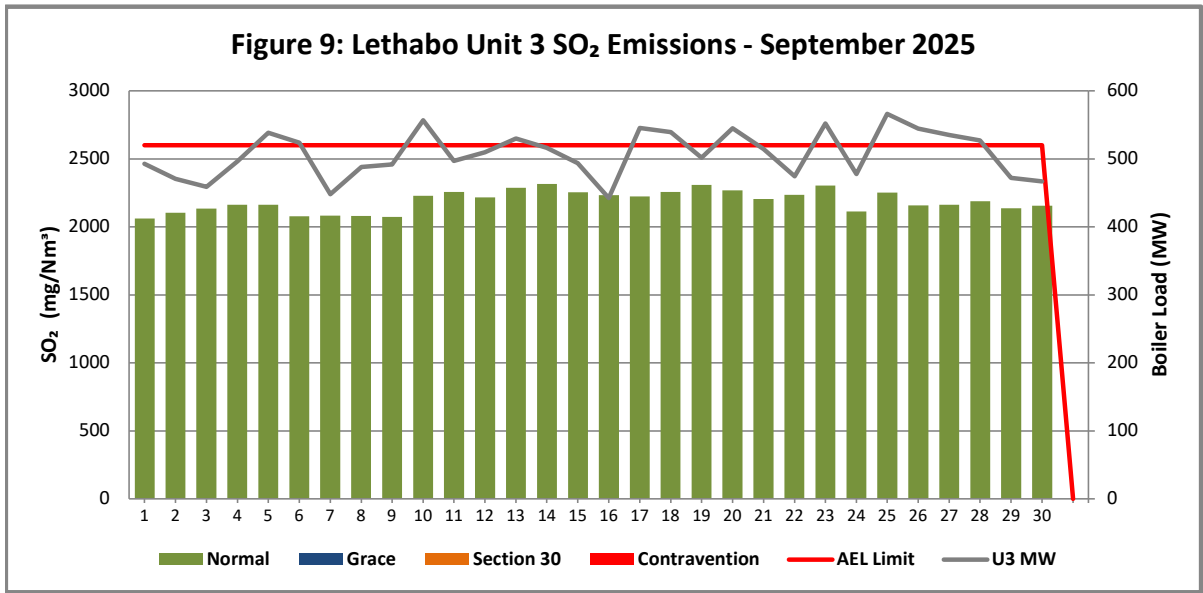


Figure 10: Lethabo Unit 4 SO₂ Emissions - September 2025

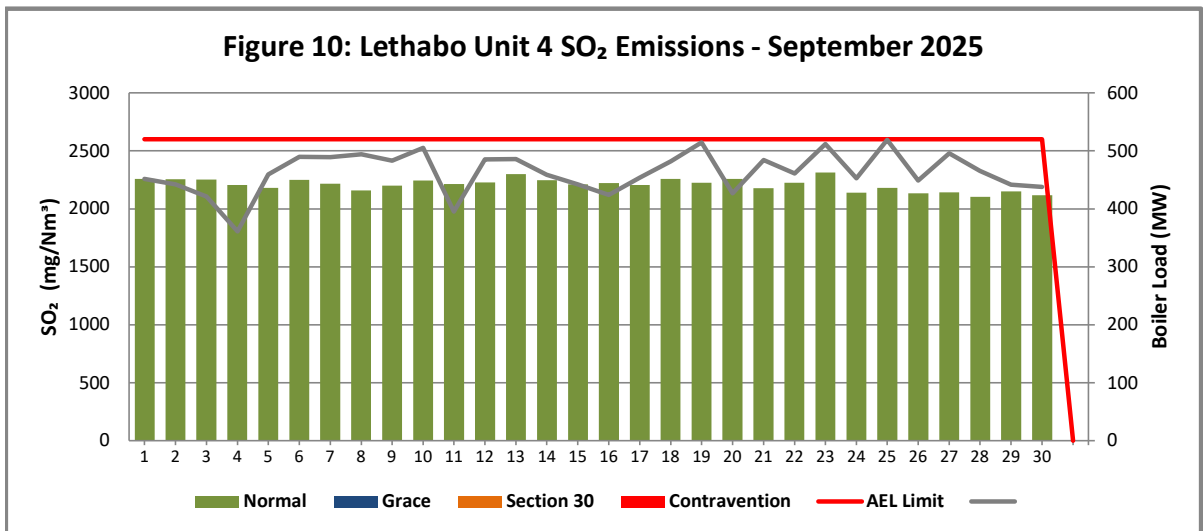


Figure 11: Lethabo Unit 5 SO₂ Emissions - September 2025

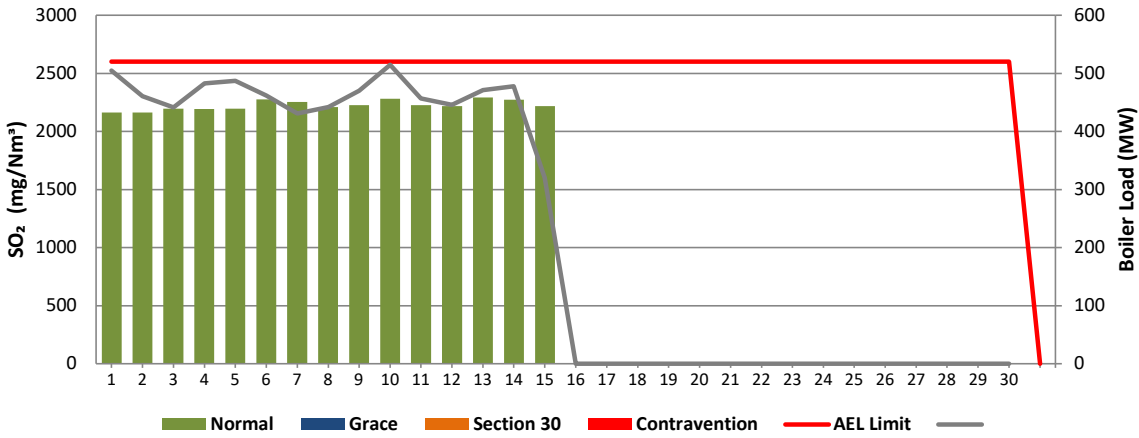


Figure 12: Lethabo Unit 6 SO₂ Emissions - September 2025

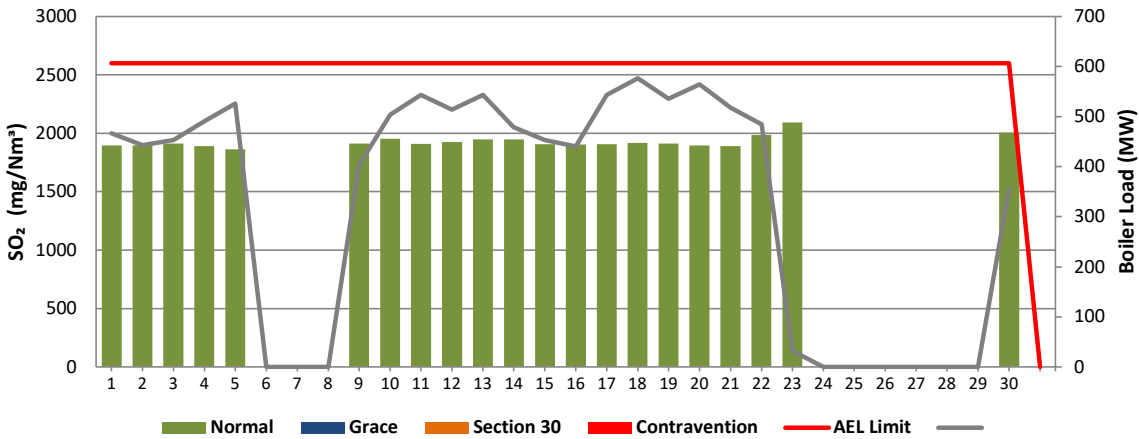


Figure 13: Lethabo Unit 1 NO_x Emissions - September 2025

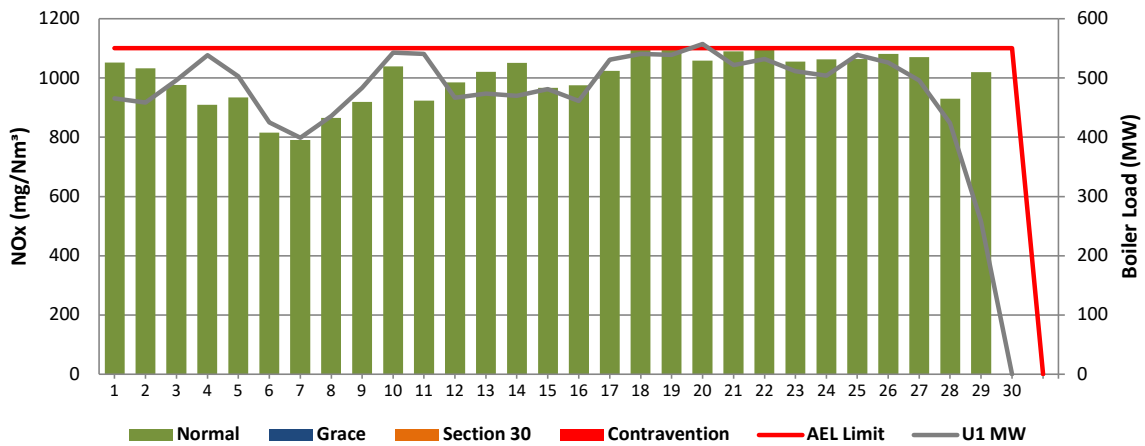


Figure 14: Lethabo Unit 2 NO_x Emissions - September 2025

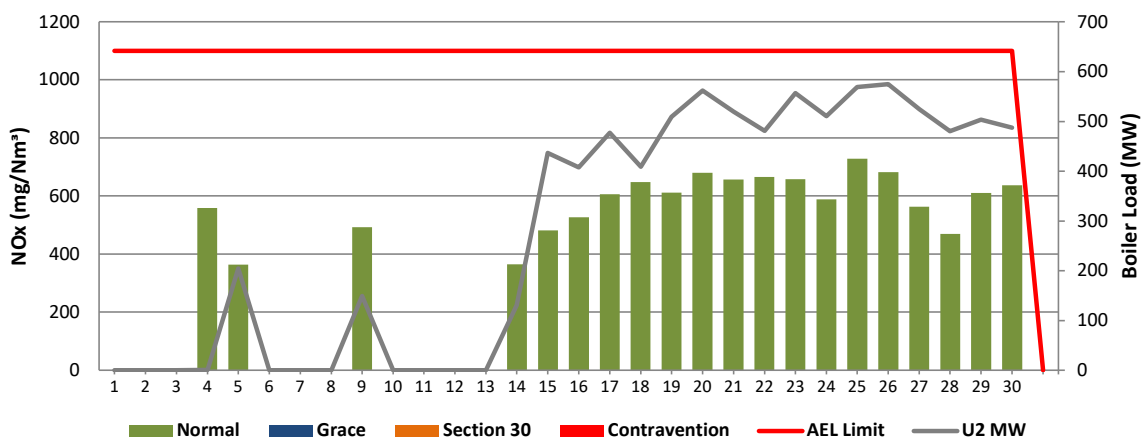


Figure 15: Lethabo Unit 3 NO_x Emissions - September 2025

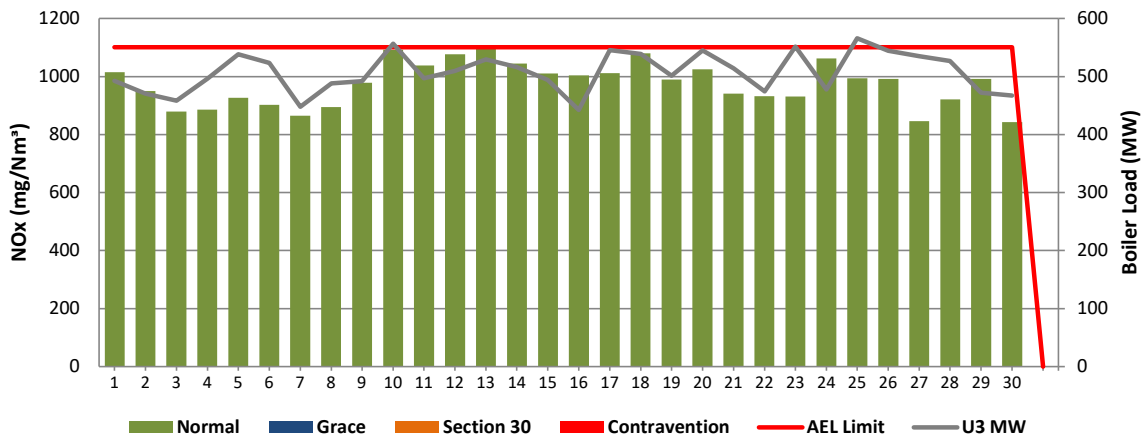


Figure 16: Lethabo Unit 4 NO_x Emissions - September 2025

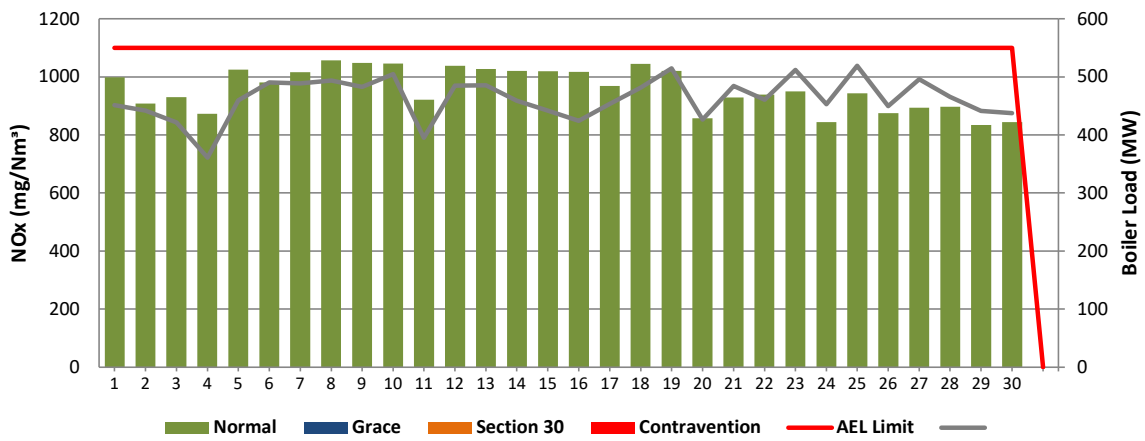


Figure 17: Lethabo Unit 5 NO_x Emissions - September 2025

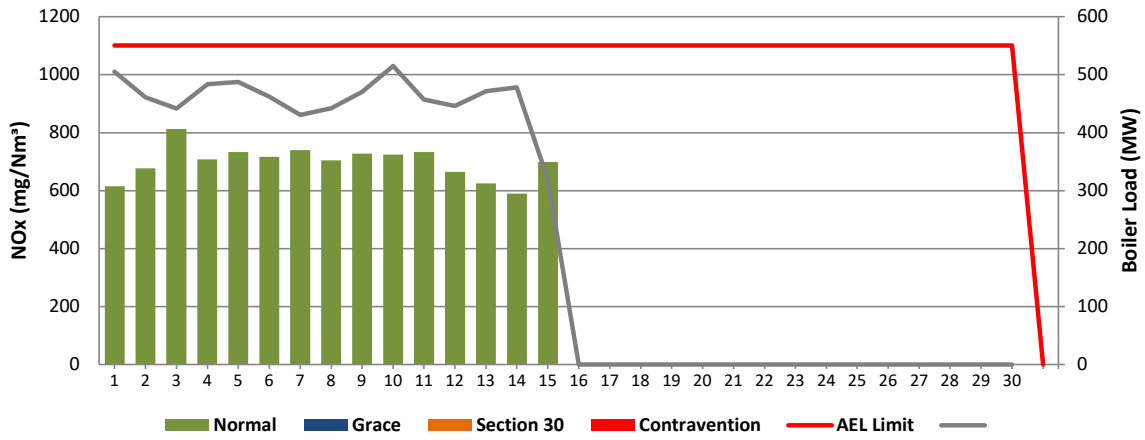
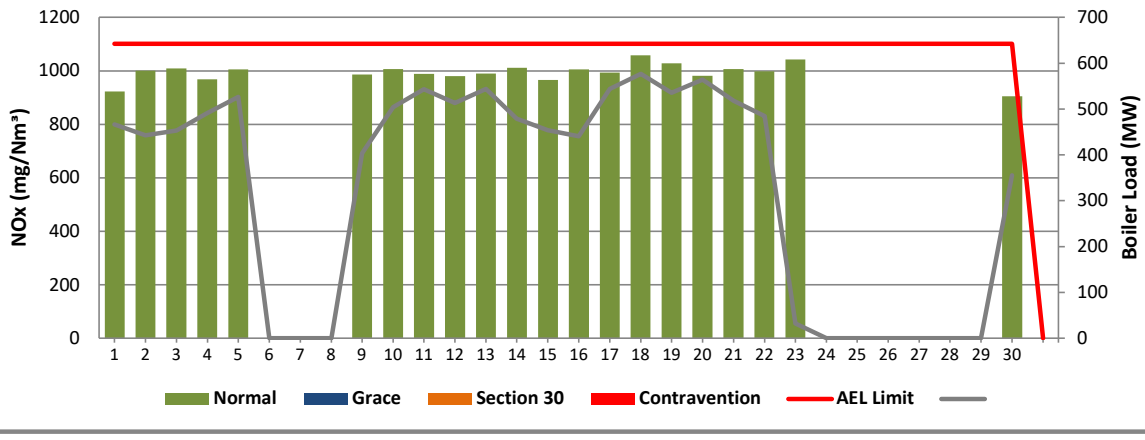


Figure 18: Lethabo Unit 6 NO_x Emissions - September 2025



7 SHUT-DOWN AND LIGHT-UP INFORMATION FOR SEPTEMBER 2025

See Events sheet

8. MAINTENANCE

Unit 1				
Beginning of	2025/09/08 00:04:00	2025/09/12 00:00:00		
Reason for Maintenance	LHO casing repairs.	LHI casing repairs.		
End (Time):	2025/09/09 12:39:00	2025/09/14 23:55:00		
Duration	12:35:00	71:55:00		

Unit 2				
Beginning of				
Reason for Maintenance				
End (Time):				
Duration				

Unit 3				
Beginning of				
Reason for Maintenance				
End (Time):				
Duration				

Unit 4				
Beginning of				
Reason for Maintenance				
End (Time):				
Duration				

Unit 5				
Beginning of				
Reason for Maintenance				
End (Time):				
Duration				

Unit 6				
Beginning of	2025/09/17 00:00:00	2025/09/17 14:12:00		
Reason for Maintenance	RHO casing repairs	RHO casing repairs		
End (Time):	2025/09/17 14:12:00	2025/09/17 23:52:00		
Duration	14:12:00	9:40:00		

9 COMPLAINTS

There were no complaints for this months

Source Code / Name	Root Cause Analysis	Calculation of Impacts / emissions associated with the incident	Dispersion modeling of pollutants where applicable	Measures implemented to prevent reoccurrence

10 GENERAL

Unit 5: Monitor Reliability
05-06/09/2025: PM monitor Reliability low due to monitor max out.

Unit 1, 2, 3, 4 & 6: Gaseous Monitor Reliability
16 - 17/09/2025: Gaseous monitor reliability low due to server issues.

Unit 1 Gaseous Monitor Reliability
19/09/2025: Gaseous monitor reliability low due to server issues.

Unit 1 Gaseous Monitor Reliability
10 ,12 - 13/09/2025: Gaseous monitor reliability low due to server issues

CO2 and Velocity Monitors Low Reliability Units 1-6:
Due to correction of bad data as per internal emission data integrity review actions in 2021 and 2022. Bad Velocity data and Bad CO2 data were corrected/removed as per the review actions and findings

7 Shut-down and light-up information for SEPTEMBER 2025

Event Description	Event 1	Event 2	Event 3	Event 4	Event 5	Event 6	Event 7	Event 8			
Unit 1	Breaker Open (BO)	3:30 pm	2025/09/29								
	Draught Group (DG) Shut Down (SD)	9:50 pm	2025/09/29								
	BO to DG SD (duration)	00:06:20	DD:HH:MM	DD:HH:MM	DD:HH:MM	DD:HH:MM	DD:HH:MM	DD:HH:MM			
	Fires in time										
	Synch. to Grid (or BC)										
	Fires in to BC (duration)	DD:HH:MM	DD:HH:MM	DD:HH:MM	DD:HH:MM	DD:HH:MM	DD:HH:MM	DD:HH:MM			
	Emissions below limit from BC (end date)										
	Emissions below limit from BC (duration)	DD:HH:MM	DD:HH:MM	DD:HH:MM	DD:HH:MM	DD:HH:MM	DD:HH:MM	DD:HH:MM			
Unit 2	Breaker Open (BO)	7:25 pm	2025/09/18	BO previously	BO previously	BO previously	BO previously	BO previously			
	Draught Group (DG) Shut Down (SD)	12:40 pm	2025/09/01	n/a	n/a	n/a	n/a	n/a			
	BO to DG SD (duration)	#####	DD:HH:MM	n/a	DD:HH:MM	n/a	DD:HH:MM	n/a	DD:HH:MM		
	Fires in time	8:50 am	2025/09/04	4:30 am	2025/09/05	7:15 am	2025/09/09	9:00 am	2025/09/14	9:55 pm	2025/09/18
	Synch. to Grid (or BC)	3:35 pm	2025/09/14	1:00 am	2025/09/19						
	Fires in to BC (duration)	10:06:45	DD:HH:MM	13:20:30	DD:HH:MM	DD:HH:MM	DD:HH:MM	DD:HH:MM	DD:HH:MM		
	Emissions below limit from BC (end date)	12:00 pm	2025/09/15	12:00 am	2025/09/21	not > limit	not > limit	not > limit	not > limit		
	Emissions below limit from BC (duration)	00:20:25	DD:HH:MM	01:23:00	DD:HH:MM	DD:HH:MM	DD:HH:MM	DD:HH:MM	DD:HH:MM		
Unit 3	Breaker Open (BO)										
	Draught Group (DG) Shut Down (SD)										
	BO to DG SD (duration)	DD:HH:MM	DD:HH:MM	DD:HH:MM	DD:HH:MM	DD:HH:MM	DD:HH:MM	DD:HH:MM			
	Fires in time										
	Synch. to Grid (or BC)										
	Fires in to BC (duration)	DD:HH:MM	DD:HH:MM	DD:HH:MM	DD:HH:MM	DD:HH:MM	DD:HH:MM	DD:HH:MM			
	Emissions below limit from BC (end date)										
	Emissions below limit from BC (duration)	DD:HH:MM	DD:HH:MM	DD:HH:MM	DD:HH:MM	DD:HH:MM	DD:HH:MM	DD:HH:MM			
Unit 4	Breaker Open (BO)										
	Draught Group (DG) Shut Down (SD)										
	BO to DG SD (duration)	DD:HH:MM	DD:HH:MM	DD:HH:MM	DD:HH:MM	DD:HH:MM	DD:HH:MM	DD:HH:MM			
	Fires in time										
	Synch. to Grid (or BC)										
	Fires in to BC (duration)	DD:HH:MM	DD:HH:MM	DD:HH:MM	DD:HH:MM	DD:HH:MM	DD:HH:MM	DD:HH:MM			
	Emissions below limit from BC (end date)										
	Emissions below limit from BC (duration)	DD:HH:MM	DD:HH:MM	DD:HH:MM	DD:HH:MM	DD:HH:MM	DD:HH:MM	DD:HH:MM			
Unit 5	Breaker Open (BO)										
	Draught Group (DG) Shut Down (SD)										
	BO to DG SD (duration)	DD:HH:MM	DD:HH:MM	DD:HH:MM	DD:HH:MM	DD:HH:MM	DD:HH:MM	DD:HH:MM			
	Fires in time										
	Synch. to Grid (or BC)										
	Fires in to BC (duration)	DD:HH:MM	DD:HH:MM	DD:HH:MM	DD:HH:MM	DD:HH:MM	DD:HH:MM	DD:HH:MM			
	Emissions below limit from BC (end date)										
	Emissions below limit from BC (duration)	DD:HH:MM	DD:HH:MM	DD:HH:MM	DD:HH:MM	DD:HH:MM	DD:HH:MM	DD:HH:MM			
Unit 6	Breaker Open (BO)	11:45 pm	2025/09/05	1:15 am	2025/09/23						
	Draught Group (DG) Shut Down (SD)	6:10 pm	2025/09/07	5:25 am	2025/09/23						
	BO to DG SD (duration)	01:18:25	DD:HH:MM	00:04:10	DD:HH:MM	DD:HH:MM	DD:HH:MM	DD:HH:MM			
	Fires in time	8:45 pm	2025/09/08	11:55 pm	2025/09/29						
	Synch. to Grid (or BC)	2:55 am	2025/09/09	4:25 am	2025/09/30						
	Fires in to BC (duration)	00:08:10	DD:HH:MM	00:04:30	DD:HH:MM	DD:HH:MM	DD:HH:MM	DD:HH:MM			
	Emissions below limit from BC (end date)	12:00 am	2025/09/12	12:00 am	2025/10/01						
	Emissions below limit from BC (duration)	02:21:05	DD:HH:MM	00:19:35	DD:HH:MM	DD:HH:MM	DD:HH:MM	DD:HH:MM			

ADDENDUM TO MONTHLY EMISSIONS REPORT

Final SO _x Concentration (mg/Nm ³)							
Date	U1	U2	U3	U4	U5	U6	Limit
01-Sept	1609		2061	2257	2163	1895	2600
02-Sept	1648		2104	2254	2163	1895	2600
03-Sept	1688		2133	2252	2196	1913	2600
04-Sept	1708	1322	2163	2207	2192	1890	2600
05-Sept	1594	1657	2162	2182	2195	1863	2600
06-Sept	1611		2077	2251	2278		2600
07-Sept	1647		2082	2217	2254		2600
08-Sept	1590		2079	2158	2208		2600
09-Sept	1651	1660	2073	2200	2229	1914	2600
10-Sept	1665		2229	2245	2282	1952	2600
11-Sept	1682		2255	2214	2228	1907	2600
12-Sept	1667		2217	2227	2220	1927	2600
13-Sept	1802		2287	2298	2293	1947	2600
14-Sept	1846	1845	2315	2248	2273	1947	2600
15-Sept	1702	1724	2253	2211	2218	1905	2600
16-Sept	1697	1745	2233	2222		1904	2600
17-Sept	1703	1724	2224	2206		1906	2600
18-Sept	1658	1720	2255	2258		1917	2600
19-Sept	1706	1719	2308	2224		1913	2600
20-Sept	1636	1707	2267	2258		1895	2600
21-Sept	1700	1744	2205	2177		1891	2600
22-Sept	1810	1809	2235	2225		1984	2600
23-Sept	1791	1858	2303	2314		2092	2600
24-Sept	1744	1761	2113	2140			2600
25-Sept	1831	1790	2252	2182			2600
26-Sept	1760	1779	2157	2135			2600
27-Sept	1743	1754	2162	2143			2600
28-Sept	1803	1702	2186	2105			2600
29-Sept	1666	1718	2135	2151			2600
30-Sept		1740	2155	2118		2006	2600
00-Jan	0	0	0	0	0	0	2600

ADDENDUM TO MONTHLY EMISSIONS REPORT

Final NO _x Concentration (mg/Nm ³)							
Date	U1	U2	U3	U4	U5	U6	Limit
01-Sept	1052		1015	998	615	922	1100
02-Sept	1033		950	909	677	1001	1100
03-Sept	976		880	930	813	1009	1100
04-Sept	909	559	886	873	708	968	1100
05-Sept	934	364	927	1026	733	1005	1100
06-Sept	816		902	981	717		1100
07-Sept	791		865	1016	739		1100
08-Sept	866		895	1058	705		1100
09-Sept	919	493	979	1048	728	986	1100
10-Sept	1039		1092	1046	724	1006	1100
11-Sept	924		1038	922	733	989	1100
12-Sept	985		1076	1038	664	980	1100
13-Sept	1020		1097	1028	625	990	1100
14-Sept	1051	365	1045	1021	589	1011	1100
15-Sept	967	481	1010	1020	699	966	1100
16-Sept	976	527	1005	1017		1005	1100
17-Sept	1025	606	1012	968		992	1100
18-Sept	1094	648	1080	1046		1058	1100
19-Sept	1094	611	990	1020		1028	1100
20-Sept	1060	680	1025	858		981	1100
21-Sept	1090	657	941	929		1007	1100
22-Sept	1095	666	932	939		998	1100
23-Sept	1056	659	931	949		1043	1100
24-Sept	1063	589	1062	845			1100
25-Sept	1064	729	994	943			1100
26-Sept	1081	682	992	875			1100
27-Sept	1070	563	846	895			1100
28-Sept	930	469	921	897			1100
29-Sept	1020	610	992	834			1100
30-Sept		637	843	843		905	1100
00-Jan	0	0	0	0	0	0	1100

ADDENDUM TO MONTHLY EMISSIONS REPORT

13. AVAILABILITY

ESP utilisation

Availability												
Month	Unit 1	Days Affected	Unit 2	Days Affected	Unit 3	Days Affected	Unit 4	Days Affected	Unit 5	Days Affected	Unit 6	Days Affected
Sept-24	98.55%	1.7	99.84%	0.2	100.00%	0.0	99.12%	1.1	99.16%	1.0	100.00%	0.00%
Oct-24	99.19%	1.00	100.00%	0.00	100.00%	0.00	100.00%	0.00	97.67%	2.88	100.00%	0.00
Nov-24	0.00%	0.0	0.00%	0.0	0.00%	0.0	0.00%	0.0	0.00%	0.0	0.00%	0.00%
Dec-24	99.39%	0.8	99.24%	0.9	100.00%	0.0	99.18%	1.0	99.96%	0.0	99.27%	90.83%
Jan-25	98.99%	1.25	100.00%	0.00	100.00%	0.00	100.00%	0.00	98.40%	1.98	100.00%	0.00
Feb-25	99.18%	0.9	99.84%	0.2	100.00%	0.0	100.00%	0.0	100.00%	0.0	98.90%	123.54%
Mar-25	98.08%	2.38	99.27%	0.91	98.99%	1.25	100.00%	0.00	95.52%	5.55	100.00%	0.00
Apr-25	98.21%	2.15	100.00%	0.00	100.00%	0.00	100.00%	0.00	97.50%	3.00	98.48%	1.82
May-25	99.33%	0.8	100.00%	0.0	97.26%	3.4	100.00%	0.0	100.00%	0.0	100.00%	0.0
Jun-25	98.12%	2.3	100.00%	0.0	100.00%	0.0	100.00%	0.0	99.16%	1.0	100.00%	0.0
Jul-25	97.94%	2.6	100.00%	0.0	100.00%	0.0	98.82%	1.5	98.41%	2.0	100.00%	0.0
Aug-25	97.72%	2.8	100.00%	0.0	99.62%	0.5	99.33%	0.8	98.18%	2.3	100.00%	0.0
Sept-25	96.23%	4.5	100.00%	0.0	100.00%	0.0	100.00%	0.0	100.00%	0.0	99.17%	1.0

SO3 plant utilisation

Availability												
Month	Unit 1	Days Affected	Unit 2	Days Affected	Unit 3	Days Affected	Unit 4	Days Affected	Unit 5	Days Affected	Unit 6	Days Affected
Sept-24	100.00%	0.0	89.45%	3.2	99.33%	0.2	99.84%	0.0	99.58%	0.1	99.92%	2.45%
Oct-24	99.85%	0.05	95.65%	1.35	Off-line	Off-line	98.92%	0.33	93.82%	1.92	99.59%	12.62%
Nov-24	99.99%	0.0	96.60%	1.0	Off-line	Off-line	99.17%	0.3	97.46%	0.8	99.21%	0.24
Dec-24	52.80%	14.6	27.08%	22.6	Off-line	Off-line	77.33%	7.0	66.67%	10.3	60.94%	12.11
Jan-25	95.59%	1.4	93.50%	2.0	Off-line	Off-line	96.18%	1.2	90.28%	3.0	94.33%	1.76
Feb-25	91.37%	2.4	95.28%	1.3	67.36%	9.14	95.45%	1.3	91.35%	2.4	97.77%	0.62
Mar-25	98.52%	0.5	96.36%	1.1	85.05%	4.63	98.61%	0.4	99.91%	0.0	88.42%	3.59
Apr-25	95.63%	1.3	Off	Off	89.52%	3.15	85.62%	4.3	88.61%	3.4	99.78%	0.07
May-25	95.99%	1.2	Off	Off	98.12%	0.58	99.01%	0.3	99.52%	0.1	98.36%	0.5
Jun-25	99.86%	0.0	Off	Off	99.25%	0.22	99.83%	0.1	98.19%	0.5	99.22%	0.2
Jul-25	99.87%	0.0	Off	Off	99.06%	0.29	100.00%	0.0	98.79%	0.4	66.67%	10.3
Aug-25	99.73%	0.1	Off	Off	96.41%	1.11	98.87%	0.4	99.87%	0.0	98.06%	0.6
Sept-25	99.17%	0.2	94.99%	1.5	99.31%	0.21	95.14%	1.5	86.85%	3.9	98.73%	0.4

ADDENDUM TO MONTHLY EMISSIONS REPORT

Particulate Emission Monitors

Availability						
	Unit 1	Unit 2	Unit 3	Unit 4	Unit 5	Unit 6
Sept-24	98.11%	94.42%	100.00%	98.42%	96.20%	99.64%
Oct-24	100%	94%	Off	99%	97%	98.18%
Nov-24	99.43%	99.40%	Off	99.31%	94.41%	98.54%
Dec-24	100.00%	96.61%	Off	98.22%	96.26%	99.60%
Jan-25	96.64%	98.67%	Off	87.85%	92.93%	99.02%
Feb-25	98.72%	97.70%	85.64%	99.62%	93.53%	98.72%
Mar-25	93.15%	96.04%	96.08%	99.85%	92.61%	97.36%
Apr-25	98.70%	Off	99.50%	90.90%	96.10%	99.10%
May-25	100.00%	Off	98.70%	100.00%	98.90%	100.00%
Jun-25	98.50%	Off	98.10%	99.80%	99.80%	99.20%
Jul-25	100.00%	Off	100.00%	100.00%	98.40%	66.70%
Aug-25	99.90%	Exempt	96.30%	99.80%	99.50%	99.20%
Sept-25	100.00%	99.70%	100.00%	99.90%	92.70%	99.60%

Gaseous Emission Monitors

Availability												
Month	Unit 1		Unit 2		Unit 3		Unit 4		Unit 5		Unit 6	
	SOx	NOx	SOx	NOx	SOx	NOx	SOx	NOx	SOx	NOx	SOx	NOx
Sept-24	100.0%	100.0%	100.0%	99.7%	100.0%	100.0%	100.0%	100.0%	100.0%	100.0%	100.0%	100.0%
Oct-24	99.8%	100.0%	99.6%	99.7%	0.0%	0.0%	100.0%	100.0%	100.0%	100.0%	99.7%	99.7%
Nov-24	100.0%	100.0%	100.0%	100.0%	0.0%	0.0%	100.0%	100.0%	100.0%	100.0%	99.9%	100.0%
Dec-24	57.5%	57.5%	37.5%	37.5%	0.0%	0.0%	79.7%	79.7%	66.7%	66.7%	65.6%	65.7%
Jan-25	99.3%	99.1%	99.3%	99.3%	0.0%	0.0%	100.0%	96.4%	100.0%	100.0%	100.0%	100.0%
Feb-25	98.2%	100.0%	100.0%	99.6%	86.1%	85.2%	96.0%	96.0%	94.6%	94.6%	96.2%	96.2%
Mar-25	93.8%	99.9%	100.0%	100.0%	100.0%	100.0%	100.0%	100.0%	100.0%	100.0%	100.0%	100.0%
Apr-25	98.6%	98.6%	Off	Off	98.6%	98.6%	92.6%	91.9%	96.1%	99.2%	99.2%	99.2%
May-25	97.7%	97.7%	Off	Off	98.1%	98.1%	97.5%	97.5%	97.8%	97.8%	98.1%	98.1%
Jun-25	99.9%	99.9%	Off	Off	96.0%	96.0%	99.8%	99.8%	99.7%	99.6%	99.6%	99.8%
Jul-25	99.7%	99.7%	Off	Off	99.7%	99.7%	99.9%	99.9%	99.9%	99.9%	100.0%	100.0%
Aug-25	100.0%	80.9%	100.0%	98.0%	93.6%	85.4%	99.8%	84.9%	99.5%	86.2%	99.2%	93.6%
Sept-25	92.9%	94.0%	92.9%	90.4%	94.3%	91.8%	94.3%	94.1%	98.1%	98.1%	92.5%	92.5%

Oxygen Monitor Availability						
	Unit 1	Unit 2	Unit 3	Unit 4	Unit 5	Unit 6
Sept-24	100.00%	99.90%	100.00%	99.86%	99.72%	99.70%
Oct-24	99.23%	99.55%	0.00%	99.87%	94.89%	99.28%
Nov-24	100.00%	100.00%	0.00%	99.86%	84.89%	99.15%
Dec-24	57.50%	37.50%	0.00%	79.71%	66.67%	65.73%
Jan-25	99.55%	99.50%	0.00%	98.40%	99.43%	82.47%
Feb-25	99.70%	99.24%	85.19%	95.83%	94.39%	60.94%
Mar-25	100.00%	100.00%	100.00%	100.00%	99.81%	99.87%
Apr-25	98.82%	Off	98.48%	98.07%	99.07%	99.88%
May-25	97.74%	Off	99.44%	99.82%	99.78%	99.87%
Jun-25	99.83%	Off	99.84%	99.84%	99.74%	99.93%
Jul-25	99.85%	Off	99.82%	99.80%	99.46%	99.96%
Aug-25	99.83%	Off	99.84%	99.82%	99.68%	99.62%
Sept-25	93.90%	92.90%	93.10%	94.20%	98.10%	92.50%

ADDENDUM TO MONTHLY EMISSIONS REPORT

14. EFFICIENCY

	ESP Efficiency (%)					
	Unit 1	Unit 2	Unit 3	Unit 4	Unit 5	Unit 6
Sept-24	100.000%	99.899%	100.000%	99.856%	99.722%	99.702%
Oct-24	99.23%	99.55%	0.00%	99.87%	94.89%	99.280%
Nov-24	100.000%	100.000%	0.000%	99.861%	84.886%	99.147%
Dec-24	57.500%	37.500%	0.000%	79.710%	66.667%	65.726%
Jan-25	99.554%	99.500%	0.000%	98.397%	99.432%	82.471%
Feb-25	99.702%	99.242%	85.188%	95.833%	94.391%	60.938%
Mar-25	100.000%	100.000%	100.000%	100.000%	99.812%	99.866%
Apr-25	98.818%	OFF	98.484%	98.074%	99.067%	99.877%
May-25	97.740%	OFF	99.440%	99.820%	99.780%	99.870%
Jun-25	99.830%	OFF	99.840%	99.840%	99.740%	99.930%
Jul-25	99.850%	OFF	99.820%	99.800%	99.460%	99.960%
Aug-25	99.830%	OFF	99.840%	99.820%	99.680%	99.620%
Sept-25	99.810%	99.900%	99.860%	99.750%	98.870%	99.860%

15. REMARKS

UNIT	MWLOSS	REASON	ACTUALSTARTDATE	ACTUALENDDATE
1	90	High stack emissions	2025/09/05 17:24:00	2025/09/06 07:07:00
1	190	High stack emissions	2025/09/06 07:07:00	2025/09/06 12:30:00
1	209	High stack emissions	2025/09/06 12:30:00	2025/09/06 13:03:00
1	190	High stack emissions	2025/09/06 13:03:00	2025/09/06 22:00:00
1	190	High stack emissions	2025/09/07 14:44:00	2025/09/08 00:04:00
1	90	LHO casing	2025/09/08 00:04:00	2025/09/09 12:39:00
1	90	LHI Precips Casing rapper bars repairs (Casing not performing).	2025/09/12 00:00:00	2025/09/14 23:55:00
1	190	High stack emissions.	2025/09/27 20:00:00	2025/09/27 20:15:00
1	593	CW leaks repairs	2025/09/29 15:25:00	2025/09/30 23:59:59
2	593	Boiler tube leak repairs	2025/09/01 00:00:00	2025/09/04 23:49:00
2	329	RH FD Fan defective	2025/09/05 02:49:00	2025/09/05 03:47:00
2	593	LH PA Fan tripped on bearing temp high	2025/09/05 03:47:00	2025/09/05 06:34:00
2	374	ESO and SO3 plant optimization	2025/09/05 08:04:00	2025/09/05 22:28:00
2	593	Boiler tube leak repairs	2025/09/05 22:28:00	2025/09/08 08:50:00
2	232	EFPA tripped	2025/09/09 15:31:00	2025/09/09 15:35:00
2	218	EFPA tripped	2025/09/09 15:35:00	2025/09/09 16:41:00
2	335	EFPA tripped	2025/09/09 16:41:00	2025/09/09 18:26:00
2	593	Boiler Tube leak.	2025/09/09 22:12:00	2025/09/13 14:52:00
2	291	A,C&F mills not available.	2025/09/14 18:30:00	2025/09/14 22:01:00
2	593	EFPA tripped	2025/09/18 19:19:00	2025/09/19 00:59:00
2	343	EFPA tripped	2025/09/21 07:16:00	2025/09/21 09:02:00
4	268	A EFPA faulty.	2025/09/04 13:04:00	2025/09/05 03:43:00
4	259	Left Hand draught group tripped.	2025/09/10 10:50:00	2025/09/10 11:16:00
4	169	LH draught group tripped recovery.	2025/09/10 11:16:00	2025/09/10 12:03:00
4	246	A EFPA main pump leaking.	2025/09/11 04:50:00	2025/09/11 16:26:00
4	40	RH Outer precip casing repairs	2025/09/17 00:00:00	2025/09/17 14:12:00
4	66	RH Outer precip casing repairs	2025/09/17 14:12:00	2025/09/17 23:52:00
4	140	High stack emissions	2025/09/20 00:08:00	2025/09/20 14:14:00
4	90	EF:High stack emissions	2025/09/20 14:14:00	2025/09/20 22:03:00
4	38	High stack emissions	2025/09/24 18:39:00	2025/09/25 03:01:00
4	140	High stack emissions.	2025/09/26 11:46:00	2025/09/26 19:00:00
4	140	High stack emissions.	2025/09/28 08:09:00	2025/09/28 09:57:00
5	187	For high stack emissions	2025/09/05 20:08:00	2025/09/06 03:20:00
5	177	For high stack emissions	2025/09/06 03:20:00	2025/09/06 11:18:00
5	90	High stack emissions.	2025/09/06 11:18:00	2025/09/06 16:55:00
5	81	High stack emissions	2025/09/08 17:15:00	2025/09/09 00:15:00
5	90	High stack emissions	2025/09/11 16:52:00	2025/09/11 18:04:00
5	189	High stack emissions	2025/09/11 18:04:00	2025/09/12 01:15:00
5	188	EF:High stack emissions	2025/09/12 19:24:00	2025/09/13 01:08:00
5	593	Outage	2025/09/20 14:00:00	2025/09/30 23:59:59
6	593	Main Turbine over speed trip test.	2025/09/05 23:42:00	2025/09/06 05:01:00
6	593	Main Turbine faulty speed prob	2025/09/06 05:01:00	2025/09/08 06:40:00
6	297	System Generated Ramp Event for Event id : 2100616 First Outage	2025/09/05 02:52:00	2025/09/09 04:22:00
6	297	System Generated Ramp Event for Event id : 2100666	2025/09/09 04:22:00	2025/09/09 05:52:00
6	593	Unit tripped on turbine chanel one protection operation due to one mill operati	2025/09/23 01:14:00	2025/09/23 06:00:00
6	593	Turbine speed probe replacement	2025/09/23 06:00:00	2025/09/29 04:00:00