

Ms. MLT Mogakabe
Air Quality Officer
Gert Sibande District Municipality
PO Box 1748
ERMELO
2350

Date:
20 May 2026

Enquiries:
Mankhwela Ramaboea
Tel +27 11 154 6376

Ref: *Tutuka Annual 2025/01*

Dear Ms. MLT Mogakabe

TUTUKA POWER STATION'S ANNUAL EMISSIONS REPORT FOR APRIL 2025 TO MARCH 2026

This serves as Annual report required in terms of Section 7.6 in Tutuka Power Station's Atmospheric Emission License (Ref No: Lekwa/Eskom H SOC Ltd TPS/0013/2025/F04), as well as in terms of the reporting requirements listed in the Minimum Emission Standards (section 17 and 18). The emissions are for Eskom Tutuka Power Station from April 2025 to March 2026. Verified emissions of particulate matter PM, SO₂ and NO₂ as calculated, are also included.

Name, description, and reference number of the plant as specified in the AEL: (Ref No: Lekwa/Eskom H SOC Ltd TPS/0013/2025/F04).

Name of facility	Eskom Holdings SOC limited- Tutuka Power Station
Description of facility	Power Generation, Electricity generation, Portion of Pretorius Vlei No 374/2 Bethal Road, Standerton, Mpumalanga, 2430
Reference number of plant	2002/015527/30

1. Raw Materials

1.1 Fuel Oil Burnt

Tutuka Power Station uses fuel oil during Unit light up, the maximum allowable tons of heavy fuel oil to be used by Tutuka Power Station is 8 000 tons/month. The Station monitors the monthly usage and reports to Gert Sibande District Municipality, figure 1 indicates that the Station complies with the requirements of the AEL limit of 8 000 tons per month.

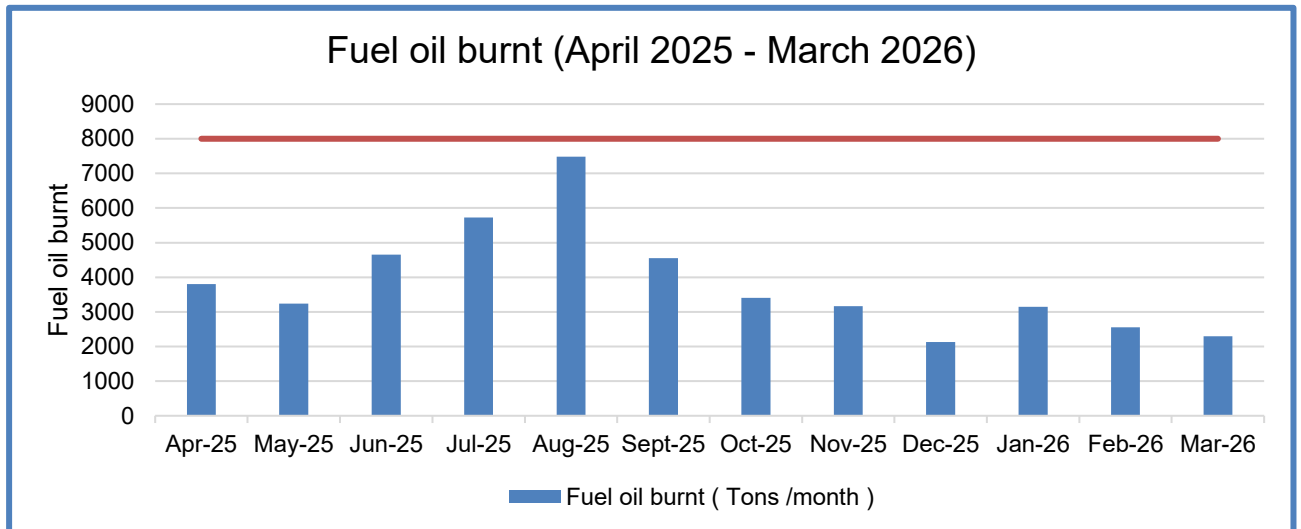


Figure 1: Monthly Fuel Oil Burnt in Tonnages from Tutuka Power Station April 2025 – March 2026.

1.2 Coal Burnt

Tutuka Power Station AEL prescribes the limits for raw materials consumption for coal. Tutuka Power Station coal consumption rate was well within the limit 1 380 000 tons/month as prescribed by the AEL for the reporting period of April 2025 – March 2026.

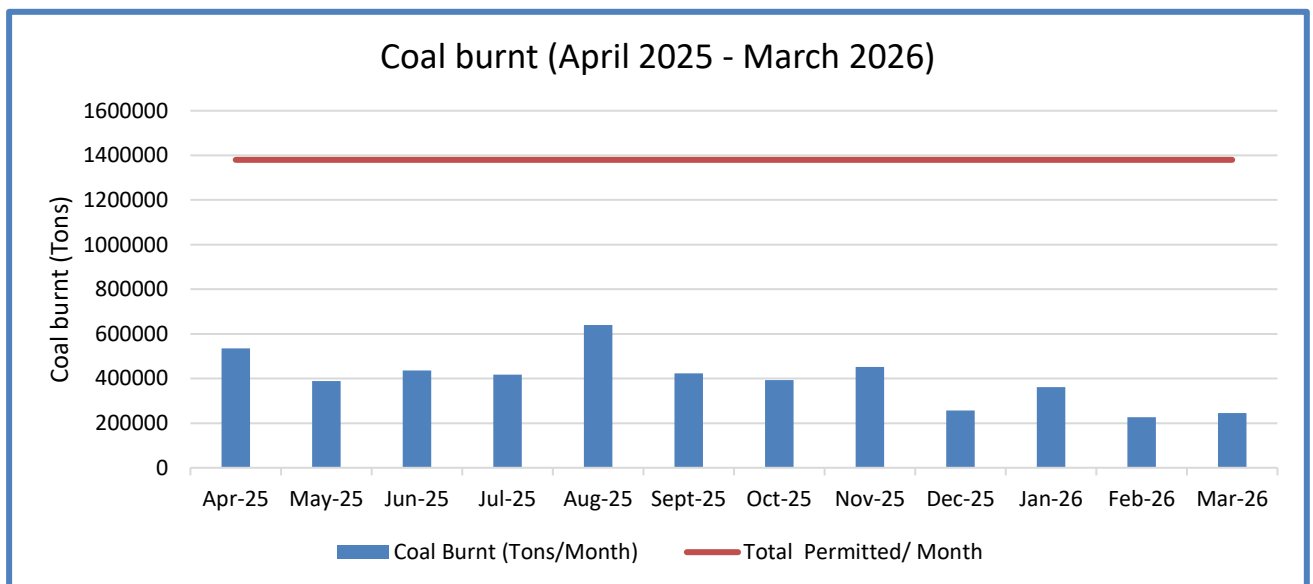


Figure 2: Monthly Coal Burnt in Tonnages from Tutuka Power Station April 2025 – March 2026.

2. Production rates

The maximum licensed production capacity is limited to 2 719GWh. The power station remained within prescribed limit for the period between April 2025 – March 2026. The station takes load losses to reduce Particulate Emissions when there is a need.

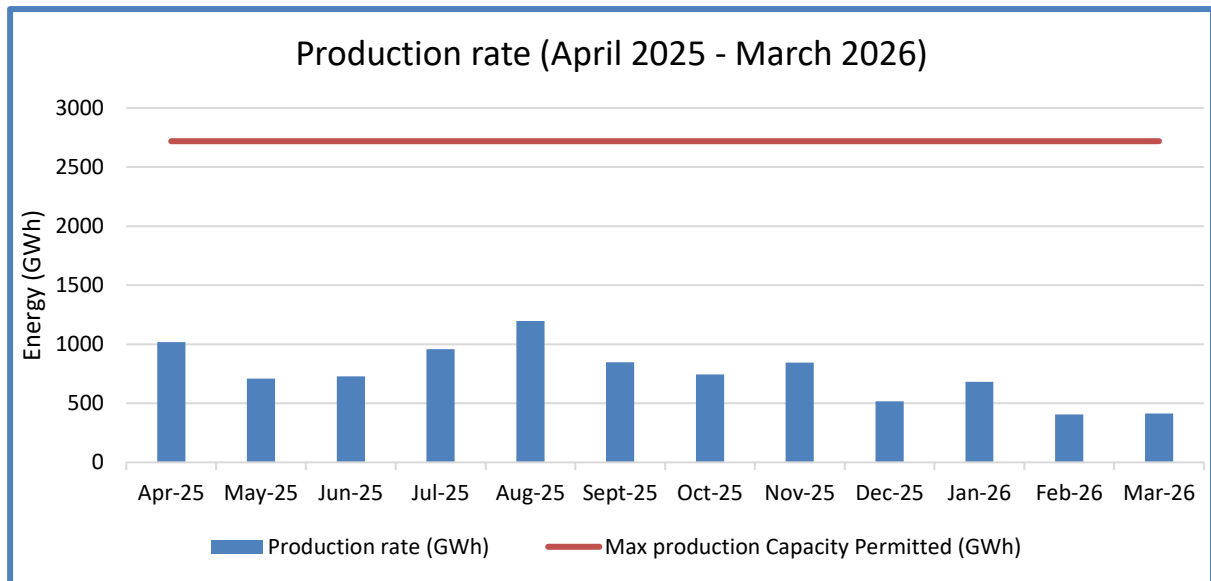


Figure 3: Monthly Energy sent out in GWh from Tutuka Power Station April 2025 – Mar 2026

3. Pollution Emission Trends

Continuous emission monitors are installed for all stacks/units.

3.1 The emissions tonnages in the table below are those of the Annual (April 2025 - March 2026).

Table 1. Total emissions at Tutuka Power Station – April 2025 - March 2026

Power Station	Coal-fired emissions (tonnages per annum)
Eskom Tutuka Power Station	PM: 9173.04 SO₂: 110 671.06 NO₂: 53 061.48

Table 2: Pollutant Emission Tonnages for April 2025 – March 2026

Month	PM (tons)	SO ₂ (tons)	NO ₂ (tons)
Apr-25	1405.84	13542.00	6488.00
May-25	1042.90	10838.00	4879.00
Jun-25	1127.24	11547.00	4979.00
Jul-25	587.23	10335.00	4825.00
Aug-25	1234.40	13475.00	6756.00
Sep-25	846.90	9399.00	4845.50
Oct-25	751.52	8343.00	4529.00
Nov-25	686.93	8760.06	4495.98
Dec-25	566.11	6687.00	2417.00
Jan-26	416.20	7740.00	3989.00
Feb-26	241.58	5032.00	2444.00
Mar-26	266.19	4973.00	2414.00
Sum	9173.04	110671.06	53061.48

3.2 Particulate Matter (PM) and gaseous (NOx and SOx) emission concentration trends for the reporting Annual (April 2024 – March 2025).

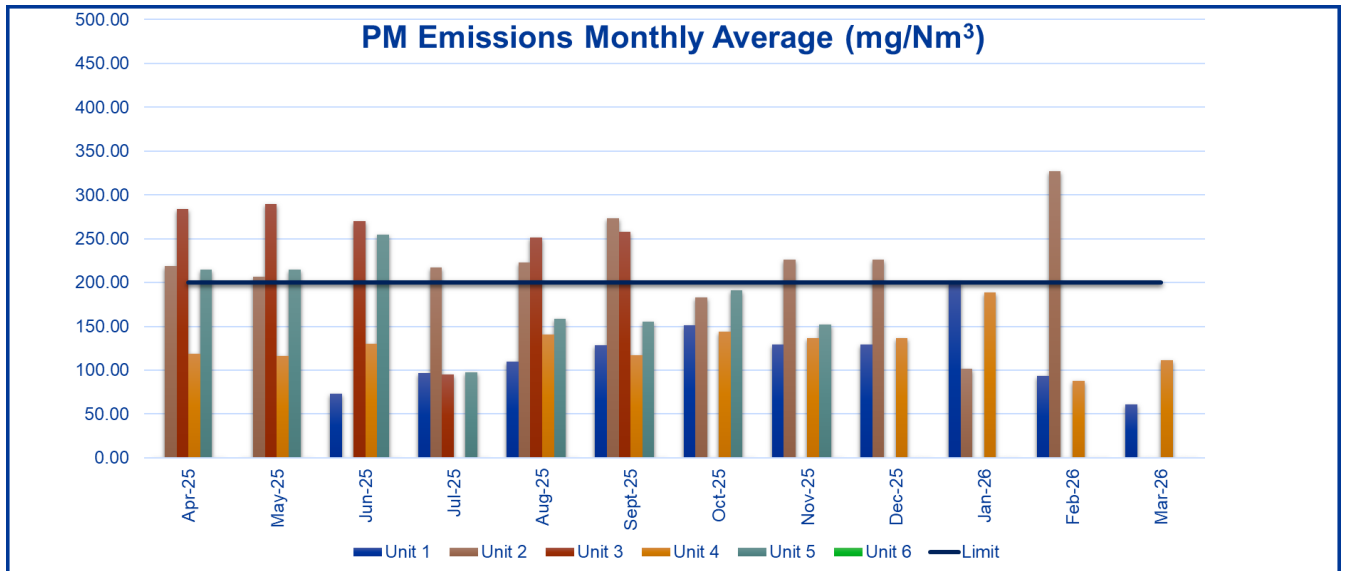


Figure 4: Unit 1 - 6 Monthly PM Averages - April 2025 – March 2026.

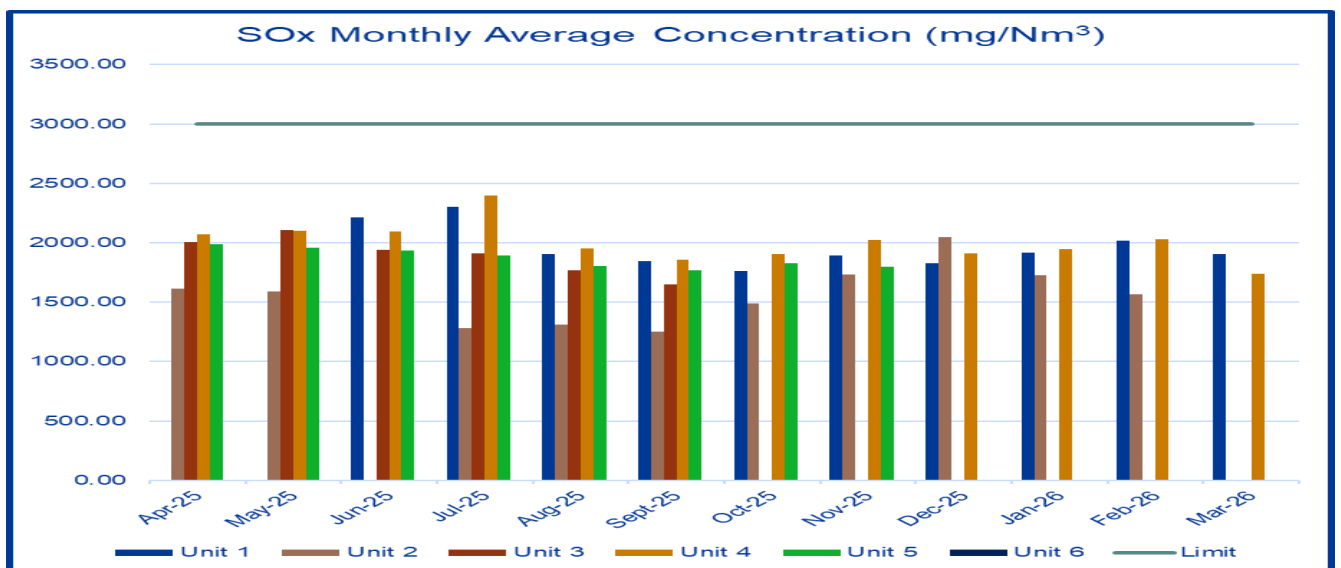


Figure 5: Unit 1 – 6 Monthly SOx Averages - April 2025 – March 2026.

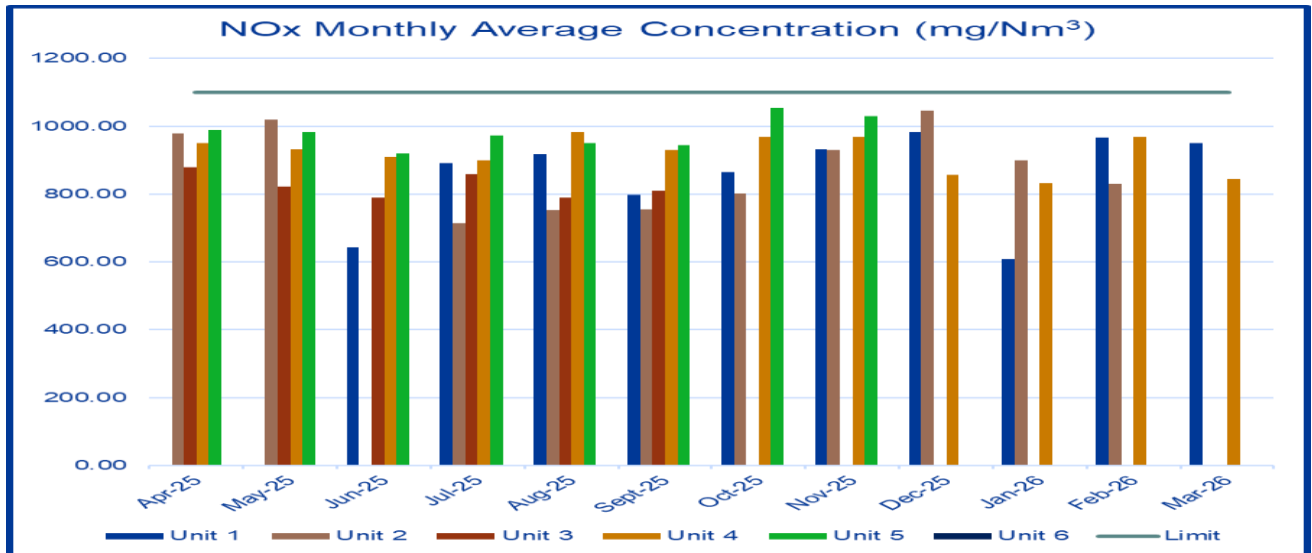


Figure 6: Unit 1 – 6 Monthly NOx Averages Emissions - April 2025 – March 2026.

4. An explanation of all instances where minimum emission standards were exceeded.

Tutuka Power Station utilizes Electrostatic Precipitators (ESP) to reduce particulate emissions from the stack. There were several exceedances of the particulate matter that were recorded throughout April 2025 - March 2026. The ESP plant experienced technical difficulties during this reporting period and exceeded the Particulate Matter limit on several occasions. For this reporting period the station incurred Legal Contraventions on Unit 2, 3 and 5, which varied in months for each Unit. From April – September 2025 Unit 3 exceeded the 200mg/Nm³ monthly average due to the stations Failure to implement timely permanent corrective actions for known ESP structural damage and ash handling deficiencies, resulting in progressive deterioration of ESP performance, however the Unit was taken on General Overhaul (GO) Outage on the 12th of September 2025 for the ESP refurbishment and installation of High Frequency Power Supply systems to address emission issues.

Unit 2 also incurred Legal Contravention due to exceedance of 200mg/Nm³ monthly average in April, May, July, August, September, November, December 2025 and January 2026, this was due to the poorly performing ESPs, Dust Handling Plant and delayed upgrades in the High Frequency Power Supplies project. Unit 2 will be going on GO Outage from June to October 2026, to address the emissions related defects. Unit 5 incurred Legal Contravention due to exceedance of 200mg/Nm³ monthly average for April, May and June 2025, where the attributing causes were high hoppers levels which led to internal faults to the ESPs (field 34 and 35) and HFPS. The Unit went on to replace the damaged HFPS which were damaged for both field 34 and 35 in November 2025.

For this reporting period of April 2025 – March 2026 **there were no exceedances for both NOx and SOx recorded.**

Figure 7 below illustrates the number of exceedances for the reporting period for both the Stacks, classified within either Grace, Section 30 and or Legal Contravention.

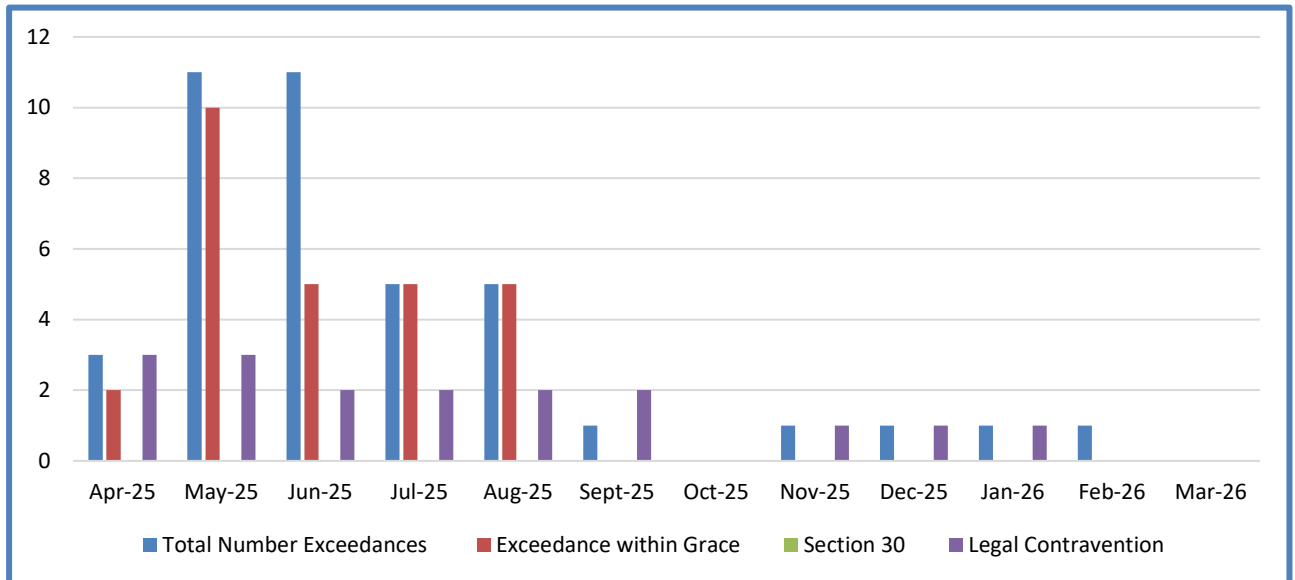


Figure 7: Monthly Total Number of PM Exceedances.

5. Correlation and Parallel Tests:

Tutuka Power Station made use of Sky-side South Africa service provider for the Correlation and Parallel Tests which were conducted at Unit 1, 2 and 4. Inthuu Measurements service provider was used for Unit 5 correlation test. The station has replaced all the PM monitors and Gaseous Analyzers as the old monitors had exhausted their lifespan from October 2025. Unit 3 went on outage in September 2025 with the plan to return to service on the 29th of May 2026 and 5 went on outage in November 2025 and returned to service in April 2026. Unit 6 remains in Outage, with projected RTS date of July 2026. The station is currently rolling out the Correlation and Parallel Tests for Unit 3 and 5 as they recently returned to service with newly installed monitors. Unit 6 will follow through once it is returned to service. (Parallel and Correlation test reports attached):

Table 3. Overview of Correlation and Parallel Tests Validity

Associated Unit/Stack	Correlation Test (PM)	Parallel Test (NO ₂ , CO ₂ , O ₂ , SO ₂)
Unit 1	Valid until 27 October 2027	Valid until 27 October 2027
Unit 2	Valid until 14 November 2027	Valid until 14 November 2027
Unit 3	Valid Until 21 February 2026	Valid Until 19 July 2026
Unit 4	Valid Until 25 February 2028	Valid Until 25 February 2028
Unit 5	Valid until 25 October 2027	Valid until 30 July 2026
Unit 6	Expired 23 August 2023	Expired 25 October 2022

6. External Atmospheric Emissions License Compliance Audit Report(s):

There was an external compliance audit done in January 2026, conducted at Tutuka Power Station during the 2025/26 financial year, by Savannah Environmental. Refer to the attached AEL compliance audit report.

7. Major upgrades projects:

Table 4. Tutuka Power Station Major Upgrade Projects.

Project	Status
Retrofitting the existing conventional rectifier/transformers with High Frequency Power Suppliers (HFP's).	Unit 1: Complete Unit 2: 04/06/2026 Unit 3: Complete Unit 4: Complete Unit 5: Complete Unit 6: Complete
Dust Handling Plant Refurbishment Project.	Unit 1: 13/10/2027 Unit 2: 04/06/2026 Unit 3: Complete Unit 4: 27/11/2026 Unit 5: 20/09/2027 Unit 6: 31/05/2026
ESP upgrade.	Unit 1: Complete Unit 2: 04/06/2026 Unit 3: Complete Unit 4: 27/11/2026 Unit 5: Complete Unit 6: Complete
Low NOx Burners	Unit 1: 13/06/2027 Unit 2: 04/06/2026 Unit 3: Complete Unit 4: 27/11/2026 Unit 5: 20/09/2027 Unit 6: 31/05/2026
SO3 Plant Project	Unit 1: TBC Unit 2: TBC Unit 3: TBC Unit 4: TBC Unit 5: TBC Unit 6: 31/12/2026

8. Fugitive Dust Management Plan

Fugitive dust management plan for Tutuka Power Station has been developed and monitoring is conducted monthly. For the reporting Period April 2025 to March 2026, there were no exceedance above the industrial limit for this reporting period. All other areas were within the specification, fugitive dust around Tutuka Power Station is managed accordingly. The revised Dust Management Plan is due for submission on the 31st of May 2026 to the Gert Sibande District Municipality Licensing Officer.

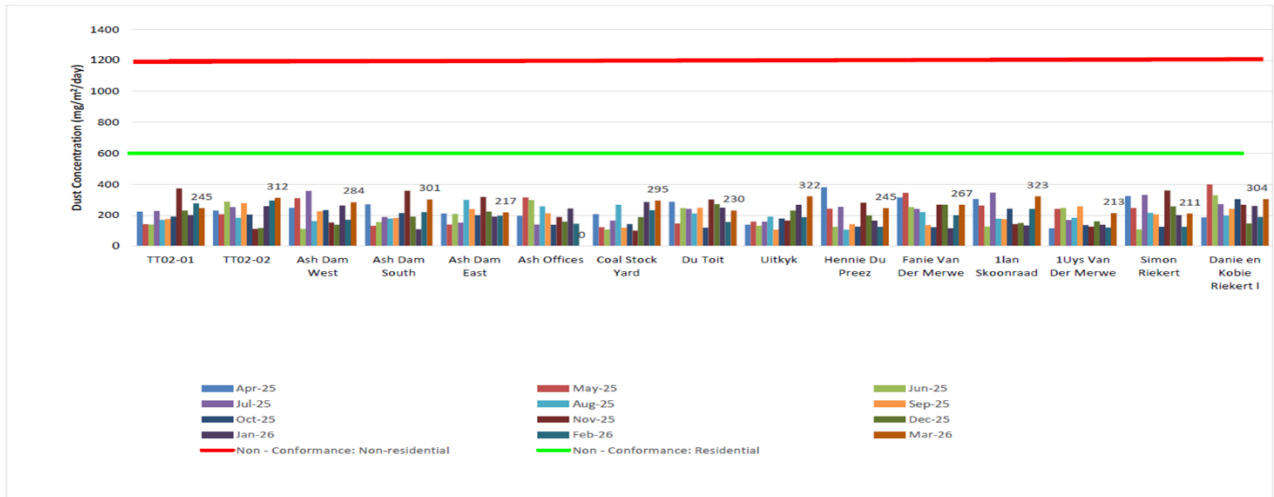


Figure 8: Dust Fallout Monitoring (April 2024-March 2025).

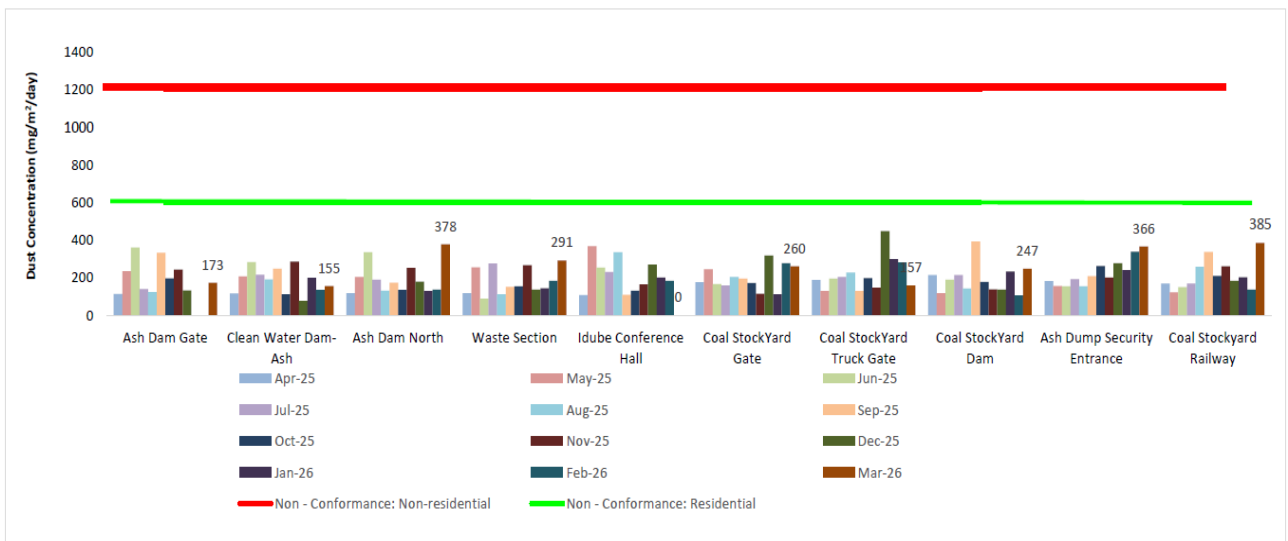


Figure 9: Dust Fallout Monitoring (April 2024-March 2025).

9. Compliance Status to Statutory Obligations

Table 5. Tutuka Power Station Compliance Status to Statutory Obligations.

ITEM	Description of compliance	Results	Score in %
Atmospheric Emission License in terms of the National Environmental Management: Air Quality Act, 2004 (Act No. 39 of 2004) as amended. (Lekwa/Eskom H SOC Ltd TPS/0013/2025/F04)	>50% compliance is regarded satisfactory	15 / 20	75%
Waste Management License in terms of Section 49(1)(A) of the National Environmental Management: Waste Act, 2008 (Act No. 59 of 2008) (12/9/11/L456/6/R1)	>50% compliance is regarded satisfactory	36 / 48	75%
Integrated Water Use License (IWUL) in terms of chapter 4 of the National Water Act, 1998	>50% compliance is regarded satisfactory	78 / 83	93.98%

(Act No. 36 of 1998) (08/C11K/ABCFG/1016)			
Extension of Ash Disposal Facility for Tutuka Power Station, Mpumalanga Province (14/12/16/3/3/3/52)	>50% compliance is regarded satisfactory	27 / 30	89.9%
Water Use License (WUL) in terms of the National Water Act, 1998 (Act No. 36 of 1998) (10/C11L/CI/17331)	>50% compliance is regarded satisfactory	56 / 63	88.89%

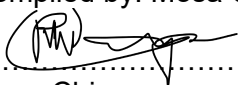
10. Proof of Annual GHG and NAEIS reporting:

Tutuka Power Station submitted its annual emission information on the NAEIS system manually and GHG emissions proof is attached. The rest of the information demonstrating compliance with the emission license conditions is supplied within the monthly emission reports sent to your office.

Hoping the above will meet your satisfaction.

Yours sincerely

Compiled by: Mosa Chipa



.....
Mosa Chipa

SENIOR ADVISOR ENVIRONMENTAL MANAGEMENT: TUTUKA POWER STATION

Supported by: Mmakwena Ramatshela

.....
Mmakwena Ramatshela

ENGINEER BOILER ENGINEERING: TUTUKA POWER STATION

Functional Responsibility: Mankhwela Ramaboea

.....
Mankhwela Ramaboea

GENERAL MANAGER: TUTUKA POWER STATION

Approved by: Bruce Moyo

.....
Bruce Moyo

GENERAL MANAGER: TUTUKA POWER STATION