



Eskom  
Tariff History  
1973 - 1991

# ESKOM TARIFF HISTORY

1973 TO 1991

<b>INDEX :</b>	<b>Page numbers</b>
EXECUTIVE SUMMARY	3
<b>SECTION 1</b> - GENERAL DESCRIPTION (WHITE)	
1.1 INTRODUCTION	4
1.2 HISTORICAL TARIFF PRACTICES	4
1.2.1 TRADITIONAL LPU / SPU RELATIONSHIP	4
1.2.2 TARIFF VERSUS ADDITIONAL CHARGES	4
1.2.3 REGIONAL TARIFFS	5
1.2.4 COAL COST ADJUSTMENT	5
1.2.5 THE SURCHARGE / DISCOUNT CONCEPT	7
1.3 MILESTONE DEVELOPMENTS	
1.3.1 INTRODUCTION OF TARIFF D FOR RURAL APPLICATION	7
1.3.2 THE DE VILLIERS COMMISSION OF INQUIRY	9
1.3.3 1986 NATIONALISATION OF TARIFFS	9
1.3.4 INTRODUCTION OF TARIFF E(OFF-PEAK) AND TARIFF F(VARIABLE USE)	11
1.3.5 INTRODUCTION OF TARIFF S1 FOR SMALL POWER CUSTOMERS WITH LOW USAGE, USING A PREPAYMENT MEASUREMENT SYSTEM	11
1.3.6 INTRODUCTION OF TIME-OF-USE TARIFFS FOR LARGE POWER CUSTOMERS	12
1.4 THE TARIFF INCREASE / TARIFF REVISION PROCESS	13
1.5 SPECIAL PRICES	13
1.6 TARIFF INCREASES	14
<b>SECTION 2</b> - AVERAGE ESKOM PRICE INCREASES (BLUE)	15
<b>SECTION 3</b> - INDIVIDUAL TARIFFS 1973 TO 1985 (YELLOW)	24
<b>SECTION 4</b> - INDIVIDUAL TARIFFS 1986 TO 1991 (GREEN)	58
<b>SECTION 5</b> - TRENDS & GRAPHS (WHITE)	65
<b>SECTION 6</b> - CONCLUSION & REFERENCES	79

## EXECUTIVE SUMMARY

1. It has long been necessary that a comprehensive history of Eskom's tariffs be compiled from the various sources of information available.
2. The cumulative real price increase since 1973 is 11,27% below inflation. The cumulative revenue increase is 35,61% above inflation. This difference is due to tariff restructuring and a change in customer mix and customer consumption profiles over this period.
3. The standard tariffs applicable as at 1973 were Tariff (A) for large power users; Tariff (B) for small power users other than domestic; and Tariff (C) for domestic users. The tariff structures were much the same throughout Eskom's eight Undertakings, although the tariff parameters differed greatly. The differentiation was generally effected by means of a surcharge or discount applied to the tariff.
4. By 1991 the tariff range consisted of Tariff (A) for large power users; Tariff (B) for small power users, general; and Tariff (C) for domestic users; Tariff (D) for small power use, general (mainly applicable to rural supplies); Tariff (E) for large power off-peak use; Tariff (F) for large power variable use; and Tariff S1 for small power, low use where a prepayment measurement system is used. A number of special pricing options such as Time-of-Use options have also been introduced during the past few years.
5. The eight undertakings became five undertakings as from 1985, and at this time the tariff differences between the undertakings were relatively small. Tariffs were rationalised as a result of the De Villiers Commission of Inquiry convened in 1984.
6. The 1986 nationalisation of the tariffs made the application of tariffs easier. Neighbouring customers were no longer charged different tariffs. The transmission percentage surcharge applied to large power tariffs accounted for small differences in transmission charges for varying distances from Johannesburg.
7. The 1986 nationalisation also saw changes to the components included in the tariffs, and those costs which had to be recovered by means of additional charges. This aspect has made it difficult to compare pre-1986 tariffs with post-1986 tariffs. As a result, the historical tariff figures have been covered in two sections, the first from 1973 until the end of 1985, the second from the nationalisation in 1986 until 1991.

## **SECTION 1**

### **GENERAL DESCRIPTION**

#### **1.1 INTRODUCTION**

Historical information is important for any organisation, in order to understand the present situation in terms of past decisions and operating procedures. Many queries are received from customers and other interested parties regarding historical Eskom tariffs. Lessons learnt from past pricing practices must be taken into account when examining different new pricing options.

The role of tariffs in Eskom's operations are of major importance, firstly because they are a source of funds to continue operation, and secondly because of the attention they receive from Eskom customers, who are deeply interested in the price levels and the philosophy behind our pricing policy.

Although the information has previously been available, this has been in a number of diverse records, which needed to be consolidated into one document containing the essential information. An ordered, comprehensive document containing historical tariff information will prove invaluable in providing replies to the queries received, efficiently and timeously, and in referencing particular data needed for tariff studies.

The various relevant Government Gazettes, annual tariff books and other supporting documentation are available at the Pricing Policy Department in Megawatt Park for further reference if necessary.

#### **1.2 HISTORICAL TARIFF PRACTICES**

##### **1.2.1 TRADITIONAL LPU / SPU RELATIONSHIP**

Traditionally the Large Power User (LPU) tariff (Tariff A) was calculated, based on a 60:40 demand:energy ratio for a hypothetical unity power factor and unity load factor customer, based on historical costs and revenue requirements. The Small Power User (SPU) tariffs were then derived from Tariff A.

##### **1.2.2 TARIFF VERSUS ADDITIONAL CHARGES**

Any Pricing Policy requires that a decision be made as to which costs must be covered by tariffs, and which costs must be recovered by means of other, non-tariff charges, such as connection fees, service charges, extension and capital charges.

Eskom's standard tariffs cover the average costs of providing supply. These include the costs of generation, transmission and distribution, a certain amount of capital expenditure on local reticulation networks, and administrative costs.

Extension or capital charges are levied when the costs associated with a particular supply are significantly higher than the corresponding average cost recovered by the standard tariff applicable to the customer concerned, or if the service required by a particular customer includes features not normally provided to other customers. This expenditure could be recovered by means of a monthly extension charge or monthly

capital charge. In certain cases the customer could be required to make an up-front payment before supply is made available.

### **1.2.3 REGIONAL TARIFFS**

Prior to January 1986, Eskom applied different tariffs in the various Undertakings, on the basis that transmission costs to different areas differed substantially, and that distribution and reticulation costs differed greatly depending on local conditions. Following the De Villiers Commission of Inquiry (see paragraph 1.3.2) in November 1984, Eskom nationalised its tariffs, and these nationalised tariffs came into effect as from January 1986. (There is still some debate whether this was the intent of the recommendations made by the De Villiers Commission).

### **1.2.4 COAL COST ADJUSTMENT**

Until the tariffs were nationalised in 1986, the advertised tariffs were subject to a coal cost adjustment on a quarterly basis. In effect, the energy rates were adjusted by a specified amount per number of cents that the actual cost of coal differed from a "base" cost of coal defined at a specified time. Before Eskom's distribution undertakings were interconnected by a national transmission network, the "base" cost of coal specified in the licence granted to each undertaking reflected the cost to Eskom of the coal burnt in the local power stations involved. Even after national interconnection in the early seventies, and the coordinated operation of all Eskom's power stations by a Central Generating Undertaking from January 1972, the regional influence on the "base" cost of coal persisted for many years.

An example of the coal cost adjustment clause is the following one for Natal Undertaking during 1976:

"an energy charge at the rate of 0.27c ... for each kilowatt hour (kW.h) supplied in the month ; provided that the said kW.h having been based on the cost of coal consumed at Congella, Umgeni, Colenso and Ingagane Power Stations being R 4.11 per metric ton shall be adjusted from time to time in the following manner :

The average cost of coal consumed at the said power station shall be determined in Rand per metric ton for each three-monthly period to the end of March, June, September and December. The adjustment to the energy charge rate applicable during the succeeding three months shall be the difference between the average coal cost for the period of three months immediately passed and the aforesaid basic coal cost of R4.11 per metric ton, multiplied by the number of metric tons consumed during the period of three months immediately passed, divided by the total number of kW.h sold by the Licensee in its Natal Undertaking during the same period; provided that the adjustment shall be in complete multiples of 0.005c and that incomplete parts of such multiples shall be neglected. The adjustment so determined shall be added to the basic energy charge rate of 0.27c per kW.h if the aforesaid average coal cost exceeds R4.11, or subtracted from the basic energy charge rate if the average coal cost is less than R4.11 per metric ton."

The survival of the regional influence on the "base" cost of coal after national interconnection in the early seventies was due to the bureaucratic inertia of revising licences granted by the Electricity Control Board. Furthermore, particularly due to the "tilting" of the tariff components to achieve the 60:40 ratio referred to in paragraph 1.2.1 above, the level of the "base" cost of coal was considered far less

important than the need for a mechanism to adjust tariff energy rates as coal costs changed.

The De Villiers Commission of Inquiry gave much attention to the manner in which Eskom raised its tariff levels whenever required to cover its costs of supply. The Commission found that a significant cause for customer dissatisfaction was the covert nature of the coal cost adjustment mechanism, giving rise to a tariff increase over and above the effect of any surcharge increase announced officially.

The quarterly adjustment of energy rates for changes in coal cost was abandoned from the beginning of 1986, as a result of the De Villiers Commission of Inquiry recommendation that any increases in the price of electricity should occur only once a year and that such increases should include the coal price adjustment for the year concerned. At the same time, the cost of coal had become relatively unimportant when weighed against the large capital costs of new generation capacity, and the confusion and large workload involved in adjusting these rates on a quarterly basis, as compared to the relatively small effect on Eskom's income, made the dropping of the concept a welcome move.

### **1.2.5 THE SURCHARGE / DISCOUNT CONCEPT**

The concept of applying a surcharge or discount to a defined tariff formula originated from the legislation governing Eskom's manner of charging for supplies of electricity. To avoid cumbersome bureaucratic obstacles to periodic tariff increases, the Electricity Act (Act no 40 of 1958) allowed Eskom to adjust tariff levels to cover its costs of supply, provided such adjustments affected all customers "in equal proportions".

Eskom's approach in complying with this legal requirement was to obtain the Electricity Control Board's approval of any changes to tariff formulae. The approved tariff formulae were then made subject to discounts or surcharges for the purpose of calculating customers' accounts. For many years when inflation had not yet become rampant, regular upward adjustments were made to surcharges without seeking the approval of the Electricity Control Board.

The tariffs are set with particular rates at a particular time. Instead of changing these rates on a regular basis (sometimes a number of times during one year), any future changes to the tariffs are effected by applying a surcharge or discount. For example, where a surcharge of 2.5 percent is applicable, the notified tariff rates are applied, the total amount calculated, and the surcharge of 2.5 percent added to the total. In some cases, the same formulae are applied in different undertakings, but the surcharge or discount may differ depending on local costs.

The procedure followed in terms of current legislation when amendments to tariffs become necessary is described in section 1.4 below.

## **1.3 MILESTONE DEVELOPMENTS**

### **1.3.1 INTRODUCTION OF TARIFF D FOR RURAL APPLICATION**

Prior to 1982, Eskom had three basic tariffs, viz Tariff A for Large Power customers; Tariff B for Small Power customers other than those supplied under Tariff C; and Tariff C for domestic supplies. Although there was a Tariff D applicable in the Rand and Orange

Free State Region during the early '70's, this was dropped in 1974, after which most farming supplies were charged in terms of Tariff B.

After prolonged representations on the part of the South African Agricultural Union (SAAU) to both the Government and Eskom, Tariff D was introduced by Eskom in January 1982 for application in rural areas. The new tariff was structured in much the same way as Tariff B, except that the high energy rate was now applied to the first 800 kW.h of consumption per month instead of 500 kW.h as for Tariff B. This was done in order to partly recover the higher costs associated with rural electrification.

The remaining costs of providing supply not covered by the standard tariff were recovered by means of an additional fixed monthly charge (Monthly Extension Charge - MEC) now known as a "Monthly Rental". This MEC was calculated according to a formula based on recovering these additional costs over a period of 23 years. The MECs applied were in many cases amounts of hundreds of rands, and the main thrust of the SAAU drive for nationalisation of tariffs and pooling of costs was in order to bring these high MECs down.

With the nationalisation of the tariffs incorporating the pooling of costs and the inclusion of a larger amount of capital expenditure into the standard tariff (see 1.3.3 below), a "kilometer factor" was introduced. Although the new tariff was designed to include the cost of 1 km of line, last minute representation to Eskom by the SAAU and the Minister of Agriculture resulted in a 2 km factor being introduced. In effect, existing customers had their capital charges reduced by an amount equivalent to the cost of 2 km of line, and monthly capital charges for new customers were only charged on line lengths in excess of 2 km per customer.

After the investigation into the profitability of Tariff D done during 1988, it was seen that Tariff D was not covering the costs of supply. This was because the tariff was designed based on an average consumption of 1000 kW.h per month, whereas the actual average usage was in the region of 750 kW.h per month; and also because the costs of construction had risen drastically over the intervening years.

As a result of this investigation, a change was made during 1989 to the monthly capital charges structure, whereby the costs of only 200 meters of line were calculated to be included in the standard tariff (not 2 km), beyond which a R/meter monthly capital charge was applied.

### **1.3.2 DE VILLIERS COMMISSION OF INQUIRY**

The De Villiers Commission of Inquiry was appointed in May 1983, chaired by Dr W J De Villiers. The terms of reference of this Commission included "to inquire into and report on the principles of electricity supply and the impact of price determination and existing tariff structures on the financial policy of the country, with special reference to inflation and economic growth."

The following basic requirements were identified in order to achieve an economically justifiable and understandable tariff structure according to the guidelines of the Commission of Inquiry :

- The establishment of a uniform national tariff structure.
- To the extent that it could be economically justified, extension charges were to be removed and costs pooled.

- To encourage customers, by means of the tariff, to make the best use of Eskom's generation equipment during periods when such equipment is not fully utilised, and avoid load patterns which added disproportionately to the demand during periods when Eskom's generation capacity was fully utilised.
- To encourage customers to use electricity more efficiently.
- To promote the possibility of interruptible supplies to some larger customers with compensatory tariff benefits.

The first step towards implementing the nationalised tariffs recommended by the Commission was for the six existing licences to be consolidated. The Eskom National Licence, 1986 was granted to Eskom in terms of the Electricity Act, 1958 (Act 40 of 1958) on 8 October 1985.

### **1.3.3 1986 NATIONALISATION OF TARIFFS**

It is difficult to compare tariffs prior to 1986 with those after 1986, because the nationalisation opportunity was used to make other adjustments at the same time, such as rectifying the imbalance of the 60:40 ratio which had developed over the past few years, and including a larger amount of capital redemption in Tariff D.

The following salient points arising out of Recommendation 6 of the Commission of Inquiry were put to the Electricity Council and the Electricity Control Board, for implementation from 1 January 1986 :

- Discard the concept of undertakings, and implement a national tariff structure, with annual tariff increases;
- distinguish between demand and energy costs, where applicable ;
- determine cost of transmission to agreed reference points ;
- pool costs for groups of consumers; and
- create tariff structures that satisfy load management requirements.

Due to the nationalisation and restructuring of the tariffs and the rectifying of certain imbalances, certain customers on particular tariffs enjoyed a decrease of as much as 28 % in their electricity costs, while other customers faced increases in the order of 6 %.

At the same time, the monthly extension charges and capital charges, particularly for supplies in rural areas, were recalculated, because the tariff itself contained a larger capital component. For many of the smaller supplies which had been in existence for some time, this meant that the monthly capital charges were cancelled completely, while most of the newer supplies enjoyed a substantial reduction.

Tariff D supplies were particularly affected by this reduction of monthly capital charges. Prior to the nationalisation of the tariffs, extension charge revenue formed a relatively small percentage of the total revenue by tariff category of all tariffs except Tariff D (Tariff A - 1.4 % ; Tariff B - 4.1 % ; Tariff C - 1.0 % ; Tariff D - 16.7 %). The pooling of costs was viewed favourably by the SAAU, although their interpretation of the Commission recommendation was that this pooling would be of the costs of ALL customers, not only pooling within particular customer groups. This created the expectation that large businesses would in fact subsidise the agricultural sector. This was not the aim of the recommendation to pool costs, and this would not have been acceptable to Eskom's larger customers.

The transmission percentage charge was introduced to take account of differences of transmission costs between different areas (see Section 3 for further information).



#### **1.3.4 INTRODUCTION OF TARIFF E (OFF-PEAK) AND TARIFF F (VARIABLE USE)**

As a direct result of the De Villiers Commission recommendation, Tariff E for off-peak use was introduced for large power users at the same time as the nationalisation of Eskom's tariffs. This tariff was based on Tariff A, but allowed for the maximum demand charge to be levied on the maximum demand measured during peak hours only. This encouraged customers to move their peak demand so that it did not occur at the same time as Eskom's system peak demand. A minimum overall c/kW.h rate was applied to prevent the case whereby load shifting could result in the customer actually paying less than the cost of generating the supply.

Tariff F for variable use, also applicable to large power users, was introduced with effect from July 1987, to address problems experienced by some large power farming customers. Due to their very low load factor operations, on Tariff A they were having to pay very high demand charges and almost zero energy charges. Tariff F only catered for kV.A demand (not kW), at 380/220 volts or 11 kV or 22 kV. The qualifying voltage contrived to limit this tariff to large power farming customers only. A maximum overall c/kW.h rate was applied to prevent the customer paying excessive electricity costs.

At first there was some reluctance on the part of some Eskom personnel to apply this tariff, as the related loss of revenue caused some concern. This tariff was of particular interest to the larger irrigation farming operations, and grew in popularity in this sector over the years, until now when it is accepted as a valid pricing tool for a particular market segment.

#### **1.3.5 INTRODUCTION OF TARIFF S1 FOR SMALL POWER CUSTOMERS WITH LOW USAGE, USING A PREPAYMENT MEASUREMENT SYSTEM**

In the late 1980's, Eskom saw the need to electrify the many millions in the country without electricity. This was a unique market for many reasons, and could not be reached using conventional methods, mainly due to the large numbers and the associated exorbitant costs, and because of the social circumstances of most of these customers. In order to begin reaching these customers, it was found that prepayment measurement systems would be most efficient and cost-effective.

Due to the fact that the existing standard tariffs included amounts to cover the costs of meter-reading and billing, which would in this case would not be applicable, and also because the costs of providing supply differed substantially from the conventional methods, it was necessary to develop a pricing package for this "new" type of supply.

The aim of the tariff was to provide electricity at an affordable price while still covering the costs of generation, transmission and distribution, including all the capital needed to provide the supply. The tariff was called "S1" as it was the first of an envisaged range of small power user tariffs which would ultimately replace the existing small power Tariffs B, C and D.

The tariff was approved by the Electricity Council as a starting point to begin electrifying this market, on the understanding that once experience of this market was obtained, the tariff could be adjusted if necessary. The Tariff was published in the Government Gazette according to the legal requirements, and came into effect as from 1 September 1989. As the tariff had only just been introduced and was in fact only applied to a handful of customers at the time, it was exempted from the January 1990 tariff increase, but since then has increased at the same time and rate as Eskom's other tariffs.

### **1.3.6 INTRODUCTION OF TIME-OF-USE PRICES FOR LARGE POWER CUSTOMERS**

During 1989 and 1990 two time-of-use pricing options were developed, one (T1) for supplies of 1 megavolt-ampere or larger with a maximum demand charge, and the other (T2) without a maximum demand charge for supplies of 100 kilovolt-ampere up to 5 megavolt-ampere.

Due to this being a completely new direction for electricity pricing in South Africa, these prices were viewed with some degree of suspicion by customers, particularly as there was little information available as to how this would affect them in the long-term. Due to this uncertainty and the need for more practical information regarding the effect on customers, the Electricity Control Board instructed that these time-of-use prices should be introduced as pricing options available by choice to particular customers in particular circumstances. The first Time-of-Use customer, Henry Ford, was taken onto the system on Friday 10 May 1991.

### **1.4 THE TARIFF INCREASE / TARIFF REVISION LEGAL PROCESS**

The legal process to be followed when increasing Eskom's tariffs by a certain percentage across the board differs from that followed when increasing or altering only one of the tariffs, or introducing a new tariff (i.e. when there is a change in the status quo).

When effecting an amendment to prices in general in equal proportions, the following procedure is followed:

- The increase is advertised in the press prior to the date of application.
- The increase is applied as from the notified date (accounts may be pro-rated depending on when meter reading takes place).

When however, the tariffs are not being increased in the same proportion for some reason, or a tariff structure is being altered, or a tariff introduced or deleted, the procedure followed in terms of section 15 of the Eskom Act, 1987 (Act 40 of 1987), is:

- The proposed change is advertised in the Government Gazette and two national newspapers with a countrywide circulation, one English and the other Afrikaans.
- The interested public are given a period (at least 60 days) during which objections to the proposed changes may be lodged with the Electricity Control Board.
- Any objections are heard by the Electricity Control Board who make a decision or recommendation.
- Subject to the approval of the Electricity Control Board the changes are implemented as advertised.

It is important to note that in order to introduce any new tariff, or make any changes to the tariff structure in terms of existing legislation, a lengthy process must be followed. Before the proposed changes can be advertised, the change must first be thoroughly researched for possible revenue and other implications; and the proposals must be put to the Management Board and Electricity Council for their approval.

### **1.5 SPECIAL PRICES**

Over the years certain special prices have been applied in particular instances, to suit particular special circumstances. These special prices are negotiated with individual customers and are applied in few cases.

More recent examples of special, non-standard pricing options include the application of capacity allocation in certain cases (made possible because of Eskom's excess generating capacity), the development of pricing packages for remote area power supplies, and the introduction of the Time-of-Use pricing options during 1991.

## **1.6 TARIFF INCREASES**

In the earlier period covered, tariff increases were calculated bearing in mind Eskom's revenue requirements. Modelling was done to ensure that no individual customer in a particular undertaking should have an unacceptably high increase. The proposed increases were discussed at parliamentary level, and the increase allowed was sometimes adjusted for "strategic" reasons. In some years the tariff increases were thus kept artificially low, which in most cases resulted in higher increases in the following years in order to address issues such as cash flow and capital constraints.

In later years however, as organisations became more cost effective, Eskom attempted to keep tariff increases to a minimum. Over the past few years the tariff increases have been kept below the inflation rate in an attempt to slow the inflation rate and assist economic recovery, and this trend is set to continue in the immediate future.

## SECTION 2

### AVERAGE ESKOM INCREASES

Although the tariffs differed between the various undertakings, uniform tariff increases were sometimes applied. Based on the tariff increase announced, various trends can be seen, which are useful for comparison purposes. Table 1 shows these figures and various price and revenue comparisons, covering the period from April 1973 to January 1992.

#### NOTES TO TABLE 1 - ESKOM PRICE AND REVENUE INCREASES IN REAL AND ACTUAL TERMS 1973-1992

**1. Month / Year of Increase**

This column shows the month and year in which an increase became effective.

**2. CPI**

The Consumer Price Index (CPI) is based on 1990 = 100. The figures shown are the CPI values for the particular month in which the increase was applied, not the annual CPI.

**3. CPI % Increase**

This shows the % increase in CPI from one price increase to the next.

**4. Notified Average Price Increase %**

Prior to 1986, the tariff increases were not standard across all tariffs and Undertakings/Regions. In some cases in earlier years the average increase has been estimated, where this information is not available.

In January 1980 there was a tariff increase of 5.5 % in the Orange River Undertaking only. As this was a very small Undertaking and the increase had only a very small effect on Eskom's financial position, this increase has not been included in the table.

**5. Real Price Increase %**

The real price increase shows the notified average price increase deflated by the CPI for that month.

**6 & 7. Cumulative Real Price Increase %**

The cumulative real price increase shows the effect of adding the year on year real price changes over the total period based on the past 19 and 10 years respectively.

**8. Total Eskom Revenue (R million)**

This figure represents Eskom's total actual revenue for the year. (1992 figures not available yet).

**9. Annual CPI % increase**

This is the % increase in CPI average from year to year.

**10. Actual Revenue (c/kW.h)**

This is Eskom's average selling price in c/kW.h.

**11. Percentage change in actual revenue (c/kW.h)**

**12. Real Revenue (c/kW.h)**

This shows the actual revenue (in c/kW.h) after being deflated by the CPI. This index is based on 1990 = 100.

**13. % Change in Real Revenue (c/kW.h)**

This shows the % change in real revenue in c/kW.h from year to year.

**14. Cumulative Real Revenue Increase (c/kW.h)**

This shows the effect of adding the year on year changes of real revenue, in c/kW.h, using 1973 as the base year.

**THE FOLLOWING GRAPHS ARE ATTACHED :**

GRAPH 1: ESKOM ANNUAL PRICE INCREASES (NOTIFIED VS REAL)

GRAPH 2: ESKOM C/KWH REVENUE INCREASE COMPARED WITH INFLATION

GRAPH 3: ESKOM CUMULATIVE REAL INCREASES  
(VS PRICE) C/KWH REVENUE

GRAPH 4: ESKOM ANNUAL REAL INCREASES  
(VS PRICE) C/KWH REVENUE

TABLE 1 - ESKOM PRICE INCREASES IN REAL AND ACTUAL TERMS

1973 - 1992

1	2	3	4	5	6	7	8	9	10	11	12	13	14
MONTH / YEAR OF INCREASE	CPI MONTH OF INC. 1990=100	CPI % INCREASE	NOTIFIED AV. PRICE INCREASE %	REAL PRICE INCREASE %	CUM. REAL PRICE INCREASE (1973 BASE)	CUM. REAL PRICE INCREASE (1981 BASE)	TOTAL REVENUE R MILL	ANNUAL CPI INCREASE 1990=100	ACTUAL REVENUE c/kW.h	% CHANGE IN ACTUAL REVENUE c/kW.h	REAL REVENUE c/kW.h (1990 BASE)	% CHANGE IN REAL REVENUE c/kW.h	% CUM. REAL REVENUE INCREASE (1973 BASE)
APRIL	73	11.2	4.67%	7.50%	2.83%	2.83%	£302	9.40%	0.6484	*****	5.4411	*****	*****
APRIL	74	12.3	9.82%	1.10%	-8.72%	-5.89%	£359	11.60%	0.6822	5.21%	5.2328	-3.83%	-3.83%
JANUARY	75	13.7	11.38%	16.20%	4.82%	-1.08%	£460	13.50%	0.7950	16.53%	5.4642	4.42%	0.43%
APRIL	76	15.7	14.60%	15.00%	0.40%	-0.67%	£656	11.20%	1.0360	30.31%	6.2737	14.81%	15.30%
SEPT	76	16.4	4.46%	13.00%	8.54%	7.87%							
JANUARY	77	16.9	3.05%	25.00%	21.95%	29.82%	£1,031	11.00%	1.5353	48.19%	8.3609	33.27%	53.66%
JANUARY	78	18.8	11.24%	14.50%	3.26%	33.08%	£1,302	11.00%	1.7887	16.50%	8.7756	4.96%	61.28%
JANUARY	79	21	11.70%	4.10%	-7.60%	25.47%	£1,529	13.20%	1.8980	6.11%	8.3890	-4.40%	54.18%
JULY	80	25.6	21.90%	7.30%	-14.60%	10.87%	£1,772	13.80%	2.0242	6.65%	7.9035	-5.79%	45.26%
JANUARY	81	27.5	7.42%	5.50%	-1.92%	8.95%	£2,141	15.20%	2.2811	12.69%	7.8266	-0.97%	43.84%
JANUARY	82	31.4	14.18%	13.10%	-1.08%	7.86%	£2,695	14.70%	2.8038	22.91%	8.3507	6.70%	53.47%
JULY	82	33.8	7.64%	6.60%	-1.04%								
JANUARY	83	35.9	6.21%	14.50%	8.29%	15.11%	£3,302	12.40%	3.3607	19.86%	8.7265	4.50%	60.38%
JANUARY	84	39.6	10.31%	6.00%	-4.31%	10.80%	£3,832	11.50%	3.5842	6.65%	8.2801	-5.11%	52.18%
JANUARY	85	45.1	13.89%	10.00%	-3.89%	6.91%	£4,625	16.30%	4.1179	14.89%	8.5319	3.04%	56.80%
SEPT	85	50.4	11.75%	10.00%	-1.75%								
JANUARY	86	54.5	8.13%	10.00%	1.87%	7.03%	£5,845	18.60%	4.9803	20.94%	8.8725	3.99%	63.06%
JULY	86	58.3	6.97%	10.00%	3.03%								
JANUARY	87	63.2	8.40%	12.00%	3.60%	13.65%	£7,047	16.10%	5.7512	15.48%	8.6390	-2.63%	58.77%
JANUARY	88	72.2	14.24%	10.00%	-4.24%	9.41%	£8,159	12.80%	6.3004	9.55%	8.1516	-5.64%	49.81%
JANUARY	89	81.8	13.30%	10.00%	-3.30%	6.11%	£9,272	14.70%	6.9012	9.54%	7.9157	-2.89%	45.48%
JANUARY	90	94.2	15.16%	14.00%	-1.16%	4.95%	£10,736	14.30%	7.8842	14.24%	7.8842	-0.40%	44.90%
JANUARY	91	107.7	14.33%	8.00%	-6.33%	-1.38%	£11,726	15.30%	8.4551	7.24%	7.3331	-6.99%	34.77%
JANUARY	92	125	16.06%	9.00%	-7.06%	-8.44%	NA	NA	NA	NA	NA	NA	NA

## DISCUSSION OF TRENDS

Following are some discussion of the graphs and observations made from these:

Graph 1 shows the Eskom price increases comparing notified with real price. Where more than one increase were applied in a year the combined effect for the year is shown.

- There has always been a strong correlation between the Eskom price increase and the rate of inflation. Increases below inflation are usually followed by increases above inflation except for the period from 1988 in which increases have been steadily below inflation.
- The sharp rise in prices in 1977 can be explained by the fact that tariffs were kept artificially low prior to 1977 for political and rational economic reasons despite the fact that new power stations were being built at the time, requiring higher levels of revenue.

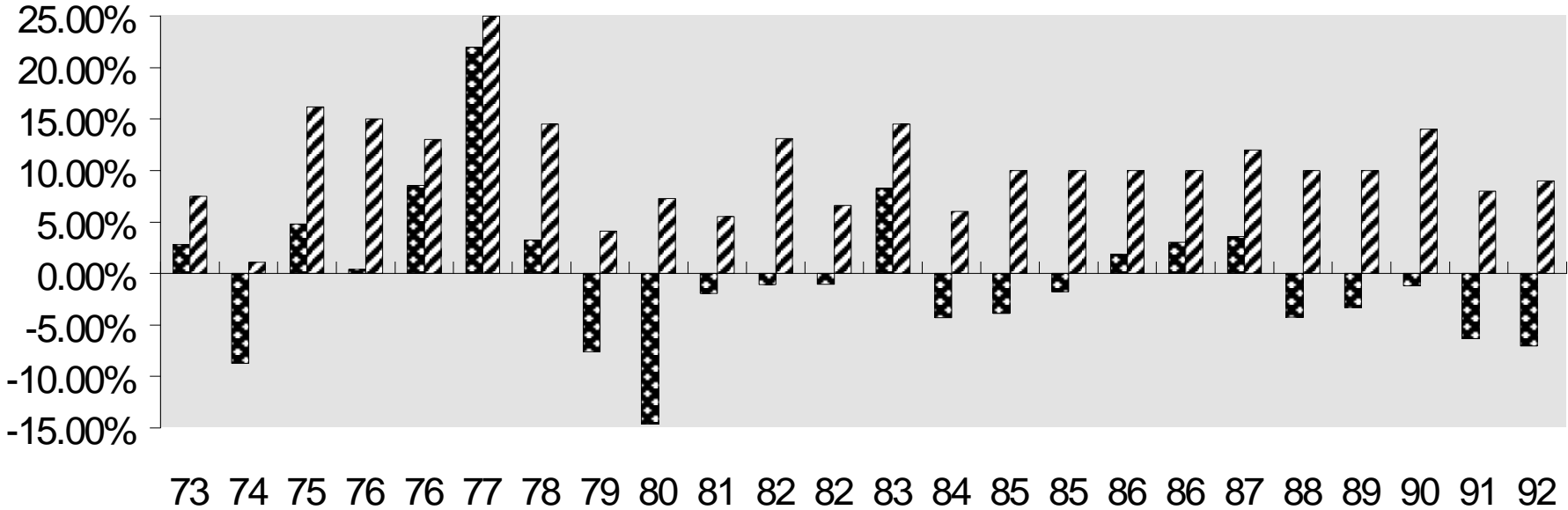
Graph 2 shows Eskom's Revenue increase in c/kWh sold compared with inflation (Annual CPI increase).

- Up to the period 1978, c/kWh revenue increased at a much higher rate than inflation. In the period up to 1992, c/kWh revenue correlates closely with inflation. Since 1988, c/kWh revenue increases have been below inflation.
- This graph shows the combined effect of the Eskom notified price increases and the changes in tariff structure, customer mix and customer behaviour which affect the effective price increase (c/kWh revenue increase). This is better explained in graphs 3 and 4.

Graph 3 shows Eskom's cumulative real increases comparing price with c/kWh revenue.

- From 1973 to 1992 Eskom notified price increases have dropped in real terms by 11,27%. From 1982 to 1992 notified price increases dropped by 16,31% in real terms.
  - It is clear that since 1973 there has been a buildup in difference between the notified price increases and the revenue (c/kWh) achieved. Revenue has increased in relation to notified prices from 1973 to 1991 by 40,02%.
  - The year to year contributions to this difference is shown in Graph 4, with the revenue increase being higher than the price increase. Since 1988 increases have been much the same.
  - This trend can be explained by the following :
    - \* Since 1973 many more small customers than large customers were connected. These customers typically pay higher prices.
    - \* High growth in small customer consumption, including that in municipalities, which usually come at a higher price.
    - \* This effect would have been greater had it not been for the fact that many large customers have changed their usage patterns so as to reduce the effective price paid.
    - \* A smaller percentage of very large, high load factor customers were connected than medium sized customers with poorer load factors.
    - \* During this period tariffs have been restructured and new tariffs added. This also affected this relationship between price and revenue.
-

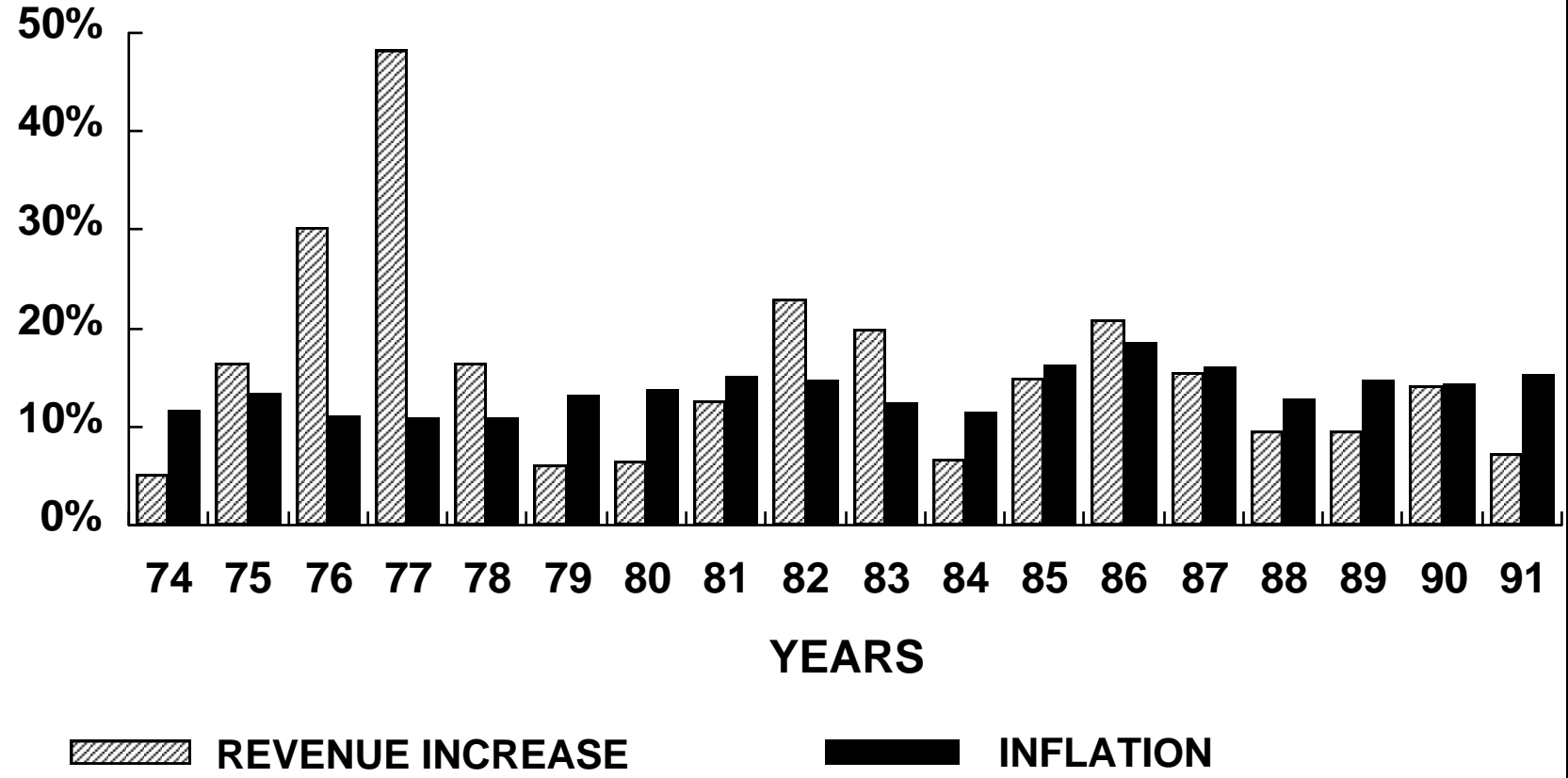
### ESKOM PRICE INCREASE NOTIFIED VS REAL



■ ACTUAL PRICE INC ■ REAL PRICE INC



# REVENUE (C/KWH) INCREASE COMPARED WITH INFLATION (1973-1991)

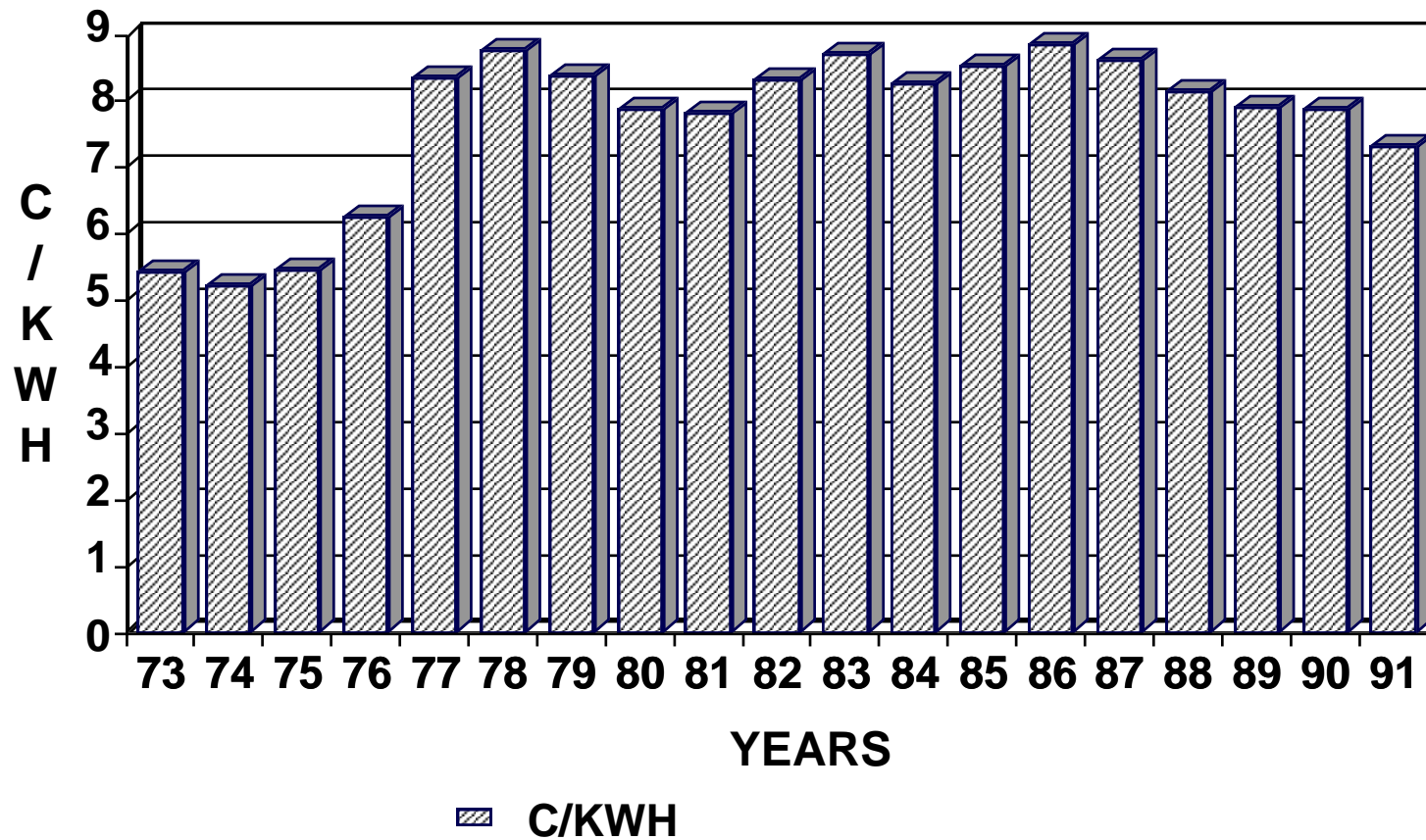


# ESKOM CUMULATIVE INCREASES PRICE VS REVENUE (1973-1991)

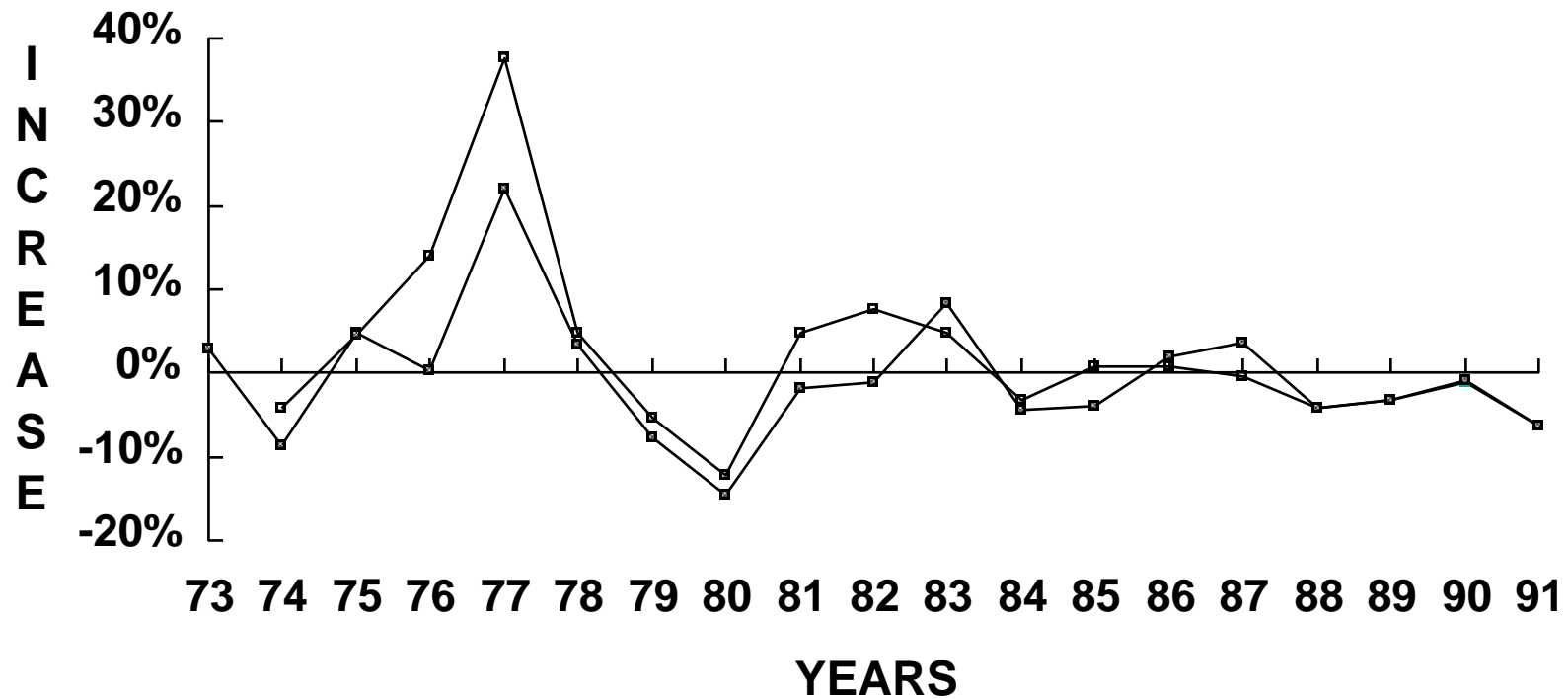


+ REAL PRICE    □ REAL REVENUE

# ESKOM - REAL PRICE OF ELECTRICITY 1973-1991



# ESKOM ANNUAL INCREASE REAL PRICE VS REAL REVENUE (1973-1991)



—■— REAL PRICE —■— REAL REVENUE

## SECTION 3

### INDIVIDUAL TARIFFS - 1973 TO 1985

This section covers the individual regional tariffs applied in the different Undertakings until the 1986 nationalisation of the tariffs. The concept of a surcharge or discount is applied. Table 2 contains the different surcharges or discounts applied at different times in each of the undertakings. Each tariff is broken down into different tables showing, first, the different components as published in the Schedule of Standard Prices before application of the percentage surcharge or discount, and thereafter, each component after application of the surcharge or discount.

#### Terminology

A "charge" is the amount actually charged to the customer, whereas a "rate" is the figure which is applied to another figure in order to determine the charge. e.g. A demand charge at the rate of \*\*\* R/kV.A. The rate is applied to the number of kV.A to determine the charge in Rands.

#### 3.1 NOTES APPLICABLE TO ALL TABLES

- All charges are applied per month.
- The basic charge is applied whether any electricity is taken or not.
- The Rand and Orange Free State Extension Area was absorbed by the Rand and Orange Free State Undertaking as from July 1980.
- Cape Eastern Undertaking was incorporated into Orange River Undertaking from 1981, and the Border and Orange River Undertakings became the Eastern Cape Undertaking as from 1985. At the same time, Cape Western Undertaking and Cape Northern Undertaking amalgamated to form the Northern and Western Cape Undertaking.

#### TABLE 2 - PERCENTAGE SURCHARGE (+) /DISCOUNTS (-) APPLIED PER UNDERTAKING TO THE NOTIFIED TARIFFS

- In order to limit the need to restructure tariffs each time that an adjustment for inflation was required, the surcharge/discount concept was introduced. This allowed the different conditions in different regions (undertakings) to be taken into account without having to go the long legal route of having to publish the proposed changes in the Government Gazette, and await and deal with any objections thereto.
- The surcharge or discount changed in different areas at different times.
- The surcharge or discount is applied by calculating the total account and then applying the surcharge (+) or discount (-).
- The concept of a surcharge or discount was dropped with effect from July 1987.
- Two tariff increases were imposed during 1976 due to the continued escalation of costs and the need to raise more of the capital requirement by internal financing. An increase was applied from April 1976 and a further increase was applied from September 1976. The tariffs were amended whilst incorporating the September increase, with initial discounts being applied in all Undertakings.

#### 3.2 TARIFF A : LARGE POWER USERS

- Although the definition of Tariff A varied across the different undertakings, this tariff was generally applied to a consumer whose notified maximum demand was 25 kilovolt ampere or more of three phase alternating current at a frequency of 50 cycles per second and at a particular voltage (see notes to table 3).

- The tariff structure consisted of :

	Basic Charge per month (R)
plus	Demand Charge (R/kV.A or R/kW)
plus	Energy Charge (c/kW.h)
times	Percentage Surcharge or Discount

**TABLE 3 - TARIFF A : BASIC CHARGE IN RANDS NOTIFIED IN THE SCHEDULE OF STANDARD PRICES (BEFORE APPLICATION OF THE SURCHARGE/DISCOUNT)**

The "basic" charge reflected is the charge notified in the relevant published licence. This charge is payable whether any electricity is taken or not.

The basic charge is applied irrespective of supply voltage.

**TABLE 4 - TARIFF A : DEMAND RATES NOTIFIED IN THE SCHEDULE OF STANDARD PRICES (BEFORE APPLICATION OF THE SURCHARGE/DISCOUNT)**

The demand rates are per kV.A, except for the Rand and Orange Free State Undertaking, where until December 1983 the demand was measured in kilowatt. From January 1984 all new supplies were measured in kV.A, and existing kW customers could elect to convert their supplies to kV.A.

The demand rates which apply are for the following supply voltages :

- **Cape Eastern Undertaking :**

January 1973 - August 1976  
11 000 volts or as otherwise agreed

September 1976 - December 1980  
(a) above 380/220 volts  
(b) at 380/220 volts

- **Border Undertaking :**

January 1973 - August 1976  
(a) 11 000 volts or 3 300 volts or 2 200 volts

September 1976 - December 1984  
(a) above 380/220 volts  
(b) at 380/220 volts

- **Orange River Undertaking :**

January 1973 - August 1976

11 000 volts or as otherwise agreed

September 1976 - December 1984

- (a) above 380/220 volts
- (b) at 380/220 volts

- **Cape Western Undertaking :**

January 1973 - August 1976

- (a) 2 000 volts or higher
- (b) less than 2 000 volts

September 1976 - December 1984

- (a) above 380/220 volts
- (b) at 380/220 volts

- **Cape Northern Undertaking :**

January 1973 - June 1981

11 000 volts

July 1981 - December 1984

- (a) above 380/220 volts
- (b) at 380/220 volts

- **Natal Undertaking :**

January 1973 - August 1976

- (a) 132 000 volts
- (b) 58 000 volts
- (c) 33 000 or 22 000 or 11 000 or 6 600 or 2 200 volts
- (d) 380/220 volts

September 1976 - December 1985

- (a) 132 000 volts
- (b) above 380 volts below 132 000 volts
- (c) at 380/220 volts

- **Eastern Transvaal Undertaking :**

January 1973 - September 1973

- (a) 11 000 volts or 6 600 volts or 3 300 volts or 2 200 volts

October 1973 - December 1985

- (a) above 380/220 volts
- (b) at 380/220 volts

- **Rand and Orange Free State Undertaking :**

January 1973 - December 1983

An agreed voltage

January 1984 - December 1985

- (a) above 380/220 volts (kV.A charge)

- (b) at 380/220 volts (kV.A charge)
- (c) above 380/220 volts (kW charge)
- (d) at 380/220 volts (kW charge)

- **Eastern Cape Undertaking :**

January 1985 - December 1985

- (a) above 380/220 volts
- (b) at 380/220 volts

- **Northern and Western Cape Undertaking :**

January 1985 - December 1985

- (a) above 380/220 volts
- (b) at 380/220 volts

The "70% rule" applied in most undertakings (Border, Orange River, Cape Eastern, Cape Western and Natal until August 1976 and Eastern Transvaal until July 1980) i.e. " a demand charge at the rate of ... per month for each kilovolt ampere of the maximum demand supplied in the month; provided that if the consumer should fail during the month to take any supply or if the maximum demand taken by the consumer in the month should be less than 70% of the notified maximum demand for the time being in force, the Licensee shall be entitled to charge, ... for 70% of the said notified maximum demand;"



**TABLE 5 - TARIFF A : NOTIFIED ENERGY RATES IN c/kW.h TAKING INTO ACCOUNT THE QUARTERLY COAL COST ADJUSTMENT (BEFORE APPLICATION OF THE SURCHARGE/DISCOUNT, NOT ADJUSTED 1973 TO 1975)**

The figures reflected for 1973 to 1975 inclusive are the energy charge rates as notified in the Schedule of Standard Prices, and have not been adjusted for the coal cost, as these figures are not available.

The figures reflected from 1976 to 1985 are the energy rates after application of the coal cost adjustment.

**TABLE 6 - TARIFF A : EFFECTIVE BASIC CHARGE IN RANDS (AFTER APPLICATION OF THE SURCHARGE/DISCOUNT)**

This table reflects the basic charges from Table 3 after application of the surcharges or discounts from Table 2.

**TABLE 7 - TARIFF A : EFFECTIVE DEMAND RATES (AFTER APPLICATION OF THE SURCHARGE/DISCOUNT)**

This table reflects the demand charges from Table 4 after application of the surcharges or discounts from Table 2.

**TABLE 8 - TARIFF A : EFFECTIVE ENERGY RATES IN c/kW.h (AFTER APPLICATION OF THE SURCHARGE/DISCOUNT)**

This table reflects the adjusted energy rates from Table 5 after application of the surcharges or discounts from Table 2.

### **3.3 TARIFF B : SMALL POWER USERS**

Once again the tariff definition varied across the different Undertakings. In most cases this tariff was initially applied to "...a consumer whose maximum demand rarely exceeds 50 kilovolt ampere and at no time exceeds 75 kilovolt ampere, made available at a nominal voltage of 380 volts between phases and 220 volts between phase and neutral, for use as motive power or for heating or for electro-chemical process, ..."

In the Rand and Orange Free State Undertaking, Tariff B was used for the mines, and not for small power users. Tariff D was at that time (1973 - 1974) the tariff equivalent to Tariff B in the other Undertakings.

By 1982 the tariff definition had changed to "... whose maximum demand at no time exceeds 100 kV.A (or kW) made available at a nominal voltage of 380 volts between phases and 220 volts between phase and neutral or as otherwise agreed, excepting supplies provided under Tariffs (C) and (D), ..."

The tariff structure initially consisted of :

	Basic Charge per month (R)
plus	Demand Charge (R/kW in R&OFS, R/A elsewhere)
plus	Energy Charge (c/kW.h)
times	Percentage Surcharge or Discount

By the early seventies, the Rand and Orange Free State Undertaking in particular was expressing dissatisfaction with the ampere demand tariff. The test engineers of the undertakings also condemned ampere demand meters on the grounds that they were inaccurate, unreliable, and costly to test and calibrate. By the mid-seventies it had also become apparent from discussions with the agricultural sector that the ampere demand tariff had not fulfilled its purpose of reducing costs by improvement of load factors.

By 1977 the demand charge concept had been dropped by all except the Northern Cape Undertaking, where it was dropped in July 1981. The tariff structure then consisted of :

	Basic Charge per month (R)
plus	High Energy Charge (c/kW.h) for first 500 kW.h
plus	Energy Charge (c/kW.h) for balance of consumption
times	Percentage Surcharge or Discount

Notes to Tables :

**TABLE 9 - TARIFF B : BASIC CHARGE IN RANDB NOTIFIED IN THE SCHEDULE OF STANDARD PRICES (BEFORE APPLICATION OF THE SURCHARGE/DISCOUNT)**

This tariff was applied to all Small Power Users excluding domestic users.

The basic charge reflected is the charge notified in the relevant published licence.

The Rand and Orange Free State Undertaking did not apply a basic charge until April 1974. From then until December 1979, they applied two basic charges, one for a single phase supply and the other for a three phase supply.

The revised tariff structure was implemented in the Rand and Orange Free State Undertaking as from April 1974 and in the Eastern Transvaal Undertaking as from July 1974. It was then implemented in the Cape Eastern, Border, Orange River, Cape Western and Natal Undertakings as from September 1976, and in the Cape Northern Undertaking as from July 1981.

**TABLE 10 - TARIFF B : DEMAND RATES NOTIFIED IN THE SCHEDULE OF STANDARD PRICES (BEFORE APPLICATION OF THE SURCHARGE/DISCOUNT)**

The notified demand rates were applied per completed ampere of maximum demand, except for the Rand and Orange Free State Undertaking, where the demand was measured in kilowatt.

The Licensee was entitled to charge not less than the minimum charge for the metering installation installed at the time for the consumer's supply, being :

	BU	ORU	CNU	CWU	ETU	NU
	CEU					
	R	R	R	R	R	R
less than 17 amp	0.60	1.00	0.90	1.04	0.75	0.45
from 17 to 24 amp	0.90	1.00	1.20	1.04	0.75	0.60
from 25 to 33 amp	1.20	1.50	1.80	1.56	0.75	0.90
from 34 to 49 amp	1.80	1.75	2.70	2.34	1.12	1.35
from 50 to 66 amp	2.40	3.00	3.60	3.12	1.50	1.80
from 67 to 99 amp	3.60	4.50	5.40	4.68	2.25	2.70
from 100 to 132 amp	4.80	6.00	7.20	6.24	3.00	3.60
from 133 to 198 amp	7.20	9.00	10.80	9.36	4.50	5.40
from 199 to 297 amp	10.80	13.50	16.20	14.04	6.75	8.10
over 297 ampere	14.40	18.00	21.60	18.72	9.00	10.80

Demand metering was initially installed for most small power users, until the number of small power users escalated, making the costs and logistics of installing and reading demand metering exorbitant. To address these problems the tariff was restructured so as not to include demand charges.

Changes were made to the tariff structure (excluding demand charges) at different times for different undertakings. From September 1976 only the Cape Northern Undertaking was still applying demand charges, and these were scrapped as from July 1981.

**TABLE 11 - TARIFF B : NOTIFIED ENERGY RATES IN c/kW.h TAKING INTO ACCOUNT THE QUARTERLY COAL COST ADJUSTMENT (NOT ADJUSTED 1973 TO 1975)**

The figures reflected for 1973 to 1975 inclusive are the energy charge rates as notified in the Schedule of Standard Prices, and have not been adjusted for the coal cost, as these figures are not available. The figures reflected from 1976 to 1985 are the energy rates notified in the Schedule of Standard Prices after application of the quarterly coal cost adjustment. These figures are the energy rates before application of the surcharge/discount.

Initially, the energy charge was applied to the total kW.h consumed. As from April 1974, the concept of a "high rate" and "low rate" energy charge was introduced in the Rand and Orange Free State Undertaking, whereby the first 500 units of the monthly consumption, or the monthly consumption, whichever was the lesser number, were charged at the high rate, and the balance of the consumption charged at the low rate.

This charging concept was gradually introduced in the other undertakings, and by July 1981 all undertakings were applying a high rate to the first 500 kW.h and a low rate to the balance of consumption.

**TABLE 12 - TARIFF B : EFFECTIVE BASIC CHARGE IN RANDS (AFTER APPLICATION OF THE SURCHARGE/DISCOUNT)**

This table reflects the figures from Table 9 after application of the surcharge or discount from Table 2.

**TABLE 13 - TARIFF B : EFFECTIVE DEMAND RATES (AFTER APPLICATION OF THE SURCHARGE/DISCOUNT)**

This table reflects the figures from Table 10 after application of the surcharge or discount from Table 2.

**TABLE 14 - TARIFF B : EFFECTIVE ENERGY RATES IN c/kW.h (AFTER APPLICATION OF THE SURCHARGE/DISCOUNT)**

This table reflects the figures from Table 11 after application of the surcharge or discount from Table 2.

**3.4 TARIFF C : LIGHTING AND DOMESTIC USERS**

Prior to 1974, the tariff for "lighting and domestic" customers had the same structure in all seven of Eskom's undertakings other than its Rand and OFS Undertaking. The structure afforded these customers the option of being charged either on a "flat rate tariff" or a "room rate tariff". In the Rand and OFS Undertaking, the "urban residential" Tariff C was a room rate tariff, with provision for a kW demand charge in the event of the premises being used for business purposes.

During 1974, these versions of Tariff C were done away with in the Rand and OFS and Eastern Transvaal Undertakings, and a revised Tariff C

Once again the tariff definition varied across the different Undertakings. Small Power User customers had the choice of Tariff B or Tariff C. In all Undertakings except the Rand and Orange Free State Undertaking, Tariff C consisted of two alternatives, the Flat Rate Tariff or the Room Rate Tariff. Tariff C was applied "... to private residences, in respect of which a "room" assessment has been or may be made ...".

In the Rand and Orange Free State Undertaking the Tariff was applied "In any urban area used predominantly for residential purposes ...".

By July 1981 Tariff C (Urban Domestic Users) was applied in all Undertakings "For a supply of electricity for domestic purposes for a private house or a block of flats, within a legally constituted township or within an area considered by the Licensee to be similar to a legally constituted township, ..."

The tariff structure in all undertakings except Rand and OFS Undertaking initially consisted of :

Alternative (a) : Flat Rate Tariff

plus            Basic Charge per month (R)  
times        Unit Charge (c/kW.h)  
              Percentage Surcharge or Discount

or

Alternative (b) : Room Rate Tariff

	Basic Charge per month (R)
plus	Charge per Room per month (R)
plus	Unit Charge (c/kW.h)
times	Percentage Surcharge or Discount

In the Rand and OFS Undertaking the tariff structure initially consisted of the room rate tariff as alternative (b) above, with the option of a kW demand charge when premises were being used for business purposes.

By September 1976 all but the Northern Cape Undertaking had changed the tariff structure to :

	Basic Charge per month (R)
plus	High Energy Charge (c/kW.h) for first 300 kW.h
plus	Energy Charge (c/kW.h) for balance of consumption
times	Percentage Surcharge or Discount

The Northern Cape Undertaking began using this tariff structure as from July 1981.

Notes to Tables :

**TABLE 15 - TARIFF C : BASIC CHARGE IN RANDS NOTIFIED IN THE SCHEDULE OF STANDARD PRICES (BEFORE APPLICATION OF THE SURCHARGE/DISCOUNT) Flat rate tariff (alternative (a)) initially in all undertakings except Rand and Orange Free State Undertaking**

A flat rate tariff (alternative (a)) was initially in force in all undertakings except Rand and Orange Free State Undertaking. This table shows the basic charges associated initially with the flat rate tariff and subsequently with the declining block rate tariff which replaced it (in different years in the different undertakings).

No basic charge was applied with the room rate in force in the Rand & Orange Free State Undertaking until April 1974.

**TABLE 16 - TARIFF C : NOTIFIED ENERGY RATES IN c/kW.h TAKING INTO ACCOUNT THE QUARTERLY COAL COST ADJUSTMENT (NOT ADJUSTED 1973 TO 1975)**

The high and low rates shown initially for Rand and Orange Free State Undertaking (5,00 and 0,675 c/kW.h) were applicable to the room rate tariff until it was replaced in April 1974 with a declining block rate tariff.

Once the concept of a two-part energy rate was introduced (in April and July 1974 in Rand and OFS and Eastern Transvaal, and in September 1976 in other undertakings), the high rate was applied to the first 300 kW.h of consumption, and the low rate to any balance of consumption, in excess of 300 kW.h.

**TABLE 17 - TARIFF C : EFFECTIVE BASIC CHARGE IN RANDS (AFTER APPLICATION OF THE SURCHARGE/DISCOUNT)**

This table reflects the basic charge from Table 15 after application of the surcharge or discount from Table 2.

**TABLE 18 - TARIFF C : EFFECTIVE ENERGY RATES IN c/kW.h (AFTER APPLICATION OF THE SURCHARGE/DISCOUNT)**

This table reflects the energy charge from Table 16 after application of the surcharge or discount from Table 2.

**TABLE 19 - TARIFF C : ROOM RATE TARIFF (ALTERNATIVE (b)) NOTIFIED IN THE SCHEDULE OF STANDARD PRICES TAKING INTO ACCOUNT THE QUARTERLY COAL COST ADJUSTMENT (BEFORE APPLICATION OF THE SURCHARGE/DISCOUNT, NOT ADJUSTED 1973 TO 1975)**

The service charge and room rate were charged per month, whether any electricity was taken or not.

The room rate was applied to a minimum of two rooms.

The Rand and Orange Free State did not apply a Room Rate Tariff.

**TABLE 20 - TARIFF C : EFFECTIVE ROOM RATE TARIFF (ALTERNATIVE (b)) (AFTER APPLICATION OF THE SURCHARGE/DISCOUNT)**

This table reflects the charges from Table 19 after application of the surcharge or discount from Table 2.

**3.5 TARIFF D : RURAL SMALL USERS**

During 1973 until April 1974 the Rand and Orange Free State Undertaking applied a Tariff D "in any rural area for any supply of electricity ...". This tariff consisted of :

	Basic Charge per month (R)
plus	High Energy Charge (c/kW.h) for first 1000 kW.h
plus	Energy Charge (c/kW.h) for balance of consumption
times	Percentage Surcharge or Discount

Between April 1974 and January 1982 these rural supplies were charged in terms of Tariff B or sometimes Tariff C as in the other Undertakings, with the additional costs being recovered by means of other (non-tariff) charges.

As from January 1982 a new Tariff D for Rural Small Users was introduced in all Undertakings, for "... a consumer whose maximum demand at no time exceeds 100 kV.A or kW, made available at a nominal voltage of 380 volts between phases and 220 volts between phase and neutral or as otherwise agreed and whose point of supply is situated within an area defined as "agricultural land" ... or ... within an area deemed by Eskom to be similar to such a defined area, ...".

The tariff structure was the same as that applied in the early 70's in Rand and Orange Free State Undertaking, except that the high energy charge was applied to the first 800 kW.h of consumption.

Notes to Tables :

**TABLE 21 - HISTORICAL TARIFF D : RAND AND ORANGE FREE STATE UNDERTAKING (1973, 1974) NOTIFIED AND EFFECTIVE CHARGES**

Only the Rand and Orange Free State Undertaking applied a Tariff D for 1973 until April 1974.

The Demand Charge consisted of two components viz. a charge of R 3.00 per month, payable whether any electricity was taken or not, and a rate of 10 cents for each completed ampere of the maximum demand taken by the consumer in the month in excess of 30 amperes.

The unit rates were not subject to adjustment to take account of the coal cost.

**TABLE 22 - TARIFF D : BASIC CHARGE IN RANDB NOTIFIED IN THE SCHEDULE OF STANDARD PRICES (BEFORE APPLICATION OF THE SURCHARGE/DISCOUNT) 1882-1985**

The basic charge was applied independent of supply voltage.

**TABLE 23 - TARIFF D : ENERGY RATES IN c/kW.h NOTIFIED IN THE SCHEDULE OF STANDARD PRICES TAKING INTO THE QUARTERLY COAL COST ADJUSTMENT (BEFORE APPLICATION OF THE SURCHARGE/DISCOUNT) 1982-1985**

When Tariff D was introduced in January 1982, the high energy rate was applied to the first 800 kW.h of consumption, and the low energy rate was applied to the balance of the consumption.

**TABLE 24 - TARIFF D : EFFECTIVE BASIC CHARGE IN RANDB (AFTER APPLICATION OF THE SURCHARGE/DISCOUNT) 1982-1985**

This table reflects the figures from Table 22 after application of the surcharge or discount from Table 2.

**TABLE 25 - TARIFF D : EFFECTIVE ENERGY RATES IN c/kW.h (AFTER APPLICATION OF THE SURCHARGE/DISCOUNT) 1982-1985**

This table reflects the figures from Table 23 after application of the surcharge or discount from Table 2.







TABLE 4 - TARIFF A : DEMAND RATES NOTIFIED IN THE SCHEDULE OF STANDARD PRICES (BEFORE APPLICATION OF THE SURCHARGE/DISCOUNT)									
UNDERTAKING		CAPE	BORDER	ORANGE	CAPE	CAPE	NATAL	EASTERN	RAND & OFS
DATE		EASTERN		RIVER	WESTERN	NORTHERN		TVL	
		R/kv.A	R/kv.A	R/kv.A	R/kv.A	R/kv.A	R/kv.A	R/kv.A	R/kw OR R/kvA.
Jan 1973		2.05	2.05	2.10	1.63/1.75	2.30	1.61/1.75/1.79/1.89	1.00	4.60
April 1973		2.05	2.05	2.10	1.63/1.75	2.30	1.61/1.75/1.79/1.89	1.00	4.60
July 1973		2.05	2.05	2.10	1.63/1.75	2.30	1.61/1.75/1.79/1.89	1.00	4.60
Oct 1973		2.05	2.05	2.10	1.63/1.75	2.30	1.61/1.75/1.79/1.89	2.20/2.30	4.60
Jan 1974		2.05	2.05	2.10	1.63/1.75	2.30	1.61/1.75/1.79/1.89	2.20/2.30	4.60
April 1974		2.05	2.05	2.10	1.63/1.75	2.30	1.61/1.75/1.79/1.89	2.20/2.30	2.50
July 1974		2.05	2.05	2.10	1.63/1.75	2.30	1.61/1.75/1.79/1.89	2.20/2.30	2.50
Oct 1974		2.05	2.05	2.10	1.63/1.75	2.30	1.61/1.75/1.79/1.89	2.20/2.30	2.50
Jan 1975		2.05	2.05	2.10	1.63/1.75	2.30	1.61/1.75/1.79/1.89	2.20/2.30	2.50
April 1975		2.05	2.05	2.10	1.63/1.75	2.30	1.61/1.75/1.79/1.89	2.20/2.30	2.50
July 1975		2.05	2.05	2.10	1.63/1.75	2.30	1.61/1.75/1.79/1.89	2.20/2.30	2.50
Oct 1975		2.05	2.05	2.10	1.63/1.75	2.30	1.61/1.75/1.79/1.89	2.20/2.30	2.50
Jan 1976		2.05	2.05	2.10	1.63/1.75	2.30	1.61/1.75/1.79/1.89	2.20/2.30	2.50
April 1976		2.05	2.05	2.10	1.63/1.75	2.30	1.61/1.75/1.79/1.89	2.20/2.30	2.50
July 1976		2.05	2.05	2.10	1.63/1.75	2.30	1.61/1.75/1.79/1.89	2.20/2.30	2.50
Sept 1976	4.40/4.65		8.80/9.05	4.40/4.65	5.60/5.80	2.30	5.25/5.50/5.65	2.20/2.30	2.50
Oct 1976	4.40/4.65		8.80/9.05	4.40/4.65	5.60/5.80	2.30	5.25/5.50/5.65	2.20/2.30	2.50
Jan 1977	4.40/4.65		8.80/9.05	4.40/4.65	5.60/5.80	2.30	5.25/5.50/5.65	2.20/2.30	2.50
April 1977	4.40/4.65		8.80/9.05	4.40/4.65	5.60/5.80	2.30	5.25/5.50/5.65	2.20/2.30	2.50
July 1977	4.40/4.65		8.80/9.05	4.40/4.65	5.60/5.80	2.30	5.25/5.50/5.65	2.20/2.30	2.50
Oct 1977	4.40/4.65		8.80/9.05	4.40/4.65	5.60/5.80	2.30	5.25/5.50/5.65	2.20/2.30	2.50
Jan 1978	4.40/4.65		8.80/9.05	4.40/4.65	5.60/5.80	2.30	5.25/5.50/5.65	2.20/2.30	2.50
April 1978	4.40/4.65		8.80/9.05	4.40/4.65	5.60/5.80	2.30	5.25/5.50/5.65	2.20/2.30	2.50
July 1978	4.40/4.65		8.80/9.05	4.40/4.65	5.60/5.80	2.30	5.25/5.50/5.65	2.20/2.30	2.50
Oct 1978	4.40/4.65		8.80/9.05	4.40/4.65	5.60/5.80	2.30	5.25/5.50/5.65	2.20/2.30	2.50
Jan 1979	4.40/4.65		8.80/9.05	4.40/4.65	5.60/5.80	2.30	5.25/5.50/5.65	2.20/2.30	2.50
April 1979	4.40/4.65		8.80/9.05	4.40/4.65	5.60/5.80	2.30	5.25/5.50/5.65	2.20/2.30	2.50
July 1979	4.40/4.65		8.80/9.05	4.40/4.65	5.60/5.80	2.30	5.25/5.50/5.65	2.20/2.30	2.50
Oct 1979	4.40/4.65		8.80/9.05	4.40/4.65	5.60/5.80	2.30	5.25/5.50/5.65	2.20/2.30	2.50
Jan 1980	4.40/4.65		8.80/9.05	4.40/4.65	5.60/5.80	2.30	5.25/5.50/5.65	2.20/2.30	2.50
April 1980	4.40/4.65		8.80/9.05	4.40/4.65	5.60/5.80	2.30	5.25/5.50/5.65	2.20/2.30	2.50
July 1980	4.40/4.65		8.80/9.05	4.40/4.65	5.60/5.80	2.30	5.25/5.50/5.65	5.75/5.90	7.00
Oct 1980	4.40/4.65		8.80/9.05	4.40/4.65	5.60/5.80	2.30	5.25/5.50/5.65	5.75/5.90	7.00
Jan 1981	----- >		8.80/9.05	4.40/4.65	5.60/5.80	2.30	5.25/5.50/5.65	5.75/5.90	7.00
April 1981			8.80/9.05	4.40/4.65	5.60/5.80	2.30	5.25/5.50/5.65	5.75/5.90	7.00
July 1981			8.80/9.05	4.40/4.65	5.60/5.80	9.75/10.00	5.25/5.50/5.65	5.75/5.90	7.00
Oct 1981			8.80/9.05	4.40/4.65	5.60/5.80	9.75/10.00	5.25/5.50/5.65	5.75/5.90	7.00
Jan 1982			12.35/12.60	12.00/12.25	9.90/10.15	9.75/10.00	5.25/5.50/5.65	5.75/5.90	7.00
April 1982			12.35/12.60	12.00/12.25	9.90/10.15	9.75/10.00	5.25/5.50/5.65	5.75/5.90	7.00
July 1982			12.35/12.60	12.00/12.25	9.90/10.15	9.75/10.00	5.25/5.50/5.65	5.75/5.90	7.00
Oct 1982			12.35/12.60	12.00/12.25	9.90/10.15	9.75/10.00	5.25/5.50/5.65	5.75/5.90	7.00
Jan 1983			12.35/12.60	12.00/12.25	9.90/10.15	9.75/10.00	10.40/10.70/10.95	5.75/5.90	7.00
April 1983			12.35/12.60	12.00/12.25	9.90/10.15	9.75/10.00	10.40/10.70/10.95	5.75/5.90	7.00
July 1983			12.35/12.60	12.00/12.25	9.90/10.15	9.75/10.00	10.40/10.70/10.95	5.75/5.90	7.00
Oct 1983			12.35/12.60	12.00/12.25	9.90/10.15	9.75/10.00	10.40/10.70/10.95	5.75/5.90	7.00
Jan 1984			12.35/12.60	12.00/12.25	9.90/10.15	9.75/10.00	10.40/10.70/10.95	10.55/10.95	10.55/10.95/11.30/11.70
April 1984			12.35/12.60	12.00/12.25	9.90/10.15	9.75/10.00	10.40/10.70/10.95	10.55/10.95	10.55/10.95/11.30/11.70
July 1984			12.35/12.60	12.00/12.25	9.90/10.15	9.75/10.00	10.40/10.70/10.95	10.55/10.95	10.55/10.95/11.30/11.70
Oct 1984			12.35/12.60	12.00/12.25	9.90/10.15	9.75/10.00	10.40/10.70/10.95	10.55/10.95	10.55/10.95/11.30/11.70
				AMALGAMATION		AMALGAMATION			
				EASTERN CAPE		NORTHERN & WESTERN CAPE			
				UNDERTAKING		UNDERTAKING			
Jan 1985				15.15/15.45		12.60/13.00	10.40/10.70/10.95	10.55/10.95	10.55/10.95/11.30/11.70
April 1985				15.15/15.55		12.60/13.00	10.40/10.70/10.95	10.55/10.95	10.55/10.95/11.30/11.70
July 1985				15.15/15.55		12.60/13.00	10.40/10.70/10.95	10.55/10.95	10.55/10.95/11.30/11.70
Sept 1985				15.15/15.55		12.60/13.00	10.40/10.70/10.95	10.55/10.95	10.55/10.95/11.30/11.70
Oct 1985				15.15/15.55		12.60/13.00	10.40/10.70/10.95	10.55/10.95	10.55/10.95/11.30/11.70

TABLE 5 - TARIFF A : ENERGY RATES NOTIFIED IN THE SCHEDULE OF STANDARD PRICES IN c/kW.h TAKING INTO ACCOUNT THE QUARTELY COAL ADJUSTMENT (NOT ADJUSTED 1973 TO 1975)

UNDERTAKING	CAPE EASTERN	BORDER	ORANGE RIVER	CAPE WESTERN	CAPE NORTHERN	NATAL	EASTERN TVL	RAND & OFS
DATE	COAL COST (c/ton)							
Jan 1973	N/A	0.445	0.385	0.225	0.460	0.275	0.270	0.198 0.245
April 1973	N/A	0.445	0.385	0.225	0.460	0.275	0.270	0.198 0.245
July 1973	N/A	0.445	0.385	0.225	0.460	0.275	0.270	0.198 0.245
Oct 1973	N/A	0.445	0.385	0.225	0.460	0.275	0.270	0.198 0.245
Jan 1974	N/A	0.445	0.570	0.225	0.460	0.275	0.270	0.198 0.245
April 1974	N/A	0.445	0.570	0.225	0.460	0.275	0.270	0.198 0.225
July 1974	N/A	0.445	0.570	0.225	0.460	0.275	0.270	0.180 0.225
Oct 1974	N/A	0.445	0.570	0.225	0.460	0.275	0.270	0.180 0.225
Jan 1975	N/A	0.445	0.570	0.225	0.460	0.275	0.270	0.180 0.225
April 1975	N/A	0.445	0.570	0.225	0.460	0.275	0.270	0.180 0.225
July 1975	N/A	0.445	0.570	0.225	0.460	0.275	0.270	0.180 0.225
Oct 1975	N/A	0.445	0.570	0.225	0.460	0.275	0.270	0.180 0.225
Jan 1976	N/A	0.700	0.710	0.347	0.570	0.397	0.385	0.302 0.378
April 1976	N/A	0.700	0.740	0.379	0.605	0.429	0.400	0.334 0.418
July 1976	N/A	0.700	0.750	0.379	0.605	0.429	0.395	0.334 0.418
Sept 1976	N/A	0.640	0.710	0.640	0.710	0.429	0.640	0.334 0.418
Oct 1976	N/A	0.668	0.738	0.668	0.738	0.457	0.668	0.362 0.453
Jan 1977	N/A	0.674	0.744	0.674	0.744	0.463	0.674	0.368 0.460
April 1977	N/A	0.684	0.754	0.684	0.754	0.475	0.684	0.380 0.475
July 1977	N/A	0.696	0.766	0.696	0.766	0.487	0.696	0.392 0.490
Oct 1977	N/A	0.704	0.774	0.704	0.774	0.495	0.704	0.400 0.500
Jan 1978	N/A	0.708	0.778	0.708	0.778	0.499	0.708	0.404 0.505
April 1978	N/A	0.728	0.798	0.728	0.798	0.519	0.728	0.424 0.530
July 1978	N/A	0.716	0.786	0.716	0.786	0.507	0.716	0.412 0.515
Oct 1978	N/A	0.728	0.798	0.728	0.798	0.519	0.728	0.424 0.530
Jan 1979	608	0.730	0.800	0.730	0.800	0.521	0.730	0.426 0.533
April 1979	629	0.742	0.812	0.742	0.812	0.533	0.742	0.438 0.548
July 1979	639	0.748	0.818	0.748	0.818	0.539	0.748	0.444 0.555
Oct 1979	661	0.760	0.830	0.760	0.830	0.551	0.760	0.456 0.570
Jan 1980	677	0.770	0.840	0.770	0.840	0.561	0.770	0.466 0.583
April 1980	681	0.772	0.842	0.772	0.842	0.563	0.772	0.468 0.585
July 1980	727	0.798	0.868	0.798	0.868	0.589	0.798	0.906 1.002
Oct 1980	749	0.812	0.882	0.812	0.882	0.603	0.812	0.919 1.017
Jan 1981	787	----->	0.904	0.834	0.904	0.623	0.834	0.942 1.041
April 1981	815		0.920	0.850	0.920	0.639	0.850	0.959 1.059
July 1981	847		0.938	0.868	0.938	1.335	0.868	0.977 1.079
Oct 1981	894		0.964	0.894	0.964	1.369	0.894	1.005 1.109
Jan 1982	1056		1.758	1.707	1.477	1.438	0.946	1.059 1.172
April 1982	1190		1.848	1.795	1.565	1.528	1.010	1.129 1.249
July 1982	1175		1.832	1.779	1.549	1.512	0.997	1.115 1.234
Oct 1982	1170		1.827	1.775	1.545	1.507	0.994	1.112 1.231
Jan 1983	1150		1.806	1.750	1.524	1.484	1.455	1.091 1.209
April 1983	1130		1.796	1.741	1.514	1.474	1.442	1.084 1.201
July 1983	1280		1.884	1.823	1.600	1.561	1.541	1.147 1.271
Oct 1983	1280		1.884	1.823	1.600	1.561	1.541	1.147 1.271
Jan 1984	1293		1.881	1.820	1.596	1.558	1.554	2.007 2.077
April 1984	1249		1.858	1.799	1.573	1.535	1.526	2.045 2.045
July 1984	1244		1.854	1.795	1.570	1.531	1.523	2.042 2.042
Oct 1984	1250		1.858	1.799	1.573	1.535	1.528	2.045 2.045
Jan 1985	1301			AMALGAMATION EASTERN CAPE UNDERTAKING	3.060	AMALGAMATION NORTHERN & WESTERN CAPE UNDERTAKING	2.547	1.564 2.113 2.117
April 1985	1273			3.040		2.528	1.548	2.095 2.099
July 1985	1341			3.088		2.574	1.588	2.138 2.142
Sept 1985	1341			3.088		2.574	1.588	2.138 2.142
Oct 1985	1307			3.097		2.583	1.573	2.147 2.150

TABLE 6 - TARIFF A : EFFECTIVE BASIC CHARGE IN RANDS (AFTER APPLICATION OF THE SURCHARGE/DISCOUNT)										
DATE	CAPE EASTERN	BORDER	ORANGE RIVER	CAPE WESTERN	CAPE NORTHERN	NATAL	EASTERN TVL	RAND & OFS	R&OFS EXT	
Jan 1973	7.48	7.14	10.50	7.26	6.21	6.93	6.30	12.00	13.80	
April 1973	7.99	7.99	11.25	7.76	6.75	7.43	6.75	12.00	13.80	
July 1973	7.99	7.99	11.25	7.76	6.75	7.43	6.75	12.00	13.80	
Oct 1973	7.99	7.99	11.25	7.76	6.75	7.43	6.75	12.00	13.80	
Jan 1974	7.99	7.99	11.25	7.76	6.75	7.43	6.75	12.00	13.80	
April 1974	8.16	7.99	12.00	7.76	6.75	7.59	7.20	17.40	20.00	
July 1974	8.16	7.99	12.00	7.76	6.75	7.59	12.75	17.40	20.00	
Oct 1974	8.16	7.99	12.00	7.76	6.75	7.59	12.75	17.40	20.00	
Jan 1975	8.16	7.99	12.00	7.76	6.75	7.59	12.75	17.40	20.00	
April 1975	9.52	8.84	14.00	8.09	7.85	8.25	13.88	20.40	23.50	
July 1975	9.52	8.84	14.00	8.09	7.85	8.25	13.88	20.40	23.50	
Oct 1975	9.52	8.84	14.00	8.09	7.85	8.25	13.88	20.40	23.50	
Jan 1976	9.52	8.84	14.00	8.09	7.85	8.25	13.88	20.40	23.50	
April 1976	10.88	10.20	16.00	9.24	8.94	9.41	15.75	23.50	27.00	
July 1976	10.88	10.20	16.00	9.24	8.94	9.41	15.75	23.50	27.00	
Sept 1976	19.50	15.00	15.00	15.00	10.22	15.00	18.00	26.50	30.50	
Oct 1976	19.50	15.00	15.00	15.00	10.22	15.00	18.00	26.50	30.50	
Jan 1977	24.50	19.00	19.00	19.00	12.78	19.00	22.13	33.00	38.00	
April 1977	24.50	19.00	19.00	19.00	12.78	19.00	22.13	33.00	38.00	
July 1977	24.50	19.00	19.00	19.00	12.78	19.00	22.13	33.00	38.00	
Oct 1977	24.50	19.00	19.00	19.00	12.78	19.00	22.13	33.00	38.00	
Jan 1978	28.00	19.00	24.00	20.00	15.51	19.00	26.63	39.50	45.40	
April 1978	28.00	19.00	24.00	20.00	15.51	19.00	26.63	39.50	45.40	
July 1978	28.00	19.00	26.00	20.00	15.51	19.00	26.63	39.50	45.40	
Oct 1978	28.00	19.00	26.00	20.00	15.51	19.00	26.63	39.50	45.40	
Jan 1979	29.00	20.00	27.50	21.00	15.51	19.00	28.13	41.60	47.80	
April 1979	29.00	20.00	27.50	21.00	15.51	19.00	28.13	41.60	47.80	
July 1979	29.00	20.00	27.50	21.00	15.51	19.00	28.13	41.60	47.80	
Oct 1979	29.00	20.00	27.50	21.00	15.51	19.00	28.13	41.60	47.80	
Jan 1980	29.00	20.00	29.00	21.00	15.51	19.00	28.13	41.60	47.80	
April 1980	29.00	20.00	29.00	21.00	15.51	19.00	28.13	41.60	47.80	
July 1980	31.00	21.50	31.00	22.50	16.43	20.00	22.50	18.40	←-----	
Oct 1980	31.00	21.50	31.00	22.50	16.43	20.00	22.50	18.40		
Jan 1981	----->	22.50	33.00	24.00	17.16	21.00	23.75	19.40		
April 1981		22.50	33.00	24.00	17.16	21.00	23.75	19.40		
July 1981		22.50	33.00	24.00	18.75	21.00	23.75	19.40		
Oct 1981		22.50	33.00	24.00	18.75	21.00	23.75	19.40		
Jan 1982		21.00	21.50	21.50	21.00	24.00	27.25	21.80		
April 1982		21.00	21.50	21.50	21.00	24.00	27.25	21.80		
July 1982		22.25	22.75	22.75	22.25	25.80	29.25	23.20		
Oct 1982		22.25	22.75	22.75	22.25	25.80	29.25	23.20		
Jan 1983		24.25	26.00	25.00	24.75	30.28	34.00	26.70		
April 1983		24.25	26.00	25.00	24.75	30.28	34.00	26.70		
July 1983		24.25	26.00	25.00	24.75	30.28	34.00	26.70		
Oct 1983		24.25	26.00	25.00	24.75	30.28	34.00	26.70		
Jan 1984		25.63	27.50	26.50	26.25	32.03	35.78	35.78		
April 1984		25.63	27.50	26.50	26.25	32.03	35.78	35.78		
July 1984		25.63	27.50	26.50	26.25	32.03	35.78	35.78		
Oct 1984		25.63	27.50	26.50	26.25	32.03	35.78	35.78		
			AMALGAMATION EASTERN CAPE UNDERTAKING		AMALGAMATION NORTHERN & WESTERN CAPE UNDERTAKING					
Jan 1985			35.55		37.35	35.35	39.15	39.60		
April 1985			35.55		37.35	35.35	39.15	39.60		
July 1985			35.55		37.35	35.35	39.15	39.60		
Sept 1985			39.11		41.09	38.89	43.07	43.56		
Oct 1985			39.11		41.09	38.89	43.07	43.56		

TABLE 7 - TARIFF A : EFFECTIVE DEMAND RATES (AFTER APPLICATION OF THE SURCHARGE/DISCOUNT)																		
(SEE NOTES ON VOLTAGES)																		
UNDERTAKING	CAPE EASTERN	BORDER	ORANGE RIVER	CAPE WESTERN	CAPE NORTHERN	NATAL			EASTERN TVL		RAND & OFS		R&OFS EXT					
DATE	R/kV.A		R/kV.A	R/kV.A	R/kV.A	R/kV.A	R/kV.A	R/kV.A	R/kV.A	R/kV.A	R/kV.A	R/kW OR R/kVA.	R/kW					
Jan 1973	2.26		2.21	1.79	1.93	1.96	1.69	1.84	1.88	1.98	1.05	5.52	6.35					
April 1973	2.41	2.15	2.36	1.92	2.06	2.13	1.81	1.97	2.01	2.13	1.13	5.52	6.35					
July 1973	2.41	2.41	2.36	1.92	2.06	2.13	1.81	1.97	2.01	2.13	1.13	5.52	6.35					
Oct 1973	2.41	2.41	2.36	1.92	2.06	2.13	1.81	1.97	2.01	2.13	2.48	2.59	6.35					
Jan 1974	2.41	2.41	2.36	1.92	2.06	2.13	1.81	1.97	2.01	2.13	2.48	2.59	6.35					
April 1974	2.46	2.41	2.52	1.92	2.06	2.13	1.85	2.01	2.06	2.17	2.64	2.76	2.18					
July 1974	2.46	2.41	2.52	1.92	2.06	2.13	1.85	2.01	2.06	2.17	1.87	1.96	2.18					
Oct 1974	2.46	2.41	2.52	1.92	2.06	2.13	1.85	2.01	2.06	2.17	1.87	1.96	2.18					
Jan 1975	2.46	2.41	2.52	1.92	2.06	2.13	1.85	2.01	2.06	2.17	1.87	1.96	2.18					
April 1975	2.87	2.67	2.94	2.00	2.14	2.47	2.01	2.19	2.24	2.36	2.04	2.13	2.55					
July 1975	2.87	2.67	2.94	2.00	2.14	2.47	2.01	2.19	2.24	2.36	2.04	2.13	2.55					
Oct 1975	2.87	2.67	2.94	2.00	2.14	2.47	2.01	2.19	2.24	2.36	2.04	2.13	2.55					
Jan 1976	2.87	2.67	2.94	2.00	2.14	2.47	2.01	2.19	2.24	2.36	2.04	2.13	2.55					
April 1976	3.28	3.08	3.36	2.28	2.45	2.82	2.29	2.49	2.55	2.69	2.31	2.42	2.94					
July 1976	3.28	3.08	3.36	2.28	2.45	2.82	2.29	2.49	2.55	2.69	2.31	2.42	2.94					
Sept 1976	4.29	4.53	6.60	6.79	3.30	3.49	4.20	4.35	3.22	3.94	4.13	4.24	3.81					
Oct 1976	4.29	4.53	6.60	6.79	3.30	3.49	4.20	4.35	3.22	3.94	4.13	4.24	3.81					
Jan 1977	5.39	5.70	8.36	8.60	4.18	4.42	5.32	5.51	4.03	4.99	5.23	5.37	4.75					
April 1977	5.39	5.70	8.36	8.60	4.18	4.42	5.32	5.51	4.03	4.99	5.23	5.37	4.75					
July 1977	5.39	5.70	8.36	8.60	4.18	4.42	5.32	5.51	4.03	4.99	5.23	5.37	4.75					
Oct 1977	5.39	5.70	8.36	8.60	4.18	4.42	5.32	5.51	4.03	4.99	5.23	5.37	4.75					
Jan 1978	6.16	6.51	8.36	8.60	5.28	5.58	5.60	5.80	4.89	4.99	5.23	5.37	5.68					
April 1978	6.16	6.51	8.36	8.60	5.28	5.58	5.60	5.80	4.89	4.99	5.23	5.37	5.68					
July 1978	6.16	6.51	8.36	8.60	5.72	6.05	5.60	5.80	4.89	4.99	5.23	5.37	5.68					
Oct 1978	6.16	6.51	8.36	8.60	5.72	6.05	5.60	5.80	4.89	4.99	5.23	5.37	5.68					
Jan 1979	6.38	6.74	8.80	9.05	6.05	6.39	5.88	6.09	4.89	4.99	5.23	5.37	5.98					
April 1979	6.38	6.74	8.80	9.05	6.05	6.39	5.88	6.09	4.89	4.99	5.23	5.37	5.98					
July 1979	6.38	6.74	8.80	9.05	6.05	6.39	5.88	6.09	4.89	4.99	5.23	5.37	5.98					
Oct 1979	6.38	6.74	8.80	9.05	6.05	6.39	5.88	6.09	4.89	4.99	5.23	5.37	5.98					
Jan 1980	6.38	6.74	8.80	9.05	6.38	6.74	5.88	6.09	4.89	4.99	5.23	5.37	5.98					
April 1980	6.38	6.74	8.80	9.05	6.38	6.74	5.88	6.09	4.89	4.99	5.23	5.37	5.98					
July 1980	6.82	7.21	9.46	9.73	6.82	7.21	6.30	6.53	5.18	5.25	5.50	5.65	6.44					
Oct 1980	6.82	7.21	9.46	9.73	6.82	7.21	6.30	6.53	5.18	5.25	5.50	5.65	6.44					
Jan 1981	-----	-----	9.90	10.18	7.26	7.67	6.72	6.96	5.41	5.51	5.78	5.93	6.79					
April 1981			9.90	10.18	7.26	7.67	6.72	6.96	5.41	5.51	5.78	5.93	6.79					
July 1981			9.90	10.18	7.26	7.67	6.72	6.96	7.31	7.50	5.51	5.78	5.93					
Oct 1981			9.90	10.18	7.26	7.67	6.72	6.96	7.31	7.50	5.51	5.78	5.93					
Jan 1982			10.37	10.58	10.32	10.54	8.51	8.73	8.19	8.40	6.30	6.60	6.78					
April 1982			10.37	10.58	10.32	10.54	8.51	8.73	8.19	8.40	6.30	6.60	6.78					
July 1982			10.99	11.21	10.92	11.15	9.01	9.24	8.68	8.90	6.77	7.10	7.29					
Oct 1982			10.99	11.21	10.92	11.15	9.01	9.24	8.68	8.90	6.77	7.10	7.29					
Jan 1983			11.98	12.22	12.48	12.74	9.90	10.15	9.65	9.90	9.00	9.26	9.47					
April 1983			11.98	12.22	12.48	12.74	9.90	10.15	9.65	9.90	9.00	9.26	9.47					
July 1983			11.98	12.22	12.48	12.74	9.90	10.15	9.65	9.90	9.00	9.26	9.47					
Oct 1983			11.98	12.22	12.48	12.74	9.90	10.15	9.65	9.90	9.00	9.26	9.47					
Jan 1984			12.66	12.92	13.20	13.48	10.49	10.76	10.24	10.50	9.52	9.79	10.02					
April 1984			12.66	12.92	13.20	13.48	10.49	10.76	10.24	10.50	9.52	9.79	10.02					
July 1984			12.66	12.92	13.20	13.48	10.49	10.76	10.24	10.50	9.52	9.79	10.02					
Oct 1984			12.66	12.92	13.20	13.48	10.49	10.76	10.24	10.50	9.52	9.79	10.02					
Jan 1985				AMALGAMATION EASTERN CAPE UNDERTAKING			AMALGAMATION NORTHERN & WESTERN CAPE UNDERTAKING											
April 1985				11.97	12.21		10.46	10.79		10.50	10.81	11.06	9.18	9.53	9.28	9.64	9.94	10.30
July 1985				11.97	12.21		10.46	10.79		10.50	10.81	11.06	9.18	9.53	9.28	9.64	9.94	10.30
Sept 1985				13.17	13.43		11.50	11.87		11.55	11.89	12.17	10.10	10.48	10.21	10.60	10.94	11.33
Oct 1985				13.17	13.43		11.50	11.87		11.55	11.89	12.17	10.10	10.48	10.21	10.60	10.94	11.33

TABLE 8 - TARIFF A : EFFECTIVE ENERGY RATES IN c/kw.h (AFTER APPLICATION OF THE SURCHARGE/DISCOUNT)										
UNDERTAKING	CAPE EASTERN	BORDER	ORANGE RIVER	CAPE WESTERN	CAPE NORTHERN	NATAL	EASTERN TVL	RAND & OFS	R&OFS EXT	
DATE										
Jan 1973	0.490	0.404	0.236	0.506	0.234	0.284	0.207	0.294	0.338	
April 1973	0.523	0.452	0.253	0.541	0.254	0.304	0.222	0.294	0.338	
July 1973	0.523	0.452	0.253	0.541	0.254	0.304	0.222	0.294	0.338	
Oct 1973	0.523	0.452	0.253	0.541	0.254	0.304	0.222	0.294	0.338	
Jan 1974	0.523	0.670	0.253	0.541	0.254	0.304	0.222	0.294	0.338	
April 1974	0.534	0.670	0.270	0.541	0.254	0.311	0.237	0.196	0.225	
July 1974	0.534	0.670	0.270	0.541	0.254	0.311	0.153	0.196	0.225	
Oct 1974	0.534	0.670	0.270	0.541	0.254	0.311	0.153	0.196	0.225	
Jan 1975	0.534	0.670	0.270	0.541	0.254	0.311	0.153	0.196	0.225	
April 1975	0.623	0.741	0.315	0.564	0.296	0.338	0.167	0.230	0.264	
July 1975	0.623	0.741	0.315	0.564	0.296	0.338	0.167	0.230	0.264	
Oct 1975	0.623	0.741	0.315	0.564	0.296	0.338	0.167	0.230	0.264	
Jan 1976	0.980	0.923	0.486	0.698	0.427	0.481	0.279	0.385	0.444	
April 1976	1.120	1.110	0.606	0.847	0.526	0.570	0.351	0.491	0.564	
July 1976	1.120	1.125	0.606	0.847	0.526	0.563	0.351	0.491	0.564	
Sept 1976	0.624	0.533	0.480	0.533	0.601	0.480	0.401	0.553	0.637	
Oct 1976	0.651	0.554	0.501	0.554	0.640	0.501	0.434	0.600	0.690	
Jan 1977	0.826	0.707	0.640	0.707	0.810	0.640	0.543	0.759	0.874	
April 1977	0.838	0.716	0.650	0.716	0.831	0.650	0.561	0.784	0.903	
July 1977	0.853	0.728	0.661	0.728	0.852	0.661	0.578	0.809	0.931	
Oct 1977	0.862	0.735	0.669	0.735	0.866	0.669	0.590	0.825	0.950	
Jan 1978	0.991	0.739	0.850	0.778	1.060	0.673	0.717	0.997	1.146	
April 1978	1.019	0.758	0.874	0.798	1.103	0.692	0.753	1.047	1.203	
July 1978	1.002	0.747	0.931	0.786	1.077	0.680	0.731	1.017	1.169	
Oct 1978	1.019	0.758	0.946	0.798	1.103	0.692	0.753	1.047	1.203	
Jan 1979	1.059	0.800	1.004	0.840	1.107	0.694	0.799	1.108	1.273	
April 1979	1.076	0.812	1.020	0.853	1.133	0.705	0.821	1.139	1.309	
July 1979	1.085	0.818	1.029	0.859	1.145	0.711	0.833	1.154	1.326	
Oct 1979	1.102	0.830	1.045	0.872	1.171	0.722	0.855	1.186	1.362	
Jan 1980	1.117	0.840	1.117	0.882	1.192	0.732	0.874	1.212	1.392	
April 1980	1.119	0.842	1.119	0.884	1.196	0.733	0.878	1.217	1.398	
July 1980	1.237	0.933	1.237	0.977	1.325	0.798	0.815	0.922	-----	
Oct 1980	1.259	0.948	1.259	0.992	1.357	0.812	0.827	0.935		
Jan 1981	----->	1.017	1.376	1.085	1.464	0.876	0.894	1.010		
April 1981		1.035	1.403	1.104	1.502	0.893	0.911	1.027		
July 1981		1.055	1.432	1.126	1.001	0.911	0.928	1.047		
Oct 1981		1.085	1.475	1.157	1.027	0.939	0.954	1.076		
Jan 1982		1.477	1.468	1.270	1.208	1.135	1.154	1.277		
April 1982		1.552	1.544	1.346	1.284	1.212	1.231	1.361		
July 1982		1.630	1.619	1.410	1.346	1.286	1.305	1.431		
Oct 1982		1.626	1.615	1.406	1.341	1.282	1.301	1.428		
Jan 1983		1.752	1.820	1.524	1.469	1.259	1.484	1.614		
April 1983		1.742	1.811	1.514	1.459	1.247	1.474	1.603		
July 1983		1.827	1.896	1.600	1.545	1.333	1.560	1.697		
Oct 1983		1.827	1.896	1.600	1.545	1.333	1.560	1.697		
Jan 1984		1.928	2.002	1.692	1.636	1.422	1.596	1.651		
April 1984		1.904	1.979	1.667	1.612	1.396	1.626	1.626		
July 1984		1.900	1.975	1.664	1.608	1.394	1.623	1.623		
Oct 1984		1.904	1.979	1.667	1.612	1.398	1.626	1.626		
				AMALGAMATION EASTERN CAPE UNDERTAKING	AMALGAMATION NORTHERN & WESTERN CAPE UNDERTAKING					
Jan 1985				2.417	2.114	1.580	1.838	1.863		
April 1985				2.402	2.098	1.563	1.823	1.847		
July 1985				2.440	2.136	1.604	1.860	1.885		
Sept 1985				2.683	2.350	1.764	2.046	2.073		
Oct 1985				2.691	2.358	1.748	2.055	2.081		

TABLE 9 - TARIFF B : BASIC CHARGE IN RANDS NOTIFIED IN THE SCHEDULE OF STANDARD PRICES  
(BEFORE APPLICATION OF THE SURCHARGE/DISCOUNT)

DATE	ERTAKING	CAPE EASTERN	BORDER	ORANGE RIVER	CAPE WESTERN	CAPE NORTHERN	NATAL	EASTERN TVL	RAND & OFS
Jan 1973		1.00	1.00	2.00	0.82	1.25	0.85	1.00	0.00
April 1973		1.00	1.00	2.00	0.82	1.25	0.85	1.00	0.00
July 1973		1.00	1.00	2.00	0.82	1.25	0.85	1.00	0.00
Oct 1973		1.00	1.00	2.00	0.82	1.25	0.85	1.00	0.00
Jan 1974		1.00	1.00	2.00	0.82	1.25	0.85	1.00	0.00
April 1974		1.00	1.00	2.00	0.82	1.25	0.85	1.00	3.00 6.00
July 1974		1.00	1.00	2.00	0.82	1.25	0.85	6.00	3.00 6.00
Oct 1974		1.00	1.00	2.00	0.82	1.25	0.85	6.00	3.00 6.00
Jan 1975		1.00	1.00	2.00	0.82	1.25	0.85	6.00	3.00 6.00
April 1975		1.00	1.00	2.00	0.82	1.25	0.85	6.00	3.00 6.00
July 1975		1.00	1.00	2.00	0.82	1.25	0.85	6.00	3.00 6.00
Oct 1975		1.00	1.00	2.00	0.82	1.25	0.85	6.00	3.00 6.00
Jan 1976		1.00	1.00	2.00	0.82	1.25	0.85	6.00	3.00 6.00
April 1976		1.00	1.00	2.00	0.82	1.25	0.85	6.00	3.00 6.00
July 1976		1.00	1.00	2.00	0.82	1.25	0.85	6.00	3.00 6.00
Sept 1976		1.00	1.00	2.00	0.82	1.25	0.85	6.00	3.00 6.00
Oct 1976		1.00	1.00	2.00	0.82	1.25	0.85	6.00	3.00 6.00
Jan 1977		8.00	8.00	8.00	8.00	1.25	8.00	6.00	3.00 6.00
April 1977		8.00	8.00	8.00	8.00	1.25	8.00	6.00	3.00 6.00
July 1977		8.00	8.00	8.00	8.00	1.25	8.00	6.00	3.00 6.00
Oct 1977		8.00	8.00	8.00	8.00	1.25	8.00	6.00	3.00 6.00
Jan 1978		8.00	8.00	8.00	8.00	1.25	8.00	6.00	3.00 6.00
April 1978		8.00	8.00	8.00	8.00	1.25	8.00	6.00	3.00 6.00
July 1978		8.00	8.00	8.00	8.00	1.25	8.00	6.00	3.00 6.00
Oct 1978		8.00	8.00	8.00	8.00	1.25	8.00	6.00	3.00 6.00
Jan 1979		8.00	8.00	8.00	8.00	1.25	8.00	6.00	3.00 6.00
April 1979		8.00	8.00	8.00	8.00	1.25	8.00	6.00	3.00 6.00
July 1979		8.00	8.00	8.00	8.00	1.25	8.00	6.00	3.00 6.00
Oct 1979		8.00	8.00	8.00	8.00	1.25	8.00	6.00	3.00 6.00
Jan 1980		8.00	8.00	8.00	8.00	1.25	8.00	10.00	12.00 ←-----
April 1980		8.00	8.00	8.00	8.00	1.25	8.00	10.00	12.00
July 1980		8.00	8.00	8.00	8.00	1.25	8.00	10.00	12.00
Oct 1980		8.00	8.00	8.00	8.00	1.25	8.00	10.00	12.00
Jan 1981	----->		8.00	8.00	8.00	1.25	8.00	10.00	12.00
April 1981			8.00	8.00	8.00	1.25	8.00	10.00	12.00
July 1981			8.00	8.00	8.00	12.00	8.00	10.00	12.00
Oct 1981			8.00	8.00	8.00	12.00	8.00	10.00	12.00
Jan 1982			12.00	12.00	12.00	12.00	8.00	10.00	12.00
April 1982			12.00	12.00	12.00	12.00	8.00	10.00	12.00
July 1982			12.00	12.00	12.00	12.00	8.00	10.00	12.00
Oct 1982			12.00	12.00	12.00	12.00	8.00	10.00	12.00
Jan 1983			12.00	12.00	12.00	12.00	12.00	10.00	12.00
April 1983			12.00	12.00	12.00	12.00	12.00	10.00	12.00
July 1983			12.00	12.00	12.00	12.00	12.00	10.00	12.00
Oct 1983			12.00	12.00	12.00	12.00	12.00	10.00	12.00
Jan 1984			12.00	12.00	12.00	12.00	12.00	20.00	20.00
April 1984			12.00	12.00	12.00	12.00	12.00	20.00	20.00
July 1984			12.00	12.00	12.00	12.00	12.00	20.00	20.00
Oct 1984			12.00	12.00	12.00	12.00	12.00	20.00	20.00
			AMALGAMATION EASTERN CAPE UNDERTAKING			AMALGAMATION NORTHERN & WESTERN CAPE UNDERTAKING			
Jan 1985			16.00			16.00	12.00	20.00	20.00
April 1985			16.00			16.00	12.00	20.00	20.00
July 1985			16.00			16.00	12.00	20.00	20.00
Sept 1985			16.00			16.00	12.00	20.00	20.00
Oct 1985			16.00			16.00	12.00	20.00	20.00

TABLE 10 - TARIFF B : DEMAND RATES NOTIFIED IN THE SCHEDULE OF STANDARD PRICES  
(BEFORE APPLICATION OF THE SURCHARGE/DISCOUNT)

UNDERTAKING	CAPE EASTERN	BORDER	ORANGE RIVER	CAPE WESTERN	CAPE NORTHERN	NATAL	EASTERN TVL	RAND & OFS
DATE	R/AMP	R/AMP	R/AMP	R/AMP	R/AMP	R/AMP	R/AMP	R/kW
Jan 1973	0.20	0.20	0.25	0.26	0.30	0.15	0.125	0.042
April 1973	0.20	0.20	0.25	0.26	0.30	0.15	0.125	0.042
July 1973	0.20	0.20	0.25	0.26	0.30	0.15	0.125	0.042
Oct 1973	0.20	0.20	0.25	0.26	0.30	0.15	0.125	0.042
Jan 1974	0.20	0.20	0.25	0.26	0.30	0.15	0.125	0.042
April 1974	0.20	0.20	0.25	0.26	0.30	0.15	0.125	-----
July 1974	0.20	0.20	0.25	0.26	0.30	0.15	-----	
Oct 1974	0.20	0.20	0.25	0.26	0.30	0.15		
Jan 1975	0.20	0.20	0.25	0.26	0.30	0.15		
April 1975	0.20	0.20	0.25	0.26	0.30	0.15		
July 1975	0.20	0.20	0.25	0.26	0.30	0.15		
Oct 1975	0.20	0.20	0.25	0.26	0.30	0.15		
Jan 1976	0.20	0.20	0.25	0.26	0.30	0.15		
April 1976	0.20	0.20	0.25	0.26	0.30	0.15		
July 1976	0.20	0.20	0.25	0.26	0.30	0.15		
Sept 1976	0.20	0.20	0.25	0.26	0.30	0.15		
Oct 1976	0.20	0.20	0.25	0.26	0.30	0.15		
Jan 1977	-----	-----	-----	-----	0.30	-----		
April 1977					0.30			
July 1977					0.30			
Oct 1977					0.30			
Jan 1978					0.30			
April 1978					0.30			
July 1978					0.30			
Oct 1978					0.30			
Jan 1979					0.30			
April 1979					0.30			
July 1979					0.30			
Oct 1979					0.30			
Jan 1980					0.30			
April 1980					0.30			
July 1980					0.30			
Oct 1980					0.30			
Jan 1981					0.30			
April 1981					0.30			
July 1981					-----			



TABLE 11 - TARIFF B : NOTIFIED ENERGY RATES IN c/kw.h TAKING INTO ACCOUNT THE QUARTERLY COAL COST ADJUSTMENT

(NOT ADJUSTED 1973-1975)

ONCE INTRODUCED, THE HIGH ENERGY RATE WAS APPLIED TO THE FIRST 500 KW.H CONSUMPTION

UNDERTAKING	CAPE EASTERN	BORDER	ORANGE RIVER	CAPE WESTERN	CAPE NORTH	NATAL	EASTERN TVL	RAND & OFS	
QUARTER	COAL COST (c/ton)								
Jan 1973	N/A	0.90	0.84	0.75	0.94	0.83	0.76	0.67	0.20
April 1973	N/A	0.90	0.84	0.75	0.94	0.83	0.76	0.67	0.20
July 1973	N/A	0.90	0.84	0.75	0.94	0.83	0.76	0.67	0.20
Oct 1973	N/A	0.90	0.84	0.75	0.94	0.83	0.76	0.67	0.20
Jan 1974	N/A	0.90	1.02	0.75	0.94	0.83	0.76	0.67	0.20
April 1974	N/A	0.90	1.02	0.75	0.94	0.83	0.76	0.67	1.80 0.90
July 1974	N/A	0.90	1.02	0.75	0.94	0.83	0.76	1.80 0.90	1.80 0.90
Oct 1974	N/A	0.90	1.02	0.75	0.94	0.83	0.76	1.80 0.90	1.80 0.90
Jan 1975	N/A	0.90	1.02	0.75	0.94	0.83	0.76	1.80 0.90	1.80 0.90
April 1975	N/A	0.90	1.02	0.75	0.94	0.83	0.76	1.80 0.90	1.80 0.90
July 1975	N/A	0.90	1.02	0.75	0.94	0.83	0.76	1.80 0.90	1.80 0.90
Oct 1975	N/A	0.90	1.02	0.75	0.94	0.83	0.76	1.80 0.90	1.80 0.90
Jan 1976	N/A	1.14	1.16	0.87	1.04	0.95	0.86	1.80 1.02	1.80 1.02
April 1976	N/A	1.14	1.18	0.90	1.08	0.98	0.88	1.80 1.05	1.80 1.05
July 1976	N/A	1.14	1.20	0.90	1.08	0.98	0.88	1.80 1.05	1.80 1.05
Sept 1976	N/A	5.37 2.67	5.37 2.67	5.37 2.67	5.37 2.67	5.37 2.67	5.37 2.67	5.37 2.67	5.37 2.67
Oct 1976	N/A	5.40 2.70	5.40 2.70	5.40 2.70	5.40 2.70	5.40 2.70	5.40 2.70	5.40 2.70	5.40 2.70
Jan 1977	N/A	5.40 2.70	5.40 2.70	5.40 2.70	5.40 2.70	5.40 2.70	5.40 2.70	5.40 2.70	5.40 2.70
April 1977	N/A	5.41 2.71	5.41 2.71	5.41 2.71	5.41 2.71	5.41 2.71	5.41 2.71	5.41 2.71	5.41 2.71
July 1977	N/A	5.42 2.72	5.42 2.72	5.42 2.72	5.42 2.72	5.42 2.72	5.42 2.72	5.42 2.72	5.42 2.72
Oct 1977	N/A	5.43 2.73	5.43 2.73	5.43 2.73	5.43 2.73	5.43 2.73	5.43 2.73	5.43 2.73	5.43 2.73
Jan 1978	N/A	5.43 2.73	5.43 2.73	5.43 2.73	5.43 2.73	5.43 2.73	5.43 2.73	5.43 2.73	5.43 2.73
April 1978	N/A	5.45 2.75	5.45 2.75	5.45 2.75	5.45 2.75	5.45 2.75	5.45 2.75	5.45 2.75	5.45 2.75
July 1978	N/A	5.44 2.74	5.44 2.74	5.44 2.74	5.44 2.74	5.44 2.74	5.44 2.74	5.44 2.74	5.44 2.74
Oct 1978	N/A	5.45 2.75	5.45 2.75	5.45 2.75	5.45 2.75	5.45 2.75	5.45 2.75	5.45 2.75	5.45 2.75
Jan 1979	608	5.46 2.76	5.46 2.76	5.46 2.76	5.46 2.76	5.46 2.76	5.46 2.76	5.46 2.76	5.46 2.76
April 1979	629	5.47 2.77	5.47 2.77	5.47 2.77	5.47 2.77	5.47 2.77	5.47 2.77	5.47 2.77	5.47 2.77
July 1979	639	5.47 2.77	5.47 2.77	5.47 2.77	5.47 2.77	5.47 2.77	5.47 2.77	5.47 2.77	5.47 2.77
Oct 1979	661	5.49 2.79	5.49 2.79	5.49 2.79	5.49 2.79	5.49 2.79	5.49 2.79	5.49 2.79	5.49 2.79
Jan 1980	677	5.50 2.80	5.50 2.80	5.50 2.80	5.50 2.80	5.50 2.80	5.50 2.80	5.50 2.80	5.50 2.80
April 1980	681	5.50 2.80	5.50 2.80	5.50 2.80	5.50 2.80	5.50 2.80	5.50 2.80	5.50 2.80	5.50 2.80
July 1980	727	5.52 2.82	5.52 2.82	5.52 2.82	5.52 2.82	5.52 2.82	5.52 2.82	5.52 2.82	5.52 2.82
Oct 1980	749	5.54 2.84	5.54 2.84	5.54 2.84	5.54 2.84	5.54 2.84	5.54 2.84	5.54 2.84	5.54 2.84
Jan 1981	787	----->	5.56 2.86	5.56 2.86	5.56 2.86	5.56 2.86	5.56 2.86	5.56 2.86	5.56 2.86
April 1981	815		5.58 2.88	5.58 2.88	5.58 2.88	5.58 2.88	5.58 2.88	5.58 2.88	5.58 2.88
July 1981	847		5.59 2.89	5.59 2.89	5.59 2.89	5.59 2.89	5.59 2.89	5.59 2.89	5.59 2.89
Oct 1981	894		5.62 2.92	5.62 2.92	5.62 2.92	5.62 2.92	5.62 2.92	5.62 2.92	5.62 2.92
Jan 1982	1056		8.78 5.48	8.58 5.28	7.73 4.43	7.13 4.43	4.57 2.42	4.97 2.97	5.37 2.97
April 1982	1190		8.86 5.56	8.66 5.36	7.81 4.51	7.21 4.51	4.63 2.48	5.04 3.04	5.44 3.04
July 1982	1175		8.86 5.56	8.65 5.35	7.80 4.50	7.21 4.51	4.62 2.47	5.03 3.03	5.43 3.03
Oct 1982	1170		8.85 5.55	8.64 5.34	7.79 4.49	7.20 4.50	4.61 2.46	5.02 3.02	5.42 3.02
Jan 1983	1150		8.83 5.53	8.62 5.32	7.78 4.48	7.18 4.48	4.60 2.45	5.00 3.00	5.40 3.00
April 1983	1130		8.82 5.52	8.61 5.31	7.77 4.47	7.17 4.47	4.59 2.44	5.00 3.00	5.40 3.00
July 1983	1280		8.91 5.61	8.70 5.40	7.86 4.56	7.26 4.56	4.63 2.48	5.06 3.06	5.46 3.06
Oct 1983	1280		8.91 5.61	8.70 5.40	7.86 4.56	7.26 4.56	4.63 2.48	5.06 3.06	5.46 3.06
Jan 1984	1293		8.90 5.60	8.69 5.39	7.85 4.55	7.25 4.55	4.63 2.48	5.06 3.06	5.46 3.06
April 1984	1249		8.88 5.58	8.67 5.37	7.83 4.53	7.23 4.53	4.61 2.46	5.04 3.04	5.44 3.04
July 1984	1244		8.87 5.57	8.66 5.36	7.82 4.52	7.22 4.52	4.61 2.46	5.04 3.04	5.44 3.04
Oct 1984	1250		8.88 5.58	8.67 5.37	7.83 4.53	7.23 4.53	4.61 2.46	5.04 3.04	5.44 3.04
			AMALGAMATION			AMALGAMATION			
			EASTERN CAPE UNDERTAKING		NORTHERN & WESTERN CAPE UNDERTAKING				
Jan 1985	1301		11.98	7.83	10.71	6.56	7.95 4.65	9.67 5.52	9.68 5.53
April 1985	1273		11.96	7.81	10.68	6.53	7.93 4.63	9.65 5.50	9.65 5.50
July 1985	1341		12.01	7.86	10.73	6.58	7.97 4.67	9.70 5.55	9.70 5.55
Sept 1985	1341		12.01	7.86	10.73	6.58	7.97 4.67	9.70 5.55	9.70 5.55
Oct 1985	1307		12.01	7.86	10.74	6.59	7.95 4.65	9.70 5.55	9.71 5.56

TABLE 12 - TARIFF B EFFECTIVE BASIC CHARGE IN RANDS (AFTER APPLICATION OF THE SURCHARGE/DISCOUNT)

UNDERTAKING	CAPE EASTERN	BORDER	ORANGE RIVER	CAPE WESTERN	CAPE NORTH	NATAL	EASTERN TVL	RAND & OFS
DATE								
Jan 1973	1.10	1.05	2.10	0.90	1.06	0.89	1.05	0.00
April 1973	1.18	1.18	2.25	0.96	1.16	0.96	1.13	0.00
July 1973	1.18	1.18	2.25	0.96	1.16	0.96	1.13	0.00
Oct 1973	1.18	1.18	2.25	0.96	1.16	0.96	1.13	0.00
Jan 1974	1.18	1.18	2.25	0.96	1.16	0.96	1.13	0.00
April 1974	1.20	1.18	2.40	0.96	1.16	0.98	1.20	2.61
July 1974	1.20	1.18	2.40	0.96	1.16	0.98	5.10	2.61
Oct 1974	1.20	1.18	2.40	0.96	1.16	0.98	5.10	2.61
Jan 1975	1.20	1.18	2.40	0.96	1.16	0.98	5.10	2.61
April 1975	1.40	1.30	2.80	1.00	1.34	1.06	5.55	3.06
July 1975	1.40	1.30	2.80	1.00	1.34	1.06	5.55	3.06
Oct 1975	1.40	1.30	2.80	1.00	1.34	1.06	5.55	3.06
Jan 1976	1.40	1.30	2.80	1.00	1.34	1.06	5.55	3.06
April 1976	1.60	1.50	3.20	1.15	1.53	1.21	6.30	3.53
July 1976	1.60	1.50	3.20	1.15	1.53	1.21	6.30	3.53
Sept 1976	0.98	0.75	1.50	0.62	1.75	0.64	7.20	3.98
Oct 1976	0.98	0.75	1.50	0.62	1.75	0.64	7.20	3.98
Jan 1977	9.80	7.60	7.60	7.60	2.19	7.60	8.85	4.95
April 1977	9.80	7.60	7.60	7.60	2.19	7.60	8.85	4.95
July 1977	9.80	7.60	7.60	7.60	2.19	7.60	8.85	4.95
Oct 1977	9.80	7.60	7.60	7.60	2.19	7.60	8.85	4.95
Jan 1978	11.20	7.60	9.60	8.00	2.66	7.60	10.65	5.93
April 1978	11.20	7.60	9.60	8.00	2.66	7.60	10.65	5.93
July 1978	11.20	7.60	10.40	8.00	2.66	7.60	10.65	5.93
Oct 1978	11.20	7.60	10.40	8.00	2.66	7.60	10.65	5.93
Jan 1979	11.60	8.00	11.00	8.40	2.66	7.60	11.25	6.24
April 1979	11.60	8.00	11.00	8.40	2.66	7.60	11.25	6.24
July 1979	11.60	8.00	11.00	8.40	2.66	7.60	11.25	6.24
Oct 1979	11.60	8.00	11.00	8.40	2.66	7.60	11.25	6.24
Jan 1980	11.60	8.00	11.60	8.40	2.66	7.60	18.75	24.96
April 1980	11.60	8.00	11.60	8.40	2.66	7.60	18.75	24.96
July 1980	12.40	8.60	12.40	9.00	2.81	8.00	9.00	11.04
Oct 1980	12.40	8.60	12.40	9.00	2.81	8.00	9.00	11.04
Jan 1981	----->	9.00	13.20	9.60	2.94	8.40	9.50	11.64
April 1981		9.00	13.20	9.60	2.94	8.40	9.50	11.64
July 1981		9.00	13.20	9.60	9.00	8.40	9.50	11.64
Oct 1981		9.00	13.20	9.60	9.00	8.40	9.50	11.64
Jan 1982		10.08	10.32	10.32	10.08	9.60	10.90	13.08
April 1982		10.08	10.32	10.32	10.08	9.60	10.90	13.08
July 1982		10.68	10.92	10.92	10.68	10.32	11.70	13.92
Oct 1982		10.68	10.92	10.92	10.68	10.32	11.70	13.92
Jan 1983		11.64	12.48	12.00	11.88	10.38	13.60	16.02
April 1983		11.64	12.48	12.00	11.88	10.38	13.60	16.02
July 1983		11.64	12.48	12.00	11.88	10.38	13.60	16.02
Oct 1983		11.64	12.48	12.00	11.88	10.38	13.60	16.02
Jan 1984		12.30	13.20	12.72	12.60	10.98	15.90	15.90
April 1984		12.30	13.20	12.72	12.60	10.98	15.90	15.90
July 1984		12.30	13.20	12.72	12.60	10.98	15.90	15.90
Oct 1984		12.30	13.20	12.72	12.60	10.98	15.90	15.90
			AMALGAMATION		AMALGAMATION			
			EASTERN CAPE UNDERTAKING		NORTHERN & WESTERN CAPE UNDERTAKING			
Jan 1985			12.64		13.28	12.12	17.40	17.60
April 1985			12.64		13.28	12.12	17.40	17.60
July 1985			12.64		13.28	12.12	17.40	17.60
Sept 1985			13.90		14.61	13.33	19.14	19.36
Oct 1985			13.90		14.61	13.33	19.14	19.36

TABLE 13 - TARIFF B : EFFECTIVE DEMAND RATES (AFTER APPLICATION OF THE SURCHARGE/DISCOUNT)

UNDERTAKING	CAPE EASTERN	BORDER	ORANGE RIVER	CAPE WESTERN	CAPE NORTHERN	NATAL	EASTERN TVL	RAND & OFS
DATE	R/AMP	R/AMP	R/AMP	R/AMP	R/AMP	R/AMP	R/AMP	R/kW
January 1973	0.220	0.210	0.263	0.286	0.255	0.158	0.131	0.050
April 1973	0.235	0.235	0.281	0.306	0.278	0.169	0.141	0.050
July 1973	0.235	0.235	0.281	0.306	0.278	0.169	0.141	0.050
October 1973	0.235	0.235	0.281	0.306	0.278	0.169	0.141	0.050
January 1974	0.235	0.235	0.281	0.306	0.278	0.169	0.141	0.050
April 1974	0.240	0.235	0.300	0.306	0.278	0.173	0.150	-----
July 1974	0.240	0.235	0.300	0.306	0.278	0.173	-----	
October 1974	0.240	0.235	0.300	0.306	0.278	0.173		
January 1975	0.240	0.235	0.300	0.306	0.278	0.173		
April 1975	0.280	0.260	0.350	0.319	0.323	0.188		
July 1975	0.280	0.260	0.350	0.319	0.323	0.188		
October 1975	0.280	0.260	0.350	0.319	0.323	0.188		
January 1976	0.280	0.260	0.350	0.319	0.323	0.188		
April 1976	0.320	0.300	0.400	0.364	0.368	0.214		
July 1976	0.320	0.300	0.400	0.364	0.368	0.214		
Sept 1976	0.195	0.150	0.188	0.195	0.420	0.113		
October 1976	0.195	0.150	0.188	0.195	0.420	0.113		
January 1977	-----	-----	-----	-----	0.525	-----		
April 1977					0.525			
July 1977					0.525			
October 1977					0.525			
January 1978					0.638			
April 1978					0.638			
July 1978					0.638			
October 1978					0.638			
January 1979					0.638			
April 1979					0.638			
July 1979					0.638			
October 1979					0.638			
January 1980					0.638			
April 1980					0.638			
July 1980					0.675			
October 1980					0.675			
January 1981					0.705			
April 1981					0.705			
July 1981								DISCONTINUED DEMAND CHARGES FOR ALL UNDERTAKINGS



TABLE 15 - TARIFF C: BASIC CHARGE IN RANDS NOTIFIED IN THE SCHEDULE OF STANDARD PRICES (BEFORE APPLICATION OF THE SURCHARGE/DISCOUNT) (ALTERNATIVE (A) - FLAT RATE TARIFF (SEE NOTES))									
UNDERTAKING		CAPE EASTERN	BORDER	ORANGE RIVER	CAPE WESTERN	CAPE NORTHERN	NATAL	EASTERN TVL	RAND & OFS
DATE									
Jan	1973	0.55	0.55	1.00	0.47	0.55	0.45	0.50	0.00
April	1973	0.55	0.55	1.00	0.47	0.55	0.45	0.50	0.00
July	1973	0.55	0.55	1.00	0.47	0.55	0.45	0.50	0.00
Oct	1973	0.55	0.55	1.00	0.47	0.55	0.45	0.50	0.00
Jan	1974	0.55	0.55	1.00	0.47	0.55	0.45	0.50	0.00
April	1974	0.55	0.55	1.00	0.47	0.55	0.45	0.50	3.00
July	1974	0.55	0.55	1.00	0.47	0.55	0.45	3.00	3.00
Oct	1974	0.55	0.55	1.00	0.47	0.55	0.45	3.00	3.00
Jan	1975	0.55	0.55	1.00	0.47	0.55	0.45	3.00	3.00
April	1975	0.55	0.55	1.00	0.47	0.55	0.45	3.00	3.00
July	1975	0.55	0.55	1.00	0.47	0.55	0.45	3.00	3.00
Oct	1975	0.55	0.55	1.00	0.47	0.55	0.45	3.00	3.00
Jan	1976	0.55	0.55	1.00	0.47	0.55	0.45	3.00	3.00
April	1976	0.55	0.55	1.00	0.47	0.55	0.45	3.00	3.00
July	1976	0.55	0.55	1.00	0.47	0.55	0.45	3.00	3.00
Sept	1976	4.00	4.00	4.00	2.65	0.55	4.00	3.00	3.00
Oct	1976	4.00	4.00	4.00	2.65	0.55	4.00	3.00	3.00
Jan	1977	4.00	4.00	4.00	2.65	0.55	4.00	3.00	3.00
April	1977	4.00	4.00	4.00	2.65	0.55	4.00	3.00	3.00
July	1977	4.00	4.00	4.00	2.65	0.55	4.00	3.00	3.00
Oct	1977	4.00	4.00	4.00	2.65	0.55	4.00	3.00	3.00
Jan	1978	4.00	4.00	4.00	2.65	0.55	4.00	3.00	3.00
April	1978	4.00	4.00	4.00	2.65	0.55	4.00	3.00	3.00
July	1978	4.00	4.00	4.00	2.65	0.55	4.00	3.00	3.00
Oct	1978	4.00	4.00	4.00	2.65	0.55	4.00	3.00	3.00
Jan	1979	4.00	4.00	4.00	2.65	0.55	4.00	3.00	3.00
April	1979	4.00	4.00	4.00	2.65	0.55	4.00	3.00	3.00
July	1979	4.00	4.00	4.00	2.65	0.55	4.00	3.00	3.00
Oct	1979	4.00	4.00	4.00	2.65	0.55	4.00	3.00	3.00
Jan	1980	4.00	4.00	4.00	2.65	0.55	4.00	5.00	6.00
April	1980	4.00	4.00	4.00	2.65	0.55	4.00	5.00	6.00
July	1980	4.00	4.00	4.00	2.65	0.55	4.00	5.00	6.00
Oct	1980	4.00	4.00	4.00	2.65	0.55	4.00	5.00	6.00
Jan	1981	----->	4.00	4.00	2.65	0.55	4.00	5.00	6.00
April	1981		4.00	4.00	2.65	0.55	4.00	5.00	6.00
July	1981		4.00	4.00	2.65	6.00	4.00	5.00	6.00
Oct	1981		4.00	4.00	2.65	6.00	4.00	5.00	6.00
Jan	1982		6.00	6.00	4.00	6.00	4.00	5.00	6.00
April	1982		6.00	6.00	4.00	6.00	4.00	5.00	6.00
July	1982		6.00	6.00	4.00	6.00	4.00	5.00	6.00
Oct	1982		6.00	6.00	4.00	6.00	4.00	5.00	6.00
Jan	1983		6.00	6.00	4.00	6.00	6.00	5.00	6.00
April	1983		6.00	6.00	4.00	6.00	6.00	5.00	6.00
July	1983		6.00	6.00	4.00	6.00	6.00	5.00	6.00
Oct	1983		6.00	6.00	4.00	6.00	6.00	5.00	6.00
Jan	1984		6.00	6.00	4.00	6.00	6.00	10.00	10.00
April	1984		6.00	6.00	4.00	6.00	6.00	10.00	10.00
July	1984		6.00	6.00	4.00	6.00	6.00	10.00	10.00
Oct	1984		6.00	6.00	4.00	6.00	6.00	10.00	10.00
				AMALGAMATION EASTERN CAPE UNDERTAKING		AMALGAMATION NORTHERN AND WESTERN CAPE UNDERTAKING			
Jan	1985			8.00		6.00	6.00	10.00	10.00
April	1985			8.00		6.00	6.00	10.00	10.00
July	1985			8.00		6.00	6.00	10.00	10.00
Sept	1985			8.00		6.00	6.00	10.00	10.00
Oct	1985			8.00		6.00	6.00	10.00	10.00



TABLE 17 - TARIFF C : EFFECTIVE BASIC CHARGE IN RANDS (AFTER APPLICATION OF THE SURCHARGE/DISCOUNT)

UNDERTAKING	CAPE EASTERN	BORDER	ORANGE RIVER	CAPE WESTERN	CAPE NORTHERN	NATAL	EASTERN TVL	RAND & OFS
DATE								
Jan 1973	0.61	0.58	1.05	0.52	0.47	0.47	0.53	0.00
April 1973	0.65	0.65	1.13	0.55	0.51	0.51	0.56	0.00
July 1973	0.65	0.65	1.13	0.55	0.51	0.51	0.56	0.00
Oct 1973	0.65	0.65	1.13	0.55	0.51	0.51	0.56	0.00
Jan 1974	0.65	0.65	1.13	0.55	0.51	0.51	0.56	0.00
April 1974	0.66	0.65	1.20	0.55	0.51	0.52	0.60	2.61
July 1974	0.66	0.65	1.20	0.55	0.51	0.52	2.55	2.61
Oct 1974	0.66	0.65	1.20	0.55	0.51	0.52	2.55	2.61
Jan 1975	0.66	0.65	1.20	0.55	0.51	0.52	2.55	2.61
April 1975	0.77	0.72	1.40	0.58	0.59	0.56	2.78	3.06
July 1975	0.77	0.72	1.40	0.58	0.59	0.56	2.78	3.06
Oct 1975	0.77	0.72	1.40	0.58	0.59	0.56	2.78	3.06
Jan 1976	0.77	0.72	1.40	0.58	0.59	0.56	2.78	3.06
April 1976	0.88	0.83	1.60	0.66	0.67	0.64	3.15	3.53
July 1976	0.88	0.83	1.60	0.66	0.67	0.64	3.15	3.53
Sept 1976	3.90	3.00	3.00	1.99	0.77	3.00	3.60	3.98
Oct 1976	3.90	3.00	3.00	1.99	0.77	3.00	3.60	3.98
Jan 1977	4.90	3.80	3.80	2.52	0.96	3.80	4.43	4.95
April 1977	4.90	3.80	3.80	2.52	0.96	3.80	4.43	4.95
July 1977	4.90	3.80	3.80	2.52	0.96	3.80	4.43	4.95
Oct 1977	4.90	3.80	3.80	2.52	0.96	3.80	4.43	4.95
Jan 1978	5.60	3.80	4.80	2.65	1.17	3.80	5.33	5.93
April 1978	5.60	3.80	4.80	2.65	1.17	3.80	5.33	5.93
July 1978	5.60	3.80	5.20	2.65	1.17	3.80	5.33	5.93
Oct 1978	5.60	3.80	5.20	2.65	1.17	3.80	5.33	5.93
Jan 1979	5.80	4.00	5.50	2.78	1.17	3.80	5.63	6.24
April 1979	5.80	4.00	5.50	2.78	1.17	3.80	5.63	6.24
July 1979	5.80	4.00	5.50	2.78	1.17	3.80	5.63	6.24
Oct 1979	5.80	4.00	5.50	2.78	1.17	3.80	5.63	6.24
Jan 1980	5.80	4.00	5.80	2.78	1.17	3.80	9.38	12.48
April 1980	5.80	4.00	5.80	2.78	1.17	3.80	9.38	12.48
July 1980	6.20	4.30	6.20	2.98	1.24	4.00	4.50	5.52
Oct 1980	6.20	4.30	6.20	2.98	1.24	4.00	4.50	5.52
Jan 1981	----->	4.50	6.60	3.18	1.29	4.20	4.75	5.82
April 1981		4.50	6.60	3.18	1.29	4.20	4.75	5.82
July 1981		4.50	6.60	3.18	4.50	4.20	4.75	5.82
Oct 1981		4.50	6.60	3.18	4.50	4.20	4.75	5.82
Jan 1982		5.04	5.16	3.44	5.04	4.80	5.45	6.54
April 1982		5.04	5.16	3.44	5.04	4.80	5.45	6.54
July 1982		5.34	5.46	3.64	5.34	5.16	5.85	6.96
Oct 1982		5.34	5.46	3.64	5.34	5.16	5.85	6.96
Jan 1983		5.82	6.24	4.00	5.94	5.19	6.80	8.01
April 1983		5.82	6.24	4.00	5.94	5.19	6.80	8.01
July 1983		5.82	6.24	4.00	5.94	5.19	6.80	8.01
Oct 1983		5.82	6.24	4.00	5.94	5.19	6.80	8.01
Jan 1984		6.15	6.60	4.24	6.30	5.49	7.95	7.95
April 1984		6.15	6.60	4.24	6.30	5.49	7.95	7.95
July 1984		6.15	6.60	4.24	6.30	5.49	7.95	7.95
Oct 1984		6.15	6.60	4.24	6.30	5.49	7.95	7.95
			AMALGAMATION EASTERN CAPE UNDERTAKING		AMALGAMATION NORTHERN & WESTERN CAPE UNDERTAKING			
Jan 1985			6.32		4.98	6.06	8.70	8.80
April 1985			6.32		4.98	6.06	8.70	8.80
July 1985			6.32		4.98	6.06	8.70	8.80
Sept 1985			6.95		5.48	6.67	9.57	9.68
Oct 1985			6.95		5.48	6.67	9.57	9.68

TABLE 18 - TARIFF C : EFFECTIVE ENERGY RATES IN c/kw.h (AFTER APPLICATION OF THE SURCHARGE/DISCOUNT)

UNDERTAKING	CAPE EASTERN	BORDER	ORANGE RIVER	CAPE WESTERN	CAPE NORTHERN	NATAL	EASTERN TVL	RAND & OFS		
DATE										
Jan 1973	8.250	7.875	8.400	5.500	8.500	7.350	3.717	5.625		
April 1973	8.813	8.813	9.000	5.875	9.250	7.875	3.983	6.000		
July 1973	8.813	8.813	9.000	5.875	9.250	7.875	3.983	6.000		
Oct 1973	8.813	8.813	9.000	5.875	9.250	7.875	3.983	6.000		
Jan 1974	8.813	8.813	9.000	5.875	9.250	7.875	3.983	6.000		
April 1974	9.000	8.813	9.600	5.875	9.250	8.050	4.248	1.566		
July 1974	9.000	8.813	9.600	5.875	9.250	8.050	0.680	0.765 1.566		
Oct 1974	9.000	8.813	9.600	5.875	9.250	8.050	0.680	0.765 1.566		
Jan 1975	9.000	8.813	9.600	5.875	9.250	8.050	1.530	0.765 1.566		
April 1975	10.500	9.750	11.200	6.125	10.750	8.750	1.665	0.833 1.836		
July 1975	10.500	9.750	11.200	6.125	10.750	8.750	1.665	0.833 1.836		
Oct 1975	10.500	9.750	11.200	6.125	10.750	8.750	1.665	0.833 1.836		
Jan 1976	10.500	9.750	11.200	6.125	10.750	8.750	1.665	0.944 1.836		
April 1976	12.000	11.250	12.800	7.000	12.250	9.975	1.890	1.103 2.115		
July 1976	12.000	11.250	12.800	7.000	12.250	9.975	1.890	1.103 2.115		
Sept 1976	5.236	2.603	4.028	2.003	4.028	2.003	3.465	2.003 14.000 3.203 1.590 2.160 1.260 2.385		
Oct 1976	5.265	2.633	4.050	2.025	4.050	2.025	3.488	2.025 14.000 3.225 1.613 2.160 1.296 2.385		
Jan 1977	6.615	3.308	5.130	2.565	5.130	2.565	4.418	2.565 17.500 4.085 2.043 2.655 1.593 2.970		
April 1977	6.627	3.320	5.140	2.575	5.140	2.575	4.427	2.575 17.500 4.095 2.052 2.655 1.623 2.970		
July 1977	6.640	3.332	5.149	2.584	5.149	2.584	4.437	2.584 17.500 4.104 2.062 2.655 1.637 2.970		
Oct 1977	6.652	3.344	5.159	2.594	5.159	2.594	4.446	2.594 17.500 4.114 2.071 2.655 1.652 2.970		
Jan 1978	7.602	3.822	5.159	2.594	6.516	3.276	4.680	2.730 21.250 4.114 2.071 3.195 1.988 3.555		
April 1978	7.630	3.850	5.178	2.613	6.540	3.300	4.700	2.750 21.250 4.133 2.090 3.195 2.024 3.555		
July 1978	7.616	3.836	5.168	2.603	7.072	3.562	4.690	2.740 21.250 4.123 2.081 3.195 2.006 3.555		
Oct 1978	7.630	3.850	5.178	2.613	7.085	3.575	4.700	2.750 21.250 4.133 2.090 3.195 2.024 3.555		
Jan 1979	7.917	4.002	5.460	2.760	7.508	3.795	4.946	2.898 21.250 4.142 2.100 3.375 2.138 3.744		
April 1979	7.932	4.017	5.470	2.770	7.521	3.809	4.956	2.909 21.250 4.152 2.109 3.375 2.156 5.824		
July 1979	7.932	4.017	5.470	2.770	7.521	3.809	4.956	2.909 21.250 4.152 2.109 3.375 2.175 3.744		
Oct 1979	7.961	4.046	5.490	2.790	7.549	3.836	4.977	2.930 21.250 4.171 2.128 3.375 2.194 3.744		
Jan 1980	7.975	4.060	5.500	2.800	7.975	4.060	4.988	2.940 21.250 4.180 2.138 3.375 2.213 3.744		
April 1980	7.975	4.060	5.500	2.800	7.975	4.060	4.988	2.940 21.250 4.180 2.138 3.375 2.213 3.744		
July 1980	8.556	4.371	5.934	3.032	8.556	4.371	5.366	3.173 22.500 4.420 2.270 4.365 2.565 4.830		
Oct 1980	8.587	4.402	5.956	3.053	8.587	4.402	5.389	3.195 22.500 4.440 2.290 4.383 2.583 4.848		
Jan 1981	----->	----->	6.255	3.218	9.174	4.719	5.772	3.432 23.500 4.683 2.426 4.636 2.736 5.122		
April 1981			6.278	3.240	9.207	4.752	5.796	3.456 23.500 4.704 2.447 4.655 2.755 5.141		
July 1981			6.289	3.251	9.224	4.769	5.808	3.468 5.265 3.240 4.715 2.457 4.674 2.774 5.160		
Oct 1981			6.323	3.285	9.273	4.818	5.844	3.504 5.295 3.270 4.746 2.489 4.703 2.803 5.190		
Jan 1982			7.375	4.603	7.379	4.541	6.218	3.810 5.989 3.721 5.484 2.904 5.417 3.237 5.853		
April 1982			7.442	4.670	7.448	4.610	6.287	3.879 6.056 3.788 5.556 2.976 5.494 3.314 5.930		
July 1982			7.885	4.948	7.872	4.869	6.643	4.095 6.417 4.014 5.960 3.186 5.885 3.545 6.299		
Oct 1982			7.877	4.940	7.862	4.859	6.634	4.086 6.408 4.005 5.947 3.173 5.873 3.533 6.287		
Jan 1983			8.565	5.364	8.965	5.533	7.280	4.480 7.108 4.435 6.773 3.918 6.800 4.080 7.209		
April 1983			8.555	5.354	8.954	5.522	7.270	4.470 7.098 4.425 6.764 3.910 6.800 4.080 7.209		
July 1983			8.643	5.442	9.048	5.616	7.360	4.560 7.187 4.514 6.859 4.005 6.882 4.162 7.289		
Oct 1983			8.643	5.442	9.048	5.616	7.360	4.560 7.187 4.514 6.827 4.005 6.882 4.162 7.289		
Jan 1984			9.123	5.740	9.559	5.929	7.791	4.823 7.613 4.778 7.256 4.236 7.664 4.365 7.664		
April 1984			9.102	5.720	9.537	5.907	7.770	4.802 7.592 4.757 7.238 4.218 7.640 4.341 7.640		
July 1984			9.092	5.709	9.526	5.896	7.759	4.791 7.581 4.746 7.238 4.218 7.640 4.341 7.640		
Oct 1984			9.102	5.720	9.537	5.907	7.770	4.802 7.592 4.757 7.238 4.218 7.640 4.341 7.640		
			AMALGAMATION EASTERN CAPE UNDERTAKING				AMALGAMATION NORTHERN & WESTERN CAPE UNDERTAKING			
Jan 1985			9.464	6.186			8.889	5.445	8.030 4.697 8.413 4.802 8.518	
April 1985			9.448	6.170			8.864	5.420	8.009 4.676 8.396 4.785 8.492	
July 1985			9.488	6.209			8.906	5.461	8.050 4.717 8.439 4.829 8.536	
Sept 1985			10.437	6.830			9.796	6.008	8.855 5.188 9.283 5.311 9.390	
Oct 1985			10.437	6.830			9.806	6.017	8.832 5.166 9.283 5.311 9.399	







TABLE 21 - TARIFF D : RAND AND ORANGE FREE STATE UNDERTAKING (1973, 1974) NOTIFIED AND EFFECTIVE CHARGES

HIGH RATE = 1 000 kW.h														
NOTIFIED IN THE SCHEDULE OF STANDARD PRICES							EFFECTIVE AFTER APPLICATION OF THE SURCHARGE / DISCOUNT							
DATE	% SURCHARGE		DEMAND	DEMAND RATE	ENERGY RATE		DEMAND		DEMAND RATE R/AMP		ENERGY RATES		ENERGY RATES	
	EXT AREA		CHARGE	R PER AMPERE	c/kW.h		CHARGE	EXT AREA	EXT AREA		c/kW.h		EXTENSION AREA	
January 1973	12.50	32.50	3.00	0.10	0.675	0.500	3.38	3.98	0.11	0.13	0.759	0.563	0.894	0.663
April 1973	20.00	40.00	3.00	0.10	0.675	0.500	3.60	4.20	0.12	0.14	0.810	0.600	0.945	0.700
July 1973	20.00	40.00	3.00	0.10	0.675	0.500	3.60	4.20	0.12	0.14	0.810	0.600	0.945	0.700
October 1973	20.00	40.00	3.00	0.10	0.675	0.500	3.60	4.20	0.12	0.14	0.810	0.600	0.945	0.700
January 1974	20.00	40.00	3.00	0.10	0.675	0.500	3.60	4.20	0.12	0.14	0.810	0.600	0.945	0.700

TABLE 22 - TARIFF D : BASIC CHARGE IN RANDS NOTIFIED IN THE SCHEDULE OF STANDARD PRICES (BEFORE APPLICATION OF THE SURCHARGE/DISCOUNT)								
UNDERTAKING		BORDER	ORANGE RIVER	CAPE WESTERN	CAPE NORTHERN	NATAL	EASTERN TVL	RAND & OFS
DATE								
Jan	1982	12.00	12.00	12.00	12.00	8.00	10.00	12.00
April	1982	12.00	12.00	12.00	12.00	8.00	10.00	12.00
July	1982	12.00	12.00	12.00	12.00	8.00	10.00	12.00
Oct	1982	12.00	12.00	12.00	12.00	8.00	10.00	12.00
Jan	1983	12.00	12.00	12.00	12.00	12.00	10.00	12.00
April	1983	12.00	12.00	12.00	12.00	12.00	10.00	12.00
July	1983	12.00	12.00	12.00	12.00	12.00	10.00	12.00
Oct	1983	12.00	12.00	12.00	12.00	12.00	10.00	12.00
Jan	1984	12.00	12.00	12.00	12.00	12.00	20.00	20.00
April	1984	12.00	12.00	12.00	12.00	12.00	20.00	20.00
July	1984	12.00	12.00	12.00	12.00	12.00	20.00	20.00
Oct	1984	12.00	12.00	12.00	12.00	12.00	20.00	20.00
			AMALGAMATION		AMALGAMATION			
			EASTERN CAPE		NORTHERN & WESTERN CAPE			
			UNDERTAKING		UNDERTAKING			
Jan	1985		16.00		16.00	12.00	20.00	20.00
April	1985		16.00		16.00	12.00	20.00	20.00
July	1985		16.00		16.00	12.00	20.00	20.00
Sept	1985		16.00		16.00	12.00	20.00	20.00
Oct	1985		16.00		16.00	12.00	20.00	20.00

TABLE 23 - TARIFF D : ENERGY RATES IN c/kw.h NOTIFIED IN THE SCHEDULE OF STANDARD PRICES TAKING INTO ACCOUNT THE COAL COST ADJUSTMENT (BEFORE APPLICATION OF THE SURCHARGE/DISCOUNT)															
THE HIGH ENERGY RATE IS APPLIED TO THE FIRST 800 kW.h															
UNDERTAKING		BORDER		ORANGE RIVER		CAPE WESTERN		CAPE NORTHERN		NATAL		EASTERN TVL		RAND & OFS	
QUARTER	COAL COST														
	(c/ton)														
Jan	1982	8.78	5.48	8.58	5.28	7.73	4.43	7.13	4.43	4.57	2.42	4.97	2.97	5.37	2.97
April	1982	8.86	5.56	8.66	5.36	7.81	4.51	7.21	4.51	4.63	2.48	5.04	3.04	5.44	3.04
July	1982	8.86	5.56	8.65	5.35	7.80	4.50	7.21	4.51	4.62	2.47	5.03	3.03	5.43	3.03
Oct	1982	8.85	5.55	8.64	5.34	7.79	4.49	7.20	4.50	4.61	2.46	5.02	3.02	5.42	3.02
Jan	1983	8.83	5.53	8.62	5.32	7.78	4.48	7.18	4.48	7.83	4.53	5.00	3.00	5.40	3.00
April	1983	8.82	5.52	8.61	5.31	7.77	4.47	7.17	4.47	7.82	4.52	5.00	3.00	5.40	3.00
July	1983	8.91	5.61	8.70	5.40	7.86	4.56	7.26	4.56	7.93	4.63	5.06	3.06	5.46	3.06
Oct	1983	8.91	5.61	8.70	5.40	7.86	4.56	7.26	4.56	7.89	4.63	5.06	3.06	5.46	3.06
Jan	1984	8.90	5.60	8.69	5.39	7.85	4.55	7.25	4.55	7.93	4.63	9.64	5.49	9.64	5.49
April	1984	8.88	5.58	8.67	5.37	7.83	4.53	7.23	4.53	7.91	4.61	9.61	5.46	9.61	5.46
July	1984	8.87	5.57	8.66	5.36	7.82	4.52	7.22	4.52	7.91	4.61	9.61	5.46	9.61	5.46
Oct	1984	8.88	5.58	8.67	5.37	7.83	4.53	7.23	4.53	7.91	4.61	9.61	5.46	9.61	5.46
			AMALGAMATION		AMALGAMATION										
			EASTERN CAPE		NORTHERN & WESTERN CAPE										
			UNDERTAKING		UNDERTAKING										
Jan	1985		11.98	7.83		10.71	6.56		7.95	4.65		9.67	5.52	9.68	5.53
April	1985		11.96	7.81		10.68	6.53		7.93	4.63		9.65	5.50	9.65	5.50
July	1985		12.01	7.86		10.73	6.58		7.97	4.67		9.70	5.55	9.70	5.55
Sept	1985		12.01	7.86		10.73	6.58		7.97	4.67		9.70	5.55	9.70	5.55
Oct	1985		12.01	7.86		10.74	6.59		7.95	4.65		9.70	5.55	9.71	5.56

TABLE 24 - TARIFF D : EFFECTIVE BASIC CHARGE IN RANDS (AFTER APPLICATION OF THE SURCHARGE/DISCOUNT)								
UNDERTAKING		BORDER	ORANGE RIVER	CAPE WESTERN	CAPE NORTHERN	NATAL	EASTERN TVL	RAND & OFS
DATE								
Jan	1982	10.08	10.32	10.32	10.08	9.60	10.90	13.08
April	1982	10.08	10.32	10.32	10.08	9.60	10.90	13.08
July	1982	10.68	10.92	10.92	10.68	10.32	11.70	13.92
Oct	1982	10.68	10.92	10.92	10.68	10.32	11.70	13.92
Jan	1983	11.64	12.48	12.00	11.88	10.38	13.60	16.02
April	1983	11.64	12.48	12.00	11.88	10.38	13.60	16.02
July	1983	11.64	12.48	12.00	11.88	10.38	13.60	16.02
Oct	1983	11.64	12.48	12.00	11.88	10.38	13.60	16.02
Jan	1984	12.30	13.20	12.72	12.60	10.98	15.90	15.90
April	1984	12.30	13.20	12.72	12.60	10.98	15.90	15.90
July	1984	12.30	13.20	12.72	12.60	10.98	15.90	15.90
Oct	1984	12.30	13.20	12.72	12.60	10.98	15.90	15.90
		AMALGAMATION		AMALGAMATION				
		EASTERN CAPE		NORTHERN & WESTERN CAPE				
		UNDERTAKING		UNDERTAKING				
Jan	1985	12.64		13.28		12.12	17.40	17.60
April	1985	12.64		13.28		12.12	17.40	17.60
July	1985	12.64		13.28		12.12	17.40	17.60
Sept	1985	13.90		14.61		13.33	19.14	19.36
Oct	1985	13.90		14.61		13.33	19.14	19.36

TABLE 25 - TARIFF D : EFFECTIVE ENERGY RATES IN c/kW.h (AFTER APPLICATION OF THE SURCHARGE/DISCOUNT)															
THE HIGH ENERGY RATE IS APPLIED TO THE FIRST 800 kW.h															
UNDERTAKING		BORDER		ORANGE RIVER		CAPE WESTERN		CAPE NORTHERN		NATAL		EASTERN TVL		RAND & OFS	
DATE															
Jan	1982	7.375	4.603	7.379	4.541	6.648	3.810	5.989	3.721	5.484	2.904	5.417	3.237	5.853	3.237
April	1982	7.442	4.670	7.448	4.610	6.717	3.879	6.056	3.788	5.556	2.976	5.494	3.314	5.930	3.314
July	1982	7.885	4.948	7.872	4.869	7.098	4.095	6.417	4.014	5.960	3.186	5.885	3.545	6.299	3.515
Oct	1982	7.877	4.940	7.862	4.859	7.089	4.086	6.408	4.005	5.947	3.173	5.873	3.533	6.287	3.503
Jan	1983	8.565	5.364	8.965	5.533	7.780	4.480	7.108	4.435	6.773	3.918	6.800	4.080	7.209	4.005
April	1983	8.555	5.354	8.954	5.522	7.770	4.470	7.098	4.425	6.764	3.910	6.800	4.080	7.209	4.005
July	1983	8.643	5.442	9.048	5.616	7.860	4.560	7.187	4.514	6.859	4.005	6.882	4.162	7.289	4.085
Oct	1983	8.643	5.442	9.048	5.616	7.860	4.560	7.187	4.514	6.827	4.005	6.882	4.162	7.289	4.085
Jan	1984	9.123	5.740	9.559	5.929	8.321	4.823	7.613	4.778	7.256	4.236	7.664	4.365	7.664	4.365
April	1984	9.102	5.720	9.537	5.907	8.300	4.802	7.592	4.757	7.238	4.218	7.640	4.341	7.640	4.341
July	1984	9.092	5.709	9.526	5.896	8.289	4.791	7.581	4.746	7.238	4.218	7.640	4.341	7.640	4.341
Oct	1984	9.102	5.720	9.537	5.907	8.300	4.802	7.592	4.757	7.238	4.218	7.640	4.341	7.640	4.341
		AMALGAMATION		AMALGAMATION											
		EASTERN CAPE		NORTHERN & WESTERN CAPE											
		UNDERTAKING		UNDERTAKING											
Jan	1985	9.464	6.186			8.889	5.445	8.030	4.697	8.413	4.802	8.518	4.866		
April	1985	9.448	6.170			8.864	5.420	8.009	4.676	8.396	4.785	8.492	4.840		
July	1985	9.488	6.209			8.906	5.461	8.050	4.717	8.439	4.829	8.536	4.884		
Sept	1985	10.437	6.830			9.796	6.008	8.855	5.188	9.283	5.311	9.390	5.372		
Oct	1985	10.437	6.830			9.806	6.017	8.832	5.166	9.283	5.311	9.399	5.382		

## SECTION 4

### INDIVIDUAL TARIFFS - 1986 TO 1991

This section covers the national tariffs from their introduction in January 1986 until 1991. These tariffs were applied countrywide. Each table represents a different tariff.

The figures for all tariffs for January 1986, July 1986 and January 1987 are reflected first as they were published in the Schedule of Standard Prices, and then in effective terms, i.e. after the application of the surcharge or discount applicable at that time.

The concept of a surcharge was done away with effect from July 1987 i.e. the tariffs were all published in effective terms.

The October 1991 increase reflected is purely as a result of the introduction of Value Added Tax (VAT) of 10 % on electricity. In practice, the customer's account is calculated and then VAT applied to the total.

#### 4.1 LARGE POWER TARIFFS

The Tariffs applicable to Large Power Users are Tariffs A, E and F.

1. Tariff A is defined as follows :

"For electricity supplied to a consumer whose notified maximum demand is 25 kW/kV.A or over, in the form of three-phase alternating current at a frequency of 50 hertz and at an agreed voltage which is available in the vicinity, excepting supplies furnished under Tariffs (E) or (F),..."

Most large power customers are charged Tariff A, while some are charged Tariffs E and F, and more lately a few customers have been put on Options T1 and T2.

2. Tariff E was introduced in January 1986, and is defined in the Schedule of Standard Prices as follows :

"For electricity supplied to a consumer whose maximum demand is 25 kV.A or over, and who elects to be charged for demand on the basis of the maximum demand measured during peak hours, in the form of three-phase alternating current at a frequency of 50 hertz and at an agreed voltage which is available in the vicinity, ..."

This tariff is of benefit to a large power customer whose electricity consumption pattern is such that the peak demand can be moved to occur during Eskom's off-peak hours. The customer only pays for the maximum demand measured during the peak hours, thus that measured during off-peak hours is free of demand charge (see Section 1 paragraph 1.3.4).

3. Tariff F was introduced from July 1987 and is defined in the Schedule of Standard Prices as follows :

"For electricity supplied at a nominal phase-to-phase voltage of 22 000 volts or 11 000 volts or lower than 500 volts to a consumer whose notified maximum demand is 25 kV.A or over, excepting supplies furnished under Tariffs (A) or (E), ..."

Tariff F was introduced to benefit low load factor customers, in particular irrigation farmers (see Section 1 paragraph 1.3.4).

4. The total of the account calculated for a Large Power customer in terms of Tariff A, E or F is subject to a transmission percentage surcharge to take account of differences of transmission costs between different areas. The transmission percentage charge is applied as follows :

Nil for points of supply situated a linear distance up to and including 300 kilometers from Johannesburg.

1 % for points of supply situated a linear distance exceeding 300 and up to 600 kilometers from Johannesburg.

2 % for points of supply situated a linear distance exceeding 600 and up to 900 kilometers from Johannesburg.

3 % for points of supply situated a linear distance from Johannesburg exceeding 900 kilometers.

Notes to Tables :

**TABLE 26 - TARIFF A (LARGE POWER USERS)**

The figures shown are before application of the transmission percentage charge.

**TABLE 27 - TARIFF E (LARGE POWER OFF-PEAK USE)**

The table shows tariff figures from 1986 when the tariff was first introduced.

The figures shown are before application of the transmission percentage surcharge.

**TABLE 28 - TARIFF F (LARGE POWER VARIABLE USE)**

The figures shown are from July 1987 when the tariff was first introduced.

The transmission percentage surcharge has not been applied to the figures shown.





TABLE 27 - TARIFF E (LARGE POWER OFF-PEAK USE)																		
	1986		1986		1987		1987		1988		1989		1990		1991		1991	
	JANUARY		JULY		JANUARY		JULY		JANUARY		JANUARY		JANUARY		JANUARY		OCTOBER	
	EFFECTIVE		EFFECTIVE		EFFECTIVE												(VAT)	
BASIC CHARGE (R)	110.00	121.00	110.00	133.10	110.00	149.05	149.05		163.96	180.36	205.61	222.06						244.27
DEMAND RATES (R/kV.A)																		
380/220V	11.17	12.29	11.17	13.51	11.17	15.13	15.13		16.64	18.30	20.87	22.53						24.78
>380<66000V	10.73	11.80	10.73	12.98	10.73	14.53	14.53		15.98	17.58	20.04	21.64						23.80
66000V TO 132000V	10.29	11.32	10.29	12.45	10.29	13.94	13.94		15.33	16.86	19.22	20.76						22.84
>132000V	9.85	10.84	9.85	11.92	9.85	13.34	13.34		14.67	16.14	18.40	19.87						21.86
OR ALT :																		
DEMAND RATES (R/kW)																		
380/220V	12.00	13.20	12.00	14.52	12.00	16.26	16.26		17.89	19.68	22.44	24.24						26.66
>380<66000V	11.55	12.71	11.55	13.98	11.55	15.65	15.65		17.22	18.94	21.59	23.32						25.65
66000V TO 132000V	11.11	12.22	11.11	13.44	11.11	15.05	15.05		16.56	18.22	20.77	22.43						24.67
>132000V	10.67	11.74	10.67	12.91	10.67	14.45	14.45		15.90	17.49	19.94	21.54						23.69
ENERGY RATE (c/kW.h)	2.057	2.263	2.057	2.488	2.057	2.787	2.787		3.066	3.373	3.845	4.153						4.569
MINIMUM RATE (c/kW.h)	3.300	3.630	3.300	3.993	3.300	4.471	4.471		4.918	5.410	6.167	6.660						7.326
SURCHARGE (%)	10.00		21.00		35.50		N/A		N/A		N/A		N/A		N/A		N/A	

TABLE 28 - TARIFF F (LARGE POWER VARIABLE USE)												
	1987		1988		1989		1990		1991		1991	
	JULY		JANUARY		JANUARY		JANUARY		JANUARY		OCTOBER	
BASIC CHARGE (R)	67.07	73.78	81.16	92.52	99.92	109.91						
DEMAND RATES (R/kV.A)												
380/220V	15.13	16.64	18.30	20.87	22.53	24.78						
11 kV OR 22 kV	14.53	15.98	17.58	20.04	21.64	23.81						
ENERGY RATE (c/kW.h)	2.787	3.066	3.373	3.845	4.153	4.568						
MAXIMUM OVERALL (c/kW.h)	12.88	14.17	15.59	17.773	19.195	21.115						

## 4.2 SMALL POWER USER TARIFFS

The tariffs applicable to Small Power Users from 1986 are Tariffs B, C, D and S1.

1. Tariff B for Small Power Users - Urban is defined in the Schedule of Standard Prices as follows :

"For a supply of electricity for purposes other than domestic to a consumer within a legally constituted township or within an area considered by Eskom to be equivalent thereto, the maximum demand of such supply at no time exceeding 100 kV.A, and being made available at a nominal voltage lower than 500 volts or as otherwise agreed,.."

Tariff B is generally applicable to small businesses within urban areas.

2. Tariff C for Domestic Users - Urban is defined as follows :

"For a supply of electricity for domestic purposes for a dwelling unit or a group of dwelling units, or for a church, hall, old-age home or the like premises, within a legally constituted township or within an area considered by Eskom to be similar to a legally constituted township, ..."

As explained in the definition, Tariff C is applied to domestic supplies within urban areas.

3. Tariff D for Small Power Users - General is defined as follows :

"For a supply of electricity to a consumer whose maximum demand at no time exceeds 100 kV.A, made available at a nominal voltage lower than 500 volts or as otherwise agreed, and who does not qualify for tariffs B or C, ..."

Tariff D is generally applied to all rural supplies, in particular farming supplies. Most Tariff D supplies are also charged a capital charge ("Monthly Rental") in addition to the standard tariff (see also Section 1 paragraph 1.3.1).

4. Tariff S1 for Small Power Users - Low Use is defined as follows :

"For a single-phase supply of electricity to a consumer within areas (as designated by Eskom from time to time) where a prepayment measurement system is in effect, the consumer shall pay in advance for each kW.h supplied at the rate of ..."

Tariff S1 is the first of a new range of tariffs to be introduced for small power users (see also Section 1 paragraph 1.3.5).

Notes to Tables :

### **TABLE 29 - SMALL POWER USER TARIFFS 1986 TO 1991**

This table reflects the tariffs for Tariff B, Tariff C and Tariff D.

A single unit rate was introduced for tariff C as from July 1987.

### **TABLE 30 - TARIFF S1 (SMALL POWER USERS, LOW-USE)**

Tariff S1 was only introduced in September 1989 and was thus not subject to the tariff increase applied in January 1990.

#### **4.3 STREET LIGHTING TARIFF**

In the Schedule of Standard Prices, the Street Lighting is covered by paragraph 3 which states that "Where Eskom provided a supply for, and maintains, any street lighting or similar public lighting, the charge for such supply and services shall be fixed by special agreement between Eskom and the consumer."

TABLE 29 - SMALL POWER TARIFFS 1986 TO 1991												
	1986 JANUARY		1986 JULY		1987 JANUARY		1987 JULY	1988 JANUARY	1989 JANUARY	1990 JANUARY	1991 JANUARY	1991 OCTOBER (VAT)
	EFFECTIVE		EFFECTIVE		EFFECTIVE							
TARIFF B												
-----												
BASIC CHARGE (R)												
UP TO 25 kV.A	14.30	15.73	14.30	17.30	14.30	19.37	19.37	21.31	23.44	26.72	28.86	31.75
26 TO 50 kV.A	23.10	25.41	23.10	27.95	23.10	31.30	31.30	34.43	37.87	43.17	46.62	51.28
51 TO 100 kV.A	39.60	43.56	39.60	47.91	39.60	53.65	53.65	59.02	64.92	74.01	79.93	87.92
UNIT RATE (c/kW.h)												
UP TO 500 kW.h	9.51	10.46	9.51	11.50	9.51	12.88	12.88	14.17	15.59	17.773	19.195	21.115
REMAINDER	5.50	6.05	5.50	6.65	5.50	7.45	7.45	8.20	9.02	10.283	11.106	12.217
SURCHARGE (%)	10.00		21.00		35.50							
TARIFF C												
-----												
BASIC CHARGE (R)												
	6.60	7.26	6.60	7.98	6.60	8.94	16.00	17.60	19.36	22.07	23.84	26.22
UNIT RATE (c/kW.h)												
UP TO 300 kW.h	9.51	10.46	9.51	11.50	9.51	12.88	8.70	9.57	10.53	12.004	12.964	14.260
REMAINDER	5.50	6.05	5.50	6.65	5.50	7.45	8.70	9.57	10.53	12.004	12.964	14.260
SURCHARGE (%)	10.00		21.00		35.50							
TARIFF D												
-----												
BASIC CHARGE (R)												
UP TO 25 kV.A	24.20	26.62	24.20	29.28	24.20	32.79	32.79	36.07	39.68	45.24	48.86	53.75
26 TO 50 kV.A	33.00	36.30	33.00	39.93	33.00	44.71	44.71	49.18	54.10	61.67	66.60	73.26
51 TO 100 kV.A	49.50	54.45	49.50	59.89	49.50	67.07	67.07	73.78	81.16	92.52	99.92	109.91
UNIT RATE (c/kW.h)												
UP TO 1000 kW.h	9.51	10.46	9.51	11.50	9.51	12.88	12.88	14.17	15.59	17.773	19.195	21.115
REMAINDER	5.50	6.05	5.50	6.65	5.50	7.45	7.45	8.20	9.02	10.283	11.106	12.217
SURCHARGE (%)	10.00		21.00		35.50							

TABLE 30 - TARIFF S1 (SMALL POWER USERS, LOW USE)

SEPT	1989	16 c/kW.h
JAN	1990	16 c/kW.h
JAN	1991	17.28 c/kW.h
OCT (VAT)	1991	19.01 c/kW.h

**SECTION 5**  
**TRENDS & GRAPHS**

This section contains the graphic representation of average customer payment trends. Also included are tables showing average customer details for Tariffs A to D. The tables show the average account based on certain assumptions, as well as the average c/kW.h paid.

**GRAPHS 3 TO 8: AVERAGE c/kW.h**

GRAPH 3	TARIFF A
4	TARIFF B
5	TARIFF C
6	TARIFF D
7	TARIFF E
8	TARIFF F

These graphs illustrate the information contained in Tables 32, 34, 36 and 38, and average c/kW.h information for Tariffs E and F.

**TABLE 31 - TARIFF A : EXAMPLE OF AN AVERAGE CUSTOMER ACCOUNT**

**TABLE 32 - TARIFF A : AVERAGE C/KW.H (GRAPH 3)**

**TABLE 33 - TARIFF B : EXAMPLE OF AN AVERAGE CUSTOMER ACCOUNT**

**TABLE 34 - TARIFF B : AVERAGE C/KW.H (GRAPH 4)**

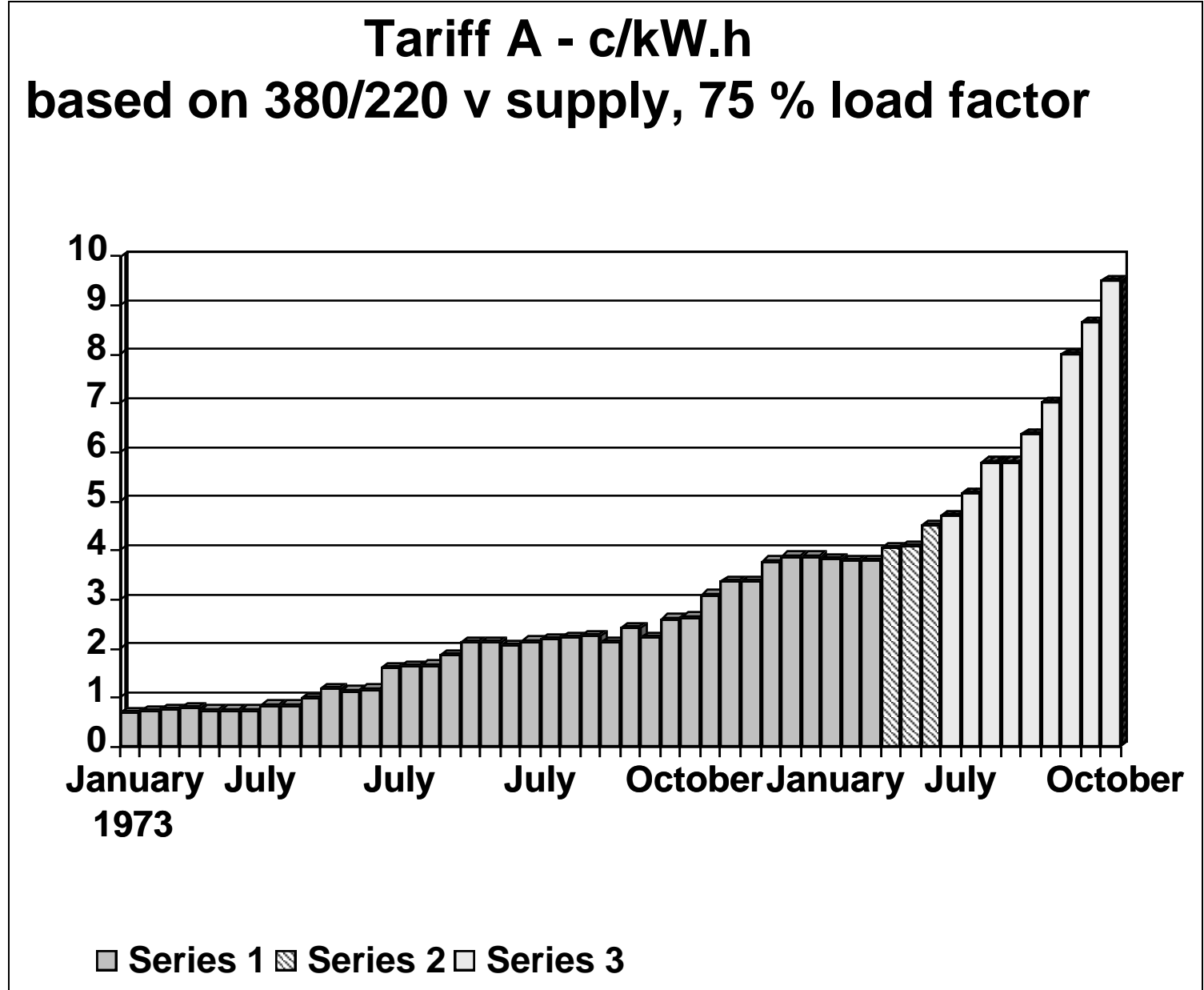
**TABLE 35 - TARIFF C : EXAMPLE OF AN AVERAGE CUSTOMER ACCOUNT**

**TABLE 36 - TARIFF C : AVERAGE C/KW.H (GRAPH 5)**

**TABLE 37 - TARIFF D : AVERAGE CUSTOMER ACCOUNT**

**TABLE 38 - TARIFF D : AVERAGE C/KW.H (GRAPH 6)**

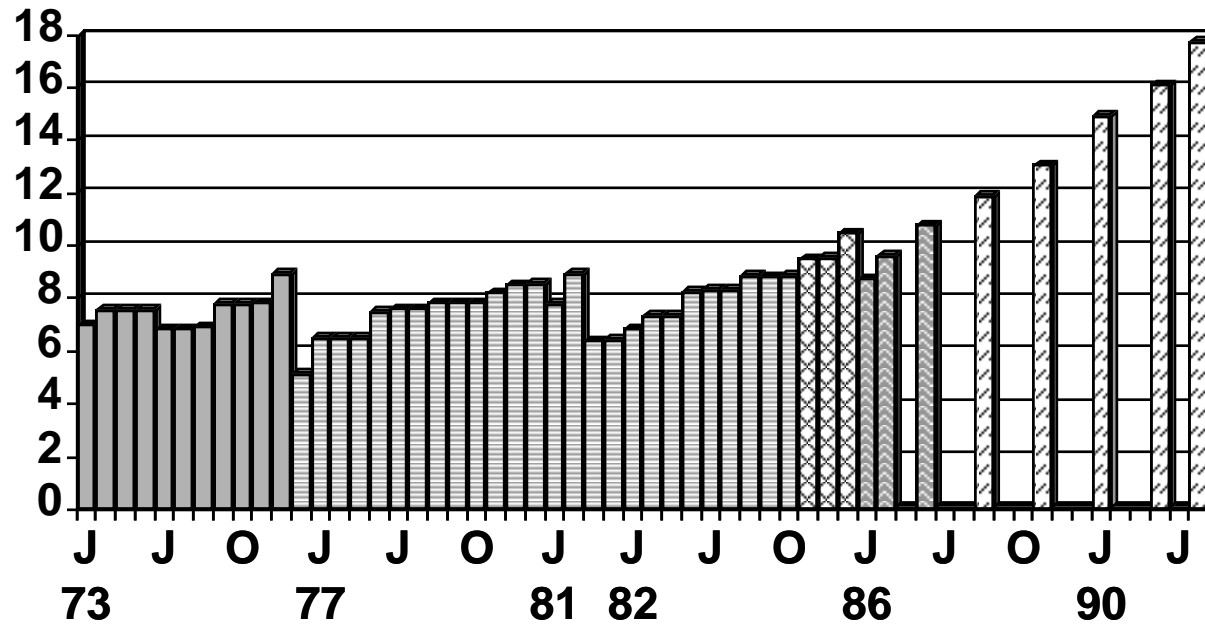
**GRAPH 5**



**GRAPH 6**

GRAPH 7

**Tariff C c/kW.h**  
**based on 400 kW.h until 1985, 750 kW.h 1986 ->**

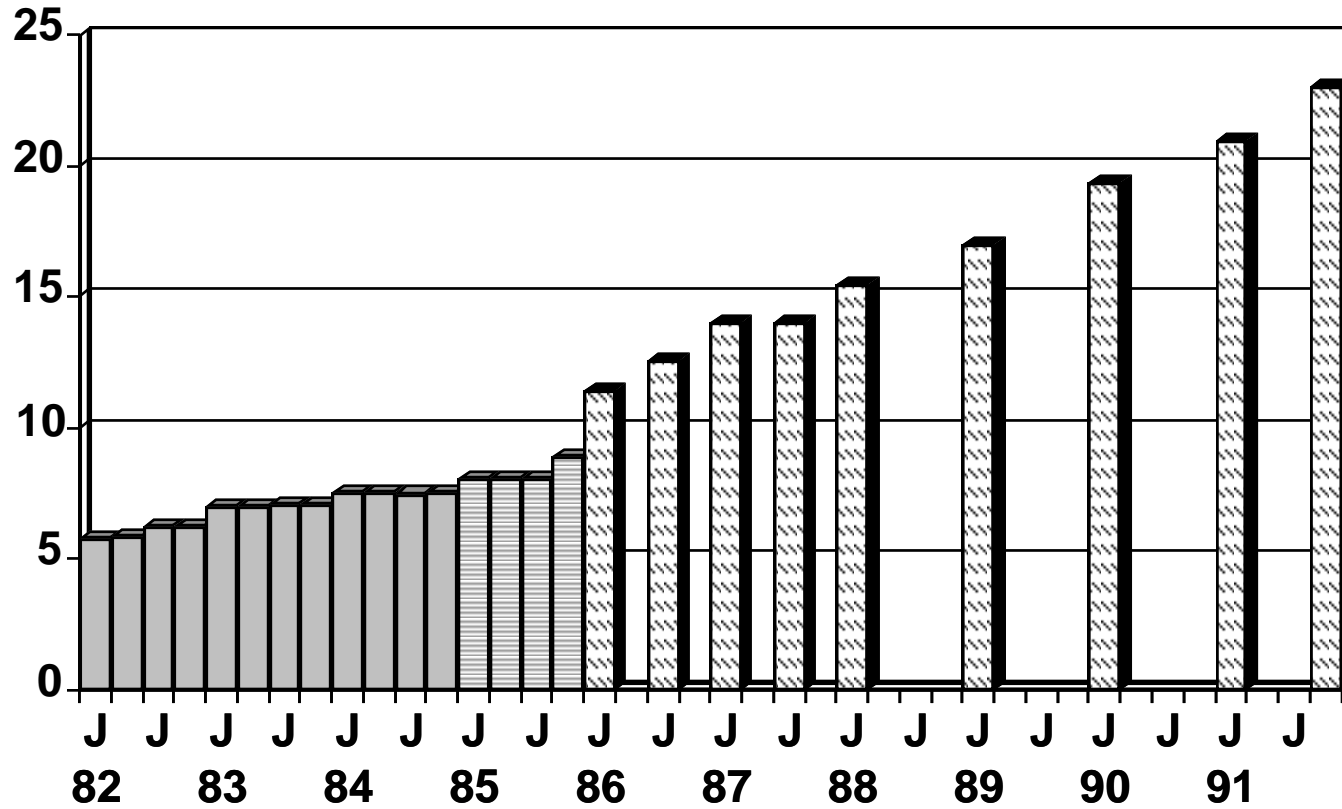


■ Series 1 ▨ Series 2 ⊠ Series 3 ▩ Series 4 ▤ Series 5



**GRAPH 8**

**tariff D c/kW.h  
50 kV.A using 1 500 kW.h**



■ Series 1 ■ Series 2 ■ Series 3

**GRAPH 9**

**GRAPH 10**





TABLE 33 - TARIFF B : EXAMPLE OF AN AVERAGE CUSTOMER ACCOUNT (IN RANDS) ASSUMING 55 AMPERE DEMAND,

2500 kW.h CONSUMPTION									
UNDERTAKING	CAPE EASTERN	BORDER	ORANGE RIVER	CAPE WESTERN	CAPE NORTHERN	NATAL	EASTERN TVL	RAND & OFS	
DATE									
Jan 1973	37.95	34.65	36.23	42.48	32.73	29.51	25.86	60.61	
April 1973	40.54	38.78	38.81	45.38	35.61	31.61	27.70	60.61	
July 1973	40.54	38.78	38.81	45.38	35.61	31.61	27.70	60.61	
Oct 1973	40.54	38.78	38.81	45.38	35.61	31.61	27.70	60.61	
Jan 1974	40.54	44.06	38.81	45.38	35.61	31.61	27.70	60.61	
April 1974	41.40	44.06	41.40	45.38	35.61	32.32	29.55	26.10	
July 1974	41.40	44.06	41.40	45.38	35.61	32.32	28.05	26.10	
Oct 1974	41.40	44.06	41.40	45.38	35.61	32.32	28.05	26.10	
Jan 1975	41.40	44.06	41.40	45.38	35.61	32.32	28.05	26.10	
April 1975	48.30	48.75	48.30	47.31	41.39	35.13	30.53	30.60	
July 1975	48.30	48.75	48.30	47.31	41.39	35.13	30.53	30.60	
Oct 1975	48.30	48.75	48.30	47.31	41.39	35.13	30.53	30.60	
Jan 1976	56.70	53.30	52.50	50.37	44.61	38.25	32.75	33.05	
April 1976	64.80	62.25	61.20	58.97	51.76	44.32	37.80	38.78	
July 1976	64.80	63.00	61.20	58.97	51.76	44.32	37.80	38.78	
Sept 1976	89.94	69.19	68.25	71.53	59.15	54.64	43.20	43.73	
Oct 1976	90.68	69.75	68.81	72.09	60.20	55.20	43.92	44.52	
Jan 1977	109.03	84.55	84.55	84.55	75.25	68.88	53.99	55.44	
April 1977	109.33	84.79	84.79	84.79	76.13	69.11	54.58	56.10	
July 1977	109.64	85.03	85.03	85.03	76.56	69.35	54.87	56.43	
Oct 1977	109.94	85.26	85.26	85.26	77.00	69.59	55.17	56.76	
Jan 1978	125.65	85.26	107.70	89.75	93.50	69.59	66.39	67.94	
April 1978	126.35	85.74	108.30	90.25	94.56	70.06	67.10	68.73	
July 1978	126.00	85.50	117.00	90.00	94.03	69.83	66.74	68.34	
Oct 1978	126.35	85.74	117.33	90.25	94.56	70.06	67.10	68.73	
Jan 1979	131.23	90.50	124.44	95.03	94.56	70.30	70.88	72.38	
April 1979	131.59	90.75	124.78	95.29	95.09	70.54	71.25	83.20	
July 1979	131.59	90.75	124.78	95.29	95.63	70.54	71.63	73.22	
Oct 1979	132.31	91.25	125.47	95.81	96.16	71.01	72.00	73.63	
Jan 1980	132.68	91.50	132.68	96.08	96.69	71.25	79.88	92.77	
April 1980	132.68	91.50	132.68	96.08	96.69	71.25	79.88	92.77	
July 1980	142.60	98.90	142.60	103.50	104.06	75.50	82.13	87.63	
Oct 1980	143.38	99.44	143.38	104.06	104.63	76.00	82.58	88.09	
Jan 1981	----->	104.63	153.45	111.60	110.45	80.33	87.40	93.12	
April 1981		105.19	154.28	112.20	111.63	80.85	87.88	93.61	
July 1981		105.47	154.69	112.50	100.13	81.11	88.35	94.09	
Oct 1981		106.31	155.93	113.40	100.88	81.90	89.06	94.82	
Jan 1982		139.02	138.03	119.76	114.45	95.10	102.73	107.09	
April 1982		140.70	139.75	121.48	116.13	96.90	104.64	109.00	
July 1982		149.08	147.65	128.31	123.04	103.85	112.03	115.71	
Oct 1982		148.85	147.42	128.08	122.82	103.52	111.74	115.42	
Jan 1983		161.75	167.96	140.50	136.13	122.61	129.20	132.17	
April 1983		161.51	167.70	140.25	135.88	122.40	129.20	132.17	
July 1983		163.69	170.04	142.50	138.11	124.78	131.24	134.17	
Oct 1983		163.69	170.04	142.50	138.11	124.62	131.24	134.17	
Jan 1984		172.71	179.58	150.79	146.21	131.99	141.51	141.51	
April 1984		172.20	179.03	150.26	145.69	131.53	140.91	140.91	
July 1984		171.94	178.75	149.99	145.43	131.53	140.91	140.91	
Oct 1984		172.20	179.03	150.26	145.69	131.53	140.91	140.91	
			AMALGAMATION EASTERN CAPE UNDERTAKING		AMALGAMATION NORTHERN & WESTERN CAPE UNDERTAKING				
Jan 1985			183.68		166.62	146.20	155.51	157.52	
April 1985			183.28		166.00	145.69	155.08	156.86	
July 1985			184.27		167.04	146.70	156.17	157.96	
Sept 1985			202.69		183.74	161.37	171.78	173.76	
Oct 1985			202.69		183.97	160.82	171.78	174.00	
		ALL REGIONS							
Jan 1986		198.71							
July 1986		218.45							
Jan 1987		244.70							
July 1987		244.70							
Jan 1988		269.28							
Jan 1989		296.22							
Jan 1990		337.70							
Jan 1991		364.72							
Oct 1991		401.20							







TABLE 36 - TARIFF C : EXAMPLE OF AN AVERAGE CUSTOMER ACCOUNT - c/kW.h

(ALTERNATIVE (a) - FLAT RATE TARIFF (SEE NOTES))											
UNDERTAKING	CAPE EASTERN	BORDER	ORANGE RIVER	CAPE WESTERN	CAPE NORTHERN	NATAL	EASTERN TVL	RAND & OFS	AVERAGE		
DATE											
Jan 1973	8.40	8.02	8.66	5.63	8.62	7.47	3.85	5.63	7.03		
April 1973	8.97	8.97	9.28	6.01	9.38	8.00	4.12	6.00	7.59		
July 1973	8.97	8.97	9.28	6.01	9.38	8.00	4.12	6.00	7.59		
Oct 1973	8.97	8.97	9.28	6.01	9.38	8.00	4.12	6.00	7.59		
Jan 1974	8.97	8.97	9.28	6.01	9.38	8.00	4.12	6.00	7.59		
April 1974	9.17	8.97	9.90	6.01	9.38	8.18	4.40	2.02	7.25		
July 1974	9.17	8.97	9.90	6.01	9.38	8.18	1.34	2.02	6.87		
Oct 1974	9.17	8.97	9.90	6.01	9.38	8.18	1.34	2.02	6.87		
Jan 1975	9.17	8.97	9.90	6.01	9.38	8.18	1.98	2.02	6.95		
April 1975	10.69	9.93	11.55	6.27	10.90	8.89	2.15	2.37	7.84		
July 1975	10.69	9.93	11.55	6.27	10.90	8.89	2.15	2.37	7.84		
Oct 1975	10.69	9.93	11.55	6.27	10.90	8.89	2.15	2.37	7.84		
Jan 1976	10.69	9.93	11.55	6.27	10.90	8.89	2.18	2.40	7.85		
April 1976	12.22	11.46	13.20	7.16	12.42	10.14	2.48	2.78	8.98		
July 1976	12.22	11.46	13.20	7.16	12.42	10.14	2.48	2.78	8.98		
Sept 1976	5.55	4.27	4.27	3.60	14.19	3.55	2.84	3.13	5.17		
Oct 1976	5.58	4.29	4.29	3.62	14.19	3.57	2.84	3.14	5.19		
Jan 1977	7.01	5.44	5.44	4.58	17.74	4.52	3.50	3.91	6.52		
April 1977	7.03	5.45	5.45	4.59	17.74	4.53	3.50	3.92	6.53		
July 1977	7.04	5.46	5.46	4.60	17.74	4.54	3.51	3.92	6.53		
Oct 1977	7.05	5.47	5.47	4.61	17.74	4.55	3.51	3.93	6.54		
Jan 1978	8.06	5.47	6.91	4.86	21.54	4.55	4.22	4.70	7.54		
April 1978	8.09	5.49	6.93	4.88	21.54	4.57	4.23	4.71	7.55		
July 1978	8.07	5.48	7.49	4.87	21.54	4.56	4.23	4.71	7.62		
Oct 1978	8.09	5.49	7.51	4.88	21.54	4.57	4.23	4.71	7.63		
Jan 1979	8.39	5.79	7.95	5.13	21.54	4.58	4.47	4.96	7.85		
April 1979	8.40	5.80	7.97	5.14	21.54	4.59	4.48	4.97	8.06		
July 1979	8.40	5.80	7.97	5.14	21.54	4.59	4.48	4.97	7.86		
Oct 1979	8.43	5.82	8.00	5.16	21.54	4.61	4.49	4.98	7.88		
Jan 1980	8.45	5.83	8.45	5.17	21.54	4.62	5.43	6.54	8.25		
April 1980	8.45	5.83	8.45	5.17	21.54	4.62	5.43	6.54	8.25		
July 1980	9.06	6.28	9.06	5.56	22.81	4.88	5.04	5.66	8.54		
Oct 1980	9.09	6.30	9.09	5.59	22.81	4.90	5.06	5.68	8.56		
Jan 1981	----->	6.62	9.71	5.98	23.82	5.17	5.35	5.99	7.83		
April 1981		6.64	9.74	6.01	23.82	5.19	5.37	6.01	8.97		
July 1981		6.65	9.76	6.02	5.88	5.20	5.39	6.03	6.42		
Oct 1981		6.69	9.81	6.05	5.91	5.23	5.42	6.06	6.45		
Jan 1982		7.94	7.96	6.48	6.68	6.04	6.23	6.83	6.88		
April 1982		8.01	8.03	6.54	6.75	6.11	6.31	6.91	6.95		
July 1982		8.49	8.49	6.92	7.15	6.56	6.76	7.34	7.39		
Oct 1982		8.48	8.48	6.91	7.14	6.54	6.75	7.33	7.38		
Jan 1983		9.22	9.67	7.58	7.92	7.36	7.82	8.41	8.28		
April 1983		9.21	9.66	7.57	7.92	7.35	7.82	8.41	8.28		
July 1983		9.30	9.75	7.66	8.00	7.44	7.90	8.49	8.36		
Oct 1983		9.30	9.75	7.66	8.00	7.42	7.90	8.49	8.36		
Jan 1984		9.81	10.30	8.11	8.48	7.87	8.83	8.83	8.89		
April 1984		9.79	10.28	8.09	8.46	7.86	8.80	8.80	8.87		
July 1984		9.78	10.27	8.08	8.45	7.86	8.80	8.80	8.86		
Oct 1984		9.79	10.28	8.09	8.46	7.86	8.80	8.80	8.87		
			AMALGAMATION EASTERN CAPE UNDERTAKING	AMALGAMATION NORTHERN & WESTERN CAPE UNDERTAKING							
Jan 1985			10.22		9.27	8.71	9.69	9.81	9.54		
April 1985			10.21		9.25	8.69	9.67	9.78	9.52		
July 1985			10.25		9.29	8.73	9.71	9.82	9.56		
Sept 1985			11.27		10.22	9.60	10.68	10.81	10.52		
Oct 1985			11.27		10.23	9.58	10.68	10.81	10.52		
ALL REGIONS											
Jan 1986	8.78										8.78
July 1986	9.65										9.65
Jan 1987	10.81										10.81
July 1987	10.83										10.83
Jan 1988	11.92										11.92
Jan 1989	13.11										13.11
Jan 1990	14.95										14.95
Jan 1991	16.14										16.14
Oct (VA) 1991	17.76										17.76

TABLE 37 - TARIFF D : EXAMPLE OF AN AVERAGE CUSTOMER ACCOUNT USING 1 500 kW.h

UNDERTAKING	BORDER	ORANGE RIVER	CAPE WESTERN	CAPE NORTHERN	NATAL	E ASTERN TVL	RAND & OFS	AVERAGE
DATE	R	R	R	R	R	R	R	R
Jan 1982	101.30	101.14	90.17	84.04	73.80	76.90	82.57	87.13
April 1982	102.31	102.17	91.20	85.05	74.88	78.04	83.71	88.20
July 1982	108.40	107.97	96.37	90.11	80.30	83.60	88.91	93.67
Oct 1982	108.27	107.84	96.23	89.98	80.11	83.42	88.74	93.51
Jan 1983	117.71	122.93	105.60	99.79	91.99	96.56	101.73	105.19
April 1983	117.56	122.77	105.45	99.64	91.86	96.56	101.73	105.08
July 1983	118.87	124.18	106.80	100.98	93.29	97.78	102.93	106.40
Oct 1983	118.87	124.18	106.80	100.98	93.03	97.78	102.93	106.37
Jan 1984	125.46	131.18	113.05	106.94	98.68	107.76	107.76	112.98
April 1984	125.15	130.85	112.73	106.63	98.41	107.40	107.40	112.65
July 1984	125.00	130.68	112.57	106.47	98.41	107.40	107.40	112.56
Oct 1984	125.15	130.85	112.73	106.63	98.41	107.40	107.40	112.65
		AMALGAMATION		AMALGAMATION				
		EASTERN CAPE		NORTHERN & WESTERN CAPE				
		UNDERTAKING		UNDERTAKING				
Jan 1985		133.65		124.51	109.23	118.32	119.81	121.11
April 1985		133.42		124.13	108.93	118.06	119.42	120.79
July 1985		134.01		124.76	109.53	118.71	120.08	121.42
Sept 1985		147.21		137.03	120.49	130.58	132.08	133.48
Oct 1985		147.21		137.17	120.15	130.58	132.23	133.47
		ALL REGIONS						
Jan 1986		171.15						171.15
July 1986		188.18						188.18
Jan 1987		210.76						210.76
July 1987		210.76						210.76
Jan 1988		231.88						231.88
Jan 1989		255.10						255.10
Jan 1990		290.82						290.82
Jan 1991		314.08						314.08
Oct (VAT) 1991		345.50						345.50

## **SECTION 6**

### **CONCLUSION & REFERENCES**

The Eskom tariff structures have undergone far-reaching changes over the past 20 years. The field of pricing policy cannot afford to be static and must be responsive to market needs. Eskom's Pricing Policy Department is striving to address the customers' needs in various ways. As further knowledge about electricity pricing is acquired, and more information becomes available regarding pricing practices of other electricity supply utilities around the world, there will be further refinements to the Eskom tariff structures.

#### **ACKNOWLEDGEMENT**

Many thanks are extended to Mr R J Baasch for his kind assistance in compiling this Tariff History.

Enquiries:	Hendrik Barnard	800-4519
	Shirley Mc Dougall	800-3058

#### **REFERENCES**

- Econostat 91
- Eskom Annual Reports
- Eskom Statistical Yearbook 1990
- Eskom Internal Quarterly Publication of Tariffs (1982 - 1987)
- Government Gazette annual publications of Eskom Schedule of Standard Prices (1973 to 1989)
- Reports written by R J Baasch during 1985 regarding the De Villiers Commission of Inquiry