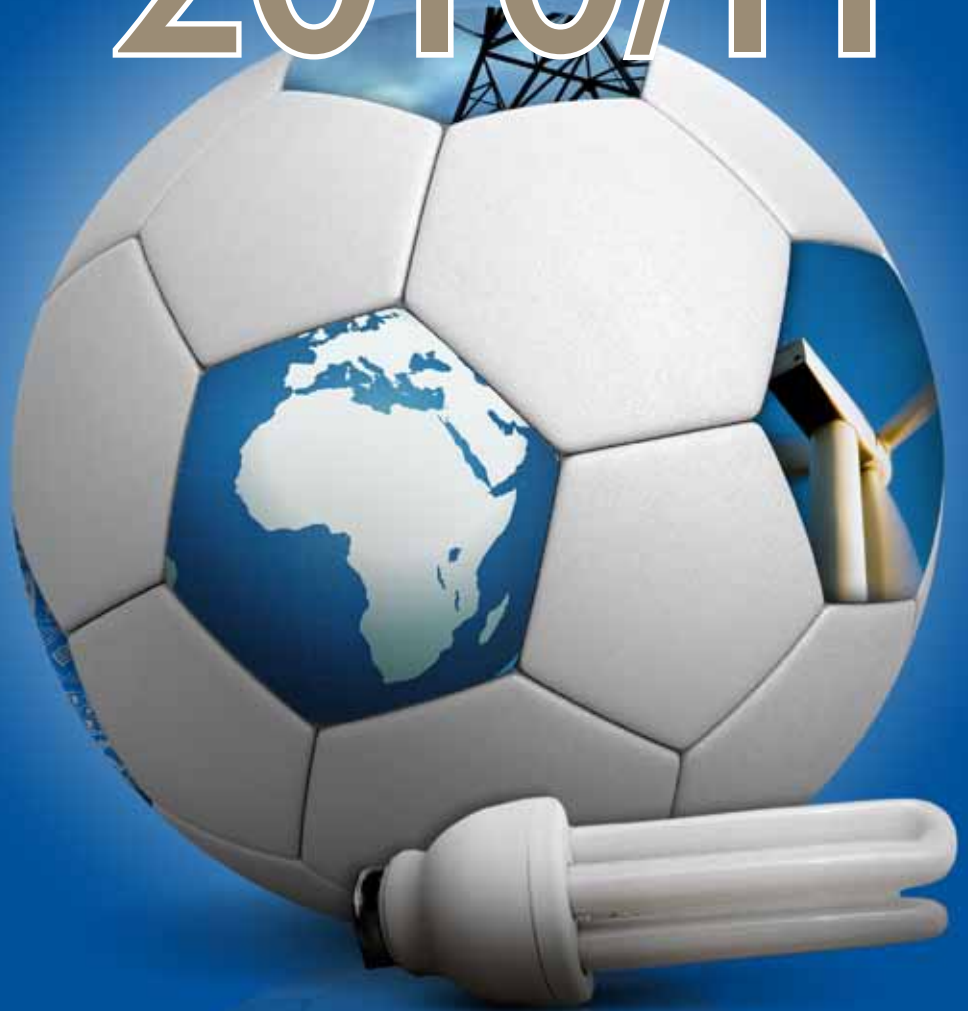


Tariffs & Charges 2010/11



Charges for non-local authorities effective from 1 April 2010 to 31 March 2011
Charges for local authorities effective from 1 July 2010 to 30 June 2011





Contents

1. Tariff rate component summary	3
2. Customer contact numbers	4
3. Eskom's customer service charter	5
4. Foreword	6
5. Abbreviations	8
6. Definitions	8
7. Charges that may be applicable to tariffs	11
8. Urban_p tariffs (non-local authority/ local authority)	
8.1 NIGHTSAVE URBAN Large	
Electricity tariff for high load factor urban _p customers with an NMD greater than 1 MVA	13
8.2 NIGHTSAVE URBAN Small	
Electricity tariff for high load factor urban _p customers with an NMD from 25 kVA up to 1 MVA	16
8.3 MEGAFLEX	
TOU electricity tariff for urban _p customers with an NMD greater than 1 MVA that are able to shift load	19
8.4 MINIFLEX	
TOU electricity tariff for urban _p customers with an NMD from 25 kVA up to 5 MVA that are able to shift load	22
8.5 BUSINESSRATE	
Tariff for small businesses, governmental institutions or similar supplies in urban _p areas with an NMD up to 100 kVA	25
8.6 Public Lighting	
Electricity tariff for public lighting or similar supplies where Eskom provides a supply for, and maintains, any street lighting or similar public lighting	27
9. Residential tariffs (non-local authority/local authority)	
9.1 HOMEPower BULK	
Electricity tariff for residential bulk supplies, typically sectional title developments and multiple housing units, in urban _p areas connected prior to 1 January 2004	29

9.2	HOMEPower STANDARD	Electricity tariff suitable for residential customers, in urban _p areas with an NMD of up to 100 kVA	30
9.3	HOMElight	Suite of electricity tariffs that provides a subsidy to low-usage for single-phase residential supplies in urban _p areas	32
9.4	HOMEflex	A TOU electricity tariff suitable for medium-to-high usage residential customers in urban _p areas with an NMD of up to 100 kVA	34
10.	Rural_p tariffs (non-local authority/ local authority)		
10.1	NIGHTsave RURAL	Electricity tariff for high load factor rural _p customers with an NMD from 25 kVA with a supply voltage \leq 22 kV (or 33 kV where designated by Eskom as rural)	35
10.2	RURAFlex	TOU electricity tariff for rural _p customers with dual and three-phase supplies with an NMD from 25 kVA with a supply voltage \leq 22 kV (or 33 kV where designated by Eskom as rural)	38
10.3	LANDrate	Electricity tariff for rural _p customers with an NMD up to 100kVA with a supply voltage of \leq 500V	41
10.4	LANDlight	Electricity tariff that provides a subsidy to low-usage single-phase supplies in rural _p areas, limited to 20A	43
11.	Appendices		
A.	Transmission surcharge		45
B.	Treatment of public holidays		46
C.	Eskom's defined time of use periods		47
D.	Connection charges		48
E.	Application of NMD rules		49
F.	Eskom's average price adjustment		51
G.	Pricing of electricity		53
H.	Billing		54

Tariff rate component summary

NOTE: A security deposit may be payable. For new connections or additional capacity, connection charges will be payable in addition to the tariffs.

	Tariff	Supply size	Service charge	Admin charge	Transmission Network charge	Distribution Network charge	Energy Demand charge	(Active) energy charge: Non-TOU	(Active) energy charge: TOU	Reactive energy charge	Electrification and rural subsidy	Environmental levy
Urban	NIGHTSAVE Urban Small	≥ 25 kVA and ≤ 1 MVA	R/day	R/day	R/kVA ^{V,T}	R/kVA ^{4,5,V}	R/kVA ^{V,T}	c/kWh ^{V,T,S}			c/kWh	c/kWh
	NIGHTSAVE Urban Large	> 1 MVA	R/day	R/day	R/kVA ^{V,T}	R/kVA ^{4,5,V}	R/kVA ^{V,T}	c/kWh ^{V,T,S}			c/kWh	c/kWh
	MEGAFLEX	> 1 MVA	R/day	R/day	R/kVA ^{V,T}	R/kVA ^{4,5,V}			c/kWh ^{V,T,S}	c/kvarh ⁵	c/kWh	c/kWh
	MINIFLEX	≥ 25 kVA and ≤ 5 MVA	R/day	R/day		R/kVA ^{4,5,V}			c/kWh ^{V,T,S}	c/kvarh ⁵	c/kWh	c/kWh
	PUBLIC LIGHTING	No limit						c/kWh				c/kWh
	BUSINESSRATE 1	25 kVA	R/day ⁶			R/day		c/kWh				c/kWh
	BUSINESSRATE 2	50 kVA	R/day ⁶			R/day		c/kWh				c/kWh
Residential	BUSINESSRATE 3	100 kVA	R/day ⁶			R/day		c/kWh				c/kWh
	BUSINESSRATE 4	16 kVA ¹						c/kWh				c/kWh
	HOMEPOWER Bulk ⁺	No limit						c/kWh ^V				c/kWh
	HOMEPOWER 1	25 kVA						c/kWh				c/kWh
	HOMEPOWER 2	50 kVA						c/kWh				c/kWh
	HOMEPOWER 3	100 kVA						c/kWh				c/kWh
	HOMEPOWER 4	16 kVA ¹						c/kWh				c/kWh
Rural	HOMELIGHT 1	60 A or 20 A						c/kWh				c/kWh
	HOMELIGHT 2	60 A or 20 A						c/kWh				c/kWh
	NIGHTSAVE Rural	≥ 25 kVA ²	R/day	R/day	R/kVA ^{4,V,T}	R/kVA ^{4,V,T}	R/kVA ^{V,T}	c/kWh ^{V,T,S}				c/kWh
	RURAFLEX	≥ 25 kVA ^{2/3}	R/day	R/day					c/kWh ^{V,T,S}	c/kvarh ⁵		c/kWh
	LANDRATE 1	16 kVA ¹ / 32 kVA ² / 25 kVA ³	R/day ⁶			R/day		c/kWh				c/kWh
	LANDRATE 2	64 kVA ² / 50 kVA ³	R/day ⁶			R/day		c/kWh				c/kWh
	LANDRATE 3	100 kVA ^{2/3}	R/day ⁶			R/day		c/kWh				c/kWh
Rural	LANDRATE 4	16 kVA ¹				R/day		c/kWh				c/kWh
	LANDRATE Dx	10 A	R/day ^{6**}					c/kWh				c/kWh
	LANDLIGHT	20 A						c/kWh				c/kWh

TOU Time-of-use. (a tariff that has different energy rates for different time periods and seasons)

- + Not available to new supplies
- 1 Single-phase
- 4 Network access charge (NAC)
- 2 Dual-phase
- 5 Network demand charge (NDC)
- 3 Three-phase
- 6 Transmission network charge

* The service charge for these tariffs includes the administration cost components, namely meter reading, billing and meter capital.

** The service charge for this tariff includes the administration, network and energy cost components.

*** All residential tariffs have the same rates and an inclining block rate structure.

Customer contact numbers

Customers can contact the Eskom Call-Centre for customer services such as account queries, applications for new connections, transfer of existing accounts and termination of accounts

Eskom has introduced an easy-to-remember national ShareCall number:

- dial 08600ESKOM on a phone with an alphanumeric keypad; or
- dial 0860037566 if your phone does not have an alphanumeric keypad

Contact centre (CC)	Telephone	Fax	E-mail
Bellville	0860 037 566	021 915 2867	western@eskom.co.za
Bloemfontein	0860 037 566	051 404 2627	north.western@eskom.co.za
Braamfontein	0860 037 566	011 507 5756	central@eskom.co.za
East London	0860 037 566	043 703 2929	southern@eskom.co.za
Polokwane	0860 037 566	015 299 0400	northern@eskom.co.za
Westville	0860 037 566	031 204 5850	eastern@eskom.co.za
Witbank	0860 037 566	013 693 3886	northern@eskom.co.za

Customers can now also send an SMS message stating their customer service requirement to any of the following numbers:

Vodacom 082 941 3707

MTN 083 647 1951

Cell C 084 655 5778



For the latest contact details and tariff information visit our web site at
www.eskom.co.za/tariffs

Eskom's customer service charter

Our customers have the right:

- to accurate measurement of consumption;
- to error-free bills;
- to be treated with respect;
- to experience excellent treatment in terms of Eskom's electricity supply agreement;
- to be dealt with promptly and efficiently;
- to be treated fairly;
- to have their property treated with respect;
- to the confidentiality of their information;
- to one-stop service without referral;
- to quality of supply in terms of negotiated agreement; and
- to be involved in issues affecting them.

Visit our web site at www.eskom.co.za for more information on Eskom's service levels.

Go to:

- > Customer Services
 - > Customer Service Info
 - > Customer Service Levels

On 24 February 2010, the National Energy Regulator of South Africa (NERSA) approved an annual average price increase on the Eskom revenue of 24,8% for the Multi Year Price Determination 2 (MYPD2) period (2010/11 to 2012/13) that will allow Eskom to recover revenue of R85,180 billion calculated from the annual revenues and sales volumes between the 2009/10 and 2010/11 financial years.

The NERSA decision includes the implementation of inclining block tariffs to replace all Eskom's residential tariffs, i.e. Homelight and Homepower. The objective of the inclining block tariff is to provide protection for lower usage residential customers against high price increases.

This structural change to implement inclining block tariffs as determined by NERSA resulted in an average **reduction** in price to Eskom's Homelight residential tariffs that in turn cause a shortfall in revenue to Eskom. As per NERSA's determination, the shortfall (cross-subsidy) of R1,32 billion is to be dealt with in the following manner:

- Must be recovered only from Eskom-direct customers on Megaflex, Miniflex, Nightave Urban (Large and Small) and Businessrate tariffs. These customers will see an additional 4,8% price increase on the NERSA-approved average price increase of 24,8%
- The tariffs applicable to local authorities and the non-local authority rural tariffs, Landrate, Ruraflex, Landlight and Nightsave Rural are excluded from having to pay this cross-subsidy.

Eskom will be implementing the inclining block tariff for its conventionally metered residential customers on 1 April 2010. For its prepayment residential customers the new tariff structure will only be implemented at a later

date once the prepayment vending system can accommodate inclining block tariffs. As an interim solution a weighted average price **reduction** will be applied to the affected tariffs to achieve a similar objective. Note: the impact of the weighted average price reduction is the same for both prepaid and billed customers.

The increase applied to the 2009/10 tariff rates is **not** the same as the annual average price increase announced by NERSA for the following reasons:

- The environmental levy charge was included in the allowed revenue but does not increase with the price increase. It was adjusted to simplify understanding and ease communication for the standard tariff consumers. Customers will now be charged 2 c/kWh on the total kWh used and not 1,97 c/kWh as per 2009/10 tariff book.
- The price increase for 2009/10 was only implemented on 1 July 2009 and therefore did not reflect an annual 12 month tariff. This meant that the average price for the first 3 months of 2009 (1 April 2009 – 31 June 2009) was lower than the average price calculated over the next 9 months (1 July 2009 to 31 March 2010).

Customers will therefore experience a lower percentage increase compared to the rates that customers see in the 2009/10 Eskom tariff book than if they compare it to the annual average increase allowed by NERSA over the full 12 months of the Eskom financial year:

- The annual increase to municipal bulk supplies, in compliance with the MFMA, will only be effective from 1 July 2010, resulting in a higher price increase for the remaining 9 months of the Eskom financial year.

- The increases per tariff also had to take into account NERSA's introduction of an inclining block tariff, which resulted in a reduction in the average price for residential tariffs.

Given the all of the above issues, **the respective average percentage increases** (including the environmental levy) on the tariff rates are:

Tariffs	% Increase	Reasons for deviation from average increase
LOCAL AUTHORITY TARIFFS		
Local Authority Tariffs	28,9%	<ul style="list-style-type: none"> In compliance with the MFMA, effective from 1 July 2010
NON-LOCAL AUTHORITY TARIFFS		
Urban tariffs		
<ul style="list-style-type: none"> Megaflex, Miniflex, Nightsave Urban Businessrate Public Lighting 	23,5%	<ul style="list-style-type: none"> The introduction of inclining block tariffs resulted in an under-recovery of revenue of R1,32 billion, which as per NERSA is to be recovered from these tariffs. These tariffs were impacted on average by 1.5 c/kWh or 4.8% which translates into an increase of 23.5% on the previous tariffs effective 1 July 2009 and an annual average impact of 28% (comparing the twelve months amount paid in 2009/10 against the amount to be paid in 2010/11).
Rural tariffs		
<ul style="list-style-type: none"> Ruraflex Nightsave Rural Landrate Landlight 	18,7%	<ul style="list-style-type: none"> The average increase on all tariff rates, including the levy as per NERSA entails no recovery of cross-subsidies from these tariffs. The annual average price increase is 24,8% (comparing the twelve months amount paid in 2009/10 against the amount to be paid in 2010/11).
Residential tariffs		
<ul style="list-style-type: none"> Homepower Homelight 	7% -9,1%	<ul style="list-style-type: none"> The inclining block rates will be applicable to the Non-local authority Homepower and Homelight tariffs; and weighted average rates to the above tariffs for customers with pre-payment meters.

The details of Eskom's 2010/11 tariff rates including impact and tariff comparison modelling tools can be found at the following web address www.eskom.co.za/tariffs.

Deon Conradie - SENIOR MANAGER (Electricity Pricing)

Abbreviations

<	less than	kWh	kilowatt-hour
≤	less than or equal to	MFMA	Municipal Finance Management Act
>	greater than	MVA	megavolt-ampere
≥	greater than or equal to	MYPD	Multi-Year Price Determination
A	ampere	N/A	not applicable
c	cents	NERSA	National Energy Regulator of South Africa
c/kvarh	cents per reactive kilovolt-ampere-hour	NMD	notified maximum demand
c/kWh	cents per kilowatt-hour	PF	power factor
CPI	consumer price index	R	rand
ERS	electrification and rural subsidy	R/kVA	rand per kilovolt-ampere
GWh	gigawatt-hour	TOU	time of use or time-of-use
km	kilometre	V	volt
kVA	kilovolt-ampere	VAT	value-added tax
kvarh	reactive kilovolt-ampere-hour	W	watt
kV	kilovolt		

Definitions

Account is a grouping of premises/points of delivery according to the same voltage or location.

(Active) energy charge is a charge for each unit of energy consumed, typically charged for as c/kWh.

Administration charge is a charge to cover the cost of the administration of the account, such as meter reading, billing and meter capital, and is payable whether electricity is consumed or not.

Annual utilised capacity is the higher of the customer's notified maximum demand (NMD) or maximum demand (MD), measured in kVA, and registered during a rolling 12-month period.

Billing is the process of producing and delivering a bill (an account or invoice) for payment by a customer, calculated from the tariff schedule or as per agreement between the parties (eg Special Pricing Agreements) and, for the majority of customers, the consumption measured and recorded by the metering system.

Billing period is the duration of the period from one meter reading date and time (actual or estimated) to the next meter reading date and time.

Bulk supply is a single point of supply to an intermediate distributor or reseller for resale to other customers.

Capital cost is the expenditure on plant, equipment and other resources required in order to provide capacity. A connection charge will be payable as an upfront payment in addition to the tariff for new connections or additional capacity.

Chargeable demand is the highest average demand measured in kVA in a billing month during the chargeable time periods specified for each tariff. For the time of use tariffs the chargeable period is during the peak and standard periods and for Nightsave during Nightsave's peak periods.

Chargeable time periods are the time periods when the demand registered will be charged for. The chargeable time periods differ and are described with each of the respective tariffs.

Connection charge is the charge recouped from the customer for the cost of providing new or additional capacity (irrespective of whether new investment is required or not), recovered through tariff charges.

Note: It is payable in addition to the tariff charges as an upfront payment.

Connection fee is a standard minimum upfront fee payable by the customer towards the cost of a new connection. Refer to Appendix E (Table 1).

Conventional metered supplies where a meter's consumption is read and captured on the billing system for the purpose of generating a bill.

Cost-reflective tariffs include all the unique cost components of providing an electricity supply for a specific customer.

Note: It is based on the real economic costs.

Distribution network access charge recovers Distribution network costs, is fixed on an annual basis and is charged on the greater of the NMD or annual utilised capacity.

Distribution network demand charge recovers Distribution network costs, varies on a monthly basis and is charged on the chargeable demand.

Dual-phase supply is a supply at a declared phase-to-neutral voltage of 230 V where the phases are vectorially 180 degrees apart and cannot be paralleled.

Electrification and rural subsidy is a charge transparently indicating the contribution towards socio-economic subsidies.

Energy demand charge is a charge per premise that recovers peak energy costs, and is seasonally differentiated and based on the chargeable demand.

Environmental Levy is a government levy charged to non-renewable generators based on the energy they produce.

Key customer is a customer identified by Eskom as requiring special services, or a customer that consumes more than 100 GWh per year on contiguous sites.

Licensed area of supply is an area for which the National Energy Regulator of South Africa (NERSA) has issued a licence to Eskom under the provisions of the Energy Regulation Act of August 2006, as amended, for the supply of electricity in that area. Eskom's tariffs are only applicable where Eskom is licensed to supply.

Local authority supplies are supplies to municipal bulk points.

Loss Factors recover technical energy losses on the transmission and distribution systems. The Distribution loss factors differ per voltage category, per rural and urban categories. Transmission loss factors are based on the current Eskom transmission zones.

Maximum demand is the highest averaged demand measured in kVA or kW during any integrating period within a designated billing period. *Note: The integrating period is normally 30 minutes and the designated billing period refers to all time periods.*

Monthly utilised capacity is the higher of the customer's notified maximum demand (NMD) or maximum demand, measured in kVA or kW, registered during the billing month.

Network charge is a charge to recover network costs (including capital operations, maintenance and refurbishment) associated with the provision of network capacity required and reserved by the customer.

Non-local authority supplies are supplies to Eskom direct customers excluding municipal supplies.

Notified maximum demand (NMD) is the maximum demand notified in writing by the customer and accepted by Eskom. *Note: The notification of demand is governed by the NMD rules.*

Power factor is the ratio of kW to kVA measured over the same integrating period.

Premise or point of delivery means either a single point of supply or a specific group of points of supply located within a single substation, at which electricity is supplied to the customer at the same declared voltage and tariff. *Note: This can be a metering or summation point.*

Prepayment meter is an electricity meter that can (by means such as tokens, cards, keypads) be operated and controlled to allow the flow of a pre-purchased amount of energy in an electrical circuit.

Public Holiday means any day listed in the table in this annexure setting out the Public Holidays in the Republic of South Africa and/or any other day announced as a Public Holiday by the Government of the Republic of South Africa.

Rate components are the different charges associated with a tariff, for example the energy charge.

Reactive energy charge is a charge based on the reactive energy used.

Rural areas refers to rural as classified for pricing purposes.

Security deposit is a once-off refundable payment or guarantee provided by a customer to Eskom as security for the due payment of electricity accounts.

Service charge is a fixed charge payable per account to recover service-related costs. Charged per account and is based on the sum of the monthly utilised capacity of all premises linked to an account.

Single-phase supply is a 50 Hz AC supply at 230 V rms phase-to-neutral. The neutral carries the full load current.

Tariff is a combination of charging parameters applied to recover measured quantities such as consumption and capacity costs, as well as unmeasured quantities such as service costs. *Note: The tariff rate, multiplied by the measured service quantities, recovers the cost of service.*

Three-phase supply is a 50 Hz AC supply at 230 V rms phase-to-neutral; 400 V rms phase-to-phase (120° vector phase displacement).

Time-of-use (TOU) tariff is a tariff that has different energy rates for the same tariff component during different time periods and seasons in order to reflect the shape of Eskom's long-run marginal energy cost of supply at different times more accurately.

Transmission network charge recovers Transmission network cost and is fixed on an annual basis and is charged on the annual utilised capacity.

Transmission Zone is the geographic differentiation applicable to Transmission Network Charges and Loss Factors, to indicate the costs associated with the transmission of energy over long distances.

Urban areas refer to urban as classified for pricing purposes.

Utilised capacity refers to annual utilised capacity.

Charges that may be applicable to tariffs

- (a) A **service charge**: payable every month for each electricity account based on a daily rate (in Rands) and the number of days in the month.
- (b) An **administration charge**: payable on each point of delivery, which is based on a daily rate (in Rands) and the number of days in the month.
- (c) A **distribution network demand charge**: payable for the chargeable demand supplied during peak (and standard – for Megaflex) periods per point of delivery per month.
- (d) A **distribution network access charge**: payable each month, based on the greater of the NMD or the annual utilised capacity of each point of delivery.
- (e) A **network charge**: payable each month whether electricity is used or not, based on the daily rate (in Rands) and the number of days in the month.
- (f) A **transmission network charge**: payable each month, based on the annual utilised capacity of each point of delivery.
- (g) Non-TOU **active energy charge**: payable per kWh of electrical energy used in the month. This may be a single rate or an inclining block rate that has different charges depending on the monthly consumption.
- (h) A TOU **active energy charge**: payable per kWh of electricity energy used in the month. The charges for time of use tariffs differ for the high-demand (June - August) and low-demand (September - May) seasons. These charges also differ by the time-of-day in peak, standard and off-peak rates.
- (i) **Loss factors**: The active energy charges are shown inclusive of losses at the applicable loss factor which differ by the voltage category and transmission zone. The loss factors are given in the tables below.

Distribution loss factors

Voltage	Urban	Rural
< 500V	1.1116	1.1399
≥ 500V and < 66 kV	1.0758	1.1104
≥ 66 kV and ≤ 132 kV	1.0365	N/A
> 132 kV	1.0000	N/A

Transmission loss factors

Distance from Johannesburg	Zone	Loss factor
0 - 300 km	0	1.0096
301 - 600 km	1	1.0197
601 - 900 km	2	1.0299
> 900 km	3	1.0402

- (j) An **energy demand charge**: payable on the chargeable demand registered during peak periods in the month. The energy demand charges, differ for the high-demand and low-demand seasons and are only applicable to the Nightsave Urban Large, Nightsave Urban Small and Nightsave Rural tariffs.

Charges that may be applicable to tariffs *continued...*

- (k) A **reactive energy charge**: applicable for every kilovar-hour (kVAh) registered in excess of 30% of the kWh used during peak and standard periods. The excess reactive energy is only applicable during the high demand season (June – August). Only applicable to Megaflex, Miniflex and Ruraflex tariffs. Refer to the applicable tariff for the methodology applied to determine the excess reactive energy.
- (l) The **electrification and rural subsidy (ERS)**: a c/kWh charge payable on the total active energy.
- (m) An **environmental levy charge**: a c/kWh charge reflecting the cost of the Environmental Levy payable by Eskom. VAT is payable on this charge as this is a tariff charge.
- (n) An **upfront connection charge/fee**: is payable in addition to the tariff for new connections or additional capacity.



NIGHTSAVE Urban Large

Electricity tariff for high load factor urban_p customers with an NMD greater than 1 MVA with the following charges:

- seasonally differentiated c/kWh **active energy charge**; based on the voltage of the supply and the transmission zone
- seasonally differentiated **energy demand charge** based on the voltage of the supply, the chargeable demand and the transmission zone; applicable during peak periods only
- a R/kVA/month **transmission network charge** based on the voltage of the supply, the transmission zone and the utilised capacity applicable during all time periods
- a R/kVA/month **distribution network access charge** based on the voltage of the supply and the utilised capacity applicable during all time periods
- a R/kVA/month **distribution network demand charge** based on the voltage of the supply and the chargeable demand applicable during peak periods only
- a c/kWh **electrification and rural subsidy**, contribution to cross-subsidies to rural and Homelight tariffs, applied to the total active energy supplied in the month
- a c/kWh **environmental levy charge** charged on the total kWh in the month
- a R/day **service charge** based on monthly utilised capacity of each premise linked to an account
- a R/day **administration charge** based on monthly utilised capacity of each premise linked to an account

For a description of the charges - refer pages 11 & 12

Non-Local Authority & Local Authority Urban Tariffs continued...

NIGHTSAVE Urban Large Non-Local Authority Rates

Transmission zone	Voltage	Active energy charge (c/kWh)				Energy demand charges (R/kVA/m)				Transmission network charges (R/kVA/m)	
		High demand season (Jun-Aug)		Low demand season (Sep-May)		High demand season (Jun-Aug)		Low demand season (Sep-May)		VAT excl.	VAT incl.
		VAT excl.	VAT incl.	VAT excl.	VAT incl.	VAT excl.	VAT incl.	VAT excl.	VAT incl.		
≤ 300km	< 500V	32.10	36.59	22.07	25.16	R96.74	R110.28	R13.52	R15.41	R3.67	R4.18
	≥ 500V & < 66kV	31.12	35.48	21.41	24.41	R93.63	R106.74	R13.09	R14.92	R3.35	R3.82
	≥ 66kV & ≤ 132kV	30.02	34.22	20.67	23.56	R90.22	R102.85	R12.61	R14.38	R3.26	R3.72
	> 132kV	29.03	33.09	19.99	22.79	R87.03	R99.21	R12.16	R13.86	R4.12	R4.70
> 300km and ≤ 600km	< 500V	32.42	36.96	22.28	25.40	R97.73	R111.41	R13.65	R15.56	R3.69	R4.21
	≥ 500V & < 66kV	31.42	35.82	21.60	24.62	R94.58	R107.82	R13.21	R15.06	R3.38	R3.85
	≥ 66kV & ≤ 132kV	30.31	34.55	20.87	23.79	R91.12	R103.88	R12.73	R14.51	R3.29	R3.75
	> 132kV	29.29	33.39	20.18	23.01	R87.91	R100.22	R12.28	R14.00	R4.17	R4.75
> 600km and ≤ 900km	< 500V	32.73	37.31	22.49	25.64	R98.73	R112.55	R13.79	R15.72	R3.74	R4.26
	≥ 500V & < 66kV	31.71	36.15	21.80	24.85	R95.53	R108.90	R13.35	R15.22	R3.41	R3.89
	≥ 66kV & ≤ 132kV	30.60	34.88	21.06	24.01	R92.03	R104.91	R12.86	R14.66	R3.32	R3.78
	> 132kV	29.58	33.72	20.37	23.22	R88.80	R101.23	R12.40	R14.14	R4.22	R4.81
> 900km	< 500V	33.04	37.67	22.69	25.87	R99.70	R113.66	R13.93	R15.88	R3.75	R4.28
	≥ 500V & < 66kV	32.01	36.49	22.01	25.09	R96.49	R110.00	R13.47	R15.36	R3.45	R3.93
	≥ 66kV & ≤ 132kV	30.90	35.23	21.25	24.23	R92.97	R105.99	R12.99	R14.81	R3.33	R3.80
	> 132kV	29.86	34.04	20.55	23.43	R89.70	R102.26	R12.52	R14.27	R4.25	R4.85

Electrification and rural subsidy (c/kWh) All Seasons		Environmental levy charge (c/kWh) All Seasons	
VAT excl.	VAT incl.	VAT excl.	VAT incl.
3.09	3.52	2.00	2.28

Monthly utilised capacity	Service charge (R/Account/day)		Administration charge (R/POD/day)	
	VAT excl.	VAT incl.	VAT excl.	VAT incl.
> 1 MVA	R83.62	R95.33	R37.69	R42.97
Key customers	R1,638.73	R1,868.15	R52.33	R59.66

Distribution network charges				
Voltage	Network access charge (R/kVA/m)		Network demand charge (R/kVA/m)	
	VAT excl.	VAT incl.	VAT excl.	VAT incl.
< 500V	R7.32	R8.34	R13.88	R15.82
≥ 500V & < 66kV	R6.72	R7.66	R12.73	R14.51
≥ 66kV & ≤ 132kV	R6.50	R7.41	R12.34	R14.07
> 132kV	R0.00	R0.00	R11.12	R12.68

Non-Local Authority & Local Authority Urban Tariffs

continued...

NIGHTSAVE Urban Large Local Authority Rates

Transmission zone	Voltage	Active energy charge (c/kWh)				Energy demand charges (R/kVA/m)				Transmission network charges (R/kVA/m)	
		High demand season (Jun-Aug)		Low demand season (Sep-May)		High demand season (Jun-Aug)		Low demand season (Sep-May)		VAT excl.	VAT incl.
		VAT excl.	VAT incl.	VAT excl.	VAT incl.	VAT excl.	VAT incl.	VAT excl.	VAT incl.		
≤ 300km	< 500V	33.69	38.41	23.16	26.40	R101.50	R115.71	R14.18	R16.17	R3.84	R4.38
	≥ 500V & < 66kV	32.64	37.21	22.45	25.59	R 98.23	R111.98	R13.73	R15.65	R3.51	R4.00
	≥ 66kV & ≤ 132kV	31.50	35.91	21.69	24.73	R 94.64	R107.89	R13.24	R15.09	R3.42	R3.90
	> 132kV	30.45	34.71	20.98	23.92	R 91.30	R104.08	R12.76	R14.55	R4.33	R4.94
> 300km and ≤ 600km	< 500V	34.00	38.76	23.37	26.64	R102.53	R116.88	R14.33	R16.34	R3.88	R4.42
	≥ 500V & < 66kV	32.96	37.57	22.66	25.83	R 99.21	R113.10	R13.87	R15.81	R3.54	R4.04
	≥ 66kV & ≤ 132kV	31.80	36.25	21.89	24.95	R 95.59	R108.97	R13.35	R15.22	R3.44	R3.92
	> 132kV	30.74	35.04	21.18	24.15	R 92.23	R105.14	R12.88	R14.68	R4.37	R4.98
> 600km and ≤ 900km	< 500V	34.33	39.14	23.59	26.89	R103.57	R118.07	R14.48	R16.51	R3.92	R4.47
	≥ 500V & < 66kV	33.28	37.94	22.88	26.08	R100.22	R114.25	R14.01	R15.97	R3.58	R4.08
	≥ 66kV & ≤ 132kV	32.10	36.59	22.09	25.18	R 96.56	R110.08	R13.50	R15.39	R3.48	R3.97
	> 132kV	31.04	35.39	21.36	24.35	R 93.16	R106.20	R13.02	R14.84	R4.43	R5.05
> 900km	< 500V	34.66	39.51	23.81	27.14	R104.62	R119.27	R14.62	R16.67	R3.94	R4.49
	≥ 500V & < 66kV	33.59	38.29	23.10	26.33	R101.23	R115.40	R14.15	R16.13	R3.62	R4.13
	≥ 66kV & ≤ 132kV	32.42	36.96	22.30	25.42	R 97.53	R111.18	R13.62	R15.53	R3.49	R3.98
	> 132kV	31.32	35.70	21.56	24.58	R 94.10	R107.27	R13.15	R14.99	R4.46	R5.08

Electrification and rural subsidy (c/kWh) All Seasons		Environmental levy charge (c/kWh) All Seasons	
VAT excl.	VAT incl.	VAT excl.	VAT incl.
3.24	3.69	2.00	2.28

Monthly utilised capacity	Service charge (R/Account/day)		Administration charge (R/POD/day)	
	VAT excl.	VAT incl.	VAT excl.	VAT incl.
> 1 MVA	R87.73	R100.01	R39.53	R45.06
Key customers	R1,719.26	R1,959.96	R54.90	R62.59

Voltage	Distribution network charges			
	Network access charge (R/kVA/m)		Network demand charge (R/kVA/m)	
	VAT excl.	VAT incl.	VAT excl.	VAT incl.
< 500V	R7.68	R8.76	R14.57	R16.61
≥ 500V & < 66kV	R7.04	R8.03	R13.35	R15.22
≥ 66kV & ≤ 132kV	R6.82	R7.77	R12.94	R14.75
> 132kV	R0.00	R0.00	R11.67	R13.30

NIGHTSAVE Urban Small

Electricity tariff for high load factor urban_p customers with an NMD from 25 kVA to 1 MVA with the following charges:

- seasonally differentiated c/kWh **active energy charge** based on the voltage of the supply and the transmission zone
- seasonally differentiated **energy demand charge** based on the voltage of the supply, the chargeable demand and the transmission zone; applicable during peak periods only
- a R/kVA/month **transmission network charge** based on the voltage of the supply, the transmission zone and the utilised capacity applicable during all time periods
- a R/kVA/month **distribution network access charge** based on the voltage of the supply and the utilised capacity applicable during all time periods
- a R/kVA/month **distribution network demand charge** based on the voltage of the supply and the chargeable demand applicable during peak periods only
- a c/kWh **electrification and rural subsidy** contribution to cross-subsidies to rural and Homelight tariffs, applied to the total active energy supplied in the month
- a c/kWh **environmental levy charge**, applied to the total active energy supplied in the month
- a R/day **service charge** based on monthly utilised capacity of each premise linked to an account
- a R/day **administration charge** based on monthly utilised capacity of each premise linked to an account



For a description of the charges - refer pages 11 & 12

Non-Local Authority & Local Authority Urban Tariffs *continued...*

NIGHTSAVE Urban Small Non-Local Authority Rates

Transmission zone	Voltage	Active energy charge (c/kWh)				Energy demand charges (R/kVA/m)				Transmission network charges (R/kVA/m)	
		High demand season (Jun-Aug)		Low demand season (Sep-May)		High demand season (Jun-Aug)		Low demand season (Sep-May)		VAT excl.	VAT incl.
		VAT excl.	VAT incl.	VAT excl.	VAT incl.	VAT excl.	VAT incl.	VAT excl.	VAT incl.		
≤ 300km	< 500V	33.88	38.62	22.44	25.58	R67.94	R77.45	R8.76	R 9.99	R3.67	R4.18
	≥ 500V & < 66kV	32.84	37.44	21.75	24.80	R65.75	R74.96	R8.47	R 9.66	R3.35	R3.82
	≥ 66kV & ≤ 132kV	31.68	36.12	21.02	23.96	R63.34	R72.21	R8.16	R 9.30	R3.26	R3.72
	> 132kV	30.62	34.91	20.32	23.16	R61.12	R69.68	R7.88	R 8.98	R4.12	R4.70
> 300km and ≤ 600km	< 500V	34.18	38.97	22.63	25.80	R68.63	R78.24	R8.85	R10.09	R3.69	R4.21
	≥ 500V & < 66kV	33.15	37.79	21.96	25.03	R66.42	R75.72	R8.56	R 9.76	R3.38	R3.85
	≥ 66kV & ≤ 132kV	31.96	36.43	21.19	24.16	R63.99	R72.95	R8.24	R 9.39	R3.29	R3.75
	> 132kV	30.89	35.21	20.51	23.38	R61.73	R70.37	R7.97	R 9.09	R4.17	R4.75
> 600km and ≤ 900km	< 500V	34.53	39.36	22.86	26.06	R69.31	R79.01	R8.93	R10.18	R3.74	R4.26
	≥ 500V & < 66kV	33.46	38.14	22.16	25.26	R67.09	R76.48	R8.65	R 9.86	R3.41	R3.89
	≥ 66kV & ≤ 132kV	32.28	36.80	21.41	24.41	R64.63	R73.68	R8.34	R 9.51	R3.32	R3.78
	> 132kV	31.20	35.57	20.71	23.61	R62.34	R71.07	R8.04	R 9.17	R4.22	R4.81
> 900km	< 500V	34.84	39.72	23.06	26.29	R70.01	R79.81	R9.03	R10.29	R3.75	R4.28
	≥ 500V & < 66kV	33.79	38.52	22.38	25.51	R67.75	R77.24	R8.74	R 9.96	R3.45	R3.93
	≥ 66kV & ≤ 132kV	32.58	37.14	21.60	24.62	R65.28	R74.42	R8.41	R 9.59	R3.33	R3.80
	> 132kV	31.48	35.89	20.88	23.80	R62.99	R71.81	R8.11	R 9.25	R4.25	R4.85

Electrification and rural subsidy (c/kWh)		Environmental levy charge (c/kWh)	
All Seasons		All Seasons	
VAT excl.	VAT incl.	VAT excl.	VAT incl.
5.41	6.17	2.00	2.28

Monthly utilised capacity	Service charge (R/Account/day)		Administration charge (R/POD/day)	
	VAT excl.	VAT incl.	VAT excl.	VAT incl.
≤ 100 kVA	R 5.95	R 6.78	R 1.31	R 1.49
> 100 kVA ≤ 500 kVA	R 27.18	R 30.99	R 7.62	R 8.69
> 500 kVA ≤ 1 MVA	R 83.62	R 95.33	R15.14	R17.26
Key customers	R1,638.73	R1,868.15	R52.33	R59.66

Voltage	Distribution network charges			
	Network access charge (R/kVA/m)		Network demand charge (R/kVA/m)	
	VAT excl.	VAT incl.	VAT excl.	VAT incl.
< 500V	R7.32	R8.34	R13.88	R15.82
≥ 500V & < 66 kV	R6.72	R7.66	R12.73	R14.51
≥ 66kV & ≤ 132 kV	R6.50	R7.41	R12.34	R14.07
> 132kV	R0.00	R0.00	R11.12	R12.68

Non-Local Authority & Local Authority Urban Tariffs

continued...

NIGHTSAVE Urban Small Local Authority Rates

Transmission zone	Voltage	Active energy charge (c/kWh)				Energy demand charges (R/kVA/m)				Transmission network charges (R/kVA/m)	
		High demand season (Jun-Aug)		Low demand season (Sep-May)		High demand season (Jun-Aug)		Low demand season (Sep-May)		VAT excl.	VAT incl.
		VAT excl.	VAT incl.	VAT excl.	VAT incl.	VAT excl.	VAT incl.	VAT excl.	VAT incl.		
≤ 300km	< 500V	35.54	40.52	23.54	26.84	R71.27	R81.25	R9.20	R10.49	R3.84	R4.38
	≥ 500V & < 66kV	34.44	39.26	22.83	26.03	R68.97	R78.63	R8.89	R10.13	R3.51	R4.00
	≥ 66kV & ≤ 132kV	33.23	37.88	22.04	25.13	R66.46	R75.76	R8.56	R 9.76	R3.42	R3.90
	> 132kV	32.12	36.62	21.33	24.32	R64.11	R73.09	R8.26	R 9.42	R4.33	R4.94
> 300km and ≤ 600km	< 500V	35.87	40.89	23.74	27.06	R71.99	R82.07	R9.28	R10.58	R3.88	R4.42
	≥ 500V & < 66kV	34.78	39.65	23.05	26.28	R69.67	R79.42	R8.97	R10.23	R3.54	R4.04
	≥ 66kV & ≤ 132kV	33.53	38.22	22.24	25.35	R67.13	R76.53	R8.66	R 9.87	R3.44	R3.92
	> 132kV	32.41	36.95	21.51	24.52	R64.76	R73.83	R8.35	R 9.52	R4.37	R4.98
> 600km and ≤ 900km	< 500V	36.22	41.29	23.99	27.35	R72.71	R82.89	R9.37	R10.68	R3.92	R4.47
	≥ 500V & < 66kV	35.10	40.01	23.25	26.51	R70.37	R80.22	R9.07	R10.34	R3.58	R4.08
	≥ 66kV & ≤ 132kV	33.86	38.60	22.45	25.59	R67.79	R77.28	R8.74	R 9.96	R3.48	R3.97
	> 132kV	32.74	37.32	21.72	24.76	R65.42	R74.58	R8.43	R 9.61	R4.43	R5.05
> 900km	< 500V	36.56	41.68	24.19	27.58	R73.45	R83.73	R9.46	R10.78	R3.94	R4.49
	≥ 500V & < 66kV	35.43	40.39	23.47	26.76	R71.09	R81.04	R9.16	R10.44	R3.62	R4.13
	≥ 66kV & ≤ 132kV	34.18	38.97	22.65	25.82	R68.50	R78.09	R8.83	R10.07	R3.49	R3.98
	> 132kV	33.02	37.64	21.90	24.97	R66.07	R75.32	R8.52	R 9.71	R4.46	R5.08

Electrification and rural subsidy (c/kWh)		Environmental levy charge (c/kWh)	
All Seasons		All Seasons	
VAT excl.	VAT incl.	VAT excl.	VAT incl.
5.67	6.46	2.00	2.28

Monthly utilised capacity	Service charge (R/Account/day)		Administration charge (R/POD/day)	
	VAT excl.	VAT incl.	VAT excl.	VAT incl.
≤ 100 kVA	R 6.26	R 7.14	R 1.38	R 1.57
> 100 kVA ≤ 500 kVA	R 28.51	R 32.50	R 7.99	R 9.11
> 500 kVA ≤ 1 MVA	R 87.73	R 100.01	R15.91	R18.14
Key customers	R1,719.26	R1,959.96	R54.90	R62.59

Voltage	Distribution network charges			
	Network access charge (R/kVA/m)		Network demand charge (R/kVA/m)	
	VAT excl.	VAT incl.	VAT excl.	VAT incl.
< 500V	R7.68	R8.76	R14.57	R16.61
≥ 500V & < 66 kV	R7.04	R8.03	R13.35	R15.22
≥ 66kV & ≤ 132 kV	R6.82	R7.77	R12.94	R14.75
> 132kV	R0.00	R0.00	R11.67	R13.30

MEGAFLEX

TOU electricity tariff for urban_p customers with an NMD greater than 1 MVA that are able to shift load, with the following charges:

- seasonally and time-of-use differentiated c/kWh **active energy charge**; based on the voltage of the supply and the transmission zone
- three daily time-of-use periods namely Peak, Standard and Off peak periods
- a R/kVA/month **transmission network charge** based on the voltage of the supply, the transmission zone and the utilised capacity applicable during all time periods
- a R/kVA/month **distribution network access charge** based on the voltage of the supply and the utilised capacity applicable during all time periods
- a R/kVA/month **distribution network demand charge** based on the voltage of the supply and the chargeable demand applicable during Peak and Standard periods
- a c/kvarh **reactive energy charge** supplied in excess of 30% (0,96 PF) of the kWh recorded during the peak and standard periods. The excess reactive energy is determined per 30-minute integrating period and accumulated for the month and will only be applicable during the high-demand season
- a c/kWh **electrification and rural subsidy** contribution to cross-subsidies to rural and Homelight tariffs, applied to the total active energy supplied in the month
- a c/kWh **environmental levy charge**, applied to the total active energy supplied in the month
- a R/day **service charge** based on monthly utilised capacity of each premise linked to an account
- a R/day **administration charge** based on monthly utilised capacity of each premise linked to an account

For a description of the charges - refer pages 11 & 12

Non-Local Authority & Local Authority Urban Tariffs

continued...

MEGAFLEX

Non-Local Authority Rates

Transmission zone	Voltage	Active energy charge (c/kWh)												Transmission network charges (R/kVA/mth)	
		High demand season (Jun-Aug)						Low demand season (Sep-May)						VAT excl.	VAT incl.
		Peak		Standard		Off Peak		Peak		Standard		Off Peak			
VAT excl.	VAT incl.	VAT excl.	VAT incl.	VAT excl.	VAT incl.	VAT excl.	VAT incl.	VAT excl.	VAT incl.	VAT excl.	VAT incl.	VAT excl.	VAT incl.		
≤ 300km	< 500V	147.08	167.67	38.20	43.55	20.38	23.23	41.03	46.77	25.12	28.64	17.55	20.01	R3.67	R4.18
	≥ 500V & < 66kV	142.38	162.31	37.01	42.19	19.77	22.54	39.75	45.32	24.35	27.76	17.03	19.41	R3.35	R3.82
	≥ 66kV & ≤ 132kV	137.22	156.43	35.70	40.70	19.11	21.79	38.35	43.72	23.51	26.80	16.47	18.78	R3.26	R3.72
	> 132kV	132.45	150.99	34.51	39.34	18.48	21.07	37.04	42.23	22.74	25.92	15.94	18.17	R4.12	R4.70
> 300km and ≤ 600km	< 500V	148.53	169.32	38.56	43.96	20.59	23.47	41.43	47.23	25.34	28.89	17.72	20.20	R3.69	R4.21
	≥ 500V & < 66kV	143.77	163.90	37.36	42.59	19.96	22.75	40.13	45.75	24.58	28.02	17.19	19.60	R3.38	R3.85
	≥ 66kV & ≤ 132kV	138.58	157.98	36.05	41.10	19.29	21.99	38.73	44.15	23.74	27.06	16.61	18.94	R3.29	R3.75
	> 132kV	133.75	152.48	34.83	39.71	18.65	21.26	37.42	42.66	22.96	26.17	16.07	18.32	R4.17	R4.75
> 600km and ≤ 900km	< 500V	150.00	171.00	38.94	44.39	20.77	23.68	41.83	47.69	25.59	29.17	17.87	20.37	R3.74	R4.26
	≥ 500V & < 66kV	145.20	165.53	37.73	43.01	20.13	22.95	40.52	46.19	24.81	28.28	17.33	19.76	R3.41	R3.89
	≥ 66kV & ≤ 132kV	139.95	159.54	36.38	41.47	19.45	22.17	39.09	44.56	23.95	27.30	16.75	19.10	R3.32	R3.78
	> 132kV	135.07	153.98	35.16	40.08	18.82	21.45	37.78	43.07	23.16	26.40	16.23	18.50	R4.22	R4.81
> 900km	< 500V	151.49	172.70	39.30	44.80	20.96	23.89	42.21	48.12	25.82	29.43	18.04	20.57	R3.75	R4.28
	≥ 500V & < 66kV	146.64	167.17	38.09	43.42	20.32	23.16	40.90	46.63	25.02	28.52	17.50	19.95	R3.45	R3.93
	≥ 66kV & ≤ 132kV	141.35	161.14	36.73	41.87	19.64	22.39	39.46	44.98	24.18	27.57	16.91	19.28	R3.33	R3.80
	> 132kV	136.42	155.52	35.48	40.45	18.99	21.65	38.11	43.45	23.38	26.65	16.36	18.65	R4.25	R4.85

Electrification & rural subsidy (c/kWh)		Environmental levy charge (c/kWh)		Reactive energy charge (c/kvarh)			
All Seasons		All Seasons		High Season		Low Season	
VAT excl.	VAT incl.	VAT excl.	VAT incl.	VAT excl.	VAT incl.	VAT excl.	VAT incl.
3.09	3.52	2.00	2.28	5.89	6.71	0.00	0.00

Voltage	Distribution network charges			
	Network access charge (R/kVA/m)		Network demand charge (R/kVA/m)	
	VAT excl.	VAT incl.	VAT excl.	VAT incl.
< 500V	R7.32	R8.34	R13.88	R15.82
≥ 500V & < 66 kV	R6.72	R7.66	R12.73	R14.51
≥ 66kV & ≤ 132 kV	R6.50	R7.41	R12.34	R14.07
> 132kV	R0.00	R0.00	R11.12	R12.68

Monthly utilised capacity	Service charge (R/Account/day)		Administration charge (R/POD/day)	
	VAT excl.	VAT incl.	VAT excl.	VAT incl.
> 1 MVA	R 83.62	R 95.33	R37.69	R42.97
Key customers	R1,638.73	R1,868.15	R52.33	R59.66

Non-Local Authority & Local Authority Urban Tariffs

continued...

MEGA FLEX

Local Authority Rates

Transmission zone	Voltage	Active energy charge (c/kWh)										Transmission network charges (R/kVA/mth)			
		High demand season (Jun-Aug)						Low demand season (Sep-May)				VAT excl.	VAT incl.		
		Peak		Standard		Off Peak		Peak		Standard				Off Peak	
VAT excl.	VAT incl.	VAT excl.	VAT incl.	VAT excl.	VAT incl.	VAT excl.	VAT incl.	VAT excl.	VAT incl.	VAT excl.	VAT incl.	VAT excl.	VAT incl.		
≤ 300km	< 500V	154.31	175.91	40.08	45.69	21.40	24.40	43.05	49.08	26.35	30.04	18.41	20.99	R3.84	R4.38
	≥ 500V & < 66kV	149.38	170.29	38.84	44.28	20.74	23.64	41.71	47.55	25.56	29.14	17.87	20.37	R3.51	R4.00
	≥ 66kV & ≤ 132kV	143.98	164.14	37.46	42.70	20.04	22.85	40.23	45.86	24.68	28.14	17.27	19.69	R3.42	R3.90
> 300km and ≤ 600km	< 500V	138.95	158.40	36.20	41.27	19.40	22.12	38.86	44.30	23.86	27.20	16.73	19.07	R4.33	R4.94
	≥ 500V & < 66kV	155.84	177.66	40.46	46.12	21.60	24.62	43.47	49.56	26.59	30.31	18.59	21.19	R3.88	R4.42
	≥ 66kV & ≤ 132kV	150.84	171.96	39.20	44.69	20.93	23.86	42.11	48.01	25.78	29.39	18.03	20.55	R3.54	R4.04
> 600km and ≤ 900km	< 500V	145.39	165.74	37.82	43.11	20.24	23.07	40.63	46.32	24.90	28.39	17.43	19.87	R3.44	R3.92
	≥ 500V & < 66kV	140.32	159.96	36.56	41.68	19.57	22.31	39.25	44.75	24.08	27.45	16.85	19.21	R4.37	R4.98
	≥ 66kV & ≤ 132kV	157.36	179.39	40.85	46.57	21.77	24.82	43.88	50.02	26.85	30.61	18.75	21.38	R3.92	R4.47
> 900km	< 500V	152.35	173.68	39.57	45.11	21.13	24.09	42.51	48.46	26.02	29.66	18.19	20.74	R3.58	R4.08
	≥ 500V & < 66kV	146.83	167.39	38.18	43.53	20.42	23.28	41.00	46.74	25.12	28.64	17.58	20.04	R3.48	R3.97
	> 132kV	141.73	161.57	36.88	42.04	19.76	22.53	39.64	45.19	24.30	27.70	17.01	19.39	R4.43	R5.05
> 900km	< 500V	158.92	181.17	41.24	47.01	21.99	25.07	44.30	50.50	27.08	30.87	18.94	21.59	R3.94	R4.49
	≥ 500V & < 66kV	153.84	175.38	39.95	45.54	21.32	24.30	42.92	48.93	26.26	29.94	18.37	20.94	R3.62	R4.13
	≥ 66kV & ≤ 132kV	148.29	169.05	38.54	43.94	20.60	23.48	41.39	47.18	25.37	28.92	17.74	20.22	R3.49	R3.98
> 900km	> 132kV	143.12	163.16	37.24	42.45	19.92	22.71	39.98	45.58	24.53	27.96	17.17	19.57	R4.46	R5.08

Electrification & rural subsidy (c/kWh)	Environmental levy charge (c/kWh)	Reactive energy charge (c/kvarh)							
		High Season		Low Season					
		VAT excl.	VAT incl.	VAT excl.	VAT incl.				
All Seasons	All Seasons	3.24	3.69	2.00	2.28	6.20	7.07	0.00	0.00

Monthly utilised capacity	Service charge (R/Account/day)		Administration charge (R/POD/day)	
	VAT excl.	VAT incl.	VAT excl.	VAT incl.
> 1 MVA	R 87.73	R 100.01	R39.53	R45.06
Key customers	R1,719.26	R1,959.96	R54.90	R62.59

Voltage	Distribution network charges			
	Network access charge (R/kVA/m)		Network demand charge (R/kVA/m)	
	VAT excl.	VAT incl.	VAT excl.	VAT incl.
< 500V	R7.68	R8.76	R14.57	R16.61
≥ 500V & < 66 kV	R7.04	R8.03	R13.35	R15.22
≥ 66kV & ≤ 132 kV	R6.82	R7.77	R12.94	R14.75
> 132kV	R0.00	R0.00	R11.67	R13.30

MINIFLEX

TOU electricity tariff for urban, customers with an NMD from 25 kVA up to 5 MVA, with the following charges:

- seasonally and time-of-use differentiated c/kWh **active energy charges** recovering energy and network costs based on the voltage of supply and the transmission zone
- three time-of-use periods namely peak, standard and off-peak periods
- a R/kVA/month (**network access charge**) bundled Transmission network and Distribution network access charge based on the voltage of the supply, the transmission zone and the utilised capacity applicable during all time periods
- no **network demand charge** – included in the active energy charges
- a c/kvarh **reactive energy charge** supplied in excess of 30% (0,96 PF) of the kWh recorded during the entire billing period. The excess reactive energy is determined using the billing period totals and will only be applicable during high-demand season
- a c/kWh **electrification and rural subsidy** contribution to cross-subsidies to rural and Homelight tariffs, applied to the total active energy supplied in the month
- a c/kWh **environmental levy charge**, applied to the total active energy supplied in the month
- a R/day **service charge** based on monthly utilised capacity of each premise linked to an account
- a R/day **administration charge** based on monthly utilised capacity of each premise linked to an account



For a description of the charges - refer pages 11 & 12

Non-Local Authority & Local Authority Urban Tariffs

continued...

MINIFLEX

Non-Local Authority Rates

		Active energy charge (c/kWh)												Network access charge (R/kVA/m)	
Transmission zone	Voltage	High demand season (Jun-Aug)						Low demand season (Sep-May)							
		Peak		Standard		Off Peak		Peak		Standard		Off Peak			
		VAT excl.	VAT incl.	VAT excl.	VAT incl.	VAT excl.	VAT incl.	VAT excl.	VAT incl.	VAT excl.	VAT incl.	VAT excl.	VAT incl.	VAT excl.	VAT incl.
≤ 300km	< 500V	153.55	175.05	44.66	50.91	20.38	23.23	47.50	54.15	31.59	36.01	17.55	20.01	R10.99	R12.53
	≥ 500V & < 66kV	148.31	169.07	42.95	48.96	19.77	22.54	45.70	52.10	30.28	34.52	17.03	19.41	R10.07	R11.48
	≥ 66kV & ≤ 132kV	142.98	163.00	41.45	47.25	19.11	21.79	44.09	50.26	29.27	33.37	16.47	18.78	R 9.76	R11.13
	>132kV	137.62	156.89	39.68	45.24	18.48	21.07	42.22	48.13	27.91	31.82	15.94	18.17	R 4.12	R 4.70
> 300km and ≤ 600km	< 500V	155.00	176.70	45.02	51.32	20.59	23.47	47.91	54.62	31.80	36.25	17.72	20.20	R11.01	R12.55
	≥ 500V & < 66kV	149.72	170.68	43.29	49.35	19.96	22.75	46.07	52.52	30.52	34.79	17.19	19.60	R10.10	R11.51
	≥ 66kV & ≤ 132kV	144.32	164.52	41.79	47.64	19.29	21.99	44.47	50.70	29.48	33.61	16.61	18.94	R 9.79	R11.16
	>132kV	138.94	158.39	40.00	45.60	18.65	21.26	42.57	48.53	28.11	32.05	16.07	18.32	R 4.17	R 4.75
> 600km and ≤ 900km	< 500V	156.45	178.35	45.40	51.76	20.74	23.64	48.28	55.04	32.04	36.53	17.86	20.36	R11.06	R12.61
	≥ 500V & < 66kV	151.13	172.29	43.64	49.75	20.13	22.95	46.45	52.95	30.73	35.03	17.33	19.76	R10.13	R11.55
	≥ 66kV & ≤ 132kV	145.69	166.09	42.13	48.03	19.43	22.15	44.83	51.11	29.66	33.81	16.73	19.07	R 9.82	R11.19
	>132kV	140.23	159.86	40.31	45.95	18.81	21.44	42.93	48.94	28.32	32.28	16.20	18.47	R 4.22	R 4.81
> 900km	< 500V	157.96	180.07	45.77	52.18	20.96	23.89	48.68	55.50	32.28	36.80	18.04	20.57	R11.07	R12.62
	≥ 500V & < 66kV	152.57	173.93	44.00	50.16	20.32	23.16	46.83	53.39	30.96	35.29	17.50	19.95	R10.17	R11.59
	≥ 66kV & ≤ 132kV	147.08	167.67	42.48	48.43	19.64	22.39	45.20	51.53	29.92	34.11	16.91	19.28	R 9.83	R11.21
	>132kV	141.57	161.39	40.67	46.36	18.99	21.65	43.31	49.37	28.55	32.55	16.36	18.65	R 4.25	R 4.85

Electrification & rural subsidy (c/kWh) All Seasons		Environmental levy charge (c/kWh) All Seasons		Reactive energy charge (c/kvarh)			
VAT excl.	VAT incl.	VAT excl.	VAT incl.	High Season		Low Season	
VAT excl.	VAT incl.	VAT excl.	VAT incl.	VAT excl.	VAT incl.	VAT excl.	VAT incl.
3.09	3.52	2.00	2.28	2.57	2.93	0.00	0.00

Monthly utilised capacity	Service charge (R/Account/day)		Administration charge (R/POD/day)	
	VAT excl.	VAT incl.	VAT excl.	VAT incl.
≤ 100 kVA	R 5.95	R 6.78	R 1.31	R 1.49
> 100 kVA ≤ 500 kVA	R27.18	R30.99	R 7.62	R 8.69
> 500 kVA ≤ 1 MVA	R83.62	R95.33	R15.14	R17.26
> 1 MVA	R83.62	R95.33	R37.69	R42.97
Key customers	R1,638.73	R1,868.15	R52.33	R59.66

Non-Local Authority & Local Authority Urban Tariffs continued...

MINIFLEX

Local Authority Rates

Transmission zone	Voltage	Active energy charge (c/kWh)										Network access charge (R/kVA/m)			
		High demand season (Jun-Aug)						Low demand season (Sep-May)							
		Peak		Standard		Off Peak		Peak		Standard		Off Peak		VAT excl.	VAT incl.
VAT excl.	VAT incl.	VAT excl.	VAT incl.	VAT excl.	VAT incl.	VAT excl.	VAT incl.	VAT excl.	VAT incl.	VAT excl.	VAT incl.	VAT excl.	VAT incl.		
≤ 300km	< 500V	161.09	183.64	46.86	53.42	21.40	24.40	49.85	56.83	33.14	37.78	18.41	20.99	R11.52	R13.13
	≥ 500V & < 66kV	155.61	177.40	45.05	51.36	20.74	23.64	47.93	54.64	31.77	36.22	17.87	20.37	R10.55	R12.03
	≥ 66kV & ≤ 132kV	150.00	171.00	43.49	49.58	20.04	22.85	46.25	52.73	30.70	35.00	17.27	19.69	R10.24	R11.67
	> 132kV	144.39	164.60	41.62	47.45	19.40	22.12	44.32	50.52	29.27	33.37	16.73	19.07	R 4.33	R 4.94
> 300km and ≤ 600km	< 500V	162.62	185.39	47.24	53.85	21.60	24.62	50.26	57.30	33.37	38.04	18.59	21.19	R11.56	R13.18
	≥ 500V & < 66kV	157.08	179.07	45.41	51.77	20.93	23.86	48.32	55.08	32.01	36.49	18.03	20.55	R10.58	R12.06
	≥ 66kV & ≤ 132kV	151.41	172.61	43.84	49.98	20.24	23.07	46.65	53.18	30.92	35.25	17.43	19.87	R10.26	R11.70
	> 132kV	145.76	166.17	41.97	47.85	19.57	22.31	44.66	50.91	29.49	33.62	16.85	19.21	R 4.37	R 4.98
> 600km and ≤ 900km	< 500V	164.13	187.11	47.62	54.29	21.76	24.81	50.66	57.75	33.62	38.33	18.74	21.36	R11.60	R13.22
	≥ 500V & < 66kV	158.56	180.76	45.80	52.21	21.13	24.09	48.74	55.56	32.25	36.77	18.19	20.74	R10.62	R12.11
	≥ 66kV & ≤ 132kV	152.84	174.24	44.19	50.38	20.39	23.24	47.04	53.63	31.13	35.49	17.57	20.03	R10.30	R11.74
	> 132kV	147.13	167.73	42.30	48.22	19.73	22.49	45.04	51.35	29.70	33.86	17.00	19.38	R 4.43	R 5.05
> 900km	< 500V	165.70	188.90	48.02	54.74	21.99	25.07	51.08	58.23	33.87	38.61	18.94	21.59	R11.62	R13.25
	≥ 500V & < 66kV	160.07	182.48	46.17	52.63	21.32	24.30	49.14	56.02	32.48	37.03	18.37	20.94	R10.66	R12.15
	≥ 66kV & ≤ 132kV	154.31	175.91	44.57	50.81	20.60	23.48	47.44	54.08	31.39	35.78	17.74	20.22	R10.31	R11.75
	> 132kV	148.53	169.32	42.68	48.66	19.92	22.71	45.42	51.78	29.94	34.13	17.17	19.57	R 4.46	R 5.08

Electrification & rural subsidy (c/kWh) All Seasons		Environmental levy charge (c/kWh) All Seasons		Reactive energy charge (c/kvarh)			
				High Season		Low Season	
VAT excl.	VAT incl.	VAT excl.	VAT incl.	VAT excl.	VAT incl.	VAT excl.	VAT incl.
3.24	3.69	2.00	2.28	2.69	3.07	0.00	0.00

Monthly utilised capacity	Service charge (R/Account/day)		Administration charge (R/POD/day)	
	VAT excl.	VAT incl.	VAT excl.	VAT incl.
≤ 100 kVA	R 6.26	R 7.14	R 1.38	R 1.57
> 100 kVA ≤ 500 kVA	R 28.51	R 32.50	R 7.99	R 9.11
> 500 kVA ≤ 1 MVA	R 87.73	R 100.01	R15.91	R18.14
> 1 MVA	R 87.73	R 100.01	R39.53	R45.06
Key customers	R1,719.26	R1,959.96	R54.90	R62.59

BUSINESSRATE

Suite of electricity tariffs typically for commercial usage and for high consumption, non-commercial supplies such as churches, schools, halls, clinics, old-age homes or similar supplies in urban areas with an NMD of up to 100kVA, with the following charges:

- a single c/kWh **energy charge**
- a R/day **network charge** based on the NMD of the supply
- a R/day **service charge** based on the NMD of the supply
- a c/kWh **environmental levy charge**, applied to the total active energy supplied in the month

The Businessrate suite of tariffs are:

Businessrate 1	dual-phase 32 kVA (80 A per phase) three-phase 25 kVA (40 A per phase)
Businessrate 2	dual-phase 64 kVA (150 A per phase) three-phase 50 kVA (80 A per phase)
Businessrate 3	dual-phase 100 kVA (225 A per phase) three-phase 100 kVA (150 A per phase)
Businessrate 4	single-phase 16 kVA (80 A per phase)

BUSINESSRATE Non-Local Authority Rates

	Service charge (R/POD/day)		Network charge (R/POD/day)		Energy charge (c/kWh)		Environmental levy charge (c/kWh)	
	VAT excl.	VAT incl.	VAT excl.	VAT incl.	VAT excl.	VAT incl.	VAT excl.	VAT incl.
Businessrate 1	R7.69	R8.77	R 8.93	R10.18	49.42	56.34	2.00	2.28
Businessrate 2	R7.69	R8.77	R15.05	R17.16	49.42	56.34	2.00	2.28
Businessrate 3	R7.69	R8.77	R26.01	R29.65	49.42	56.34	2.00	2.28
Businessrate 4					125.72	143.32	2.00	2.28

For a description of the charges - refer pages 11 & 12

Non-Local Authority & Local Authority Urban Tariffs

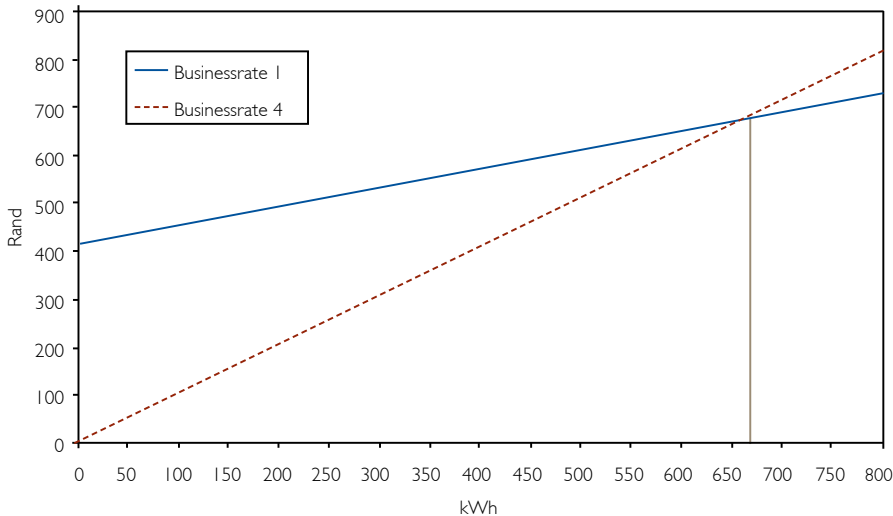
continued...

BUSINESSRATE Local Authority Rates

	Service charge (R/POD/day)		Network charge (R/POD/day)		Energy charge (c/kWh)		Environmental levy charge (c/kWh)	
	VAT excl.	VAT incl.	VAT excl.	VAT incl.	VAT excl.	VAT incl.	VAT excl.	VAT incl.
Businessrate 1	R8.07	R9.20	R 9.37	R10.68	51.84	59.10	2.00	2.28
Businessrate 2	R8.07	R9.20	R15.79	R18.00	51.84	59.10	2.00	2.28
Businessrate 3	R8.07	R9.20	R27.28	R31.10	51.84	59.10	2.00	2.28
Businessrate 4					131.90	150.37	2.00	2.28

For a description of the charges - refer to pages 11 & 12

Comparison of Businessrate 1 and Businessrate 4



The break-even between Businessrate 1 and Businessrate 4 is 662 kWh/month.

- If less than 662 kWh/month is used, Businessrate 4 is cheaper than Businessrate 1.
- If more than 662 kWh/month is used, Businessrate 1 is cheaper than Businessrate 4.

PUBLIC LIGHTING

Electricity tariff for public lighting or similar supplies in urban areas where Eskom provides a supply for, and maintains, any street lighting or similar public lighting and where, the charge for the supply and service is fixed based on the number of lights and light fixtures. This tariff is applicable only in an Eskom-designated urban area.

The Public Lighting tariff is made up of a range of tariffs, as follows:

All night:	333,3 hours per month
24 hours:	730 hours per month
Urban fixed:	based on consumption of 200 kWh per month

This tariff has the following charges:

- the energy charge per light/supply is based on the number of hours for which the supply will be used in a day and the time at which the electricity will be used.
- the energy charge is calculated using either a c/kWh energy rate or a R/100 W/month energy rate.
- if the c/kWh energy rate is used, kWh is calculated as $\text{kWh} = \text{number of lights} \times \text{light wattage} \times \text{hours in use}$.
- a monthly maintenance charge per light.

The urban fixed tariff is based on a consumption of 200 kWh/month at the All Night rate, this is suitable for small urban telephony installations (telephone booths, switchgear installations, etc).

In order to provide a public lighting service in its licensed area of supply, Eskom will enter into a written Electricity Supply Agreement for Public Lighting with a recognised representative body with legal powers, e.g. a local authority, the traffic department, etc, which, in turn, normally provides a service to the general public. Eskom will not enter into an electricity supply agreement with home dwellers for public lighting services.

Typical supplies are neon and billboard signs, traffic lights, street lights and lights in telephone booths.

Connection fees

Actual cost per streetlight connection or per high-mast connection.

Energy charge

There are two methods of charging for energy – either by means of a metered supply or by means of a monthly energy charge. The supply may be metered on either the Homepower or the Businessrate tariff. The choice of tariff will depend on the consumption of the supply.

Non-Local Authority & Local Authority Urban Tariffs

continued..

Where a Public Lighting supply is not metered, an energy charge based on the number of hours in a day for which the supply will be used and the time at which the electricity will be used, is payable per month per light fitting. The energy charge is calculated using either the c/kWh energy rate or the R/100W/month energy rate. Where the c/kWh energy rate is used, kWh is calculated as kWh = number of lights x light wattage x hours in use.

PUBLIC LIGHTING Non-Local Authority Rates

		All Night		24 Hours		Environmental levy charge (c/kWh)	
		VAT excl.	VAT incl.	VAT excl.	VAT incl.	VAT excl.	VAT incl.
Public Lighting	Energy charge (c/kWh)	35.88	40.90	47.63	54.30	2.00	2.28
	Energy charge (R/100W/month)	R12.62	R14.39	R36.23	R41.30	Environmental levy incl.	
Public Lighting-Urban Fixed	Fixed Charge (R/POD/day)	R 2.49	R 2.84	* Public Lighting - Urban Fixed charge includes the Environmental levy			

Maintenance charges	R/month	
	VAT excl.	VAT incl.
Per luminaire	R23.58	R26.88
Per High-mast luminaire	R549.00	R625.86

PUBLIC LIGHTING Local Authority Rates

		All Night		24 Hours		Environmental levy charge (c/kWh)	
		VAT excl.	VAT incl.	VAT excl.	VAT incl.	VAT excl.	VAT incl.
Public Lighting	Energy charge (c/kWh)	37.65	42.92	49.97	56.97	2.00	2.28
	Energy charge (R/100W/month)	R13.22	R15.07	R37.94	R43.25	Environmental levy incl.	
Public Lighting-Urban Fixed	Fixed Charge (R/POD/day)	R 2.61	R 2.98	* Public Lighting - Urban Fixed charge includes the Environmental levy			

Maintenance charges	R/month	
	VAT excl.	VAT incl.
Per luminaire	R 24.05	R 27.42
Per High-mast luminaire	R561.48	R640.09

Non-Local Authority & Local Authority Residential Tariffs

The inclining block tariff

On 24 February 2010, the National energy regulator of South Africa (NERSA) approved an annual average price increase on all tariffs.

- At the same time, NERSA approved the implementation of the inclining block tariff to the residential customer base.
- For billed customers, as from 1 April 2010 Homelight and Homepower tariffs will be replaced by an inclining block tariff.

An inclining block tariff structure is commonly used to charge for water usage and the main feature is that the more you use, the higher the average price. The objective of the inclining block tariff is to provide a cross-subsidy for lower usage customers against high price increases resulting in a reduction in tariff to these customers. This means that higher consumption customers will see increasingly higher charges based on their electricity usage.

- The tariff structure is divided into four consumption blocks and each subsequent block has a higher price per kWh of energy. The amount payable is the sum of consumption per block multiplied by the energy rate/price per unit associated with each block. The selection of the blocks, the limits and the prices per unit have been set by NERSA and this structure is required to be implemented by Eskom as is.

The inclining block structure has only been implemented at the time of printing this booklet to conventionally metered supplies as Eskom's prepayment metering system cannot vend the inclining block tariff.

Note that NERSA did not restructure local authority residential tariffs.

HOMEPOWER Bulk

An electricity tariff for residential bulk supplies >100 kVA, typically sectional title developments and multiple housing units, in urban areas connected prior to 1 January 2004.

- Homepower Bulk is currently in the process of being phased out due to the introduction of the inclining block tariff.
- All customers on this tariff will be required to convert to Miniflex or Nightsave Urban.

Note: Conversions are done on request only. Customers who do not want to convert or do not apply for a conversion will have the inclining block tariff applied to their bill (refer rates for Homepower Standard and Homelight).

HOMEPOWER Standard

Suite of electricity tariffs typically for residential customers and low consumption supplies such as churches, schools, halls, clinics, old-age homes or similar supplies in urban areas with an NMD of up to 100 kVA.

The non-local authority Homepower Standard tariff has the following charges:

- an **inclining block rate energy** charge applied to all energy consumed, divided into four consumption blocks
- a **c/kWh environmental levy charge**, applied to all energy consumed.

NOTE: There are no service and network charges payable on the inclining block rate tariff.

The Homepower Standard tariff is made up of a range of tariffs, as follows:

Homepower 1	dual-phase 32 kVA (80 A per phase) three-phase 25 kVA (40 A per phase)
Homepower 2	dual-phase 64 kVA (150 A per phase) three-phase 50 kVA (80 A per phase)
Homepower 3	dual-phase 100 kVA (225 A per phase) three-phase 100 kVA (150 A per phase)
Homepower 4	single-phase 16 kVA (80 A per phase)

HOMEPOWER Standard Non-Local Authority Rates

	Energy charge (c/kWh)		Environmental levy charge (c/kWh)		Total	
	VAT excl.	VAT incl.	VAT excl.	VAT incl.	VAT excl.	VAT incl.
Block 1 ≤ 50 kWh	52.70	60.80	2.00	2.28	54.70	62.36
Block 2 51 - 350 kWh	56.48	64.39	2.00	2.28	58.48	66.67
Block 3 351 - 600 kWh	74.35	84.76	2.00	2.28	76.35	87.04
Block 4 > 600 kWh	81.74	93.18	2.00	2.28	83.74	95.46

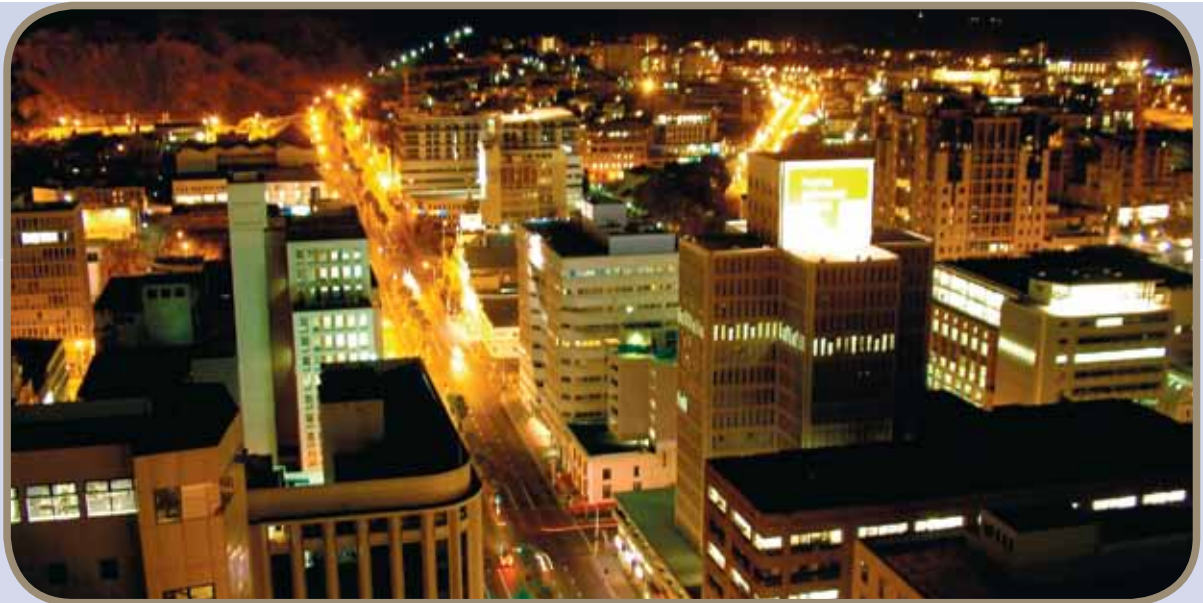
Non-Local Authority & Local Authority Residential Tariffs continued...

The local authority Homepower Standard tariff has the following charges:

- a single c/kWh **energy charge**
- a R/day **network charge** based on the NMD of the supply
- a R/day **service charge** based on the NMD of the supply
- a c/kWh **environmental levy charge**, applied to the total active energy supplied in the month.

HOMEPOWER Standard Local Authority Rates

	Service charge (R/POD/day)		Network charge (R/POD/day)		Energy charge (c/kWh)		Environmental levy charge (c/kWh)	
	VAT excl.	VAT incl.	VAT excl.	VAT incl.	VAT excl.	VAT incl.	VAT excl.	VAT incl.
Homepower 1	R3.16	R3.60	R 3.94	R 4.49	65.30	74.44	2.00	2.28
Homepower 2	R3.16	R3.60	R 8.52	R 9.71	65.30	74.44	2.00	2.28
Homepower 3	R3.16	R3.60	R17.12	R19.52	65.30	74.44	2.00	2.28
Homepower 4	R3.16	R3.60	R 2.02	R 2.30	65.30	74.44	2.00	2.28



HOMELIGHT

Suite of electricity tariffs that provides a subsidy to low-usage single phase residential supplies in urban, and electrification areas and has the following charges:

For non-local authority **conventionally billed** customers:

- an **inclining block rate energy charge** applied to all energy consumed, divided into four consumption blocks
- a **c/kWh environmental levy charge**, applied equally to all energy consumed

HOMELIGHT Non-Local Authority Rates - Homelight 1 & 2 Conventional

	Energy charge (c/kWh)		Environmental levy charge (c/kWh)		Total	
	VAT excl.	VAT incl.	VAT excl.	VAT incl.	VAT excl.	VAT incl.
Block 1 ≤ 50 kWh	52.70	60.80	2.00	2.28	54.70	62.36
Block 2 51 - 350 kWh	56.48	64.39	2.00	2.28	58.48	66.67
Block 3 351 - 600 kWh	74.35	84.76	2.00	2.28	76.35	87.04
Block 4 > 600 kWh	81.74	93.18	2.00	2.28	83.74	95.46

For non-local authority **prepaid** and local authority customers:

- an **active energy charge** applied to all energy consumed,
- a **c/kWh environmental levy charge**, applied to all energy consumed.

Non-Local Authority & Local Authority Residential Tariffs continued...

HOMELIGHT

Non-Local Authority Rates - Homelight 1 & 2 Prepaid

	Energy charge (c/k/Wh)		Environmental levy charge (c/k/Wh)		Total	
	VAT excl.	VAT incl.	VAT excl.	VAT incl.	VAT excl.	VAT incl.
Homelight 1						
10A	55.54	63.32	2.00	2.28	57.54	65.60
20A	55.54	63.32	2.00	2.28	57.54	65.60
60A	56.19	64.06	2.00	2.28	58.19	66.34
Homelight 2						
20A	48.44	55.22	2.00	2.28	50.44	57.50
60A	49.77	56.74	2.00	2.28	51.77	59.02

HOMELIGHT

Local Authority Rates - Homelight 1 & 2 (prepaid and conventional)

	Energy charge (c/k/Wh)		Environmental levy charge (c/k/Wh)		Total	
	VAT excl.	VAT incl.	VAT excl.	VAT incl.	VAT excl.	VAT incl.
Homelight 1						
10A	100.79	114.90	2.00	2.28	102.79	117.18
20A	100.79	114.90	2.00	2.28	102.79	117.18
60A	113.37	129.24	2.00	2.28	115.37	131.52
Homelight 2						
20A	87.52	99.77	2.00	2.28	89.52	102.05
60A	100.12	114.14	2.00	2.28	102.12	116.42

Explanation of the capacity of the supply

Any combination of appliances can be used at the same time as long as the capacity of all appliances does not exceed a maximum of **4 200 W for 20A** limited supplies and **12 500 W for 60A** limited supplies.

However, for any customers still on 2.5A or 10A, the following capacity should not be exceeded; 525 W for 2.5A limited supplies, 2 100 W for 10A limited supplies.

Any customers who wish to upgrade their supply from 20A to 60A should be aware of the connection fee applicable to supplies greater than 20A.

Non-Local Authority & Local Authority Residential Tariffs continued...

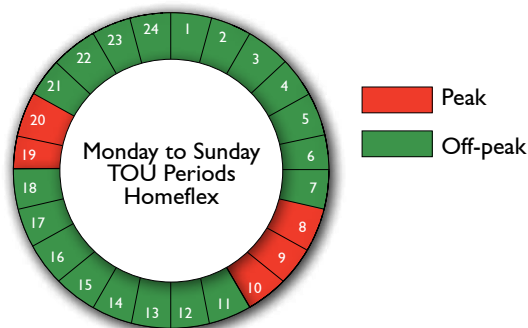
HOMEFLEX

A TOU electricity tariff suitable for medium-to-high usage residential customers in urban areas with an NMD of up to 100 kVA and has the following charges:

- seasonally and time-of-use differentiated c/kWh **active energy charge**
- a R/day **network charge** based on the NMD of the supply
- a R/day **service charge** based on the NMD of the supply
- a c/kWh **environmental levy charge**, applied to the total active energy supplied in the month

This tariff will be implemented initially on a voluntary basis to 10 000 suburban residential customers in selected areas, together with advanced metering infrastructure (smart metering technology). Homeflex will be marketed to suburban residential customers in a phased approach, once the advanced metering infrastructure (meter, communications and systems) is in place.

Defined time periods



HOMEFLEX

Non-Local Authority Rates

		Service Charge (R/POD/day)		Network Charge (R/POD/day)		Peak Energy Charge (c/kWh)		Off Peak Energy Charge (c/kWh)		Environmental levy charge (c/kWh)	
		VAT excl.	VAT incl.	VAT excl.	VAT incl.	VAT excl.	VAT incl.	VAT excl.	VAT incl.	VAT excl.	VAT incl.
Homeflex 1	High demand	R2.45	R 2.79	R 3.04	R 3.47	144.52	164.75	45.54	51.92	2.00	2.28
	Low demand					54.43	62.05	36.27	41.35	2.00	2.28
Homeflex 2	High demand	R2.45	R 2.79	R 6.57	R 7.49	144.52	164.75	45.54	51.92	2.00	2.28
	Low demand					54.43	62.05	36.27	41.35	2.00	2.28
Homeflex 3	High demand	R2.45	R 2.79	R 13.22	R 15.07	144.52	164.75	45.54	51.92	2.00	2.28
	Low demand					54.43	62.05	36.27	41.35	2.00	2.28
Homeflex 4	High demand	R2.45	R 2.79	R 1.55	R 1.77	144.52	164.75	45.54	51.92	2.00	2.28
	Low demand					54.43	62.05	36.27	41.35	2.00	2.28

NIGHTSAVE Rural

Electricity tariff for high load factor rural_p customers, with an NMD from 25 kVA at a supply voltage ≤ 22 kV (or 33 kV where designated by Eskom as rural), and has the following charges:

- seasonally differentiated c/kWh **active energy charges**; based on the voltage of the supply and the transmission zone
- seasonally differentiated **energy demand charge** (which includes network costs) based on the voltage of the supply, the chargeable demand and the transmission zone; applicable during peak periods only
- a bundled R/kVA/month (**network access charge**) Transmission and Distribution network access charge based on the voltage of the supply, the transmission zone and the utilised capacity applicable during all time periods
- no network demand charge
- a c/kWh **environmental levy**, applied to the total active energy supplied in the month
- a R/day **service charge** based on monthly utilised capacity of each premise linked to an account
- a R/day **administration charge** based on monthly utilised capacity of each premise linked to an account



For a description of the charges - refer pages 11 & 12

Non-Local Authority & Local Authority Rural Tariffs

continued...

NIGHTSAVE Rural Non-Local Authority Rates

		Active energy charge (c/kWh)				Energy demand charge (R/kVA/m)				Network access charge (R/kVA/m)	
Transmission zone	Voltage	High demand season (Jun-Aug)		Low demand season (Sep-May)		High demand season (Jun-Aug)		Low demand season (Sep-May)		VAT excl.	VAT incl.
		VAT excl.	VAT incl.	VAT excl.	VAT incl.	VAT excl.	VAT incl.	VAT excl.	VAT incl.		
≤ 300km	< 500V	33.68	38.40	22.07	25.16	R131.79	R150.24	R79.91	R91.10	R5.65	R6.44
	≥ 500V & ≤ 22kV	32.62	37.19	21.39	24.38	R128.37	R146.34	R77.84	R88.74	R5.19	R5.92
> 300km and ≤ 600km	< 500V	33.98	38.74	22.26	25.38	R133.12	R151.76	R80.72	R92.02	R5.67	R6.46
	≥ 500V & ≤ 22kV	32.94	37.55	21.58	24.60	R129.68	R147.84	R78.62	R89.63	R5.21	R5.94
> 600km and ≤ 900km	< 500V	34.32	39.12	22.47	25.62	R134.45	R153.27	R81.52	R92.93	R5.72	R6.52
	≥ 500V & ≤ 22kV	33.25	37.91	21.79	24.84	R130.97	R149.31	R79.41	R90.53	R5.25	R5.99
> 900km	< 500V	34.65	39.50	22.67	25.84	R135.82	R154.83	R82.34	R93.87	R5.73	R6.53
	≥ 500V & ≤ 22kV	33.57	38.27	21.98	25.06	R132.31	R150.83	R80.22	R91.45	R5.26	R6.00

Environmental levy charge (c/kWh)	
All Seasons	
VAT excl.	VAT incl.
2.00	2.28

Monthly utilised capacity	Service charge (R/POD/day)		Administration charge (R/POD/day)	
	VAT excl.	VAT incl.	VAT excl.	VAT incl.
≤ 100 kVA	R 7.66	R 8.73	R 2.18	R 2.49
> 100 kVA & ≤ 500 kVA	R 26.13	R 29.79	R12.11	R13.81
> 500 kVA & ≤ 1 MVA	R 80.37	R 91.62	R18.58	R21.18
> 1 MVA	R 80.37	R 91.62	R34.49	R39.32
Key customers	R1,575.04	R1,795.55	R34.49	R39.32

Non-Local Authority & Local Authority Rural Tariffs

continued...

NIGHTSAVE Rural Local Authority Rates

		Active energy charge (c/kWh)				Energy demand charge (R/kVA/m)				Network access charge (R/kVA/m)	
Transmission zone	Voltage	High demand season (Jun-Aug)		Low demand season (Sep-May)		High demand season (Jun-Aug)		Low demand season (Sep-May)		VAT excl.	VAT incl.
		VAT excl.	VAT incl.	VAT excl.	VAT incl.	VAT excl.	VAT incl.	VAT excl.	VAT incl.		
≤ 300km	< 500V ≥ 500V & ≤ 22kV	36.74	41.88	24.08	27.45	R143.85	R163.99	R87.23	R 99.44	R6.16	R7.02
		35.62	40.61	23.34	26.61	R140.13	R159.75	R84.97	R 96.87	R5.66	R6.45
> 300km and ≤ 600km	< 500V ≥ 500V & ≤ 22kV	37.08	42.27	24.30	27.70	R145.31	R165.65	R88.09	R100.42	R6.20	R7.07
		35.95	40.98	23.58	26.88	R141.55	R161.37	R85.82	R 97.83	R5.68	R6.48
> 600km and ≤ 900km	< 500V ≥ 500V & ≤ 22kV	37.46	42.70	24.53	27.96	R146.77	R167.32	R88.98	R101.44	R6.26	R7.14
		36.30	41.38	23.78	27.11	R142.98	R163.00	R86.69	R 98.83	R5.72	R6.52
> 900km	< 500V ≥ 500V & ≤ 22kV	37.81	43.10	24.75	28.22	R148.25	R169.01	R89.89	R102.47	R6.28	R7.16
		36.65	41.78	24.00	27.36	R144.42	R164.64	R87.57	R 99.83	R5.74	R6.54

Environmental levy charge (c/kWh) All Seasons	
VAT excl.	VAT incl.
2.00	2.28

Monthly utilised capacity	Service charge (R/POD/day)		Administration charge (R/POD/day)	
	VAT excl.	VAT incl.	VAT excl.	VAT incl.
≤ 100 kVA	R 8.35	R 9.52	R 2.40	R 2.74
> 100 kVA & ≤ 500 kVA	R 28.51	R 32.50	R13.21	R15.06
> 500 kVA & ≤ 1 MVA	R 87.73	R 100.01	R20.26	R23.10
> 1 MVA	R 87.73	R 100.01	R37.65	R42.92
Key customers	R1,719.26	R1,959.96	R37.65	R42.92

- The network access charge is subsidised by the electrification and rural subsidy on Nightsave (Urban), Megaflex and Miniflex.
 - The energy demand charge includes some network costs, i.e. there is no separate network charge.
- * Note that some rural networks with a voltage of 33 kV have been specifically designated by Eskom as rural reticulation networks.

Non-Local Authority & Local Authority Rural Tariffs

continued...

RURAFLEX

TOU electricity tariff for rural_p customers with dual and three-phase supplies with an NMD from 25 kVA with a supply voltage $\leq 22\text{kV}$ (or 33 kV where designated by Eskom as rural) and has the following charges:

- seasonally and time-of-use differentiated c/kWh **active energy charges** (which includes network costs)
- three time-of-use periods namely Peak, Standard and Off-Peak Periods
- a R/kVA/month bundled **network access charge** applicable during all time periods
- no Network Demand Charge
- a c/kvarh **reactive energy charge** supplied in excess of 30% (0,96 PF) of the kWh recorded during the entire billing period. The excess reactive energy is determined using the billing period totals and will only be applicable during the high-demand season
- a c/kWh **environmental levy**, applied to the total active energy supplied in the month
- a R/day **service charge** based on the monthly utilised capacity of each premise linked to an account
- a R/day **administration charge** based on the monthly utilised capacity of each premise linked to an account



For a description of the charges - refer pages 11 & 12

Non-Local Authority & Local Authority Rural Tariffs

continued...

RURALEX

Non-Local Authority Rates

		Active energy charge (c/kWh)												Network access charge (R/kVA/m)	
Transmission zone	Voltage	High demand season (Jun-Aug)						Low demand season (Sep-May)							
		Peak		Standard		Off Peak		Peak		Standard		Off Peak			
		VAT excl.	VAT incl.	VAT excl.	VAT incl.	VAT excl.	VAT incl.	VAT excl.	VAT incl.	VAT excl.	VAT incl.	VAT excl.	VAT incl.		
≤ 300km	< 500V	225.14	256.66	57.68	65.76	30.33	34.58	61.97	70.65	37.53	42.78	25.91	29.54	R7.89	R8.99
	≥ 500V & ≤ 22kV	214.73	244.79	55.08	62.79	28.99	33.05	59.17	67.45	35.86	40.88	24.78	28.25	R7.23	R8.24
> 300km and ≤ 600km	< 500V	226.59	258.31	58.03	66.15	30.51	34.78	62.38	71.11	37.76	43.05	26.08	29.73	R7.92	R9.03
	≥ 500V & ≤ 22kV	216.14	246.40	55.42	63.18	29.16	33.24	59.55	67.89	36.08	41.13	24.94	28.43	R7.28	R8.30
> 600km and ≤ 900km	< 500V	228.03	259.95	58.41	66.59	30.71	35.01	62.76	71.55	37.98	43.30	26.24	29.91	R7.96	R9.07
	≥ 500V & ≤ 22kV	217.55	248.01	55.77	63.58	29.35	33.46	59.92	68.31	36.31	41.39	25.11	28.63	R7.31	R8.33
> 900km	< 500V	229.48	261.61	58.77	67.00	30.89	35.21	63.15	71.99	38.22	43.57	26.39	30.08	R7.99	R9.11
	≥ 500V & ≤ 22kV	218.95	249.60	56.13	63.99	29.52	33.65	60.30	68.74	36.55	41.67	25.24	28.77	R7.32	R8.34

Environmental levy (c/kWh)	Reactive energy charge (c/kvarh)					
	All Seasons		High Season		Low Season	
	VAT excl.	VAT incl.	VAT excl.	VAT incl.	VAT excl.	VAT incl.
2.00	2.28	3.74	4.26	0.00	0.00	

Monthly utilised capacity	Service charge (R/POD/day)		Administration charge (R/POD/day)	
	VAT excl.	VAT incl.	VAT excl.	VAT incl.
≤ 100 kVA	R 7.66	R 8.73	R 2.18	R 2.49
> 100 kVA & ≤ 500 kVA	R 26.13	R 29.79	R12.11	R13.81
> 500 kVA & ≤ 1 MVA	R 80.37	R 91.62	R18.58	R21.18
> 1 MVA	R 80.37	R 91.62	R34.49	R39.32
Key customers	R1,575.04	R1,795.55	R34.49	R39.32

Non-Local Authority & Local Authority Rural Tariffs

continued...

RURA FLEX

Local Authority Rates

		Active energy charge (c/k/Wh)												Network access charge (R/kVA/m)	
Transmission zone	Voltage	High demand season (Jun-Aug)						Low demand season (Sep-May)							
		Peak		Standard		Off Peak		Peak		Standard		Off Peak			
		VAT excl.	VAT incl.	VAT excl.	VAT incl.	VAT excl.	VAT incl.	VAT excl.	VAT incl.	VAT excl.	VAT incl.	VAT excl.	VAT incl.	VAT excl.	VAT incl.
≤ 300km	< 500V ≥ 500V & ≤ 22kV	245.76	280.17	62.97	71.79	33.11	37.75	67.65	77.12	40.96	46.69	28.29	32.25	R8.61	R9.82
		234.39	267.20	60.12	68.54	31.64	36.07	64.59	73.63	39.13	44.61	27.06	30.85	R7.91	R9.02
> 300km and ≤ 600km	< 500V ≥ 500V & ≤ 22kV	247.33	281.96	63.37	72.24	33.31	37.97	68.10	77.63	41.21	46.98	28.46	32.44	R8.64	R9.85
		235.93	268.96	60.49	68.96	31.84	36.30	65.00	74.10	39.39	44.90	27.22	31.03	R7.94	R9.05
> 600km and ≤ 900km	< 500V ≥ 500V & ≤ 22kV	248.91	283.76	63.75	72.68	33.51	38.20	68.51	78.10	41.48	47.29	28.64	32.65	R8.70	R9.92
		237.46	270.70	60.87	69.39	32.04	36.53	65.42	74.58	39.64	45.19	27.40	31.24	R7.98	R9.10
> 900km	< 500V ≥ 500V & ≤ 22kV	250.49	285.56	64.15	73.13	33.72	38.44	68.94	78.59	41.72	47.56	28.81	32.84	R8.73	R9.95
		239.01	272.47	61.27	69.85	32.23	36.74	65.83	75.05	39.88	45.46	27.56	31.42	R7.99	R9.11

Environmental levy charge (c/kWh)		Reactive energy charge (c/kvarh)			
All Seasons		High Season		Low Season	
VAT excl.	VAT incl.	VAT excl.	VAT incl.	VAT excl.	VAT incl.
2.00	2.28	4.09	4.66	0.00	0.00

Monthly utilised capacity	Service charge (R/POD/day)		Administration charge (R/POD/day)	
	VAT excl.	VAT incl.	VAT excl.	VAT incl.
≤ 100 kVA	R8.35	R9.52	R2.40	R2.74
> 100 kVA & ≤ 500 kVA	R28.51	R32.50	R13.21	R15.06
> 500 kVA & ≤ 1 MVA	R87.73	R100.01	R20.26	R23.10
> 1 MVA	R87.73	R100.01	R37.65	R42.92
Key customers	R1,719.26	R1,959.96	R37.65	R42.92

LANDRATE

Electricity tariff for rural customers with single, dual or three-phase conventionally metered supplies with an NMD up to 100 kVA with a supply voltage ≤ 500 V and has the following charges:

- A single c/kWh **active energy charge**
- A R/day **network charge** based on the NMD of the supply
- A R/day **service charge** based on the size of supply
- a c/kWh **environmental levy charge** applied to the total active energy supplied in the month
- Landrate Dx is a non-metered supply with a fixed charge based on Landrate 4, typically suited to small telecommunication installations, where the electricity usage is low enough not to warrant metering for billing purposes.

The Landrate range of tariffs are:

Landrate 1	single-phase 16 kVA (80 A per phase) dual-phase 32 kVA (80 A per phase) three-phase 25 kVA (40 A per phase)
Landrate 2	dual-phase 64 kVA (150 A per phase) three-phase 50 kVA (80 A per phase)
Landrate 3	dual-phase 100 kVA (225 A per phase) three-phase 100 kVA (150 A per phase)
Landrate 4	single-phase 16 kVA (80 A per phase)
Landrate Dx	single-phase 5 kVA (limited to 10 A per phase)

For a description of the charges - refer pages 11 & 12

Non-Local Authority & Local Authority Rural Tariffs

continued...

LANDRATE

Non-Local Authority Rates

	Service charge (R/POD/day)		Network charge (R/POD/day)		Energy charge (c/k/Wh)		Environmental levy charge (c/k/Wh)	
	VAT excl.	VAT incl.	VAT excl.	VAT incl.	VAT excl.	VAT incl.	VAT excl.	VAT incl.
Landrate 1	R9.84	R11.22	R12.01	R13.69	54.92	62.61	2.00	2.28
Landrate 2	R9.84	R11.22	R18.47	R21.06	54.92	62.61	2.00	2.28
Landrate 3	R9.84	R11.22	R29.53	R33.66	54.92	62.61	2.00	2.28
Landrate 4			R9.57	R10.91	107.85	122.95	2.00	2.28
Landrate Dx*	R21.28	R24.26	* Landrate Dx charge includes the Environmental levy					

LANDRATE

Local Authority Rates

	Service charge (R/POD/day)		Network charge (R/POD/day)		Energy charge (c/k/Wh)		Environmental levy charge (c/k/Wh)	
	VAT excl.	VAT incl.	VAT excl.	VAT incl.	VAT excl.	VAT incl.	VAT excl.	VAT incl.
Landrate 1	R10.75	R12.26	R13.11	R14.95	59.95	68.34	2.00	2.28
Landrate 2	R10.75	R12.26	R20.17	R22.99	59.95	68.34	2.00	2.28
Landrate 3	R10.75	R12.26	R32.25	R36.77	59.95	68.34	2.00	2.28
Landrate 4			R10.45	R11.91	117.74	134.22	2.00	2.28
Landrate Dx*	R23.24	R26.49	* Landrate Dx charge includes the Environmental levy					

* Note that some rural networks with a voltage of 33 kV are specifically designated by Eskom as rural reticulation networks.

Non-Local Authority & Local Authority Rural Tariffs

continued...

LANDLIGHT

An electricity tariff that provides a subsidy to low-usage single phase supplies in rural areas, limited to 20A and has the following charges:

- a single c/kWh **active energy charge** inclusive of the environmental levy
- only offered for 20A supplies
- no fixed charges applicable
- applicable only on prepayment metering technology
- not applicable to local-authority supplies



For a description of the charges - refer pages 11 & 12

Non-Local Authority & Local Authority Rural Tariffs

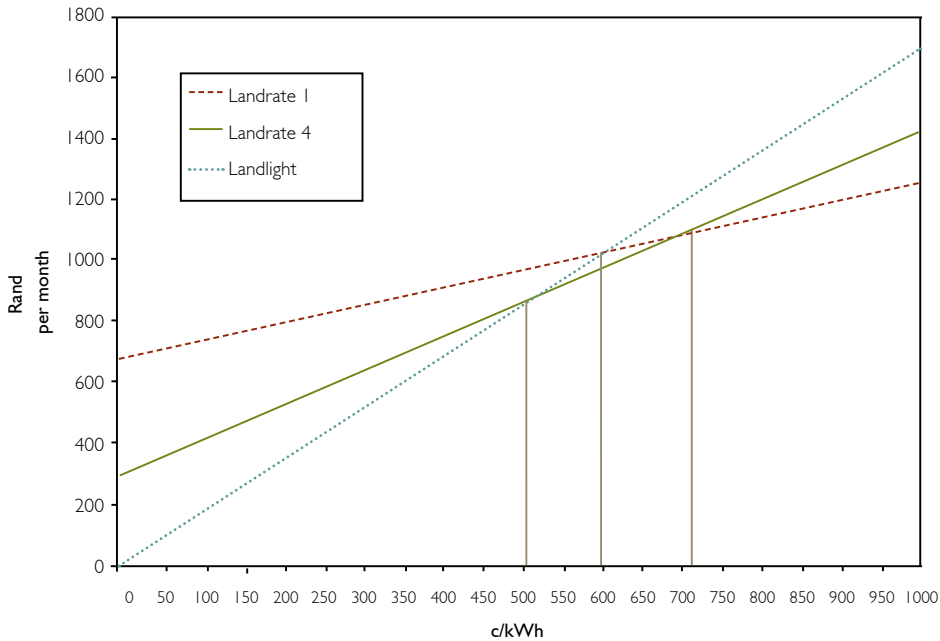
continued...



Non-Local Authority Rates

	Service charge (R/POD/day)	Network charge (R/POD/day)	Energy charge (c/kWh)		Environmental levy charge (c/kWh)	
			VAT excl.	VAT incl.	VAT excl.	VAT incl.
Landlight			166.12	189.38	2.00	2.28

Comparison of Landrate 1, Landrate 4 and Landlight



The break-even between Landlight, Landrate 4 and Landrate 1 is shown in the above graph.

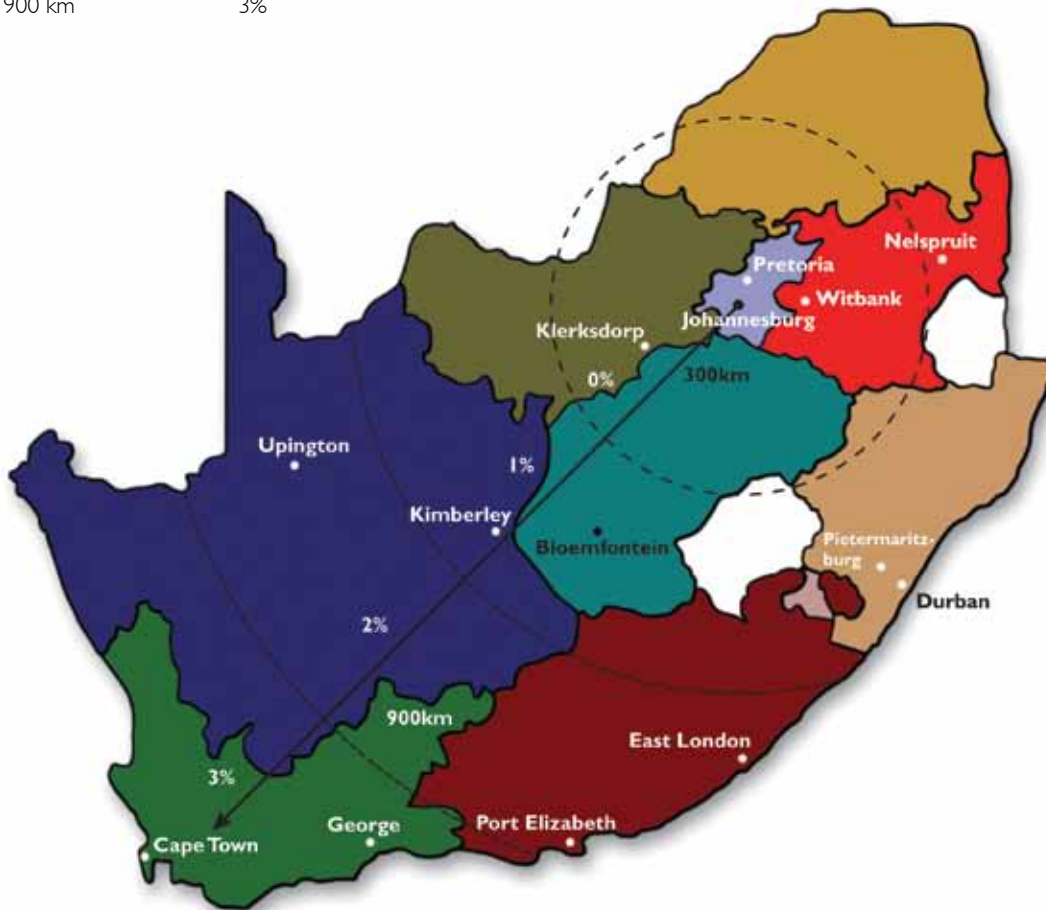
Note:

- If less than 501 kWh/month is used, Landlight is cheaper than Landrate 4.
- If less than 705 kWh/month is used, Landrate 4 is cheaper than Landrate 1.

Appendix A - Transmission zones and applicable percentages

The transmission network charge is subject to a transmission surcharge. Where transmission network charges are applicable they are shown inclusive of the surcharge. The surcharge rate depends on the distance from a central point in Johannesburg.

≤ 300 km	0%
> 300 km and ≤ 600 km	1%
> 600 km and ≤ 900 km	2%
> 900 km	3%



Appendix B - Treatment of public holidays for 2010/11

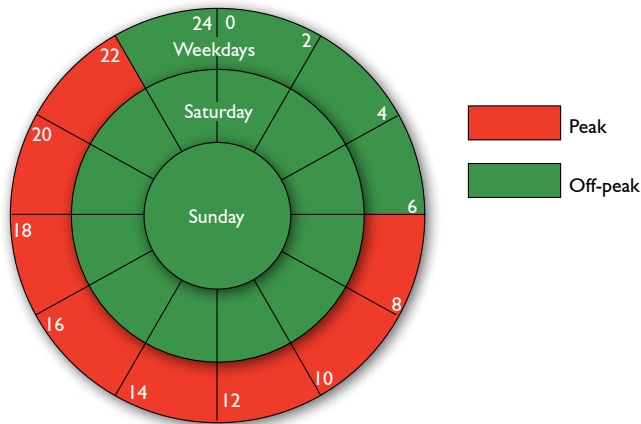
The table below indicates the treatment of public holidays in terms of the TOU tariffs, namely **Nightsave (Urban Large & Small)**, **Megaflex** and **Miniflex** tariffs for the period 1 April 2010 to 31 March 2011 for non-local-authority supplies. The holidays from 24 March 2011 until 16 June 2011 are shown to accommodate local authority supplies. The appropriate seasonally differentiated energy charges will be applicable on these days. Any unexpectedly announced public holiday will be treated as the day of the week on which it falls. The dates during which the Fifa World Cup will be held; i.e. 11 June 2010 to 11 July 2010 will not be treated as Public Holidays except for 16 June 2010.

*NOTE: All public holidays for the **Nightsave (Rural)** and **Ruraflex** tariffs will be treated as the day of the week on which it falls.*

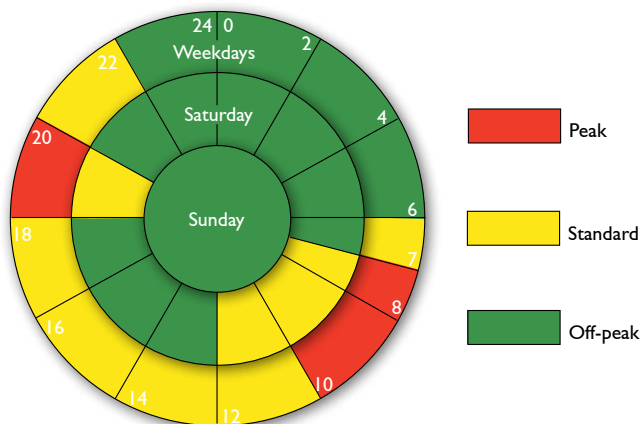
Date	Day	Actual day of the week	TOU day treated as	
			NIGHTSAVE URBAN (Small & Large)	MEGAFLEX MINIFLEX
2 April 2010	Good Friday	Friday	Sunday	Sunday
5 April 2010	Family Day	Monday	Sunday	Sunday
27 April 2010	Freedom Day	Tuesday	Sunday	Saturday
1 May 2010	Workers Day	Saturday	Sunday	Saturday
16 June 2010	Youth Day	Wednesday	Sunday	Saturday
9 August 2010	National Women's Day	Monday	Sunday	Saturday
24 September 2010	Heritage Day	Friday	Sunday	Saturday
16 December 2010	Day of Reconciliation	Thursday	Sunday	Saturday
25 December 2010	Christmas Day	Saturday	Sunday	Sunday
26 December 2010	Day of Goodwill	Sunday	Sunday	Sunday
27 December 2010	Public Holiday	Monday	Sunday	Saturday
1 January 2011	New Year's Day	Friday	Sunday	Sunday
21 March 2011	Human Rights Day	Monday	Sunday	Saturday
22 April 2011	Good Friday	Friday	Sunday	Sunday
25 April 2011	Family Day	Monday	Sunday	Sunday
27 April 2011	Freedom Day	Wednesday	Sunday	Saturday
1 May 2011	Workers Day	Sunday	Sunday	Sunday
2 May 2011	Public Holiday	Monday	Sunday	Saturday
16 June 2011	Youth Day	Thursday	Sunday	Saturday

Appendix C - Eskom's defined time of use periods

NIGHTSAVE Urban Large, **NIGHTSAVE** Urban Small and **NIGHTSAVE** Rural



MEGAFLEX **MINIFLEX** and **RURAFLEX**



Appendix D - Connection fees

The fees listed below are the minimum cash amounts payable. Additional charges based on allocated costs may be raised as per Eskom's Recovery of Capital policy.

Table 1 – Residential connection fees (non-Electrification)

Capacity	Conventional
≤ 80 A (single-phase)	R1 192,98 + VAT = R1 360,00
25 kVA (40 A per phase)	R16 973,68 + VAT = R19 350,00
50 kVA (80 A per phase)	R26 403,51 + VAT = R30 100,00
70 kVA (100 A per phase)	R49 736,84 + VAT = R56 700,00
100 kVA (150 A per phase)	R49 736,84 + VAT = R56 700,00

Table 2 – Residential connection fees (Electrification)

Capacity	Homelight I	Landlight
20 A	No charge	R1 192,98 + VAT = R1 360,00
60 A	R1 192,98 + VAT = R1 360,00	N/A

Table 3 – Rural connection fees

Capacity	Conventional
5 kVA (single-phase)	R8 728,07 + VAT = R9 950,00
16 kVA (single-phase)	R9 342,11 + VAT = R10 650,00^R
25 kVA (three-phase)	R9 605,26 + VAT = R10 950,00
32 kVA (dual-phase)	R9 429,82 + VAT = R10 750,00^R
50 kVA (three-phase)	R10 394,74 + VAT = R11 850,00
64 kVA (dual-phase)	R10 833,33 + VAT = R12 350,00
100 kVA (three-phase)	R15 175,44 + VAT = R17 300,00
100 kVA (dual-phase)	R15 175,44 + VAT = R17 300,00
200 kVA	R18 728,07 + VAT = R21 350,00
315 kVA	R22 938,60 + VAT = R26 150,00
500 kVA	R27 017,54 + VAT = R30 800,00
1 000 kVA	R36 315,79 + VAT = R41 400,00
> 1 000 kVA	The greater of R36 315,79 + VAT or 5% of allocated costs

Table 4 – Urban connection fees (Megaflex, Miniflex, Nightsave Urban (Large and Small), Businessrate)

Capacity	
≤ 80 A	R1 192,98 + VAT = R1 360,00
≥ 25 kVA	Full allocated connection costs paid upfront.

^R Rounded to the nearest Rand value

Appendix E - Application of NMD rules

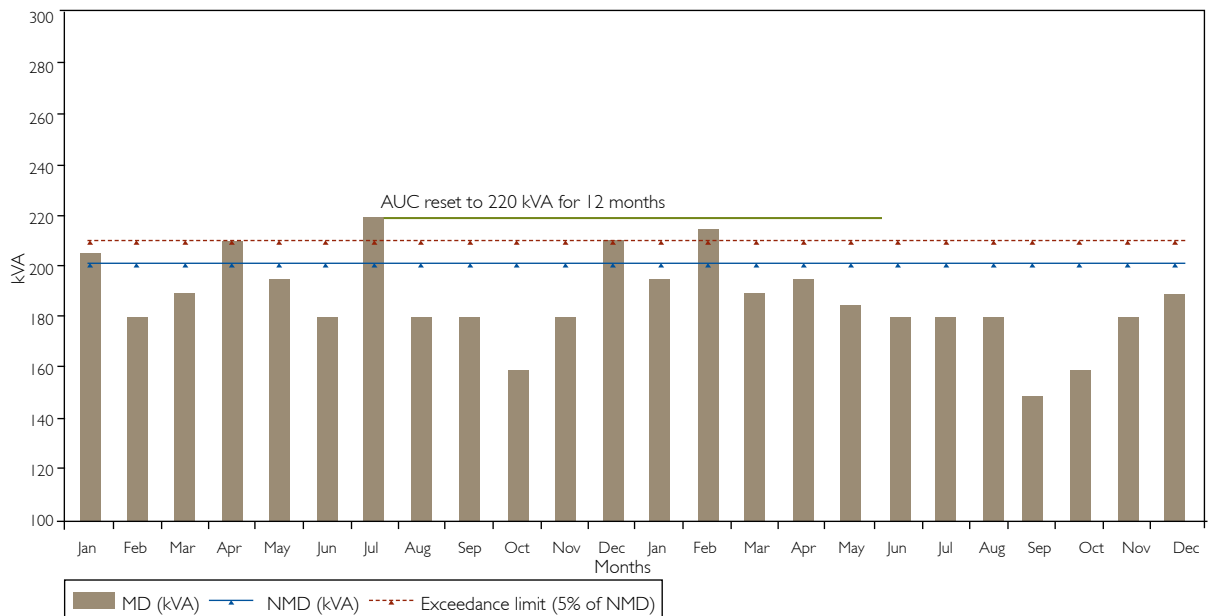
NMD rules impact the network access demand (kVA) related charges for Ruraflex, Nightsave rural, Megaflex, Nightsave Urban Small and Nightsave Urban Large tariffs. A copy of the rules and modelling tool can be found at www.eskom.co.za/tariffs. The following impacts the network access charge when the NMD is exceeded

- **Event number** - every time the NMD is exceeded (whether within or above exceedance limit) based on a rolling 12 months (i.e. previous 11 months from current month).
- **Exceeded amount** - any demand (in kVA) recorded which is above the NMD.
- **Excess NAC** - the exceeded amount (kVA) **times** the event number **times** applicable tariff NAC charge (i.e. Transmission network charge plus Distribution network access charge in Megaflex, Nightsave Urban Small and Large tariffs).

Scenario to demonstrate new NMD rules – applicable from 1 August 2009

- Customer on **Miniflex** tariff, taking supply at less than 500V and transmission zone >300 km and ≤600 km with an NMD of **200 kVA**. The scenario looks at the customer's demand pattern over a "historical" 24 month period to demonstrate the rolling 12 months period.
- Below are the results, i.e. the graph comparing the NMD, the 5% limit, the monthly MD and the AUC. The results sheet explains in detail how the customer is charged when the NMD, 5% limit or previous AUC are exceeded at any given period.

NMD comparison with MUC and 5% limit



Appendice E *continued...*

Results sheet

Year	Month	NMD	MD	MUC	AUC	Exceedance limit (5% of NMD)	Event number	Excess NAC	Exceeded kVA	NAC (R/kVA)	Excess NAC charge (R/kVA)	Total NAC (R/kVA)	Comments
YEAR 1 (2008)	Jan	200	205	205	200	210	1	No	5	R 2,257	N/A	R 2,257	1st free event, no excess NAC, AUC not reset
	Feb	200	180	200	200	210				R 2,202		R 2,202	
	Mar	200	190	200	200	210				R 2,202		R 2,202	
	Apr	200	210	210	200	210	2	No	10	R 2,312	N/A	R2,312	2nd free event, no excess NAC, AUC not reset
	May	200	195	200	200	210				R 2,202		R 2,202	
	Jun	200	180	200	200	210				R 2,202		R 2,202	
	Jul	200	220	220	220	210	3	Yes	20	R 2,422	R 661	R 3,083	5% limit exceeded, 3rd event i.e. NAC is 3x exceeded kVA. AUC reset MD > previous UC
	Aug	200	180	200	220	210				R 2,422		R 2,422	
	Sep	200	180	200	220	210				R 2,422		R 2,422	
	Oct	200	160	200	220	210				R 2,422		R 2,422	
	Nov	200	180	200	220	210				R 2,422		R 2,422	
	Dec	200	210	210	220	210	4	Yes	10	R 2,422	R 440	R 2,862	Within 5% limit but 4th event, NAC is 4x exceeded kVA. AUC not reset, MD < prev UC
YEAR 2 (2009)	Jan	200	195	200	220	210				R 2,422		R 2,422	
	Feb	200	185	200	220	210				R 2,422		R 2,422	
	Mar	200	190	200	220	210				R 2,422		R 2,422	
	Apr	200	215	215	220	210	4	Yes	15	R 2,422	R661	R 3,083	5% limit exceeded, NAC is 4X exceeded kVA. AUC not reset, MD < previous UC. Rolling 12 months has lapsed, 4th event in new year.
	May	200	185	200	220	210				R 2,422		R 2,422	
	Jun	200	180	200	220	210				R 2,422		R 2,422	
	Jul	200	180	200	215	210				R 2,367		R 2,367	12 months lapsed, AUC reset to 215 kVA.
	Aug	200	180	200	215	210				R 2,367		R 2,367	
	Sep	200	150	200	215	210				R 2,367		R 2,367	
	Oct	200	160	200	215	210				R 2,367		R 2,367	
	Nov	200	180	200	215	210				R 2,367		R 2,367	
	Dec	200	190	200	215	210				R 2,367		R 2,367	

Appendix F - Eskom's average price adjustment

Eskom's tariffs are adjusted on an annual basis.

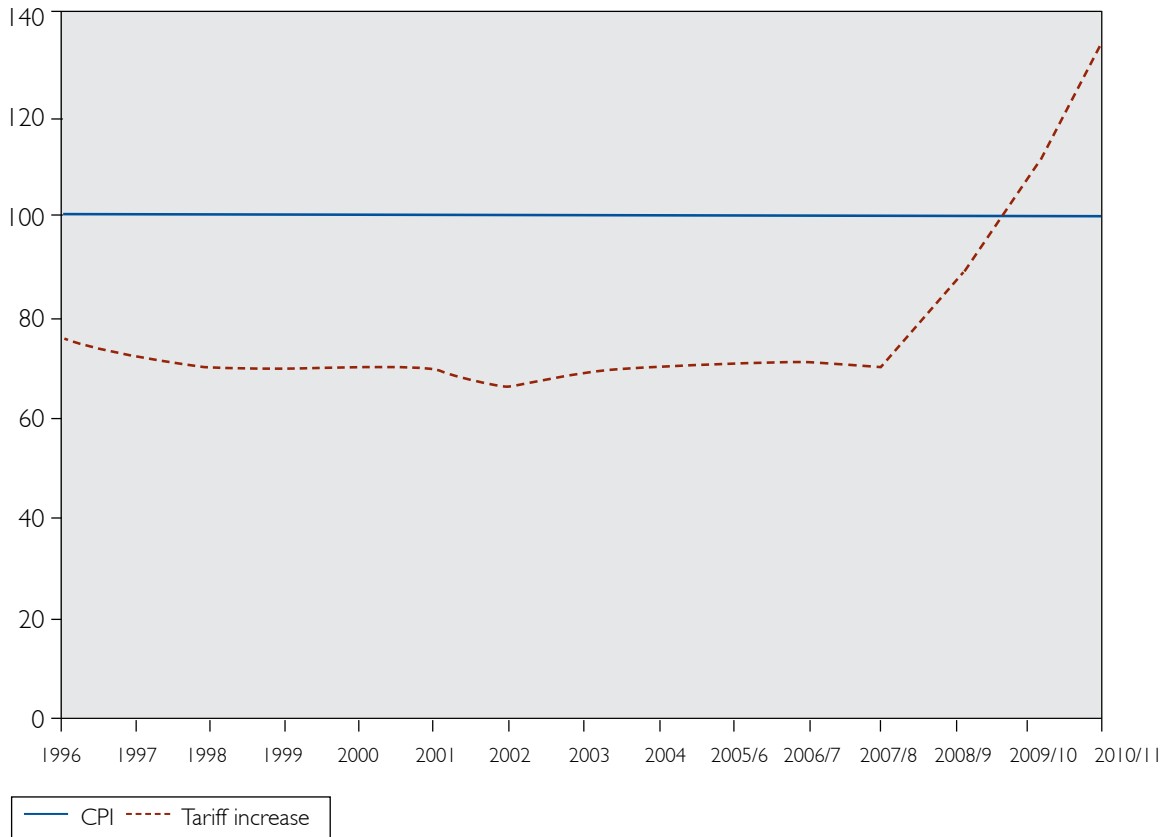
Eskom's average tariff adjustment for the last 15 years

Year	Average price adjustment	CPI
1 January 1996	4,00%	7,32%
1 January 1997	5,00%	8,62%
1 January 1998	5,00%	6,87%
1 January 1999	4,50%	5,21%
1 January 2000	5,50%	5,37%
1 January 2001	5,20%	5,70%
1 January 2002	6,20%	9,20%
1 January 2003	8,43%	5,80%
1 January 2004	2,50%	1,40%
1 January 2005	4,10%	3,42%
1 April 2006/7	5,10%	4,70%
1 April 2007/8	5,90%	7,10%
1 April 2008/9*	27,50%	10,30%
1 April 2009/10	31,30%	6,16%
1 April 2010/11	24,80%	5,40%

* Comprises two increases in 2008/9; average of 14.2% on 1 April 2008 and 34.2% on 1 July 2008.

Appendix F - continued...

Eskom's tariff adjustment as a percentage of CPI (cumulative graph) – base = 1990



Appendix G - Pricing of electricity

Eskom's average price for electricity is based on the overall cost of supply but, in order to determine tariffs, it is first necessary to break down the overall costs into relevant cost categories and cost drivers.

Cost drivers and the cost of providing electricity to customers varies according to:

- The quantity of electricity used and the period (time or season) when the electricity is used
- The size/capacity of the supply required
- The geographic location of the customer
- The voltage at which supply is provided
- The cost of connecting a supply

A totally cost-reflective tariff will reflect the cost drivers and the factors that could influence cost by taking into account the following:

- The time of use and seasonal variance of energy costs
- Unbundled costs for distribution and transmission networks and energy losses. These costs are impacted by:
 - the supply voltage
 - the density of the points of delivery
- Retail charges that reflect the size of the customer and the service provided
- A connection charge that reflects the location of the supply and the impact on upstream costs

The tariff applied depends on meter capability, billing functionality and logistics, tariff complexity and the impact of changes to existing tariffs. For more energy-intensive users of electricity, tariff structures tend to be more complex, whereas for users such as domestic customers tariffs are simpler.

A larger customer will have a much lower supply cost than a smaller customer. In Eskom, larger customers generally subsidise smaller customers. The reasons for the higher cost for small customers are as follows:

- As a ratio of overall consumption, smaller customers tend to use much more electricity in the more expensive peak periods and have a poorer load factor than larger customers.
- Significantly more network capacity is required at the lower voltage level (e.g. 500 V) to supply a smaller customer than is required to supply a larger customer (e.g. 132 kV). This means that more electrical networks have to be built, maintained and operated to supply smaller customers. Also, more electrical losses occur in the latter sector.

For Eskom, the overall price of electricity is regulated and is based on approved costs plus a return on investment as determined by the National Energy Regulator of South Africa. While Eskom's **average** price (total revenue/total consumption) is based on cost, **individual** price levels per customer or per customer class might not be cost-reflective. This is due to cost averaging, historical cross-subsidies and socio-economic factors such as the customer's ability to pay the determined price.

Appendix H - Billing

Estimated readings

Conventional meters are read at least once every three months. Estimated charges are raised in months during which no meter readings are taken and these are subsequently adjusted when actual consumption is measured.

Deposits

A security deposit covering three months' consumption is required.

Pro-rating of bills

Pro-rating takes place under the following circumstances:

- at times of price increase and seasonal charges
- where a billing period spans the price change period
- where readings for demand or energy are not measured

Pro-rating is done by taking into account the number of days in the billing period where the old rates are applicable and the number of days in the billing period where the new rates are applicable.

Example: In a billing period of 31 days, with 15 days billed at the old rate and 16 days billed at the new rate, consumption of 1000 kWh in total, consumption is pro-rated as follows:

$1000 \text{ kWh} \times 15/30 \times c/\text{kWh}$ (old rate)

$1000 \text{ kWh} \times 16/30 \times c/\text{kWh}$ (new rate)

The above gives an indication of pro-rating of consumption only. In other individual charges, pro-rating may slightly differ; however, all are based on the number of days.

