

Proposed Reverse Osmosis Plant at Hendrina Power Station, Mpumalanga



DRAFT BASIC ASSESSMENT REPORT



OPEN HOUSE
19 JULY 2011

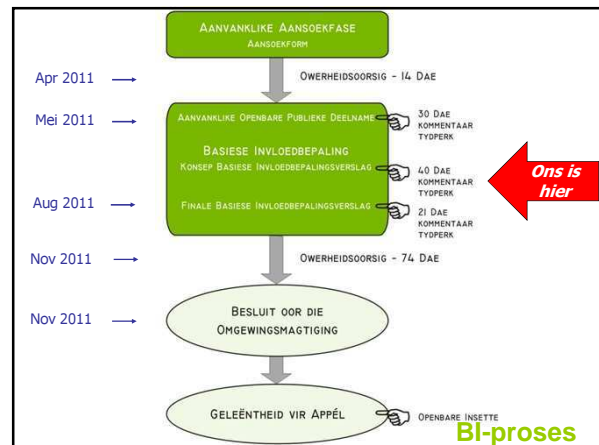
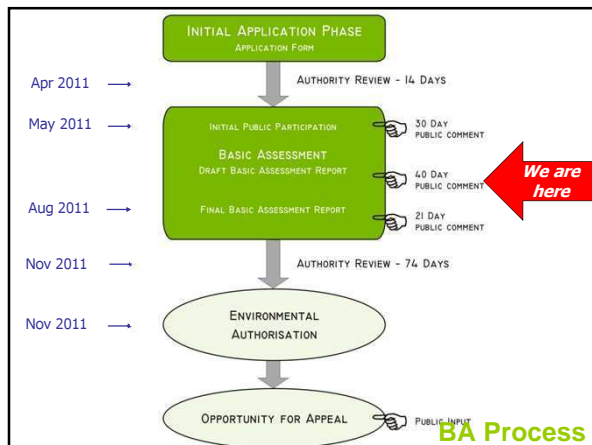
Beoogde Tru-Osmose-Aanlag by Hendrina Kragssentrale, Mpumalanga



KONSEP BASIESE INVLOEDBEPALINGSVERSLAG




OPE DAG
19 JULIE 2011




Proposed Reverse Osmosis (RO) Plant

- 5 000 m² building housing machinery
- Associated pipelines, with approximate lengths:
 - From the cooling water sedimentation basin to the proposed RO plant (approximately 100 m);
 - From the proposed RO plant to the demineralisation plant in the WTP (approximately 150 m);
 - From the proposed RO plant to the cooling water system (approximately 100 m); and
 - From the proposed RO plant to the effluent sumps at the WTP (approximately 130 m).



Beoogde Tru-osmose-aanleg (TO-aanleg)

- 5 000 m² gebou vir masjinerie
- Gepaardgaande pyplyne, met geskatte lengtes:
 - Vanaf die verkoelingswater-sedimentasiedam na die beoogde TO-aanleg (ongeveer 100 m);
 - Vanaf die beoogde TO-aanleg na die demineraliseringsaanleg by die WSW (ongeveer 150 m);
 - Vanaf die beoogde TO-aanleg na die verkoelingswaterstelsel (ongeveer 100 m); en
 - Vanaf die beoogde TO-aanleg na die opvangbakke vir afvalwater by die WSW (ongeveer 130 m).



Photograph of site / Fotograaf van terrein



aurecon

Summary of potential impacts of proposed RO Plant

	WITHOUT MITIGATION	WITH MITIGATION
CONSTRUCTION		
Local socio-economic	Low (+)	Low (+)
Composite assessment	Low (-)	Neutral
OPERATION		
Water resources	Low (+)	Low (+)
Visual impacts	Neutral	Neutral
Noise impacts	Neutral	Neutral
DECOMMISSIONING		
	No impact	No impact
CUMULATIVE		
	No impact	No impact

aurecon

Opsomming van moontlike impakte van die beoogde tru-osmose ontwikkeling

	SONDER MITIGASIE	MET MITIGASIE
KONSTRUKSIE		
Plaaslik sosio-ekonomies	Laag (+)	Laag (+)
Saamgestelde beoordeling	Laag (-)	Neutraal
BEDRYF		
Waterhulpbronne	Laag (+)	Laag (+)
Visuele impakte	Neutraal	Neutraal
Geraas-impakte	Neutraal	Neutraal
BUITEDIENSSTELLING		
	Geen impak nie	Geen impak nie
KUMULATIEF		
	Geen impak nie	Geen impak nie

aurecon

Summary of potential impacts of the No-go alternative

	WITHOUT MITIGATION	WITH MITIGATION
CONSTRUCTION		
	No impact	No impact
OPERATION		
Water resources	Low (-)	Low (-)
DECOMMISSIONING		
	No impact	No impact
CUMULATIVE		
	No impact	No impact

aurecon

Opsomming van moontlike impakte van die geen-ontwikkeling-alternatief

	SONDER MITIGASIE	MET MITIGASIE
KONSTRUKSIE		
	Geen impak nie	Geen impak nie
BEDRYF		
Waterhulpbronne	Laag (-)	Laag (-)
BUITEDIENSSTELLING		
	Geen impak nie	Geen impak nie
KUMULATIEF		
	Geen impak nie	Geen impak nie

aurecon

Summary of potential impacts cont.

- Only **one negative potential impact** (composite assessment) has been identified during the **construction phase** of the proposed development.
- **No negative impacts** were identified during the **operation and decommissioning phases** and **no cumulative impacts** were identified.
- **Positive impacts** on the socio-economic and water will result from the proposed development.
- Should the proposed project not proceed (i.e. the **no-go alternative**), there would be a continued **risk of negative impact on water resources**.
- It is the environmental practitioner's opinion that the proposed project in its preferred form is acceptable and indeed more beneficial than the "no-go" alternative.

aurecon

Opsomming van moontlike impakte: vervolg

- Slegs **een negatiewe moontlike impak** (saamgestelde beoordeling) is vir die **konstruksiefase** van die beoogde ontwikkeling geïdentifiseer.
- **Geen kumulatiewe impakte** of **negatiewe impakte** is vir die **bedryfs- of buitediensstellingsfasies** geïdentifiseer nie.
- Die beoogde ontwikkeling sal wel 'n **positiewe impak** op die sosio-ekonomie en op water hê.
- Indien die beoogde projek nie voortgegaan nie (i.e. die **geen-ontwikkeling-alternatief**), sal daar die voorgesette risiko wees dat **waterhulpbronne negatief beïnvloed** kan word.
- Die omgewingspraktisyn is van mening dat die beoogde projek in sy voorkeurformaat aanvaarbaar is en inderwaarheid beter as die alternatiewe is, naamlik die geen-ontwikkelings-alternatief.



Way Forward

- Provide comments on Draft BAR
 - Available, from 13 June 2011, at Pullenshope Public Library and on the Eskom (www.eskom.co.za/eia/ Hendrina RO plant) and Aurecon websites (<http://www.aurecongroup.com> follow the public participation links)
- Report will be updated & finalised
- 21 day comment period on final report & final report submitted to DEA
- DEA will either reject or approve the application
- I&APs will be notified of decision and will have opportunity to appeal



Pad Vorentoe

- Lewer kommentaar op die Konsep BIBV
 - Besikbaar vanaf 13 Junie 2011 by die Pullenshope Openbare Biblioteek, en die webtuistes van Eskom (www.eskom.co.za/eia/Hendrina RO plant) en Aurecon (<http://www.aurecongroup.com> (volg die "public participation"-skakels))
- Verslag sal opgedateer en gefinaliseer word
- 21 dae vir kommentaar op finale verslag & finale verslag by DOS ingedien word
- DOS sal aansoek goed- of afkeur
- B&GPe sal van die besluit in kennis gestel word en die geleentheid hê om appèl aan te teken



Comment on Draft BAR / Kommentaar op die Konsep BIBV

Comments on Draft BAR by **1 August 2011** /
Kommentaar op die Konsep BIBV teen **1 Augustus 2011**

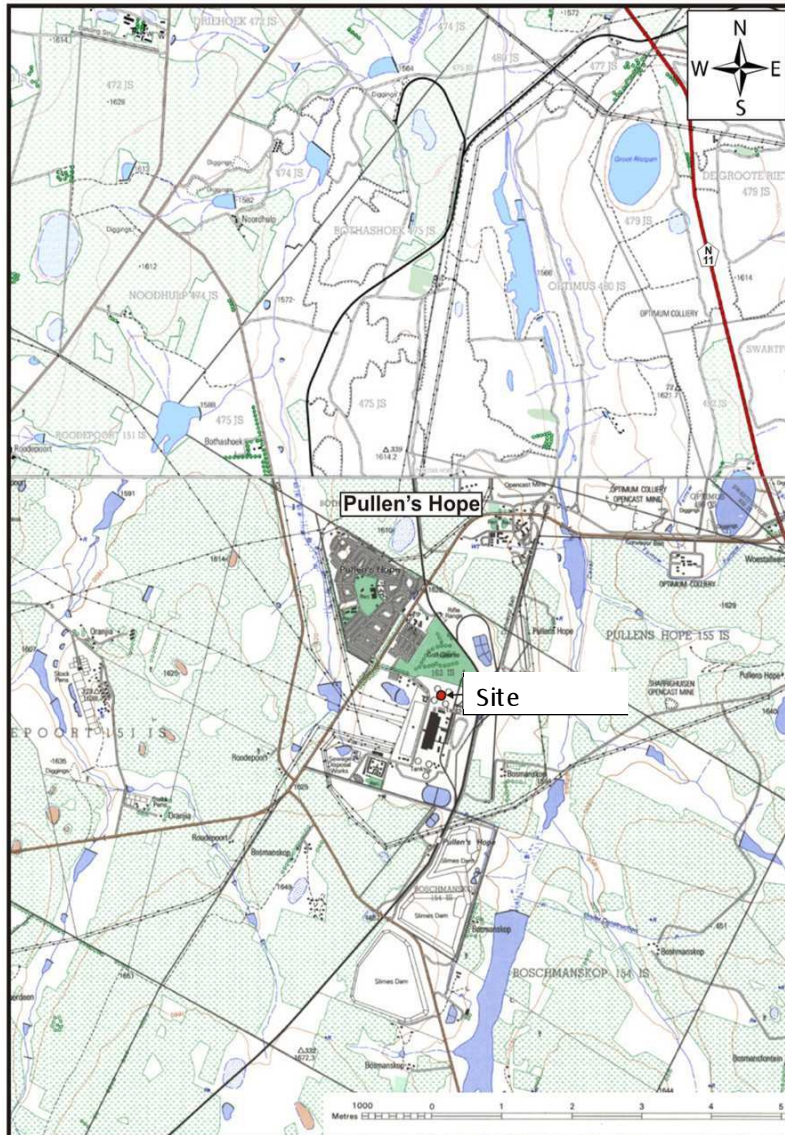
Aurecon

Louise Corbett / Brett Lawson
PO Box 494, Cape Town, 8000 /
Posbus 494, Kaapstad, 8000
T: (021) 481 2501
F: (021) 424 5588

Email / Epos: louise.corbett@arecongroup.com



Site location / Terrein



Aerial image / Terrein

