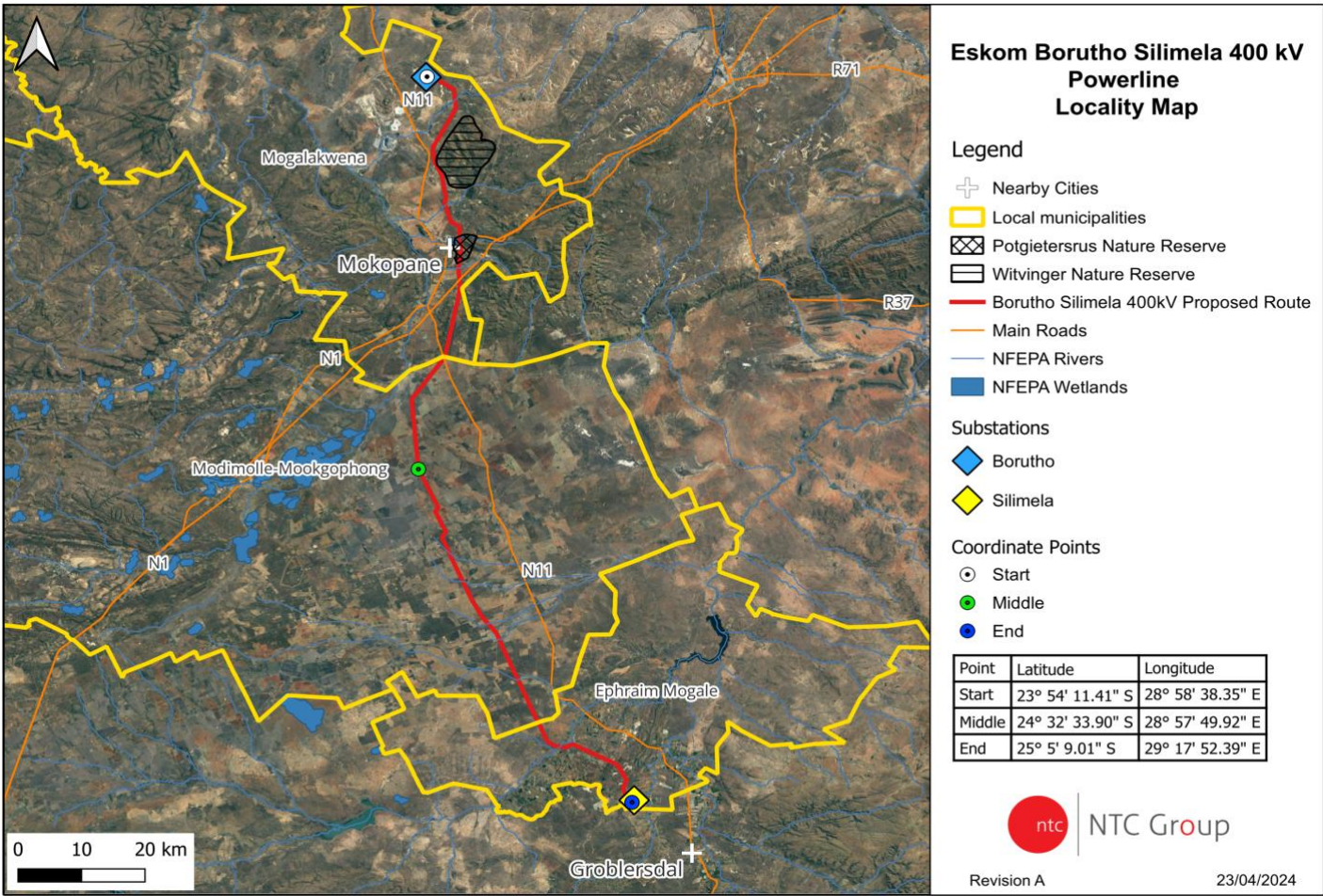


BASIC ASSESSMENT PROCESS FOR THE PROPOSED HIGHVELD NORTH-WEST AND LOWVELD STRENGTHENING PROJECT: EXTENTION OF BORUTHO AND SILIMELA SUBSTATIONS AND DEVELOPMENT OF BORUTHO-SILIMELA 400 KV TRANSMISSION LINE AND ASSOCIATED INFRASTRUCTURE, WITHIN THE LIMPOPO PROVINCE



Notice is hereby given in terms of the National Environmental Management Act, No. 107 of 1998 (NEMA), Environmental Impact Assessment (EIA) Regulations 2014 (as amended) (GN R.982), and Water Use Licence Application in Terms of Section 21(i) and (c) of the National Water Act, (1998) for the intention of Eskom Holdings Limited SOC Limited (Eskom) to construction of a 400kV power line, which triggers Listing Notice 1 (GN R.983), Listing Notice 2 (GN 984) and Listing Notice 3 (GN R.985), as amended, and will therefore require an Basic Assessment (BA) and a Water Use License Application (WULA) processes to be undertaken. The proposed project is located within the Electricity Grid Infrastructure (EGI) Corridor referred to as the International Corridor, therefore triggers the Basic Assessment Process in terms of the Environmental Impact Assessment Regulations, 2014 (as amended) promulgated in terms of Chapter 5 of the National Environmental Management Act 1998 (Act No 107 of 1998).

This notice serves to inform you of the Environmental Authorisation application for the proposed construction of a 400kV power line between the existing Borutho and Silimela Substations, approximately 150km, Limpopo Province.

Eskom has appointed NTC as an independent Environmental Assessment Practitioner to undertake the required Integrated environmental Application process for the Borutho-Silimela 400kV Powerline. The competent authority will be the National Department of Forestry, Fisheries and the Environment (DFFE), the Provincial Limpopo, Agricultural, Rural Development, Land and Environmental Affairs will be the commenting authority.

PROJECT DESCRIPTION

Eskom is proposing to construct a 400kV power line between the existing Borutho and Silimela Substations, the powerline is approximately 150km in extent.

PROJECT LOCATION

The proposed 400kV powerline will transverse three Local Municipalities, namely, Ephraim Mogale, Modimolle-Mookgophong and Mogalakwena within the Limpopo Province. The power line will transvers the following properties:

PUBLIC COMMENT

To register as an interested and/or affected party (I&AP) and/or obtain additional information. Please submit your name, contact details (telephone number, postal address and/or email address) and the interest which you have in the application to NTC Group as per the details below:

- NTC Group website: www.ntcgroup.co.za
- On request from NTC.
- ppp@ntcgroup.co.za / karabo@ntcgroup.co.za

In terms of the Protection of the Personal Information Act, 2013 (Act 4 of 2013) as amended, you hereby declare and confirm that you as an interested and affected party providing information, consent for your information to be gathered,

<div><div>▪ Portion 0 of Farm Ga Puka</div><div>▪ Portion 0 of Farm Gillimberg 861 LR</div><div>▪ Portion 7 of Farm Gillimberg 861 LR</div><div>▪ Portion 9 of Farm Gillimberg 861 LR</div><div>▪ Portion 17 of Farm Gillimberg 861 LR</div><div>▪ Portion 8 of Farm Gillimberg 861 LR</div><div>▪ Portion 6 of Farm Gillimberg 861 LR</div><div>▪ Portion 30 of Farm Gillimberg 861 LR</div><div>▪ Portion 10 of Farm Gillimberg 861 LR</div><div>▪ Portion 29 of Farm Gillimberg 861 LR</div><div>▪ Portion 47 of Farm Gillimberg 861 LR</div><div>▪ Portion 1521 of Farm Piet Potgietersrust KS</div></div>	<div><div>▪ Portion 1427 of Farm Piet Potgietersrust KS</div><div>▪ Portion 1426 of Farm Piet Potgietersrust KS</div><div>▪ Portion 1520 of Farm Piet Potgietersrust KS</div><div>▪ Portion 1537 of Farm Piet Potgietersrust KS</div><div>▪ Portion 1483 of Farm Piet Potgietersrust KS</div><div>▪ Portion 1440 of Farm Piet Potgietersrust KS</div><div>▪ Portion 1439 of Farm Piet Potgietersrust KS</div><div>▪ Portion 48 of Farm Piet Potgietersrust KS</div></div>	<div><div>▪ Portion 49 of Farm Piet Potgietersrust KS</div><div>▪ Portion 2 of Farm Weltevrede</div><div>▪ Portion 9 of Farm De Hoop</div><div>▪ Portion 1 of Farm De Hoop</div><div>▪ Portion 6 of Farm Klavervally</div><div>▪ Portion 2 of Farm Ceres</div><div>▪ Portion 7 of Farm Geluksfontein</div><div>▪ Portion 5 of Farm Springhaan Slaagte</div><div>▪ Portion 0 of Farm Rondeberg</div><div>▪ Portion 7 of Farm Conterberg</div><div>▪ Portion 17 of Farm Conterberg</div><div>▪ Portion 1 of Farm Weltevrede</div><div>▪ Portion 9 of Farm Conterberg</div><div>▪ Portion 11 of Farm Haarde Kraal</div><div>▪ Portion 5 of Farm Klavervally</div><div>▪ Portion 1 of Farm Doornlaagte</div></div>
--	---	--

stored and distributed for the purpose of this application. Please note that contact details provided will not be distributed for public review, i.e. contact details will be concealed, however, all contact details will only be included in the Draft BAR and Final BAR which will be submitted only to the competent authority, which in this case is the DFFE.

The draft BAR will be made available for public from the the 24 April 2024 to the 27 May 2024 at the following Venues:

- NTC Group website: www.ntcgroup.co.za
- Borutho Power Station Security Gate/ Entrance;
- Seshego Local Library;
- Mogalakwena Public Library;
- and Groblersdal Public Libraries; and
- On request from NTC.

Public Participation office

NTC GROUP (PTY) LTD

CDH Building | 1 Protea Place | Sandton | 2031

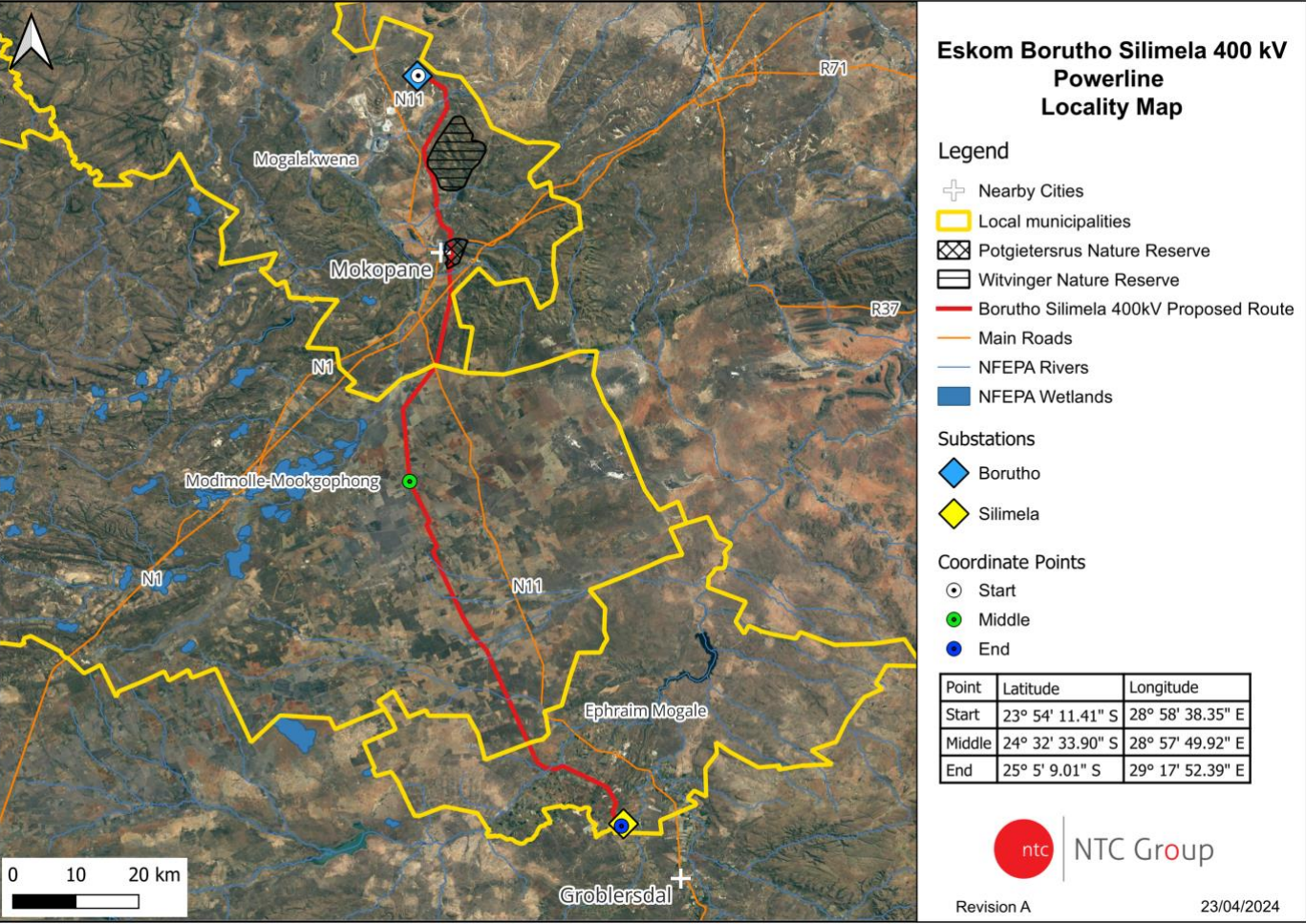
Tel.: (011) 462 2022/073 722 8882

E-mail: ppp@ntcgroup.co.za

Contact Person: Tebogo Mapinga/ Karabo Mashabela

<div>▪ Portion 1489 of Farm Piet Potgietersrust KS</div> <div>▪ Portion 1567 of Farm Piet Potgietersrust KS</div> <div>▪ Portion 1435 of Farm Piet Potgietersrust KS</div> <div>▪ Portion 1566 of Farm Piet Potgietersrust KS</div> <div>▪ Portion 1486 of Farm Piet Potgietersrust KS</div> <div>▪ Portion 1443 of Farm Piet Potgietersrust KS</div> <div>▪ Portion 1446 of Farm Piet Potgietersrust KS</div> <div>▪ Portion 1533 of Farm Piet Potgietersrust KS</div> <div>▪ Portion 1491 of Farm Piet Potgietersrust KS</div> <div>▪ Portion 1517 of Farm Piet Potgietersrust KS</div> <div>▪ Portion 1481 of Farm Piet Potgietersrust KS</div> <div>▪ Portion 1482 of Farm Piet Potgietersrust KS</div> <div>▪ Portion 1539 of Farm Piet Potgietersrust KS</div> <div>▪ Portion 1529 of Farm Piet Potgietersrust KS</div> <div>▪ Portion 1474 of Farm Piet Potgietersrust KS</div> <div>▪ Portion 1568 of Farm Piet Potgietersrust KS</div> <div>▪ Portion 1438 of Farm Piet Potgietersrust KS</div> <div>▪ Portion 1432 of Farm Piet Potgietersrust KS</div> <div>▪ Portion 0 of Farm Gegund</div>	<div>▪ Portion 52 of Farm Piet Potgietersrust KS</div> <div>▪ Portion 17 of Farm Piet Potgietersrust KS</div> <div>▪ Portion 98 of Farm Piet Potgietersrust KS</div> <div>▪ Portion 100 of Farm Piet Potgietersrust KS</div> <div>▪ Portion 144 of Farm Piet Potgietersrust KS</div> <div>▪ Portion 41 of Farm Piet Potgietersrust KS</div> <div>▪ Portion 40 of Farm Piet Potgietersrust KS</div> <div>▪ Portion 58 of Farm Uitloop 3</div> <div>▪ Portion 46 of Farm Gillimberg 861 LR</div> <div>▪ Portion 59 of Farm Uitloop 3</div> <div>▪ Portion 55 of Farm Uitloop 3</div> <div>▪ Portion 62 of Farm Piet Potgietersrust KS</div> <div>▪ Portion 35 of Farm Piet Potgietersrust KS</div> <div>▪ Portion 175 of Farm Uitloop 3</div> <div>▪ Portion 57 of Farm Piet Potgietersrust KS</div> <div>▪ Portion 140 of Farm Piet Potgietersrust KS</div> <div>▪ Portion 80 of Farm Piet Potgietersrust KS</div> <div>▪ Portion 75 of Farm Piet Potgietersrust KS</div> <div>▪ Portion 73 of Farm Piet Potgietersrust KS</div> <div>▪ Portion 47 of Farm Piet Potgietersrust KS</div> <div>▪ ortion 1 of Farm Rondon</div>	<div>▪ Portion 2 of Farm Rondeberg</div> <div>▪ Portion 2 of Farm Mooigelegen</div> <div>▪ Portion 3 of Farm De Hoop</div> <div>▪ Portion 3 of Farm Doornstock</div> <div>▪ Portion 1 of Farm Rondeberg</div> <div>▪ Portion 23 of Farm Conterberg</div> <div>▪ Portion 3 of Farm De Bults Punt</div> <div>▪ Portion 4 of Farm De Bults Punt</div> <div>▪ Portion 3 of Farm Springhaa Nslaagte</div> <div>▪ Portion 8 of Farm De Hoop</div> <div>▪ Portion 0 of Farm Springhaa Nslaagte</div> <div>▪ Portion 2 of Farm Oranjefon Tein</div> <div>▪ Portion 3 of Farm Oranjefon Tein</div> <div>▪ Portion 5 of Farm Conterberg</div> <div>▪ Portion 12 of Farm Springhaa Nslaagte</div> <div>▪ Portion 7 of Farm Klavervalley</div> <div>▪ Portion 1 of Farm Doornstock</div> <div>▪ Portion 10 of Farm Conterberg</div> <div>▪ Portion 3 of Farm Ceres</div> <div>▪ Portion 4 of Farm Hartebeest Fontein</div> <div>▪ Portion 1 of Farm Haakdoorn Kuil</div> <div>▪ Portion 0 of Farm Rondon</div> <div>▪ Portion 3 of Farm Klipgat</div> <div>▪ Portion 0 of Farm Knoppiesdo Ornboom</div> <div>▪ Portion 0 of Farm Zoetfontein</div> <div>▪ Portion 0 of Farm Haardekraal</div> <div>▪ Portion 4 of Farm Klavervalley</div> <div>▪ Portion 0 of Farm Doornlaagte</div> <div>▪ Portion 8 of Farm Geluksfontein</div> <div>▪ Portion 16 of Farm Conterberg</div> <div>▪ Portion 1 of Farm Mooigelegen</div>
---	---	---

SEO SE HLOKEGAGO BAKENG SA GORE O KGONE GO HLAHLOBJA GO TSENELA PROJEKE YEO E ŠIŠINTŠWEGO YA GO MATLAFATŠA *HIGHVELD NORTH-WEST* LE *LOWVELD*: GO KATOLOŠWA GA DITEIŠENE TŠA BORUTHO LE SILIMELA, GAPE LE GO AGWA GA DILO KAMOKA TŠEO DI AKARETŠWAGO GE GO AGIWA DITHAPO TŠA MOHLAGASE (POWER LINE) YA 400KV, PROFENSENG YA LIMPOPO



Tsebišo e fiwa go ya ka Molao wa Bosetšhaba wa Taolo ya Tikologo, No. 107 wa 1998 (NEMA), Melawana ya Tekolo ya Kamego ya Tikologo (EIA) ya 2014 (bjalo ka ge e fetošitšwe) (GN R.982), le Kgopelo ya Laesense ya Tšhomišo ya Meetse go ya ka Melao ya Karolo 21(i) le (c) ya Molao wa Meetse wa Bosetšhaba, (1998) ka maikemišetšo a *Eskom Holdings Limited SOC Limited* (Eskom) a go aga dithapo tša mohlagase (*power line*) wa 400kV, wo o hlohleletšago Tsebišo ya Lenaneo 1 (GN R.983), Tsebišo ya Lenaneo 2 (GN 984) le Tsebišo ya Lenaneo 3 (GN R.985), bjalo ka ge e fetošitšwe, gomme ka fao e tla nyaka gore ditshepedišo tša Tekolo ya Motheo (BA) le Kgopelo ya Laesense ya Tšhomišo ya Meetse (WULA) di dirwe. Protšeke ye e šišintšwego e tloba lefelong la Mohlagase (EGI) leo le tsebjago e le lefelo la Boditšhabatšhaba, ke ka fao e nyakago gore go dirwe tekolo go ya ka Melawana ya Tekolo ya Kamego ya Tikologo, 2014 (bjalo ka ge e fetošitšwe) yeo e tsebagadišwego go ya ka Kgao 5 ya Molao wa Taolo ya Tikologo ya Bosetšhaba wa 1998 (Molao No 107 wa 1998).

Tsebišo ye ke ya go go tsebiša ka ga kgopelo ya go hwetša Tumelelo ya go aga ye e šišintšwego ya dithapo tša mohlagase (*power line*) wa 400kV magareng ga diteišene tše di lego gona tša Borutho le Silimela, yeo e ka akaretšago tikologo e lakanago le 150km, Profenseng ya Limpopo.

Eskom e kgethile NTC gore e be mošomi yo a ikemetšego wa go lekola tikologo le go dira kgopelo ye e nyakegago ya tikologo ye e kopantšwego ya dithapo tša mohlagase (*power line*) wa 400kV wa Borutho-Silimela. Mokgatlo wo o nago le matla a bolaodi e tla ba Kgoro ya Bosetšhaba ya Dithokgwa, Boreadihlapi le tša Tikologo (DFFE), ba Profense ya Limpopo, ba tša Temo, Tlhabollo ya Dinagamagae, ba tša Merero ya naga le Tikologo, ba tla ba le matla a go fana ka dikakanyo.

MABAPI LE PROTŠEKE YE:

Eskom e šišinya go aga dithapo tša mohlagase (*power line*) wa 400kV magareng ga deteišene tše nyenyane tša Borutho le Silimela, dithapo tšeo tša mohlagase (*power line*) di ka ba monabo wa 150km.

LEFELO LA PROTŠEKE:

Dithapo tša mohlagase (*power line*) wa 400kV tšeo di šišintšwego di tlo putla Mebasepala e meraro, e lego wa, Ephraim Mogale, Modimolle-Mookgophong le wa Mogalakwena ka go Profense ya Limpopo. Dithapo tša mohlagase (*power line*) di tlo putla ka gare ga mafelo a latelago:

<ul style="list-style-type: none">Karolo 0 ya Polase Ga PukaKarolo 0 ya Polase Gillimberg 861 LRKarolo 7 ya Polase Gillimberg 861 LRKarolo 9 ya Polase Gillimberg 861 LRKarolo 17 ya Polase Gillimberg 861 LR	<ul style="list-style-type: none">Karolo 1427 ya Polase Piet Potgietersrust KSKarolo 1426 ya Polase Piet Potgietersrust KSKarolo 1520 ya Polase Piet Potgietersrust KSKarolo 1537 ya Polase Piet Potgietersrust KSKarolo 1483 ya Polase Piet Potgietersrust KS	<ul style="list-style-type: none">Karolo 49 ya Polase Piet Potgietersrust KSKarolo 2 ya Polase WeltevredeKarolo 9 ya Polase De HoopKarolo 1 ya Polase De HoopKarolo 6 ya Polase KlavervallyKarolo 2 ya Polase CeresKarolo 7 ya Polase GeluksfonteinKarolo 5 ya Polase Springhaan Slaagte
---	--	---

Mafelo ke a latelago:

- Go tloga: 23° 54'24.97 S; 28° 58'41.96 E;
- Magareng: 24° 31'21.81 S; 28° 57'45.01 E; le
- Go felela mo: 25° 05'13.31 S; 29° 17'57.47 E.

BAKENG SA SETŠHABA:

Ge o nyaka go ingwadiša bjalo ka motho goba mokgatlo wo o nago le kgahlego goba wo o amegago, le go hwetša boitšebiso bjo bo oketšegilego, hle romela leina la gago, le boitsebišo bja ka moo re ka ikgokaganyago le wena ka gona (e ka ba dinomoro tša mogala, email aterese le/goba aterese ya moo o dulago gona) le lebaka leo o nago le kgahlego ya go dira kgopelo go sehlopha sa NTC go ya le ka boitsebišo bjo bo lego ka mo tlase:

- Weposaete ya sehlopha sa NTC: www.ntcgroup.co.za
- Ka kgopelo go tšwa go NTC.

- Go ya le ka Tšhireletšo ya Molao wa Boitsebišo bja Motho wa, 2013 (Molao wa 4 wa 2013) ka ge o fetošitšwe, o tsebagatša le go tiišetša gore wena bjalo ka mokgatlo wo o nago le kgahlego le wo o amegago wo o fanago ka boitsebišo, o dumelela gore boitsebišo bja gago bo kgoboketšwe, bo bolokwe le go phatlalatšwa bakeng sa morero wa kgopelo ye. Boitsebišo bja gago bo ka se išwe fao batho bohle ba tla bo bonago, ka mohlala: boitsebišo bja go ikgokaganya le wena bo ka se utullwe, lega go le bjalo, boitsibišo kamoka bja go ikgokaganya le wena bo tla akaretšwa ka go *Draft BAR* le *Final BAR* gomme bja romelwa go mokgatlo wa maleba, maemong a e tla ba ba DFFE.

- Weposaeteng ya sehlopha sa NTC: www.ntcgroup.co.za
- Keiting ya Bahlapetši ya Borutho Power Station;
- Laeprari ya Seshego;
- Laeprari ya Satšhaba ya Mogalakwena;
- Dilaepirari tša Satšhaba tša Groblersdal; le
- Ka kgopelo go tšwa go NTC.

Le ka ikgokaganya le: **Tebogo Mapinga/ Karabo Mashabela**

<ul style="list-style-type: none"> ▪ Karolo 8 ya Polase Gillimberg 861 LR ▪ Karolo 6 ya Polase Gillimberg 861 LR ▪ Karolo 30 ya Polase Gillimberg 861 LR ▪ Karolo 10 ya Polase Gillimberg 861 LR ▪ Karolo 29 ya Polase Gillimberg 861 LR ▪ Karolo 47 ya Polase Gillimberg 861 LR ▪ Karolo 1521 ya Polase Piet Potgietersrust KS ▪ Karolo 1489 ya Polase Piet Potgietersrust KS ▪ Karolo 1567 ya Polase Piet Potgietersrust KS ▪ Karolo 1435 ya Polase Piet Potgietersrust KS ▪ Karolo 1566 ya Polase Piet Potgietersrust KS ▪ Karolo 1486 ya Polase Piet Potgietersrust KS ▪ Karolo 1443 ya Polase Piet Potgietersrust KS ▪ Karolo 1446 ya Polase Piet Potgietersrust KS ▪ Karolo 1533 ya Polase Piet Potgietersrust KS ▪ Karolo 1491 ya Polase Piet Potgietersrust KS ▪ Karolo 1517 ya Polase Piet Potgietersrust KS ▪ Karolo 1481 ya Polase Piet Potgietersrust KS ▪ Karolo 1482 ya Polase Piet Potgietersrust KS ▪ Karolo 1539 ya Polase Piet Potgietersrust KS ▪ Karolo 1529 ya Polase Piet Potgietersrust KS ▪ Karolo 1474 ya Polase Piet Potgietersrust KS ▪ Karolo 1568 ya Polase Piet Potgietersrust KS ▪ Karolo 1438 ya Polase Piet Potgietersrust KS ▪ Karolo 1432 ya Polase Piet Potgietersrust KS ▪ Karolo 0 ya Polase Gegund 	<ul style="list-style-type: none"> ▪ Karolo 1440 ya Polase Piet Potgietersrust KS ▪ Karolo 1439 ya Polase Piet Potgietersrust KS ▪ Karolo 48 ya Polase Piet Potgietersrust KS ▪ Karolo 52 ya Polase Piet Potgietersrust KS ▪ Karolo 17 ya Polase Piet Potgietersrust KS ▪ Karolo 98 ya Polase Piet Potgietersrust KS ▪ Karolo 100 ya Polase Piet Potgietersrust KS ▪ Karolo 144 ya Polase Piet Potgietersrust KS ▪ Karolo 41 ya Polase Piet Potgietersrust KS ▪ Karolo 40 ya Polase Piet Potgietersrust KS ▪ Karolo 58 ya Polase Uitloop 3 ▪ Karolo 46 ya Polase Gillimberg 861 LR ▪ Karolo 59 ya Polase Uitloop 3 ▪ Karolo 55 ya Polase Uitloop 3 ▪ Karolo 62 ya Polase Piet Potgietersrust KS ▪ Karolo 35 ya Polase Piet Potgietersrust KS ▪ Karolo 175 ya Polase Uitloop 3 ▪ Karolo 57 ya Polase Piet Potgietersrust KS ▪ Karolo 140 ya Polase Piet Potgietersrust KS ▪ Karolo 80 ya Polase Piet Potgietersrust KS ▪ Karolo 75 ya Polase Piet Potgietersrust KS ▪ Karolo 73 ya Polase Piet Potgietersrust KS ▪ Karolo 47 ya Polase Piet Potgietersrust KS ▪ ortion 1 ya Polase Random 	<ul style="list-style-type: none"> ▪ Karolo 0 ya Polase Rondeberg ▪ Karolo 7 ya Polase Conterberg ▪ Karolo 17 ya Polase Conterberg ▪ Karolo 1 ya Polase Weltevrede ▪ Karolo 9 ya Polase Conterberg ▪ Karolo 11 ya Polase Haarde Kraal ▪ Karolo 5 ya Polase Klavervalley ▪ Karolo 1 ya Polase Doornlaagte ▪ Karolo 2 ya Polase Rondeberg ▪ Karolo 2 ya Polase Mooigelegen ▪ Karolo 3 ya Polase De Hoop ▪ Karolo 3 ya Polase Doornstock ▪ Karolo 1 ya Polase Rondeberg ▪ Karolo 23 ya Polase Conterberg ▪ Karolo 3 ya Polase De Bults Punt ▪ Karolo 4 ya Polase De Bults Punt ▪ Karolo 3 ya Polase Springhaa Nslaagte ▪ Karolo 8 ya Polase De Hoop ▪ Karolo 0 ya Polase Springhaa Nslaagte ▪ Karolo 2 ya Polase Oranjefon Tein ▪ Karolo 3 ya Polase Oranjefon Tein ▪ Karolo 5 ya Polase Conterberg ▪ Karolo 12 ya Polase Springhaa Nslaagte ▪ Karolo 7 ya Polase Klavervalley ▪ Karolo 1 ya Polase Doornstock ▪ Karolo 10 ya Polase Conterberg ▪ Karolo 3 ya Polase Ceres ▪ Karolo 4 ya Polase Hartebeest Fontein ▪ Karolo 1 ya Polase Haakdoorn Kuil ▪ Karolo 0 ya Polase Random ▪ Karolo 3 ya Polase Klipgat ▪ Karolo 0 ya Polase Knoppiesdo Ornboom ▪ Karolo 0 ya Polase Zoetfontein ▪ Karolo 0 ya Polase Haardekraal ▪ Karolo 4 ya Polase Klavervalley ▪ Karolo 0 ya Polase Doornlaagte ▪ Karolo 8 ya Polase Geluksfontein ▪ Karolo 16 ya Polase Conterberg ▪ Karolo 1 ya Polase Mooigelegen
---	--	---

BACKGROUND INFORMATION DOCUMENT

BASIC ASSESSMENT PROCESS FOR THE PROPOSED HIGHVELD NORTH-WEST AND LOWVELD STRENGTHENING PROJECT: EXTENSION OF BORUTHO AND SILIMELA SUBSTATIONS AND DEVELOPMENT OF BORUTHO-SILIMELA 400 KV TRANSMISSION LINE AND ASSOCIATED INFRASTRUCTURE, WITHIN THE LIMPOPO PROVINCE

Eskom Holdings SOC Limited (herein referred to as Eskom) has appointed NTC Environmental (Pty) Ltd as an independent Environmental Assessment Practitioner (EAP) to undertake a Basic Assessment (BA) Process for the proposed construction of the Borutho-Silimela 400kV powerline and its associated infrastructure. The length of the powerline is approximately 150km. The proposed power line is located between the Borutho Substation on farm Gillimberg 861 in Mokopane and runs south to the Silimela Substation on farm Loskop Noord 12, near Marble Hall within the Lepelle-Nkumpi, Mogalakwena, Modimolle-Mookgophong and Ephriam Mogale Local Municipalities, Limpopo Province. The construction of the power line will aid Eskom in strengthening the power supply within Limpopo Province.

PURPOSE OF THIS DOCUMENT

The purpose of this Background Information Document (BID) is to provide background information on the Integrated Environmental Process undertaken for the project. In addition to supplying information about the project, this BID will also serve the following purposes:

- Provide information on the Process to be followed to obtain an Environmental Authorisation and Water Use License Application (WULA).
- Details of how you can become involved in the Basic Assessment process Interested & Affected Parties (I&AP), receive information, or raise issues and/or concerns.

PROJECT SCOPE

Transmission scope of work:

- Extend Borutho Substation to accommodate 1 x 400kV feeder bay for Silimela Line 1
- Extend Silimela Substation to accommodate 1 x 400kV feeder bay for Borutho Line 1
- Build approximately 150km 400kV line from Borutho Substation to Silimela Substation, with associated extensions at the terminal substations.
- The powerline corridor to be studied is 1km.

PROJECT LOCATION

Borutho substation falls under the Waterberg District Municipality, in the Limpopo Province, South Africa. It is ensconced between the towns of: Steenbokpan (i.e., a village town) located west of Lephalale (former Elisras – Medupi located approximately 17.9km west of the town), Marken (i.e., a village town), Mokopane in the south-east (i.e., approximately 31km from Borutho substation) and the town of Polokwane in the east (i.e., the capital town of Limpopo - Borutho is approximately 48km).

The proposed development falls within three Local Municipalities, namely, Ephraim Mogale, Modimolle-Mookgophong and Mogalakwena, Limpopo Province. The Local Municipalities fall within the jurisdiction of the Sekhukhune and Waterberg District Municipalities.

The geographic coordinates are as follows:

- Start: 23° 54'24.97 S; 28° 58'41.96 E;
- Middle 24° 31'21.81 S; 28° 57'45.01 E .
- End: 25° 05'13.31 S; 29° 17'57.47 E.

The powerline will transverse the following properties:

<ul style="list-style-type: none"> ▪ Portion 0 of Farm Ga Puka ▪ Portion 0 of Farm Gillimberg 861 LR ▪ Portion 7 of Farm Gillimberg 861 LR ▪ Portion 9 of Farm Gillimberg 861 LR ▪ Portion 17 of Farm Gillimberg 861 LR ▪ Portion 8 of Farm Gillimberg 861 LR ▪ Portion 6 of Farm Gillimberg 861 LR ▪ Portion 30 of Farm Gillimberg 861 LR ▪ Portion 10 of Farm Gillimberg 861 LR ▪ Portion 29 of Farm Gillimberg 861 LR ▪ Portion 47 of Farm Gillimberg 861 LR ▪ Portion 1521 of Farm Piet Potgietersrust KS ▪ Portion 1489 of Farm Piet Potgietersrust KS ▪ Portion 1567 of Farm Piet Potgietersrust KS ▪ Portion 1435 of Farm Piet Potgietersrust KS ▪ Portion 1566 of Farm Piet Potgietersrust KS ▪ Portion 1486 of Farm Piet Potgietersrust KS ▪ Portion 1443 of Farm Piet Potgietersrust KS ▪ Portion 1446 of Farm Piet Potgietersrust KS ▪ Portion 1533 of Farm Piet Potgietersrust KS ▪ Portion 1491 of Farm Piet Potgietersrust KS 	<ul style="list-style-type: none"> ▪ Portion 73 of Farm Piet Potgietersrust KS ▪ Portion 47 of Farm Piet Potgietersrust KS ▪ Portion 49 of Farm Piet Potgietersrust KS ▪ Portion 2 of Farm Weltevrede ▪ Portion 9 of Farm De Hoop ▪ Portion 1 of Farm De Hoop ▪ Portion 6 of Farm Klavervalley ▪ Portion 2 of Farm Ceres ▪ Portion 7 of Farm Geluksfontein ▪ Portion 5 of Farm Springhaan Slaagte ▪ Portion 0 of Farm Rondeberg ▪ Portion 7 of Farm Conterberg ▪ Portion 17 of Farm Conterberg ▪ Portion 1 of Farm Weltevrede ▪ Portion 9 of Farm Conterberg ▪ Portion 11 of Farm Haarde Kraal ▪ Portion 5 of Farm Klavervalley ▪ Portion 1 of Farm Doornlaagte ▪ Portion 2 of Farm Rondeberg ▪ Portion 2 of Farm Mooigelegen ▪ Portion 3 of Farm De Hoop
--	--



- | | |
|--|---|
| <ul style="list-style-type: none">▪ Portion 1517 of Farm Piet Potgietersrust KS▪ Portion 1481 of Farm Piet Potgietersrust KS▪ Portion 1482 of Farm Piet Potgietersrust KS▪ Portion 1539 of Farm Piet Potgietersrust KS▪ Portion 1529 of Farm Piet Potgietersrust KS▪ Portion 1474 of Farm Piet Potgietersrust KS▪ Portion 1568 of Farm Piet Potgietersrust KS▪ Portion 1438 of Farm Piet Potgietersrust KS▪ Portion 1432 of Farm Piet Potgietersrust KS▪ Portion 1427 of Farm Piet Potgietersrust KS▪ Portion 1426 of Farm Piet Potgietersrust KS▪ Portion 1520 of Farm Piet Potgietersrust KS▪ Portion 1537 of Farm Piet Potgietersrust KS▪ Portion 1483 of Farm Piet Potgietersrust KS▪ Portion 1440 of Farm Piet Potgietersrust KS▪ Portion 1439 of Farm Piet Potgietersrust KS▪ Portion 48 of Farm Piet Potgietersrust KS▪ Portion 52 of Farm Piet Potgietersrust KS▪ Portion 17 of Farm Piet Potgietersrust KS▪ Portion 98 of Farm Piet Potgietersrust KS▪ Portion 100 of Farm Piet Potgietersrust KS▪ Portion 144 of Farm Piet Potgietersrust KS▪ Portion 41 of Farm Piet Potgietersrust KS▪ Portion 40 of Farm Piet Potgietersrust KS▪ Portion 58 of Farm Uitloop 3▪ Portion 46 of Farm Gillimberg 861 LR▪ Portion 59 of Farm Uitloop 3▪ Portion 55 of Farm Uitloop 3▪ Portion 62 of Farm Piet Potgietersrust KS▪ Portion 35 of Farm Piet Potgietersrust KS▪ Portion 175 of Farm Uitloop 3▪ Portion 57 of Farm Piet Potgietersrust KS▪ Portion 140 of Farm Piet Potgietersrust KS▪ Portion 80 of Farm Piet Potgietersrust KS▪ Portion 75 of Farm Piet Potgietersrust KS | <ul style="list-style-type: none">▪ Portion 3 of Farm Doornstock▪ Portion 1 of Farm Rondeberg▪ Portion 23 of Farm Conterberg▪ Portion 3 of Farm De Bults Punt▪ Portion 4 of Farm De Bults Punt▪ Portion 3 of Farm Springhaa Nslaagte▪ Portion 8 of Farm De Hoop▪ Portion 0 of Farm Springhaa Nslaagte▪ Portion 2 of Farm Oranjefon Tein▪ Portion 3 of Farm Oranjefon Tein▪ Portion 5 of Farm Conterberg▪ Portion 12 of Farm Springhaa Nslaagte▪ Portion 7 of Farm Klavervalley▪ Portion 1 of Farm Doornstock▪ Portion 10 of Farm Conterberg▪ Portion 3 of Farm Ceres▪ Portion 4 of Farm Hartebeest Fontein▪ Portion 1 of Farm Haakdoorn Kuil▪ Portion 0 of Farm Rondon▪ Portion 3 of Farm Klipgat▪ Portion 0 of Farm Knoppiesdo Ornbom▪ Portion 0 of Farm Zoetfontein▪ Portion 0 of Farm Haardekraal▪ Portion 4 of Farm Klavervalley▪ Portion 0 of Farm Doornlaagte▪ Portion 8 of Farm Geluksfontein▪ Portion 16 of Farm Conterberg▪ Portion 1 of Farm Mooigelegen▪ Portion 1 of Farm Rondon▪ Portion 0 of Farm Gegund |
|--|---|

BASIC ASSESSMENT PROCESS

The proposed project is located within the Electricity Grid Infrastructure¹ (EGI) Corridor referred to as the International Corridor, therefore, triggers the BA Process in terms of the Environmental Impact Assessment Regulations, 2014 (as amended) promulgated in terms of Chapter 5 of the National Environmental Management Act, 1998 (Act No 107 of 1998). It should be noted that the Department of Forestry, Fisheries and the Environment (DFFE) is the competent authority who will be responsible for reviewing the BAR and making a decision on the application for authorisation.

NTC Group has been appointed as independent EAPs to undertake a BA Process. The BA process is required to identify and assess potential environmental impacts associated with the project, as well as propose appropriate mitigation and management measures to be contained within the Environmental Management Programme (EMPr). I&APs will be actively involved in the BA processes through the public participation process.

Environmental processes are used by planning authorities/applicants to obtain an independent and objective view of the potential environmental (biophysical and social) impacts that could arise during the establishment and operation of a project. The BA report serves to provide the competent authority with sound basis information for their decision-making. The BA process proposed will entail the review of existing and new information and the assessment potential environmental impacts. All comments provided during the BA Process will be captured into the Comment and Responses Report which will be submitted to the authorities as part of the BA Report.

WHAT ARE THE POTENTIAL ENVIRONMENTAL IMPACTS ASSOCIATED WITH THE PROPOSED PROJECTS?

The study area will be assessed by independent environmental specialists to identify the potential for environmental impacts. The following specialist studies that are proposed as part of the Integrated Environmental Processes:

- Heritage Impact Assessment
- Paleontological Impact Assessment
- Visual Impact Assessment
- Aquatic Impact Assessment

¹ The Strategic Transmission Corridors are identified by the Department of Forestry, Fisheries and the Environment (DFFE) as geographical areas of strategic importance for the development the supporting large scale electricity transmission and distribution infrastructure in terms of Strategic Integrated Project 10: Electricity Transmission and distribution. This is as per GNR113 of February 2018.

- Soil and Agricultural Potential Assess
- Social Impact Assessment
- Terrestrial Ecology Assessment
- Avifaunal Assessment

PUBLIC PARTICIPATION PROCESS

Public involvement is an essential part of the environmental assessment process. Stakeholders and or I&APs with interest in the project will be identified and notified about the project. All comments received from stakeholders and or I&APs will be recorded and presented to the project team and regulatory authorities. In addition, feedback will be provided to the stakeholders on how their comments have been considered in terms of the project planning and implementation, and I&APs will be notified of the outcome of the EA process.

HOW DO I&APs PARTICIPATE?

Should you wish to register as an I&AP, or if you know of any person or group that should be included in the public participation process, please complete the attached I&AP registration form and return to NTC. Alternatively, comments, objections or questions regarding the project can be submitted to NTC by telephone or in writing (sent to us by fax, e-mail or post) or in person to the contact details below during planned focus group meetings as required. Please ensure that you provide us with your name, contact details and comments before the 27 May 2024.

The Draft Basic Assessment Report will be made available for review from the 24 April 2024 to the 27 May 2024 following venues and platforms:

- Borutho Power Station Security Gate/ Entrance;
- NTC Group website: www.ntcgroup.co.za
- Seshego Local Library;
- Mogalakwena Public Library ;
- and Groblersdal Public Libraries.
- On request from NTC

NTC Group (Pty) Ltd

Contact person: Karabo Mashabela

CDH Building | 1 Protea Place | Sandton | 2031

Tel.: (011) 462 2022; Fax: (086) 692 8639

E-mail: ppp@ntcgroup.co.za

REGISTRATION FORM FOR I&APs		
Name and Surname		
Postal Address		
		Postal Code:
Street Address		
		Postal Code:
Telephone No.		
Fax No.		
Cell No.		
Email Address		
Who else do you think should be included in the process? (Please include contact details if possible.)		
Please indicate why you have an interest or how you will be affected by this project:		
Please write your comments, concerns, objections or questions here (use additional pages where necessary)		
<p>Please return completed forms to: NTC Group CDH Building 1 Protea Place Sandton 2031 Tel: (011) 462 2022/073 722 8882 E-mail: ppp@ntcgroup.co.za</p>		

Appendix A – Locality Map



Cops probe Chinese nationals over human trafficking

Children were smuggled from Mozambique

By Bongani Mdakane

Gauteng authorities have shut down a factory whose owners were implicated in the trafficking of children from Mozambique and forcing them into child labour.

Police say they are conducting further investigations into the case against Boyu International Electrical Supply, which is owned by a Chinese foreign national.

The Gauteng Department of Social Development said eight youths aged 14 to 17, were trafficked from Xai-Xai in Mozambique and forced to work at the Chinese factory in Nigel.

The teenage boys told the authorities they were taken from Nbacunte village in Mozambique in January by a taxi driver who lives in the area. “The eight were found by the police during a raid initiated by

the Department of Labour and Employment after it got information that a Chinese factory in Nigel was employing children and undocumented foreign nationals in January this year. The children were placed at the Mary Moodley Child and Youth Care Centre in Benoni,” said departmental spokesperson Themba Gadebe.

Gauteng SAPS spokesperson Mavela Masondo said the factory, which has been operational for three years, has since been shut down.

Masondo said a suspect was arrested but his case was never enrolled on the court roll due to insufficient evidence.

“We are still investigating the matter. The suspect is in the country legally. The Department of Labour and Employment shut down his factory,” Masondo said.

The children were handed over to social workers at the border post

Gadebe said the youth told social workers that they were Mozambican nationals and had come to South Africa with about 14 other boys from their village after being recruited by the Nigel company’s driver.

“The driver of the taxi was reported to have come from the same village and asked young men and families who were interested in working in South Africa, Johannesburg. He informed the recruits and family members that there was no need for passports or documents.

“According to the trafficked victims, inside the minibus, there were other children of their same age wearing expensive sneakers and using iPhones, convincing them to come with them,” Gadebe said.

On Tuesday, social workers managing the case asked the Children’s Court in Nigel to grant permission to release them from the place of safety where they had been kept and allow them to be repatriated to Mozambique.

The Mozambican consulate issued them temporary travel documents and allowed a care-



Mozambican children aged between 14 and 17 were returned home after they were trafficked by a Nigel-based Chinese business

to-care process between the social development departments in the two countries.

The children were handed over to social workers at the Komatipoort border post.

Several studies have ranked South Africa among countries with a high rate of cross-border human trafficking cases. Interpol has warned that migrant smugglers take advantage of people who want to leave their home countries to escape poverty, conflict, or simply want to seek a better life.

Interpol further advises that “even if irregular migrants generally enter into the jour-

ney voluntarily, they are often exposed to significant risks, including that of being trafficked, kidnapped or die in transit to their destinations.”

In November 2019 seven Chinese nationals, four men and three women were arrested. The arrests followed a tip-off that the Chinese nationals were allegedly involved in the trafficking of illegal immigrants. During the blitz 91 Malawian nationals were found in the factory, 37 of them were children. During court proceedings, it was revealed the Malawians working in the factory were transported in cargo containers.

‘DA has shot itself in the foot by burning the flag’

Ikalafeng says act is criminal, treasonous

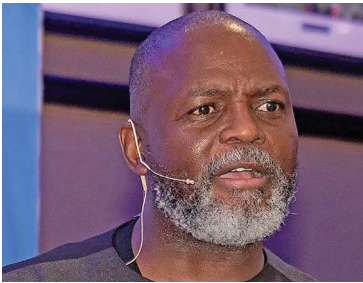
By Jo-Mangaliso Mdhlela
jo@sundayworld.co.za

Renowned brand strategist Thebe Ikalafeng warns that the DA has positioned itself against the country’s populace and must now reap the fruits of its undoing by its depiction of a burning national flag.

“The flag, across political affiliation, is a symbol of unity, and the DA has shown themselves to be unpatriotic,” Ikalafeng, who is described as the pre-eminent global African authority in branding, told *Sunday World* in an interview this week.

This was in response to last week’s DA advert depicting the country’s flag burning, after which a contraption was contrived to reassemble the burnt national flag to its original state, symbolising, according to the DA, that if they were to win an election, they would govern the country better.

“What the DA has done is not only treasonous but is also criminal. Our flag is one of the most treasured and adored symbols in the world and is associated with the struggle of the people for freedom and democracy.



Thebe Ikalafeng

“Society imposes norms on society, and creative licence, as suggested by the DA, has its limits, and the DA has gone far beyond what is acceptable. The people of this country, across the colour divide, are justified in expressing their anger in protest against such a stunt.

“A country’s flag is the embodiment of the people, and not a political party symbol, and the DA has touched a raw nerve of the people by burning the country’s flag, hence such a negative reaction against them,” he said.

The notion of “creative license”, touted by the DA, which they think they are entitled to, is misplaced. “If the truth must be told, the effect of the DA’s action to burn the national flag for political ends has boomeranged on them, and the people of this country are rising in anger against them for showing un-

patriotic tendencies by burning the country’s most valued symbolism of unity,” he said.


Ikalafeng was also joined by the ANC and Cosatu in lambasting the “unpatriotic stance adopted by the DA”.

ANC national spokesperson Mahlengi Bhengu said the country ought to be disgusted by the DA political advertisement, which had disrespected the sovereignty of this country.


“The consistent insensitivity in their campaign communications reflects a glaring absence of moral integrity within the party. These actions are not only disrespectful but also highly offensive. The fact that such content received approval from their communications department is a clear indication of the lack of critical thinking within the party,” Bhengu said.

Acting national spokesperson and parliamentary coordinator of Cosatu Matthew Parks said the federation was appalled “by the latest DA election stunt mimicking the burning of the national flag”.

“This is a reminder once again of the DA’s tone-deaf insensitivity towards millions of South Africans who experienced the most horrific form of abuse during the dark apartheid days,” said Parks.



NTC Group



BASIC ASSESSMENT PROCESS FOR THE PROPOSED HIGHVELD NORTH-WEST AND LOWVELD STRENGTHENING PRO-JECT: EXTENTION OF BORUTHO AND SILIMELA SUBSTATIONS AND DEVELOPMENT OF BORUTHO-SILIMELA 400 KV TRANSMISSION LINE AND ASSOCIATED INFRASTRUCTURE, WITHIN THE LIMPOPO PROVINCE

DDFE REF: 14/12/16/3/3/1/2979

Notice is hereby given in terms of the National Environmental Management Act, No. 107 of 1998 (NEMA), Environmental Impact Assessment (EIA) Regulations 2014 (as amended) (GN R.982), and Water Use Licence Application in Terms of Section 21(i) and (c) of the National Water Act, (1998) for the intention of Eskom Holdings Limited SOC Limited (Eskom) to construct a 400kV power line, extend Borutho and Silimela substations and associated infrastructure, which trigger Listing Notice 1 (GN R.983), Listing Notice 2 (GN 984) and Listing Notice 3 (GN R.985), as amended, and will therefore require an Basic Assessment (BA) and a Water Use License Application (WULA) processes to be un-dertaken.

PROJECT DESCRIPTION Eskom is proposing the construction of the Borutho-Silimela 400kV power line and its associated infrastructure. The length of the power line is approximately 150km. The proposed power line is located between the Borutho Substation on farm Gillimberg 861 in Mokopane and runs south to the proposed Silimela substation on farm Loskop Noord 12, near Marble Hall within the Lepelle-Nkumpi, Mogalakwena, Modimolle-Mookgophong and Ephraim Mogale Local Municipalities, Limpopo Province. The construction of the power line will aid Eskom in strengthening the power supply within Limpopo Province.

The scope of work entails:

- Extend Borutho Substation to accommodate 1 x 400kV feeder bay for Silimela Line 1.
- Extend Silimela Substation to accommodate 1 x 400kV feeder bay for Borutho Line 1.
- Build approximately 150km 400kV line from Borutho Substation to Silimela Substation, with associated extensions at the terminal substations.

PROJECT LOCATION The proposed 400kV powerline will transverse three Local Municipalities, namely, Ephraim Mogale, Modimolle-Mookgophong and Mogala-kwena within the Limpopo Province.

The geographic coordinates are as follows:

- Start: 23° 54'11.44" S; 28° 58'38.38" E;
- Middle 24° 31'21.87" S; 28° 57'43.26" E; and
- End: 25° 05'09.01" S; 29° 17'52.40" E.

PUBLIC COMMENT To register as an interested and/or affected party (I&AP) and/or obtain additional information. Please submit your name, contact details (telephone number, cell phone number, postal address, email address and/or fax number) and the interest which you have in the application to NTC Group as per the details below:

The draft Basic Assessment Report (BAR) was be made available to the public from the 25 April 2024 to the 03 June 2024 at the following Venues:

- NTC Group website: www.ntcgroup.co.za
- Mokopane Local Library;
- Mogalakwena Local Municipality;
- Ephraim Mogale Local Municipality; and
- On request from NTC.

Focus Group Meetings will be held on the 16 May 2024 at the Mookgopong Community Hall from 10:00am to 12:00pm and at the Armode Community Centre from 15h00pm to 17h00pm. Another focus group meeting will be held on the 17 May 2024 in Marblehall Community Centre from 14:00pm to 17:00pm.

A virtual meeting will be held on 22 May 2024. To receive the login details of the meeting, please contact NTC at any of the contact details below.

In terms of the Protection of the Personal Information Act, 2013 (Act 4 of 2013) as amended, you hereby declare and confirm that you as an interested and affected party providing information, consent for your information to be gathered, stored and distributed for the purpose of this application. **Please note that contact details provided will not be distributed for public review, i.e. contact details will be concealed, however, all contact details will only be included in the Draft BAR and Final BAR which will be submitted only to the competent authority, which in this case is the DFFE.**

Public Participation office
NTC GROUP (PTY) LTD
CDH Building | 1 Protea Place | Sandton | 2031
Tel.: (011) 462 2022; **Fax:** (086) 6651 864
E-mail: ppp@ntcgroup.co.za
Contact person: Tebogo Mapinga/ Jessica Morwasehla/ Shandre van der Merwe

Suspended SETA chief’s case drags on



BMA is hiring.
For more information,
please visit BMA website
(www.bma.gov.za)
Closing Date: 10 May 2024

SW_00889

Auditors found Adams illegally appointed training entities

By **Mpho Sibanyoni**

The case of the chief executive officer of a government sector education and training authority (Seta) who was suspended after damning allegations against him is still dragging on after two years, with no end in sight.

Wayne Adams, the Manufacturing, Engineering and Related Services Sector Education and Training Authority (merSETA) CEO, was suspended in 2022 following a raft of damning

findings made against him in an forensic audit.

The merSETA confirmed Adams’ suspension to *Sunday World* this week and added that he was also facing a disciplinary hearing.

The probe, conducted by Khumalo and Mabuya Chartered Accountants (KnMFM), covered the period 2016 to 2022, which is when the alleged irregularities are said to have occurred.

The merSETA board chairperson Kate Moloto in response to a *Sunday World* enquiry said Adams was placed on precautionary suspension on November 16, 2022 following the forensic audit report findings.

“The disciplinary inquiry against the CEO commenced on the



Wayne Adams was suspended as merSETA CEO. / Supplied

26th of October 2023. The disciplinary inquiry is still underway,” said Moloto.

The merSETA, a state entity falling under the Department of Higher Education and Training, issues discretionary grant funds to companies providing training in the manufacturing and engineering sectors.

In the report, KnMFM alleged that Adams acted in contradiction to merSETA’s code of conduct policy by failing to promote sound, efficient and accountable administration by allowing training entities to be appointed without meeting the requisite verification requirements.

Adams also allegedly did not comply with the merSETA’s policy, which required him to report through the appropriate channels any fraud, corruption, nepotism and maladministration, among others.

He is also accused of failing to adhere to the merSETA code of ethics, which required him to probe and report all detected or reported cases of fraud.

“... instead he allowed irregular payments to be made to SET, Richbam and

other entities notwithstanding his awareness of the irregularities, thus causing irregular expenditure,” read the report.

According to the report, SET had been irregularly appointed.

“KnMFM concluded that Mr Adams did not perform his duties in terms of Clause 5.4.2 of his employment contract, in that by erasing evidence of irregularities in the appointment of SET, Richbam and other entities, he failed to meet expectations of transparency, fairness and honesty in his dealings with all internal and external parties,” the report reads in part.

Adams is furthermore accused of breaching merSETA’s code of ethics, conflict of interest and employment contract by allowing himself to be captured by members of the board and interest groups.

The report alleged that the relationship of Adams with some of the board members exhibited unethical conduct. This was because the board members worked for companies that benefited from merSETA’s discretionary grant fund and funds were continuously channelled without following merSETA policies.

It also said it was a challenge that there were board members who solicited personal benefits through the merSETA discretionary grant funding and/or supply chain processes in terms of the Prevention and Combating of Corrupt Activities Act.


The report further revealed that to erase evidence against him, Adams allegedly instructed merSETA’s ICT coordinator to go through the laptops of employees without their knowledge and delete information implicating him in any wrongdoing.

The investigation further found that Adams deleted items from his work laptop between 9.22am and 10.04am, moments before his suspension on November 16, 2023.

The report revealed it was concerning that Adams bought company shares for cash valued more than R6-million while in the employ of merSETA in light of the prevalent irregular discretionary grant funding awards. Moloto said the case was dragging as the final report was only approved in May last year.

Adams couldn’t be reached for comment at the time of going to print.

“Wayne Adams is also accused of failing to adhere to the merSETA code of ethics



BASIC ASSESSMENT PROCESS FOR THE PROPOSED HIGHVELD NORTH-WEST AND LOWVELD STRENGTHENING PROJECT: EXTENSION OF BORUTHO AND SILIMELA SUBSTATIONS AND DEVELOPMENT OF BORUTHO-SILIMELA 400 KV TRANSMISSION LINE AND ASSOCIATED INFRASTRUCTURE, WITHIN THE LIMPOPO PROVINCE

Notice is hereby given in terms of the National Environmental Management Act, No. 107 of 1998 (NEMA), Environmental Impact Assessment (EIA) Regulations 2014 (as amended) (GN R.982), and Water Use Licence Application in Terms of Section 21(i) and (c) of the National Water Act, (1998) for the intention of Eskom Holdings Limited SOC Limited (Eskom) to construction of a 400kV power line, which triggers Listing Notice 1 (GN R.983), Listing Notice 2 (GN 984) and Listing Notice 3 (GN R.985), as amended, and will therefore require an Basic Assessment (BA) and a Water Use License Application (WULA) processes to be undertaken.

PROJECT DESCRIPTION Eskom is proposing the construction of the Borutho-Silimela 400kV power line and its associated infrastructure. The length of the power line is approximately 150km. The proposed power line is located between the Borutho Substation on farm Gillimberg 861 in Mokopane and runs south to the proposed Silimela substation on farm Loskop Noord 12, near Marble Hall within the Lepelle-Nkumpi, Mogalakwena, Modimolle-Mookgophong and Ephraim Mogale Local Municipalities, Limpopo Province. The construction of the power line will aid Eskom in strengthening the power supply within Limpopo Province.

The scope of work entails:

- Extend Borutho Substation to accommodate 1 x 400kV feeder bay for Silimela Line
- Extend Silimela Substation to accommodate 1 x 400kV feeder bay for Borutho Line
- Build approximately 150km 400kV line from Borutho Substation to Silimela Substation, with associated extensions at the terminal substations

PROJECT LOCATION The proposed 400kV powerline will transverse three Local Municipalities, namely, Ephraim Mogale, Modimolle-Mookgophong and Mogalakwena within the Limpopo Province.

The geographic coordinates are as follows:

- Start: 23° 54'11.44" S; 28° 58'38.38" E;
- Middle 24° 31'21.87" S; 28° 57'43.26" E; and
- End: 25° 05'09.01" S; 29° 17'52.40" E.

PUBLIC COMMENT To register as an interested and/or affected party (I&AP) and/or obtain additional information. Please submit your name, contact details (telephone number, postal address and/or email address) and the interest which you have in the application to NTC Group as per the details below:

The draft BAR will be made available for public from the 25 April 2024 to the 27 May 2024 at the following Venues:

- NTC Group website: www.ntcgroup.co.za
- Borutho Power Station Security Gate/ Entrance;
- Seshego Local Library;
- Mogalakwena Public Library;
- Groblersdal Public Libraries; and
- On request from NTC.

In terms of the Protection of the Personal Information Act, 2013 (Act 4 of 2013) as amended, you hereby declare and confirm that you as an interested and affected party providing information, consent for your information to be gathered, stored and distributed for the purpose of this application. Please note that contact details provided will not be distributed for public review, i.e. contact details will be concealed, however, all contact details will only be included in the Draft BAR and Final BAR which will be submitted only to the competent authority, which in this case is the DFFE.

Public Participation office
NTC GROUP (PTY) LTD
CDH Building | 1 Protea Place | Sandton | 2031
Tel.: (011) 462 2022; **Fax:** (086) 6651 864
E-mail: ppp@ntcgroup.co.za
Contact person: Tebogo Mapinga/ Jessica Morwasehla/ Shandre van der Merwe


SW_00895



HOUSING COMPANY TSHWANE
affordable housing solutions

BID No.	PROJECT NAME
HCT-06/2023/24	APPOINTMENT OF A REPUTABLE AND EXPERIENCED BIDDER TO PROVIDE SECRETARIAT SERVICES FOR A PERIOD OF TWELVE (12) MONTHS
Project Scope:	Housing Company Tshwane requires secretariat services to provide Board support to ensure compliance with legal requirements relating to corporate governance, administration and management of meetings, Governance framework development, advisory services and liaison for Board and Committees, record keeping, and Timelines, for 12 months .
Bid Documents availability from:	Documents will be available as of the 7th May 2024 and can be collected (with Proof of payment) at the Housing Company Tshwane (HCT) offices on the 1st floor, SKG Tower Building (ABSA Building), 310 Pretorius Street OR via email (hct-scm@tshwane.gov.za) per request with proof of payment.
Bid Costs:	R 200.00 (Two Hundred Rands only) non-refundable fee inclusive of VAT.
Banking Details	Payable to HCT, in the following Bank Account: Bank name: ABSA Account name: Housing Company Tshwane Account number: 405 748 187 9 Branch name: Pretoria Branch code: 323345 Reference #: HCT-06-2023-24
Compulsory Briefings	Not Applicable
Bid Closing:	The closing time for receipt of Tenders is 12:00 noon, on 6 June 2024 . Bids will subsequently be opened in public at the HCT offices on 1st floor, SKG Tower Building (ABSA Building), 310 Pretorius Street. No late bids will be accepted.







SW_00892



HOUSING COMPANY TSHWANE
affordable housing solutions

BID No.	PROJECT NAME
HCT-05/2023/24	APPOINTMENT OF THE PANEL OF REPAIRS AND MAINTENANCE CONTRACTORS THAT WILL BE UTILIZED AS AND WHEN REQUIRED FOR A PERIOD OF 3 YEARS (36 MONTHS).
Project Scope:	Housing Company Tshwane invites suitable and qualified contractors or suppliers to be placed on the Panel of Repairs and Maintenance service providers to assist the Entity and its Property Management department which is responsible for the: <ul style="list-style-type: none">Planned repairs and maintenance.Preventative repairs and maintenance, etc.
Bid Documents availability from:	Documents will be available as of the 7th May 2024 and can be collected (with Proof of payment) at the Housing Company Tshwane (HCT) offices on the 1st floor, SKG Tower Building (ABSA Building), 310 Pretorius Street OR via email (hct-scm@tshwane.gov.za) per request with proof of payment.
Bid Costs:	R 200.00 (Two Hundred Rands only) non-refundable fee inclusive of VAT.
Banking Details	Payable to HCT, in the following Bank Account: Bank name: ABSA Account name: Housing Company Tshwane Account number: 405 748 187 9 Branch name: Pretoria Branch code: 323345 Reference #: HCT-05-2023-24
Compulsory Briefings	Not Applicable
CIDB Grading	3GB- 6GB
Bid Closing:	The closing time for receipt of Tenders is 12:00 noon, on 6 June 2024 . Bids will subsequently be opened in public at the HCT offices on 1st floor, SKG Tower Building (ABSA Building), 310 Pretorius Street. No late bids will be accepted.

SW_00893

	
<p>S 24° 11'6", E 29° 0'34"</p> <p>Mookgopong-Modimolle Local Municipality Mokopane</p>	<p>S 24° 11'6", E 29° 0'34"</p> <p>Mookgopong-Modimolle Local Municipality Mokopane</p>
	
<p>25° 5'12.55"S 29°17'33.87"E</p> <p>Silimela Substation Main gate Marblehall</p>	<p>25° 5'12.55"S 29°17'33.87"E</p> <p>Silimela Substation Main gate Marblehall</p>
	
<p>25° 5'12.55"S 29°17'33.87"E</p> <p>Silimela Substation Main gate Marblehall</p>	<p>25° 5'12.55"S 29°17'33.87"E</p> <p>Silimela Substation Main gate Marblehall</p>