

A. M. Anders

Electricity Supply Commission.

TWELFTH
ANNUAL REPORT

of the

Electricity Supply Commission

for the

Year ended 31st December, 1934,

with a

BRIEF REVIEW OF ITS ACTIVITIES

up to

31st May, 1935.

MEMBERS OF THE
Electricity Supply Commission.

DR. HENDRIK JOHANNES VAN DER BIJL (Chairman)

ALBERT MICHAEL JACOBS.

ROBERT BURNS WATERSTON.

Electricity Supply Commission.

Electricity House,
82, Marshall Street,
Johannesburg,

31st May, 1935.

To the Honourable
The Minister of Commerce and Industries,
Pretoria.

SIR,

In terms of Section 14 of the Electricity Act No. 42 of 1922, the Commission has the honour to submit its Twelfth Annual Report covering its operations for the year ended 31st December, 1934, together with a brief review of its activities up to 31st May, 1935.

The term of office of Mr. George Goodban Elliott, who had been a member of the Commission since 1st October, 1930, expired on 30th September, 1934. The Commission wishes to place on record the valuable assistance afforded by Mr. Elliott during his service as a Commissioner.

Mr. Robert Burns Waterston was appointed a member of the Commission on 1st October, 1934.

It is with deep regret that the Commission records the death of Mr. Karl Gundelfinger on 25th February, 1935. The late Mr. Gundelfinger was appointed a member of the Commission on 1st September, 1928, and his wide experience proved invaluable to the Commission during his period of office.

The Commission has five Undertakings in operation and a sixth and seventh in course of construction.

The sales of electricity continue to expand, the figures for the year, together with the corresponding figures for 1933, being:—

		1934.	1933.
Units Sold	...	985,161,494	974,128,244

These figures do not reflect the true expansion that has taken place, for included in the 1933 figures were approximately 44,000,000 units supplied to the Capetown Corporation on interchange. The arrangement for interchange ceased towards the end of 1933, having been replaced by the agreement to pool the resources of the Power Stations at Capetown of the Commission and the Corporation. The figures for 1934 do not include the units taken by the Corporation from the pool.

A surplus is shown for the year on the operation of the Commission's undertakings as a whole, the total revenue received from the sales of electricity and other incidentals was £1,183,770 and the total cost thereon (including the provision for interest on and redemption of the loans, contributions to reserve, etc.) was £1,172,494. Revenue Accounts for each of the undertakings form annexures to this Report, and a reference to these will show that the general principle laid down in Section 10 of the Electricity Act that the undertakings shall as far as practicable be carried on neither at a profit nor a loss has been closely followed.

In addition to the loan of £6,750,000 issued during March, 1934, to which reference was made in the Eleventh Annual Report, a public loan of £2,500,000 was successfully raised during November, 1934, primarily for the purpose of financing the two undertakings in course of construction, viz., the Klip Generating Station and Rand Extension Undertakings. These issues bring the total loan capital of the Commission to £12,250,000, the whole of which was publicly subscribed within the Union.

To meet the increasing requirements, extensions of the plant and equipment at the various undertakings are proceeding.

POWER STATION PLANT.

Two of the low pressure boilers in the Salt River Power Station of the Capetown Undertaking are being replaced by two larger boilers of the same design and capacity as the four large boilers installed in 1933 for the supply of steam at a pressure of 425 lbs. per sq. inch.

Plant and equipment referred to in the last Annual Report of the Commission, consisting of two 20,000 K.W. Turbo Alternators at the Salt River Power Station, Capetown, one 20,000 K.W. Turbo Alternator for the Congella Power Station, Durban, and four 70/80,000 lb. boilers at Witbank Power Station which were either on order or in course of installation have been placed in service.

A commencement was made in July, 1934, with the construction of the Klip Generating Station Undertaking near Vereeniging and the system of supply within the area of the Rand Extension Undertaking, the licence for which was ceded to The Victoria Falls and Transvaal Power Company, Limited. Plant of a capacity of 139,000 K.Ws. is at present being installed in the Klip Generating Station and further extensions are being undertaken. It is expected to bring the station into operation in about eight to nine months.

TRANSMISSION SYSTEMS, ETC.

Extensions of the transmission and distribution systems at the various undertakings have been made during the year as requirements demanded.

ELECTRIFICATION OF RAILWAYS.

The extension of electrification from Daimana to Harrismith was put into operation in February, 1935, and further extensions commenced from Cato Ridge to Durban and Glencoe to Volksrust.

Electrification of the suburban railways along the Reef is in hand, and in this connection eight sub-stations equipped with mercury arc rectifiers will be provided by the Commission for the supply of electricity on the direct current system to the South African Railways and Harbours Administration for traction purposes.

When the programme of electrification referred to above is completed, approximately 25 per cent. of the traffic of the railways will be hauled electrically on the present basis of traffic distribution.

As heretofore, ways and means for improving the efficiency in the operation of the undertakings have been investigated during the year with the object of reducing the cost of supply to the consumers, and the Commission is pleased to be able to report that the cost per unit sold for 1934 showed a reduction as compared with the previous year.

Schemes for the supply of electricity to potential consumers in existing areas and new areas have also been investigated, and an application has been made to the Electricity Control Board for an extension of the area of supply of the Natal Central Undertaking.

The output of electricity for 1935 to date indicates that a substantial increase over 1934 can be anticipated.

A list of the annexures to the Report will be found on pp. 13-14.

The respective Agreements with The Victoria Falls and Transvaal Power Company, Limited, and the Capetown Corporation provide for co-operation with the Commission, and it is with great pleasure that the Commission records having received the fullest co-operation from these bodies, and also from the staff of the South African Railways and Harbours Administration in connection with the extension of the supply of electricity to the Administration.

The Commissioners take this opportunity of recording their thanks to the employees for their loyal support during the year, the progress of the Commission being in large measure due to their unremitting efforts.

By Order of the Commission,

I have the honour to be,

Sir,

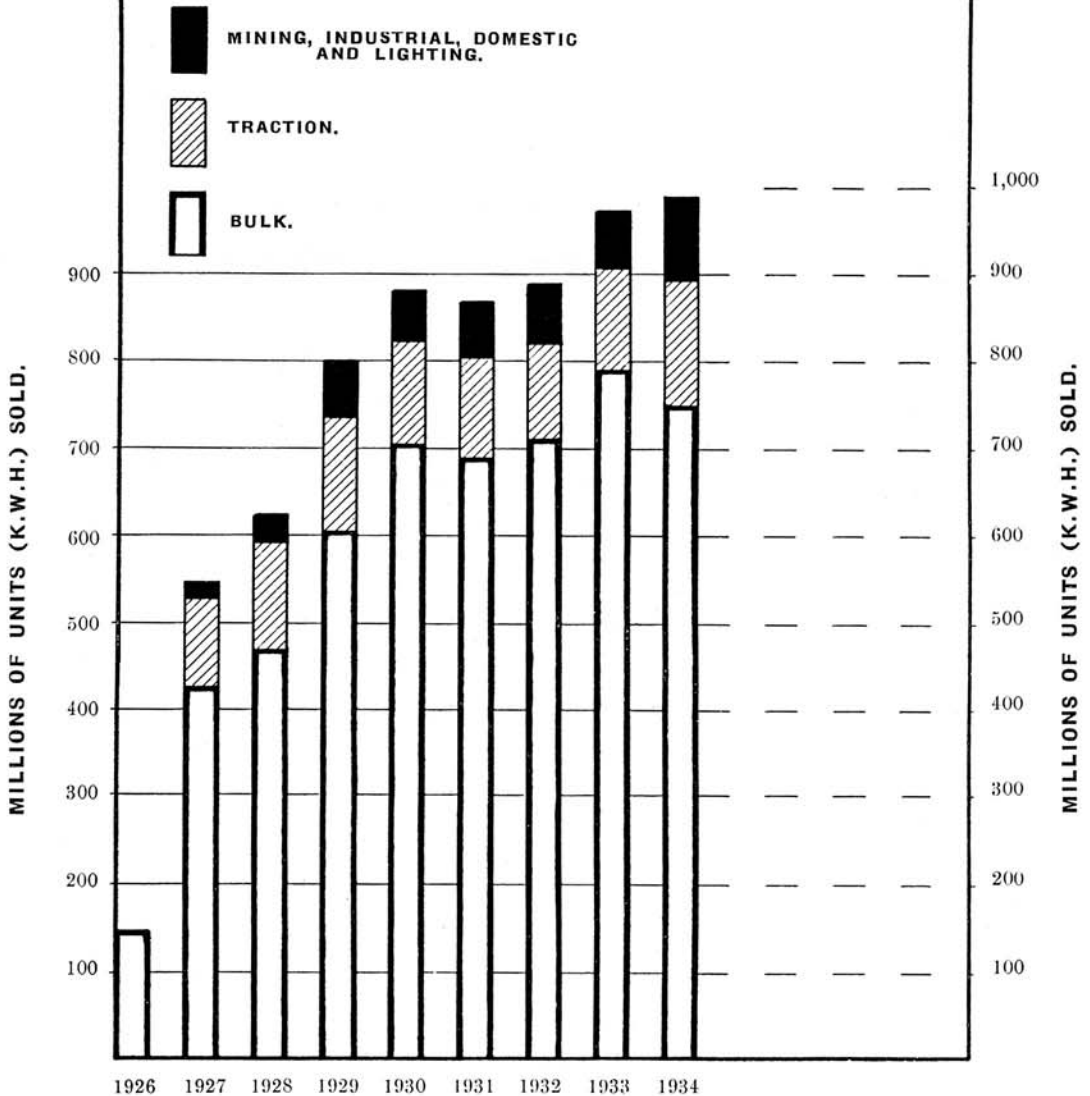
Your obedient servant,

A handwritten signature in black ink, reading "J. G. van der Byl". The signature is written in a cursive style with a horizontal line underneath the name.

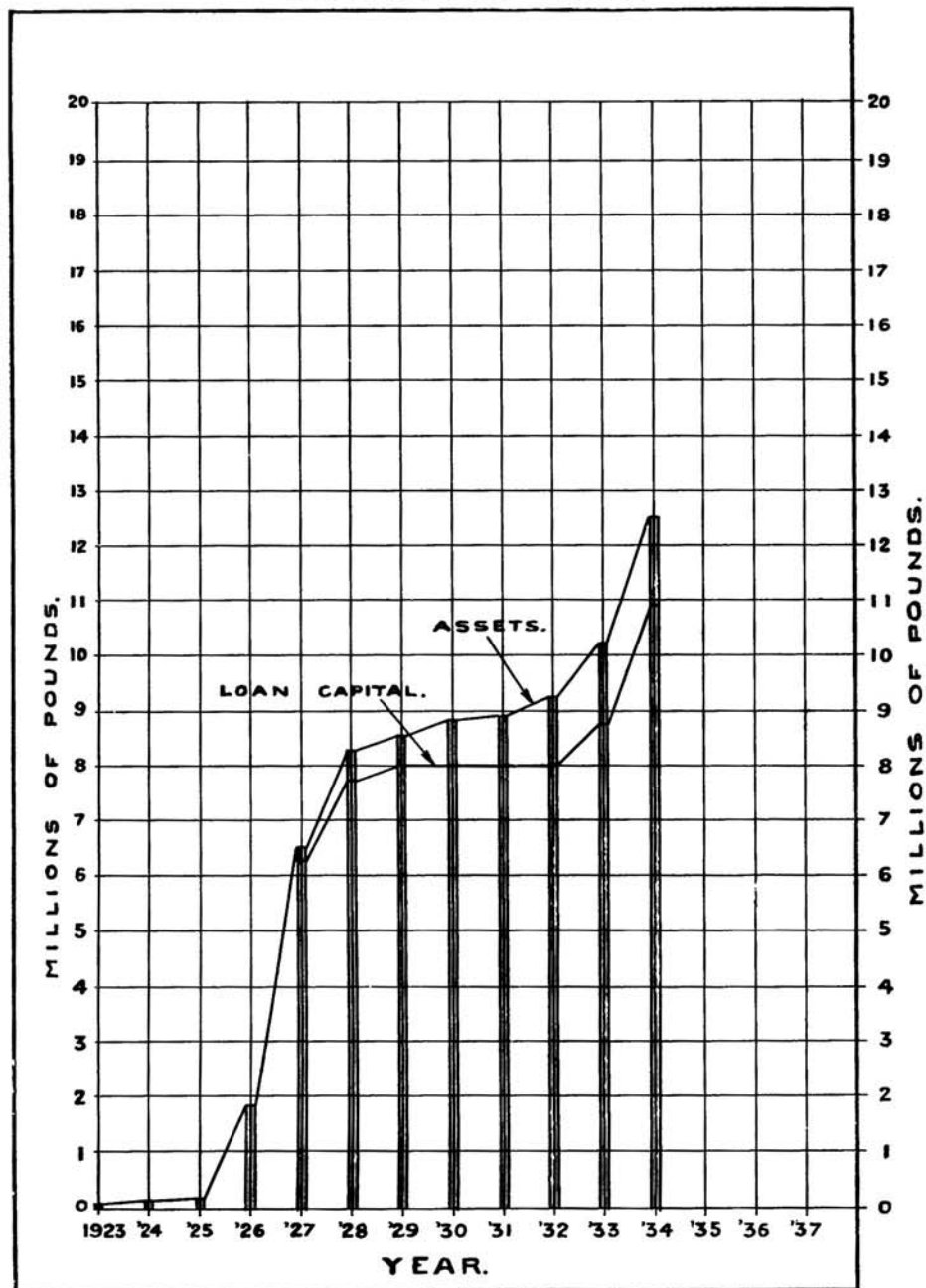
CHAIRMAN.

Electricity Supply Commission.

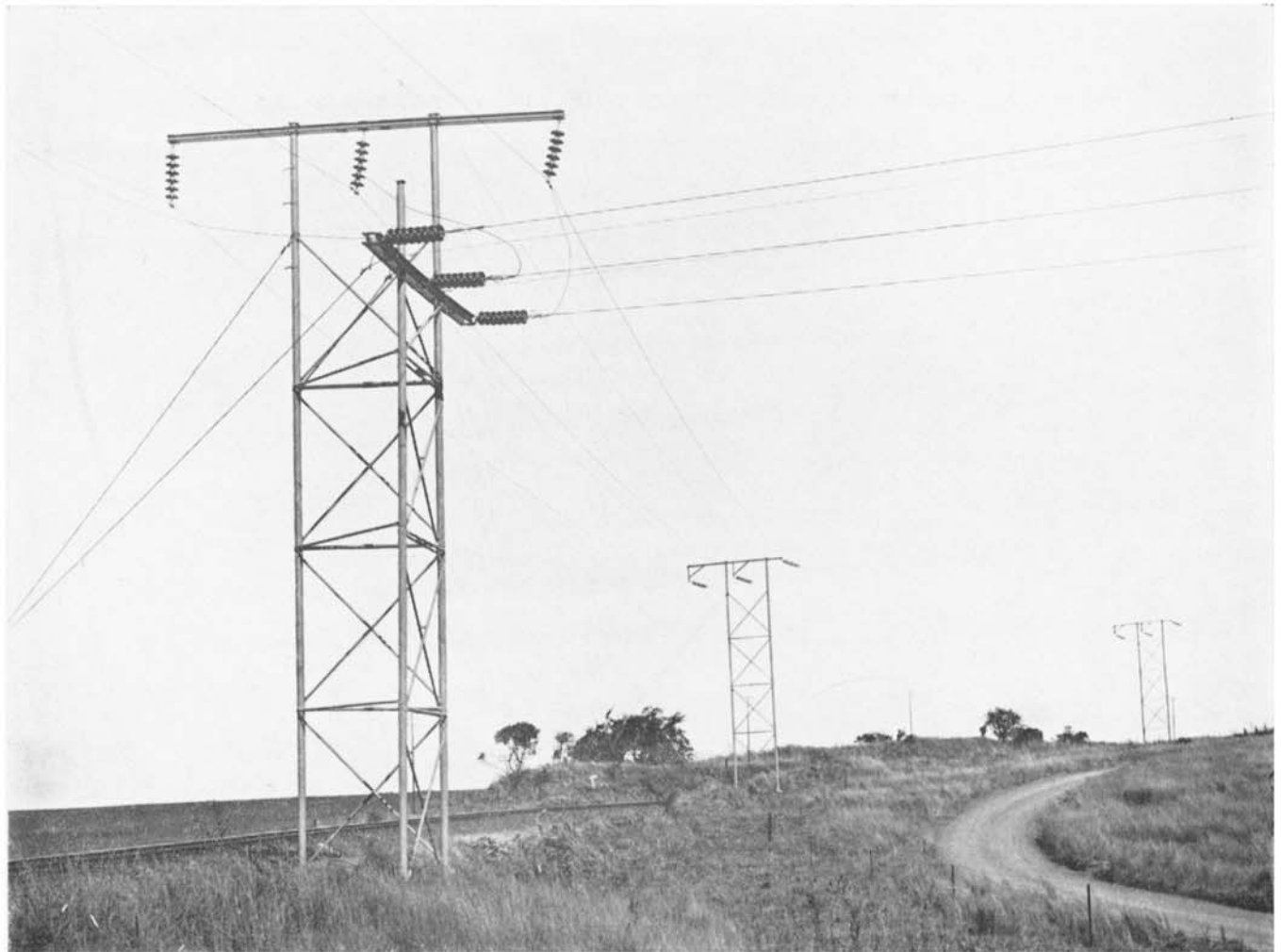
DIAGRAM SHOWING TOTAL ELECTRICITY SALES.



ASSETS AND LOAN CAPITAL.

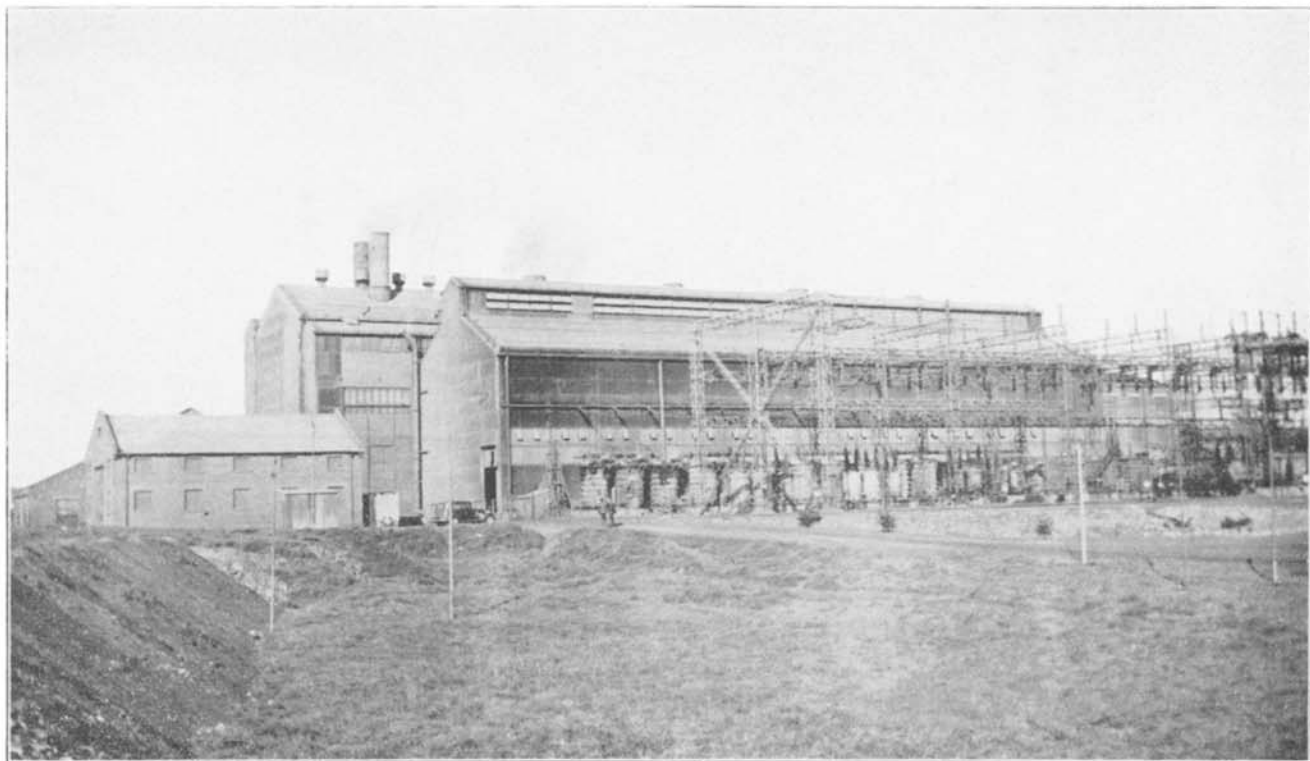


NATAL CENTRAL UNDERTAKING.



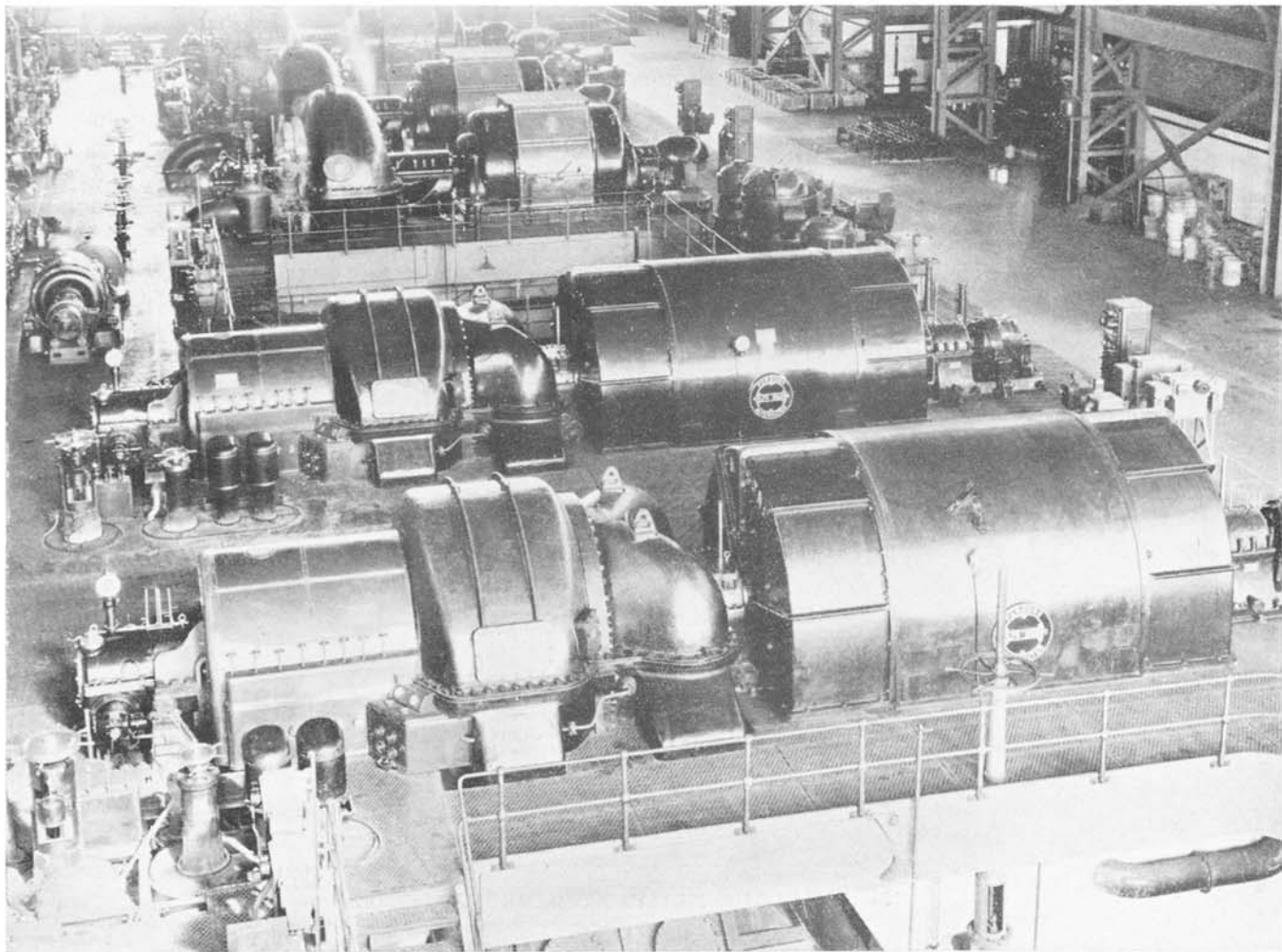
88 KV. Transmission Line between Pietermaritzburg and Cato Ridge—Structures Constructed from Discarded Locomotive Boiler Tubes.

WITBANK UNDERTAKING.



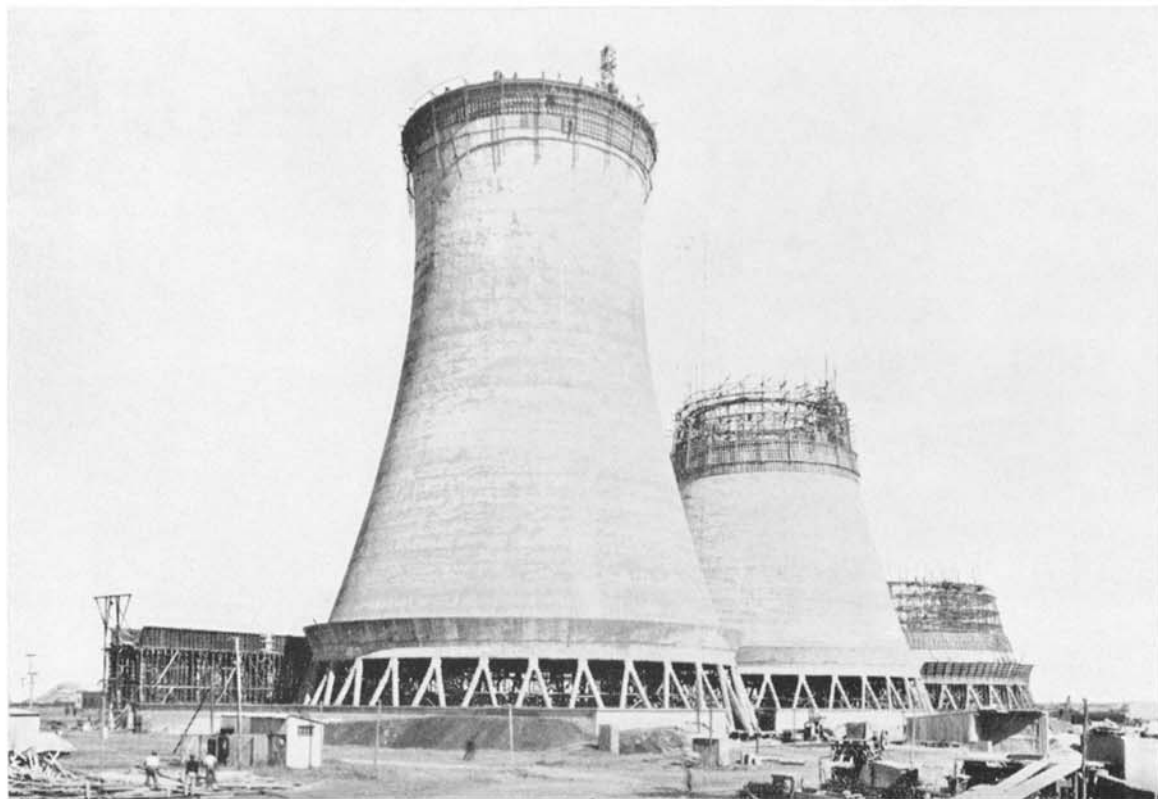
Witbank Power Station, showing Extension of Boiler House (on left) accommodating Four New Boilers.

CAPETOWN UNDERTAKING.



Turbine Room, Salt River Power Station—In Foreground Two of the Three 20,000 KW. 33 KV. Turbo Alternators Installed.

KLIP GENERATING STATION UNDERTAKING.



General View of Cooling Towers with No. 1 Tower in the Foreground.

LIST OF ANNEXURES.

ANNEXURE " A "—ACCOUNTS.

	Page.
The Report of the Auditors	15-17
Balance Sheet	18-19
Schedule of Expenditure on Capital Account	21
Statement Showing the Investments of the Redemption Fund ...	23
Account No. 1—Redemption Fund Account, £750,000 Loan ...	24-25
Account No. 2—Redemption Fund Account, £500,000 Loan ...	26-27
Account No. 3—Redemption Fund Account, £2,500,000 Loan ...	28-29
Account No. 4—Redemption Fund Account, £6,750,000 Loan ...	30-31
Account No. 5—Reserve Fund Account	32-33
Revenue and Expenditure Accounts in respect of—	
Account No. 6—Natal Central Undertaking	34-35
Account No. 7—Witbank Undertaking	36-37
Account No. 8—Capetown Undertaking	38-39
Pooled Costs, Salt River and Dock Road Power Stations ...	40-41
Account No. 9—Durban Undertaking	42-43
Account No. 10—Sabie Undertaking	44-45

ANNEXURE " B. "

	Page.
Statement.	
1. Summary of principal plant and equipment installed as at 31st December, 1934	46-47
2. Summary of principal plant and equipment in course of installation or on order as at 31st December, 1934 ...	48
3. Statement showing the price or rent of land or other property acquired or hired by the Commission	49

ANNEXURE " C. "

	Page.
Electricity Supply Schemes of Urban Local Authorities reported upon by the Commission in terms of Section 38 of the Electricity Act, 1922 	51

ANNEXURE " D. "

Statement.	Page.
1. Units sold to all consumers during the past nine years ...	52
2. The distribution of the units sold during 1934 to various classes of consumers 	52
3. Operating Statistics relating to the Commission's Under- takings 	52-53

THE REPORT OF THE AUDITORS.

Johannesburg,

17th April, 1935.

The Chairman and Members,
Electricity Supply Commission,
Johannesburg.

GENTLEMEN,

We have completed the audit of the Books and Accounts for the year ended December 31st 1934 and have to report as follows:—

LOANS.

During 1934 the following loans were issued:—

Loan No. 5.—£6,750,000 @ 3½% issued at £98 per cent repayable at par on 30th April 1964 with the option to the Commission of repaying at par on or after 30th April 1954.

This loan was raised with the intention of applying the proceeds:—

- (1) In repaying Loan No. 2 of £5,000,000 from the Union Government.
- (2) In repaying the balance of £750,000 outstanding on Loan No. 1 from the Union Government.
- (3) In extending the Commission's Undertakings.

Loan No. 6.—£2,500,000 @ 3½% issued at £98 10s. per cent repayable at par on May 31st 1964 with the option to the Commission of repaying on or after May 31st 1959.

This money was raised for the purposes of establishing the Klip and the Rand Extension Undertakings and generally for the purposes of the Commission.

The loan was only partly paid up at the date of the Balance Sheet and only small expenditure has been incurred on the two new Undertakings concerned.

REDEMPTION FUND,

In accordance with the Schedule to the Electricity Act the Commission has now established Redemption Funds for all the loans outstanding at 31st December 1934 with the exception of Loan No. 6 which was not fully paid up at that date.

Loan No. 1.—The balance of £750,000 of this loan was paid off during the year out of the proceeds of Loan No. 5 and the balance of the redemption fund of Loan No. 1 to date of repayment has been transferred to the redemption fund of Loan No. 5.

Loan No. 2.—In terms of Section 3 (6) of the Financial Adjustments Act 1930 the Commission were precluded from making provision for redemption of this loan of £5,000,000. The loan was paid off from new money raised through Loan No. 5.

Loan No. 5.—This loan of £6,750,000 was mainly raised to pay off the balance of Loan No. 1 — £750,000 and the whole of Loan No. 2 of £5,000,000. The balance of the redemption fund of Loan No. 1 i.e. that relating to £750,000 has been transferred to the redemption fund of Loan No. 5 and against this has been charged the cost of raising applicable to £750,000 of the No. 5 Loan. In the case of Loan No. 2 there was no redemption fund and consequently no amount against which to charge the cost of raising the sum of £5,000,000. This latter cost amounted to £119,255 and has been added to the Capital Expenditure of the Undertakings on which the £5,000,000 was originally spent. The cost of raising the balance of the loan is being charged to the Undertakings concerned as the money is spent. We concur in the method adopted in dealing with the cost of raising of this loan.

We are satisfied that the redemption funds of Loans 3, 4, & 5 have been maintained at the amounts required by the Schedule to the Electricity Act after taking into account the transfers of the Redemption Fund of Loan No. 1 to the Redemption Funds of Loans Nos. 4 and 5.

MOVABLE PLANT AND EQUIPMENT AT UNDERTAKINGS.

During the year it was decided to transfer the cost of these assets from capital expenditure to the Working Capital of the various Undertakings. At December 31st 1934 a valuation was made and the depreciation disclosed has been written off against the Revenue Accounts of the Undertakings concerned. It is proposed to continue to make a similar revaluation each year. This procedure has our approval.

DEPRECIATION AND OBSOLESCENCE OF PLANT.

We have had occasion in the past to comment on the inadequacy of the provisions made to cover depreciation and obsolescence by way of provisions out of revenue for redemption of loan capital and allocations to Reserve Fund. This was due to the fact that the Commission was prevented in terms of the Financial Adjustments Act 1930 from making provision for the redemption of Loan No. 2 of £5,000,000. This loan having now been paid off the funds raised for this purpose are subject to redemption as from the beginning of July 1934. The joint appropriations out of revenue to the two funds being made from July last constitute an improvement on the position previously existing.

HEAD OFFICE ADMINISTRATION AND ENGINEERING EXPENSES.

As contemplated in Section 11 (2) of the Electricity Act the Commission has, as previously, made an allocation of overhead and administration charges as between the various Undertakings.

OVERINVESTMENT OF FUNDS.

It will be noted that the Redemption, Reserve and Pension Funds were overinvested at December 31st 1934.

We are informed that having the opportunity of subscribing for portion of Loan No. 5 and loan moneys not immediately required being available, the Commission decided to take advantage of securing this investment for the Funds in advance of requirements, the advance investments being in anticipation of future contributions to the Funds. The interest earned on the amounts overinvested is being credited to the loan funds from which the overinvested moneys were drawn.

This action on the part of the Commission appears to have been advantageous.

GENERAL.

As the result of our audit of the Books and Accounts of the Commission for the year 1934, and, subject to the foregoing remarks, in terms of Clause 13 (4) of the Electricity Act 1922, we certify as follows:—

- (a) We have found the accounts of the Commission to be in order.
- (b) The accounts issued present a true and correct view of the financial position of the Commission and of its transactions and of the results of trading.
- (c) Due provision has been made for the redemption and repayment of moneys borrowed.
- (d) The value of the assets of the Commission is correctly stated.
- (e) Sums fixed by the Commission have been set aside to the Reserve Fund under Section 9 as prescribed.
- (f) All our requirements and recommendations as Auditors have been complied with and carried out.

Yours faithfully,

B. HALSEY,

ALEX. AIKEN & CARTER.

THE REPORT OF THE AUDITORS.

Johannesburg,

17th April, 1935.

The Chairman and Members,
Electricity Supply Commission,
Johannesburg.

GENTLEMEN,

We have completed the audit of the Books and Accounts for the year ended December 31st 1934 and have to report as follows:—

LOANS.

During 1934 the following loans were issued:—

Loan No. 5.—£6,750,000 @ 3½% issued at £98 per cent repayable at par on 30th April 1964 with the option to the Commission of repaying at par on or after 30th April 1954.

This loan was raised with the intention of applying the proceeds:—

- (1) In repaying Loan No. 2 of £5,000,000 from the Union Government.
- (2) In repaying the balance of £750,000 outstanding on Loan No. 1 from the Union Government.
- (3) In extending the Commission's Undertakings.

Loan No. 6.—£2,500,000 @ 3½% issued at £98 10s. per cent repayable at par on May 31st 1964 with the option to the Commission of repaying on or after May 31st 1959.

This money was raised for the purposes of establishing the Klip and the Rand Extension Undertakings and generally for the purposes of the Commission.

The loan was only partly paid up at the date of the Balance Sheet and only small expenditure has been incurred on the two new Undertakings concerned.

REDEMPTION FUND,

In accordance with the Schedule to the Electricity Act the Commission has now established Redemption Funds for all the loans outstanding at 31st December 1934 with the exception of Loan No. 6 which was not fully paid up at that date.

Loan No. 1.—The balance of £750,000 of this loan was paid off during the year out of the proceeds of Loan No. 5 and the balance of the redemption fund of Loan No. 1 to date of repayment has been transferred to the redemption fund of Loan No. 5.

Loan No. 2.—In terms of Section 3 (6) of the Financial Adjustments Act 1930 the Commission were precluded from making provision for redemption of this loan of £5,000,000. The loan was paid off from new money raised through Loan No. 5.

Loan No. 5.—This loan of £6,750,000 was mainly raised to pay off the balance of Loan No. 1 — £750,000 and the whole of Loan No. 2 of £5,000,000. The balance of the redemption fund of Loan No. 1 i.e. that relating to £750,000 has been transferred to the redemption fund of Loan No. 5 and against this has been charged the cost of raising applicable to £750,000 of the No. 5 Loan. In the case of Loan No. 2 there was no redemption fund and consequently no amount against which to charge the cost of raising the sum of £5,000,000. This latter cost amounted to £119,255 and has been added to the Capital Expenditure of the Undertakings on which the £5,000,000 was originally spent. The cost of raising the balance of the loan is being charged to the Undertakings concerned as the money is spent. We concur in the method adopted in dealing with the cost of raising of this loan.

We are satisfied that the redemption funds of Loans 3, 4, & 5 have been maintained at the amounts required by the Schedule to the Electricity Act after taking into account the transfers of the Redemption Fund of Loan No. 1 to the Redemption Funds of Loans Nos. 4 and 5.

MOVABLE PLANT AND EQUIPMENT AT UNDERTAKINGS.

During the year it was decided to transfer the cost of these assets from capital expenditure to the Working Capital of the various Undertakings. At December 31st 1934 a valuation was made and the depreciation disclosed has been written off against the Revenue Accounts of the Undertakings concerned. It is proposed to continue to make a similar revaluation each year. This procedure has our approval.

DEPRECIATION AND OBSOLESCENCE OF PLANT.

We have had occasion in the past to comment on the inadequacy of the provisions made to cover depreciation and obsolescence by way of provisions out of revenue for redemption of loan capital and allocations to Reserve Fund. This was due to the fact that the Commission was prevented in terms of the Financial Adjustments Act 1930 from making provision for the redemption of Loan No. 2 of £5,000,000. This loan having now been paid off the funds raised for this purpose are subject to redemption as from the beginning of July 1934. The joint appropriations out of revenue to the two funds being made from July last constitute an improvement on the position previously existing.

HEAD OFFICE ADMINISTRATION AND ENGINEERING EXPENSES.

As contemplated in Section 11 (2) of the Electricity Act the Commission has, as previously, made an allocation of overhead and administration charges as between the various Undertakings.

OVERINVESTMENT OF FUNDS.

It will be noted that the Redemption, Reserve and Pension Funds were overinvested at December 31st 1934.

We are informed that having the opportunity of subscribing for portion of Loan No. 5 and loan moneys not immediately required being available, the Commission decided to take advantage of securing this investment for the Funds in advance of requirements, the advance investments being in anticipation of future contributions to the Funds. The interest earned on the amounts overinvested is being credited to the loan funds from which the overinvested moneys were drawn.

This action on the part of the Commission appears to have been advantageous.

GENERAL.

As the result of our audit of the Books and Accounts of the Commission for the year 1934, and, subject to the foregoing remarks, in terms of Clause 13 (4) of the Electricity Act 1922, we certify as follows:—

- (a) We have found the accounts of the Commission to be in order.
- (b) The accounts issued present a true and correct view of the financial position of the Commission and of its transactions and of the results of trading.
- (c) Due provision has been made for the redemption and repayment of moneys borrowed.
- (d) The value of the assets of the Commission is correctly stated.
- (e) Sums fixed by the Commission have been set aside to the Reserve Fund under Section 9 as prescribed.
- (f) All our requirements and recommendations as Auditors have been complied with and carried out.

Yours faithfully,

B. HALSEY,

ALEX. AIKEN & CARTER.

Electricity Supply

Incorporated under the

BALANCE SHEET at

Loan Capital			£10,939,689 10 0
Loan No. 1: Government of the Union of South Africa	£3,000,000	0 0	
Loan No. 2: Government of the Union of South Africa	5,000,000	0 0	
	8,000,000	0 0	
<i>Less</i> —Repaid during 1933 and 1934 ...	8,000,000	0 0	
Local Registered Stocks—			
Loan No. 3: £500,000 4½ per cent. 1953/63 ...	500,000	0 0	
Loan No. 4: £2,500,000 4½ per cent. 1953 ...	2,500,000	0 0	
Loan No. 5: £6,750,000 3½ per cent. 1954/64 ...	6,750,000	0 0	
Loan No. 6: £2,500,000 3½ per cent. 1959/64 (payable in full not later than 31st May, 1935, in terms of Prospectus):			
Fully paid	1,117,450	0 0	
Partly paid	72,239	10 0	
	<u>£12,250,000</u>		
Interest Accrued on Loan Capital			45,573 5 8
Sundry Creditors and Credit Balances			171,961 7 4
Pension Fund			56,312 18 9
Redemption Fund			592,629 9 4
(As per Accounts Nos. 2 to 4)			
Loan No. 3	21,019	4 0	
Loan No. 4	396,067	0 3	
Loan No. 5	175,543	5 1	
Reserve Fund			706,231 5 5
(As per Account No. 5)			
Balance on Revenue Accounts			17,153 10 11
(As per Accounts Nos. 6 to 10)			
Natal Central Undertaking	9,891	2 9	
Withbank Undertaking	4,753	7 0	
Durban Undertaking	3,956	16 1	
Sabie Undertaking	192	16 4	
	18,794	2 2	
<i>Less</i> —Capetown Undertaking	1,640	11 3	
NOTE. —In addition to the liabilities shown above, the Commission is committed to the extent of approximately £2,636,000 for expenditure on Capital Account; also £36,200 chargeable against Reserve Fund.			
			<u>£12,529,551 7 5</u>

H. J. VAN DER BIJL, Chairman.
A. E. HARTE, C.A. (S.A.), Chief Accountant.

Johannesburg,
29th March, 1935.

Commission.

Electricity Act, 1922.

31st DECEMBER, 1934.

Expenditure on Capital Account— (As per Schedule attached.)			
Land and Rights	£140,330	12 10	
Buildings and Civil Works	2,551,577	10 3	
Machinery and Plant	6,701,187	14 0	
			£9,393,095 17 1
<i>Less</i> —Net Revenue during Construction	132,724	1 7	
Provision made prior to Financial Adjustments Act, 1930, for repayment of advances, appropriated in reduction of Capital Expenditure ...	123,650	1 10	
			256,374 3 5
			9,136,721 13 8
			38,278 8 6
Movable Plant and Equipment (less depreciation) ...			
Workshop Equipment, Instruments, Tools and Loose Plant	22,455	19 7	
Transportation Equipment	2,355	8 9	
Furniture, Fixtures and Fittings	13,467	0 2	
Stores and Materials			106,986 15 9
Sundry Debtors and Debit Balances			140,330 6 9
Cash on Current Account			1,329,866 17 11
(Including £1,047,927 15s. for instalments, Loan No. 6, paid in advance)			
Investment of Pension Fund			66,369 3 11
Amount invested in Municipal and Electricity Supply Commission Stocks	66,057	10 0	
Interest Accrued	311	13 11	
Investment of Redemption Fund			841,051 15 2
(As per Statements attached.)			
Loan No. 3	34,932	4 2	
Loan No. 4	496,150	1 11	
Loan No. 5	309,969	9 1	
Investment of Reserve Fund			869,946 5 9
Amount invested in Stocks of the Government of the Union of South Africa, Municipalities and Electricity Supply Commission; also Debentures guaranteed by the Government of the Union of South Africa ...	864,769	10 3	
Interest Accrued	5,176	15 6	
			<u>£12,529,551 7 5</u>

Referred to in our Report of 17th April, 1935.

B. HALSEY,
ALEX. AIKEN & CARTER, } Auditors.

Electricity Supply Commission.

SCHEDULE OF EXPENDITURE ON CAPITAL ACCOUNT to 31st December, 1934.

Expenditure in connection with Electricity Undertakings.	Total to 31st December, 1933.	Year ended 31st December, 1934.	Total to 31st December, 1934.
NATAL CENTRAL UNDERTAKING:			
Land and Rights	£18,521 19 5	Cr. £2 13 3	£18,519 6 2
Buildings and Civil Works	791,814 4 6	6,475 15 11	798,290 0 5
Machinery and Plant	2,647,195 11 5	124,382 4 5	2,771,577 15 10
Miscellaneous Equipment	24,877 9 3	Cr. 24,877 9 3	—
	£3,482,409 4 7	£105,977 17 10	£3,588,387 2 5
Net Revenue during Construction ...	Cr. 2,210 10 6	* 2,210 10 6	—
Provision made prior to Financial Adjustments Act, 1930, for repayment of Advances, appropriated in reduction of Capital Expenditure ...	Cr. 200,767 19 10	* 77,117 18 0	Cr. 123,650 1 10
	£3,279,430 14 3	£185,306 6 4	£3,464,737 0 7
* Appropriated in reduction of charges in raising Loan No. 5.			
WITBANK UNDERTAKING:			
Land and Rights	£9,035 19 2	£185 4 0	£9,221 3 2
Buildings and Civil Works	571,705 18 0	7,148 12 1	578,854 10 1
Machinery and Plant	1,466,949 16 4	193,101 0 5	1,660,050 16 9
Miscellaneous Equipment	52,859 9 2	Cr. 52,859 9 2	—
	£2,100,551 2 8	£147,575 7 4	£2,248,126 10 0
Net Revenue during Construction ...	Cr. 103,458 8 4	—	Cr. 103,458 8 4
	£1,997,092 14 4	£147,575 7 4	£2,144,668 1 8
CAPETOWN UNDERTAKING:			
Land and Rights	£22,416 7 10	£185 11 5	£22,601 19 3
Buildings and Civil Works	651,310 6 5	24,314 19 1	675,625 5 6
Machinery and Plant	1,218,718 5 5	180,500 2 10	1,399,218 8 3
Miscellaneous Equipment	37,596 19 7	Cr. 37,596 19 7	—
	£1,930,041 19 3	£167,403 13 9	£2,097,445 13 0
Net Revenue during Construction ...	Cr. 15,575 2 3	* 10,556 0 2	Cr. 5,019 2 1
Provision made prior to Financial Adjustments Act, 1930, for repayment of Advances, appropriated in reduction of Capital Expenditure ...	Cr. 17,982 13 0	* 17,982 13 0	—
	£1,896,484 4 0	£195,942 6 11	£2,092,426 10 11
* Appropriated in reduction of charges in raising Loan No. 5.			
DURBAN UNDERTAKING:			
Land and Rights	£29,689 3 0	—	£29,689 3 0
Buildings and Civil Works	350,387 19 10	£478 16 8	350,866 16 6
Machinery and Plant	624,620 14 10	43,043 11 2	667,664 6 0
Miscellaneous Equipment	6,728 10 8	Cr. 6,728 10 8	—
	£1,011,426 8 4	£36,793 17 2	£1,048,220 5 6
Net Revenue during Construction ...	Cr. 15,121 15 4	—	Cr. 15,121 15 4
	£996,304 13 0	£36,793 17 2	£1,033,098 10 2
SABIE UNDERTAKING:			
Land and Rights	£510 0 0	—	£510 0 0
Buildings and Civil Works	65,300 8 4	£157 13 4	65,458 1 8
Machinery and Plant	37,481 10 9	1,819 16 8	39,301 7 5
Miscellaneous Equipment	3,077 4 0	Cr. 3,077 4 0	—
	£106,369 3 1	Cr. £1,099 14 0	£105,269 9 1
Net Revenue during Construction ...	Cr. 9,124 15 10	—	Cr. 9,124 15 10
	£97,244 7 3	Cr. £1,099 14 0	£96,144 13 3
KLIP GENERATING STATION UNDERTAKING:			
Land and Rights	—	£3 18 3	£3 18 3
Buildings and Civil Works	—	74,980 16 0	74,980 16 0
Machinery and Plant	—	113,913 4 9	113,913 4 9
	—	£188,897 19 0	£188,897 19 0
RAND EXTENSION UNDERTAKING:			
Buildings and Civil Works	—	£771 1 6	£771 1 6
Machinery and Plant	—	49,461 15 0	49,461 15 0
	—	£50,232 16 6	£50,232 16 6
HEAD OFFICE:			
Land	—	£59,785 3 0	£59,785 3 0
Building	—	6,730 18 7	6,730 18 7
Furniture, Fixtures and Fittings ...	£7,093 1 11	Cr. 7,093 1 11	—
	£7,093 1 11	£59,422 19 8	£66,516 1 7
SUMMARY:			
Land and Rights	£80,173 9 5	£60,157 3 5	£140,330 12 10
Buildings and Civil Works	2,430,518 17 1	121,058 13 2	2,551,577 10 3
Machinery and Plant	5,994,965 18 9	706,221 15 3	6,701,187 14 0
Miscellaneous Equipment	132,232 14 7	Cr. 132,232 14 7	—
	£8,637,890 19 10	£755,204 17 3	£9,393,095 17 1
Net Revenue during Construction ...	Cr. 145,490 12 3	* 12,766 10 8	Cr. 132,724 1 7
Provision made prior to Financial Adjustments Act, 1930, for repayment of Advances, appropriated in reduction of Capital Expenditure ...	Cr. 218,750 12 10	* 95,100 11 0	Cr. 123,650 1 10
	£8,273,649 14 9	£863,071 18 11	£9,136,721 13 8
* Appropriated in reduction of charges in raising Loan No. 5.			

Electricity Supply Commission.

STATEMENT SHOWING DETAILS OF INVESTMENTS ON BEHALF OF THE
REDEMPTION FUND IN RESPECT OF THE £500,000 ELECTRICITY
SUPPLY COMMISSION 4½% LOCAL REGISTERED STOCK, 1953/63
(LOAN No. 3) AS AT 31st DECEMBER, 1934.

£31,500	Electricity Supply Commission 4½% Local Registered Stock, 1953/63	£34,804 15 7
	Interest Accrued	127 8 7
		£34,932 4 2

STATEMENT SHOWING DETAILS OF INVESTMENTS ON BEHALF OF THE
REDEMPTION FUND IN RESPECT OF THE £2,500,000 ELECTRICITY
SUPPLY COMMISSION 4½% LOCAL REGISTERED STOCK, 1953
(LOAN No. 4) AS AT 31st DECEMBER, 1934.

£26,200	Union of South Africa 5% (10 year) Loan, 1935	£26,167 5 0
£315,000	Union of South Africa 4½% Local Registered Stock, 1953	315,000 0 0
£51,200	South African Iron and Steel Industrial Corporation, Limited, 5% Guaranteed First Mortgage Registered Debentures, 1946/71	51,200 0 0
£100,100	Electricity Supply Commission 4½% Local Registered Stock, 1953	100,100 0 0
	Interest Accrued	3,682 16 11
		£496,150 1 11

STATEMENT SHOWING DETAILS OF INVESTMENTS ON BEHALF OF THE
REDEMPTION FUND IN RESPECT OF THE £6,750,000 ELECTRICITY
SUPPLY COMMISSION 3½% LOCAL REGISTERED STOCK, 1954/64
(LOAN No. 5) AS AT 31st DECEMBER, 1934.

£8,710	Union of South Africa 5% (10 year) Loan, 1935	£8,699 2 3
£10,000	South African Iron and Steel Industrial Corporation, Limited, 5% Guaranteed First Mortgage Registered Debentures, 1946/71	9,975 0 0
£42,750	Electricity Supply Commission 4½% Local Registered Stock, 1953/63	42,750 0 0
£252,000	Electricity Supply Commission 3½% Local Registered Stock, 1954/64	246,330 0 0
	Interest Accrued	2,215 6 10
		£309,969 9 1

A. E. HARTE, C.A. (S.A.), Chief Accountant.

Johannesburg,
29th March, 1935.

Electricity Supply

Dr. Redemption Fund Account for the
in respect of £750,000 Government of the Union of South Africa Loan

To Amount Transferred to Redemption Fund Account,						
Loan No. 5	£129,710 14 10
Witbank Undertaking	£95,936 0 11	
Durban Undertaking	26,960 15 9	
Sabie Undertaking	6,654 8 5	
Head Office	159 9 9	

£129,710 14 10

A. E. HARTE, C.A. (S.A.), Chief Accountant.

Johannesburg,
29th March, 1935.

Commission.

Account No. 1.

Period 1st January to 15th June, 1934,
(Loan No. 1) redeemable not later than the 31st December, 1954.

Cr.

By Balance at 31st December, 1933, brought forward ...						£111,928 9 2
Witbank Undertaking	£83,434 11 3	
Durban Undertaking	22,574 15 4	
Sabie Undertaking	5,790 2 2	
Head Office	129 0 5	
„ Amounts Contributed during the Year out of Revenue						8,295 9 7
Witbank Undertaking	5,458 9 11	
Durban Undertaking	2,441 19 8	
Sabie Undertaking	375 17 8	
Head Office	19 2 4	
„ Profit on Sales of Investments	10,562 2 7	
Less—Premium on Investments written off	3,097 8 10	
„ Interest Earned on Investments		7,464 13 9
Witbank Undertaking	1,503 16 3	
Durban Undertaking	411 15 2	
Sabie Undertaking	104 2 6	
Head Office	2 8 5	

£129,710 14 10

We hereby certify that we are satisfied as to the correctness of the Accounts and Books of the Redemption Fund.

B. HALSEY,
ALEX. AIKEN & CARTER, } Auditors.

Electricity Supply

Dr. Redemption Fund Account for the
in respect of £500,000 Electricity Supply Commission

To Balance as per Balance Sheet		£21,019 4 0
Natal Central Undertaking	£57 7 9	
Witbank Undertaking	78 18 0	
Capetown Undertaking	12,562 13 5	
Durban Undertaking	8,320 4 10	

£21,019 4 0

A. E. HARTE, C.A. (S.A.), Chief Accountant.

Johannesburg,
29th March, 1935.

Commission.

Account No. 2.

Year ended 31st December, 1934, Cr.
4½% Local Registered Stock 1953/63 (Loan No. 3).

By Balance at 31st December, 1933, brought forward		£6,216 3 9
Natal Central Undertaking	£17 8 3	
Capetown Undertaking	1,788 19 11	
Durban Undertaking	4,409 15 7	
„ Amounts Contributed during the Year out of Revenue					14,803 0 3
Natal Central Undertaking	39 19 6	
Witbank Undertaking	78 18 0	
Capetown Undertaking	10,773 13 6	
Durban Undertaking	3,910 9 3	
„ Interest Earned on Investments		—
Interest Earned	519 17 8	
<i>Less—Appropriated in reduction of Premium on Investments</i>	519 17 8	

£21,019 4 0

We hereby certify that we are satisfied both as to the correctness of the Accounts and Books of the Redemption Fund and as to the Maintenance of the Fund at the amount required by the Schedule to the Electricity Act, 1922.

B. HALSEY,
ALEX. AIKEN & CARTER, } Auditors.

Electricity Supply

Dr.

Redemption Fund Account for the in respect of £2,500,000 Electricity Supply Commission

To Balance as per Balance Sheet		£396,067 0 3
Witbank Undertaking	£285,557 7 7	
Capetown Undertaking	1,798 19 11	
Durban Undertaking	88,989 1 3	
Sabie Undertaking	19,147 7 5	
Head Office	<u>574 4 1</u>	
					<u>£396,067 0 3</u>

A. E. HARTE, C.A. (S.A.), Chief Accountant.

Johannesburg,
29th March, 1935.

Commission.

Year ended 31st December, 1934,

Cr.

4½% Local Registered Stock 1953 (Loan No. 4).

By Balance at 31st December, 1933, brought forward		£326,635 6 8
Witbank Undertaking	£242,417 2 11	
Durban Undertaking	67,646 6 11	
Sabie Undertaking	16,171 6 5	
Head Office	<u>400 10 5</u>	
„ Amounts Contributed during the Year out of Revenue					62,114 9 7
Witbank Undertaking	37,745 8 4	
Capetown Undertaking	1,792 5 3	
Durban Undertaking	19,801 7 8	
Sabie Undertaking	2,610 16 6	
Head Office	<u>164 11 10</u>	
„ Net Proceeds of Sales of Fixed Property					602 11 8
Witbank Undertaking	471 1 8	
Durban Undertaking	95 10 0	
Sabie Undertaking	<u>36 0 0</u>	
„ Interest Earned on Investments	16,466 10 2	
„ Profit on Sale of Investments	7,329 1 9	
				<u>23,795 11 11</u>	
Less—Premium on Investments written off	17,080 19 7	
				<u>6,714 12 4</u>	
Witbank Undertaking	4,923 14 8	
Capetown Undertaking	6 14 8	
Durban Undertaking	1,445 16 8	
Sabie Undertaking	329 4 6	
Head Office	<u>9 1 10</u>	
					<u>£396,067 0 3</u>

We hereby certify that we are satisfied both as to the correctness of the Accounts and Books of the Redemption Fund and as to the Maintenance of the Fund at the amount required by the Schedule to the Electricity Act, 1922.

B. HALSEY,
ALEX. AIKEN & CARTER, } Auditors.

Electricity Supply

**Dr. Redemption Fund Account for the
in respect of £6,750,000 Electricity Supply Commission**

To Balance as per Balance Sheet	£175,543 5 1
Natal Central Undertaking	£32,980 1 10	
Witbank Undertaking	92,014 19 8	
Capetown Undertaking	16,989 14 11	
Durban Undertaking	27,022 19 1	
Sabie Undertaking	6,369 8 11	
Head Office	166 0 8	
					£175,543 5 1

£175,543 5 1

A. E. HARTE, C.A. (S.A.), Chief Accountant.

Commission.

Account No. 4.

**Year ended 31st December, 1934,
3¼% Local Registered Stock 1954/64 (Loan No. 5).**

Cr.

By Amount Transferred from Redemption Fund Account, Loan No. 1	£129,710 14 10
Less—Proportion of Charges in Raising Loan No. 5	17,471 16 8
					£112,238 18 2
Witbank Undertaking	83,013 12 3
Durban Undertaking	23,329 4 3
Sabie Undertaking	5,758 1 7
Head Office	138 0 1
					59,912 16 7
„ Amounts Contributed during the Year out of Revenue					
Natal Central Undertaking	32,722 19 9
Witbank Undertaking	7,027 4 11
Capetown Undertaking	16,533 9 1
Durban Undertaking	3,130 1 8
Sabie Undertaking	474 9 6
Head Office	24 11 8
					334 3 8
„ Nett Proceeds of Sales of Fixed Property	
Natal Central Undertaking	12 10 2
Capetown Undertaking	321 13 6
					3,057 6 8
„ Interest Earned on Investments	
Natal Central Undertaking	244 11 11
Witbank Undertaking	1,974 2 6
Capetown Undertaking	134 12 4
Durban Undertaking	563 13 2
Sabie Undertaking	136 17 10
Head Office	3 8 11
					£175,543 5 1

We hereby certify that we are satisfied both as to the correctness of the Accounts and Books of the Redemption Fund and as to the Maintenance of the Fund at the amount required by the Schedule to the Electricity Act, 1922.

B. HALSEY,
ALEX. AIKEN & CARTER, } Auditors.

Electricity Supply

Dr.

Reserve Fund Account for the

To Expenditure during the Year on Replacements and Betterment		£23,339 2 3
Natal Central Undertaking	£5,126 19 7	
Witbank Undertaking	12,910 3 11	
Capetown Undertaking	3,218 17 6	
Durban Undertaking	2,083 1 3	
„ Balance as per Balance Sheet		706,231 5 5
Natal Central Undertaking	326,834 6 9	
Witbank Undertaking	164,523 8 0	
Capetown Undertaking	134,673 10 0	
Durban Undertaking	72,158 18 11	
Sabie Undertaking	8,041 1 9	
		£729,570 7 8

Johannesburg,
29th March, 1935.

Commission.

Account No. 5.

Year ended 31st December, 1934.

Cr.

By Balance at 31st December, 1933, brought forward ...		£591,373 3 3
Natal Central Undertaking	£276,875 16 3	
Witbank Undertaking	141,842 18 7	
Capetown Undertaking	111,625 16 9	
Durban Undertaking	54,194 15 4	
Sabie Undertaking	6,833 16 4	
„ Amounts set aside during the Year as per Revenue Accounts		83,600 0 0
Natal Central Undertaking	30,000 0 0	
Witbank Undertaking	22,000 0 0	
Capetown Undertaking	16,000 0 0	
Durban Undertaking	15,000 0 0	
Sabie Undertaking	600 0 0	
„ Other Contributions		856 14 5
„ Profit on Sales of Investments		25,141 14 6
„ Interest Earned on Investments		28,598 15 6
		£729,570 7 8

A. E. HARTE, C.A. (S.A.), Chief Accountant.

Electricity Supply

WITBANK

Dr. Revenue Account for the Year

Generation of Electricity.			
To Operation—			
Fuel	£70,494	7	10
Water, Oil, Waste and Stores	4,759	8	5
Salaries and Wages	22,225	6	7
Other Expenses	1,343	14	3
„ Maintenance—			
Stores	11,467	8	10
Salaries and Wages	11,860	6	4
Other Expenses	10,219	11	8
		£132,370	3 11
Distribution of Electricity.			
„ Operation and Maintenance—			
Stores	1,189	1	6
Salaries and Wages	2,599	17	3
Other Expenses	700	5	4
		4,489	4 1
General Expenses.			
„ Local Administration and Technical Management ...	7,065	3	2
„ General Expenses (including Maintenance of Quarters, Stores Expenses, Rates, Insurance, Pension Fund Contributions, etc.)	7,647	16	2
„ Administration, Engineering and General Expenses of Operating Party (The Victoria Falls and Transvaal Power Company, Limited)	6,637	10	0
„ Head Office Administration and General Expenses ...	3,512	10	0
„ Engineering Expenses	2,055	17	11
		26,918	17 3
		163,778	5 3
		92,155	17 11
„ Interest			
„ Redemption Fund—			
Loan No. 1	5,458	9	11
Loan No. 3	78	18	0
Loan No. 4	37,745	8	4
Loan No. 5	7,027	4	11
		50,310	1 2
„ Amount set aside to Reserve Fund		22,000	0 0
„ Balance carried down		1,785	15 4
		£330,029	19 8
„ Balance as per Balance Sheet		£4,753	7 0
		£4,753	7 0

Johannesburg,
29th March, 1935

A. E. HARTE, C.A. (S.A.), Chief Accountant.

Commission.

UNDERTAKING.

ended 31st December, 1934.

Cr.

By Sales of Electricity—			
Bulk Supplies	£254,870	16	8
Industrial Supplies	66,490	4	1
Domestic and Lighting Supplies	4,591	7	3
		£325,952	8 0
„ Other Revenue			4,077 11 8
			£330,029 19 8
By Balance at 31st December, 1933, brought forward ...		£2,967	11 8
„ Balance brought down		1,785	15 4
		£4,753	7 0

Referred to in our Report of 17th April, 1935.

B. HALSEY,
ALEX. AIKEN & CARTER, } Auditors.

Electricity Supply

CAPETOWN

Dr. Revenue Account for the Year

Generation of Electricity.			
To Proportion of Pooled Costs ... (As per attached Statement)	£100,953 10 1
„ Operation and Maintenance— Other Expenses	1,431 14 4
			£102,385 4 5
Distribution of Electricity.			
„ Operation and Maintenance— Stores	1,892 5 3
Salaries and Wages	10,797 9 10
Other Expenses	4,938 3 5
			17,627 18 6
General Expenses.			
„ Local Administration and Technical Management	6,431 8 10
„ General Expenses (including Maintenance of Quarters, Stores Expenses, Rates, Insurance, Pension Fund Contributions, etc.)	7,805 3 6
„ Head Office Administration and General Expenses	6,337 3 8
„ Engineering Expenses	3,709 4 1
			24,283 0 1
Less—Charged to Pooled Costs	2,164 1 0
			22,118 19 1
			142,132 2 0
„ Interest	96,827 2 3
„ Redemption Fund— Loan No. 3	10,773 13 6
Loan No. 4	1,792 5 3
Loan No. 5	16,533 9 1
„ Amount set aside to Reserve Fund	16,000 0 0
			141,926 10 1
Less—Charged to Pooled Costs	27,211 2 9
			114,715 7 4
„ Balance carried down	6,533 10 0
			£263,380 19 4
To Balance at 31st December, 1933, brought forward	£8,174 1 3
			£8,174 1 3

A. E. HARTE, C.A. (S.A.), Chief Accountant.

Johannesburg,
29th March, 1935.

Commission.

UNDERTAKING.

ended 31st December, 1934.

Cr.

By Sales of Electricity— Traction Supplies	£151,860 5 9	
Bulk Supplies	28,160 14 7	
Industrial Supplies	60,217 6 9	
Domestic and Lighting Supplies	20,842 12 3	
				£261,080 19 4
„ Other Revenue	2,729 10 3	
Less—Credited to Pooled Costs	429 10 3	
				2,300 0 0
				£263,380 19 4
By Balance brought down	£6,533 10 0	
„ Balance as per Balance Sheet	1,640 11 3	
				£8,174 1 3

Referred to in our Report of 17th April, 1935.

B. HALSEY,
ALEX. AIKEN & CARTER, } Auditors.

Electricity Supply Commission

SALT RIVER AND DOCK

Dr. Statement of Pooled Costs for the Year ended

	Expenditure by Electricity Supply Commission.	Expenditure by City of Capetown.	Pooled Costs.
Pooled Generation of Electricity.			
To Operation and Maintenance—			
Fuel	£159,514 12 2	£33,364 4 7	£192,878 16 9
Water, Oil, Waste and Stores ...	8,019 3 0	2,455 1 2	10,474 4 2
Salaries and Wages	14,690 6 0	11,550 15 4	26,241 1 4
Other Expenses	11,681 8 3	1,406 1 2	13,087 9 5
„ General Expenses (including Stores Expenses, Rates, Insurance, Pension Fund Contributions, etc.) ...	2,164 1 0	1,821 9 8	3,985 10 8
„ Interest	14,262 17 7	—	14,262 17 7
„ Redemption Fund	11,375 1 10	—	11,375 1 10
„ Reserve Fund	1,573 3 4	—	1,573 3 4
	£223,280 13 2	£50,597 11 11	£273,878 5 1

Capetown,
29th March, 1935.

and City of Capetown.

ROAD POWER STATIONS.

31st December, 1934, and Allocation thereof.

Cr.

By Allocation of Pooled Costs in terms of Agreement—			
Electricity Supply Commission		£100,953 10 1	
City of Capetown		172,323 13 7	
			£273,277 3 8
„ Sundry Revenue—			
Electricity Supply Commission		429 10 3	
City of Capetown		171 11 2	
			601 1 5
			£273,878 5 1

GEO. H. SWINGLER,
Manager of the Pooled Stations.

Electricity Supply

DURBAN

Revenue Account for the Year

£r.		Revenue Account for the Year	
Generation of Electricity.			
To Operation—			
Fuel	£71,761	13	3
Water, Oil, Waste and Stores	956	11	7
Salaries and Wages	12,829	3	10
Other Expenses	724	0	11
„ Maintenance—			
Stores	6,765	10	3
Salaries and Wages	10,572	4	9
Other Expenses	2,312	17	1
			£105,922 1 8
General Expenses.			
„ Local Administration and Technical Management ...	3,940	15	3
„ General Expenses (including Maintenance of Quarters, Stores Expenses, Rates, Insurance, Pension Fund Contributions, etc.)	3,826	15	9
„ Head Office Administration and General Expenses ...	5,884	10	6
„ Engineering Expenses	3,444	5	3
			16,596 6 9
			122,518 8 5
„ Interest	47,909	9	5
„ Redemption Fund—			
Loan No. 1	2,441	19	8
Loan No. 3	3,910	9	3
Loan No. 4	19,801	7	8
Loan No. 5	3,130	1	8
			29,283 18 3
„ Amount set aside to Reserve Fund	15,000	0	0
			£214,711 16 1
To Balance brought down	£2,591	12	5
„ Balance as per Balance Sheet	3,956	16	1
			£6,548 8 6

A. E. HARTE, C.A. (S.A.), Chief Accountant.

Johannesburg,
29th March, 1935.

Commission.

UNDERTAKING.

ended 31st December, 1934.

£r.

By Sales of Electricity—									
Bulk Supplies	£211,781	10	6						
„ Other Revenue	338	13	2						
„ Balance carried down	2,591	12	5						
									£214,711 16 1
By Balance at 31st December, 1933, brought forward ...	£6,548	8	6						
									£6,548 8 6

Referred to in our Report of 17th April, 1935.

B. HALSEY,
ALEX. AIKEN & CARTER, } Auditors.

Electricity Supply

SABIE

Dr. Revenue Account for the Year

Generation of Electricity.					
To Operation—					
Water, Oil, Waste and Stores	£29	18	3		
Salaries and Wages	1,800	7	3		
„ Maintenance—					
Stores	382	1	7		
Salaries and Wages	224	0	1		
Other Expenses	158	12	0		
				£2,594	19 2
Distribution of Electricity.					
„ Operation and Maintenance—					
Stores	32	3	2		
Salaries and Wages	240	19	11		
Other Expenses	137	1	9		
				410	4 10
General Expenses.					
„ Local Administration and Technical Management ...	206	4	7		
„ General Expenses (including Maintenance of Quarters, Insurance, Pension Fund Contributions, etc.) ...	231	0	2		
„ Head Office Administration and General Expenses ...	754	8	6		
„ Engineering Expenses	441	11	6		
				1,633	4 9
				4,638	8 9
				4,442	2 1
„ Interest					
„ Redemption Fund—					
Loan No. 1	375	17	8		
Loan No. 4	2,610	16	6		
Loan No. 5	474	9	6		
				3,461	3 8
„ Amount set aside to Reserve Fund				600	0 0
„ Balance carried down				133	14 10
				£13,275	9 4
To Balance as per Balance Sheet	£192	16	4		
				£192	16 4

A. E. HARTE, C.A. (S.A.), Chief Accountant.

Johannesburg,
29th March, 1935.

Commission.

UNDERTAKING.

ended 31st December, 1934.

Cr.

By Sales of Electricity—					
Mining Supplies	£13,256	4	4		
„ Other Revenue	19	5	0		
				£13,275	9 4
By Balance at 31st December, 1933, brought forward ...	£59	1	6		
„ Balance brought down	133	14	10		
	£192	16	4		

Referred to in our Report of 17th April, 1935.

B. HALSEY,
ALEX. AIKEN & CARTER, } Auditors.

Electricity Supply

Incorporated under the

BALANCE SHEET at

Loan Capital			£10,939,689 10 0
Loan No. 1: Government of the Union of South Africa	£3,000,000	0 0	
Loan No. 2: Government of the Union of South Africa	5,000,000	0 0	
	8,000,000	0 0	
<i>Less</i> —Repaid during 1933 and 1934 ...	8,000,000	0 0	
Local Registered Stocks—			
Loan No. 3: £500,000 4½ per cent. 1953/63 ...	500,000	0 0	
Loan No. 4: £2,500,000 4½ per cent. 1953 ...	2,500,000	0 0	
Loan No. 5: £6,750,000 3½ per cent. 1954/64 ...	6,750,000	0 0	
Loan No. 6: £2,500,000 3½ per cent. 1959/64 (payable in full not later than 31st May, 1935, in terms of Prospectus):			
Fully paid	1,117,450	0 0	
Partly paid	72,239	10 0	
	<u>£12,250,000</u>		
Interest Accrued on Loan Capital			45,573 5 8
Sundry Creditors and Credit Balances			171,961 7 4
Pension Fund			56,312 18 9
Redemption Fund			592,629 9 4
(As per Accounts Nos. 2 to 4)			
Loan No. 3	21,019	4 0	
Loan No. 4	396,067	0 3	
Loan No. 5	175,543	5 1	
Reserve Fund			706,231 5 5
(As per Account No. 5)			
Balance on Revenue Accounts			17,153 10 11
(As per Accounts Nos. 6 to 10)			
Natal Central Undertaking	9,891	2 9	
Withbank Undertaking	4,753	7 0	
Durban Undertaking	3,956	16 1	
Sabie Undertaking	192	16 4	
	18,794	2 2	
<i>Less</i> —Capetown Undertaking	1,640	11 3	
NOTE. —In addition to the liabilities shown above, the Commission is committed to the extent of approximately £2,636,000 for expenditure on Capital Account; also £36,200 chargeable against Reserve Fund.			
			<u>£12,529,551 7 5</u>

H. J. VAN DER BIJL, Chairman.
A. E. HARTE, C.A. (S.A.), Chief Accountant.

Johannesburg,
29th March, 1935.

Commission.

Electricity Act, 1922.

31st DECEMBER, 1934.

Expenditure on Capital Account— (As per Schedule attached.)			
Land and Rights	£140,330	12 10	
Buildings and Civil Works	2,551,577	10 3	
Machinery and Plant	6,701,187	14 0	
			£9,393,095 17 1
<i>Less</i> —Net Revenue during Construction	132,724	1 7	
Provision made prior to Financial Adjustments Act, 1930, for repayment of advances, appropriated in reduction of Capital Expenditure ...	123,650	1 10	
			256,374 3 5
			9,136,721 13 8
			38,278 8 6
Movable Plant and Equipment (less depreciation) ...			
Workshop Equipment, Instruments, Tools and Loose Plant	22,455	19 7	
Transportation Equipment	2,355	8 9	
Furniture, Fixtures and Fittings	13,467	0 2	
Stores and Materials			106,986 15 9
Sundry Debtors and Debit Balances			140,330 6 9
Cash on Current Account			1,329,866 17 11
(Including £1,047,927 15s. for instalments, Loan No. 6, paid in advance)			
Investment of Pension Fund			66,369 3 11
Amount invested in Municipal and Electricity Supply Commission Stocks	66,057	10 0	
Interest Accrued	311	13 11	
Investment of Redemption Fund			841,051 15 2
(As per Statements attached.)			
Loan No. 3	34,932	4 2	
Loan No. 4	496,150	1 11	
Loan No. 5	309,969	9 1	
Investment of Reserve Fund			869,946 5 9
Amount invested in Stocks of the Government of the Union of South Africa, Municipalities and Electricity Supply Commission; also Debentures guaranteed by the Government of the Union of South Africa ...	864,769	10 3	
Interest Accrued	5,176	15 6	
			<u>£12,529,551 7 5</u>

Referred to in our Report of 17th April, 1935.

B. HALSEY,
ALEX. AIKEN & CARTER, } Auditors.

Electricity Supply Commission.

SCHEDULE OF EXPENDITURE ON CAPITAL ACCOUNT to 31st December, 1934.

Expenditure in connection with Electricity Undertakings.	Total to 31st December, 1933.	Year ended 31st December, 1934.	Total to 31st December, 1934.
NATAL CENTRAL UNDERTAKING:			
Land and Rights	£18,521 19 5	Cr. £2 13 3	£18,519 6 2
Buildings and Civil Works	791,814 4 6	6,475 15 11	798,290 0 5
Machinery and Plant	2,647,195 11 5	124,382 4 5	2,771,577 15 10
Miscellaneous Equipment	24,877 9 3	Cr. 24,877 9 3	—
	£3,482,409 4 7	£105,977 17 10	£3,588,387 2 5
Net Revenue during Construction ...	Cr. 2,210 10 6	* 2,210 10 6	—
Provision made prior to Financial Adjustments Act, 1930, for repayment of Advances, appropriated in reduction of Capital Expenditure ...	Cr. 200,767 19 10	* 77,117 18 0	Cr. 123,650 1 10
	£3,279,430 14 3	£185,306 6 4	£3,464,737 0 7
* Appropriated in reduction of charges in raising Loan No. 5.			
WITBANK UNDERTAKING:			
Land and Rights	£9,035 19 2	£185 4 0	£9,221 3 2
Buildings and Civil Works	571,705 18 0	7,148 12 1	578,854 10 1
Machinery and Plant	1,466,949 16 4	193,101 0 5	1,660,050 16 9
Miscellaneous Equipment	52,859 9 2	Cr. 52,859 9 2	—
	£2,100,551 2 8	£147,575 7 4	£2,248,126 10 0
Net Revenue during Construction ...	Cr. 103,458 8 4	—	Cr. 103,458 8 4
	£1,997,092 14 4	£147,575 7 4	£2,144,668 1 8
CAPETOWN UNDERTAKING:			
Land and Rights	£22,416 7 10	£185 11 5	£22,601 19 3
Buildings and Civil Works	651,310 6 5	24,314 19 1	675,625 5 6
Machinery and Plant	1,218,718 5 5	180,500 2 10	1,399,218 8 3
Miscellaneous Equipment	37,596 19 7	Cr. 37,596 19 7	—
	£1,930,041 19 3	£167,403 13 9	£2,097,445 13 0
Net Revenue during Construction ...	Cr. 15,575 2 3	* 10,556 0 2	Cr. 5,019 2 1
Provision made prior to Financial Adjustments Act, 1930, for repayment of Advances, appropriated in reduction of Capital Expenditure ...	Cr. 17,982 13 0	* 17,982 13 0	—
	£1,896,484 4 0	£195,942 6 11	£2,092,426 10 11
* Appropriated in reduction of charges in raising Loan No. 5.			
DURBAN UNDERTAKING:			
Land and Rights	£29,689 3 0	—	£29,689 3 0
Buildings and Civil Works	350,387 19 10	£478 16 8	350,866 16 6
Machinery and Plant	624,620 14 10	43,043 11 2	667,664 6 0
Miscellaneous Equipment	6,728 10 8	Cr. 6,728 10 8	—
	£1,011,426 8 4	£36,793 17 2	£1,048,220 5 6
Net Revenue during Construction ...	Cr. 15,121 15 4	—	Cr. 15,121 15 4
	£996,304 13 0	£36,793 17 2	£1,033,098 10 2
SABIE UNDERTAKING:			
Land and Rights	£510 0 0	—	£510 0 0
Buildings and Civil Works	65,300 8 4	£157 13 4	65,458 1 8
Machinery and Plant	37,481 10 9	1,819 16 8	39,301 7 5
Miscellaneous Equipment	3,077 4 0	Cr. 3,077 4 0	—
	£106,369 3 1	Cr. £1,099 14 0	£105,269 9 1
Net Revenue during Construction ...	Cr. 9,124 15 10	—	Cr. 9,124 15 10
	£97,244 7 3	Cr. £1,099 14 0	£96,144 13 3
KLIP GENERATING STATION UNDERTAKING:			
Land and Rights	—	£3 18 3	£3 18 3
Buildings and Civil Works	—	74,980 16 0	74,980 16 0
Machinery and Plant	—	113,913 4 9	113,913 4 9
	—	£188,897 19 0	£188,897 19 0
RAND EXTENSION UNDERTAKING:			
Buildings and Civil Works	—	£771 1 6	£771 1 6
Machinery and Plant	—	49,461 15 0	49,461 15 0
	—	£50,232 16 6	£50,232 16 6
HEAD OFFICE:			
Land	—	£59,785 3 0	£59,785 3 0
Building	—	6,730 18 7	6,730 18 7
Furniture, Fixtures and Fittings ...	£7,093 1 11	Cr. 7,093 1 11	—
	£7,093 1 11	£59,422 19 8	£66,516 1 7
SUMMARY:			
Land and Rights	£80,173 9 5	£60,157 3 5	£140,330 12 10
Buildings and Civil Works	2,430,518 17 1	121,058 13 2	2,551,577 10 3
Machinery and Plant	5,994,965 18 9	706,221 15 3	6,701,187 14 0
Miscellaneous Equipment	132,232 14 7	Cr. 132,232 14 7	—
	£8,637,890 19 10	£755,204 17 3	£9,393,095 17 1
Net Revenue during Construction ...	Cr. 145,490 12 3	* 12,766 10 8	Cr. 132,724 1 7
Provision made prior to Financial Adjustments Act, 1930, for repayment of Advances, appropriated in reduction of Capital Expenditure ...	Cr. 218,750 12 10	* 95,100 11 0	Cr. 123,650 1 10
	£8,273,649 14 9	£863,071 18 11	£9,136,721 13 8
* Appropriated in reduction of charges in raising Loan No. 5.			

Electricity Supply Commission.

STATEMENT SHOWING DETAILS OF INVESTMENTS ON BEHALF OF THE
REDEMPTION FUND IN RESPECT OF THE £500,000 ELECTRICITY
SUPPLY COMMISSION 4½% LOCAL REGISTERED STOCK, 1953/63
(LOAN No. 3) AS AT 31st DECEMBER, 1934.

£31,500	Electricity Supply Commission 4½% Local Registered Stock, 1953/63	£34,804 15 7
	Interest Accrued	127 8 7
		£34,932 4 2

STATEMENT SHOWING DETAILS OF INVESTMENTS ON BEHALF OF THE
REDEMPTION FUND IN RESPECT OF THE £2,500,000 ELECTRICITY
SUPPLY COMMISSION 4½% LOCAL REGISTERED STOCK, 1953
(LOAN No. 4) AS AT 31st DECEMBER, 1934.

£26,200	Union of South Africa 5% (10 year) Loan, 1935	£26,167 5 0
£315,000	Union of South Africa 4½% Local Registered Stock, 1953	315,000 0 0
£51,200	South African Iron and Steel Industrial Corporation, Limited, 5% Guaranteed First Mortgage Registered Debentures, 1946/71	51,200 0 0
£100,100	Electricity Supply Commission 4½% Local Registered Stock, 1953	100,100 0 0
	Interest Accrued	3,682 16 11
		£496,150 1 11

STATEMENT SHOWING DETAILS OF INVESTMENTS ON BEHALF OF THE
REDEMPTION FUND IN RESPECT OF THE £6,750,000 ELECTRICITY
SUPPLY COMMISSION 3½% LOCAL REGISTERED STOCK, 1954/64
(LOAN No. 5) AS AT 31st DECEMBER, 1934.

£8,710	Union of South Africa 5% (10 year) Loan, 1935	£8,699 2 3
£10,000	South African Iron and Steel Industrial Corporation, Limited, 5% Guaranteed First Mortgage Registered Debentures, 1946/71	9,975 0 0
£42,750	Electricity Supply Commission 4½% Local Registered Stock, 1953/63	42,750 0 0
£252,000	Electricity Supply Commission 3½% Local Registered Stock, 1954/64	246,330 0 0
	Interest Accrued	2,215 6 10
		£309,969 9 1

A. E. HARTE, C.A. (S.A.), Chief Accountant.

Johannesburg,
29th March, 1935.

Electricity Supply

Dr. Redemption Fund Account for the
in respect of £750,000 Government of the Union of South Africa Loan

To Amount Transferred to Redemption Fund Account,						
Loan No. 5	£129,710 14 10
Witbank Undertaking	£95,936 0 11	
Durban Undertaking	26,960 15 9	
Sabie Undertaking	6,654 8 5	
Head Office	159 9 9	

£129,710 14 10

A. E. HARTE, C.A. (S.A.), Chief Accountant.

Johannesburg,
29th March, 1935.

Commission.

Account No. 1.

Period 1st January to 15th June, 1934, Cr.
(Loan No. 1) redeemable not later than the 31st December, 1954.

By Balance at 31st December, 1933, brought forward ...						£111,928 9 2
Witbank Undertaking	£83,434 11 3	
Durban Undertaking	22,574 15 4	
Sabie Undertaking	5,790 2 2	
Head Office	129 0 5	
„ Amounts Contributed during the Year out of Revenue						8,295 9 7
Witbank Undertaking	5,458 9 11	
Durban Undertaking	2,441 19 8	
Sabie Undertaking	375 17 8	
Head Office	19 2 4	
„ Profit on Sales of Investments	10,562 2 7	
Less—Premium on Investments written off	3,097 8 10	
„ Interest Earned on Investments		7,464 13 9
Witbank Undertaking	1,503 16 3	
Durban Undertaking	411 15 2	
Sabie Undertaking	104 2 6	
Head Office	2 8 5	

£129,710 14 10

We hereby certify that we are satisfied as to the correctness of the Accounts and Books of the Redemption Fund.

B. HALSEY,
ALEX. AIKEN & CARTER, } Auditors.

Electricity Supply

Dr. Redemption Fund Account for the
in respect of £500,000 Electricity Supply Commission

To Balance as per Balance Sheet		£21,019 4 0
Natal Central Undertaking	£57 7 9	
Witbank Undertaking	78 18 0	
Capetown Undertaking	12,562 13 5	
Durban Undertaking	8,320 4 10	

£21,019 4 0

A. E. HARTE, C.A. (S.A.), Chief Accountant.

Johannesburg,
29th March, 1935.

Commission.

Account No. 2.

Year ended 31st December, 1934, Cr.
4½% Local Registered Stock 1953/63 (Loan No. 3).

By Balance at 31st December, 1933, brought forward		£6,216 3 9
Natal Central Undertaking	£17 8 3	
Capetown Undertaking	1,788 19 11	
Durban Undertaking	4,409 15 7	
„ Amounts Contributed during the Year out of Revenue					14,803 0 3
Natal Central Undertaking	39 19 6	
Witbank Undertaking	78 18 0	
Capetown Undertaking	10,773 13 6	
Durban Undertaking	3,910 9 3	
„ Interest Earned on Investments		—
Interest Earned	519 17 8	
<i>Less—Appropriated in reduction of Premium on Investments</i>	519 17 8	

£21,019 4 0

We hereby certify that we are satisfied both as to the correctness of the Accounts and Books of the Redemption Fund and as to the Maintenance of the Fund at the amount required by the Schedule to the Electricity Act, 1922.

B. HALSEY,
ALEX. AIKEN & CARTER, } Auditors.

Electricity Supply

Dr. Redemption Fund Account for the
in respect of £2,500,000 Electricity Supply Commission

To	Balance as per Balance Sheet		£396,067 0 3
	Witbank Undertaking	£285,557 7 7	
	Capetown Undertaking	1,798 19 11	
	Durban Undertaking	88,989 1 3	
	Sabie Undertaking	19,147 7 5	
	Head Office	574 4 1	
		£396,067 0 3	
		£396,067 0 3	

A. E. HARTE, C.A. (S.A.), Chief Accountant.

Johannesburg,
29th March, 1935.

Commission.

Year ended 31st December, 1934, Cr.
 4½% Local Registered Stock 1953 (Loan No. 4).

By	Balance at 31st December, 1933, brought forward		£326,635 6 8
	Witbank Undertaking	£242,417 2 11	
	Durban Undertaking	67,646 6 11	
	Sabie Undertaking	16,171 6 5	
	Head Office	400 10 5	
		£326,635 6 8	
	Amounts Contributed during the Year out of Revenue		62,114 9 7
	Witbank Undertaking	37,745 8 4	
	Capetown Undertaking	1,792 5 3	
	Durban Undertaking	19,801 7 8	
	Sabie Undertaking	2,610 16 6	
	Head Office	164 11 10	
		62,114 9 7	
	Net Proceeds of Sales of Fixed Property		602 11 8
	Witbank Undertaking	471 1 8	
	Durban Undertaking	95 10 0	
	Sabie Undertaking	36 0 0	
		602 11 8	
	Interest Earned on Investments	16,466 10 2	
	Profit on Sale of Investments	7,329 1 9	
		23,795 11 11	
	<i>Less—Premium on Investments written off</i>	17,080 19 7	
		6,714 12 4	
	Witbank Undertaking	4,923 14 8	
	Capetown Undertaking	6 14 8	
	Durban Undertaking	1,445 16 8	
	Sabie Undertaking	329 4 6	
	Head Office	9 1 10	
		6,714 12 4	
		£396,067 0 3	

We hereby certify that we are satisfied both as to the correctness of the Accounts and Books of the Redemption Fund and as to the Maintenance of the Fund at the amount required by the Schedule to the Electricity Act, 1922.

B. HALSEY,
 ALEX. AIKEN & CARTER, } Auditors.

Electricity Supply

Dr. Redemption Fund Account for the
in respect of £6,750,000 Electricity Supply Commission

To Balance as per Balance Sheet		£175,543 5 1
Natal Central Undertaking	£32,980 1 10	
Witbank Undertaking	92,014 19 8	
Capetown Undertaking	16,989 14 11	
Durban Undertaking	27,022 19 1	
Sabie Undertaking	6,369 8 11	
Head Office	166 0 8	
					£175,543 5 1

A. E. HARTE, C.A. (S.A.), Chief Accountant.

Commission.

Account No. 4.

Cr. Year ended 31st December, 1934,
3¼% Local Registered Stock 1954/64 (Loan No. 5).

By Amount Transferred from Redemption Fund Account,					
Loan No. 1	£129,710 14 10
Less—Proportion of Charges in Raising Loan No. 5					17,471 16 8
					£112,238 18 2
Witbank Undertaking	83,013 12 3
Durban Undertaking	23,329 4 3
Sabie Undertaking	5,758 1 7
Head Office	138 0 1
„ Amounts Contributed during the Year out of Revenue					59,912 16 7
Natal Central Undertaking	32,722 19 9
Witbank Undertaking	7,027 4 11
Capetown Undertaking	16,533 9 1
Durban Undertaking	3,130 1 8
Sabie Undertaking	474 9 6
Head Office	24 11 8
„ Nett Proceeds of Sales of Fixed Property					334 3 8
Natal Central Undertaking	12 10 2
Capetown Undertaking	321 13 6
„ Interest Earned on Investments					3,057 6 8
Natal Central Undertaking	244 11 11
Witbank Undertaking	1,974 2 6
Capetown Undertaking	134 12 4
Durban Undertaking	563 13 2
Sabie Undertaking	136 17 10
Head Office	3 8 11
					£175,543 5 1

We hereby certify that we are satisfied both as to the correctness of the Accounts and Books of the Redemption Fund and as to the Maintenance of the Fund at the amount required by the Schedule to the Electricity Act, 1922.

B. HALSEY,
 ALEX. AIKEN & CARTER, } Auditors.

Electricity Supply

Dr. Reserve Fund Account for the

To Expenditure during the Year on Replacements and Betterment		£23,339 2 3
Natal Central Undertaking	£5,126 19 7	
Witbank Undertaking	12,910 3 11	
Capetown Undertaking	3,218 17 6	
Durban Undertaking	2,083 1 3	
„ Balance as per Balance Sheet		706,231 5 5
Natal Central Undertaking	326,834 6 9	
Witbank Undertaking	164,523 8 0	
Capetown Undertaking	134,673 10 0	
Durban Undertaking	72,158 18 11	
Sabie Undertaking	8,041 1 9	
		£729,570 7 8

Johannesburg,
29th March, 1935.

Commission.

Account No. 5.

Year ended 31st December, 1934. Cr.

By Balance at 31st December, 1933, brought forward ...		£591,373 3 3
Natal Central Undertaking	£276,875 16 3	
Witbank Undertaking	141,842 18 7	
Capetown Undertaking	111,625 16 9	
Durban Undertaking	54,194 15 4	
Sabie Undertaking	6,833 16 4	
„ Amounts set aside during the Year as per Revenue Accounts		83,600 0 0
Natal Central Undertaking	30,000 0 0	
Witbank Undertaking	22,000 0 0	
Capetown Undertaking	16,000 0 0	
Durban Undertaking	15,000 0 0	
Sabie Undertaking	600 0 0	
„ Other Contributions		856 14 5
„ Profit on Sales of Investments		25,141 14 6
„ Interest Earned on Investments		28,598 15 6
		£729,570 7 8

A. E. HARTE, C.A. (S.A.), Chief Accountant.

Electricity Supply

NATAL CENTRAL

Revenue Account for the Year

Dr.

To Operation—		Generation of Electricity.	
Fuel	£55,995 4 8		
Water, Oil, Waste and Stores	934 1 0		
Salaries and Wages	15,625 2 4		
Other Expenses	485 18 8		
„ Maintenance—			
Stores	5,006 8 10		
Salaries and Wages	9,208 17 6		
Other Expenses	2,259 1 4		
„ Electricity Purchased		£89,514 14 4	
		18 1	
„ Operation and Maintenance—		Distribution of Electricity.	
Stores	2,856 15 8		
Salaries and Wages	13,751 11 3		
Other Expenses	4,198 3 5		
		20,806 10 4	
„ General Expenses.			
Local Administration and Technical Management	6,296 14 8		
General Expenses (including Maintenance of Quarters, Stores Expenses, Rates, Insurance, Pension Fund Contributions, etc.)	8,810 1 4		
Head Office Administration and General Expenses	7,468 16 5		
Engineering Expenses	4,371 11 4		
		26,947 3 9	
		137,269 6 6	
„ Interest		159,517 6 10	
„ Redemption Fund—			
Loan No. 3	39 19 6		
Loan No. 5	32,722 19 9		
		32,762 19 3	
„ Amount set aside to Reserve Fund		30,000 0 0	
„ Balance carried down		5,414 2 6	
		£364,963 15 1	
To Balance as per Balance Sheet		£9,891 2 9	
		£9,891 2 9	

A. E. HARTE, C.A. (S.A.), Chief Accountant.

Johannesburg,
29th March, 1935.

Commission.

UNDERTAKING.

ended 31st December, 1934.

Cr.

By Sales of Electricity—		Cr.	
Traction Supplies	£298,553 11 3		
Bulk Supplies	43,525 0 0		
Industrial Supplies	14,679 1 4		
Domestic and Lighting Supplies	4,278 8 6		
		£361,036 1 1	
„ Other Revenue		3,927 14 0	
		£364,963 15 1	
By Balance at 31st December, 1933, brought forward	£4,477 0 3		
„ Balance brought down	5,414 2 6		
		£9,891 2 9	

Referred to in our Report of 17th April, 1935.

B. HALSEY,
ALEX. AIKEN & CARTER, } Auditors.

Electricity Supply

WITBANK

Dr. Revenue Account for the Year

		Generation of Electricity.			
To Operation—					
Fuel	£70,494	7	10		
Water, Oil, Waste and Stores	4,759	8	5		
Salaries and Wages	22,225	6	7		
Other Expenses	1,343	14	3		
„ Maintenance—					
Stores	11,467	8	10		
Salaries and Wages	11,860	6	4		
Other Expenses	10,219	11	8		
				£132,370	3 11
		Distribution of Electricity.			
„ Operation and Maintenance—					
Stores	1,189	1	6		
Salaries and Wages	2,599	17	3		
Other Expenses	700	5	4		
				4,489	4 1
		General Expenses.			
„ Local Administration and Technical Management ...	7,065	3	2		
„ General Expenses (including Maintenance of Quarters, Stores Expenses, Rates, Insurance, Pension Fund Contributions, etc.)	7,647	16	2		
„ Administration, Engineering and General Expenses of Operating Party (The Victoria Falls and Transvaal Power Company, Limited)	6,637	10	0		
„ Head Office Administration and General Expenses ...	3,512	10	0		
„ Engineering Expenses	2,055	17	11		
				26,918	17 3
				163,778	5 3
				92,155	17 11
„ Interest					
„ Redemption Fund—					
Loan No. 1	5,458	9	11		
Loan No. 3	78	18	0		
Loan No. 4	37,745	8	4		
Loan No. 5	7,027	4	11		
				50,310	1 2
„ Amount set aside to Reserve Fund				22,000	0 0
„ Balance carried down				1,785	15 4
				£330,029	19 8
„ Balance as per Balance Sheet	£4,753	7	0		
	£4,753	7	0		

Johannesburg,
29th March, 1935

A. E. HARTE, C.A. (S.A.), Chief Accountant.

Commission.

UNDERTAKING.

ended 31st December, 1934.

Cr.

By Sales of Electricity—					
Bulk Supplies	£254,870	16	8		
Industrial Supplies	66,490	4	1		
Domestic and Lighting Supplies	4,591	7	3		
				£325,952	8 0
„ Other Revenue				4,077	11 8
				£330,029	19 8
By Balance at 31st December, 1933, brought forward ...	£2,967	11	8		
„ Balance brought down	1,785	15	4		
	£4,753	7	0		

Referred to in our Report of 17th April, 1935.

B. HALSEY,
ALEX. AIKEN & CARTER, } Auditors.

Electricity Supply

CAPE TOWN

Dr. Revenue Account for the Year

Generation of Electricity.			
To Proportion of Pooled Costs ... (As per attached Statement)	£100,953 10 1
„ Operation and Maintenance— Other Expenses	1,431 14 4
			£102,385 4 5
Distribution of Electricity.			
„ Operation and Maintenance— Stores	1,892 5 3
Salaries and Wages	10,797 9 10
Other Expenses	4,938 3 5
			17,627 18 6
General Expenses.			
„ Local Administration and Technical Management	6,431 8 10
„ General Expenses (including Maintenance of Quarters, Stores Expenses, Rates, Insurance, Pension Fund Contributions, etc.)	7,805 3 6
„ Head Office Administration and General Expenses	6,337 3 8
„ Engineering Expenses	3,709 4 1
			24,283 0 1
Less—Charged to Pooled Costs	2,164 1 0
			22,118 19 1
			142,132 2 0
„ Interest	96,827 2 3
„ Redemption Fund— Loan No. 3	10,773 13 6
Loan No. 4	1,792 5 3
Loan No. 5	16,533 9 1
„ Amount set aside to Reserve Fund	16,000 0 0
			141,926 10 1
Less—Charged to Pooled Costs	27,211 2 9
			114,715 7 4
„ Balance carried down	6,533 10 0
			£263,380 19 4
To Balance at 31st December, 1933, brought forward	£8,174 1 3
			£8,174 1 3

A. E. HARTE, C.A. (S.A.), Chief Accountant.

Johannesburg,
29th March, 1935.

Commission.

UNDERTAKING.

ended 31st December, 1934.

Cr.

By Sales of Electricity— Traction Supplies	£151,860 5 9	
Bulk Supplies	28,160 14 7	
Industrial Supplies	60,217 6 9	
Domestic and Lighting Supplies	20,842 12 3	
				£261,080 19 4
„ Other Revenue	2,729 10 3	
Less—Credited to Pooled Costs	429 10 3	
				2,300 0 0
				£263,380 19 4
By Balance brought down	£6,533 10 0	
„ Balance as per Balance Sheet	1,640 11 3	
				£8,174 1 3

Referred to in our Report of 17th April, 1935.

B. HALSEY,
ALEX. AIKEN & CARTER, } Auditors.

Electricity Supply Commission

SALT RIVER AND DOCK

Dr. Statement of Pooled Costs for the Year ended

	Expenditure by Electricity Supply Commission.	Expenditure by City of Capetown.	Pooled Costs.
Pooled Generation of Electricity.			
To Operation and Maintenance—			
Fuel	£159,514 12 2	£33,364 4 7	£192,878 16 9
Water, Oil, Waste and Stores ...	8,019 3 0	2,455 1 2	10,474 4 2
Salaries and Wages	14,690 6 0	11,550 15 4	26,241 1 4
Other Expenses	11,681 8 3	1,406 1 2	13,087 9 5
„ General Expenses (including Stores Expenses, Rates, Insurance, Pension Fund Contributions, etc.) ...	2,164 1 0	1,821 9 8	3,985 10 8
„ Interest	14,262 17 7	—	14,262 17 7
„ Redemption Fund	11,375 1 10	—	11,375 1 10
„ Reserve Fund	1,573 3 4	—	1,573 3 4
	£223,280 13 2	£50,597 11 11	£273,878 5 1

Capetown,
29th March, 1935.

and City of Capetown.

ROAD POWER STATIONS.

31st December, 1934, and Allocation thereof.

Cr.

By Allocation of Pooled Costs in terms of Agreement—			
Electricity Supply Commission	£100,953 10 1		
City of Capetown	172,323 13 7		
			£273,277 3 8
„ Sundry Revenue—			
Electricity Supply Commission	429 10 3		
City of Capetown	171 11 2		
			601 1 5
			£273,878 5 1

GEO. H. SWINGLER,
Manager of the Pooled Stations.

Electricity Supply

DURBAN

Revenue Account for the Year

Rr.	Generation of Electricity.						
To Operation—							
Fuel	£71,761	13	3				
Water, Oil, Waste and Stores	956	11	7				
Salaries and Wages	12,829	3	10				
Other Expenses	724	0	11				
„ Maintenance—							
Stores	6,765	10	3				
Salaries and Wages	10,572	4	9				
Other Expenses	2,312	17	1				
				£105,922	1	8	
	General Expenses.						
„ Local Administration and Technical Management ...	3,940	15	3				
„ General Expenses (including Maintenance of Quarters, Stores Expenses, Rates, Insurance, Pension Fund Contributions, etc.)	3,826	15	9				
„ Head Office Administration and General Expenses ...	5,884	10	6				
„ Engineering Expenses	3,444	5	3				
				16,596	6	9	
				122,518	8	5	
„ Interest	47,909	9	5				
„ Redemption Fund—							
Loan No. 1	2,441	19	8				
Loan No. 3	3,910	9	3				
Loan No. 4	19,801	7	8				
Loan No. 5	3,130	1	8				
				29,283	18	3	
„ Amount set aside to Reserve Fund	15,000	0	0				
				£214,711	16	1	
To Balance brought down	£2,591	12	5				
„ Balance as per Balance Sheet	3,956	16	1				
				£6,548	8	6	

A. E. HARTE, C.A. (S.A.), Chief Accountant.

Johannesburg,
29th March, 1935.

Commission.

UNDERTAKING.

ended 31st December, 1934.

Cr.

By Sales of Electricity—						
Bulk Supplies	£211,781	10	6			
„ Other Revenue	338	13	2			
„ Balance carried down	2,591	12	5			
				£214,711	16	1
By Balance at 31st December, 1933, brought forward ...	£6,548	8	6			
				£6,548	8	6

Referred to in our Report of 17th April, 1935.

B. HALSEY,
ALEX. AIKEN & CARTER, } Auditors.

Electricity Supply

SABIE

Dr. Revenue Account for the Year

Generation of Electricity.					
To Operation—					
Water, Oil, Waste and Stores	£29	18	3		
Salaries and Wages	1,800	7	3		
„ Maintenance—					
Stores	382	1	7		
Salaries and Wages	224	0	1		
Other Expenses	158	12	0		
				£2,594	19 2
Distribution of Electricity.					
„ Operation and Maintenance—					
Stores	32	3	2		
Salaries and Wages	240	19	11		
Other Expenses	137	1	9		
				410	4 10
General Expenses.					
„ Local Administration and Technical Management ...	206	4	7		
„ General Expenses (including Maintenance of Quarters, Insurance, Pension Fund Contributions, etc.) ...	231	0	2		
„ Head Office Administration and General Expenses ...	754	8	6		
„ Engineering Expenses	441	11	6		
				1,633	4 9
				4,638	8 9
				4,442	2 1
„ Interest					
„ Redemption Fund—					
Loan No. 1	375	17	8		
Loan No. 4	2,610	16	6		
Loan No. 5	474	9	6		
				3,461	3 8
„ Amount set aside to Reserve Fund				600	0 0
„ Balance carried down				133	14 10
				£13,275	9 4
To Balance as per Balance Sheet	£192	16	4		
				£192	16 4

A. E. HARTE, C.A. (S.A.), Chief Accountant.

Johannesburg,
29th March, 1935.

Commission.

UNDERTAKING.

ended 31st December, 1934.

Cr.

By Sales of Electricity—					
Mining Supplies	£13,256	4	4		
„ Other Revenue	19	5	0		
By Balance at 31st December, 1933, brought forward ...	£59	1	6		
„ Balance brought down	133	14	10		
	£192	16	4		

Referred to in our Report of 17th April, 1935.

B. HALSEY,
ALEX. AIKEN & CARTER, } Auditors.

Electricity Supply Commission.

STATEMENT No. 1.

Summary of principal plant and equipment installed at the Commission's several Undertakings as at 31st December, 1934:—

POWER STATIONS.

Colenso (Natal Central Undertaking) ...	}	Steam
Witbank		
Congella (Durban Undertaking) ...		
Salt River (Capetown Undertaking) ...		
Sabie		

BOILER PLANT.

Power Station.	No. of Boilers.	Normal Rating of each Boiler. Lbs. of steam per hour.	Total Rating of all Boilers. Lbs. of steam per hour.	Pressure. Lbs. per square inch.
Witbank	16	70,000	1,120,000	225
Colenso	10	60,000	600,000	270
Congella	{ 6 2	{ 60,000 100,000	560,000	{ 270 300
Salt River	{ 4 4	{ 60,000 100,000	640,000	{ 270 425
Totals	42		2,920,000	

GENERATING PLANT.

Power Station.	No. of Generators.	Normal Rating of Each Generator.		Total Rating of Generator House.		Voltage of Generation
		Kilo-watts.	Kilovolt Amperes.	Kilo-watts.	Kilovolt Amperes.	
Witbank	5	20,000	23,500	100,000	117,500	6,600
Colenso	5	12,000	13,500	60,000	67,500	6,600
Congella	{ 2 3 1	{ 6,000 12,000 20,000	{ 7,500 15,000 25,000	68,000	85,000	6,600
Salt River	{ 3 2	{ 10,000 20,000	{ 11,000 25,000	70,000	83,000	{ 12,000 33,000
Sabie	3	450	600	1,350	1,800	3,300
Totals	24			299,350	354,800	

TRANSMISSION LINES AND CABLES.

Undertaking.	88,000 volts. Route Miles.	33,000 volts. Route Miles.	21,000 volts. Route Miles.	12,000, 11,000 volts. Route Miles.	6,600, 2,200 volts. Route Miles.	3,800 volts. Route Miles.	Total Route Miles.
Natal Central ...	275	50·3	—	—	44·2	18·6	388·1
Witbank ...	—	—	76·6	—	8·1	16·5	101·2
Capetown ...	—	210·1	—	28·5	39·1	75·3	353·0
Sabie ...	—	—	7·2	—	2·2	—	9·4
Totals ...	275	260·4	83·8	28·5	93·6	110·4	851·7

TRANSFORMERS.

(Step-up and Step-down.)

Undertaking.	Capacity. Kilovolt Amperes.
Natal Central ...	141,750
Witbank ...	175,361
Capetown ...	68,512
Durban ...	6,770
Sabie ...	3,115
Total ...	395,508

CONVERTING SUB-STATIONS.

Type.	No. of Sub-stations.	No. of Sets.	Rating Kilowatts.
Motor Generators ...	{ 1	1	150
	{ 13	23	46,000
Rotary Converters ...	6	12	24,000
Totals ...	20	36	70,150

STAFF QUARTERS.

	Brick Buildings.	Wood and Iron Buildings.	Total.
Married Staff Quarters ...	95	18	113
Single Staff Quarters ...	9	1	10
Totals ...	104	19	123

Electricity Supply Commission.

STATEMENT No. 1.

Summary of principal plant and equipment installed at the Commission's several Undertakings as at 31st December, 1934:—

POWER STATIONS.

Colenso (Natal Central Undertaking) ...	}	Steam
Witbank		
Congella (Durban Undertaking) ...		
Salt River (Capetown Undertaking) ...		
Sabie		

BOILER PLANT.

Power Station.	No. of Boilers.	Normal Rating of each Boiler. Lbs. of steam per hour.	Total Rating of all Boilers. Lbs. of steam per hour.	Pressure. Lbs. per square inch.
Witbank	16	70,000	1,120,000	225
Colenso	10	60,000	600,000	270
Congella	{ 6 2	{ 60,000 100,000	560,000	{ 270 300
Salt River	{ 4 4	{ 60,000 100,000	640,000	{ 270 425
Totals	42		2,920,000	

GENERATING PLANT.

Power Station.	No. of Generators.	Normal Rating of Each Generator.		Total Rating of Generator House.		Voltage of Generation
		Kilo-watts.	Kilovolt Amperes.	Kilo-watts.	Kilovolt Amperes.	
Witbank	5	20,000	23,500	100,000	117,500	6,600
Colenso	5	12,000	13,500	60,000	67,500	6,600
Congella	{ 2 3 1	{ 6,000 12,000 20,000	{ 7,500 15,000 25,000	68,000	85,000	6,600
Salt River	{ 3 2	{ 10,000 20,000	{ 11,000 25,000	70,000	83,000	{ 12,000 33,000
Sabie	3	450	600	1,350	1,800	3,300
Totals	24			299,350	354,800	

TRANSMISSION LINES AND CABLES.

Undertaking.	88,000 volts. Route Miles.	33,000 volts. Route Miles.	21,000 volts. Route Miles.	12,000, 11,000 volts. Route Miles.	6,600, 2,200 volts. Route Miles.	3,800 volts. Route Miles.	Total Route Miles.
Natal Central ...	275	50·3	—	—	44·2	18·6	388·1
Witbank ...	—	—	76·6	—	8·1	16·5	101·2
Capetown ...	—	210·1	—	28·5	39·1	75·3	353·0
Sabie ...	—	—	7·2	—	2·2	—	9·4
Totals ...	275	260·4	83·8	28·5	93·6	110·4	851·7

TRANSFORMERS.

(Step-up and Step-down.)

Undertaking.	Capacity. Kilovolt Amperes.
Natal Central ...	141,750
Witbank ...	175,361
Capetown ...	68,512
Durban ...	6,770
Sabie ...	3,115
Total ...	395,508

CONVERTING SUB-STATIONS.

Type.	No. of Sub-stations.	No. of Sets.	Rating Kilowatts.
Motor Generators ...	1 13	1	150
		23	46,000
Rotary Converters ...	6	12	24,000
Totals ...	20	36	70,150

STAFF QUARTERS.

	Brick Buildings.	Wood and Iron Buildings.	Total.
Married Staff Quarters ...	95	18	113
Single Staff Quarters ...	9	1	10
Totals ...	104	19	123

Electricity Supply Commission.

STATEMENT No. 2.

Summary of principal plant and equipment in course of installation or on order as at 31st December, 1934:—

BOILER PLANT.

No. of Boilers.		Each.	Capacity in lbs. of steam per hour (normal rating).		Pressure, lbs. sq. inch.
			Total.		
4	...	70,000	...	280,000	...
8	...	180,000	...	1,440,000	...
Totals 12	...	—	...	1,720,000	...

GENERATING PLANT.

No. of Sets.		Capacity each, Kilowatts.		Total Capacity, Kilowatts.	
		Total.		Total.	
1	...	20,000	...	20,000	
4	...	33,000	...	132,000	
1	...	7,000 (House Set)		7,000	
Totals 6	...	60,000	...	159,000	

TRANSMISSION LINE AND CABLES.

		88,000	21,000	11,000	380/220	Totals.
		Volts.	Volts.	Volts.	Volts.	
Route Miles.	Route Miles.	Route Miles.	Route Miles.	Route Miles.	Route Miles.	
Overhead Lines	...	127	18	17·2	5	167·2

TRANSFORMERS

(Step-up and Step-down).

Total capacity in course of installation or on order	Kilovolt Amperes. 14,860
--	-----	-----------------------------

CONVERTING SUBSTATIONS.

Type.	No. of Substations		No. of Sets.		Rating. Kilovolt Amperes.
Mercury Arc Rectifiers	...	3	...	6	...
					9,000

Electricity Supply Commission.

STATEMENT No. 3.

STATEMENT SHOWING THE PRICE OR RENT OF LAND OR RIGHTS OR INTERESTS IN OR OVER LAND
OR OTHER PROPERTY ACQUIRED OR HIRED BY THE COMMISSION DURING THE YEAR 1934.

(See previous Annual Reports for Rights or Interests in or over Land acquired prior to 1934.)

Area.		Farm or Lot.	District.	Title.	Purchase Price or Rental.	Acquired From.	Purpose for Which Required.	
Acres.	Roods. Perches.							
NATAL CENTRAL UNDERTAKING.								
		Subdivision B of Cornwall 8420	Klip River	Servitude of Right-of-Way in Perpetuity	—	Durban Navigation Collieries, Ltd.	Power Conductors	
		Lot 6 of Uitkomst and Doornrug	Pietermaritzburg	Servitude of Right-of-Way in Perpetuity	£12 3 10	W. Mercer	Power Conductors	
		Lot 30a of Vaalkop Kingthorpe of Dadelfontein	Pietermaritzburg	Servitude of Right-of-Way in Perpetuity	9 0 4	A. W. Fuller	Power Conductors	
		Remainder of Albinia and Clifton	Durban	Servitude of Right-of-Way in Perpetuity	15 19 1	C. H. Gillitt	Power Conductors	
		Ethelvale of Vaalkop and Dadelfontein	Pietermaritzburg	Servitude of Right-of-Way in Perpetuity	8 11 0	J. W. Thrash	Power Conductors	
		Melbourne of Vaalkop and Dadelfontein, and Zandfontein	Pietermaritzburg	Servitude of Right-of-Way in Perpetuity	14 17 6	C. E. H. Thrash	Power Conductors	
		Lot 44 of Town Lands	Pietermaritzburg	Servitude of Right-of-Way in Perpetuity	2 5 0	Magwanyane	Power Conductors	
		Subdivision B of Uitvlugt	Pietermaritzburg	Servitude of Right-of-Way in Perpetuity	1 0 0	A. F. Allerston	Power Conductors	
		Subdivision of Sandspruit and Sterkspruit	Pietermaritzburg	Servitude of Right-of-Way in Perpetuity	19 10 10	G. E. Stuart	Power Conductors	
		Assagay Kraal	Pietermaritzburg	Servitude of Right-of-Way in Perpetuity	16 0 9	Bothas Hill Estates	Power Conductors	
		Subdivision H of Lot 44 Town Lands	Pietermaritzburg	Servitude of Right-of-Way in Perpetuity	2 5 0	E. Moorhead	Power Conductors	
		Lot 2 of Uitkomst and Doornrug	Pietermaritzburg	Servitude of Right-of-Way in Perpetuity	6 1 0	A. Melville	Power Conductors	
		Subdivisions of Lamonts Vale	Pietermaritzburg	Servitude of Right-of-Way in Perpetuity	13 4 2	F. Lester	Power Conductors	
		Lots 12 and 13 of Uitkomst and Doornrug	Pietermaritzburg	Servitude of Right-of-Way in Perpetuity	6 19 3	C. McLean	Power Conductors	
		Lots F and A of Lamonts Vale	Pietermaritzburg	Servitude of Right-of-Way in Perpetuity	11 5 6	H. Woods	Power Conductors	
WITBANK UNDERTAKING.								
		Portion of Kromdraai No. 30	Witbank	Servitude of Right-of-Way in Perpetuity	£10 0 0	P. Dickson	Power Conductors	
		Portion of Uitspan No. 15	Witbank	Servitude of Right-of-Way in Perpetuity	20 0 0	W. E. Chrimes	Power Conductors	
		Portion of Blaauwkrantz No. 62	Witbank	Servitude of Right-of-Way in Perpetuity	5 0 0	P. J. de Wet	Power Conductors	
		Remaining portion of Kromdraai No. 30	Witbank	Servitude of Right-of-Way in Perpetuity	35 0 0	H. J. Bekker	Power Conductors	
		Elandspruit No. 507	Middelburg	Servitude of Right-of-Way in Perpetuity	15 0 0	I. M. Prinsloo	Power Conductors	
		Portion B of Elandspruit No. 507	Middelburg	Servitude of Right-of-Way in Perpetuity	28 0 0	M. M. Prinsloo	Power Conductors	
		Portion 5 of Elandspruit No. 507	Middelburg	Servitude of Right-of-Way in Perpetuity	18 0 0	A. G. Joubert	Power Conductors	
CAPETOWN UNDERTAKING.								
		Groot Drakenstein	Stellenbosch	Servitude of Right-of-Way in Perpetuity	—	E. D. Micklem G. J. R. Frames	Power Conductors	
		Portions of Banghoek	Stellenbosch	Servitude of Right-of-Way in Perpetuity	£10 0 0	C. Roode	Power Conductors	
		Bakenfontein	Malmesbury	Servitude of Right-of-Way in Perpetuity	50 0 0	Estate of late S. A. Walters	Power Conductors	
HEAD OFFICE.								
Morgen.	Sq. Roods.	Sq. Feet.						
	138	128	Stands 249, 250, 252, 254, 257 and 258 Marshalls Township	Johannesburg	Freehold	£57,500	Unity Buildings Proprietary, Ltd.	New Premises

Electricity Supply Commission.

STATEMENT No. 2.

Summary of principal plant and equipment in course of installation or on order as at 31st December, 1934:—

BOILER PLANT.

No. of Boilers.		Each.	Capacity in lbs. of steam per hour (normal rating).		Pressure, lbs. sq. inch.	
			Total.			
4	...	70,000	...	280,000	...	225
8	...	180,000	...	1,440,000	...	350
Totals 12	...	—	...	1,720,000	...	—

GENERATING PLANT.

No. of Sets.		Capacity each, Kilowatts.		Total Capacity, Kilowatts.	
		Total.		Total.	
1	...	20,000	...	20,000	
4	...	33,000	...	132,000	
1	...	7,000 (House Set)		7,000	
Totals 6	...	60,000	...	159,000	

TRANSMISSION LINE AND CABLES.

		88,000	21,000	11,000	380/220	Totals.
		Volts.	Volts.	Volts.	Volts.	
Route Miles.	Route Miles.	Route Miles.	Route Miles.	Route Miles.	Route Miles.	
Overhead Lines	...	127	18	17·2	5	167·2

TRANSFORMERS

(Step-up and Step-down).

Total capacity in course of installation or on order	Kilovolt Amperes. 14,860
--	-----	-----------------------------

CONVERTING SUBSTATIONS.

Type.		No. of Substations		No. of Sets.		Rating, Kilovolt Amperes.
Mercury Arc Rectifiers	...	3	...	6	...	9,000

Electricity Supply Commission.

STATEMENT No. 3.

STATEMENT SHOWING THE PRICE OR RENT OF LAND OR RIGHTS OR INTERESTS IN OR OVER LAND
OR OTHER PROPERTY ACQUIRED OR HIRED BY THE COMMISSION DURING THE YEAR 1934.

(See previous Annual Reports for Rights or Interests in or over Land acquired prior to 1934.)

Area.		Farm or Lot.	District.	Title.	Purchase Price or Rental.	Acquired From.	Purpose for Which Required.	
Acres.	Roods. Perches.							
NATAL CENTRAL UNDERTAKING.								
		Subdivision B of Cornwall 8420	Klip River	Servitude of Right-of-Way in Perpetuity	—	Durban Navigation Collieries, Ltd.	Power Conductors	
		Lot 6 of Uitkomst and Doornrug	Pietermaritzburg	Servitude of Right-of-Way in Perpetuity	£12 3 10	W. Mercer	Power Conductors	
		Lot 30a of Vaalkop Kingthorpe of Dadelfontein	Pietermaritzburg	Servitude of Right-of-Way in Perpetuity	9 0 4	A. W. Fuller	Power Conductors	
		Remainder of Albinia and Clifton	Durban	Servitude of Right-of-Way in Perpetuity	15 19 1	C. H. Gillitt	Power Conductors	
		Ethelvale of Vaalkop and Dadelfontein	Pietermaritzburg	Servitude of Right-of-Way in Perpetuity	8 11 0	J. W. Thrash	Power Conductors	
		Melbourne of Vaalkop and Dadelfontein, and Zandfontein	Pietermaritzburg	Servitude of Right-of-Way in Perpetuity	14 17 6	C. E. H. Thrash	Power Conductors	
		Lot 44 of Town Lands	Pietermaritzburg	Servitude of Right-of-Way in Perpetuity	2 5 0	Magwanyane	Power Conductors	
		Subdivision B of Uitvlugt	Pietermaritzburg	Servitude of Right-of-Way in Perpetuity	1 0 0	A. F. Allerston	Power Conductors	
		Subdivision of Sandspruit and Sterkspruit	Pietermaritzburg	Servitude of Right-of-Way in Perpetuity	19 10 10	G. E. Stuart	Power Conductors	
		Assagay Kraal	Pietermaritzburg	Servitude of Right-of-Way in Perpetuity	16 0 9	Bothas Hill Estates	Power Conductors	
		Subdivision H of Lot 44 Town Lands	Pietermaritzburg	Servitude of Right-of-Way in Perpetuity	2 5 0	E. Moorhead	Power Conductors	
		Lot 2 of Uitkomst and Doornrug	Pietermaritzburg	Servitude of Right-of-Way in Perpetuity	6 1 0	A. Melville	Power Conductors	
		Subdivisions of Lamonts Vale	Pietermaritzburg	Servitude of Right-of-Way in Perpetuity	13 4 2	F. Lester	Power Conductors	
		Lots 12 and 13 of Uitkomst and Doornrug	Pietermaritzburg	Servitude of Right-of-Way in Perpetuity	6 19 3	C. McLean	Power Conductors	
		Lots F and A of Lamonts Vale	Pietermaritzburg	Servitude of Right-of-Way in Perpetuity	11 5 6	H. Woods	Power Conductors	
WITBANK UNDERTAKING.								
		Portion of Kromdraai No. 30	Witbank	Servitude of Right-of-Way in Perpetuity	£10 0 0	P. Dickson	Power Conductors	
		Portion of Uitspan No. 15	Witbank	Servitude of Right-of-Way in Perpetuity	20 0 0	W. E. Chrimes	Power Conductors	
		Portion of Blaauwkrantz No. 62	Witbank	Servitude of Right-of-Way in Perpetuity	5 0 0	P. J. de Wet	Power Conductors	
		Remaining portion of Kromdraai No. 30	Witbank	Servitude of Right-of-Way in Perpetuity	35 0 0	H. J. Bekker	Power Conductors	
		Elandspruit No. 507	Middelburg	Servitude of Right-of-Way in Perpetuity	15 0 0	I. M. Prinsloo	Power Conductors	
		Portion B of Elandspruit No. 507	Middelburg	Servitude of Right-of-Way in Perpetuity	28 0 0	M. M. Prinsloo	Power Conductors	
		Portion 5 of Elandspruit No. 507	Middelburg	Servitude of Right-of-Way in Perpetuity	18 0 0	A. G. Joubert	Power Conductors	
CAPETOWN UNDERTAKING.								
		Groot Drakenstein	Stellenbosch	Servitude of Right-of-Way in Perpetuity	—	E. D. Micklem G. J. R. Frames	Power Conductors	
		Portions of Banghoek	Stellenbosch	Servitude of Right-of-Way in Perpetuity	£10 0 0	C. Roode	Power Conductors	
		Bakenfontein	Malmesbury	Servitude of Right-of-Way in Perpetuity	50 0 0	Estate of late S. A. Walters	Power Conductors	
HEAD OFFICE.								
Morgen.	Sq. Roods.	Sq. Feet.						
	138	128	Stands 249, 250, 252, 254, 257 and 258 Marshalls Township	Johannesburg	Freehold	£57,500	Unity Buildings Proprietary, Ltd.	New Premises

MUNICIPAL ELECTRICITY SUPPLY SCHEMES.

Up to 31st December, 1934, 266 Municipal electricity supply schemes had been reported on by the Commission, and supplementary reports upon tenders had been submitted in respect of 122 schemes.

During the year 1934 the following schemes were reported upon by the Commission, viz.:—

New Schemes.	Extension Schemes.	Tenders.
CAPE.		
Laingsburg Piquetberg	George Upington Victoria West Villiersdorp Worcester	Barkly East Oudtshoorn Victoria West Villiersdorp Worcester
TRANSVAAL.		
Amsterdam Greymont Wolmaransstad	Bloemhof Ermelo Johannesburg Krugersdorp Lichtenburg Roodepoort-Maraisburg	
O.F.S.		
		Kroonstad
NATAL.		
Harding	Paulpietersburg	
SOUTH-WEST AFRICA.		
	Windhoek	

Of the total of 266 Municipal electricity supply schemes reported upon by the Commission up to the end of the year 1934, 110 were new schemes.

Electricity Supply Commission.

STATEMENT No. 1.

Units sold to all consumers during the past nine years.

Year.	Natal Central Undertaking.	Witbank Undertaking.	Capetown Undertaking.	Durban Undertaking.	Sabie Undertaking.	Total.
1926 ...	719,666	160,031,213	280,242	—	727,401	161,758,522
1927 ...	104,206,235	439,061,722	5,811,836	—	1,938,940	551,018,733
1928 ...	114,213,037	464,267,213	31,038,697	15,563,460	2,829,888	627,912,295
1929 ...	123,911,774	543,091,138	47,945,690	78,873,576	3,176,173	796,998,351
1930 ...	117,075,484	618,951,364	49,772,016	99,228,000	4,585,060	889,611,924
1931 ...	101,131,880	603,359,113	52,109,958	103,899,765	6,585,553	867,086,269
1932 ...	100,292,933	610,285,123	64,268,873	109,808,223	6,080,010	890,735,162
1933 ...	109,186,538	639,368,114	100,685,629	118,538,312	6,349,651	974,128,244
1934 ...	124,898,129	648,245,530	73,583,974	131,104,182	7,329,679	985,161,494

STATEMENT No. 2.

The distribution of the units sold during 1934 as between the various classes of consumers.

Undertaking.	Traction.	Bulk.	Industrial and Mining.	Domestic and Lighting.	Total.
Natal Central ...	101,824,630	18,628,836	3,826,523	618,140	124,898,129
Witbank ...	—	591,477,458	55,934,654	833,418	648,245,530
Capetown ...	44,560,818	8,661,702	18,810,321	1,551,133	73,583,974
Durban ...	—	131,104,182	—	—	131,104,182
Sabie ...	—	—	7,329,679	—	7,329,679
Totals ...	146,385,448	749,872,178	85,901,177	3,002,691	985,161,494

STATEMENT No. 3.

Statistics relating to the Commission's Undertakings for the year 1934.

TABLE No. 1.

Power Station Statistics.

Power Station	Units Generated.	Maximum Half-hourly Demand. Kilowatts (Sent Out).	Load Factor on Units Sent Out. %
Colenso ...	140,414,690	30,580	49.2
Witbank ...	690,259,413	95,686	77.4
Salt River ...	192,344,729	38,580	54.3
Congella ...	140,693,240	34,733	43.1
Sabie ...	7,680,400	1,200	72.2

Electricity Supply Commission.

STATEMENT No. 1.

Units sold to all consumers during the past nine years.

Year.	Natal Central Undertaking.	Witbank Undertaking.	Capetown Undertaking.	Durban Undertaking.	Sabie Undertaking.	Total.
1926 ...	719,666	160,031,213	280,242	—	727,401	161,758,522
1927 ...	104,206,235	439,061,722	5,811,836	—	1,938,940	551,018,733
1928 ...	114,213,037	464,267,213	31,038,697	15,563,460	2,829,888	627,912,295
1929 ...	123,911,774	543,091,138	47,945,690	78,873,576	3,176,173	796,998,351
1930 ...	117,075,484	618,951,364	49,772,016	99,228,000	4,585,060	889,611,924
1931 ...	101,131,880	603,359,113	52,109,958	103,899,765	6,585,553	867,086,269
1932 ...	100,292,933	610,285,123	64,268,873	109,808,223	6,080,010	890,735,162
1933 ...	109,186,538	639,368,114	100,685,629	118,538,312	6,349,651	974,128,244
1934 ...	124,898,129	648,245,530	73,583,974	131,104,182	7,329,679	985,161,494

STATEMENT No. 2.

The distribution of the units sold during 1934 as between the various classes of consumers.

Undertaking.	Traction.	Bulk.	Industrial and Mining.	Domestic and Lighting.	Total.
Natal Central ...	101,824,630	18,628,836	3,826,523	618,140	124,898,129
Witbank ...	—	591,477,458	55,934,654	833,418	648,245,530
Capetown ...	44,560,818	8,661,702	18,810,321	1,551,133	73,583,974
Durban ...	—	131,104,182	—	—	131,104,182
Sabie ...	—	—	7,329,679	—	7,329,679
Totals ...	146,385,448	749,872,178	85,901,177	3,002,691	985,161,494

STATEMENT No. 3.

Statistics relating to the Commission's Undertakings for the year 1934.

TABLE No. 1.

Power Station Statistics.

Power Station	Units Generated.	Maximum Half-hourly Demand. Kilowatts (Sent Out).	Load Factor on Units Sent Out. %
Colenso ...	140,414,690	30,580	49.2
Witbank ...	690,259,413	95,686	77.4
Salt River ...	192,344,729	38,580	54.3
Congella ...	140,693,240	34,733	43.1
Sabie ...	7,680,400	1,200	72.2

TABLE No. 2.

Particulars of coal used at the Commission's Steam-raising Power Stations.

Power Station.	COAL CONSUMED.			B.T.U.'s.		Thermal Efficiency on Units Sent Out.
	Tons. (2,000 lbs.)	Per Unit Generated. Lbs.	Per Unit Sent Out. Lbs.	Average per lb. of Coal.	Average per Unit Sent Out.	
Colenso	104,006	1.48	1.58	12,440	19,600	17.4%
Witbank	615,907	1.79	1.90	11,040	20,980	16.3%
Salt River	125,041	1.30	1.37	13,200	18,100	18.9%
Congella	93,717	1.33	1.43	12,570	17,980	19.0%
		Average Cost per Ton (2,000 lbs.).				
	1934.	1933.	1932.	1931.	1930.	
Colenso	10/9	10/7	9/10	8/3	8/-	
Witbank	2/3	2/4	2/ 4	2/2	2/2	
Salt River	25/6	25/4	24/11	23/4	23/5	
Congella	15/4	15/6	15/ 4	14/2	13/2	

TABLE No. 3.

Particulars of Staff employed.

The staff employed by the Commission as at 31st December, 1934, as compared with the previous year was as follows:—

	1934.	1933.	Difference.
Europeans	422	405	+17
Non-Europeans	284	273	+11
Totals	706	678	+28

TABLE No. 2.

Particulars of coal used at the Commission's Steam-raising Power Stations.

Power Station.	COAL CONSUMED.			B.T.U.'s.		Thermal Efficiency on Units Sent Out.
	Tons. (2,000 lbs.)	Per Unit Generated. Lbs.	Per Unit Sent Out. Lbs.	Average per lb. of Coal.	Average per Unit Sent Out.	
Colenso	104,006	1.48	1.58	12,440	19,600	17.4%
Witbank	615,907	1.79	1.90	11,040	20,980	16.3%
Salt River	125,041	1.30	1.37	13,200	18,100	18.9%
Congella	93,717	1.33	1.43	12,570	17,980	19.0%

	Average Cost per Ton (2,000 lbs.).				
	1934.	1933.	1932.	1931.	1930.
Colenso	10/9	10/7	9/10	8/3	8/-
Witbank	2/3	2/4	2/4	2/2	2/2
Salt River	25/6	25/4	24/11	23/4	23/5
Congella	15/4	15/6	15/4	14/2	13/2

TABLE No. 3.

Particulars of Staff employed.

The staff employed by the Commission as at 31st December, 1934, as compared with the previous year was as follows:—

	1934.	1933.	Difference.
Europeans	422	405	+17
Non-Europeans	284	273	+11
Totals	706	678	+28