

Ed. Curran

Electricity Supply Commission.

THIRTEENTH
ANNUAL REPORT

of the

Electricity Supply Commission

for the

Year ended 31st December, 1935

with a

BRIEF REVIEW OF ITS ACTIVITIES

up to

31st May, 1936.

MEMBERS OF THE
Electricity Supply Commission.

DR. HENDRIK JOHANNES VAN DER BIJL (Chairman).

ALBERT MICHAEL JACOBS.

ROBERT BURNS WATERSTON.

WILLIAM PLOWMAN MOYESE HENDERSON.



**ESCOM HOUSE,
JOHANNESBURG.**

Electricity Supply Commission.

Electricity House,
82, Marshall Street,

Johannesburg,

June, 1936.

To the Honourable,
The Minister of Commerce and Industries,
Pretoria.

SIR,

In conformity with the provisions of Section 14 of the Electricity Act No. 42 of 1922, the Commission has pleasure in submitting its Thirteenth Annual Report covering its operations for the year ended 31st December, 1935, together with a brief review of its activities up to 31st May, 1936.

Following the death of Mr. Karl Gundelfinger, Mr. William Plowman Moyese Henderson was appointed a member of the Commission for a period of three years, commencing from 1st June, 1935.

OUTPUT.

The year 1935 was marked by great activity in the demand for electricity. The number of units sold by the Commission was 1,119,242,946—an increase of approximately 13·6 per cent. over the previous year, thus exceeding the 1,000 million mark for the first time in the history of the Commission.

The following table shows the comparison between the sales of electricity for the years 1934 and 1935 to the various classes of consumers:—

Class of Supply.	1934.	1935.	Percentage Increase or Decrease.
Industrial and Mining ...	85,901,177	82,969,019	- 3·41
Bulk	749,872,178	857,711,009	+ 14·38
Traction	146,385,448	174,261,280	+ 19·04
Domestic and Lighting ...	3,002,691	4,301,638	+ 43·26
	<u>985,161,494</u>	<u>1,119,242,946</u>	+ 13·61

INDUSTRIAL AND MINING.

The sales of electricity for industrial and mining purposes show a small decrease; this was due to a large consumer of the Witbank Undertaking reverting to normal use during 1935, whereas in 1934 this consumer for a portion of the year temporarily increased his normal requirements.

Excluding the Witbank Undertaking an increase of 8·39 per cent. was recorded in the sales of electricity to industrial and mining consumers supplied from the Commission's other Undertakings.

It should be mentioned, however, that the units supplied to The Victoria Falls and Transvaal Power Company, Limited (whose business is largely concerned with the supply of power to the mining industry) are not included under "Industrial and Mining," but under "Bulk Supply."

TRACTION.

The large increase in the use of electricity for traction purposes is accounted for by the commencement of operation early in the year of the electrified railway from Daimana in Natal to Harrismith in the Orange Free State, and by the general increase in the volume of traffic over all the electrified sections.

DOMESTIC AND LIGHTING.

A large number of new users of electricity for lighting and domestic purposes has been secured and sales to existing consumers have shown a substantial increase. While the number of units supplied to this class represents a small proportion of the total, owing to the sparsely populated areas supplied directly by the Commission, the development attained has been remarkable. The average use per consumer of the Commission for lighting and domestic purposes was 1,030 units per annum.

FINANCIAL.

As will be seen from the Balance Sheet at 31st December, 1935, attached to this report, the financial position of the Commission is very sound. During the year the Loan Capital was increased by £1,310,310, making the total Loan Capital £12,250,000, the total assets of the Commission were £14,694,462 and liabilities £12,769,855, the excess of assets over liabilities being £1,924,607.

Reference is made in the Report of the Auditors to the procedure followed by the Commission in making provision for the redemption of its loans and to the fact that the amount in the Redemption Fund is in excess of statutory requirements. The policy adopted by the Commission in making provision out of Revenue for the redemption of its loans over somewhat shorter periods than those of the loans is both conservative and prudent. In terms of the Electricity Act, the Commission is required to contribute annually out of revenue to a Fund which, if accumulated on a sinking fund basis with interest at the rate of three and one-half per centum compounded annually, will redeem the whole outstanding securities at the expiration of thirty years from the issue thereof, or at the expiration of any period being less than thirty years which may have been prescribed for the redemption of such securities.

A factor which has contributed to the amount in the Redemption Fund being in excess of statutory requirements is that Redemption Fund moneys have been invested by the Commission at a higher average yield than $3\frac{1}{2}$ per cent. The Commission has in the past been fortunate in finding suitable investments for Redemption Fund moneys returning a higher average yield than $3\frac{1}{2}$ per cent., and in this connection has from time to time judiciously used money in the General Fund not immediately required to secure investments for the Redemption Fund in respect of future contributions to the Fund.

The Redemption Fund at 31st December, 1935, amounted to £831,383.

It is the policy of the Commission to maintain its plant in first-class working condition out of Revenue and to build up a Reserve Fund from Revenue, which may, in terms of the Act, be used for obsolescence, betterment, exceptional repairs or emergencies. This Fund has been, and is still being, built up in respect of all the Commission's Undertakings and amounted as at 31st December, 1935, to £786,220.

As a result of these policies, the financial strength of the Commission has grown from year to year.

The total production costs for the year ended 31st December, 1935, including interest on, and provision for redemption of Loans and contributions to Reserve Fund, were £1,353,402 which includes the portion of the costs of operating the Salt River Power Station of the Commission borne by the Capetown Corporation. The net cost after deducting the portion of the cost borne by the Capetown Corporation was £1,218,802 and the Revenue, £1,250,542, showing a surplus of Revenue over Expenditure of £31,740. In terms of Section 10 of the Electricity Act No. 42 of 1922, the Commission is required as far as practicable to carry on its Undertakings neither at a profit nor at a loss, and although by virtue of the magnitude of its operations this is difficult to achieve in practice, it is noteworthy that, with the exception of one Undertaking, which operated at cost, the remaining five Undertakings were carried on at a relatively small profit.

The average cost per unit sold during 1935 was 0·261d.—a reduction of approximately $8\frac{1}{2}$ per cent. on the previous year. The revenue per unit sold also decreased from 0·286d. per unit in 1934 to 0·266d. per unit in 1935, a decrease of approximately 7 per cent. due to the reduction in charges and to the incidence of the tariffs of supply which are framed so as to secure to the consumer a reduction in the average price as his load factor improves and/or his consumption of electricity increases.

The following is a brief review of the activities of the various Undertakings.

NATAL CENTRAL UNDERTAKING.

Apart from the installation of strainers for the water screening plant, there has been no construction work of a major character at the Colenso Power Station during the year, the generating plant consisting of five 12,000/20,000 kilowatt turbo alternators and ten boilers each with an output of 60,000/75,000 lbs. of steam per hour, being sufficient to meet the demands for supply, including the extensions in hand to the transmission and distribution systems.

An application was made in December, 1934, to the Electricity Control Board for an amendment of the Licence of the Natal Central Undertaking which included, *inter alia*, an extension of

the area of supply. The City Council of Durban lodged an objection to the application, on the grounds that it would authorise the supply of electricity from the Colenso Power Station to consumers, including the South African Railways and Harbours for the extension of railway electrification to Durban, within a large portion of the area granted to the Commission in respect of its Durban Undertaking, from which the City Council receives practically all its supplies. The application was heard by the Electricity Control Board in January and March, 1936, the hearing being adjourned to enable schemes of supply to be investigated with a view to reaching a settlement satisfactory to all parties concerned. The Commission is hopeful that this will be achieved.

WITBANK UNDERTAKING.

No extensions of a major character were undertaken during the year at the Witbank Power Station but the transmission and distribution systems of the Commission were extended to supply new consumers.

Arrangements are being made to supply the South African Railways and Harbours Administration for the electrification of the railway system along the Witwatersrand and between Germiston and Pretoria. The Commission will supply the electricity required for traction purposes and provide the necessary sub-station plant for converting the supply of electricity from alternating to direct current.

CAPETOWN UNDERTAKING.

The third 20,000 kilowatt turbo generator set in the Salt River Power Station was completed and brought into commission during the year, and the installation commenced of two 100,000 lbs./hour boilers in place of two of the four small boilers. On account of the growth of the demand for electricity at the Cape, the question of the provision of further generating plant was investigated in terms of the Agreement between the Commission and the Capetown Corporation, which provides for co-operation between the parties in the generation of electricity at Capetown. The decision arrived at was that in order to meet future requirements a new power station of an ultimate capacity of 200,000 kilowatts should be erected by the Capetown Corporation adjacent to the present Dock Road Station. At the date of this Report the construction of the civil engineering works in connection with the power station is

proceeding with all speed and the plant and equipment consisting of two 40,000/50,000 kilowatt turbo alternators and five boilers together with the necessary ancillary plant has been ordered.

The liability of the South African Railways and Harbours Administration for the capital charge made by the Commission in respect of certain redundant plant and equipment arising out of the closing down of the Sea Point Line in 1929 has been the subject of negotiation during the year. Since 1929, the Administration has paid the charge referred to but has now repudiated liability and at the date of this report the matter is still under negotiation.

DURBAN UNDERTAKING.

The installation of a hot water storage plant to increase the output of steam from the existing boiler plant has almost been completed at the date of this report. The plant is of special interest and is referred to in another section of this report.

During the year the Commission took over the supply of electricity in the Townships of Umkomaas and Scottburgh. The supply was given from the existing generating plants in the towns until the necessary transmission system was constructed to link up the two townships with the Congella Power Station.

The Commission takes the opportunity of acknowledging the valuable assistance received from the Council of the City of Durban and the South African Railways and Harbours Administration in the provision of the supply of electricity from the Durban Undertaking to these townships.

SABIE UNDERTAKING.

The output from the Hydro-Electric Power Station from which the Undertaking receives its supply is limited by the available water. The Station, which was designed for an output of 900 kilowatts has not been extended since the commencement of operation although an output of approximately 20 per cent. in excess of its designed capacity has been successfully achieved.

KLIP GENERATING STATION UNDERTAKING.

Satisfactory progress has been made with the construction, commenced in July, 1934, of the Klip Generating Station which

is being erected to meet the rapidly increasing demand for power from the mining and other industries along the Witwatersrand. The demand for electricity from the mining industry during the year was phenomenal and to supply requirements, plant is being rapidly assembled and brought into service immediately after erection. Three turbo alternator sets with a total capacity of 73,000 kilowatts have already been commissioned, the output of the Station being delivered to the system of The Victoria Falls and Transvaal Power Company, Limited, for distribution to its consumers. In the construction of the Station the Commission and the Falls Company are acting in collaboration, the initial installation of plant consisting of six 33,000 kilowatt, two 7,000 kilowatt turbo alternators and twelve boilers, each with a normal steaming capacity of 180,000 lbs. per hour. The Station is capable of extension to a final installed capacity of 350,000 kilowatts.

RAND EXTENSION UNDERTAKING.

During the year, a supply of electricity in the area of this Undertaking was commenced by The Victoria Falls and Transvaal Power Company, Limited, to whom the licence granted to the Commission was ceded, and at the end of 1935 approximately 120 miles of transmission line and 17 sub-stations had been constructed. The area of the Undertaking is about 11,200 square miles in extent, being approximately rectangular with a length of 140 miles stretching from Delmas in the east to Klerksdorp in the west. The transmission system already erected to serve existing consumers has been designed to meet potential requirements in a large portion of the area.

HEAD OFFICE ACCOMMODATION.

Since its inception, the Commission's Head Office staff has been accommodated in leased premises which, on account of the extension of its business, have proved wholly inadequate. The Commission, therefore, decided to erect its own premises on a site bounded by Marshall, Main and Rissik Streets, Johannesburg, and not far from the existing offices. A modern building, which will provide a permanent home for the Commission and known as "Escom House," is being erected on the site, and any accommodation not required in the immediate future will be leased to suitable tenants. The building will represent approximately 2 per cent. of the present assets of the Commission. A print taken from the Architect's drawing of the building is attached to this report.

The individual Undertakings are dealt with in greater detail in another section of this report. A full list of the Annexures to this report will be found on pages 33 and 34.

The Commissioners take this opportunity of recording their thanks to The Victoria Falls and Transvaal Power Company, Limited, the Capetown City Council and the South African Railways and Harbours Administration for the co-operative assistance given in their respective spheres in the interests of electricity supply in South Africa, and to officials and employees of the Commission for their loyal and unremitting efforts during the year.

By Order of the Commission,

I have the honour to be,

Sir,

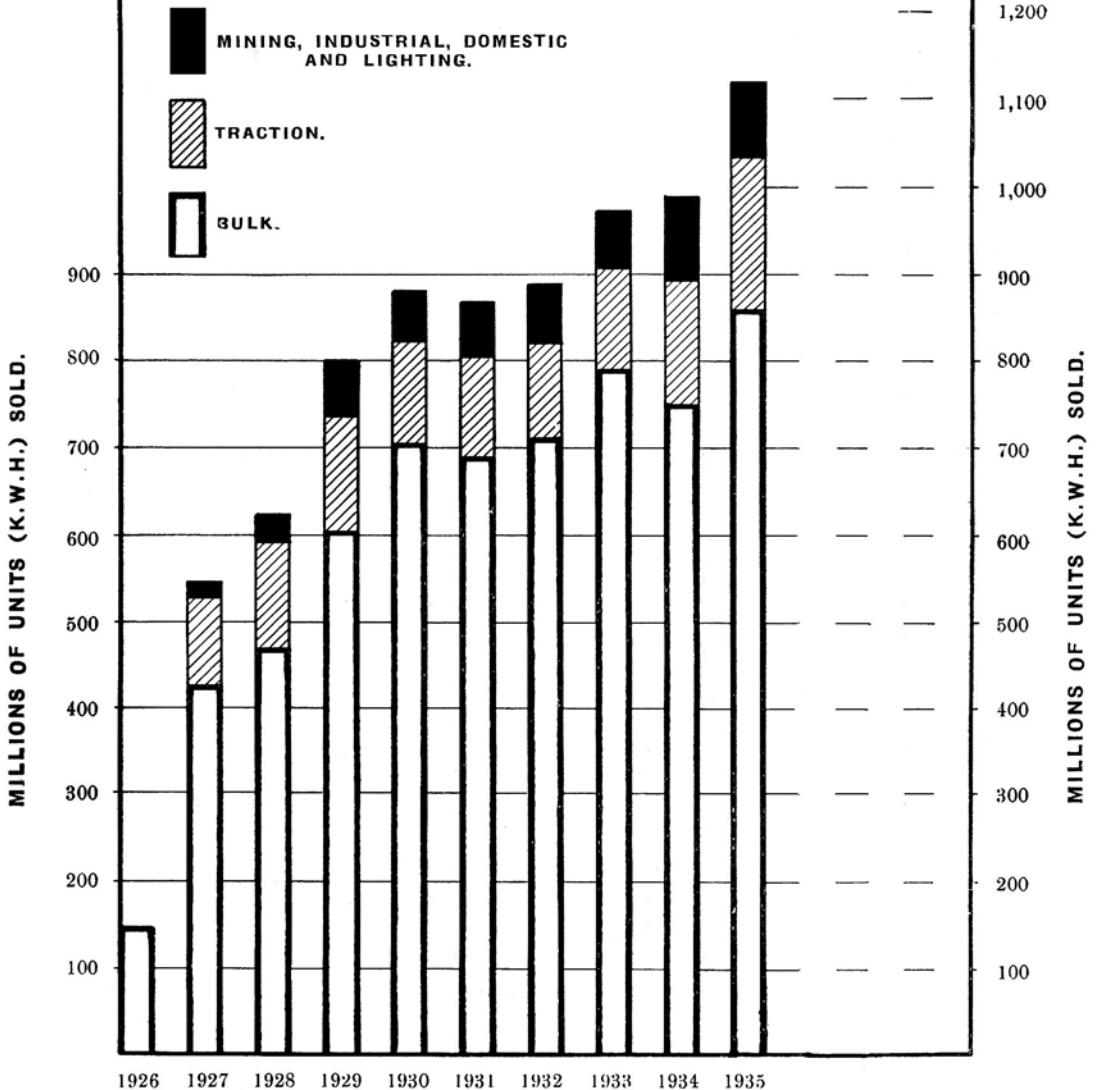
Your obedient servant,

A handwritten signature in cursive script, reading "J. G. van der Byl". The signature is written in dark ink and is positioned above a horizontal line.

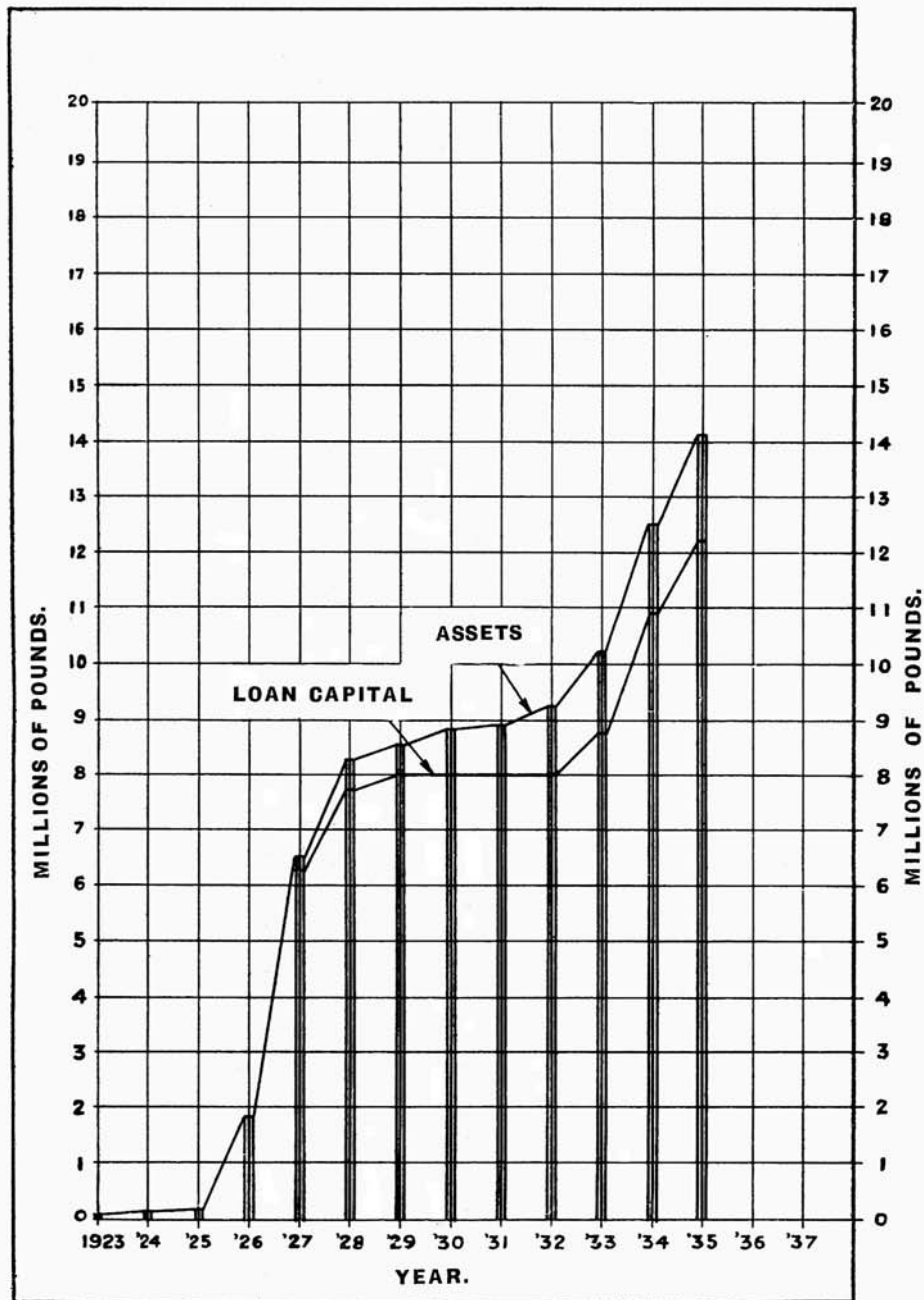
CHAIRMAN.

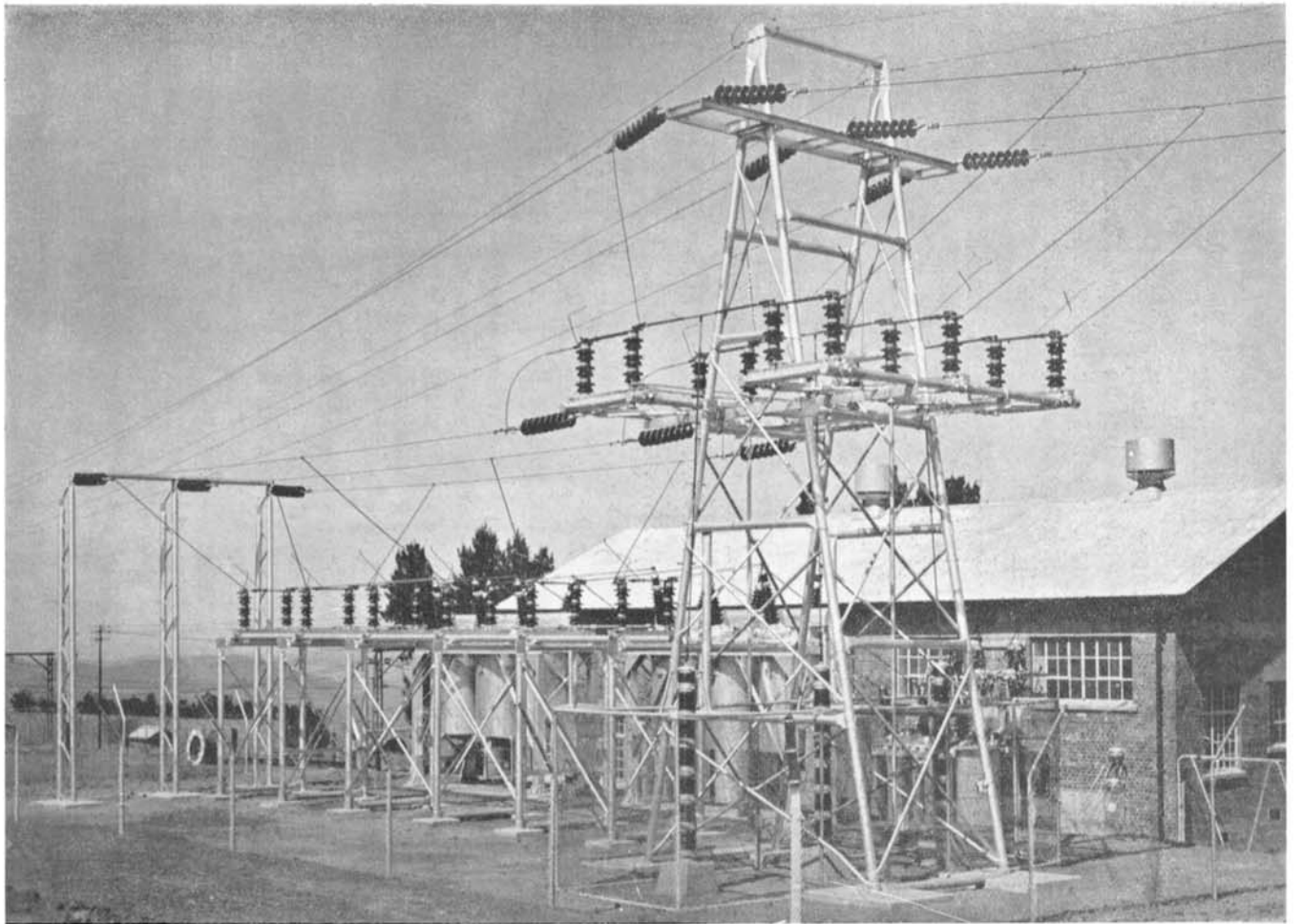
Electricity Supply Commission.

DIAGRAM SHOWING TOTAL ELECTRICITY SALES.



ASSETS AND LOAN CAPITAL.





**Colworth Mercury Arc Rectifier Sub-station,
Daimana-Harrismith Railway Electrification.**

NATAL CENTRAL UNDERTAKING.

A record output for the Undertaking was established during 1935, the number of units sold totalling 154,278,600 or approximately 30 million units more than the previous year. The net capital expenditure on the undertaking as at 31st December, 1935, was £3,621,632, the revenue for the year being £384,480 and the working costs £378,916, the cost per unit sold being reduced from 0·691d. in 1934 to 0·589d. in 1935.

Charges for electricity were reduced in 1935 and reductions have also been introduced during 1936.

A further large increase in the output of the Undertaking is anticipated for the year 1936.

POWER STATION.

The principal figures of interest in connection with the operation of the Power Station are shown in the following table:—

Units generated	171,704,260
Units sent out	161,835,353
Maximum demand: half-hour (sent out)		33,400 kilowatts
Load Factor	55·3%
Thermal Efficiency on units sent out		17·6%

The predominating load on the Power Station is that of the South African Railways and Harbours Administration for traction purposes. The load at the Station varies from 10,000 kilowatts to 45,000 kilowatts within a few minutes and calls for exceptional vigilance on the part of the operating staff.

Since the commencement of operation of the Power Station, difficulty has been experienced during times of flood by the fouling of condensers and oil cooler strainers with fine debris and silt brought down by the river necessitating the frequent changing over of turbine plant at very short intervals. The installation of rotary strainers between the screening plant and the circulating water pumps has not only proved successful in overcoming the difficulty, but has also been a contributory factor in the achievement of the high thermal efficiency which is a record for this Station.

Apart from the installation of the strainers no other work of a major character was carried out during the year at the Station.

The Commission has continued to employ white labour for certain work previously undertaken by native employees at the Station and this policy has met with considerable success.

The 88,000 volt transmission system was extended during the year from Pietermaritzburg to Cato Ridge and the supply to the Thornybush sub-station changed over from 33,000 volts to 88,000 volts. The 33,000 volt line from Pietermaritzburg to Thornybush sub-station, erected in 1931/32 for the electrification of the railway between these points, has been recovered.

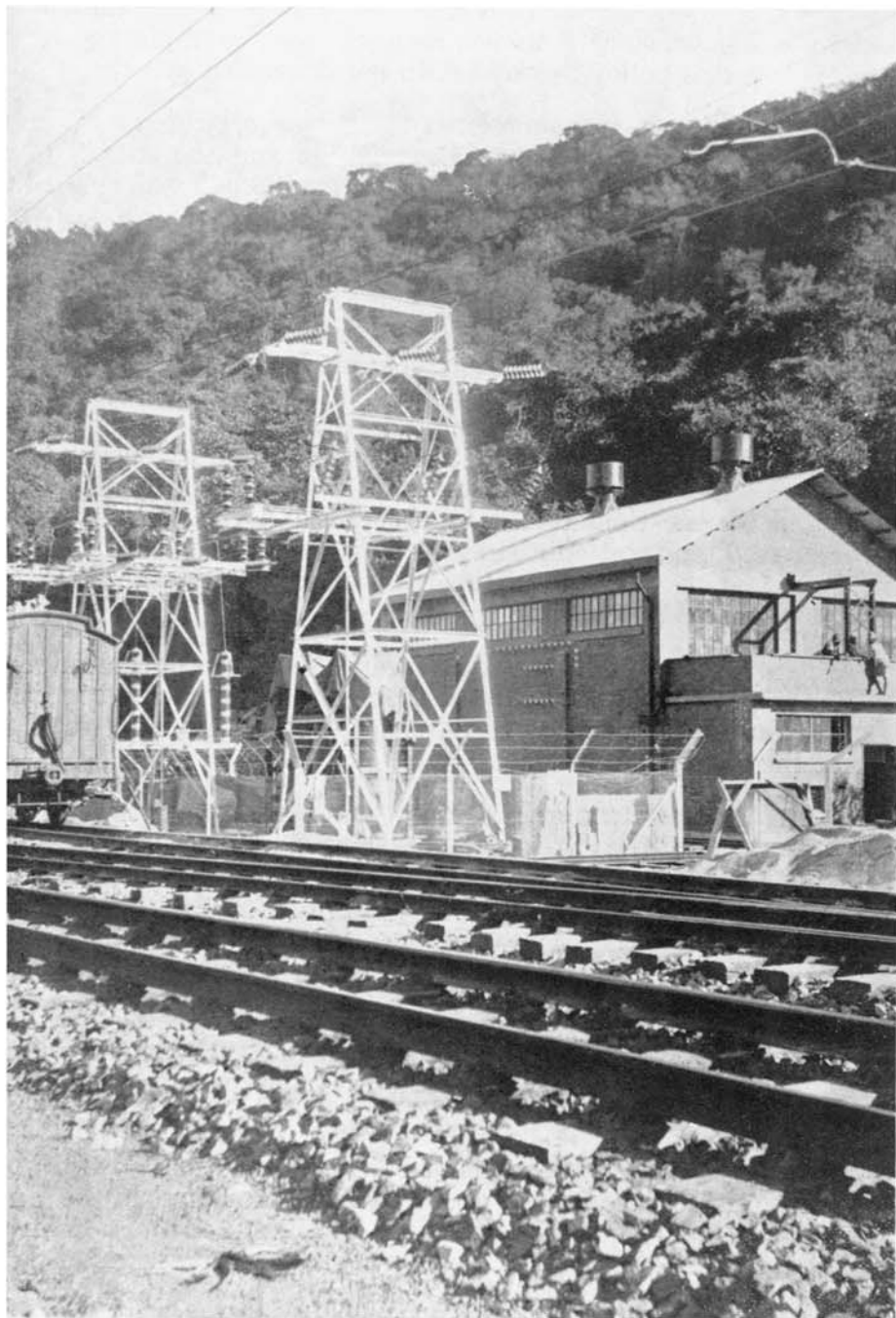
A feature of interest in connection with the supply of electricity for the extension of railway electrification is the use of single three wire 88,000 volt transmission lines, the original scheme between Glencoe and Pietermaritzburg being served by duplicate 88,000 volt lines on separate structures. In the case of the extension to the 88,000 volt system the transmission line structures have been fabricated for the Commission by the South African Railways and Harbours Administration almost entirely from discarded rails. The line is run along the side of the railway track and the structures also carry the trolley wire.

The single line already erected and in service between Daimana and Harrismith, has been subjected to extreme climatic conditions without any interruption to supply except for a few minutes' duration at infrequent intervals.

A further mercury arc rectifier sub-station for the traction requirements on the Daimana-Harrismith line was erected at Harrismith, bringing the total number of rectifier sub-stations on this section to three. The sub-stations are unattended and equipped for inverted operation; the operation of these sub-stations, after certain initial troubles had been overcome, has been satisfactory.

The erection of eleven rectifier sub-stations in connection with the extension of electrification from Cato Ridge to Durban (approximately 45 miles) and from Glencoe to Volksrust (approximately 77 miles) is in hand.

The system has been extended to supply the Township of Richmond, the Municipalities of Dundee and Harrismith, the Union Glass Company Limited, Talana and a farming community in the neighbourhood of Merrivale. Extensions to other farming areas are contemplated.



**Delville Wood Mercury Arc Rectifier Sub-station,
Cato Ridge-Durban Railway Electrification.**

WITBANK UNDERTAKING.

The output of the Undertaking increased by approximately 80 million units over the previous year, the total units sold for 1935 being 727,888,529. The net capital expenditure on the Undertaking as at 31st December, 1935, was £2,176,589, the revenue for the year being £346,850 and the working costs £340,117, with an average cost per unit sold of ·112d.

The Power Station is operated as a base load station and during the year the load factor, on an hourly maximum demand, was approximately 80 per cent., the plant load factor being 92·4 per cent. The installation of four additional boilers (equipped with grit extractors) commenced in 1934 was completed in April, 1935, making possible an increase in output from the Power Station.

During the year grit extractors were installed on two of the original boilers and as a result of the experience gained, extractors will be fitted to the remaining boilers.

The plant is operated by The Victoria Falls and Transvaal Power Company, Limited, on behalf of the Commission, and the bulk of the output is taken by that Company. The balance is supplied to Collieries and Industries, the Municipality of Middelburg, and to lighting and domestic users within the Municipality of Witbank and district, the total number of consumers of all classes supplied being 593.

Contracts have been completed for the supply to three additional collieries, one of which is an entirely new development. When these supplies are commenced, all producing collieries in the Witbank district will have become consumers of the Commission.

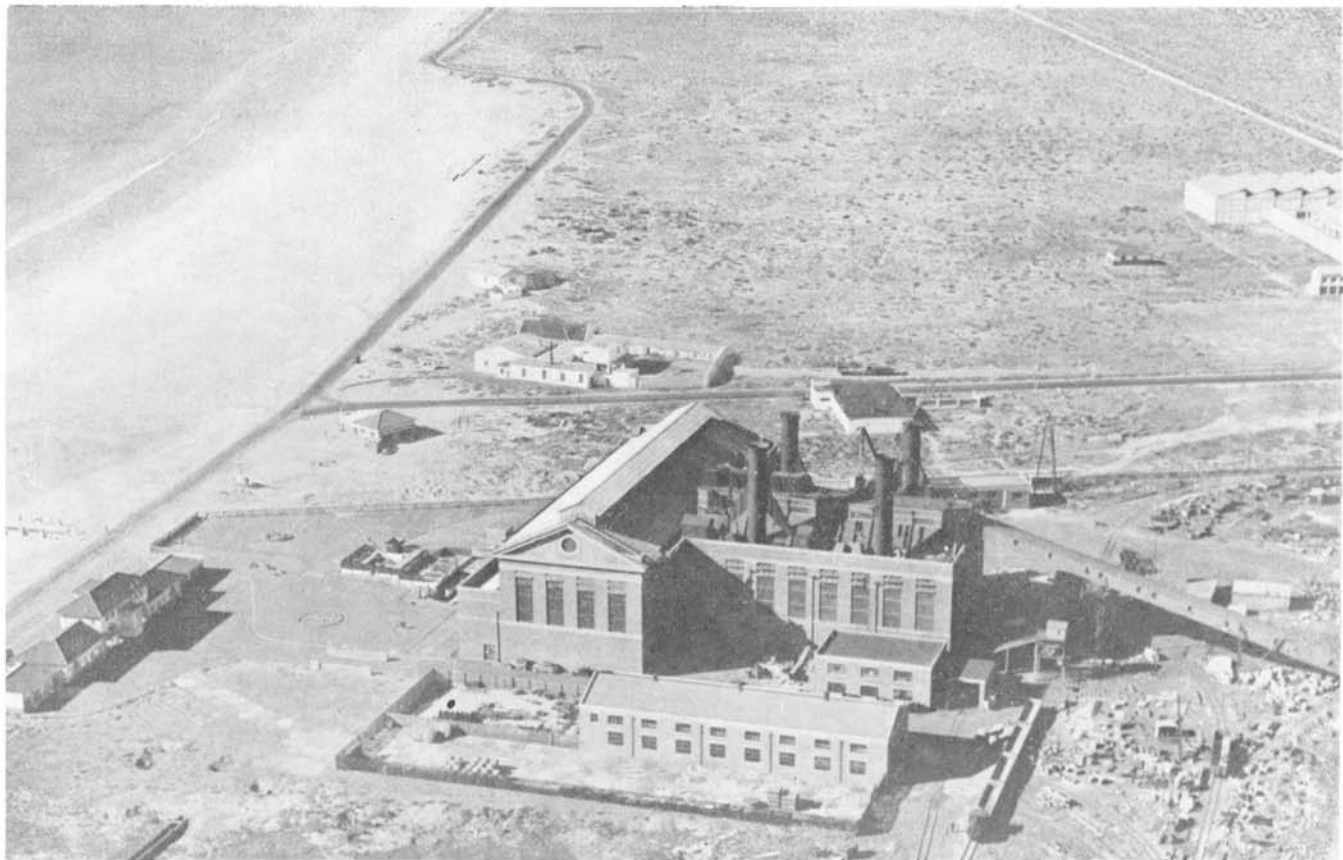
The charges for electricity in respect of the Undertaking are amongst the lowest in the world. This factor, together with the availability of cheap land, a good supply of water, and excellent railway and road communications makes Witbank an attractive centre for the establishment of industries.

Work in connection with the supply of electricity to the South African Railways and Harbours Administration for the electrification of the railway system along the Witwatersrand and from Germiston to Pretoria was commenced during the year.

Twelve sub-stations, equipped with mercury arc rectifiers, are being constructed to supply the direct current required for traction purposes.

The interconnected system of supply along the Witwatersrand passes in close proximity to all sub-stations with the exception of one, consequently a relatively small expenditure is being incurred on transmitting the supply, the arrangements in this connection being simplified by the co-operation which exists between The Victoria Falls and Transvaal Power Company, Limited, and the Commission.

The structures required to carry the contact wires are already being erected along the track by the Railway Administration, and it is expected to commence electrical operation of the railway service early in 1937.



Salt River Power Station, Capetown.

CAPETOWN UNDERTAKING.

An increase of 8·75 per cent. in the sales of electricity from the Capetown Undertaking is recorded over the previous year, the sales during 1935 totalling 80,020,511 units.

The following table shows the distribution as between the various classes of consumers:—

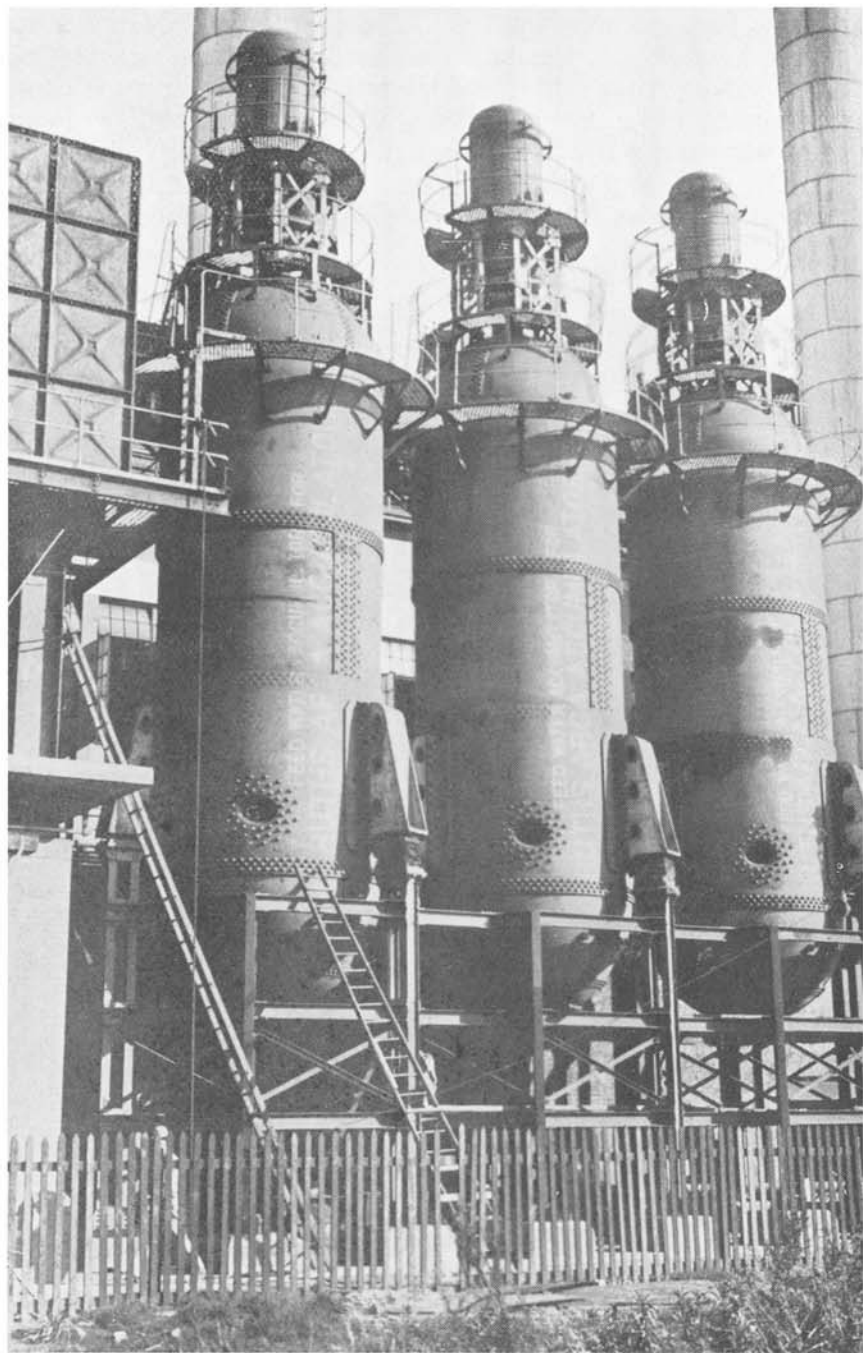
Bulk	9,504,850
Industrial	20,785,533
Domestic	2,331,941
Street Lighting	97,254
Traction	47,300,933
						<hr/>
Total	80,020,511
						<hr/> <hr/>

The net capital expenditure at 31st December, 1935, was £2,202,305, the revenue being £276,491 and the cost £261,680, the surplus being carried forward and the charges for electricity reduced. The figure of £261,680 excludes the portion of the expenditure incurred by the Commission and borne by the Capetown Corporation in respect of the Salt River Station of the Commission, which by agreement is operated with the Dock Road Power Station as a single producing unit and the costs pooled. (A statement of the pooled costs forms an annexure to this Report.)

This agreement between the Commission and the Corporation has proved entirely satisfactory and the healthy spirit of co-operation which exists between the parties has in no small measure been responsible for the success of the arrangement. The cost per unit sold in respect of the Undertaking shows an appreciable reduction on the previous year due to a lower average cost of production from the Pooled Stations and the increase in the sales of electricity referred to in the first paragraph.

A large portion of the area of supply of this Undertaking is populated by a farming community and the Commission has endeavoured to develop the use of electricity for farming and incidental purposes, by extending its distribution system wherever economically practicable. During 1935 there were one hundred

and fifty-six farmers enjoying the amenities of a supply of electricity. The primary object of the bulk of these consumers was to obtain electricity for lighting and domestic purposes and in some cases for water pumping and grape pressing. With the availability of supply, however, increasing use is being made for dairying purposes and it is anticipated that when consumers become familiar with the many advantages, its use will be considerably extended.



**Thermal Storage Plant,
Congella Power Station, Durban.**

DURBAN UNDERTAKING.

The output of the Durban Undertaking was 149,874,024 units, an increase of 14·32 per cent. over the previous year. This is the largest percentage increase during the past five years.

The net capital expenditure as at 31st December, 1935, was £1,088,995, the revenue being £226,872 and the costs £222,745, the average cost per unit sold 0·357d., being the lowest production cost since the Undertaking was brought into commercial service in 1930.

The charges for electricity in 1930 were £5 8s. per annum per kilowatt of the agreed maximum demand plus 0·2d. per unit; these charges have been reduced from time to time and the present charges are £3 8s. per annum per kilowatt of the agreed maximum demand plus 0·175d. per unit.

Apart from the installation of thermal storage plant to which reference is made below, the plant at the power station consisting of six turbo alternators, normal rating 68,000 kilowatts and eight boilers has not been extended during the year; the question of further extensions is, however, being investigated. The maximum half-hourly demand during 1935 was 40,333 kilowatts and the peak load 44,000 kilowatts.

The load on the Congella Station rises rapidly between the hours of 4.30 p.m. and 5.30 p.m., due, principally, to the large demand for lighting and domestic purposes, although the peak is of comparatively short duration.

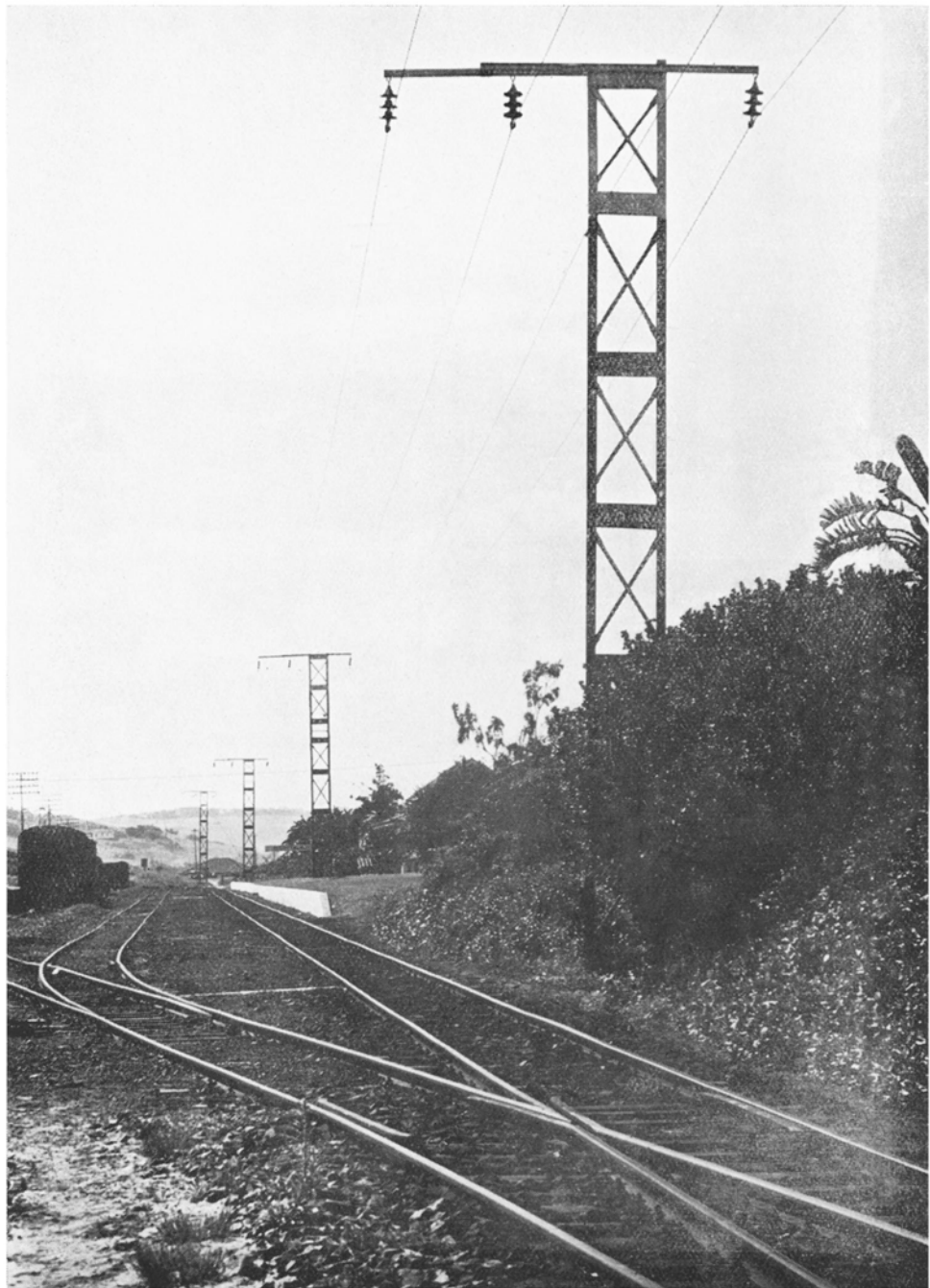
The thermal storage plant consists of a number of cylindrical steel shells in which water is to be stored and heated with steam from the boilers during off-peak periods. The heated water will be supplied to the boilers at times of peak loads, enabling the boilers to steam at a greater output over the peak.

The plant has not yet been fully tried out but preliminary tests indicate that the equipment will fulfil expectations. A photograph of the plant is shown on page 22.

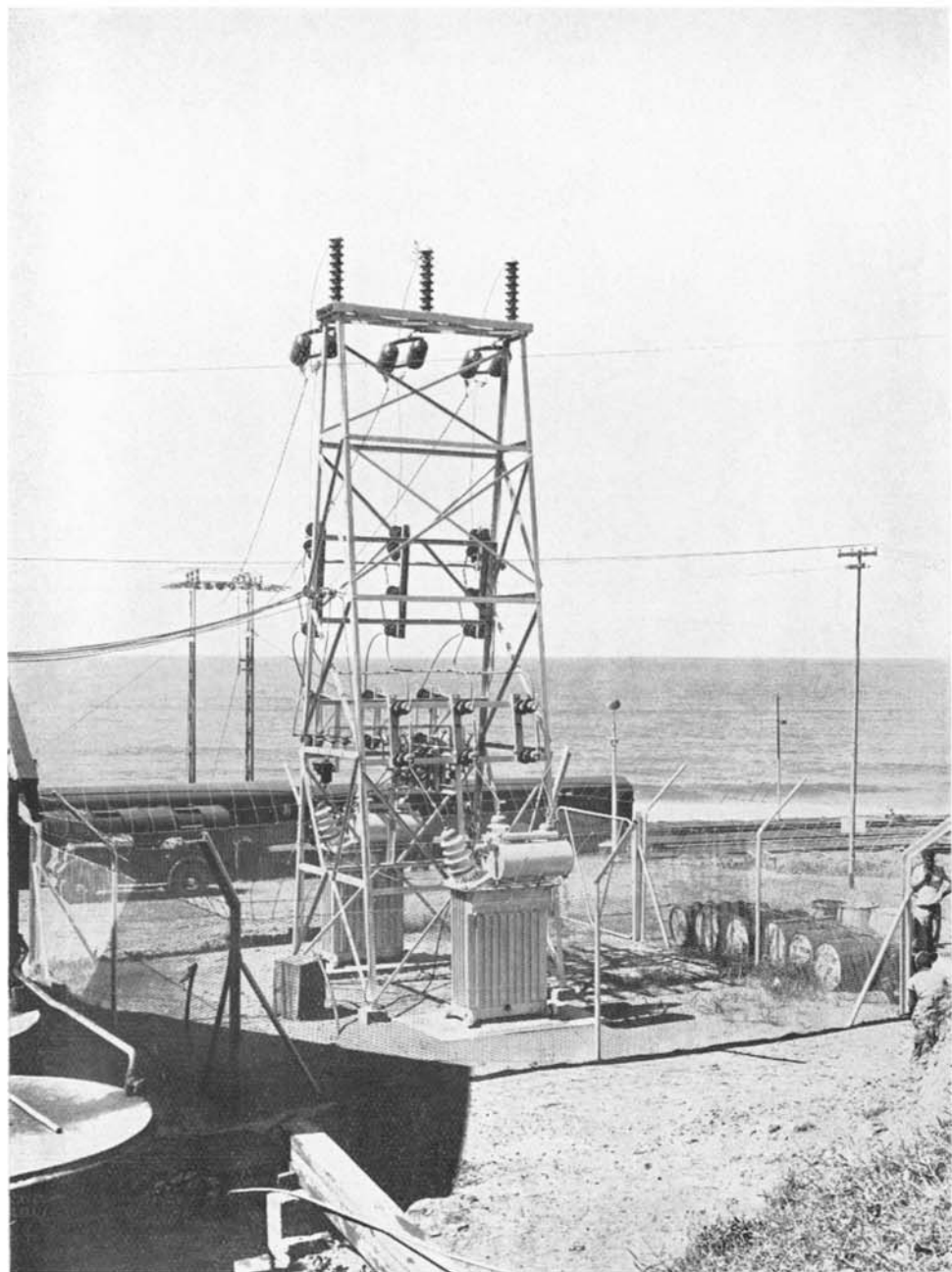
During the year the Undertaking of the Umkomaas Local Board was taken over by the Commission, and also the supply to the township of Scottburgh, these townships being situated on the South Coast of Natal. During 1935 the supply was continued from two

existing small generating stations in the respective townships, but a commencement was made during the year with the construction of a transmission line to link up these two places with the large power station of the Commission at Congella through the transmission system of the Durban Corporation.

The transmission line which was brought into service early in 1935, was constructed for the Commission by the South African Railways and Harbours Administration along the railway track and has been designed to enable contact wires for traction purposes to be attached to the structures, should it be decided at a later date to proceed with railway electrification. A photograph appears on page 25 showing the structures. As the railway follows the Coast certain operating difficulties have been experienced with the line due to smoke from stationary steam locomotives combining with salt deposits on the insulators causing the line to flashover. Ways of overcoming this difficulty are being vigorously prosecuted.



33 kv. South Coast Transmission Line—Durban Undertaking.



Umkomaas Sub-station—Durban Undertaking.

SABIE UNDERTAKING.

This is the smallest Undertaking of the Commission, consisting of a hydro-electric station with an installed plant capacity of 1,350 kilowatts, on the Sabie River, approximately nine miles from the township of Sabie and a transmission line connecting the power station with a central sub-station in the township.

The output of the undertaking is taken by two consumers, Messrs. Glynn's Lydenburg, Limited, and The Transvaal Gold Mining Estates, Limited.

The net capital expenditure as at 31st December, 1935, was £96,145, which was the same for 1934.

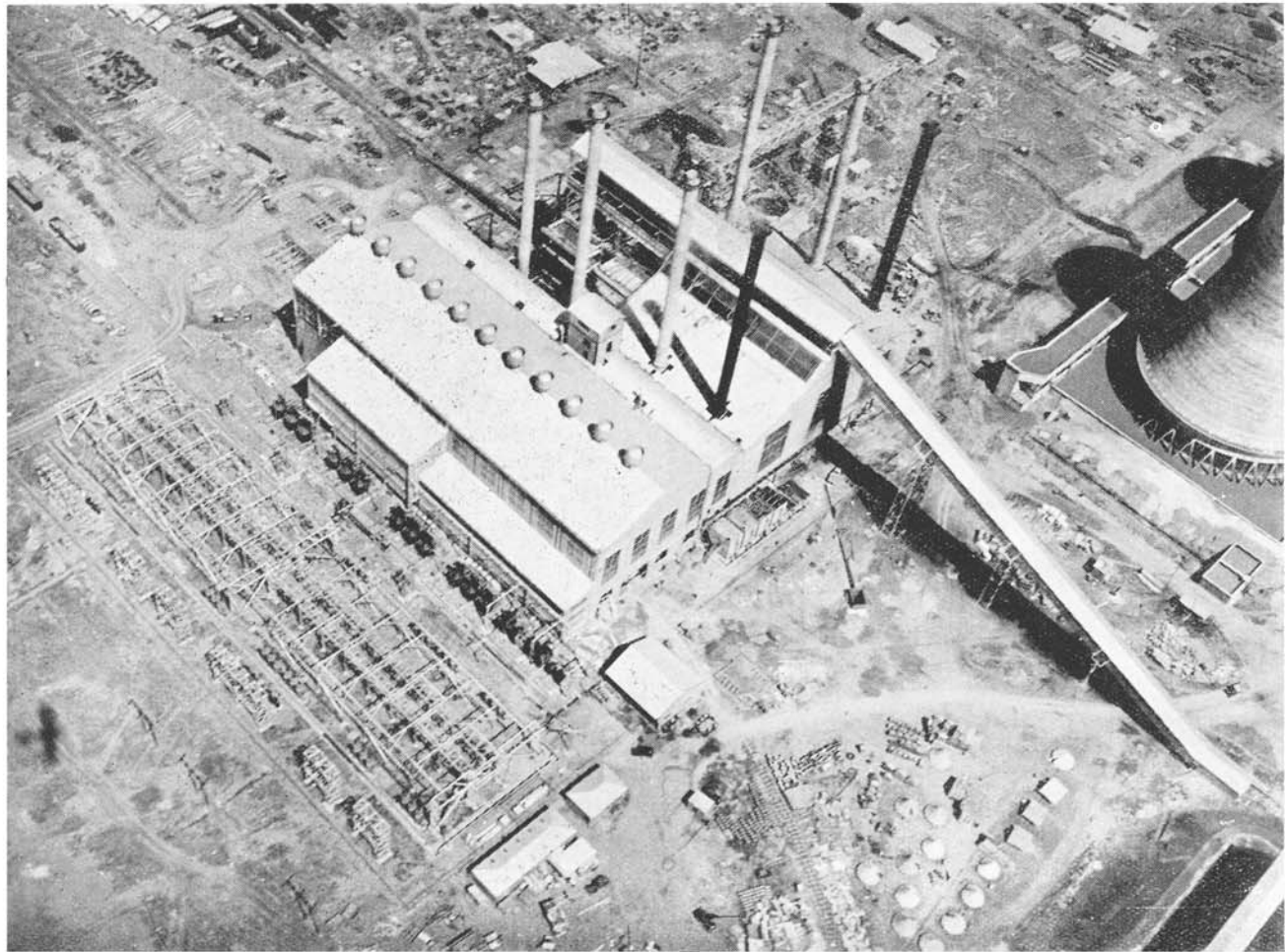
The station is operated to produce the maximum number of units, the cost being 434d. per unit sold.

KLIP GENERATING STATION UNDERTAKING.

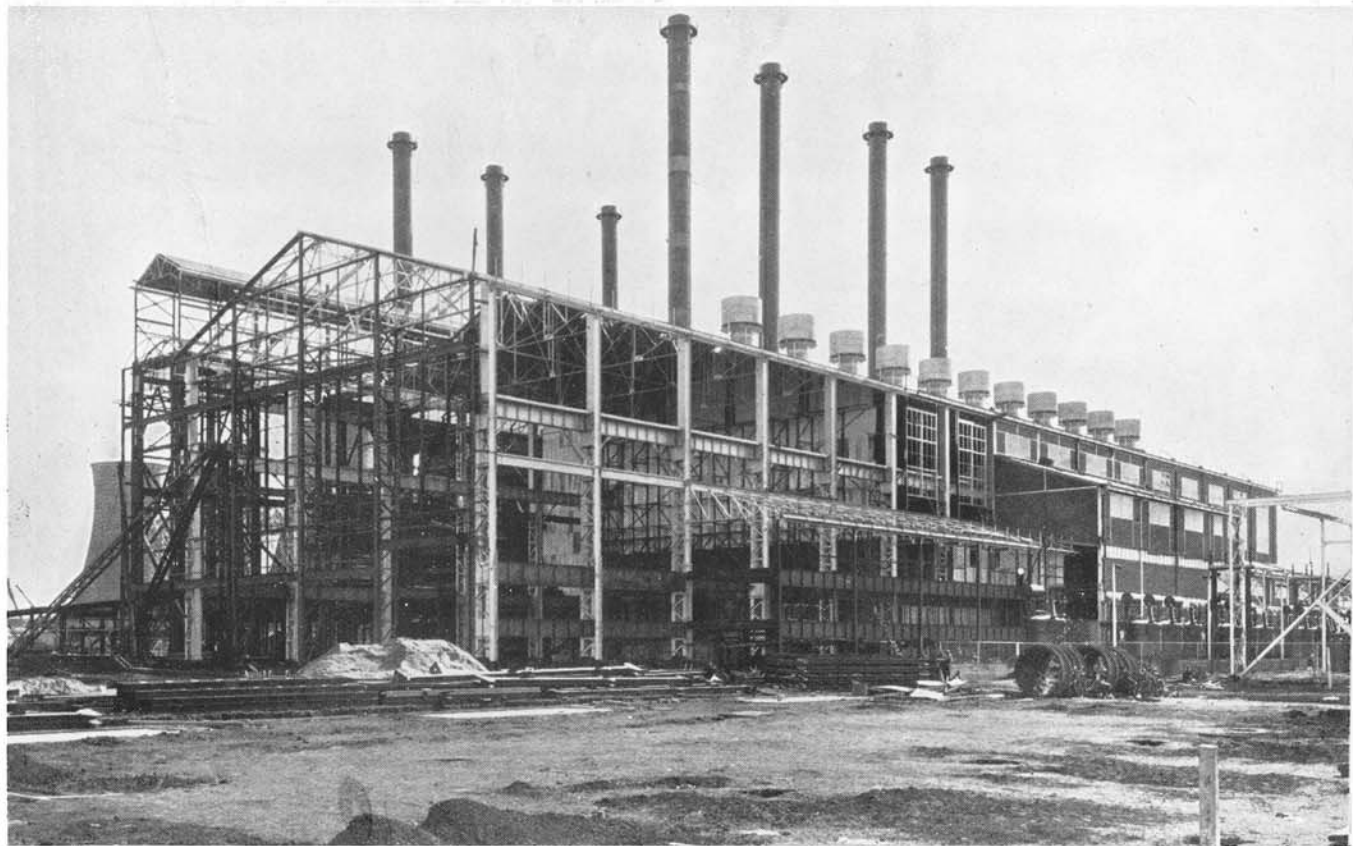
The station is in course of construction, the capital expenditure at the 31st December, 1935, being £1,752,628. A portion of the plant however, was brought into commercial service early in 1936 and it is anticipated that the initial installation of plant, consisting of six 33,000 kilowatt turbo alternators, two 7,000 kilowatt turbo alternators and twelve boilers, will be completed early in 1937. Some indication of the magnitude of the station will be obtained from the photographs on pages 29 and 30.

The fuel required for the operation of the generating station is being obtained from an adjacent colliery and after passing through screening and crushing plant is delivered to the station bunkers by means of conveyors, the coal being handled mechanically throughout from the workings underground.

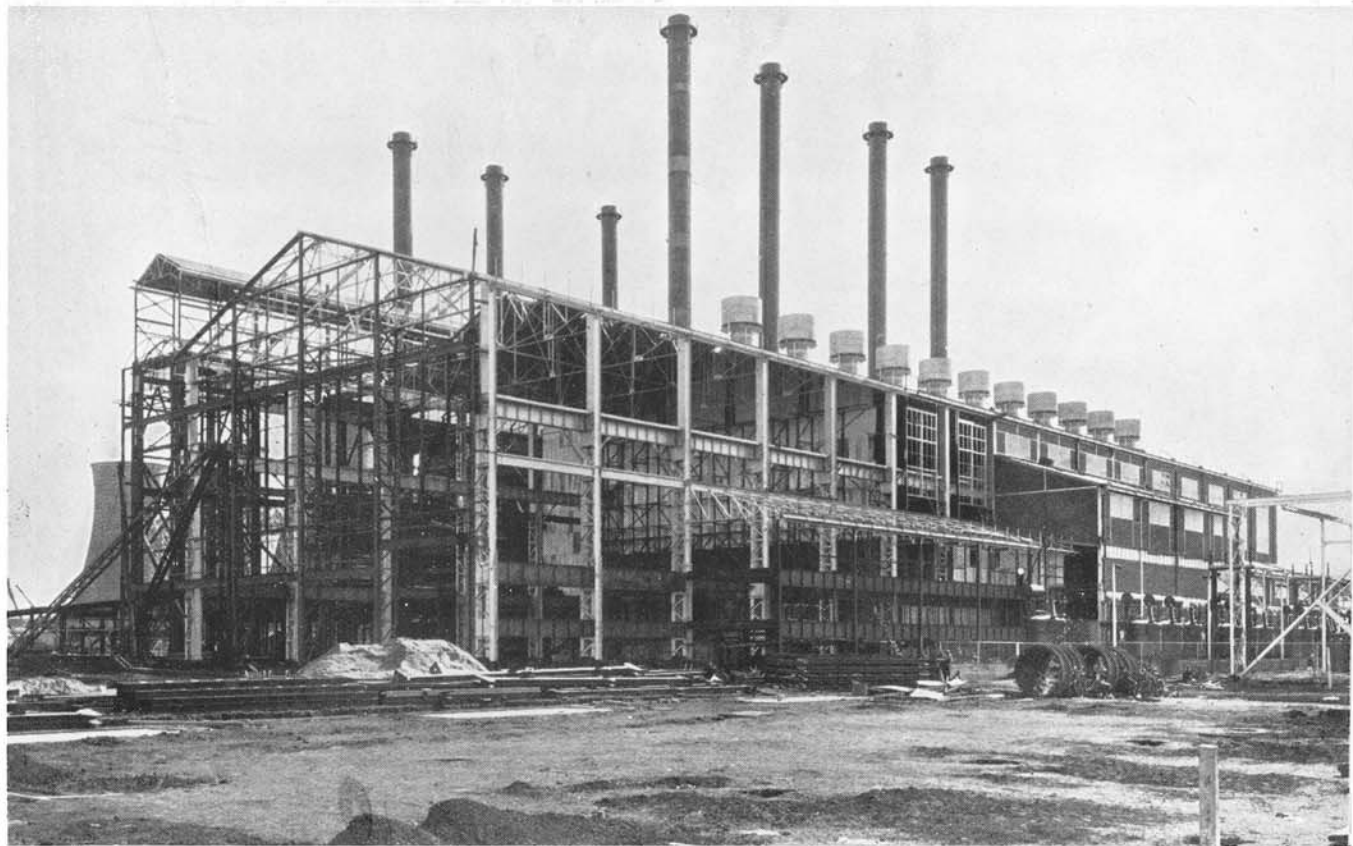
The water required for the station is obtained from the storage area of the Rand Water Board at a point approximately five miles from the station, where the pumping plant is situated. It is anticipated that the requirements when the station is completed to its designed capacity will be 6,500,000 gallons per diem. The station will be operated on a base load and the output delivered to the system of The Victoria Falls and Transvaal Power Company, Limited, to meet the rapidly increasing demands of the gold mining and other industries along the Witwatersrand.



Klip Power Station.



Klip Power Station.



Klip Power Station.

RAND EXTENSION UNDERTAKING.

The capital expenditure at 31st December, 1935, was £153,833. The Undertaking is operated by The Victoria Falls and Transvaal Power Company, Limited (to whom the licence granted to the Commission was ceded) in conjunction with its system of supply on the Witwatersrand, electricity being obtained from the Witbank and Klip generating stations of the Commission and from the stations of the Company at Brakpan, Simmer Pan, Rosherville and Vereeniging.

The Undertaking was in operation for only a portion of the year.

An extensive system of transmission and distribution lines has already been established in the area and seventeen consumer's sub-stations, chiefly for the supply of electricity to the gold mining industry, have been erected.

LIST OF ANNEXURES.

ANNEXURE "A"—ACCOUNTS.

	Page.
The Report of the Auditors	35-37
Balance Sheet	38-39
Schedule of Expenditure on Capital Account	41
Statement Showing the Investments of the Redemption Fund ...	43
Account No. 1—Redemption Fund Account, £500,000 Loan ...	44-45
Account No. 2—Redemption Fund Account, £2,500,000 Loan ...	46-47
Account No. 3—Redemption Fund Account, £6,750,000 Loan ...	48-49
Account No. 4—Redemption Fund Account, £2,500,000 Loan ...	50-51
Account No. 5—Reserve Fund Account	52-53
Revenue and Expenditure Accounts in respect of—	
Account No. 6—Natal Central Undertaking	54-55
Account No. 7—Witbank Undertaking	56-57
Account No. 8—Capetown Undertaking	58-59
Pooled Costs, Salt River and Dock Road Power Stations ...	60-61
Account No. 9—Durban Undertaking	62-63
Account No. 10—Sabie Undertaking	64-65
Account No. 11—Rand Extension Undertaking	66-67

ANNEXURE "B."

	Page
Statement.	
1. Summary of principal plant and equipment installed as at 31st December, 1935	68-69
2. Summary of principal plant and equipment in course of installation or on order as at 31st December, 1935 ...	70
3. Statement showing the price or rent of land or other property acquired or hired by the Commission during the year 1935	71

ANNEXURE " C."

	Page.
Electricity Supply Schemes of Urban Local Authorities reported upon by the Commission in terms of Section 38 of the Electricity Act, 1922 	73

ANNEXURE " D."

Statement.	Page.
4. Units sold to all consumers during the past ten years ...	74
5. Statistics relating to the Commission's Undertakings for the year 1935 	74
6. Particulars of coal used at the Commission's Steam-raising Power Stations 	75
7. Particulars of staff employed.	75

THE REPORT OF THE AUDITORS.

Johannesburg,
2nd May, 1936.

The Chairman and Members,
Electricity Supply Commission,
Johannesburg.

GENTLEMEN,

We have completed the audit of the books and accounts for the year ended 31st December 1935 and have to report as follows:—

CAPETOWN UNDERTAKING.

During the year under review expenditure was incurred in removing certain boilers at the Salt River Power Station and replacing them with boilers capable of giving greater and more efficient service. The whole of the cost involved therein has been charged to Capital Account. This substitution has been made by arrangement with the Corporation of Capetown and the cost of the new boilers will form a portion of the part of the capital of the Pooled Stations on which the annual charge for interest and redemption is borne jointly by the Capetown Corporation and the Commission in terms of the Pooling Agreement.

Under the circumstances we concur with the method adopted in treating this matter.

DURBAN UNDERTAKING.

During the year under review the Commission concluded arrangements for the supply of power to various consumers on the South Coast of Natal. Included in the new customers, so taking power, was the supply involving reticulation in the town of Umkomaas. The Umkomaas Town Board already had a small Power Station in existence in respect of which it had raised Loans, and liability for these Loans totalling £10,380 has been assumed by the Commission. A Sinking Fund for the redemption of these Loans existed at 31st December 1935 amounting to £1,733 12s., which, however, at the end of the year had not been fully invested.

KLIP UNDERTAKING.

Considerable expenditure has been incurred during the year 1935 in respect of the new Power Station known as Klip Station near Vereeniging. No portion of this Undertaking had come into operation at the end of 1935. A considerable part of the amount of the commitments shown on the note in the Balance Sheet is in respect of this Undertaking. The Klip Power Station as well as the Rand Extension Undertaking are being constructed under an agreement between the Commission and the Victoria Falls and Transvaal Power Co. Ltd. in terms of which, inter alia, the Klip Power Station will be operated by the Power Company on behalf of the Commission.

RAND EXTENSIONS UNDERTAKING.

This Undertaking comprises certain transmission lines and transformer stations in connection with the distribution of power from the Power Stations of the Commission and the Victoria Falls Power Co. Ltd. comprising the Rand Witbank System to various points not covered by the licence of the Victoria Falls & Transvaal Power Co. Ltd. The construction and operation of this Undertaking come under the terms of the agreement referred to in the preceding paragraph. A small portion of the Undertaking had come into commercial operation at the end of 1935 and a Revenue Account showing such operation is attached to the Accounts.

REDEMPTION FUND.

In accordance with the Schedule to the Electricity Act the Commission has established Redemption Funds for all loans outstanding at 31st December 1935. We have certified at the foot of the Redemption Fund Accounts that we are satisfied as to the maintenance of the Fund for each loan at the amount required by the Schedule to the Act. In the case of Loans 3, 4 and 5, the amount of each Fund at 31st December, 1935, was in excess of the statutory requirements of the Schedule to the Electricity Act. The procedure followed by the Commission is to charge the Undertaking concerned with redemption calculated on the expenditure defrayed out of the loan in question from the date such expenditure comes into beneficial operation. Owing to the different circumstances prevailing at the various Undertakings, and also amongst different classes of consumers at the same Undertaking, the Commission has, in some cases by agreement with consumers, and in others by its own decision, made provision for the redemption of such expenditure over a shorter period than the period of the loan.

It follows, therefore, that under present arrangements the Redemption Funds will require to be maintained at higher levels than are necessary to comply with the requirements of the Schedule to the Act.

A further reason for the excess in the Redemption Fund of Loans 4 and 5, is the transfer thereto in previous years of the balance of the Redemption Fund created for Loan 1, which was paid off entirely from the proceeds of these loans.

In the case of Loan 6 the Minister, in terms of Clause 16 (2) of the Schedule to the Electricity Act, has fixed 1st August 1936 as the date from which the redemption of the loan shall commence. In the meantime; however, as certain capital works paid for out of this loan had come into beneficial operation prior to 31st December 1935, a charge has been made in respect of such works and a small amount contributed during 1935 to the Redemption Fund of this Loan.

After studying the conditions applicable at the various Undertakings in the light of the circumstances mentioned above, we are satisfied that adequate provision has been made for the redemption of the loans referred to.

HEAD OFFICE ADMINISTRATION AND ENGINEERING EXPENSES.

In terms of the Agreement between the Commission and The Victoria Falls and Transvaal Power Company, Limited in connection with the Klip

and Rand Extension Undertakings, the Commission became entitled to charge, from time to time, as a part of the Capital Cost of the works, certain fees in respect of the Commission's Administration, Engineering and General Expenditure not otherwise provided for.

During 1935 certain of these fees have become payable and have been credited in relief of Head Office Administration and Engineering Expenses for that year. While the gross expenditure under these headings has increased during the year, the net expenditure, allocated in terms of the Act to Undertakings in operation, shows a considerable reduction as a result of the credits for fees referred to above. The fees so recovered are in respect of negotiations and work done in the years 1933, 1934 and 1935, but the amount only accrued on the signing of the Agreement in 1935. Unfortunately it is not possible to allocate this amount over the three years to which it refers. As a result the charges for the year 1935 to the Undertaking Revenue Accounts in respect of Head Office Administration and General Engineering Expenses are understated in each case by the amount of the credit for fees applicable to the years 1933 and 1934, which, as stated above, is not ascertainable. In terms of the Agreement further fees will be recoverable in the years 1936 and 1937.

The allocation of Head Office Administration and the Engineering Expenses as between the Undertakings has been made by the Commission on the same basis as in 1934.

GENERAL.

As the result of our audit of the Books and Accounts of the Commission for the year 1935, and, subject to the foregoing remarks, in terms of Clause 13 (4) of the Electricity Act 1922, we certify as follows:—

- (a) We have found the accounts of the Commission to be in order.
- (b) The accounts issued present a true and correct view of the financial position of the Commission and of its transactions and of the results of trading.
- (c) Due provision has been made for the redemption and repayment of moneys borrowed.
- (d) The value of the assets of the Commission is correctly stated.
- (e) Sums fixed by the Commission have been set aside to the Reserve Fund under Section 9 as prescribed.
- (f) All our requirements and recommendations as Auditors have been complied with and carried out.

Yours faithfully,

B. HALSEY,

ALEX. AIKEN & CARTER.

THE REPORT OF THE AUDITORS.

Johannesburg,
2nd May, 1936.

The Chairman and Members,
Electricity Supply Commission,
Johannesburg.

GENTLEMEN,

We have completed the audit of the books and accounts for the year ended 31st December 1935 and have to report as follows:—

CAPETOWN UNDERTAKING.

During the year under review expenditure was incurred in removing certain boilers at the Salt River Power Station and replacing them with boilers capable of giving greater and more efficient service. The whole of the cost involved therein has been charged to Capital Account. This substitution has been made by arrangement with the Corporation of Capetown and the cost of the new boilers will form a portion of the part of the capital of the Pooled Stations on which the annual charge for interest and redemption is borne jointly by the Capetown Corporation and the Commission in terms of the Pooling Agreement.

Under the circumstances we concur with the method adopted in treating this matter.

DURBAN UNDERTAKING.

During the year under review the Commission concluded arrangements for the supply of power to various consumers on the South Coast of Natal. Included in the new customers, so taking power, was the supply involving reticulation in the town of Umkomaas. The Umkomaas Town Board already had a small Power Station in existence in respect of which it had raised Loans, and liability for these Loans totalling £10,380 has been assumed by the Commission. A Sinking Fund for the redemption of these Loans existed at 31st December 1935 amounting to £1,733 12s., which, however, at the end of the year had not been fully invested.

KLIP UNDERTAKING.

Considerable expenditure has been incurred during the year 1935 in respect of the new Power Station known as Klip Station near Vereeniging. No portion of this Undertaking had come into operation at the end of 1935. A considerable part of the amount of the commitments shown on the note in the Balance Sheet is in respect of this Undertaking. The Klip Power Station as well as the Rand Extension Undertaking are being constructed under an agreement between the Commission and the Victoria Falls and Transvaal Power Co. Ltd. in terms of which, inter alia, the Klip Power Station will be operated by the Power Company on behalf of the Commission.

RAND EXTENSIONS UNDERTAKING.

This Undertaking comprises certain transmission lines and transformer stations in connection with the distribution of power from the Power Stations of the Commission and the Victoria Falls Power Co. Ltd. comprising the Rand Witbank System to various points not covered by the licence of the Victoria Falls & Transvaal Power Co. Ltd. The construction and operation of this Undertaking come under the terms of the agreement referred to in the preceding paragraph. A small portion of the Undertaking had come into commercial operation at the end of 1935 and a Revenue Account showing such operation is attached to the Accounts.

REDEMPTION FUND.

In accordance with the Schedule to the Electricity Act the Commission has established Redemption Funds for all loans outstanding at 31st December 1935. We have certified at the foot of the Redemption Fund Accounts that we are satisfied as to the maintenance of the Fund for each loan at the amount required by the Schedule to the Act. In the case of Loans 3, 4 and 5, the amount of each Fund at 31st December, 1935, was in excess of the statutory requirements of the Schedule to the Electricity Act. The procedure followed by the Commission is to charge the Undertaking concerned with redemption calculated on the expenditure defrayed out of the loan in question from the date such expenditure comes into beneficial operation. Owing to the different circumstances prevailing at the various Undertakings, and also amongst different classes of consumers at the same Undertaking, the Commission has, in some cases by agreement with consumers, and in others by its own decision, made provision for the redemption of such expenditure over a shorter period than the period of the loan.

It follows, therefore, that under present arrangements the Redemption Funds will require to be maintained at higher levels than are necessary to comply with the requirements of the Schedule to the Act.

A further reason for the excess in the Redemption Fund of Loans 4 and 5, is the transfer thereto in previous years of the balance of the Redemption Fund created for Loan 1, which was paid off entirely from the proceeds of these loans.

In the case of Loan 6 the Minister, in terms of Clause 16 (2) of the Schedule to the Electricity Act, has fixed 1st August 1936 as the date from which the redemption of the loan shall commence. In the meantime; however, as certain capital works paid for out of this loan had come into beneficial operation prior to 31st December 1935, a charge has been made in respect of such works and a small amount contributed during 1935 to the Redemption Fund of this Loan.

After studying the conditions applicable at the various Undertakings in the light of the circumstances mentioned above, we are satisfied that adequate provision has been made for the redemption of the loans referred to.

HEAD OFFICE ADMINISTRATION AND ENGINEERING EXPENSES.

In terms of the Agreement between the Commission and The Victoria Falls and Transvaal Power Company, Limited in connection with the Klip

and Rand Extension Undertakings, the Commission became entitled to charge, from time to time, as a part of the Capital Cost of the works, certain fees in respect of the Commission's Administration, Engineering and General Expenditure not otherwise provided for.

During 1935 certain of these fees have become payable and have been credited in relief of Head Office Administration and Engineering Expenses for that year. While the gross expenditure under these headings has increased during the year, the net expenditure, allocated in terms of the Act to Undertakings in operation, shows a considerable reduction as a result of the credits for fees referred to above. The fees so recovered are in respect of negotiations and work done in the years 1933, 1934 and 1935, but the amount only accrued on the signing of the Agreement in 1935. Unfortunately it is not possible to allocate this amount over the three years to which it refers. As a result the charges for the year 1935 to the Undertaking Revenue Accounts in respect of Head Office Administration and General Engineering Expenses are understated in each case by the amount of the credit for fees applicable to the years 1933 and 1934, which, as stated above, is not ascertainable. In terms of the Agreement further fees will be recoverable in the years 1936 and 1937.

The allocation of Head Office Administration and the Engineering Expenses as between the Undertakings has been made by the Commission on the same basis as in 1934.

GENERAL.

As the result of our audit of the Books and Accounts of the Commission for the year 1935, and, subject to the foregoing remarks, in terms of Clause 13 (4) of the Electricity Act 1922, we certify as follows:—

- (a) We have found the accounts of the Commission to be in order.
- (b) The accounts issued present a true and correct view of the financial position of the Commission and of its transactions and of the results of trading.
- (c) Due provision has been made for the redemption and repayment of moneys borrowed.
- (d) The value of the assets of the Commission is correctly stated.
- (e) Sums fixed by the Commission have been set aside to the Reserve Fund under Section 9 as prescribed.
- (f) All our requirements and recommendations as Auditors have been complied with and carried out.

Yours faithfully,

B. HALSEY,

ALEX. AIKEN & CARTER.

Electricity Supply
Incorporated under the
BALANCE SHEET at

Loan Capital		£12,250,000 0 0
Loan No. 1: Government of the Union of South Africa	£3,000,000 0 0	
Loan No. 2: Government of the Union of South Africa	5,000,000 0 0	
	£8,000,000 0 0	
<i>Less</i> —Repaid during 1933 and 1934	8,000,000 0 0	
Local Registered Stocks—		
Loan No. 3 4½ per cent. 1953/63	500,000 0 0	
Loan No. 4 4½ per cent. 1953	2,500,000 0 0	
Loan No. 5 3½ per cent. 1954/64	6,750,000 0 0	
Loan No. 6 3½ per cent. 1959/64	2,500,000 0 0	
Interest Accrued on Loan Capital		52,791 19 1
Loan—Umkomaas Town Board		10,380 0 0
Sundry Creditors and Credit Balances		390,327 8 2
Pension Fund		66,356 4 8
Redemption Fund		831,383 14 4
(As per Accounts Nos. 1 to 4)		
Loan No. 3	37,510 17 3	
Loan No. 4	482,691 18 11	
Loan No. 5	310,460 12 3	
Loan No. 6	720 5 11	
Sinking Fund		1,733 12 0
(Umkomaas Loan)		
Reserve Fund		786,220 16 7
(As per Account No. 5)		
Balance on Revenue Accounts		48,893 17 2
(As per Accounts Nos. 6 to 10)		
Natal Central Undertaking	15,455 2 0	
Witbank Undertaking	11,486 8 3	
Capetown Undertaking	13,171 1 8	
Durban Undertaking	8,083 13 1	
Sabie Undertaking	697 12 2	

NOTE.—In addition to the liabilities shown above, the Commission is committed to the extent of approximately £2,415,000 for expenditure on Capital Account; also £12,000 chargeable against Reserve Fund.

£14,438,087 12 0

H. J. VAN DER BIJL, Chairman.
A. E. HARTE, C.A. (S.A.), Chief Accountant.

Johannesburg,
31st March, 1936.

Commission.

Electricity Act, 1922.

31st DECEMBER, 1935.

Expenditure on Capital Account—		
(As per Schedule attached.)		
Land and Rights	£142,248 7 0	
Buildings and Civil Works	3,122,917 6 1	
Machinery and Plant	8,225,318 14 3	
		£11,490,484 7 4
<i>Less</i> —Net Revenue during Construction	132,724 1 7	
Provision made prior to Financial Adjustments Act, 1930, for repayment of advances, appropriated in reduction of Capital Expenditure	123,650 1 10	
		256,374 3 5
		11,234,110 3 11
		47,999 6 8
Movable Plant and Equipment (less depreciation)		
Workshop Equipment, Instruments, Tools and Loose Plant	28,224 12 5	
Transportation Equipment	2,704 19 11	
Furniture, Fixtures and Fittings	17,069 14 4	
Stores and Materials		120,968 5 4
Sundry Debtors and Debit Balances		128,227 3 4
Investments		542,653 11 10
Cash on deposit at interest	542,052 10 0	
Interest Accrued	601 1 10	
Cash on Current Account		621,196 19 8
Investment of Pension Fund		66,367 9 10
Amount invested in Municipal and Electricity Supply Commission Stocks	66,057 10 0	
Interest Accrued	309 19 10	
Investment of Redemption Fund		842,513 6 10
(As per Statements attached.)		
Loan No. 3	37,663 11 0	
Loan No. 4	481,744 14 5	
Loan No. 5	322,949 6 8	
Loan No. 6	155 14 9	
Investment of Sinking Fund		639 0 3
Amount invested in Municipal Stocks	625 0 0	
Interest Accrued	14 0 3	
Investment of Reserve Fund		833,412 4 4
Amount invested in Municipal and Electricity Supply Commission Stocks and Debentures guaranteed by the Government of the Union of South Africa	830,023 0 0	
Interest Accrued	3,389 4 4	
		£14,438,087 12 0

Referred to in our Report of 2nd May, 1936.

ALEX. AIKEN & CARTER, }
B. HALSEY, } Auditors.

Electricity Supply Commission.

SCHEDULE OF EXPENDITURE ON CAPITAL ACCOUNT to 31st December, 1935.

Expenditure in connection with Electricity Undertakings.	Total to 31st December, 1934.	Year ended 31st December, 1935.	Total to 31st December, 1935.
NATAL CENTRAL UNDERTAKING:			
Land and Rights	£18,519 6 2	Cr. £1,659 2 0	£16,860 4 2
Buildings and Civil Works	798,290 0 5	Cr. 43,113 18 10	755,176 1 7
Machinery and Plant	2,771,577 15 10	201,667 14 3	2,973,245 10 1
	3,588,387 2 5	156,894 13 5	3,745,281 15 10
Provision made prior to Financial Adjustments Act, 1930, for repay- ment of Advances, appropriated in reduction of Capital Expenditure ...	Cr. 123,650 1 10	—	Cr. 123,650 1 10
	£3,464,737 0 7	£156,894 13 5	£3,621,631 14 0
WITBANK UNDERTAKING:			
Land and Rights	£9,221 3 2	—	£9,221 3 2
Buildings and Civil Works	578,854 10 1	Cr. £1,285 6 6	577,569 3 7
Machinery and Plant	1,660,050 16 9	33,206 11 9	1,693,257 8 6
	2,248,126 10 0	31,921 5 3	2,280,047 15 3
Net Revenue during Construction ...	Cr. 103,458 8 4	—	Cr. 103,458 8 4
	£2,144,668 1 8	£31,921 5 3	£2,176,589 6 11
CAPETOWN UNDERTAKING:			
Land and Rights	£22,601 19 3	£131 14 1	£22,733 13 4
Buildings and Civil Works	675,625 5 6	12,120 8 8	687,745 14 2
Machinery and Plant	1,399,218 8 3	97,626 4 10	1,496,844 13 1
	2,097,445 13 0	109,878 7 7	2,207,324 0 7
Net Revenue during Construction ...	Cr. 5,019 2 1	—	Cr. 5,019 2 1
	£2,092,426 10 11	£109,878 7 7	£2,202,304 18 6
DURBAN UNDERTAKING:			
Land and Rights	£29,689 3 0	£132 19 4	£29,822 2 4
Buildings and Civil Works	350,866 16 6	3,398 13 2	354,265 9 8
Machinery and Plant	667,664 6 0	52,364 16 9	720,029 2 9
	1,048,220 5 6	55,896 9 3	1,104,116 14 9
Net Revenue during Construction ...	Cr. 15,121 15 4	—	Cr. 15,121 15 4
	£1,033,098 10 2	£55,896 9 3	£1,088,994 19 5
SABIE UNDERTAKING:			
Land and Rights	£510 0 0	—	£510 0 0
Buildings and Civil Works	65,458 1 8	—	65,458 1 8
Machinery and Plant	39,301 7 5	—	39,301 7 5
	105,269 9 1	—	105,269 9 1
Net Revenue during Construction ...	Cr. 9,124 15 10	—	Cr. 9,124 15 10
	£96,144 13 3	—	£96,144 13 3
KLIP UNDERTAKING:			
Land and Rights	£3 13 3	£3,104 15 0	£3,108 13 3
Buildings and Civil Works	74,980 16 0	525,323 5 6	600,304 1 6
Machinery and Plant	113,913 4 9	1,035,302 0 11	1,149,215 5 8
	£188,897 19 0	£1,563,730 1 5	£1,752,628 0 5
RAND EXTENSION UNDERTAKING:			
Land and Rights	—	£407 7 9	£407 7 9
Buildings and Civil Works	£771 1 6	Cr. 771 1 6	—
Machinery and Plant	49,461 15 0	103,963 11 9	153,425 6 9
	£50,232 16 6	£103,599 18 0	£153,832 14 6
HEAD OFFICE:			
Land	£59,785 3 0	Cr. £200 0 0	£59,585 3 0
Building	6,730 18 7	75,667 15 4	82,398 13 11
	£66,516 1 7	£75,467 15 4	£141,983 16 11
SUMMARY:			
Land and Rights	£140,330 12 10	£1,917 14 2	£142,248 7 0
Buildings and Civil Works	2,551,577 10 3	571,339 15 10	3,122,917 6 1
Machinery and Plant	6,701,187 14 0	1,524,131 0 3	8,225,318 14 3
	9,393,095 17 1	2,097,388 10 3	11,490,484 7 4
Net Revenue during Construction ...	Cr. 132,724 1 7	—	Cr. 132,724 1 7
Provision made prior to Financial Adjustments Act, 1930, for repay- ment of Advances, appropriated in reduction of Capital Expenditure ...	Cr. 123,650 1 10	—	Cr. 123,650 1 10
	£9,136,721 13 8	£2,097,388 10 3	£11,234,110 3 11

Electricity Supply Commission.

STATEMENT SHOWING DETAILS OF INVESTMENTS ON BEHALF OF THE
REDEMPTION FUND IN RESPECT OF THE £500,000 ELECTRICITY
SUPPLY COMMISSION 4½% LOCAL REGISTERED STOCK, 1953/63
(LOAN No. 3) AS AT 31st DECEMBER, 1935.

£34,200	Electricity Supply Commission 4½% Local Registered Stock, 1953/63	£37,525 19 2
	Interest Accrued	137 11 10
		£37,663 11 0

STATEMENT SHOWING DETAILS OF INVESTMENTS ON BEHALF OF THE
REDEMPTION FUND IN RESPECT OF THE £2,500,000 ELECTRICITY
SUPPLY COMMISSION 4½% LOCAL REGISTERED STOCK, 1953
(LOAN No. 4) AS AT 31st DECEMBER, 1935.

£315,000	Union of South Africa 4½% Local Registered Stock, 1953	£315,000 0 0
£51,200	South African Iron and Steel Industrial Corporation, Limited, 5% Guaranteed First Mortgage Registered Debentures, 1946/71	51,200 0 0
£113,750	Electricity Supply Commission 4½% Local Registered Stock, 1953	113,750 0 0
	Interest Accrued	1,794 14 5
		£481,744 14 5

STATEMENT SHOWING DETAILS OF INVESTMENTS ON BEHALF OF THE
REDEMPTION FUND IN RESPECT OF THE £6,750,000 ELECTRICITY
SUPPLY COMMISSION 3½% LOCAL REGISTERED STOCK, 1954/64
(LOAN No. 5) AS AT 31st DECEMBER, 1935.

£10,000	South African Iron and Steel Industrial Corporation, Limited, 5% Guaranteed First Mortgage Registered Debentures, 1946/71	£9,975 0 0
£42,750	Electricity Supply Commission 4½% Local Registered Stock, 1953/63	42,750 0 0
£272,900	Electricity Supply Commission 3½% Local Registered Stock, 1954/64	268,337 6 11
	Interest Accrued	1,886 19 9
		£322,949 6 8

STATEMENT SHOWING DETAILS OF INVESTMENTS ON BEHALF OF THE
REDEMPTION FUND IN RESPECT OF THE £2,500,000 ELECTRICITY
SUPPLY COMMISSION 3½% LOCAL REGISTERED STOCK, 1959/64
(LOAN No. 6) AS AT 31st DECEMBER, 1935.

£150	Electricity Supply Commission 3½% Local Registered Stock, 1959/64	£155 5 11
	Interest Accrued	8 10
		£155 14 9

Johannesburg,
31st March, 1936.

A. E. HARTE, C.A. (S.A.), Chief Accountant.

Electricity Supply

Dr. Redemption Fund Account for the
in respect of £2,500,000 Electricity Supply Commission

To	Balance as per Balance Sheet	£482,691 18 11
	Natal Central Undertaking	£3,051 8 3
	Witbank Undertaking	336,374 6 9
	Capetown Undertaking	6,940 18 3
	Durban Undertaking	112,844 3 11
	Sabie Undertaking	22,713 5 4
	Head Office	767 16 5
					£482,691 18 1

A. E. HARTE, C.A. (S.A.), Chief Accountant.

Johannesburg,
31st March, 1936.

Commission.

Account No. 2.

Year ended 31st December, 1935,
4½% Local Registered Stock 1953 (Loan No. 4).

Cr.

By	Balance at 31st December, 1934, brought forward	£396,067 0 3
	Witbank Undertaking	£285,557 7 7
	Capetown Undertaking	1,798 19 11
	Durban Undertaking	88,989 1 3
	Sabie Undertaking	19,147 7 5
	Head Office	574 4 1
	„ Amounts Contributed during the Year out of Revenue				68,400 9 5
	Natal Central Undertaking	3,002 16 7
	Witbank Undertaking	37,797 11 3
	Capetown Undertaking	4,988 16 10
	Durban Undertaking	19,801 7 8
	Sabie Undertaking	2,643 7 9
	Head Office	166 9 4
	„ Nett Proceeds of Sales of Fixed Property	518 6 5
	Witbank Undertaking	441 2 4
	Sabie Undertaking	77 4 1
	„ Profit on Sales and Redemption of Investments	32 15 0
	„ Interest Earned on Investments	17,673 7 10
	Interest Earned	19,699 15 8
	Less—Premium on Investments written off	2,026 7 10
	Natal Central Undertaking	48 11 8
	Witbank Undertaking	12,554 13 4
	Capetown Undertaking	152 18 6
	Durban Undertaking	4,046 7 10
	Sabie Undertaking	843 14 5
	Head Office	27 2 1
					£482,691 18 11

We hereby certify that we are satisfied both as to the correctness of the Accounts and Books of the Redemption Fund and as to the Maintenance of the Fund at the amount required by the Schedule to the Electricity Act, 1922, subject to the remarks contained in our report dated 2nd May, 1936.

ALEX. AIKEN & CARTER, }
B. HALSEY, } Auditors.

Electricity Supply

Dr. Redemption Fund Account for the
in respect of £6,750,000 Electricity Supply Commission

To Balance as per Balance Sheet		£310,460 12 3
Natal Central Undertaking	£103,113 2 10	
Witbank Undertaking	112,775 5 10	
Capetown Undertaking	52,507 5 3	
Durban Undertaking	34,304 14 0	
Sabie Undertaking	7,526 4 11	
Head Office	233 19 5	
						£310,460 12 3

A. E. HARTE, C.A. (S.A.), Chief Accountant.

Johannesburg,
31st March, 1936.

Commission.

Account No. 3.

Cr. Year ended 31st December, 1935,
3½% Local Registered Stock, 1954/64 (Loan No. 5).

By Balance at 31st December, 1934, brought forward	£175,543 5 1
Natal Central Undertaking	£32,980 1 10	
Witbank Undertaking	92,014 19 8	
Capetown Undertaking	16,989 14 11	
Durban Undertaking	27,022 19 1	
Sabie Undertaking	6,369 8 11	
Head Office	166 0 8	
„ Amounts Contributed during the Year out of Revenue					125,560 9 8
Natal Central Undertaking	67,626 6 7	
Witbank Undertaking	16,745 2 4	
Capetown Undertaking	34,166 3 1	
Durban Undertaking	6,080 9 9	
Sabie Undertaking	882 6 8	
Head Office	60 1 3	
„ Net Proceeds of Sales of Fixed Property		56 0 0
Natal Central Undertaking	10 0 0	
Capetown Undertaking	46 0 0	
„ Profit on Sales and Redemption of Investments		10 17 9
„ Interest Earned on Investments		9,289 19 9
Natal Central Undertaking	2,494 13 6	
Witbank Undertaking	4,009 9 9	
Capetown Undertaking	1,304 6 2	
Durban Undertaking	1,199 11 8	
Sabie Undertaking	274 1 5	
Head Office	7 17 3	
					£310,460 12 3

We hereby certify that we are satisfied both as to the correctness of the Accounts and Books of the Redemption Fund and as to the Maintenance of the Fund at the amount required by the Schedule to the Electricity Act, 1922, subject to the remarks contained in our report dated 2nd May, 1936.

ALEX. AIKEN & CARTER,
B. HALSEY, } Auditors.

Electricity Supply

Dr. Redemption Fund Account for the
in respect of £2,500,000 Electricity Supply Commission

To Balance as per Balance Sheet	£720 5 11
Rand Extension Undertaking.	
	£720 5 11

A. E. HARTE, C.A. (S.A.), Chief Accountant.

Johannesburg,
31st March, 1936.

Commission.

Account No. 4.

Cr. Nine Months ended 31st December, 1935,
3½% Local Registered Stock, 1959/64 (Loan No. 6).

By Amount Contributed during the Year out of Revenue	£720 5 11
Rand Extension Undertaking.	
„ Interest Earned on Investments—	
Interest Earned	£0 3 5
<i>Less</i> —Appropriated in reduction of Premium on Investments	0 3 5
	£720 5 11

We hereby certify that we are satisfied both as to the correctness of the Accounts and Books of the Redemption Fund and as to the Maintenance of the Fund at the amount required by the Schedule to the Electricity Act, 1922, subject to the remarks contained in our report dated 2nd May, 1936.

ALEX. AIKEN & CARTER, }
 B. HALSEY, } Auditors.

Electricity Supply

Dr. Reserve Fund Account for the

To	Expenditure during the Year on Replacements and Betterment		£46,580 1 11
	Natal Central Undertaking	£11,399 12 7	
	Witbank Undertaking	16,243 2 9	
	Capetown Undertaking	13,348 15 4	
	Durban Undertaking	4,134 4 0	
	Sabie Undertaking	1,454 7 3	
	„ Balance as per Balance Sheet	786,220 16 7	
	Natal Central Undertaking	365,359 16 7	
	Witbank Undertaking	180,254 13 11	
	Capetown Undertaking	146,327 10 5	
	Durban Undertaking	86,482 8 10	
	Sabie Undertaking	7,514 3 10	
	Rand Extension Undertaking	282 3 0	
		£832,800 18 6	

Johannesburg,
31st March, 1936.

Account No. 5.

Commission.

Year ended 31st December, 1935. Cr.

By	Balance at 31st December, 1934, brought forward		£706,231 5 5
	Natal Central Undertaking	£326,834 6 9	
	Witbank Undertaking	164,523 8 0	
	Capetown Undertaking	134,673 10 0	
	Durban Undertaking	72,158 18 11	
	Sabie Undertaking	8,041 1 9	
	„ Amounts set aside during the Year as per Revenue Accounts	93,980 11 1	
	Natal Central Undertaking	35,000 0 0	
	Witbank Undertaking	24,000 0 0	
	Capetown Undertaking	19,000 0 0	
	Durban Undertaking	15,100 0 0	
	Sabie Undertaking	600 0 0	
	Rand Extension Undertaking	280 11 1	
	„ Other Contributions	548 17 6	
	„ Profit on Sales and Redemption of Investments	43 9 9	
	„ Interest Earned on Investments	31,996 14 9	
		£832,800 18 6	
		£832,800 18 6	

A. E. HARTE, C.A. (S.A.), Chief Accountant.

Electricity Supply

NATAL CENTRAL

Dr. Revenue Account for the Year

Generation of Electricity.			
To Operation—			
Fuel	£66,694 17 2		
Water, Oil, Waste and Stores	949 5 11		
Salaries and Wages	15,017 4 10		
Other Expenses	33 6 10		
„ Maintenance—			
Stores	5,200 19 4		
Salaries and Wages	8,608 18 6		
Other Expenses	664 2 4		
„ Electricity Purchased		£97,168 14 11	
		203 7 4	
Distribution of Electricity.			
„ Operation and Maintenance—			
Stores	2,975 15 0		
Salaries and Wages	13,066 3 2		
Other Expenses	3,501 18 0		
		19,543 16 2	
General Expenses.			
„ Local Administration and Technical Management ...	7,124 1 11		
„ General Expenses (including Maintenance of Quarters, Stores Expenses, Rates, Insurance, Pension Fund Contributions, etc.)	9,295 10 2		
„ Head Office Administration and General Expenses ...	4,603 3 2		
„ Engineering Expenses	2,436 7 1		
		23,459 2 4	
		140,375 0 9	
„ Interest		132,857 16 6	
„ Redemption Fund—			
Loan No. 3	53 18 0		
Loan No. 4	3,002 16 7		
Loan No. 5	67,626 6 7		
		70,683 1 2	
„ Amount set aside to Reserve Fund		35,000 0 0	
„ Balance carried down		5,563 19 3	
		£384,479 17 8	
To Balance as per Balance Sheet		£15,455 2 0	
		£15,455 2 0	

A. E. HARTE, C.A. (S.A.), Chief Accountant.

Johannesburg,
31st March, 1936.

Commission.

UNDERTAKING

ended 31st December, 1935.

Cr.

By Sales of Electricity—			
Traction Supplies	£315,242 18 10		
Bulk Supplies	49,882 17 6		
Industrial Supplies	12,964 5 6		
Domestic and Lighting Supplies	5,234 1 10		
	383,324 3 8		
Less—Adjustment in respect of Industrial Supplies for the period prior to 31st December, 1934	3,273 11 3		
		£380,050 12 5	
„ Other Revenue		4,429 5 3	
		£384,479 17 8	
By Balance at 31st December, 1934, brought forward ...	£9,891 2 9		
„ Balance brought down	5,563 19 3		
		£15,455 2 0	

Referred to in our Report of 2nd May, 1936.

ALEX. AIKEN & CARTER,
B. HALSEY, } Auditors.

Electricity Supply

WITBANK

Dr. Revenue Account for the Year

Generation of Electricity.			
To Operation—			
Fuel		£75,753	5 0
Water, Oil, Waste and Stores		6,343	10 11
Salaries and Wages		24,174	19 11
Other Expenses		1,183	5 2
„ Maintenance—			
Stores		11,444	10 7
Salaries and Wages		11,584	15 3
Other Expenses		6,385	14 6
		£136,870	1 4
Distribution of Electricity.			
„ Operation and Maintenance—			
Stores		1,328	5 7
Salaries and Wages		3,168	10 10
Other Expenses		472	9 4
		4,969	5 9
General Expenses.			
„ Local Administration and Technical Management ...		7,516	17 6
„ General Expenses (including Maintenance of Quarters, Stores Expenses, Rates, Insurance, Pension Fund Contributions, etc.)		6,186	7 2
„ Administration, Engineering and General Expenses of Operating Party (The Victoria Falls and Transvaal Power Company, Limited)		6,908	15 4
„ Head Office Administration and General Expenses ...		3,647	5 9
„ Engineering Expenses		2,013	18 0
		26,273	3 9
		168,112	10 10
„ Interest		93,367	14 8
„ Redemption Fund—			
Loan No. 3		93	9 1
Loan No. 4		37,797	11 3
Loan No. 5		16,745	2 4
		54,636	2 8
„ Amount set aside to Reserve Fund		24,000	0 0
„ Balance carried down		6,733	1 3
		£346,849	9 5
To Balance as per Balance Sheet		£11,486	8 3
		£11,486	8 3

A. E. HARTE, C.A. (S.A.), Chief Accountant.

Johannesburg,
31st March, 1936.

Commission.

UNDERTAKING.

ended 31st December, 1935.

Cr.

By Sales of Electricity—			
Bulk Supplies		£276,308	0 0
Industrial Supplies		60,857	0 4
Domestic and Lighting Supplies		5,227	8 10
		£342,392	9 2
„ Other Revenue			4,457 0 3
		£346,849	9 5
By Balance at 31st December, 1934, brought forward ...		£4,753	7 0
„ Balance brought down		6,733	1 3
		£11,486	8 3

Referred to in our Report of 2nd May, 1936.

A. E. HARTE, C.A. (S.A.), Chief Accountant. }
ALEX. AIKEN & CARTER, } Auditors.
B. HALSEY, }

Electricity Supply

CAPETOWN

Dr. Revenue Account for the Year

Generation of Electricity.		£103,135 6 1
To Proportion of Pooled Costs ... (As per attached Statement)		£103,135 6 1
Distribution of Electricity.		
,, Operation and Maintenance—		
Stores	£2,674 16 3	
Salaries and Wages	12,045 10 3	
Other Expenses	4,591 11 2	
	19,311 17 8	
General Expenses.		
,, Local Administration and Technical Management ...	6,984 15 7	
,, General Expenses (including Maintenance of Quarters, Stores Expenses, Rates, Insurance, Pension Fund Contributions, etc.)	8,895 1 10	
,, Head Office Administration and General Expenses ...	4,127 1 6	
,, Engineering Expenses	2,067 4 2	
	22,074 3 1	
Less—Charged to Pooled Costs	2,622 0 7	
	19,452 2 6	
	141,899 6 3	
,, Interest 86,831 6 11		
,, Redemption Fund—		
Loan No. 3	11,320 13 11	
Loan No. 4	4,988 16 10	
Loan No. 5	34,166 3 1	
,, Amount set aside to Reserve Fund	19,000 0 0	
	156,307 0 9	
Less—Charged to Pooled Costs	36,526 6 4	
	119,780 14 5	
,, Balance carried down	14,811 12 11	
	£276,491 13 7	
To Balance at 31st December, 1934, brought forward ...	£1,640 11 3	
,, Balance as per Balance Sheet	13,171 1 8	
	£14,811 12 11	

A. E. HARTE, C.A. (S.A.), Chief Accountant.

Johannesburg,
31st March, 1936.

Commission.

UNDERTAKING.

ended 31st December, 1935. Cr.

By Sales of Electricity—		
Traction Supplies	£152,366 2 11	
Bulk Supplies	30,297 15 7	
Industrial Supplies	65,171 14 3	
Domestic and Lighting Supplies	26,101 8 6	
	£273,937 1 3	
,, Other Revenue	5,196 16 6	
Less—Credited to Pooled Costs	2,642 4 2	
	2,554 12 4	
By Balance brought down	£14,811 12 11	
	£14,811 12 11	

Referred to in our Report of 2nd May, 1936.

ALEX. AIKEN & CARTER, }
B. HALSEY, } Auditors.

Electricity Supply Commission

SALT RIVER AND DOCK

Dr. Statement of Pooled Costs for the Year ended

	Expenditure by Electricity Supply Commission.	Expenditure by City of Capetown.	Pooled Costs.
Pooled Generation of Electricity.			
To Operation and Maintenance—			
Fuel	£163,666 0 9	£37,282 18 3	£200,948 19 0
Water, Oil, Waste and Stores ...	7,420 9 5	2,572 11 7	9,993 1 0
Salaries and Wages	13,624 15 3	11,160 10 1	24,785 5 4
Other Expenses	13,876 4 4	3,967 5 2	17,843 9 6
„ General Expenses (including Stores Expenses, Rates, Insurance, Pension Fund Contributions, etc.) ...	2,622 0 7	2,041 3 1	4,663 3 8
„ Interest	19,385 13 0	—	19,385 13 0
„ Redemption Fund	15,133 18 9	—	15,133 18 9
„ Reserve Fund	2,006 14 7	—	2,006 14 7
	£237,735 16 8	£57,024 8 2	£294,760 4 10

Capetown,
31st March, 1936.

and City of Capetown.

ROAD POWER STATIONS.

31st December, 1935, and Allocation thereof. Cr.

By Allocation of Pooled Costs in terms of Agreement—			
Electricity Supply Commission	£103,135 6 1		
City of Capetown	188,541 12 1		
			£291,676 18 2
„ Sundry Revenue—			
Electricity Supply Commission	2,642 4 2		
City of Capetown	441 2 6		
			3,083 6 8
			£294,760 4 10

E. P. GROVE,
for GEO. H. SWINGLER,
Manager of the Pooled Stations.

Electricity Supply

DURBAN

Dr. Revenue Account for the Year

Generation of Electricity.			
To Operation—			
Fuel	£79,518	7	3
Water, Oil, Waste and Stores	1,170	10	6
Salaries and Wages	13,604	14	2
Other Expenses	849	4	5
„ Maintenance—			
Stores	6,271	1	6
Salaries and Wages	11,239	14	4
Other Expenses	1,337	13	9
	£113,991	5	11
Distribution of Electricity.			
„ Operation and Maintenance—			
Stores	35	9	9
Salaries and Wages	186	10	9
Other Expenses	58	14	3
	280	14	9
General Expenses.			
„ Local Administration and Technical Management ...	4,067	12	0
„ General Expenses (including Maintenance of Quarters, Stores Expenses, Rates, Insurance, Pension Fund Contributions, etc.)	3,606	7	11
„ Investigations and Development Expenses	2,848	2	9
„ Head Office Administration and General Expenses ...	3,728	15	7
„ Engineering Expenses	1,919	11	0
	16,170	9	3
	£130,442	9	11
„ Interest	46,904	3	5
„ Redemption Fund—			
Loan No. 3	4,287	18	10
Loan No. 4	19,801	7	8
Loan No. 5	6,080	9	9
	30,169	16	3
„ Sinking Fund	128	13	9
„ Amount set aside to Reserve Fund	15,100	0	0
„ Balance carried down	4,126	17	0
	£226,872	0	4
To Balance as per Balance Sheet	£8,083	13	1
	£8,083	13	1

A. E. HARTE, C.A. (S.A.), Chief Accountant.

Johannesburg,
31st March, 1936.

Commission.

UNDERTAKING.

ended 31st December, 1935.

Cr.

By Sales of Electricity—			
Bulk Supplies	£224,238	1	0
Industrial Supplies	321	10	7
Domestic and Lighting Supplies	1,892	14	10
	£226,452	6	5
„ Other Revenue	419	13	11
	£226,872	0	4
By Balance at 31st December, 1934, brought forward ...	£3,956	16	1
„ Balance brought down	4,126	17	0
	£8,083	13	1

Referred to in our Report of 2nd May, 1936.

ALEX. AIKEN & CARTER,
B. HALSEY, } Auditors.

Electricity Supply

SABIE

Dr. Revenue Account for the Year

Generation of Electricity.			
To Operation—			
Water, Oil, Waste and Stores	£41	8	3
Salaries and Wages	1,787	16	5
„ Maintenance—			
Stores	724	8	4
Salaries and Wages	270	4	3
Other Expenses	137	14	3
		£2,961	11 6
Distribution of Electricity.			
„ Operation and Maintenance—			
Stores	37	0	1
Salaries and Wages	254	10	6
Other Expenses	78	3	10
		369	14 5
General Expenses.			
„ Local Administration and Technical Management ...	354	7	9
„ General Expenses (including Maintenance of Quarters, Insurance, Pension Fund Contributions, etc.) ...	207	6	0
„ Head Office Administration and General Expenses ...	474	0	9
„ Engineering Expenses	246	1	11
		1,281	16 5
		4,613	2 4
		4,248	7 3
„ Interest			
„ Redemption Fund—			
Loan No. 4	2,643	7	9
Loan No. 5	882	6	8
		3,525	14 5
„ Amount set aside to Reserve Fund		600	0 0
„ Balance carried down		504	15 10
		£13,491	19 10
To Balance as per Balance Sheet		£697	12 2
		£697	12 2

A. E. HARTE, C.A. (S.A.), Chief Accountant.

Johannesburg,
31st March, 1936.

Account No. 10.

Commission.

UNDERTAKING.

ended 31st December, 1935. Cr.

By Sales of Electricity—									
Mining Supplies	£13,473	3	10						
„ Other Revenue				18	16	0			
				£13,491	19	10			
By Balance at 31st December, 1934, brought forward				£192	16	4			
„ Balance brought down				504	15	10			
				£697	12	2			

Referred to in our Report of 2nd May, 1936.

ALEX. AIKEN & CARTER, }
B. HALSEY, } Auditors.

Electricity Supply

RAND EXTENSION

Dr. Revenue Account for the Nine Months

General Expenses.			
To General Expenses (Insurance)		£5 13 6	
„ Head Office Administration and General Expenses ...		39 15 8	
„ Engineering Expenses		19 3 2	
		£64 12 4	
„ Interest		1,291 5 11	
„ Redemption Fund—Loan No. 6		720 5 11	
„ Amount set aside to Reserve Fund		280 11 1	
		£2,356 15 3	
		£2,356 15 3	

A. E. HARTE, C.A. (S.A.), Chief Accountant.

Johannesburg,
31st March, 1936.

Account No. 11.

Commission.

UNDERTAKING.

ended 31st December, 1935. Cr.

By Amount Recovered from The Victoria Falls and Transvaal Power Company, Limited	£2,356 15 3
	£2,356 15 3
	£2,356 15 3

Referred to in our Report of 2nd May, 1936.

ALEX. AIKEN & CARTER, }
B. HALSEY, } Auditors.

Electricity Supply
Incorporated under the
BALANCE SHEET at

Loan Capital		£12,250,000 0 0
Loan No. 1: Government of the Union of South Africa	£3,000,000 0 0	
Loan No. 2: Government of the Union of South Africa	5,000,000 0 0	
	£8,000,000 0 0	
<i>Less</i> —Repaid during 1933 and 1934	8,000,000 0 0	
Local Registered Stocks—		
Loan No. 3 4½ per cent. 1953/63	500,000 0 0	
Loan No. 4 4½ per cent. 1953	2,500,000 0 0	
Loan No. 5 3½ per cent. 1954/64	6,750,000 0 0	
Loan No. 6 3½ per cent. 1959/64	2,500,000 0 0	
Interest Accrued on Loan Capital		52,791 19 1
Loan—Umkomaas Town Board		10,380 0 0
Sundry Creditors and Credit Balances		390,327 8 2
Pension Fund		66,356 4 8
Redemption Fund		831,383 14 4
(As per Accounts Nos. 1 to 4)		
Loan No. 3	37,510 17 3	
Loan No. 4	482,691 18 11	
Loan No. 5	310,460 12 3	
Loan No. 6	720 5 11	
Sinking Fund		1,733 12 0
(Umkomaas Loan)		
Reserve Fund		786,220 16 7
(As per Account No. 5)		
Balance on Revenue Accounts		48,893 17 2
(As per Accounts Nos. 6 to 10)		
Natal Central Undertaking	15,455 2 0	
Witbank Undertaking	11,486 8 3	
Capetown Undertaking	13,171 1 8	
Durban Undertaking	8,083 13 1	
Sabie Undertaking	697 12 2	

NOTE.—In addition to the liabilities shown above, the Commission is committed to the extent of approximately £2,415,000 for expenditure on Capital Account; also £12,000 chargeable against Reserve Fund.

£14,438,087 12 0

H. J. VAN DER BIJL, Chairman.
A. E. HARTE, C.A. (S.A.), Chief Accountant.

Johannesburg,
31st March, 1936.

Commission.

Electricity Act, 1922.

31st DECEMBER, 1935.

Expenditure on Capital Account—		
(As per Schedule attached.)		
Land and Rights	£142,248 7 0	
Buildings and Civil Works	3,122,917 6 1	
Machinery and Plant	8,225,318 14 3	
		£11,490,484 7 4
<i>Less</i> —Net Revenue during Construction	132,724 1 7	
Provision made prior to Financial Adjustments Act, 1930, for repayment of advances, appropriated in reduction of Capital Expenditure	123,650 1 10	
		256,374 3 5
		11,234,110 3 11
		47,999 6 8
Movable Plant and Equipment (less depreciation)		
Workshop Equipment, Instruments, Tools and Loose Plant	28,224 12 5	
Transportation Equipment	2,704 19 11	
Furniture, Fixtures and Fittings	17,069 14 4	
Stores and Materials		120,968 5 4
Sundry Debtors and Debit Balances		128,227 3 4
Investments		542,653 11 10
Cash on deposit at interest	542,052 10 0	
Interest Accrued	601 1 10	
Cash on Current Account		621,196 19 8
Investment of Pension Fund		66,367 9 10
Amount invested in Municipal and Electricity Supply Commission Stocks	66,057 10 0	
Interest Accrued	309 19 10	
Investment of Redemption Fund		842,513 6 10
(As per Statements attached.)		
Loan No. 3	37,663 11 0	
Loan No. 4	481,744 14 5	
Loan No. 5	322,949 6 8	
Loan No. 6	155 14 9	
Investment of Sinking Fund		639 0 3
Amount invested in Municipal Stocks	625 0 0	
Interest Accrued	14 0 3	
Investment of Reserve Fund		833,412 4 4
Amount invested in Municipal and Electricity Supply Commission Stocks and Debentures guaranteed by the Government of the Union of South Africa	830,023 0 0	
Interest Accrued	3,389 4 4	
		£14,438,087 12 0

Referred to in our Report of 2nd May, 1936.

ALEX. AIKEN & CARTER, }
B. HALSEY, } Auditors.

Electricity Supply Commission.

SCHEDULE OF EXPENDITURE ON CAPITAL ACCOUNT to 31st December, 1935.

Expenditure in connection with Electricity Undertakings.	Total to 31st December, 1934.	Year ended 31st December, 1935.	Total to 31st December, 1935.
NATAL CENTRAL UNDERTAKING:			
Land and Rights	£18,519 6 2	Cr. £1,659 2 0	£16,860 4 2
Buildings and Civil Works	798,290 0 5	Cr. 43,113 18 10	755,176 1 7
Machinery and Plant	2,771,577 15 10	201,667 14 3	2,973,245 10 1
	3,588,387 2 5	156,894 13 5	3,745,281 15 10
Provision made prior to Financial Adjustments Act, 1930, for repay- ment of Advances, appropriated in reduction of Capital Expenditure ...	Cr. 123,650 1 10	—	Cr. 123,650 1 10
	£3,464,737 0 7	£156,894 13 5	£3,621,631 14 0
WITBANK UNDERTAKING:			
Land and Rights	£9,221 3 2	—	£9,221 3 2
Buildings and Civil Works	578,854 10 1	Cr. £1,285 6 6	577,569 3 7
Machinery and Plant	1,660,050 16 9	33,206 11 9	1,693,257 8 6
	2,248,126 10 0	31,921 5 3	2,280,047 15 3
Net Revenue during Construction ...	Cr. 103,458 8 4	—	Cr. 103,458 8 4
	£2,144,668 1 8	£31,921 5 3	£2,176,589 6 11
CAPETOWN UNDERTAKING:			
Land and Rights	£22,601 19 3	£131 14 1	£22,733 13 4
Buildings and Civil Works	675,625 5 6	12,120 8 8	687,745 14 2
Machinery and Plant	1,399,218 8 3	97,626 4 10	1,496,844 13 1
	2,097,445 13 0	109,878 7 7	2,207,324 0 7
Net Revenue during Construction ...	Cr. 5,019 2 1	—	Cr. 5,019 2 1
	£2,092,426 10 11	£109,878 7 7	£2,202,304 18 6
DURBAN UNDERTAKING:			
Land and Rights	£29,689 3 0	£132 19 4	£29,822 2 4
Buildings and Civil Works	350,866 16 6	3,398 13 2	354,265 9 8
Machinery and Plant	667,664 6 0	52,364 16 9	720,029 2 9
	1,048,220 5 6	55,896 9 3	1,104,116 14 9
Net Revenue during Construction ...	Cr. 15,121 15 4	—	Cr. 15,121 15 4
	£1,033,098 10 2	£55,896 9 3	£1,088,994 19 5
SABIE UNDERTAKING:			
Land and Rights	£510 0 0	—	£510 0 0
Buildings and Civil Works	65,458 1 8	—	65,458 1 8
Machinery and Plant	39,301 7 5	—	39,301 7 5
	105,269 9 1	—	105,269 9 1
Net Revenue during Construction ...	Cr. 9,124 15 10	—	Cr. 9,124 15 10
	£96,144 13 3	—	£96,144 13 3
KLIP UNDERTAKING:			
Land and Rights	£3 18 3	£3,104 15 0	£3,108 13 3
Buildings and Civil Works	74,980 16 0	525,323 5 6	600,304 1 6
Machinery and Plant	113,913 4 9	1,035,302 0 11	1,149,215 5 8
	£188,897 19 0	£1,563,730 1 5	£1,752,628 0 5
RAND EXTENSION UNDERTAKING:			
Land and Rights	—	£407 7 9	£407 7 9
Buildings and Civil Works	£771 1 6	Cr. 771 1 6	—
Machinery and Plant	49,461 15 0	103,963 11 9	153,425 6 9
	£50,232 16 6	£103,599 18 0	£153,832 14 6
HEAD OFFICE:			
Land	£59,785 3 0	Cr. £200 0 0	£59,585 3 0
Building	6,730 18 7	75,667 15 4	82,398 13 11
	£66,516 1 7	£75,467 15 4	£141,983 16 11
SUMMARY:			
Land and Rights	£140,330 12 10	£1,917 14 2	£142,248 7 0
Buildings and Civil Works	2,551,577 10 3	571,339 15 10	3,122,917 6 1
Machinery and Plant	6,701,187 14 0	1,524,131 0 3	8,225,318 14 3
	9,393,095 17 1	2,097,388 10 3	11,490,484 7 4
Net Revenue during Construction ...	Cr. 132,724 1 7	—	Cr. 132,724 1 7
Provision made prior to Financial Adjustments Act, 1930, for repay- ment of Advances, appropriated in reduction of Capital Expenditure ...	Cr. 123,650 1 10	—	Cr. 123,650 1 10
	£9,136,721 13 8	£2,097,388 10 3	£11,234,110 3 11

Electricity Supply Commission.

STATEMENT SHOWING DETAILS OF INVESTMENTS ON BEHALF OF THE
REDEMPTION FUND IN RESPECT OF THE £500,000 ELECTRICITY
SUPPLY COMMISSION 4½% LOCAL REGISTERED STOCK, 1953/63
(LOAN No. 3) AS AT 31st DECEMBER, 1935.

£34,200	Electricity Supply Commission 4½% Local Registered Stock, 1953/63	£37,525 19 2
	Interest Accrued	137 11 10
		£37,663 11 0

STATEMENT SHOWING DETAILS OF INVESTMENTS ON BEHALF OF THE
REDEMPTION FUND IN RESPECT OF THE £2,500,000 ELECTRICITY
SUPPLY COMMISSION 4½% LOCAL REGISTERED STOCK, 1953
(LOAN No. 4) AS AT 31st DECEMBER, 1935.

£315,000	Union of South Africa 4½% Local Registered Stock, 1953	£315,000 0 0
£51,200	South African Iron and Steel Industrial Corporation, Limited, 5% Guaranteed First Mortgage Registered Debentures, 1946/71	51,200 0 0
£113,750	Electricity Supply Commission 4½% Local Registered Stock, 1953	113,750 0 0
	Interest Accrued	1,794 14 5
		£481,744 14 5

STATEMENT SHOWING DETAILS OF INVESTMENTS ON BEHALF OF THE
REDEMPTION FUND IN RESPECT OF THE £6,750,000 ELECTRICITY
SUPPLY COMMISSION 3½% LOCAL REGISTERED STOCK, 1954/64
(LOAN No. 5) AS AT 31st DECEMBER, 1935.

£10,000	South African Iron and Steel Industrial Corporation, Limited, 5% Guaranteed First Mortgage Registered Debentures, 1946/71	£9,975 0 0
£42,750	Electricity Supply Commission 4½% Local Registered Stock, 1953/63	42,750 0 0
£272,900	Electricity Supply Commission 3½% Local Registered Stock, 1954/64	268,337 6 11
	Interest Accrued	1,886 19 9
		£322,949 6 8

STATEMENT SHOWING DETAILS OF INVESTMENTS ON BEHALF OF THE
REDEMPTION FUND IN RESPECT OF THE £2,500,000 ELECTRICITY
SUPPLY COMMISSION 3½% LOCAL REGISTERED STOCK, 1959/64
(LOAN No. 6) AS AT 31st DECEMBER, 1935.

£150	Electricity Supply Commission 3½% Local Registered Stock, 1959/64	£155 5 11
	Interest Accrued	8 10
		£155 14 9

Johannesburg,
31st March, 1936.

A. E. HARTE, C.A. (S.A.), Chief Accountant.

Electricity Supply

Dr. Redemption Fund Account for the
in respect of £2,500,000 Electricity Supply Commission

To	Balance as per Balance Sheet		£482,691 18 11
	Natal Central Undertaking	£3,051 8 3
	Witbank Undertaking	336,374 6 9
	Capetown Undertaking	6,940 18 3
	Durban Undertaking	112,844 3 11
	Sabie Undertaking	22,713 5 4
	Head Office	767 16 5
						£482,691 18 1

A. E. HARTE, C.A. (S.A.), Chief Accountant.

Johannesburg,
31st March, 1936.

Account No. 2.

Commission.

Year ended 31st December, 1935,
4½% Local Registered Stock 1953 (Loan No. 4).

Cr.

By	Balance at 31st December, 1934, brought forward		£396,067 0 3
	Witbank Undertaking	£285,557 7 7
	Capetown Undertaking	1,798 19 11
	Durban Undertaking	88,989 1 3
	Sabie Undertaking	19,147 7 5
	Head Office	574 4 1
	„ Amounts Contributed during the Year out of Revenue					68,400 9 5
	Natal Central Undertaking	3,002 16 7
	Witbank Undertaking	37,797 11 3
	Capetown Undertaking	4,988 16 10
	Durban Undertaking	19,801 7 8
	Sabie Undertaking	2,643 7 9
	Head Office	166 9 4
	„ Nett Proceeds of Sales of Fixed Property					518 6 5
	Witbank Undertaking	441 2 4
	Sabie Undertaking	77 4 1
	„ Profit on Sales and Redemption of Investments					32 15 0
	„ Interest Earned on Investments					17,673 7 10
	Interest Earned	19,699 15 8
	Less—Premium on Investments written off	2,026 7 10
	Natal Central Undertaking	48 11 8
	Witbank Undertaking	12,554 13 4
	Capetown Undertaking	152 18 6
	Durban Undertaking	4,046 7 10
	Sabie Undertaking	843 14 5
	Head Office	27 2 1
						£482,691 18 11

We hereby certify that we are satisfied both as to the correctness of the Accounts and Books of the Redemption Fund and as to the Maintenance of the Fund at the amount required by the Schedule to the Electricity Act, 1922, subject to the remarks contained in our report dated 2nd May, 1936.

ALEX. AIKEN & CARTER, }
B. HALSEY, } Auditors.

Electricity Supply

Dr. Redemption Fund Account for the
in respect of £2,500,000 Electricity Supply Commission

To Balance as per Balance Sheet	£720 5 11
Rand Extension Undertaking.	
	£720 5 11

A. E. HARTE, C.A. (S.A.), Chief Accountant.

Johannesburg,
31st March, 1936.

Commission.

Account No. 4.

Cr. Nine Months ended 31st December, 1935,
3½% Local Registered Stock, 1959/64 (Loan No. 6).

By Amount Contributed during the Year out of Revenue	£720 5 11
Rand Extension Undertaking.	
„ Interest Earned on Investments—	
Interest Earned	£0 3 5
<i>Less</i> —Appropriated in reduction of Premium on Investments	0 3 5
	£720 5 11

We hereby certify that we are satisfied both as to the correctness of the Accounts and Books of the Redemption Fund and as to the Maintenance of the Fund at the amount required by the Schedule to the Electricity Act, 1922, subject to the remarks contained in our report dated 2nd May, 1936.

ALEX. AIKEN & CARTER, }
 B. HALSEY, } Auditors.

Electricity Supply

Dr. Reserve Fund Account for the

To	Expenditure during the Year on Replacements and Betterment		£46,580 1 11
	Natal Central Undertaking	£11,399 12 7	
	Witbank Undertaking	16,243 2 9	
	Capetown Undertaking	13,348 15 4	
	Durban Undertaking	4,134 4 0	
	Sabie Undertaking	1,454 7 3	
	„ Balance as per Balance Sheet	786,220 16 7	
	Natal Central Undertaking	365,359 16 7	
	Witbank Undertaking	180,254 13 11	
	Capetown Undertaking	146,327 10 5	
	Durban Undertaking	86,482 8 10	
	Sabie Undertaking	7,514 3 10	
	Rand Extension Undertaking	282 3 0	
		£832,800 18 6	

Johannesburg,
31st March, 1936.

Account No. 5.

Commission.

Year ended 31st December, 1935. Cr.

By	Balance at 31st December, 1934, brought forward		£706,231 5 5
	Natal Central Undertaking	£326,834 6 9	
	Witbank Undertaking	164,523 8 0	
	Capetown Undertaking	134,673 10 0	
	Durban Undertaking	72,158 18 11	
	Sabie Undertaking	8,041 1 9	
	„ Amounts set aside during the Year as per Revenue Accounts	93,980 11 1	
	Natal Central Undertaking	35,000 0 0	
	Witbank Undertaking	24,000 0 0	
	Capetown Undertaking	19,000 0 0	
	Durban Undertaking	15,100 0 0	
	Sabie Undertaking	600 0 0	
	Rand Extension Undertaking	280 11 1	
	„ Other Contributions	548 17 6	
	„ Profit on Sales and Redemption of Investments	43 9 9	
	„ Interest Earned on Investments	31,996 14 9	
		£832,800 18 6	

A. E. HARTE, C.A. (S.A.), Chief Accountant.

Electricity Supply

NATAL CENTRAL

Dr. Revenue Account for the Year

Generation of Electricity.			
To Operation—			
Fuel	£66,694	17	2
Water, Oil, Waste and Stores	949	5	11
Salaries and Wages	15,017	4	10
Other Expenses	33	6	10
„ Maintenance—			
Stores	5,200	19	4
Salaries and Wages	8,608	18	6
Other Expenses	664	2	4
„ Electricity Purchased			
	£97,168	14	11
		203	7
			4
Distribution of Electricity.			
„ Operation and Maintenance—			
Stores	2,975	15	0
Salaries and Wages	13,066	3	2
Other Expenses	3,501	18	0
	19,543	16	2
General Expenses.			
„ Local Administration and Technical Management	7,124	1	11
„ General Expenses (including Maintenance of Quarters, Stores Expenses, Rates, Insurance, Pension Fund Contributions, etc.)	9,295	10	2
„ Head Office Administration and General Expenses	4,603	3	2
„ Engineering Expenses	2,436	7	1
	23,459	2	4
		140,375	0
		132,857	16
			6
„ Interest			
„ Redemption Fund—			
Loan No. 3	53	18	0
Loan No. 4	3,002	16	7
Loan No. 5	67,626	6	7
	70,683	1	2
„ Amount set aside to Reserve Fund		35,000	0
„ Balance carried down		5,563	19
	£384,479	17	8
To Balance as per Balance Sheet	£15,455	2	0
	£15,455	2	0

A. E. HARTE, C.A. (S.A.), Chief Accountant.

Johannesburg,
31st March, 1936.

Commission.

UNDERTAKING

ended 31st December, 1935.

Cr.

By Sales of Electricity—			
Traction Supplies	£315,242	18	10
Bulk Supplies	49,882	17	6
Industrial Supplies	12,964	5	6
Domestic and Lighting Supplies	5,234	1	10
	383,324	3	8
Less—Adjustment in respect of Industrial Supplies for the period prior to 31st December, 1934	3,273	11	3
„ Other Revenue			
	£380,050	12	5
		4,429	5
			3
	£384,479	17	8
By Balance at 31st December, 1934, brought forward	£9,891	2	9
„ Balance brought down	5,563	19	3
	£15,455	2	0

Referred to in our Report of 2nd May, 1936.

ALEX. AIKEN & CARTER,
B. HALSEY, } Auditors.

Electricity Supply

WITBANK

Dr. Revenue Account for the Year

Generation of Electricity.			
To Operation—			
Fuel	£75,753 5 0		
Water, Oil, Waste and Stores	6,343 10 11		
Salaries and Wages	24,174 19 11		
Other Expenses	1,183 5 2		
„ Maintenance—			
Stores	11,444 10 7		
Salaries and Wages	11,584 15 3		
Other Expenses	6,385 14 6		
		£136,870 1 4	
Distribution of Electricity.			
„ Operation and Maintenance—			
Stores	1,328 5 7		
Salaries and Wages	3,168 10 10		
Other Expenses	472 9 4		
		4,969 5 9	
General Expenses.			
„ Local Administration and Technical Management ...	7,516 17 6		
„ General Expenses (including Maintenance of Quarters, Stores Expenses, Rates, Insurance, Pension Fund Contributions, etc.)	6,186 7 2		
„ Administration, Engineering and General Expenses of Operating Party (The Victoria Falls and Transvaal Power Company, Limited)	6,908 15 4		
„ Head Office Administration and General Expenses ...	3,647 5 9		
„ Engineering Expenses	2,013 18 0		
		26,273 3 9	
		168,112 10 10	
„ Interest		93,367 14 8	
„ Redemption Fund—			
Loan No. 3	93 9 1		
Loan No. 4	37,797 11 3		
Loan No. 5	16,745 2 4		
		54,636 2 8	
„ Amount set aside to Reserve Fund		24,000 0 0	
„ Balance carried down		6,733 1 3	
		£346,849 9 5	
To Balance as per Balance Sheet		£11,486 8 3	
		£11,486 8 3	

A. E. HARTE, C.A. (S.A.), Chief Accountant.

Johannesburg,
31st March, 1936.

Commission.

UNDERTAKING.

ended 31st December, 1935.

Cr.

By Sales of Electricity—			
Bulk Supplies	£276,308 0 0		
Industrial Supplies	60,857 0 4		
Domestic and Lighting Supplies	5,227 8 10		
		£342,392 9 2	
„ Other Revenue		4,457 0 3	
		£346,849 9 5	
By Balance at 31st December, 1934, brought forward ...		£4,753 7 0	
„ Balance brought down		6,733 1 3	
		£11,486 8 3	

Referred to in our Report of 2nd May, 1936.

A. E. HARTE, C.A. (S.A.), Chief Accountant, }
ALEX. AIKEN & CARTER, } Auditors.
B. HALSEY, }

Electricity Supply

CAPETOWN

Dr. Revenue Account for the Year

Generation of Electricity.		£103,135 6 1
To Proportion of Pooled Costs
(As per attached Statement)		
Distribution of Electricity.		
„ Operation and Maintenance—		
Stores ...	£2,674 16 3	
Salaries and Wages ...	12,045 10 3	
Other Expenses ...	4,591 11 2	
	19,311 17 8	
General Expenses.		
„ Local Administration and Technical Management ...		
General Expenses (including Maintenance of Quarters, Stores Expenses, Rates, Insurance, Pension Fund Contributions, etc.) ...	6,984 15 7	
„ Head Office Administration and General Expenses ...	8,895 1 10	
„ Engineering Expenses ...	4,127 1 6	
	2,067 4 2	
	22,074 3 1	
Less—Charged to Pooled Costs ...	2,622 0 7	
	19,452 2 6	
	141,899 6 3	
„ Interest ...		
Redemption Fund—	86,831 6 11	
Loan No. 3 ...	11,320 13 11	
Loan No. 4 ...	4,988 16 10	
Loan No. 5 ...	34,166 3 1	
„ Amount set aside to Reserve Fund ...	19,000 0 0	
	156,307 0 9	
Less—Charged to Pooled Costs ...	36,526 6 4	
	119,780 14 5	
„ Balance carried down ...	14,811 12 11	
	£276,491 13 7	
To Balance at 31st December, 1934, brought forward ...	£1,640 11 3	
„ Balance as per Balance Sheet ...	13,171 1 8	
	£14,811 12 11	

A. E. HARTE, C.A. (S.A.), Chief Accountant.

Johannesburg,
31st March, 1936.

Commission.

UNDERTAKING.

ended 31st December, 1935. Cr.

By Sales of Electricity—		
Traction Supplies ...	£152,366 2 11	
Bulk Supplies ...	30,297 15 7	
Industrial Supplies ...	65,171 14 3	
Domestic and Lighting Supplies ...	26,101 8 6	
	£273,937 1 3	
„ Other Revenue ...	5,196 16 6	
Less—Credited to Pooled Costs ...	2,642 4 2	
	2,554 12 4	
By Balance brought down ...	£14,811 12 11	
	£14,811 12 11	

Referred to in our Report of 2nd May, 1936.

ALEX. AIKEN & CARTER, }
B. HALSEY, } Auditors.

Electricity Supply Commission

SALT RIVER AND DOCK

Dr. Statement of Pooled Costs for the Year ended

	Expenditure by Electricity Supply Commission.	Expenditure by City of Capetown.	Pooled Costs.
Pooled Generation of Electricity.			
To Operation and Maintenance—			
Fuel	£163,666 0 9	£37,282 18 3	£200,948 19 0
Water, Oil, Waste and Stores ...	7,420 9 5	2,572 11 7	9,993 1 0
Salaries and Wages	13,624 15 3	11,160 10 1	24,785 5 4
Other Expenses	13,876 4 4	3,967 5 2	17,843 9 6
„ General Expenses (including Stores Expenses, Rates, Insurance, Pension Fund Contributions, etc.) ...	2,622 0 7	2,041 3 1	4,663 3 8
„ Interest	19,385 13 0	—	19,385 13 0
„ Redemption Fund	15,133 18 9	—	15,133 18 9
„ Reserve Fund	2,006 14 7	—	2,006 14 7
	£237,735 16 8	£57,024 8 2	£294,760 4 10

Capetown,
31st March, 1936.

and City of Capetown.

ROAD POWER STATIONS.

31st December, 1935, and Allocation thereof. Cr.

By Allocation of Pooled Costs in terms of Agreement—			
Electricity Supply Commission		£103,135 6 1	
City of Capetown		188,541 12 1	
		£291,676 18 2	
„ Sundry Revenue—			
Electricity Supply Commission		2,642 4 2	
City of Capetown		441 2 6	
		3,083 6 8	
		£294,760 4 10	

E. P. GROVE,
for GEO. H. SWINGLER,
Manager of the Pooled Stations.

Electricity Supply

DURBAN

Dr. Revenue Account for the Year

Generation of Electricity.			
To Operation—			
Fuel	£79,518	7	3
Water, Oil, Waste and Stores	1,170	10	6
Salaries and Wages	13,604	14	2
Other Expenses	849	4	5
„ Maintenance—			
Stores	6,271	1	6
Salaries and Wages	11,239	14	4
Other Expenses	1,337	13	9
	£113,991	5	11
Distribution of Electricity.			
„ Operation and Maintenance—			
Stores	35	9	9
Salaries and Wages	186	10	9
Other Expenses	58	14	3
	280	14	9
General Expenses.			
„ Local Administration and Technical Management ...	4,067	12	0
„ General Expenses (including Maintenance of Quarters, Stores Expenses, Rates, Insurance, Pension Fund Contributions, etc.)	3,606	7	11
„ Investigations and Development Expenses	2,848	2	9
„ Head Office Administration and General Expenses ...	3,728	15	7
„ Engineering Expenses	1,919	11	0
	16,170	9	3
	£130,442	9	11
„ Interest	46,904	3	5
„ Redemption Fund—			
Loan No. 3	4,287	18	10
Loan No. 4	19,801	7	8
Loan No. 5	6,080	9	9
	30,169	16	3
„ Sinking Fund	128	13	9
„ Amount set aside to Reserve Fund	15,100	0	0
„ Balance carried down	4,126	17	0
	£226,872	0	4
To Balance as per Balance Sheet	£8,083	13	1
	£8,083	13	1

A. E. HARTE, C.A. (S.A.), Chief Accountant.

Johannesburg,
31st March, 1936.

Commission.

UNDERTAKING.

ended 31st December, 1935.

Cr.

By Sales of Electricity—			
Bulk Supplies	£224,238	1	0
Industrial Supplies	321	10	7
Domestic and Lighting Supplies	1,892	14	10
	£226,452	6	5
„ Other Revenue	419	13	11
	£226,872	0	4
By Balance at 31st December, 1934, brought forward ...	£3,956	16	1
„ Balance brought down	4,126	17	0
	£8,083	13	1

Referred to in our Report of 2nd May, 1936.

ALEX. AIKEN & CARTER,
B. HALSEY, } Auditors.

Electricity Supply

SABIE

Dr. Revenue Account for the Year

Generation of Electricity.			
To Operation—			
Water, Oil, Waste and Stores	£41	8	3
Salaries and Wages	1,787	16	5
„ Maintenance—			
Stores	724	8	4
Salaries and Wages	270	4	3
Other Expenses	137	14	3
	£2,961	11	6
Distribution of Electricity.			
„ Operation and Maintenance—			
Stores	37	0	1
Salaries and Wages	254	10	6
Other Expenses	78	3	10
	369	14	5
General Expenses.			
„ Local Administration and Technical Management ...	354	7	9
„ General Expenses (including Maintenance of Quarters, Insurance, Pension Fund Contributions, etc.) ...	207	6	0
„ Head Office Administration and General Expenses ...	474	0	9
„ Engineering Expenses	246	1	11
	1,281	16	5
	4,613	2	4
	4,248	7	3
„ Interest			
„ Redemption Fund—			
Loan No. 4	2,643	7	9
Loan No. 5	882	6	8
	3,525	14	5
„ Amount set aside to Reserve Fund	600	0	0
„ Balance carried down	504	15	10
	£13,491	19	10
To Balance as per Balance Sheet	£697	12	2
	£697	12	2

A. E. HARTE, C.A. (S.A.), Chief Accountant.

Johannesburg,
31st March, 1936.

Account No. 10.

Commission.

UNDERTAKING.

ended 31st December, 1935. Cr.

By Sales of Electricity—									
Mining Supplies	£13,473	3	10						
„ Other Revenue				18	16	0			
				£13,491	19	10			
By Balance at 31st December, 1934, brought forward	£192	16	4						
„ Balance brought down				504	15	10			
				£697	12	2			
				£697	12	2			

Referred to in our Report of 2nd May, 1936.

ALEX. AIKEN & CARTER, }
B. HALSEY, } Auditors.

Electricity Supply

RAND EXTENSION

Dr. Revenue Account for the Nine Months

		General Expenses.	
To General Expenses (Insurance)	£5 13 6	
„ Head Office Administration and General Expenses	39 15 8	
„ Engineering Expenses	19 3 2	
		£64 12 4	
„ Interest	1,291 5 11	
„ Redemption Fund—Loan No. 6	720 5 11	
„ Amount set aside to Reserve Fund	280 11 1	
		£2,356 15 3	

A. E. HARTE, C.A. (S.A.), Chief Accountant.

Johannesburg,
31st March, 1936.

Account No. 11.

Commission.

UNDERTAKING.

ended 31st December, 1935. Cr.

By Amount Recovered from The Victoria Falls and Transvaal Power Company, Limited	£2,356 15 3
		£2,356 15 3

Referred to in our Report of 2nd May, 1936.

ALEX. AIKEN & CARTER, }
B. HALSEY, } Auditors.

ANNEXURE B.

Annexure " B. "

Electricity Supply Commission.

STATEMENT No. 1.

Summary of principal plant and equipment installed at the Commission's several Undertakings as at 31st December, 1935:—

POWER STATIONS.

Colenso (Natal Central Undertaking) ...	} Steam
Witbank	
Congella (Durban Undertaking) ...	
Salt River (Capetown Undertaking) ...	
Sabie	} Hydro

BOILER PLANT.

Power Station.	No. of Boilers.	Normal Rating of each Boiler. Lbs. of steam per hour.	Total Rating of all Boilers. Lbs. of steam per hour.	Pressure. Lbs. per square inch.
Witbank	20	70,000	1,400,000	225
Colenso	10	60,000	600,000	290
Congella	{ 6 2	{ 60,000 100,000 }	560,000	{ 270 300 }
Salt River	{ 4 4	{ 60,000 100,000 }	640,000	{ 270 425 }
Totals	46		3,200,000	

GENERATING PLANT.

Power Station.	No. of Generators.	Normal Rating of Each Generator.		Total Rating of Generator House.		Voltage of Generation
		Kilo-watts.	Kilovolt Amperes.	Kilo-watts.	Kilovolt Amperes.	
Witbank	5	20,000	23,500	100,000	117,500	6,600
Colenso	5	12,000	13,500	60,000	67,500	6,600
Congella	{ 2 3 1	{ 6,000 12,000 20,000 }	{ 7,500 15,000 25,000 }	68,000	85,000	6,600
Salt River	{ 3 3	{ 10,000 20,000 }	{ 11,000 25,000 }	90,000	108,000	{ 12,000 33,000 }
Sabie	3	450	600	1,350	1,800	3,300
Totals	25			319,350	379,800	

TRANSMISSION LINES AND CABLES.

Undertaking.	88,000 volts. Route Miles.	33,000 volts. Route Miles.	21,000 volts. Route Miles.	12,000 volts. Route Miles.	6,600, 3,300 volts. Route Miles.	380/220 volts. Route Miles.	Total Route Miles.
Natal Central ...	353	32·5	—	17·2	55·5	23·6	481·8
Witbank ...	—	—	95·5	—	10·9	22·0	128·4
Capetown ...	—	210·1	—	28·5	62·3	87·5	388·4
Sabie ...	—	—	7·2	—	1·0	—	8·2
Totals ...	353	242·6	102·7	45·7	129·7	133·1	1006·8

TRANSFORMERS.

(Step-up and Step-down.)

Undertaking.	Capacity. Kilovolt Amperes.
Natal Central ...	154,790
Witbank ...	176,081
Capetown ...	71,525
Durban ...	6,970
Sabie ...	3,140
Total ...	412,506

CONVERTING SUB-STATIONS.

Type.	No. of Sub-stations.	No. of Units.	Rating Kilowatts.
Motor Generators ...	{ 1	1	150
	{ 13	23	46,000
Rotary Converters ...	6	12	24,000
Rectifiers ...	2	4	6,000
Totals ...	22	40	76,150

ANNEXURE B.

Annexure " B. "

Electricity Supply Commission.

STATEMENT No. 1.

Summary of principal plant and equipment installed at the Commission's several Undertakings as at 31st December, 1935:—

POWER STATIONS.

Colenso (Natal Central Undertaking) ...	} Steam
Witbank	
Congella (Durban Undertaking) ...	
Salt River (Capetown Undertaking) ...	
Sabie	

BOILER PLANT.

Power Station.	No. of Boilers.	Normal Rating of each Boiler. Lbs. of steam per hour.	Total Rating of all Boilers. Lbs. of steam per hour.	Pressure. Lbs. per square inch.
Witbank	20	70,000	1,400,000	225
Colenso	10	60,000	600,000	290
Congella	{ 6 2	{ 60,000 100,000 }	560,000	{ 270 300 }
Salt River	{ 4 4	{ 60,000 100,000 }	640,000	{ 270 425 }
Totals	46		3,200,000	

GENERATING PLANT.

Power Station.	No. of Generators.	Normal Rating of Each Generator.		Total Rating of Generator House.		Voltage of Generation
		Kilo-watts.	Kilovolt Amperes.	Kilo-watts.	Kilovolt Amperes.	
Witbank	5	20,000	23,500	100,000	117,500	6,600
Colenso	5	12,000	13,500	60,000	67,500	6,600
Congella	{ 2 3 1	{ 6,000 12,000 20,000 }	{ 7,500 15,000 25,000 }	68,000	85,000	6,600
Salt River	{ 3 3	{ 10,000 20,000 }	{ 11,000 25,000 }	90,000	108,000	{ 12,000 33,000 }
Sabie	3	450	600	1,350	1,800	3,300
Totals	25			319,350	379,800	

TRANSMISSION LINES AND CABLES.

Undertaking.	88,000 volts. Route Miles.	33,000 volts. Route Miles.	21,000 volts. Route Miles.	12,000 volts. Route Miles.	6,600, 3,300 volts. Route Miles.	380/220 volts. Route Miles.	Total Route Miles.
Natal Central ...	353	32·5	—	17·2	55·5	23·6	481·8
Witbank ...	—	—	95·5	—	10·9	22·0	128·4
Capetown ...	—	210·1	—	28·5	62·3	87·5	388·4
Sabie ...	—	—	7·2	—	1·0	—	8·2
Totals ...	353	242·6	102·7	45·7	129·7	133·1	1006·8

TRANSFORMERS.

(Step-up and Step-down.)

Undertaking.	Capacity. Kilovolt Amperes.
Natal Central ...	154,790
Witbank ...	176,081
Capetown ...	71,525
Durban ...	6,970
Sabie ...	3,140
Total ...	412,506

CONVERTING SUB-STATIONS.

Type.	No. of Sub-stations.	No. of Units.	Rating Kilowatts.
Motor Generators ...	{ 1	1	150
	{ 13	23	46,000
Rotary Converters ...	6	12	24,000
Rectifiers ...	2	4	6,000
Totals ...	22	40	76,150

Electricity Supply Commission.

STATEMENT No. 2.

Summary of principal plant and equipment in course of installation or on order as at 31st December, 1935:—

BOILER PLANT.

No. of Boilers.	Each.	Capacity in lbs. of steam per hour (normal rating).		Pressure, lbs. sq. inch.
		Total.		
2 ...	100,000	...	200,000	... 425
12 ...	180,000	...	2,160,000	... 390
Totals 14 ...	—	...	2,360,000	... —

GENERATING PLANT.

No. of Sets.	Capacity each, Kilowatts.	Total Capacity, Kilowatts.
6 ...	33,000	... 198,000
2 ...	7,000	... 14,000
Totals 8	212,000

TRANSMISSION LINE AND CABLES.

	88,000 Volts. Route Miles.	6,600 Volts. Route Miles.	380/220 Volts. Route Miles.	Totals.
Overhead Lines ...	145	19·5	5	169·5

TRANSFORMERS

(Step-up and Step-down).

Total capacity in course of installation or on order	Kilovolt Amperes. 210,233
--	-----	------------------------------

CONVERTING SUBSTATIONS.

Type	No. of Substations	No. of Sets.	Rating. Kilovolt Amperes
Mercury Arc Rectifiers ...	20	... 29	... 54,333

Electricity Supply Commission.

STATEMENT No. 3.

STATEMENT SHOWING THE PRICE OR RENT OF LAND OR RIGHTS OR INTERESTS IN OR OVER LAND OR OTHER PROPERTY ACQUIRED OR HIRED BY THE COMMISSION DURING THE YEAR 1935.

(See previous Annual Reports for Rights or Interests in or over Land Acquired prior to 1935.)

Area.	Farm or Lot.	District.	Title.	Purchase Price or Rental.	Acquired From.	Purpose for Which Required.		
Acres.	Roads.	Perches.						
NATAL CENTRAL UNDERTAKING.								
	Remainder Cotham of Salt River 815	Durban	Servitude of Right-of-Way in Perpetuity	£3 10 0	H. T. Walsh	Power Conductors		
	Remainder of Lamonts Vale	Pietermaritzburg	Servitude of Right-of-Way in Perpetuity	17 1 0	Estate J. F. M. Keytel	Power Conductors		
	Remainder of Uitkomst and Doornrug 852, and Sandpspruit 2111	Pietermaritzburg	Servitude of Right-of-Way in Perpetuity	19 18 0	Estate W. R. Blackhurst	Power Conductors		
3	Lot 21C of M1 Cato Manor 812/814	Durban	Servitude of Right-of-Way in Perpetuity	1 0 0	N. Reddy	Power Conductors		
34	C of Lot J.M.D. of Rosenus 3212	Glencoe	Freehold	800 0 0	J. M. Doyle	Staff Accommodation		
	Lot 16 of M1 of Cato Manor 812/814	Durban	Servitude of Right-of-Way in Perpetuity	4 0 0	Haniiah	Power Conductors		
	Lot 21A of M1 of Cato Manor 812/814	Durban	Servitude of Right-of-Way in Perpetuity	1 0 0	J. J. Binnett	Power Conductors		
	Lot 3 of 9 of M1 and 8 Lot 77 of M19 of Cato Manor 812/814	Durban	Servitude of Right-of-Way in Perpetuity	4 10 0	Hamsamy	Power Conductors		
	Lot 34 of Rooseveltfontein	Durban	Servitude of Right-of-Way in Perpetuity	1 0 0	M. Naicker	Power Conductors		
	8 of Lot M3 of Cato Manor	Durban	Servitude of Right-of-Way in Perpetuity	1 0 0	D. Sobrun	Power Conductors		
	Portion A and Remainder of Sub-division 1 of Lot 47 of Rooseveltfontein	Durban	Servitude of Right-of-Way in Perpetuity	12 7 0	C. B. Pillay	Power Conductors		
	E of 75 of Lot M19 of Cato Manor 812	Durban	Servitude of Right-of-Way in Perpetuity	3 10 0	C. Daliga	Power Conductors		
	Remainder of Sierkapspruit 907	Pietermaritzburg	Servitude of Right-of-Way in Perpetuity	23 4 0	E. D. M. Kingham	Power Conductors		
	D of 75 of Lot M19 of Cato Manor 812	Durban	Servitude of Right-of-Way in Perpetuity	1 0 0	C. Chellayah	Power Conductors		
	Subdivisions 8A, 8B and 16A of Vaalkop	Pietermaritzburg	Servitude of Right-of-Way in Perpetuity	0 0 0	M. A. and R. A. Pattenon	Power Conductors		
	A of Lot 35 of Rooseveltfontein 820	Durban	Servitude of Right-of-Way in Perpetuity	1 0 0	R. S. Nayager	Power Conductors		
	1 of 9 of M1 of Cato Manor 812/814	Durban	Servitude of Right-of-Way in Perpetuity	1 0 0	Annamma	Power Conductors		
	Remainder of Lot 32 of Rooseveltfontein	Durban	Servitude of Right-of-Way in Perpetuity	8 10 0	S. Chetty	Power Conductors		
	76 of M19 and 2 of 9 of M1 of Cato Manor 812/814	Durban	Servitude of Right-of-Way in Perpetuity	7 0 0	Narainsamy	Power Conductors		
	55 of Lot M1 of Cato Manor 812	Durban	Servitude of Right-of-Way in Perpetuity	1 0 0	Dorasamy	Power Conductors		
	C of Lot 35 of Rooseveltfontein 820	Durban	Servitude of Right-of-Way in Perpetuity	3 10 0	S. A. Naidoo	Power Conductors		
	Remainder of Attercliffe of Cato Manor 812	Durban	Servitude of Right-of-Way in Perpetuity	3 10 0	Muniamami	Power Conductors		
	C of Lot 41 of Rooseveltfontein	Durban	Servitude of Right-of-Way in Perpetuity	3 10 0	Dataram	Power Conductors		
	3 of D1 and 3 of Lot E of Rooseveltfontein	Durban	Servitude of Right-of-Way in Perpetuity	4 10 0	Soolramoney and Ramsay	Power Conductors		
	Krom Ellenbosg of Boschfontein 1023	Klip River	Servitude of Right-of-Way in Perpetuity	0 0 0	Estate C. J. Schoeman	Power Conductors		
	Lot 58B of Cato Manor 812	Durban	Servitude of Right-of-Way in Perpetuity	40 9 0	A. Hickagio	Power Conductors		
	1 of 74 of Lot M19 of Cato Manor 812	Durban	Servitude of Right-of-Way in Perpetuity	1 0 0	Marappan	Power Conductors		
	Remainder of 1A, 14A, 11 and 12A of Vaalkop and Dadelfontein 885	Pietermaritzburg	Servitude of Right-of-Way in Perpetuity	22 5 0	F. J. Hardman	Power Conductors		
1	2	32	Maggiesdale of Wagenvelds Kop 1053	Klip River	Freehold	98 0 0	J. S. Haumann	Sub-station Site Odewath
	Lot 23 of Sarnia of Salt River 815	Durban	Servitude of Right-of-Way in Perpetuity	6 0 0	Dhanwatiya	Power Conductors		
	Subdivisions M1 and M3 of Cato Manor 812	Durban	Servitude of Right-of-Way in Perpetuity	5 0 0	M. A. Mesher and B. A. Reddy	Power Conductors		
	Lot V Cotham of Salt River 815	Durban	Servitude of Right-of-Way in Perpetuity	3 10 0	L. U. Dickens	Power Conductors		
	21B of Lot M1 of Cato Manor 812/814	Durban	Servitude of Right-of-Way in Perpetuity	1 0 0	B. Simadhri	Power Conductors		
	Lot 8 of Uitkomst and Doornrug	Pietermaritzburg	Servitude of Right-of-Way in Perpetuity	1 5 0	M. A. R. Bloy	Power Conductors		
	B of Lot J of Cotham of Salt River	Durban	Servitude of Right-of-Way in Perpetuity	1 0 0	W. A. Luck	Power Conductors		
	A of Lot X of Uitkomst and Doornrug	Pietermaritzburg	Servitude of Right-of-Way in Perpetuity	5 8 0	J. H. Blase	Power Conductors		
	Remainder M19 of Cato Manor 812	Durban	Servitude of Right-of-Way in Perpetuity	1 0 0	Estate Meyrick Bennetts	Power Conductors		
	2 of V of Cotham of Salt River	Durban	Servitude of Right-of-Way in Perpetuity	100 0 0	A. E. C. Luck	Power Conductors		
	Remainder of Camperdown 1350	Pietermaritzburg	Servitude of Right-of-Way in Perpetuity	12 14 0	Vanderplank Trust	Power Conductors		
	Remainder of Lot 351 Town Lands	Pietermaritzburg	Servitude of Right-of-Way in Perpetuity	1 5 0	H. C. Mason	Power Conductors		
	Cotham of Underwood of Salt River 815	Durban	Servitude of Right-of-Way in Perpetuity	1 0 0	A. E. D. Scott	Power Conductors		
	E of Lot 35 and Lot 38 of Rooseveltfontein No. 820	Durban	Servitude of Right-of-Way in Perpetuity	120 0 0	H. A. O'Connor	Power Conductors		
	Lot F and Lot 2 of Sub-division D1 of Rooseveltfontein	Durban	Servitude of Right-of-Way in Perpetuity	7 0 0	N. Lakshmanah	Power Conductors		
	Remainder of Town Lands	Pietermaritzburg	Servitude of Right-of-Way in Perpetuity	63 0 0	Pietermaritzburg Corporation	Power Conductors		
	Remainder of Underwood of Salt River	Durban	Servitude of Right-of-Way in Perpetuity	100 0 0	G. North & Son, Ltd.	Power Conductors		
DURBAN UNDERTAKING.								
	Erf 20 of Scott Street, Scottburgh	Alexandra	Freehold	100 0 0	Scottburgh Electricity Supply Syndicate	Sub-station Site		
WITBANK UNDERTAKING.								
	Remainder of Joubertstru No. 16 and Witbank No. 61	Witbank	Servitude of Right-of-Way in Perpetuity	—	Witbank Colliery, Ltd.	Power Conductors		
	Portion V of Joubertstru 16	Witbank	Freehold	10 0 0	Witbank Colliery, Ltd.	Roadway to Power Station		
	Portion A of Eland-spruit 507	Witbank	Servitude of Right-of-Way in Perpetuity	35 0 0	H. de Clercq	Power Conductors		
	C of Portion 2 of Bleskloof 29	Witbank	Servitude of Right-of-Way in Perpetuity	10 0 0	E. M. Schikkerling	Power Conductors		
	Remainder of Krom-draai 30	Witbank	Servitude of Right-of-Way in Perpetuity	75 0 0	Estate Paul Henwood	Power Conductors		
CAPE TOWN UNDERTAKING.								
	Lot A2 of Zorqviet	Stellenbosch	Servitude of Right-of-Way in Perpetuity	—	K. P. Jameson	Power Conductors		
	Lot B of Parel Vallei	Stellenbosch	Servitude of Right-of-Way in Perpetuity	—	G. T. Voigt	Power Conductors		
	Hexenberg, Wagen Makers Valley	Paarl	Servitude of Right-of-Way in Perpetuity	40 0 0	J. P. Moller	Power Conductors		
	Portion FN of Parel Vallei	Stellenbosch	Servitude of Right-of-Way in Perpetuity	—	P. W. Voigt	Power Conductors		
SABIE UNDERTAKING.								
	Grootfontein No. 29	Pilgrims Rest	Servitude of Right-of-Way in Perpetuity	—	Government of Union of South Africa	Roadway to Power Station		

Electricity Supply Commission.

STATEMENT No. 2.

Summary of principal plant and equipment in course of installation or on order as at 31st December, 1935:—

BOILER PLANT.

No. of Boilers.	Each.	Capacity in lbs. of steam per hour (normal rating).		Pressure, lbs. sq. inch.
		Total.		
2	100,000	200,000	...	425
12	180,000	2,160,000	...	390
Totals 14	—	2,360,000	...	—

GENERATING PLANT.

No. of Sets.	Capacity each, Kilowatts.	Total Capacity, Kilowatts.
6	33,000	198,000
2	7,000	14,000
Totals 8	...	212,000

TRANSMISSION LINE AND CABLES.

	88,000 Volts. Route Miles.	6,600 Volts. Route Miles.	380/220 Volts. Route Miles.	Totals.
Overhead Lines ...	145	19·5	5	169·5

TRANSFORMERS

(Step-up and Step-down).

Total capacity in course of installation or on order	Kilovolt Amperes. 210,233
--	-----	------------------------------

CONVERTING SUBSTATIONS.

Type	No. of Substations	No. of Sets.	Rating. Kilovolt Amperes
Mercury Arc Rectifiers ...	20	29	54,333

Electricity Supply Commission.

STATEMENT No. 3.

STATEMENT SHOWING THE PRICE OR RENT OF LAND OR RIGHTS OR INTERESTS IN OR OVER LAND OR OTHER PROPERTY ACQUIRED OR HIRED BY THE COMMISSION DURING THE YEAR 1935.

(See previous Annual Reports for Rights or Interests in or over Land Acquired prior to 1935.)

Area.	Farm or Lot.	District.	Title.	Purchase Price or Rental.	Acquired From.	Purpose for Which Required.		
Acres.	Roads.	Perches.						
NATAL CENTRAL UNDERTAKING.								
	Remainder Cotham of Salt River 815	Durban	Servitude of Right-of-Way in Perpetuity	£3 10 0	H. T. Walsh	Power Conductors		
	Remainder of Lamonts Vale	Pietermaritzburg	Servitude of Right-of-Way in Perpetuity	17 1 0	Estate J. F. M. Keytel	Power Conductors		
	Remainder of Uitkomst and Doornrug 852, and Sandpspruit 2111	Pietermaritzburg	Servitude of Right-of-Way in Perpetuity	19 18 0	Estate W. R. Blackhurst	Power Conductors		
3	Lot 21C of M1 Cato Manor 812/814	Durban	Servitude of Right-of-Way in Perpetuity	1 0 0	N. Reddy	Power Conductors		
34	C of Lot J.M.D. of Rosenus 3212	Glencoe	Freehold	800 0 0	J. M. Doyle	Staff Accommodation		
	Lot 16 of M1 of Cato Manor 812/814	Durban	Servitude of Right-of-Way in Perpetuity	4 0 0	Haniiah	Power Conductors		
	Lot 21A of M1 of Cato Manor 812/814	Durban	Servitude of Right-of-Way in Perpetuity	1 0 0	J. J. Binnett	Power Conductors		
	Lot 3 of 9 of M1 and 8 Lots 77 of M29 of Cato Manor 812/814	Durban	Servitude of Right-of-Way in Perpetuity	4 10 0	Hamsamy	Power Conductors		
	Lot 34 of Rooseveltfontein	Durban	Servitude of Right-of-Way in Perpetuity	1 0 0	M. Naicker	Power Conductors		
	8 of Lot M3 of Cato Manor	Durban	Servitude of Right-of-Way in Perpetuity	1 0 0	D. Sobrun	Power Conductors		
	Portion A and Remainder of Sub-division 1 of Lot 47 of Rooseveltfontein	Durban	Servitude of Right-of-Way in Perpetuity	12 7 0	C. B. Pillay	Power Conductors		
	E of 75 of Lot M29 of Cato Manor 812	Durban	Servitude of Right-of-Way in Perpetuity	3 10 0	C. Daliga	Power Conductors		
	Remainder of Sierkapspruit 907	Pietermaritzburg	Servitude of Right-of-Way in Perpetuity	23 4 0	E. D. M. Kingham	Power Conductors		
	D of 75 of Lot M29 of Cato Manor 812	Durban	Servitude of Right-of-Way in Perpetuity	1 0 0	C. Chellayah	Power Conductors		
	Subdivisions 8A, 9A and 16A of Vaalkop	Pietermaritzburg	Servitude of Right-of-Way in Perpetuity	0 0 0	M. A. and R. A. Pattenon	Power Conductors		
	A of Lot 35 of Rooseveltfontein 820	Durban	Servitude of Right-of-Way in Perpetuity	1 0 0	R. S. Nayager	Power Conductors		
	1 of 9 of M1 of Cato Manor 812/814	Durban	Servitude of Right-of-Way in Perpetuity	1 0 0	Annamma	Power Conductors		
	Remainder of Lot 32 of Rooseveltfontein	Durban	Servitude of Right-of-Way in Perpetuity	8 10 0	S. Chetty	Power Conductors		
	76 of M29 and 2 of 9 of M1 of Cato Manor 812/814	Durban	Servitude of Right-of-Way in Perpetuity	7 0 0	Narainsamy	Power Conductors		
	55 of Lot M1 of Cato Manor 812	Durban	Servitude of Right-of-Way in Perpetuity	1 0 0	Dorasamy	Power Conductors		
	C of Lot 35 of Rooseveltfontein 820	Durban	Servitude of Right-of-Way in Perpetuity	3 10 0	S. A. Naidoo	Power Conductors		
	Remainder of Atercliffe of Cato Manor 812	Durban	Servitude of Right-of-Way in Perpetuity	3 10 0	Muniamami	Power Conductors		
	C of Lot 41 of Rooseveltfontein	Durban	Servitude of Right-of-Way in Perpetuity	3 10 0	Dataram	Power Conductors		
	3 of D1 and 3 of Lot E of Rooseveltfontein	Durban	Servitude of Right-of-Way in Perpetuity	4 10 0	Soolramoney and Ramsay	Power Conductors		
	Krom Ellenbosg of Boschfontein 1023	Klip River	Servitude of Right-of-Way in Perpetuity	0 0 0	Estate C. J. Schoeman	Power Conductors		
	Lot 58B of Cato Manor 812	Durban	Servitude of Right-of-Way in Perpetuity	40 9 0	A. Hickagio	Power Conductors		
	1 of 74 of Lot M29 of Cato Manor 812	Durban	Servitude of Right-of-Way in Perpetuity	1 0 0	Marappan	Power Conductors		
	Remainder of 1A, 14A, 11 and 12A of Vaalkop and Dadelfontein 885	Pietermaritzburg	Servitude of Right-of-Way in Perpetuity	22 5 0	F. J. Hardman	Power Conductors		
1	2	32	Maggiesdale of Wagenvelds Kop 1053	Klip River	Freehold	98 0 0	J. S. Haumann	Sub-station Site Odewath
	Lot 23 of Sarnia of Salt River 815	Durban	Servitude of Right-of-Way in Perpetuity	6 0 0	Dhanwatiya	Power Conductors		
	Subdivisions M1 and M3 of Cato Manor 812	Durban	Servitude of Right-of-Way in Perpetuity	5 0 0	M. A. Mesher and B. A. Reddy	Power Conductors		
	Lot V Cotham of Salt River 815	Durban	Servitude of Right-of-Way in Perpetuity	3 10 0	L. U. Dickens	Power Conductors		
	21B of Lot M1 of Cato Manor 812/814	Durban	Servitude of Right-of-Way in Perpetuity	1 0 0	B. Simadhri	Power Conductors		
	Lot 8 of Uitkomst and Doornrug	Pietermaritzburg	Servitude of Right-of-Way in Perpetuity	1 5 0	M. A. R. Bloy	Power Conductors		
	B of Lot J of Cotham of Salt River	Durban	Servitude of Right-of-Way in Perpetuity	1 0 0	W. A. Luck	Power Conductors		
	A of Lot X of Uitkomst and Doornrug	Pietermaritzburg	Servitude of Right-of-Way in Perpetuity	5 8 0	J. H. Blase	Power Conductors		
	Remainder M29 of Cato Manor 812	Durban	Servitude of Right-of-Way in Perpetuity	1 0 0	Estate Meyrick Bennetts	Power Conductors		
	2 of V of Cotham of Salt River	Durban	Servitude of Right-of-Way in Perpetuity	100 0 0	A. E. C. Luck	Power Conductors		
	Remainder of Camperdown 1350	Pietermaritzburg	Servitude of Right-of-Way in Perpetuity	12 14 0	Vanderplank Trust	Power Conductors		
	Remainder of Lot 351 Town Lands	Pietermaritzburg	Servitude of Right-of-Way in Perpetuity	1 5 0	H. C. Mason	Power Conductors		
	Cotham of Underwood of Salt River 815	Durban	Servitude of Right-of-Way in Perpetuity	1 0 0	A. E. D. Scott	Power Conductors		
	E of Lot 35 and Lot 38 of Rooseveltfontein No. 820	Durban	Servitude of Right-of-Way in Perpetuity	120 0 0	H. A. O'Connor	Power Conductors		
	Lot F and Lot 2 of Sub-division D1 of Rooseveltfontein	Durban	Servitude of Right-of-Way in Perpetuity	7 0 0	N. Lakshannah	Power Conductors		
	Remainder of Town Lands	Pietermaritzburg	Servitude of Right-of-Way in Perpetuity	63 0 0	Pietermaritzburg Corporation	Power Conductors		
	Remainder of Underwood of Salt River	Durban	Servitude of Right-of-Way in Perpetuity	100 0 0	G. North & Son, Ltd.	Power Conductors		
DURBAN UNDERTAKING.								
	Erf 20 of Scott Street, Scottburgh	Alexandra	Freehold	100 0 0	Scottburgh Electricity Supply Syndicate	Sub-station Site		
WITBANK UNDERTAKING.								
	Remainder of Joubertstrat No. 16 and Witbank No. 61	Witbank	Servitude of Right-of-Way in Perpetuity	—	Witbank Colliery, Ltd.	Power Conductors		
	Portion V of Joubertstrat 16	Witbank	Freehold	10 0 0	Witbank Colliery, Ltd.	Roadway to Power Station		
	Portion A of Eland-spruit 507	Witbank	Servitude of Right-of-Way in Perpetuity	35 0 0	H. de Clercq	Power Conductors		
	C of Portion 2 of Bleskloof 29	Witbank	Servitude of Right-of-Way in Perpetuity	10 0 0	E. M. Schikkerling	Power Conductors		
	Remainder of Krom-draai 30	Witbank	Servitude of Right-of-Way in Perpetuity	75 0 0	Estate Paul Henwood	Power Conductors		
CAPE TOWN UNDERTAKING.								
	Lot A2 of Zorqviet	Stellenbosch	Servitude of Right-of-Way in Perpetuity	—	K. P. Jameson	Power Conductors		
	Lot B of Parel Vallei	Stellenbosch	Servitude of Right-of-Way in Perpetuity	—	G. T. Voigt	Power Conductors		
	Hexenberg, Wagen Makers Valley	Paarl	Servitude of Right-of-Way in Perpetuity	40 0 0	J. P. Moller	Power Conductors		
	Portion FN of Parel Vallei	Stellenbosch	Servitude of Right-of-Way in Perpetuity	—	P. W. Voigt	Power Conductors		
SABIE UNDERTAKING.								
	Grootfontein No. 29	Pilgrims Rest	Servitude of Right-of-Way in Perpetuity	—	Government of Union of South Africa	Roadway to Power Station		

ANNEXURE C.

MUNICIPAL ELECTRICITY SUPPLY SCHEMES.

In terms of Section 38 of the Electricity Act, the Commission is required to report to Administrators of the various provinces, upon the proposals of Urban Local Authorities to establish electricity undertakings or to enlarge existing undertakings, and up to 31st December, 1935, 289 reports and 128 supplementary reports and reports upon tenders had been submitted.

During the year 1935, the following schemes were dealt with by the Commission :—

CAPE.

New Schemes.	Extension Schemes.	Tenders.
Aberdeen	Fort Beaufort	Aberdeen
Griquatown	Hermanus	George
Hoopstad	Port Elizabeth	Griquatown
Ladismith	Somerset East	Port Elizabeth
Laingsburg.	Upington.	Worcester
Prieska	Victoria West	

TRANSVAAL.

Messina.	Johannesburg
	Klerksdorp
	Louis Trichardt
	Pietersburg
	Randfontein
	Wolmaransstad

NATAL.

Utrecht

ORANGE FREE STATE.

Bloemfontein
Lindley
Wepener

SOUTH-WEST AFRICA.

Windhoek

Of the total of 289 Municipal electricity supply schemes reported upon by the Commission up to the end of the year 1935, 117 were new schemes.

ANNEXURE D.

Electricity Supply Commission.

STATEMENT No. 4.

Units sold to all consumers during the past ten years.

Year.	Natal Central Undertaking.	Witbank Undertaking.	Capetown Undertaking.	Durban Undertaking.	Sabie Undertaking.	Total.
1926 ...	719,666	160,031,213	280,242	—	727,401	161,758,522
1927 ...	104,206,235	439,061,722	5,811,836	—	1,938,940	551,018,733
1928 ...	114,213,037	464,267,213	31,038,697	15,563,460	2,829,888	627,912,295
1929 ...	123,911,774	543,091,138	47,945,690	78,873,576	3,176,173	796,998,351
1930 ...	117,075,484	618,951,364	49,772,016	99,228,000	4,585,060	889,611,924
1931 ...	101,131,880	603,359,113	52,109,958	103,899,765	6,585,553	867,086,269
1932 ...	100,292,933	610,285,123	64,268,873	109,808,223	6,080,010	890,735,162
1933 ...	109,186,538	639,368,114	100,685,629	118,538,312	6,349,651	974,128,244
1934 ...	124,898,129	648,245,530	73,583,974	131,104,182	7,329,679	985,161,494
1935 ...	154,278,600	727,888,529	80,020,511	149,874,024	7,181,282	1,119,242,946

STATEMENT No. 5.

Statistics relating to the Commission's Undertakings for the year 1935.

TABLE No. 1.

Power Station Statistics.

Power Station	Units Generated.	Maximum Half-hourly Demand. Kilowatts (Sent Out).	Load Factor on Units Sent Out. %
Colenso ...	171,704,260	33,400	55.3
Witbank ...	772,981,430	103,905 (Hour)	79.9
Salt River ...	223,276,002	44,680	54.4
Congella ...	159,146,350	40,333	42.4
Sabie ...	7,547,700	1,200	71.2

ANNEXURE D.

Electricity Supply Commission.

STATEMENT No. 4.

Units sold to all consumers during the past ten years.

Year.	Natal Central Undertaking.	Witbank Undertaking.	Capetown Undertaking.	Durban Undertaking.	Sabie Undertaking.	Total.
1926 ...	719,666	160,031,213	280,242	—	727,401	161,758,522
1927 ...	104,206,235	439,061,722	5,811,836	—	1,938,940	551,018,733
1928 ...	114,213,037	464,267,213	31,038,697	15,563,460	2,829,888	627,912,295
1929 ...	123,911,774	543,091,138	47,945,690	78,873,576	3,176,173	796,998,351
1930 ...	117,075,484	618,951,364	49,772,016	99,228,000	4,585,060	889,611,924
1931 ...	101,131,880	603,359,113	52,109,958	103,899,765	6,585,553	867,086,269
1932 ...	100,292,933	610,285,123	64,268,873	109,808,223	6,080,010	890,735,162
1933 ...	109,186,538	639,368,114	100,685,629	118,538,312	6,349,651	974,128,244
1934 ...	124,898,129	648,245,530	73,583,974	131,104,182	7,329,679	985,161,494
1935 ...	154,278,600	727,888,529	80,020,511	149,874,024	7,181,282	1,119,242,946

STATEMENT No. 5.

Statistics relating to the Commission's Undertakings for the year 1935.

TABLE No. 1.

Power Station Statistics.

Power Station	Units Generated.	Maximum Half-hourly Demand. Kilowatts (Sent Out).	Load Factor on Units Sent Out. %
Colenso ...	171,704,260	33,400	55.3
Witbank ...	772,981,430	103,905 (Hour)	79.9
Salt River ...	223,276,002	44,680	54.4
Congella ...	159,146,350	40,333	42.4
Sabie ...	7,547,700	1,200	71.2

STATEMENT No. 6.

Particulars of coal used at the Commission's Steam-raising Power Stations.

Power Station.	COAL CONSUMED.			B.T.U.'s.		Thermal Efficiency on Units Sent Out.
	Tons. (2,000 lbs.)	Per Unit Generated. Lbs.	Per Unit Sent Out. Lbs.	Average per lb. of Coal.	Average per Unit Sent Out.	
Colenso	123,677	1.44	1.53	12,680	19,400	17.6%
Witbank	677,773	1.75	1.86	11,120	20,690	16.5%
Salt River	129,408	1.16	1.22	13,290	16,200	21.1%
Congella	105,243	1.32	1.41	12,590	17,700	19.3%

Average Cost per Ton (2,000 lbs.).

	1935.	1934.	1933.	1932.	1931.	1930.
Colenso	10/9	10/9	10/7	9/10	8/3	8/-
Witbank	2/3	2/3	2/4	2/4	2/2	2/2
Salt River	25/4	25/6	25/4	24/11	23/4	23/5
Congella	15/-	15/4	15/6	15/4	14/2	13/2

STATEMENT No. 7.

Particulars of Staff employed.

The staff employed by the Commission as at 31st December, 1935, as compared with the previous year was as follows:—

	1935.	1934.	Difference.
Europeans	443	422	+ 21
Non-Europeans	335	284	+ 51
Totals	778	706	+ 72

STATEMENT No. 6.

Particulars of coal used at the Commission's Steam-raising Power Stations.

Power Station.	COAL CONSUMED.			B.T.U.'s.		Thermal Efficiency on Units Sent Out.
	Tons. (2,000 lbs.)	Per Unit Generated. Lbs.	Per Unit Sent Out. Lbs.	Average per lb. of Coal.	Average per Unit Sent Out.	
Colenso	123,677	1.44	1.53	12,680	19,400	17.6%
Witbank	677,773	1.75	1.86	11,120	20,690	16.5%
Salt River	129,408	1.16	1.22	13,290	16,200	21.1%
Congella	105,243	1.32	1.41	12,590	17,700	19.3%

Average Cost per Ton (2,000 lbs.).

	1935.	1934.	1933.	1932.	1931.	1930.
Colenso	10/9	10/9	10/7	9/10	8/3	8/-
Witbank	2/3	2/3	2/4	2/4	2/2	2/2
Salt River	25/4	25/6	25/4	24/11	23/4	23/5
Congella	15/-	15/4	15/6	15/4	14/2	13/2

STATEMENT No. 7.

Particulars of Staff employed.

The staff employed by the Commission as at 31st December, 1935, as compared with the previous year was as follows:—

	1935.	1934.	Difference.
Europeans	443	422	+ 21
Non-Europeans	335	284	+ 51
Totals	778	706	+ 72