



Shift performance,
grow sustainably

Interim Integrated Report
for the six months ended 30 September 2013



Contents



■ Key facts and figures	2
■ Eskom's business model	4
■ About this report	8
■ Business overview	12
Shareholder compact	18
■ Performance on strategic objectives	22
Integrated Resource Plan 2010 (IRP 2010)	23
MYPD 3 price determination	24
Becoming a high-performance organisation	26
Leading and partnering to keep the lights on	35
Reducing Eskom's environmental footprint and pursuing low-carbon growth opportunities	44
Securing future resource requirements, mandate and the enabling environment	47
Implementing coal haulage and the road-to-rail migration plan	49
Pursuing private-sector participation	50
Transformation	51
Ensuring financial sustainability	55
■ Group interim financial results	66
■ Appendices	72
Abbreviations, acronyms and glossary	IBC
Contact details	IBC

Navigation icons



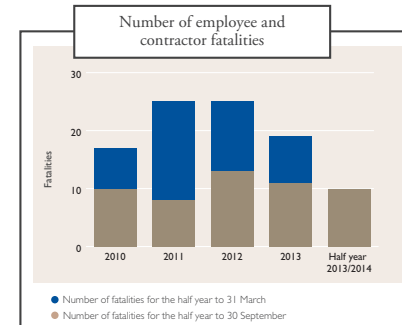
1. Becoming a high-performance organisation
2. Leading and partnering to keep the lights on
3. Reducing Eskom's environmental footprint and pursuing low-carbon growth opportunities
4. Securing future resource requirements
5. Implementing coal haulage and the road-to-rail migration plan
6. Pursuing private-sector participation
7. Transformation
8. Ensuring Eskom's financial sustainability

The navigation icons above are used throughout the report to link material items, performance and key performance indicators to strategic objectives.

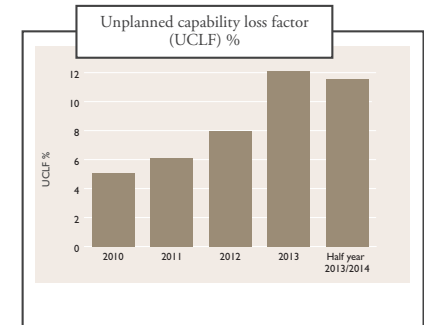


Key facts and figures

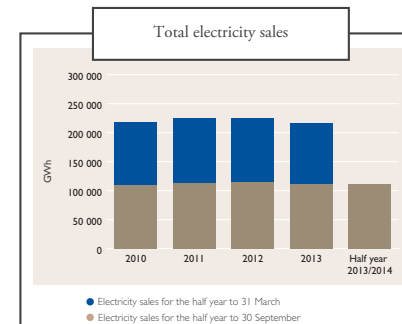
Key facts and figures



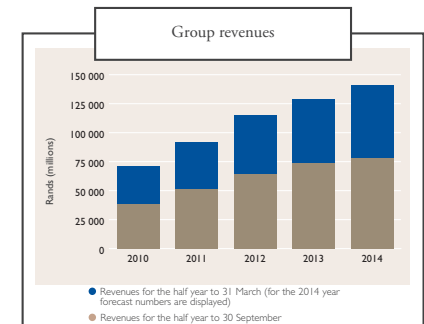
Safety remains a priority for 2013/14.



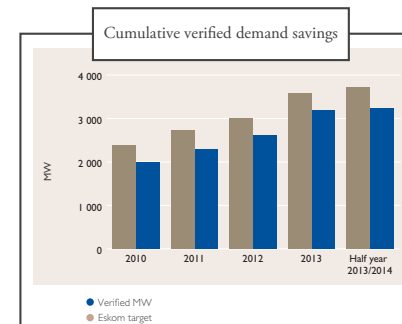
The generation sustainability strategy has been implemented to address the deterioration in Eskom's plant health – UCLF increased from 5.1% in March 2008 to 12.12% in March 2013 – it has since improved to 11.53%.



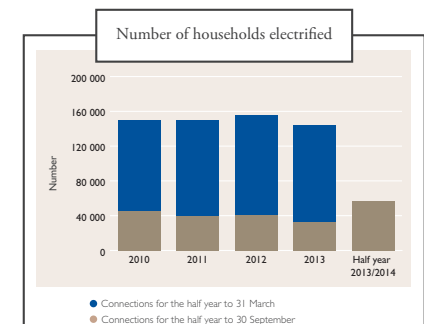
The sales of electricity for the six months to 30 September 2013 amounted to 110 659 giga-watt hours (GWh); this represents a decrease of 0.1% against the comparative period.



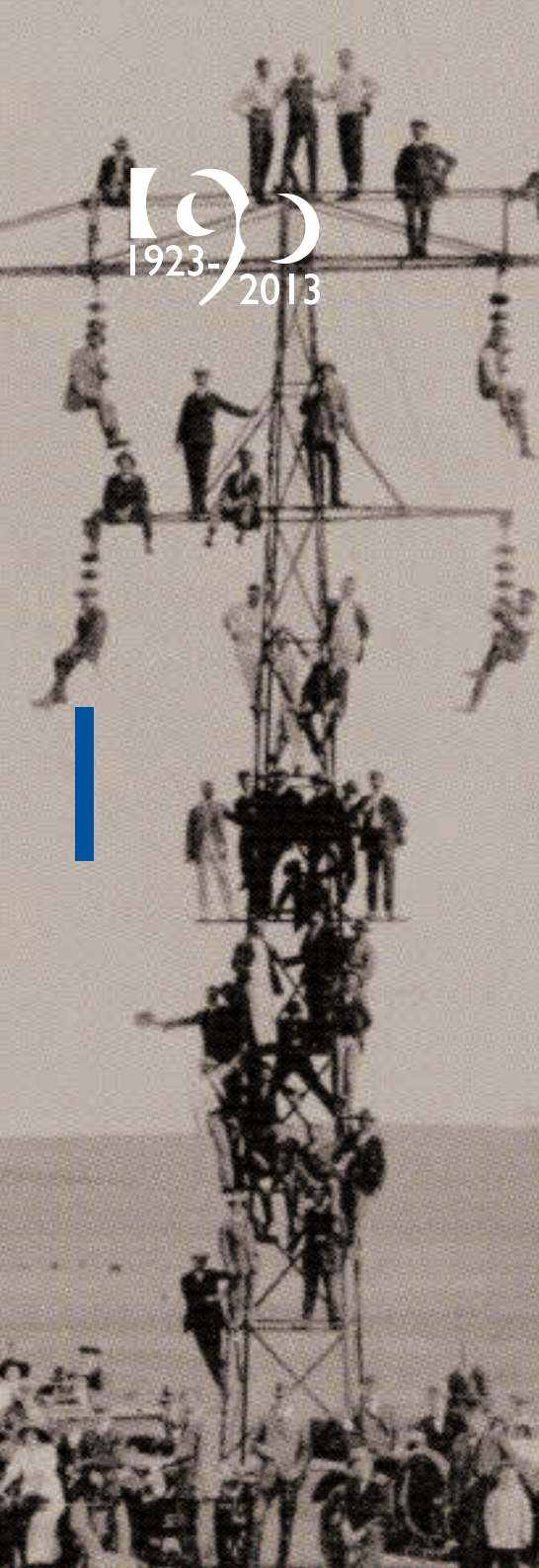
Eskom's business is seasonal in nature, whereby sales decrease in the summer months, average tariffs are lower and the majority of repairs and maintenance is executed.



Since 2004/05, Eskom's demand-side management interventions have 'freed up' 3 706MW or more than six 600MW generations, the equivalent to that of a typical power station.



Approximately 4.4 million households have been electrified by Eskom within its supply area since 1991, when the electrification programme started.



1923-2013

Eskom's business model

Eskom's business model

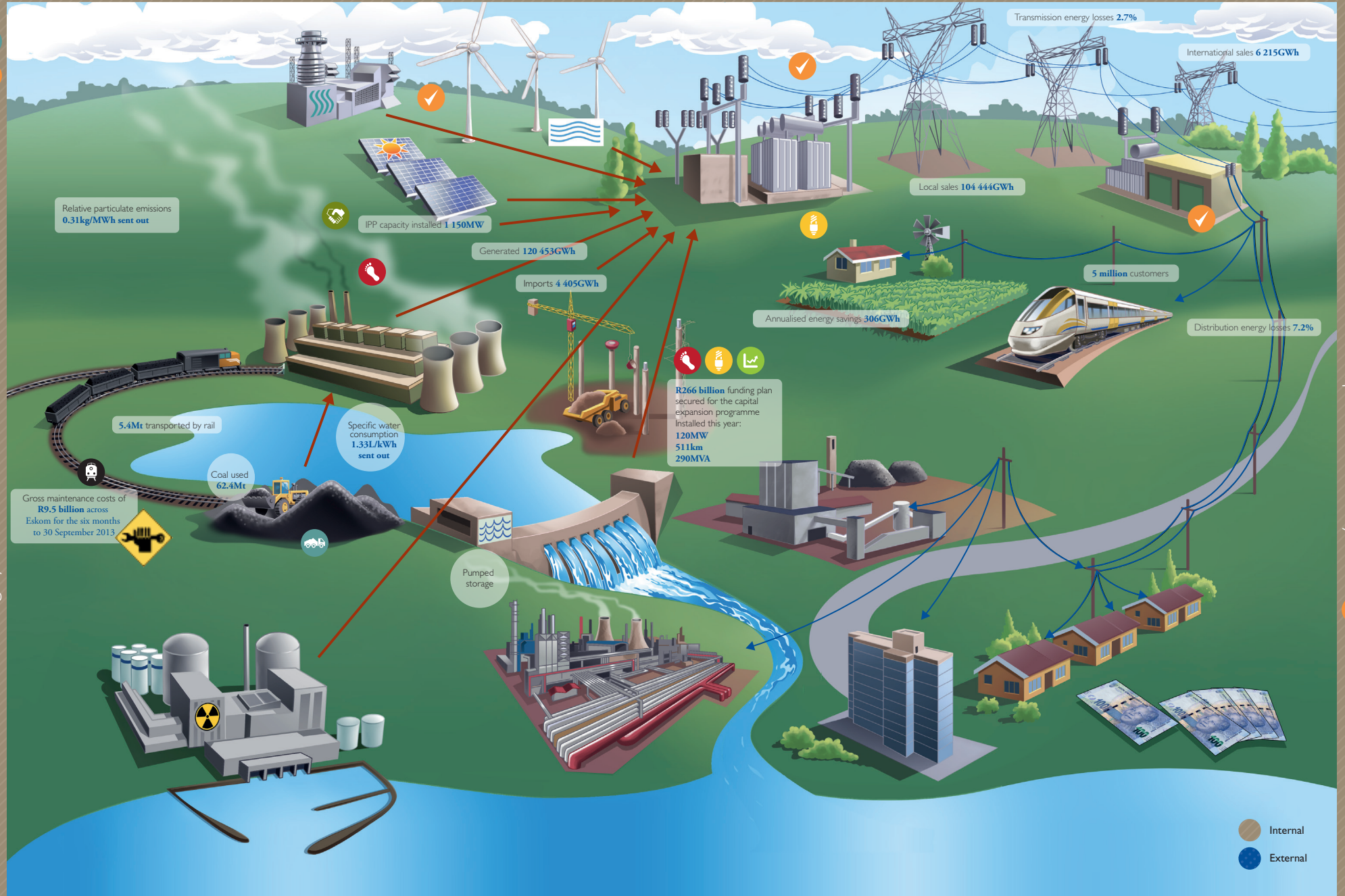
The business model diagram outlines Eskom's business model and how it creates value. It includes the inputs in terms of the 'six capitals' and its business activities, as well as its outputs and outcomes. Further details of Eskom's business model are available online at <http://integratedreport.eskom.co.za/001>.



Routine maintenance at the Palmiet pumped-storage scheme near Grabouw in the Western Cape

Economic and social climate

Technology ✓



Leadership and governance ✓

Shareholder mandate

About this report

About this report

The September 2013 interim integrated report sets out a contextual review of Eskom's overall performance for the period 1 April 2013 to 30 September 2013. This report should be read in conjunction with the integrated report for the year ended 31 March 2013 as not all the issues raised in that report are necessarily addressed in this interim report.

Structure of this report

This report addresses performance in terms of Eskom's eight strategic objectives, as set out in the corporate plan. This structure reflects the manner in which Eskom manages its business and allows for enhanced connectivity of information within the report.

The report is structured as follows:

The business overview serves as an executive summary, which primarily sets out the achievements and challenges faced in the reporting period, future focus areas and changes to Eskom's risk profile.

The shareholder compact sets out Eskom's performance against key performance indicators as set by the shareholder.

About the company provides an overview of Eskom's primary business and client base as well as its legal and operating structure. This section also outlines Eskom's purpose, values and strategic objectives and addresses changes to the composition of the board and Executive Management committee.

Performance on strategic objectives details Eskom's performance in terms of its eight strategic objectives. It also discusses two important material items – the Integrated Resource Plan 2010 (IRP 2010) and the tariff determination for the next five years (the Multi Year Price Determination three, or MYPD 3) – that have a bearing on all eight strategic objectives.

The eight strategic objectives are:

- ✓ Becoming a high-performance organisation
- 🏠 Leading and partnering to keep the lights on
- 🌱 Reducing Eskom's environmental footprint and pursuing low-carbon growth opportunities

- 👤 Securing future resource requirements
- 🚂 Implementing coal haulage and the road-to-rail migration plan
- 🌱 Pursuing private-sector participation
- 👤 Transformation
- 📊 Ensuring financial sustainability

Group interim financial results provide an extract from the condensed interim financial statements for the six months ended 30 September 2013. The condensed group interim financial statements, with the independent auditors' review opinion, are available at <http://integratedreport.eskom.co.za/002>.

Appendices include links to a list of abbreviations and acronyms, and a glossary. Eskom's contact details are also included.

While references to supplemental information are provided throughout this report the following reports can be found at <http://integratedreport.eskom.co.za/003>:

- Eskom's integrated report for the year ended 31 March 2013
- Eskom's annual financial statements for the year ended 31 March 2013
- Eskom's supplementary and divisional report for the year ended 31 March 2013, which provides detailed performance information from a divisional perspective
- The Eskom Development Foundation report detailing Eskom's corporate social investment activities for 2013
- The Eskom Factor report detailing Eskom's broader impact on, and contribution to, society

About this report *continued*

Nature of business and customer base

Eskom is South Africa's primary electricity supplier. The company, which is wholly owned by the South African government, generates, transmits and distributes electricity to industrial, mining, commercial, agricultural and residential customers. It also sells electricity to municipalities, which in turn redistribute it to businesses and households within their areas.

Legal and operational structure

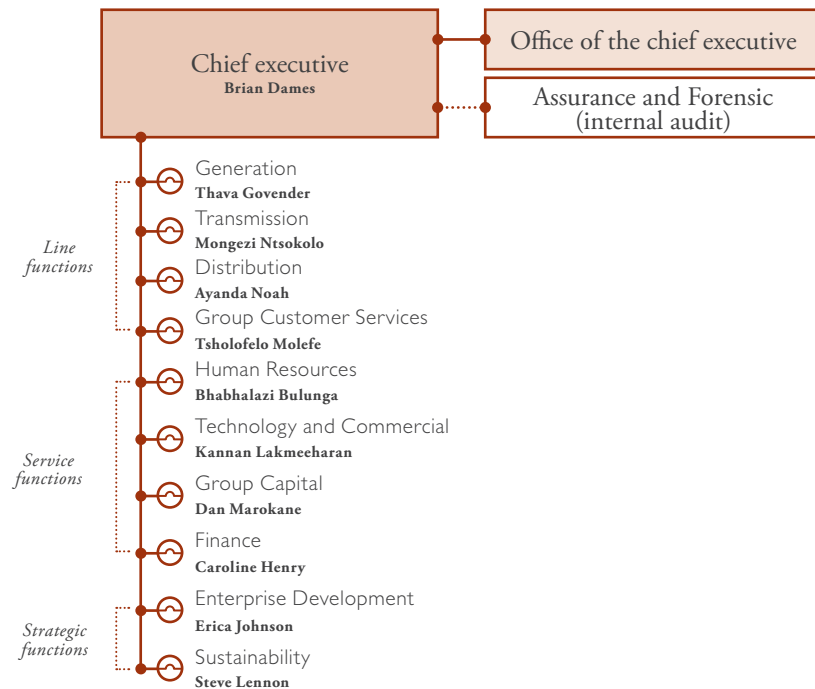
Eskom's head office is in Johannesburg. It also has operations across South Africa and maintains a small office in London, primarily for quality control of the equipment being manufactured offshore for the capital expansion programme.

Eskom has several operating subsidiaries:

- Eskom Enterprises SOC Limited
- Escap SOC Limited
- Eskom Finance Company SOC Limited
- Eskom Development Foundation NPC

Further details on the legal structure of Eskom Holdings SOC Limited and its subsidiaries are available online at <http://integratedreport.eskom.co.za/004>.

The diagram that follows illustrates Eskom's organisational structure, together with the names of the group executives responsible for each function.



Refer to the Corporate Governance section alongside, which has details on the changes to the composition of the Executive Management committee.

Eskom's purpose, values and strategic objectives

Eskom's strategic direction is encapsulated in its purpose statement, eight strategic objectives, and values. For further details on each of Eskom's objectives please refer to <http://integratedreport.eskom.co.za/005>.

Eskom's purpose, values and strategic objectives



Corporate governance

Details on the structure and operation of the board and the Executive Management committee, including a review of committees and initiatives designed to ensure good governance, statutory compliance and Eskom's remuneration philosophy are available online at <http://integratedreport.eskom.co.za/006>.

Change in board composition in 2013/14

Paul O'Flaherty, the finance director and group executive for Group Capital, tendered his resignation in November 2012 and vacated his post on 10 July 2013.

Changes in Executive Management committee composition in 2013/14

The process to fill the finance director and group executive for Group Capital vacancies is in progress. Insofar as the finance director post is concerned, Eskom's memorandum of incorporation stipulates that the board, after obtaining approval from the shareholder, will appoint executive directors. In the interim, Caroline Henry, the senior general manager responsible for the Treasury function and Dan Marokane, the group executive for Technology and Commercial were appointed to act as chief financial officer and group executive: Group Capital, respectively. Kannan Lakmecharan, the divisional executive for the Office of the chief executive was appointed to act as group executive for Technology and Commercial.



1923-2013

Business overview

Business overview

Eskom kept the lights on during the past winter with the help of all South Africans, hard work and disciplined delivery on goals. Eskom is thankful to all consumers who switched off during the peak period from 17:00 to 21:00. In addition, open cycle gas turbines and a reduction by contracted industrial customers were used to meet the energy demand.

Response to MYPD 3 determination

On 28 February 2013, NERSA approved total revenue of R863 billion over the next five years, against an applied revenue of R1 088 billion resulting in an average annual increase of 8% in electricity tariffs (this includes 2% for Independent Power Producers). The regulator's decision will result in a revenue shortfall of R225 billion over this period.

Eskom has established a Business Productivity Programme to address the revenue shortfall. The goal of the programme is to deliver sustained productivity improvements that will re-establish a high-functioning Eskom organisation, close the revenue gap for the MYPD 3 period as far as possible, without compromising Eskom's sustainability and establish a sustainable, long-term cost position beyond the next five years. The improvements will be delivered through disciplined execution, individual accountability and performance management. However, it must be pointed out that the revenue gap cannot be addressed by efficiencies alone. Critical trade-offs will need to be made and this will inevitably lead to a higher risk profile and greater vulnerability.

The programme has identified the elements required to meet the shortfall over the MYPD 3 period and is focussing on implementation thereof. Eskom's response strategy aims to close the revenue gap. The reduced capital allocation will still deliver the existing capital expansion programme. The revised budget

after reductions still aims to deliver on the eight strategic imperatives and Eskom's mandate, subject to certain strategic trade-offs and initiatives that Eskom will have to consider. The trade-offs will require a change in the approach to the operating and business model of Eskom.

There are risks that Eskom will have to manage. Reduced sales volumes will not translate into a proportional reduction of costs. The current year budget for the open cycle gas turbines was depleted in the first six months of this financial year. In order to ensure a sustainable generation asset base, Eskom will perform an adequate level of maintenance on its generation fleet. This may require that Eskom spends more on fuel costs, over and above that which was granted in the MYPD 3 determination, which will have the effect of eroding capacity for other initiatives. It may be necessary to stabilise and potentially not enhance performance on certain technical key performance indicators, for example the system average interruption duration index (SAIDI) and the system average interruption frequency index (SAIFI). It also implies a freeze in employee numbers and wage increases being limited to inflation. Eskom is committed to closing out these uncertainties before the end of the financial year.

These opportunities are in the process of being defined, including the articulation of the trade-offs and the implication to Eskom's mandate and objectives.

Business overview *continued*

System constraints

This winter was different – maintenance of the Eskom power stations was also scheduled and executed during the winter months. Although the system was tight, Eskom still managed to schedule nine planned maintenance outages, eight of which are either complete or in execution, while the remaining outage was released in October 2013 – an exceptional achievement to meet winter demand and do more maintenance than before.

While there was sufficient capacity to meet the demand during the day in winter, the power system was exceptionally tight on a number of evenings, with all available generation in service and contracted industrial customers requested to reduce demand. On 13 June 2013, the worst constrained day this past winter, the actual available reserves over the peak period were 1.09% short of demand – emergency resources including interruptible load supply options from some industrial customers were required to meet the demand.

Capital expansion programme

An additional 30MW and 90MW of generation capacity were commissioned at Grootvlei and Komati power stations respectively, 511.1km of power lines were built and 290MVA of substation capacity was commissioned.

The delivery of Medupi Unit 6 remains a key focal point. The first synchronisation date is scheduled for the second half of 2014 and commercial operation is expected six months later. Industrial action continues to impact construction progress, although contractors are experiencing reasonable labour stability through Eskom's interventions. The technical issues surrounding welding have largely been quantified and strategies to remedy and achieve relevant milestone dates are in place.

While significant challenges remain at Kusile to meet the target synchronisation in the second half of 2015, Eskom is aggressively implementing

learnings from Medupi and related recovery strategies intended to mitigate delays and achieve the earliest possible synchronisation date.

The Ingula transformer hall and dewatering shaft are three months behind the optimised schedule which will result in possible delays to other project timelines.

The year to date capital spend of R23.4 billion is R9.3 billion below budget due to lower than planned work performed by the boiler supplier, access delays on certain packages at Medupi and obtaining of servitude and environmental approvals on other projects. There is a concerted effort to reduce the capital underspend in the six months to 30 September 2013 by the financial year-end.

Funding update

The focus of activities remains the funding requirements to the end of the committed capital expansion programme and the maintenance of a liquidity buffer of R20 billion.

During July, Eskom successfully raised \$1 billion through an international bond issuance, which was significantly over-subscribed.

Moody's changed the Eskom stand-alone credit rating from 'ba3' to 'b1' on 19 July 2013 and on 14 October 2013, Standard & Poor's affirmed Eskom's credit rating at BBB, however, downgraded Eskom's standalone credit profile by one notch to 'b-' from 'b'. This action was taken primarily in light of increased regulatory and operating risk, and weakened profitability owing to a less than favourable regulatory decision. Both ratings remain investment grade after the shareholder uplift demonstrating strong Sovereign support.

Safety performance

Eskom's employee safety performance remains a concern as there were two Eskom employee and eight contractor employee fatalities for the period. The lost-time injury rate achieved

during the period was 0.34 compared to 0.40 the previous period. Even though the target was achieved, the safety of the people remains a priority to achieve zero harm.

Technical performance

Eskom has for the past five years succeeded in keeping the lights on. However, in recent years, the margin between supply and demand has been too narrow to take generating units off-line at the pace required for adequate scheduled maintenance. This resulted in the declining technical performance of the power stations. The generation sustainability strategy has been implemented and requires on average that Eskom's power station fleet should have an energy availability factor of 80%, leaving 10% for planned maintenance outages and 10% for unplanned outages.

Maintenance is now also scheduled in the winter months. The power plant availability of 78.4% for the six months to 30 September 2013 is worse when compared to the 81.2% for the same period in the previous year, as a result of an increase in unplanned unavailability.

Relative particulate emissions' performance of 0.31kg/MWh sent out for the six months to 30 September 2013 improved compared to the same period last year (September 2012: 0.33kg/MWh). The specific water usage performance improved to 1.33L/kWh for the six months to 30 September 2013 compared to the same period last year (September 2012: 1.35L/kWh).

Eskom transported 5.4 million tonnes of coal by rail in the six months to 30 September 2013 compared to 5.0 million tonnes in the same period last year.

The number of transmission system minutes lost performance of 1.58 (for incidents of less than one system minute) for the period was marginally higher than 1.53 in the previous comparative period.

The distribution system average interruption frequency index improved from 22.6 interruptions per annum in September 2012 to 20.1 interruptions per annum in September 2013. The distribution system average interruption duration index improved from 43.9 hours per annum in September 2012 to 37.3 hours per annum in September 2013. These improvements are a result of the reliability improvement investments made over the past few years.

During the six months to 30 September 2013, 53 600 homes were electrified (September 2012: 32 216). The integrated demand management strategy achieved demand efficiency savings of 117MW (September 2012: 220MW).

Supplier development and localisation

During the six months to 30 September 2013, 62.4% of the awarded contracts in the capital expansion programme represented local content (September 2012: 88.6%). By the end of September 2013, 38 423 jobs (September 2012: 32 478) had been directly created by the build projects. The B-BBEE attributable spend for the six months to 30 September 2013 is 87.6% (September 2012: 72.5%).

Financial performance overview

Eskom achieved a group net profit for the six months to 30 September 2013 of R12.2 billion. Eskom achieves higher profits in the first six months of the financial year due to higher tariffs and energy demand in winter. Electricity sales decreased by 0.1% when compared to the prior comparative period – this was mainly due to a warmer winter. Primary energy costs increased by 25.3% from 22.5c/kWh to 28.3c/kWh mainly due to the cost of open cycle gas turbines, coal usage costs and costs resulting from start-ups after trips and supplementary burn during load loss periods. The coal stock days at 30 September 2013 were 53 days, up from the 44 days at 30 September 2012.

Business overview *continued*

Electricity debtors increased from R16.7 billion at 31 March 2013 to R20.8 billion at 30 September 2013 as a result of the winter tariffs that came into effect on 1 July 2013. The allowance for impairment for trade and other receivables increased by R0.6 billion from R4.3 billion to R4.9 billion during the same period. Arrear debt will receive continued focus in the future as the tariff increases and as the defaulting municipality debt trend persists.

Cash and cash equivalents together with liquid investment in securities, amounted to R43.2 billion as at 30 September 2013 (September 2012: R46.3 billion). This liquidity situation is largely due to the international bond financing happening earlier than predicted and is a short-term phasing item only.

Outlook

The power system will remain tight in summer. Summer is typically maintenance season, but this summer maintenance will increase based on the generation sustainability strategy as most of the scheduled maintenance is fixed and cannot be deferred. Outages will also be done to ensure that Eskom complies with environmental legislation.

Additional supply and demand-side options have been identified to meet medium-term electricity demand, but this is dependent on funding restrictions as a result of the MYPD 3 – 8% tariff determination. The open cycle gas turbines will run harder during summer subject to budget availability to fund their use. Approximately 2 100MW of interruptible load supply, for up to two hours a week, is available from the aluminium smelters to help manage the frequency of the power system during unexpected events.

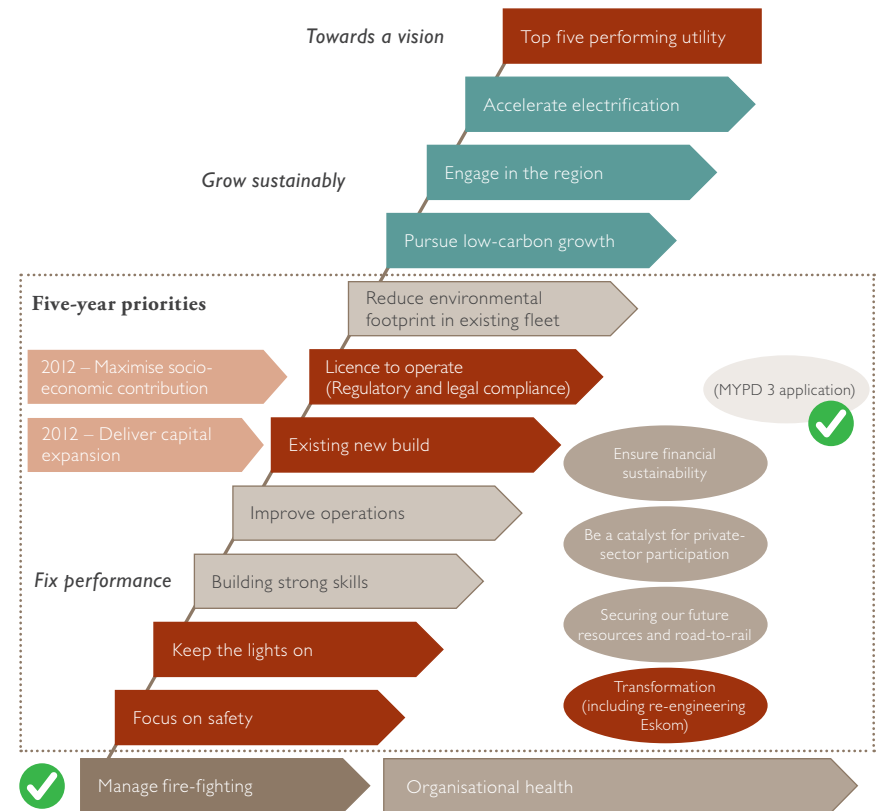
A small year-on-year sales growth of 0.6% is expected for the year ending 31 March 2014. The current energy losses trend, despite additional focus being applied, continues to increase.

The outstanding debt trend for Soweto and municipalities is expected to remain a concern in the current economic environment.

The power plant availability is expected to decrease towards the year-end due to planned maintenance. However, it is expected that the positive trend for particulate emissions and specific water use will continue for the remainder of the year.

Eskom's strategic direction, including its purpose, mandate, strategic objectives and values, remain unchanged for the period 2013/14 to 2017/18. Eskom will continue to focus on the five areas highlighted in the March 2013 integrated report and in red in the graphic alongside, where step changes are required to create a solid platform to 'shift performance and grow sustainably'. The Transformation focus area includes the re-engineering of Eskom, which will be addressed through the Business Productivity Programme.

Eskom priorities



Business overview *continued*

Shareholder compact

The government of the Republic of South Africa is Eskom's sole shareholder. The shareholder representative is the Minister of Public Enterprises. Each year, Eskom, in consultation with the Minister of Public Enterprises, agrees on its performance objectives, measures and indicators in line with the Public Finance Management Act (PFMA).

Below is an overview of performance against the key performance indicators in Eskom's shareholder compact with the government. The compact is reported at an Eskom company level.

Key performance areas	Key performance indicator	Unit	Target year to Mar 2014	*	Actual half year to Sep 2013
Focusing on safety	Employee lost-time incident rate	Index	0.36	✓	0.34
Keeping the lights on	Maintenance backlog reduction based on Eskom Technical Governance committee approval ¹	Number	0	✓	1
	IDM demand savings	MW	379	✓	117
	Internal energy efficiency	GWh	15	✓	0
Being customer centric	Customer service index	Index	88.7	✗	86.9
Improving operations	Normal unplanned capability loss factor (UCLF)	%	≤ 10	✗	11.53
	Less: Constrained UCLF ²	%	n/a	–	3.45
	Underlying UCLF ³	%	10	–	8.08
	EAF	%	80	✗	78.42
	SAIDI	Hours	45	✓	37.28
	Total system minutes lost for events <1 minutes	Minutes	3.4	✓	1.58

Key performance areas	Key performance indicator	Unit	Target year to Mar 2014	*	Actual half year to Sep 2013
Delivering capital expansion	Generation capacity installed and commissioned	MW	100	✓	120
	Transmission lines installed	Km	770	✓	511.1
	Transmission capacity installed and commissioned	MVA	3 790	✓	290
	Generation new build capacity milestones (Medupi, Kusile and Ingula)	Days deviation	30	✓	5.75
Reducing environmental footprint	Relative particulate emissions	Kg/MWh sent out	0.36	✓	0.31
	Specific water consumption ⁴	L/kWh sent out	1.39	✓	1.33
Implementing coal haulage and the road-to-rail migration plan	Coal road-to-rail migration	Mt	11.5	✓	5.4
Ensuring financial sustainability	Cost of electricity (excluding depreciation)	R/MWh	453.4	✗	500.27
	Interest cover	Ratio	1.18	✗	2.27
	Debt/equity (including long-term provisions)	Ratio	2.17	✗	1.84
	FFO as % of total debt	%	9.11	✗	8.68

* Forecasted performance to target as at 31 March 2014. Green ✓ indicates target will be achieved and red ✗ indicates that the target is at risk and will be aggressively managed until year-end.

1. Refer to page 38 for the maintenance backlog reduction strategy, where the extent of the maintenance backlog is explained.
2. Constrained UCLF – this is UCLF that results from emissions and short-term related UCLF due to system constraints to meet the 'Keep the Lights On' objective. This is apportioned between the planned capability loss factor (PCLF) and the other capability loss factor (OCLF), which is the energy lost because of unplanned shutdowns.
3. Underlying UCLF – the difference between normal and constrained UCLF and which is still within Eskom's control.
4. The specific water performance excludes Komati power station.

Business overview *continued*

Key performance areas	Key performance indicator	Unit	Target year to Mar 2014	*	Actual half year to Sep 2013
Building strong skills (total pipeline or new enrolments)	Training spend as % of gross employee benefit costs	%	±5	✓	7.48
	Engineer learners	Number	2 007	✓	2 269
	Technician learners	Number	780	✓	822
	Artisan learners	Number	2 619	✗	2 518
	Strategic youth development programme	Number	5 000	✓	5 100
Maximising Eskom's socio-economic contribution	Local sourcing in procurement ⁵	%	52	✓	62.4
	Procurement from B-BBEE compliant	%	75	✓	87.6
	Procurement from black youth owned	%	1	✓	1.0
	Employment equity – disability	%	3	✗	2.6
	Racial equity in senior management, % of black employees	%	61	✓	59.5
	Gender equity in senior management, % of female	%	30	✓	28.6
	Racial equity in professionals and middle management, % of black employees	%	71	✓	70.5
	Gender equity in professionals and middle management, % of female employees	%	36	✓	35.5

* Forecasted performance to target as at 31 March 2014. Green ✓ indicates target will be achieved and red ✗ indicates that the target is at risk and will be aggressively managed until year-end.

5. Measures the local sourcing from the capital expansion projects.



An unsafe electricity connection is fixed in Cosmos, Johannesburg



1923-2013

Performance on strategic objectives

Performance on strategic objectives

This section deals with Eskom's performance during the six months to 30 September 2013, placed within the context of its eight strategic objectives, as highlighted in 'About this report' on page 9. It includes relevant key performance indicators for each objective; actuals for the current period and historical data for comparison; operating highlights and challenges faced; as well as a performance commentary on each key performance area. Unless otherwise stated, future focus areas have remained unchanged since 31 March 2013.

Integrated Resource Plan 2010 (IRP 2010)

The IRP 2010 sets out South Africa's long-term energy needs and discusses the generating capacity, technologies, timing and costs associated with meeting that need. The update to the integrated resource plan by the Department of Energy is expected to be available towards the end of 2013. The determination on Eskom's allocation pursuant to the IRP 2010 is still to be made.

Notwithstanding the absence of an IRP 2010 allocation, Eskom has an aspirational allocation, which takes into consideration its ambition to diversify its energy mix. Eskom opted to take the lead in the development of the various generation options in the IRP 2010 and acknowledges that it may not be the owner or operator of these proposed generation alternatives. This approach was aimed at ensuring that 'execution ready' options and plans exist for the country.

The development of the framework which informs how Eskom would pursue new capacity options extending up to and beyond 2030 has, however, been put on hold until Eskom's future business model and the outcome of the IRP 2010 review have been finalised. In view of Eskom's inability to fund front-end planning activities of its aspirational IRP 2010 allocation, Eskom decided to proceed with the development at the lowest possible level for the next coal and nuclear power stations to avoid team demobilisation. No long-term commitments are to be made and expenditure is to be kept to an absolute minimum.

Coal 3

Development work for a third new coal fired powered station began in early 2008 and continued during 2009/10. In March 2010, a decision was made to stop development work on the project. The project was restarted in February 2012 with the investigation of the flexibility and modular build options. Currently, the project is awaiting PFMA approval from the Department of Public Enterprises before proceeding with site property acquisition and conducting further project development work.

Eskom and the government need to make a decision on the appropriate water pipe size for phase 2 of the Mokolo and Crocodile Water Augmentation Project. The process to purchase properties and restart the generation environmental impact assessment can only commence upon approval from the Department of Public Enterprises.

Performance on strategic objectives

continued

Nuclear build programme

The programme aims to deliver Eskom's assigned portion of the nuclear power capacity as specified in the Integrated Resource Plan 2010 on a timely basis. The capacity and timing of new nuclear power projects within South Africa are guided by the IRP 2010 process, which in its 2010 revision called for 9.6GW of nuclear power to be commissioned between 2023 and 2029. The South African cabinet endorsed the designation of Eskom as the owner-operator as per the Nuclear Energy Policy of 2008 on 7 November 2012.

Eskom's funding prioritisation following the MYPD 3 determination has resulted in the

cutting back of all programme activities barring those where termination would result in serious programme setbacks. The critical path for this project is being delayed and the funding of these limited activities will have to be reconsidered.

Eskom will continue aligning with government stakeholders on the short-term funding of the programme and work on securing this funding. Eskom's MYPD 3 application did not include any capacity expansion projects post the Kusile power station.

MYPD 3 price determination

On 28 February 2013, NERSA approved total revenue of R863 billion over the next five years, against an applied revenue of R1 088 billion resulting in an average annual increase of 8% in electricity tariffs (this includes 2% for Independent Power Producers). The new tariffs took effect on 1 April 2013 for Eskom customers and from 1 July 2013 for municipal customers. NERSA's decision will result in a revenue shortfall of R225 billion over the next five years.

The impact of a reduction from the applied tariff increase of 16% to the NERSA determined 8% requires significant changes to the Eskom business. Eskom's response to the overall challenges facing the organisation will be addressed through the execution of the Business Productivity Programme.

The Business Productivity Programme aims to deliver cost saving opportunities in order to close the revenue gap resulting from the MYPD 3; 8% tariff increase determination by NERSA. The programme focusses on the reduction of the cost base, increased

productivity and revisions to the Eskom business model and strategy.

A detailed review of the cost base has been conducted. A structured cost management methodology has been implemented. For every opportunity a full process is followed, including conceptual definition, detailed analysis, business case development, budget adjustment, implementation and tracking of benefits. International skills and best practices are utilised to define opportunities and apply proven methodologies and processes.

The programme has been mobilised and staff have been seconded on a full time basis. Governance processes have been implemented and methodologies embedded. The project team is structured in mainly seven key functional areas, focussing on:

- improving efficiency and effectiveness of the capital programme
- reducing external spend through efficient procurement practices, price reduction and revision of technical standards
- reducing revenue losses, improved debt management and finding additional revenue sources
- maintenance cost and process optimisation
- opportunities to reduce direct and indirect employee benefit cost
- funding options and balance sheet optimisation
- optimising and reducing the cost of primary energy

Savings opportunities have been identified, however, it must be highlighted that these opportunities will be dependent on certain trade-offs in terms of Eskom's mandate and objectives. These are in the process of being defined and consulted with stakeholders. Savings opportunities are in various stages of maturity. It is anticipated that not all opportunities will realise.

Also, external factors that will result in increased pressure on cost will be closely

monitored, specifically the implications of the declining sales volumes – savings targets will be amended accordingly.

The key focus areas for the next six months will be:

- articulation of trade-offs and the implication to Eskom's mandate and objectives
- continued formulation of opportunities to save cost
- detailed analyses and development of a robust business case for each savings opportunity
- expedited implementation of 'quick wins'
- initiation of the revisions to the Eskom business model
- development of a detailed implementation plan per value package
- revise the Eskom performance model and incentive scheme
- continued communication and stakeholder management
- sign-off of all value packages and adjustments to divisional budgets
- implementation and monitoring of savings opportunities

Eskom is confident that the Business Productivity Programme provides a sound basis to address the challenge of financial sustainability into the future. The programme is actively supported by the chief executive and the Executive Management committee to ensure focus and delivery.



Koeberg nuclear power station was completed in 1984 and has been operated safely for the past 29 years

Performance on strategic objectives

continued

Becoming a high-performance organisation

Eskom continues its transformation into a utility focused on improved customer service; safer, more effective and efficient operations; better service delivery; talent and skills development and management; transparency; and consistency in communications.

Operating highlights

- The implementation of the generation sustainability strategy has already seen benefits, as the increased opportunity for maintenance has enabled several power stations to significantly improve their emissions performance
- At 30 September 2013, both Koeberg units had been simultaneously online for 160 days, surpassing the previous record set in 2004
- Sustained improvement in the following key technical performance measures:
 - No transmission major incidents occurred during the six months to 30 September 2013
 - The excellent line fault performance attained during the 2012/13 year has continued, as the line fault performance was 0.78 line faults per 100km for the six months to 30 September 2013 (September 2012: 0.91 line faults per 100km)
 - Network performance as measured by system average interruption duration index (SAIDI) and the system average interruption frequency index (SAIFI) improved during the six months to 30 September 2013
- The contact centre's KeyCare performance indicator, which measures Eskom's interactions with its large industrial customers was above target for the six months to 30 September 2013

Operating challenges

- Eskom's safety performance remains a challenge
- The outage plan and backlog is spread over five years, hence the turnaround in the unplanned capability loss factor performance will be gradual
- Executing the generation sustainability strategy, while keeping the lights on in an environment where the capital expenditure budget to execute the technical plan, is being reduced
- Challenges were experienced during winter following the failure of a gas insulated switchgear installation at Croydon substation, where high loading prevented normalisation due to outage constraints
- Debt collection remains a key area of concern, both from the municipalities and the small power users

Focusing on safety

Eskom's safety principle is that no operating condition or urgency of service justifies exposing anyone to negative risks arising out of Eskom's business or causing them injury or damage to the environment. This principle applies to all levels of the company, the public and the environment.

Key performance indicators for Eskom's safety performance

Indicator and unit	Actual half year to Sep 2013	Actual half year to Sep 2012	Actual year to Mar 2013
Employee lost-time incident rate (LTIR) ^{SC,1} , rate	0.34	0.40 ²	0.40 ²
Fatalities (employees and contractors), number	10	11	19

SC Indicator included in the shareholder compact.

1. The progressive lost-time incident rate (LTIR) is a proportional representation of the occurrence of lost-time injuries over 12 months per 200 000 working hours.

2. Number revised from 0.39 to 0.40 due to the late reporting of incidents.

Two Eskom employees (September 2012: one) and eight contractor employees (September 2012: 10) died on the job in the six months to 30 September 2013, while the lost-time incident rate showed improvement. The two Eskom employees lost their lives due to a motor vehicle accident and an electrical contact incident.

Of the eight contractor employees who lost their lives, four were due to motor vehicle accidents, one was struck by an object, one was caught between objects, one was due to an electrical contact and another was due to an assault.



Eskom's customer service is measured via the customer service index

Performance on strategic objectives

continued

Improving operations

Key performance indicators for improving performance

Indicator and unit	Definition of indicator	Actual half year to Sep 2013	Actual half year to Sep 2012	Actual year to Mar 2013
Normal UCLF ^{SC} %	Measures the lost energy due to unplanned production interruptions resulting from equipment failures and other plant conditions	11.53	9.98	12.12
Constrained UCLF %	UCLF that results from emissions and short-term related UCLF due to system constraints to meet the 'Keep the Lights On' objective. This is apportioned between the planned capability loss factor (PCLF) and the other capability loss factor (OCLF)	3.45	2.49	3.41
Underlying UCLF %	The difference between normal and constrained UCLF and that is still within Eskom's control	8.08	7.49	8.71
Planned capability loss factor (PCLF) %	Planned energy loss is energy that was not produced during a period because of planned shutdowns or load reductions due to causes under plant management control	9.36 ² / 8.73 ³	7.86	9.10
Energy availability factor (EAF) ^{SC} %	EAF measures plant availability, plus energy losses not under the control of plant management (external) and internal non-engineering constraints	78.42	81.18	77.65
Total system minutes lost for events <1 minute ^{SC} , minutes	Total number of system minutes lost (for incidents of less than one minute)	1.58	1.53	3.52
Major incidents, number	Records the number of incidents with a severity greater than one system minute	0	1	3
SAIDI ^{SC} , hours per year	System average interruption duration index – measures the availability of supply	37.28	43.85	41.89
SAIFI, events per year	System average interruption frequency index – measures the reliability of supply	20.10	22.61	22.19

SC Indicator included in the shareholder compact.

1. OCLF – Other capability loss factor is the energy lost because of unplanned shutdowns due to conditions that are outside Eskom's generation management control.

2. Underlying PCLF – the sum of the normal PCLF and the constrained PCLF (the apportionment of the constrained UCLF that is assigned to PCLF).

3. Normal PCLF.

Generation

Eskom aims to become a world-class generating utility, capable of providing electricity without interruptions due to plant unavailability. Eskom operates 27 power stations with a total nominal capacity of 41 978MW.

Plant performance

The UCLF percentage for the six months to 30 September 2013 was both higher than the target and the September 2012 figure. This had a negative impact on Eskom's power plant availability (EAF percentage).

The higher UCLF percentage is an indication of the deteriorating plant health of an ageing power station fleet. The following factors contributed to the high UCLF percentage recorded in the six months to 30 September 2013:

- Partial load losses contributed 4.47% and continue to increase
- 94 boiler tube failures (September 2012: 87) contributed 1.97%
- Major/significant load losses contributed 1.74%

Generation sustainability strategy

The strategy aims to improve technical performance in the generation plant over the long term, in a sustainable manner, whilst minimising the negative impact on Eskom's ability to 'keep the lights on'.

The strategy ensures that the opportunity is created to perform the required maintenance on the generating plant (within the constraints of achieving 80% plant availability), but at the same time addressing people and process issues. There is a need for a predictable and sustainable power plant performance within a targeted technical performance of 80:10:10 over the next five years; 80% EAF, 10% PCLF, 9% UCLF and 1% other capability loss factor (OCLF). The target for UCLF and OCLF is a maximum of 10%.

Koeberg performance

On 20 February 2013, Koeberg Unit 1 sustained a reactor and turbine trip due to a switchboard busbar fault. The unit was returned to service on 22 April 2013, and reached full load on 26 April 2013. A partial loss was required for a condenser tube-leak repair from 31 May 2013 to 2 June 2013. Koeberg Unit 2 has operated continuously since its return from a refuelling outage at the end of November 2012.

Steam Generator Replacement Project

The project to replace Koeberg's steam generator is currently in the final stage of the procurement process. The project will extend Koeberg nuclear power station's life by 20 years. Negotiations with potential suppliers will start once the board confirms the mandate and the necessary approvals are obtained.

Transmission

Eskom's power stations generate electricity, which then flows through its transmission and distribution networks to its end customers. The transmission grid comprises 155 substations and approximately 29 300km of transmission lines.

This network is used whenever Eskom needs to balance electricity supply and demand in real time, trade electricity internationally, or buy energy from Independent Power Producers (IPPs).

Technical performance

The total number of system minutes lost performance (for incidents of less than one system minute) for the six months to 30 September 2013 was impacted by a combination of human errors, ageing assets as well as incidents triggered by customer network faults, which exposed transmission system vulnerabilities. Focus areas include initiatives to improve asset management and human performance.

Performance on strategic objectives

continued



Regular maintenance strengthens the distribution network

Criminal incidents

Although no significant incidents have occurred during the period to 30 September 2013, this remains a risk for Eskom. An incident involving theft of copper at a substation resulted in an interruption to a rural supply point. PFMA approval has been obtained for the Transmission National Security Refurbishment project investment proposal. This project includes various initiatives to improve and upgrade the security systems at various critical and high-risk transmission sites in order to mitigate potential risks, thereby ensuring the integrity of assets and continuity of supply.

Distribution

Eskom's distribution network relays electricity from the transmission network to most of Eskom's end users. Eskom's distribution network in South Africa consists of approximately 325 000km of power lines.

Technical performance

The SAIFI performance improved in the six months to 30 September 2013, although not achieving the target of ≤20 interruptions per annum for 2013/2014. SAIDI performance improved in the six months to 30 September 2013 and achieved the target of ≤45 hours per annum for 2013/2014.

The improved distribution network performance is driven by the overall planning, coordination and disciplined execution of Eskom's network reliability improvement plans and other operational excellence initiatives. Eskom's long-term distribution network objective is to move to the first quartile performance for distributors with similar network characteristics.

Being customer centric

Eskom's customer-centricity programme aims to ensure that its customers are fully satisfied and serviced, and that they consistently rate Eskom highly.

Key performance indicators for being customer centric

Indicator and unit	Actual half year to Sep 2013	Actual half year to Sep 2012	Actual year to Mar 2013
Arrear debt as a percentage of revenue, %	0.90	0.66	0.81
Customer services (large power users – excluding municipalities), average debtors' days ¹	16.5	n/a	18.3
Customer services (large power users – municipalities), average debtors' days ¹	26.4	n/a	22.4
Customer services (small power users excluding Soweto debt), average debtors' days	44.3	41.3	48.2
Customer services (large power top customers excluding disputes), average debtors' days	15.2	14.0	12.3
Customer service index ^{SC}	86.9	86.6	86.8
Eskom KeyCare, index	107.3	105.1	105.8

^{SC} Indicator included in the shareholder compact.

¹ The Customer Services average debtors' days target for large power accounts excluding top customer accounts were split into two different components to distinctively measure municipal performance separately from normal operating large accounts as indicated in the table above with associated targets for the financial year. The new measures have been in place since March 2013.

Customer service performance

Eskom's customer satisfaction levels are assessed in terms of a composite index, which measures Eskom's service to residential, small and medium customers and the Eskom KeyCare rating, which measures the satisfaction of Eskom's large industrial customers. The customer service index performance was stable, while the Eskom KeyCare measure showed improvement in the six months to 30 September 2013. The improvement in the KeyCare performance is indicative of the regular interactions with top customers to share critical information on the power system status and capital expansion programme.

The online vending system was successfully enhanced and went live on 22 July 2013.

Municipal arrear debt

Municipal arrear debt continues to rise. The total municipal debtors increased from

R5.1 billion at 31 March 2013 to R7.0 billion as at 30 September 2013; R1.2 billion and R2.4 billion of which were arrears as at 31 March 2013 and 30 September 2013 respectively. The percentage of municipal arrear debt to total municipal debt has increased from 24% in September 2012 to 34% in September 2013. The expected reduction in total municipal arrear debt in July 2013 as a result of municipalities receiving their governmental equitable share income didn't materialise and only limited payments were made to Eskom.

Eskom started the disconnection process in line with the Promotion of Administrative Justice Act (No 3 of 2000) process to a number of municipalities mainly in Mpumalanga and in the Free State. Disconnection was averted as the municipalities have taken appropriate action upon receipt of Eskom's disconnection notice by either paying or making arrangements to

Performance on strategic objectives

continued

settle their debt. In October 2013, Eskom was interdicted and restrained from disconnecting the bulk electricity to Thaba Chweu Local Municipality in Mpumalanga subject to the outstanding debt or a payment schedule for such debt, be negotiated and concluded by 18 November 2013.

Soweto arrear debt

The Soweto arrear debt remains a major concern. The total Soweto debt as at 30 September 2013 was R3.5 billion (31 March 2013: R3.2 billion), which excluded all interest charges raised on these overdue amounts.

The residential revenue management strategy, which includes Soweto, entails the installation of split metering with protective enclosures and converting customers to prepaid with new supply group codes to eliminate ghost vending. This strategy, combined with focussed credit management and disconnections should assist in the recovery of outstanding debt.

Energy losses and theft

Energy losses continue to be a challenge for utilities globally, both within developed and developing economies. As a result of the increasing production costs within the value chain, it is becoming increasingly important for utilities to manage these losses at acceptable levels. Within Eskom the problem becomes even more visible because of the generation capacity challenges being experienced.

In the six months to 30 September 2013, Eskom's total energy losses were 9.22% (September 2012: 8.98%).

The distribution energy losses performance since March 2013 has deteriorated due to two dominant factors, namely:

- A significant reduction in sales to high-voltage customers result in an increase in the distribution losses percentage

- Non-technical losses, particularly theft, has been growing across all sectors in Eskom's customer base, resulting in increases in the energy losses volume

For internal evaluation purposes the estimated technical losses range from between 60% and 75% of total losses in the distribution networks, while 100% is estimated for the transmission networks.

The current harsh economic conditions being experienced across the country also contributes to the deterioration in energy and revenue losses. Eskom will continue to focus on curbing electricity theft, while ensuring that the technical losses are also kept in check.

Conductor or copper theft continues to plague Eskom. In the six months to 30 September 2013, R13.3 million of material was stolen (September 2012: R10.5 million), 833 incidents were reported (September 2012: 816) and 118 perpetrators were arrested (September 2012: 130).

The increase in the value of the material stolen remains a serious concern and is an indication of organised criminal activity in the conductor theft environment. This is being addressed by means of intelligence driven investigations by the Hawks special investigating unit, supported by industry and aggressive policing of the market for stolen goods.

On a positive note, the courts are taking this type of crime seriously and the sentences being meted out to perpetrators are starting to be comparable to the severity of the crime.

The joint industry working group, formed by Eskom, Transnet, Telkom, the South African Police Services, the National Prosecuting Authority, Business Against Crime and the South African Chamber of Commerce and Industry, continues to positively contribute in the fight against crime.

Building strong skills

Eskom constantly needs to source, develop and retain technically skilled workers at all levels of the company to ensure the sustainability of its business.

Key performance indicators for building strong skills

Indicator and unit	Actual half year to Sep 2013	Actual half year to Sep 2012	Actual year to Mar 2013
Training spend as a percentage of gross employee benefit costs ^{SC,1} , %	7.48	n/a	n/a
Total engineer learners in the system ^{SC} , number	2 269	2 052	2 144
Total technician learners in the system ^{SC} , number	822	733	835
Total artisan learners in the system, number ^{SC}	2 518	2 040	2 847
Strategic youth development programme, number ^{SC}	5 100	5 029	5 701

SC Indicator included in the shareholder compact.

1. New key performance indicator, comparatives not available.

As at 30 September 2013, there were 5 609 technical learners (engineers, technicians and artisans with three- to four-year learning or bursary contracts) in the pipeline, 217 lower than the 5 826 learners as at 31 March 2013. There were also 5 100 participants in the

youth programme, which trains young people to contribute to the country's socio-economic development, of which 2 590 represent the young people funded by Eskom. The remainder of the participants are trained by the capital expansion programme suppliers.



Illegal connections not only create revenue problems for Eskom, but also create safety risks

Performance on strategic objectives

continued

Investing in appropriate technologies

Eskom sees itself as a highly innovative organisation, on par in research and innovation with other leading international power utility companies.

Eskom invested R216.6 million into researching and testing technologies with R41.8 million directly invested in applied research and R9.8 million into capital pilot and demonstration projects. An initiative is under way to identify efficiency opportunities and refocus the portfolio. The portfolio is focussed on 18 high priority projects for the current year, five of which are highlighted below.

Online boiler condition monitoring being piloted at Kriel power station

By combining measurement data obtained during outages with data streamed from advanced online boiler condition monitoring equipment the project has developed an innovative, proactive approach to boiler tube failure prediction.

High frequency electrostatic precipitator being piloted at Lethabo power station

The project aims to improve the particulate capture efficiency of the existing infrastructure at Lethabo power station. If successful the application can be rolled out at all electrostatic

precipitator plants, thereby improving Eskom's particulate emission performance.

Material analysis and support

Using advanced analysis techniques, it is possible to quantify the risk of power plant breakdowns and to proactively take measures to increase plant reliability and running time. Most notably, these techniques were employed in the identification of Medupi welding compliance and risk, and in defining an optimal way forward for Eskom.

Waterberg coal suitability analysis

Eskom is conducting an analysis on Waterberg coal samples to determine the suitability of this coal for use in the Mpumalanga power stations. This is of strategic importance as this knowledge will affect the procurement and transport strategies in sourcing coal for the Mpumalanga projects. The project is on track and the first samples are undergoing tests.

Underground Coal Gasification (UCG)

A strategic partnership agreement with Sasol has been signed to explore synergies between the two companies regarding strategic opportunities for UCG gas and to leverage the gas handling and gas clean up expertise of Sasol.



Live-line maintenance on the high-voltage powerlines ensures a healthy national power grid

Leading and partnering to keep the lights on

Eskom is committed to preventing load-shedding by actively partnering with all key stakeholders, including the people of South Africa, in a comprehensive supply-and-demand management strategy. This objective primarily focuses on ensuring security of supply for South Africa.

Operating highlights

- Avoided load-shedding during the six months to 30 September 2013 despite facing significant challenges
- Power plant maintenance undertaken during the past winter, which is in line with the strategy towards achieving a sustainable generation fleet
- The energy imports from the Hydro Cahora Bassa scheme have been normalised following the repair of damaged towers caused by the floods in Mozambique in 2012
- The return to service power station project has been concluded with the successful commissioning of the final 90MW unit at Komati power station. President Jacob Zuma officially declared Grootvlei power station open on 20 September 2013, following the commissioning of an additional 30MW on Unit 5 during April 2013
- Integrated demand management initiatives, mainly through demand response programmes provide the system operator with approximately 981MW of dispatchable load for its control and peak reduction requirements

Operating challenges

- Tight operational reserves resulted in a high usage of the open cycle gas turbine fleet
- The performance and reliability of the Hydro Cahora Bassa imports may be at risk pending

the finalisation of the refurbishment of the Songo converter station in Mozambique

- The MYPD 3 determination significantly reduced the integrated demand management funding, which may put the security of supply at risk
- The key challenge facing the capital expansion programme is remaining on schedule in the face of contractor issues and labour action
- Contractor performance in addressing welding issues on the boilers remains an ongoing concern
- The Ingula transformer hall and dewatering shaft is about three months behind the optimised schedule and will result in possible delays to other project timelines
- The timely acquisition of servitudes over state owned and tribal land is a challenge as in most cases land is unsurveyed

Keeping the lights on

'Keep the lights on' is a collective term that Eskom uses to refer to the complex interplay between the ability of its electricity demand-management initiatives, both internal and regionally, to reduce South Africa's energy usage and consequently provide an adequate margin between supply and demand.

Performance on strategic objectives

continued

Key performance indicators for keeping the lights on

Indicator and unit	Actual half year to Sep 2013	Actual half year to Sep 2012	Actual year to Mar 2013
Maintenance backlog reduction based on the Eskom Technical Governance committee approval ^{SC.1} , number	1	n/a	n/a
Demand management savings ^{SC} , MW	117	220	595
Internal energy efficiency ^{SC} , GWh	0	1.0	28.9

SC Indicator included in the shareholder compact.

1. The maintenance backlog reduction key performance indicator has been included in the shareholder compact for 2013/14, based on revised definitions of the maintenance backlog, and requiring approval by the Technical Governance committee. This measure tracks the status of approved scheduled backlog maintenance. If the outage has not yet started by the scheduled start date, the measure will be greater than zero. The measure is new and hence comparative figures are not available.

Managing supply-and-demand constraints

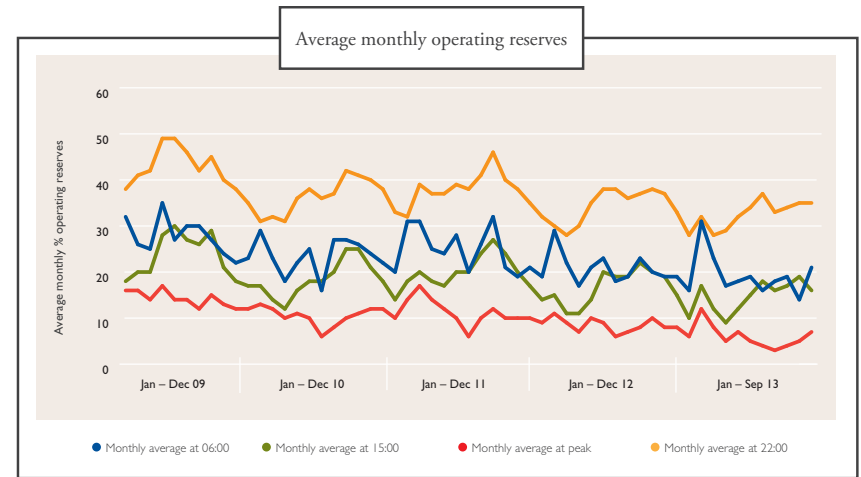
During the past six months Eskom performed more maintenance than normal as a result of implementing the generation sustainability strategy – refer to page 38, which deals with maintenance in further detail. This has created more pressure on the already tight supply-demand balance and the situation has been further exacerbated by the revenue gap, which has reduced Eskom's ability to procure additional demand and supply side levers.

While there was sufficient capacity to meet the demand during the day in winter, on a number

of evenings the power system was tight with all available generation in service and contracted demand requested to reduce load. The average available operating reserves over the peak period in June 2013 were under 3% as depicted on the graph alongside. On 13 June 2013, the worst constrained day this past winter, the actual available reserves over the peak period were 1.09% short of demand – emergency resources including interruptible load supply from some industrial customers were required to meet the demand.



Ankerlig open cycle gas turbine station in Atlantis near Cape Town



While the power system remained tight throughout this period, it was nonetheless better than expected mainly due to a warmer winter and some savings over peak periods. The reduced demand and demand-response initiatives (refer to the Demand-side management and energy efficiency section on page 40 for more details on these initiatives), including power buybacks translated into lower-than-expected sales of 110 659GWh for the six months to 30 September 2013.

Open-cycle gas turbines (OCGTs) were used more extensively over the past six months mainly as a result of the implementation of the generation sustainability strategy. The OCGT average load factor for the six months to 30 September 2013 was 11.4% (September 2012: 3.9%). While electricity sales volumes decreased slightly, this did not necessarily translate into reduced electricity demand during the peak periods of between 17:00 and 21:00; hence the requirement for OCGT generation during peak periods to meet demand. A lower than normal reduction in sales volumes to key customers in the winter periods

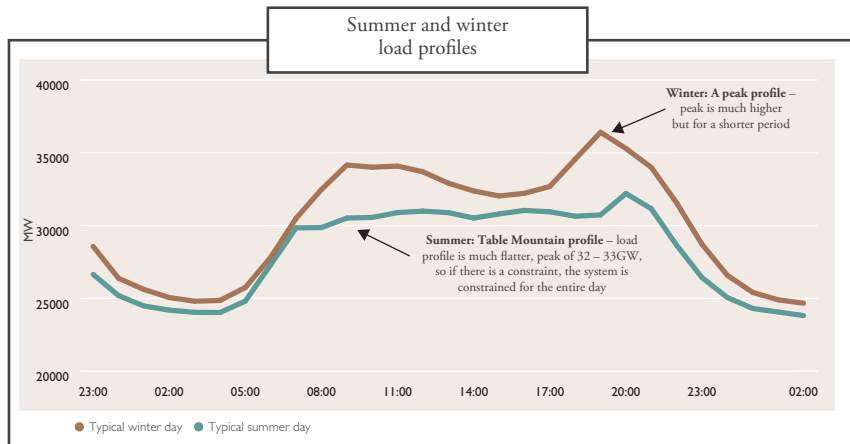
to offset the growth in sales to the remainder of the customer base did not manifest itself as strongly this year, resulting in additional demands on the OCGT fleet. The expectation is that the OCGT fleet will continue to be extensively used throughout the forthcoming summer months subject to the availability of funding. The costs associated with running the OCGT fleet for the six months to 30 September 2013 were R3.3 billion, an increase of 231% in comparison to the R1.0 billion incurred in the six months to 30 September 2012.

Refer to page 50 for details on electricity purchases from IPPs, which have contributed to the security of electricity supply.

The system outlook remains tight for the coming summer, with different challenges due to the summer load profile. Unlike winter, where the demand increases during the evening peak, the demand profile during summer is much flatter ('Table Mountain' profile as depicted in the figure overleaf) with an increased demand profile throughout the day, primarily due to air-conditioning and geysers.

Performance on strategic objectives

continued



Unlike winter, where residential customers have the greatest impact, during the summer, it is primarily the commercial sector that can make the biggest difference. The challenge is to ensure that there is sufficient generation capacity throughout the day, as Eskom continues with the maintenance plan and focuses on reducing unplanned outages.

Maintenance backlog reduction strategy

Eskom's coal-fired generating units require routine maintenance to ensure that they meet their technical performance requirements, are safe to operate and do not violate environmental laws. Almost two-thirds of Eskom's power stations are past the mid-point of their expected operating lives and they therefore require higher levels of planned maintenance work. Like any engine, generating plants need routine maintenance or upgrades that require them to be fully or partly taken out of service.

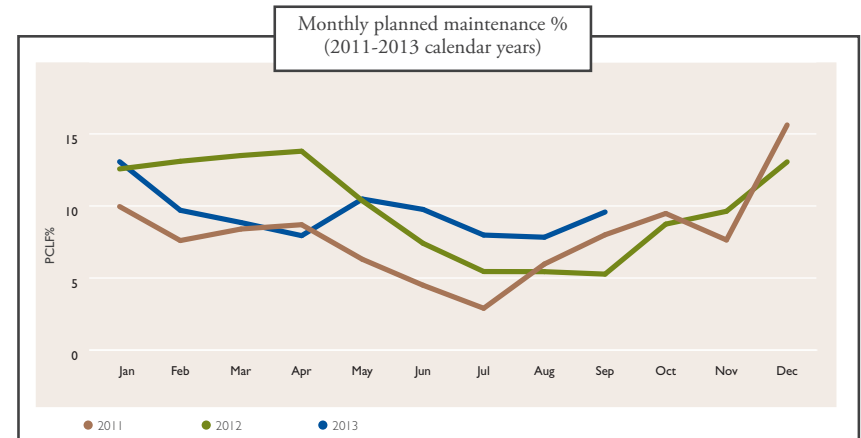
Since the load-shedding events of 2008, Eskom has committed to keep the lights on. While this strategy has ensured that load-shedding has been averted to date, it has created a

maintenance backlog, which has resulted in the deterioration of plant health and environmental performance.

To reduce the maintenance backlog and ensure the long-term sustainability of the generating plant, Eskom has and will continue to schedule more maintenance in the winter months compared to what had normally been the case in previous years. Refer to page 29 for further information regarding the generation sustainability strategy.

A maintenance schedule has been compiled to track future scheduled maintenance. During the six months to 30 September 2013, nine planned maintenance outages were scheduled. The backlog of scheduled Technical Governance committee related outages is one. Eight outages are either complete or in the process of execution. The remaining outage was released on 31 October 2013.

More maintenance was done during this winter than in the three preceding years for the same period, as evidenced by the graph which follows. This is consistent with the strategy towards achieving a sustainable generation fleet.



As at September 2013, the underlying PCLF (reflecting the energy loss during the period because of planned shutdowns) was 9.36% (including constrained UCLF) and 8.73% (excluding the constrained UCLF) against a target of 10%. Gross expenditure on power station maintenance before capitalisation and excluding employee benefit costs for

the six months to 30 September 2013 was R6.4 billion (September 2012: R3.8 billion).

Summer is typically maintenance season, but this summer maintenance will increase based on the generation sustainability strategy as most of the scheduled maintenance is fixed and cannot be deferred.



Cross-border electricity sales and purchases

In contrast to South African sales, cross-border sales in the six months to 30 September 2013 were higher than expected, mainly due to the unplanned low availability of the new Morupule B power station in Botswana; in Namibia the dry season affected output at the Ruacana hydro station; the growth in electricity demand in Mozambique has resulted in a reduced surplus of energy available for sale to other regional utilities, most notably Swaziland; and Lesotho has seen considerable load growth.

Cross border energy purchases in the six months to 30 September 2013 were lower than expected due to Hydro Cahora Bassa operating at a 1 300MW level instead of 1 500MW following the inability to restore to full output owing to the failure of the reactor at the Songo Converter Station in mid-2012.

Performance on strategic objectives

continued

Demand-side management and energy efficiency

Demand-side management interventions encourage customers to use electricity more efficiently, so reducing the gap between supply and demand in the short to medium term.

During the six months to 30 September 2013, Eskom achieved total evening peak demand savings of 117MW (September 2012: 220MW) and annualised energy savings of 306GWh (September 2012: 813GWh). Eskom spent R0.7 billion on integrated demand management initiatives¹ during the six months to 30 September 2013 (September 2012: R1.2 billion).

The MYPD 3 tariff determination has reduced the available funding for integrated demand management projects. The Standard Product and Standard Offer programmes are currently on hold, and active marketing of integrated demand management products has been stopped resulting in a reduction in the pipeline of projects.

Eskom continued the rollout of the demand response rewards programme to sign up customers to reduce demand for compensation should the electricity system require it. Currently, 579MW of supplemental and 394MW of instantaneous load, as well as 8MW of standby generation is available to the system operator for its control and evening peak reduction requirements.

Power buybacks for the six months to 30 September 2013 were 1 310GWh (September 2012: 1 289GWh), all of which were executed in April and May 2013. The costs associated with the power buybacks were provided for during 2012/13.

The residential mass rollout programme continues to be the key residential initiative contributor, delivering 81MW of verified savings in the six months to 30 September 2013. Phase two of the compact fluorescent lamp replacement programme is nearing completion with 4.5 million of the targeted 5 million bulbs installed; of which 17.7MW savings have been verified in the six months to 30 September 2013. In addition to these savings, three suppliers have been contracted to procure 5 million compact fluorescent lamps, the first batch of which is expected at the end of 2013.

Eskom contributes to the government's solar water heating initiative, which aims to install a million solar water heaters by 2014/15. In the six months to 30 September 2013, 32 165 solar water heaters have been installed, bringing the inception to date total to 319 429 for the rebate programme and 30 768 for residential contracts.

Eskom's power alert and power bulletin campaigns televised during the evening peak between 17:00 and 21:00 continue to reduce power demand during the evening peak period. The average weekday evening peak impact for the period under review for all colours (green, orange and red) is 238MW, while the average impact for the red flightings in the evening peak on the worst constrained day is 324MW.

No verified internal energy efficiency savings were recorded in the six months to 30 September 2013 (September 2012: 1GWh). There are some projects underway which are expected to deliver 15GWh of savings by the financial year-end.

Delivering capital expansion

Continue to pursue the capital expansion programme and spend the resources required to increase generation capacity, increase transmission network performance and strengthen the distribution network performance and develop comprehensive governance structures around the capital expansion programme.

Key performance indicators for delivering capital expansion

Indicator and unit	Actual half year to Sep 2013	Actual half year to Sep 2012	Actual year to Mar 2013
Generation capacity installed and commissioned ^{SC} , MW	120	20	261
Transmission lines installed ^{SC} , km	511.1	427.9	787.1
Transmission capacity installed and commissioned ^{SC} , MVA	290	2 250	3 580
Generation new build capacity milestones (Medupi, Kusile and Ingula) ^{SC} , days	5.75	-2.32	43.48
Total capital expenditure (excluding capitalised interest), R billion	23.4	26.0	60.1

^{SC} Indicator included in the shareholder compact.

The key challenge facing the capital expansion programme is remaining on schedule in the face of contractor issues and labour action. Between 2005 and 30 September 2013, the programme has increased Eskom's generating capacity by 6 137MW, its transmission lines by 5 198km and its transmission substation capacity by 24 065MVA.

Medupi

The delivery of Medupi Unit 6 remains a critical focal point. The first synchronisation of Medupi Unit 6 has been extended and is expected during the second half of 2014.

Eskom negotiated a new partnering agreement with contractors and labour. This has restored

labour stability. Site attendances have improved with the exception of sporadic instances of temporary stoppages.

Eskom continues to investigate optimal recovery processes and progress is being made in this regard. Productivity issues, however, persist. Project cost, time and commercial reviews are ongoing with the aim of achieving the target first synchronisation dates, determining cost-to-completion and developing action plans for outstanding dependencies.

The technical issues surrounding welding on the Unit 6 boiler have largely been quantified and recovery strategies are now receiving attention. The aim is to implement solutions

¹ Only reflects integrated demand management operating expenses.

Performance on strategic objectives

continued

to the post-weld heat treatment and weld procedure qualification record to meet the project milestones.

Eskom and its key partners in the Medupi project have established the Medupi leadership initiative to address the consequence of demobilisation of workers and the impact it has on the local community and economy of Lephalale.

From the more than 250 opportunities identified, six were prioritised and funding of approximately R76 million was committed by the collaborating partners to kick-start the initiative for the first three years. Many of these initiatives are planned for late 2013 to coincide with the anticipated mass demobilisation. Eskom has set aside R150 million in the Medupi project's revised business case for the Medupi leadership initiative.

Kusile

While significant challenges remain to meet the target synchronisation in the second half

of 2015, Eskom is aggressively implementing recovery strategies intended to mitigate delays and achieve the earliest possible synchronisation date, with commercial operation to follow six months thereafter. The schedule has been strained by the boiler contractor's poor progress in erecting the Unit 1 boiler.

Ingula

The Ingula transformer hall and dewatering shaft is about three months behind the optimised schedule and will result in delays to other packages and possibly to project timelines. The impact is not expected to have a major impact on the official schedule, provided there are no further slippages. The critical aspect is that the commissioning of the gates in the surge chambers could be delayed. The immediate focus for this project is to complete the civil works for Unit 3 to enable the erection of the electrical and mechanical plant by December 2013.

Generation capacity plan, 2013/14 to 2018/19 (capacity installed/first power to the grid)

Project	Year to 31 Mar 2014	Year to 31 Mar 2015	Year to 31 Mar 2016	Year to 31 Mar 2017	Year to 31 Mar 2018	Year to 31 Mar 2019	Year to 31 Mar 2020	Total
Grootvlei (return to service)	30							30
Komati (return to service)	90							90
Medupi (coal-fired)		1 588	1 588	1 588				4 764
Kusile (coal-fired)			800	800	1 600	800	800	4 800
Ingula (pumped storage)		999	333					1 332
Sere wind farm (renewable)		100						100
Total (MW)	120	2 687	2 721	2 388	1 600	800	800	11 116

The table above represents the first synchronisation dates and total capacities for each new power station unit. Commercial operation occurs several months after the first synchronisation dates in each case.

Capital expenditure

Summary of capital expenditure by division, excluding capitalised borrowing costs

Division (R million)	Actual half year to Sep 2013	Actual half year to Sep 2012	Actual year to Mar 2013
Group capital	14 971	17 322	37 690
Generation	3 613	3 095	8 512
Transmission	719	474	893
Distribution	3 517	3 680	8 317
Subtotal	22 820	24 571	55 412
Future fuel	1 153	1 042	2 634
Eskom Enterprises	163	278	376
Other areas including intercompany eliminations	(696)	129	1 711
Total capital expenditure	23 440	26 020	60 133



The Ingula pumped storage scheme under construction entails 16km of tunnels and 8km of waterways

Performance on strategic objectives

continued

Reducing Eskom's environmental footprint and pursuing low-carbon growth opportunities

Improving environmental performance remains a focus area for Eskom.

Operating highlights

- Improved relative particulate emission and water use performance when compared to the equivalent period last year
- The Sere wind farm construction has gained momentum and the first foundations for the wind turbine generators have been poured and the first consignment of equipment has arrived at the Saldanha port
- Eskom has actively participated in the governmental processes to develop carbon budgets, adaptation plans, measuring and evaluation protocols, greenhouse gas reporting (carbon dioxide, methane, nitrous oxide, sulphur hexafluoride, hydro fluoro carbons) procedures and mitigation plans for the country. Eskom is providing active advice, drafting submissions and participating in government's international climate change negotiation process
- Eskom took second place in this year's *Sunday Times* top brand survey for 'companies that do the most to look after South Africa's environment and natural resources'

Operational challenges

- Eskom has initiated a process to request exemption from the minimum emission standards, which are applicable for existing plant standards in 2015 and new plant standards in 2020. Eskom is applying for a postponement from the minimum emission standards for some plant and exemption in

other cases where there is insufficient water, sorbent or finances available to implement compliance to the standards. The first round of public meetings for this exemption took place in July 2013. An atmospheric impact study, which assesses the impact of the proposed higher emission levels on the regional quality is being done as part of the exemption application

- Eskom's ability to significantly address the reduction of its carbon emissions by diversifying its energy mix in the medium term remains constrained by the absence of an enabling environment for large scale development of additional renewable energy projects
- Eskom provided extensive comments on National Treasury's carbon tax proposal. Extensive work was done on this and positive engagement with National Treasury continues. The implementation of a carbon tax, however, remains a challenge to the economy as it will impact electricity tariffs

Reducing Eskom's environmental footprint

While a solid reduction of carbon dioxide emissions will only be feasible with a diversification into a new-generation fleet, Eskom continues to pursue a range of actions to limit the environmental footprint on its existing fleet.

Key performance indicators for reducing Eskom's environmental footprint

Indicator and unit	Actual half year to Sep 2013	Actual half year to Sep 2012	Actual year to Mar 2013
Relative particulate emissions ^{SC} , kg/MWh sent out	0.31	0.33	0.35
Specific water consumption ^{SC,1} , L/kWh sent out	1.33	1.35	1.42
Environmental legal contraventions in terms of the Operational Health Dashboard ² , number	0	1	1

SC Indicator included in the shareholder compact.

1. The specific water performance excludes Komati power station.

2. In defined circumstances where the management of a legal contravention indicates specific management issues or failings, it is recorded on the Eskom Operational Health Dashboard.

Reducing particulate and gaseous emissions

The generation sustainability strategy and the associated increased opportunity for maintenance have resulted in improved emissions performance at several stations.

Reducing water consumption

The improved specific water consumption performance can in part be attributed to an increase in the proportion of energy generated by the dry cooled stations. Despite the improved performance, cooling water leaks and high demineralised water usage have negatively affected performance.

Ground water action plans are being developed for all the power stations based on the reviews that were conducted in March 2013. Three new water use licences were issued by the Department of Water Affairs, while 26 applications are outstanding.

Reducing environmental contraventions

The environmental compliance framework is being implemented. Zero environmental legal contraventions in terms of the Operational Health Dashboard (OHD) have been identified during the six months to 30 September 2013 (September 2012: 1). One potential OHD legal contravention associated with ash water spills at Hendrina power station is presently under investigation. There have been 15 environmental legal contraventions registered during the six months to 30 September 2013 (September 2012: 12).

Performance on strategic objectives

continued

Reducing Eskom's carbon footprint

Eskom remains committed to reducing its carbon footprint and helping the country transition to a cleaner energy mix by pursuing low-carbon sources of generation capacity.

Climate change strategy

Eskom's adaptation strategy is in the process of being implemented throughout the business. The strategy, which details how Eskom will respond to and prepare for the impacts of climate change, is industry leading. Eskom has been invited to international meetings to present this strategy and has participated in discussions to prepare business views on the issue.

Eskom is actively participating in government's process to implement the national climate change response policy. Current discussions are focussed on assessing the potential reduction of emissions by different sectors and on carbon tax. Eskom has done emission reduction scenario work and plans to update this work in the coming year, so that its contribution is relevant and factually based. In addition, there have been constructive engagements with the National Treasury with regards to the design of the carbon tax.

To ensure Eskom takes a holistic view of all its projects, Eskom's Executive Management committee recently approved a socio-economic development policy and strategy. The policy supports Eskom's drive for sustainable socio-economic growth through the provision of electricity.

Investing in renewable energy

Concentrating solar power (CSP) demonstration plant

Eskom continues the project development work on its 100MW CSP plant near Upington in the Northern Cape. The plant is based on a tower design with molten salt as the heat transfer and storage medium. This will provide some stability to the system given its dispatchable characteristics and address supply constraints during times of peak demand. The basic designs are complete, revised environmental authorisation has been received from the Department of Environmental Affairs, and the commercial documentation to shortlist the engineering, procurement and construction contractor has been prepared and will be issued to the market once Eskom receives a response to its request for exemption from the Preferential Procurement Policy Framework Act (PPPFA) from National Treasury.

Future wind, CSP and photovoltaic programme development

In anticipation of an IRP allocation, Eskom has commenced prefeasibility development work associated with its future build; this includes resource identification and environmental scanning. This will minimise scheduled delays once Eskom's allocation of future renewable projects is announced. Moreover, Eskom is developing photovoltaic projects at its sites for self-consumption and exploring solar augmentation options at its power stations.

Securing future resource requirements, mandate and the enabling environment

Eskom needs to optimally identify, develop, source, procure and deliver the required amounts of primary energy (water, coal, uranium, limestone and natural gas) to its power stations at the required locations, in the required quality, at the right time and at minimum cost.

Operating highlights

- The Komati Water Scheme Augmentation Project was commissioned and declared operational on 5 June 2013
- Coal stock days increased to 53 days at the end of September 2013 (September 2012: 44 days)
- Overall system coal quality measured by calorific value was as planned
- Significant progress in the execution of the Coal Supply Strategy
- Four medium-term contracts were signed for coal supply to the Kusile power station during the commissioning phase

Operational challenges

- Nooitgedacht Dam and the Usutu system are at their lowest water levels in the past

three years. The low water levels result in additional operating expenditure as water has to be transferred to these schemes

- The Kilbarchan Colliery is currently decanting mine affected water
- Despite the overall coal quality being on target, coal-related losses were experienced at Arnot and Tutuka power stations due to inconsistent coal quality and supply
- Coal stockyard space constraints were experienced at Lethabo, Hendrina, Camden and Komati power stations
- Production performance of cost-plus mines continue to be a challenge leading to volumes being augmented through more expensive short to medium-term coal supply agreements



The new coal conveyor at Medupi power station measures 5.2km in length to the Exxaro mine

Performance on strategic objectives

continued

Key performance indicators for securing future resource requirements, mandate and the enabling environment

Indicator and unit	Actual half year to Sep 2013	Actual half year to Sep 2012	Actual year to Mar 2013
Coal burnt, Mt	62.39	62.60	122.95
Coal purchased, Mt	65.62	65.24	126.44
Coal stock days	53	44	46

Securing Eskom's coal requirements

Coal operations and quality

Arnot and Tutuka's cost-plus mines continue to experience production issues. The excessive stone contamination and resultant poor coal quality from the New Denmark Colliery supply to Tutuka is being addressed through the current screening and X-ray sorter de-stoning pilot project at the Tutuka stockyard.

Coal security

During the six months to 30 September 2013, Eskom made representations before the Minerals Portfolio committee public hearings in Parliament to debate the Mineral and Petroleum Resource Development Amendment draft bill. The draft bill takes the discussions on coal security and declaring coal as a strategic resource into consideration.

Coal Supply Strategy

During the period under review, Eskom started to implement a set of actions to give effect to the Coal Supply Strategy. One of these actions is the creation of a mine development fund to advance black emerging coal and limestone mining projects, which will be tabled for approval by December 2013. To date, 12 contracts have been signed in accordance with Eskom's Black Emerging Miners Strategy, which was launched in December 2012.

Coal contracting status for Kusile

Progress continues on securing long-term coal and limestone supply agreements for Kusile power station. Four coal supply contracts have been signed to date for delivery to meet the planned commissioning date. The temporary coal delivery solution project to alter the delivery of coal to the Kusile stockyard through an offloading facility and trucking has been approved, and is on schedule to meet the commissioning date.

Securing Eskom's water requirements

Water operations

Several pipe connections on phase 1 of the Mokolo and Crocodile Water Augmentation Project have been completed, which have allowed for partial water delivery to Medupi. Full water delivery is expected in June 2014.

Negotiations in relation to phase 2 of the Mokolo and Crocodile Water Augmentation Project are underway and the water supply agreement with the Department of Water Affairs is expected to be signed in March 2014. The projected water delivery date has moved from December 2018 to December 2019. This is not expected to impact the retrofit of flue gas desulphurisation capability at Medupi power station, as the first two units can be retrofitted from the water available from the existing water resource.

Implementing coal haulage and the road-to-rail migration plan

Eskom's long-term ambition is to reduce the volume of coal transported by road to power stations.

Eskom will continue to reduce the movement of coal trucks on the road through various initiatives, with the aim of improving the cost and safety of coal logistics and ultimately ensuring the security of coal supply. Eskom is also investigating ways in which any economic impact to road transporters as a result of the migration from road-to-rail and their employees can be mitigated (Road Change-over Strategy).

Operating highlights

- Up to the end of September 2013, Free Carrier Arrangement (FCA) coal transporters achieved 64 days without a fatality, while delivered coal transporters achieved 78 days

Operational challenges

- During the six months to 30 September 2013, there were 13 public fatalities resulting from FCA and delivered coal transporters, and two contractor fatalities relating to FCA coal transporters
- Both Eskom and Transnet Freight Rail continue to experience operational challenges in regard to rail deliveries

Although more coal was transported by rail in the six months to 30 September 2013 compared to that in the comparative period in 2012, coal deliveries by rail remain a

challenge due to the operational performance constraints experienced by both Eskom and Transnet Freight Rail. Operational inefficiencies were experienced across all Eskom rail services. In June 2013, the rail deliveries were affected by a series of derailments on the Transnet Freight Rail Natcor rail line.

Actual road delivery costs increased in the six months to 30 September 2013 due to the fluctuation in diesel costs, increased delivery on longer routes, road-to-rail under-performance and rerouting due to coal unavailability at certain sources.

Eskom continues to drive and implement driver safety awareness with both FCA and delivered transporters. A road transportation safety response plan has been developed from an in depth review of the current road operations.

Eskom is also implementing a safety drive to curb coal road transportation over weekends as a review of fatalities indicated that there is a significant increase in fatalities during the weekend. This drive intends to stop transporters loading at mines at 18:00 on Fridays, with the power stations remaining open until 22:00 to ensure that the trucks have offloaded. The transporters resume loading at the mines at 06:00 on Sundays.

Key performance indicators for migrating coal transport from road-to-rail

Indicator and unit	Actual half year to Sep 2013	Actual half year to Sep 2012	Actual year to Mar 2013
Coal road-to-rail migration ^{SC} , (additional tonnage transported on rail), Mt	5.4	5.0	10.1

SC Indicator included in the shareholder compact.

Performance on strategic objectives

continued

Pursuing private-sector participation

Eskom acts as a catalyst for Independent Power Producers (IPPs) to participate in South Africa's electricity industry, so enhancing South Africa's security of electricity supply.

Operating highlights

- Eskom signed power purchase agreements for 1 041MW capacity with IPPs as part of the second bid submission under the Department of Energy's (DoE) renewable energy IPP procurement programme
- In June 2013, contracts for 1 005MW of the DoE open-cycle gas turbine ('Peakers') programme were signed
- The first project under the renewable energy IPP procurement programme was

connected to the grid on 27 September 2013 and commissioning is in progress

Operational challenges

- Funding approval has not been obtained to extend existing municipal baseload and Short-Term Power Purchases (STPPP) IPP contracts, which are expiring in December 2013

Purchasing and installing IPP capacity

Key performance indicators for pursuing private-sector participation

Indicator and unit	Actual half year to Sep 2013	Actual half year to Sep 2012	Actual year to Mar 2013
IPP capacity installed ¹ , MW	1 150 ²	1 083	1 135

1. Short- to medium-term contracts, municipal generation and wholesale electricity pricing system.

2. Excludes 85MW of contracted capacity not in operation.

The total approved contracted IPP capacity as at 30 September 2013 amounts to 4 707MW, which includes the Department of Energy's renewable energy IPP procurement programme. Eskom purchased 1 866GWh of energy from IPPs during the six months to 30 September 2013 (September 2012:

1 685GWh) at an average cost per unit of 84c/kWh (September 2012: 80c/kWh). The amount paid for IPP and municipal purchases amounted to R1.6 billion for the six months to 30 September 2013 (September 2012: R1.3 billion).

Transformation

Eskom is aligned to the government's development and workplace transformation goals. Transformation initiatives include internal transformation, supplier development and localisation, corporate social investment, and skills and leadership development.

Operating highlights

- The Eskom Development Foundation has approved funding for projects to the value of R81.6 million
- The B-BBEE (broad-based black economic empowerment), BWO (black woman owned) and BYO (black youth owned) attributable spend as a percentage of total measured procurement spend continues to improve

- The capping of the headcount numbers as part of the MYPD 3 response strategy has restricted the opportunities for transformation and other initiatives
- The expiry of Eskom's exemption from the Preferential Procurement Policy Framework Act (PPPFA) has required a review and amendment to a number of commodity strategies and targets
- Eskom and its recognised trade unions are currently involved in a wage dispute

Operational challenges

- Delivering on contracted electrification connections, which are substantially higher than previous years



Early childhood development is one of the key focus areas for the Eskom Development Foundation

Performance on strategic objectives

continued

Maximising Eskom's socio-economic contribution

Eskom's supplier localisation drive is complemented by its corporate social investment, which aims to improve society at large through targeted direct investments into community education, health and developmental projects. Eskom's most direct and widespread contribution to social improvement is in the rollout of government's universal electrification programme.

Key performance indicators for maximising Eskom's socio-economic contribution

Indicator and unit	Actual half year to Sep 2013	Actual half year to Sep 2012	Actual year to Mar 2013
Corporate social investment, Rm committed	81.6	69.9	194.3
Job creation, number	38 423	32 478	35 759
Total number of electrification connections, number	53 600	32 216	144 558
Percentage of broad-based black empowerment spend against total measurable procurement spend ^{SC} , %	87.6	72.5	86.3
Local sourcing in procurement ^{SC,1} , %	62.4	88.6	80.2
Procurement from black owned entities, %	25.5	16.1	22.1
Procurement from black woman owned entities, %	6.2	4.0	4.7
Procurement from black youth owned entities ^{SC} , %	1.0	0.9	1.0

SC Indicator included in the shareholder compact.

1. Measures the local sourcing from the capital expansion projects.

Corporate social investment

The Eskom Development Foundation NPC is responsible for the corporate social investment strategy. While committed spend for corporate social investment initiatives was up in the six months to 30 September 2013 compared to the equivalent period last year, the spend was lower than budget as no new initiatives have been approved due to budgetary uncertainties.

Refer to www.eskom.co.za/csi for more information on Eskom's corporate social investment initiatives.

Localisation, job creation and skills development through the capital expansion programme

The annual target for local content in capital expansion contracts awarded is 52%.

During the six months to 30 September 2013, a total of 290 contracts were awarded in the capital expansion programme amounting to R2.6 billion (September 2012: R1.2 billion). The local content committed, from these awarded contracts in the capital expansion programme, amounted to R1.6 billion (September 2012: R1.0 billion).



Eskom's Medupi Leadership Initiative

The initiative, which is aimed at helping unskilled and semi-skilled workers find employment after completion of the power station project near Lephalale, is setting the precedent as the largest post-construction work opportunity programme of its kind in South Africa.

Eskom launched the Medupi Leadership Initiative in collaboration with its key partners in the Medupi project, including Murray & Roberts, Aveng, Alstom Africa, Hitachi Africa, Basil Read, LPS Consortium, Lesedi and Actom.

The initiative comprises job-enabling opportunities and job opportunity initiatives that Eskom, along with its partners, are funding. Sector Education and Training Authorities (Setas) have also committed to co-funding some courses.

Local supplier development includes skills development and job creation. Since capital expansion contracts started being awarded, a total of 8 009 (September 2012: 6 397) contractor employees have been trained in various trades.

Eskom B-BBEE attributable expenditure performance

Initiatives implemented to ensure B-BBEE compliance have been successful and have allowed Eskom to make significant progress in its procurement activities to its transformation objectives in this regard. The Eskom company's total measured procurement spend was R65.9 billion for the six months to 30 September 2013 (September 2012: R60.8 billion), of which R57.7 billion (September 2012: R44.1 billion) was attributable to B-BBEE.

Electrification

Approximately 4.4 million households have been electrified by Eskom within its supply area since 1991, when the electrification programme started. Meeting universal access to electricity targets depends on the availability of funding via the integrated national electrification programme. To accelerate the universal access programme the Department of Energy has increased its funding commencing this financial year.

Improving internal transformation

Eskom seeks a balanced workforce that taps into the knowledge and skills of all demographics of South Africa. This will support Eskom's objective of driving high performance and support the government in its objective of opening job opportunities to all South Africans.

Performance on strategic objectives

continued

Key performance indicators for improving internal transformation

Indicator and unit	Actual half year to Sep 2013	Actual half year to Sep 2012	Actual year to Mar 2013
Employment equity – disability (company) ^{SC}	2.6	2.4	2.6
Racial equity in senior management ^{SC} , % of black employees (company)	59.5	57.9	58.3
Racial equity in professionals and middle management ^{SC} , % of black employees (company)	70.5	68.7	69.6
Gender equity in senior management ^{SC} , % of female employees (company)	28.6	26.2	28.2
Gender equity – professionals and middle management ^{SC} , % of female employees (company)	35.5	33.9	34.6

SC Indicator included in the shareholder compact.

Employment equity and people with disabilities

The Eskom group employs 46 624 people including fixed term contractors. Post the MYPD 3 tariff determination by NERSA, it became apparent that Eskom cannot grow its headcount and strategies have been put in place to maintain the current headcount.

The current employment equity plan (signed in 2010) expired in March 2013. In consultation with the Department of Labour and organised labour, a decision was taken to extend the current plan by one year. The extension will enable sufficient time to do a proper analysis, development of and consultation on the long-term employment equity plan. This was signed by the chief executive, supported by the Unions and submitted to the Department of Labour.

There remains an opportunity to focus on the recruitment of designated groups at senior management, professionals and middle management. Actual performance at these levels is still below the targets.

The Eskom company currently has 1 107 employees with recognised disabilities (September 2012: 1 022 in the company). While the disability percentage of 2.6% is below target, it is still well above the national norm of 0.7% and the government's 2% target for the public service.

Eskom and its recognised trade unions are currently involved in a wage dispute, which has been referred to the CCMA for resolution. Even though the provision of electricity has been declared an essential service that prohibits employees from engaging in industrial action, employees on some Eskom sites embarked on various forms of unprotected industrial action. The interest arbitration is scheduled for the week of 25 to 29 November 2013 at the CCMA offices in Johannesburg.

Ensuring financial sustainability

Eskom's financial sustainability relies on being able to balance its revenue with its costs in a manner that allows for sustainable growth.

Group interim financial results, which have been extracted from the condensed interim financial statements for the period ended 30 September 2013 are provided in this report starting on page 66. Eskom's statutory annual financial statements for the year ended 31 March 2013 are available at <http://integratedreport.eskom.co.za/007>.

Operating highlights

- Successfully raised R8.3 billion cash from domestic bond issues and issued a \$1 billion international bond during July 2013
- The new EL30 inflation linked bond and the ES42 vanilla bond have been well received by the market

Operational challenges

- Bridging the R225 billion revenue shortfall resulting from the 8% MYPD 3 tariff increase
- The impact of the credit rating downgrades on the cost of and access to funding
- Eskom is required to comply with the provisions of the Preferential Procurement Policy Framework Act (PPPFA). However, these provisions are contradictory to World Bank procurement processes, which must be followed for all development funding institutions funded projects. Eskom has submitted an application for an exemption to the Preferential Procurement Policy Framework Act (PPPFA). All procurement for these projects is on hold until the decision is finalised



Wind turbine components for the Sere wind facility are offloaded at the Saldanha Bay harbour

Performance on strategic objectives

continued

Key performance indicators for ensuring financial sustainability

Indicator and unit	Actual half year to Sep 2013	Actual half year to Sep 2012	Actual year to Mar 2013
Company			
Cost of electricity (excluding depreciation) ^{SC} , R/MWh	500.27	428.41	496.35
Interest cover ^{SC} , ratio	2.27	1.27	0.27
Debt /equity (including long-term provisions) ^{SC} , ratio	1.84	1.74	1.96
FFO as % of total debt ^{SC} , %	8.68	9.15	8.55
Electricity revenue per kWh (including environmental levy), c/kWh	68.97	64.89	58.49
Electricity operating cost per kWh (including depreciation), c/kWh	55.29	47.01	54.15
Group			
Working capital ratio	0.89	1.01	0.68
Free funds from operations (FFO), Rm	23 323	22 257	18 110
Gross debt/EBITDA ratio	10.61	9.07	16.16
Debt service cover ratio	1.52	3.85	2.01

SC Indicator included in the shareholder compact.

Results of operations

Eskom has achieved a group net profit for the six months to 30 September 2013 of R12.2 billion (September 2012: R12.6 billion). The seasonality of Eskom's business should be considered when reviewing the half year results. Due to higher tariffs, higher energy demands and comparatively less maintenance activities conducted in winter, Eskom achieves higher profits in the first six months of the year.

The operating profit for the six months to 30 September 2013 before fair value gains and losses on embedded derivatives and net finance costs for the Eskom group was R17.0 billion (September 2012: R20.7 billion).

When compared to the same period last year, the 8.0% tariff increase (including the

environmental levy) granted by NERSA with effect from 1 April 2013 for non-municipal customers and from 1 July 2013 for municipal customers, resulted in a 6.3% average increase in electricity revenue per kWh.

Sales and revenue

Revenue for the group for the six months to 30 September 2013 was R77.8 billion (September 2012: R73.4 billion).

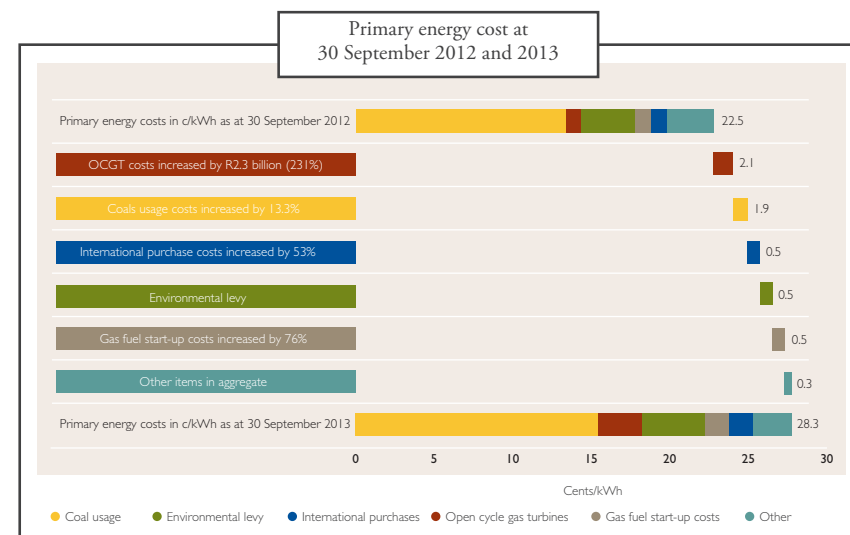
The sales of electricity for the six months to 30 September 2012 amounted to 110 659GWh, representing a decrease of 0.1% when compared to the prior comparative period (110 766GWh). Sales of electricity have been affected by a relatively mild winter.

Primary energy costs

The primary energy costs for the six months to 30 September 2013 for the group amounted to R31.3 billion (September 2012: R25.0 billion). The costs include the environmental levy of R4.4 billion paid to the government (September 2012: R3.8 billion).

The cost of primary energy as a percentage of electricity revenue was 41.0% (September 2012: 34.7%).

The cost of primary energy increased by 25.3% from 22.5c/kWh in the six months to 30 September 2012 to 28.3c/kWh for the six months to 30 September 2013:



Refer to the 'Managing supply-and-demand constraints' section on page 36 for further details regarding the use of open cycle gas turbines and to the section on 'Cross-border electricity sales and purchases' on page 39.

Operating costs

Group and company operating costs consist of the following:

Employee benefits

Group employee numbers, which include fixed term contractors increased by 1 711 employees

from 44 913 as at 30 September 2012 to 46 624 employees at 30 September 2013.

Group gross employee costs (before capitalisation) for the six months to 30 September 2013 amounted to R15.6 billion (September 2012: R14.0 billion). Group employee costs of R2.6 billion (September 2013: R2.3 billion) were capitalised to capital projects during the six months to 30 September 2013.

Performance on strategic objectives

continued

Arrear debt

Group arrear debt was 0.90% of external revenue for the six months to 30 September 2013 (September 2012: 0.66%). Refer to page 31 for details on the municipal and Soweto arrear debts.

Other operating expenses

Group other operating expenses for the six months to 30 September 2013 amounted to R9.1 billion, (September 2012: R10.0 billion). Other operating expenses consist primarily of repairs and maintenance and integrated demand management costs.

The company's gross repairs and maintenance expenditure before capitalisation and excluding employee benefit costs for the six months to 30 September 2013 was R9.5 billion (September 2012: R6.3 billion). The significant increase in repairs and maintenance costs are due to the generation sustainability programme and the fact that maintenance

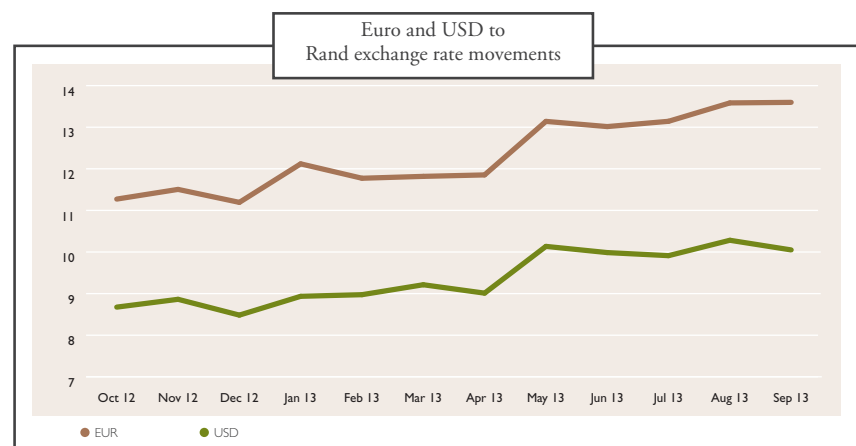
is now scheduled during the winter. Group repairs and maintenance costs of R3.0 billion (September 2012: R1.8 billion), that were classified as major overhauls, were capitalised. Please refer to page 30 for further details on the power plant maintenance initiatives.

Refer to page 36 for integrated demand management initiatives and costs that are included in 'other operating expenses'.

Net fair value loss on financial instruments, excluding embedded derivatives

The net fair value loss on financial instruments, excluding embedded derivatives, was R1.0 billion for the six months to 30 September 2013 (September 2012: R1.3 billion) for the group. The costs vary from period to period due to the timing of the placement of related procurement contracts and exchange rate fluctuations.

The euro and US dollar to rand exchange rate movements are presented on the graph below:



Gain on embedded derivatives

The net impact on the income statement of changes in the fair value of the embedded derivatives (relating to the remaining two special pricing agreements) for the group was a fair value gain for the six months to 30 September 2013 of R1.9 billion (September 2012: R0.7 billion). The embedded derivative liabilities for the group amounted to R9.6 billion (September 2012: R4.8 billion). The increase in the embedded derivative liabilities year on year, is mainly due to the decision at 31 March 2013, to account for the full term of the underlying special pricing agreement contracts.

The decrease of R1.9 billion in the embedded derivative liability from March 2013 to September 2013 is mainly due to changes in the USD:ZAR exchange rate and changes in interest rates.

Net finance cost

After capitalising borrowing costs and including unwinding of interest on provisions, the net finance charges for the group for the six months to 30 September 2013 was R1.9 billion (September 2012: R3.8 billion).

Gross finance income for the six months to 30 September 2013 was R1.1 billion (September 2012: R1.7 billion) for the group.

Gross finance cost for the group for the six months to 30 September 2013 was R7.6 billion (September 2012: R18.2 billion). As there was no change in the price path during the six months to 30 September 2013, no remeasurement of the government loan was required. Included in gross finance cost for the six months to 30 September 2012 was a remeasurement of the government loan of R9.6 billion, which further impacted the borrowing costs capitalised for the same period.

The borrowing costs capitalised for the group was R6.1 billion for the six months to 30 September 2013 (September 2012: R13.9 billion). Unwinding of interest for the group amounted to R1.4 billion (September 2012: R1.1 billion).

Taxation

The effective tax rate for the six months to 30 September 2013 was 28.4% for the group (September 2012: 28.5%), which is in line with the current statutory tax rate of 28%.

Liquidity and capital resources

Cash and cash equivalents together with liquid investment in securities, amounted to R43.2 billion as at 30 September 2013 (September 2012: R46.3 billion).

Cash flows from operating activities

The group's net cash inflow from operating activities for the six months to 30 September 2013 was R19.6 billion (September 2012: R18.2 billion). The cash generated from operations was offset by an increase in working capital since 31 March 2013, primarily due to the increase in debtors due to the tariff increase of 8% and higher winter tariffs. The group's working-capital ratio was 0.89 as at 30 September 2013 compared to 0.68 as at 31 March 2013.

Cash flows used in investing activities

Cash flows used in investing activities for the six months to 30 September 2013 were R24.5 billion (September 2012: R26.7 billion) for the group. The group capital expenditure cash flows included in this line item, excluding capitalised interest, amounted to R23.2 billion (September 2012: R26.2 billion) primarily due to the progress of the capital expansion programme. For the detail on the capital expenditure incurred for the six months to 30 September 2013 refer to the table on page 43.

Performance on strategic objectives

continued

Cash flows from financing activities

The net cash inflows from financing activities for the six months to 30 September 2013 were R24.5 billion (September 2012: R16.4 billion) for the group. The raising of borrowings and the issuing of securities have been managed to match the reduced capital expenditure. The debt-to-equity ratio for the group (including long-term provisions) was 1.72 as at 30 September 2013 (September 2012: 1.63).

The free funds from operations as a percentage of gross debt was 8.86% for the group as at 30 September 2013 (September 2012: 9.39%). The gross debt/EBITDA for the group was 10.61% (September 2012: 9.07%).

Funding progress

Treasury continues to focus its activities on the funding requirements to the end of the committed capacity expansion programme

and the maintenance of a liquidity buffer of R20 billion. The borrowing programme is being executed in terms of Eskom's current approved corporate plan.

Funds for the next 12 to 18 months will be sourced mainly from a combination of issuing domestic and international bonds, Export Credit Agency backed financing, development financing institutions financing and the domestic commercial paper market. New opportunities from alternative funding sources and products, such as preference share type funding, syndicated loans and project-based funding will also be explored and considered to complement the current sources. During the period under review Eskom created a new medium-term note programme for international bond issues and during July 2013 raised USD1 billion in the international market.

R300 billion borrowing programme as at 30 September 2013

Sources	Funding Sources Apr 2010 – Sep 2013	Secured to date	Drawdowns Apr 2010 – Mar 2013	Drawdowns Apr 2013 – Sep 2013	Drawdowns to date	Amount of secured supported by the government
Bonds	90.0	60.9	44.8	16.1	60.9	38.2
Commercial paper ¹	70.0	70.0	30.0	5.0	35.0	–
Export credit agencies	32.9	32.9	19.4	1.1	20.5	–
World Bank	27.8	27.8	8.6	1.7	10.3	27.8
AfDB	20.9	20.9	13.3	0.9	14.2	20.9
Development Bank of Southern Africa	15.0	15.0	7.0	1.0	8.0	–
Shareholder loan	20.0	20.0	20.0	–	20.0	20.0
Other/new sources	23.4	18.4	1.0	3.3	4.3	4.9
Totals (R billion)	300	265.9	144.1	29.1	173.2	111.8
Percentages		88.6			65.1	42.1
		(% of R300bn)			(% of secured)	(% of secured)

1. Commercial paper is issued for up to one year and then redeemed and reissued for the same net amount. The commercial paper is thus by definition not fully secured for the full period, however, Eskom's long-term observations and past trends support a high level of confidence that Eskom will be able to rollout the redemptions each year. For this reason, the gross value of the commercial paper is shown under the 'secured' column in the borrowing programme table above.

As at 30 September 2013, R266 billion or 88.6% of the R300 billion borrowing programme had been secured. The R300 billion borrowing programme is based on the original funding requirements as at April 2010 and covers the period 1 April 2010 to 31 March 2017. Further funding requirements, including those resulting from the lower than expected MYPD 3 tariff determination are not included in this borrowing programme.

As at the end of September 2013, Eskom had sufficient liquidity reserves, which in terms of the latest projections and assuming no further drawdowns, would cover Eskom for approximately 150 days.

Further major focus areas, from a new funding point of view includes:

- Co-financing by development finance institutions such as the AFD (Agence Française de Développement)



The newly constructed ash dam at Medupi power station is funded by the World Bank

Performance on strategic objectives

continued

- KFW and the European Investment Bank to finance the concentrating solar plant project
- Monitoring the effects of the funding initiatives on the ratios that impact on Eskom's credit ratings
- Domestic bond markets where Eskom was able to raise R8.3 billion gross funding during the six months to 30 September 2013

In addition, Eskom has supplemented its vanilla bond issuance with the inflation linked instruments. At the end of June 2013, Eskom reached the issue limit of the EL29 inflation-linked bond, currently capped at a maximum

of R3 billion nominal issuance and commenced with the issue of a new EL30 inflation-linked bond from July 2013. Eskom's base assumption on commercial paper is that as the issues mature, based both on investor appetite and the current market conditions, Eskom will roll them over to a new maturity date and ultimately refinance the projected commercial paper issuance before or by each year-end. During the 2013/14 financial year, Eskom aims to start increasing the commercial paper issuance towards R15 billion, which will then be rolled annually.

Eskom's stand-alone credit ratings as at 14 October 2013

Rating	Standard & Poor's	Moody's	Fitch Local Currency	Fitch National scale
Foreign currency	BBB	Baa3	–	AA+
Local currency	BBB	Baa3	BBB+	F1+
Stand-alone	b-	bl	B	None
Outlook	Negative	Negative	Stable	Stable
Action date	14 Oct 2013	19 Jul 2013	11 Jan 2013	16 Jan 2013
Affirmation date	14 Oct 2013	19 Jul 2013	2 Aug 2013	2 Aug 2013

Standard & Poor's

The 'BBB' rating reflects Standard & Poor's opinion that there is an 'extremely high' likelihood that the Republic of South Africa would provide timely and sufficient extraordinary support to Eskom in the event of financial distress. On 14 October 2013, Standard & Poor's downgraded the stand-alone credit profile of Eskom to 'b-' (from 'b') which revises the company's business risk profile to 'weak' from 'fair'. The 'BBB' foreign and local currency ratings were affirmed as was the 'highly leveraged' financial risk profile.

Rating rationale:

Business risk: fair	Financial risk: highly leveraged
RSA's dominant electricity utility	High leverage due to largely debt-funded capital expenditure programme
Regulated revenues across the electricity value chain	Ratios likely to remain weak due to challenging regulatory determination for 2013/14 – 2017/18
Execution risk on a very large capital expenditure programme	Substantial funding requirements from 2015/16 onward
Rising regulatory risk as tariff increases are being curtailed	
Elevated operational risk due to tight electricity reserve margin in South Africa	

The downward revision of Eskom's stand-alone credit profile reflects the weakening of Eskom's credit metrics due to its largely debt funded capital expansion programme being insufficiently covered by tariff increases and due to rising operational costs. This revision also reflects Standard & Poor's view of the rising business risk in light of regulatory and operating risks and weakened profitability owing to an unfavourable regulatory decision. The negative outlook reflects the possibility of a downgrade if Eskom's Standard & Poor's weakens further; if the Sovereign is downgraded; or if Standard & Poor's revise their assessment of the likelihood of extraordinary government support.

Moody's

On 19 July 2013, Moody's reaffirmed Eskom's Baa3 rating and a negative outlook was maintained. The affirmation of the Baa3 rating with a negative outlook reflects Eskom's continued critical strategic and economic importance to the government of South Africa, as well as its engagement in a significant investment programme to expand and upgrade the country's electricity infrastructure to meet the country's changing power needs.

Moody's revised downwards its assessment of the standalone credit quality of Eskom (expressed as a baseline credit assessment, or BCA) to 'bl' from 'ba3'. This reflects:

- greater uncertainty over the evolution of Eskom's investment programme and financial profile over the medium term
- limited potential for improvement in Eskom's weak financial metrics, as had previously been targeted by Eskom, following the conclusion of the tougher MYPD 3 review for the period April 2013 – March 2017
- the significant challenges facing Eskom in relation to the management of operating costs in the context of a very stretched electricity system until new generation comes on-stream and the execution of a large investment programme

While Moody's expect Eskom to take measures as far as possible to limit the impact of lower tariffs, manage the operating and capital costs, and engage with both the shareholder and the regulator to find appropriate solutions in this respect, nonetheless, given the committed capital expansion programme, Eskom's financial profile could remain rather stretched for the foreseeable future.

Performance on strategic objectives

continued

The negative outlook on the ratings is in line with the outlook on the South African government's recently affirmed ratings.

Fitch

On 2 August 2013, Fitch affirmed Eskom's long-term local currency Issuer Default Rating (IDR) rating at 'BBB+'. The national long-term and short-term ratings were also affirmed at 'AA+(zaf)' and 'F1+(zaf)', respectively. The outlook on the IDR and the national long-term rating remains stable.

The affirmation continues to reflect the alignment of Eskom's ratings with those of the Sovereign. In Fitch's view, the ties between Eskom and the shareholder are likely to remain strong in the foreseeable future.

Fitch view the unsupported creditworthiness of Eskom as commensurate with the 'B' rating category, reflecting the constraint of significant and increasing leverage as a result of the recent tariff determination and operational cost pressure, as well as the execution risks associated with the capital expansion programme.

Fitch's view of future developments that could lead to positive rating actions for Eskom include a positive action on the Sovereign's rating, providing that the strength of the parent subsidiary linkage does not weaken.

The rating agency also maintain that a decline in government support or a negative rating action on the Sovereign rating would likely result in a negative rating action for Eskom; and that failure to achieve more cost-reflective tariffs, in the absence of increased government support, resulting in an unsustainable financial profile and putting the company's ability to service its debt at risk, may also result in a negative rating action.



Eskom has mobile units to serve customers in outlying areas



Group interim financial results

Group interim financial results for the six months ended 30 September 2013

The group interim financial results have been extracted from the condensed interim financial statements for the period ended 30 September 2013 that have been prepared in accordance with the recognition and measurement requirements of International Financial Reporting Standards (IFRS), the presentation and disclosure requirements of IAS 34 *Interim Financial Reporting*, and in the manner required by the Companies Act of South Africa, 71 of 2008. The condensed group interim financial statements have been prepared under the supervision of the acting chief financial officer, CM Henry CA(SA). These condensed interim financial statements have been reviewed by the independent auditors KPMG Inc and SizweNtsalubaGobodo Inc and have been approved by the board of directors on 28 November 2013. The condensed group interim financial statements, with the review opinion issued by the independent auditors, are available at <http://integratedreport.eskom.co.za/008>.

Currency of financial statements

The condensed group interim financial statements are expressed in South African rand (R).

The following are approximate values of R1.00 to the selected currencies and one unit of the selected currencies to the rand:

	R1.00 to the selected currencies			One unit of the selected currency to the rand		
	30 September 2013	31 March 2013	30 September 2012	30 September 2013	31 March 2013	30 September 2012
EUR	0.07	0.08	0.09	13.60	11.82	10.68
USD	0.10	0.11	0.12	10.05	9.21	8.28
GBP	0.06	0.07	0.07	16.22	13.96	13.38
CHF	0.09	0.10	0.11	11.11	9.70	8.83
JPY	10.00	10.00	9.09	0.10	0.10	0.11

Currency	Abbreviation
Euro	EUR
United States dollar	USD
Pound sterling (United Kingdom)	GBP
Swiss franc	CHF
Japanese yen	JPY

Condensed group statement of financial position

at 30 September 2013

	Reviewed 30 September 2013 Rm	Audited 31 March 2013 Rm	Reviewed 30 September 2012 Rm
Assets			
Non-current assets	402 416	378 775	358 920
Property, plant and equipment and intangible assets	366 366	344 271	327 400
Investment in equity-accounted investees	322	296	283
Future fuel supplies	7 741	8 121	6 631
Investment in securities	8 339	8 574	10 316
Loans receivable	8 716	8 425	8 187
Derivatives held for risk management	7 672	5 420	2 615
Other assets	3 260	3 668	3 488
Current assets	79 241	53 241	73 154
Inventories	14 584	12 251	10 855
Investment in securities	4 659	8 776	8 609
Loans receivable	75	114	107
Derivatives held for risk management	3 709	1 906	539
Trade and other receivables	17 477	14 925	19 072
Other assets	8 544	4 649	6 572
Cash and cash equivalents	30 193	10 620	27 400
Non-current assets held-for-sale	8	8	14
Total assets	481 665	432 024	432 088

Condensed group statement of financial position *continued*

at 30 September 2013

	Reviewed 30 September 2013 Rm	Audited 31 March 2013 Rm	Reviewed 30 September 2012 Rm
Equity			
Capital and reserves attributable to owner of the company	123 446	109 139	115 666
Liabilities	294 950	264 446	262 680
Non-current liabilities	124 879	106 526	97 854
Debt securities	95 582	84 250	100 706
Borrowings	8 211	10 095	3 609
Embedded derivatives	13	840	1 500
Derivatives held for risk management	21 354	15 806	18 758
Deferred tax	11 989	10 907	10 138
Deferred income	11 099	10 282	9 180
Employee benefit obligations	17 334	20 087	15 847
Provisions	4 489	5 653	5 088
Other liabilities	63 269	58 439	53 742
Current liabilities	2 604	2 517	7 937
Debt securities	13 715	9 663	6 863
Borrowings	1 402	1 386	1 232
Embedded derivatives	621	572	2 763
Derivatives held for risk management	3 169	3 629	3 780
Employee benefit obligations	6 779	6 648	2 162
Provisions	26 354	28 999	23 115
Trade and other payables	–	9	13
Taxation	8 625	5 016	5 877
Other liabilities	358 219	322 885	316 422
Total liabilities	481 665	432 024	432 088
Total equity and liabilities	481 665	432 024	432 088

Condensed group income statement

for the six months ended 30 September 2013

	Reviewed six months ended 30 September 2013 Rm	Reviewed six months ended 30 September 2012 Rm	Audited year ended 31 March 2013 Rm
Revenue	77 815	73 368	128 869
Primary energy ¹	(31 266)	(24 973)	(60 748)
Net employee benefit expense	(12 989)	(11 628)	(23 599)
Depreciation and amortisation expense	(5 920)	(4 722)	(9 968)
Net impairment loss	(682)	(486)	(1 011)
Other operating expenses	(9 111)	(10 045)	(23 123)
Operating profit before net fair value loss and net finance (cost)/income	17 847	21 514	10 420
Other income	197	516	1 155
Net fair value loss on financial instruments, excluding embedded derivatives	(998)	(1 292)	(1 655)
Net fair value gain/(loss) on embedded derivatives	1 868	698	(5 942)
Operating profit before net finance (cost)/ income	18 914	21 436	3 978
Net finance (cost)/ income	(1 853)	(3 785)	3 027
Share of profit of equity-accounted investees, net of tax	26	22	35
Profit before tax	17 087	17 673	7 040
Income tax	(4 846)	(5 044)	(1 857)
Profit for the period	12 241	12 629	5 183
Attributable to:			
Owner of the company	12 241	12 629	5 183

¹ Primary energy relates primarily to the acquisition of coal, uranium, water, gas and diesel that are used in the generation of electricity together with the environmental levy.

Condensed group statement of cash flows

for the six months ended 30 September 2013

	Reviewed six months ended 30 September 2013 Rm	Reviewed six months ended 30 September 2012 Rm	Audited year ended 31 March 2013 Rm
Cash flows from operating activities			
Profit before tax	17 087	17 673	7 040
Adjustment for non-cash items	8 876	12 300	22 620
Changes in working capital	(12 256)	(10 092)	(828)
Cash generated from operations	13 707	19 881	28 832
Net cash flows (used in)/from financial trading assets	(3 317)	(854)	1 701
Net cash flows from/(used in) financial trading liabilities	4 853	(173)	(2 317)
Net cash flows from/(used in) current derivatives held for risk management	4 469	(586)	(331)
Income taxes paid	(87)	(86)	(216)
Net cash from operating activities	19 625	18 182	27 669
Cash flows used in investing activities			
Proceeds from disposal of property, plant and equipment	51	45	36
Acquisitions of property, plant and equipment and intangible assets	(21 639)	(25 244)	(55 381)
Expenditure on future fuel supplies	(1 444)	(926)	(2 533)
Increase in non-current loans receivable	(291)	(752)	(990)
Other cash flows from investing activities	(1 197)	148	460
Net cash used in investing activities	(24 520)	(26 729)	(58 408)
Cash flows from financing activities			
Debt raised	29 475	17 804	31 120
Debt repaid	(4 819)	(2 021)	(7 149)
Decrease in investment in securities	4 050	3 756	5 047
Decrease in finance lease liabilities	(14)	(5)	(31)
Interest received	1 257	1 470	2 765
Interest paid	(5 481)	(4 632)	(9 968)
Net cash from financing activities	24 468	16 372	21 784
Net increase/(decrease) in cash and cash equivalents	19 573	7 825	(8 955)
Cash and cash equivalents at beginning of the period	10 620	19 450	19 450
Cash and cash equivalents at beginning of period attributable to non-current assets held-for-sale	–	125	125
Cash and cash equivalents at end of the period	30 193	27 400	10 620



Appendices

Appendices

Abbreviations, acronyms and glossary

For a list of abbreviations, acronyms and a glossary of terms used in this report refer to <http://integratedreport.eskom.co.za/009>.

Telephone		Websites and email	
Eskom head office	+27 11 800 8111	Eskom website	www.eskom.co.za contact@eskom.co.za
Eskom Strategic Marketing	+27 11 800 2323	Eskom integrated report	http://integratedreport.eskom.co.za/010
Eskom media desk	+27 11 800 3304 +27 11 800 3309 +27 82 805 7278	Eskom media desk	mediadesk@eskom.co.za
Eskom Development Foundation	+27 11 800 6128	Eskom Development Foundation	www.eskom.co.za/csi csi@eskom.co.za
Investor relations	+27 11 800 2775	Investor relations	lerato.mashinini@eskom.co.za
Ethics office advisory service	+27 11 800 3700 +27 11 800 4816 +27 11 800 3187	Ethics office advisory service	ethics@eskom.co.za
Confidential reporting line	0800 11 27 22	Eskom environmental	envhelp@eskom.co.za
National sharecall number	08600 ESKOM (08600 37566)	Promotion of Access to Information Act	PAIA@eskom.co.za
Physical address		Postal address	
Eskom Megawatt Park 2 Maxwell Drive Sunninghill Sandton 2157		Eskom PO Box 1091 Johannesburg 2000	
Eskom Holdings Secretariat Annamarie van der Merwe (Interim Company Secretary) PO Box 1091 Johannesburg 2000		Eskom Holdings SOC Limited Company registration number: 2002/015527/06	



www.eskom.co.za