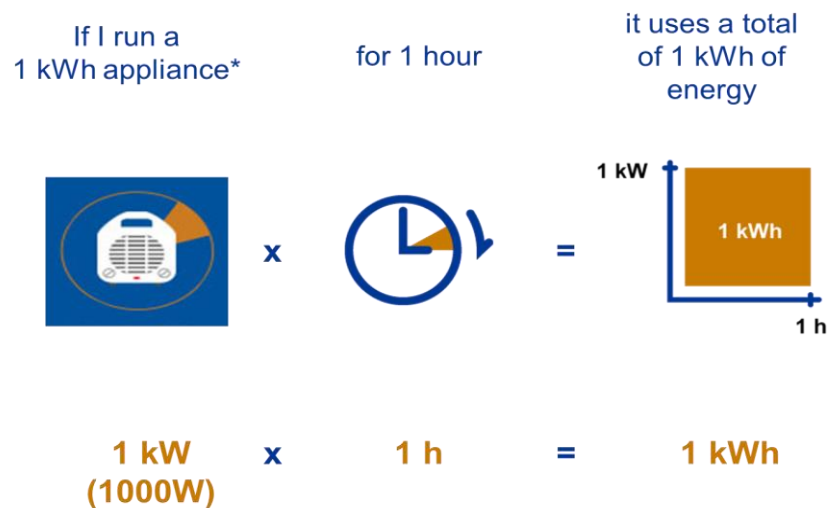


How to calculate your home heating costs

By being electricity smart, you and thousands of other households across South Africa – will help to balance the supply and demand of electricity and make sure there is enough electricity for everyone.

How to calculate you heating cost

Your electricity bill lists the units (kilowatt hours) you've used to do all the things you do in your home, during a specific period. Every electrical appliance, including heaters, needs a certain amount of energy to work. This amount depends on the wattage (appliance power rating) of the appliance and the number of hours it works, for example:



If you use a **1000 Watt heater** for **1 hour daily** for **30 days**, you would use **30kWh per month**, so at an average cost of electricity of **R1.67**, it will cost you **R50.06 per month**.