

A decorative graphic on the left side of the slide, consisting of four overlapping circular frames. The top frame shows solar panels and industrial chimneys. The middle frame shows a large industrial facility with several tall cooling towers and a body of water. The bottom-left frame shows a close-up of solar panels. The bottom-right frame shows a white wind turbine on a green field under a cloudy sky.

Eskom Land Leasing Programme

Date: 14 October 2022

- In response to the President's call for "an ambitious, bold and urgent response to the energy crisis", Eskom has piloted the the commercial lease and use of land parcels at two of its power stations in Mpumalanga province for the construction of new clean energy generation capacity.
- By making Eskom land available close to the power stations, where there is sufficient grid capacity, Eskom taken an innovative step to find the quickest way possible and within our scope of influence to boost the country's generation capacity
- Eskom's land leasing programme is a first of its kind and can be used as a case study in the electricity supply industry (ESI) in terms of partnering with private electricity generators to accelerate the connection of additional capacity to the national grid to improve the reliability of supply.
- The fact that these land leases will attract an estimated investment of some R20 billion to areas traditionally associated with coal-fired electricity generation makes this a compelling proof point for the just energy transition to a lower carbon economy

The following are the main objectives of the land leasing programme:

- To support Government in strengthening electricity generation. Our intent is to get megawatts on the grid as quickly as possible.
- To position Eskom as a solutions driven company via the land leasing project to accelerate generation capacity in order to restore reliable electricity supply for the country – to reduce instances and duration of load-shedding
- To fast track the introduction of renewable energy sources to the country's energy mix, linked to the JET programme.
- To assist IPPs by proving land and giving them easier access to the grid to evacuate the power.

The objective is to accelerate the connection of additional capacity to the national grid to improve the reliability of supply and to participate in the open energy market

- The first round of land parcels identified around Majuba and Tutuka Power Stations were issued to the market on 8 April 2022 and closed on 17 May 2022. Evaluations commenced on 18 May 2022, and a mandate to negotiate and conclude agreements was approved on 22 June 2022.
- Tenderer have to be an active Independent Power Producer.
- Eskom considered the MWs to be generated, time to connect to the grid, confirmation that the plant could operate for 20 years and the pricing.

Successful Independent Power Producers in Phase 1

25 – 30-year lease contracts are being concluded with 4 Independent Power Producers. At Majuba there are **13 farm portions with a total size of 3 850 hectares**. At Tutuka there are 8 farm portions with a total size of 2 334 hectares. Collectively, electricity to the extent of 2000 MW will be produced once the IPP projects on the sites are fully developed.

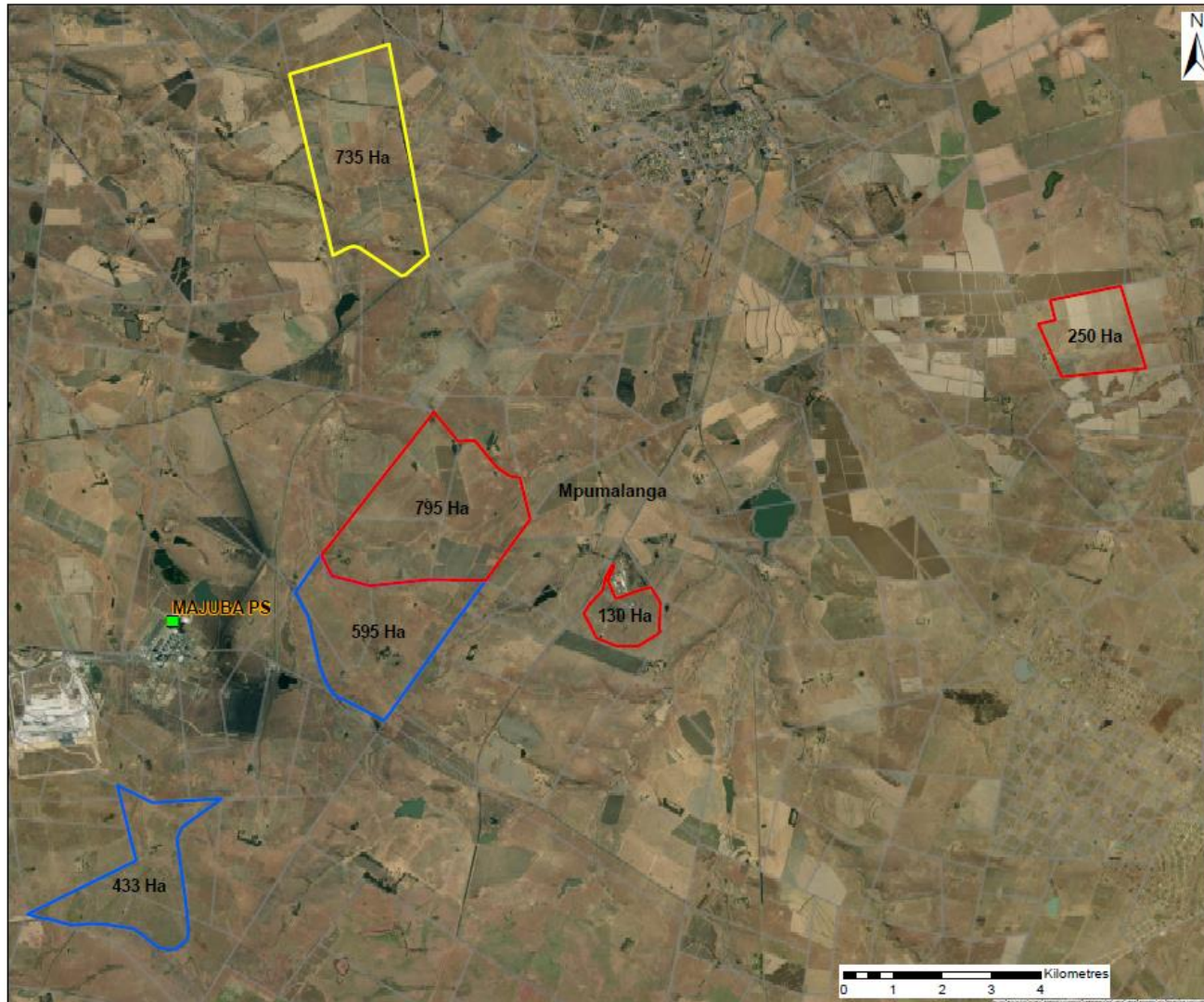
The successful bidders are:

- HDF Energy South Africa Pty Limited
- Red Rocket SA Pty Limited
- Sola Group (Pty) Ltd
- Mainstream Renewable Power Developments (Pty) Ltd



Land allocations - Majuba

MAJUBA AND SURROUNDING AREA



Legend

- Tutuke Presentation
- HDF Energy SA (Pty)
- SA Mainstream Renewable Power (Pty) Ltd
- Sola Assets (Pty) Ltd
- Presentation Boundary

DESCRIPTION: LEASING OF LAND TO IPP'S IN THE MAJUBA AND SURROUNDING AREA

DATE: 2022/10/11
VERSION: 1

SCALE: 1:27 000
DATUM: D Hartebeesthoek 1994
PROJECTION: GCS Hartebeesthoek 1994
UNITS: Degree

CREATED BY: Buhle Nedzungeni
REVIEWED BY: Tinkle Holi

CLIENT: Tinkle Holi

This map has been compiled by the Eskom GIS CoE to the best of their knowledge. However, since various data sources have been used, the GIS CoE cannot accept responsibility for any inaccuracies.
Copyright © GIS CoE: Eskom 2018

Land allocations - Tutuka

TUTUKA AND SURROUNDING AREA



Legend

- Tutuka Powerstation
- HDF Energy SA (Pty) Ltd
- SA Mainstream Renewable Power (Pty) Ltd
- Red Rocket SA (Pty) Ltd
- Sola Assets (Pty) Ltd
- Powerstation Boundary

DESCRIPTION: LEASING OF LAND TO IPP'S IN THE TUTUKA AND SURROUNDING AREAS

DATE: 2022/09/27

VERSION: 1

SCALE: 1:32 000

DATUM: D Hartebeesthoek 1994

PROJECTION: GCS Hartebeesthoek 1994

UNITS: Degree

CREATED BY: Buhle Nedzungeni

REVIEWED BY: Tinkie Holl

CLIENT: Tinkie Holl

This map has been compiled by the ESKOM GIS CoE to the best of their knowledge. However, since various data sources have been used, the GIS CoE cannot accept responsibility for any inaccuracies. Copyright © GIS CoE ESKOM 2018