	INCWAJANA YE-PAIA	Eskom Holdings SOC LTD
---	-------------------	------------------------



INCWAJANA YE-PAIA

Kwenziwe ngaphansi kwesigaba 14 soMthetho Wokukhuthaza Ukutholakala Kolwazi 2 ka 2000 (njengoba uchtshiyelwe)

28/08/2025

USUKU

LOKUQALISA:

28/08/2028

USUKU

LOKUVUSELELA:

Isihloko **Incwajana ye-PAIA**

o :

Ukuhlonza **559-993009770**
amadokhumenti:

Inombolo yenkomba **: n.v.t.**
ehlukile:

Indawo yokusebenza: **Eskom Holdings SOC Ltd**

Indawo yokusebenzela: **Regs- en Nakoming**

Ukubuyekeza: **03**

Inombolo yamakhasi: **28**

Usuku Lokubuyekeza **Agasti 2028**

Olulandelayo:

Ukwehlukani **Ukudalulwa Okulawulwayo**
kwasigaba
sokudalulwa:

OKUQUKETHWE Yile ncwajana

1. Uhlu lwezifinyezo4
2. Injongo Yencwajana Ye-PAIA.....5
3. Ukusungulwa kanye nesibopho se-Eskom Holdings SOC Ltd 6
4. Isakhiwo se-Eskom Holdings SOC Ltd nemisebenzi yayo.....7-11
5. Imininingwane ebalulekile yokuxhumana ukuze uthole ukwaziswa.....11-12
6. Amakhambi atholakalayo kumuntu ocelayo.....12-13
7. Isiqondiso sendlela yokusebenzisa i-PAIA nokufinyelela esiqondisweni13-15
8. Incazelo yezihloko i-Eskom Holdings SOC Ltd egcina ulwazi ngazo..... 15
9. Isaziso solwazi olutholakale ngokuzenzakalela16
10. Izinsiza ezitholakala emphakathini nokuthi ungazithola kanjani.....17
11. Ukuzibandakanya okuphawulekayo ekwakhiweni kwenqubomgomo.....17-19
12. Ukusetshenziswa kolwazi lomuntu siqu.....19-27
13. Ukutholakala kwencwajana ye-PAIA.....27
14. Ukuvuselelwa kwencwajana ye-PAIA.....28

1. UHLU LWEZIFUSHANISO NEZINCAZELO ZAZO

1.1 "GCE" Iqembu Isikhulu esiphezulu

1.2 "DIO" Isekela Lomphathi Wezokwaziswa

1.3 "IO" Isikhulu Sokwaziswa

1.4 "UNgqongqoshe" UNgqongqoshe Wezobulungiswa Nezinsizakalo Zokulungisa

1.5 "PAIA" Ukukhuthaza Ukutholakala Kolwazi Umthetho No. 2 ka 2000 njengoba uhitshiyelwe

1.6 "PFMA" Umthetho Wokuphathwa Kwezimali Zomphakathi No. 1 ka 1999

okuguquliwe

1.6.1 "POPIA" Umthetho Wokuvikelwa Kwemininingwane Yomuntu No. 4 ka-2013

1.7 "Umlawuli" Umlawuli Wolwazi

2. INJONGO YENCWAJANA YE-PAIA

Le ncwadi ye-PAIA iwusizo emphakathini–

2.1 ukuhlola uhlobo lwamarekhodi okungenzeka ukuthi asevele atholakala kwa-Eskom Holdings SOC Ltd ("**Eskom**") ngaphandle kwesidingo sokufaka isicelo esisemthethweni se-PAIA;

2.2 ukuthola ukuqonda ukuthi ungacela kanjani ukufinyelela kwirekhodi lika-Eskom;

2.3 ukufinyelela kuyo yonke imininingwane efanele yokuxhumana yabantu abazosiza umphakathi ngamarekhodi afuna ukufinyelela kuwo;

2.4 ukuqaphela zonke izindlela zomthetho ezitholakala kwabakwa-Eskom mayelana nezicelo zokufinyelela kumarekhodi, ngaphambi kokuthinta uMlawuli noma izinkantolo;

2.5 ngokunikeza incazelo yezinsiza ezitholakala kumalungu omphakathi e-Eskom nokuthi angafinyelela kanjani kulezo zinsiza;

2.6 ngokunikeza incazelo yomhlahlandlela wokusebenzisa i-PAIA, njengoba ubuyekezwe nguMlawuli, nokuthi ungafinyelela kanjani kuwo;

2.7 ngokuchaza ukuthi ngabe i-Eskom izocubungula imininingwane yomuntu, kanye nenhloso yokucubungula imininingwane yomuntu;

2.8 ngoba inikeza ulwazi kanye nencazelo yezigaba zabantu okuqondene nabo kanye nolwazi noma izigaba zolwazi ezihlobene nabo;

2.9 ukuthola ukuthi ngabe i-Eskom ihlela ukudlulisa noma ukucubungula ulwazi lomuntu siqu ngaphandle kweRiphabhuliki yaseNingizimu Afrika kanye nabamukeli noma izigaba zabamukeli ulwazi lomuntu siqu olungase ludluliselwe kubo; futhi

2.10 ukwazi ukuthi i-Eskom inezinyathelo zokuphepha ezifanele yini ukuqinisekisa ubumfihlo, ubuqotho nokutholakala kolwazi lomuntu siqu oluzocutshungulwa.

3. UKUSUNGULWA NEMITHETHO YE-ESKOM HOLDINGS SOC LTD.

3.1. I-Esko Holdings SOC Ltd yinkampani ephethwe nguhulumeni (SOC) njengoba kuchazwe yi-Companies Act 71 ka-2008. Ingumnikazi ophela kaHulumeni waseNingizimu Afrika, kanti uNgqongqoshe Wezamadla Nokuphakelwa Kwezidingo Zabantu ungumnikazi wamasheya. I-Eskom isebenza kulo lonke uchungechunge lwamadla kagesi, ihlinzeka ngezinsizakalo zokukhiqiza, ukudlulisa kanye nokusabalalisa ngaphakathi kweNingizimu Afrika, futhi ibamba iqhaza ekuhwebeni ugesi ngaphakathi kweNhlango Yentuthuko YaseNingizimu Afrika (SADC).

3.2. U-Eskom unomsebenzi ophindwe kabili wokuthuthukisa izinhloso zombili ezentengiselwano nezomnotho. Lokhu kuqinisekisa ukuthi inkampani ihlala ithembekile futhi isesimweni esihle ngokwezimali ngenkathi ifaka isandla ekuhfuleni komnotho waseNingizimu Afrika futhi iguqukela ngokuzibophezela ekusaseni elincane lekhabhoni. Igunya lichazwe eMemorandumu Yokufakwa (i-MOI), enikezwe ibhodi lika-Eskom futhi yamukelwa ngu-Shareholder.

3.3. U-Eskom ulungise igunya lakhe, umbono kanye nomsebenzi wakhe ukuze ahole ekutholeni isiqondiso esiphela sesikhathi eside senhlangano. Lokhu kukhuthaza ukusimama kanye nomnikelo ka-Eskom embonini yokuhlinzeka ngogesi kusuka kwezobuchwepheshe, ezemvelo, ezenhlalo kanye nezimali.

3.4. Ngenkathi ukugxila kuka-Eskom kuwukuletha imiphumela yohlelo lokuguqula isimo, ukugxila okuhlosiwe kuzobekwa ekuqondiseni ukutshalwa kwezimali kwethu nezifiso zethu zesikhathi esizayo. Ngokushayela i-Just Energy Transition (JET), u-Eskom uzokwazi ukubhekana nezinsalelo zakhe eziningi esikhathini esifushane, ngenkathi eqinisekisa ukukhula kwesikhathi eside nokusimama. I-JET izosiza futhi ekusekeleni imigomo kazwelonke yokunciphisa ukukhishwa kwegesi ebamba ukushisa, ukukhuthaza ukudala imisebenzi ngokuqeqesha kabusha, nokukhuthaza ukukhula komnotho.

Inhloso enkulu yamasu ka-Eskom ukufaka isandla ekunikezelweni kukagesi ukuze kuhlangelelanise nesidingo esikhulayo, ukunciphisa kakhulu ukuncika kwezimali kuhulumeni waseNingizimu Afrika, kanye nokukhombisa umthelela omuhle kwezemvelo nakwezomnotho. Esikhathini esifushane kuya kwesimaphakathi, umzamo ogxile ekuthuthukiseni nasekusebenzeni kahle, kanye nasekubuyiseni imali, ubaluleke kakhulu. Ngokugxila emhlabeni wonke kanye nakuzwelonke ekunciphiseni i-decarbonisation, u-Eskom uzophinde aqale izinhlelo nezinhlelo zokusuka kancane kancane emisebenzini egxile kumafutha kuya emisebenzini yamadla ahlanzekile.

Ukwethulwa kobuchwepheshe obuvuselelekayo nobunye obuhlanzekile, kanye nokuvalwa okulindelekile kwezitshalo zamandla amalahle (~ 22 GW umthamo wamagama ngo-2035), kuzodinga ukuqiniswa okukhulu nokwandiswa kwengqalasizinda yokudlulisa, ngokuhambisana nezidingo zamandla ezibekwe yiTransmission Development Plan (TDP). U-Eskom kumele azibeke esimweni sokuphendula kule ndawo eguqukayo ngokwethula ubuchwepheshe bokwenza ngcono ukusebenza kahle, ukusungulwa komqhubi wesistimu yokusabalalisa ukuphatha nokuxhumanisa ukukhiqizwa okusatshalalisiwe njengomsizi ongathathi hlangothi wezimakethe ezivulekile, kanye nokubambisana okusebenzayo ukuxazulula izinselelo zokungakwazi ukukhokha nokukhokha kumasipala.

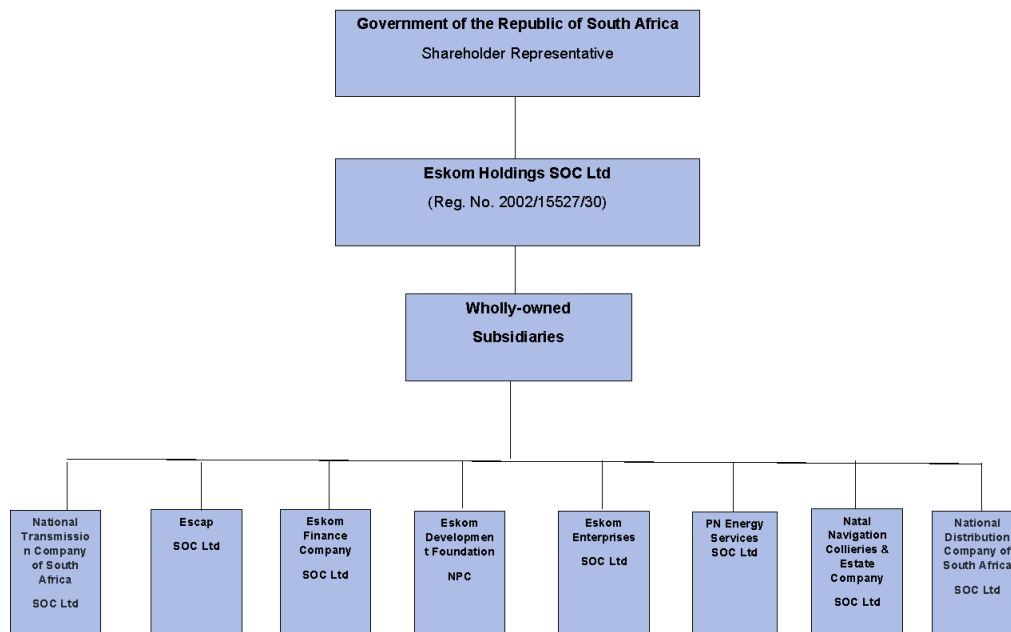
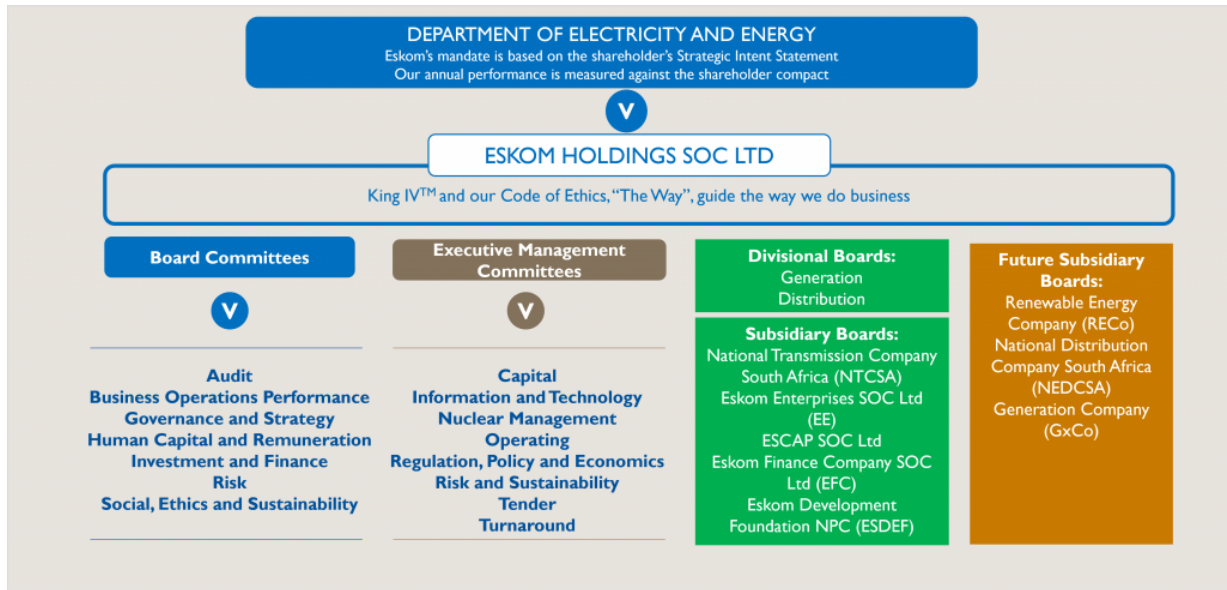
4. ISAKHIWO SE-ESKOM HOLDINGS SOC LTD NEMISEBENZI YASO

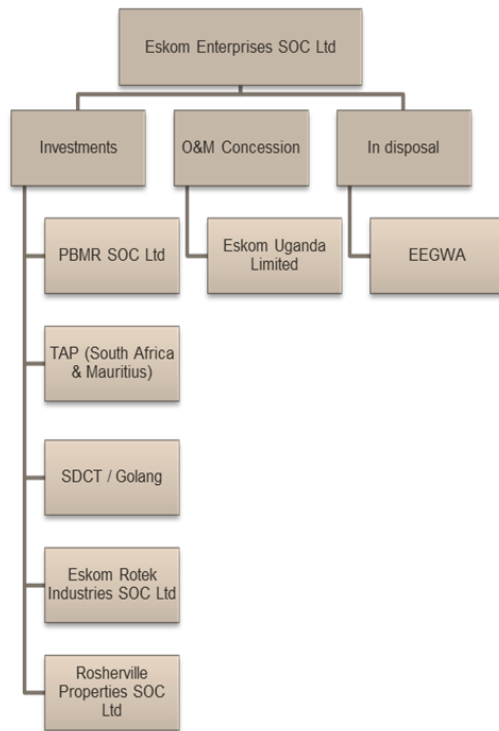
4.1. Ukwakheka

4.1.1. Ngemuva kokhetho lwentando yeningi lwaseNingizimu Afrika ngoMeyi 2024, ukuphatha kwesikhombisa kwaletsa izinguquko ezinkulu zesakhiwo, kufaka phakathi ukusungulwa koMnyango Wezamandla Namandla (DEE). Ngalokhu kuhlelwa kabusha, izinkampani eziphethwe nguhulumeni ezazingaphansi koMnyango Wezamabhizinisi Omphakathi (i-DPE) zabelwe oNgqongqoshe abafanele abahamba phambili, manje abanesibopho esigcwele sabaninimasheya.

Ngenxa yalokhu, uNgqongqoshe Wezamandla Nokuphehla Ugesi uthathe indima yommeleli wabaninimasheya kwa-Eskom. Njengomnyango wabaninimasheya, i-DEE ibeka okulindelwe nguHulumeni, iqaphe ukusebenza, futhi inqume inqubomgomo yamandla. Imibhalo esemqoka efana ne-Integrated Resource Plan (IRP), i-Electricity Regulation Act (ERA), kanye ne-Electricity Pricing Policy (EPP) ikhombisa ukuqondiswa komkhakha kagesi lapho i-Eskom isebenza khona.

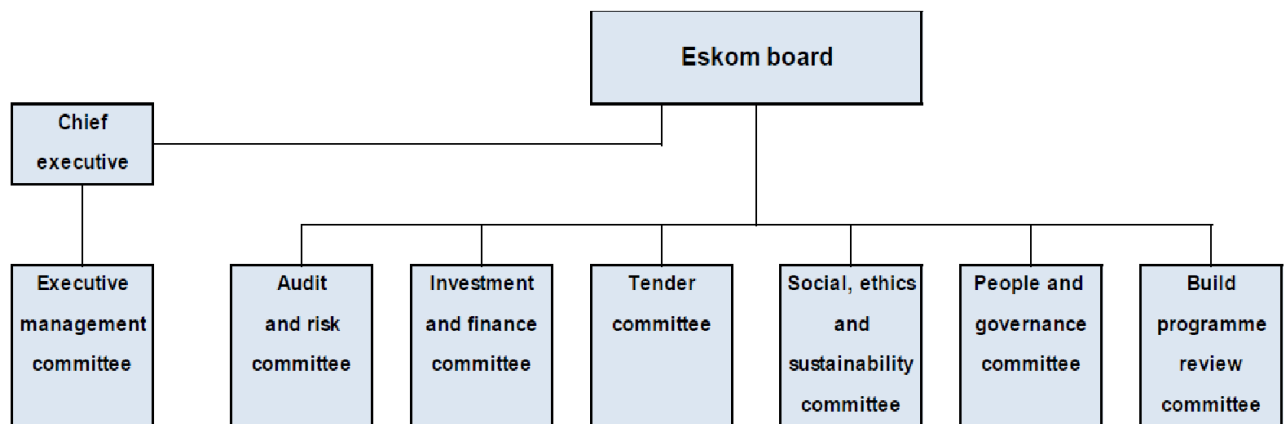
4.1.2. I-National Energy Regulator yaseNingizimu Afrika (i-NERSA) ilawula imisebenzi ka-Eskom, kufaka phakathi ukubekwa kwamanani kanye nokuvunyelwa, kuyilapho i-National Nuclear Regulator (i-NRR) ilawula ukuphepha kwe-nuclear e-Koeberg. I-Eskom iphinde ibe ngaphansi kokuqondiswa noma ukulawulwa kweminye iminyango eminingi kahulumeni (isib. UMgcinimafa Kazwelonke (i-NT), uMnyango Wokuhlela, Ukuqapha Nokuhlola, uMnyango Wezamahlathi, Ezokudoba Nezemvelo (i-DFFE), kanye namaKomidi ePhalamende.





*I-EEGWA-Eskom Enterprises Global West Africa Limited

AMAKOMIDI OMPHAKATHI

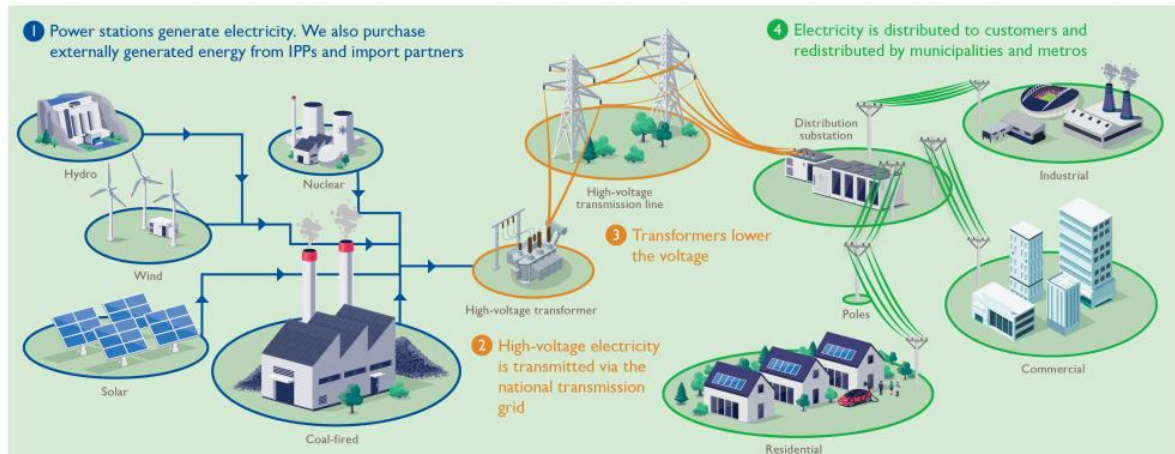


4.2 Ukusebenza

Imodeli yebhizinisi lika-Eskom, isakhiwo sokusebenza kanye nendlela yokusebenza

U-Eskom udala inani ngokukhiqiza, ukudlulisa, ukusabalalisa, ukuthenga nokuthengisa ugesi. Imodeli yakhe yokudala inani, enikezwe ngezansi, ikhombisa ukuthi iguqula kanjani okokufaka kube ugesi onikezwe amakhasimende. Amandla kagesi akhiqizwa ngokuguqula okokufaka okuvela endaweni yemvelo, njengamalahlle, uphethiloli, uphethiloli kanye nedizili, kanye

namanzi nomoya, kube ugesi. La mandla adluswa phezu kwenethiwekhi ka-Eskom engamakhilomitha angama-33,000, lapho ukunikezwa kanye nokufunwa kukagesi kulinganiswa ngesikhathi sangempela, ngejubane lohlelo lwamandla ku-50 hertz (Hz). Ugesi usatshalaliswa ngenethiwekhi ebanzi ehlanganisa izwe lonke, ihlinzeka ngaphezu kuka-86% wezidingo zaseNingizimu Afrika kanye ~20% kagesi owenziwe e-Afrika.



Ibhizinisi eliyinhloko

I-Eskom iwuhlelo oluhlanganiswe ngokuvundlile olwenza ugesi, futhi ludlulise futhi lusakaze ugesi ngokusebenzisa i-NTCSA (National Transmission Company of South Africa).

U-Eskom ukhiqiza u-95% kagesi osetshenziswa eNingizimu Afrika.

I-Eskom Enterprises, inkampani ephethwe ngokuphelele i-Eskom, kanye nezinkampani ezingaphansi kwayo, isebenza njengendlela lapho yonke imisebenzi ye-Eskom engalawulwa, ngaphakathi nangaphandle kweNingizimu Afrika, yenziwa khona. Imigqa yebhizinisi eliyinhloko le-Eskom Enterprises ingukuthuthukiswa kwengqalasizinda, imboni yamandla, izinsizakalo zamandla ezikhethekile kanye nokuphishekela amathuba ayisihluthulelo ezimbonini ezihlobene noma ezihlelekile, njengezobuchwepheshe bolwazi kanye nezokuxhumana ngocingo.

Amazwe lapho imisebenzi itholakala khona

U-Eskom usebenza eNingizimu Afrika nakwamanye amazwe asesifundeni se-SADC (Southern African Development Community), inhloko-dolobha yayo iseGoli, eNingizimu Afrika.

Ubunikazi

I-Eskom ingekaHulumeni waseNingizimu Afrika.

Uhlobo lwezimakethe namakhasimende akhonzwayo

Ugesi uthengiselwa amakhasimende ezimboni, ezimayini, ezentengiselwano, ezokulima, nezokuhlala, kanye nakubasabalalisi.

Ukwehlukani kwa kokuthengiswa emazweni/ezifundeni

Iningi lokuthengisa liseNingizimu Afrika, kunamaphesenti amancane kuphela aseningizimu ye-Afrika.

Imininingwane eyengeziwe mayelana nezindaba zezomnotho, ezemvelo nezomphakathi

U-Eskom uzibophezele ekuvumelaniseni ukubika kwakhe kokusimama nezikhungo zamazwe omhlaba. Ngaphezu kwalokho, imininingwane yezemvelo neyehlalo iyatholakala kuwebhusayithi ye-Eskom.

5. IZINDABA ZOKUXHUMANA OKUBALULEKILE ZOKUFUNDA NGOKUPHATHELENE NE-ESKOM HOLDINGS SOC LTD

5.1. Isikhulu Sokwaziswa

Igama: Mnr Dan Marokane
Inombolo yocingo: 011 800 8111
Imeyili: PAIA@eskom.co.za/cecorrespondence@eskom.co.za

5.2. Iphini lesiphathimandla solwazi

Igama: Mnr Jerome Mthembu
Inombolo yocingo: 011 800 8111
Imeyili: PAIA@eskom.co.za

5.3 Ukutholakala kolwazi othintana nabo jikelele:

Imeyili: PAIA@eskom.co.za

5.4 Ihhovisi likazwelonke/Elikhulu

Ikheli leposi: Posbus 1091
Johannesburg
2001

Ikheli lendawo: Eskom Megawatt Park
1 Maxwellrylaan
Sunninghill

Inombolo yocingo: 011 800 8111

Imeyili: PAIA@eskom.co.za

Iwebhusayithi: www.eskom.co.za

6. IZIXAZULULO EZITHOLAKALAYO MAYELANA NOMTHETHO NOMA UKWEHLULEKA UKUTHATHA ISINYATHELO KUKA-ESKOM HOLDINGS SOC LTD.

6.1 Inqubo yezikhalazo kuMlawuli Wezokwazisa noma kunoma iyiphi inhlangano elawulayo.

Uma umfakisicelo noma umuntu wesithathu engajabule ngesinqumo sesikhulu solwazi, angafaka isikhalazo ku-Information Regulator esebenzisa i-Form 5 (Regulation 10), etholakala kule linki engezansi:

[InfoRegSA-PAIA-Form05-Reg10-1.pdf](#)

Bheka iFomu 5 elingezansi ukuze uthole ukubhekisisa okulula:



InfoRegSA-PAIA-For
m05-Reg10-1.pdf

6.2 Inqubo yokuya enkantolo enegunya ukuze uthole usizo olufanele.

Umfakisisicelo noma umuntu wesithathu angafaka isicelo enkantolo sokuthola usizo olufanele ngokumelene nesinqumo sesikhulu solwazi se-Public Body ngemuva kokuthi inqubo yokukhalaza yomlawuli isisetshenziwe.

Ngokwesigaba 82 se-PAIA, lapho ilalela isicelo, inkantolo inganikeza noma imuphi umyalo olungile nofanele, kuhlenganise nomyalo:

- (i) ukuqinisekisa, ukuchibiyela noma ukuhlehlisa isinqumo esiyisihloko sesicelo esithintekayo;
- (ii) ukufuna ukuthi isikhulu solwazi noma isiphathimandla esifanelekile somphakathi noma inhloko yomzimba wangasese ithathe noma igweme ukuthatha isinyathelo inkantolo esibona sidingekile esikhathini esichazwe emyalweni;
- (iii) ukunikezwa kwesinqumo esiphuthumayo, sesikhashana noma esikhethekile, umyalelo ochazayo noma isinxephezelo; noma mayelana nezindleko.

7. INDLELA YOKUSEBENZISA I-PAIA NENDLELA YOKWENZA NCONO

7.1. 7.1. Umlawuli, ngokuhambisana nesigaba 10 (1) se-PAIA, uvuselele futhi wenza itholakale ngendlela eqondakala kalula futhi ngendlela efana naleyo engase ifunwe ngokufanele ngumuntu ofuna ukusebenzisa noma yiliphi ilungelo ku-PAIA naku-POPIA.

7.2. Le Ncwajana iyatholakala ngezilimi ezingu-4 (ezine) ezisemthethweni kulesi sixhumanisi [Wet op Bevordering van Toegang tot Inligting \(PAIA\) - Eskom](#).

7.3. Umhlahlandlela ongenhla uchaza

7.3.1. Isihloko se-PAIA ne-POPIA;

7.3.2. Ikheli leposi nomgwaqo, inombolo yocingo neyefeksi, uma ikhona, ikheli le-elektronikhi-

7.3.2.1. isikhulu solwazi sendawo ngayinye; futhi

- 7.3.2.2. isekela lesiphathimandla solwazi lomzimba ngamunye womphakathi nowangasese eliqokwe ngaphansi kwesigaba 17 (1) se-PAIA nesigaba 56 se-POPIA¹;
- 7.3.3. indlela nefomu lesicelo -
- 7.3.3.1. ukufinyelela irekhodi lomzimba womphakathi njengoba kuhlangozwe esigabeni 11²; Futhi
- 7.3.3.2. ukufinyelela irekhodi lomzimba wangasese njengoba kucatshangwa esigabeni 50³;
- 7.3.4. usizo olutholakalayo olusuka kumphathi wezokwazisa womphakathi ngokwemigomo ye-PAIA ne-POPIA;
- 7.3.5. usizo olutholakalayo oluvela kuMlawuli mayelana ne-PAIA ne-POPIA;
- 7.3.6. zonke izindlela zokulandisa ezitholakalayo mayelana nesenzo noma ukwehluleka ukuthatha isinyathelo mayelana nelungelo noma isibopho esinikezwe noma esibekwe yi-PAIA ne-POPIA, kufaka phakathi indlela yokuhlala-
- 7.3.6.1. isikhalazo kuMlawuli; futhi
- 7.3.6.2. isicelo enkantolo ngokumelene nesinqumo sesikhulu solwazi somphakathi, isinqumo sokudlulisa isikhalo sangaphakathi noma isinqumo soMlawuli noma isinqumo senhloko yomphakathi;

¹ Isigaba 56 (a) se-POPIA - Umzimba ngamunye womphakathi nowomkhakha wangasese kufanele uhlinzekele, njengoba kubekiwe esigabeni 17 soMthetho Wokukhuthazwa Kokutholakala Kolwazi, ngokuchibiyelwa okudingekayo, ukuqokwa kwenani labantu, uma likhona, njengabasekeli bezikhulu zolwazi njengoba kudingeka ukwenza imisebenzi nemithwalo yemfanelo ebekwe esigabeni 55 (a) se-POPIA.

² Isigaba 11 (1) se-PAIA - Umfakisicelo kufanele anikezwe ukufinyelela kwirekhodi lomphakathi uma lowo ofaka isicelo ehambisana nazo zonke izidingo zenqubo e-PAIA maqondana nesicelo sokufinyelela kulelo rekhodi; futhi ukufinyelela kulelo rekhodi akwenqatshwa nganoma yisiphi izizathu sokwenqatshwa njengoba kuhlosiwe eSahlukweni 4 salesi sigaba..

³ Isigaba 50 (1) se-PAIA - Umfakisicelo kufanele athole ukufinyelela kunoma iyiphi irekhodi lomzimba wangasese uma -

- lelo rekhodi liyadingeka ukuze kusetshenziswe noma kuvikelwe noma yimaphi amalungelo;
- lowo muntu uhambisana nezidingo zenqubo eziku-PAIA mayelana nesicelo sokufinyelela kulelo rekhodi; futhi
- ukufinyelela kulelo rekhodi akwenqatshelwa ngokwanoma yiziphi izizathu zokwenqatshwa njengoba kucatshangwa eSahlukweni 4 salesi sigaba..

- 7.3.7. nemibandela yezigaba 14 no-51 ngokulandelana kwayo edinga ukuthi umzimba womphakathi kanye nomzimba wangasese ubhale incwadi yezincwadi, kanye nendlela yokuthola incwadi yezincwadi;
- 7.3.8. nemibandela yezigaba 15 no-52 enikeza ukudalulwa ngokuzithandela kwezigaba zemibhalo ngumphakathi nomzimba wangasese ngokulandelana;
- 7.3.9. izaziso ezikhishwe ngaphansi kwezigaba 22 no-54 eziphathelene nezimali okumele zikhokhwe mayelana nezicelo zokufinyelela; futhi
- 7.3.10. iziqondiso ezenziwe ngaphansi kwesigaba 92⁴.
- 7.4. Amalungu omphakathi angahlola noma athathe amakhophi e-Directory emahhovisi ka-Eskom, kuhlanganise nehhovisi loMlawuli, ngezikhathi ezijwayelekile zomsebenzi.
- 7.5. Le Ncwadi Yesiqondisi ingatholakala -

- 7.5.1. uma siceliwe, siphathwe yi-Information Officer, iFomu 1 litholakala ku <https://inforegulator.org.za/paia-forms/>;

Isigaba 14 ((1) se-PAIA- Isikhulu sezokwaziswa somphakathi kumele, okungenani ngezilimi ezintathu ezisemthethweni, senze kutholakale incwadi equkethe ulwazi oluhlelwe esigabeni 4 ngenhla.

Isigaba 51 ((1) se-PAIA- Inhloko yenhlangano yangasese kufanele yenze itholakale incwadi enenzacelo yolwazi oluhlelwe esigabeni 4 ngenhla.

Isigaba 15 ((1) se-PAIA - Isikhulu solwazi somphakathi, kufanele senze kutholakale ngendlela ebekiwe incaciso yezigaba zemibhalo yomphakathi ezitholakala ngokuzenzakalelayo ngaphandle kokuba umuntu acele ukufinyelela

Isigaba 52 ((1) se-PAIA- Inhloko yenhlangano yangasese, ngokuzithandela, ingenza kutholakale ngendlela ebekiwe incaciso yezigaba zemibhalo yenhlangano yangasese ezitholakala ngokuzenzakalela ngaphandle kokuba umuntu acele ukufinyelela

Isigaba 22 ((1) se-PAIA- Isikhulu solwazi somphakathi esenziwe isicelo sokufinyelela, kufanele ngesaziso sifune ukuthi ofake isicelo akhokhe imali yesicelo ebekiwe (uma ikhona), ngaphambi kokuqhubeka nokucubungula isicelo.

Isigaba 54 ((1) se-PAIA- Umphathi wenhlangano yangasese okwenziwa kuyo isicelo sokufinyelela kumele ngesaziso acele lowo ocelayo ukuba akhokhe imali yesicelo ebekiwe (uma ikhona), ngaphambi kokuqhubeka nokucubungula isicelo.

Isigaba 92 (1) se-PAIA sihlinzeka ngokuthi uNgqongqoshe, ngesimemezelo kuGazethi, angenza imithetho mayelana-

(a) nanoma yiluphi udaba oludingekayo noma oluvunyelwe yilomthetho ukuba lubekwe;

(b) nanoma yiluphi udaba olumayelana nezimali ezicatshangwa ezigabeni 22 no 54;

(c) nanoma yisiphi isaziso esidingwa yilo Mthetho;

(d) imigomo efanayo okufanele isetshenziswe yisikhulu solwazi somphakathi lapho sinquma ukuthi yiziphi izigaba zamarekhodi okufanele zenziwe zitholakale ngokusho kwesigaba 15; futhi

(e) noma yiziphi izindaba zokuphatha noma zenqubo ezidingekayo ukuze kusetshenziswe izimiso zalesi Sivumelwano „

7.5.2. uma ucela, kuMlawuli woLwazi, ngokuthumela iFomu 1 (isicelo sekhophi yeNcwajana) ku - PAIACompliance@infoRegulator.org.za; ne

7.5.3. kusukela website Regulator (<https://infoRegulator.org.za/paia-guidelines/>).

8. INCAZELO YEZIHLOKO INDIKIMBA EGCINE NGAZO AMAREKHODI KANYE NEZINHLOBO ZAMAREKHODI APHETHWE YI-ESKOM HOLDINGS SOC LTDI

Izihloko zendikimba zokugcina amarekhodi	Izigaba zama-rekhodi mayelana nesihloko ngasinye
Amadokhumenti amasu, izinhlelo, iziphakamiso	Uhlelo Lonyaka, Uhlelo Lwamasu, Uhlelo Lonyaka Lokusebenza.
Umnyango Wezabasebenzi (HR)	<ul style="list-style-type: none"> - Izingqobomgomo nezingqobo ze-HR; - Izikhundla ezikhangisiwe; - Amarekhodi abasebenzi; - Ukufunda nokuthuthuka, isibonelo: izinhlelo zokuthuthukisa amakhono nokuqeqesha - Uhlelo Lokulingana Emsebenzini Nezibalo
Ezezimali	- Isimo sezimali sonyaka
Ukuthengwa kwempahla Nokuphathwa KokuthengwaKkwempahla (P&SCM)	<ul style="list-style-type: none"> - Izincwadi Zethenda - Izingqobomgomo nezingqobo ze-P&SCM

9. ISAZISO ESIPHATHELENE NEMIKHAKHA YAMAREKHODI KA-ESKOM HOLDINGS SOC LTD EZITHOLAYO NGAPHANDLE KOKUCELA USIZO LOKUFINYELELA KOTHILE.



NOTICE IN TERMS OF SECTION 15 OF F

Umthetho Wokukhuthaza Ukutholakala Kolwazi (PAIA) - Eskom

Isikhulu soLwazi sihlanganise isaziso esingenhla mayelana nezigaba zamarekhodi e-Eskom atholakala ngaphandle kokuba umuntu acele ukufinyelela ngokugcwalisa iFomu 2. Isaziso esishiwo ngenhla singatholakala ngokuchofeza kusixhumanisi esingenhla esiya kuwebhusayithi ye-Eskom. Isaziso siyatholakala kuwebhusayithi ye-Information Regulator futhi singahlolwa uma siceliwe ehhovisi eliyinhloko lakwa-Eskom ngesikhathi samahora ajwayelekile okusebenza.

10. IZINSIZA EZITHOLAKALA EMPHAKATHINI EZIVELA KU-ESKOM HOLDINGS SOC LTD NENDLELA YOKUTHOLA UKUFINYELELA KULEZI ZINSIZA

U-Eskom udala inani ngokusebenzisa ukukhiqiza, ukudlulisa, ukusabalalisa, ukuthenga nokuthengisa ugesi. Imodeli yayo yokudala inani ngezansi ibonisa ukuthi iguqula kanjani okokufaka kube ugesi onikezwe amakhasimende. Amandla kagesi akhiqizwa ngokuguqula izinto ezisetshenziswayo ezivela emvelweni, njengamalale, uphethiloli, i-diesel, kanye namanzi nomoya, kube amandla kagesi. Lolu ketshezi ludluliselwa kunethiwekhi ka-Eskom engamakhilomitha angu-33 000 lapho ukunikezwa nokufunwa kukagesi kulinganiswa khona ngesikhathi sangempela, kugcinwe imvamisa yohlelo lwamandla ngo-50 hertz (Hz). Ugesi usatshalaliswa ngenethiwekhi yokusabalalisa ebanzi ehlanganisa lonke izwe ukuhlinzeka ngaphezu kwe-86% yezidingo zaseNingizimu Afrika kanye ne-20% kagesi okhiqizwa e-Afrika.

11. UKUBANDAKANYEKA KWABABAMBIQHAZA EKWAKHIWENI KWENQUBOMGOMO NOMA EKUSEBENZISENI AMANDLA NOMA EKUSEBENZISENI IMISEBENZI YE-ESKOM HOLDINGS SOC LTD

I-Eskom ibheka abathintekayo njengababalulekile ebhizinisini layo futhi iyawazisa amagalelo nemibono yabo. U-Eskom usebenzelana nabathintekayo bakhe ngokubamba iqhaza ezinkundleni kanye nasemakomitini nabasebenzi abahlelekile futhi usebenzelana namakhasimende akhe kanye nabatshalizimali. Uhulumeni uqondisa inqubomgomo ngaphakathi kwe-Eskom, ikakhulukazi uMnyango wabaninimasheya we-Eskom kanye ne-National Energy Regulator yaseNingizimu Afrika (i-NERSA). Ulwazi oluqoqwe kuwo wonke amaqembu lusetshenziselwa ukunquma inqubomgomo ngaphakathi kwe-Eskom.

Izakhiwo zokubamba iqhaza nezisebenzi ezihleliwe

U-Eskom usungule izakhiwo ezifanele zokubamba iqhaza nabasebenzi abahlelekile ukuqinisekisa ukuthi abasebenzi bangathonya izinqumo ezibathinta ngendlela enenjongo. Inqubo yokuthonya izinqumo ifaka phakathi, kodwa ayikhawulelwe, izindlela zokubonisana nokwabelana ngolwazi. Izinqumo zithonywa ngamaforamu ahlukahlukene anezisebenzi ezihleliwe, njengeForamu Yeqembu Likazwelonke Lezingxenywe, iForamu Yokubonisana Ephakathi (CCF), iForamu Yokuxoxisana Ephakathi (CBF) neForamu Yamasu (SF). La makomiti nezinkundla zichazwe ngezansi:

Iforamu Yeqembu Likazwelonke Lezingxenywe

Iforamu Yeqembu Lewadi Likazwelonke iphatha izindaba ezinomthelela eqenjini lonke.

IForamu Yokubonisana Ephakathi (CCF)

I-CCF iyiforamu yokubonisana kwamazwe nokwabelana ngolwazi. Zonke izindaba ezinomthelela ku-Eskom zidingidwa kule nkundla. Zonke izimiso ezisebenza kwiForamu Yeqembu Likazwelonke Lokwahlukana nazo ziyasebenza lapha.

Isikhungo Esiyinhloko Sokuxoxisana

Lena yindawo lapho kuxoxiswa khona ngamaholo nezimo zomsebenzi njalo ngonyaka. Izinkinga ezisingathwa kule nkundla zinomthelela ku-Eskom yonke futhi kungenzeka zingaphathwa kunoma iyiphi enye inkundla. Uma i-CCF iphakamisa izinkinga, zidinga ukudluliselwa kulesi sithangami.

IForamu Yamasu

Lesi yisithangami lapho kuxoxwa khona ngezindaba eziphakeme zamasu nezindaba ezisemqoka. Kodwa-ke, ihlala iyinkundla yokwabelana ngolwazi futhi ayikwazi ukusetshenziswa njengenhlangano yokudlulisa amacala kwezinye izakhiwo. Ukuhambela kule nkundla kukhawulelwe kumalungu aphezulu okuphatha e-Eskom kanye nasezinhlanganweni zabasebenzi.

Ukuxhumana Namakhasimende

U-Eskom uyawazisa amakhasimende akhe futhi uxhumana nawo njalo. Impendulo itholakala njalo kumakhasimende ethu, futhi iziphakamiso zinikeza ukwaziswa okubalulekile ebhizinisini lethu.

Ukuxhumana Nabatshalizimali

U-Eskom uxhumana njalo nabatshalizimali bakhe, eqinisekisa ukuthi bayaziswa ngezinguquko ezenzeka ngaphakathi kwa-Eskom nokuthi kwenziwa imibukiso ejwayelekile ezweni lonke.

I-NERSA

Ngokuhlelwa kabusha komkhakha wokuhlinzekwa kukagesi, i-NERSA izobheka ezinye izinketho ezikhona ezikhungweni kanye nezimakethe zikagesi ukuvumela ukuncintisana nokukhetha kwamakhasimende futhi ngaleyo ndlela kuqede ubukhosi buka-Eskom ekukhiqizeni ugesi. I-NERSA ikholelwa ukuthi kubalulekile ukuthi izwe lethu libe nombono wemboni yokuhlinzekwa kukagesi ukuze sonke sazi ukuthi siya ngaphi. Ushintsho embonini kumelwe luhlelwe, luhlelwe ngezigaba, futhi luqhubeke. Ukuze kuqinisekise impumelelo yalo mkhakha, i-NERSA ikhuthaza intuthuko elandelayo:

- Ukusungulwa nokusebenza komkhakha wokunikezela ngogesi osebenza kahle futhi osebenza kahle
- Ukuqeda ubushiqela emkhakheni wokukhiqiza nokusabalalisa
- Ukwenza ngcono amanani entengo nokusetshenziswa kokucina
- Ukunikeza amakhasimende ilungelo lokukhetha umhlinzeki wawo kagesi
- Ukwakha imakethe kagesi
- Ukungenisa ukuncintisana embonini, ikakhulukazi emkhakheni wokukhiqiza
- Ukubhekana nomthelela wokukhiqiza nokusabalalisa emvelweni kanye nokudluliswa nge-NTCSA (National Transmission Company of South Africa).
- Ukuvumela ukufinyelela okuvulekile, okungenabandlululo ohlelweni lokudlulisa nge-NTCSA
- Ukwenza kube nezimo ezilinganayo phakathi kwabasabalalisi bakagesi
- Ukukhuthaza ukubamba iqhaza komkhakha wangasese embonini

12. Ukucubungula Imininingwane Yomuntu

12.1 Inhlalo Yokucubungula

I-Eskom iqoqa, isebenzise futhi igcine imininingwane yomuntu ukuze icubungule leyo mininingwane ngezinga elidingekayo ukuze iqhube imisebenzi yayo yebhizinisi.

I-Eskom izofuna imvume yomuntu onolwazi ukuze icubungule ulwazi lomuntu siqu, kubandakanye ukucubungula okwengeziwe ngaphandle uma kunesivumelwano nomuntu onolwazi, noma lapho kudingwa khona umthetho noma lapho kwenziwa umsebenzi noma umsebenzi womphakathi noma lapho i-Eskom ikhululwa ngumlawuli.

12.2 Incazelo yezigaba zabaDathasubjekthi nolwazi noma izigaba zolwazi ezihlobene nazo

- nanoma iyiphi inombolo, uphawu, ikheli le-e-mail, ikheli lendawo, inombolo yocingo, imininingwane yendawo, imininingwane ekuyi-Internet, noma okunye ukwaziswa okuphathelene nomuntu.
- imininingwane yomuntu.
- imibono yomuntu siqu noma izinto azithandayo.
- izincwadi ezithunyelwa yilowo muntu eziyimfihlo noma eziyimfihlo noma ezinye izincwadi ezingase zidalule okuqukethwe yilezo zincwadi zokuqala.
- imibono yomunye umuntu ngaye; futhi
- igama lomuntu uma livela kanye neminye imininingwane ephathelene naye noma uma ukudalulwa kwegama ngokwalo kungembula ukwaziswa okuthile ngomuntu.

Imininingwane ekhethekile: kusho izinkolelo zenkolo noma zefilosofi, ubuhlanga noma imvelaphi yobuhlanga, ubulungu bezinyunyana zabasebenzi, inkolelo yezombusazwe, impilo noma impilo yezocansi, noma imininingwane ye-biometric yomuntu onemininingwane, noma ukuziphatha kobugebengu komuntu onemininingwane uma imininingwane enjalo ihlobene (i) nokwenziwa kwecala okusolwa ukuthi kwenziwe ngumuntu onemininingwane, noma (ii) noma yiziphi izinqubo eziphathelene nanoma yiliphi icala okusolwa ukuthi lenziwe ngumuntu onemininingwane noma ukunqunywa kwalezo zinqubo.

Izigaba zabantu okubhekwana nabo nolwazi lwabo

I-Eskom ingacubungula ulwazi lwezigaba zabantu ezifana nabasebenzi, amakhasimende, abahlinzeki, noma omunye umuntu wesithathu (“lapha okubhekiselwa kuye ngokuthi abantu okubhekwana nabo”) abasebenzisana ne-Eskom. Uhlobo lolwazi olungacutshungulwa lunikezwe ngezansi. I-Eskom ingaqoqa, isebenzise, futhi igcine kuphela ulwazi olwenele futhi olufanele ukuqhuba ibhizinisi layo.

<u>Datasubjek</u>	<u>Tipis inligting wat versamelis</u>	<u>Doel van verwerking</u>
<p>Amakhasimende</p> <p>Okukhokhelwa</p> <p>kusengaphambili</p> <p>Abasebenzisi</p> <p>bamandla abancane</p> <p>Abasebenzisi</p> <p>abakhulu bamandla</p>	<p>Igama, isibongo, inombolo kamazisi, inombolo yocingo, ikheli le-imeyili, inombolo yokubhalisa yenkampani, ikheli lendawo neposi, imininingwane yokulinganisa, imininingwane yasebhange,</p>	<p>Ukuphetha isivumelwano sokuphakelwa kukagesi.</p> <p>Ukuhlinzeka ngezinsizakalo zokulungisa kumakhasimende.</p> <p>Ukuxhuma amakhasimende kunethiwekhi.</p>
<p><u>Abahlinzeki/Abanikezeli</u></p>	<p>Imibhalo esemthethweni –</p> <p>Ukukhishwa kwentela, izitifiketi ze-BBEE, izitifiketi ze-COIDA, inombolo yokubhalisa yenkampani, igama, ubuhlanga, ubulili, imvelaphi yobuhlanga, inombolo kamazisi, inombolo yocingo, ikheli le-imeyili, ikheli lendawo, ubulungu noma abaninimasheya benkampani Izitatimende zezimali nemininingwane yasebhange.</p>	<p>Isicelo solwazi olwengeziwe – ukuhlanganisa i-database yabaphakeli (ukunquma ububanzi bomsebenzi nokuthi ngabe abaphakeli bakhona yini emakethe ukuhlinzeka ngalezozimpahla nezinsizakalo).</p> <p>Amathenda – ukuqoqa ulwazi ngezinhloso zokuhlola, ukunquma nokunika ithenda kumphakeli nokuqinisekisa umphakeli onganikeza izevisi ku-Eskom.</p> <p>Abafakizicelo abahluliwe – ukuqoqa ulwazi ngenhloso yokuhlola nokwahlulela i-tender nokugcina ulwazi ngenhloso yokucwaningwa kwamabhuku futhi uma umfakizicelo ohlukunyeziwe efaka isikhalazo noma ethula isinyathelo somthetho.</p>
<p><u>Abasebenzi</u></p>	<p>Igama, isibongo, inombolo kamazisi, imininingwane</p>	<p>Ukuphatha nokulawula ubudlelwano nabasebenzi.</p>

	yasebhange, imininingwane yezokwelapha, imininingwane yabantu abaxhomeke kubo, imininingwane yezimo eziphuthumayo, ikheli lendawo yokuhlala neliposi, inombolo yenkomba yentela, iziqu, ubulili, ubuhlanga, ubuzwe, amaholo nemininingwane yabahlomuli.	
<u>Abaqokelwe umsebenzi</u>	Igama, isibongo, inombolo ye-ID, ikheli le-imeyili, izinombolo zocingo, ikheli, iziqu, inani labantu abaxhomekile, amapay-slips kanye/noma ukuhlolwa kwengqondo, ukuqinisekiswa, kanye nokuhlolwa kwamagama.	Ukuhlola nokuhlola abaqokiwe ngezinhloso zokuqashwa.

Bheka Isitatimende Sokuvikelwa Kobumfihlo Sangaphandle se-Eskom ku-www.eskom.co.za noma Isitatimende Sokuvikelwa Kobumfihlo Sangaphakathi ku-Eskom Intranet

Indlela esiqoqa ngayo ulwazi lomuntu siqu

Singase siqoqe ulwazi lomuntu siqu ngokuqondile kumuntu onolwazi, nge-imeyili, ngewebhusayithi yethu, noma kubantu besithathu.

Ukwabelana ngolwazi lomuntu siqu

Singabelana ngemininingwane yakho yangasese uma kunesidingo nabaqhubi beqembu lesithathu ukufeza izidingo zethu zebhizinisi ngokuya ngokwenziwa kwesivumelwano somqhubi.

Ukudalulwa okuphoqelekile kolwazi lwakho lomuntu siqu kungenziwa kubantu besithathu njengoba kudingwa umthetho.

Ukucutshungulwa kolwazi olukhethekile lomuntu siqu

I-Eskom ingakwazi ukucubungula ulwazi lomuntu siqu oluhlobene nohlanga noma ubuzwe, ubulungu bezinyunyana zabasebenzi, ulwazi lwezempilo noma lwe-biometric, noma ukuziphatha kobugebengu komuntu onolwazi ngaphandle kokuthi:

- okuvunyelwene ngakho yilona muntu okuqondene naye
- okufunwa umthetho
- ngezinjongo zomlando noma zocwaningo; noma
- ulwazi lusendaweni yomphakathi.

Ukugcinwa kolwazi lomuntu siqu

U-Eskom angagcina amarekhodi olwazi lomuntu siqu inqobo nje uma kudingekile ngokuhambisana nemithetho esebenzayo noma ngezinhloso zokusebenza njengoba kushiwo ku-Eskom's Retention Standard.

U-Eskom angagcina ulwazi olungaphezu kwalokho okubekwe ngumthetho ngezinhloso zomlando noma zezibalo.

Izinga nokuphepha kolwazi

I-Eskom ithatha izinyathelo zobuchwepheshe ezifanele futhi ezifanele ukuvikela ubumfihlo, ubuqotho kanye nekhwalithi yolwazi lomuntu odluliswayo ngokuhambisana nenqubomgomo yayo yezokuphepha kolwazi ukugwema ukufinyelela okungagunyaziwe, ukulahleka, kanye nokucekelwa phansi kolwazi olunjalo.

12. Amalungelo omuntu onolwazi

• Ukufinyelela kulwazi lomuntu siqu olugcinwe yi-Eskom

Isihloko sedatha sinelungelo lokuqinisekisa, mahhala, ukuthi ngabe i-Eskom igcina imininingwane yakhe. Wena njengomuntu onolwazi unelungelo lokunquma uhlobo lolwazi olugcinwe yi-Eskom noma umuntu wesithathu ngemali ebekiwe ngokusebenzisa iHhovisi le-POPIA, elingathintwa ku-POPIA@eskom.co.za.

• Ukulungiswa nokuvuselelwa kolwazi lomuntu siqu.

U-Eskom uzothatha izinyathelo ezifanele ukuqinisekisa ukuthi ulwazi lomuntu siqu lwedatha luyiqiniso futhi lusesikhathini. Kodwa-ke, umuntu onolwazi unelungelo, mahhala, lokulungisa, ukuvuselela, noma ukususa imininingwane yakhe yomuntu siqu, okungenzeka ayinembile, idukisa, iphelelwe yisikhathi, noma itholakale ngokungemthetho ngendlela ebekiwe. Izixhumanisi zamafomu zingatholakala ku-www.eskom.co.za noma ku-e-services: Information Regulator (infoeregulator.org.za)

1. Ukuphikisa ukucutshungulwa kolwazi lomuntu siqu

Imininingwane yomuntu uqobo ingase isetshenziselwe ukuvikela noma ukuvikela imininingwane yomuntu uqobo, noma ukuvikela noma ukuvikela imininingwane yomuntu uqobo.

Ngaphezu kwalokho, umuntu onolwazi angaphikisa ukumaketha okuqondile.

2. Ukuhoxiswa kwemvume

Umuntu onolwazi unelungelo lokuhoxisa imvume yakhe nganoma yisiphi isikhathi ngokuhambisana nesigaba 11(2)(b) inqobo nje uma kungathinti ukwenziwa noma ukwenziwa kwenkontileka, intshisekelo esemthethweni ye-Eskom, umuntu onolwazi, noma ukuhambisana nezidingo zomthetho.

3. Ukudluliselwa kolwazi lomuntu siqu

I-Eskom ayinakudlulisa, yabelane, noma igcine imininingwane yomuntu ngaphandle kweRiphabhulikhi yaseNingizimu Afrika ngaphandle uma kudingeka ngezidingo zebhizinisi layo futhi kuncike kwizidingo ze-POPIA.

4. Izikhalazo

Njengomuntu onolwazi, ungafaka isikhalazo ngokuhambisana neSigaba 74 se-POPIA kumlawuli maqondana nokungenelela okusolwayo ekuvikelweni kwemininingwane yakho yomuntu siqu kwifomu elibekiwe elingezansi.

Noma, ungathumela isikhalazo sakho kuqala ehhovisi le-POPIA bese usithumela ku-POPIA@eskom.co.za.

Kategorieë van dataonderwerpe	Persoonlike inligting wat moontlik verwerk kan word
Abantu abanjengezilwane	Amagama nesibongo; imininingwane yokuxhumana (izinombolo zokuxhumana), inombolo yefeksi, ikheli le-imeyili; ikheli lendawo yokuhlala, leposi noma lebhizinisi; Inombolo Ehlukile Yokuhlonza/Yobunikazi kanye nencwadi eyimfihlo
Abantu abanolwazi lwezomthetho	Amagama abantu abazoxhumana nabo; Igama lenhlangano esemthethweni; ikheli lendawo neposi; imininingwane yokuxhumana (izinombolo zokuxhumana, inombolo yefeksi, ikheli le-imeyili); inombolo yokubhalisa; ulwazi lwezezimali, lwezohwebo, lwesayensi noma lwezobuchwepheshe kanye nemfihlo yebhizinisi
Izisebenzi	Ubulili, ukukhulelwa; isimo somshado; Uhlanga, ubudala, ulimi, ulwazi ngemfundo (iziqu); ulwazi lwezezimali; umlando wokuqashwa; inombolo kamazisi; ikheli lomzimba neliposi; imininingwane yokuxhumana (izinombolo zokuxhumana), inombolo yefeksi, ikheli le-imeyili); ukuziphatha kobugebengu; inhlalakahle kanye nezihlobo zabo (amalungu omndeni) uhlanga, ukwelashwa, ubulili, ubulili, ubuzwe, ubuhlanga noma imvelaphi yomphakathi, ukuthambekela ngokobulili, ubudala, impilo yomzimba noma yengqondo, inhlalakahle, ukukhubazeka, inkolo, unembeza, inkolelo, isiko, ulimi, imininingwane ye-biometric yomuntu

11.1 Die ontvangers of kategorieë ontvangers aan wie die persoonlike inligting verskaf mag word

Isigaba seminingwane yomuntu siqu	Abamukelayo noma Izigaba Zabamukelayo
Inombolo kamazisi kanye namagama, ukuze kuhlolwe ubugebengu	Izinhlango Zokuqinisa Umthetho (SAPS, SIU, Hawks, SSA)
Iziqu, zokuqinisekisa iziqu	I-South African Qualifications Authority (i-SAQA) - Iziphathimandla zeziqu zaseNingizimu Afrika
	Abaqoqo Bentela eNingizimu Afrika (SARS)
	Usizo Lwezokwelapha
	Izinyonyana Zokuhwebelana (NUMSA, Solidarity)
	Izikhungo Zokubhanga
	Izinkampani Zemishwalense
Umlando wesikweletu nezinkokhelo, ukuze uthole ulwazi ngesikweletu	Izikhungo Zezikweletu
	Verifikasie-agentskappe (bv. MIE)

12.4 Ukugeleza kolwazi lomuntu siqu oluhlelwe ngaphesheya kwemingcele

I-Eskom ihlele ukugeleza kwemininingwane yomuntu ngaphesheya kwemingcele, ikakhulukazi kumongo wezinsizakalo ezisekelwe efwini. Le migudu ilawulwa yizinqubomgomo zangaphakathi ze-Eskom kanye neziqinisekiso zesivumelwano ezihambisana noMthetho Wokuvikelwa Kwemininingwane Yabantu 4 ka-2013 (POPIA)

12.5 Incazelo Jikelele Yezinyathelo Zokuphepha Kolwazi okumele ziqaliswe yiqembu elibhekele ukuqinisekisa ubumfihlo, ubuqotho nokutholakala kolwazi

Imininingwane ephumayo neyidluliswayo ibethelwa ukuze kuvikelwe imininingwane ebucayi ekuvezweni.

Imininingwane ebucayi efana nemininingwane yomuntu uqobo (PII) idatha ezindaweni ezingezona ezokukhiqiza iyafihlwa. Ukuqinisekiswa kwezinto eziningi (MFA)

kusetshenziswa njengengxenye yesibili yokuqinisekisa ukuvimbela ukufinyelela okungagunyaziwe. Kusetshenziswa ithuluzi le-Privileged Access Management (PAM), eligcina ngokuphepha, liphathe futhi liguqule iziqinisekiso zama-akhawunti anelungelo. Uhlelo lokulawula ukufinyelela (i-RBAC) lusetshenziselwa ukuqinisekisa ukuthi ukufinyelela okuncane kunikezwa. Kusetshenziswe isixazululo se-End Point Security esiphambili esinikeza amakhono aphelele okuthola izinsongo nokuphendula ezingxenyeni ezahlukahlukene zokuphepha. Isixazululo se-AI-powered Network Detection and Response (NDR) sisetshenziselwa ukuthola ithrafikhi enobungozi nokungahambi kahle.

Isixazululo sokuqapha esisebenza nge-AI sokuqapha okujulile. Ithuluzi lokuvimbela ukulahleka kwedatha (DLP) lisetshenziselwa iMicrosoft (MS) 365 Workloads. Ama-backups nsukuzonke ayanda kufanele enziwe, abhalwe ngekodi, futhi agcinwe ngokuphepha ngaphandle kwendawo. Kufanele kusetshenziswe ukuvumelanisa kwedatha yesikhathi sangempela noma ukuphindaphindeka kwedatha endaweni yesibili noma yokuvuselela inhlekelele (i-DR), etholakala ezifundeni ezahlukahlukene. Uhlelo lokubuyiselwa emuva kwenhlekelele (i-DRP) luyachazwa, luhlolwe minyaka yonke ukuqinisekisa ukuthi ama-DRP ayasebenza futhi afanelekile ukulungiselela inhlekelele, futhi anendlela engcono kakhulu yokubhekana nayo. I-Back up Restore Plan and Procedure ichazwa, ihlolwe minyaka yonke futhi iqinisekise ukuthi idatha ingabuyiselwa futhi ibuyiselwe. Inqubo yokuvikelwa kokwenqatshelwa kwensizakalo (i-DDoS) isetshenziselwa zonke izinsizakalo zefu. I-Web Application Firewall (WAF) isetshenziselwa zonke izinhlelo zokusebenza ezibhekene ne-intanethi nezinhlelo zokusebenza ezisekelwe kuwebhu. Izindonga zomlilo ezizungezile zisetshenziselwa ukuvumela ukuhamba okuphephile phakathi kwenethiwekhi yenkampani yakwa-Eskom ne-Internet. Ukuhlolwa Kokungena Kwenziwa Njalo. Kwenziwa njalo ukuhlolwa kobungozi nokuchayeka. Ukucwaningwa kwamabhuku kwangaphandle/kwangaphakathi kwenziwa njalo.

13. BESKIKBAARHEID VAN DIE HANDLEIDING

13.1 Le Ncwadi itholakala ngezilimi ezine ezisemthethweni ezilandelayo -

13.1.1 IsiNgisi;

13.1.2 isiZulu

13.1.3 iSesotho;

13.1.4 IsiBhunu.

Ikhophi yaleli Bhukwana noma inguqulo yalo evuselelwe, iyatholakala ngokulandelayo:

13.2.1 ku-www.eskom.co.za, yenhlangano yomphakathi;

13.2.2 ehhovisi eliyinhloko lenhlangano yomphakathi ukuze kuhlolwe umphakathi ngesikhathi samahora ajwayelekile okusebenza;

13.2.3 kunoma yimuphi umuntu ngokucela nangokukhokha imali ebekiwe efanele; futhi

13.2.4 kuMlawuli Wokwaziswa uma eceliwe.

13.3 Imali ekhokhelwa ikhophi leManuwali, njengoba kucatshangwa kuSithasiselo B seMithethonqubo, iyakhokhwa nge-photocopy ngayinye eyenziwe yohlobo lwe-A4.

14. UKUVUSELELWA KWENCWAJANA

I-Eskom Holdings SOC Ltd, uma kunesidingo, izobuyekeza futhi ishicilele le-Manual minyaka yonke.