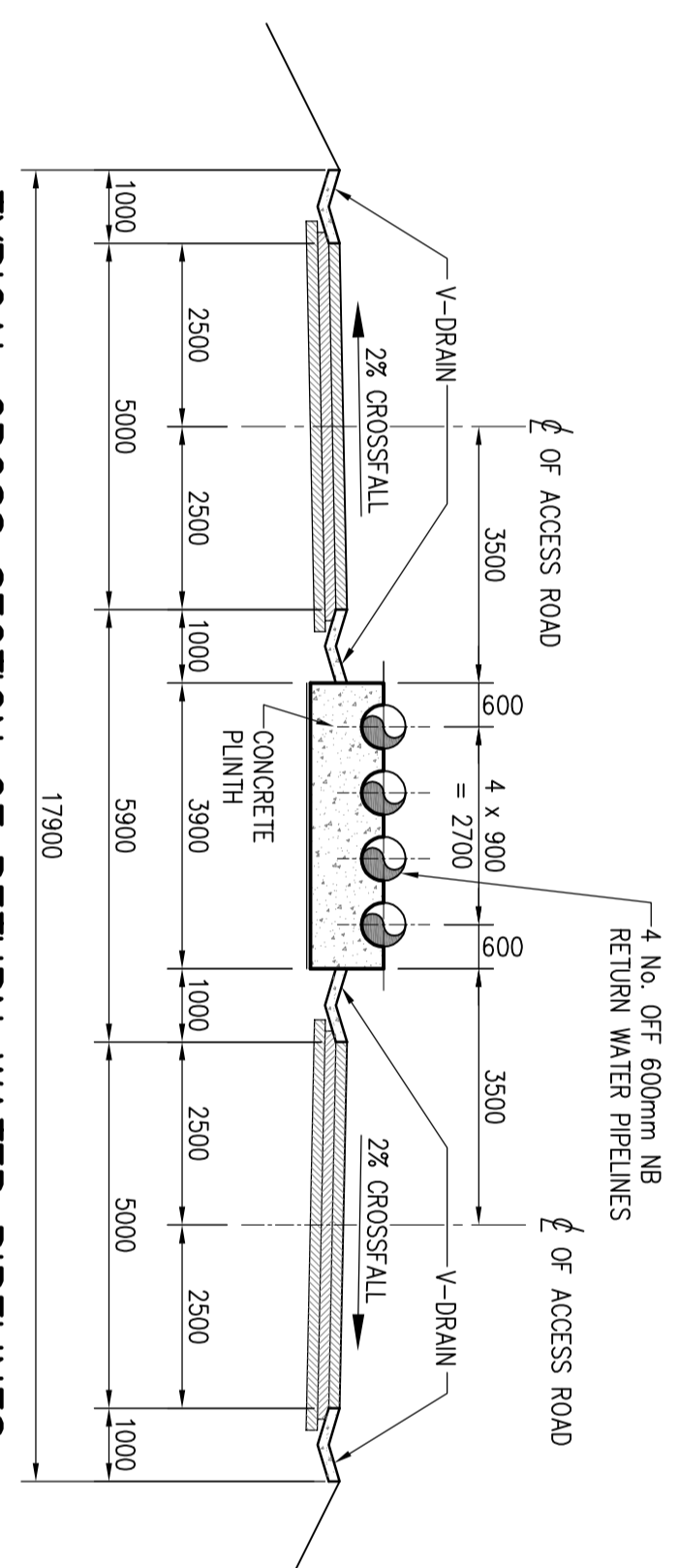


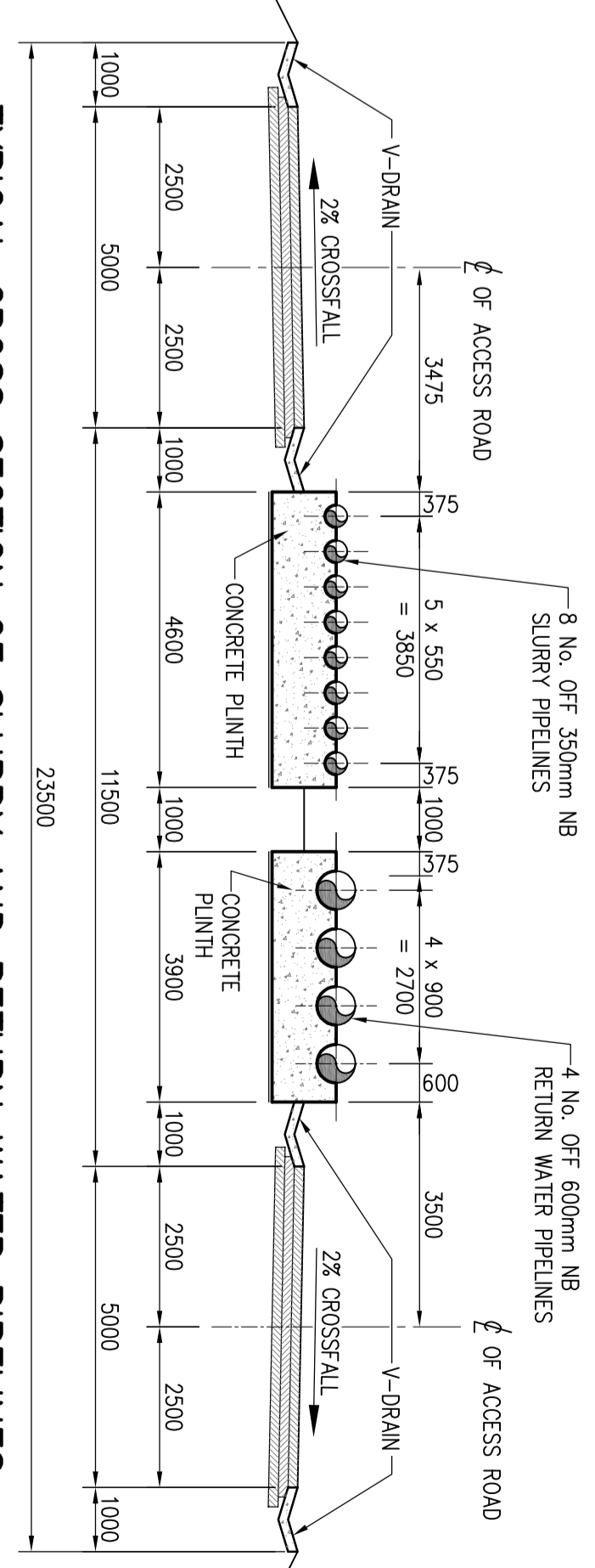
TYPICAL CROSS SECTION OF SLURRY PIPELINES

SECTION A  
1:100



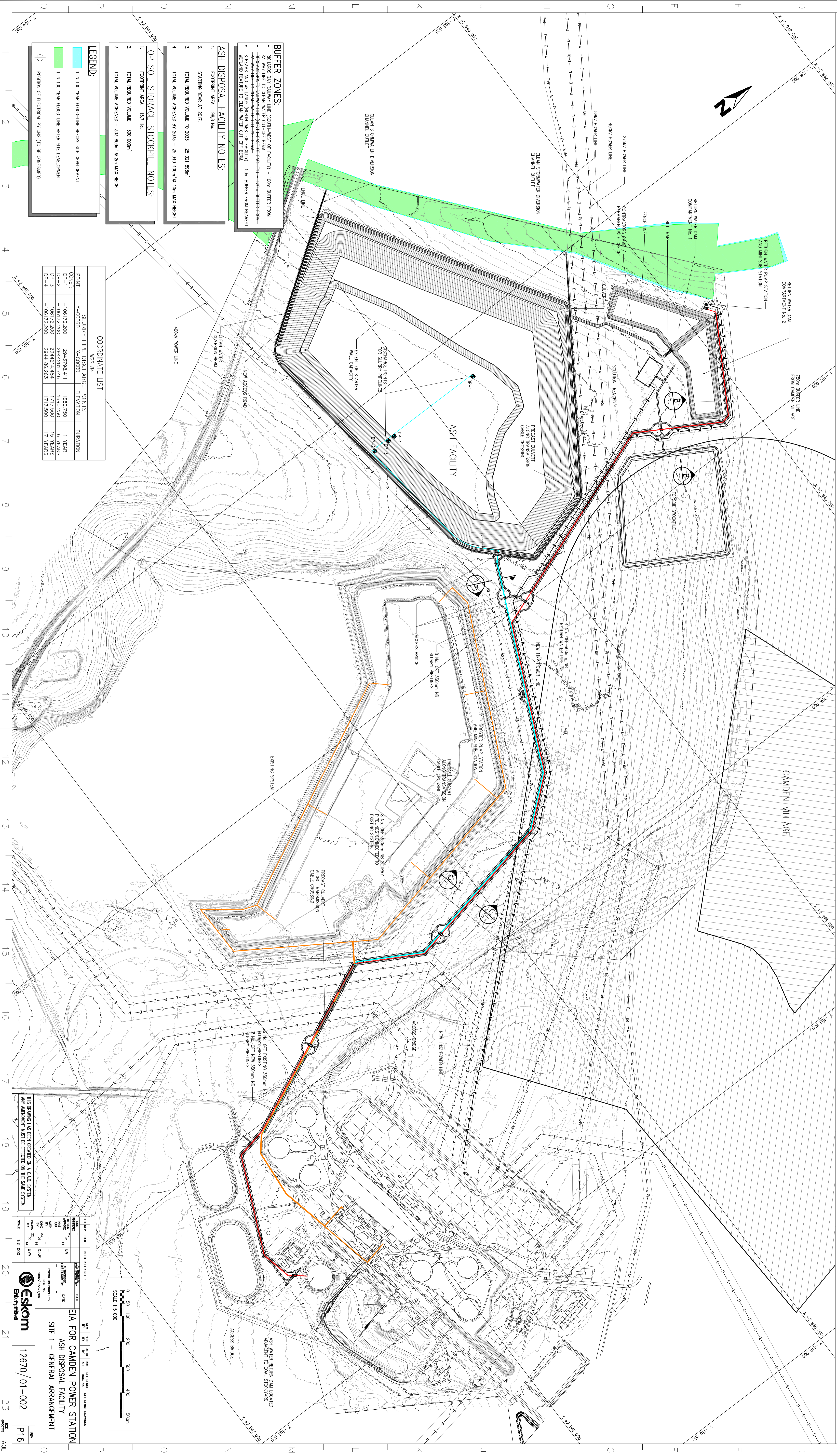
TYPICAL CROSS SECTION OF RETURN WATER PIPELINES

SECTION B  
1:100



TYPICAL CROSS SECTION OF SLURRY AND RETURN WATER PIPELINES

SECTION C  
1:100



- BUFFER ZONES:**
- 1. REQUIRED 5M BUFFER LINE (SOUTH-WEST OF FACILITY) - 100M BUFFER FROM
  - 2. EXISTING/PROPOSED HIGH-VOLTAGE TRANSMISSION CABLE CROSSING - 5M BUFFER FROM
  - 3. BUFFER LINE TO EXISTING WATER CATCHMENT (SOUTH-EAST OF FACILITY) - 100M BUFFER FROM
  - 4. BUFFER LINE TO EXISTING WATER CATCHMENT (WEST OF FACILITY) - 50M BUFFER FROM
  - 5. BUFFER LINE TO EXISTING WATER CATCHMENT (SOUTH-EAST OF FACILITY) - 100M BUFFER FROM
  - 6. BUFFER LINE TO EXISTING WATER CATCHMENT (WEST OF FACILITY) - 50M BUFFER FROM
  - 7. BUFFER LINE TO EXISTING WATER CATCHMENT (SOUTH-EAST OF FACILITY) - 100M BUFFER FROM
  - 8. BUFFER LINE TO EXISTING WATER CATCHMENT (WEST OF FACILITY) - 50M BUFFER FROM
  - 9. BUFFER LINE TO EXISTING WATER CATCHMENT (SOUTH-EAST OF FACILITY) - 100M BUFFER FROM
  - 10. BUFFER LINE TO EXISTING WATER CATCHMENT (WEST OF FACILITY) - 50M BUFFER FROM

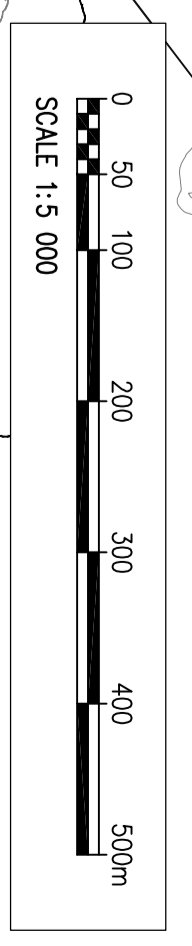
- ASH DISPOSAL FACILITY NOTES:**
1. FOOTPRINT AREA = 98.8 Ha.
  2. STARTING YEAR AT 2017.
  3. TOTAL REQUIRED VOLUME TO 2033 = 25 021 899m<sup>3</sup>.
  4. TOTAL VOLUME ADDED BY 2033 = 25 340 000m<sup>3</sup> @ 40m MAX HEIGHT.

- TOP SOIL STORAGE STOCKPILE NOTES:**
1. FOOTPRINT AREA = 15.7 Ha.
  2. TOTAL REQUIRED VOLUME = 300 000m<sup>3</sup>.
  3. TOTAL VOLUME ADDED = 300 000m<sup>3</sup> @ 2m MAX HEIGHT.

- LEGEND:**
- 1 IN 100 YEAR FLOOD-LINE BEFORE SITE DEVELOPMENT
  - 1 IN 100 YEAR FLOOD-LINE AFTER SITE DEVELOPMENT
  - POSITION OF ELECTRICAL PHASORS (TO BE CONFIRMED)

**COORDINATE LIST**

POINT	Y-COORD	X-COORD	ELEVATION	DURATION
CONTS				
GP-1	-106172.200	2943798.411	1680.750	1 YEARS
GP-2	-106172.200	2944281.748	1690.750	6 YEARS
GP-3	-106172.200	2944486.263	1717.200	17 YEARS
GP-4	-106172.200	2944486.263	1717.200	17 YEARS



**ESKOM**

12670/01-002

P16

EIA FOR CAMDEN POWER STATION  
ASH DISPOSAL FACILITY  
SITE 1 - GENERAL ARRANGEMENT

DATE: 20/08/2018

SCALE: 1:5 000

THIS DRAWING HAS BEEN CHECKED ON A CAD SYSTEM  
ANY AMENDMENT MUST BE EFFECTED ON THE SAME SYSTEM