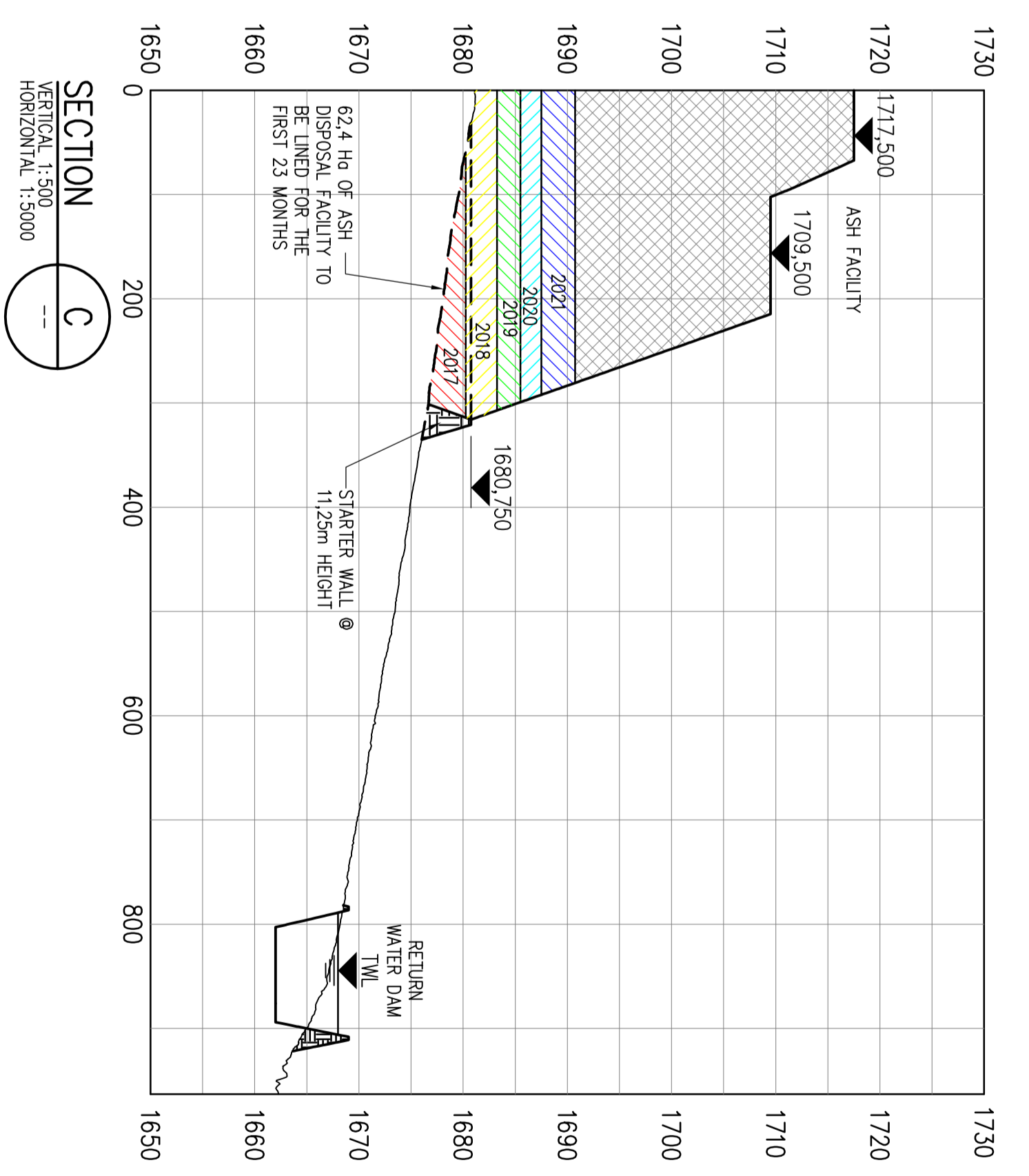
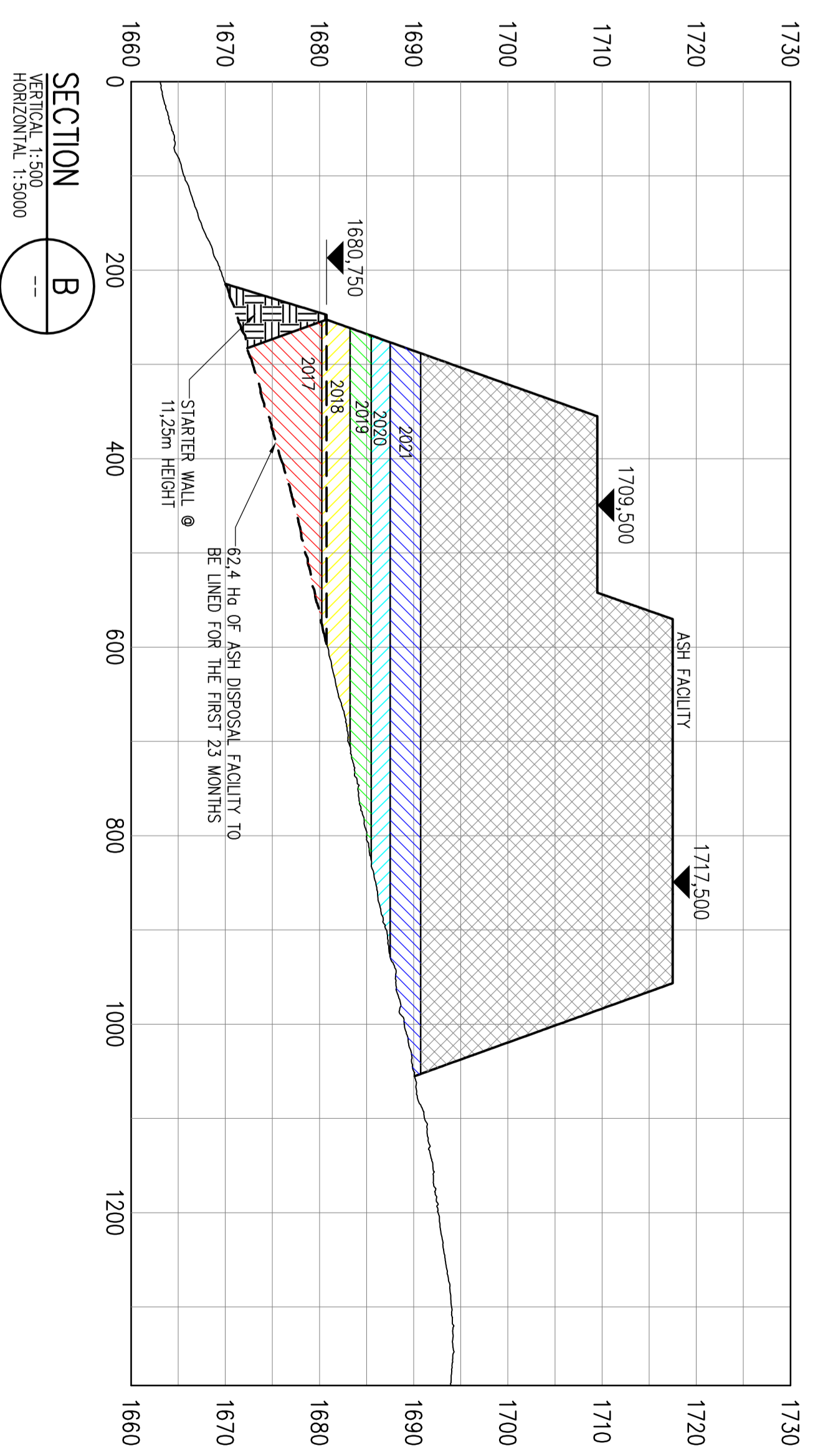
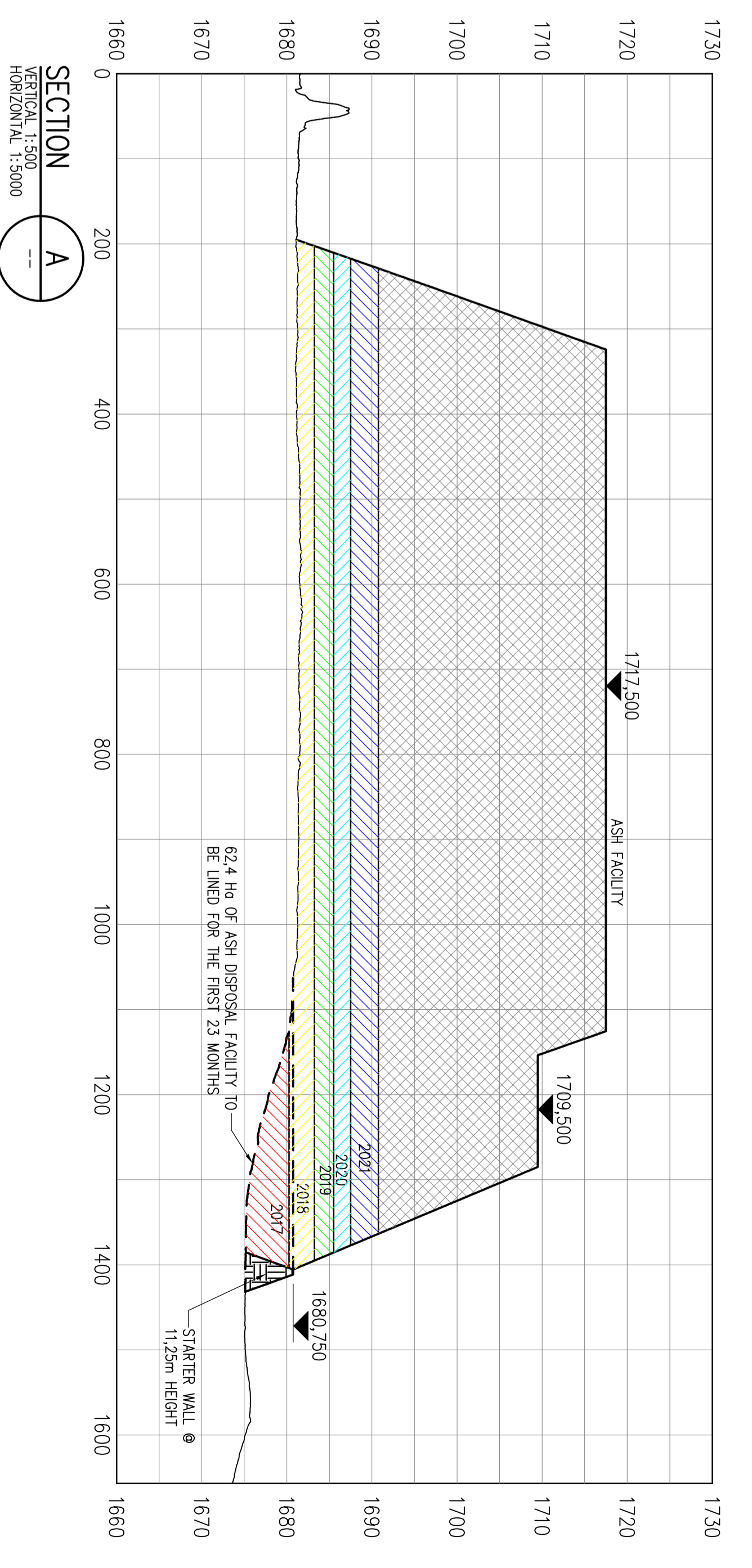


LAYOUT OF SITE 1
1:5000



RETURN WATER DAM
 TOTAL VOLUME: 386,915m³
 MAX. DEPTH: 6m
 MAX. CAPACITY: 386,915m³

ASH FACILITY
 FOOTPRINT AREA: 84.8 ha
 TOTAL VOLUME: 25.3 MILLION m³

THIS DRAWING HAS BEEN CREATED ON A CAD SYSTEM
 ANY AMENDMENT MUST BE EFFECTED ON THE SAME SYSTEM

NO.	DATE	BY	CHKD	REVISIONS
1	12/01/2011
2
3
4
5
6
7
8
9
10
11
12
13
14
15
16
17
18
19
20
21
22
23

Skom
 12670/02-001
 P10

**EIA FOR CAMDEN POWER STATION
 ASH DISPOSAL FACILITY
 SITE 1 - LAYOUT AND CROSS SECTIONS**