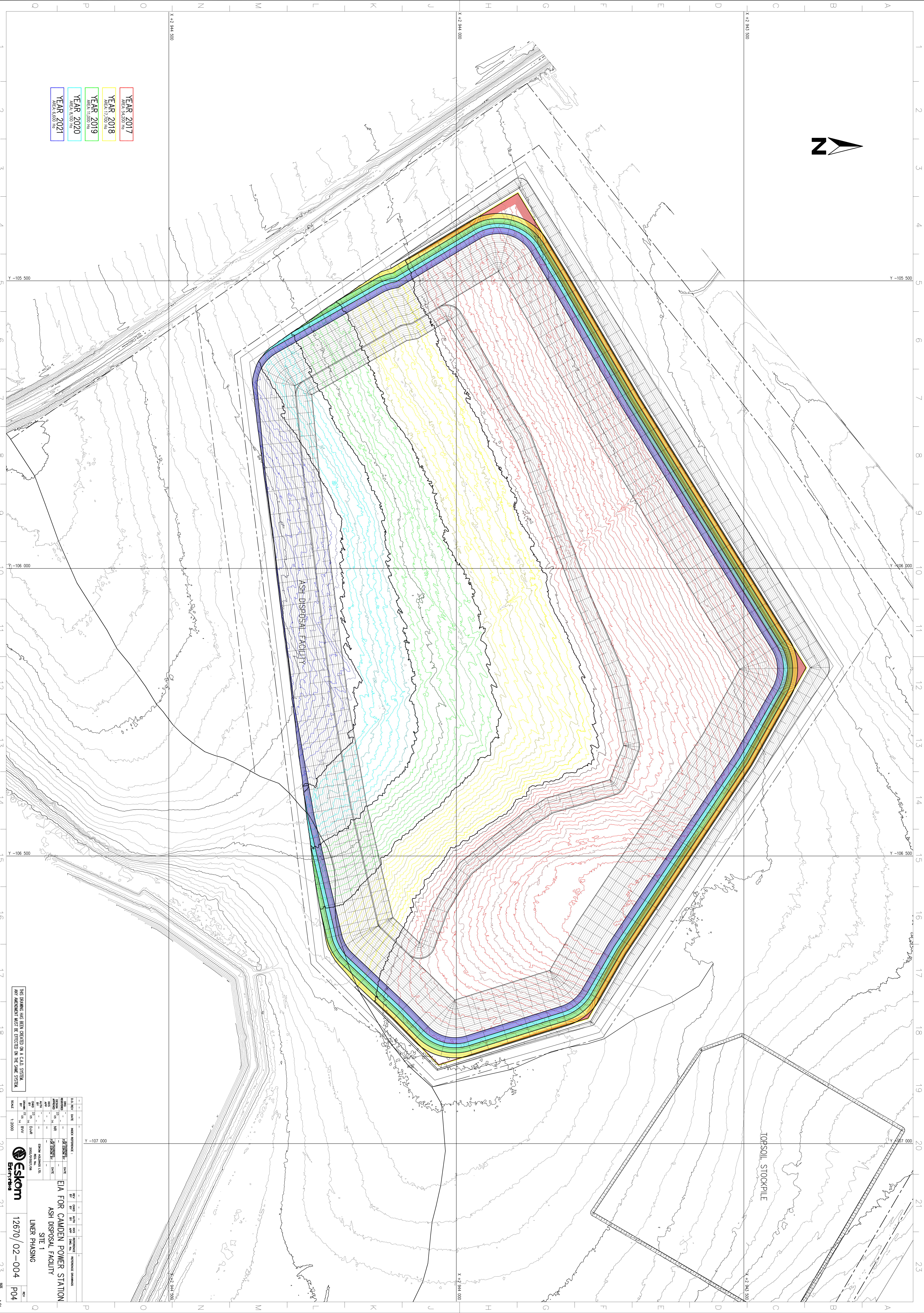


- YEAR 2017  
AREA: 5,600 Ha
- YEAR 2018  
AREA: 17,700 Ha
- YEAR 2019  
AREA: 1,000 Ha
- YEAR 2020  
AREA: 5,000 Ha
- YEAR 2021  
AREA: 6,600 Ha



THIS DRAWING HAS BEEN CREATED ON A CAD SYSTEM  
ANY AMENDMENT MUST BE EFFECTED ON THE SAME SYSTEM

NO.	REV.	DATE	DESCRIPTION	BY	CHKD	APP'D	REVISIONS
1							
2							
3							
4							
5							
6							
7							
8							
9							
10							
11							
12							
13							
14							
15							
16							
17							
18							
19							
20							
21							
22							
23							

**Skom**  
12670/02-004  
P04

**EIA FOR CAMDEN POWER STATION  
ASH DISPOSAL FACILITY  
SITE 1  
LINER PHASING**

Project: 12670 - EIA for the proposed extension of Camden Power Station (Camden Ashland) (Boreham) (12670-02-004-001.dwg) Sep 18, 2014 - 13:27pm  
Scale: 1:2000  
Date: 12/06/2014