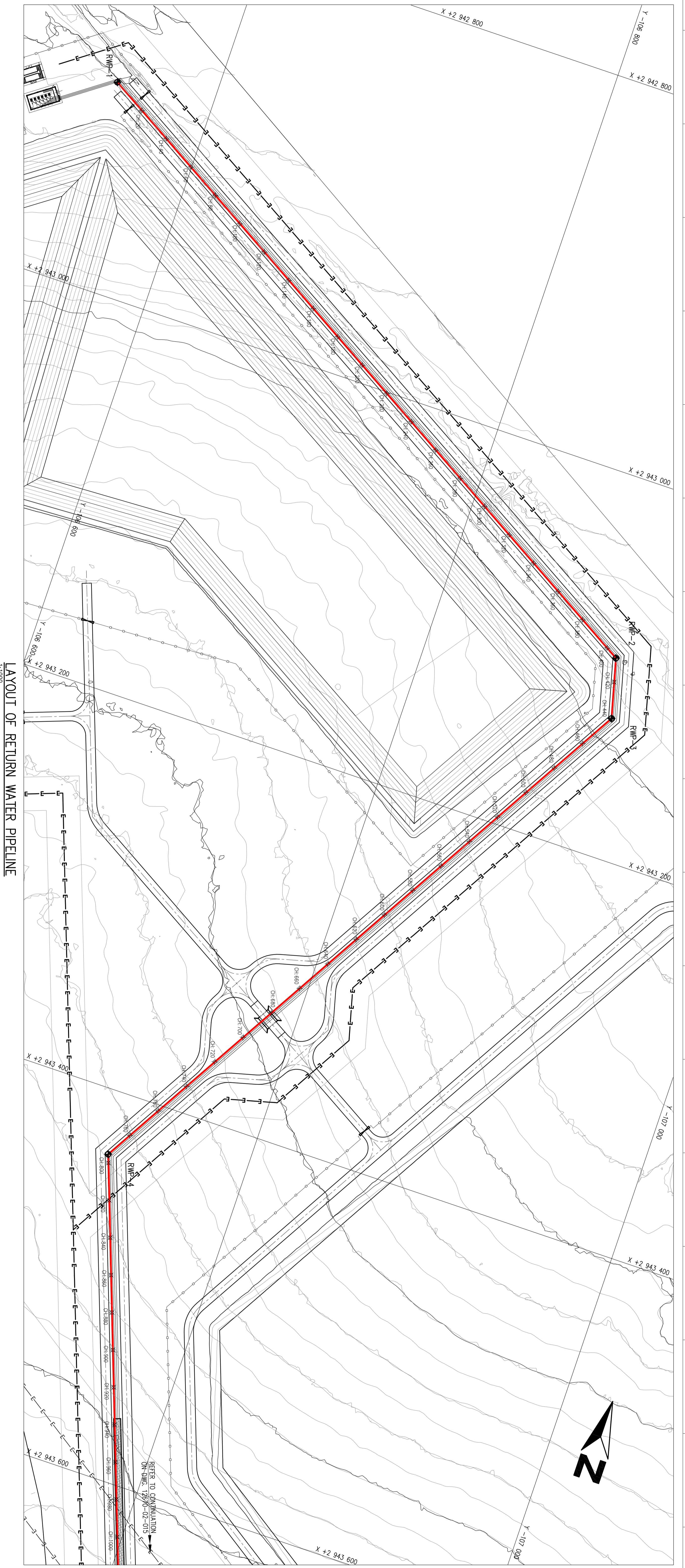
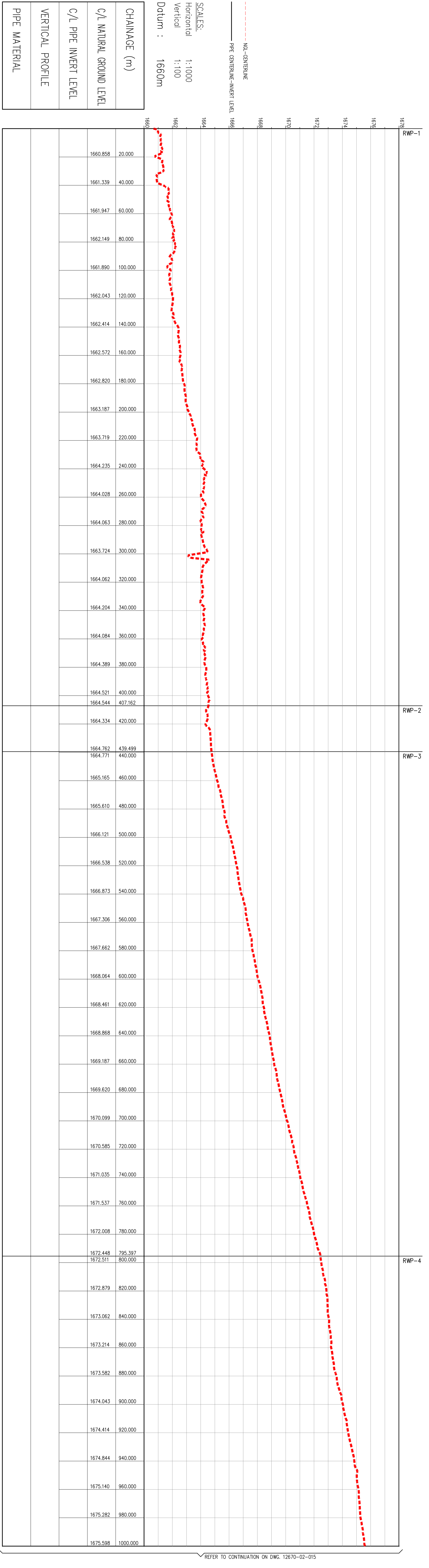


COORDINATE LIST			
MWS 84			
RETURN WATER PIPELINE - SETTING OUT POINTS			
POINT	Y-COORD	X-COORD	
RWP-1	-106647.811	2944889.420	
RWP-2	-106899.065	2943028.336	
RWP-3	-106907.227	2943128.627	
RWP-4	-109127.235	2942423.655	
RWP-5	-107577.434	2944571.147	
RWP-6	-107242.817	2944891.334	
RWP-7	-107562.276	2945318.888	
RWP-8	-108019.467	2945249.632	
RWP-9	-108417.674	2946371.633	
RWP-10	-108536.679	2946591.468	
RWP-11	-108583.908	2946492.179	



LAYOUT OF RETURN WATER PIPELINE
1:1000



LONGITUDINAL SECTION OF RETURN WATER PIPELINE
VERTICAL 1:100
HORIZONTAL 1:1000

THIS DRAWING HAS BEEN CREATED ON A CAD SYSTEM
ANY AMENDMENT MUST BE EFFECTED ON THE SAME SYSTEM

NO.	DATE	DESCRIPTION	BY	CHECKED	DATE	NO.	DATE	DESCRIPTION	BY	CHECKED	DATE
1		ISSUED FOR PERMIT				1		ISSUED FOR PERMIT			
2		REVISED				2		REVISED			
3		REVISED				3		REVISED			
4		REVISED				4		REVISED			
5		REVISED				5		REVISED			

Escom 12670/02-014 P01

EIA FOR CAMDEN POWER STATION
ASH DISPOSAL FACILITY - SITE 1
LAYOUT AND LONGITUDINAL SECTION OF
RETURN WATER PIPELINE (SHEET 1 OF 5)

REFER TO CONTINUATION ON DWG. 12670-02-015