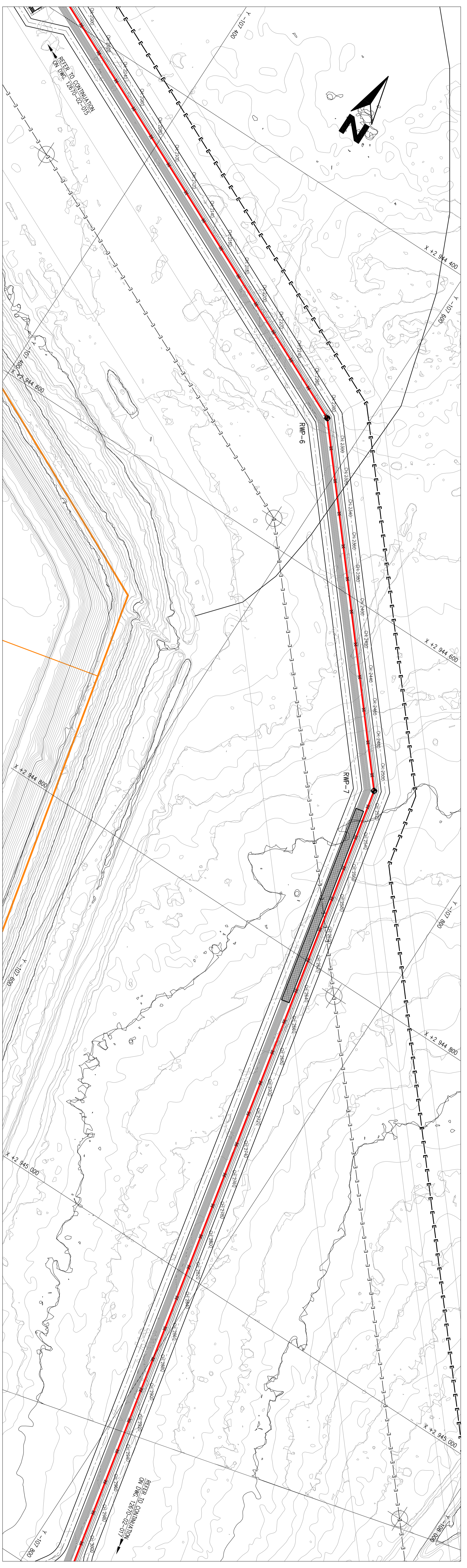


COORDINATE LIST			
WMS 84			
RETURN WATER PIPELINE - SETTING OUT POINTS			
POINT	Y-COORD	X-COORD	CHAINS
CONS-1	-10647.817	2942988.420	
RWP-2	-10669.956	2943095.336	
RWP-3	-10690.727	2943126.627	
RWP-4	-10727.738	2943133.655	
RWP-5	-10751.412	2943203.929	
RWP-6	-10774.817	2944691.334	
RWP-7	-10798.679	2945191.868	
RWP-8	-10771.597	2945564.185	
RWP-9	-10824.467	2946239.674	
RWP-10	-10847.574	2946537.584	
RWP-11	-10856.879	2946571.468	
RWP-12	-10856.879	2946571.468	
RWP-13	-10856.879	2946571.468	
RWP-14	-10856.879	2946571.468	

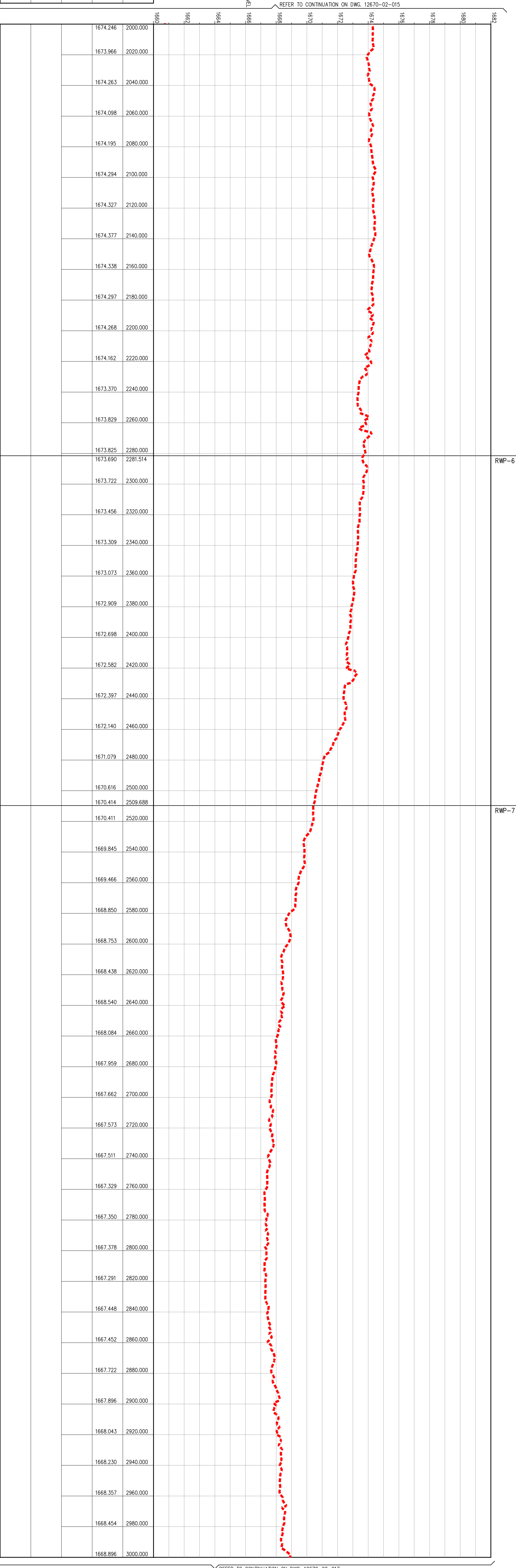


LAYOUT OF RETURN WATER PIPELINE
VERTICAL 1:1000

--- NO-CENTRELINE
--- PIPE CENTRE-INVERT LEVEL

SCALES:
Horizontal 1:1000
Vertical 1:100
Datum : 1666m

CHAINAGE (m)
C/L NATURAL GROUND LEVEL
C/L PIPE INVERT LEVEL
VERTICAL PROFILE
PIPE MATERIAL



LONGITUDINAL SECTION OF RETURN WATER PIPELINE
VERTICAL 1:1000
HORIZONTAL 1:1000

THIS DRAWING HAS BEEN CREATED ON A CAD SYSTEM
ANY AMENDMENT MUST BE EFFECTED ON THE SAME SYSTEM

NO.	DATE	REVISION	BY	CHKD	APP	INTD	REVISION COMMENTS

EIA FOR CAMDEN POWER STATION
 ASH DISPOSAL FACILITY - SITE 1
 LAYOUT AND LONGITUDINAL SECTION OF
 RETURN WATER PIPELINE (SHEET 3 OF 5)

Escom
 12670/02-016
 P01

Project: 12670 - EA for the proposed facilities of Camden Power Station (Camden) located at (approx) 32°58'30"S 151°01'30"E (approx) 32°58'30"S 151°01'30"E Date: Sep 15, 2014 - 8:27am