

**ROMANSRIVIER BA**  
**REGULATED BUFFER ZONES AND INFRASTRUCTURE LOCATIONS 1 – 16**

**Legend**

- Pylon Positions
- Existing Access
- New Access
- Powerline
- Other Road
- Arterial Road
- Perennial River
- Non-Perennial River
- ▨ Wetlands

**Regulated Buffer Zones**

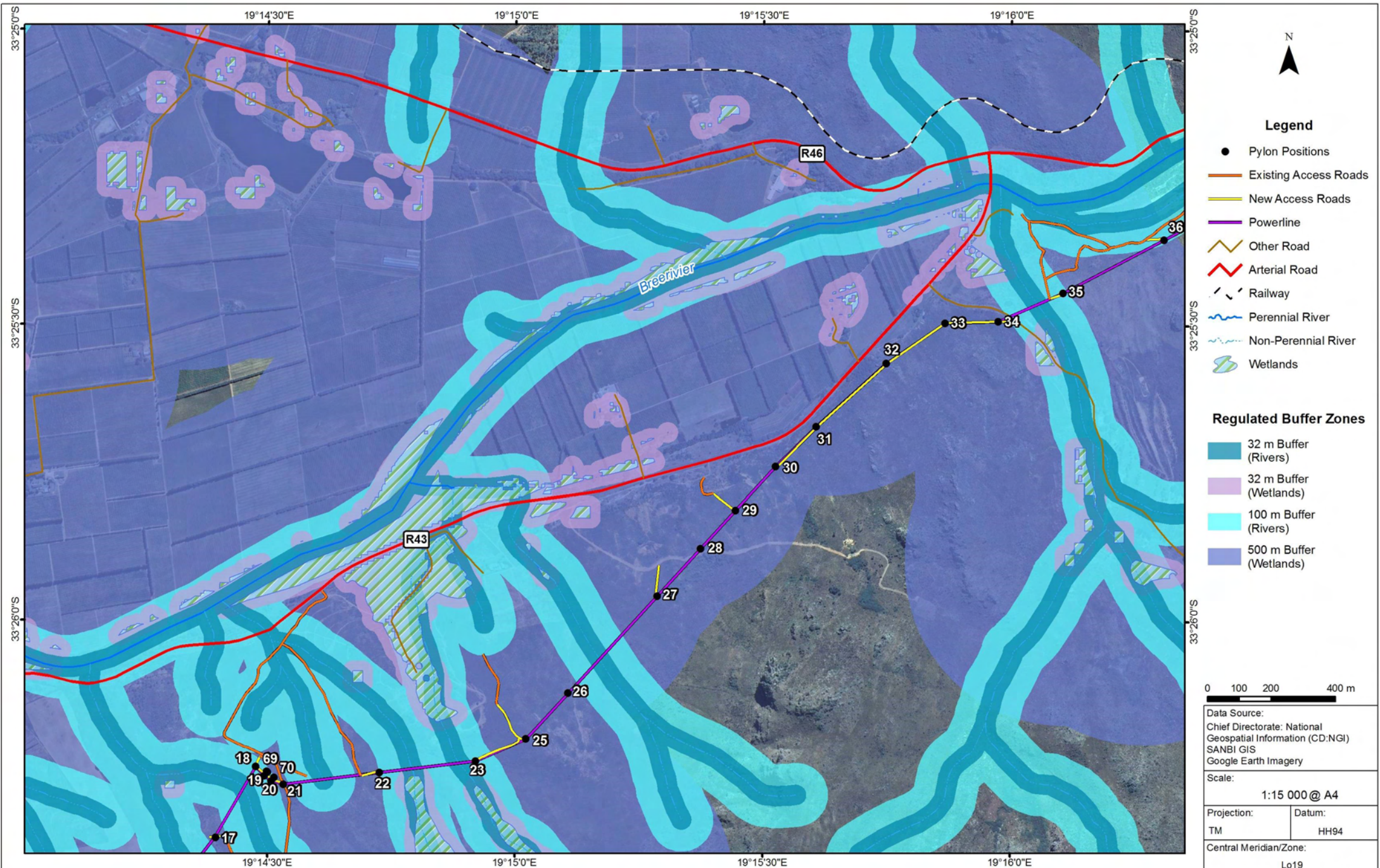
- 32 m Buffer (Rivers)
- 32 m Buffer (Wetlands)
- 100 m Buffer (Rivers)
- 500 m Buffer (Wetlands)

0 100 200 400 m

Data Source:  
 Chief Directorate: National Geospatial Information (CD:NGI)  
 SANBI GIS  
 Google Earth Imagery

Scale:  
 1:15 000 @ A4

Projection: TM	Datum: HH94
Central Meridian/Zone: Lo19	
Date: 11/08/2017	Compiled by: FUBM
Project No: 509264	Appendix: I1



Data Source: Chief Directorate: National Geospatial Information (CD:NGI) SANBI GIS Google Earth Imagery	
Scale: 1:15 000 @ A4	
Projection: TM	Datum: HH94
Central Meridian/Zone: Lo19	
Date: 11/08/2017	Compiled by: FUBM
Project No: 509264	Appendix: I2



**ROMANSRIVIER BA**  
**REGULATED BUFFER ZONES AND INFRASTRUCTURE LOCATIONS 36 – 49**

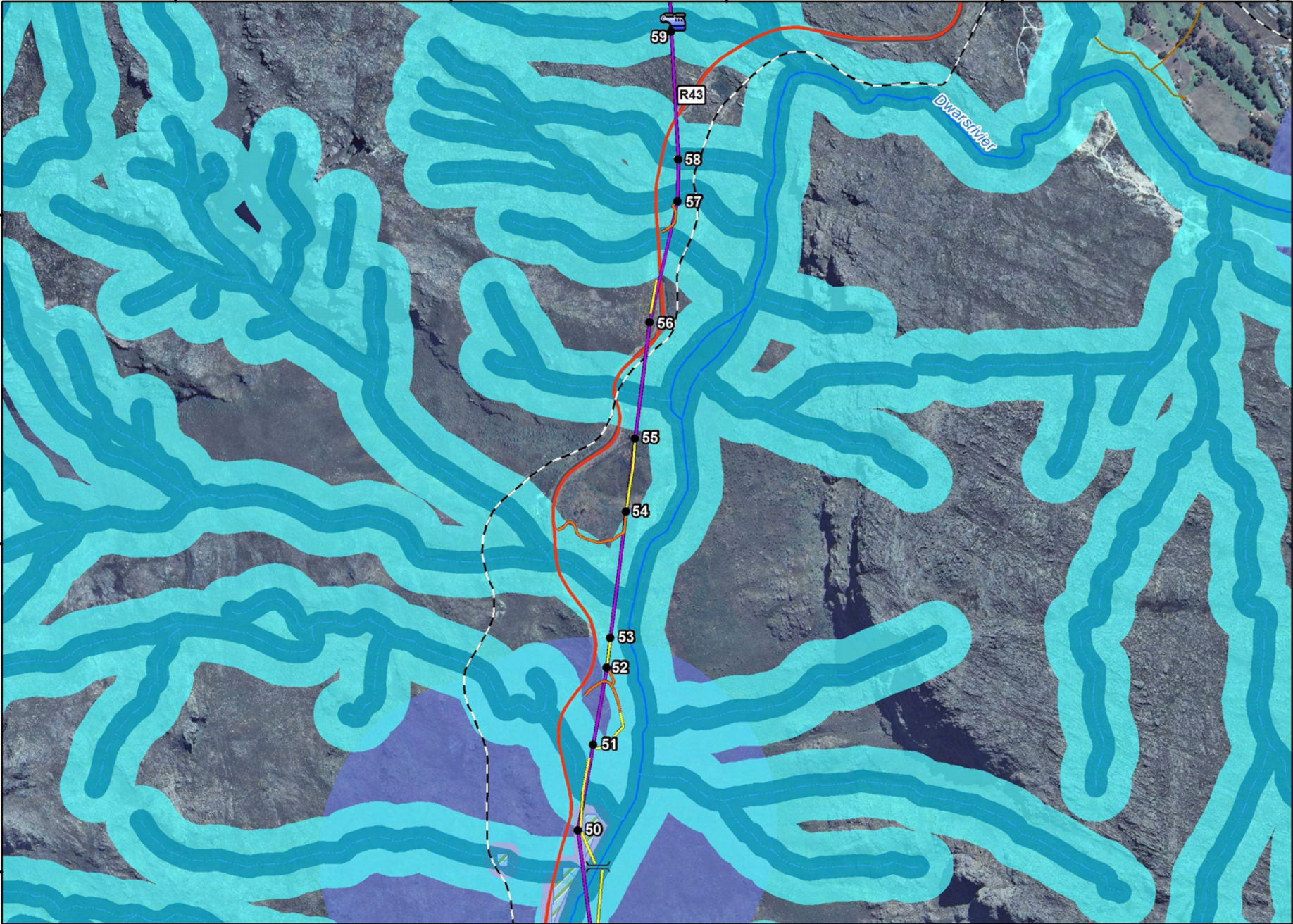
19°16'30"E 19°17'0"E 19°17'30"E 19°18'0"E 19°18'30"E

33°23'0"S

33°23'30"S

33°24'0"S

19°16'30"E 19°17'0"E 19°17'30"E 19°18'0"E 19°18'30"E

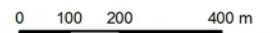


**Legend**

- Pylon Positions
- 🚁 Helicopter Assisted
- ⎓ RipRap Bridge
- Existing Access Roads
- New Access Roads
- Powerline
- Other Road
- Arterial Road
- Railway
- Perennial River
- Non-Perennial River
- 🌿 Wetlands

**Regulated Buffer Zones**

- 32 m Buffer (Rivers)
- 32 m Buffer (Wetlands)
- 100 m Buffer (Rivers)
- 500 m Buffer (Wetlands)



Data Source: Chief Directorate: National Geospatial Information (CD:NGI) SANBI GIS Google Earth Imagery	
Scale: 1:15 000 @ A4	
Projection: TM	Datum: HH94
Central Meridian/Zone: Lo19	
Date: 11/08/2017	Compiled by: FUBM
Project No: 509264	Appendix: I4



**ROMANSRIVIER BA**  
**REGULATED BUFFER ZONES AND INFRASTRUCTURE LOCATIONS 50 – 59**

