

BACKGROUND

The demand for electricity in Port Elizabeth and surrounding areas is getting very close to the amount of electricity currently available. In view of the anticipated increased demands from the Coega development and the expected average 1.5 % growth rate of Port Elizabeth and its surrounds, a more reliable and larger supply of electricity to the area is required. Very shortly, Eskom will have three 400 kV transmission lines running between Cookhouse and Port Elizabeth. However, the amount of electricity that these lines can supply is not sufficient, particularly if there is a fault or a line is required to be shut down for maintenance.

For these reasons, Eskom is proposing a new 400 kV transmission line from the Eros sub-station near Harding in KwaZulu-Natal to the Grassridge sub-station in Port Elizabeth. To ensure that this line is able to supply other major centres in the Eastern Cape with more electricity in the future, the line is also routed near Umtata and East London. The transmission line is approximately 650 km in length and each steel tower is approximately 40 m tall. The cross-ropes suspension tower design will be used (see diagram).

ENVIRONMENTAL IMPACT ASSESSMENT

The construction of an electricity transmission line is a listed activity in terms of current environmental legislation, requiring the proponent to undertake an Environmental Impact Assessment (EIA) ahead of construction activities.

Accordingly, Eskom has appointed Eyethu Engineers CC to undertake an EIA for the proposed Eros-Neptune-Grassridge 400kV transmission line. The findings of the EIA will be considered by the National Department of Environmental Affairs and Tourism (DEAT), with recommendations from the KwaZulu-Natal Department of Agriculture and Environmental Affairs and the Eastern Cape Department of Economic Affairs, Environment and Tourism. At the end of the process, DEAT will issue a Record of Decision that either approves the proposed project with conditions or rejects the project.

**ROUTE SELECTION
(refer to map overleaf)**

A number of technically feasible corridors (5 - 10 km wide) will be assessed during the EIA, with input from relevant authorities, Eskom, affected landowners, the public, other stakeholders and the EIA team, including specialists. The range of specialists selected for this study include people with expertise in the natural environment (e.g. ecosystems, plants, animals), landuse and economic activities (e.g. agriculture, conservation, tourism and settlement), cultural heritage resources (e.g. archaeology), the visual landscape and the human environment.

Once a preferred corridor has been selected, Eskom will negotiate a 55 m wide servitude within this corridor with the relevant landowners, and compensation terms agreed upon.

AGTERGROND

Die elektrisiteitsaanvraag in Port Elizabeth en omliggende gebiede is baie vinnig besig om die beskikbare hoeveelheid elektrisiteit in te haal. Met die oog op die verwagte toename in elektrisiteitsaanvraag van die Coega ontwikkeling en die geskatte gemiddelde 1.5 % groeikoers van Port Elizabeth en omliggende gebiede, word meer betroubare en groter elektrisiteitsvoorsiening in die area benodig. Eskom sal binnekort drie 400 kV transmissielynne tussen Cookhouse en Port Elizabeth hê. Die hoeveelheid elektrisiteit wat hierdie lyn kan lewer is egter nie voldoende nie, veral nie as daar 'n fout op een van die lyn is of wanneer 'n lyn afgesluit moet word vir herstelwerk nie. Om hierdie redes, stel Eskom 'n nuwe 400 kV transmissielyn vanaf die Eros sub-stasie naby Harding in KwaZulu-Natal tot by die Grassridge sub-stasie in Port Elizabeth voor. Om te verseker dat die lyn in die toekoms ander groot sentrums in die Oos-Kaap van meer elektrisiteit sal kan voorsien, sal die lyn naby Umtata en Oos Londen verbygaan. Die transmissielyn is ongeveer 650 km lank en elke staal toring is ongeveer 40 m hoog. Die kruis-lyn suspensie toring ontwerp sal gebruik word (sien diagram).

OMGEWING SIMPAKSTUDIE (OIS)

In terme van die OIS-regulasies van die Wet op Omgewingsbewaring vervat is, word omgewingsmagtiging vir die voorgestelde konstruksie van die transmissielyn vereis en moet Eskom 'n OIS onderneem voordat konstruksie begin.

Eskom het Eyethu Engineers CC aangestel as die Onafhanklike Omgewingskonsultant wat die OIS vir die Eros-Neptune-Grassridge 400 kV transmissielyn sal onderneem. Die bevindings van die OIS sal deur die Nasionale Departement van Omgewingsake en Toerisme (DEAT) oorweeg word. Aanbevelings sal deur die KwaZulu-Natal Departement van Landbou en Omgewingsake en die Oos Kaapse Departement van Ekonomiese Sake, Omgewing en Toerisme gemaak word. Aan die einde van die proses, sal DEAT 'n Rekord van Besluit uitreik wat die projek sal goedkeur onderhewig aan voorwaardes, of die projek sal afkeur.

**GESELEKTEERDE ROETE
(sien kaart)**

'n Aantal tegniese uitvoerbare roetes (5 - 10 km wydte) sal tydens die OIS, met die insae van die relevante owerhede, Eskom, geaffekteerde grondeienaars, die publiek, ander belangegroep, die OIS span en spesialiste ondersoek word. Die reeks spesialiste wat gekies is vir die studie sluit mense met kundigheid in die natuurlike omgewing (bv. Ekosisteme, plante, diere), grondgebruik en ekonomiese aktiwiteite (bv. Landbou, toerisme, vestiging), kultuurerfenis hulpbronne (bv. argeologie), die visuele landskap en die menslike omgewing in. Wanneer die gedetailleerde roete geselekteer is, sal 'n 55 m wye servituut met geaffekteerde grondeienaars onderhandel word en hulle sal vergoed word soos ooreengekom tydens onderhandelings.

IMVELAPHI

Iimfuno zombane eBhayi neziphaluka zikufutshane kakhulu ekuwufinceni umthamo wombane osele ukho ukuxhasa le ngingqi. Xa kujongwa umbane ekuqikelelwa ukuba uza kufunwa lela zibuko laseNgurha kunye nento yokuba iBhayi neziphaluka iza kukhulange 1.5 %, kubakho imfuneko engamandla yokuba kwandiswe amandla asiwa kule ngingqi. Kwakamsinyane nje, uEskom uza kuba neentambo zombane ezintathu eziyi-400kV inye, eziza kuhamba phakathi kweCookhouse neBhayi. Ezi ntambo noko azingekwazi ukumelana neemfuno zombane kuloo ngingqi, ngakunxa yezi zizathu ke uEskom eceba ukufakela enye intambo ehambisa umbane oyi400kV, osuka kwizikwana iEros kufutshane neHarding kwaZulu Natal ukuya kwizikwana iGrassridge eBhayi. Ukuqinisekisa ukuba kwixa elizayo nezinye iindawo zeMpuma Koloni ziyaxhamla kolufakelo, le ntambo intsha iyakunyathela eMtata naseMonti. Ezi ntambo zingangama- 650km ubude kwaye ziza kuxhonywa kwiintsimbi ezingayi- 40m ukuphakama. Indlela eza kusetyenziswa ukuxhoma ezi ntambo kuthiwa yicross-ropes suspension tower design (jonga umfanekiso).

UPHANDO NGEFUTHE KOKUSINGQONGILEYO

Ngokomthetho okhoyo ngoku ojongene nokusingqongileyo, phambi kokuba kwenziwe nayiphina into edibene nokwakha, njengokuba uEskom eza kwenza kolufakelo ntambo, kufanele loo mntu unqwenela ukwenza umsebenzi aqale ajonge ukuba loo nto aceba ukuyenza iza kuyichaphazele njani na indalo.

UEskom uye waqesha uEyethu, oyinkampani yeenjineli ukuba enze uphando lokuchaphezeleka kwendalo. Iziphumo zolo phando ziyakuqwalaselwa liSebe likazwelonke lwemicimbi yokusingqongileyo nezokhenketho (DEAT). Liya kusebenzisana neSebe lezolimo nezendalo kwaZulu Natal kunye neSebe lemicimbi yezoqoqosho, ezendalo nokhenketho eMpuma Koloni. Yakuba igqityiwe yonke le nkquleghu, ela sebe likazwelonke lezendalo nokhenketho lilo eliya kwenza isigqibo sokuyamkela okanye siyikhabe le mbono kaEskom, ngokubona iziphumo zophando ukuba zithini na.

**UKHETHO LWENDLELA EZA KUHAMBA
EZI NTAMBO (jonga imaphu ephepheni
elilandelayo)**

Ngexesha lophando ngokuchaphazeleka kwendalo, kuya kukhangelwa eyona ndlela (5 ukuya kwi-10km ububanzi) ekufanele ihanjwe zezo ntambo zombane. Esi sigqibo sixhomekeke kwizimvo zabantu abaninzi: Eskom, abanini mhlaba abachaphazelekayo, uluntu ngokubanzi, abanye oosomagunya, iqela elenza uphando nabanye oom akhwekhwetha. Aba makhwekhwetha baquka abantu abanolwazi ngezindalo, usetyenziso mhlaba nezoqoqosho, ezenkcubeko, ezobume bomhlaba kunye nabo bajongene nemicimbi yezoluntu.

ANTICIPATED PROGRAMME

Study begins: Beg. February 2003

Project announcement: Mid-March 2003

Identification of issues:
Beg March - Mid-May 2003

Closing date for public comment:
16 May 2003

Drafting of Scoping Report: Mid - June 2003

Distribution of Draft Scoping Report for
comment: End June 2003

Plan of Study for Environmental Impact
Assessment: July 2003

Environmental Impact Report (EIR):
August and October 2003

Distribution of EIR for Comment:
Beg. November 2003

Submission of EIR to DEAT:
End November 2003

Record of Decision by DEAT

Feedback to registered I&APs

INVITATION TO PARTICIPATE

Public participation is an integral part of an EIA. Anyone who is interested or affected by the proposed project has a right to participate.

Please make use of the following opportunities:

- Study the information made available in this Background Information Document, at meetings, on the website, and in the Draft Scoping and Environmental Impact Reports.
- Attend the Public Open Days and workshops to obtain further project information, interact on a one-to-one basis with the Project Team, and/or raise issues and concerns.
- Contact the Public Participation Office to obtain further project information, and/or raise issues and concerns.
- Register as an Interested and Affected Party and be included on the database in order to receive future project information and/or formally record issues and concerns.
- Complete the comment sheet and return either in person, or by mail, fax or e-mail.
- Visit Eskom's website to register, view information and/or submit comment (www.eskom.co.za/eia).

VERWAGTE PROGRAM

Studie begin: Februarie 2003

Projek aankondiging: Middel Maart 2003

Identifisering van kwessies:
Begin Maart - middel Mei 2003

Sluitingsdatum vir publieke kommentaar:
16 Mei 2003

Konsep Omvangverslag: Mid Junie 2003

Verspreiding van Konsep Omvangverslag
vir kommentaar: Einde Junie 2003

Plan vir Studie van OIV: Julie 2003

Omgewingsimpakverslag (OIV) Augustus -
einde Oktober 2003

Verspreiding van OIV vir kommentaar: Begin
November 2003

Inhandiging van OIV aan DEAT: Einde
November 2003

Rekord van Besluit deur DEAT

Terugvoer na geregistreerde
Geïnteresseerde & Geïmpakteerde Partye

UITNODIGING OM DEEL TE NEEM

Publieke deelname is 'n integrale komponent van enige OIS-proses. Enige een wat geïnteresseerd is of geïmpakteer word deur die beplande projek, het 'n reg om deel te neem. Maak asseblief gebruik van die volgende geleentheid om deel te neem:

- Bestudeer die beskikbare inligting in die Agtergrond-Inligting Dokument by vergaderings, op die webwerf en in die konsep Omvangverslag.
- Woon 'n publieke opedag by om verdere inligting te bekom, skakel op 'n een-tot-een basis met die Projek Span, en/of opper kwessies en bekommernisse (sien kaart vir detail).
- Kontak die Publieke Deelname Kantoor om verdere projek inligting te bekom en/of kwessies en bekommernisse te opper.
- Registreer as 'n geïnteresseerde en/of geïmpakteerde partye en word sodoende ingesluit op die databasis om verdere projek inligting te bekom en/of vermeld kwessies en bekommernisse formeel.
- Voltooi die kommentaar vorm en handig in by

die publieke deelname kantoor, pos, faks of e-pos dit.

- Besoek Eskom se webwerf (www.eskom.co.za/eia) om te registreer, inligting te bekom of kommentaar te lewer.



Kusakube kuvunyelwene ngeyonandlela iza kuhanjwa zezi ntabo, umhlaba ongama-55m macala olucingo ungachaphazeleka. Oku kuthetha ukuba izindlu nemihlaba yabantu ekulo mgama ingachaphazeleka kuze ke kuvunyelwane nabo bantu ukuba zidilizwe baze bahlawulwe/babuyekwezwe ngokufanelekileyo.

INKQUBO ECETYWAYO

Kuqaliswa umsebenzi:
Ekuqaleni kukaFebruwari 2003

Ukwaziswa kweproject eluntwini:
Phakathi kuMatshi 2003

Ukuchongwa kwezinto ezinokuba
ukuqwalaselwa: Ekuqaleni kokuqalisa ukuya
phakathi kuMeyi 2003

Usuku lokuyalula kweemibuzo
zolutu ngokubanzi: Meyi 2003

Ukubhalwa kweScoping Report:
Meyi ukuya kuJunie 2003

Ukuhanjiswa kwale nqubo kwaba
abantu kuMeyi 2003

Ukuqaliswa kweEIR: Ekuqaleni kuJunie 2003

Inkqubo yomlando yegalelo
kokusingqongileyo: Julayi 2003

Inkqubo yegalelo lomsebenzi
kokusingqongileyo ngasti ukuya
ekuqaleni kuka-Oktobha 2003

Ukuqaliswa kwale ngxelo kwabanye
abantu ukuze bahlomle:
Ekuqaleni kukaNovemba 2003

Ukufakwa kwale ngxelo kwiSebe
likazwelonke lwemicimbi
yokusingqongileyo nezokhenketho:
Ekuqaleni kukaNovemba 2003

Ukuthatyathwa kwesigqibo liSebe
likazwelonke lwemicimbi yokusingqongileyo
nezokhenketho

Ukunikwa kwengxelo kwabo bantu
bahlalise njengabantu abanomdla nabo
bachaphazelekayo

Ukunikwa kwengxelo kwabo bantu
bahlalise njengabantu abanomdla nabo
bachaphazelekayo

Ukunikwa kwengxelo kwabo bantu
bahlalise njengabantu abanomdla nabo
bachaphazelekayo

Ukunikwa kwengxelo kwabo bantu
bahlalise njengabantu abanomdla nabo
bachaphazelekayo

Ukunikwa kwengxelo kwabo bantu
bahlalise njengabantu abanomdla nabo
bachaphazelekayo

Ukunikwa kwengxelo kwabo bantu
bahlalise njengabantu abanomdla nabo
bachaphazelekayo

Ukunikwa kwengxelo kwabo bantu
bahlalise njengabantu abanomdla nabo
bachaphazelekayo

Ukunikwa kwengxelo kwabo bantu
bahlalise njengabantu abanomdla nabo
bachaphazelekayo

Ukunikwa kwengxelo kwabo bantu
bahlalise njengabantu abanomdla nabo
bachaphazelekayo

Ukunikwa kwengxelo kwabo bantu
bahlalise njengabantu abanomdla nabo
bachaphazelekayo

Ukunikwa kwengxelo kwabo bantu
bahlalise njengabantu abanomdla nabo
bachaphazelekayo

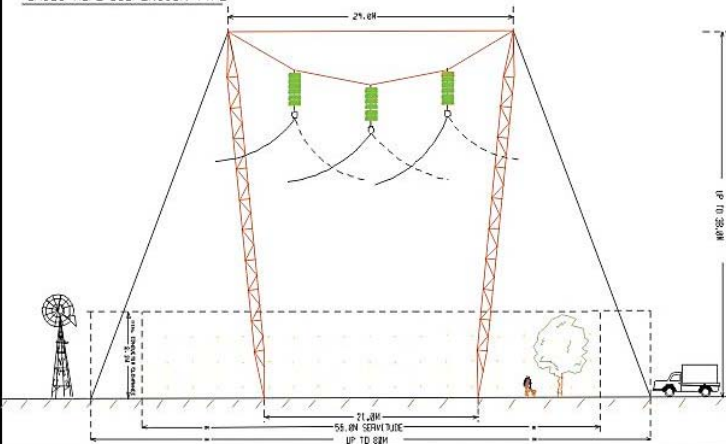
Ukunikwa kwengxelo kwabo bantu
bahlalise njengabantu abanomdla nabo
bachaphazelekayo

Ukunikwa kwengxelo kwabo bantu
bahlalise njengabantu abanomdla nabo
bachaphazelekayo

Ukunikwa kwengxelo kwabo bantu
bahlalise njengabantu abanomdla nabo
bachaphazelekayo

Ukunikwa kwengxelo kwabo bantu
bahlalise njengabantu abanomdla nabo
bachaphazelekayo

SERVITUDE AND CONDUCTOR CLEARANCE
400KV TRANSMISSION LINE
CROSS-ROPE SUSPENSION TYPE



ISIMEMO SOKUTHABATHA INXAXHEBA

Ukuthatha inxaxheba koluntu ngokubanzi yenye yezinto ezibalulekileyo xa kusenziwa uphando ngokuchaphazeleka kokusingqongileyo. Nabani na onomdla okanye ochaphazelekayo yile project icetywayo unelungelo lokuthatha inxaxheba. Nceda usebenzise la mathuba alandelayo:

- Funda yonke inkcazelo enikiweyo ngemvelaphi yale project
- Yiya kwintlanganiso eyakube ivuleleke kuluntu jikelele, ukuze ufumane ulwazi oluthe vetshe. Thetha ubuso ngobuso neqela elisebenza kule project uze ubuze/uveze zonke izinto ezingakomwabisiyo okanye ongaziqondiyo.
- Qhagamshelana ne-ofisi yothatho nxaxheba luluntu (Public participation) ukufumana ulwazi oluthe vetshe uze ubuze nezinye izinto ongaziqondiyo.
- Bhalisa njengomnye wabantu abanomdla okanye abachaphazelekayo, ukuze igama lakho libekho ezincwadini zabanini project khon'ukuze bahlale bekwazisa ngokuqhubekayo malunga nale project. ...

SPECIALIST STUDIES

The following specialist input will be obtained as part of Scoping:

- ♦ **Avifauna (birds):** Chris van Rooyen, Endangered Wildlife Trust
- ♦ **Cultural heritage (e.g. archaeology):** Len van Schalkwyk, eThembeni Cultural Heritage
- ♦ **Ecology:** Willem de Frey, Ekolnfo
- ♦ **Land Use:** Garry Patterson, Institute for Soil Climate and Water
- ♦ **Social:** Johan van der Walt, ACER (Africa)
- ♦ **Soils & geology:** GV Price, Terreco
- ♦ **Visual:** Menno Klapwyk, Cave Klapwyk & Associates
- ♦ **Zoology:** Dewald Kamffer, Ecocheck

Issues requiring further study will be investigated during the detailed impact assessment phase, and this may require additional specialists.

WILL YOU BE AFFECTED BY THE PROPOSED TRANSMISSION LINE?

A study area (see map), wherein the proposed line can be constructed, has been identified. It is necessary to determine the constraints within the study area, before a decision can be made on the routing of the line. The corridors shown vary in width between 5 and 10 km.

The main settlements, towns and cities near which the different corridors pass include: Harding, Ludeke, Flagstaff, Libode, Umtata, Idutywa, Butterworth, East London, Mdantsane, Bisho, King Williams Town, Peddie, Grahamstown, Sidbury, Alicedale, Paterson, Cannonvale and Colchester (both Port Elizabeth). **See BID 2 for new areas potentially affected.**

During the EIA process, additional corridors may be identified in the area. To ensure that you are kept up to date, register as an Interested and Affected Party (I&AP).

If you are unsure about whether you may be affected, contact the Public Participation office for assistance.

SPESIALIS STUDIES

Die volgende insette sal van spesialiste verkry word as deel van die Omvangsbepaling:

- ♦ **Avifauna (voëls):** Chris van Rooyen, Endangered Wildlife Trust
- ♦ **Kultuurerfenis (bv. argeologie):** Len van Schalkwyk, eThembeni Cultural Heritage
- ♦ **Ekologie:** Willem de Frey, Ekolnfo
- ♦ **Grond-gebruik:** Garry Patterson, Instituut vir Grond, Klimaat en Water
- ♦ **Sosiale Impak:** Johan van der Walt, ACER (Africa)
- ♦ **Grond & Geologie:** GV Price, Terreco
- ♦ **Visuele Impak:** Menno Klapwyk, Cave Klapwyk & Associates
- ♦ **Dierkunde:** Dewald Kamffer, Ecocheck

Kwessies wat verdere studie vereis sal ondersoek word tydens die gedetailleerde impakbepalingsfase. Dit mag moontlik addisionele spesialis studies verlang.

HOE OM TE WEE OF U GEAFFEKTEER GAAN WORD DEUR DIE VOORGESTELDE TRANSMISSIELYN?

Die studie area (sien kaart), waarin die voorgestelde lyn opgerig gaan word is reeds geïdentifiseer. Dit is noodsaaklik om die beperkings binne die studie area te bepaal voordat 'n besluit oor die roete van die lyn geneem kan word. Die voorgestelde korridors wissel tussen 5 en 10 km in wydte.

Die hoof nedersettings, dorpe en stede naby aan die verskillende korridors sluit in: Harding, Ludeke, Flagstaff, Libode, Umtata, Idutywa, Butterworth, Oos Londen, Mdantsane, Bisho, King Williams Town, Peddie, Grahamstad, Sidbury, Alicedale, Paterson, Cannonvale en Colchester (byde in Port Elizabeth). **Sien AID 2 vir nuwe potensieel geaffekteerde areas.**

Gedurende die OIS proses sal addisionele korridors in die area geïdentifiseer word. Om te verseker dat u op hoogte bly, registreer as 'n Geïnteresseerde en Geaffekteerde Party.

Indien u onseker is of u geaffekteer gaan word, skakel die Publieke Deelname Kantoor vir hulp.

- ♦ Zalisa uxwebhu lokuhlomla uze uluthumele: ngesandla, iposi, fax okanye ngekompuyutha.
- ♦ Khangela kwikompuyutha iziko lwakaEskom ubhalise, ujonge okukhoyo uze uvakalise noluvo lwakho (www.eskom.co.za/ela).

IINGCALI EZIBANDAKANYIWEYO

Ezi zifundo zilandelayo ziza kwenziwa njengenxenyeyo yophando:

- ♦ **Inzululwazi ngezakudala:** Len van Schalkwyk, eThembeni Cultural Heritage
- ♦ **Izifundo ngeentaka:** Chris van Rooyen, Endangered Wildlife Trust
- ♦ **Izifundo ngezinto eziphilileyo ngokunzulumene nendawo eziphila kuyo:** Willem de Frey, Ekolnfo
- ♦ **Usetyenziso lomhlaba:** Garry Patterson, Institute for Soil Climate and Water
- ♦ **Iimpembelelo ekuhlaleni:** Johan van der Walt, Acer (Africa)
- ♦ **Izifundo ngemihlaba nenzululwazi ngokwakhiwa komhlaba:** GV Price, Terreco
- ♦ **Iimpembelelo kwimbonakalo:** Menno Klapwyk, Cave Klapwyk & Associates
- ♦ **Izifundo zenzululwazi ngezilwanyana:** Dewald Kamffer, Ecocheck

WAZI NJANI UKUBA UNGACHAPHAZELEKA LULUFAKELO NTAMBO?

Sele zikhethiwe iindawo ekucingwa ukuba ziza kunqumla kuzo ezi ntambo zombane. Kubalulekile ukuba zonke izinto ezingayingxaki okanye iziphazamiselo ekufakelweni kwezi ntambo ziqwalaselwe kwangoku, phambi kokuba kuthathwe isigqibo esimiyo. Ububanzi beendawo ezizakusetyenziswa kwindawo nganyebuphakathi kweemitha ezi5 nezili-10.

Iindawo ezinkulu ezi ntambo eziza kudlula kufuphi nazo zezi: Harding, Ludeke, Flagstaff, Libode, Umtata, Dutywa, Gcuwa, Monti, Mdantsane, Bisho, Qonce, Ngqushwa, Rhini, Sidbury, Alicedale, Paterson, neBhayi (Cannonvale neColchester). **Iindawo ezintsha ezingahlelwa zichaphazeleka ziboniswe kwincwadana yesibini enika inkcazelo ngemvelaphi yalo mcimbi**

Kungenzeka kongezwe ezinye iindawo ngexesha uqhubekeka umsebenzi wokujonga ukuchaphazleka kwendalo/kokusingqongileyo. Ukuqinisekisa ukuba uhlala usazi okwenzekayo, bhalisa njengomntu onomdla nochaphazelekayo ngulo mcimbi.

Ukuba akuqinisekanga ngochaphazeleko lwakho, qhagamshelana ne-ofisi ejongene nothatho nxaheba koluntu jikelele ucele amancedo.

We would welcome your presence at one of the following **Public Open Days:**

At the beginning of each Public Open Day, a short presentation of the project will be given. The project team will be available for the entire time and detailed maps will be on display for those interested.

U teenwoordigheid by die volgende **Publieke Opedae** sal hoog op prys gestel word:

Aan die begin van elke Publieke Opedag sal 'n kort voorlegging van die projek gedoen word. Die projekspan sal beskikbaar wees vir die duur van die opedag en gedetailleerde kaarte sal uitgestal word vir diegene wat geïnteresseerd is.

Centre	Date	Time	Venue
Harding	Monday, 5 May 2003	12:00 – 17:30	Umuziwabano Municipality Town Hall, Marchison Street
Umtata	Tuesday, 6 May 2003	12:00 – 17:30	King Sabata Dalindyebo Municipality City Hall, Corner Red and Owen Streets
Butterworth	Wednesday, 7 May 2003	12:00 – 17:30	Butterworth Town Hall, Corner King and Luda Streets
East London	Thursday, 8 May 2003	12:00 – 17:30	City Municipality City Hall, Oxford Street
Grahamstown	Friday, 9 May 2003	12:30 – 17:30	Makana Municipality City Hall, 111 Main Street, Church Square
Cannonvale, Port Elizabeth	Friday, 9 May 2003	11:00 – 16:00	San Dunes Community Hall, Cannonvale

Iintsuku ezivulelekileyo eluntwini - Sovuyiswa bubukho bakho kolunye lwezi ntsuku zivulelekileyo kuluntu ngokubanzi: Kusuku ngalunye kwezi zidweliswe apha ngasentla, kuya kunikwa inkcazelo ngeproject le, phambi kokuba kuqaliswe ngengxoxo. Iqela elisebenza kwiproject le liya kubakho ngazo zonke ezi ntsuku kwaye neemaphu ziya kube zixhonyinyiwe, zibonisa zonke iinkcukacha ngalo mcimbi.

PUBLIC PARTICIPATION OFFICE: CONTACT DETAILS

Teresa Barkhuizen
PO Box 509
Grahamstown, 6140
Tel: 046 622 7223
Fax: 046 622 9761

E-mail: EskomENG@acerafrica.co.za
Website address: www.eskom.co.za/eia