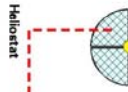
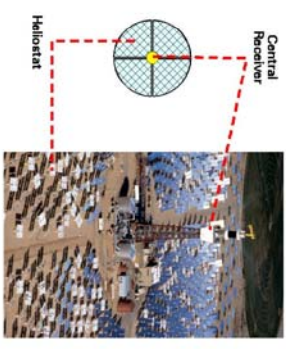


CSP Concentrating Solar Power Plant - Northern Solar Cape

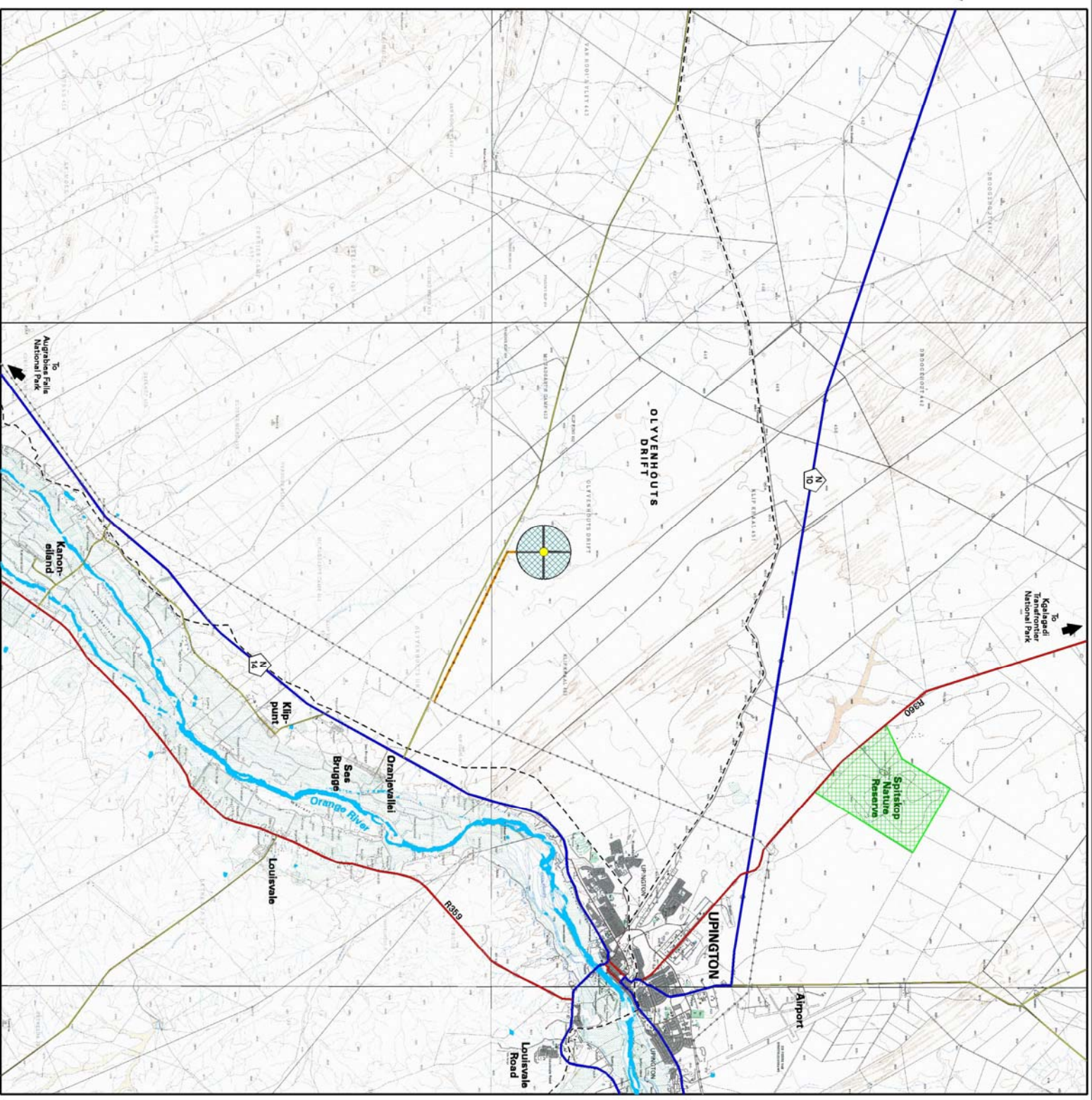
Map 1: Locality

-  National Road
-  Main Road
-  Secondary Road
-  Railway Line
-  Proposed Transmission Line
-  Orange River
-  Nature Reserve

Concentrating Solar Power (CSP) Plant



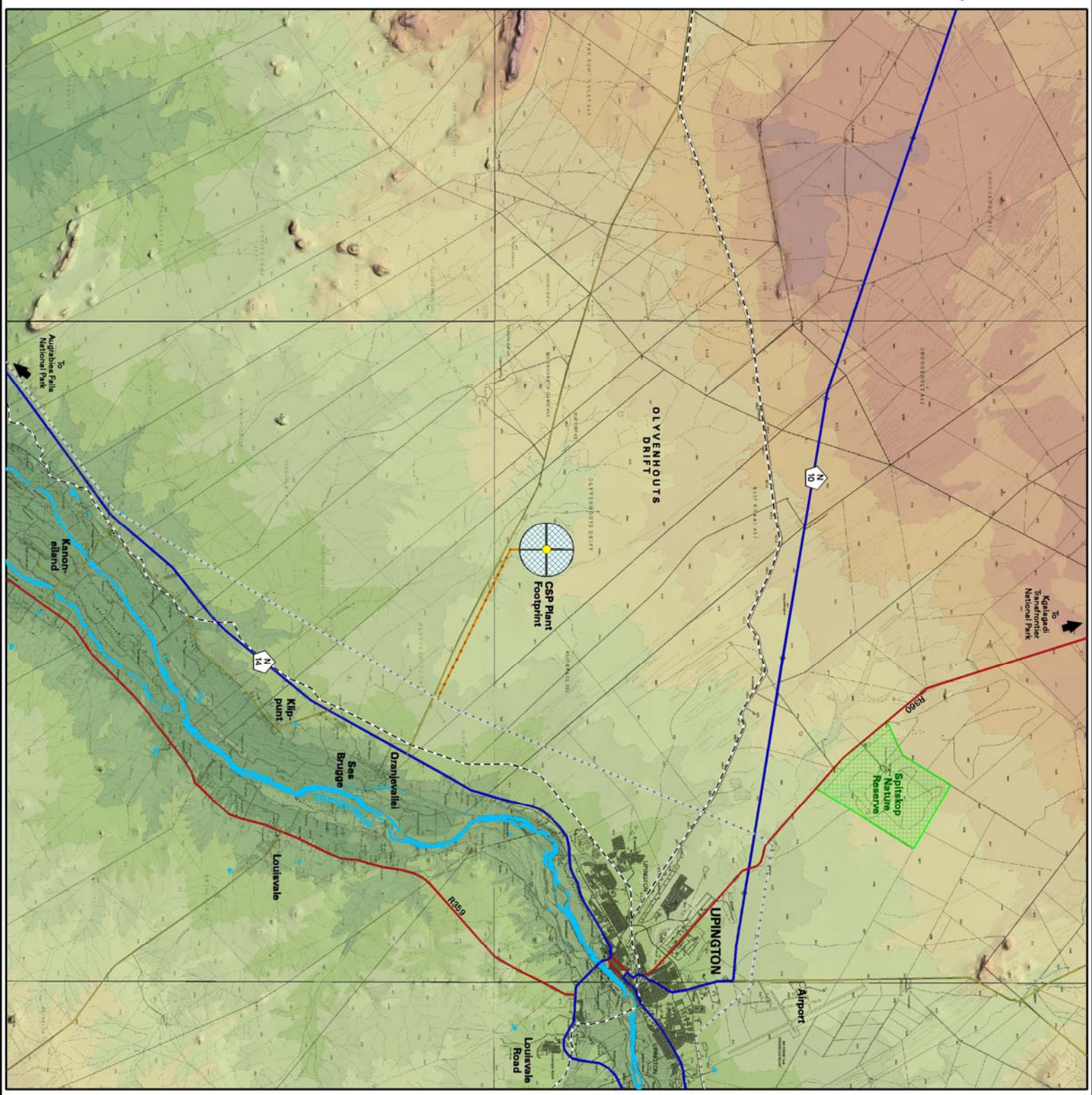
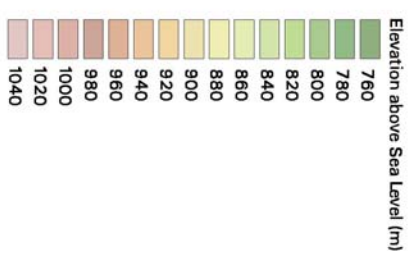
Orientation

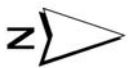



G S P Concentrating Solar Power Plant - Northern Solar Cape



Map 2:
Topography/Shaded Relief

-  National Road
-  Main Road
-  Secondary Road
-  Railway Line
-  Transmission Line
-  Proposed Transmission Line
-  Orange River
-  Nature Reserve







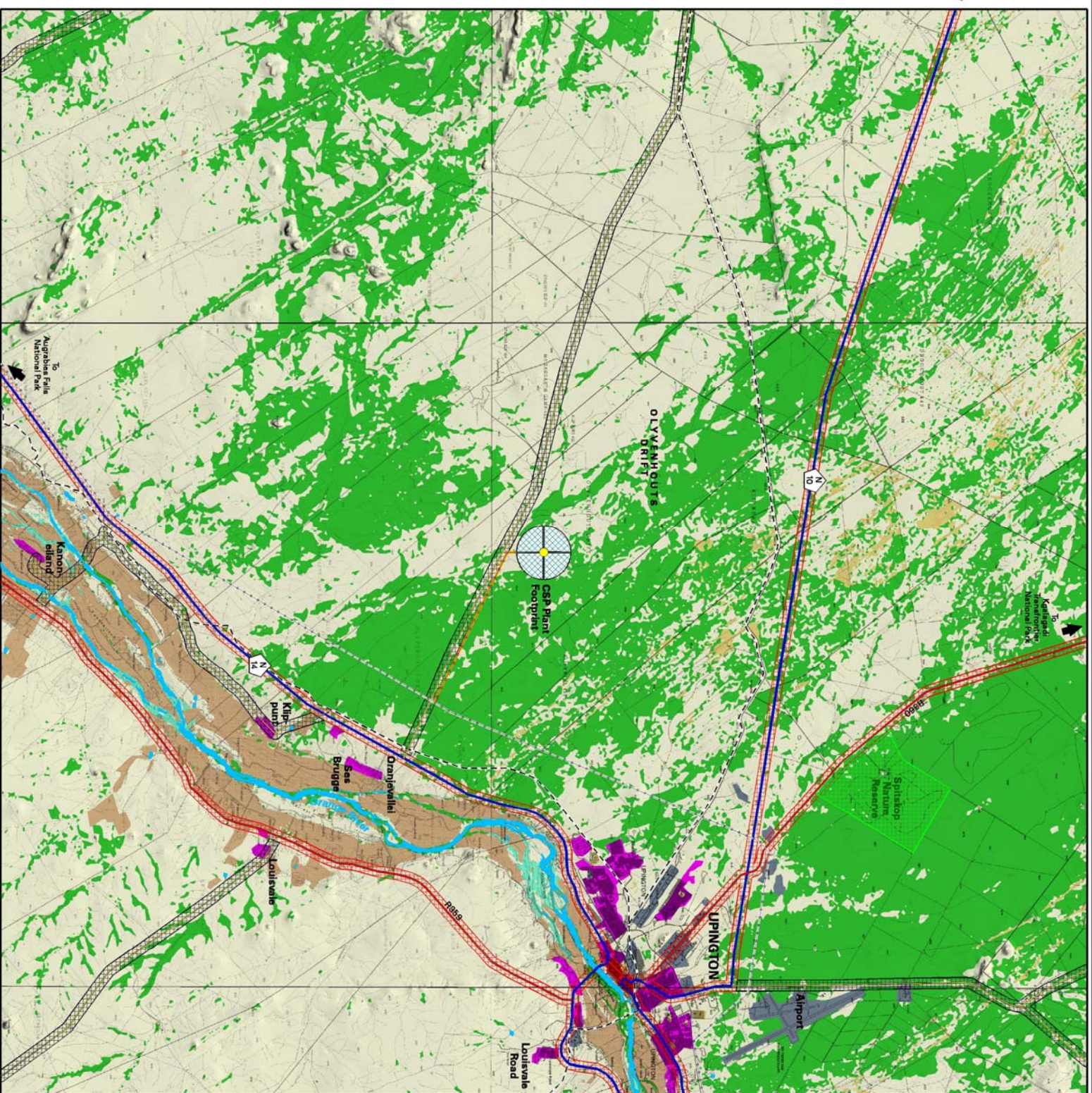
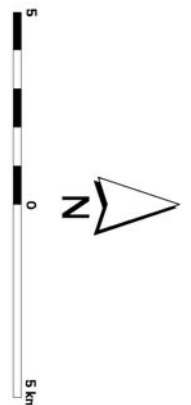
CSP Concentrating Solar Power Plant - Northern Cape

Map 3: Land Use/Land Cover

- National Road
- Main Road
- Secondary Road
- Railway Line
- Transmission Line
- Proposed Transmission Line
- Orange River

- AREA WITH HIGH OBSERVER INCIDENCE AND POTENTIAL NEGATIVE VIEWER PERCEPTION
- AREA WITH MEDIUM OBSERVER INCIDENCE AND POTENTIAL NEGATIVE VIEWER PERCEPTION
- AREA WITH LOW OBSERVER INCIDENCE AND/OR PREDOMINANTLY NEUTRAL VIEWER PERCEPTION
- Agriculture (Vineyards)
- Shrubland
- Grassland
- Commercial/Retail Area
- Industrial/Transportation/Mining Area
- SENSITIVE AREAS WITH POTENTIAL NEGATIVE VIEWER PERCEPTION (CONFLICTING LAND USES)
- Protected Area (Nature oriented tourism)
- Surface Water (Water-based recreation and nature oriented tourism)
- Wetland (Bird watching and nature oriented tourism)
- CORRIDORS WITH HIGH OBSERVER INCIDENCE (HIGH FREQUENCY OF POTENTIAL SIGHTINGS) AND POTENTIAL NEGATIVE VIEWER PERCEPTION
- Major Roads/tourist Routes (Higher observer incidence)
- Other Roads (Lower observer incidence)

Source: CSIR/IARC NLC 2000







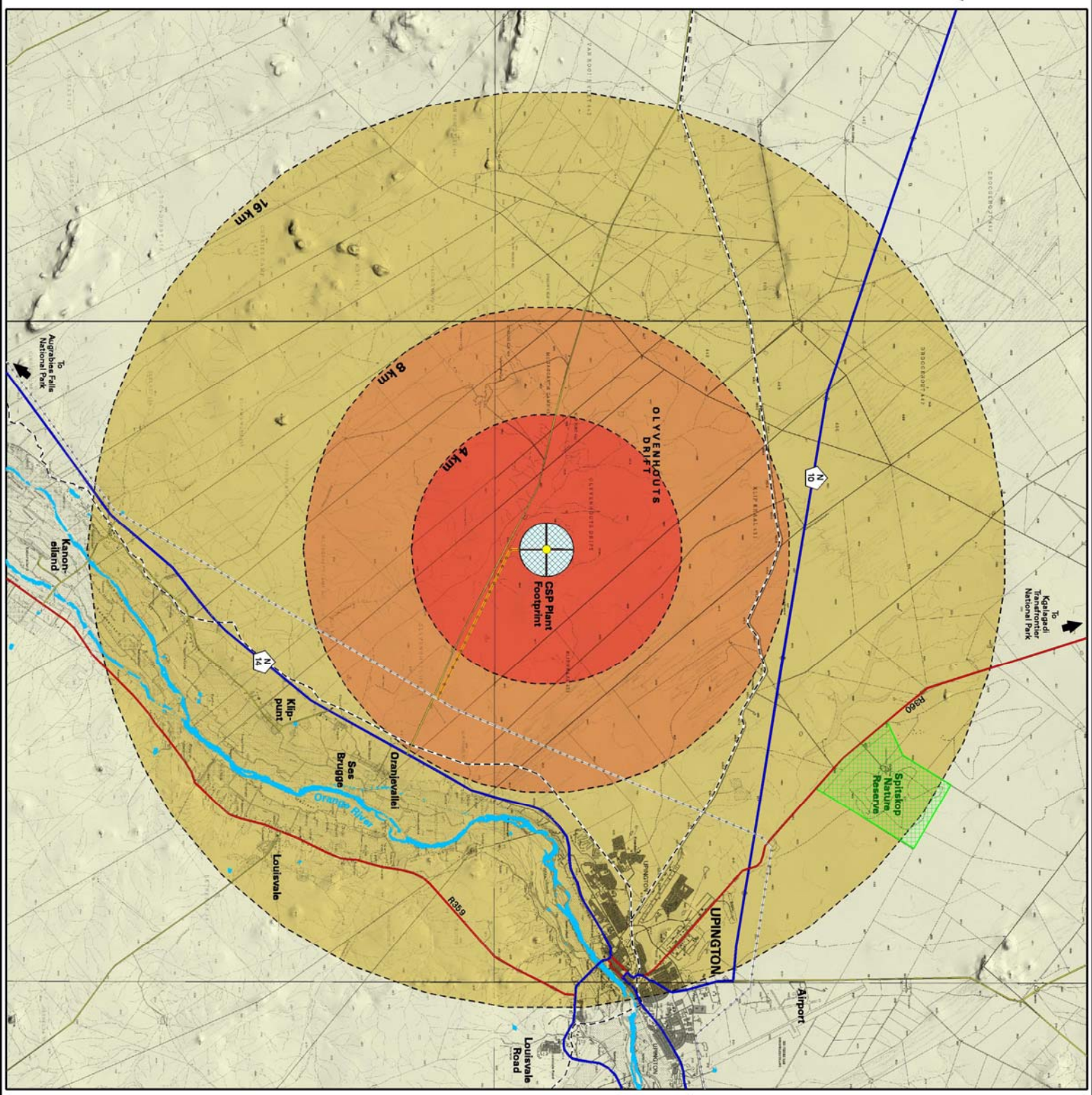
CSP

Concentrating Solar Power Plant - Northern Cape

Map 4: Observer Proximity


-  National Road
-  Main Road
-  Secondary Road
-  Railway Line
-  Transmission Line
-  Proposed Transmission Line
-  Orange River
-  Nature Reserve

- OBSERVER PROXIMITY (VISUAL DISTANCE)**
-  Less than 4 km (Short distance view - very high visual prominence)
 -  4 - 8 km (Medium distance view - high visual prominence)
 -  8 - 16 km (Medium to longer distance view - high to medium visual prominence)
 -  Greater than 16 km (Long distance view - medium visual prominence)



Scale bar: 0 to 5 km

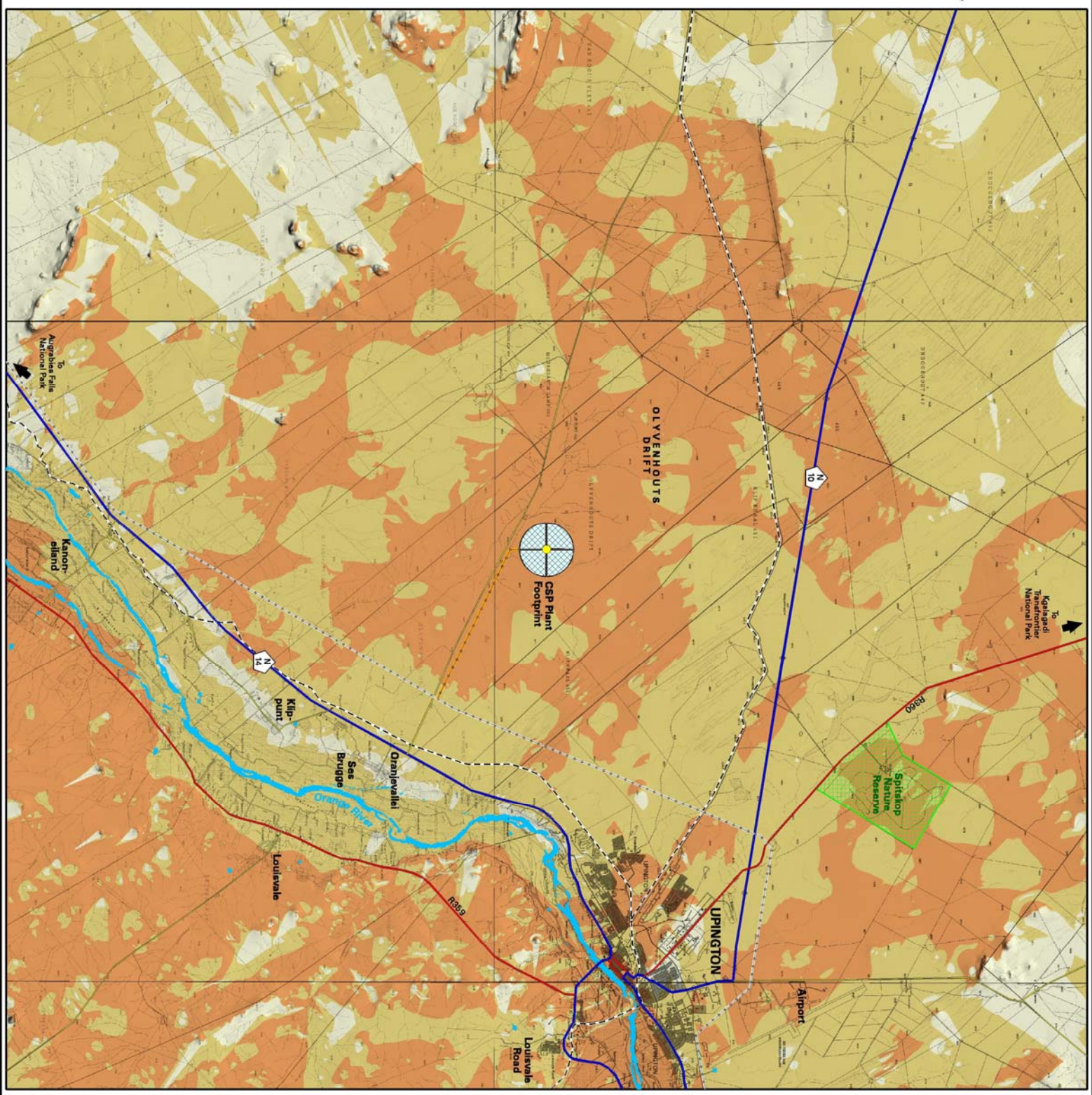
North arrow



CSP

Concentrating Solar Power Plant - Northern Cape

Map 5: Visual Exposure




- National Road
- Main Road
- Secondary Road
- Railway Line
- Transmission Line
- Proposed Transmission Line
- Orange River
- Nature Reserve

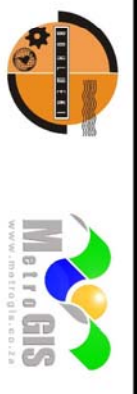
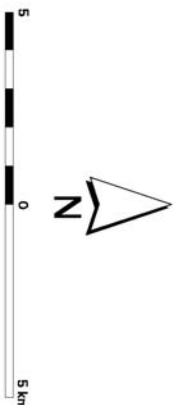
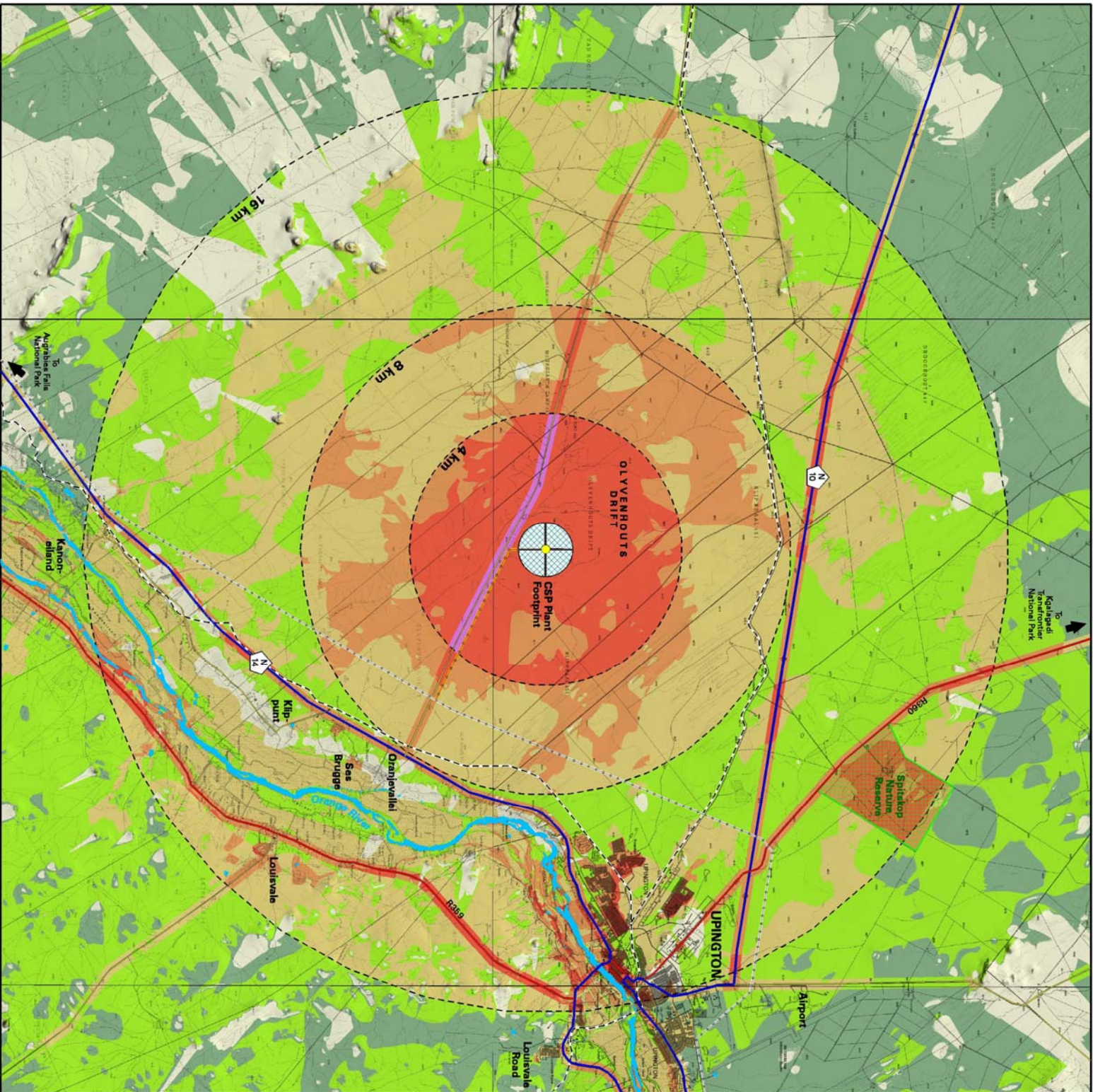
- VISIBLE AREA**
- Central receiver and heliostats (210m above average ground level)
 - Central receiver (12m above average ground level)
 - Not visible

CSIP Concentrating Solar Power Plant - Northern Solar Cape

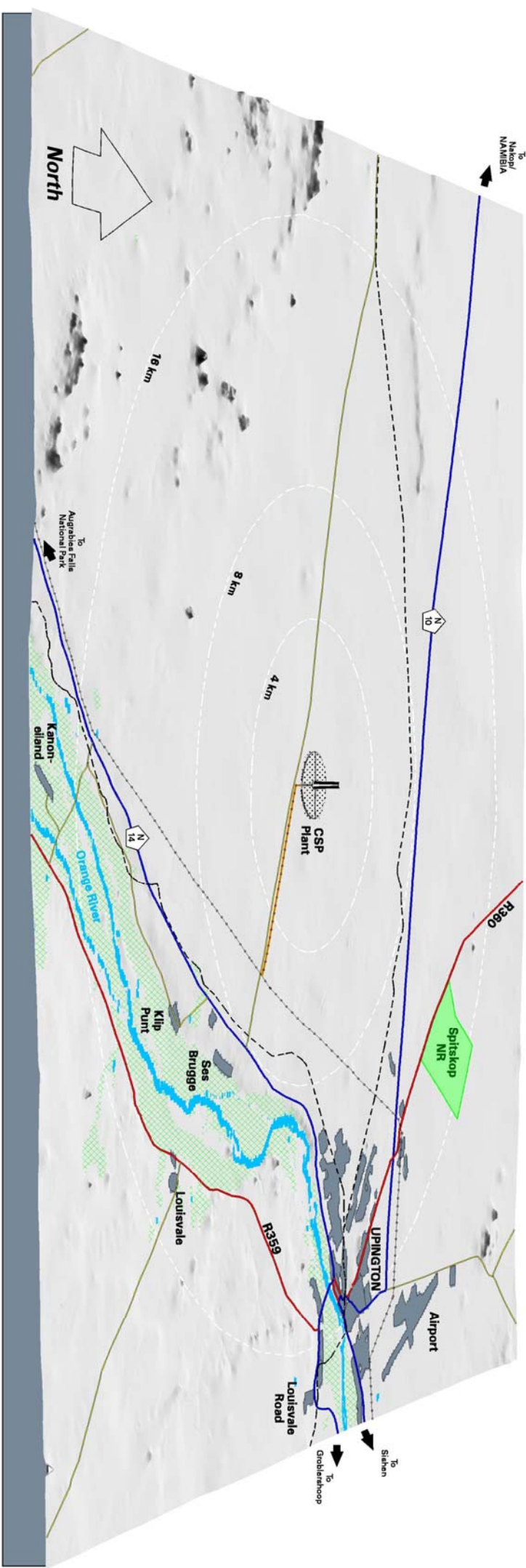
Map 6: Visual Impact Index

-  National Road
-  Main Road
-  Secondary Road
-  Railway Line
-  Transmission Line
-  Proposed Transmission Line
-  Orange River
-  Nature Reserve

- VISUAL IMPACT INDEX**
-  Not Visible
 -  1 - Low
 -  2 - Low to Medium
 -  3 - Medium
 -  4 - Medium to High
 -  5 - High
 -  6 - Very High



CSP Concentrating Solar Power Plant - Northern Solar Cape



Perspective View Parameters

Altitude (above horizon): 180 degrees (South)
 Azimuth (view direction): 20 degrees (centre), 1 degree (top model)
 Surface Z-scale (vertical exaggeration): 3X
 Viewing distance: 113137 m

- Legend**
- National Road
 - Main Road
 - Secondary Road
 - Railway Line
 - Transmission Line
 - Proposed Transmission Line
 - Orange River
 - Nature Reserve

Map 7: Perspective View

